



CONSTRUCTION SUMMARY

9 - 1 - The Barossa 1 (38-1) Elev A
CABINETRY - ACCESSORIES

Inv.150	1 - EXTEND VANITY TO WALL TO ACCOMODATE A DOUBLE SINK, AS PER SKETCH.
Line2478	Note: Price includes sink, standard cabinetry and standard countertop.
7Jul15 / 12Sep15	

CONSTRUCTION

Inv.15	1 - CREATE HALF WALL WITH POSTS ON BOTH SIDES OF WALKWAY BETWEEN GREAT ROOM AND KITCHEN . OPENING TO BE LEFT AT 5 FT AS PER SKETCH
Line163	Note:
19May15 / 2Sep15	
Inv.15	1 - REMOVE DOORWAY TO BATHROOM IN BEDROOM #4 - AS PER SKETCH
Line165	Note:
19May15 / 2Sep15	
Inv.150	1 - REMOVE DOOR TO BATHROOM IN BEDROOM #3
Line2477	Note:
7Jul15 / 12Sep15	
Inv.150	1 - RELOCATE DOOR ON MAIN BATH AS PER SKETCH
Line2479	Note:
7Jul15 / 12Sep15	

ELECTRICAL

Inv.15	1 - CEILING OUTLET - ON NEW SWITCH - EXTRA INTERIOR CEILING OUTLET ROUGH IN NO FIXTURE ON NEW SWITCH-ABOVE ISLAND
Line152	Note:
19May15 / 2Sep15	
Inv.150	1 - PLUG ON SEPARATE CIRCUIT - FOR MICROWAVE - OVER THE RANGE
Line2500	Note:
7Jul15 / 12Sep15	

HARDWOOD FLOORING

Inv.15	1 - HARDWOOD - STANDARD - 2¼ MERCIER SOLID OAK - STANDARD COLOURS - LANDING
Line149	Note:
19May15 / 2Sep15	
Inv.15	1 - HARDWOOD - STANDARD - 2¼ MERCIER SOLID OAK - STANDARD COLOURS - UPPER HALL
Line150	Note:
19May15 / 2Sep15	

HEATING & VENTILATION

Inv.15	1 - GAS LINE - ROUGH IN GAS LINE - FOR STOVE
Line153	Note:
19May15 / 2Sep15	

STAIRS AND RAILINGS / NOSINGS

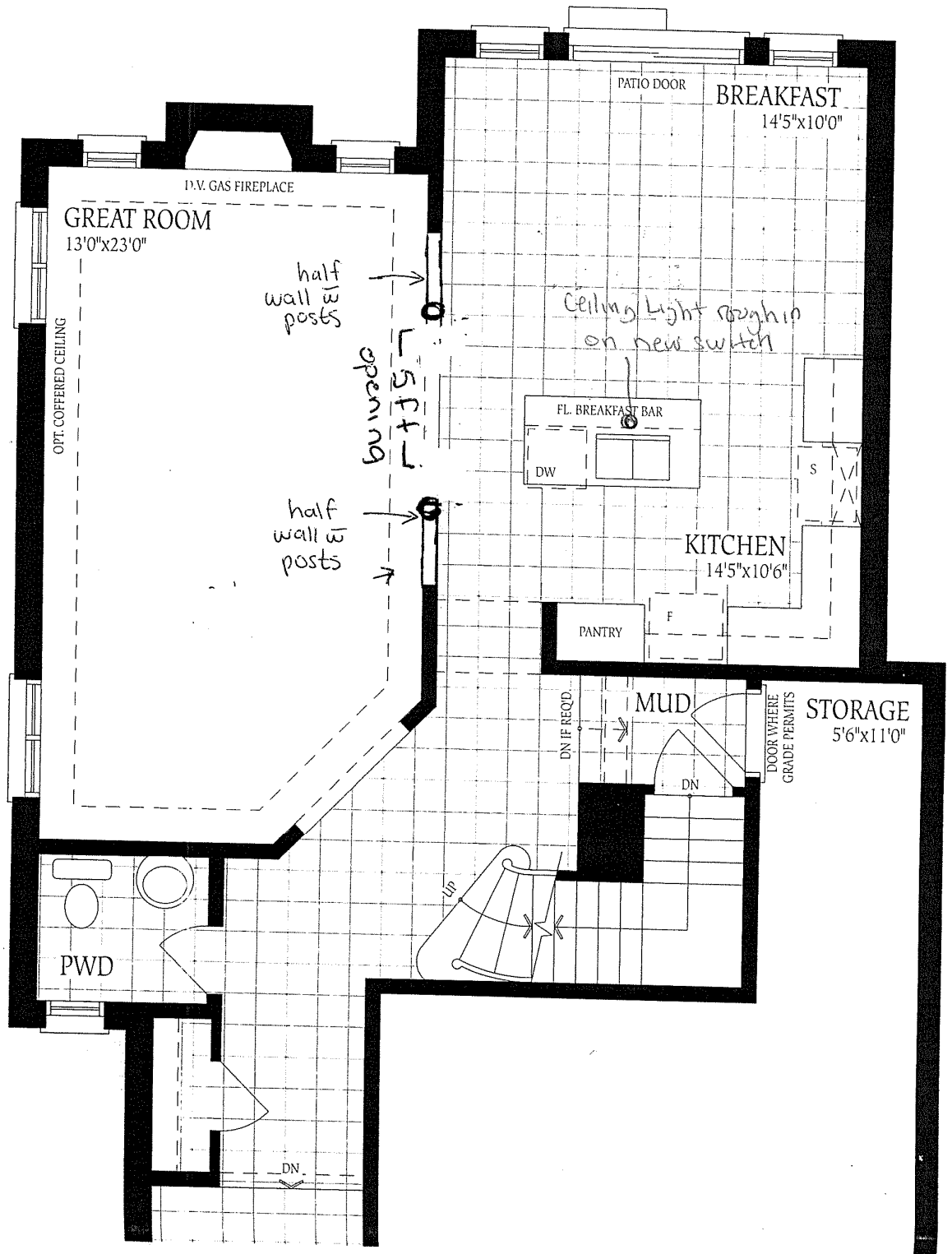
Inv.15	1 - UPGRADE RAILING - UPGRADE 2 - LEVEL 2 - WROUGHT IRON- GREY
Line1394	Note:
19May15 / 2Sep15	



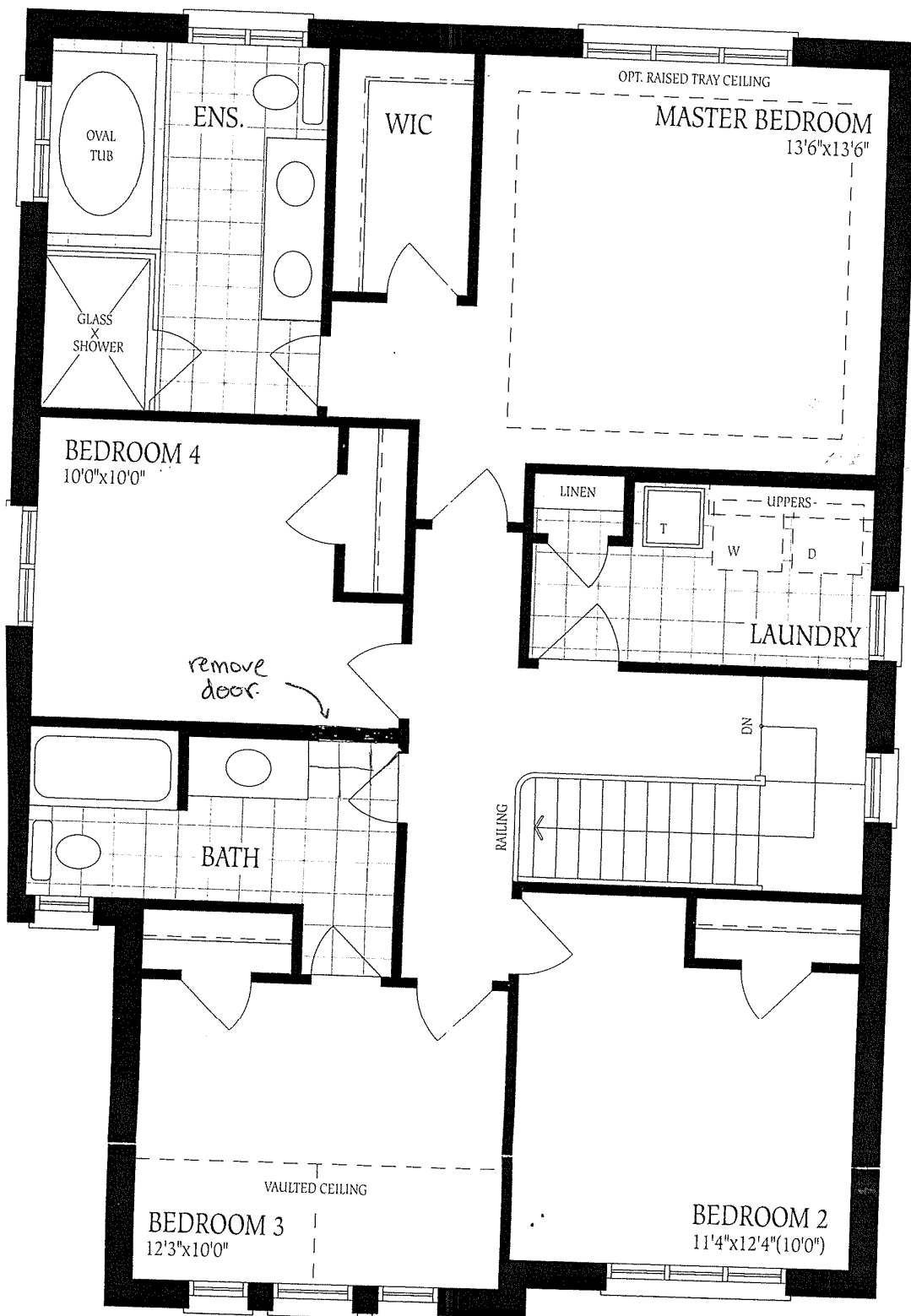
CONSTRUCTION SUMMARY

9 - 1 - The Barossa 1 (38-1) Elev A

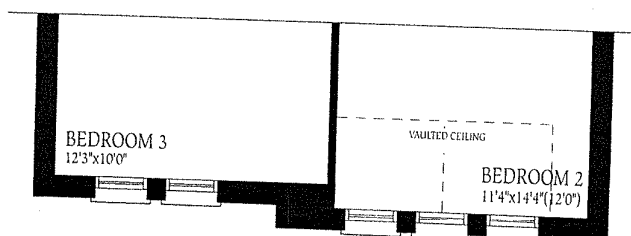
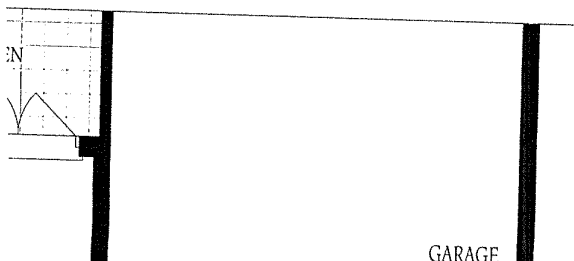
Lot #9



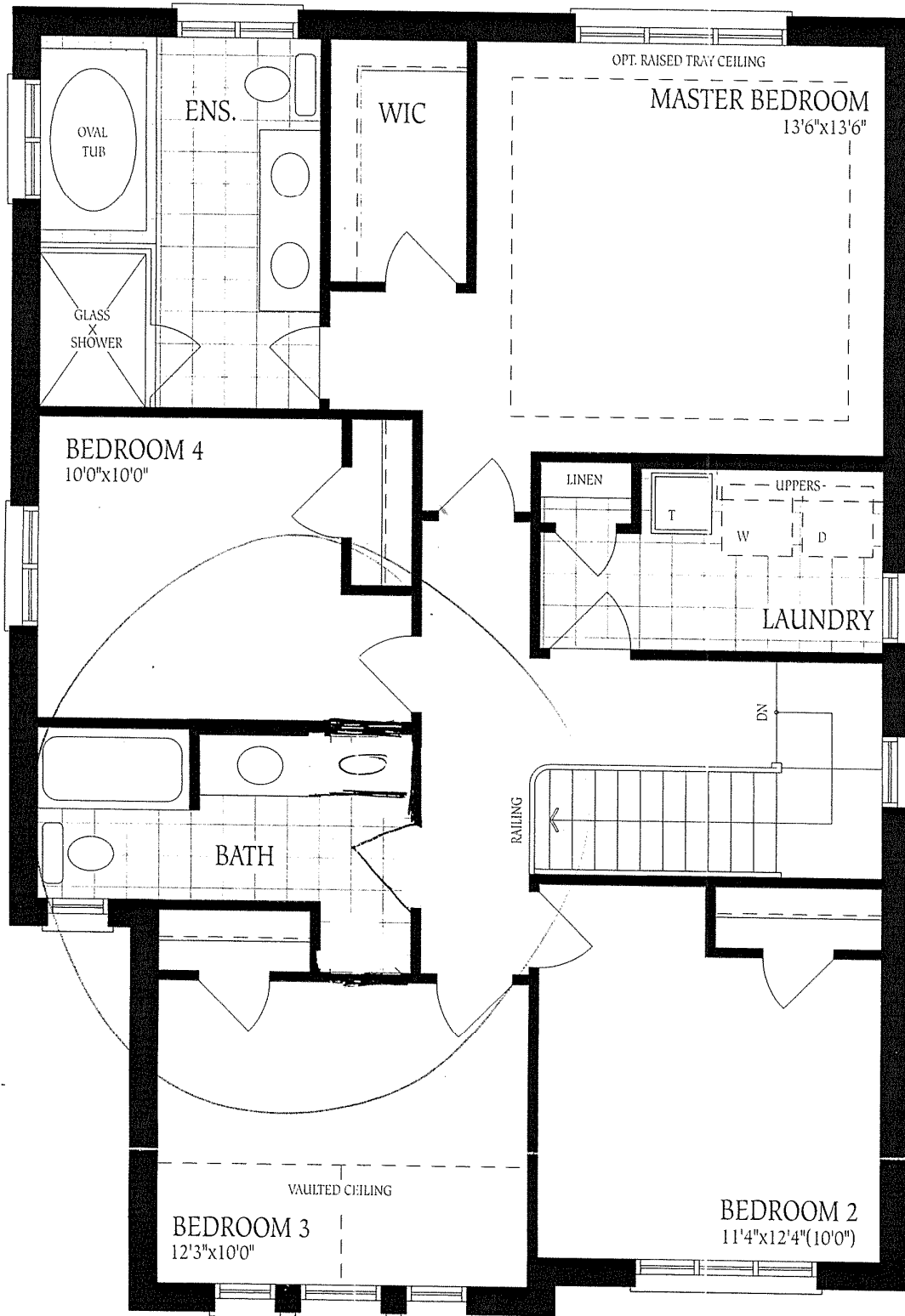
Lot #9
Barossa. I ElevA.



Second Floor
Elevation A



Lot # 9.



Second Floor
Elevation A

SP
SN

