



CONSTRUCTION SUMMARY

35 - 1 - The Barossa 5 (38-5) Elev A
CEILINGS

Inv.26	1 - SMOOTH CEILINGS - MAIN FLOOR
Line284	Note:
23May15 / 3Sep15	
Inv.26	1 - OPTIONAL TRAY CEILING IN MASTER BEDROOM
Line1139	Note:
23May15 / 3Sep15	
Inv.26	1 - SMOOTH CEILINGS - 2ND FLOOR
Line283	Note:
23May15 / 3Sep15	

ELECTRICAL

Inv.26	1 - UPGRADE TO 200 AMP SERVICE -
Line298	Note:
23May15 / 3Sep15	

FIREPLACE AND ACCESSORIES

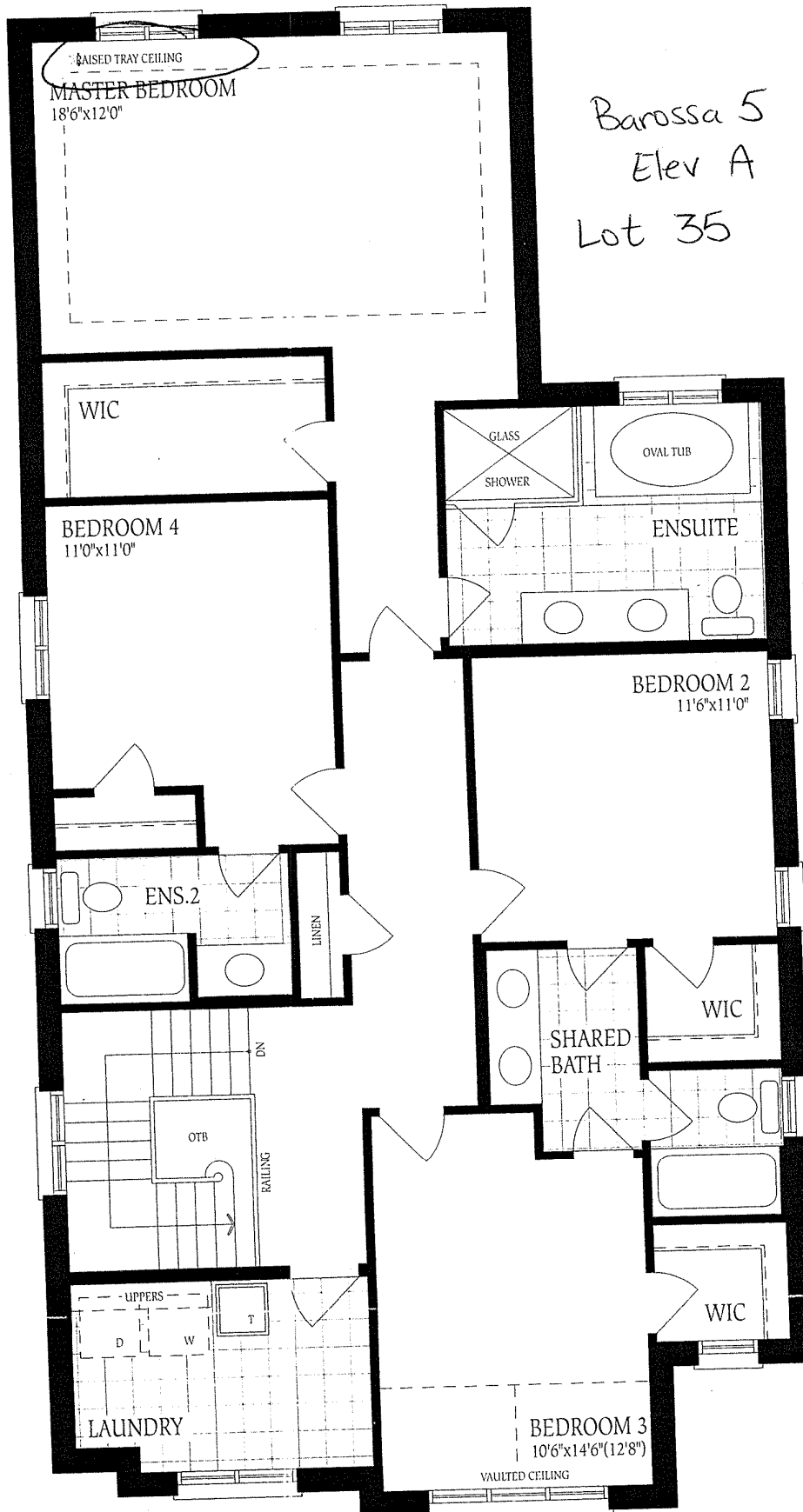
Inv.26	1 - FIREPLACE ACCESSORY - FAN KIT - NOTE: ELECTRONIC IGNITION REQUIRES A 110V SOURCE TO BE RAN BY BUILDER AN EXTRA COST PRICE INCLUDES 110V SOURCE
Line286	Note:
23May15 / 3Sep15	

STAIRS AND RAILINGS / NOSINGS

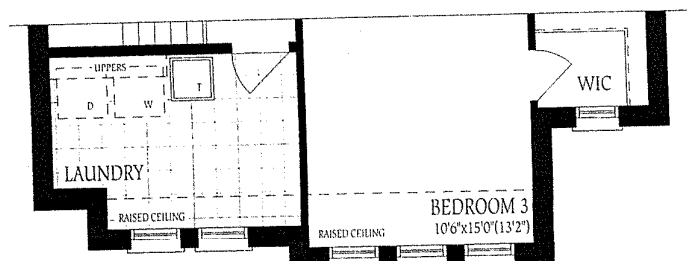
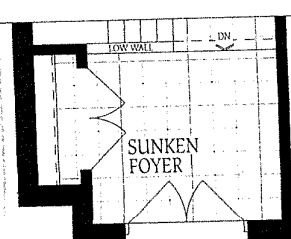
Inv.26	1 - UPGRADE RAILING-UPGRADE #2 WROUGHT IRON LEVEL #2- BLACK
Line295	Note:
23May15 / 3Sep15	
Inv.26	1 - UPGRADING BASEMENT STAIRS TO OAK (NATURAL FINISH) -
Line296	Note:
23May15 / 3Sep15	

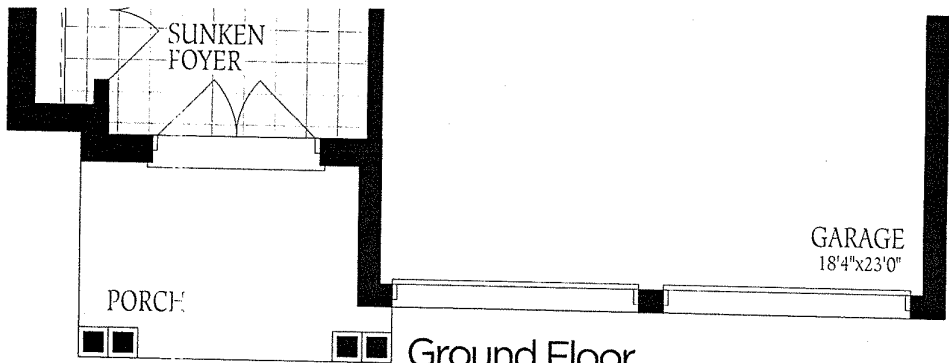
WINDOWS - BASEMENT

Inv.26	3 - BASEMENT WINDOW - 30 X 30 ALL THREE WINDOWS - AS PER SKETCH
Line297	Note:
23May15 / 3Sep15	

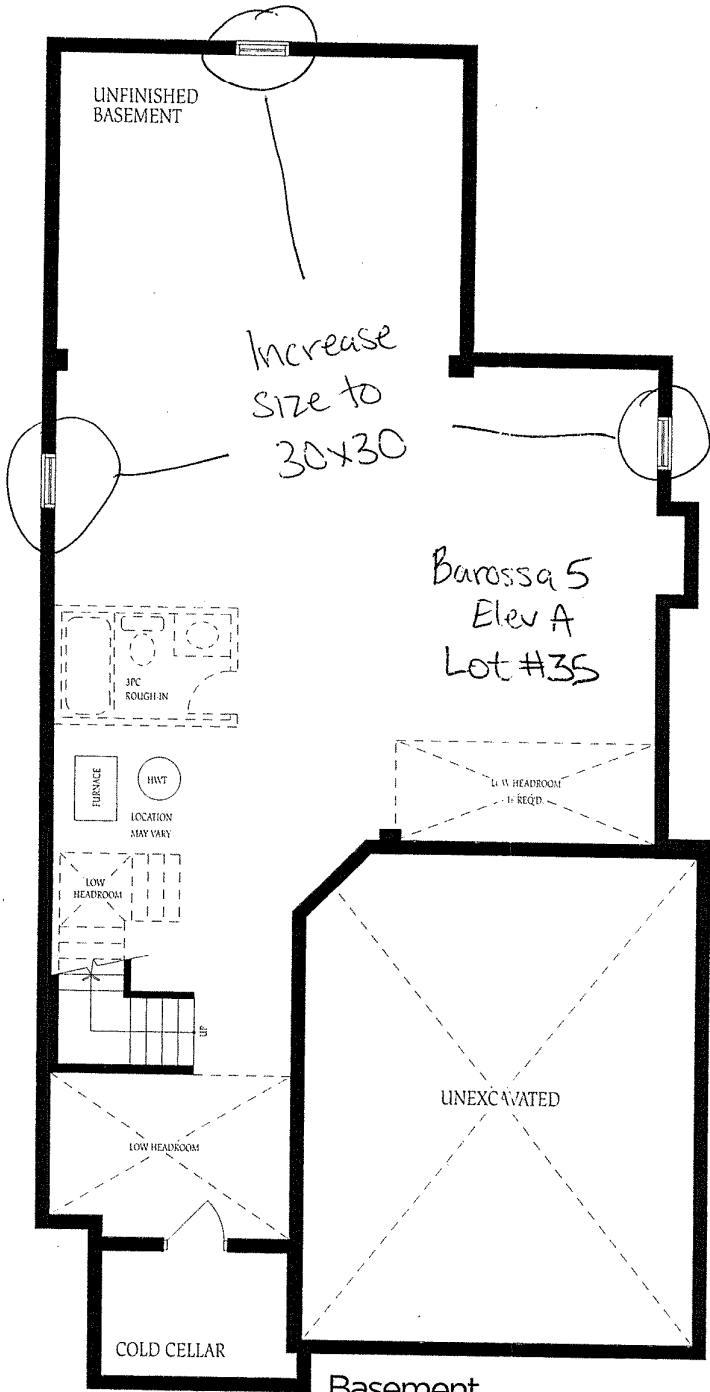


Second Floor
Elevation A

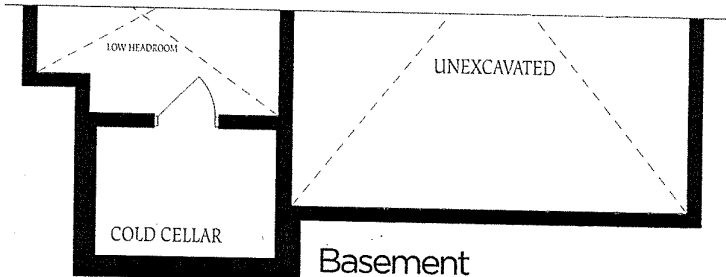




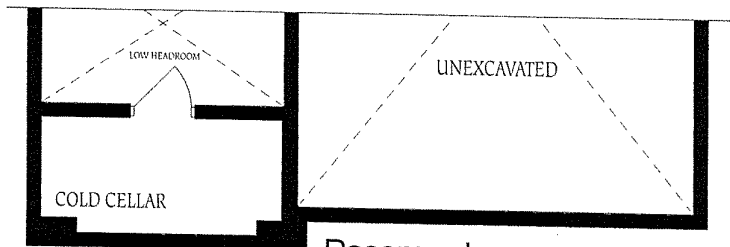
Ground Floor
Elevation A



Basement
Elevation A



Basement
Elevation B



Basement
Elevation C

The floor
construction
of floor :
floor spa