

PRODUCT MODEL NUMBERS

KDFE104D	KDTE104D	KDTE404D
KDFE304D	KDTE204D	KDTE504D
KDHE404D	KDTE304D	KDTE704D
KDHE704D	KDTE334D	KDTM354D

Electrical Requirements: 120-volt, 60 Hz, AC-only, 15- or 20 amp fused electrical supply. Copper wire only. A time-delay fuse or circuit breaker and separate circuit is recommended.

Water Supply Requirements: A hot water line with 20 to 120 psi (138 to 862 kPa) water pressure. Water temperature must be 120°F (49°C) water at dishwasher. Use 3/8" O.D. copper tubing with compression fitting or flexible braided supply line (1/2" minimum plastic tubing is not recommended). Use a 90° elbow with 3/4" N.P.T. external pipe threads on one end. Do not solder within 6" (15.2 cm) from water inlet valve.

Drain Requirements: A new drain hose is supplied with your dishwasher. If this is not long enough, use a new drain hose with a maximum length of 12 ft (3.7 m) (Part Number 3385556) that meets all current AHAM/IAPMO test standards, is resistant to heat and detergent, and fits the 1" (2.5 cm) drain connector of the dishwasher.

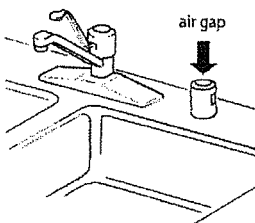
Make sure to connect the drain hose to waste tee or disposer inlet above drain trap in house plumbing and 20" (50.8 cm) minimum above the floor. It is recommended

that the drain hose either be looped up and securely fastened to the underside of the counter, or be connected to an air gap.

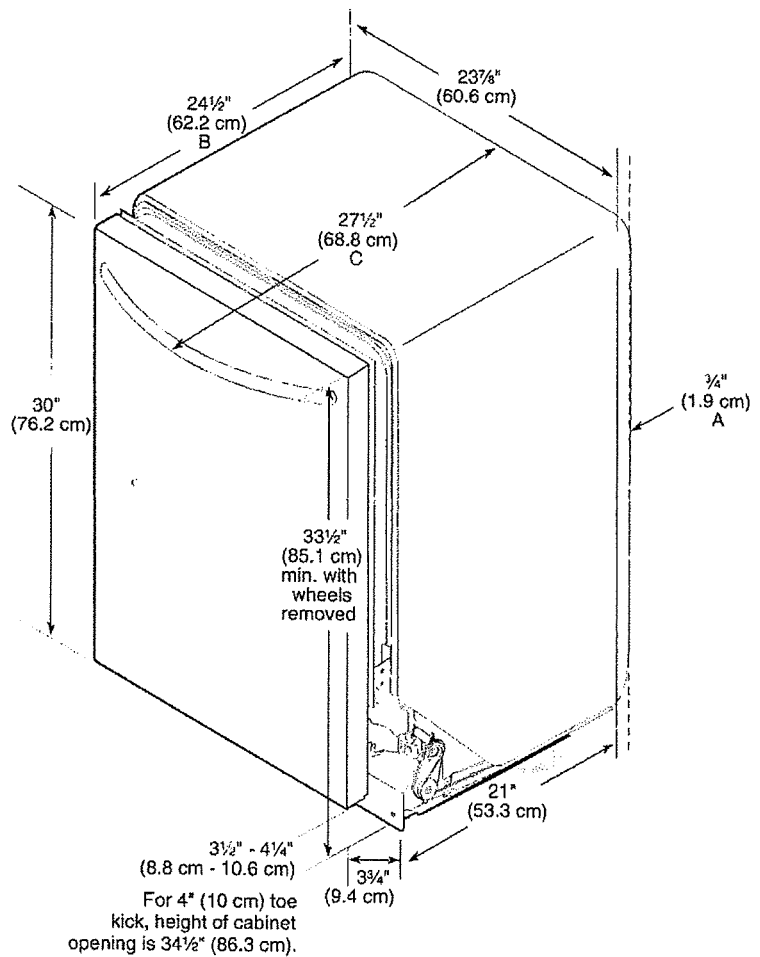
Make sure to use an air gap if the drain hose is connected to house plumbing lower than 20" (50.8 cm) above subfloor or floor.

Use 1/2" (1.3 cm) minimum I.D. drain line fittings.

If required, the air gap should be installed in accordance with the air gap installation instructions. When you connect the air gap, a rubber hose (not provided) will be needed to connect to the waste tee or disposer inlet.



PRODUCT DIMENSIONS



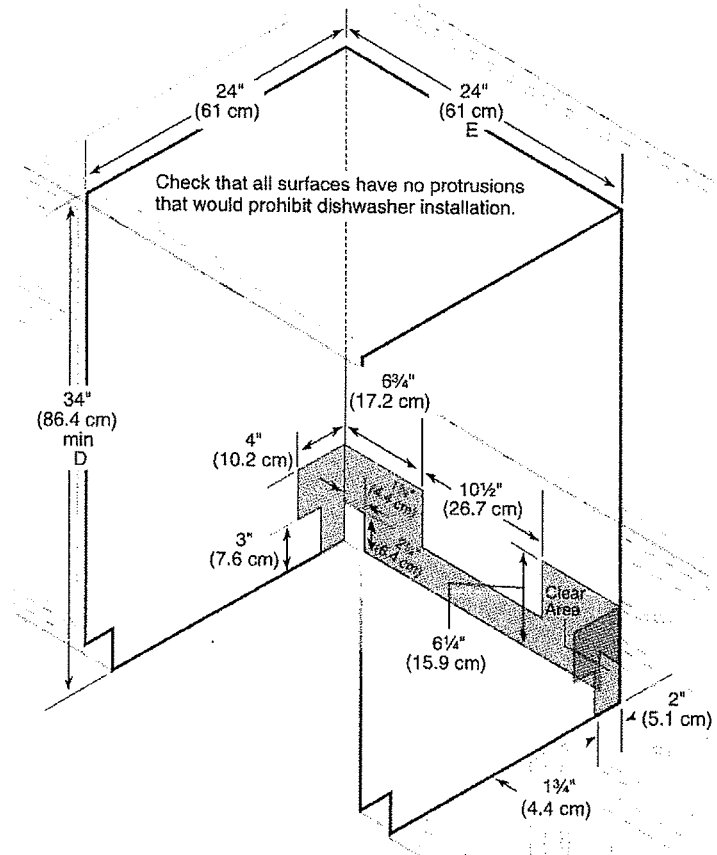
- A. Insulation may be compressed (not used on all models).
- B. For panel ready models, dishwasher depth is 24" (60 cm) not including the 3/4" (1.9 cm) custom door panel.
- C. For Pro Line® handle, depth is 28" (70 cm).

58R

CABINET CUTOUT DIMENSIONS

NOTE: Shaded areas of cabinet walls show where utility connections may be installed.

- D. Measured from the lowest point on the underside of the countertop. May be reduced to 33 1/2" (85.1 cm) by removing the wheels and perforated area of insulation (blanket) on dishwasher.
- E. Minimum, measured from narrowest point of opening.



582

Electric Cooktop



Stainless Steel
KECC667BSS

The elements on the image above are digitally enhanced to show size and placement.

Even-Heat™ Technology

Even-Heat™ Elements deliver a consistent level of heat across the entire element to deliver fast boil times and perfectly even simmers and melts.

Triple-Ring and Double-Ring Elements

Give you the versatility of multiple elements in one location to more closely match cooking surface to cookware size. The inner rings are used like standard six-inch elements. The outer rings add the size and power needed for larger cookware and large quantities of food.

Touch-Activated Electronic Controls

The cooktop is turned on, and a heat level is selected by pressing gently on the electronic controls.

Preliminary

Architect® Series II

KECC667B – 36-Inch

Performance

- 5 Radiant Elements
- 12"9"6" (3000W/1950W/1050W) Triple-Ring Round Element
- Two 10"6" (2500W/1250W) Double-Ring Round Elements
- Two 6" 1200W Elements
- Even-Heat™ Simmer on All Elements
- Even-Heat™ Melt on All Elements
- Touch-Activated Electronic Controls
- Power-On Indicator Light
- Hot-Surface Indicators
- Control Lock Function

Craftsmanship & Design

- Premium Ceramic-Glass Surface

Colors

- Premium Black with Watermark (BL)
- Premium Black with Watermark and Stainless-Look Trim (SS)



FOR THE WAY IT'S MADE.®

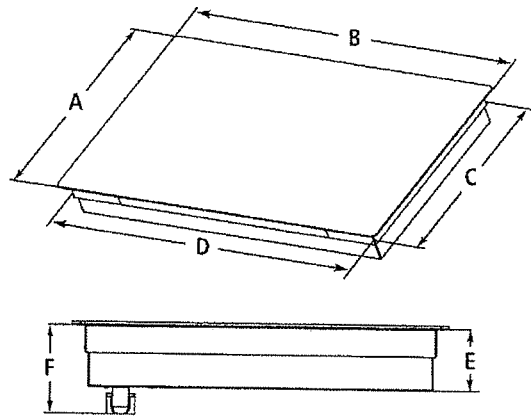
58R

Electric Cooktop

KECC667B

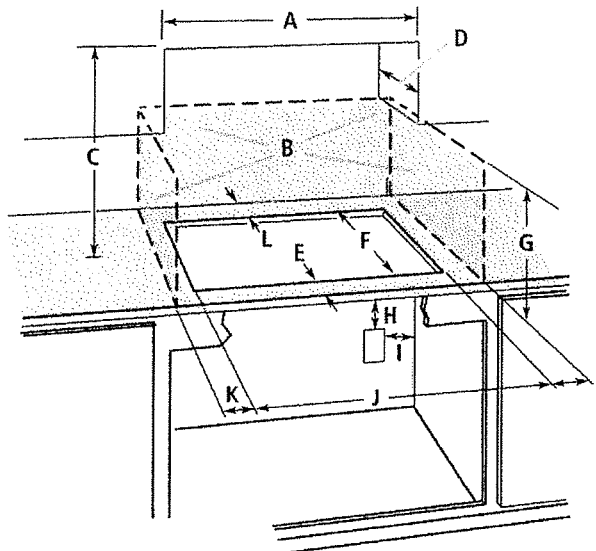
Preliminary

PRODUCT DIMENSIONS



- A. Depth of glass
KECC667BBL: 21³/₄"
KECC667BSS: 22¹/₈"
- B. Width of glass: 36⁵/₁₆"
- C. Depth of frame: 20¹/₄"
- D. Width of frame: 34⁷/₁₆"
- E. Height of recessed cooktop: 3³/₄"
- F. Height of recessed cooktop including conduit
(located at rear of cooktop, right side): 5¹/₄"

CUTOUT DIMENSIONS



- A. 36"
- B. Combustible area above countertop (shown by dashed box)
- C. 30" minimum clearance between top of cooktop platform and bottom of uncovered wood or metal cabinet (24" minimum clearance if bottom of wood or metal cabinet is covered by not less than 1/4" flame retardant millboard covered with not less than No. 28 MSG sheet steel, 0.015" stainless steel, 0.024" aluminum, or 0.020" copper)
- D. 13" recommended upper cabinet depth
- E. 2"
- F. 20¹/₂" recommended cutout depth (20³/₈" min. – 20⁹/₁₆" max.)
- G. 18" minimum clearance from upper cabinet to countertop within minimum horizontal clearances to cooktop
- H. Junction box or outlet: 7" minimum from top of countertop
- I. Junction box or outlet: 9" maximum from right side of cabinet
- J. 35¹/₂" recommended cutout width (34³/₁₆" min. – 35⁹/₁₆" max.)
- K. 1" minimum distance to nearest left- and right-side combustible surface above cooktop
- L. 1" minimum clearance between back wall and countertop

Dimensions are for planning purposes only. For complete details, see Installation Instructions packed with product. Specifications subject to change without notice.

For additional information about KitchenAid® appliances, visit KitchenAid.com or call the Customer Experience Center at 800-422-1230. We'll help you select the ideal model and answer questions about appliance operation and performance.

KitchenAid®
FOR THE WAY IT'S MADE™

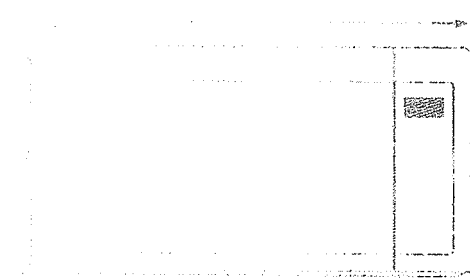
®Registered trademark,™Trademark/the shape of the stand mixer is a registered trademark of KitchenAid, U.S.A.
© 2012. All rights reserved.

KitchenAid® Microwave Oven

KCMS1655B

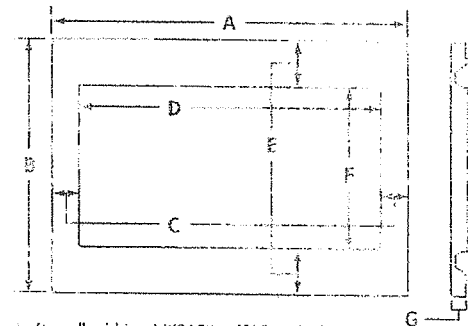
58R

FRONT VIEW DIMENSIONS



Net weight: 40.0 lb
Gross weight: 44.0 lb

TRIM KIT DIMENSIONS



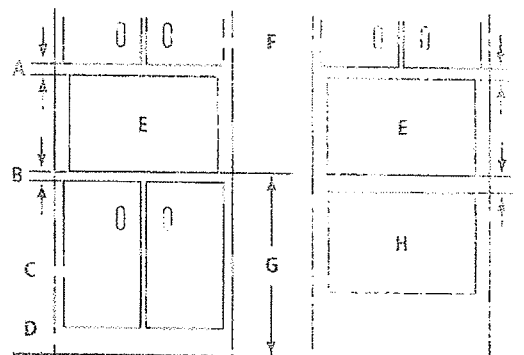
- A. Overall width – MK2160: 29 3/4" MK2167: 26 3/4"
- B. 19 1/8" overall height
- C. Side trim width – MK2160: 3 1/2" MK2167: 2 1/4"
- D. 22 1/2" opening width
- E. 3 3/8" top/bottom trim height
- F. 12 1/4" opening height
- G. 1 1/8" trim depth

REAR VIEW DIMENSIONS



- A. 24 1/2" overall depth
- B. 19 1/8" overall height
- C. 24 1/2" overall width
- D. 36" height from floor to microwave oven
- E. 36" height from floor to microwave oven

LOCATION REQUIREMENTS



- A. 2" min. between upper cabinet and top of microwave oven cabinet
- B. 1 1/2" min. between top of lower cabinet and microwave oven cabinet
- C. Lower cabinets
- D. Floor
- E. Microwave oven cabinet
- F. Upper cabinets
- G. 36" min. from the floor to the microwave oven cabinet
- H. Lower built-in oven cabinet
- I. 2" min. between upper cabinet and top of microwave oven cabinet
- J. 3" min. between top of built-in oven cabinet and microwave oven cabinet

Dimensions are for planning purposes only. For complete details, see installation instructions packed with product. Specifications subject to change without notice.

For additional information about KitchenAid® appliances, visit KitchenAid.com or call the Customer Experience Center at 800-422-1230. We'll help you select the right model and answer questions about appliance operation and performance.

KitchenAid®
FOR THE WAY IT'S MADE®

©2012 KitchenAid. All rights reserved. The design of the stand mixer is a trademark in the U.S. and elsewhere.
KitchenAid • Benton Harbor, Michigan 49022 U.S.A.

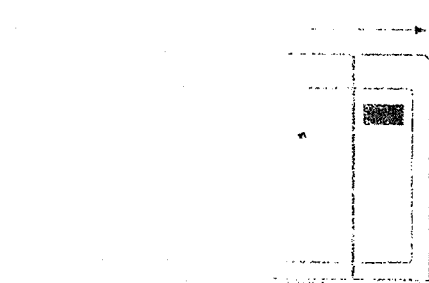
00004960702 12

KitchenAid® Microwave Over

KCMSI675B

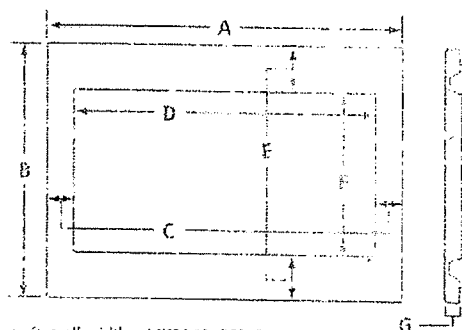
58R

FRONT VIEW



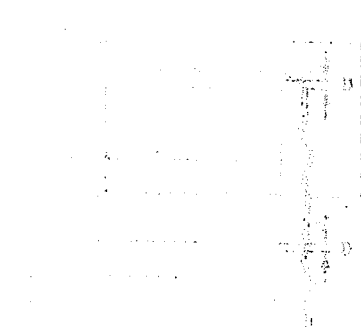
FRONT

TRIM KIT DIMENSIONS



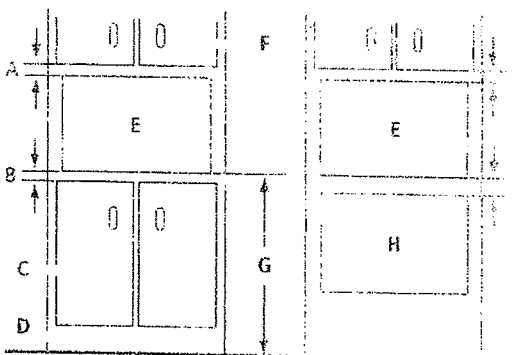
- A. Overall width – MK2160: 29 3/4", MK2167: 29 7/8"
- B. 19 1/2" overall height
- C. Side trim width – MK2160: 3 1/4", MK2167: 2 1/4"
- D. 22 3/4" opening width
- E. 3 1/2" top/bottom trim height
- F. 12 1/4" opening height
- G. 1 1/2" trim depth

FRONT VIEW (BUILT-IN)



- A. 2" min. between upper cabinet and top of microwave oven cutout
- B. 1 1/2" min. between top of lower cabinet and microwave oven cutout
- C. Lower cabinets
- D. Floor
- E. Microwave oven cutout
- F. Upper cabinets
- G. 35" min. from the floor to the microwave oven cutout
- H. Lower built-in oven cutout
- I. 2" min. between upper cabinet and top of microwave oven cutout
- J. 3" min. between top of built-in oven cutout and microwave oven cutout

LOCATION REQUIREMENTS



- A. 2" min. between upper cabinet and top of microwave oven cutout
- B. 1 1/2" min. between top of lower cabinet and microwave oven cutout
- C. Lower cabinets
- D. Floor
- E. Microwave oven cutout
- F. Upper cabinets
- G. 35" min. from the floor to the microwave oven cutout
- H. Lower built-in oven cutout
- I. 2" min. between upper cabinet and top of microwave oven cutout
- J. 3" min. between top of built-in oven cutout and microwave oven cutout

Dimensions are for planning purposes only. For complete details, see installation instructions packed with product. Specifications subject to change without notice.

For more information about KitchenAid® appliances, visit KitchenAid.com or call our Customer Experience Center at 800-422-1230. We'll help you select the right model and answer questions about appliance operation and performance.

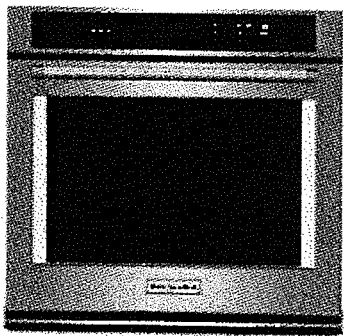
KitchenAid
FOR THE WAY IT'S MADE.

© 2012 KitchenAid. All rights reserved. The design of the stand mixer is a trademark of the KitchenAid company.
KitchenAid • Benton Harbor, Michigan 49022 U.S.A.

REF: 216R 10512

58R

KitchenAid



NEW

KitchenAid® 30" Single Wall Oven with Even-Heat™ Thermal Bake/Broil

4.3

9 Reviews Write a Review

This 30" Single Wall Oven with Even-Heat™ Thermal Bake/Broil cycles the bake and broil elements to maintain the perfect temperature for baking, broiling and roasting. It comes with the FIT System Guarantee allowing you to matching the height of existing cabinets. And its bold design details are the perfect balance of elegance and functionality.

AVAILABLE COLOR OPTIONS

Stainless Steel - KOST100ESS

SPECIFICATIONS

Configuration and Overview

Fuel Type	Electric
Hz	60 Hz
Volts	240
Oven Type	Single
Size	30
Oven Cooking System	Thermal
Oven Capacity	5.0
Star K Compliant	Sabbath Mode
CUL	Yes
UL	Yes
Amps	20

Dimensions

Depth	26 7/8
Height	28 3/4
Width	30
Cutout Depth	24
Cutout Height	28
Cutout Width	28 1/2

Product Dimensions

Dimensions are for planning purposes only. For complete information, visit owner center.

Interior Depth (in.)	19
Interior Height (in.)	18
Interior Width (in.)	25

58R

Controls

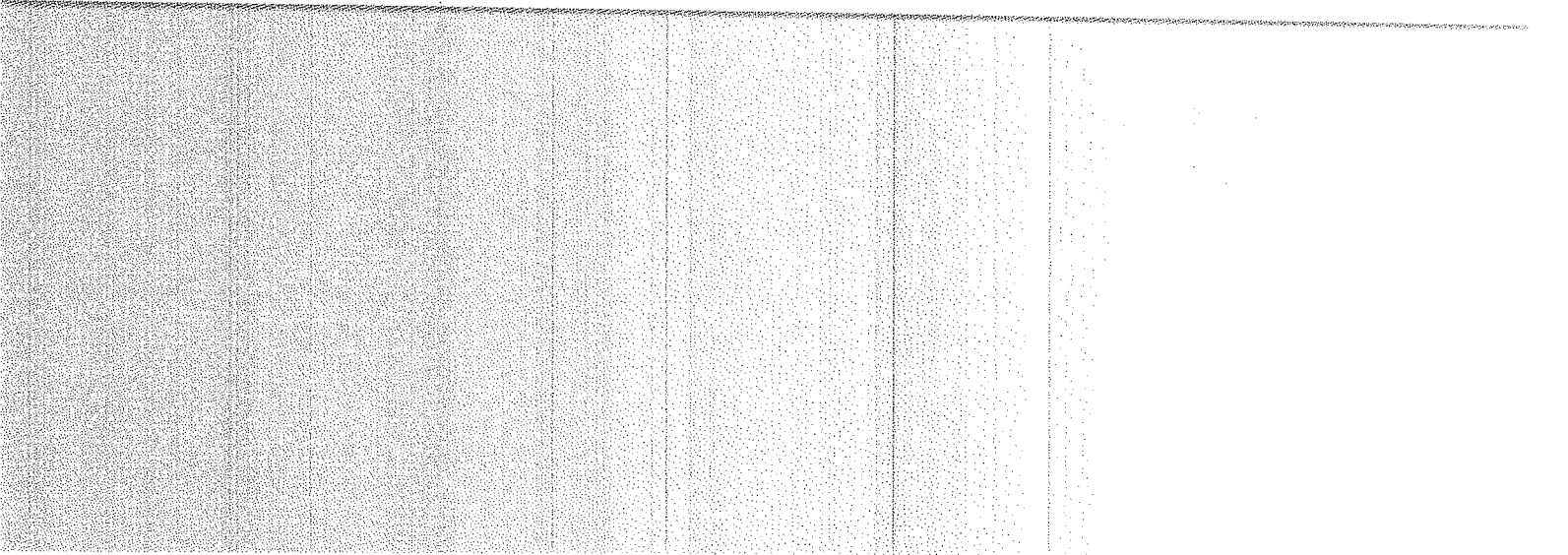
Door Type	Metal & Glass
Flush Installation Approved	Yes
Handle Color	Stainless Steel
Handle Material	Metal
Oven Window Size	Extra Large
ADA Compliant	ADA Height and Side and Front Reach Compliant
Door Removable	Yes

Oven Controls

Display Type	Digital
Display Color	White
Features	Clock, Control Lock, Delay Start, Proofing, Sabbath Mode, Star K, Time Bake, Timer
Automatic Shut-Off	Yes
Language Conversion	English/French
LP Convertible	No
Temperature Conversion	Yes

Oven Features

Bake Element Power	2800W/2427W
Broiler Element Power	4000W/3467W
Number of Bake Elements	1
Number of Broil Elements	1
Oven Cooking System	Thermal
Light Type	Halogen
Oven Capacity (cu. ft.)	5.0
Self-Cleaning Oven Racks	No



58K



Bottom Mount Refrigerator

PRODUCT MODEL NUMBERS

MFC2062DE MFF2558DE
MFF2258DE

Electrical: A 115-volt, 60-Hz, AC-only, 15- or 20-amp fused, grounded electrical supply is required. It is recommended that a separate circuit serving only your refrigerator be provided. Use an outlet that cannot be turned off by a switch. Do not use an extension cord.

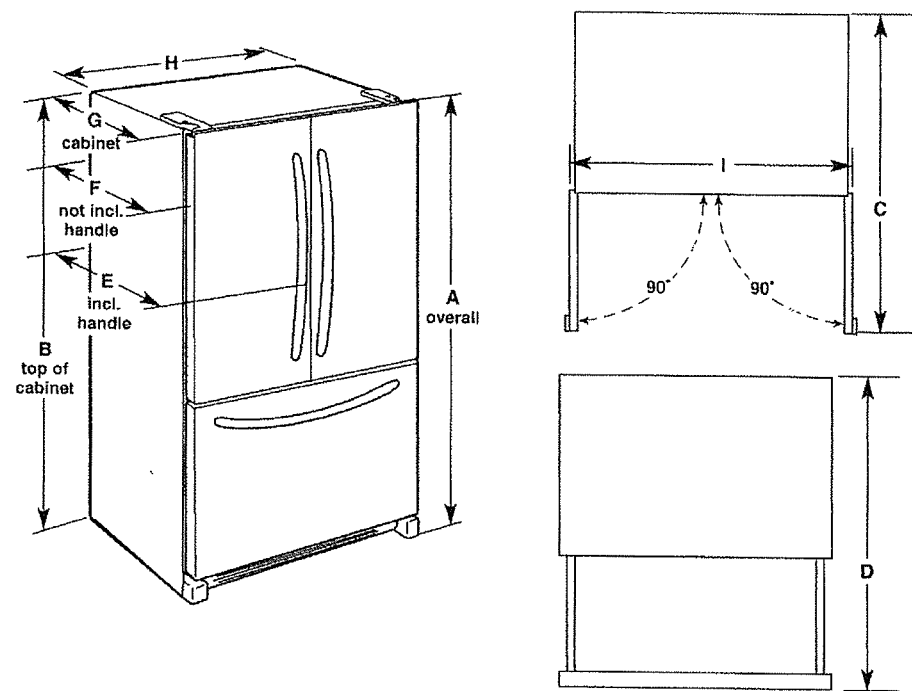
NOTE: Before performing any type of installation, cleaning, or removing a light bulb, turn the control (Thermostat, Refrigerator or Freezer Control depending on the model) to OFF and then disconnect the refrigerator from the electrical source. When you are finished, reconnect the refrigerator to the electrical source and reset the control (Thermostat, Refrigerator or Freezer Control depending on the model) to the desired setting. See "Using the Controls."

Water: A cold water supply with water pressure between 30 and 120 psi (207 and 827 kPa) is required to operate ice maker and water dispenser. If you have questions about your water pressure, call a licensed, qualified plumber.

IMPORTANT: The pressure of the water coming out of a reverse osmosis system going to the water inlet valve of the refrigerator needs to be between 30 and 120 psi (207 and 827 kPa).

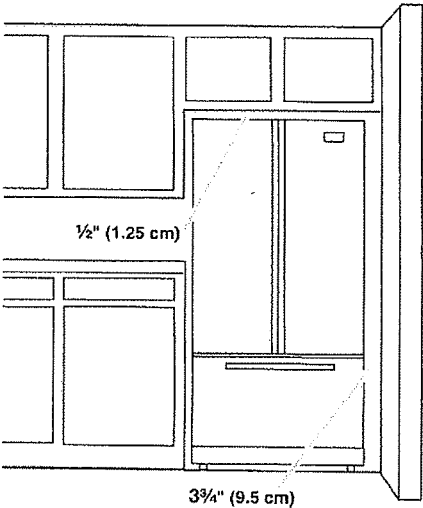
Reverse Osmosis Water Supply: If a reverse osmosis water filtration system is connected to your cold water supply, the water pressure to the reverse osmosis system needs to be a minimum of 40 to 60 psi (276 to 414 kPa).

PRODUCT DIMENSIONS



Model #	Model Size	Height - Overall "A"	Height - Top of Cabinet "B"	Depth - Doors Open 90° "C"	Depth - Drawer Open "D"	Depth - With Handles "E"	Depth - Without Handles "F"	Depth - Cabinet Only "G"	Width - Cabinet "H"	Width - Door Open 90° "I"
MFC2062DE	20.0 cu.ft.	70 ¹ / ₈ " (178.1 cm)	68 ¹ / ₂ " (174.0 cm)	43 ¹ / ₈ " (109.6 cm)	48 ¹ / ₈ " (122.3 cm)	29 ¹ / ₂ " (74.9 cm)	28" (71.1 cm)	24 ¹ / ₂ " (61.3 cm)	35 ⁵ / ₈ " (90.5 cm)	39 ⁹ / ₈ " (100.7 cm)
MFF2258DE	22.1 cu.ft.	70 ¹ / ₈ " (178.1 cm)	68 ¹ / ₂ " (174.8 cm)	47 ¹ / ₈ " (119.6 cm)	52 ¹ / ₂ " (132.4 cm)	34 ⁷ / ₁₆ " (87.5 cm)	31 ¹ / ₂ " (81.1 cm)	28 ¹ / ₈ " (71.4 cm)	32 ⁵ / ₈ " (82.9 cm)	42 ³ / ₈ " (107.6 cm)
MFF2558DE	25.2 cu.ft.	70 ¹ / ₈ " (178.1 cm)	68 ³ / ₄ " (174.6 cm)	48" (121.9 cm)	53 ¹ / ₂ " (134.9 cm)	35 ¹ / ₂ " (90.2 cm)	32 ³ / ₈ " (83.5 cm)	29 ¹ / ₈ " (74.0 cm)	35 ⁵ / ₈ " (90.5 cm)	43 ³ / ₈ " (110.2 cm)

LOCATION REQUIREMENTS



To ensure proper ventilation for your refrigerator, allow for a 1/2" (1.25 cm) space on each side and at the top. Allow for 1" (2.54 cm) of space behind the refrigerator. If your refrigerator has an ice maker, make sure you leave some extra space at the back for the water line connections.

If you are installing your refrigerator next to a fixed wall, leave 3/4" (9.5 cm) minimum on the hinge side (depending on your model) to allow for the door to swing open.

NOTE: It is recommended that you do not install the refrigerator near an oven, radiator, or other heat source, nor in a location where the temperature will fall below 55°F (13°C).

Because Whirlpool Corporation policy includes a continuous commitment to improve our products, we reserve the right to change materials and specifications without notice.

Dimensions are for planning purposes only. For complete details, see Installation Instructions packed with product. Specifications subject to change without notice.

Ref. W10621529A
8/21/14