



CONSTRUCTION SUMMARY

367 - 4 - The Rideau 6 (42-6) Elev B

Extras at Time of Sale

VENDOR TO SUPPLY AND INSTALL A 5 FT. BY 8 FT. DECK WITH STAIRS TO GRADE
Worksheet    Note:

CEILINGS

Inv.1,668	1 - 10 FOOT CEILINGS ON MAIN FLOOR – INCLUDES 8 FOOT INTERIOR DOORS, 8 FOOT INTERIOR ARCHWAYS, 8 FOOT FRONT DOOR, SIDE WINDOWS WITH 18 INCH TRANSOM, 8 FOOT GARDEN/FRENCH DOOR, STANDARD PATIO SLIDING DOOR 24 INCH TRANSOM.
Line16289	Note:
9Feb17 / 18Apr17	

Inv.1,668	1 - 9 FOOT CEILING ON SECOND FLOOR
Line16290	Note:
9Feb17 / 18Apr17	

Inv.1,668	1 - 9 FOOT CEILINGS IN BASEMENT
Line16291	Note:
9Feb17 / 18Apr17	

CONSTRUCTION

Inv.1,668	1 - DELETE WALL BETWEEN BREAKFAST AREA / GREAT ROOM. AS PER SKETCH # 1
Line16294	Note:
9Feb17 / 18Apr17	

DOOR - INTERIOR

Inv.1,696	1 - INCREASE ALL STANDARD SECOND FLOOR DOORS FROM 7FT TO 8FT. AS PER SKETCH
Line16507	Note: 19 X DOORS TOTAL
26Feb17 / 18Apr17	

HEATING AND AIR CONDITIONING

Inv.1,668	1 - GAS LINE - ROUGH IN GAS LINE - STOVE
Line16292	Note:
9Feb17 / 18Apr17	

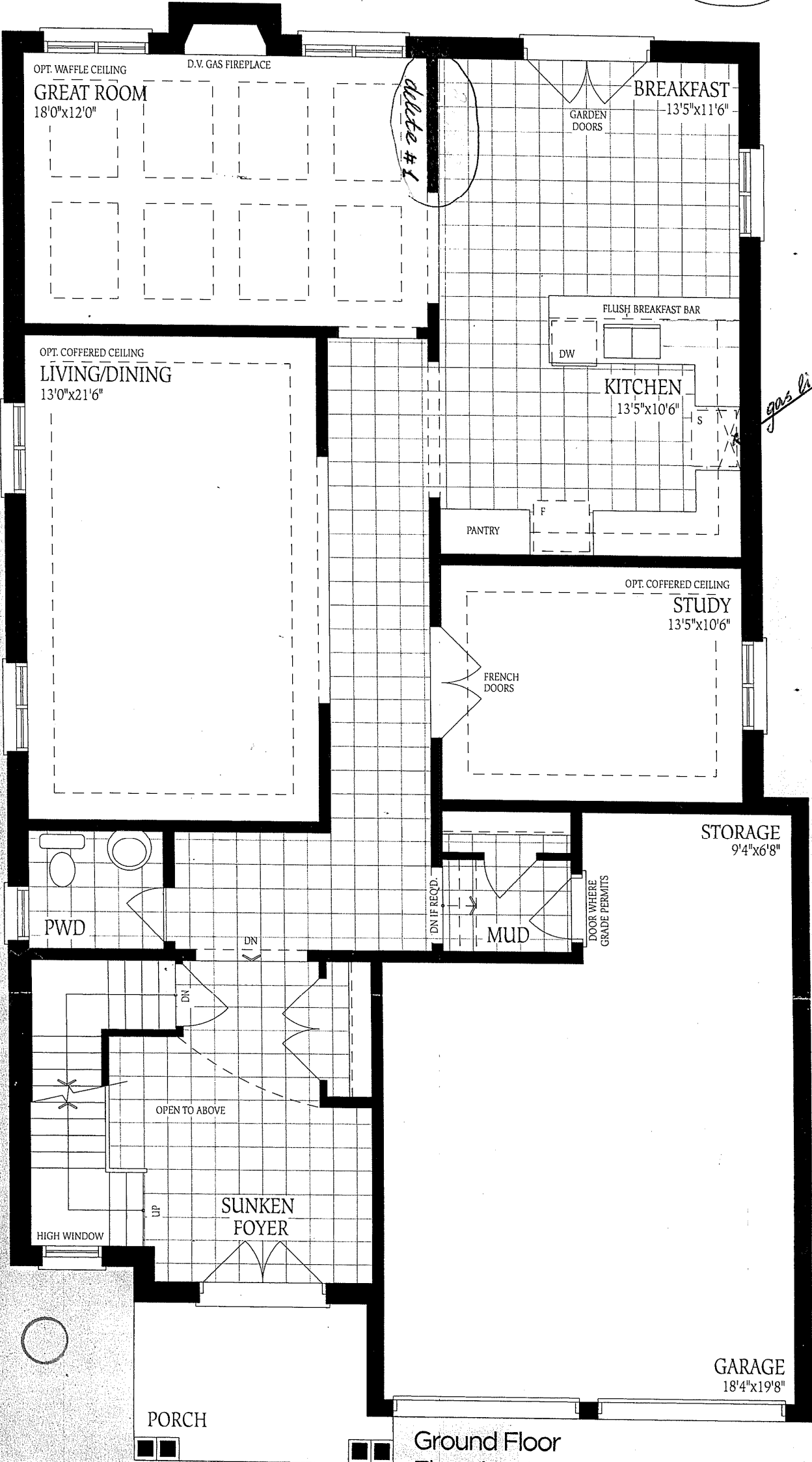
WINDOWS - BASEMENT

Inv.1,668	3 - BASEMENT WINDOW - 47 X 30
Line16293	Note: AS PER SKETCH
9Feb17 / 18Apr17	

42' singles

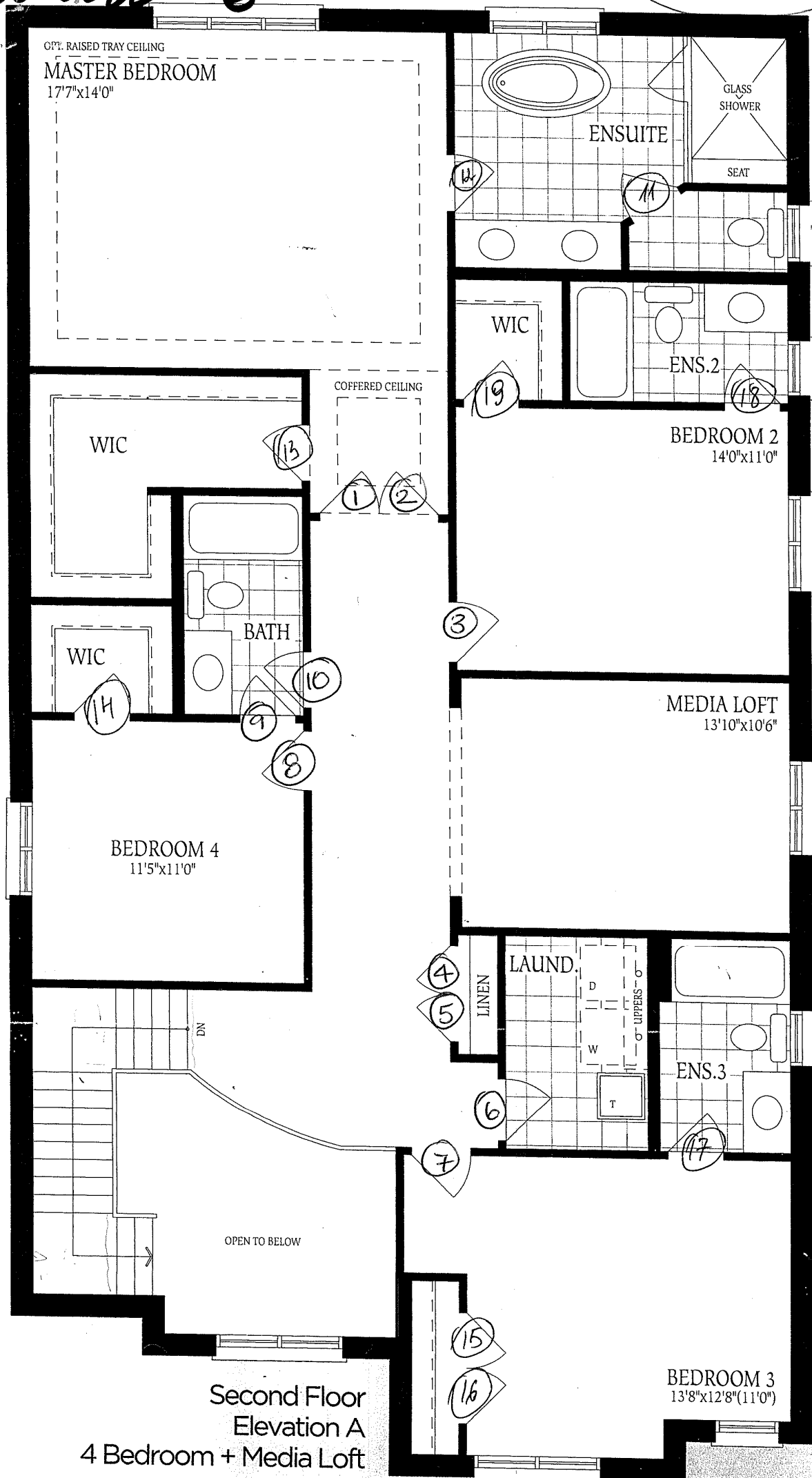
Rideau - 6

lot  
367



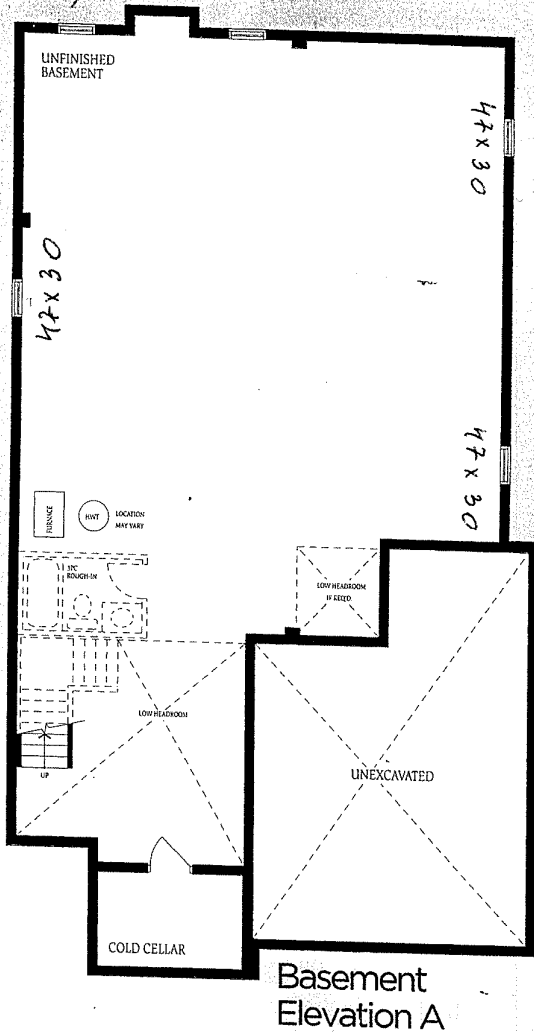
idea-6

lot 367

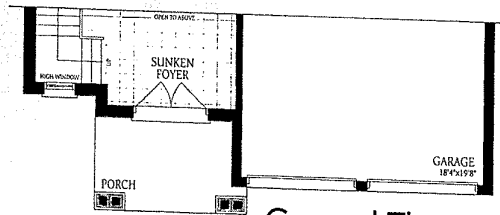


24/1

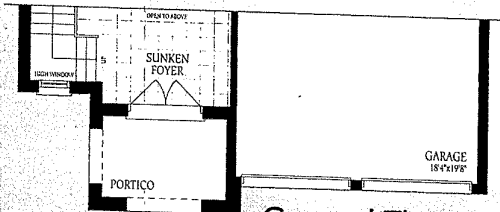
30x24 STD WOD.



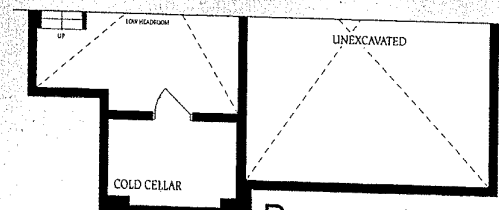
Basement Elevation A



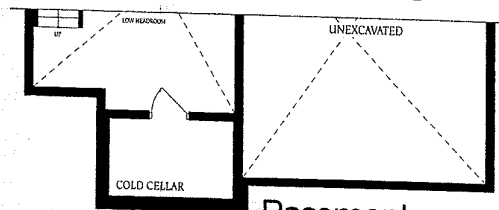
Ground Floor Elevation B



Ground Floor Elevation C



Basement Elevation B



Basement Elevation C

Rideau - 6

Lot 367

30x24

18