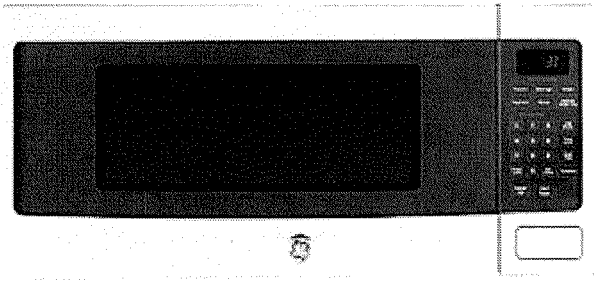


LOT 2046

1.1 CU. FT. SPACE MAKER MICROWAVE OVEN
Model #: PEM10SFC



Weight: 33 lbs

FEATURES

Child Lock-Out

You may lock the control panel to prevent the microwave from being accidentally started or used by children.

800 Watts of Cooking Power

Electronic Scrolling Digital Display

The Scrolling Display gives you the flexibility of programming several functions at once for meal preparation.

Turntable On / Off Option - Ideal for oversized, oblong-shaped dishes

ACCESSORIES

Optional Under Cabinet Hanging Kit	JX10PEM	Optional 30" Built-In Kit	JX830SFC
Optional 27" Built-In Kit	JX827SFC		

APPEARANCE

Door Colour	Stainless Steel	Case Colour	Black
Colour Appearance	SS		

CAPACITY

Oven Cavity (cu. ft.)	1.1
-----------------------	-----

FEATURES

Install Location	Multi (Countertop, Built-in, Undercounter)	Turntable	Glass
Instant On Controls	Yes	Display On/Off	sub-pad w/ zero
Help Pad	Yes	Kitchen Timer / Timer (On/Off)	No / Yes
Electronic Touch Controls	Yes	Demo Mode	Yes
Cooking System	Turntable	Turntable On / Off	Yes

Turntable Size (in.)	10-5/8
Clock	Plus AM/PM pad
Defrost Type	Auto & Time
Child Lockout	Yes
Potatoes	Instant-on
Time Preference	Control Enhancement (1/9)
Express Cook	Instant-on 1-6 minutes
Reminder (24 hr)	Yes
Fish	Instant-On (Chicken/Fish)
Variable Scroll Speed	subpad w/ AM/PM pad
Chicken	Instant-On (Chicken/Fish)
Cooking System	Solo

POWER & RATINGS

Frequency (MHz)	2450
Electrical Input @ 120V Amperage	11.5

WARRANTY

One-Year Warranty	Limited ;Entire Appliance; Parts&Labour; Carry-In
-------------------	--

WEIGHTS & DIMENSIONS

Cavity (W x H x D)	17 2/5 x 9 x 11 4/5
Overall Height	12
Approximate Shipping Weight (lbs)	33

Electronic Scrolling Digital Display	Yes
Time Cook	I & II
Add 30 Seconds	Instant-On
Popcorn	Instant-on
Rheat	Instant-On
Vegetables	Instant-On
Watts IEC-705 Test Procedure	800
Cooking Complete Reminder	Yes
Power Levels	10
Beverage	Instant-On
Delay Start	Yes

Electrical Input @ 120V Watts	1300
-------------------------------	------

Overall Width	24
Overall Depth (excluding handle)	13 5/16

This site uses cookies. By continuing to browse the site you are agreeing to our use of cookies.
Find out more here

LOT 206.

Home / Home Appliances / Cooking Appliances / All Cooking Appliances / Oven / NE9000K Electric Range With 5 Burners, 5.8 Cu.f

BENEFITS SPECS REVIEWS SUPPORT COMPARE



NE58M9430SS/AC
**NE9000K Electric Range
with 5 burners, 5.8 cu.ft**

- Enhanced cooking control & flexibility
- Easily see everything inside
- Easy to install & stylish built-in look

WHERE TO BUY

ZOOM IN

Slide-in

Installation Type

5 EA

Number of Burner

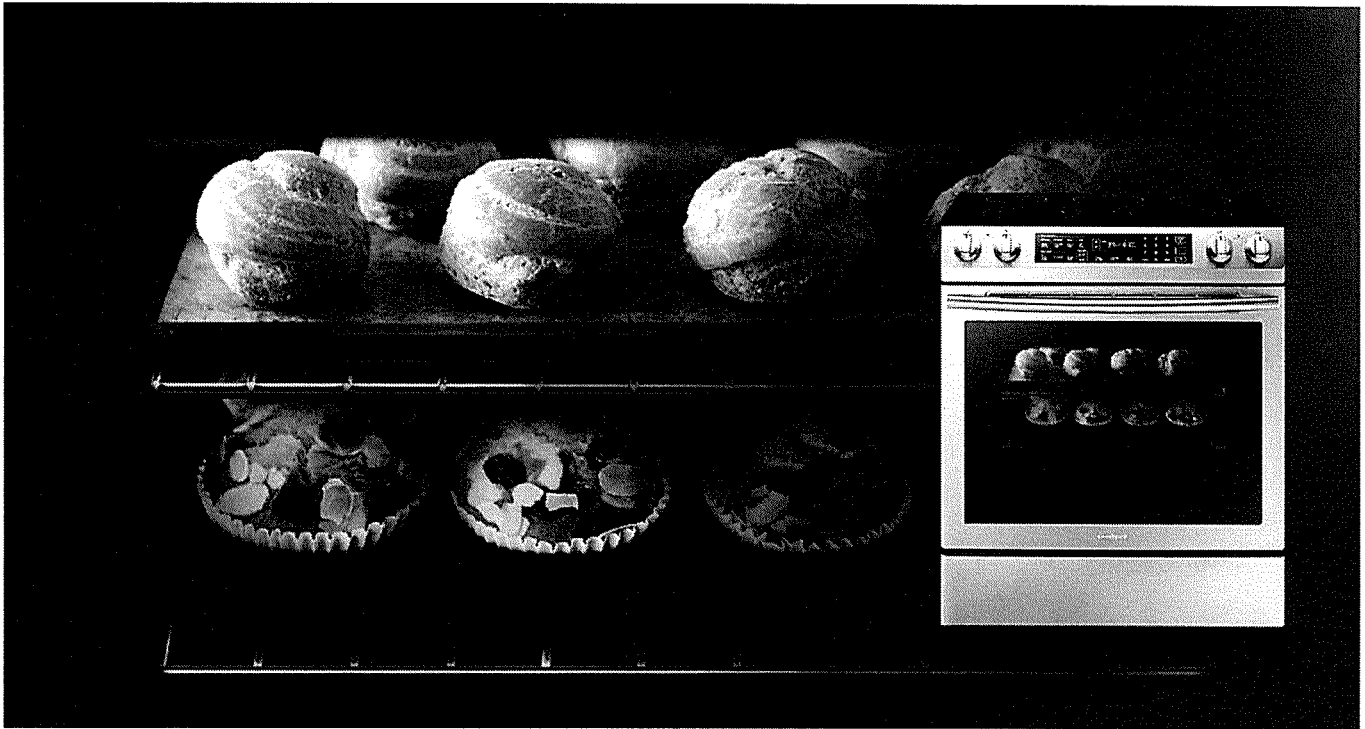
Enhanced cooking control & flexibility

A five burner cooktop, including Dual Burners with a choice of ring sizes, ensures you can simply and efficiently cook multiple dishes using different sized pots and pans and quickly and evenly cook bigger meals.



Easily see everything inside

A Wide View Door lets you see everything inside from corner to corner. There's a wider door screen, so you can easily keep an eye on whatever you're cooking without continually opening the door and wasting heat.



Easy to install & stylish built-in look

Its slide-in design provides a built-in look, but is very easy to install. Simply nestle it between existing cabinets for a truly harmonious appearance that will instantly upgrade your kitchen without any hassle.



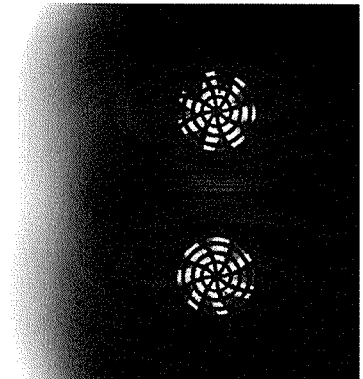
Keep it neat with heat to burn off residue

A Self Cleaning system keeps your oven neat and clean without any time-consuming scrubbing. It heats the oven cavity to burn off any grease and residue left from cooking, with just some fine ash to wipe away.

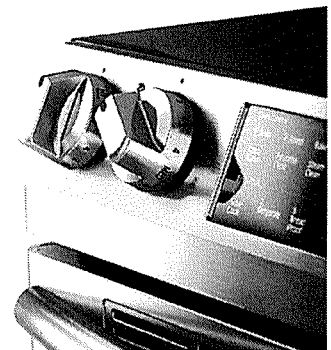


Fast, thorough and tastier cooking

A True Convection system cooks food fast and evenly, so it's great for baking and broiling. A heated fan distributes heat all around the oven, so dishes are cooked thoroughly and you enjoy tastier results.



Convenient and precise controls



Its large and premium looking metallic knobs are easy to grip, but electronically adjust the level of heat to ensure precise control. They offer a familiar user experience and are very intuitive and easy to use.

Slide-in

Installation Type

5 EA

Number of Burner

SHOW ALL SPECS

There are no user reviews yet.

BE THE FIRST TO REVIEW

Why Does my Oven Make A Popping Sound?

SEE THE ANSWER

Gas Ranges: How Do I Use the Self-Cleaning Oven?

SEE THE ANSWER

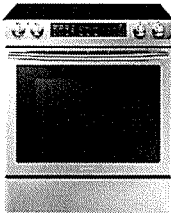
User manual & Downloads

SEE MORE CONTENT

SEE ALL SUPPORT

How It Stacks Up

LEARN MORE



NX58M3310S
Large Cap

NE9000K Electric Range with 5
burners, 5.8 cu.ft

NE7000J Ele
Flex Duo™ s

		Slide-in
Number of Burner	Number of Burner	5 FA
Oven Capacity		

Recently Viewed



NE9000K Electric Range with 5 burners, 5.8 cu.ft

* Key feature may different from Key Spec

[Back to top](#)

Sitemap

- About Us
- Investor
- News
- Articles
- Find Offers
- Retail Locations
- Contact Us
- Newsletter
- Careers
- Samsung Account
- Product Registration

Need Support?

- Live Chat
- Phone Support
- Mail Support

Stay in the loop?



Copyright© 1995-2017 SAMSUNG All Rights Reserved.

ACCESSIBILITY HELP PRIVACY

LEGAL

🇨🇦 CANADA/ENGLISH

This website is best viewed using Internet Explorer 9, Chrome, Safari and newer browsers.