



CONSTRUCTION SUMMARY

83N Right - 1 - The Sonoma 2 (SD25-2) Elev B

Extras at Time of Sale

Note:

CONSTRUCTION

Inv.89	1 - ROUGH IN GARAGE DOOR IF GRADE DOES NOT PERMIT.
Line578	Note: GRADE DOES NOT PERMIT - ROUGH IN ONLY - NO DOOR PROVIDED.
26Jan21 / 22Feb21	

ELECTRICAL

Inv.89	1 - CEILING ROUGH IN - ON NEW SWITCH - OVER BREAKFAST BAR CENTERED
Line574	Note:
26Jan21 / 22Feb21	

MISCELLANEOUS

Inv.68	1 - 5 APPLIANCES - STAINLESS STEEL: FRIDGE, RANGE, DISHWASHER AND HOOD FAN – WHITE: WASHER AND DRYER. FROM VENDORS STANDARD LINE.
Line532	Note: AS PER BONUS
13Jan21 / 18Jan21	

STAIRS AND RAILING

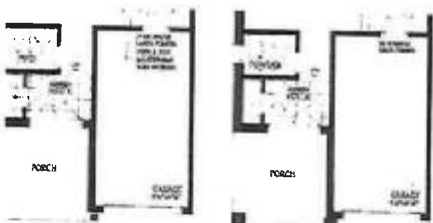
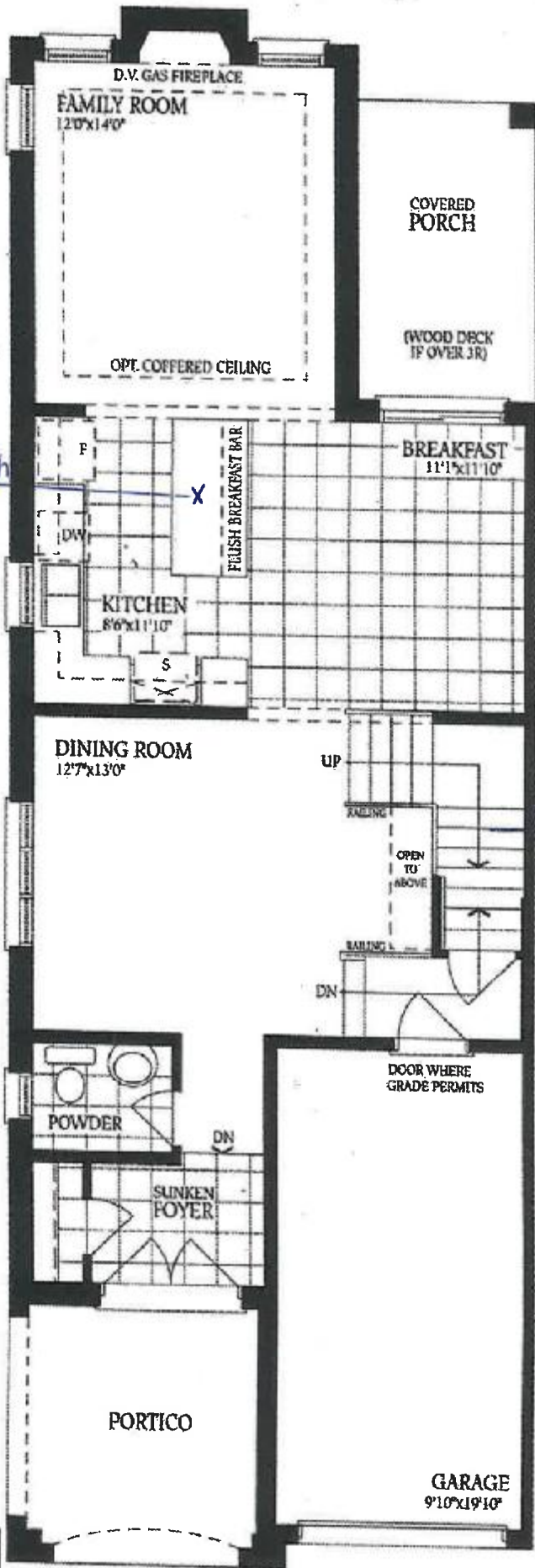
Inv.89	1 - UPGRADE 1 - WROUGHT IRON STAIRCASE FROM MAIN TO SECON FLOOR
Line573	Note:
26Jan21 / 22Feb21	

WINDOWS - EXTERIOR

Inv.89	1 - WINDOWS -BASEMENT WINDOW- EXTERIOR - 30X24 IN LIEU OF STANDARD 30X16 WINDOWS
Line576	Note: SIDE WINDOWS NOT POSSIBLE 1 REAR WINDOW - AS PER SKETCH - WINDOW WELL IS NEEDED
26Jan21 / 22Feb21	

The Sonoma 2

ELEVATION A - 1895 SQ.FT.
ELEVATION B - 1893 SQ.FT. - Lot 83 Right
ELEVATION C - 1904 SQ.FT.

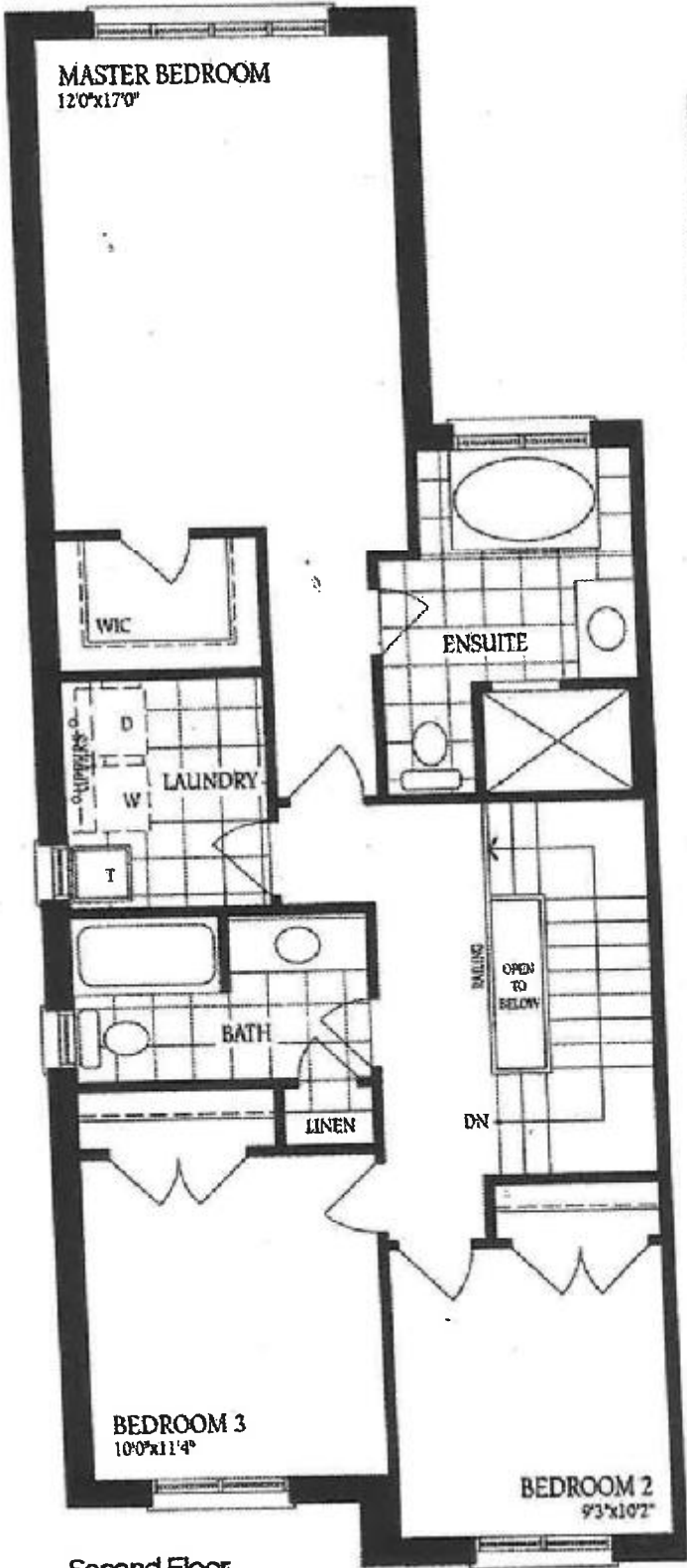


Ground Floor - Elevation B Ground Floor - Elevation C & C-Mod

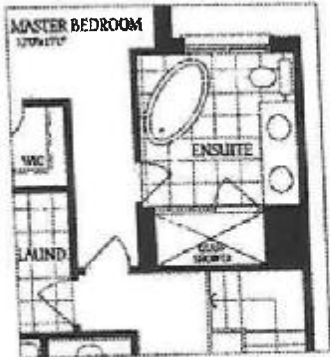
Ground Floor - Elevation A

The Sonoma 2

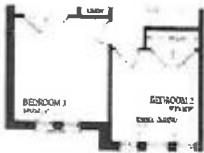
ELEVATION A - 1895 SQ.FT.
ELEVATION ~~B~~ - 1893 SQ.FT. - Lot 83 Right
ELEVATION C - 1904 SQ.FT.



Second Floor
Elevation A



Optional Second Floor
with Alternate Ensuite



Second Floor
Elevation B



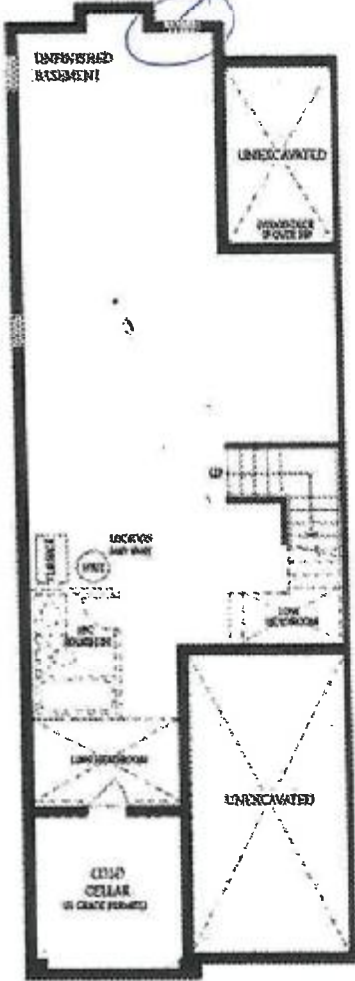
Second Floor
Elevation C - Mod.
Total for Elev. C-Mod:
1915 sq.ft.

DS
B. K. R. J.

The Sonoma 2

ELEVATION A - 1895 SQ.FT.
ELEVATION B - 1893 SQ.FT. - Lot 83 Right
ELEVATION C - 1904 SQ.FT.

Enlarge Basement window to 30 x 24



Basement