



# CONSTRUCTION SUMMARY

## 10 - 2 - The Golden Eye 2 (S48-2) Elev B

### Extras at Time of Sale

Note:

### CONSTRUCTION

Inv.395	1 - BASEMENT WINDOW - EGRESS - 48 X 60
Line3402	Note: LOCATED BELOW KITCHEN AS PER SKETCH.
17Jun21 / 17Sep21	
Inv.395	1 - FREE STANDING TUB IN LIEU OF TUB AND DECK- MASTER ENSUITE
Line3403	Note:
17Jun21 / 17Sep21	
Inv.395	1 - OPEN CLOSET WALLS (REMOVING DOORS). CLOSET HARDWARE TO REMAIN.
Line3404	Note: AS PER SKETCH
17Jun21 / 17Sep21	

### CONSTRUCTION - STRUCTURAL CHANGES

Inv.395	1 - CEILINGS - SMOOTH CEILINGS - MAIN FLOOR
Line3390	Note:
17Jun21 / 17Sep21	
Inv.395	1 - CEILINGS - SMOOTH CEILINGS - 2ND FLOOR
Line3391	Note:
17Jun21 / 17Sep21	
Inv.395	1 - GLASS SHOWER DOOR - GLASS SHOWER ENCLOSURE
Line3395	Note:
17Jun21 / 17Sep21	

### ELECTRICAL

Inv.395	1 - ELECTRICAL - SUPPLY AND INSTALL CAPPED CEILING FIXTURE ROUGH IN ON NEW SWITCH (FIXTURE NOT INCLUDED)
Line3393	Note: Centered in the family room
17Jun21 / 17Sep21	
Inv.395	1 - ELECTRICAL - SUPPLY AND INSTALL CAPPED CEILING FIXTURE ROUGH IN ON NEW SWITCH (FIXTURE NOT INCLUDED)
Line3394	Note: Centered in the Living Room.
17Jun21 / 17Sep21	
Inv.395	2 - ELECTRICAL - SUPPLY AND INSTALL 2 ADDITIONAL POT LIGHTS ON 2ND FLOOR
Line3405	Note: LOCATED IN THE MASTER ENSUITE ABOVE THE FREE STANDING TUB.
17Jun21 / 17Sep21	

### HEATING AND AIR CONDITIONING

Inv.395	1 - GAS LINE ROUGH IN -IN BASEMENT - FOR STOVE FLEX
Line3792	Note: LOCATION AS PER SKETCH
17Jun21 / 17Sep21	
Inv.395	1 - GAS LINE - ROUGH IN GAS LINE - PER APPLIANCE - STOVE FLEX
Line3396	Note: In Kitchen for Gas Stove
17Jun21 / 17Sep21	



# CONSTRUCTION SUMMARY

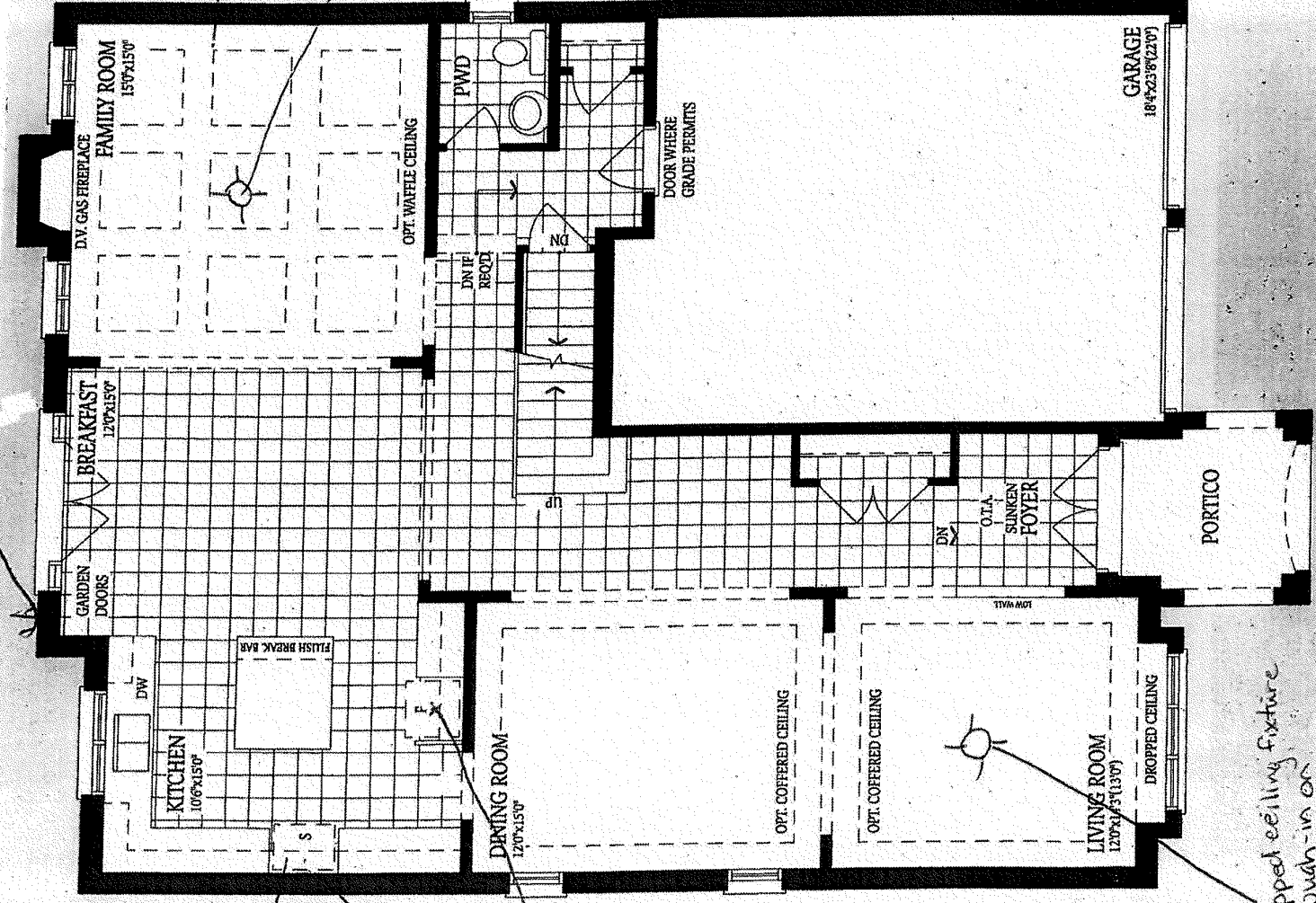
## 10 - 2 - The Golden Eye 2 (S48-2) Elev B

Inv.395	1 - GAS LINE - ROUGH IN GAS LINE - PER APPLIANCE - BBQ
Line3397	Note:
17Jun21 / 17Sep21	
Inv.395	1 - GAS LINE - ROUGH IN GAS LINE FOR 2ND FLOOR
Line3398	Note: For Gas Dryer
17Jun21 / 17Sep21	

### PLUMBING

Inv.395	1 - PLUMBING - FRIDGE LINE
Line3399	Note:
17Jun21 / 17Sep21	
Inv.395	1 - PLUMBING - ROUGH-IN POT FILLER
Line3400	Note:
17Jun21 / 17Sep21	
Inv.395	1 - PLUMBING - ROUGH-IN EXTRA LAUNDRY (WASTE/VENTS AND WATER LINES)
Line3401	Note: LOCATED AS PER SKETCH
17Jun21 / 17Sep21	

gas line  
for BBQ



Smooth ceilings  
on main  
Capped ceiling fixture  
Rough-in on  
New switch - centered

gas line - stove  
Pot Filler  
fridge  
water line

Capped ceiling fixture  
rough-in on  
new switch - centered

### GROUND FLOOR ELEVATION A

DS JS

LOT 10  
Golden Eye 2  
Elev. B.

2 potlights  
above freestanding  
tub

Replace tub + deck  
with freestanding  
tub.

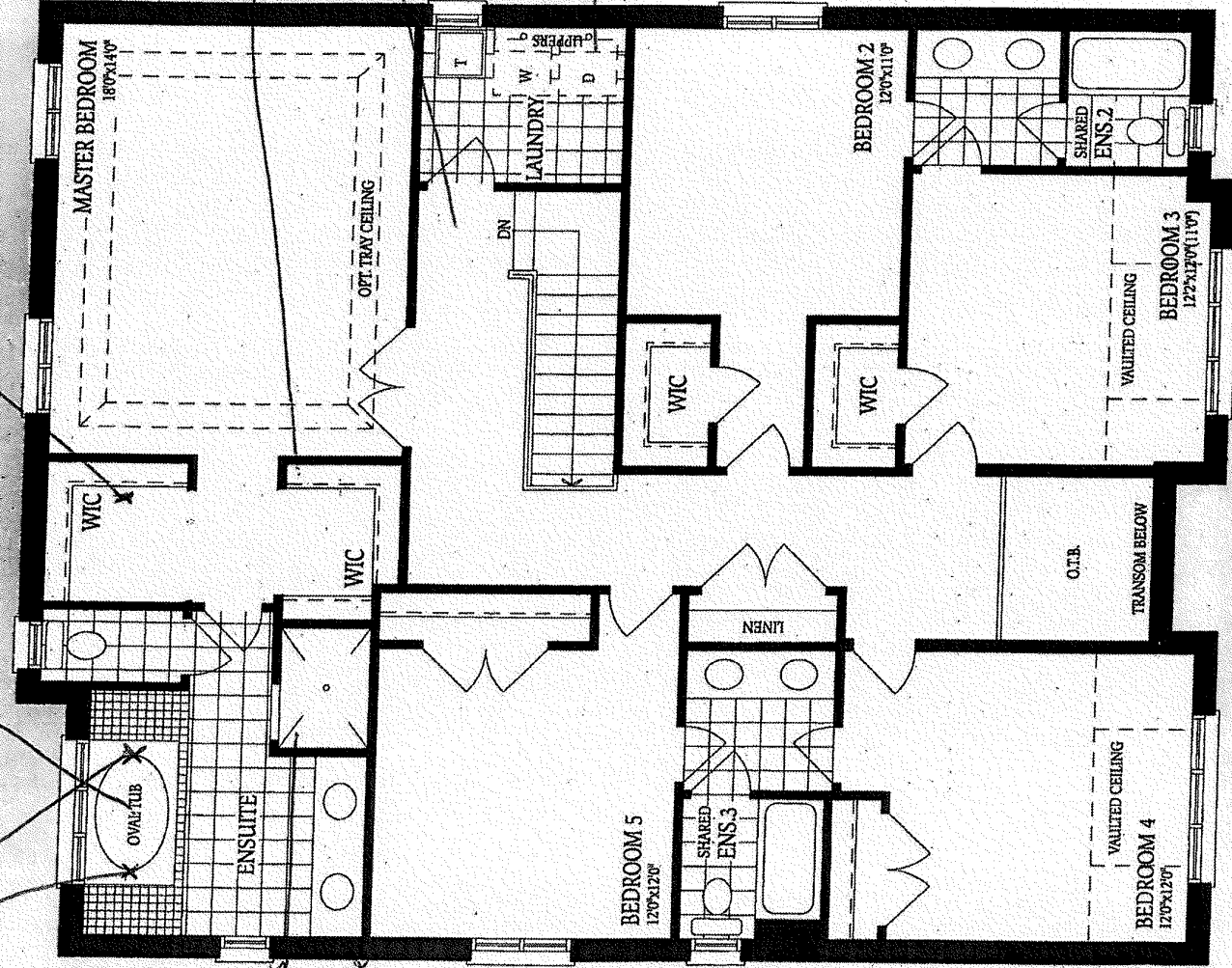
Remove walls  
with closet doors  
\* Closet hardware to  
remain.

Frameless  
glass  
shower  
enclosure

Open closet  
walls as per  
sketch (leave hard work)

Smooth  
ceilings 2nd  
floor

gas line  
for dryer



SECOND FLOOR  
ELEVATION A

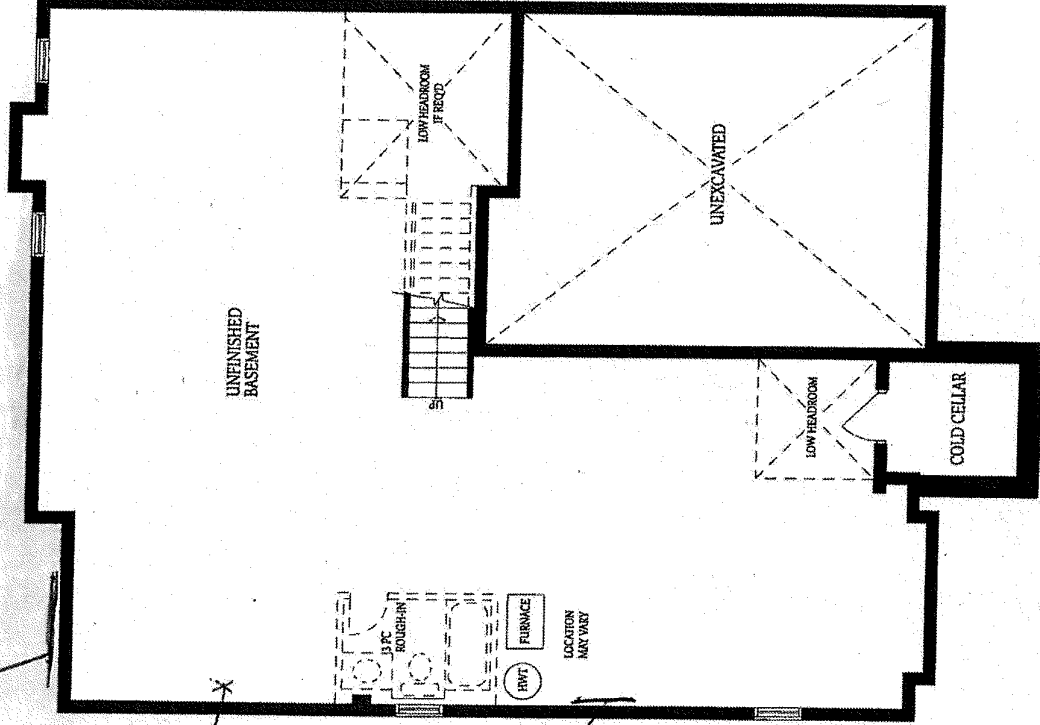
DS JS

LOT 10  
Golden Eye 2  
Elev. B

Add window 48x60  
or window

gas line  
BSMT.

Rough-in  
laundry

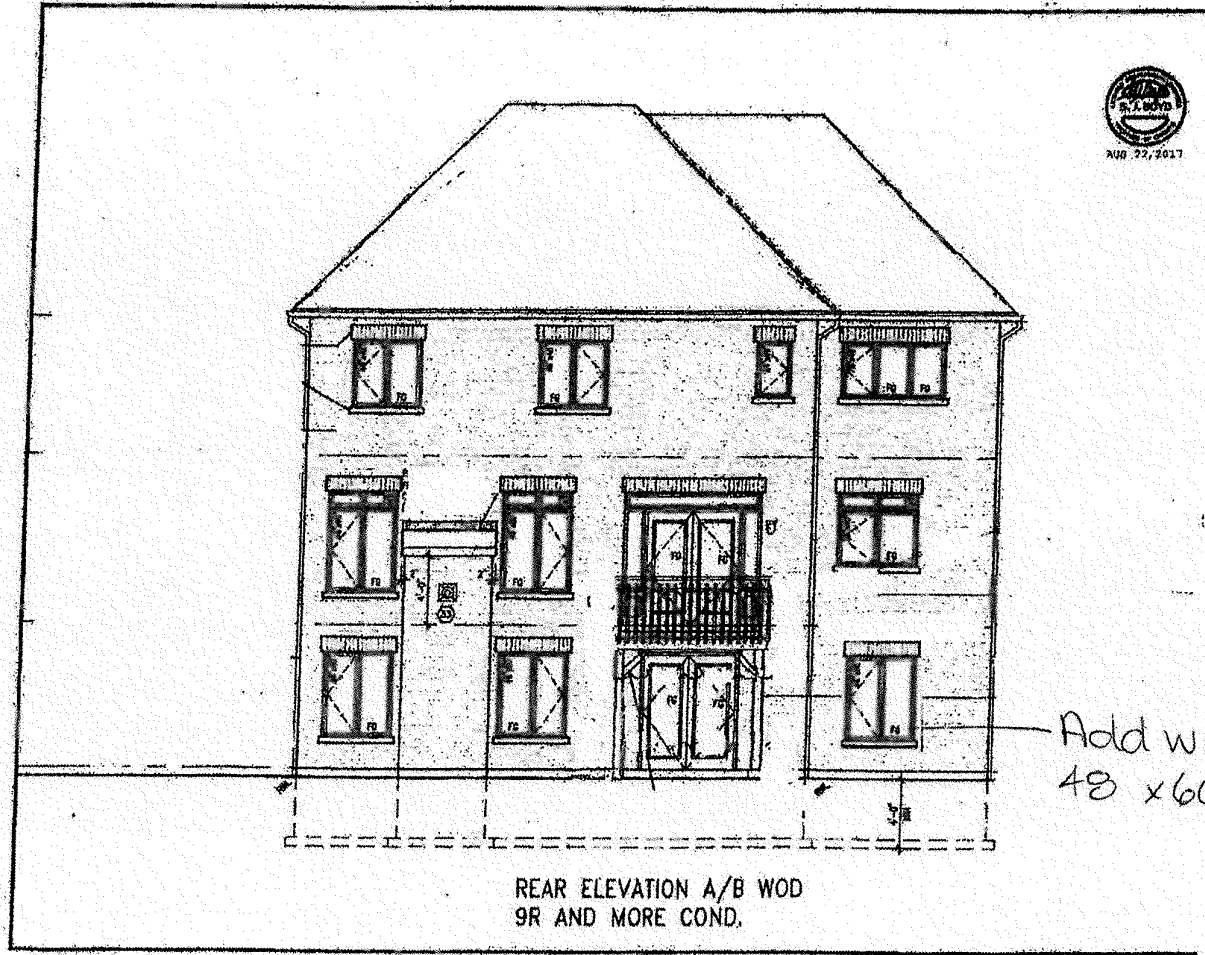


# BASEMENT ELEVATION A

JS

DS

LOT10  
Golden Eye 2  
Elev. B



DS  
NS

DS  
*[Signature]*

LOT 10  
GoldenEyez  
Elev. B