



CONSTRUCTION SUMMARY

Block 163 Unit 5 - 2 - The Napa 12 (THWU-12) Elev A

Extras at Time of Sale

Note:

CEILINGS

Inv.977	1 - CEILINGS - SMOOTH CEILINGS THROUGHOUT MAIN AND SECOND FLOOR
Line9772	Note:
23Jul22 / 11Aug22	

ELECTRICAL

Inv.977	1 - ELECTRICAL - EXTRA INTERIOR CEILING OUTLET ROUGH-IN - NO FIXTURE - ON NEW SWITCH (OVER BREAKFAST BAR AS PER SKETCH)
Line9774	Note:
23Jul22 / 11Aug22	

HEATING AND AIR CONDITIONING

Inv.977	1 - HEATING AND AIR CONDITIONING - INCREASE KITCHEN EXHAUST TO 8 INCH
Line9771	Note:
23Jul22 / 11Aug22	

Inv.977	1 - HEATING AND AIR CONDITIONING - ROUGH IN GAS LINE - KITCHEN STOVE
Line9768	Note:
23Jul22 / 11Aug22	

INTERIOR TRIM

Inv.977	1 - INTERIOR TRIM - 8 FOOT DOORS AND ARCHES - GROUND FLOOR
Line9790	Note:
23Jul22 / 11Aug22	

PLUMBING

Inv.977	1 - PLUMBING - WATERLINE FOR ICE MAKER HOOK UP - INCLUDES VALVE
Line9769	Note:
23Jul22 / 11Aug22	

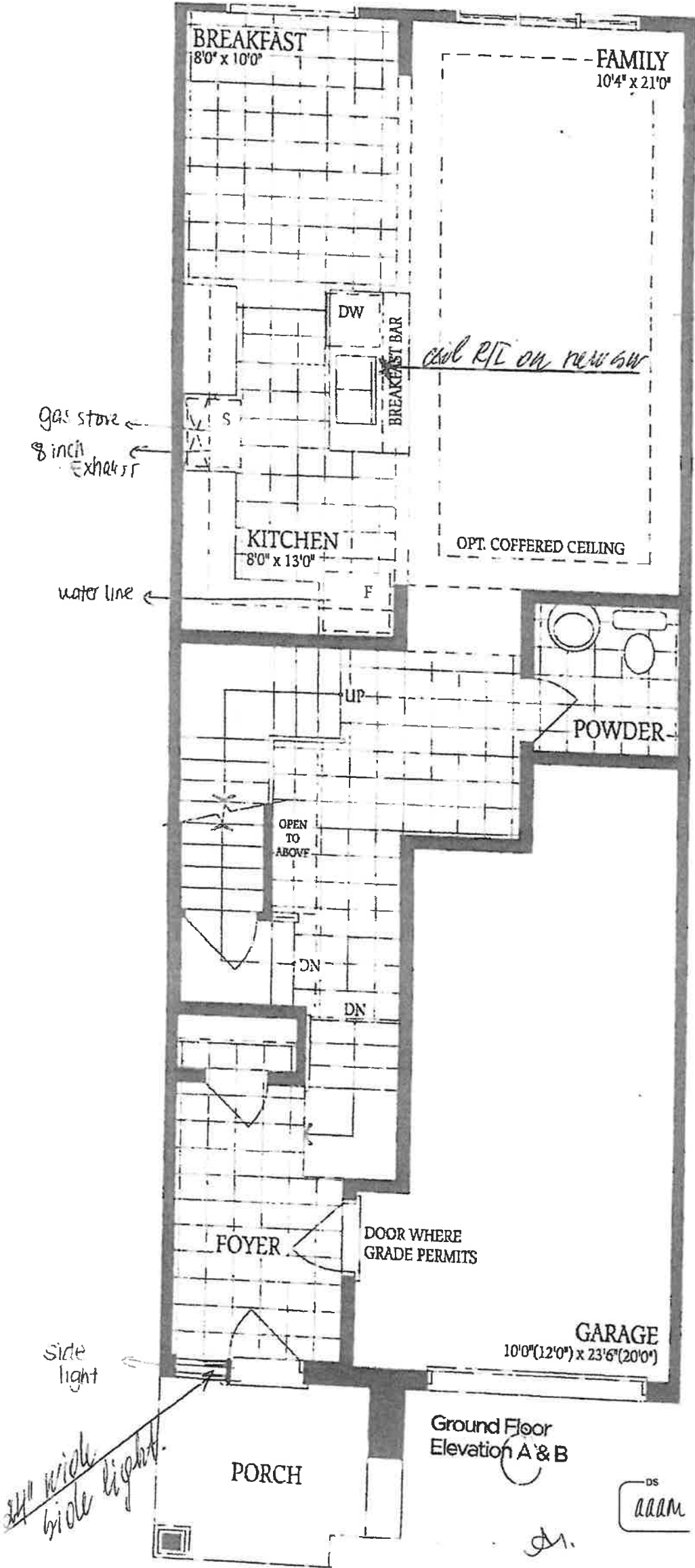
WINDOWS - BASEMENT

Inv.977	2 - BASEMENT WINDOW - 30 X 30
Line9766	Note:
23Jul22 / 11Aug22	

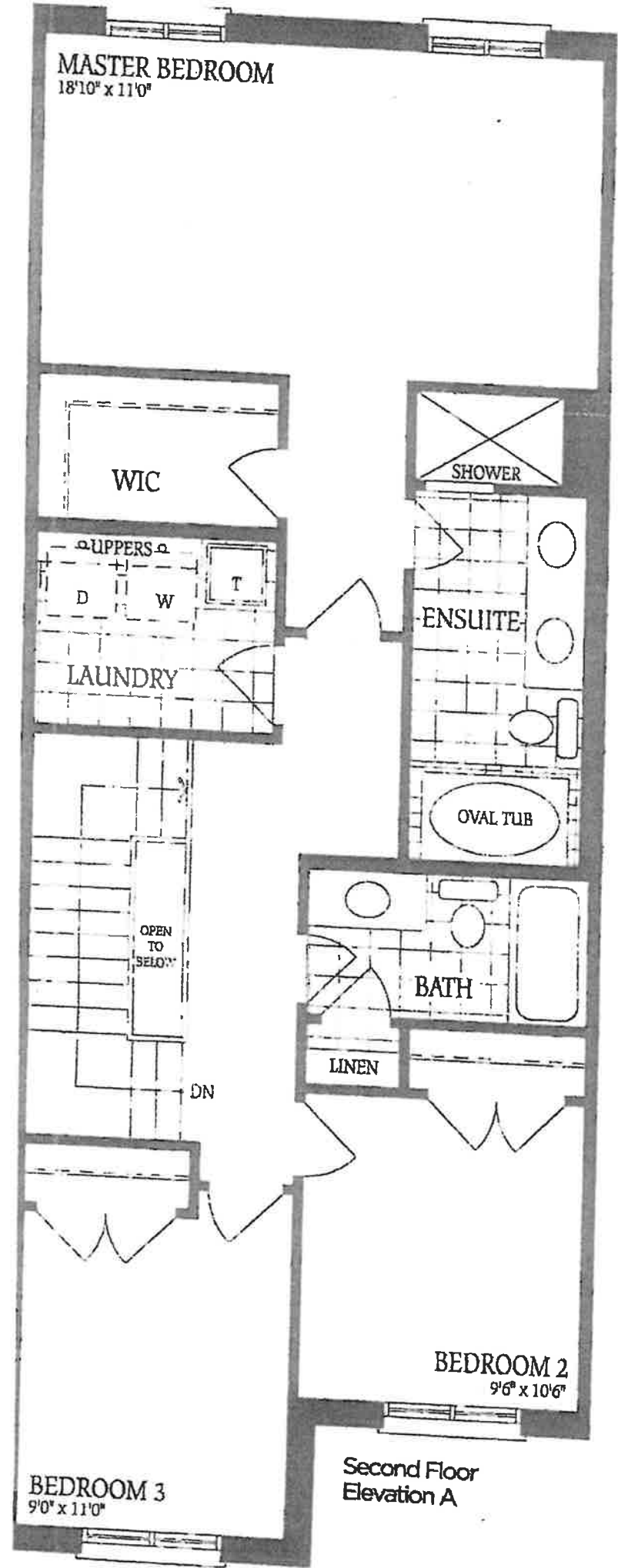
Inv.977	2 - BASEMENT WINDOW - WINDOW WELL
Line9767	Note:
23Jul22 / 11Aug22	

WINDOWS - EXTERIOR

Inv.977	1 - 24 INCHES WIDE SIDE LIGHT WINDOW - BY FRONT DOOR-AS PER SKETCH
Line9770	Note:
23Jul22 / 11Aug22	



Napa 12
B/K 163-5

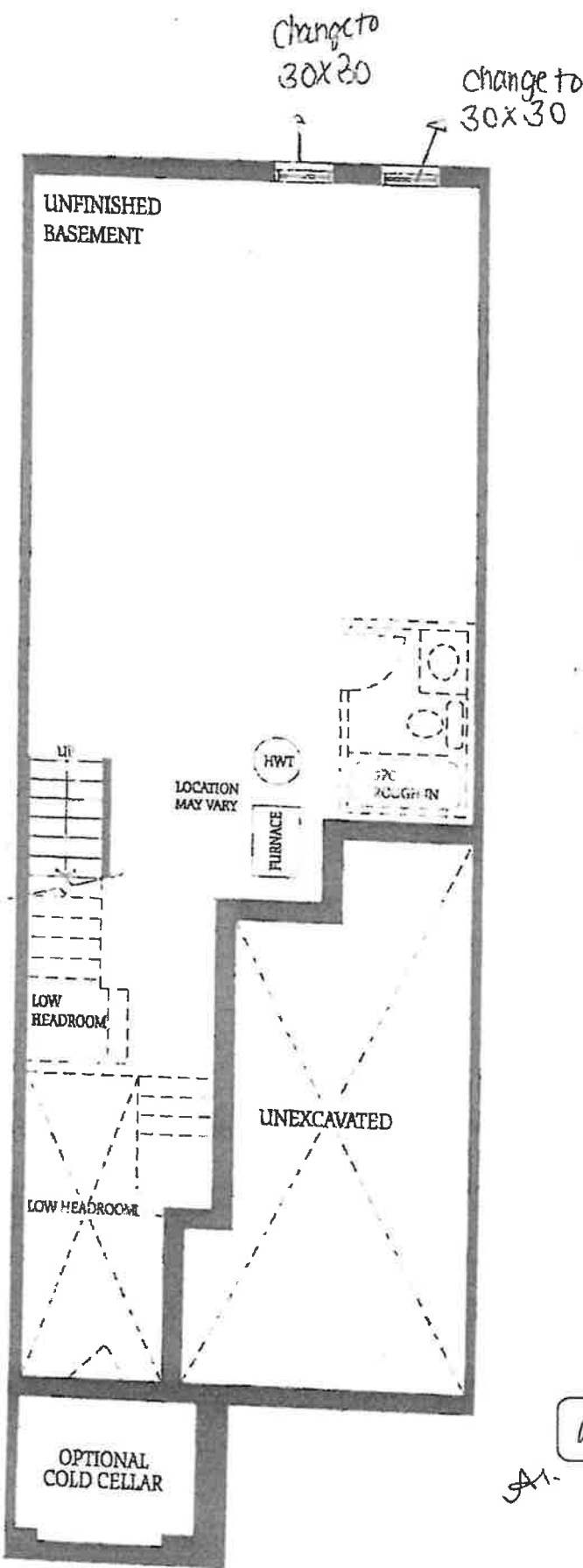


THE
NAPA 12

DS
AAM

SA1

BIK 163-5



DS
adam
A1.

Napa 12
BLK 163-5