

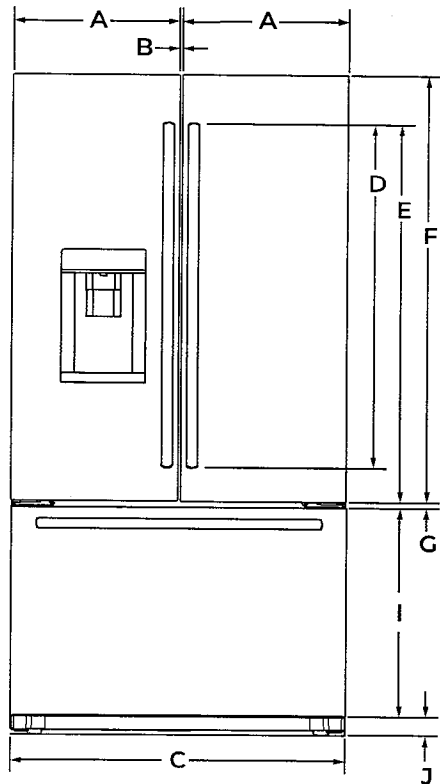


72" COUNTER-DEPTH FRENCH DOOR REFRIGERATOR WITH EXTERNAL DISPENSER

DETAILED PLANNING DIMENSIONS GUIDE

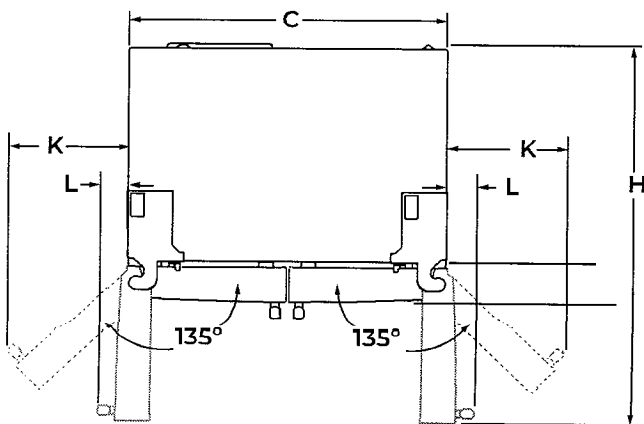
JFFCC72EH – 35³/₄" (W) x 71¹⁵/₁₆" (H) x 32³/₄" (depth with handles)

PRODUCT DIMENSIONS



FRONT VIEW

DIMENSION	DESCRIPTION	JFFCC72EH
A	Width of each door	17 ¹ / ₁₆ " (45 cm)
B	Space between doors	3/8" (9 mm)
C	Overall width	35 ³ / ₄ " (90.5 cm)
D	Height of door handles (RISE™)	32 ⁵ / ₈ " (82.9 cm)
E	Height to top of door handles (RISE™)	38 ¹ / ₁₆ " (98.2 cm)
F	Height of doors	46 ¹ / ₂ " (118.2 cm)
G	Space between doors and drawer	1/2" (1.2 cm)
H	Depth with doors open 90°	44" (111.7 cm)
I	Height of drawer	23" (58.4 cm)
J	Height of grille	1 ¹ / ₂ " (3.9 cm)
K	Width from side of refrigerator to handle – door fully open 135° (RISE™)	14" (35.5 cm)
L	Width from side of refrigerator to handle – door open 90° (RISE™)	4 ⁵ / ₁₆ " (11 cm)



TOP VIEW

Because Whirlpool Corporation policy includes a continuous commitment to improve our products, we reserve the right to change materials and specifications without notice.

Dimensions are for planning purposes only. For complete details, see Installation Instructions packed with product. Specifications subject to change without notice.

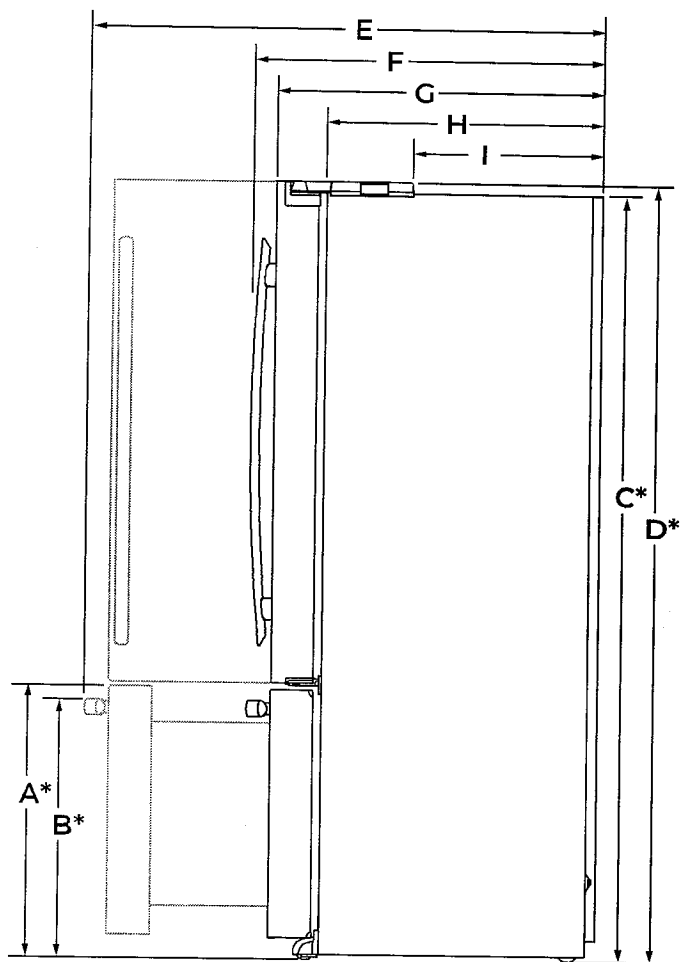
W11356674A



72" COUNTER-DEPTH FRENCH DOOR REFRIGERATOR WITH EXTERNAL DISPENSER

DETAILED PLANNING DIMENSIONS GUIDE

JFFCC72EH – 35 $\frac{3}{4}$ " (W) x 71 $\frac{15}{16}$ " (H) x 32 $\frac{3}{4}$ " (depth with handles)



SIDE VIEW

DIMENSION	DESCRIPTION	JFFCC72EH
A*	Height to top of drawer (min.)	24 $\frac{15}{16}$ " (63.3 cm)
B*	Height to top of drawer handle (min.)	23 $\frac{3}{4}$ " (60.4 cm)
C*	Height of recessed refrigerator (min.)	70 $\frac{15}{16}$ " (180.1 cm)
D*	Height to top of hinges (min.)	71 $\frac{15}{16}$ " (182.7 cm)
E	Depth with drawer fully open including drawer handle (min.)	46 $\frac{3}{4}$ " (118.8 cm)
F	Depth with handles (min.)	32 $\frac{3}{4}$ " (83.1 cm)
G	Depth with doors (min.)	29 $\frac{5}{16}$ " (74.4 cm)
H	Depth without doors (min.)	24 $\frac{5}{8}$ " (62.6 cm)
I	Depth to back of hinges (min.)	16 $\frac{3}{4}$ " (42.6 cm)

*Add 3/4" (1.9 cm) to the height dimension when leveling legs are fully extended.

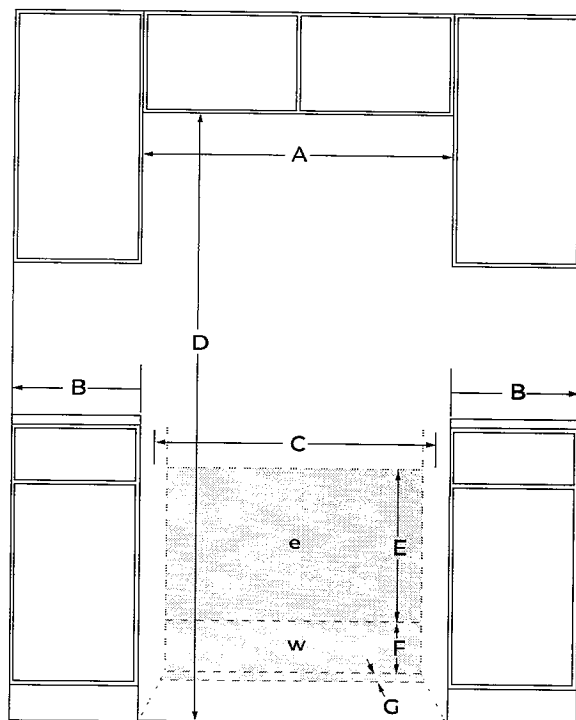


72" COUNTER-DEPTH FRENCH DOOR REFRIGERATOR WITH EXTERNAL DISPENSER

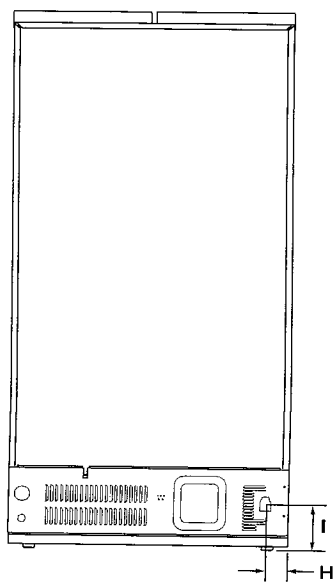
DETAILED PLANNING DIMENSIONS GUIDE

JFFCC72EH – 35 $\frac{3}{4}$ " (W) x 71 $\frac{5}{16}$ " (H) x 32 $\frac{3}{4}$ " (depth with handles)

OPENING/CLEARANCE DIMENSIONS



FRONT VIEW



BACK VIEW

DIMENSION	DESCRIPTION	JFFCC72EH
A	Width (min.)	36 $\frac{3}{4}$ " (93.3 cm)
B	Minimum width from side of refrigerator to fixed wall – door open 90°	3 $\frac{3}{4}$ " (9.5 cm)
	Minimum width from side of refrigerator to fixed wall – door open approx. 135°	12" (30.5 cm)
C	Width of recommended electrical/water installation area	35 $\frac{1}{2}$ " (90.2 cm)
D	Height (min.)	72 $\frac{1}{16}$ " (184 cm)
E	Height of recommended electrical installation area	Min. 24" (61 cm) Max. 36" (91.4 cm)
F	Height of recommended water installation area	12" (30.5 cm)
G	Depth of recommended water installation area	1" (2.5 cm)
H	Water line location – distance from side	2 $\frac{1}{2}$ " (6.4 cm)
I	Water line location – distance from bottom	7" (17.8 cm)
e	Recommended electrical connection location	
w	Recommended water connection location	

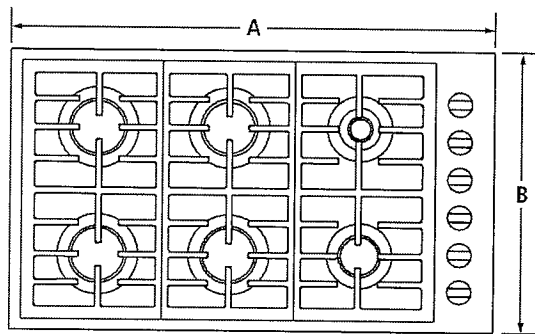
Because Whirlpool Corporation policy includes a continuous commitment to improve our products, we reserve the right to change materials and specifications without notice.

Dimensions are for planning purposes only. For complete details, see Installation Instructions packed with product. Specifications subject to change without notice.

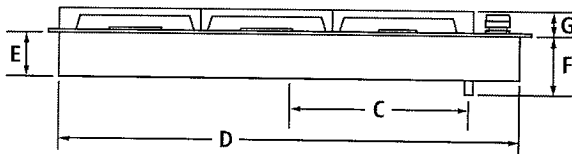
36" GAS COOKTOP

JGC7636B – 36" x 5¼" x 21"

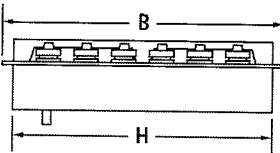
PRODUCT DIMENSIONS



TOP VIEW



FRONT VIEW



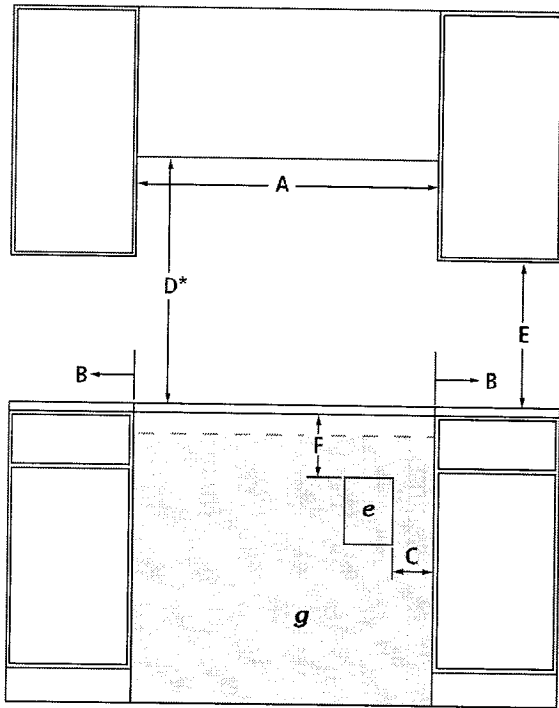
SIDE VIEW

MODEL #		JGC7636B	
		in	cm
A	Overall width	36	91.4
B	Depth of cooktop	21	53.3
C	Center of cooktop to center of gas inlet	13½	34.3
D	Width of recessed cooktop	35¼	89.5
E	Height of recessed cooktop	3¼	8.3
F	Height from gas inlet to countertop	5¼	13.3
G	Height with grates	1¼	3.2
H	Depth of recessed cooktop	20¼	51.4

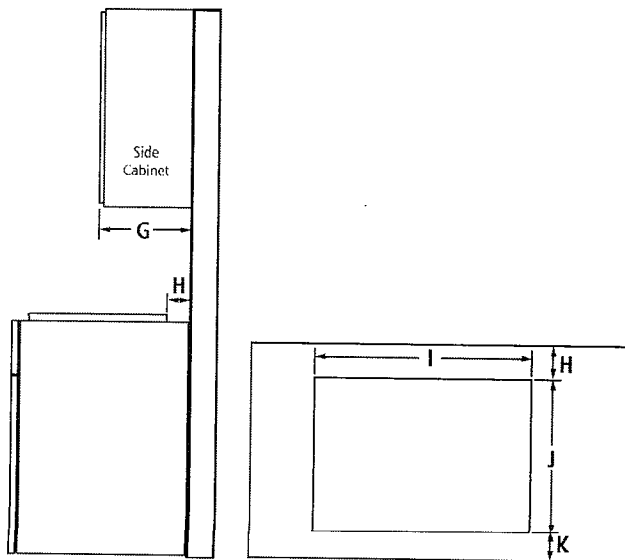
36" GAS COOKTOP

JGC7636B – 36" x 5¼" x 21"

OPENING/CLEARANCE DIMENSIONS



FRONT VIEW



SIDE VIEW

TOP VIEW – CUTOUT

MODEL #		JGC7636B	
		in	cm
A	Width of combustable area above cooking surface (min.)	36	91.4
B	Width from cooktop to fixed wall or other combustable material (min.)	6	15.2
C	Width to outer edge of outlet (max.)	24	61.0
D*	Height to bottom of uncovered wood or metal cabinet above cooking surface (min.)	30	76.2
E	Height to bottom of uncovered wood or metal cabinet (min.)	18	45.7
F	Height to top edge of outlet (min.)	5½	14.0
G	Depth of upper cabinet (recommended)	13	33.0
H	Depth from cutout to wall (min.)	2⅝	5.9
I	Width of cutout	35⅜	89.9
J	Depth of cutout	20⅝	51.8
K	Depth from cutout to front of countertop	2⅝	5.9
e	Recommended electrical access location		
g	Recommended gas supply line location		

*Dimension can be reduced by 6" (15.2 cm) when bottom of wood or metal cabinet is covered by not less than ¼" (0.6 cm) flame retardant millboard covered with not less than No. 28 MSG sheet metal, 0.015" (0.4 mm) stainless steel, 0.024" (0.6 mm) aluminum or 0.020" (0.5 mm) copper.

If installing a hood or microwave hood combination above the cooktop, follow the hood or microwave hood combination instructions for dimensional clearances above the cooking surface.

GAS REQUIREMENTS

Natural Gas

This cooktop is factory-set for use with natural gas.

LP Gas Conversion

Conversion must be done by a qualified service technician. To convert to LP gas, use the LP gas conversion kit provided with the cooktop.

ELECTRICAL REQUIREMENTS

120 volt, 60 Hz, AC only, 15-amp fused, electrical circuit is required. A time-delay fuse or dedicated circuit is recommended.

LOCATION REQUIREMENTS

- To ensure cooktop base clearance, cabinet side walls need to be wider than the cutout.
- If cabinet has a drawer, allow a 4" (10.2 cm) minimum clearance between countertop and top of drawer. Drawer depth may need to be shortened to avoid interfering with the regulator.

JENN-AIR® DETAILED PLANNING DIMENSIONS

SINGLE WALL OVEN AND COOKTOP COMBINATIONS

3 of 4

APPROVED MODEL NUMBER COMBINATIONS

SINGLE WALL OVENS

30-Inch: JJW3430W, JJW2430W, JJW2330W

27-Inch: JJW2427W, JJW2327W

INDUCTION COOKTOPS

36-Inch: JIC4536X

30-Inch: JIC4430X

GAS COOKTOPS

36-Inch: JGC7636B, JGC9536BD, JGC1536AD, JGC8536BD

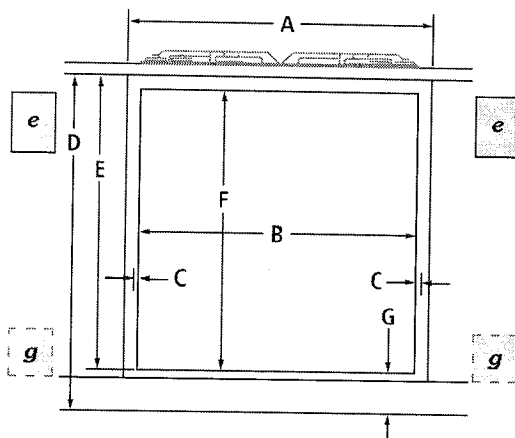
30-Inch: JGC7530B, JGC9430BD, JGC1430AD

ELECTRIC COOKTOPS

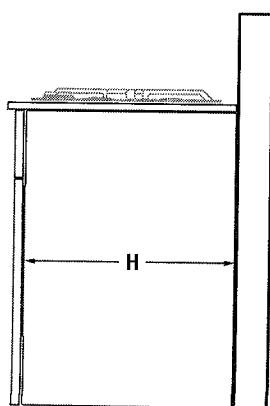
36-Inch: JEC4536B, JEC3536B

30-Inch: JEC4430B, JEC3430B

OPENING/CLEARANCE DIMENSIONS



**FRONT VIEW –
UNDER COUNTER INSTALLATION**
(with cooktop installed above)



**SIDE VIEW –
UNDER COUNTER INSTALLATION**
(with cooktop installed above)

MODEL #	JJW3430W JJW2430W JJW2330W		JJW2427W JJW2327W	
	in	cm	in	cm
A Width of cabinet (min.)	30	76.2	27	68.6
B Width of cutout (recommended)	28½	72.4	25½	64.8
C Oven trim overlap	⅝	1.6	⅝	1.6
D Bottom of countertop to floor	34½	87.6	34½	87.6
E	Bottom of countertop to bottom of cutout			
	Induction cooktop combination		30⅝	78.4
	Gas cooktop combination		29⅝	75.9
F	Height of cutout (recommended)		27¾	70.5
	Bottom of cutout to floor		27¾	70.5
G	Induction cooktop combination		3⅝	9.2
	Gas cooktop combination		4⅝	11.7
	Electric cooktop combination		4⅝	11.7
H Depth of cabinet (min.)	24	61.0	24	61.0
e	Recommended junction box location			
g	Recommended gas supply line location for gas cooktop			

NOTE: For under counter installation, the junction box should be located in the adjacent right or left cabinet. Drill a 1" (2.5 cm) minimum diameter hole in an upper corner of the side wall for access to the junction box.

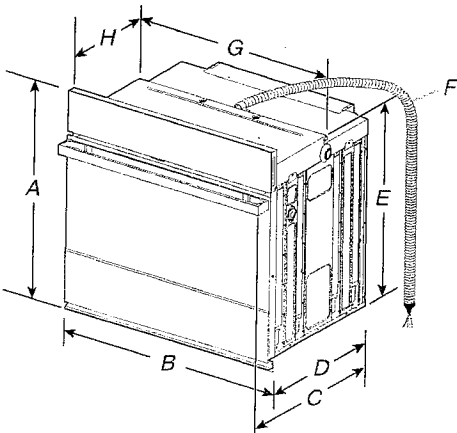
CABINET REQUIREMENTS

NOTE: When using under counter installation, check cabinet manufacturer's specifications to verify fit.

SINGLE WALL OVENS

JJW2427I – 27" x 29-7/8" x 25-5/16"

JJW2430I, JJW3430I – 30" x 29-7/8" x 25-5/16"



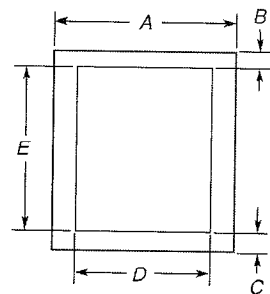
PRODUCT DIMENSIONS – SINGLE OVENS

~~27" (68.6 CM) MODELS~~

- A. 29-7/8" (75.8 cm) max. overall height
- B. 27" (68.6 cm) overall width
- C. JJW2427IM – 26-3/8" (67 cm)
JJW2427IL – 27-3/16" (69 cm)
- D. 23-1/4" (59.1 cm) max. recessed depth
- E. 27-3/16" (69 cm) recessed height
- F. 48" (121.9 cm) flexible conduit length
- G. 25-7/16" (64.6 cm) max. recessed width
- H. 12" (30.5 cm) from back of control panel to start of strain relief

~~30" (76.2 CM) MODELS~~

- A. 29-7/8" (75.8 cm) max. overall height
- B. 30" (76.2 cm) overall width
- C. JJW2430IM – 26-3/8" (67 cm)
JJW2430IL – 27-3/16" (69 cm)
JJW3430IM – 26-3/8" (67 cm)
JJW3430IL – 27-3/16" (69 cm)
- D. 23-1/4" (59.1 cm) max. recessed depth
- E. 27-3/16" (69 cm)
- F. 48" (121.9 cm) flexible conduit length
- G. 28-7/16" (72.2 cm) max. recessed width
- H. 12" (30.5 cm) from back of control panel to start of strain relief



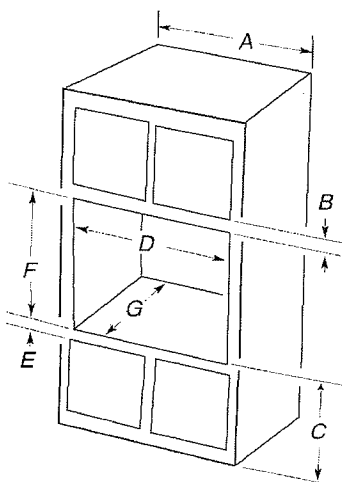
UNDERCOUNTER CABINET DIMENSIONS – SINGLE OVENS

~~27" (68.6 CM) MODELS~~

- A. 27" (68.6 cm) min. cabinet width
- B. 1-1/2" (3.8 cm) min. top of cutout to underside of countertop
- C. 5-1/4" (13.3 cm) bottom of cutout to floor
- D. 25-1/2" (64.8 cm) cutout width
- E. 28" (71.2 cm) min. cutout height

~~30" (76.2 CM) MODELS~~

- A. 30" (76.2 cm) min. cabinet width
- B. 1-1/2" (3.8 cm) min. top of cutout to underside of countertop
- C. 5-1/4" (13.3 cm) bottom of cutout to floor
- D. 28-1/2" (72.4 cm) cutout width
- E. 28" (71.2 cm) min. cutout height



SINGLE OVENS INSTALLED IN CABINET

~~27" (68.6 CM) MODELS~~

- A. 27" (68.6 cm) min. cabinet width
- B. 2-3/16" (5.5 cm) top of cutout to bottom of upper cabinet door
- C. 32" (81.3 cm) bottom of cutout to floor
- D. 25-1/2" (64.8 cm) cutout width
- E. 1-1/2" (3.8 cm) min. bottom of cutout to top of cabinet door
- F. 28" (71.2 cm)* recommended cutout height
- G. 24" (60.7 cm) cutout depth

*NOTE: The cutout height can be between 27-1/4" (69.2 cm) and 29-7/16" (74.8 cm) for 27" single ovens.

~~30" (76.2 CM) MODELS~~

- A. 30" (76.2 cm) min. cabinet width
- B. 2-3/16" (5.5 cm) top of cutout to bottom of upper cabinet door
- C. 32" (81.3 cm) bottom of cutout to floor
- D. 28-1/2" (72.4 cm) cutout width
- E. 1-1/2" (3.8 cm) min. bottom of cutout to top of cabinet door
- F. 28" (71.2 cm)* recommended cutout height
- G. 24" (60.7 cm) cutout depth

*NOTE: The cutout height can be between 27-1/4" (69.2 cm) and 29-7/16" (74.8 cm) for 30" single ovens.

IMPORTANT: Dimensional specifications are provided for planning purposes only.

Do not make any cutouts based on this information. Refer to the Installation or Use & Care Guide before selecting cabinetry, verifying electrical/gas connections, making cutouts or beginning installation. All JennAir® appliances are appropriately UL, CUL or CSA approved.

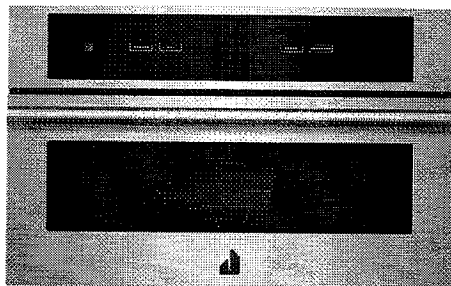




RISE™ 30" BUILT-IN MICROWAVE OVEN WITH SPEED-COOK

JMC2430IL

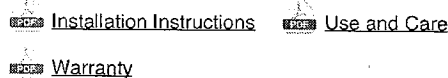
Let your appetite run wild with microwave and convection energy. With curated recipes and full-color doneness images, an intelligent culinary experience awaits your touch.



Available Finishes/Colours



Manuals & Literature:



Top Features

4.3-Inch Full Colour LCD Display

A highly interactive, full-colour LCD touchscreen is packed with dynamic features that allow you to navigate effortlessly through settings and cooking options including temperature and cooking mode.

Seamless Touches

Seamlessly designed. Concealed details melt into their stainless steel surround, as shiny interiors and glass expanses pull you in.

Stainless Steel Microwave Interior

Wrapped in luminous steel, intrinsic beauty is reflected in every corner.

Smooth Close Door

Quiet, soft, secure. Your oven gently pulls the door closed.

Dimensions

Depth	25 1/2
Height	19 7/8
Width	29 3/4

Configuration and Overview

Microwave Type	Built-In
Size (INches)	30

Compatibility

Connectivity	No
--------------	----

Exterior

Door Release	Handle
Door Opening	Drop Down
Handle Color	Stainless Steel

Controls

Control Type	Tap Touch
Control Location	Top

Controls

Scrolling Electronic Display	No
------------------------------	----

Number of Quick Touch/One-Touch Selections

1

Display Color	Full Color
---------------	------------

Electronic Display Type	LCD Screen
-------------------------	------------

Convenience Cooking Controls	Yes
------------------------------	-----

Misc.

Accessory Relationships	Yes
-------------------------	-----

Home Delivery	Yes
---------------	-----

Will Call	Yes
-----------	-----

Features

Number of Power Levels	10
------------------------	----

INSTALLATION REQUIREMENTS

Tools and Parts

Gather the required tools and parts before starting installation. Read and follow the instructions provided with any tools listed here.

Tools Needed

- Phillips screwdriver
- Flat-blade screwdriver
- Measuring tape
- Level
- Drill (for wall cabinet installations)
- 1/8" (3 mm) drill bit (for wall cabinet installations)
- 1" (2.5 cm) drill bit (for wall cabinet installations)

Parts Needed

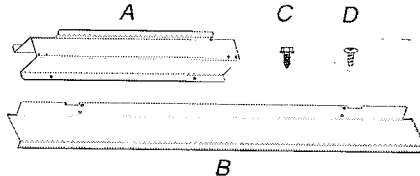
- UL listed or CSA approved conduit connector
- UL listed wire connectors

Parts Needed – Flush Installation

- W10801485 Stainless steel flush installation kit for 27" (68.6 cm) models
- W10801486 Stainless steel flush installation kit for 30" (76.2 cm) models
- W10801487 Black flush installation kit for 30" (76.2 cm) models

To order, see the "Assistance or Service" section of the Use and Care Guide.

Parts Supplied



- A. Spacer bars (2)
- B. Bottom vent (1)
- C. 3/8" (9.5 mm) hex-head washer screws (4)
- D. 3/4" (1.9 cm) pan-head screws (4)

Check local codes. Check existing electrical supply. See "Electrical Requirements."

It is recommended that all electrical connections be made by a licensed, qualified electrical installer.

Location Requirements

IMPORTANT: Observe all governing codes and ordinances.

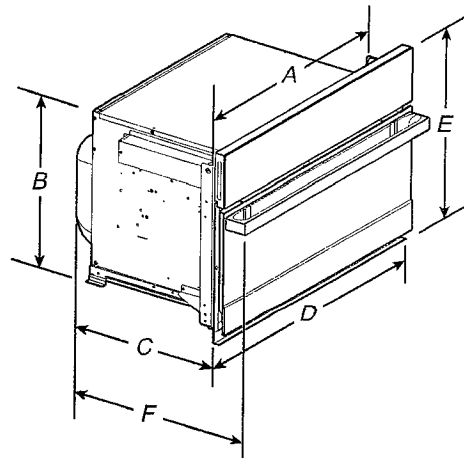
- Cabinet opening dimensions that are shown must be used. Given dimensions provide minimum clearance with microwave oven.
- Recessed installation area must provide complete enclosure around the recessed portion of the microwave oven.
- Grounded electrical supply is required. See "Electrical Requirements" section.
- Electrical supply junction box should be located 3" (7.6 cm) maximum below the support surface when the microwave oven is installed in a wall cabinet. A 1" (2.5 cm) minimum diameter hole should have been drilled in the left rear corner of the support surface to pass the appliance cable through to the junction box.

- For installation above single built-in oven, the junction box must located inside upper cabinet.
- If you are installing the junction box on rear wall behind the microwave oven, the junction box must be recessed and located in the upper or lower right or left corner of the cabinet; otherwise, the microwave oven will not fit into the cabinet opening.
- Microwave oven support surface must be solid, level, and flush with bottom of cabinet cutout. Floor must be able to support a weight of 108 lbs (49.0 kg).

IMPORTANT: To avoid damage to your cabinets, check with your builder or cabinet supplier to make sure that the materials used will not discolor, delaminate, or sustain other damage. This oven has been designed in accordance with the requirements of UL and CSA International and complies with the maximum allowable wood cabinet temperatures of 194°F (90°C).

Product Dimensions

27" (68.6 cm) and 30" (76.2 cm) Microwave Ovens



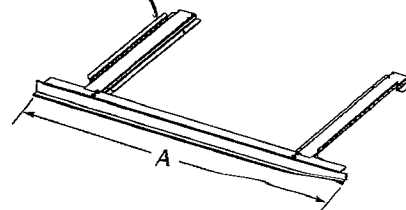
27" (68.6 cm) models

- A. 25³/₈" (64.5 cm)
- B. 17³/₈" (44.1 cm)
- C. 22¹/₁₆" (57.7 cm)
- D. 26³/₄" (68.0 cm) overall width
- E. 19⁷/₈" (50.3 cm) overall height
- F. JMC2427IM: 25³/₁₆" (64.9 cm)
- JMC2427IL: 24³/₄" (62.9 cm)

30" (76.2 cm) models

- A. 28³/₈" (72.1 cm)
- B. 17³/₈" (44.1 cm)
- C. 22¹/₁₆" (57.7 cm)
- D. 29³/₄" (75.6 cm) overall width
- E. 19⁷/₈" (50.3 cm) overall height
- F. JMC2430IM: 25³/₁₆" (64.9 cm)
- JMC2430IL: 24³/₄" (62.9 cm)

27" (68.6 cm) and 30" (76.2 cm) Microwave Oven Spacer Kit



27" (68.6 cm) models

- A. 26³/₄" (67.9 cm) overall width

30" (76.2 cm) models

- A. 29³/₄" (75.6 cm) overall width

NOTE: The microwave oven spacer kit will allow the microwave oven to be installed in a 17³/₈" to 17³/₄" (44.1 to 45.1 cm) maximum cutout height.

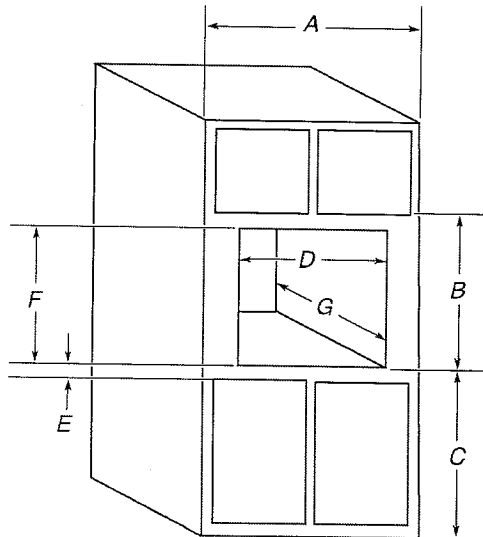
A microwave oven spacer kit is available from your dealer that will allow the microwave oven to be installed in a 19" to 19¹³/₁₆" (48.3 to 50.2 cm) maximum cutout height. Match the oven size to the following kits:

- 27" (68.6 cm) Stainless Steel – Model W10469901
- 30" (76.2 cm) Stainless Steel – Model W10469903

To order, see the "Assistance or Service" section of the Use and Care Guide.

Cabinet Dimensions

27" (68.6 cm) and 30" (76.2 cm) Microwave Ovens



27" (68.6 cm) models

- A. 27" (68.6 cm) min. cabinet width
- B. 19¹³/₁₆" (50.3 cm) from bottom of cutout to bottom of upper cabinet door
- C. 40" (101.6 cm) bottom of cutout to floor (recommended)
- D. 25¹/₂" (64.3 cm) cutout width
- E. 1¹/₂" (3.8 cm) min. bottom of cutout to top of cabinet door
- F. 17⁵/₈" (44.7 cm) recommended cutout height (will fit cutout height from 17³/₈" [44.1 cm] to 17⁷/₈" [45.1 cm])
- G. 21⁷/₈" (55.5 cm) min. cutout depth

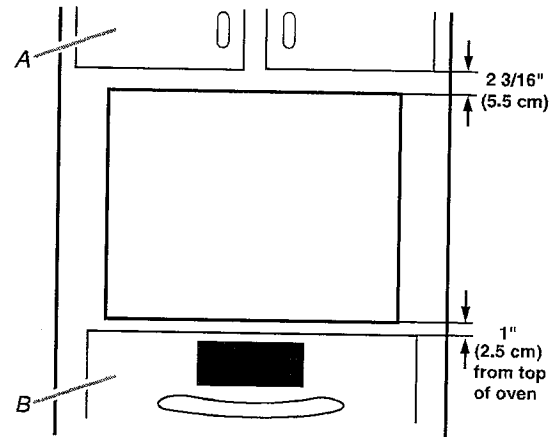
30" (76.2 cm) models

- A. 30" (76.2 cm) min. cabinet width
- B. 19⁷/₈" (50.3 cm) from bottom of cutout to bottom of upper cabinet door
- C. 40" (101.6 cm) bottom of cutout to floor (recommended)
- D. 28¹/₂" (72.4 cm) cutout width
- E. 1¹/₂" (3.8 cm) min. bottom of cutout to top of cabinet door
- F. 17⁵/₈" (44.7 cm) recommended cutout height (will fit cutout height from 17³/₈" [44.1 cm] to 17⁷/₈" [45.1 cm])
- G. 21⁷/₈" (55.5 cm) min. cutout depth

Minimum Installation Clearances

For proper installation, the following minimum clearances must exist above and below the cabinet opening.

Installation Above Single Built-In Oven



A. Upper cabinet
B. Lower single oven

Electrical Requirements

GROUNDING INSTRUCTIONS

For a permanently connected microwave oven:

The microwave oven must be connected to a grounded, metallic, permanent wiring system, or an equipment grounding conductor should be run with the circuit conductors and connected to the equipment grounding terminal or lead on the microwave oven.

SAVE THESE INSTRUCTIONS

If codes permit and a separate ground wire is used, it is recommended that a qualified electrical installer determine that the ground path and wire gauge are in accordance with local codes.

Check with a qualified electrical installer if you are not sure the oven is properly grounded.

This oven must be connected to a grounded metal, permanent wiring system.

Be sure that the electrical connection and wire size are adequate and in conformance with the National Electrical Code, ANSI/NFPA 70 – latest edition or CSA Standards C22.1-94, Canadian Electrical Code, Part 1 and C22.2 No. 0-M91 – latest edition, and all local codes and ordinances.

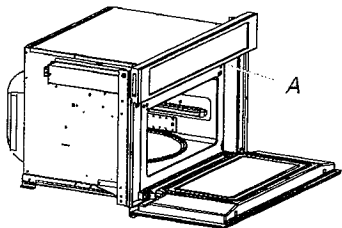
A copy of the above code standards can be obtained from:

National Fire Protection Association
1 Batterymarch Park
Quincy, MA 02169-7471
CSA International
8501 East Pleasant Valley Road
Cleveland, OH 44131-5575

Electrical Connection

To properly install your microwave oven, you must determine the type of electrical connection you will be using and follow the instructions provided for it here.

- Microwave oven must be connected to the proper electrical voltage and frequency as specified on the model/serial/rating plate. The model/serial/rating plate is located underneath the control panel along the oven vent.



A. Model/serial/rating plate

- The microwave oven rated 120/240 V, 20 A, has 4 wires (L1, L2, N, and G) in the flex conduit, and should be connected to a 20 A maximum-rated circuit, overcurrent protected on both the L1 and L2 circuits.
- A time-delay fuse or circuit breaker is recommended.
- Flexible cable from the microwave oven should be connected directly to the junction box.

- Do not cut the conduit. The length of conduit provided is for serviceability of the microwave oven.
- A UL listed or CSA approved conduit connector must be provided.
- If the house has aluminum wiring, follow the procedure below:

Connect the aluminum wiring using special connectors and/or tools designed and UL listed for joining copper to aluminum.

Follow the electrical connector manufacturer's recommended procedure. Aluminum/copper connection must conform with local codes and industry accepted wiring practices.

For power requirements, refer to the following table:

Voltage	Microwave With Convection Oven
120/240 VAC	15 A
120/208 VAC	15 A

INSTALLATION INSTRUCTIONS

Spacer Kit Installation

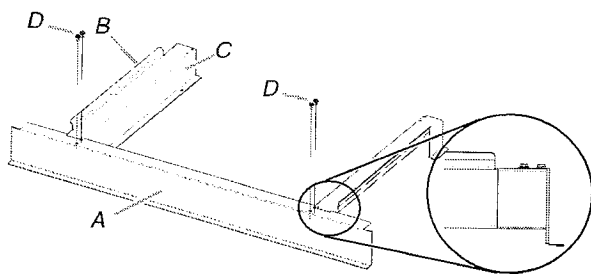
NOTES:

- The microwave oven spacer kit allows the microwave oven to be installed in an 17⁷/₁₆" to 17⁷/₈" (44.1 cm to 45.3 cm) maximum cutout height.
- If your cabinet cutout height is more than 17⁷/₁₆" (44.1 cm), you must install the spacer kit. Proceed to "Assemble Spacer Kit."
- If your cabinet cutout height is less than 17⁷/₁₆" (44.1 cm), you do not have to install the spacer kit. Proceed to "Prepare Built-In Microwave Oven."

Assemble Spacer Kit

1. Attach the bottom vent to spacer bars using four 3/8" (9.5 mm) hex-head washer screws.

NOTE: Spacer bar flanges should be facing out.

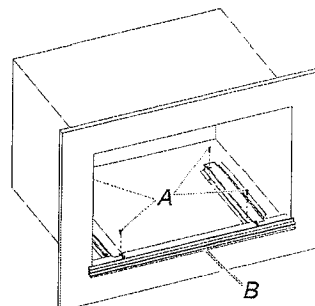


A. Bottom vent
B. Spacer bar flange
C. Spacer bars
D. 3/8" (9.5 mm) hex-head washer screws

Install Spacer Kit

1. Center assembled microwave oven spacer kit against lower front edge of the cabinet cutout.
2. Using an 1/8" (3.2 mm) drill bit, drill through the mounting holes in the spacer bars to create pilot holes.

3. Attach the assembled spacer kit to the cabinet using four 3/4" (1.9 cm) (flat-head screws. Do not overtighten screws.



A. 3/4" (1.9 cm) flat-head screws
B. Spacer kit assembly

Prepare Built-In Microwave Oven

1. Locate existing wiring to avoid drilling into or severing wiring during installation.

⚠ WARNING

Excessive Weight Hazard

Use two or more people to move and install microwave oven.

Failure to do so can result in back or other injury.

2. To avoid floor damage, set the microwave oven onto cardboard prior to installation. Do not use handle or any portion of the front frame for lifting.
3. Remove the shipping materials and tape from the microwave oven.
4. Remove and set aside racks and other items from inside the microwave oven.
5. Remove the hardware package from inside the bag containing literature.
6. Move the microwave oven and cardboard close to the microwave oven's final location.

SINGLE WALL OVENS

JJW2427I – 27" x 29-7/8" x 25-5/16"

JJW2430I, JJW3430I – 30" x 29-7/8" x 25-5/16"

ELECTRICAL REQUIREMENTS

If codes permit and a separate ground wire is used, it is recommended that a qualified electrical installer determine that the ground path and the wire gauge are in accordance with local codes.

Check with a qualified electrical installer if you are not sure the oven is properly grounded.

This oven must be connected to a grounded metal, permanent wiring system.

Be sure that the electrical connection and wire size are adequate and in conformance with the National Electrical Code, ANSI/NFPA 70-latest edition or CSA Standards C22.1-94, Canadian Electrical Code, Part 1 and C22.2 No. 0-M91-latest edition, and all local codes and ordinances.

A copy of the above code standards can be obtained from:

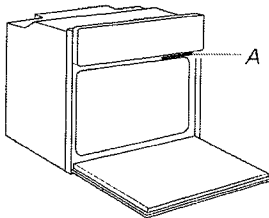
National Fire Protection Association
1 Batterymarch Park
Quincy, MA 02169-7471

CSA International
8501 East Pleasant Valley Road
Cleveland, OH 44131-5575

ELECTRICAL CONNECTION

To properly install your oven, you must determine the type of electrical connection you will be using and follow the instructions provided for it here.

- Oven must be connected to the proper electrical voltage and frequency as specified on the model/serial/rating plate. The model/serial/rating plate is located under the control panel on single ovens. See the following illustration



A. Model/Serial/Rating Plate

- Models rated from 7.3 to 9.6 kW at 240 V (5.4 to 7.4 kW at 208 V) require a separate 40 A circuit. Models rated at 4.8 kW and below at 240 V (3.6 kW and below at 208 V) require a separate 20 A circuit.
- A circuit breaker is recommended.
- Connect directly to the circuit breaker box (or fused disconnect) through flexible, armored, or nonmetallic sheathed, copper cable (with grounding wire).
- Flexible conduit from the oven should be connected directly to the junction box.
- Fuse both sides of the line.
- Do not cut the conduit. The length of conduit provided is for serviceability of the oven.
- A UL listed or CSA approved conduit connector must be provided.
- If the house has aluminum wiring, follow the procedure below: Connect the aluminum wiring using special connectors and/or tools designed and UL listed for joining copper to aluminum. Follow the electrical connector manufacturer's recommended procedure. Aluminum/copper connection must conform with local codes and industry accepted wiring practices.

For power requirements for models JJW2427I, JJW2430I and JJW3430I, refer to the following table.

	240 VAC	208 VAC
Model	kW	kW
JJW2427I	4.1	3.1
JJW2430I	4.1	3.1
JJW3430I	4.5	3.4

IMPORTANT: Dimensional specifications are provided for planning purposes only.

Do not make any cutouts based on this information. Refer to the Installation or Use & Care Guide before selecting cabinetry, verifying electrical/gas connections, making cutouts or beginning installation. All JennAir® appliances are appropriately UL, CUL or CSA approved.



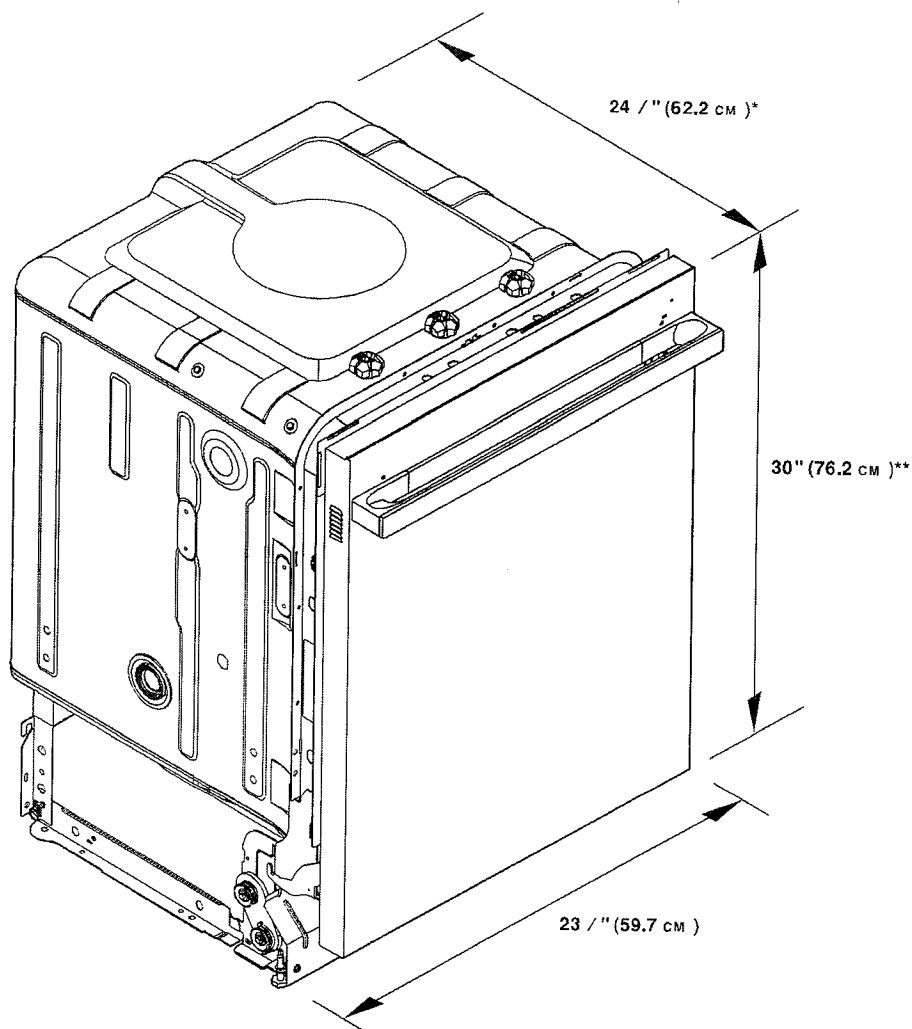


24" DISHWASHER

DETAILED PLANNING DIMENSIONS GUIDE

JD TSS246G, JD TSS244G, JD TSS245G, JD TSS243G, JD TSS247HS
23" (W) x 33" (H) x 24" (Depth without door panel/handles)

PRODUCT DIMENSIONS



*For custom panel models, this value may change.

**With wheels removed. Add up to 1" (2.5 cm) to height with wheels and leg levelers fully extended.

Because Whirlpool Corporation policy includes a continuous commitment to improve our products, we reserve the right to change materials and specifications without notice.

Dimensions are for planning purposes only. For complete details, see Installation Instructions packed with product. Specifications subject to change without notice.

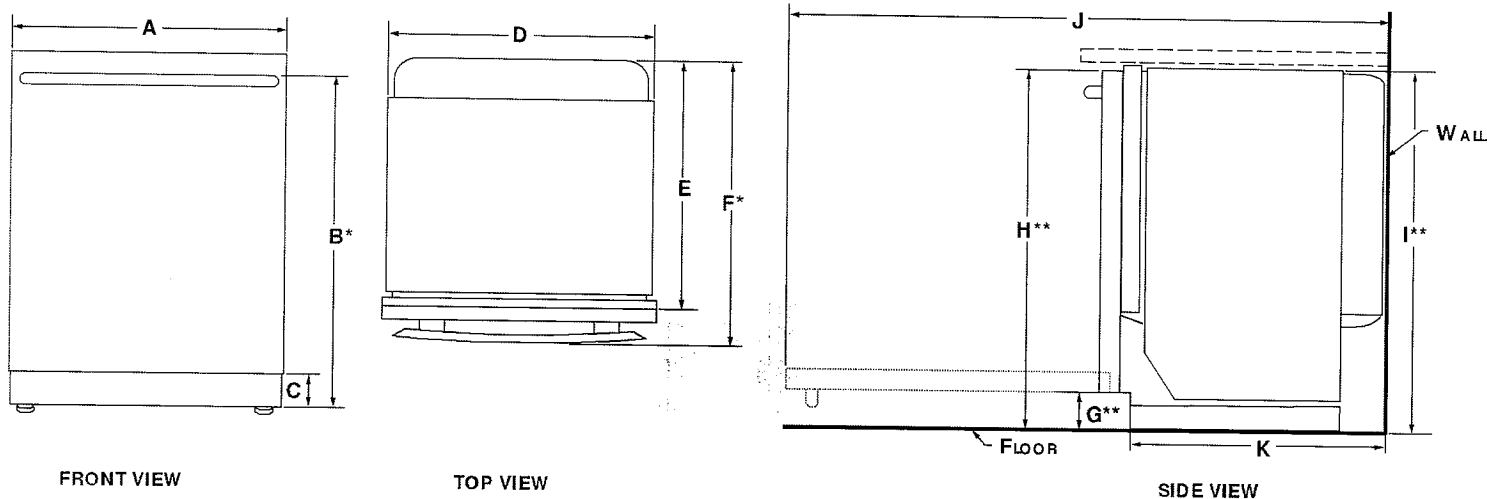


24" DISHWASHER

DETAILED PLANNING DIMENSIONS GUIDE

JD TSS246G, JD TSS244G, JD TSS245G, JD TSS243G, JD TSS247HS
23 /" (W) x 33 /" (H) x 24" (Depth without door panel/handles)

PRODUCT DIMENSIONS CONTD.



	DESCRIPTION	JD TSS246G, JD TSS244G	JD TSS245G, JD TSS243G	JD TSS247HS
A	Width of door	23 /" (60.6 cm)	23 /" (60.6 cm)	23 /" (60.6 cm)
B*	Height to top of handle	31 /" (80.1cm)	-	-
C	Height of adjustable toe kick	3 /" (8.8 cm) - min. 4 /" (10.6 cm) - max.	3 /" (8.8 cm) - min. 4 /" (10.6 cm) - max.	3 /" (8.8 cm) - min. 4 /" (10.6 cm) - max.
D	Width of recessed dishwasher	23 /" (60.6 cm)	23 /" (60.6 cm)	23 /" (60.6 cm)
E*	Depth without handle	22 /" (57.4 cm)	22 /" (57.4 cm)	22 /" (57.4 cm)
F*	Depth with handle			
	Pro-Style® Stainless	29 /" (73.9 cm)	-	-
	Euro-Style Stainless	28 /" (72.6 cm)	-	-
	RISE™ Stainless	28 /" (72.7 cm)	-	-
	NOIR™ Stainless	28 /" (72.6 cm)	-	-
G**	Height to bottom of door	3 /" (9.4 cm)	3 /" (9.4 cm)	3 /" (9.4 cm)
H**	Height to top of door (min.)	33 /" (85.7 cm)	33 /" (85.7 cm)	33 /" (85.1 cm)
I**	Height of recessed dishwasher (min.)	33 /" (85.5 cm)	33 /" (85.5 cm)	-
J	Depth with door fully open (min.)	49 /" (125.7 cm)	49 /" (125.7 cm)	-
K	Depth with toe kick (min.)	20 /" (52.9 cm)	20 /" (52.9 cm)	21" (533 mm)

Because Whirlpool Corporation policy includes a continuous commitment to improve our products, we reserve the right to change materials and specifications without notice.

Dimensions are for planning purposes only. For complete details, see Installation Instructions packed with product. Specifications subject to change without notice.

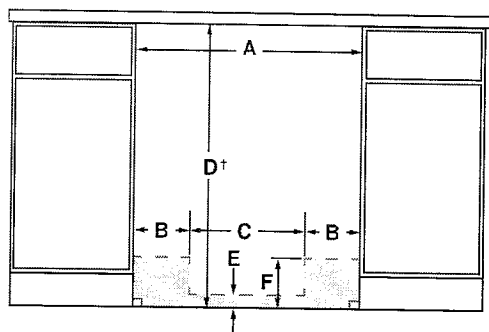


24" DISHWASHER

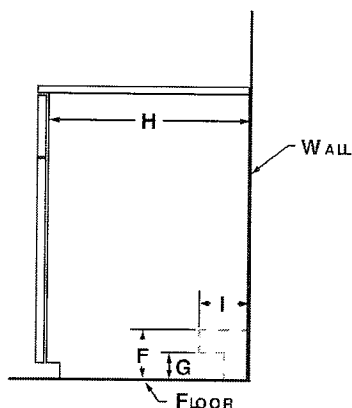
DETAILED PLANNING DIMENSIONS GUIDE

JD TSS246G, JD TSS244G, JD TSS245G, JD TSS243G, JD TSS247HS
23 / " (W) x 33 / " (H) x 24" (Depth without door panel/handles)

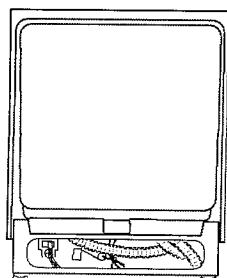
OPENING CLEARANCE DIMENSIONS



FRONT VIEW



SIDE VIEW



BACK VIEW

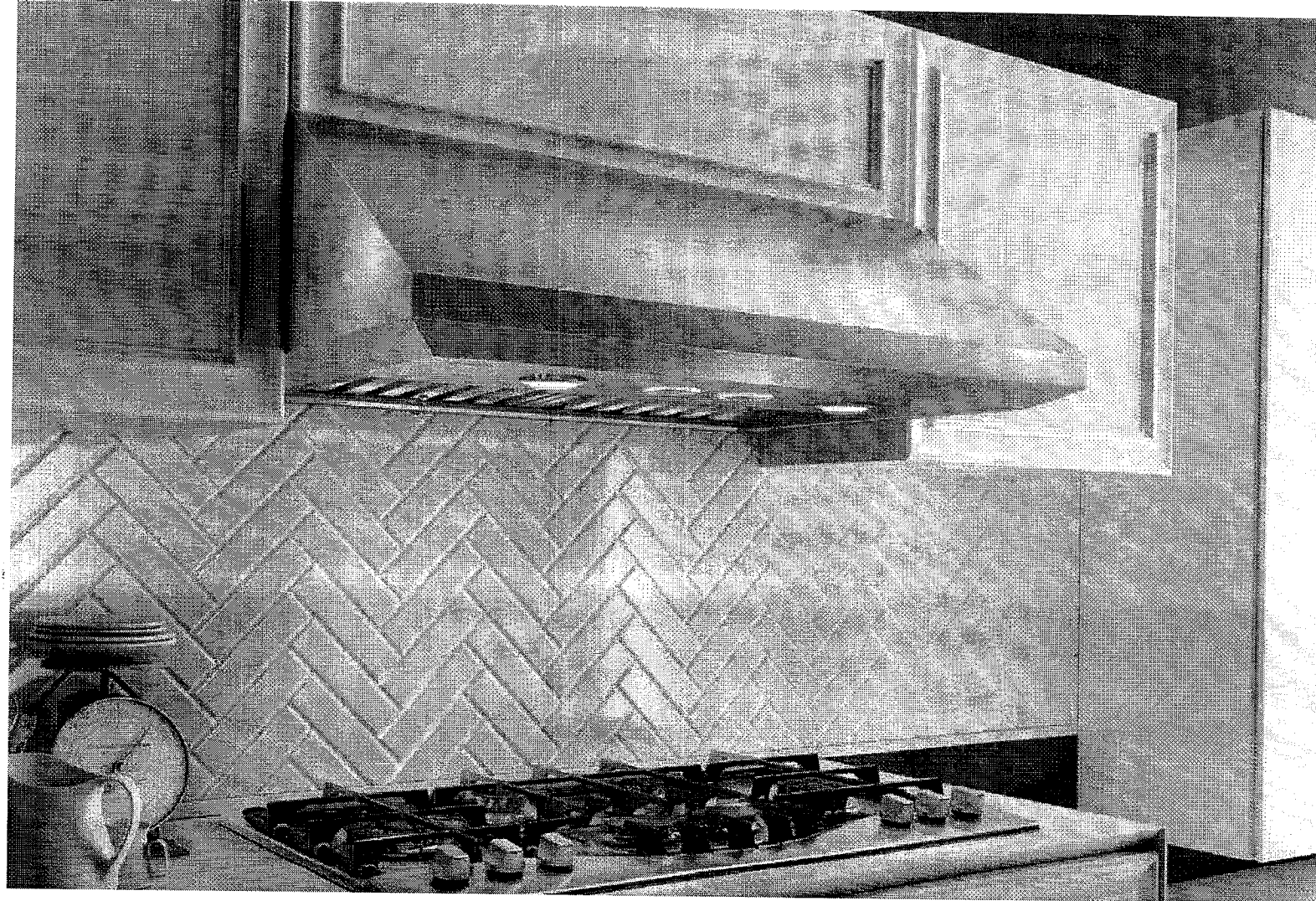
	DESCRIPTION	JD TSS246G, JD TSS244G, JD TSS245G, JD TSS243G, JD TSS247HS
A	Width (min.)	24" (61cm)
B	Width of possible utility installation area (back wall)	6 / " (17.2 cm)
C	Width of clear area (back wall)	10 / " (26.7 cm)
D†	Height with wheels removed (min.)	34" (86.4 cm)
E	Height of possible utility installation area (back wall)	2 / " (6.4 cm)
F	Height of possible utility installation area (back/side wall)	6 / " (15.9 cm)
G	Height of clear area (side wall)	3" (7.6 cm)
H	Depth (min.)	24" (61cm)
I	Depth of utility location (side wall)	4" (10.2 cm)
Recommended drain connection location – closest to sink		1 / " (3.8 cm) dia.
Recommended electrical connection location – right-hand side or back wall		1 / " (3.8 cm) dia.
Recommended water connection location – left-hand side or back wall		1/2" (1.3 cm) dia.

†Measured from the lowest point on the underside of countertop.

NOTE: Shaded areas indicate recommended locations of electrical, water and drain connections.

LOCATION REQUIREMENTS

Corner locations require a 2" (5.1 cm) minimum clearance between the side of the dishwasher door and the wall or cabinet.



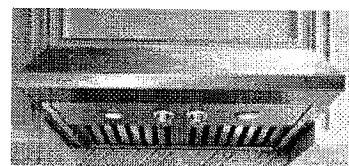
CERVINIA UNDER-CABINET

ELICA PRO SERIES

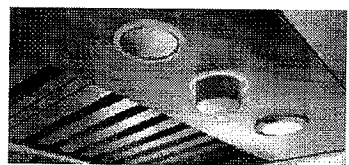
Dimensions | Models

~~30" W x 23" D x 10" H | ECV630S3~~
CERVINIA 30"

36" W x 23" D x 10" H | ECV636S3
CERVINIA 36"



LED light



IN/OUT Backlit Knob

Available in 30" and 36" widths and only 10" high, the Cervinia is a streamlined version of the full-size Calabria model. This hood features professional styling, seamless welded corner craftsmanship, a powerful 600 CFM blower with high airflow, heavy duty stainless steel baffle grease filters, halogen lighting, plus backlit hidden metallic in/out knobs for convenience and safety. Cervinia also delivers higher efficiency and easy maintenance for a cleaner kitchen.



Elica Design Center

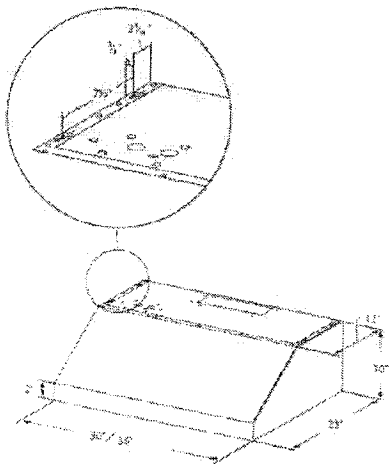


elica
LIFE IN THE KITCHEN

FEATURES

Size (in) & Type	36" wide Under-cabinet Chimney
Finish	Stainless Steel
Controls	IN/OUT Backlit Knob
Illumination	2 LED 7.5 watts LED light, replaceable lamps (1 intensity)
Installation Type	Ducted Installation Only
Blower Type	Speed 1, 170 CFMs Speed 2, 280 CFMs Speed 3, 440 CFMs Speed 4, 600 CFMs
Filter Type	2, Dishwasher-Safe, Professional Stainless Steel, Angled Baffle Filters
Noise (sones):	Min: 2.34, Max: 7 Sones
Duct Transition	Rectangular 3" x 1/4" x 10" (Top and rear)
Electrical	120 Volts, 60 Hertz

Line Drawing



PLUS

**HUSH SYSTEM**

An exclusive sound deadening technology that effectively reduces sound levels by over 35%, compared to typical range hoods.

**LED LIGHT**

LED lighting is undoubtedly the smartest solution in terms of energy saving. Expected life time of over 20.000 hours, represents the most remarkable advantage of LED light bulbs.

**PROFESSIONAL PERFORMANCE**

Special features and very high performances for models with aspiration capacity between 600 and 1200 CFM's, and noise level between 65 and 75 db(A) at maximum speed. The ideal complement of PRO ranges.

**HEAT GUARD**

A safety feature that protects the hood and cabinetry from excessive heat, by sensing extreme temperatures (>158 degrees) and will automatically adjust the blower speed to HIGH. Blower speed will automatically adjust back once temperatures drop to a safe level.

**LED CONSUMER REPLACEABLE BULB**

High quality LED lighting usually requires a skilled technician to replace lamps. Avoid this expense with Elica's new LED lamps that enable typical homeowners to replace in seconds.

**GREASE**

Accessories

6" Chimney Kit

CODE: KITO2159 / (30")

CODE: KITO2158 / (36")

**12" Chimney Kit**

CODE: KITO2160 / (30")

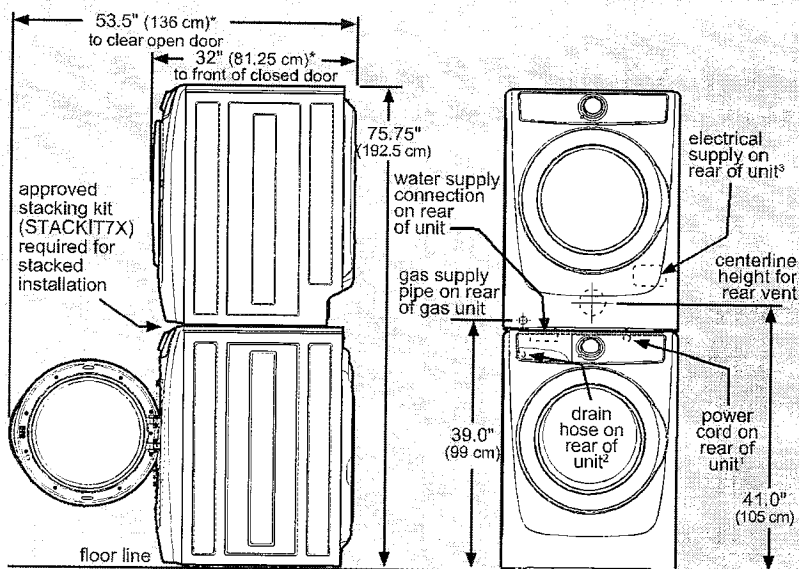
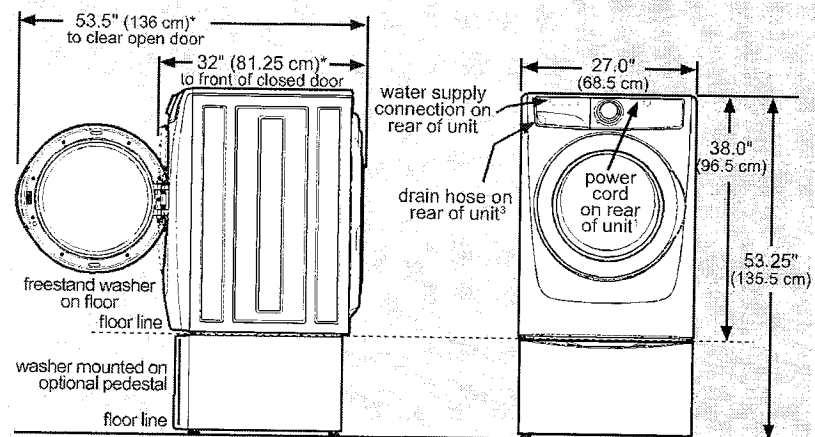
CODE: KITO2161 / (36")

**Backsplash Kit**

CODE: KITO2162 / (30")

CODE: KITO2163 / (36")

Washer dimensions



Connection of water inlet hose on steam dryer adds 3/4 in. (2 cm) to installation depth.

¹Power supply cord length on washer approximately 60 inches (152.5 cm).

²Drain hose length on washer approximately 59 inches (150 cm).

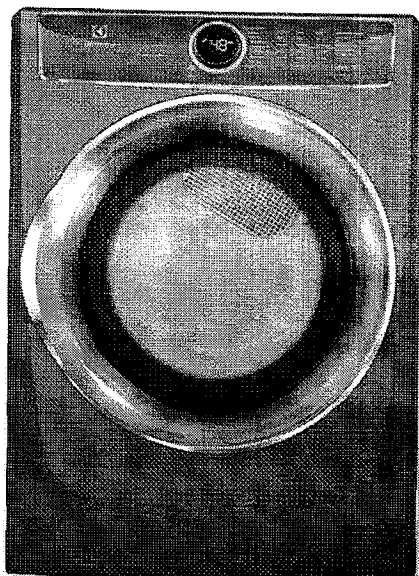
³Power supply cord length on gas dryer or electric Canadian dryer approximately 60 inches (152.5 cm).

ELECTRIC FRONT LOAD DRYER

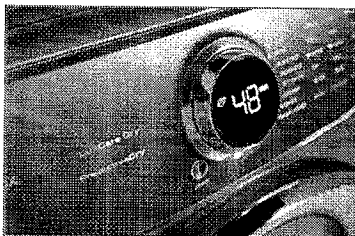
8.0 Cu. Ft.

EFMC627U TT/IW

Perfect Steam™ Dryer with Instant Refresh™ and IQ-Touch™ Controls

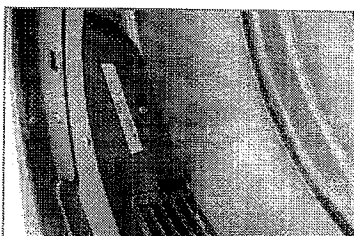


SIGNATURE FEATURES



PREDICTIVE DRY™ MORE ACCURATELY PREDICTS DRY TIMES

Knows after 90 seconds a more accurate time your clothes will be dried to perfection so you don't have to keep checking on your load.



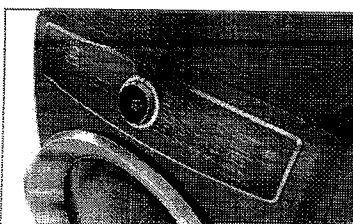
HELP PREVENT OVER- OR UNDER-DRYING WITH LUXCARE® DRY SYSTEM

A more precise sensor for a better dry to protect your clothes from over-drying, but also to help make sure you don't have wet clothes left in the load.



INSTANT REFRESH™ CYCLE REVIVES FABRICS

Remove wrinkles and quickly refresh items with steam in 10 minutes.



15-MINUTE FAST DRY™

Quickly dry the items you need most.

PRODUCT DIMENSIONS

Height	38"
Width	27"
Depth	31-1/2"

MORE EASY-TO-USE FEATURES

ENERGY STAR®-CERTIFIED

Rigorously tested to do more with less. Electrolux dryers meet strict criteria to guarantee high-quality energy efficient performance.

PERFECT STEAM™ WRINKLE RELEASE OPTION

Gently releases wrinkles and reduces static to keep clothes looking their best.

EXTENDED TUMBLE OPTION KEEPS CLOTHES TANGLE-FREE

Gently tumbles your clothes without heat to keep them tangle-free — perfect for when you cannot remove clothes right after the cycle ends.

LUXCARE® LINT SHIELD HELPS AVOID MASSES

Traps lint so it doesn't make a mess, even if you empty it while there are clothes in the dryer.

ACTIVWEAR CYCLE

Takes care of delicate and expensive activewear garments.

EXTRA-LARGE CAPACITY DRYER

Dry more in each load with our 8.0 cu. ft. dryers.

PLATINUM STAR® LIMITED WARRANTY

Our exclusive limited warranty that includes three-year coverage on parts and one year on labour.*

9 CYCLES TO CARE FOR EVERY FABRIC

Perfectly dry every item with tailored cycles for towels, allergen, delicates, and more.

FITS MORE ROOMS WITH REVERSIBLE DOOR

Enjoy easy loading no matter how your washer and dryer are configured.

OPTIONAL PEDESTALS AND STACKING KIT FOR MORE INSTALLATION OPTIONS

Raise your units with optional pedestal drawers that provide extra storage. Or use the optional stacking kit for convenient placement in small spaces.

Available in:

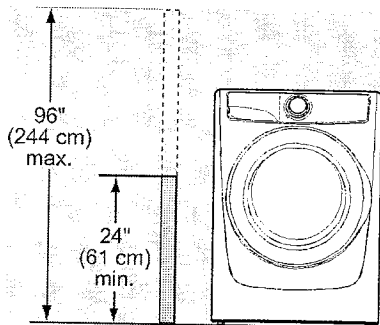


Titanium
(TT)

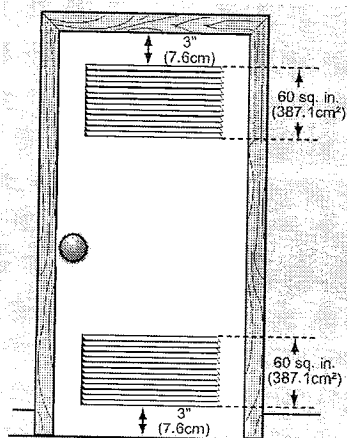


Island White
(IW)

*Fastest time based on smallest load. Fast Dry is selected for various load compositions.
*Slightly based on product registration with Electrolux North America within 60 days of purchase. Products must have been purchased on or after July 1, 2013. See online warranty for details. Limited time offer.

**NOTE**

Drain hose length is 59 in. (150 cm). For installations requiring a longer drain hose, use hose P/N 137098000, available from an authorized parts distributor.



closet door

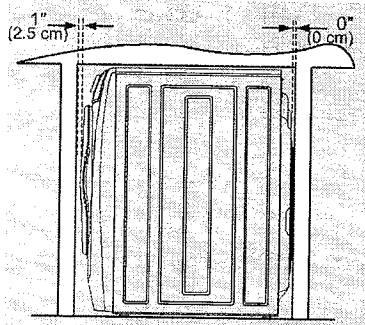
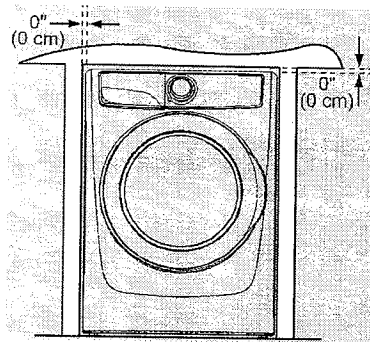
MINIMUM INSTALLATION CLEARANCES - Inches (cm)				
	SIDES	REAR	TOP	FRONT
Alcove	0" (0 cm)	0" (0 cm)	0" (0 cm)	n/a
Under-Counter	0" (0 cm)	0" (0 cm)	0" (0 cm)	n/a
Closet	0" (0 cm)	0" (0 cm)	0" (0 cm)	1" (2.5 cm)

Clearance requirements**IMPORTANT****DO NOT INSTALL YOUR WASHER:**

1. In an area exposed to dripping water or outside weather conditions.
2. In an area where gasoline or other flammables are kept or stored. If the washer is installed in a garage, it must be a minimum of 18 inches (45.7 cm) above the floor.
3. On carpet. Floor **MUST** be solid with a maximum slope of 1 inch (2.5 cm). To minimize vibration or movement, reinforcement of the floor may be necessary.

Installation in a recess or closet

If washer and dryer are installed in the same closet, door ventilation is required: A minimum of 120 square inches (774.2 cm²) of opening, equally divided at the top and bottom of the door, is required. Louvered openings should be located 3 inches (7.6 cm) from bottom and top of door. Air openings are required to be unobstructed when a door is installed. A louvered door with equivalent air openings for the full length of the door is acceptable.



ELECTRIC FRONT LOAD DRYER

EFMC627U TT/IW



27" ELECTRIC FRONT LOAD DRYER

Capacity D.O.E.	8.0 Cu. Ft.
-----------------	-------------

FEATURES

Pull-to-Open Door	Yes
10-Touch™ Controls	Yes
Perfect Steam™ Dry System	Yes
Dry System	Predictive Dry™
Sound System	Luxury-Quiet™
Lighting	Luxury-Design® LED
Tumble System	Gentle Tumble™
Moisture Sensor	Yes
Dryer Drum	Stainless Steel
Tumble Speed (RPM)	60
Reversible Door	Yes
Adjustable Leveling Legs	Yes
ENERGY STAR®	Yes

CYCLES

Timed Dry (30, 45, 60, 75), Allergen, Heavy Duty/Towels, Normal, 15-Min. Fast Dry, Activewear, Mixed Load, Delicates, Instant Refresh™	9
--	---

OPTIONS

Temperature Selections	5
Add Steam	Yes
Electronic Auto Dry System	Yes
Manual Timed Dry Selections	4
Delay Start (Hours)	12
End-of-Cycle Chime	On/Off
Extended Tumble	Yes
Anti-Static	Yes
Line Dry	Yes
Dryness Levels	5

INSTALLATION OPTIONS

Freestanding, Under Counter*, Stacked (Above Washer), Pedestal, Hidden in Closet, Second Floor	Yes
4-Way Dryer Venting	Yes

ACCESSORIES

Luxury-Glide™ Pedestal with Spacious Storage Drawer—Titanium — PN# EPWD257UT1	Optional
Island White — PN# EPWD257UW	Optional
Dryer Stacking Kit — PN# STAGN77X	Optional
Drying Rack — PN# AD484U701	Optional
Assembly Hose Kit — PN# 5304495002	Optional

SPECIFICATIONS

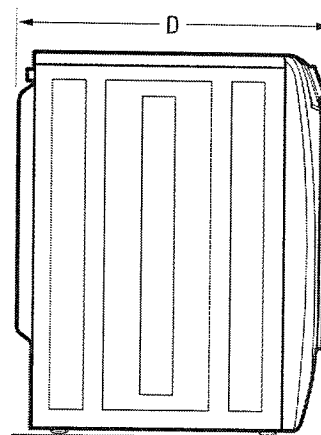
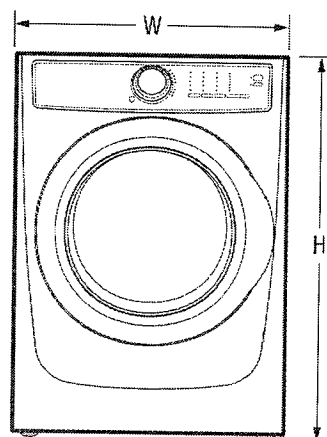
Colour —	
Titanium	TT
Island White	IW
Maximum Exhaust Duct Length* (ft.)	125
Power Supply Connection Location	Rear
Voltage Rating	240V/60Hz/30A
Connected Load (kW Rating) @ 240 Volts	6.0
Amps @ 240 Volts	25
Heating Element @ 240 Volts (Watts)	5,400
Shipping Weight (Approx.)	140 Lbs.

*Slide-In Side note in order master installation requires cabinet, both countertop and of country.

**Rigid ducts are preferred, semi-rigid acceptable and allow deductions for elbows and vents. Refer to installation code or web for additional information.

NOTE: Always consult local and national electric and plumbing codes. Refer to Product Installation Guide for detailed installation instructions for the use of electrical appliances.

Specifications subject to change.



PRODUCT DIMENSIONS

Height (without 18" Pedestal)	38"
(with 13" Pedestal)	53-1/4"
Width	27"
Depth (to Centre of Arc Not Including Hose)	31-1/2"
(with Door 90° Open)	50-5/8"

Electrolux Major Appliances, N.A.

CANADA • 5855 Terry Fox Way • Mississauga, ON L5V 3E4 • 1-800-265-8352 • electroluxappliances.ca

EFMC627U 05/18

© 2018 Electrolux Major Appliances, N.A.

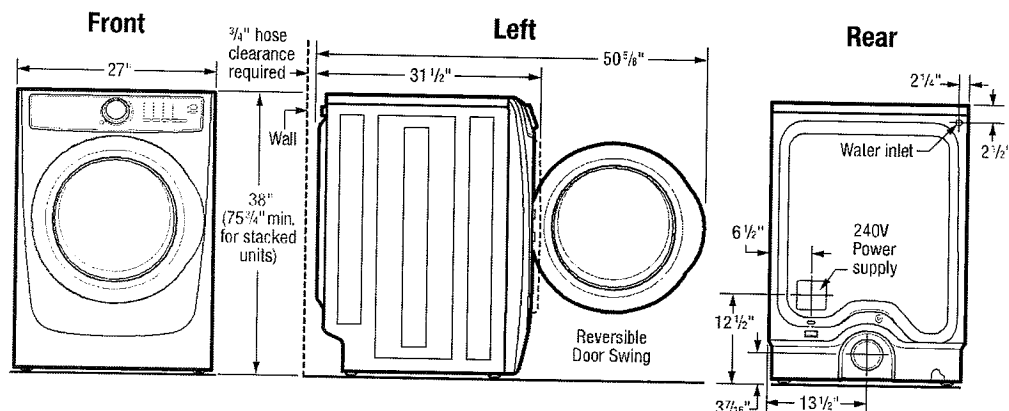


High standards of quality at Electrolux Home Products, Inc. mean we are constantly working to improve our products. We reserve the right to change specifications or discontinue models without notice.

Printed in Canada

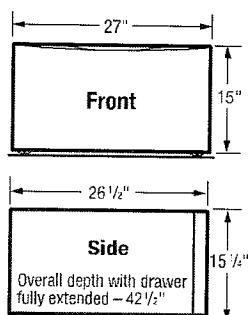
ELECTRIC FRONT LOAD DRYER

EFMC627U TT/IW

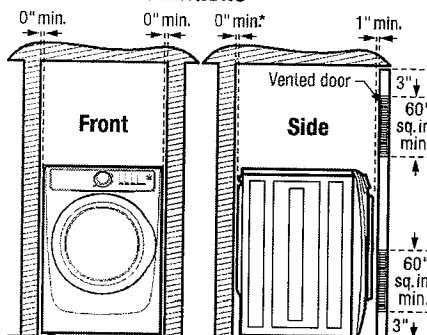


15" Pedestal Drawer Installation

Elevates dryer height to 53 1/4". For detailed pedestal installation, refer to instructions included with pedestal or on web. Pedestal installation may require modified utility hookup locations. For details, refer to Product Installation Guide on web.



Built-In Installations



*Steam dryer requires additional 3/4" hose clearance.

Closet Installation:

If washer and dryer are installed in same closet, door(s) MUST be vented with 120 sq. in. minimum louvered opening, equally divided, located 3" from top and bottom of door. Louvered door(s) with equivalent air openings for full-length of door is acceptable. Air openings MUST remain unobstructed with door(s) installed.

Installation Clearances:

Dryer can be built in alone or with washer (side by side or stacked) in closet, recess or under counter installation with 0" minimum clearance required around sides and back of unit(s). To achieve 0" minimum rear clearance, dryer MUST be vented straight back or with quick-turn 90° elbow. Steam dryer requires additional 3/4" steam hose clearance at back of unit(s). Installation of closet door(s) requires additional 1" minimum clearance between front of unit(s) and door(s). Location of plumbing, exhaust and utility hookups MUST be considered when planning any built-in installation. For additional installation details, refer to Product Installation Guides on web.

Under Counter Installation:

Installation of dryer alone or side by side with washer under counter, requires custom-built countertop and/or cabinetry to accommodate unit(s) height.

Stacking Units:

Stacking dryer above washer requires use of optional Stacking Kit (PN# STACKIT7X) with modified utility hookup locations for dryer. For complete installation details, refer to instructions included with Stacking Kit or on web.

Electric Dryer Specifications

- Product Weight – 130 Lbs. / Shipping Weight – 140 Lbs.
- Voltage Rating – 240/60 Hz/30A
- Single phase 3- or 4-wire cable, 240 Volt, 60 Hertz AC only electrical supply with ground required on separate circuit fused on both sides of line. (Do not use same circuit as washer.)
- Connected Load (kW Rating) @ 240 Volts = 6.0 kW
- Amps @ 240V = 25A
- Dryer MUST employ a 3-conductor NEMA 10-30 type SRDT or 4-conductor NEMA 14-30 type SRDT or ST (as required), rated at 240 volt AC minimum, 30 amp power supply cord marked for use with clothes dryers (not supplied).
- Grounding through neutral link prohibited in specific applications and certain locales, requiring use of 4-wire system. (For detailed electrical requirements, refer to Product Installation Guide on web.)
- Always consult local and national electric & plumbing codes.
- Can be installed alone, with or without optional 15" pedestal drawer, or stacked above matching Electrolux Washer, which requires installation of optional dryer stacking kit. (For installation details, refer to instructions included with optional pedestal or stacking kit or on web.)
- Can be built in alone or with matching Electrolux Washer (side by side or stacked) in closet, recess or under counter installation with 0" minimum clearance required around sides and back of unit(s). To achieve 0" minimum rear clearance, dryer MUST be vented straight back or with quick-turn 90° elbow. Steam dryer requires additional 3/4" steam hose clearance at back of unit(s). Installation of closet door(s) requires additional 1" minimum clearance between front of unit(s) and door(s). Location of plumbing, exhaust and utility hookups MUST be considered when planning any built-in installation.
- Under-counter installation requires custom-built countertop and/or cabinetry to accommodate unit(s) height.

- Do NOT install in area exposed to dripping water or outdoor weather conditions, or where gasoline or other flammables, including automobiles, are kept or stored.
- For garage installation, dryer MUST be located minimum 18" above floor.
- Floor MUST be solid with 1" maximum slope. To ensure vibration or movement does not occur, reinforcement of floor may be necessary. Do NOT install on carpeted surface.
- Dryer MUST exhaust to outside of building, NOT into any concealed space.
- Dryer equipped for 4-way venting and approved for up to 125-foot-equivalent of duct length, determined by length of run and number of elbows needed.
- Exhaust installation requires minimum 4"-diameter rigid or semi-rigid metal duct with approved, unobstructed vent hood having swing-out damper(s). If installing rigid metal duct (preferred), do not exceed MAXIMUM venting run length of 125 ft., allow deductions for elbows and vents. If installing semi-rigid metal duct, do not exceed MAXIMUM venting run length of 8 ft., always allow deductions for elbows and vents (Refer to Product Installation Guide on web for additional information). Do NOT use flexible plastic or metal foil duct and use shortest run possible.
- Leveling legs supplied to level dryer properly and reduce excessive noise and vibration.
- Water inlet hose for steam setting connects to cold water supply with "Y" connector and requires 3/4" clearance between back of unit and wall.

Note: For planning purposes only. Refer to Product Installation Guide on the web at electroluxappliances.ca for detailed instructions.

Optional Accessories

- Pedestal Drawers – Titanium (PN# EPWD257UTT), Island White (PN# EPWD257UIW).
- Dryer Stacking Kit – (PN# STACKIT7X).
- Drying Rack – (PN# A04840701).
- Assembly Hose Kit – (PN# 5304495002).



High standards of quality at Electrolux Home Products, Inc. mean we are constantly working to improve our products. We reserve the right to change specifications or discontinue models without notice.

Electrolux Major Appliances, N.A.

CANADA • 5855 Terry Fox Way • Mississauga, ON L5V 3E4 • 1-800-265-8352 • electroluxappliances.ca

EFMC627U 05/18

© 2018 Electrolux Major Appliances, N.A.

Printed in Canada