

# KitchenAid® ~~27" (68.6 cm)~~ and **30" (76.2 cm)** Electric Built-In Microwave/Oven Combination

## PRODUCT MODEL NUMBERS

KEMS309E      KOCE500E      KOCE507E

## ELECTRICAL CONNECTION

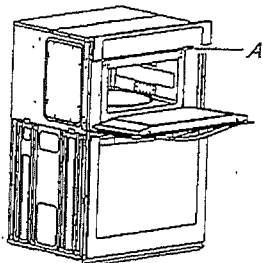
If codes permit and a separate ground wire is used, it is recommended that a qualified electrical installer determine that the ground path and the wire gauge are in accordance with local codes. Check with a qualified electrical installer if you are not sure the oven is properly grounded.

This oven must be connected to a grounded metal, permanent wiring system.

Be sure that the electrical connection and wire size are adequate and in conformance with the National Electrical Code, ANSI/NFPA 70-latest edition or CSA Standards C22.1-94, Canadian Electrical Code, Part 1 and C22.2 No. 0-M91-latest edition, and all local codes and ordinances.

To properly install your oven, you must determine the type of electrical connection you will be using and follow the instructions provided for it here.

- Oven must be connected to the proper electrical voltage and frequency as specified on the model/serial/rating plate. See the following illustration.



A. Model/serial/rating plate

- Models rated from 7.3 to 9.6 kW at 240 volts (5.4 to 7.4 kW at 208 volts) require a separate 40-amp circuit. Models rated at 4.8 kW and below at 240 volts (3.6 kW and below at 208 volts) require a separate 30-amp circuit.
- A circuit breaker is recommended.
- Connect directly to the fused disconnect (or circuit breaker box) through flexible, armored or nonmetallic sheathed, copper cable (with grounding wire). See "Make Electrical Connection" section.
- Flexible conduit from the oven should be connected directly to the junction box.
- Do not cut the conduit. The length of conduit provided is for serviceability of the oven.
- A UL listed or CSA approved conduit connector must be provided.
- If the house has aluminum wiring, follow the procedure below:
  1. Connect a section of solid copper wire to the pigtail leads.
  2. Connect the aluminum wiring to the added section of copper wire using special connectors and/or tools designed and UL listed for joining copper to aluminum.

Follow the electrical connector manufacturer's recommended procedure. Aluminum/copper connection must conform with local codes and industry accepted wiring practices.

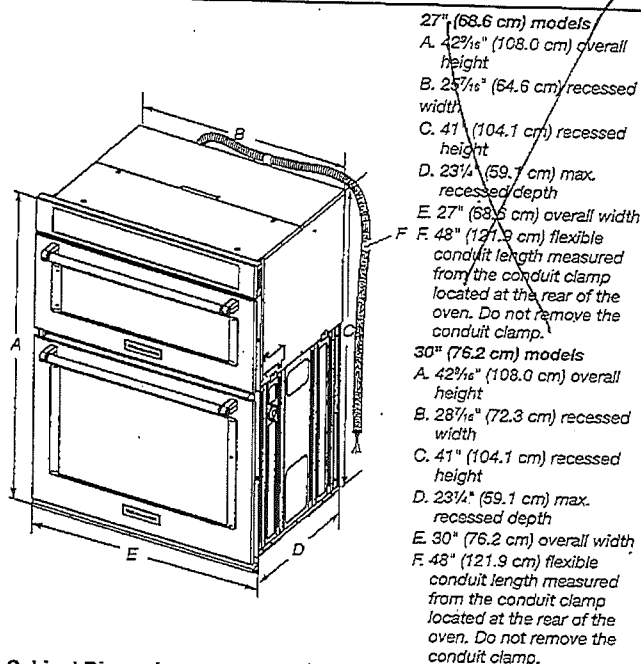
For power requirements, refer to the following table.

Model	Voltage	Amperage (L1)*	Amperage (L2)*	Rating (W)
KOCE507E/KOCE500E	120/240	32	30	8000
KOCE507E/KOCE500E	120/208	30	28	6600

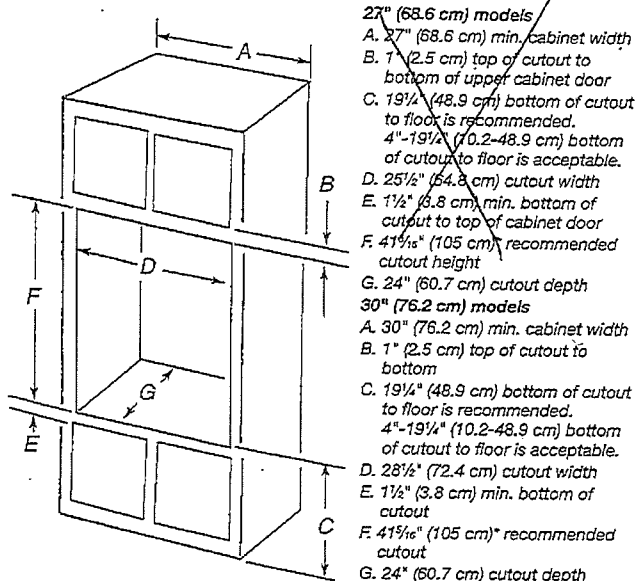
\*Amperage values noted above are for information purposes only: the units are rated in watts.

Because Whirlpool Corporation includes a continuous commitment to improve our products, we reserve the right to change materials and specifications without notice.

## PRODUCT DIMENSIONS



## Cabinet Dimensions



\* NOTE: The cabinet height can be between 41" (104.1 cm) and 41<sup>3</sup>/<sub>8</sub>" (105.6 cm) for microwave/oven combination.

NOV 2 9 2017

Lot 60  
Crosswinds



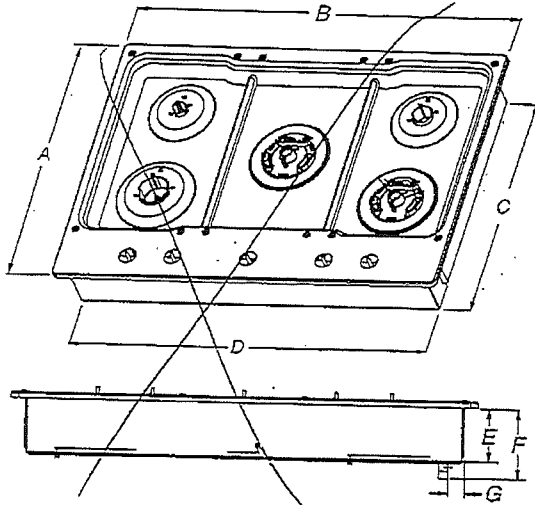
Because Whirlpool Corporation includes a continuous commitment to improve our products, we reserve the right to change materials and specifications without notice.

Dimensions are for planning purposes only. For complete details, see Installation Instructions packed with product. Specifications subject to change without notice.

Ref. W10725683B  
2/10/15

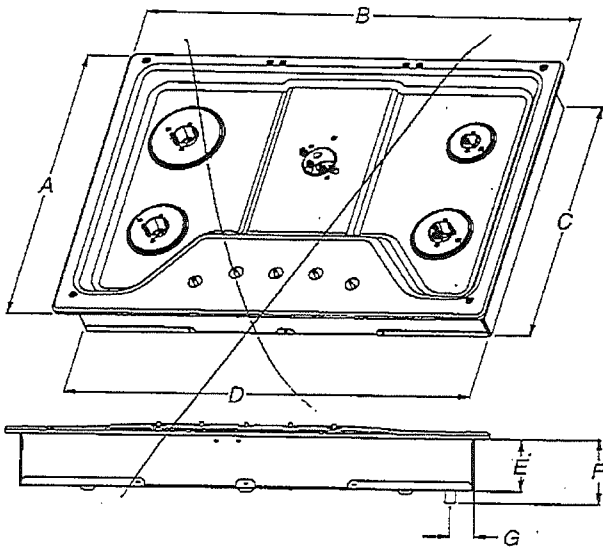
# Product Dimensions

## KCGS550ESS and KCGS950ESS Models



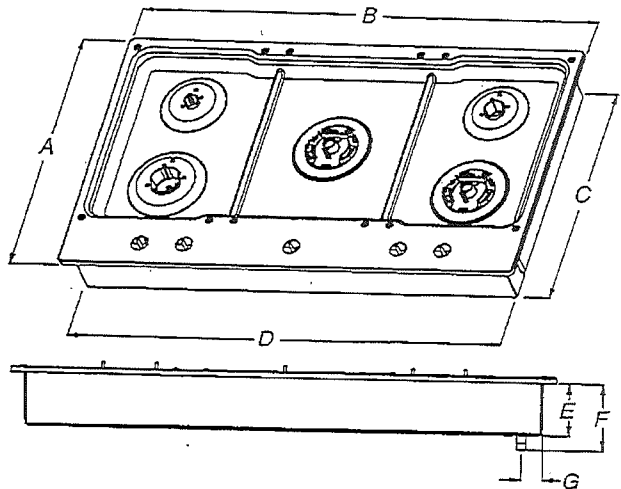
- A. 21" (53.3 cm)
- B. 30" (76.2 cm)
- C. 19 3/8" (49.2 cm)
- D. 28 3/8" (72.1 cm)
- E. 3 5/8" (9.2 cm)
- F. 4 9/16" (11.6 cm)
- G. 1 3/8" (3.4 cm)

## All Other 30" (76.2 cm) Models



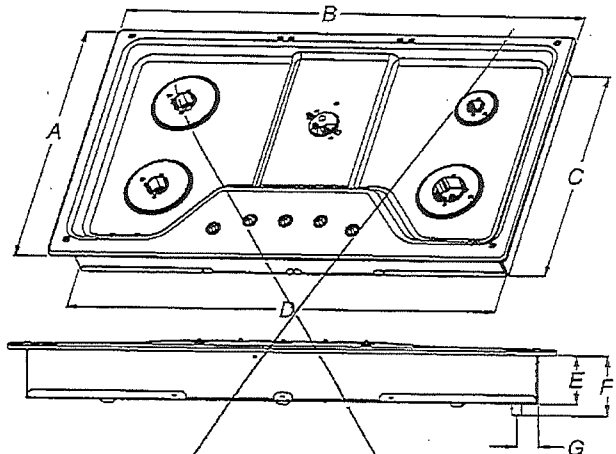
- A. 21" (53.3 cm)
- B. 30" (76.2 cm)
- C. 18 7/8" (48.0 cm)
- D. 28 3/8" (72.1 cm)
- E. 3 3/8" (8.6 cm)
- F. 4 1/8" (10.5 cm)
- G. 1 1/2" (3.8 cm)

## KCGS556ESS and KCGS956ESS Models



- A. 21" (53.3 cm)
- B. 36 1/4" (92.0 cm)
- C. 19 3/8" (49.2 cm)
- D. 34 3/8" (88.1 cm)
- E. 3 5/8" (9.2 cm)
- F. 4 9/16" (11.6 cm)
- G. 1 7/8" (3.6 cm)

## All Other 36" (91.4 cm) Models



- A. 21" (53.3 cm)
- B. 36" (91.4 cm)
- C. 18 7/8" (48.0 cm)
- D. 33 3/4" (85.7 cm)
- E. 3 3/8" (8.6 cm)
- F. 4 1/8" (10.5 cm)
- G. 1 1/2" (3.8 cm)

NOV 29 2017

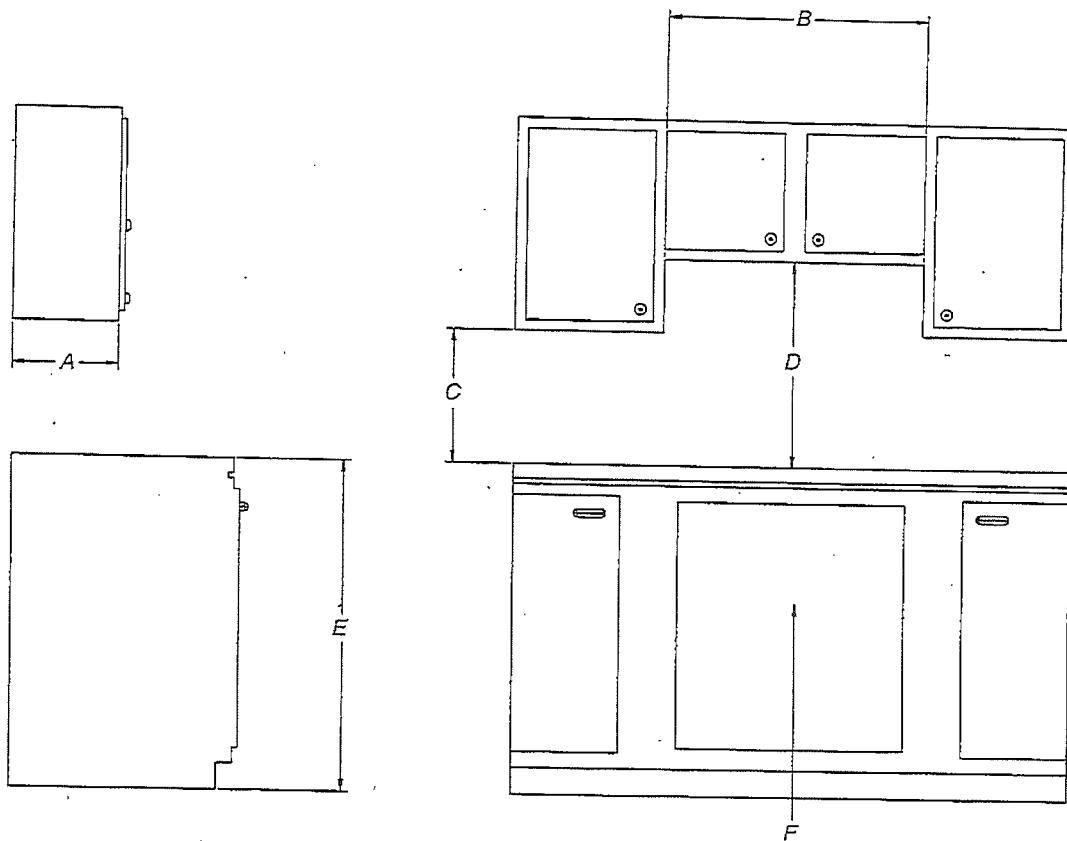
Lot 60  
CROSSWINDS

(A-11)

# Cabinet Clearances

Side View

Front View



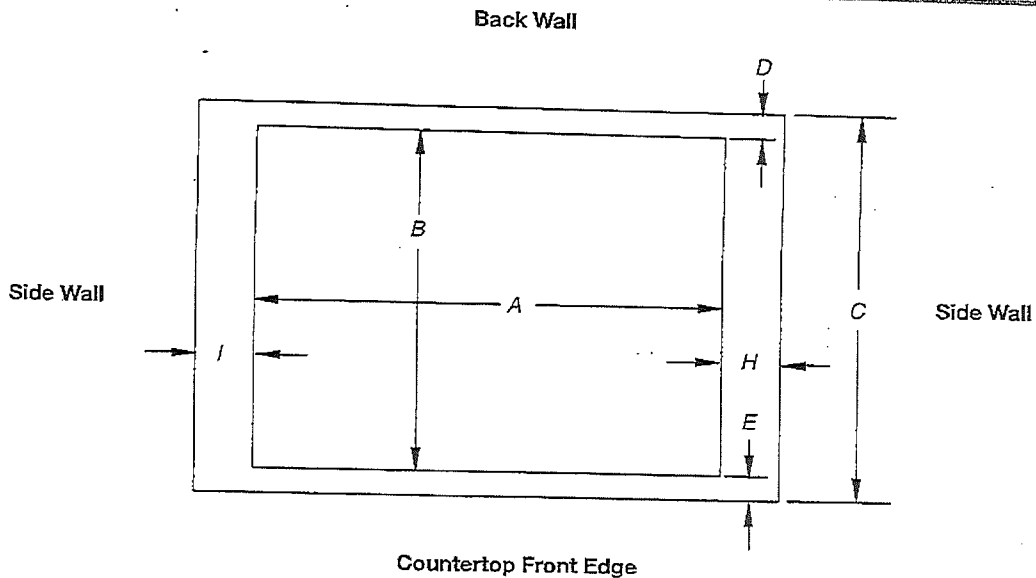
- A. 13" (33.0 cm) recommended upper cabinet depth.
- B. 30" (76.2 cm) for 30" models; 36" (91.4 cm) for 36" models.
- C. 18" (45.7 cm) minimum clearance from upper cabinet to countertop within minimum horizontal clearances to cooktop.
- D. 30" (76.2 cm) minimum clearance between top of cooktop platform and bottom of uncovered wood or metal cabinet.  
24" [61 cm] minimum clearance if bottom of wood or metal cabinet is covered by not less than 1/4" [0.6 cm] flame retardant millboard covered with not less than No. 28 MSG sheet steel, 0.015" [0.04 cm] stainless steel, or 0.024" [0.06 cm] aluminum or 0.020" [0.05 cm] copper.
- E. 36" (91.4 cm) top of countertop to floor.
- F. Gas line opening - Wall: anywhere 5" (12.7 cm) below underside of countertop. Cabinet floor: anywhere within 6" (15.2 cm) of rear wall is recommended.

NOV 29 2017

Lot 60  
CW

(Ane)

# Cutout Dimensions - Top View



Cutout (Product Opening) Dimensions						
30" (76.2 cm) Models						
Models	A			B		
	Min	Recommended	Max	Min	Recommended	Max
KCGS550 and KCGS950	28 1/2" (72.4 cm)	28 7/8" (73.4 cm)	29 5/8" (74.3 cm)	19 1/2" (49.5 cm)	19 3/8" (50.2 cm)	20" (50.8 cm)
All Other 30" (76.2 cm) Models	28 1/2" (72.4 cm)	28 7/8" (73.4 cm)	29 5/8" (74.3 cm)	19" (48.3 cm)	19 1/8" (49.5 cm)	20" (50.8 cm)
36" (91.4 cm) Models						
KCGS556 and KCGS956	34 7/8" (88.4 cm)	35 3/8" (89.4 cm)	35 5/8" (90.3 cm)	19 1/2" (49.5 cm)	19 3/8" (50.2 cm)	20" (50.8 cm)
All Other 36" (91.4 cm) Models	33 7/8" (86.0 cm)	34 5/8" (87.0 cm)	35 1/2" (89.5 cm)	19" (48.3 cm)	19 1/8" (49.5 cm)	20" (50.8 cm)

Side Walls (Combustible Surfaces)	
Models	H and I
KCGS5 and KCGS9	H and I added together must be at least 48" (122.0 cm), with each side individually being at least 8" (20.3 cm).
KCGS350, KCGS356, MGC9536, WCG97US0, WCG97US6	H and I added together must be at least 48" (122.0 cm), with each side individually being at least 12" (30.5 cm).
All Other Models	Both have to be 8" (20.3 cm) or more.

Back Wall and Countertop Front Dimensions			
Models	C	D	E
KCGS550 and KCGS950	25" (63.5 cm)	2 7/8" (7.3 cm)	2 3/4" (6.9 cm)
All Other Models			3 1/8" (7.9 cm)

**NOTES:** After making the countertop cutout, some installations may require notching down the base cabinet side walls to clear the cooktop base. To avoid this modification, use a base cabinet with sidewalls wider than the cutout.

If cabinet has a drawer, a 4" (10.2 cm) depth clearance from the countertop to the top of the drawer (or other obstruction) in base cabinet is required. The drawer depth may need to be shortened to avoid interfering with the regulator.

**IMPORTANT:** If a built-in wall oven is to be installed below this cooktop, the grounded outlet and gas supply piping must be located in an adjacent cabinet.

This cooktop and its gas and electrical supply sources must be installed before the undercounter built-in wall oven is installed.

NOT 2 3 28 11

Lot 60  
CW

# INSTALLATION REQUIREMENTS

## Tools and Parts

Gather the required tools and parts before starting installation. Read and follow the instructions provided with any tools listed here.

### Tools needed

- Phillips screwdriver
- Flat-blade screwdriver
- Measuring tape
- Level
- Drill
- 1<sup>3</sup>/<sub>8</sub>" (3.5 cm) hole saw

### Parts supplied

- Two #8-18 x 1/2" screws
- Lens (for panel ready models)

Check local codes. Check existing electrical supply. See "Electrical Requirements."

It is recommended that all electrical connections be made by a licensed, qualified electrical installer.

## Location Requirements

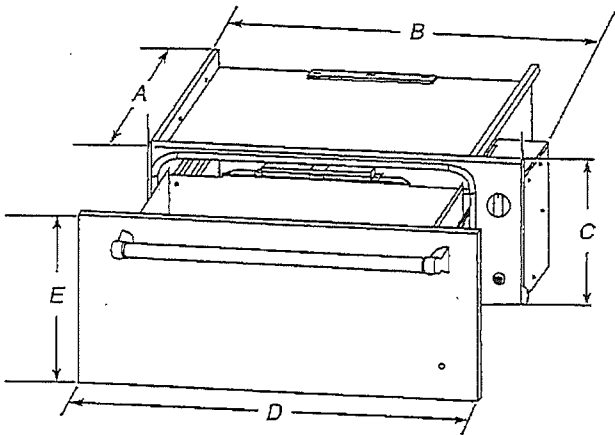
**IMPORTANT:** Observe all governing codes and ordinances.

- Cutout dimensions that are shown must be used. Given dimensions provide minimum clearance with warming drawer.
- Recessed installation area must provide complete enclosure around the recessed portion of the warming drawer.
- Grounded electrical supply is required. See "Electrical Requirements" section.
- Electrical supply outlet should be located in the rear wall on the upper right-hand side of the cutout or in an adjacent cabinet. The outlet must be recessed. If the electrical outlet is located in an adjacent cabinet, a 1<sup>3</sup>/<sub>8</sub>" (3.5 cm) minimum diameter hole should have been drilled in the back of the cutout or support surface to pass the power supply cord through to the outlet.
- Warming drawer support surface must be solid, level, and flush with bottom of cabinet cutout.
- Warming drawers with oiled bronze, black glass, and white glass panels are approved for indoor use only.
- Support surface must be solid, level, and flush with the bottom of the cabinet cutout.
- 24" (61.0 cm) minimum cabinet depth.

For best performance results make sure the warming drawer is leveled before completing installation. There is no way to level the warming drawer after it has been installed. If the installation is not level, the door may slide open or not seal tightly, allowing heat to escape.

**NOTE:** If installing the warming drawer below another product, refer to that product's literature for any installation requirements.

## Product Dimensions



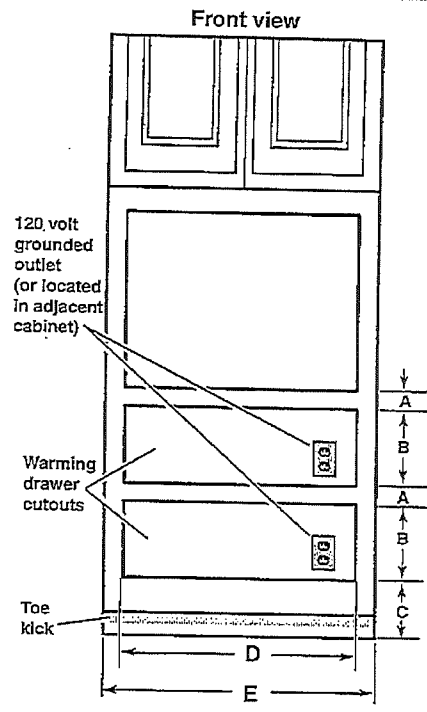
WARMING DRAWER SIZE	OVEN DEPTH (A)	RECESSED WIDTH (B)	RECESSED HEIGHT (C)	OVERALL WIDTH (D)	DRAWER FRONT HEIGHT (E)
24" (60.9 cm)	23 <sup>1</sup> / <sub>8</sub> " (58.7 cm)	22 <sup>1</sup> / <sub>4</sub> " (56.5 cm)	9" (22.9 cm)	23 <sup>3</sup> / <sub>4</sub> " (60.3 cm)	10 <sup>1</sup> / <sub>4</sub> " (26.1 cm)
27" (68.6 cm)	23 <sup>1</sup> / <sub>8</sub> " (58.7 cm)	25 <sup>1</sup> / <sub>4</sub> " (64.1 cm)	9" (22.9 cm)	26 <sup>3</sup> / <sub>4</sub> " (67.9 cm)	10 <sup>1</sup> / <sub>4</sub> " (26.1 cm)
30" (76.2 cm)	23 <sup>1</sup> / <sub>8</sub> " (58.7 cm)	28 <sup>1</sup> / <sub>4</sub> " (71.8 cm)	9" (22.9 cm)	29 <sup>3</sup> / <sub>4</sub> " (75.6 cm)	10 <sup>1</sup> / <sub>4</sub> " (26.1 cm)

NOV 29 2017

Lot 60  
Crosswinds

(AN)

Clearance Dimensions



WARMING DRAWER SIZE	MINIMUM BETWEEN CUTOUTS (A)	CUTOUT HEIGHT (B)	MINIMUM/RECOMMENDED (C)	CUTOUT WIDTH (D)	MINIMUM CABINET WIDTH (E)
24" (60.9 cm)	2 1/2" (6.4 cm)	9 1/8" (23.2 cm)	1" (2.5 cm) / 4 1/4" (10.8 cm)	22 1/2" (57.1 cm)	24" (60.9 cm)
27" (68.6 cm)	2 1/2" (6.4 cm)	9 1/8" (23.2 cm)	1" (2.5 cm) / 4 1/4" (10.8 cm)	25 1/2" (64.8 cm)	27" (68.6 cm)
30" (76.2 cm)	2 1/2" (6.4 cm)	9 1/8" (23.2 cm)	1" (2.5 cm) / 4 1/4" (10.8 cm)	28 1/2" (72.4 cm)	30" (76.2 cm)

Warming drawer can be installed as an indoor single or double installation or installed under a single oven. Two warming drawers under a single oven are shown.

**NOTE:** The warming drawer cannot be leveled after being installed.

For outdoor installation, follow the cutout dimensions above. Install the outdoor warming drawer in a permanent fixture.

**Custom Wood Drawer Front**

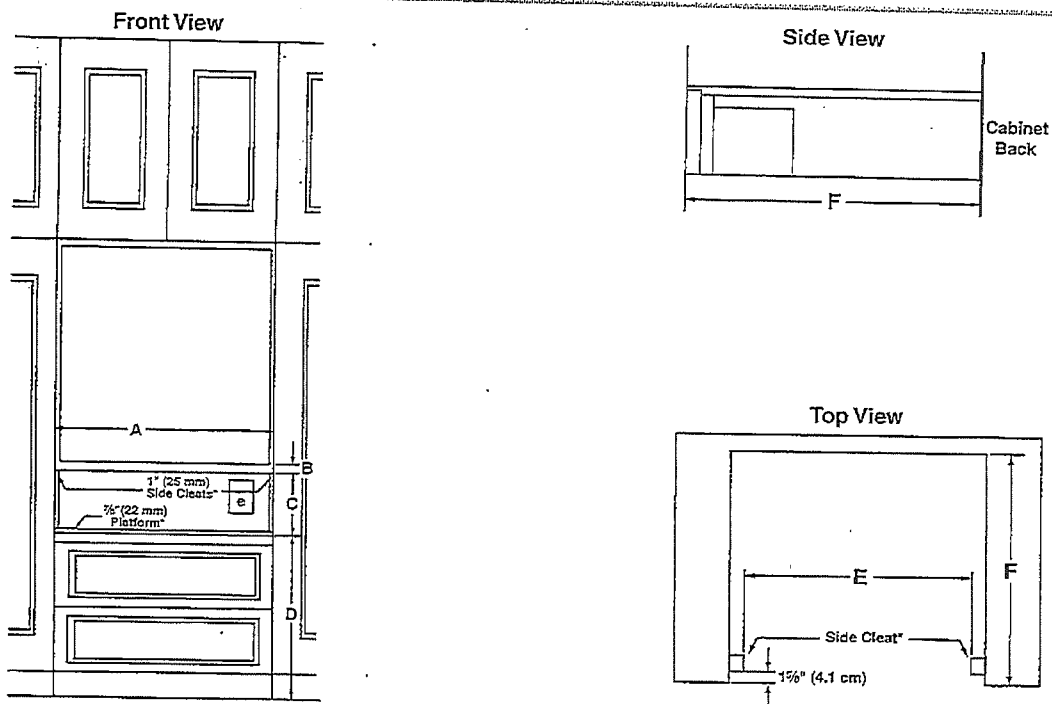
If you plan to install a custom wood panel to match your cabinets, we recommend consulting a qualified cabinetmaker or carpenter. The back of the wood panel must be sealed to avoid moisture damage.

NOV 29 2017

Lot 60  
clw

AM

Clearance Dimensions - Flush Installation



	27" Models	30" Models
A Width of flush inset cutout (minimum)	27 1/4" (69.2 cm)	30 1/4" (76.8 cm)
B Height between cutouts (minimum)	2 1/2" (6.4 cm)	2 1/2" (6.4 cm)
C Height of flush inset cutout (minimum)	10 3/4" (27.3 cm)	10 3/4" (27.3 cm)
D Bottom of cutout to floor (recommended)	8 1/4" (21.0 cm)	8 1/4" (21.0 cm)
Bottom of cutout to floor (minimum)	5" (12.7 cm)	5" (12.7 cm)
E Width of opening (minimum)	25 1/4" (64.1 cm)	28 1/4" (71.8 cm)
F Depth of cutout (minimum)	25" (63.5 cm)	25" (63.5 cm)
e Recommended outlet location		

Flush Installation Requirements

A 25" (63.5 cm) minimum cutout depth is required.  
These dimensions will result in a 1/4" (6 mm) reveal on all sides of the warming drawer.  
\*The front face of the cleats and platforms will be visible and should be treated as a finished surface.

NOV 29 2017

Lot 60  
CW

AN