



CONSTRUCTION SUMMARY

2 - 1 - 38-4 Elev.B VIVALDI

DRYWALL

Inv.543	1 - WAFFLE CEILING IN DINING ROOM
Line6805	Note:
7Jun16 / 9Jun16	

EXTERIOR COLOURS

Inv.543	1 - EXTERIOR COLOUR PACKAGE 1
Line6583	Note:
7Jun16 / 9Jun16	

FORMING

Inv.543	1 - COLD CELLAR
Line6587	Note:
7Jun16 / 9Jun16	

FRAMING

Inv.543	1 - MANDOOR - GARAGE TO HOUSE- AS PER PLAN AND GRADE PERMITING
Line6582	Note:
7Jun16 / 9Jun16	
Inv.543	1 - OPTIONAL 10 FOOT TRAY CEILING - MASTER BEDROOM (AS PER PLAN)
Line6589	Note:
7Jun16 / 9Jun16	
Inv.543	1 - OPTIONAL COFFERED CEILING - FAMILY ROOM (PER ROOM AS PER PLAN)
Line6590	Note:
7Jun16 / 9Jun16	
Inv.543	1 - MAIN FLOOR CEILING 10FT
Line6716	Note:
7Jun16 / 9Jun16	
Inv.543	1 - EXTENDED HEIGHT ARCHWAYS (PRICE PER DOORWAY)
Line6718	Note:
7Jun16 / 9Jun16	
Inv.543	1 - FRAME MAIN FLOOR DOORS AT 96" - ADDED WITH THE ADDITION OF TALLER INTERIOR DOORS
Line6719	Note:
7Jun16 / 9Jun16	
Inv.543	1 - DELETE KITCHEN BULK-HEAD -MUST BE APPROVED BY H.O.- INCLUDED WITH CROWN AND FURRING PANEL
Line6720	Note:
7Jun16 / 9Jun16	
Inv.543	1 - SMOOTH CEILINGS - (2-Story Design) 2ND FLOOR
Line6721	Note:
7Jun16 / 9Jun16	
Inv.543	1 - SMOOTH CEILINGS - (2-Story Design) MAIN FLOOR
Line6722	Note:
7Jun16 / 9Jun16	



CONSTRUCTION SUMMARY

2 - 1 - 38-4 Elev.B VIVALDI

Inv.543	1 - FREE STANDING TUB IN MASTER
Line6723	Note:
7Jun16 / 9Jun16	
Inv.543	1 - DELETE KITCHEN BULK-HEAD -MUST BE APPROVED BY H.O.- INCLUDED WITH CROWN AND FURRING PANEL
Line6800	Note:
7Jun16 / 9Jun16	
Inv.543	1 - SHOWER STALL SHAMPOO SHELF
Line6804	Note:
7Jun16 / 9Jun16	

INTERIOR TRIM AND DOORS

Inv.543	4 - STANDARD DOOR EXTENDED HEIGHT 96" (PRICE PER DOOR)- GROUND FLOOR 2 STOREY MODELS
Line6607	Note:
7Jun16 / 9Jun16	
Inv.543	4 - EXTENDED HEIGHT ARCHWAY (PRICE PER DOORWAY) -INCLUDE FRAMING NOTE
Line6608	Note:
7Jun16 / 9Jun16	

PLUMBING

Inv.543	1 - ROUGH-IN - 3PC BASEMENT ROUGH-IN
Line6586	Note:
7Jun16 / 9Jun16	
Inv.543	1 - UPGRADE TO FREE STANDING TUB
Line6724	Note:
7Jun16 / 9Jun16	

WINDOWS - BASEMENT

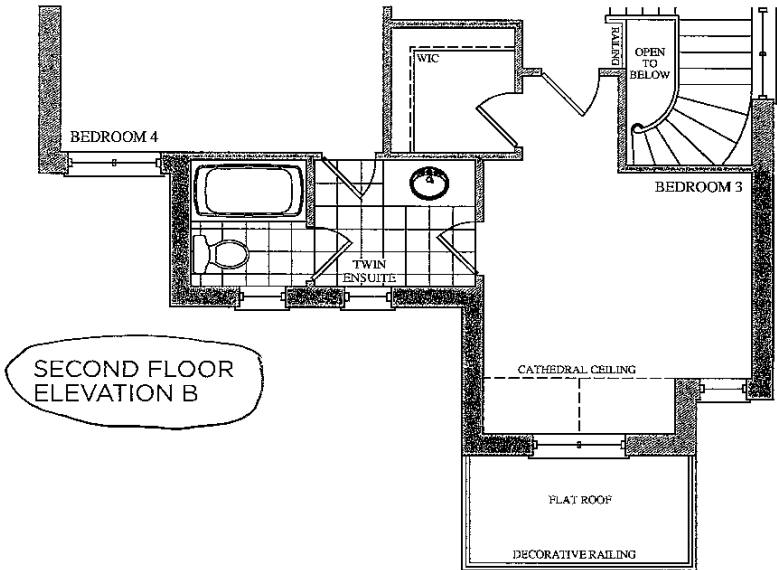
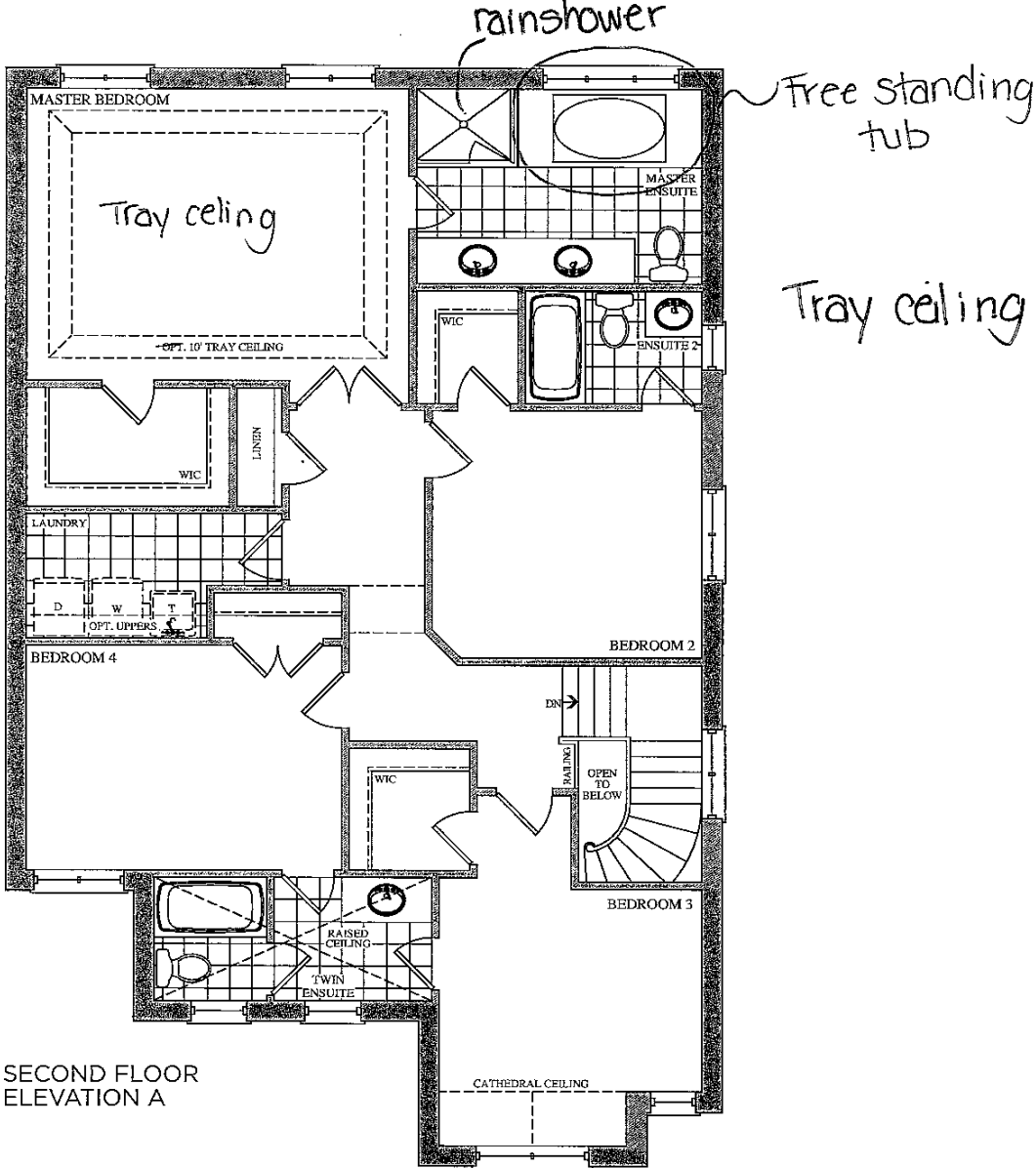
Inv.543	1 - BASEMENT WINDOWS - UPGRADE EXISTING BASEMENT WINDOW TO 53 INCH X 16 INCH - MAY REQUIRE INSTALLATION OF WINDOW WELL
Line6584	Note:
7Jun16 / 9Jun16	
Inv.543	3 - BASEMENT WINDOWS - UPGRADE EXISTING BASEMENT WINDOW TO 30 INCH X 24 INCH - MAY REQUIRE INSTALLATION OF WINDOW WELL
Line6585	Note:
7Jun16 / 9Jun16	

WINDOWS AND DOORS

Inv.543	1 - MAN DOOR GARAGE TO HOUSE - OPTIONAL - IF GRADE PERMITS
Line6581	Note:
7Jun16 / 9Jun16	

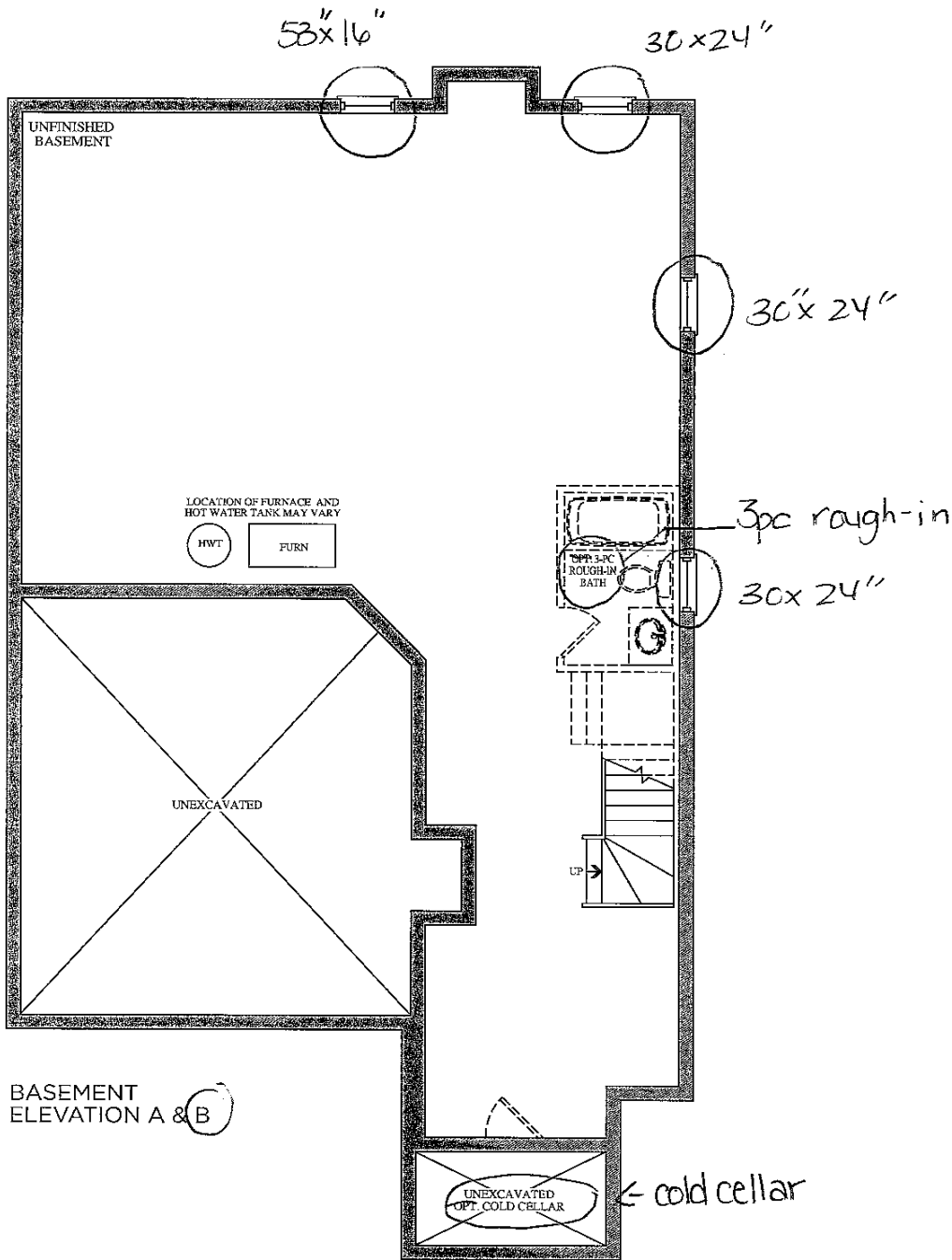
The
Vivaldi
38' SERIES

Elevation A • 2,518 sq.ft. | Elevation B • 2,518 sq.ft.



Lot 2

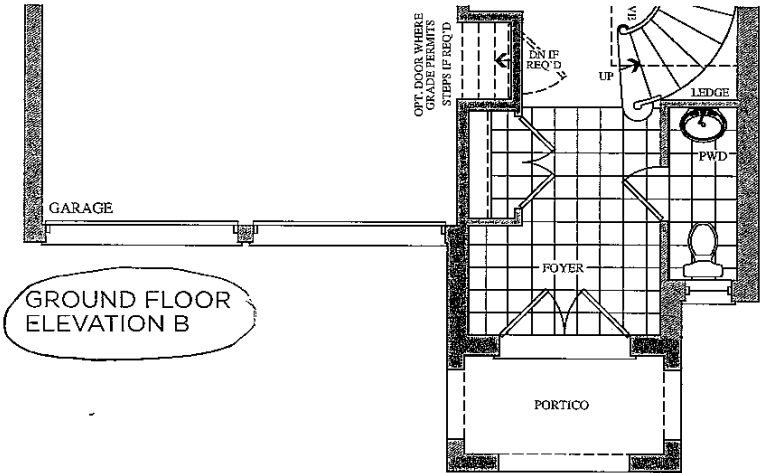
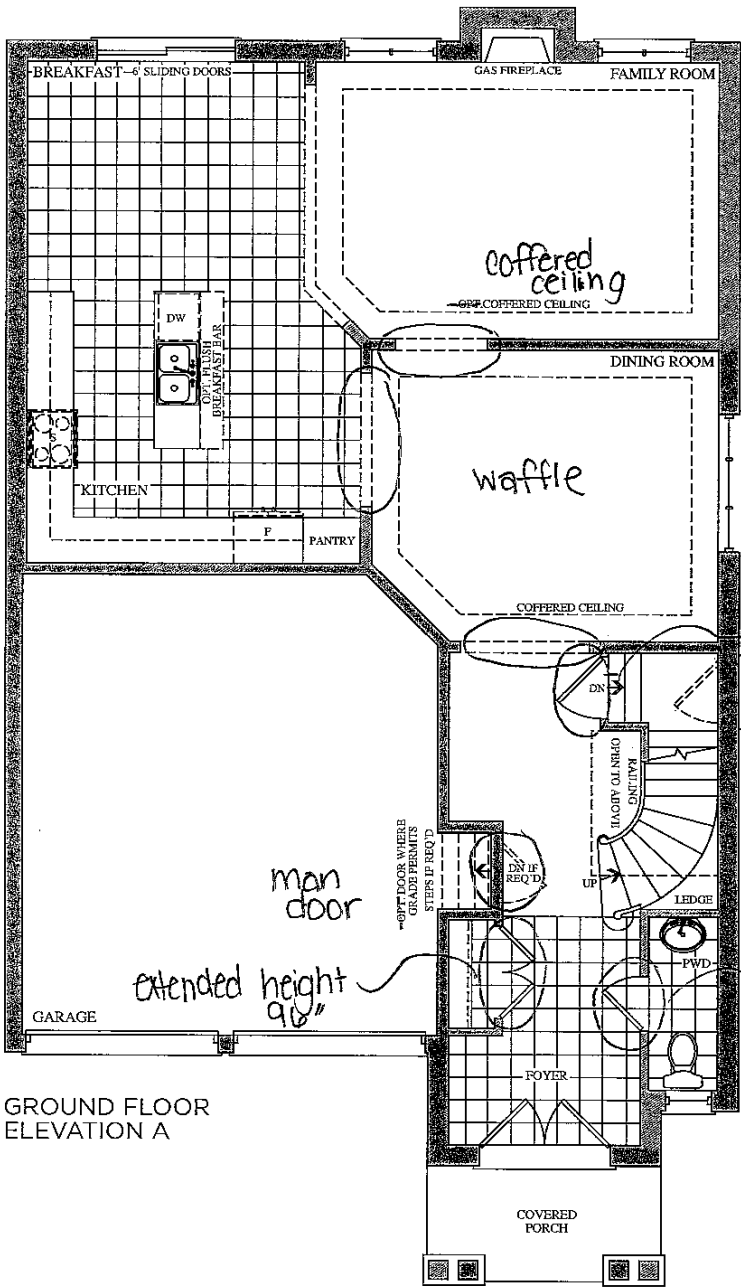
Prices, figures, illustrations, sizes, features and finishes are subject to change without notice. E.&O.E. Areas and dimensions are approximate and actual usable floor space may vary from the stated area. Layout may be reverse of the unit purchased. E. & O.E.



Lot 2

The
Vivaldi
38' SERIES

Elevation A • 2,518 sq.ft. | Elevation B • 2,518 sq.ft.



Prices, figures, illustrations, sizes, features and finishes are subject to change without notice. E.&O.E. Areas and dimensions are approximate and actual usable floor space may vary from the stated area. Layout may be reverse of the unit purchased. E. & O.E.