

Kleinburg Glen - 38 - 1 - 38-1 Elev.B HAMPTON

CENTRAL VAC AND WIRING

Inv.710	2 - FAMILY ROOM & BEDROOM 4: ROUGH - IN FIBER OPTIC CABLE - HOME RUN TO ELECTRICAL PANEL - See plan for location.
Line9586	Note:
28Jul16 / 7Nov16	

CERAMIC

Inv.710	1 - THRU OUT: *DELETE* MIRRORS AND ACCESSORIES
Line10523	Note:
28Jul16 / 7Nov16	

DRYWALL

Inv.710	1 - 2ND FLOOR: SMOOTH CEILINGS - (2 - Story Design) 2ND FLOOR
Line9573	Note:
28Jul16 / 7Nov16	

Inv.710	1 - GARAGE: FULLY INSULATE GARAGE
Line9578	Note:
28Jul16 / 7Nov16	

ELECTRICAL

Inv.710	1 - KITCHEN: 110V WALL RECEPTACLE ON DEDICATED CIRCUIT - for future 600+ cfm fan
Line9547	Note:
28Jul16 / 7Nov16	

Inv.710	1 - KITCHEN: 110V WALL RECEPTACLE ON DEDICATED CIRCUIT - GAS FIRED APPLIANCE - FOR AUX. EQUIPMENT - NOT A STOVE PLUG
Line9549	Note:
28Jul16 / 7Nov16	

Inv.710	1 - KITCHEN: ROUGH - IN CEILING OUTLET ON SAME SWITCH - DOES NOT INCLUDE FIXTURE - Locate above island, using same switch as standard. See plan for location.
Line9552	Note:
28Jul16 / 7Nov16	

Inv.710	6 - KITCHEN: POT LIGHT: 4 INCH HALOGEN POT LIGHT - 440 WH - PRICED PER LIGHT - 10 OR MORE -See plan for location.
Line9553	Note:
28Jul16 / 7Nov16	

Inv.710	1 - KITCHEN: Single pole switch for potlights
Line9554	Note:
28Jul16 / 7Nov16	

Inv.710	8 - GREAT ROOM: POT LIGHT: 4 INCH HALOGEN POT LIGHT - 440 WH - PRICED PER LIGHT - 10 OR MORE *NOTE:* cap standard ceiling light, install 8 potlights in addition to standard. See plan for location.
Line9555	Note:
28Jul16 / 7Nov16	

Inv.710	1 - KITCHEN CABINET VALANCE LIGHTS (UNDER CABINETS) - WITH STRIP LIGHTS - DOES NOT INCLUDE (AND REQUIRES) KITCHEN UPGRADE PRICING
Line9556	Note:
28Jul16 / 7Nov16	

Inv.710	4 - DINING ROOM: POT LIGHT: 4 INCH HALOGEN POT LIGHT - 440 WH - PRICED PER LIGHT - 10 OR MORE
Line9557	Note:
28Jul16 / 7Nov16	

Kleinburg Glen - 38 - 1 - 38-1 Elev.B HAMPTON

Inv.710	1 - DINING ROOM: UPGRADE TO DIMMER SWITCH - ONE UNIT - for potlights in dining room
Line9558	Note:
28Jul16 / 7Nov16	
Inv.710	6 - MAIN HALL: POT LIGHT: 4 INCH HALOGEN POT LIGHT - 440 WH - PRICED PER LIGHT - 10 OR MORE *DELETE STANDARD LIGHTS* Install 8 potlights using standard switches. See plan for location.
Line9559	Note:
28Jul16 / 7Nov16	
Inv.710	1 - 2nd floor LAUNDRY ROOM: UNDER CABINET VALANCE LIGHTS (UNDER CABINETS) - WITH STRIP LIGHTS - DOES NOT INCLUDE (AND REQUIRES) CABINETRY UPGRADE PRICING
Line10507	Note:
28Jul16 / 7Nov16	
Inv.710	1 - BREAKFAST: Single pole switch for potlights
Line10509	Note:
28Jul16 / 7Nov16	
Inv.710	3 - MASTER ENSUITE: POT LIGHT: 4 INCH HALOGEN POT LIGHT - 440 WH (INSULATED) - PRICED PER LIGHT - 10 OR MORE POTLIGHTS *DELETE STANDARD CEILING LIGHT, install 3 potlights using standard switch. See plan for location.
Line9566	Note:
28Jul16 / 7Nov16	
Inv.710	2 - MASTER ENSUITE: ROUGH - IN WALL OUTLET ON SAME SWITCH - DOES NOT INCLUDE FIXTURE - In addition to builders standard vanity light, install 2 rough-in outlets at either end of vanity, using same switch as standard. See plan for location.
Line9567	Note:
28Jul16 / 7Nov16	
Inv.710	3 - UPPER HALL: POT LIGHT: 4 INCH HALOGEN POT LIGHT - 440 WH (INSULATED) - PRICED PER LIGHT - 10 OR MORE POTLIGHTS *DELETE STANDARD LIGHTS, EXCEPT LIGHT ABOVE STAIRS, install 3 potlights using standard switch. See plan for location.
Line9564	Note:
28Jul16 / 7Nov16	
Inv.710	1 - REAR EXTERIOR: SECURITY FLOODLIGHTS WITH 2 LAMPS & 3 - WAY SWITCH - Locate near soffit at each corner of house. Switch located in breakfast area.
Line9579	Note:
28Jul16 / 7Nov16	
Inv.710	1 - REAR EXTERIOR - Add 1 exterior coach light to other side of patio doors - upgrade both fixtures TO SAME AS FRONT COACH LIGHTS (1 standard + 1 extra light with both fixtures upgraded)
Line9580	Note:
28Jul16 / 7Nov16	
Inv.710	10 - EXTERIOR: POT LIGHT: 4 INCH LINE VOLTAGE POT LIGHT - (EXTERIOR) - EACH 6@ FRONT; 2@ LEFT SIDE; 2@ RIGHT SIDE - See sketch for location.
Line9581	Note:
28Jul16 / 7Nov16	
Inv.710	1 - FOYER: Single pole switch for exterior soffit lights
Line9582	Note:
28Jul16 / 7Nov16	
Inv.710	1 - KITCHEN: 220V outlet located in backsplash for european small appliances. See plan for location.
Line9583	Note:
28Jul16 / 7Nov16	

Kleinburg Glen - 38 - 1 - 38-1 Elev.B HAMPTON

Inv.710	1 - MASTER ENSUITE: ROUGH - IN CEILING OUTLET & SWITCH (WITH COVER PLATE) - DOES NOT INCLUDE FIXTURE - Locate approx. center above tub.
Line10515	Note:
28Jul16 / 7Nov16	
Inv.710	1 - KITCHEN: RELOCATE STANDARD FIXTURE - Locate above island. See plan for location.
Line10504	Note:
28Jul16 / 7Nov16	
Inv.710	1 - GREAT ROOM: UPGRADE TO DIMMER SWITCH - ONE UNIT - for potlights in great room
Line10505	Note:
28Jul16 / 7Nov16	
Inv.710	1 - POWDER ROOM: *DELETE* standard vanity light, install a STANDARD ceiling FIXTURE ON SAME SWITCH. See plan for location.
Line10506	Note:
28Jul16 / 7Nov16	
Inv.710	3 - BREAKFAST: POT LIGHT: 4 INCH HALOGEN POT LIGHT - 440 WH - PRICED PER LIGHT - 10 OR MORE
Line10508	Note:
28Jul16 / 7Nov16	
Inv.710	1 - MASTER ENSUITE: MOVE STANDARD GFI outlet to one side of vanity & add a 2nd GFI outlet at other side of vanity. See plan for location.
Line10510	Note:
28Jul16 / 7Nov16	
Inv.710	1 - KITCHEN: 110V WALL RECEPTACLE ON DEDICATED CIRCUIT - FOR MICROWAVE - MICROWAVE NOT INCLUDED - locate in island below counter. See plan for location.
Line10514	Note:
28Jul16 / 7Nov16	
Inv.710	1 - FOYER CLOSET: Closet auto-light (hinge activated switch)
Line10518	Note:
28Jul16 / 7Nov16	
Inv.710	1 - 200 AMP ELECTRICAL SERVICE
Line10520	Note:
28Jul16 / 7Nov16	

EXTERIOR COLOURS

Inv.710	1 - EXTERIOR COLOUR PACKAGE 7
Line13434	Note:
28Jul16 / 7Nov16	

FORMING

Inv.710	1 - BASEMENT: BACK FLOW PREVENTER VALVE.
Line12423	Note:
28Jul16 / 7Nov16	

FRAMING

Inv.710	1 - KITCHEN: *REDUCE* BULKHEADS IN KITCHEN - to be enclosed in future cabinetry furring panel (cabinetry customization is extra to be purchased at colour appointment) site approval required.
Line9550	Note:
28Jul16 / 7Nov16	

Kleinburg Glen - 38 - 1 - 38-1 Elev.B HAMPTON

Inv.710	1 - MASTER ENSUITE: SHOWER STALL SEAT
Line9571	Note:
28Jul16 / 7Nov16	

Inv.710	1 - MASTER ENSUITE: SHOWER STALL SHAMPOO SHELF
Line9572	Note:
28Jul16 / 7Nov16	

Inv.710	1 - GREAT ROOM: OPTIONAL COFFERED CEILING - GREAT ROOM (PER ROOM AS PER PLAN EXCLUDES 25.3 MODELS
Line9587	Note:
28Jul16 / 7Nov16	

Inv.710	9 - MAIN FLOOR: FRAME MAIN FLOOR DOORS & ARCHES AT 96 INCH - ADDED WITH THE ADDITION OF TALLER INTERIOR DOORS - INCLUDING garage to house door
Line10516	Note:
28Jul16 / 7Nov16	

Inv.710	16 - 2ND FLOOR: FRAME 2ND FLOOR DOORS AT 96 INCH - ADDED WITH THE ADDITION OF TALLER INTERIOR DOORS -96"
Line10524	Note:
28Jul16 / 7Nov16	

GARAGE DOORS

Inv.710	2 - GARAGE DOOR OPENER - WITH 1 REMOTE - PRICE IS PER DOOR
Line9588	Note:
28Jul16 / 7Nov16	

Inv.710	1 - GARAGE: DIGITAL ENTRY KEYPAD . See plan for location.
Line9589	Note:
28Jul16 / 7Nov16	

GLASS AND MIRROR

Inv.710	1 - MASTER ENSUITE: CONVERT FRAMED SHOWER TO 10MM FRAMELESS SHOWER ENCLOSURE WITH DOOR AND 10MM SIDE PANEL
Line9568	Note:
28Jul16 / 7Nov16	

Inv.710	1 - THRU OUT: *DELETE* MIRRORS AND ACCESSORIES
Line12422	Note:
28Jul16 / 7Nov16	

HVAC

Inv.710	1 - KITCHEN: UPGRADE VENTING FOR STOVE TO 8 INCH PIPE EXTERIOR WALL
Line9546	Note:
28Jul16 / 7Nov16	

Inv.710	1 - KITCHEN: GAS LINE ROUGH - GROUND FLOOR
Line9548	Note:
28Jul16 / 7Nov16	

Inv.710	1 - HUMIDIFIER: WB3 - 17 (UP TO 3,000 SQ.FT.)
Line10522	Note:
28Jul16 / 7Nov16	

INTERIOR TRIM AND DOORS

Kleinburg Glen - 38 - 1 - 38-1 Elev.B HAMPTON

Inv.710	4 - MAIN FLOOR: STANDARD DOOR EXTENDED HEIGHT 96 INCH (PRICE PER DOOR) MAIN FLOOR 3 STOREY MODELS - INCLUDE FRAMING NOTE
Line10517	Note:
28Jul16 / 7Nov16	
Inv.710	4 - MAIN FLOOR: EXTENDED HEIGHT ARCHWAY (PRICE PER DOORWAY) - 96"
Line10519	Note:
28Jul16 / 7Nov16	
Inv.710	16 - 2ND FLOOR: STANDARD DOOR EXTENDED HEIGHT 96 INCH (PRICE PER DOOR) - SECOND FLOOR 2 STOREY 38 FOOT AN 42 FOOT MODELS ONLY
Line10525	Note:
28Jul16 / 7Nov16	

MISC.

Inv.710	1 - Purchaser has attended a Structural appointment at the Decor Centre & has DECLINED any additional upgrades and accepts and acknowledges that there will be no further structural changes/additions/deletions to be made upon signing on August 23, 2016.
Line10511	Note:
28Jul16 / 7Nov16	
Inv.710	1 - BONUS PACKAGE: \$7,500.00 (INCLUDING TAXES) WORTH OF UPGRADES FROM GOLD PARK HOMES DÉCOR CENTRE IS BEING APPLIED TOWARD THE STRUCTURAL APPOINTMENT. PURCHASER HAS A REMAINING AMOUNT OF \$00 (INCLUDING TAXES) TO BE USED TOWARD THE COLOUR APPOINTMENT.
Line10513	Note:
28Jul16 / 7Nov16	
Inv.710	1 - KITCHEN: Install prep sink on island.
Line9830	Note:
28Jul16 / 7Nov16	
Inv.710	1 - Purchasers are aware & accepts that ANY changes made to upgrades after signing this Purchasers Extra Form are subject to a minimum administration fee of \$500. PLUS a 10% holdback fee.
Line10512	Note:
28Jul16 / 7Nov16	

PLUMBING

Inv.710	1 - KITCHEN: ROUGH - IN - WATERLINE FOR FRIDGE
Line9575	Note:
28Jul16 / 7Nov16	
Inv.710	1 - MASTER ENSUITE: ROUGH - IN FOR RAINSHOWER HEAD - SHOWER HEAD NOT INCLUDED AND MUST BE PURCHASED
Line9576	Note:
28Jul16 / 7Nov16	
Inv.710	1 - MASTER ENSUITE: UPGRADE TO FREE STANDING TUB - UPG1 ONLY
Line9577	Note:
28Jul16 / 7Nov16	
Inv.710	1 - BASEMENT: BACK FLOW PREVENTER VALVE.
Line10521	Note:
28Jul16 / 7Nov16	

WINDOWS AND DOORS

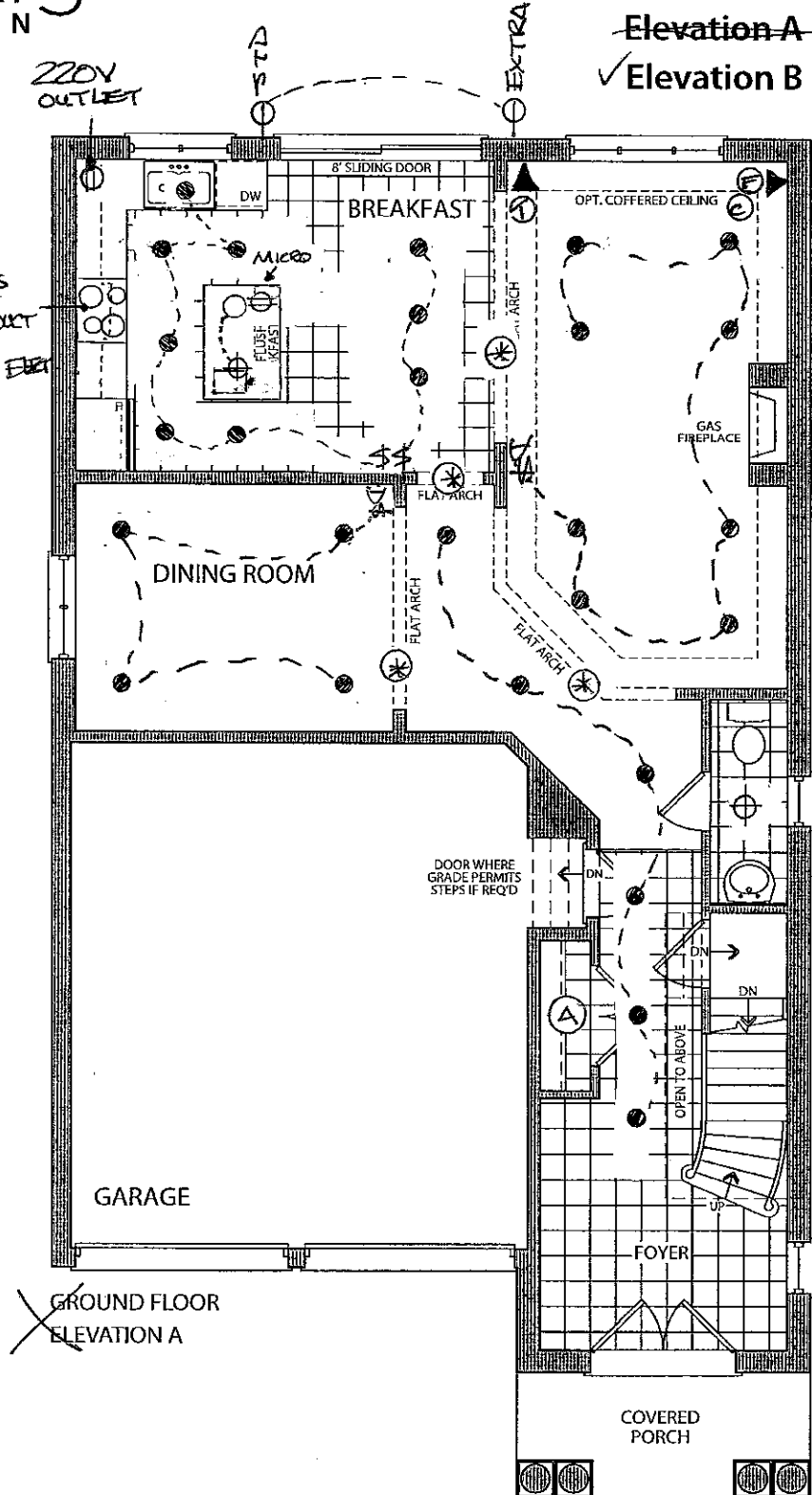
Inv.710	1 - GARAGE TO HOUSE DOOR: Upgrade to 96" door.
Line9574	Note:
28Jul16 / 7Nov16	

Elevation A • 2,388 sq.ft.
 ✓ Elevation B • 2,375 sq.ft.

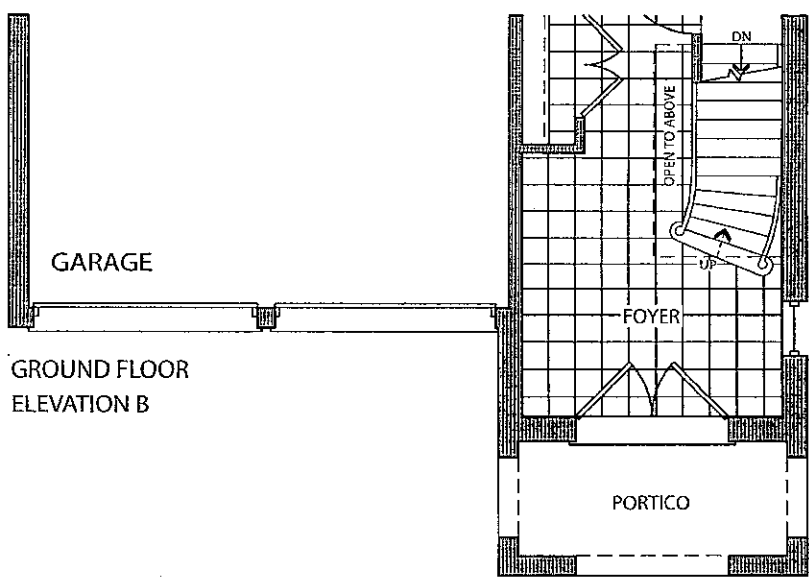
Lot 38
 Aug. 23 2016.

AM *PM*

No PHONE in KITCHEN.
 Re. CENTER STOVE
 GAS + 8' DUCT + DED. EBRT



GROUND FLOOR ELEVATION A



GROUND FLOOR ELEVATION B

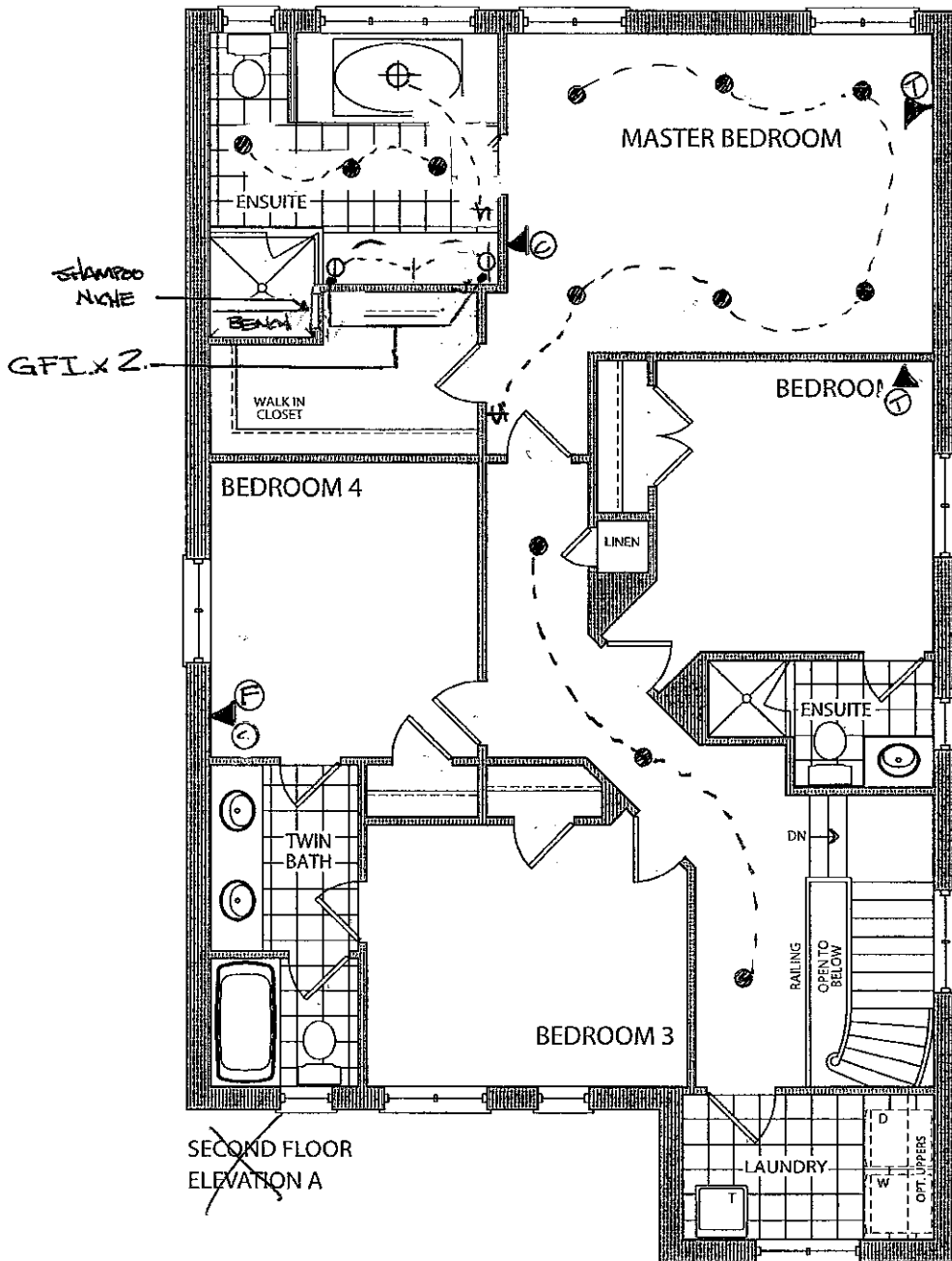
- POTLIGHT
- STD LIGHT
- ⊕ AND ROUGH IN.
- ⊗ 8' ARCH.
- ⊕ SWITCH
- ⊕ DIMMER SWITCH.
- ⊕ ELECT. OUTLET
- ▲ ⊕ PHONE
- ▲ ⊕ CABLE
- ▲ ⊕ FIBER OPTIC
- ⊕ SOURCE.
- Ⓐ AUTO LIGHT

Prices, figures, illustrations, sizes, features and finishes are subject to change without notice. E.&O.E. Areas and dimensions are approximate and actual usable floor space may vary from the stated area. Layout may be reverse of the unit purchased. E. & O.E.

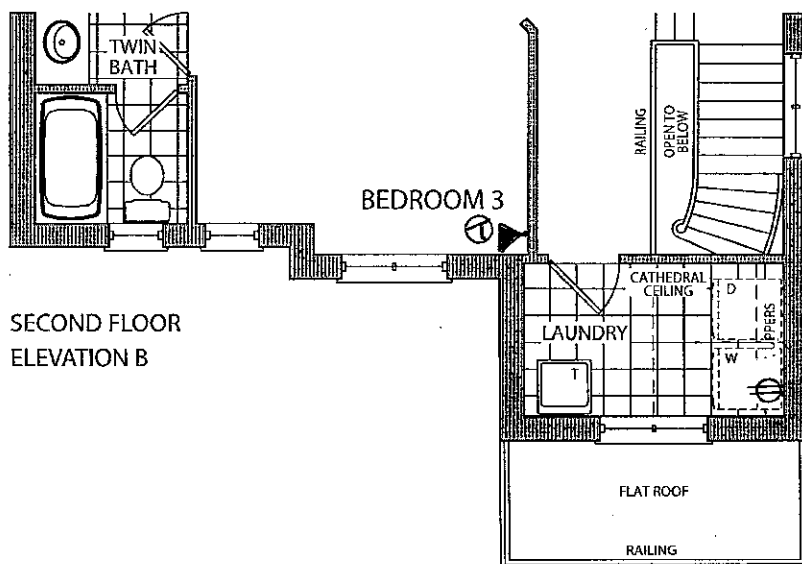
the Hampton

✓ Elevation A • 2,388 sq.ft.

✓ Elevation B • 2,375 sq.ft.



LOT 38
AUG. 23 2016
Am EM

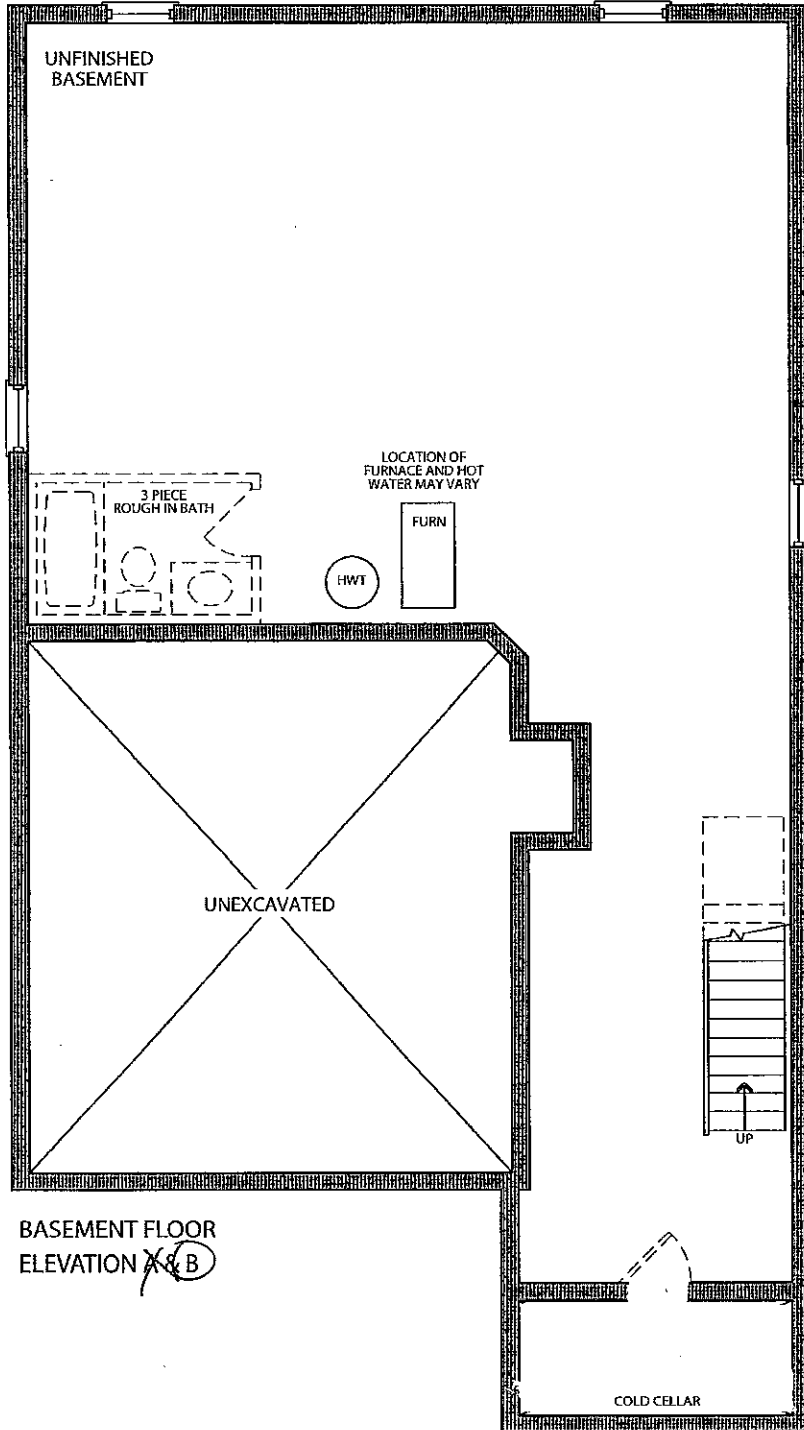


~~Elevation A • 2,388 sq.ft.~~

✓ Elevation B • 2,375 sq.ft.

LOT 38
AUG. 23 2016

Am
Ell



BASEMENT FLOOR
ELEVATION ~~A~~ B

The Harpport

Elevation B • 2,375 sq.ft.

sq.ft.





Stacey Carlete
Project Coordinator



Claude Azzopardi
Contracts Manager



Nancy Martini
Corporate Controller



Model 38.1 The Hampton			
Elevation	Circle One	A	2339.9 Square Feet
		B	2327.8 Square Feet
Taller Ceilings	Circle All that Apply	GFTC	9' Ceilings Ground Floor
		MFTC	10' Ceilings Main Floor
		SFTC	9' Ceilings Second Floor
Optional Layouts	Circle All that Apply		

Model 38.2 The Kingston			
Elevation	Circle One	A	2445.9 Square Feet
		B	2445.9 Square Feet
Taller Ceilings	Circle All that Apply	GFTC	9' Ceilings Ground Floor
		MFTC	10' Ceilings Main Floor
		SFTC	9' Ceilings Second Floor
Optional Layouts	Circle All that Apply	SFA1	SECOND FLOOR Shower in Lieu of Tub (Bedroom 2)

Model 38.3 The Birkdale			
Elevation	Circle One	A	2574.1 Square Feet
		B	2575.5 Square Feet
Taller Ceilings	Circle All that Apply	GFTC	9' Ceilings Ground Floor
		MFTC	10' Ceilings Main Floor
		SFTC	9' Ceilings Second Floor
Optional Layouts	Circle All that Apply	SFA1	SECOND FLOOR Shower in Lieu of Tub (Bedroom 2)

Model 38.4 The Bridgeport			
Elevation	Circle One	A	2723.2 Square Feet
		B	2762.0 Square Feet
Taller Ceilings	Circle All that Apply	GFTC	9' Ceilings Ground Floor
		MFTC	10' Ceilings Main Floor
		SFTC	9' Ceilings Second Floor
Optional Layouts	Circle All that Apply	SFA3	SECOND FLOOR Shower in Lieu of Tub (Twin Bath)

Model 38.5 The Rosemont			
Elevation	Circle One	A	2804.9 Square Feet
		B	2804.5 Square Feet
Taller Ceilings	Circle All that Apply	GFTC	9' Ceilings Ground Floor
		MFTC	10' Ceilings Main Floor
		SFTC	9' Ceilings Second Floor
Optional Layouts	Circle All that Apply	SFA1	SECOND FLOOR Shower in Lieu of Tub (Bedroom 2)
		SFA3	SECOND FLOOR Shower in Lieu of Tub (Twin Bath)
		SFA5	SECOND FLOOR Additional Bedroom

Model 38.6 The Wyndham			
Elevation	Circle One	A	2893.5 Square Feet
		B	2896.0 Square Feet
Taller Ceilings	Circle All that Apply	GFTC	9' Ceilings Ground Floor
		MFTC	10' Ceilings Main Floor
		SFTC	9' Ceilings Second Floor
Optional Layouts	Circle All that Apply	SFA1	SECOND FLOOR Shower in Lieu of Tub (Bedroom 2)
		SFA3	SECOND FLOOR Shower in Lieu of Tub (Twin Bath)
		SFA5	SECOND FLOOR Additional Bedroom



LOT 38



AUGUST 23 2016

Lot 38
hood

Contact Our Experts! (763) 533-5333

Email Us



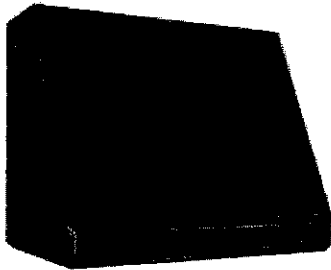
My Account | My Wishlist | My Cart (0) | Checkout

Home / Vent-A-Hood® Emerald Series 30" Wall Mount Range Hood-SLH30-230

Vent-A-Hood® Emerald Series 30" Wall Mount Range Hood-SLH30-230

Be the first to review this product

Call for Best Price



Click on image to zoom

REQUEST A QUOTE ADD TO WISHLIST ADD TO COMPARE

Quick Overview

Vent-A-Hood® Emerald Series 30" Wall Mount Range Hood with 600 CFM magic lung blower and SensaSource® intelligent heat sensor

Features Specifications Documents

Features	Specifications	Documents
Controls		Mechanical
Cubic Feet per Minute		600 CFM
Air Mover(s) Speed		1550
Chimney		Fixed
Depth		24 in.
Duct Size		8 in.
Electrical Requirements		115 V; 60 Hz; 3.9 A
Height		30 in.
Light(s)		Halogen
Max Height Above Cooktop		30 in.
Min Height Above Cooktop		30 in.
Number of Air Movers		1
Number of Lights		2
Positioning		Stationary
Sones (Noise Level) Rating		6.5
Ventilation Installation		Wall Mount
Width		30 in.

Site Map | Privacy Policy

© 2016 BrandSource Digital powered by Tonus Marketing LLC