

Brampton Encore - 51L - 2 - 28-2 Elev.C SIREN  
CONCRETE AND DRAIN

Inv.1,453	1 - ROUGH-IN - 3PC BASEMENT ROUGH-IN
Line22738	Note:
22Jun17 / 30Oct17	

ELECTRICAL

Inv.1,453	1 - TWIN BATHROOM: RELOCATE STANDARD VANITY SCONCE TO APPROX. CENTER ABOVE 1 SINK. SEE PLAN FOR LOCATION
Line22737	Note:
22Jun17 / 30Oct17	

Inv.1,453	1 - KITCHEN: RELOCATE STANDARD CEILING LIGHT TO APPROX. CENTER ABOVE ISLAND.
Line22733	Note: SEE PLAN FOR REVISED ISLAND LOCATION.
22Jun17 / 30Oct17	

Inv.1,453	1 - MASTER ENSUITE: RELOCATE STANDARD VANITY SCONCE TO APPROX. CENTER ABOVE 1 SINK. SEE PLAN FOR LOCATION
Line22736	Note:
22Jun17 / 30Oct17	

Inv.1,453	1 - KITCHEN: ROTATE ISLAND 90* - SEE PLAN FOR LOCATION
Line24558	Note:
22Jun17 / 30Oct17	

Exterior Colours

Inv.1,453	1 - EXTERIOR COLOUR PACKAGE 6
Line24560	Note:
22Jun17 / 30Oct17	

FORMING

Inv.1,453	1 - SIDE DOOR- HOME TO EXTERIOR- AS PER PLAN AND GRADE PERMITTING
Line22734	Note:
22Jun17 / 30Oct17	

KITCHEN AND BATH CABINETRY

Inv.1,453	1 - KITCHEN: ROTATE ISLAND 90* - SEE PLAN FOR LOCATION
Line22732	Note:
22Jun17 / 30Oct17	

MISC.

Inv.1,453	1 - Purchaser has attended an appointment at the Decor Centre & has DECLINED any additional upgrades and accepts and acknowledges that there will be no further changes/additions/deletions to be made upon signing on June 22 2017.
Line22739	Note:
22Jun17 / 30Oct17	

Inv.1,453	1 - Purchasers are aware & accepts that ANY changes made to upgrades after signing this Purchasers Extra Form are subject to a minimum administration fee of \$500. PLUS a 10% holdback fee.
Line22740	Note:
22Jun17 / 30Oct17	

**Brampton Encore - 51L - 2 - 28-2 Elev.C SIREN**

Inv.1,453	1 - BONUS PACKAGE: \$5,000.00 (INCLUDING TAXES) WORTH OF UPGRADES FROM GOLD PARK HOMES DÉCOR CENTRE IS BEING APPLIED TOWARD THE STRUCTURAL APPOINTMENT. PURCHASER HAS A REMAINING AMOUNT OF \$00 (INCLUDING TAXES) TO BE USED TOWARD THE COLOUR APPOINTMENT.
Line22741	Note:
22Jun17 / 30Oct17	

**PLUMBING**

Inv.1,453	1 - KITCHEN: ROTATE ISLAND 90* - SEE PLAN FOR LOCATION
Line24557	Note:
22Jun17 / 30Oct17	

**WINDOWS AND DOORS**

Inv.1,453	1 - SIDE DOOR- HOME TO EXTERIOR- AS PER PLAN AND GRADE PERMITTING
Line24559	Note:
22Jun17 / 30Oct17	

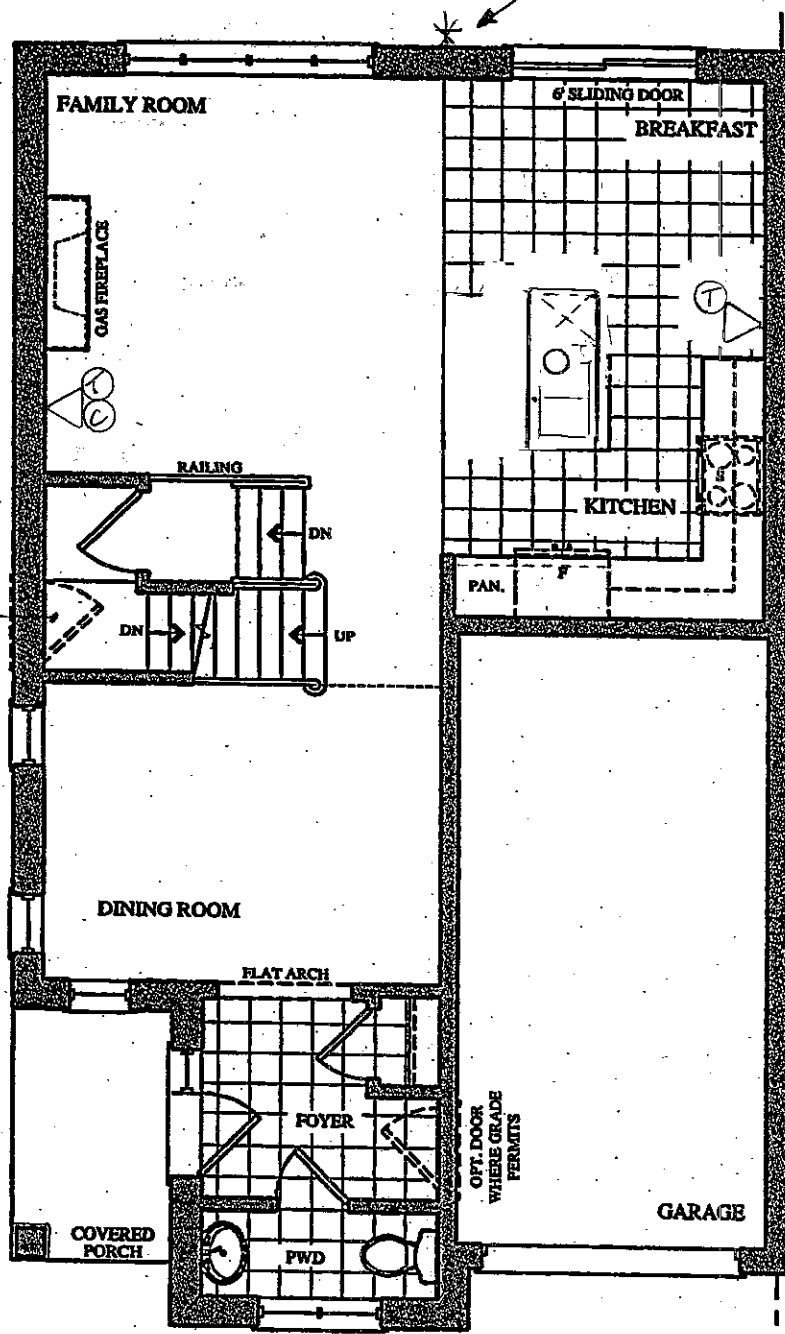
BEZ-SIL. ~~1~~ ~~2~~  
JUNE 22 2017

# The Siren

## SEMI SERIES

Elevation A • 1,688 sq.ft.  
Elevation B • 1,677 sq.ft.  
→ Elevation C • 1,687 sq.ft.

\*REQUEST BBQ  
LOCATION HERE  
if possible

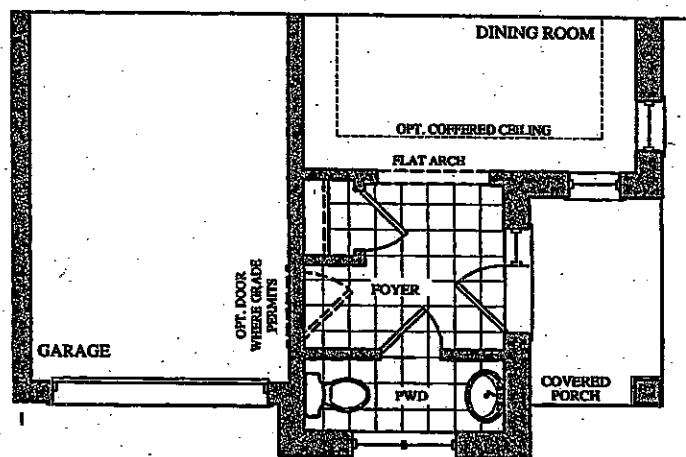


ROTATE  
ISLAND 90°

### LEGEND.

- STD CEILING LIGHT
- ⊕ WALL SCORCE
- △ @ PHONE
- △ @ CABLE

GROUND FLOOR PLAN  
ELEV. 'A' & 'B'



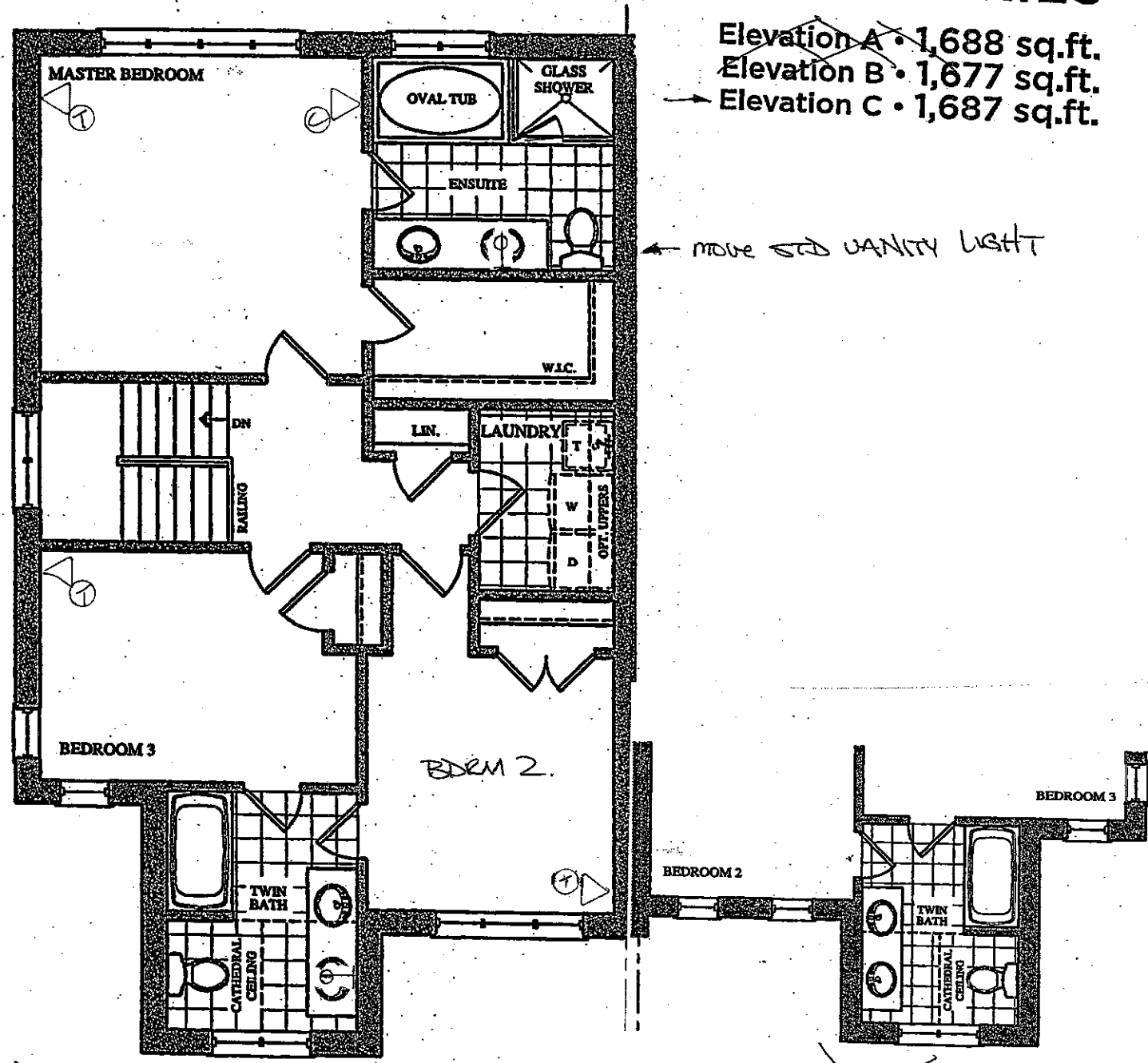
PART. GROUND FLOOR PLAN  
ELEV. 'C'

BE2-51L  
JUNE 22 2017

# The Siren

## SEMI SERIES

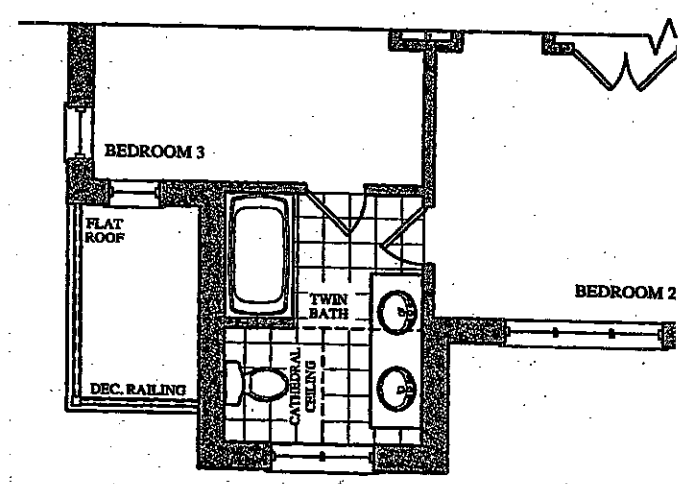
Elevation A • 1,688 sq.ft.  
Elevation B • 1,677 sq.ft.  
Elevation C • 1,687 sq.ft.



~~SECOND FLOOR PLAN~~  
~~ELEV. 'A'~~

↑  
MOVE STD  
VANITY  
LIGHT

~~PART. SECOND FLOOR PLAN~~  
~~ELEV. 'B'~~



PART. SECOND FLOOR PLAN  
ELEV. 'C'

# The Siren

## SEMI SERIES

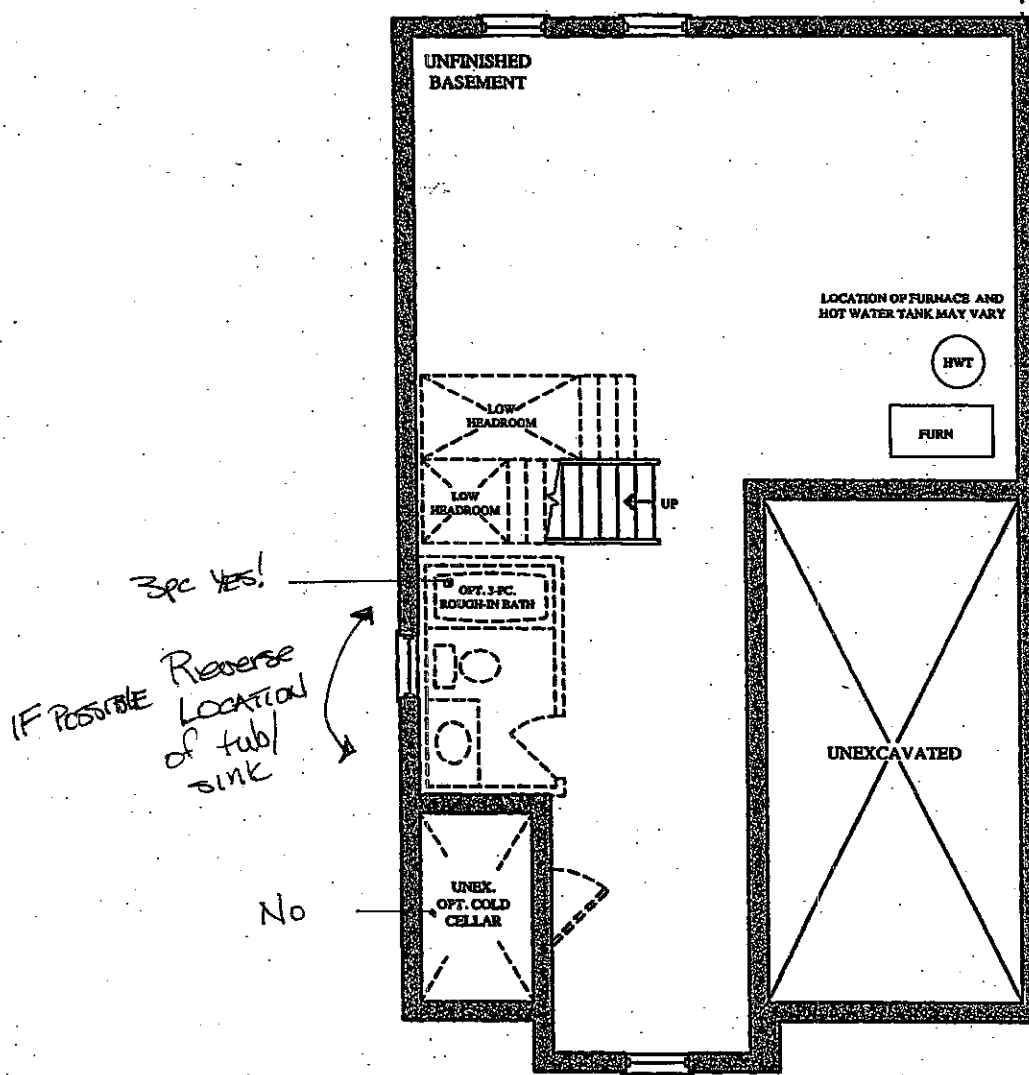
Elevation A • 1,688 sq.ft.

Elevation B • 1,677 sq.ft.

Elevation C • 1,687 sq.ft.

REZ-51L

JUNE 22 2017



BASEMENT FLOOR PLAN  
ELEV. 'A', 'B' & 'C'