



CONSTRUCTION SUMMARY

Lot: 122
Model: 40.02 A VALLEYVIEW
Project/Phase: Pine Valley Forevergreen / 1

APPLIANCES

Invoice	Qty.	Description
2293 10Sep20 NoCat	1	Signed appliance specifications, 36" gas cooktop, 30" single wall oven, 30" built-in micro, 36" built-in fridge/freezer, 27" washer / dryer Reference attached signed appliance specificatins

CROWN MOULDING

Invoice	Qty.	Description
2293 10Sep20 NoCat	1	.GREAT ROOM - OPT. COFFERED CEILING - AS PER PLAN
2293 10Sep20 NoCat	1	.BREAKFAST ROOM OPT. COFFERED CEILING - AS PER PLAN

DRYWALL

Invoice	Qty.	Description
2293 10Sep20 NoCat	1	.GREAT ROOM - OPT. COFFERED CEILING - AS PER PLAN
2293 10Sep20 NoCat	1	.BREAKFAST ROOM OPT. COFFERED CEILING - AS PER PLAN
2293 10Sep20 NoCat	1	.MASTER BEDROOM - OPT. 10 FOOT TRAY CEILING AS PER PLAN
2293 10Sep20 NoCat	2	.MAIN HALL: UPGRADE TO CURVED ARCHWAY (SEE PLAN FOR LOCATIONS)



CONSTRUCTION SUMMARY

Lot: 122
Model: 40.02 A VALLEYVIEW
Project/Phase: Pine Valley Forevergreen / 1

ELECTRICAL

Invoice	Qty.	Description
2293 72,268 10Sep20	1	.GREAT ROOM: INTERIOR WALL OUTLET: 110V WALL INTERIOR RECEPTACLE ON EXISTING CIRCUIT - LOCATE APPROX. 66" A.F.F. ABOVE FIREPLACE OR FUTURE TV
2293 72,307 10Sep20	1	.KITCHEN: FIXTURE: RELOCATE STANDARD CEILING MOUNT FIXTURE LOCATE APPROX CENTER ABOVE ISLAND
2293 72,289 10Sep20	6	.MAIN FLOOR: *GREAT ROOM X 4 POTLIGHTS (WITH SWITCH)* + *DINING ROOM X 2 POTLIGHTS*: 4" E/S LED INTERIOR POT LIGHT - GROUND FLOOR - EACH SEE PLAN FOR LOCATION INCLUDED IN APS
2293 72,272 10Sep20	1	.KITCHEN: 110V WALL RECEPTACLE ON SEPARATE CIRCUIT - FOR MICROWAVE - MICROWAVE NOT INCLUDED
2293 72,282 10Sep20	1	.KITCHEN: ADDITIONAL 220V RECEPTACLE ON A SEPARATE CIRCUIT - FOR BUILT-IN WALL OVEN - APPLIANCE NOT INCLUDED - DOES NOT INCLUDE BREAKER THAT IS TO BE INSTALLED BY LICENSED ELECTRICIAN AND ARRANGED BY HOMEOWNER AFTER CLOSING
2293 72,273 10Sep20	1	.KITCHEN: 110V WALL RECEPTACLE ON SEPARATE CIRCUIT - GAS FIRED COOKTOP- FOR AUX. EQUIPMENT - NOT A STOVE PLUG
2293 72,278 10Sep20	2	.GREAT ROOM + MASTER BEDROOM: UPGRADE TO DIMMER SWITCH FOR CEILING LIGHT
2293 72,303 10Sep20	1	.KITCHEN: FIXTURE: UNDER CABINET FLUORESCENT LIGHT FIXTURES - DOES NOT INCLUDE (AND REQUIRES) LIGHT VALANCE
2293 72,278 10Sep20	1	.DINING ROOM: ADDITIONAL INTERIOR SWITCH FOR POTLIGHTS

EXTERIOR COLOURS

Invoice	Qty.	Description
2293 10Sep20 NoCat	1	EXTERIOR COLOUR PKG # BR.9

FORMING

Invoice	Qty.	Description
2293 72,672 10Sep20	2	.*DO NOT UPGRADE REAR EGRESS BSMT WINDOWS.*



CONSTRUCTION SUMMARY

Lot: 122
Model: 40.02 A VALLEYVIEW
Project/Phase: Pine Valley Forevergreen / 1

FRAMING

Invoice	Qty.	Description
2293 72,385 10Sep20	1	.GREAT ROOM - OPT. COFFERED CEILING - AS PER PLAN
2293 72,384 10Sep20	1	.BREAKFAST ROOM OPT. COFFERED CEILING - AS PER PLAN
2293 72,388 10Sep20	1	.MASTER BEDROOM - OPT. 10 FOOT TRAY CEILING AS PER PLAN
2293 72,372 10Sep20	2	.MAIN HALL: UPGRADE TO CURVED ARCHWAY (SEE PLAN FOR LOCATIONS)

HVAC

Invoice	Qty.	Description
2293 72,224 10Sep20	1	KITCHEN: GAS LINE ROUGH-IN - MAIN FLOOR FOR GAS COOKTOP
2293 10Sep20 NoCat	1	.KITCHEN: INSTALL VAC PAN UNDER KITCHEN SINK

INTERIOR TRIM AND DOORS

Invoice	Qty.	Description
2293 10Sep20 NoCat	1	.GREAT ROOM - OPT. COFFERED CEILING - AS PER PLAN
2293 10Sep20 NoCat	1	.BREAKFAST ROOM OPT. COFFERED CEILING - AS PER PLAN
2293 10Sep20 NoCat	1	.MASTER BEDROOM - OPT. 10 FOOT TRAY CEILING AS PER PLAN
2293 10Sep20 NoCat	2	.MAIN HALL: UPGRADE TO CURVED ARCHWAY (SEE PLAN FOR LOCATIONS)

KITCHEN AND BATH CABINETRY

Invoice	Qty.	Description
2293 10Sep20 NoCat	1	.KITCHEN: INSTALL VAC PAN UNDER KITCHEN SINK



CONSTRUCTION SUMMARY

Lot: 122
Model: 40.02 A VALLEYVIEW
Project/Phase: Pine Valley Forevergreen / 1

NETWORK AND WIRING

Invoice	Qty.	Description
2293 72,256 10Sep20	2	BEDROOM 2 + BEDROOM 3: ADDITIONAL RG6 HIGH SPEED TV OUTLETS - SEE PLAN FOR LOCATION
2293 72,259 10Sep20	1	GREAT ROOM: CONDUIT PIPE - FOR WALL MOUNT TV - LOCATE APPROX. 66" A.F.F. ABOVE FIREPLACE, TERMINATING AT CABLE - SEE PLAN
2293 72,258 10Sep20	1	MASTER BEDROOM: ADDITIONAL CAT6 ETHERNET OUTLET - EACH SEE PLAN FOR LOCATION
2293 72,261 10Sep20	1	KITCHEN: INSTALL VAC PAN UNDER KITCHEN SINK

PAINT

Invoice	Qty.	Description
2293 10Sep20 NoCat	1	.GREAT ROOM - OPT. COFFERED CEILING - AS PER PLAN
2293 10Sep20 NoCat	1	.BREAKFAST ROOM OPT. COFFERED CEILING - AS PER PLAN
2293 10Sep20 NoCat	1	.MASTER BEDROOM - OPT. 10 FOOT TRAY CEILING AS PER PLAN
2293 10Sep20 NoCat	2	.MAIN HALL: UPGRADE TO CURVED ARCHWAY (SEE PLAN FOR LOCATIONS)

PLUMBING

Invoice	Qty.	Description
2293 72,332 10Sep20	1	KITCHEN: ROUGH-IN 1/4" COLD WATER LINE TO FRIDGE

PLUMBING FIXTURES

Invoice	Qty.	Description
2293 10Sep20 NoCat	1	.MASTER ENSUITE: UPGRADE SHOWER SYSTEM TO MOEN `ALIGN` POSI TEMP 3 FUNCTION SHOWER - CHROME RAIN SHOWER (FROM CEILING) + HAND SHOWER #T21193EP/3372/128284/T4191/62320/3887EP/A725



CONSTRUCTION SUMMARY

Lot: 122
Model: 40.02 A VALLEYVIEW
Project/Phase: Pine Valley Forevergreen / 1

WINDOWS - BASEMENT

Invoice	Qty.	Description
2293	1	. *DO NOT UPGRADE REAR EGRESS BSMT WINDOWS.*
10Sep20 NoCat		

36" Gas Cooktop

800 Series – Stainless Steel NGM8657UC



78-122
Sept. 3, 2020



NGM8657UC
Stainless Steel

The stainless steel gas cooktop with FlameSelect® – achieve consistent cooking results thanks to nine precisely defined power levels.

Features & Benefits

FlameSelect® – allows for a precise adjustment of the flame size with nine defined power levels

Dual flame power burner with two heat options, quickly boil water or maintain a precise simmer

Heavy-duty grates can be easily and quickly cleaned in the dishwasher

OptiSim® burner – simmer delicate sauces and melt chocolate without scorching

Low profile stainless steel cooking surface is easily accessible and quick to clean

General Properties	
No. of burners	5
Knob color	Stainless steel appearance
Control location	Front-center
Sealed burners	Yes
Gas valves	Five 9-level step valves
Ignition system	Electric; thermocouple safety control
Cooktop surface material	Stainless steel
Grate material	Cast iron
Grate features	Continuous grates; dishwasher safe
Element Performance	
Total BTU load (NG / LP)	41,400 / 40,100
Power of front left burner (NG / LP) OptiSim®	3,400 / 3,400 BTU
Power of back left burner (NG / LP)	6,000 / 6,000 BTU
Power of center burner (NG / LP) Dual-flame	17,000 / 15,700 BTU
Power of back right burner (NG / LP)	9,000 / 9,000 BTU
Power of front right burner (NG / LP)	6,000 / 6,000 BTU

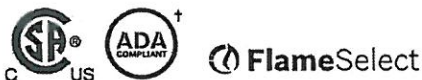
Technical Details	
Circuit breaker	15 A
Volts	120 V
Frequency	60 Hz
Plug type	3-prong
Power cord length	40"
Fuel type	Natural Gas (factory set)
Convertible to LP (kit required)	Yes
Dimensions & Weight	
Overall appliance dimensions (HxWxD)	2 23/64" x 36" x 20 1/2"
Required cutout size (HxWxD)	1 1/4" x 33 1/2" x 19 5/16"
Minimum distance from counter front	1 7/8"
Minimum distance from rear wall	3"
Net weight	42 lbs
Accessories – Included	
Included	LP conversion kit, OptiSim® cap
Accessories – Optional	



HEZ298107
Wok ring



HEZ27754
FlameSelect® 800 Series metal control knob kit, stainless steel



† To be fully ADA compliant, these units must be installed according to ADA guidelines. Please check current ADA requirements for guidance on installation.

Accessories: To purchase Bosch accessories, cleaners & parts please visit www.bosch-home.com/us/store or call 1-800-944-2904 (Mon to Fri 5 am to 6 pm PST, Sat 6 am to 3 pm PST).

Notes: All height, width and depth dimensions are shown in inches. BSH reserves the absolute and unrestricted right to change product materials and specifications, at any time, without notice. Consult the product's installation instructions for final dimensional data and other details prior to making cutout.

Warranties: Please see Use & Care manual or Bosch website for statement of limited warranty.

For more information on our entire line of products, go to www.bosch-home.com/us or call 1-800-944-2904

© BSH Home Appliances Corporation. All rights reserved. Bosch is a registered trademark of Robert Bosch GmbH.

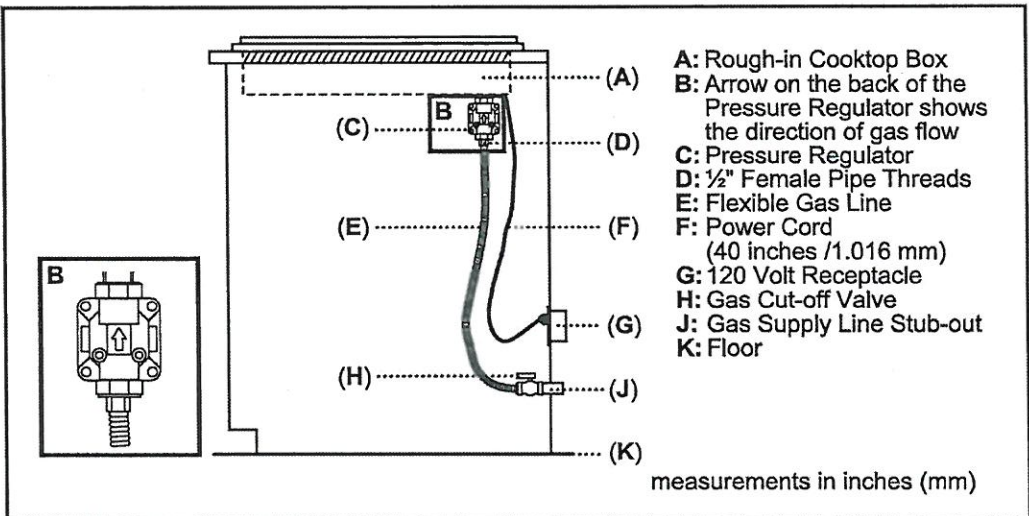
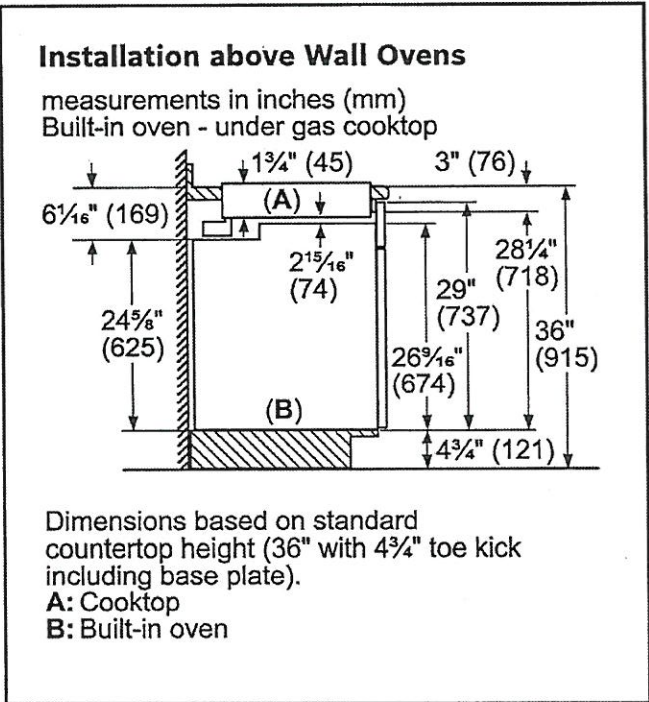
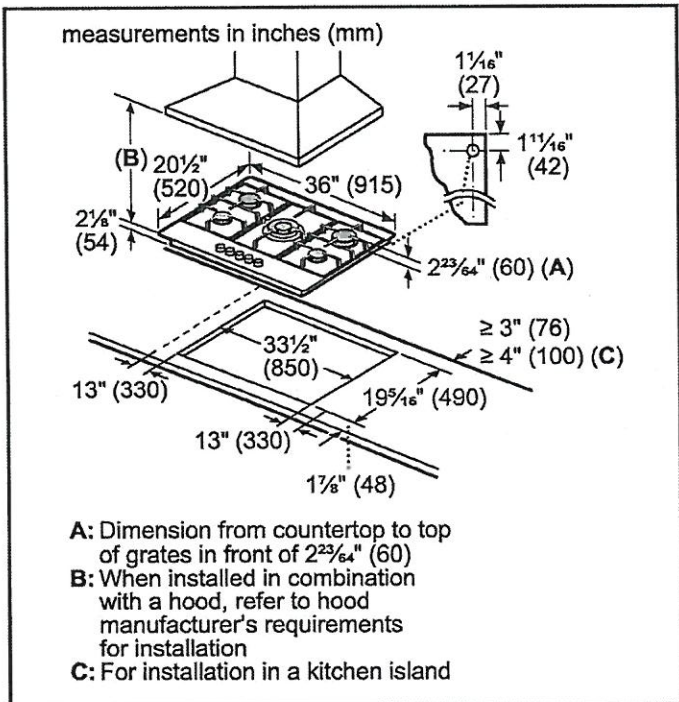
36" Gas Cooktop

800 Series – Stainless Steel NGM8657UC



PV-122
Sept. 3, 2020

Installation Details



Accessories: To purchase Bosch accessories, cleaners & parts please visit www.bosch-home.com/us/store or call 1-800-944-2904 (Mon to Fri 5 am to 6 pm PST, Sat 6 am to 3 pm PST).

Notes: All height, width and depth dimensions are shown in inches. BSH reserves the absolute and unrestricted right to change product materials and specifications, at any time, without notice. Consult the product's installation instructions for final dimensional data and other details prior to making cutout.

Warranties: Please see Use & Care manual or Bosch website for statement of limited warranty.

For more information on our entire line of products, go to www.bosch-home.com/us or call 1-800-944-2904

© BSH Home Appliances Corporation. All rights reserved. Bosch is a registered trademark of Robert Bosch GmbH.

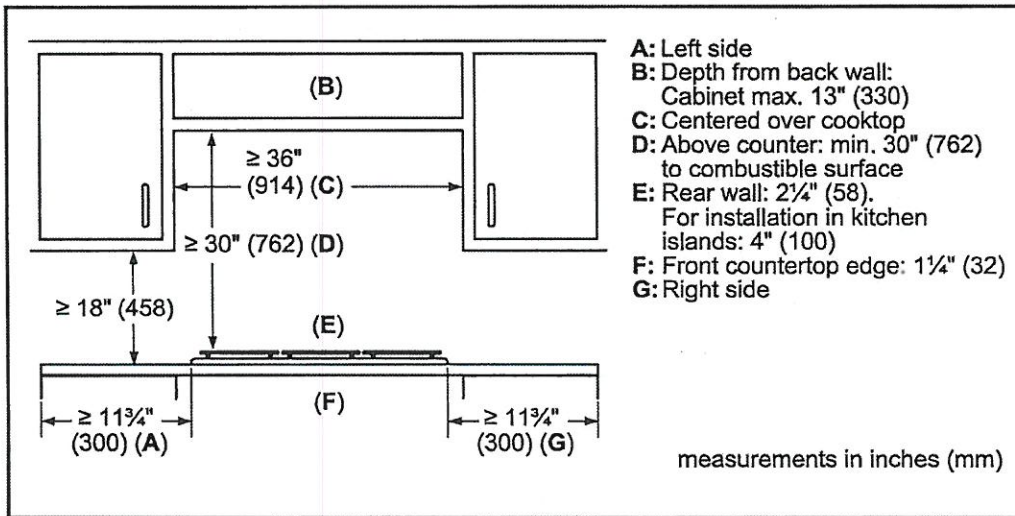
36" Gas Cooktop

800 Series – Stainless Steel NGM8657UC



Sept. 3, 2020.

Installation Details



Accessories: To purchase Bosch accessories, cleaners & parts please visit www.bosch-home.com/us/store or call 1-800-944-2904 (Mon to Fri 5 am to 6 pm PST, Sat 6 am to 3 pm PST).

Notes: All height, width and depth dimensions are shown in inches. BSH reserves the absolute and unrestricted right to change product materials and specifications, at any time, without notice. Consult the product's installation instructions for final dimensional data and other details prior to making cutout.

Warranties: Please see Use & Care manual or Bosch website for statement of limited warranty.

For more information on our entire line of products, go to www.bosch-home.com/us or call 1-800-944-2904

© BSH Home Appliances Corporation. All rights reserved. Bosch is a registered trademark of Robert Bosch GmbH.

36" Gas Cooktop

800 Series – Stainless Steel NGM8657UC

PV-122 Sept. 3, 2020.



Bosch Cooktop over Built-In Oven Approved Combination Guide

The following **OVENS, COOKTOPS AND DRAWERS** are approved to be installed in combination and the installation has been certified by CSA.

Built-in ovens		Cooktops		
Conventional ovens (1)	Steam ovens	Induction	Electric	Gas (1) *
HBL5351UC, HBL5354UC	HSLP451UC, HSLP454UC	NIT5068UC	NET8068UC	NGM8046UC
HBL5451UC, HBL5344UC		NIT5668UC, NIT5469UC	NET8068SUC	NGM5656UC
HBL8443UC, HBL5454UC		NIT8068UC, NIT8068SUC	NET8668UC	NGMP656UC
HBL8453UC, HBL8444UC		NIT8668UC, NIT8668SUC	NET8668SUC	NGM8656UC
HBL8451UC, HBL8444LUC		NITP068UC, NITP068SUC	NETP068SUC	NGM8646UC
HBL8463UC, HBL8444RUC		NITP668UC, NITP668SUC	NETP668SUC	NGM5656UC
HBL8461UC, HBL8454UC		NIT8069UC, NIT8069SUC	NEM5066UC	NGMP056UC
HBL8442UC, HBLP454UC		NIT8669UC, NIT8669SUC	NEM5666UC	NGM8056UC
HBLP451UC, HBLP454LUC		NITP069UC, NITP069SUC		Gas (2) *
HBLP451LUC, HBLP454RUC		NITP669UC, NITP669SUC		NGM5456UC
HBLP451RUC, HBN8454UC				Gas (3) *
HBN5451UC, HBN8451UC				NGMP077UC
Conventional ovens (2)				NGMP677UC
HBE5451UC				NGM8657UC
Conventional ovens (3)				NGM8057UC
HBE5452UC				

The following **OVENS, COOKTOPS AND DRAWERS** are approved by BSH Home Appliances Corporation to be installed in combination. These products, identified in the table below, may be installed in combination. The suitability of the combination has not been evaluated by CSA.

Built-in ovens		Cooktops		
Conventional ovens (2)	Speed oven (1)	Induction (1)	Electric (1)	Gas (1) *
HBE5453UC	HMCP0252UC, HMCP0254UC	NIT5068UC	NET8068UC	NGM8046UC
Built-In microwave	HMC80242UC, HMC80244UC	NIT5668UC, NIT5469UC	NET8068SUC	NGM5656UC
HMB57152UC	HMC80252UC, HMC80254UC	NIT8068UC, NIT8068SUC	NET8668UC	NGMP656UC
HMB50162UC	HMC87152UC, HMC87154UC	NIT8668UC, NIT8668SUC	NET8668SUC	NGM8656UC
HMB50152UC	HMC80152UC, HMC50154UC	NITP068UC, NITP068SUC	NETP068SUC	NGM8646UC
HMB87154UC		NITP668UC, NITP668SUC	NETP668SUC	NGM5656UC
HMB50154UC		NIT8069UC, NIT8069SUC	NEM5066UC	NGMP056UC
Storage drawer	Speed oven (2)	NIT8669UC, NIT8669SUC	NEM5666UC	NGM8056UC
HSD5051UC	HMC54151UC	NITP069UC, NITP069SUC		Gas (2) *
Drawer microwave	HMC54152UC	NITP669UC, NITP669SUC		NGM5456UC
HMD8053UC	HMC54154UC			Gas (3) *
HMD8451UC				NGMP077UC
Warming drawers				NGMP677UC
HWD5051UC				NGM8657UC
HWD5751UC				NGM8057UC

*Gas cooktops may require a 3/8" street elbow (not provided) at the regulator outlet for installation above built-in oven.
COOKTOPS that are not listed above must be approved under local codes and/or by the local authority having jurisdiction.
Please note: For the latest updates to the approved oven/cooktop combination refer to the website listed in your appliance's installation instructions.

Accessories: To purchase Bosch accessories, cleaners & parts please visit www.bosch-home.com/us/store or call 1-800-944-2904 (Mon to Fri 5 am to 6 pm PST, Sat 6 am to 3 pm PST).
Notes: All height, width and depth dimensions are shown in inches. BSH reserves the absolute and unrestricted right to change product materials and specifications, at any time, without notice. Consult the product's installation instructions for final dimensional data and other details prior to making cutout.
Warranties: Please see Use & Care manual or Bosch website for statement of limited warranty.
For more information on our entire line of products, go to www.bosch-home.com/us or call 1-800-944-2904
© BSH Home Appliances Corporation. All rights reserved. Bosch is a registered trademark of Robert Bosch GmbH.

36" Gas Cooktop

800 Series – Stainless Steel NGM8657UC



PR-122
Sept. 3, 2020.

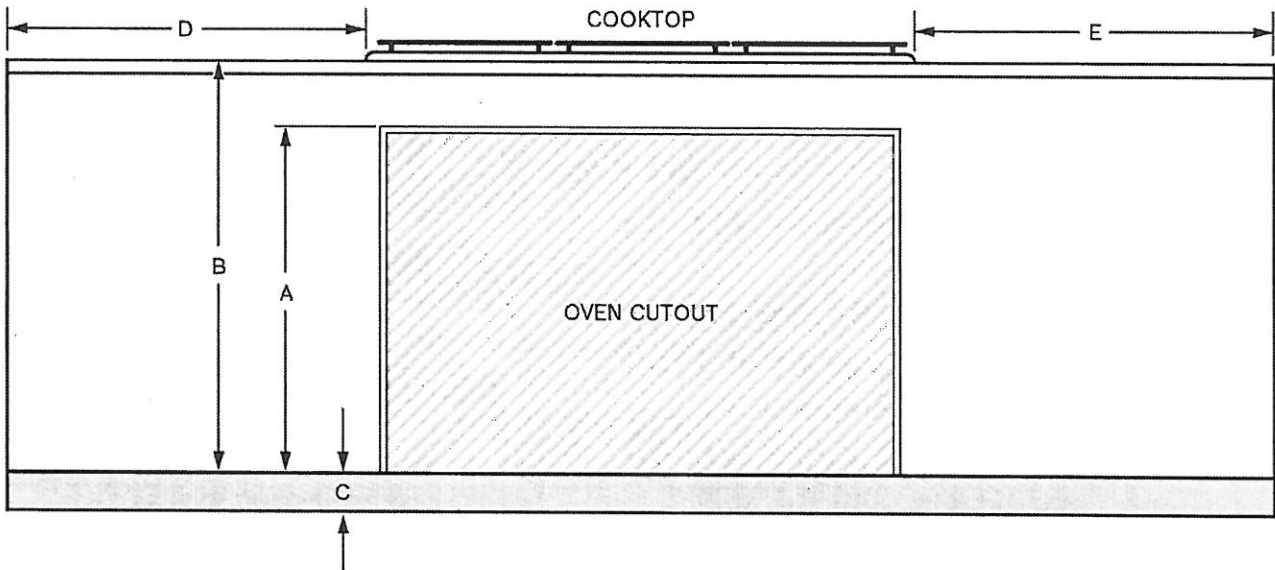


BOSCH
Invented for life

Cooktop over built-in oven combination installation

Refer to the product installation guide for all other measurements.

Oven installation requirements				Cooktop installation requirements (wall spacing)				
When installing an oven or oven with a drawer in combination with a cooktop, a minimum distance between the cabinet floor and countertop (B) is required. Reference the table for dimensions. Refer to the oven installation guide for all other measurements.								
Oven type	A Inches (mm)	B min. Inches (mm)	C max. Inches (mm)	Gas cooktop (1) min. Inches (mm)	Gas cooktop (2) min. Inches (mm)	Gas cooktop (3) min. Inches (mm)	Electric cooktop	Induction cooktop
Conventional oven (1)	28 1/4 (718)	31 1/4 (794)	4 3/4 (121)	D: 24 (610) E: 24 (610)	D: 3 (76) E: 4 (102)	D: 24 (610) E: 24 (610)	Reference Product Installation Instructions	
Conventional oven (2)	23 (584)	27 3/4 (705)	8 1/4 (210)	D: 24 (610) E: 24 (610)	D: 3 (76) E: 4 (102)	D: 24 (610) E: 24 (610)	Reference Product Installation Instructions	
Conventional oven (3)	23 1/16 (585)	27 13/16 (707)	8 3/16 (208)	D: 24 (610) E: 24 (610)	D: 3 (76) E: 4 (102)	D: 24 (610) E: 24 (610)	Reference Product Installation Instructions	
Steam oven	19 1/4 (488)	23 3/8 (594)	12 5/8 (321)	D: 24 (610) E: 24 (610)	D: 3 (76) E: 4 (102)	D: 24 (610) E: 24 (610)	Reference Product Installation Instructions	
Steam oven with 4" storage drawer								
Speed oven (2)	17 3/4 (450)	22 1/2 (572)	13 1/2 (343)	D: 24 (610) E: 24 (610)	D: 3 (76) E: 4 (102)	Reference Product Installation Instructions		
Microwave speed oven (1)	19 1/4 (488)	24 (609)	12 (306)	D: 24 (610) E: 24 (610)	D: 3 (76) E: 4 (102)	Reference Product Installation Instructions		
Microwave speed oven (1) with warming drawer	28 1/4 (718)	31 1/4 (794)	4 3/4 (121)	D: 24 (610) E: 24 (610)	D: 3 (76) E: 4 (102)	Reference Product Installation Instructions		
Drawer microwave	14 13/16 (376)	20 (508)	16 (406)	D: 24 (610) E: 24 (610)	D: 3 (76) E: 4 (102)	Reference Product Installation Instructions		



Accessories: To purchase Bosch accessories, cleaners & parts please visit www.bosch-home.com/us/store or call 1-800-944-2904 (Mon to Fri 5 am to 6 pm PST, Sat 6 am to 3 pm PST).

Notes: All height, width and depth dimensions are shown in inches. BSH reserves the absolute and unrestricted right to change product materials and specifications, at any time, without notice. Consult the product's installation instructions for final dimensional data and other details prior to making cutout.

Warranties: Please see Use & Care manual or Bosch website for statement of limited warranty.

For more information on our entire line of products, go to www.bosch-home.com/us or call 1-800-944-2904

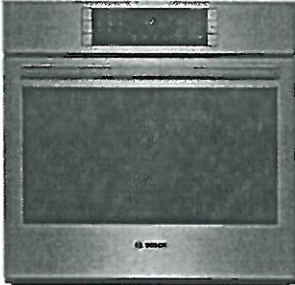
© BSH Home Appliances Corporation. All rights reserved. Bosch is a registered trademark of Robert Bosch GmbH.

30" Single Wall Oven

800 Series – Stainless Steel HBL8453UC



RV-122
Sept. 3, 2020



HBL8453UC
Stainless Steel

Also available in:
Black HBL8463UC
Black Stainless HBL8443UC
Steel

Using Genuine European Convection Roast, you can create a juicy, tender roast up to 25% faster than non-convection modes.

Features & Benefits

Get the oven up to temperature in less time using Fast Preheat™, so meals are ready sooner.

Whether cooking poultry, beef or pork, use the Temperature Meat Probe to monitor the internal temperature and get perfect results every time.

Serve dinner on time with tools like an oven timer, delay cook feature, and digital kitchen timer.

Oven is equipped with a self-cleaning cycle that easily cleans itself via 2, 3, and 4 hour cycle options.

Download the Home Connect app to remotely monitor and control your Bosch wall oven with your smart phone or tablet.

General Properties	
Home Connect™ (WiFi enabled)	Yes
Oven modes	Bake, Variable Broil (hi & low), Roast, Warm, Sabbath, Proof Dough, Convection Bake, Convection Broil, Convection Roast, Pizza, Multi Rack Genuine European Convection, Convection Conversion, Temperature Probe, Fast Preheat

Cleaning type	Self Clean
Telescopic rack	1
Illumination type	Incandescent
Interior lights	2

Oven Performance	
Bake / broil element wattages	2,400 / 3,800 W
Convection element wattages	2,000 W

Technical Details	
Watts (W)	6,325 W
Circuit breaker (A)	30 A
Volts (V)	240 / 208 V
Frequency (Hz)	60 Hz
Power cord length (in)	50"
Plug type	Fixed Connection, No Plug
Energy source	Electric

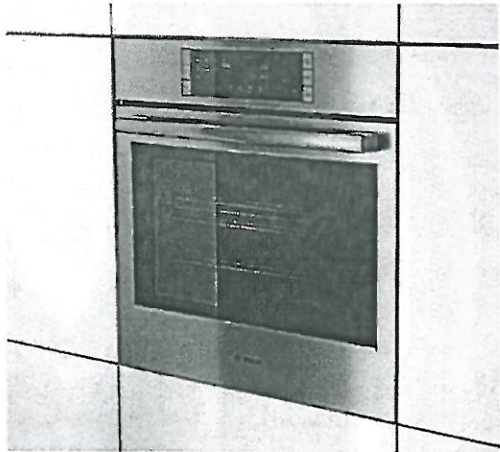
Dimensions & Weight	
Overall appliance dimensions (HxWxD)(in)	29" x 29 3/4" x 24 1/2"
Required cutout size (HxWxD) (in)	27" – 28 5/8" x 28 1/2" x 23 1/2"
Oven cavity size (cu. ft.)	4.6
Overall oven interior dimensions (HxWxD) (in)	17 13/16" x 24 1/8" x 18"
Usable oven interior dimensions (HxWxD) (in)	12 1/4" x 23 1/4" x 15 1/4"
Net weight (lbs)	149 lbs

Accessories – Included	
Included	1 Telescopic and 2 Standard Oven Racks, Temperature Probe

Accessories – Optional



HEZTR301
30" Telescopic Rack



Accessories: To purchase Bosch accessories, cleaners & parts please visit www.bosch-home.com/us/store or call 1-800-944-2904 (Mon to Fri 5 am to 6 pm PST, Sat 6 am to 3 pm PST).
Notes: All height, width and depth dimensions are shown in inches. BSH reserves the absolute and unrestricted right to change product materials and specifications, at any time, without notice. Consult the product's installation instructions for final dimensional data and other details prior to making cutout.
Warranties: Please see Use & Care manual or Bosch website for statement of limited warranty.
For more information on our entire line of products, go to www.bosch-home.com/us or call 1-800-944-2904
© BSH Home Appliances Corporation. All rights reserved. Bosch is a registered trademark of Robert Bosch GmbH.

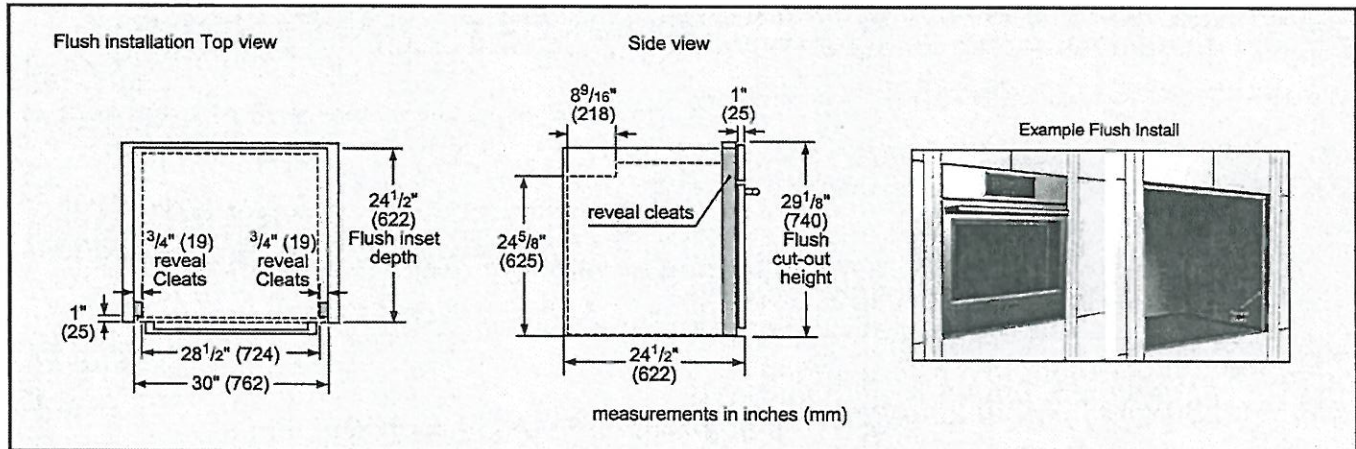
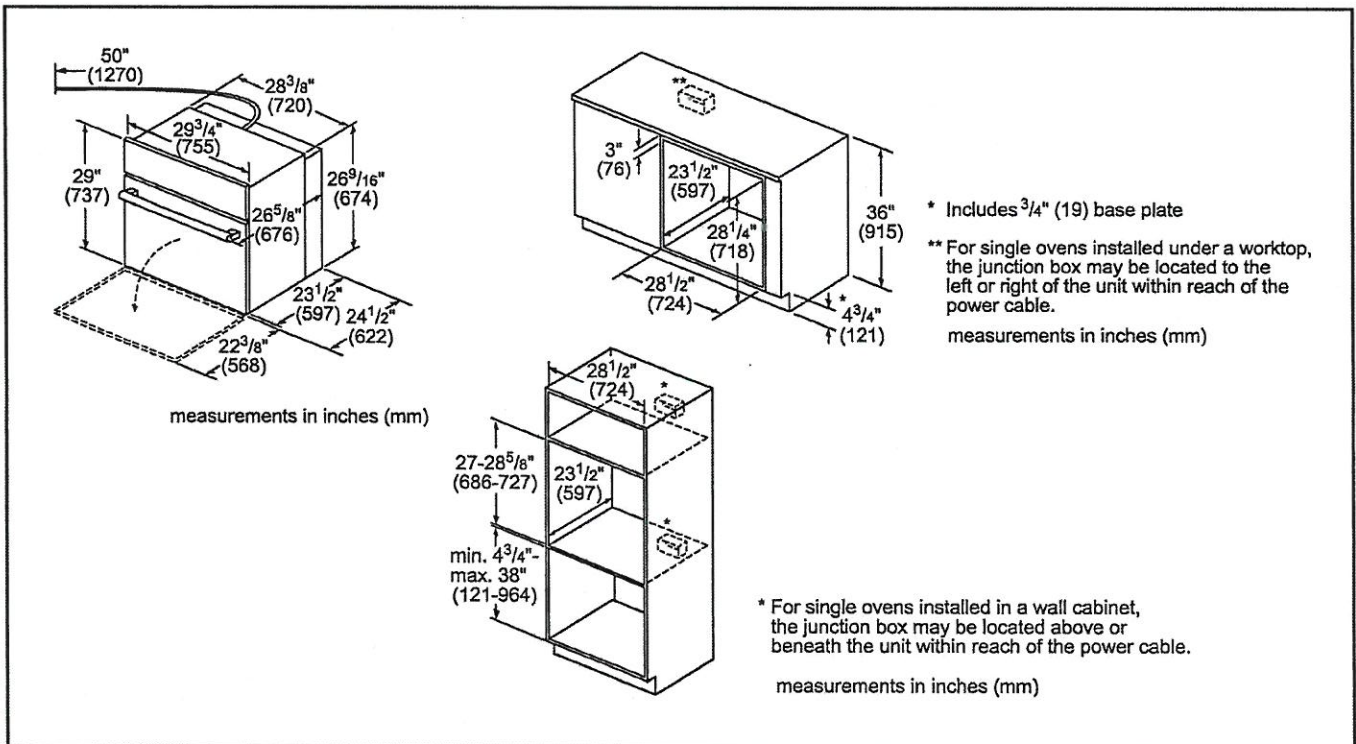
30" Single Wall Oven

800 Series – Stainless Steel HBL8453UC



PR-1ZZ
Sept. 3, 2020

Installation Details



Accessories: To purchase Bosch accessories, cleaners & parts please visit www.bosch-home.com/us/store or call 1-800-944-2904 (Mon to Fri 5 am to 6 pm PST, Sat 6 am to 3 pm PST).

Notes: All height, width and depth dimensions are shown in inches. BSH reserves the absolute and unrestricted right to change product materials and specifications, at any time, without notice. Consult the product's installation instructions for final dimensional data and other details prior to making cutout.

Warranties: Please see Use & Care manual or Bosch website for statement of limited warranty.

For more information on our entire line of products, go to www.bosch-home.com/us or call 1-800-944-2904

© BSH Home Appliances Corporation. All rights reserved. Bosch is a registered trademark of Robert Bosch GmbH.

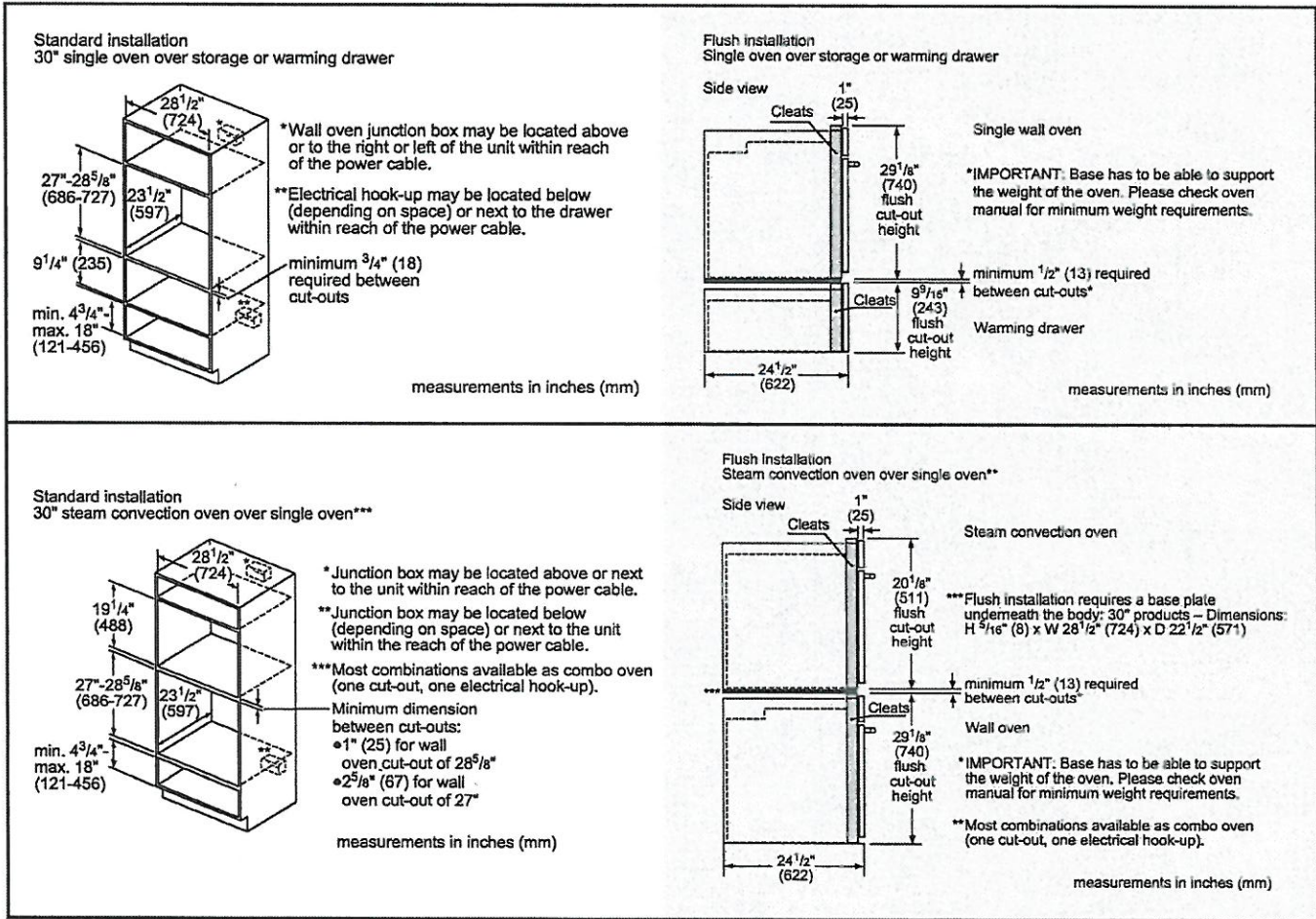
30" Single Wall Oven

800 Series – Stainless Steel HBL8453UC



PR-122
Sept. 3, 2020

Installation Details



Accessories: To purchase Bosch accessories, cleaners & parts please visit www.bosch-home.com/us/store or call 1-800-944-2904 (Mon to Fri 5 am to 6 pm PST, Sat 6 am to 3 pm PST).

Notes: All height, width and depth dimensions are shown in inches. BSH reserves the absolute and unrestricted right to change product materials and specifications, at any time, without notice. Consult the product's installation instructions for final dimensional data and other details prior to making cutout.

Warranties: Please see Use & Care manual or Bosch website for statement of limited warranty.

For more information on our entire line of products, go to www.bosch-home.com/us or call 1-800-944-2904

© BSH Home Appliances Corporation. All rights reserved. Bosch is a registered trademark of Robert Bosch GmbH.



PR-122
Sept. 3, 2020



BOSCH

Microwaves

HMC80252UC 30" Speed Microwave Oven 800 Series - Stainless Steel



The Speed Microwave Oven Pairs the Cooking Qualities of a Conventional Oven with the Speed of Microwave Technology

- SpeedChef™ Cooking Cycles Offer Faster Cooking Times for your Convenience
- Flush Install Matches Bosch Wall Oven, Steam Oven, or Warming Drawer
- 2-in-1 Microwave and Convection Oven for a Variety of Cooking Options
- 30" Width Can be Installed in Horizontal and Vertical Configuration
- Electrical Connection - 240 Volt Direct Wire

Technical Data

Max. Microwave power (W) :	1000
Number of Power Levels :	10
Turntable :	Yes
Turntable diameter (in) :	14 1/8"
Turntable diameter (mm) :	360
Heating type :	Combi microwave
constant, Half width variable grill, Hot Air, Microwave, warming	
Cavity material :	Stainless steel
Door opening :	Handle
Clock / Timer :	Yes
Included accessories :	1 x grid high, 1 x grid flat
UPC code :	825225924166
Product color :	Stainless steel
Watts (W) :	3840
Current (A) :	16
Volts (V) :	240
Frequency (Hz) :	60
Approval certificates :	CUL, UL
Power cord length (in) :	48
Power cord length (cm) :	122
Plug type :	fixed connection
Required cutout size (HxWxD) (in) :	19 1/4" x 28 1/2" x 22
Required cutout size (HxWxD) (mm) :	488 x 724 x 560
Overall appliance dimensions (HxWxD) (in) :	19 5/8" x 29 3/4" x 21 3/8"
Overall appliance dimensions (HxWxD) (mm) :	498 x 755 x 543
Product packaging dimensions (HxWxD) (in) :	23.62 x 26.29 x 33.85
Net weight (lbs) :	86
Net weight (kg) :	39.0
Gross weight (lbs) :	96
Gross weight (kg) :	44.0

Included accessories

1 x grid high
1 x grid flat



PV-122
Sept. 3, 2020.

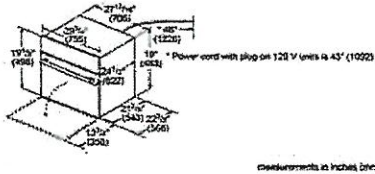


BOSCH

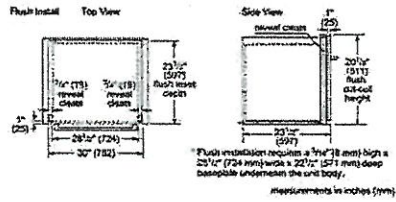
Microwaves

HMC80252UC

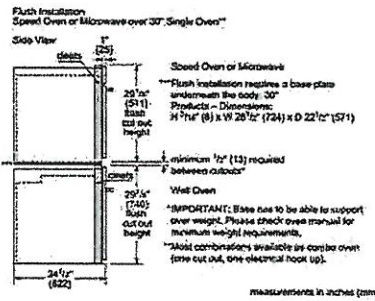
30" Speed Microwave Oven
800 Series - Stainless Steel



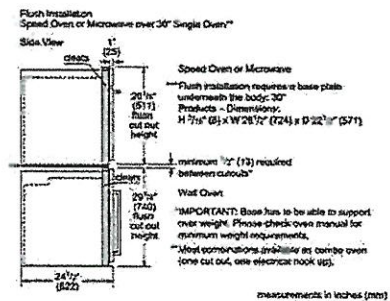
measurements in inches (mm)



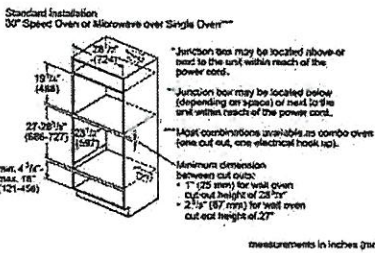
measurements in inches (mm)



measurements in inches (mm)



measurements in inches (mm)



measurements in inches (mm)



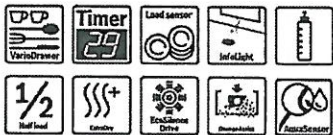
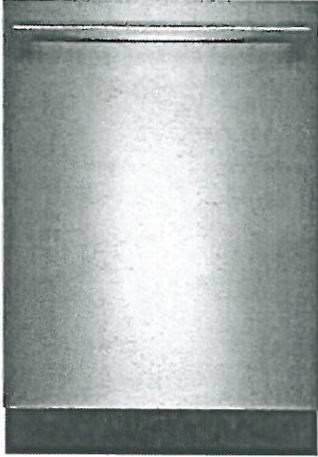
PV-122
Sept. 3, 2020



BOSCH

Dishwashers

24" Bar Handle Dishwasher 300 Series- Stainless steel SHXM63W55N



The 3rd rack provides the perfect space for silverware and large utensils while its V shape leaves room below for taller items.

- **44 dBA:** Quietest dishwasher brand.
- A 3rd rack adds versatility and offers 30% more loading capacity.
- **FlexSpace™** Tines fold back to fit your larger pots & pans.
- **RackMatic®** offers 3 height levels, for 9 possible rack positions.
- **Speed60®** gets your dishes from dirty to dry in about an hour.

Technical Data

Upper Rack :	500
Adjustable upper rack :	Rackmatic 3-stage
Upper rack cup shelf :	2
Lower Rack :	500
3rd Rack :	3rd Rack 1.0
Silverware Basket :	Standard
Accessories Parts :	no
Optional accessories :	
SGZ1010UC, SMZ4000UC, SMZ5000, SMZPC002UC	
UPC code :	825225922483
Variant color :	Stainless steel
Panel ready :	No
Silence level (dBA) :	44
Watts (W) :	1300
Current (A) :	12
Volts (V) :	120
Frequency (Hz) :	60
Energy Consumption (kWh/yr) :	269
Energy Star® qualified :	Yes
Plug type :	fixed connection
Required cutout size (HxWxD) (in) :	x 33 7/8 " x 23 9/16 "
Required cutout size (HxWxD) (mm) :	860-890 x 610 x 610
Overall appliance dimensions (HxWxD) (in) :	
33 7/8 " x 23 9/16 " x 23 3/4 "	
Power cord length (in) :	43 1/2"
Power cord length (cm) :	110
Length outlet hose (in) :	67 "
Length outlet hose (cm) :	175
Product packaging dimensions (HxWxD) (in) :	35 3/4" x 26" x 29 5/16"
Tub material :	Stainless steel
Tub type :	TallTub
ADA Compliant :	No
Number of place settings :	16

Optional accessories

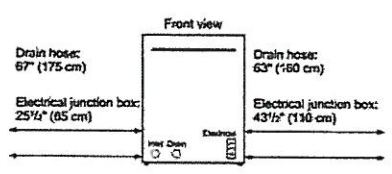
SGZ1010UC : Drain hose extension kit
SMZ4000UC : silverware basket US Duo
SMZ5000 : Dishwashing aid set
SMZPC002UC : Powercord with cold plug

Dishwashers

24" Bar Handle Dishwasher
300 Series- Stainless steel
SHXM63W55N



PR-122
Sept. 3, 2020.



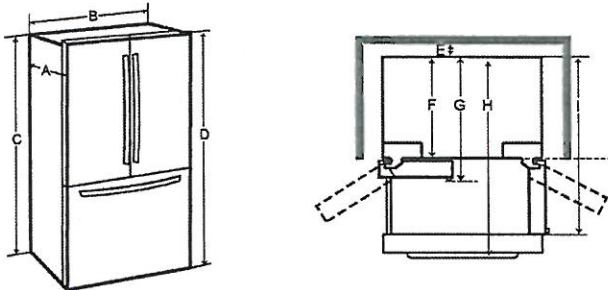
All connections are at the rear of the appliance.
Extension for drain hose available as accessory.
Power cord for connection to electrical outlet (3-prong plug) available as accessory.

Fridge: LG LRFVC2406S

Dimensions and Clearances

- Check the dimensions of the appliance and the installation path to ensure there is sufficient room to move the refrigerator through doors or narrow openings.
- If an opening is too narrow to fit the refrigerator through, remove the refrigerator doors. See Removing/Assembling the Doors and Drawers in this manual.
- The installation location chosen for the refrigerator should allow space behind the unit for connections and airflow and space in front to open the doors and drawers.
- Too small of a distance from adjacent items may result in lowered freezing capability and increased electricity consumption charges. Allow at least 24 inches (610 mm) in front of the refrigerator to open the doors, and at least 2 inches (50.8 mm) between the back of the refrigerator and the wall.

ENGLISH



	Dimension/Clearance	LRFVS3006*/LRFDS3006*/ LRFDS3016*	LRFVC2406*/ LRFXC2406*/ LRFXC2416*/ LRFDC2406*
A	Depth without Handle	34 1/8" (866 mm)	28 1/4" (718 mm)
B	Width	35 3/4" (908 mm)	35 3/4" (908 mm)
C	Height to Top of Case	68 7/8" (1750 mm)	68 7/8" (1750 mm)
D	Height to Top of Hinge	70 1/4" (1785 mm)	70 1/4" (1785 mm)
E	Back Clearance	2" (50 mm)	2" (50 mm)
F	Depth without Door	29 7/8" (758 mm)	24" (610 mm)
G	Depth with Handle	36 5/8" (929 mm)	30 3/4" (781 mm)
H	Depth (Total with Freezer Drawer Open)	57 23/32" (1466 mm)	47 1/4" (1200 mm)
I	Depth (Total with Door Open 90°)	42 5/8" (1231 mm)	42 5/8" (1083 mm)

BR

PV-122
September 3 2020

8/31/2020

PV-122
September 3, 2020



SUMMARY

Series	LG
Type	French Door
Door Type	3- Door
InstaView™ Door-in-Door®	Yes
Door-In-Door® with ColdSaver™ Panel	Yes
Counter Depth	Yes
Total Capacity (cu.ft.)	23.30
Color	PrintProof™ Stainless Steel

CAPACITY

Refrigerator (cu.ft.)	15.40
Freezer (cu.ft.)	8.10
Total Capacity (cu.ft.)	23.50

ENERGY

Energy Consumption (kWh/Year)	717
ENERGY STAR® Qualified	Yes

WATER & ICE SYSTEM

Ice & Water Dispenser	Yes
-----------------------	-----

PV-122
September 3, 2020

Dispenser Type	Integrated Ice & Water Dispenser
Measure Fill	Yes
Daily Ice Production (lbs)	3.5 lbs
IcePlus™ Production (lbs)	3.8 lbs
Craft Ice™ Daily Ice Production	0.4 lbs
Ice Storage Capacity (lbs)	3.0 lbs + 3.3 lbs
Ice System	Slim SpacePlus®
Dual Ice	Yes
Dispenser Light	Yes
Water Filter	LT1000P

COOLING

Linear Compressor	Yes
Smart Cooling Plus™ System	Yes
Door Cooling+	Yes
Temperature Sensors	9
Fresh Air Filter	Yes
Evaporator	2

CONVENIENCE

Display Type	Slim SpacePlus®
--------------	-----------------

8/31/2020

PR-122
September 3, 2020



Temperature Controls	Electronic/Digital
Door Alarm	Yes
Child Lock	Yes
Auto Closing Door Hinge	Yes
ADA Compliant	Yes
Sabbath Mode	Yes
LoDecibel™ Quiet Operation	Yes

REFRIGERATOR

No. of Shelves	4 Split(3 Fixed+1 Folding)
Folding Shelf	1
Cantilevered Shelves	Yes
Shelf Construction	Spill Protector™ Tempered Glass
Crisper Bins	2 Humidity Crisper
Glide N' Serve™ Drawer	Yes
Temperature Control Pantry	Digital Control
Flat Metal Back Wall	Yes
Refrigerator Light	Micro Surface LED

REFRIGERATOR DOOR

InstaView™ Door-in-Door®	Yes
--------------------------	-----

8/31/2020

PV-122
September 3, 2020



Door-In-Door® with ColdSaver™ Panel	Yes
Adjustable Door-in-Door® Bins	Yes
No. of Bins	10
Door Bin Construction	1 Piece (clear)

FREEZER

Door Type	Pull Drawer
Drawers	3-Tier Organization
DuraBase™ Solid Drawer Base	Yes
Drawer Divider	Yes
Ice Bin / In-Door Ice	Icemaker & Ice bin in the freezer
Freezer Light	Premium LED
Freezer Handle	SmartPull™ Handle

THINQ® SMART FEATURES

Wi-Fi Enabled	Yes
ThinQ®	Yes
Works with	Google Assistant, Amazon Alexa
SmartDiagnosis™	Yes

MATERIALS AND FINISHES

Contour Door	Yes
--------------	-----

8/31/2020

PV-122

September 3, 2020



Hidden Hinges

Yes

Surface

Smooth

Fingerprint & Smudge Resistant Exterior

Yes

Handles

Matching Commercial Handles

All Available Colors

PrintProof™ Stainless Steel, PrintProof™ Black Stainless Steel

DIMENSIONS/CLEARANCES/WEIGHTS

Depth with Handles

30 3/4"

Depth without Handles

28 1/4"

Depth without Door

24"

Depth (Total with Door Open)

42 5/8"

Height to Top of Case

68 7/8"

Height to Top of Door Hinge

70 1/4"

Width

35 3/4"

Width (Door Open 90° with Handle)

44 1/4"

Width (Door Open 90° without Handle)

40"

Door Edge Clearance with Handle

4 1/4"

Door Edge Clearance without Handle

2 1/8"

Installation Clearance

Sides 1/8", Top 1", Back 2"

Weight (Unit/Carton)

311 lbs./ 335lbs.

Carton Dimensions (WxHxD)

38" x 73" x 33"

Dishwashers**24" Bar Handle Dishwasher
300 Series- Stainless steel
SHXM63W55N**

The 3rd rack provides the perfect space for silverware and large utensils while its V shape leaves room below for taller items.

Key Features

- 44 dB - Quietest Dishwasher Brand.
- 3rd Rack for Additional Loading Capacity
- InfoLight® Beams on Floor to Indicate Dishwasher is Running
- RackMatic® on Upper Rack - 3 Height Adjustments and Up to 9 Possible Rack Positions
- AquaStop® Leak Protection Works 24/7

Design

- Full Size Stainless Steel Tall Tub Installs Perfectly Flush
- 3rd Rack for Additional Loading Capacity
- 16 Place Setting Capacity
- LED Remaining Time Display
- RackMatic® on Upper Rack - 3 Height Adjustments and Up to 9 Possible Rack Positions

Performance

- 44 dB - Quietest Dishwasher Brand.
- 5 Wash Cycles and 4 Options
- Detergent Tray Optimizes Detergent Dissolving
- Speed60® gets your dishes from dirty to dry in about an hour.
- Extra Dry Option for Better Drying Results
- Load Size Sensor Automates Wash Temperature
- Sanitize Option Eliminates Bacteria and Enhances Drying Results

Efficiency

- 269 kwh/yr - Energy Star®

Convenience

- Electronic delay timer: 1-24 hours Delay Start Timer
- AquaStop® Leak Protection Works 24/7
- Self-Latching Door



PV-122
Sept. 3, 2020.

LG LAUNDRY

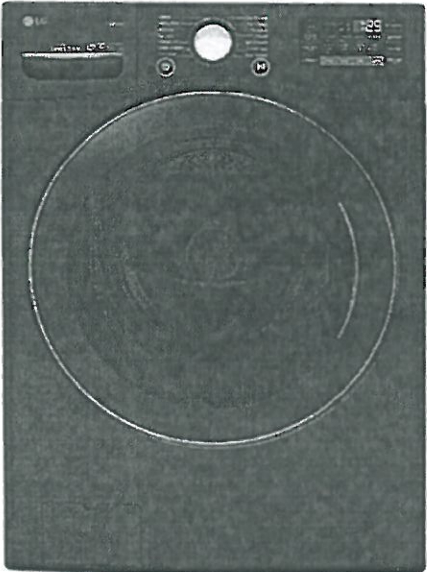
WM3800HBA

5.2 cu.ft. Capacity Front Load Washer

TurboWash™ Technology
Steam Technology
SmartThinQ® Technology (Wi-Fi Enabled)
6Motion™ Technology
2018 ENERGY STAR Most Efficient
Inverter BLDC Pump Motor
SmartDiagnosis™



PR-122
Sept. 3, 2020



Enjoy new ways to control your home with LG smart appliances

SmartThinQ®

CAPACITY	
Capacity	5.2 cu.ft.
APPEARANCE	
Design Look	Front Control
Intelligent Electronic Controls with Dual LED Display	*
Touch Buttons	*
Dial-A-Cycle™	*
ENERGY	
2018 Energy Star Most Efficient	*
CEE Tier	2
WASH PROGRAMS	
No. of Programs	14
Normal, Heavy Duty, Bedding, Sanitary, Allergiene™, Bright Whites™, Tub Clean, Deep Wash, Perm. Press, Delicates, Towels, Speed Wash, Sportswear, Downloaded	
No. of Options	12
Steam, Fresh Care, Pre Wash, Remote Start, Delay Wash, Wi-Fi, Add Garments, TurboWash™, Cold Wash, Extra Rinse, Rinse+Spin, Control Lock	
No. of Wash/Rinse Temps	5
Extra Hot, Hot, Warm, Cold, Tap Cold	
Spin Speeds	Extra High, High, Medium, Low, No Spin
No. of Water Levels	Automatically adjusts to the size of load
No. of Soil Levels	5
FABRIC CARE FEATURES	
ColdWash™ Option	*
SenseClean™ System	*
Steam Technology	*
Allergiene™ Cycle	*
Sanitary Cycle	*
CONVENIENCE FEATURES	
4 Tray Dispenser	Prewash, Main Wash (with liquid detergent cup), Bleach, Fabric Softener
TrueBalance™ Anti-Vibration System	*
SmartDiagnosis™	*
LoadSense	*
Status Indicator(s)	*
End of Cycle Signal	*
Child Lock	*
Auto Suds Removal	*
Forced Drain System	*
LoDecibel™ Quiet Operation	*
Easy Loading TiTub™	*
Wi-Fi Connectivity	*
Energy Monitoring	*

MOTOR AND AGITATOR	
Motor Type	Direct Drive Motor
Motor Speed	Variable
Max RPM	1,300
Axis	Horizontal
MATERIALS AND FINISHES	
NeveRust™ Stainless Steel Drum	*
Cabinet	PCM
Control Panel	Plastic
Top Plate	Painted Steel
Door/Rim	Glass / Chrome (with Dark Blue Tinted Round Cover)
Available Colours	Black Steel (B)
POWER SOURCE	
Ratings	UL Listed
Electrical Requirements	120V, 10 Amps
Type	Electric
OPTIONS / ACCESSORIES	
Pedestal	WDP48
Pedestal Dimensions (WxHxD)	27" x 14 1/8" x 28 2/5"
SideKick™ Pedestal Washer	WD100CB
SideKick™ Pedestal Washer (WxHxD)	27" x 14 1/8" x 30 3/4" (50 9/16" with door open)
Stacking Kit	KSTK1
Hose Included	No
DIMENSIONS	
Product (WxHxD)	27" x 39" x 30 1/4" (55"D with door open)
Carton (WxHxD)	29 1/2" x 43 5/16" x 31 5/16"
Weight (Product/Carton)	187.4 lbs / 209.4 lbs
LIMITED WARRANTY	
1 Year Parts and Labour, 3 Years on Drum, 10 Years on Direct Drive Motor	
UPC CODES	
WM3800HBA Washer (Black Steel)	772454071720
DLEX3900B Electric Dryer (Black Steel)	772454071737
DLGX3901B Gas Dryer (Black Steel)	772454071744

LG LAUNDRY

DLEX3900B/DLGX3901B

7.4 cu.ft. Capacity Electric/Gas Dryer

TurboSteam™ Technology

SmartThinQ® Technology (Wi-Fi Enabled)

Sensor Dry System

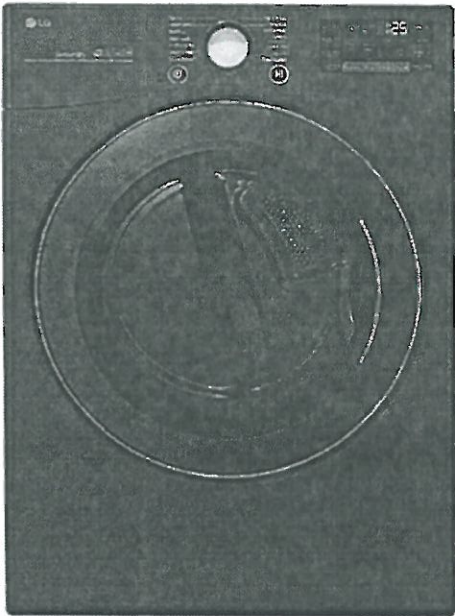
ENERGY STAR® Qualified

SmartDiagnosis™

Touch Control Panel

Drying Rack included

PR-122
Sept. 3, 2020



Enjoy new ways to control your home with LG smart appliances

SmartThinQ®

CAPACITY	
Capacity	7.4 cu.ft.
APPEARANCE	
Design Look	Front Control
Intelligent Electronic Controls with Dual LED Display	*
Touch Buttons	*
Dial-A-Cycle™	*
ENERGY	
ENERGY STAR® Qualified	*
DRYING PROGRAMS	
No. of Programs	14
Programs (Sensor Dry)	Normal, Heavy Duty, Bedding, Small Load, Perm Press, Delicates, Downloaded, Antibacterial, Steam Sanitary™, Steam Fresh™, Sportswear, Towels
Programs (Manual Dry)	Speed Dry, Air Dry
No. of Options	13
Options	More Time, Less Time, Custom PGM, Damp Dry Signal, Wrinkle Care, Energy Saver, Control Lock, PGM Save, Wi-Fi Connect, Remote Start, Default On/Off, TurboSteam™, Reduce Static
Temperature Settings	High, Mid High, Medium, Low, Ultra Low
Drying Levels	Very, More, Normal, Less, Damp
Manual Dry Times	60 min, 50 min, 40 min, 30 min, 20 min, More Time/Less Time
FABRIC CARE FEATURES	
Sensor Dry	*
TurboSteam™	*
Precise Temperature Control and Variable Heater	*
CONVENIENCE FEATURES	
LoDecibel™ Quiet Operation	*
SmartDiagnosis™	*
FlowSense™ Duct Clogging Indicator	*
Wrinkle Care Option	*
Remaining Time Display/Status Indicator(s)	*
End of Cycle Signal	*
Child Lock	*
Reversible Door	*
Leveling Legs	4 Adjustable Legs
Venting Option	4 Way(Elec), 3 Way(Gas)
3 Minute Installation Check	*
Wi-Fi Connectivity	*
Energy Monitoring	*
Drum Light	*

MATERIALS AND FINISHES	
Aluminized Alloy Steel Drum	*
Cabinet	Painted Steel
Control Panel	Plastic
Door/Rim	Glass/Chrome (with Dark Blue Tinted Round Cover)
Available Colours	Black Steel (V)
POWER SOURCE	
Ratings	CSA Listed
Electrical Requirements	240V, 30Amps(Elec) / 120V, 15Amps(Gas)
Type	Electric / Gas
OPTIONS	
Pedestal	WDP4B
Pedestal Dimensions (WxHxD)	27" x 14 1/8" x 28 2/5"
Stacking Kit	KSTK1
DIMENSIONS	
Product (WxHxD)	27" x 39" x 30 1/8" 51 1/2" D (with door open)
Carton (WxHxD)	29 7/10" x 43 1/5" x 31 3/10"
Weight (Product/Carton)	125.7 lbs/ 126.8 lbs
LIMITED WARRANTY	
1 Year Parts and Labour	
UPC CODES	
DLEX3900B Electric Dryer (Black Steel)	772454071737
DLGX3900B Gas Dryer (Black Steel)	772454071744
WM3800HBA Washer (Black Steel)	772454071720

SCHEDULE 'F'

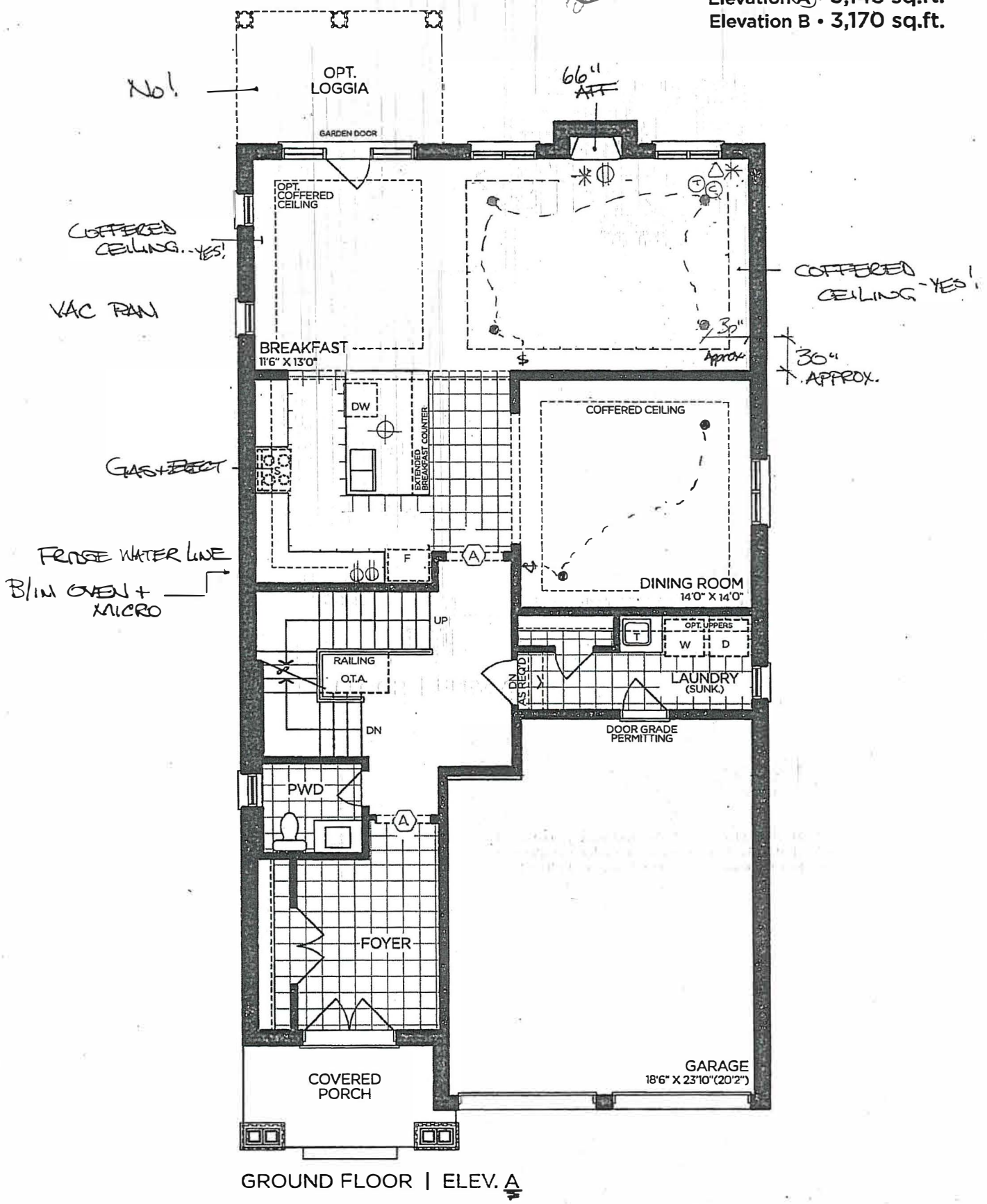


PV-122
APRIL 22
2020

The Valleyview

40' SERIES

Elevation A • 3,145 sq.ft.
Elevation B • 3,170 sq.ft.



VENDOR

PURCHASER

PURCHASER

GOLDPARK

WORTH MORE™

Prices, figures, illustrations, sizes, features and finishes are subject to change without notice. Areas and dimensions are approximate and actual usable floor space may vary from the stated area. Layout may be reverse of the unit purchased. E. & O.E. 4002

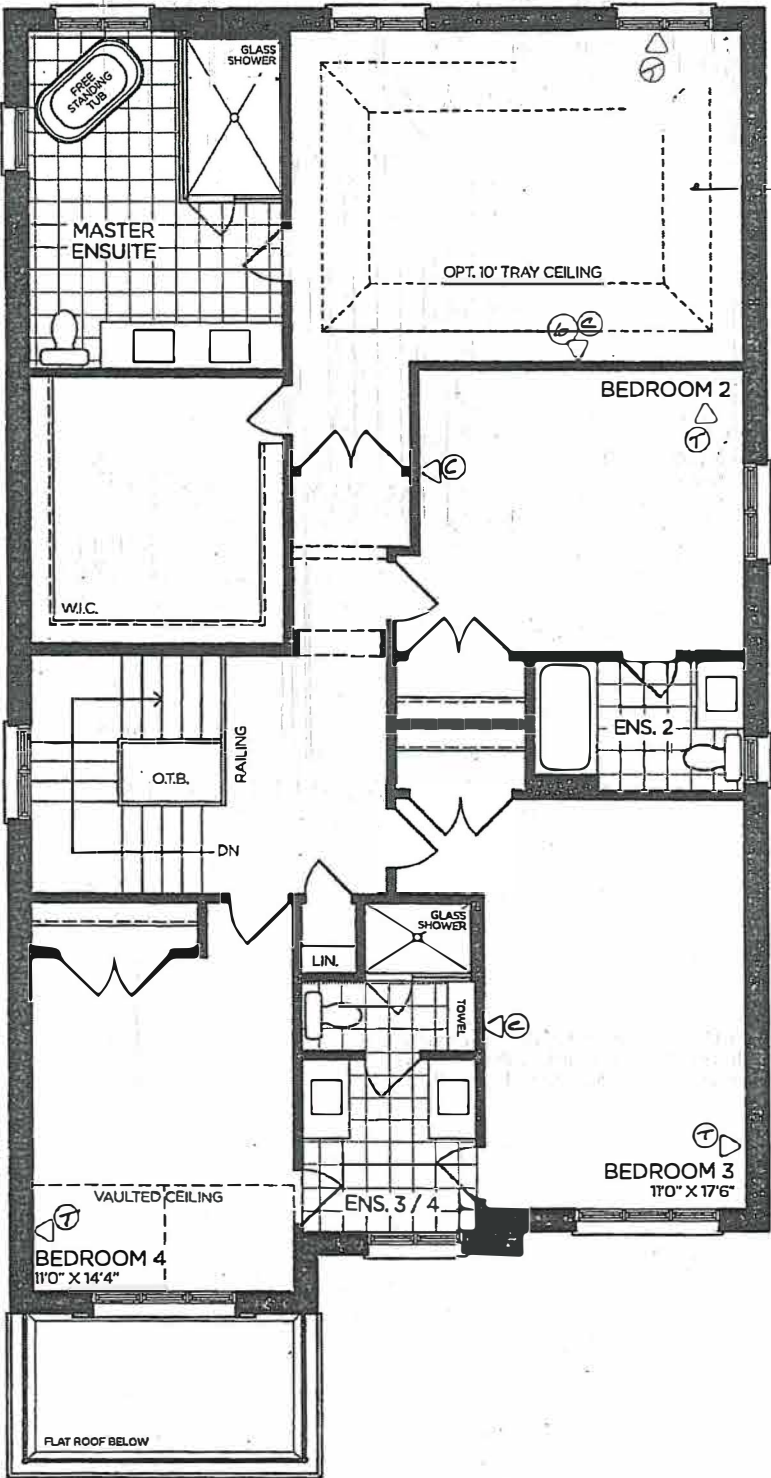
SCHEDULE 'F'



PV-122
APRIL 21, 2020

The Valleyview
40' SERIES

Elevation A • 3,145 sq.ft.
Elevation B • 3,170 sq.ft.



SECOND FLOOR | ELEV. A

VENDOR

PURCHASER

PURCHASER

GOLDPARK
WORTH MORE™

Prices, figures, illustrations, sizes, features and finishes are subject to change without notice. Areas and dimensions are approximate and actual usable floor space may vary from the stated area. Layout may be reverse of the unit purchased. E. & O.E. 4002

SCHEDULE 'F'

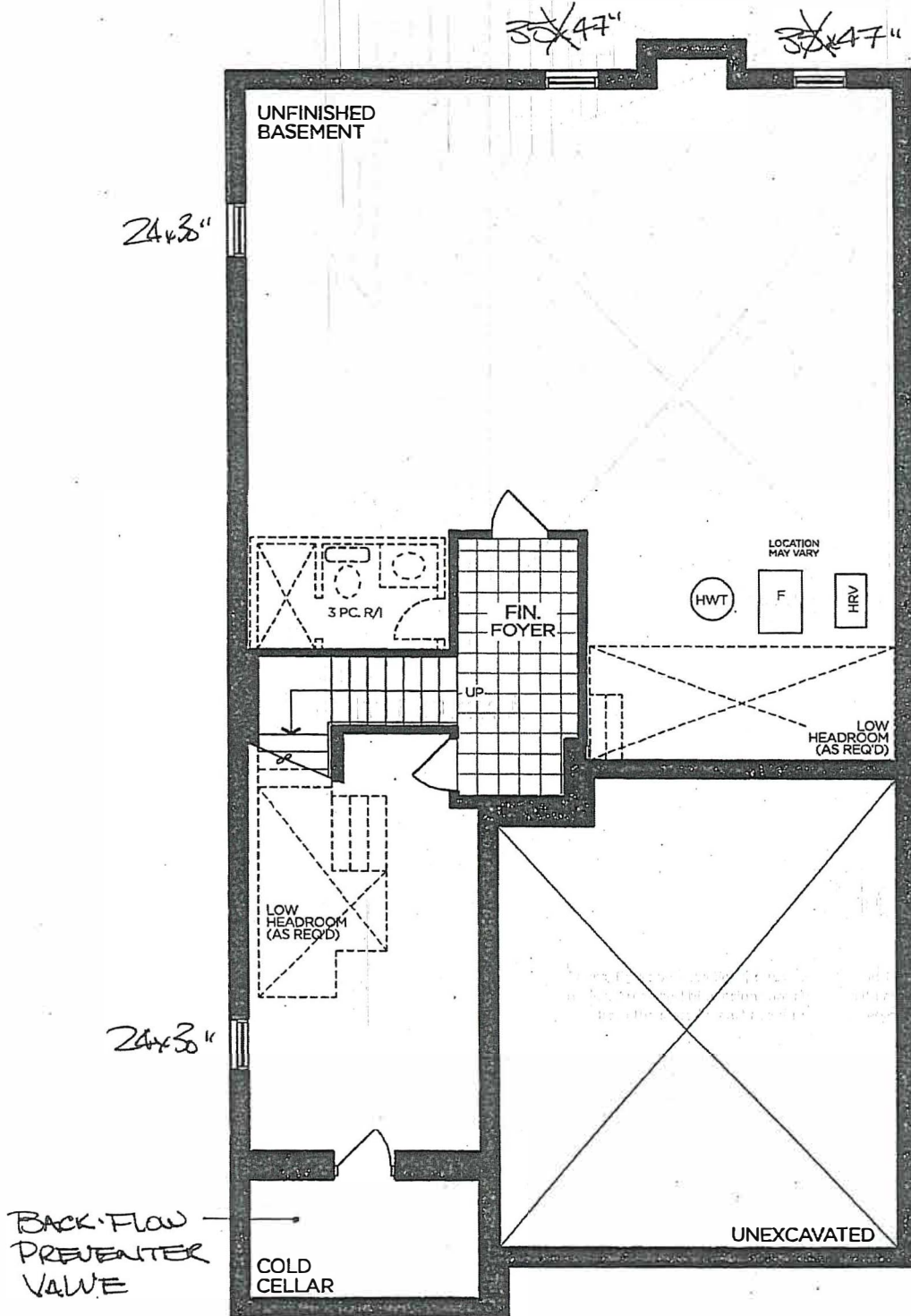


FV-122
APRIL 22, 2020

The Valleyview

40' SERIES

Elevation A • 3,145 sq.ft.
Elevation B • 3,170 sq.ft.



BASEMENT | ELEV. A

VENDOR

PURCHASER

PURCHASER

GOLDPARK
WORTH MORE™

Prices, figures, illustrations, sizes, features and finishes are subject to change without notice. Areas and dimensions are approximate and actual usable floor space may vary from the stated area. Layout may be reverse of the unit purchased. E. & O.E. 4002



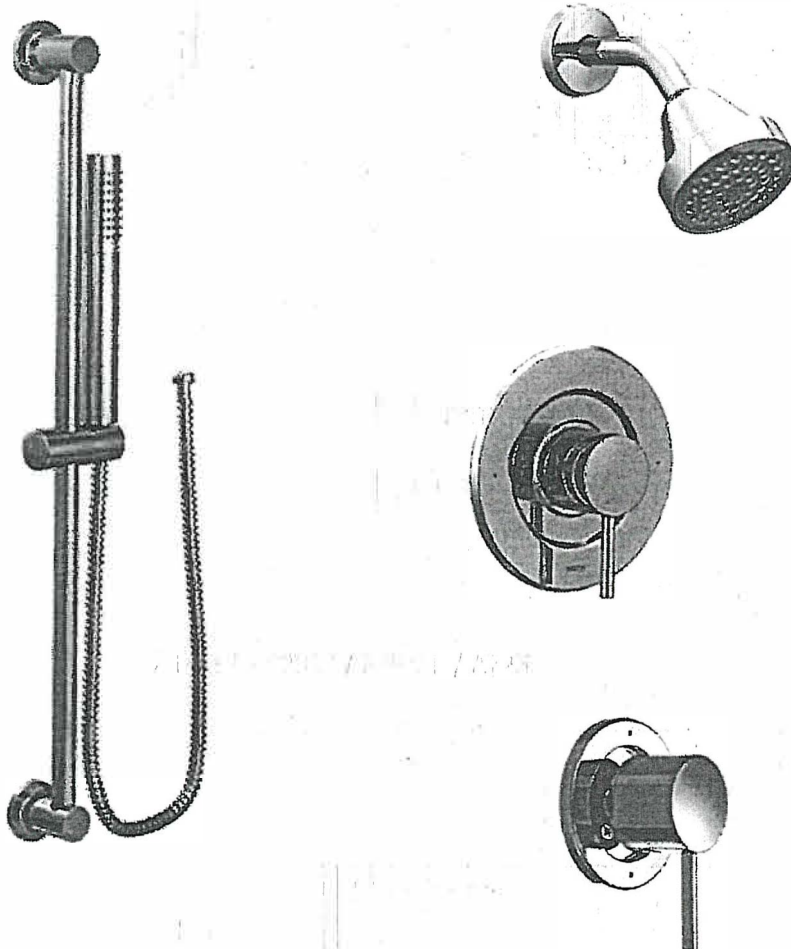
PINE VALLEY

FOREVERGREEN

PLUMBING UPGRADES

POSI-TEMP SHOWER ONLY* W/ 3 FUNCTION TRANSFER VALVE/TRIM AND SLIDE BAR W/ HAND SHOWER

MOEN - ALIGN



☒ CHROME

☐ BRUSHED GOLD

☐ MATTE BLACK

☐ from WALL

☒ from CEILING

MODEL T21193EP / 3372 / 128284 / T4191 / 62320 / 3887EP / A725

Lot#

122

Room:

MASTER ENSUITE

Signature:

[Signature]

Date:

April 22 2020

Signature:

[Signature]

GOLDPARK
WORTH MORE

SCHEDULE 'F'

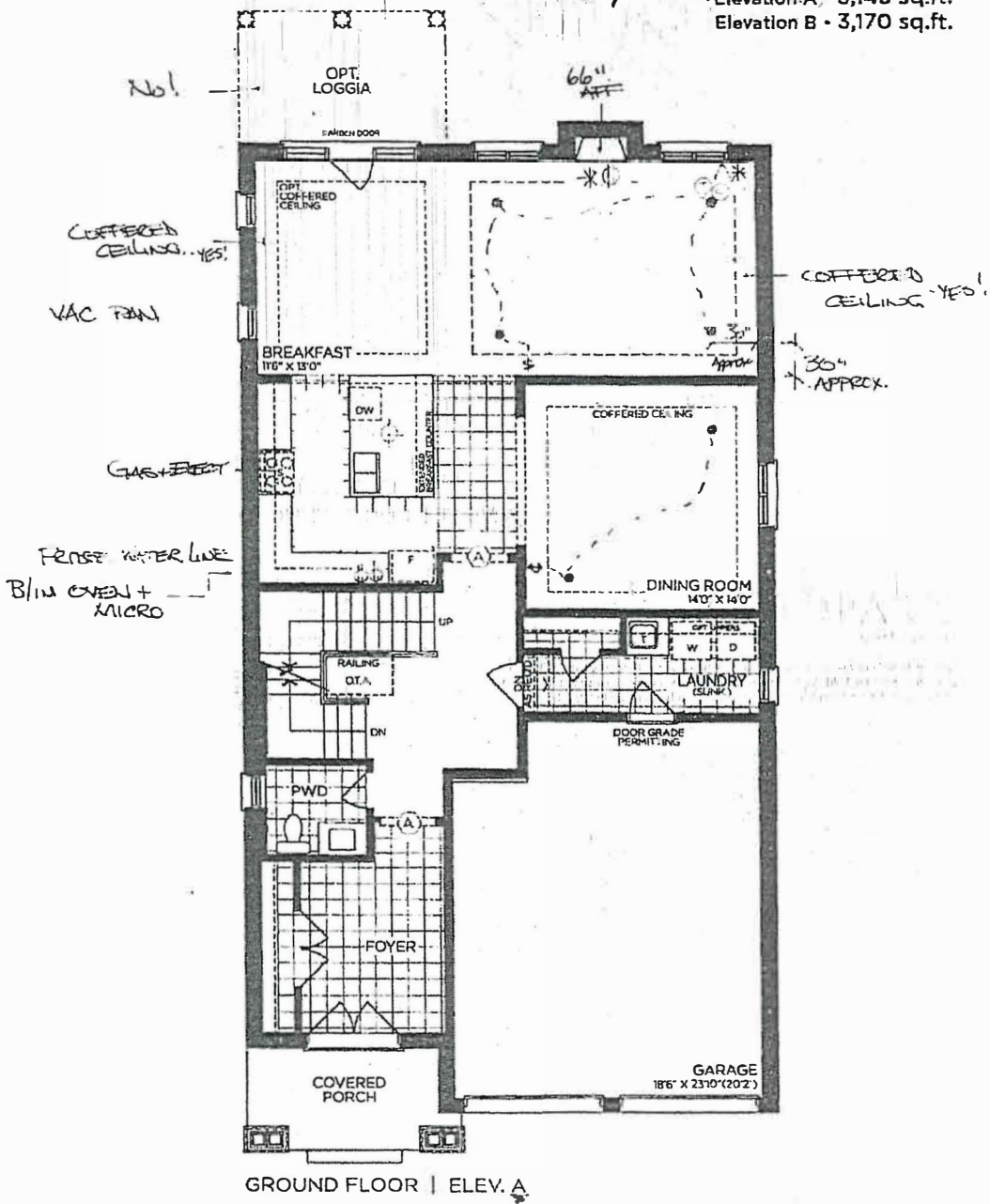


PV-122
APRIL 2020

BB
D

The Valleyview
40' SERIES

Elevation A - 3,145 sq.ft.
Elevation B - 3,170 sq.ft.



VENDOR
PURCHASER
PURCHASER

GOLDPARK
WORTH MORE™

Prices, figures, illustrations, sizes, features and finishes are subject to change without notice. Areas and dimensions are approximate and actual usable floor space may vary from the stated area. Layout may be reverse of the unit purchased. E & O.E. 4002

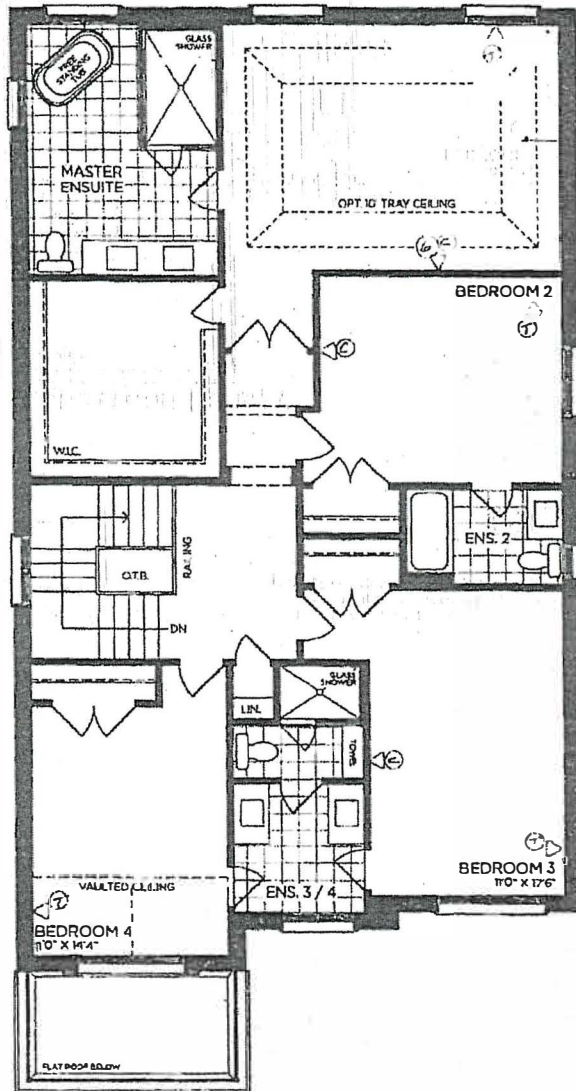


SCHEDULE 'F'

PV-122 (Rb)
APRIL 22, 2020

The
Valleyview
40' SERIES

Elevation A • 3,145 sq.ft.
Elevation B • 3,170 sq.ft.



SECOND FLOOR | ELEV. A

VENDOR
PURCHASER
PURCHASER

GOLDPARK
WORTH MORE™

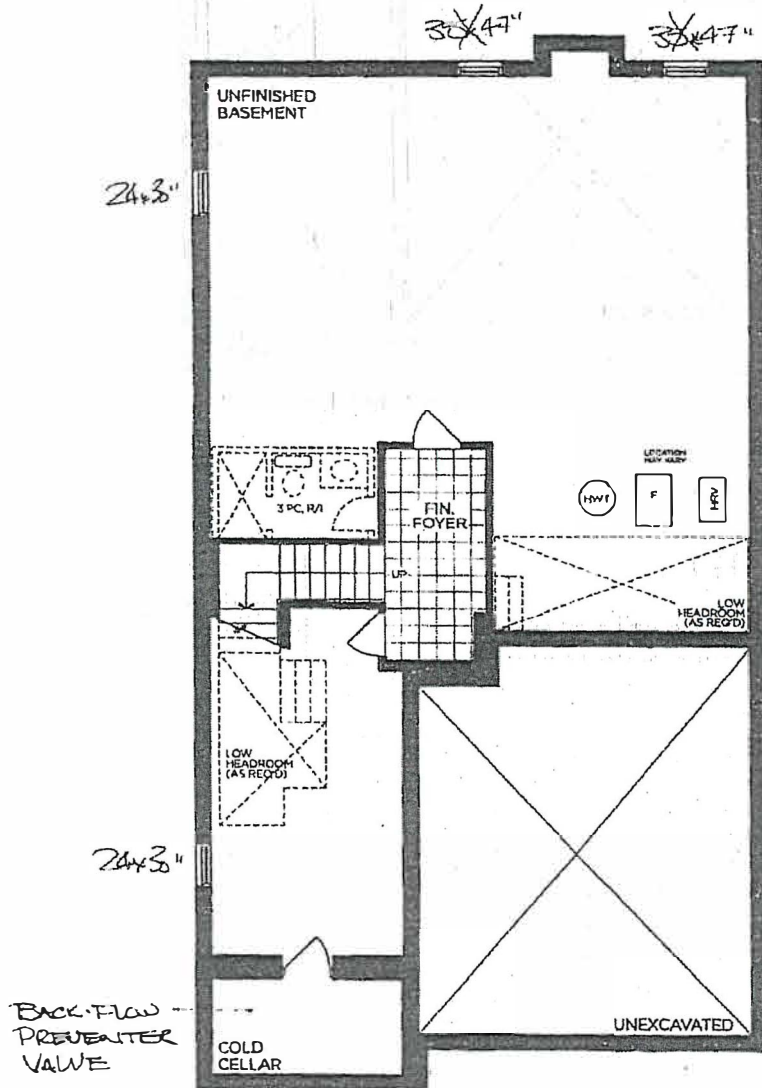
Prices, figures, illustrations, sizes, features and finishes are subject to change without notice. Areas and dimensions are approximate and actual usable floor space may vary from the stated area. Layout may be reverse of the unit purchased. E & O.E. 1002

SCHEDULE 'F'



PV-122
APRIL 22, 2020

The
Valleyview
40' SERIES
Elevation A • 3,145 sq.ft.
Elevation B • 3,170 sq.ft.



BASEMENT | ELEV. A

VENDOR

PURCHASER

PURCHASER

[Handwritten signatures]

GOLDPARK
WORTH MORE

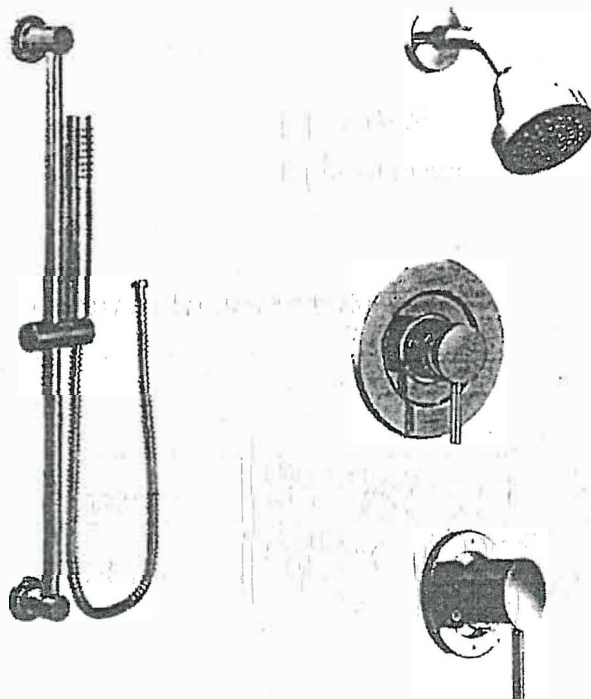
Prices, figures, illustrations, sizes, features and finishes are subject to change without notice. Areas and dimensions are approximate and actual usable floor space may vary from the stated area. Layout may be reverse of the unit purchased. E & DE 4902

PLUMBING UPGRADES



POST-TEMP SHOWER ONLY* W/ 3 FUNCTION TRANSFER
VALVE/TRIM AND SLIDE BAR W/ HAND SHOWER

MOEN - ALIGN



☒ CHROME

☐ from WALL

☐ BRUSHED GOLD

☒ from CEILING

☐ MATTE BLACK

MODEL T21193EP / 3372 / 128284 / T4191 / 62320 / 3887EP / A725

Lot#

122

Room:

MASTER ENSUITE

Signature:

Date:

APRIL 22 2020

Signature:

GOLDPARK
WORTH MORE