



CONSTRUCTION SUMMARY

Lot: 1
Model: 50.04 A BEAUMONT
Project/Phase: Pine Valley Forevergreen / 1

DRYWALL

Invoice	Qty.	Description
2525 72,567 16Dec20	2	FOYER & MAIN HALL: MODEL OPTIONS - FOYER - OPT. COFFERED CEILING AS PER PLAN
2525 72,572 16Dec20	1	2ND FLOOR HALL: MODEL OPTIONS 50.04 - HALLWAY 2ND FLOOR - OPT. CIRCULAR COFFERED CEILING DETAIL AS PER PLAN
2525 72,565 16Dec20	1	LIBRARY: MODEL OPTIONS 50.04 - LIBRARY - OPT. COFFERED CEILING AS PER PLAN
2525 72,564 16Dec20	1	LIBRARY: MODEL OPTIONS 50.04 - LIBRARY - OPT. WAFFLE CEILING, BEAM DETAIL AS PER PLAN (4 BOXES) OPTION #1 CTR-B07
2525 16Dec20 NoCat	1	MASTER ENSUITE: SHOWER NICHE [SHAMPOO SHELF] - COMPLETE WITH MATCHING MARBLE JAMBS ON 4 SIDES, STANDARD TILE, APPROX. 12 X 18 INSTALLED VERTICALLY - SEE PLAN FOR LOCATION
2525 16Dec20 NoCat	1	DRESSING ROOM: SUN TUNNEL [TLR 14 FOOT] - NOTED LOCATION, IF POSSIBLE, H.O APPROVAL REQUIRED SEE PLAN FOR LOCATION
2525 16Dec20 NoCat	1	UPPER HALL: INCREASE HEIGHT OF DOOR TO 8FT SECOND FLOOR - PER DOOR
2525 16Dec20 NoCat	1	KITCHEN: UPGRADE GARDEN DOOR TO 96" DOOR ASSEMBLY



CONSTRUCTION SUMMARY

Lot: 1
Model: 50.04 A BEAUMONT
Project/Phase: Pine Valley Forevergreen / 1

ELECTRICAL

Invoice	Qty.	Description
2525 72,282 16Dec20	1	KITCHEN: ADDITIONAL 220V RECEPTACLE ON A SEPARATE CIRCUIT - FOR BUILT-IN WALL OVEN - APPLIANCE NOT INCLUDED - DOES NOT INCLUDE BREAKER THAT IS TO BE INSTALLED BY LICENSED ELECTRICIAN AND ARRANGED BY HOMEOWNER AFTER CLOSING
2525 72,273 16Dec20	1	KITCHEN: 110V WALL RECEPTACLE ON SEPARATE CIRCUIT - GAS FIRED COOKTOP - FOR AUX. EQUIPMENT - NOT A STOVE PLUG
2525 72,303 16Dec20	1	KITCHEN: FIXTURE: UNDER CABINET FLUORESCENT LIGHT FIXTURES - DOES NOT INCLUDE (AND REQUIRES) LIGHT VALANCE
2525 72,307 16Dec20	1	KITCHEN: FIXTURE: RELOCATE STANDARD CEILING MOUNT FIXTURE - LOCATE APPROX CENTERED ABOVE ISLAND, SEE PLAN FOR LOCATION
2525 72,306 16Dec20	1	KITCHEN: RELOCATE KITCHEN APPLIANCE (FRIDGE) FROM STANDARD LOCATION - APPROX. "NEW" LOCATION AS PER ATTACHED DRAWINGS
2525 72,280 16Dec20	1	KITCHEN: CEILING OUTLET: ADDITIONAL REINFORCED CEILING OUTLET - LOCATE APPROX CENTERED ABOVE ISLAND, USE SAME SWITCH AS STANDARD LIGHT
2525 72,289 16Dec20	6	KITCHEN: 4" E/S LED INTERIOR POT LIGHT - GROUND FLOOR - EACH, INCLUDES 1 SWITCH INCLUDED IN APS SEE PLAN FOR LOCATION
2525 72,289 16Dec20	6	KITCHEN/SERVERY: 4" E/S LED INTERIOR POT LIGHT - GROUND FLOOR - EACH SEE PLAN FOR LOCATION
2525 72,278 16Dec20	1	KITCHEN: ADDITIONAL INTERIOR SWITCH FOR POTLIGHTS
2525 72,309 16Dec20	2	MAIN HALL: UPGRADE STANDARD CEILING MOUNT FIXTURE TO (1) LED POT LIGHT - GROUND FLOOR SEE PLAN FOR LOCATION
2525 72,289 16Dec20	3	MAIN HALL: 4" E/S LED INTERIOR POT LIGHT - GROUND FLOOR - EACH USE SAME SWITCH AS STANDARD
2525 72,309 16Dec20	1	LIBRARY: UPGRADE STANDARD CEILING MOUNT FIXTURE TO (1) LED POT LIGHT - GROUND FLOOR SEE PLAN FOR LOCATION
2525 72,289 16Dec20	3	LIBRARY: 4" E/S LED INTERIOR POT LIGHT - GROUND FLOOR - EACH USE STANDARD SWITCH SEE PLAN FOR LOCATION



CONSTRUCTION SUMMARY

Lot: 1
Model: 50.04 A BEAUMONT
Project/Phase: Pine Valley Forevergreen / 1

ELECTRICAL

Invoice	Qty.	Description
2525 72,289 16Dec20	4	DINING ROOM: 4" E/S LED INTERIOR POT LIGHT - GROUND FLOOR - EACH
2525 72,278 16Dec20	1	DINING ROOM: ADDITIONAL INTERIOR SWITCH FOR POTLIGHTS
2525 72,281 16Dec20	1	GREAT ROOM: INTERIOR WALL OUTLET: ADDITIONAL 110V WALL INTERIOR RECEPTACLE ON EXISTING CIRCUIT FOR WALL MOUNTED TV - LOCATE ABOVE FIREPLACE, APPROX 66" A.F.F.
2525 72,310 16Dec20	2	UPPER HALL: UPGRADE STANDARD CEILING MOUNT FIXTURE TO (1) LED POT LIGHT - SECOND FLOOR - SEE PLAN FOR LOCATION
2525 72,290 16Dec20	7	UPPER HALL: 4" E/S LED INTERIOR POT LIGHT (INSULATED CEILING) - SECOND FLOOR - EACH USE STANDARD SWITCHES
2525 72,280 16Dec20	1	MASTER ENSUITE: CEILING OUTLET: ADDITIONAL REINFORCED CEILING OUTLET - LOCATE APPROX CENTERED ABOVE TUB
2525 72,288 16Dec20	2	MASTER ENSUITE: ROUGH-IN FOR ADDITIONAL WALL SCONCE (1) CAPPED OUTLET ON EXISTING SWITCH - FIXTURE NOT INCLUDED - IN ADDITION TO STANDARD VANITY LIGHT - APPROX 80" A.F.F. USE SAME SWITCH AS STANDARD
2525 72,310 16Dec20	1	MASTER ENSUITE: UPGRADE STANDARD CEILING MOUNT FIXTURE TO (1) LED POT LIGHT - SECOND FLOOR - SEE PLAN FOR LOCATION
2525 72,290 16Dec20	4	MASTER ENSUITE: 4" E/S LED INTERIOR POT LIGHT (INSULATED CEILING) - SECOND FLOOR - EACH USE SAME SWITCH AS STANDARD SEE PLAN FOR LOCATION
2525 72,310 16Dec20	1	DRESSING ROOM: UPGRADE STANDARD CEILING MOUNT FIXTURE TO (1) LED POT LIGHT - SECOND FLOOR -
2525 72,290 16Dec20	5	DRESSING ROOM: 4" E/S LED INTERIOR POT LIGHT (INSULATED CEILING) - SECOND FLOOR - EACH USE SAME SWITCH AS STANDARD
2525 72,310 16Dec20	1	WATER CLOSET: UPGRADE STANDARD CEILING MOUNT FIXTURE TO (1) LED POT LIGHT - SECOND FLOOR - SEE PLAN
2525 72,290 16Dec20	4	MASTER BEDROOM: 4" E/S LED INTERIOR POT LIGHT (INSULATED CEILING) - SECOND FLOOR - EACH SEE PLAN FOR LOCATION



CONSTRUCTION SUMMARY

Lot: 1
Model: 50.04 A BEAUMONT
Project/Phase: Pine Valley Forevergreen / 1

ELECTRICAL

Invoice	Qty.	Description
2525 72,278 16Dec20	1	MASTER BEDROOM: ADDITIONAL INTERIOR SWITCH FOR POTLIGHTS

FORMING

Invoice	Qty.	Description
2478 72,560 20Oct20	1	MODEL OPTIONS 50.04 - KITCHEN REAR - OPT. COVERED LOGGIA AS PER PLAN

FRAMING

Invoice	Qty.	Description
2525 72,631 16Dec20	2	MASTER ENSUITE: SHOWER NICHE [SHAMPOO SHELF] - COMPLETE WITH MATCHING MARBLE JAMBS ON 4 SIDES, STANDARD TILE, APPROX. 12 X 18 INSTALLED VERTICALLY - SEE PLAN FOR LOCATION
2525 72,636 16Dec20	1	DRESSING ROOM: SUN TUNNEL [TLR 14 FOOT] - NOTED LOCATION, IF POSSIBLE, H.O APPROVAL REQUIRED SEE PLAN FOR LOCATION
2525 16Dec20 NoCat	1	FOYER & MAIN HALL: MODEL OPTIONS - FOYER - OPT. COFFERED CEILING AS PER PLAN
2525 16Dec20 NoCat	1	2ND FLOOR HALL: MODEL OPTIONS 50.04 - HALLWAY 2ND FLOOR - OPT. CIRCULAR COFFERED CEILING DETAIL AS PER PLAN
2525 16Dec20 NoCat	1	LIBRARY: MODEL OPTIONS 50.04 - LIBRARY - OPT. COFFERED CEILING AS PER PLAN
2525 16Dec20 NoCat	1	LIBRARY: MODEL OPTIONS 50.04 - LIBRARY - OPT. WAFFLE CEILING, BEAM DETAIL AS PER PLAN (4 BOXES) OPTION #1 CTR-B07
2525 16Dec20 NoCat	1	UPPER HALL: INCREASE HEIGHT OF DOOR TO 8FT SECOND FLOOR - PER DOOR
2525 16Dec20 NoCat	1	KITCHEN: UPGRADE GARDEN DOOR TO 96" DOOR ASSEMBLY



CONSTRUCTION SUMMARY

Lot: 1
Model: 50.04 A BEAUMONT
Project/Phase: Pine Valley Forevergreen / 1

HVAC

Invoice	Qty.	Description
2525 72,224 16Dec20	1	KITCHEN: GAS LINE ROUGH-IN - MAIN FLOOR FOR GAS COOKTOP - SEE PLAN FOR LOCATION
2525 72,217 16Dec20	1	KITCHEN - UPGRADE TO 8" DUCT (EXTERIOR WALL) IN LIEU OF STANDARD OFFERING

INTERIOR DOORS AND TRIM

Invoice	Qty.	Description
2525 72,644 16Dec20	16	UPPER HALL: INCREASE HEIGHT OF DOOR TO 8FT SECOND FLOOR - PER DOOR

INTERIOR TRIM AND DOORS

Invoice	Qty.	Description
2525 16Dec20 NoCat	1	KITCHEN: UPGRADE GARDEN DOOR TO 96" DOOR ASSEMBLY

KITCHEN AND BATH CABINETRY

Invoice	Qty.	Description
2525 72,217 16Dec20 **	1	KITCHEN - UPGRADE TO 8" DUCT (EXTERIOR WALL) IN LIEU OF STANDARD OFFERING
2525 16Dec20 NoCat	1	KITCHEN: GAS LINE ROUGH-IN - MAIN FLOOR FOR GAS COOKTOP - SEE PLAN FOR LOCATION
2525 16Dec20 NoCat	1	KITCHEN: GAS LINE ROUGH-IN - MAIN FLOOR FOR GAS COOKTOP - SEE PLAN FOR LOCATION

MASONRY

Invoice	Qty.	Description
2525 16Dec20 NoCat	1	KITCHEN: UPGRADE GARDEN DOOR TO 96" DOOR ASSEMBLY



CONSTRUCTION SUMMARY

Lot: 1
Model: 50.04 A BEAUMONT
Project/Phase: Pine Valley Forevergreen / 1

NETWORK AND WIRING

Invoice	Qty.	Description
2525 72,259 16Dec20	1	GREAT ROOM: CONDUIT PIPE - FOR WALL MOUNT TV - LOCATE ABOVE FIREPLACE, APPROX 66" A.F.F., TERMINATING AT CABLE LOCATION - SEE PLAN FOR LOCATION
2525 72,258 16Dec20	1	GREAT ROOM: ADDITIONAL CAT6 ETHERNET OUTLET - EACH - SEE PLAN FOR LOCATION

PAINT

Invoice	Qty.	Description
2525 16Dec20 NoCat	1	FOYER & MAIN HALL: MODEL OPTIONS - FOYER - OPT. COFFERED CEILING AS PER PLAN
2525 16Dec20 NoCat	1	2ND FLOOR HALL: MODEL OPTIONS 50.04 - HALLWAY 2ND FLOOR - OPT. CIRCULAR COFFERED CEILING DETAIL AS PER PLAN
2525 16Dec20 NoCat	1	LIBRARY: MODEL OPTIONS 50.04 - LIBRARY - OPT. COFFERED CEILING AS PER PLAN
2525 16Dec20 NoCat	1	LIBRARY: MODEL OPTIONS 50.04 - LIBRARY - OPT. WAFFLE CEILING, BEAM DETAIL AS PER PLAN (4 BOXES) OPTION #1 CTR-B07
2525 16Dec20 NoCat	1	KITCHEN: UPGRADE GARDEN DOOR TO 96" DOOR ASSEMBLY



CONSTRUCTION SUMMARY

Lot: 1
Model: 50.04 A BEAUMONT
Project/Phase: Pine Valley Forevergreen / 1

PLUMBING

Invoice	Qty.	Description
2525 72,332 16Dec20	1	KITCHEN: ROUGH-IN 1/4" COLD WATER LINE TO FRIDGE
2525 16Dec20 NoCat	1	MASTER ENSUITE: UPGRADE SHOWER TO MOEN 'ALIGN' HAND SHOWER + RAIN SHOWER (from ceiling) - BRUSHED GOLD
2525 16Dec20 NoCat	1	KITCHEN: ADD POT FILLER ROUGH IN + TRIM - MOEN 'MODERN' - BRUSHED GOLD
2525 16Dec20 NoCat	1	MOEN 'ALIGN' FLOOR MOUNTED TUB FILLER - BRUSHED GOLD
2525 16Dec20 NoCat	2	MASTER ENSUITE: UPGRADE TO MOEN 'ALIGN' 8" CC LAV - BRUSHED GOLD

WINDOWS AND DOORS

Invoice	Qty.	Description
2525 16Dec20 NoCat	1	KITCHEN: UPGRADE GARDEN DOOR TO 96" DOOR ASSEMBLY
2525 16Dec20 NoCat	1	DRESSING ROOM: SUN TUNNEL [TLR 14 FOOT] - NOTED LOCATION, IF POSSIBLE, H.O APPROVAL REQUIRED SEE PLAN FOR LOCATION

SCHEDULE 'F'

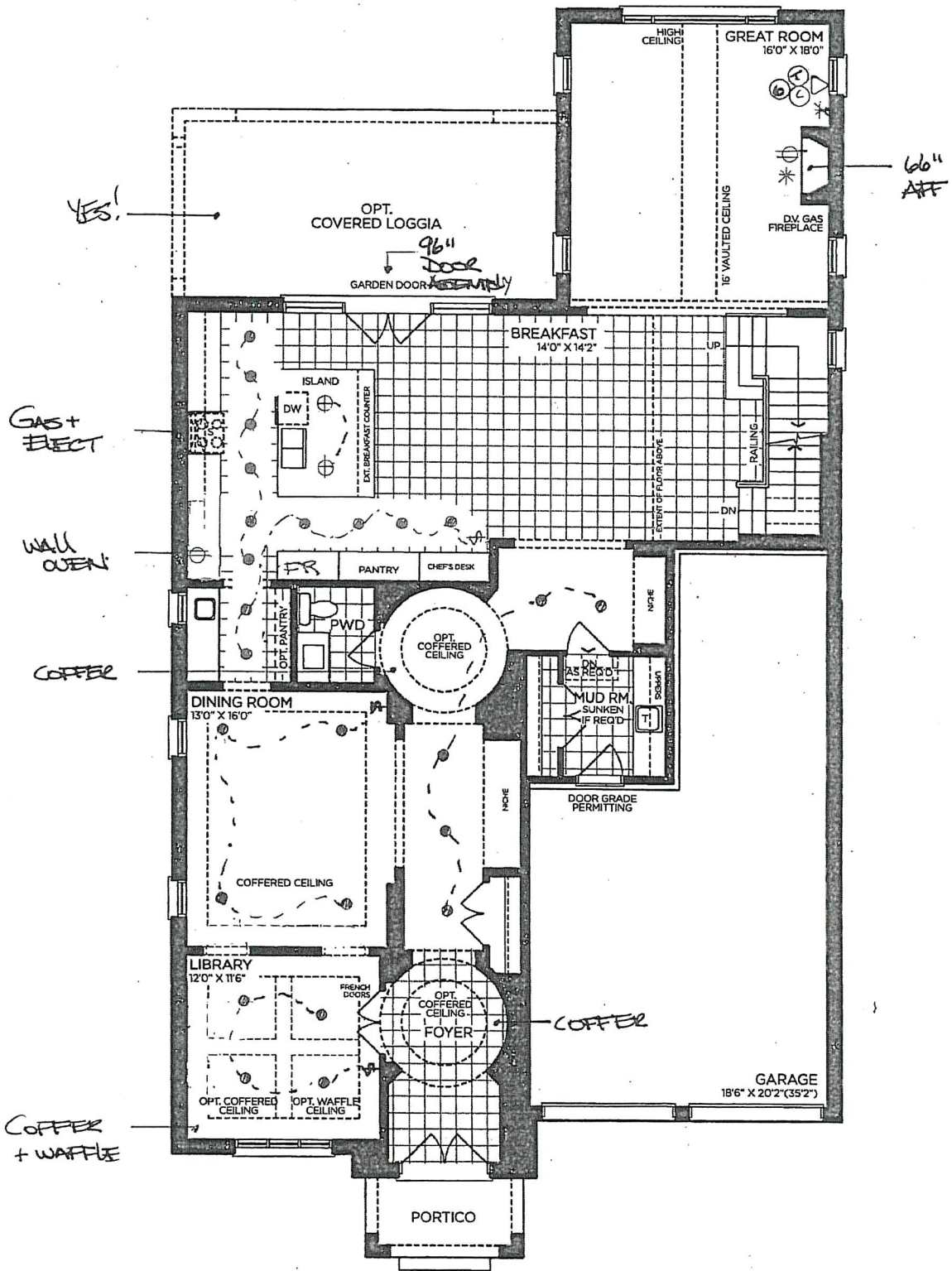


PV-1
Oct 19 2020
PV-1
DEC 8 2020

The Beaumont

50' SERIES

→ Elevation A • 4,170 sq.ft.
4,315 sq.ft. Opt. Elevator
Elevation B • 4,165 sq.ft.
4,315 sq.ft. Opt. Elevator
Elevation C • 4,250 sq.ft.
4,400 sq.ft. Opt. Elevator



GROUND FLOOR | ELEV. A

VENDOR	<input type="text"/>
PURCHASER	<input type="text"/>
PURCHASER	<input type="text"/>

GOLDPARK
WORTH MORE™

Prices, figures, illustrations, sizes, features and finishes are subject to change without notice. Areas and dimensions are approximate and actual usable floor space may vary from the stated area. Layout may be reverse of the unit purchased. E. & O.E. 5004

SCHEDULE 'F'



TV-1
OCT 19 2020
DEC 8 2020

The
Beaumont
50' SERIES

- Elevation A • 4,170 sq.ft.
4,315 sq.ft. Opt. Elevator
Elevation B • 4,165 sq.ft.
4,315 sq.ft. Opt. Elevator
Elevation C • 4,250 sq.ft.
4,400 sq.ft. Opt. Elevator

8' DOORS
THRU OUT.

FLOOR MOUNT
TUB FLUOR

ADD →

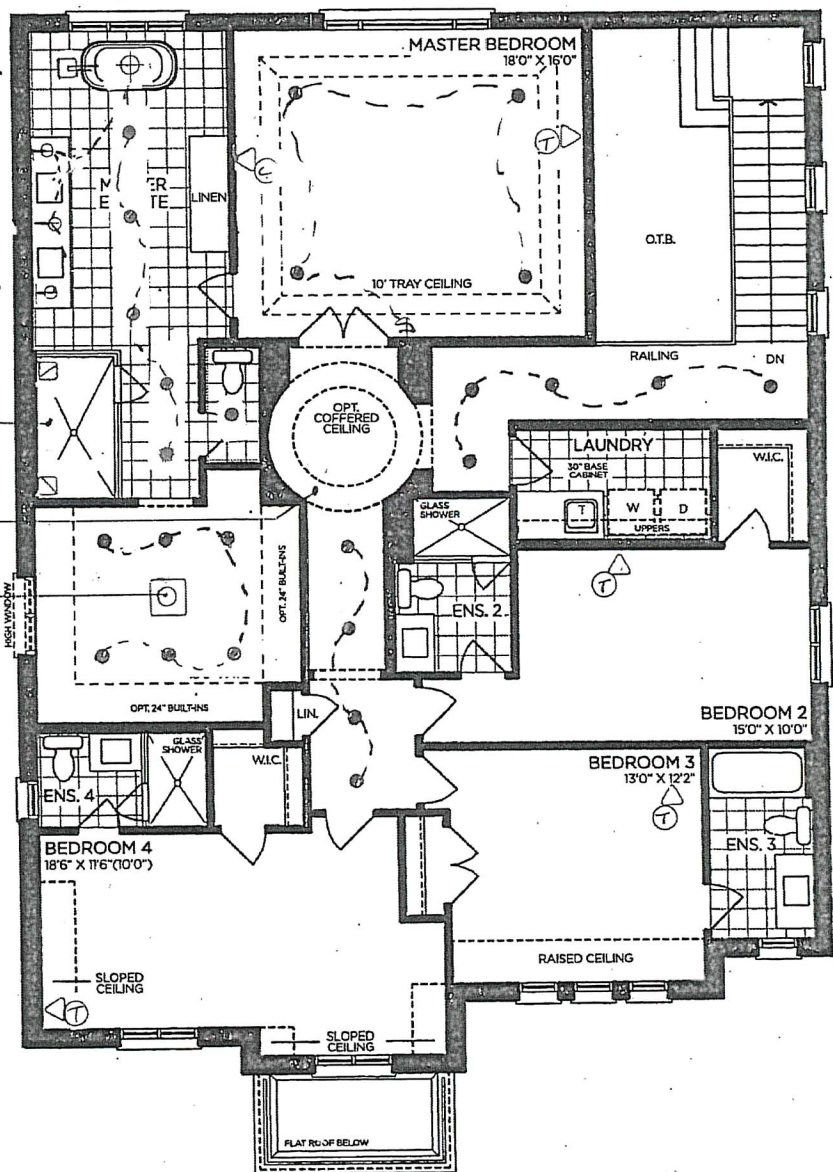
STD →

ADD →

RAIN
SHOWER

COFFER

STAIR
TUNNEL



SECOND FLOOR | ELEV. A

VENDOR

PURCHASER

PURCHASER

GOLDPARK
WORTH MORE™

Prices, figures, illustrations, sizes, features and finishes are subject to change without notice. Areas and dimensions are approximate and actual usable floor space may vary from the stated area. Layout may be reverse of the unit purchased. E. & O.E. 5004

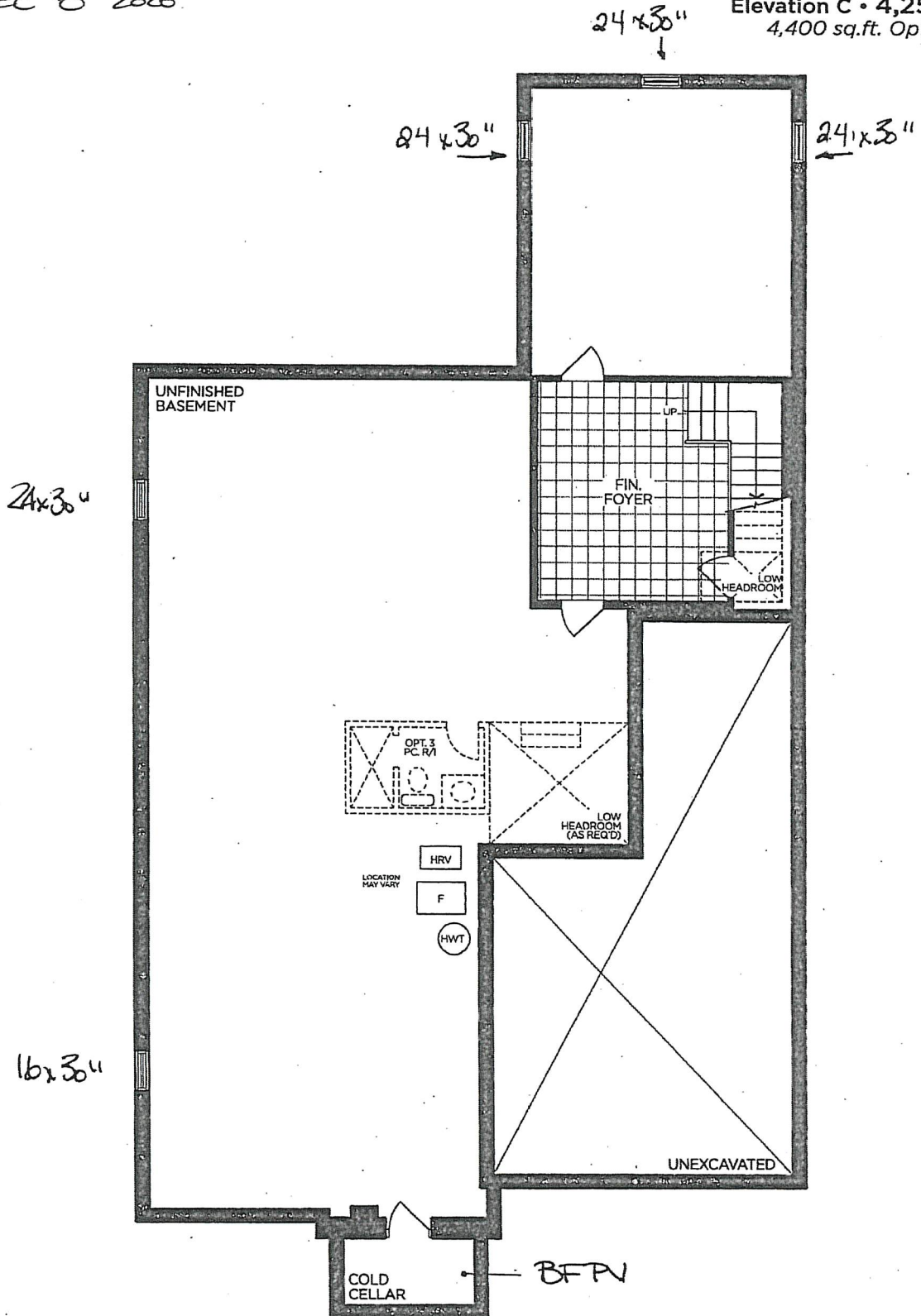
SCHEDULE 'F'



PV-1
Oct 19 2020
Dec 8 2020

The Beaumont 50' SERIES

→ Elevation A • 4,170 sq.ft.
4,315 sq.ft. Opt. Elevator
Elevation B • 4,165 sq.ft.
4,315 sq.ft. Opt. Elevator
Elevation C • 4,250 sq.ft.
4,400 sq.ft. Opt. Elevator



BASEMENT | ELEV. A

VENDOR

PURCHASER

PURCHASER

GOLDPARK
WORTH MORE™

Prices, figures, illustrations, sizes, features and finishes are subject to change without notice. Areas and dimensions are approximate and actual usable floor space may vary from the stated area. Layout may be reverse of the unit purchased. E. & O.E. 5004

UPGRADE PLUMBING

MOEN - ALIGN
3 Function SHOWER ONLY* Rain Shower and Handshower
IN BRUSHED GOLD (BG)



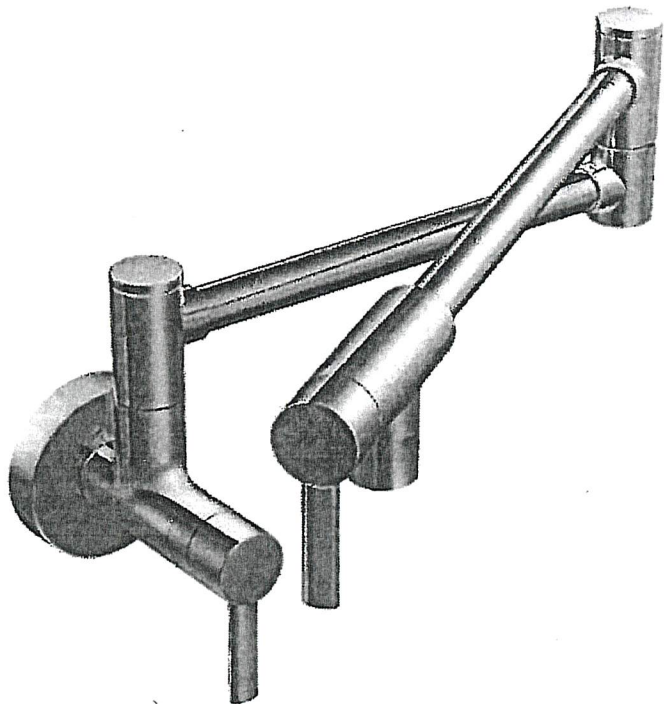
MODEL: T2192EP Shower Trim Only* / UT4191 Transfer Valve + U361CI Valve / 62320 1/2" CC Valve / 3887EP Handshower + A725 Drop El / 226651 Shower Arm (from ceiling)

LOT #: PV-1	DATE: Dec. 16, 2020	ROOM: Master Ensuite
SIGNATURE:		
SIGNATURE:		

UPGRADE KITCHEN EXTRA

MOEN - MODERN

Pot Filler



- ☐ CHROME
- ☐ STAINLESS (SRS)
- ☒ BRUSHED GOLD (BG)
- ☐ MATTE BLACK (BL)

MODEL: S665 (SRS, BG, BL) Pot Filler

Lot# PV-1

Date: Dec.16,2020

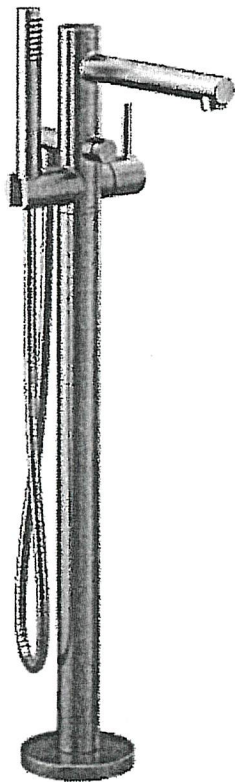
Room: Kitchen

Signature:

Signature:

MOEN - ALIGN

Single Freestanding Tub Filler



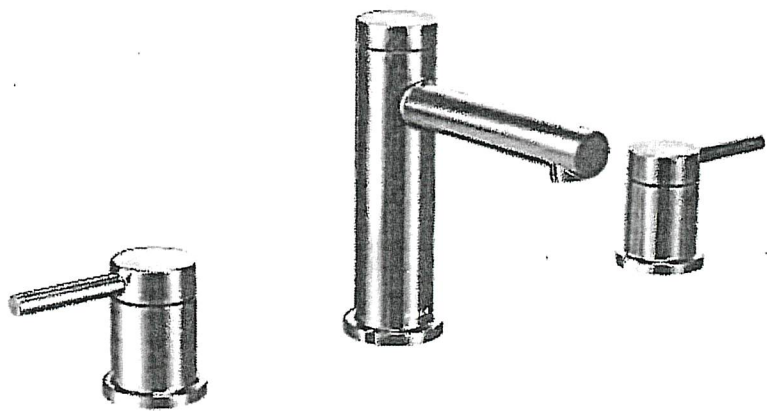
- ☐ CHROME (EP)
- ☒ BRUSHED GOLD (BG)
- ☐ MATTE BLACK (BL)
- ☐ CHROME Tub Drain Half Kit
- ☒ OTHER Tub Drain Half Kit

MODEL: 395 (BG, BL) Freestanding Tub Filler / TS50100 Mounting Kit / T90331 (BG, WR) Tub Drain Half Kit

Lot# PV-1	Date: Dec. 16, 2020	Room: Master Ensuite
Signature:		
Signature:		

MOEN - ALIGN

Two-Handle Adjustable Widespread Lav Faucet with Lift Rod Drain



- ☐ CHROME
- ☒ BRUSHED GOLD (BG)
- ☐ MATTE BLACK (BL)

MODEL: T6193 Lav Faucet / 69000 1/2" IPS Valve

Lot# PV-1	Date: Dec. 16, 2020	Room: Master Ensuite x2
Signature:		
Signature:		

GOEMANS APPLIANCES

Expect More. Get More.

APPLIANCE SPECIFICATIONS



PROJECT PARTNER:
Bill To: 6479692855

SHIP TO:
Ship To: 6479692855

RUMBLE, WINSOME & ERNIE
1 PINE HEIGHT DR LOT
VAUGHAN, ON L4L 1A6

REMINDER:

To ensure a smooth project it is the responsibility of the homeowner / purchaser of appliances to share all the attached specifications with their cabinet provider, contractor, or any other tradesperson so they have the information required to complete their work accurately. Product specifications are for planning purposes only and are subject to change without notice. Refer to installation instructions shipped with the product before cutting cabinets, counters, panels, etc.

Goemans Appliances assumes no liability for product specifications.

Ship To: 6479692855

Bill To: 6479692855

RUMBLE, WINSOME & ERNIE
1 PINE HEIGHT DR LOT
VAUGHAN, ON L4L 1A6

**Goemans Appliances**

goemans.com

BUKHTAWER BUTT

9052641771

Document **V000024728**

Version 1.1

Fri, Jan 7, 2022
2:54 PM EST



enterprise.steelcod.com/sp/goem/UCVMKCE
J

<i>Models</i>	<i>Pages</i>
JS48NFXDE Jenn-Air Refrigeration	4-14
JMC2430IL Jenn-Air Wall Oven	15-22
JJW2430IL Jenn-Air Wall Oven	23-25
W10837579 Jenn-Air Accessory	26-29
JDPSS245LX Jenn-Air Dishwasher	30-32
KCGC506JSS KitchenAid Rangetop	33-41
AVM-368PS Avant Garde Ventilation	42-43
WM4100HBA LG Washer	44-48

Note about page numbers:

Because the original manufacturer's documents are not altered in any way, the page numbers displayed on the page may not correspond to the page number within this package.

All specifications are intended for initial planning purposes only.

Manufacturers reserve the right to change specifications at any time without notice. Always consult the installation instructions found on the manufacturer's website or included with the appliances before installation.

DLEX4200B

LG Dryer

49-54

Note about page numbers:

Because the original manufacturer's documents are not altered in any way, the page numbers displayed on the page may not correspond to the page number within this package.

All specifications are intended for initial planning purposes only.

Manufacturers reserve the right to change specifications at any time without notice. Always consult the installation instructions found on the manufacturer's website or included with the appliances before installation.



48" FULLY INTEGRATED BUILT-IN SIDE-BY-SIDE REFRIGERATOR

Signature Features

OBSIDIAN INTERIOR

Showcases food items throughout the refrigerator, and provides a sharper contrast than white interiors. Includes coordinating crisper drawers and freezer.

FULLY INTEGRATED AND FLUSH DESIGN WITH ARTICULATING HINGE

Blends into custom cabinetry with a truly seamless appearance that ensures the opened door remains within the plane of surrounding cabinetry.

PRECISION TEMPERATURE MANAGEMENT™ SYSTEM

A sensor-controlled system that uses a variable-speed compressor with an independent sensor in each compartment to monitor and adjust temperatures.

Feature Listing

PERFORMANCE FEATURES

Precision Temperature Management™ System

Capacitive Touch Controls with LED Display
Pulsed Defrost
Quiet Operation
Sabbath Mode
Star-K Certified

CONTROL FEATURES

Max Cold Option
Over Temp Alarm
Door Open Alarm
Water Filter with Replace Filter Indicator

REFRIGERATOR FEATURES

Produce Preserver

Advanced Climate Control Drawer
Soft, Auto-Close Crisper Drawers
Gallon Door Storage Bin
Adjustable Elegance Shelving
Adjustable Door Bins with Metal Accents

FREEZER FEATURES

Automatic Ice Maker with Storage Bin
Adjustable Door Bins with Metal Accents

DESIGN FEATURES

Obsidian Interior

Fully Integrated and Flush Design with Articulating Hinge

Multi-Point LED Theater Lighting

Removable Base-Grille Water Filter
90°/110° Door Stop Position

Four-Point Front Leveling

OPTIONAL ACCESSORIES

48" Built-In Side By Side Panel RISE - JS48NXFXDE - JBSFS48NHL
Full Height Panel Kit (Euro-Style Stainless) - JBSFS48NHS
Full Height Panel Kit (Pro-Style® Stainless) - JBSFS48NHP
Pro-Style® Stainless Handle Kit - W10250643
Euro-Style Stainless Steel Handle Kit - W10250640
48" Armoire-Style Door Panel Kit - W10663565
Handle Kit-JA,RISE,BIR,SxS (Qty=2 handles) - W11231243
Handle Kit-JA,NOIR,BIR,SxS (Qty=2 handles) - W11194770
EveryDrop® Filter by Whirlpool Water (Replacement Filter Cartridge) - EDR3RXD1
Produce Preserver Keep Fresh Packet Refill - P1KC6R1
Affresh™ Stainless Steel Cleaner, 16 oz. - W10355016
48" Built-In Side By Side Panel NOIR - JS48NXFXDE - JBSFS48NHHM

Specifications

Shipping Weight (lbs) 649
Volts 115
Amps 15-20
Total Capacity (Cu. Ft. AHAM) 29.2
Refrigerator Capacity (Cu. Ft. AHAM) 18.7
Freezer Capacity (Cu. Ft. AHAM) 10.5

Dimensions

JS48NXFXDE



Style Options

RISE™

JS48NXFXDE with JBSFS48NHL Kit

EURO-STYLE

JS48NXFXDE with JBSFS48NHS Kit

BASE UNIT

JS48NXFXDE

PRO-STYLE®

JS48NXFXDE with JBSFS48NHP Kit

NOIR™

JS48NXFXDE with JBSFS48NHHM Kit

Overall Dimensions 47(3/4)" x 83(1/8)" x 24"

Opening / Clearance Dimensions (Standard
Flush Installation) 48" x 84" x 25"

Opening / Clearance Dimensions (Retrofit
Installation) 48" x 84" x 24"

Do not make any cutouts based on this information



Bold = Top Features

JENNAIR®



48" FULLY INTEGRATED SIDE-BY-SIDE REFRIGERATOR



DETAILED PLANNING DIMENSIONS GUIDE

(BASE UNIT REQUIRES SUITE-COORDINATING FULL HEIGHT PANEL KIT OR CUSTOM PANELS AND HANDLES)

JS48NXXFXDE – 47³/₄" (W) x 83¹/₈" (H) x 24" (depth without door panels/handles)

BASE UNIT + FULL HEIGHT PANEL KIT = FINISHED REFRIGERATOR

Easily transform these overlay refrigerators into one of our signature kitchen suite designs with one of our suite-coordinating stainless steel panel kits. To do so, you must order one of the overlay base units (left column) and one of the suite-coordinating panel kits. The kits include refrigerator and freezer door panels, air grille and pre-installed handles.

Base Unit Model Number	Coordinating Stainless Full Height Panel Kits			
	RISE™ Stainless		NOIR™ Stainless	
Side-by-Side JS48NXXFXDE	JBSFS48NHL		JBSFS48NHM	

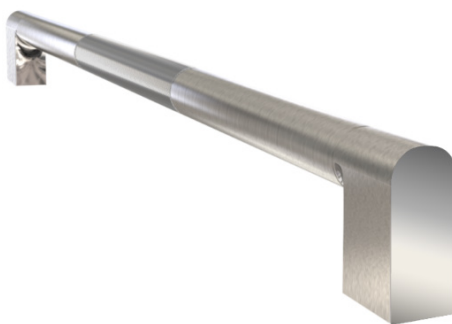
OPTIONAL ACCESSORIES FOR CUSTOM OVERLAY DESIGNS



ARMOIRE-STYLE DOOR PANEL KIT

W10663565 – 48" – Obsidian Interior

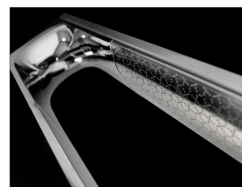
- For use with fully integrated and flush refrigerators
- Enables installation and proper venting of full height custom door panels (not included) that hide the top panel
- Includes left and right grille brackets and machine compartment cover



RISE™ STAINLESS HANDLE KIT

W11231243 – 48" Side-by-Side

- For use with Custom Overlay fully integrated built-in refrigerators



NOIR™ STAINLESS HANDLE KIT

W11194770 – 48" Side-by-Side

- For use with Custom Overlay fully integrated built-in refrigerators

Because Whirlpool Corporation policy includes a continuous commitment to improve our products, we reserve the right to change materials and specifications without notice.

Dimensions are for planning purposes only. For complete details, see Installation Instructions packed with product. Specifications subject to change without notice.



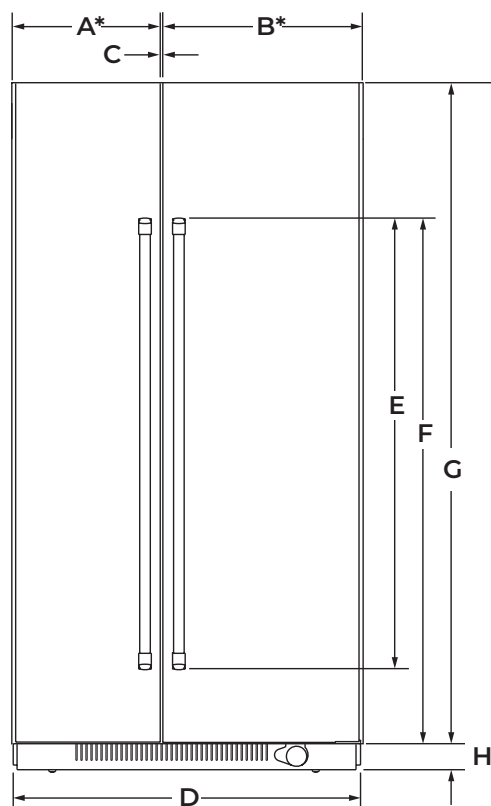
48" FULLY INTEGRATED SIDE-BY-SIDE REFRIGERATOR

DETAILED PLANNING DIMENSIONS GUIDE

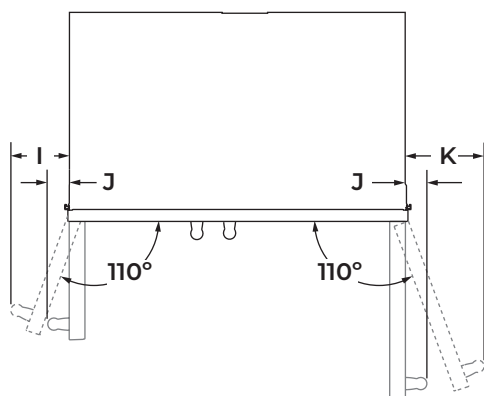
(BASE UNIT REQUIRES SUITE-COORDINATING FULL HEIGHT PANEL KIT OR CUSTOM PANELS AND HANDLES)

JS48NFXDE – 47 $\frac{3}{4}$ " (W) x 83 $\frac{1}{8}$ " (H) x 24" (depth without door panels/handles)

PRODUCT DIMENSIONS (INCLUDING STAINLESS STEEL DOOR PANEL KIT DIMENSIONS)



FRONT VIEW



TOP VIEW

DIMENSION	DESCRIPTION	JS48NFXDE
A*	Width of freezer door	20 $\frac{5}{16}$ " (51.6 cm)
B*	Width of refrigerator door	27 $\frac{5}{16}$ " (69.4 cm)
C	Space between doors	1/8" (0.3 cm)
D	Overall width (including vinyl side trim)	47 $\frac{3}{4}$ " (121.3 cm)
E	Height of door handle	
	RISE™ Stainless	58" (147.3 cm)
	NOIR™ Stainless	40 $\frac{5}{8}$ " (103.2 cm)
F	Height to top of door handle	
	RISE™ Stainless	71 $\frac{11}{16}$ " (182.1 cm)
	NOIR™ Stainless	69 $\frac{13}{16}$ " (177.3 cm)
G	Height of door	81" (205.7 cm)
H	Height of bottom grille	3" (7.6 cm)
I	Width from side of refrigerator to freezer door handle – door fully open 110°	
	RISE™ Stainless	8 $\frac{3}{8}$ " (20.7 cm)
	NOIR™ Stainless	7 $\frac{5}{8}$ " (19.3 cm)
J	Width from side of refrigerator to handle – door open 90°	
	RISE™ Stainless	2 $\frac{3}{8}$ " (6.1 cm)
	NOIR™ Stainless	1 $\frac{5}{8}$ " (4.1 cm)
K	Width from side of refrigerator to refrigerator door handle – door fully open 110°	
	RISE™ Stainless	10 $\frac{9}{16}$ " (26.8 cm)
	NOIR™ Stainless	10 $\frac{1}{16}$ " (25.5 cm)

*Door width dimensions are for stainless steel panel kit only.

Because Whirlpool Corporation policy includes a continuous commitment to improve our products, we reserve the right to change materials and specifications without notice.

Dimensions are for planning purposes only. For complete details, see Installation Instructions packed with product. Specifications subject to change without notice.

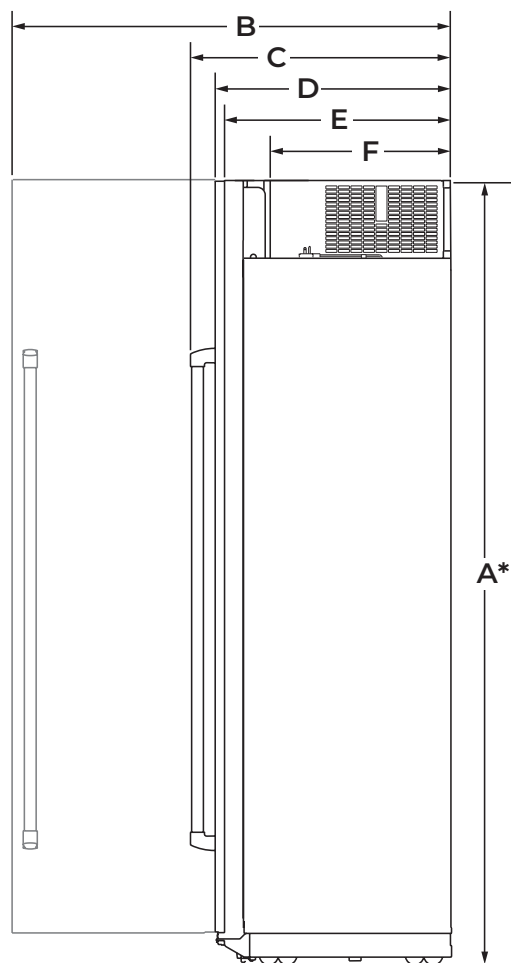


48" FULLY INTEGRATED SIDE-BY-SIDE REFRIGERATOR

DETAILED PLANNING DIMENSIONS GUIDE

(BASE UNIT REQUIRES SUITE-COORDINATING FULL HEIGHT PANEL KIT OR CUSTOM PANELS AND HANDLES)

JS48NFXDE – 47³/₄" (W) x 83¹/₈" (H) x 24" (depth without door panels/handles)



SIDE VIEW

DIMENSION	DESCRIPTION	JS48NFXDE
A*	Height of recessed refrigerator (min.)	83 ¹ / ₈ " (211.1 cm)
B	Depth with refrigerator door open 90° (min.)	50 ³ / ₄ " (128.8 cm)
C	Depth with handles (min.)	
	RISE™ Stainless	27 ¹¹ / ₁₆ " (70.2 cm)
	NOIR™ Stainless	26 ⁷ / ₈ " (68.2 cm)
D	Depth with doors (min.)	
	RISE™ Stainless	24 ³ / ₄ " (62.8 cm)
	NOIR™ Stainless	24 ³ / ₄ " (62.8 cm)
	Custom panel (3/4"/1.9 cm)	24 ³ / ₄ " (62.8 cm)
E	Depth without door panel kit (min.)	24" (61 cm)
F	Depth of compressor cover (min.)	19 ⁷ / ₈ " (50.5 cm)

*Add 1¹/₄" (3.2 cm) to the height dimension when leveling legs are fully extended.



48" FULLY INTEGRATED SIDE-BY-SIDE REFRIGERATOR

DETAILED PLANNING DIMENSIONS GUIDE

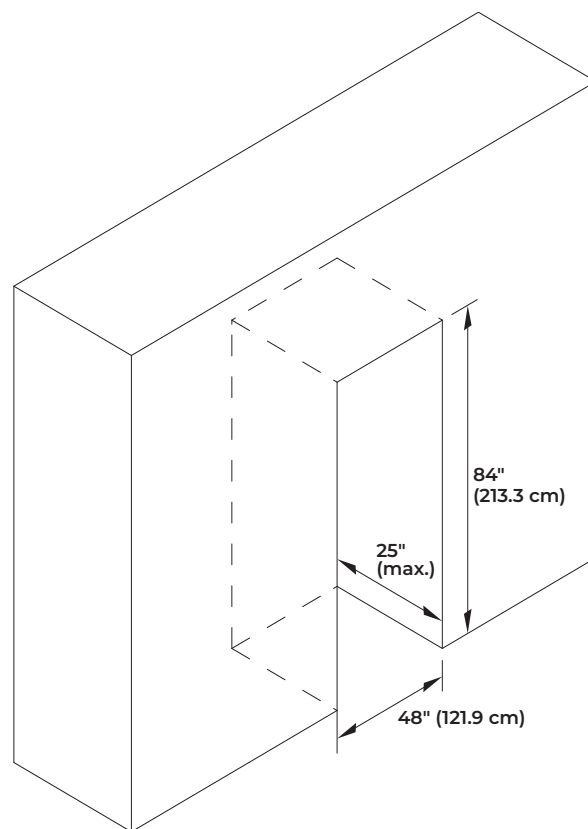
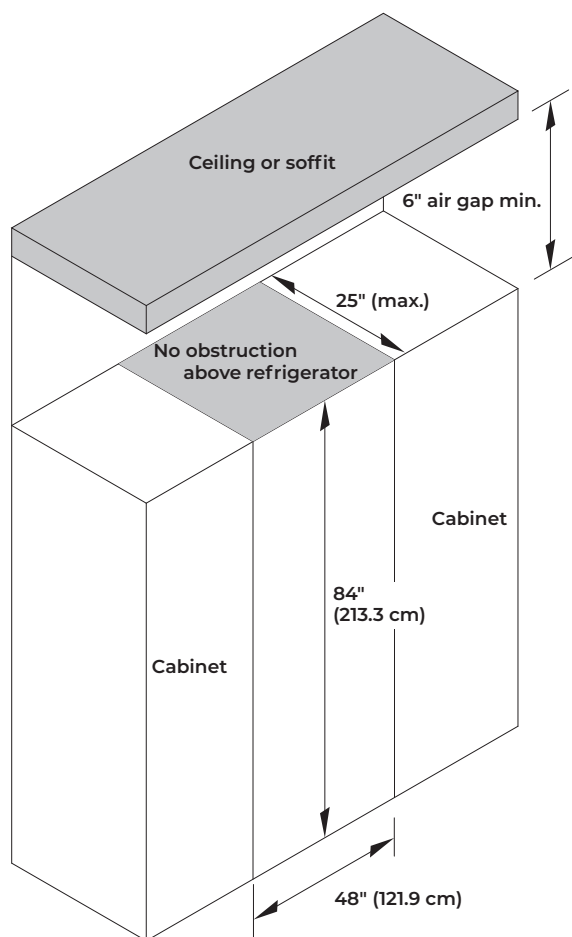
(BASE UNIT REQUIRES SUITE-COORDINATING FULL HEIGHT PANEL KIT OR CUSTOM PANELS AND HANDLES)

JS48NXFXDE – 47 $\frac{3}{4}$ " (W) x 83 $\frac{1}{8}$ " (H) x 24" (depth without door panels/handles)

AIRFLOW VENTING RECOMMENDATIONS

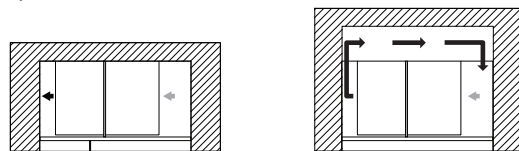
CLOSED SOFFIT CABINET

OPEN TO CEILING OR SOFFIT CABINET

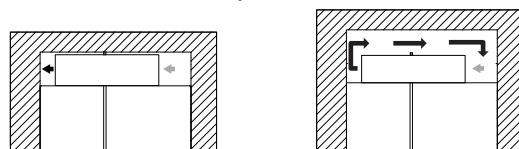


- These type of installations require a minimum of 6" (15.24 cm) of open space above the refrigerator. This space must not be blocked in any way, including soffits.
- Depth of cabinet must be less than 25" (63.5 cm).
- If your opening does not meet these requirements, you will need to make modifications.

- Depth of cabinet must be less than 25" (63.5 cm).
- Height of soffit must not exceed 84" (213.3 cm).
- Following illustrations explain the cabinet construction (soffit and rear wall positions) required for optimum ventilation and airflow.



Top View



Front View

Grey arrow = ambient air; Black arrow = warm air
Cabinet depth 25" and soffit located at 84", provides proper airflow/ventilation to the refrigerator. Efficient cooling is achieved.
Cabinet depth more than 25" and/or soffit located at more than 84", causes air gap at back and/or top of the refrigerator. Air gap allows warm air recirculation causing loss in cooling efficiency.

- If your opening does not meet these requirements, you will need to make modifications.

Because Whirlpool Corporation policy includes a continuous commitment to improve our products, we reserve the right to change materials and specifications without notice.

Dimensions are for planning purposes only. For complete details, see Installation Instructions packed with product. Specifications subject to change without notice.



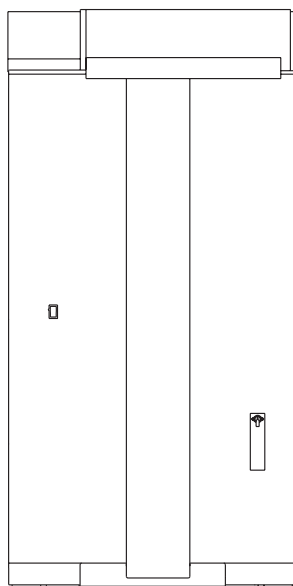
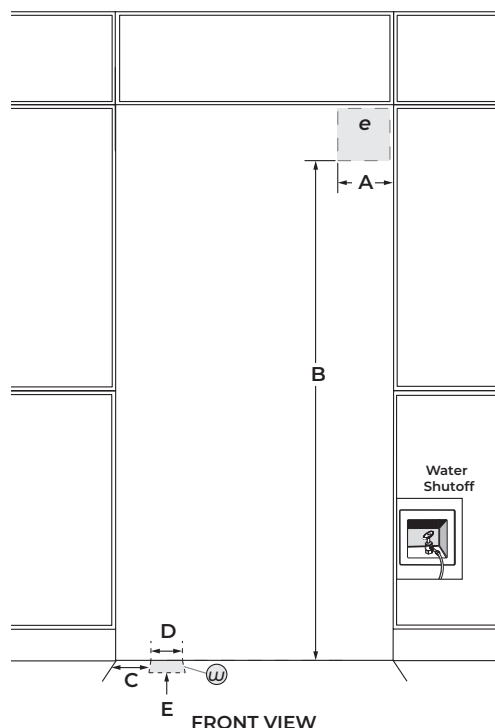
48" FULLY INTEGRATED SIDE-BY-SIDE REFRIGERATOR

DETAILED PLANNING DIMENSIONS GUIDE

(BASE UNIT REQUIRES SUITE-COORDINATING FULL HEIGHT PANEL KIT OR CUSTOM PANELS AND HANDLES)

JS48NXFXDE – 47³/₄" (W) x 83¹/₈" (H) x 24" (depth without door panels/handles)

CLEARANCE DIMENSIONS



DIMENSION	DESCRIPTION	JF42NXFXDE
A	Width of recommended electrical location	7 ¹ / ₂ " (19.1 cm)
B	Height to recommended electrical location	77" (195.6 cm)
C	Distance from side of cabinet to recommended water connection location	6 ¹ / ₂ " (16.5 cm)
D	Width of recommended water location	1 ¹ / ₂ " (3.81 cm)
E	Depth of recommended water connection location (max.)	2" (5 cm)
e	Recommended electrical connection location	
w	Recommended water connection location	

*A minimum 2" (5.1 cm) furniture return must extend behind the face of the cabinet on all sides.

Because Whirlpool Corporation policy includes a continuous commitment to improve our products, we reserve the right to change materials and specifications without notice.

Dimensions are for planning purposes only. For complete details, see Installation Instructions packed with product. Specifications subject to change without notice.

ELECTRICAL REQUIREMENTS

WARNING



Electrical Shock Hazard

Plug into a grounded 3 prong outlet.

Do not remove ground prong.

Do not use an adapter.

Do not use an extension cord.

Failure to follow these instructions can result in death, fire, or electrical shock.

115 V, 60 Hz, AC only, 15 A or 20 A fused, grounded circuit is required. A dedicated circuit is recommended. Use an outlet that cannot be turned off by a switch. Do not use an extension cord.

WATER PRESSURE REQUIREMENTS

A cold water supply with water pressure between 30 psi and 120 psi (207 kPa and 827 kPa) is required to operate the ice maker. Call a licensed, qualified plumber with any questions about the water pressure.

Reverse Osmosis Water Supply

IMPORTANT: The pressure of the water coming out of a reverse osmosis system going to the water inlet valve of the refrigerator needs to be between 30 psi and 120 psi (207 kPa and 827 kPa).

If a reverse osmosis water filtration system is connected to the cold water supply, the water pressure to the reverse osmosis system needs to be a minimum of 40 psi to 60 psi (276 kPa to 414 kPa).

LOCATION REQUIREMENTS

WARNING



Explosion Hazard

Keep flammable materials and vapors, such as gasoline, away from refrigerator.

Failure to do so can result in death, explosion, or fire.

Floor must be able to support refrigerator (more than 600 lb [272 kg]), door panels and contents of the refrigerator and must be at the same level as flooring in the room.

SITE PREPARATION

INSTALLATION REQUIREMENTS

PLAN THE INSTALLATION

IMPORTANT:

- Install the handles on the panels prior to panel installation. Follow the instructions received with handle kit to install the handles.
- Plan your installation using these instructions in conjunction with the Installation Instructions provided with the refrigerator. Modifications must be made to the refrigerator to accommodate the Armoire-style door panels.

Required parts

- One of the following built-in refrigerator models:
 - 42" Side-by-Side: JS42NXFXDE
 - 48" Side-by-Side: JS48NXFXDE
 - 36" Bottom Mount: JB36NXFXLE, JB36NXFXRE
 - 36" French Door Bottom Mount: JF36NXFXDE
 - 42" French Door Bottom Mount: JF42NXFXDE
- Accessory Armoire-Style Door Panel Kit which includes (Grille Assembly and Grille Bracket Assembly)
- Custom Panels

NOTE: The required thickness for all panels is 3/4" (1.91 cm).

OPENING REQUIREMENTS

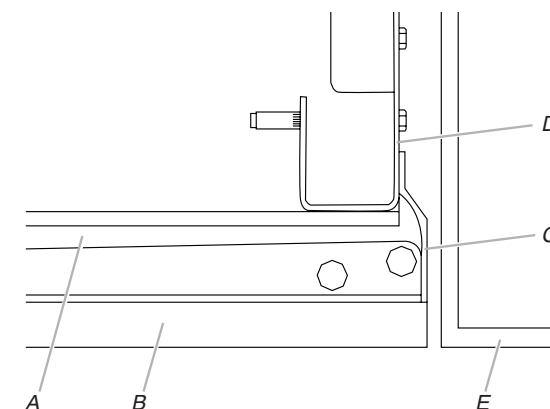
IMPORTANT:

- The width of the opening, from side to side, must be as specified for your model, for at least 3" (7.62 cm) back from the face of the cabinet. If your opening does not meet this requirement, you will need to make modifications.
- The depth of the opening from the front of the cabinet to the back wall must be 25" (63.5 cm) minimum to achieve a flush installation.

CABINET AND PANEL INSTALLATION OPTIONS

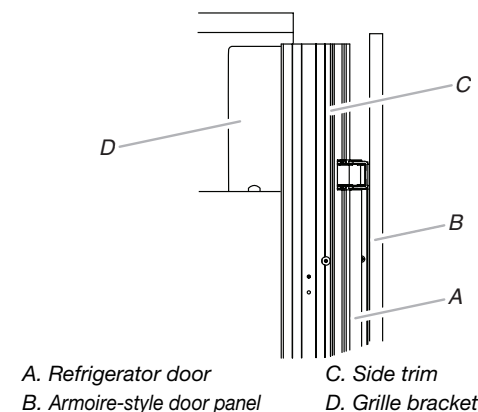
Cabinet Depth - 25" (63.5 cm)

Grille Bracket - Top View



- A. Refrigerator door
- B. Armoire-style door panel
- C. Side trim
- D. Grille bracket
- E. Adjacent cabinet

Grille Bracket - Side View



- A. Refrigerator door
- B. Armoire-style door panel
- C. Side trim
- D. Grille bracket

SITE PREPARATION

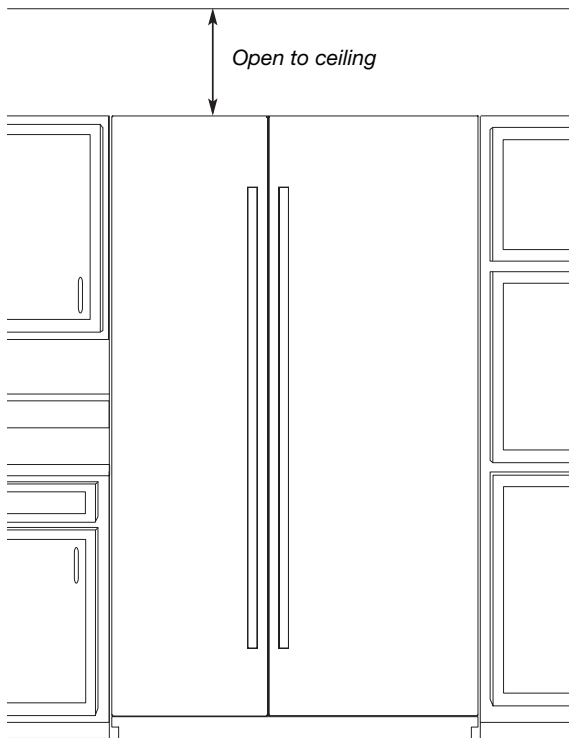
CABINET CUTOUT OPTIONS

AIRFLOW VENTING RECOMMENDATIONS

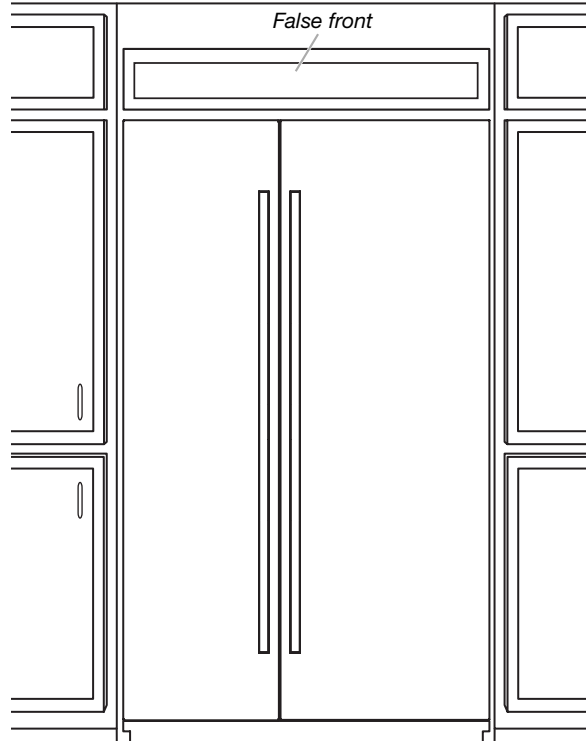
IMPORTANT:

- Armoire-style installations recommends a minimum of 1/8" (3.2 mm) of open space above the refrigerator. It is recommended that this space not be blocked in any way, including soffits.
- Models may be installed using either Option 1, Option 2 or option 3.

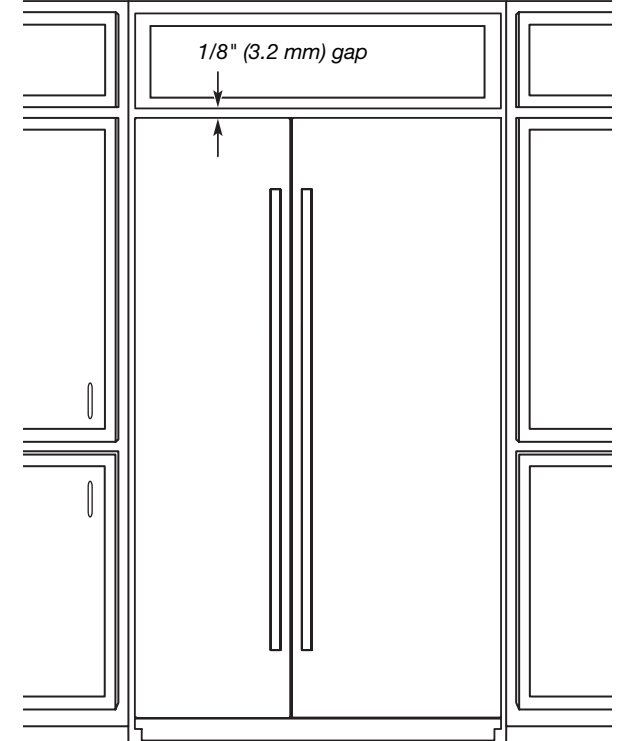
Option 1 - Open to Ceiling



Option 2 - False Front (cabinet face only)



Option 3 - Closed Soffit

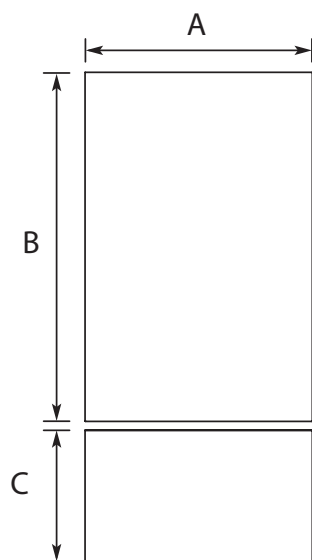


SITE PREPARATION

PANEL DIMENSIONS

BOTTOM MOUNT MODEL

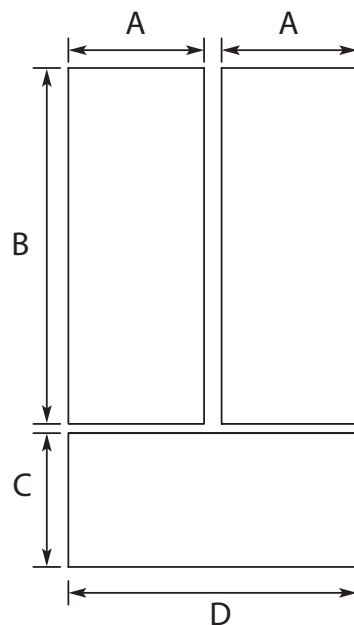
- ! Maximum allowable weights:
- Door panel - 60 lbs (27.2 kg)
 - Drawer panel - 25 lbs (11.3 kg)



Legend	Model	Dimension
A	36"	35 ³ / ₄ " (90.81 cm)
B	36"	59 ¹ / ₈ " (150.2 cm)
C	36"	20 ¹ / ₂ " (52.07 cm)

FRENCH DOOR BOTTOM MOUNT MODELS

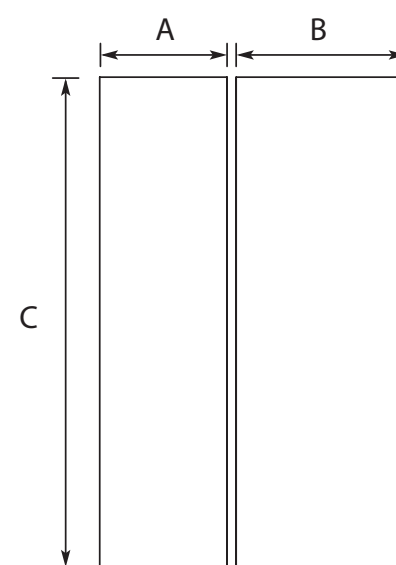
- ! Maximum allowable weights:
- Door panel - 38 lbs (17.2 kg)
 - Drawer panel (36" model) - 25 lbs (11.3 kg)
 - Drawer panel (42" model) - 30 lbs (13.6 kg)



Legend	Model	Dimension
A	36"	17 ³ / ₄ " (45.24 cm)
B		59 ¹ / ₈ " (150.2 cm)
C		20 ¹ / ₂ " (52.07 cm)
D		35 ³ / ₄ " (90.81 cm)
A	42"	20 ³ / ₄ " (52.86 cm)
B		59 ¹ / ₈ " (150.2 cm)
C		20 ¹ / ₂ " (52.07 cm)
D		41 ³ / ₄ " (106.05 cm)

SIDE BY SIDE MODELS

- ! Maximum allowable weights (42" models):
- Refrigerator Door panel - 65 lbs (29.5 kg)
 - Freezer Door panel - 49 lbs (22.2 kg)
- Maximum allowable weights (48" models):
- Refrigerator Door panel - 66 lbs (29.9 kg)
 - Freezer Door panel - 50 lbs (23 kg)



Legend	Model	Dimension
A	42"	17 ³ / ₄ " (45.24 cm)
B		23 ³ / ₄ " (60.48 cm)
C		81" (205.7 cm)
A	48"	20 ¹ / ₄ " (51.59 cm)
B		27 ¹ / ₄ " (69.37 cm)
C		81" (205.7 cm)



RISE™ 30" BUILT-IN MICROWAVE OVEN WITH SPEED-COOK

Signature Features

4.3-INCH FULL COLOR LCD DISPLAY

A highly interactive, full-color LCD touchscreen is packed with dynamic features that allow you to navigate effortlessly through settings and cooking options including temperature and cooking mode.

SMOOTH CLOSE DOOR

Quiet, soft, secure. Your oven gently pulls the door closed.

1,200-WATT CONVECTION ELEMENT

This 1,200-watt element surrounds your cravings with circulating, consistent heat until baked to your satisfaction.

SEAMLESS TOUCHES

Seamlessly designed. Concealed details melt into their stainless steel surround, as shiny interiors and glass expanses pull you in.

1.4 CU. FT. MICROWAVE CAPACITY

Explore your options. There's room for whatever you're craving.

900-WATT MICROWAVE ELEMENT

Harness 900 watts of microwave energy to rapidly cook and reheat a variety of foods.

STAINLESS STEEL MICROWAVE INTERIOR

Wrapped in luminous steel, intrinsic beauty is reflected in every corner.

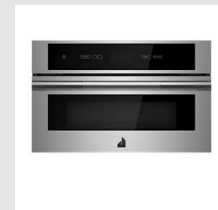
CONVECTION & MICROWAVE COMBINATION COOKING

Let your appetite run wild—broil, bake or warm with convection and microwave energy.

SPEED-COOK

Renounce accepted limitations of the microwave. Three potent methods converge to deliver convection's steady heat, microwave speed and broiled caramelization in each oven-caliber bite.

JMC2430IL



Dimensions

Capacity: 1-2/5

Depth With Door Open 90 Degree: 35-5/8 in

Controls

Number of Quick Touch/One-Touch Selections: 1

Convenience Cooking Controls: Yes

Design Type

Design Expression: RISE™

Electrical

Hz: 60

Watts: 3300

Technical Specifications

Configuration and Overview

Size: 30 in

Microwave Type: Built-In

CUL: Yes

Prop 65: Standard

Microwave Details

Scrolling Electronic Display: No

Sensor Cooking: Yes

Microwave Details

Microwave Selections:

- Add 30 Seconds
- Auto Cook
- Beverage
- Control Lock
- Convection
- Cook
- Cook Power
- Cook Time
- Crisp Pan
- Defrost
- Dinner Plate
- End of Cycle Signal
- Fresh Vegetable
- Frozen Vegetable
- Frozen Entree
- Grill
- Keep Warm
- Kids Menu
- Languages - English/French
- Off/Cancel
- Pizza
- Popcorn
- Potato
- Reheat
- Soften/Melt
- Sound On/Off
- Soup
- Speed Cook
- Steam

Cooking Power: 900 w

Cavity Finish: Stainless

Convection: Yes

Convection Power: 1200 w

Grill: Yes



RISE™ 30" BUILT-IN MICROWAVE OVEN WITH SPEED-COOK

Grill Power: 1600.0 w

Interior Light: No

Number of Racks: 1

Turntable: Stoppable

Turntable Diameter Size: 14-1/8 in

Details

Number of Power Levels: 10

Clock: Yes

Night Light: No

Certifications

ADA Compliant: ADA Height and Side and Front
Reach Compliant

Compatibility

Connectivity: No

Configuration

Microwave Configuration: Built-In

INSTALLATION INSTRUCTIONS 27" (68.6 CM) AND 30" (76.2 CM) ELECTRIC BUILT-IN MICROWAVE OVEN FLUSH INSTALLATION KIT

INSTRUCTIONS D'INSTALLATION POUR ENSEMBLE D'INSTALLATION EN AFFLEUREMENT DE FOUR À MICRO-ONDES ÉLECTRIQUE ENCASTRÉ DE 27" (68,6 CM) ET 30" (76,2 CM)

27" (68.6 cm) Flush Installation Kits Ensembles d'installation en affleurement de 27" (68,6 cm)

	Stainless Steel Acier inoxydable	Stainless Steel/ Acier inoxydable, RISE™/NOIR™
Model#/ Modèle n°	Kit PN/ Ensemble référence: W10801485	Kit PN/ Ensemble référence: W11358283
JMC2427DS	★★	*
JMC2427IM, JMC2427IL	*	★★

30" (76.2 cm) Flush Installation Kits Ensembles d'installation en affleurement de 30" (76,2 cm)

	Black Noir	Stainless Steel/ Acier inoxydable	Stainless Steel/ Acier inoxydable, RISE™/NOIR™
Model#/ Modèle n°	Kit PN/ Ensemble référence: W10801487	Kit PN/ Ensemble référence: W10801486	Kit PN/ Ensemble référence: W11358282
JMC2430DB	★★	*	*
JMC2430DP, JMC2430DS	*	★★	*
JMC2430IM, JMC2430IL	*	*	★★

* Approved for use.

★★ Recommended color and approved for use.

* Approuvé pour l'utilisation.

★★ Couleur recommandée et approuvé pour l'utilisation.

Table of Contents/Table des matières

BUILT-IN MICROWAVE OVEN SAFETY	2	SÉCURITÉ DU FOUR À MICRO-ONDES ENCASTRÉ	5
INSTALLATION REQUIREMENTS	2	EXIGENCES D'INSTALLATION	5
Tools and Parts.....	2	Outillage et pièces.....	5
Location Requirements	2	Exigences d'emplacement.....	5
INSTALLATION INSTRUCTIONS	4	INSTRUCTIONS D'INSTALLATION	7
Prepare Built-In Oven.....	4	Assemblage de la trousse d'entretoise	7
Install Spacer Kit	4	Installation de la trousse d'entretoise	7
Install Microwave Oven	4	Installation du four à micro-ondes	7
Complete Installation	4	Achever l'installation	7

IMPORTANT:

Save for local electrical inspector's use.

IMPORTANT:

À conserver pour consultation par l'inspecteur local des installations électriques.

W11356316A

In some European factories the letter "W" of the part code mentioned herein will be automatically replaced by the number "4000" (e.g. "W12345678" becomes "400012345678")

BUILT-IN MICROWAVE OVEN SAFETY

Your safety and the safety of others are very important.

We have provided many important safety messages in this manual and on your appliance. Always read and obey all safety messages.



This is the safety alert symbol.

This symbol alerts you to potential hazards that can kill or hurt you and others.

All safety messages will follow the safety alert symbol and either the word "DANGER" or "WARNING."

These words mean:

⚠ DANGER

You can be killed or seriously injured if you don't immediately follow instructions.

⚠ WARNING

You can be killed or seriously injured if you don't follow instructions.

All safety messages will tell you what the potential hazard is, tell you how to reduce the chance of injury, and tell you what can happen if the instructions are not followed.

INSTALLATION REQUIREMENTS

Tools and Parts

Gather the required tools and parts before starting installation. Read and follow the instructions provided with any tools listed here.

Tools Needed

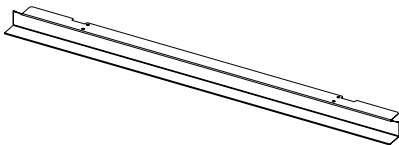
- Phillips screwdriver
- 1/4" (6.3 mm) nut driver
- Measuring tape
- Level
- Drill
- 1/8" (3.1 mm) drill bit

Parts Needed

- (2) Spacer bars - included with built-in microwave oven
- (4) Hex-head washer screws - included with built-in microwave oven
- (4) Pan-head screws - included with built-in microwave oven

Parts Supplied

- Bottom vent



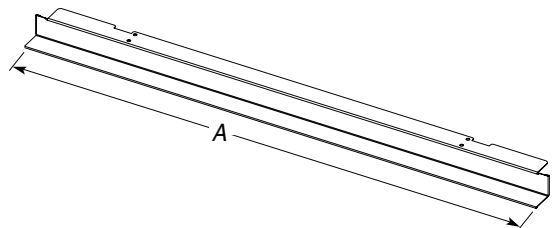
Location Requirements

IMPORTANT: Observe all governing codes and ordinances.

- Cabinet opening dimensions that are shown must be used. Given dimensions provide minimum clearance with the microwave oven.
- Recessed installation area must provide complete enclosure around the recessed portion of the microwave oven.
- Microwave oven support surface must be solid, level and flush with the bottom of the cabinet cutout. Floor must be able to support a weight of 108 lbs (49 kg).

IMPORTANT: To avoid damage to your cabinets, check with your builder or cabinet supplier to make sure that the materials used will not discolor, delaminate or sustain other damage. This oven has been designed in accordance with the requirements of UL and CSA International and complies with the maximum allowable wood cabinet temperatures of 194°F (90°C).

Bottom Vent Dimensions



27" (68.6 cm) Models

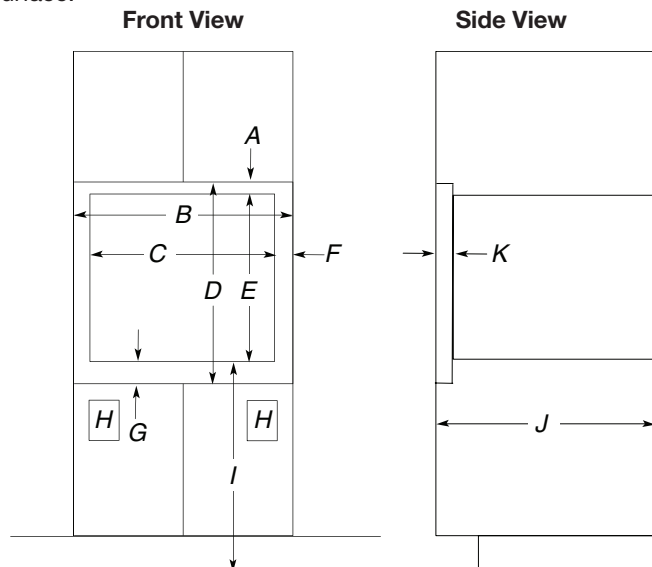
A. 26³/₄" (67.9 cm) overall width

30" (76.2 cm) Models

A. 29³/₄" (75.6 cm) overall width

Cabinet Dimensions - Flush Installation

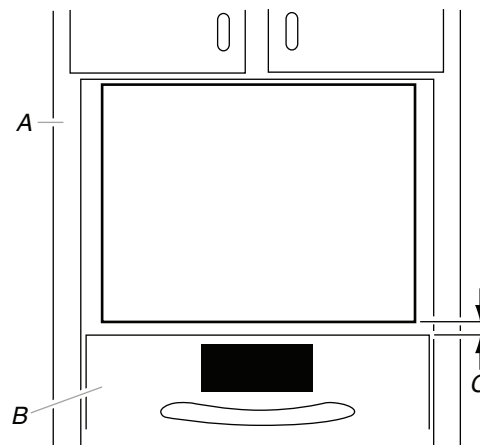
A 23¹/₄" (59 cm) minimum cutout depth is required. These dimensions will result in a 1/4" (6.3 mm) reveal on the top, a 1/4" (6.3 mm) reveal on the sides, and a 1/8" (3.1 mm) reveal on the bottom of the microwave oven. The front face of the cleats and platform will be visible and should be treated as a finished surface.



Minimum Installation Clearances

For proper installation, the following minimum clearances must exist below the cabinet opening.

Installation Above Single Built-In Oven



- A. Upper cabinet
- B. Lower single oven*
- C. 1" (2.5 cm) from top of oven

27" (68.6 cm) Models

- A. 1¹³/₁₆" (4.7 cm) top cleat*
- B. 27¹/₄" (69.2 cm) minimum width of flush inset cutout
- C. 25⁷/₈" (65.7 cm) minimum width of opening
- D. 20³/₁₆" (51.3 cm) minimum height of flush inset cutout
- E. 17⁵/₈" (44.7 cm) recommended cutout height
- F. 11/16" (1.7 cm) side cleat*
- G. 3/4" (1.9 cm) bottom cleat*
- H. Recommended junction box location
- I. 40" (101.6 cm) bottom of cutout to floor (recommended)
- J. 23¹/₄" (59.0 cm) minimum depth of cutout
- K. 1³/₈" (3.5 cm) recess from front of cabinet

30" (76.2 cm) Models

- A. 1¹³/₁₆" (4.7 cm) top cleat*
- B. 30¹/₄" (76.8 cm) minimum width of flush inset cutout
- C. 28⁷/₈" (70.8 cm) minimum width of opening
- D. 20³/₁₆" (51.3 cm) minimum height of flush inset cutout
- E. 17⁵/₈" (44.7 cm) recommended cutout height
- F. 11/16" (1.7 cm) side cleat*
- G. 3/4" (1.9 cm) bottom cleat*
- H. Recommended junction box location
- I. 40" (101.6 cm) bottom of cutout to floor (recommended)
- J. 23¹/₄" (59.0 cm) minimum depth of cutout
- K. 1³/₈" (3.5 cm) recess from front of cabinet

*Cleats must be recessed 1³/₈" (3.5 cm) from the front of the cabinet.

INSTALLATION REQUIREMENTS

Tools and Parts

Gather the required tools and parts before starting installation. Read and follow the instructions provided with any tools listed here.

Tools Needed

- Phillips screwdriver
- Flat-blade screwdriver
- Measuring tape
- Level
- Drill (for wall cabinet installations)
- 1/8" (3 mm) drill bit (for wall cabinet installations)
- 1" (2.5 cm) drill bit (for wall cabinet installations)

Parts Needed

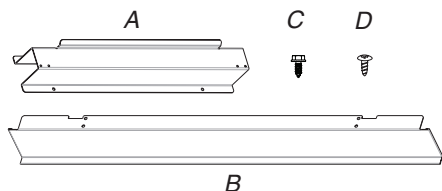
- UL listed or CSA approved conduit connector
- UL listed wire connectors

Parts Needed – Flush Installation

- W10801485 Stainless steel flush installation kit for 27" (68.6 cm) models
- W10801486 Stainless steel flush installation kit for 30" (76.2 cm) models
- W10801487 Black flush installation kit for 30" (76.2 cm) models

To order, see the "Assistance or Service" section of the Use and Care Guide.

Parts Supplied



- A. Spacer bars (2)
- B. Bottom vent (1)
- C. 3/8" (9.5 mm) hex-head washer screws (4)
- D. 3/4" (1.9 cm) pan-head screws (4)

Check local codes. Check existing electrical supply. See "Electrical Requirements."

It is recommended that all electrical connections be made by a licensed, qualified electrical installer.

Location Requirements

IMPORTANT: Observe all governing codes and ordinances.

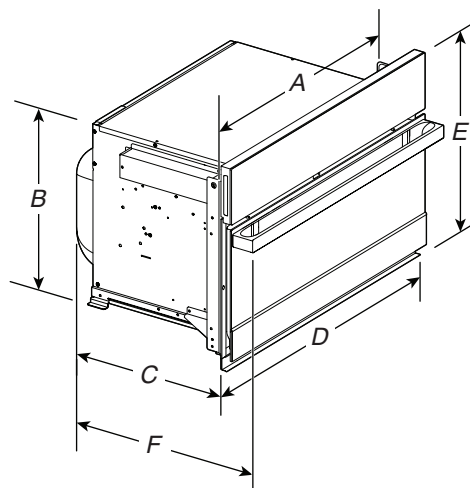
- Cabinet opening dimensions that are shown must be used. Given dimensions provide minimum clearance with microwave oven.
- Recessed installation area must provide complete enclosure around the recessed portion of the microwave oven.
- Grounded electrical supply is required. See "Electrical Requirements" section.
- Electrical supply junction box should be located 3" (7.6 cm) maximum below the support surface when the microwave oven is installed in a wall cabinet. A 1" (2.5 cm) minimum diameter hole should have been drilled in the left rear corner of the support surface to pass the appliance cable through to the junction box.

- For installation above single built-in oven, the junction box must located inside upper cabinet.
- If you are installing the junction box on rear wall behind the microwave oven, the junction box must be recessed and located in the upper or lower right or left corner of the cabinet; otherwise, the microwave oven will not fit into the cabinet opening.
- Microwave oven support surface must be solid, level, and flush with bottom of cabinet cutout. Floor must be able to support a weight of 108 lbs (49.0 kg).

IMPORTANT: To avoid damage to your cabinets, check with your builder or cabinet supplier to make sure that the materials used will not discolor, delaminate, or sustain other damage. This oven has been designed in accordance with the requirements of UL and CSA International and complies with the maximum allowable wood cabinet temperatures of 194°F (90°C).

Product Dimensions

27" (68.6 cm) and 30" (76.2 cm) Microwave Ovens



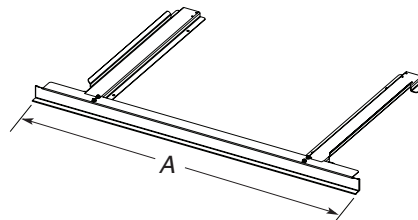
27" (68.6 cm) models

- A. 25³/₈" (64.5 cm)
- B. 17³/₈" (44.1 cm)
- C. 22¹¹/₁₆" (57.7 cm)
- D. 26³/₄" (68.0 cm) overall width
- E. 19⁷/₈" (50.3 cm) overall height
- F. JMC2427IM: 25⁹/₁₆" (64.9 cm)
JMC2427IL: 24³/₄" (62.9 cm)

30" (76.2 cm) models

- A. 28³/₈" (72.1 cm)
- B. 17³/₈" (44.1 cm)
- C. 22¹¹/₁₆" (57.7 cm)
- D. 29³/₄" (75.6 cm) overall width
- E. 19⁷/₈" (50.3 cm) overall height
- F. JMC2430IM: 25⁹/₁₆" (64.9 cm)
JMC2430IL: 24³/₄" (62.9 cm)

27" (68.6 cm) and 30" (76.2 cm) Microwave Oven Spacer Kit



27" (68.6 cm) models

- A. 26³/₄" (67.9 cm) overall width

30" (76.2 cm) models

- A. 29³/₄" (75.6 cm) overall width

NOTE: The microwave oven spacer kit will allow the microwave oven to be installed in a 17³/₈" to 17³/₄" (44.1 to 45.1 cm) maximum cutout height.

A microwave oven spacer kit is available from your dealer that will allow the microwave oven to be installed in a 19" to 19^{13/16}" (48.3 to 50.2 cm) maximum cutout height. Match the oven size to the following kits:

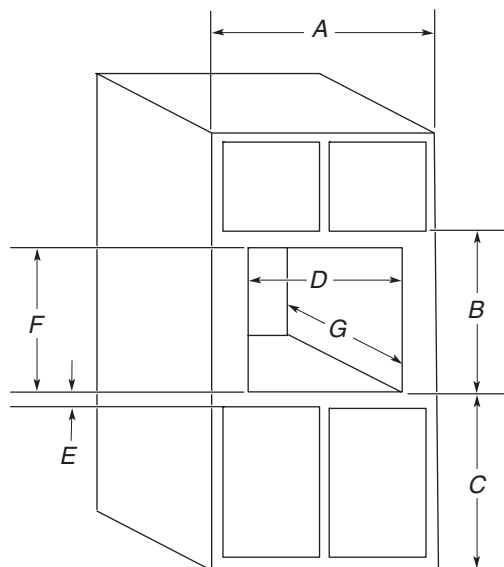
■ 27" (68.6 cm) Stainless Steel – Model W10469901

■ 30" (76.2 cm) Stainless Steel – Model W10469903

To order, see the "Assistance or Service" section of the Use and Care Guide.

Cabinet Dimensions

27" (68.6 cm) and 30" (76.2 cm) Microwave Ovens



27" (68.6 cm) models

- A. 27" (68.6 cm) min. cabinet width
- B. 19^{7/8}" (50.3 cm) from bottom of cutout to bottom of upper cabinet door
- C. 40" (101.6 cm) bottom of cutout to floor (recommended)
- D. 25^{1/2}" (64.8 cm) cutout width
- E. 1^{1/2}" (3.8 cm) min. bottom of cutout to top of cabinet door
- F. 17^{5/8}" (44.7 cm) recommended cutout height (will fit cutout height from 17^{3/8}" [44.1 cm] to 17^{3/4}" [45.1 cm])
- G. 21^{7/8}" (55.5 cm) min. cutout depth

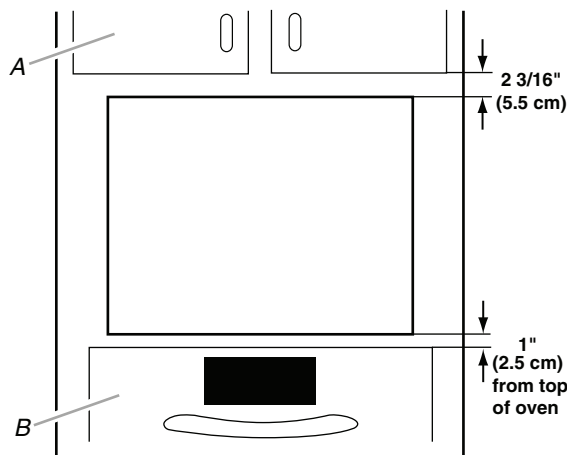
30" (76.2 cm) models

- A. 30" (76.2 cm) min. cabinet width
- B. 19^{7/8}" (50.3 cm) from bottom of cutout to bottom of upper cabinet door
- C. 40" (101.6 cm) bottom of cutout to floor (recommended)
- D. 28^{1/2}" (72.4 cm) cutout width
- E. 1^{1/2}" (3.8 cm) min. bottom of cutout to top of cabinet door
- F. 17^{5/8}" (44.7 cm) recommended cutout height (will fit cutout height from 17^{3/8}" [44.1 cm] to 17^{3/4}" [45.1 cm])
- G. 21^{7/8}" (55.5 cm) min. cutout depth

Minimum Installation Clearances

For proper installation, the following minimum clearances must exist above and below the cabinet opening.

Installation Above Single Built-In Oven



A. Upper cabinet
B. Lower single oven

Electrical Requirements

GROUNDING INSTRUCTIONS

For a permanently connected microwave oven:

The microwave oven must be connected to a grounded, metallic, permanent wiring system, or an equipment grounding conductor should be run with the circuit conductors and connected to the equipment grounding terminal or lead on the microwave oven.

SAVE THESE INSTRUCTIONS

If codes permit and a separate ground wire is used, it is recommended that a qualified electrical installer determine that the ground path and wire gauge are in accordance with local codes.

Check with a qualified electrical installer if you are not sure the oven is properly grounded.

This oven must be connected to a grounded metal, permanent wiring system.

Be sure that the electrical connection and wire size are adequate and in conformance with the National Electrical Code, ANSI/NFPA 70 – latest edition or CSA Standards C22.1-94, Canadian Electrical Code, Part 1 and C22.2 No. O-M91 – latest edition, and all local codes and ordinances.

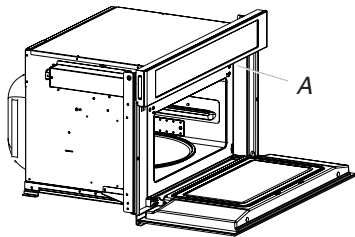
A copy of the above code standards can be obtained from:

National Fire Protection Association
1 Batterymarch Park
Quincy, MA 02169-7471
CSA International
8501 East Pleasant Valley Road
Cleveland, OH 44131-5575

Electrical Connection

To properly install your microwave oven, you must determine the type of electrical connection you will be using and follow the instructions provided for it here.

- Microwave oven must be connected to the proper electrical voltage and frequency as specified on the model/serial/rating plate. The model/serial/rating plate is located underneath the control panel along the oven vent.



A. Model/serial/rating plate

- The microwave oven rated 120/240 V, 20 A, has 4 wires (L1, L2, N, and G) in the flex conduit, and should be connected to a 20 A maximum-rated circuit, overcurrent protected on both the L1 and L2 circuits.
- A time-delay fuse or circuit breaker is recommended.
- Flexible cable from the microwave oven should be connected directly to the junction box.

- Do not cut the conduit. The length of conduit provided is for serviceability of the microwave oven.
- A UL listed or CSA approved conduit connector must be provided.
- If the house has aluminum wiring, follow the procedure below:

Connect the aluminum wiring using special connectors and/or tools designed and UL listed for joining copper to aluminum.

Follow the electrical connector manufacturer's recommended procedure. Aluminum/copper connection must conform with local codes and industry accepted wiring practices.

For power requirements, refer to the following table:

Voltage	Microwave With Convection Oven
120/240 VAC	15 A
120/208 VAC	15 A

INSTALLATION INSTRUCTIONS

Spacer Kit Installation

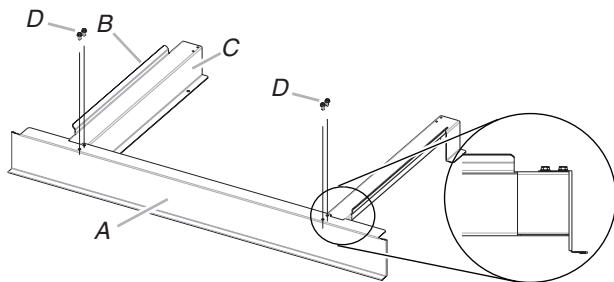
NOTES:

- The microwave oven spacer kit allows the microwave oven to be installed in an $17\frac{7}{16}$ " to $17\frac{7}{8}$ " (44.1 cm to 45.3 cm) maximum cutout height.
- If your cabinet cutout height is more than $17\frac{7}{16}$ " (44.1 cm), you must install the spacer kit. Proceed to "Assemble Spacer Kit."
- If your cabinet cutout height is less than $17\frac{7}{16}$ " (44.1 cm), you do not have to install the spacer kit. Proceed to "Prepare Built-In Microwave Oven."

Assemble Spacer Kit

1. Attach the bottom vent to spacer bars using four $\frac{3}{8}$ " (9.5 mm) hex-head washer screws.

NOTE: Spacer bar flanges should be facing out.

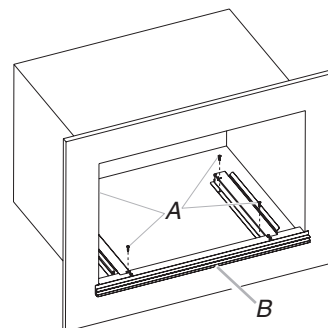


A. Bottom vent
B. Spacer bar flange
C. Spacer bars
D. $\frac{3}{8}$ " (9.5 mm) hex-head washer screws

Install Spacer Kit

1. Center assembled microwave oven spacer kit against lower front edge of the cabinet cutout.
2. Using an $\frac{1}{8}$ " (3.2 mm) drill bit, drill through the mounting holes in the spacer bars to create pilot holes.

3. Attach the assembled spacer kit to the cabinet using four $\frac{3}{4}$ " (1.9 cm) (flat-head screws. Do not overtighten screws.



A. $\frac{3}{4}$ " (1.9 cm) flat-head screws
B. Spacer kit assembly

Prepare Built-In Microwave Oven

1. Locate existing wiring to avoid drilling into or severing wiring during installation.

⚠ WARNING

Excessive Weight Hazard

Use two or more people to move and install microwave oven.

Failure to do so can result in back or other injury.

2. To avoid floor damage, set the microwave oven onto cardboard prior to installation. Do not use handle or any portion of the front frame for lifting.
3. Remove the shipping materials and tape from the microwave oven.
4. Remove and set aside racks and other items from inside the microwave oven.
5. Remove the hardware package from inside the bag containing literature.
6. Move the microwave oven and cardboard close to the microwave oven's final location.



30" SINGLE WALL OVEN WITH MULTIMODE[®] CONVECTION SYSTEM

Signature Features

MULTIMODE[®] CONVECTION SYSTEM

Steady heat produced by three elements is circulated by whirling metal blades, weaving around every flat tine. Wield your cooking prowess from marbled meats to succulent roasts.

MY CREATIONS

Curate recipe presets at will. Bake for 30 minutes, broil for 4 and keep dishes warm until you're ready to dine—all without lifting a finger.

IRRESISTIBLE INTERIOR

Captivation cloaked in black. Beyond a dark glass expanse, cinematic lighting illuminates smooth racks, flat tines, and an enticing jet black interior.

Feature Listing

DESIGN & CRAFTSMANSHIP

Irresistible Interior

4.3-Inch Full Color LCD Display

Cinematic Lighting
Seamless Touches
Glide Rack
Smooth Close Door
5.0 Cu. Ft. Capacity

PERFORMANCE

MultiMode[®] Convection System

My Creations

Closed Door Broiling
Versatile Modes
3,200-Watt Convection Element
2,800-Watt Hidden Bake Element
4,000-Watt Broil Element
8-Pass Reflective Broil Element
Temperature Probe

ADDITIONAL FEATURES

Keep Warm[™] Option
Auto Convection Conversion
Auto Convection Modes
Manual Convection Modes
Rapid Preheat
Proofing Option
Control Lock
Sabbath Mode
ADA Compliant
Badasses at the Ready
Serviced by a Select Few

Specifications

Shipping Weight (lbs) 184
Volts 240
Amps 20
Capacity (Cu. Ft.) 5.0

Dimensions

Overall Dimensions 30" x 29(7/8)" x 25(5/16)"
Opening / Clearance Dimensions (Traditional Installation) 28(1/2)" x 28" x 24"
Opening / Clearance Dimensions (Flush Installation) 30(1/4)" x 30(7/16)" x 25"

Do not make any cutouts based on this information

JJW2430I



Style Options

RISE[™]

JJW2430IL

NOIR[™]

JJW2430IM



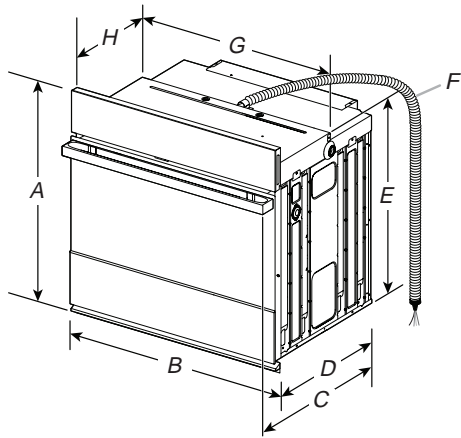
Bold = Top Features

JENNAIR[®]

SINGLE WALL OVENS

JJW2427I – 27" x 29-7/8" x 25-5/16"

JJW2430I, JJW3430I – 30" x 29-7/8" x 25-5/16"



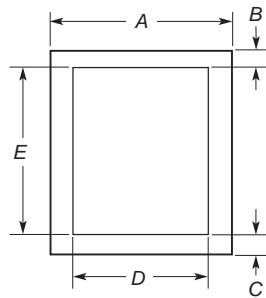
PRODUCT DIMENSIONS – SINGLE OVENS

27" (68.6 CM) MODELS

- A. 29-7/8" (75.8 cm) max. overall height
- B. 27" (68.6 cm) overall width
- C. JJW2427IM – 26-3/8" (67 cm)
JJW2427IL – 27-3/16" (69 cm)
- D. 23-1/4" (59.1 cm) max. recessed depth
- E. 27-3/16" (69 cm) recessed height
- F. 48" (121.9 cm) flexible conduit length
- G. 25-7/16" (64.6 cm) max. recessed width
- H. 12" (30.5 cm) from back of control panel to start of strain relief

30" (76.2 CM) MODELS

- A. 29-7/8" (75.8 cm) max. overall height
- B. 30" (76.2 cm) overall width
- C. JJW2430IM – 26-3/8" (67 cm)
JJW2430IL – 27-3/16" (69 cm)
JJW3430IM – 26-3/8" (67 cm)
JJW3430IL – 27-3/16" (69 cm)
- D. 23-1/4" (59.1 cm) max. recessed depth
- E. 27-3/16" (69 cm)
- F. 48" (121.9 cm) flexible conduit length
- G. 28-7/16" (72.2 cm) max. recessed width
- H. 12" (30.5 cm) from back of control panel to start of strain relief



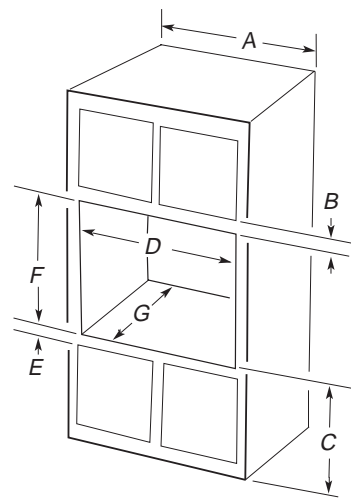
UNDERCOUNTER CABINET DIMENSIONS – SINGLE OVENS

27" (68.6 CM) MODELS

- A. 27" (68.6 cm) min. cabinet width
- B. 1-1/2" (3.8 cm) min. top of cutout to underside of countertop
- C. 5-1/4" (13.3 cm) bottom of cutout to floor
- D. 25-1/2" (64.8 cm) cutout width
- E. 28" (71.2 cm) min. cutout height

30" (76.2 CM) MODELS

- A. 30" (76.2 cm) min. cabinet width
- B. 1-1/2" (3.8 cm) min. top of cutout to underside of countertop
- C. 5-1/4" (13.3 cm) bottom of cutout to floor
- D. 28-1/2" (72.4 cm) cutout width
- E. 28" (71.2 cm) min. cutout height



SINGLE OVENS INSTALLED IN CABINET

27" (68.6 CM) MODELS

- A. 27" (68.6 cm) min. cabinet width
- B. 2-3/16" (5.5 cm) top of cutout to bottom of upper cabinet door
- C. 32" (81.3 cm) bottom of cutout to floor
- D. 25-1/2" (64.8 cm) cutout width
- E. 1-1/2" (3.8 cm) min. bottom of cutout to top of cabinet door
- F. 28" (71.2 cm)* recommended cutout height
- G. 24" (60.7 cm) cutout depth

***NOTE:** The cutout height can be between 27-1/4" (69.2cm) and 29-7/16" (74.8 cm) for 27" single ovens.

30" (76.2 CM) MODELS

- A. 30" (76.2 cm) min. cabinet width
- B. 2-3/16" (5.5 cm) top of cutout to bottom of upper cabinet door
- C. 32" (81.3 cm) bottom of cutout to floor
- D. 28-1/2" (72.4 cm) cutout width
- E. 1-1/2" (3.8 cm) min. bottom of cutout to top of cabinet door
- F. 28" (71.2 cm)* recommended cutout height
- G. 24" (60.7 cm) cutout depth

***NOTE:** The cutout height can be between 27-1/4" (69.2 cm) and 29-7/16" (74.8 cm) for 30" single ovens.

IMPORTANT: Dimensional specifications are provided for planning purposes only.

Do not make any cutouts based on this information. Refer to the Installation or Use & Care Guide before selecting cabinetry, verifying electrical/gas connections, making cutouts or beginning installation. All JennAir® appliances are appropriately UL, CUL or CSA approved.



SINGLE WALL OVENS

JJW2427I – 27" x 29-7/8" x 25-5/16"

JJW2430I, JJW3430I – 30" x 29-7/8" x 25-5/16"

ELECTRICAL REQUIREMENTS

If codes permit and a separate ground wire is used, it is recommended that a qualified electrical installer determine that the ground path and the wire gauge are in accordance with local codes.

Check with a qualified electrical installer if you are not sure the oven is properly grounded.

This oven must be connected to a grounded metal, permanent wiring system.

Be sure that the electrical connection and wire size are adequate and in conformance with the National Electrical Code, ANSI/NFPA 70-latest edition or CSA Standards C22.1-94, Canadian Electrical Code, Part 1 and C22.2 No. 0-M91-latest edition, and all local codes and ordinances.

A copy of the above code standards can be obtained from:

National Fire Protection Association
1 Batterymarch Park
Quincy, MA 02169-7471

CSA International
8501 East Pleasant Valley Road
Cleveland, OH 44131-5575

- Models rated from 7.3 to 9.6 kW at 240 V (5.4 to 7.4 kW at 208 V) require a separate 40 A circuit. Models rated at 4.8 kW and below at 240 V (3.6 kW and below at 208 V) require a separate 20 A circuit.
- A circuit breaker is recommended.
- Connect directly to the circuit breaker box (or fused disconnect) through flexible, armored, or nonmetallic sheathed, copper cable (with grounding wire).
- Flexible conduit from the oven should be connected directly to the junction box.
- Fuse both sides of the line.
- Do not cut the conduit. The length of conduit provided is for serviceability of the oven.
- A UL listed or CSA approved conduit connector must be provided.
- If the house has aluminum wiring, follow the procedure below: Connect the aluminum wiring using special connectors and/or tools designed and UL listed for joining copper to aluminum. Follow the electrical connector manufacturer's recommended procedure. Aluminum/copper connection must conform with local codes and industry accepted wiring practices.

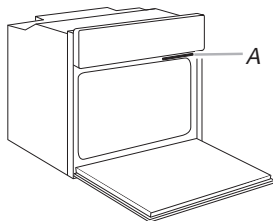
For power requirements for models JJW2427I, JJW2430I and JJW3430I, refer to the following table.

	240 VAC	208 VAC
Model	kW	kW
JJW2427I	4.1	3.1
JJW2430I	4.1	3.1
JJW3430I	4.5	3.4

ELECTRICAL CONNECTION

To properly install your oven, you must determine the type of electrical connection you will be using and follow the instructions provided for it here.

- Oven must be connected to the proper electrical voltage and frequency as specified on the model/serial/rating plate. The model/serial/rating plate is located under the control panel on single ovens. See the following illustration



A. Model/Serial/Rating Plate

IMPORTANT: Dimensional specifications are provided for planning purposes only.

Do not make any cutouts based on this information. Refer to the Installation or Use & Care Guide before selecting cabinetry, verifying electrical/gas connections, making cutouts or beginning installation.

All JennAir® appliances are appropriately UL, CUL or CSA approved.



INSTALLATION INSTRUCTIONS 27" (68.6 CM) AND 30" (76.2 CM) ELECTRIC SINGLE AND DOUBLE BUILT-IN OVEN FLUSH INSTALLATION KIT

INSTRUCTIONS D'INSTALLATION ENSEMBLE D'INSTALLATION EN AFFLEUREMENT POUR FOUR ÉLECTRIQUE ENCASTRÉ SIMPLE ET DOUBLE DE 27" (68,6 CM) ET 30" (76,2 CM)

27" (68.6 cm) Flush Installation Kits
Ensembles d'installation en affleurement de 27" (68,6 cm)

	Black Noir	Stainless Steel Acier inoxydable	Stainless Steel/ Acier inoxydable, RISE™/NOIR™
Model# Modèle n°	Kit PN/ Ensemble référence: W10791232	Kit PN/ Ensemble référence: W10791228	Kit PN/ Ensemble référence: W11357761
JJW2427DB, JJW2827DB	★★	*	*
JJW2427DS, JJW2827DS, JJW2727DS	*	★★	*
JJW2427IM, JJW2427IL, JJW2827IM, JJW2827IL	*	*	★★

30" (76.2 cm) Flush Installation Kits
Ensembles d'installation en affleurement de 30" (76,2 cm)

	Black Noir		Stainless Steel Acier inoxydable		Stainless Steel/ Acier inoxydable, RISE™/NOIR™	
Model# Modèle n°	Kit PN Ensemble référence: W10791233	Kit PN Ensemble référence: W10837578	Kit PN Ensemble référence: W10791229	Kit PN Ensemble référence: W10837579	Kit PN Ensemble référence: W11357756	Kit PN Ensemble référence: W11357769
JJW2430DS, JJW2430DP, JJW2830DS, JJW2830DP, JJW2730DS	*		★★		*	
JJW2430DB, JJW2830DB	★★		*		*	
JJW2430IM, JJW2430IL, JJW2830IM, JJW2830IL	*		*		★★	
JJW3430DS, JJW3430DP, JJW3830DS, JJW3830DP		*		★★		*
JJW3430IM, JJW3430IL, JJW3830IM, JJW3830IL		*		*		★★
JJW3430DB, JJW3830DB		★★		*		*

★ Approved for use.

★★ Recommended color and approved for use.

★ Approuvé pour l'utilisation.

★★ Couleur recommandée et approuvé pour l'utilisation.

IMPORTANT:

Save for local electrical inspector's use.

IMPORTANT:

À conserver pour consultation par l'inspecteur local des installations électriques.

W11356314A

In some European factories the letter "W" of the part code mentioned herein will be automatically replaced by the number "4000" (e.g. "W12345678" becomes "400012345678")

Table of Contents/Table des matières

BUILT-IN OVEN SAFETY	2	SÉCURITÉ DU FOUR ENCASTRÉ	11
INSTALLATION REQUIREMENTS	2	EXIGENCES D'INSTALLATION	12
Tools and Parts.....	2	Outils et pièces.....	12
Location Requirements.....	3	Exigences d'emplacement.....	12
INSTALLATION INSTRUCTIONS	5	INSTRUCTIONS D'INSTALLATION	15
Prepare Built-In Oven.....	5	Préparation du four encastré.....	15
Remove Oven Door(s).....	5	Dépose de la/des porte(s) du four.....	15
Replace Oven Door(s).....	6	Réinstallation de la/des porte(s) du four.....	16
Positioning Oven Feet.....	7	Positionnement des pieds du four.....	17
Replace Plastic Spacers.....	8	Remplacement des cales d'espacement en plastique.....	18
Install Oven.....	9	Installation du four.....	19
Install Deflector Kit Bracket.....	9	Installation du support de la trousse du déflecteur.....	19
Complete Installation.....	10	Achever l'installation.....	20

BUILT-IN OVEN SAFETY

Your safety and the safety of others are very important.

We have provided many important safety messages in this manual and on your appliance. Always read and obey all safety messages.



This is the safety alert symbol.

This symbol alerts you to potential hazards that can kill or hurt you and others.

All safety messages will follow the safety alert symbol and either the word "DANGER" or "WARNING."

These words mean:

! DANGER

You can be killed or seriously injured if you don't immediately follow instructions.

! WARNING

You can be killed or seriously injured if you don't follow instructions.

All safety messages will tell you what the potential hazard is, tell you how to reduce the chance of injury, and tell you what can happen if the instructions are not followed.

INSTALLATION REQUIREMENTS

Tools and Parts

Gather the required tools and parts before starting installation. Read and follow the instructions provided.

Tools Needed

- Phillips screwdriver
- Measuring tape
- Drill (for wall cabinet installations)
- 1/8" (3.1 mm) drill bit (for wall cabinet installations)
- Level
- Flat-blade screwdriver

Parts Supplied With Your Built-In Oven

- #8-14 x 1" (2.5 cm) screws - (2) single ovens, (4) double ovens included with built-in oven
- (2) #8-18 x 3/8" (9.5 mm) screws - bottom vent included with built-in oven
- (4) #8-18 x 3/8" (9.5 mm) screws - included with built-in oven
- Bottom vent included with built-in oven
- (2) Feet double oven included with built-in oven
- (2) Front feet double oven included with built-in oven

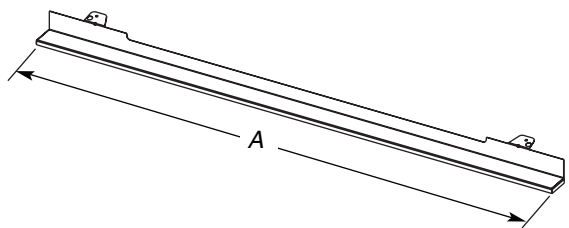
Parts Supplied

- Deflector bracket
- Plastic spacers - (4) single ovens, (6) double ovens
- #8-18 x 1/4" (6.3 mm) screws - (2) for 27" (68.6 cm) models; (4) for 30" (76.2 cm) models

Location Requirements

- IMPORTANT:** Observe all governing codes and ordinances.
- NOTE:** Refer to the following "Location Requirements" and the "Location Requirements" section of the Installation Instructions provided with your built-in oven.
- Cabinet opening dimensions that are shown must be used. Given dimensions provide minimum clearance with oven.
 - Recessed installation area must provide complete enclosure around the recessed portion of the oven.
 - Oven support surface must be solid, level, and flush with bottom of the cabinet cutout.
 - Floor must be able to support a single oven weight of 180 lbs (82 kg).
 - Floor must be able to support a double oven weight of 357 lbs (162 kg).
- IMPORTANT:** To avoid damage to your cabinets, check with your builder or cabinet supplier to make sure that the materials used will not discolor, delaminate, or sustain other damage. This oven has been designed in accordance with the requirements of UL and CSA International and complies with the maximum allowable wood cabinet temperatures of 194°F (90°C).

Deflector Bracket Dimensions



- | | |
|---|---|
| 27" (68.6 cm) Models | 30" (76.2 cm) Models |
| A. 26 ¹⁵ / ₁₆ " (68.4 cm) overall width | A. 29 ¹⁵ / ₁₆ " (76.0 cm) overall width |

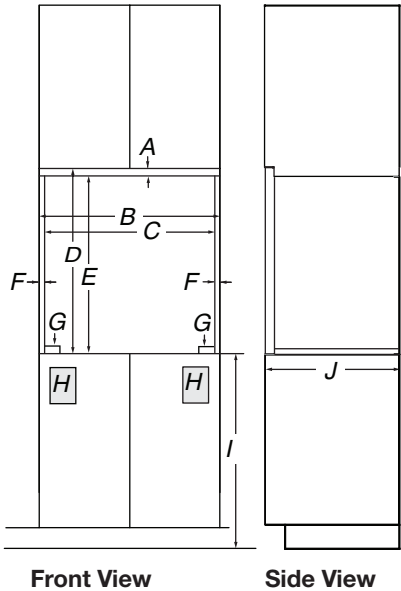
Cabinet Dimensions - Single Ovens, Flush Installations

A 25" (63.5 cm) minimum cutout depth is required.

These dimensions will result in a 1/4" (6.3 mm) reveal on the top, a 1/4" (6.3 mm) reveal on the sides, and a 1/8" (3.1 mm) reveal on the bottom of the wall oven.

The front face of the cleats and platform will be visible and should be treated as a finished surface.

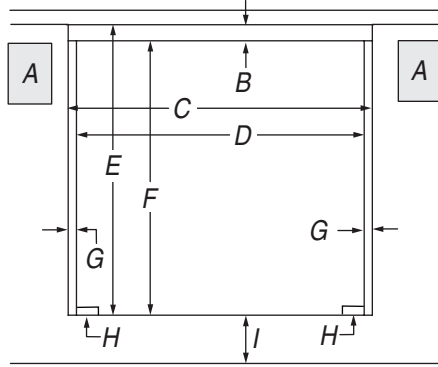
Single Ovens Installed in Cabinet - Flush Installation



- | 27" (68.6 cm) Models | 30" (76.2 cm) Models |
|---|--|
| A. 3/4" (19 mm) top cleat* | A. 3/4" (19 mm) top cleat* |
| B. 27 ¹ / ₄ " (69.2 cm) minimum width of flush inset cutout | B. 30 ¹ / ₄ " (76.8 cm) minimum width of flush inset cutout |
| C. 25 ⁷ / ₈ " (65.7 cm) minimum width of opening | C. 28 ⁷ / ₈ " (73.3 cm) minimum width of opening |
| D. 30 ⁷ / ₁₆ " (77.3 cm) minimum height of flush inset cutout | D. 30 ⁷ / ₁₆ " (77.3 cm) minimum height of flush inset cutout |
| E. 29 ¹¹ / ₁₆ " (75.4 cm) recommended cutout height | E. 29 ¹¹ / ₁₆ " (75.4 cm) recommended cutout height |
| F. 11/16" (1.7 cm) side cleat* | F. 11/16" (1.7 cm) side cleat* |
| G. 1/2" x 2" (1.3 cm x 5.1 cm) spacer the entire depth of the cutout* | G. 1/2" x 2" (1.3 cm x 5.1 cm) spacer the entire depth of the cutout* |
| H. Recommended junction box location | H. Recommended junction box location |
| I. 4 ⁵ / ₈ " - 32" (11.7 cm- 81.3 cm) bottom of cutout to floor | I. 4 ⁵ / ₈ " - 32" (11.7 cm - 81.3 cm) bottom of cutout to floor |
| J. 25" (63.5 cm) minimum depth of cutout | J. 25" (63.5 cm) minimum depth of cutout |

*Cleats and spacers must be recessed 1³/₈" (3.5 cm) from the front of the cabinet.

Single Ovens Undercounter - Flush Installations (without cooktop installed above)



Front View

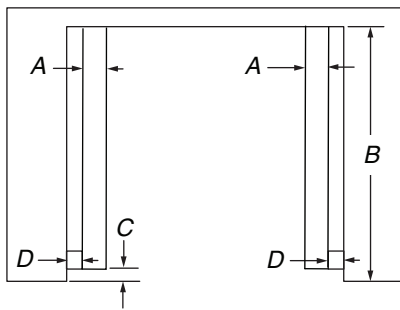
27" (68.6 cm) Models

- A. Recommended junction box location
- B. 3/4" (1.9 cm) top cleat*
- C. 27 1/4" (69.2 cm) minimum width of flush inset cutout
- D. 25 7/8" (65.7 cm) minimum width of opening
- E. 30 7/16" (77.3 cm) minimum height of flush inset cutout
- F. 29 11/16" (75.4 cm) recommended cutout height
- G. 11/16" (1.7 cm) side cleat*
- H. 1/2" x 2" (1.3 cm x 5.1 cm) spacer the entire depth of the cutout*
- I. 4 1/16" (10.3 cm) bottom of cutout to floor

30" (76.2 cm) Models

- A. Recommended junction box location
- B. 3/4" (1.9 cm) top cleat*
- C. 30 1/4" (76.8 cm) minimum width of flush inset cutout
- D. 28 7/8" (73.3 cm) minimum width of opening
- E. 30 7/16" (77.3 cm) minimum height of flush inset cutout
- F. 29 11/16" (75.4 cm) recommended cutout height
- G. 11/16" (1.7 cm) side cleat*
- H. 1/2" x 2" (1.3 cm x 5.1 cm) spacer the entire depth of the cutout*
- I. 4 1/16" (10.3 cm) bottom of cutout to floor

*Cleats and spacers must be recessed 1 3/8" (3.5 cm) from the front of the cabinet.



Top View

27" (68.6 cm) Models

- A. 1/2" x 2" (1.3 cm x 5.1 cm) spacer the entire depth of the cutout*
- B. 25" (63.5 cm) depth of cutout
- C. 1 3/8" (3.5 cm) recess from front of cabinet
- D. 11/16" (1.7 cm) side cleat*

30" (76.2 cm) Models

- A. 1/2" x 2" (1.3 cm x 5.1 cm) spacer the entire depth of the cutout*
- B. 25" (63.5 cm) depth of cutout
- C. 1 3/8" (3.5 cm) recess from front of cabinet
- D. 11/16" (1.7 cm) side cleat*

*Cleats and spacers must be recessed 1 3/8" (3.5 cm) from the front of the cabinet.

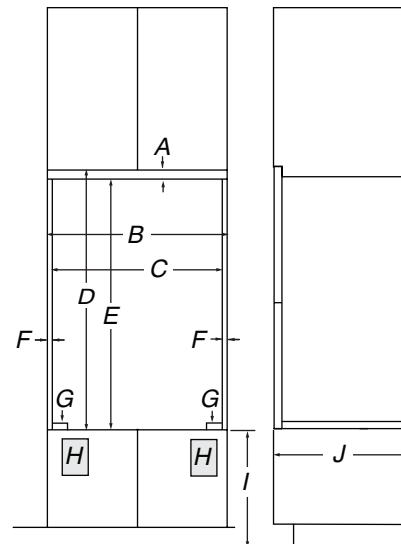
Cabinet Dimensions - Double Ovens, Flush Installations

A 25" (63.5 cm) minimum cutout depth is required.

These dimensions will result in a 1/4" (6.3 mm) reveal on the top, a 1/4" (6.3 mm) reveal on the sides, and a 1/8" (3.1 mm) reveal on the bottom of the wall oven.

The front face of the cleats and platform will be visible and should be treated as a finished surface.

Double Ovens Installed in Cabinet - Flush Installations



Front View

Side View

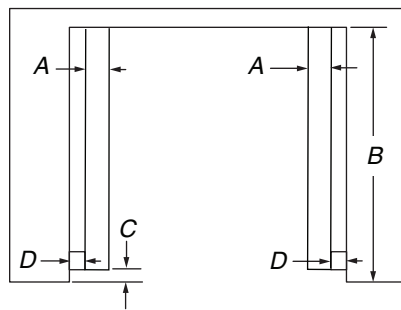
27" (68.6 cm) Models

- A. 9/16" (1.4 cm) top cleat*
- B. 27 1/4" (69.2 cm) minimum width of flush inset cutout
- C. 25 7/8" (65.7 cm) minimum width of opening
- D. 53 3/16" (135.1 cm) minimum height of flush inset cutout
- E. 52 5/8" (133.6 cm) recommended cutout height
- F. 11/16" (1.7 cm) side cleat*
- G. 1/2" x 2" (1.3 cm x 5.1 cm) spacer the entire depth of the cutout*
- H. Recommended junction box location
- I. 4 5/8" - 14 3/4" (11.7 - 37.5 cm) bottom of cutout to floor
- J. 25" (63.5 cm) minimum depth of cutout

30" (76.2 cm) Models

- A. 9/16" (1.4 cm) top cleat*
- B. 30 1/4" (76.8 cm) minimum width of flush inset cutout
- C. 28 7/8" (73.3 cm) minimum width of opening
- D. 53 3/16" (135.1 cm) minimum height of flush inset cutout
- E. 52 5/8" (133.6 cm) recommended cutout height
- F. 11/16" (1.7 cm) side cleat*
- G. 1/2" x 2" (1.3 cm x 5.1 cm) spacer the entire depth of the cutout*
- H. Recommended junction box location
- I. 4 5/8" - 14 3/4" (11.7 - 37.5 cm) bottom of cutout to floor
- J. 25" (63.5 cm) minimum depth of cutout

*Cleats and spacers must be recessed 1 3/8" (3.5 cm) from the front of the cabinet.



Top View

27" (68.6 cm) Models

- A. 1/2" x 2" (1.3 cm x 5.1 cm) spacer the entire depth of the cutout*
- B. 25" (63.5 cm) depth of cutout
- C. 1 3/8" (3.5 cm) recess from front of cabinet
- D. 11/16" (1.7 cm) side cleat*

30" (76.2 cm) Models

- A. 1/2" x 2" (1.3 cm x 5.1 cm) spacer the entire depth of the cutout*
- B. 25" (63.5 cm) depth of cutout
- C. 1 3/8" (3.5 cm) recess from front of cabinet
- D. 11/16" (1.7 cm) side cleat*

*Cleats and spacers must be recessed 1 3/8" (3.5 cm) from the front of the cabinet.



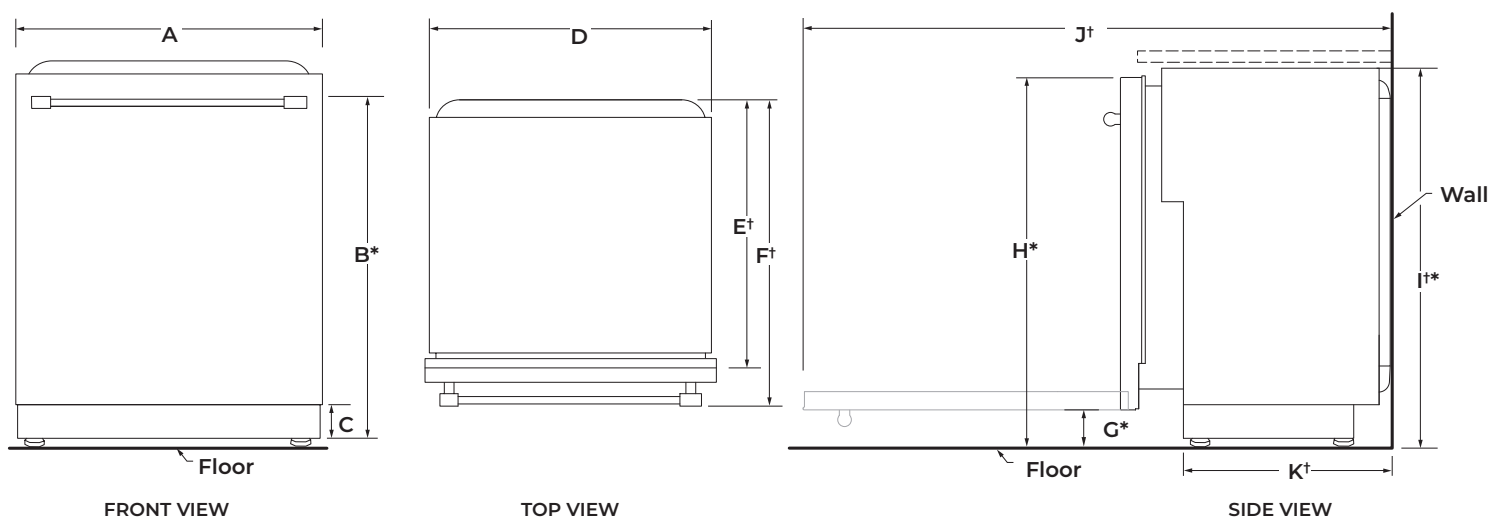
24" DISHWASHER

DETAILED PLANNING DIMENSIONS GUIDE

JDPSS246LL, JDPSS246LM, JDPSS244LS, JDPSS244LL,
JDPSS244LM
23⁷/₈" (W) x 33⁵/₈" (H) x 24¹/₂" (Depth without Handle)

JDPSS245LX
23⁷/₈" (W) x 33⁵/₈" (H) x 24³/₄" (Depth without Handle)

PRODUCT DIMENSIONS



	DESCRIPTION	DIMENSIONS
A	Width of door	23 ⁷ / ₈ " (60.6 cm)
B*	Height to top of handle	31 ⁹ / ₁₆ " (80.1 cm)
C	Height of adjustable toe kick	3 ¹ / ₂ " (8.8 cm) - min. 4 ¹ / ₄ " (10.8 cm) - max.
D	Width of recessed dishwasher	23 ⁷ / ₈ " (60.6 cm)
E†	Depth without door	22 ⁵ / ₈ " (57.5 cm)
F†	Depth with Towel Bar Handle	27 ¹ / ₄ " (69.2 cm)
	Depth with Pocket Handle	24 ¹ / ₂ " (62.2 cm)
	Depth with Wood panel	24 ³ / ₄ " (62.9 cm)**
G*	Height to bottom of door (min.)	3 ⁵ / ₁₆ " (8.4 cm)
H*	Height to top of door (min.)	33 ⁷ / ₁₆ " (84.9 cm)
I†*	Height of recessed dishwasher (min.)	33 ⁵ / ₈ " (85.4 cm)
J†	Depth with door fully open (min.)	50 ³ / ₁₆ " (127.4 cm)
K†	Depth with toe kick (min.)	20 ¹³ / ₁₆ " (52.9 cm)

†Insulation blanket thickness not included, can be crushed up to 1/8" (0.3 cm), or removed along the top perforate section for additional clearance.

*Dishwasher can be raised 1⁷/₁₆" (3.7 cm) with feet fully extended.

**Considering 3/4" wood panel thickness.

Because Whirlpool Corporation policy includes a continuous commitment to improve our products, we reserve the right to change materials and specifications without notice.

Dimensions are for planning purposes only. For complete details, see Installation Instructions packed with product. Specifications subject to change without notice.



24" DISHWASHER

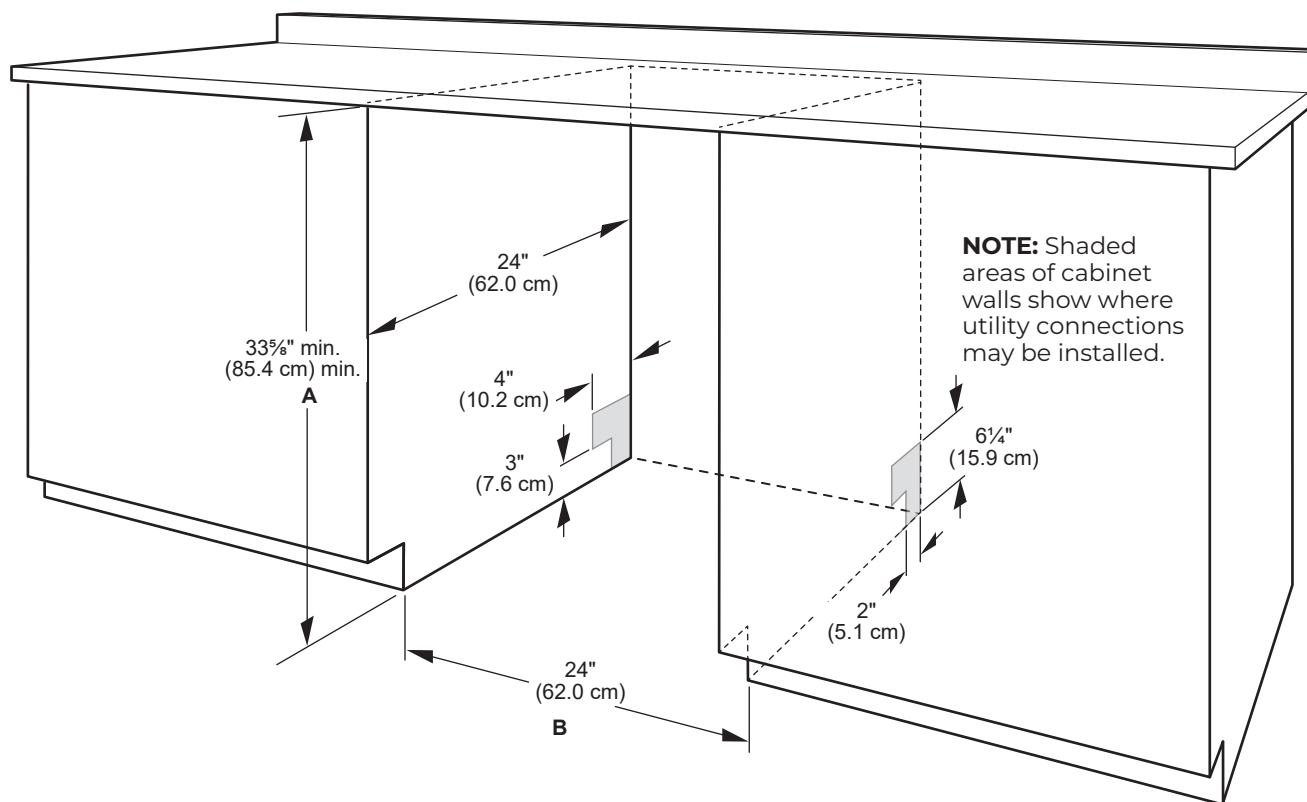
DETAILED PLANNING DIMENSIONS GUIDE

JDPSS246LL, JDPSS246LM, JDPSS244LS, JDPSS244LL,
JDPSS244LM
23⁷/₈" (W) x 33⁵/₈" (H) x 24¹/₂" (Depth without Handle)

JDPSS245LX
23⁷/₈" (W) x 33⁵/₈" (H) x 24³/₄" (Depth without Handle)

OPENING/CLEARANCE DIMENSIONS

IMPORTANT: Check that all surfaces have no protrusions that would prohibit dishwasher installation.



A. Measured from the lowest point on the underside of the countertop. May be reduced to 33⁵/₈" min. (85.4 cm) min. by removing the feet and perforated area of insulation (blanket) on dishwasher.

B. Minimum, measured from narrowest point of opening.

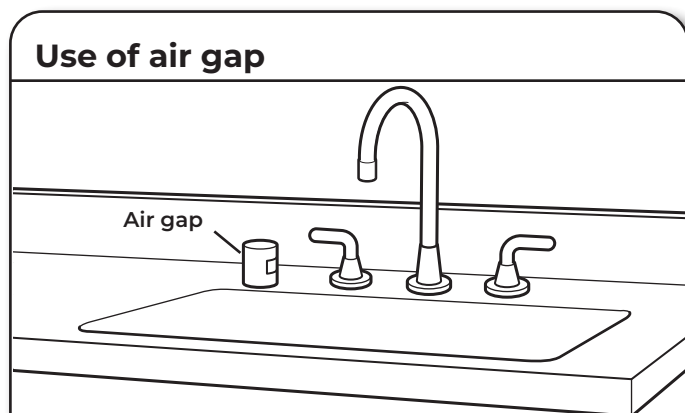
NOTE: Corner locations require a 2" (5.1 cm) minimum clearance between the side of the dishwasher door and the wall or cabinet.

DRAIN REQUIREMENTS

- A new drain hose is supplied with your dishwasher. If drain hose is not long enough, use a new drain hose with a maximum length of 12 ft (3.7 m) that meets all current AHAM/IAPMO test standards, is resistant to heat and detergent, and fits the 1" (25 mm) drain connector of the dishwasher.

NOTE: Do not connect multiple drain hoses together.

- Make sure to connect drain hose to waste tee or disposer inlet above drain trap in house plumbing and 20" (508 mm) minimum above the floor. It is recommended that the drain hose either be looped up and securely fastened to the underside of the counter or be connected to an air gap.
- Make sure to use an air gap if the drain hose is connected to house plumbing lower than 20" (508 mm) above subfloor or floor.



- If required, the air gap should be installed in accordance with the air gap installation instructions. When you are connecting the air gap, a rubber hose (not provided) will be needed to connect to the waste tee or disposer inlet.
- Use 1/2" (1.3 cm) minimum I.D. drain line fittings.

WATER SUPPLY REQUIREMENTS

- This dishwasher has a water heating feature and also requires a connection to a hot water supply line.
 - A hot water line with 20 psi to 120 psi (138 kPa to 862 kPa) water pressure can be verified by a licensed plumber.
 - 120°F (49°C) water at dishwasher.
 - 3/8" (0.95 cm) O.D. copper tubing with compression fitting or flexible braided water supply line.
- NOTE:** 1/2" (1.3 cm) minimum plastic tubing is not recommended.
- A 90° elbow with 3/4" (0.95 cm) hose connection with rubber washer.
 - Do not solder within 6" (15.2 cm) of the water inlet valve.
 - If installed in new construction, make sure the house water supply lines have been flushed prior to connecting the dishwasher to remove any debris that may exist in the supply line.

NOTE: If replacing an existing dishwasher, it is recommended to install a new water line and drain hose (supplied) with the new dishwasher.

ELECTRICAL REQUIREMENTS

⚠ WARNING



Electrical Shock Hazard

Plug into a grounded 3 prong outlet.

Do not remove ground prong.

Do not use an adapter.

Do not use an extension cord.

Failure to follow these instructions can result in death, fire, or electrical shock.

Be sure that the electrical connection and wire size are adequate and in conformance with the National Electrical Code, ANSI/NFPA 70 - latest edition, and all local codes and ordinances.

A copy of the above code standards can be obtained from:

National Fire Protection Association
1 Batterymarch Park
Quincy, MA 02169-7471

You Must Have:

- 120 V, 60 Hz, AC only, 15 A or 20 A, fused electrical supply
- Copper wire only
- A maximum of 2 field wiring supply conductors (12 AWG largest size) plus 1 grounding conductor are permitted in the terminal box.

We Recommend:

- A time-delay fuse or circuit breaker.

Circuit Requirements:

- The dishwasher may be installed on the same circuit as a garbage disposal providing that the branch circuit cannot exceed rated circuit load and must comply with all governing codes and regulations such as but not limited to National Electrical Code, ANSI/NFPA 70 - latest edition.
- No electrical connections other than the dishwasher power and ground connections can be made inside of the dishwasher terminal box.

If connecting dishwasher with a power supply cord:

- Use UL Listed power cord kit marked for use with dishwasher.
- Plug into a grounded 3 prong outlet. Outlet must meet all local codes and ordinances.



If connecting dishwasher with direct wiring:

- Use flexible, armored, or nonmetallic sheathed copper wire with grounding wire that meets the wiring requirements for your home and local codes and ordinances.
- Use a UL Listed/CSA Approved metallic strain relief.



KCGC506JSS

KitchenAid®

KitchenAid® 36" 6-Burner Commercial-Style Gas Rangetop

<http://www.kitchenaid.com>

Key Features:

- Two 20,000 BTU Ultra Power™ Dual-Flame Burners
- 5,000 BTU Simmer & Melt Burner
- Three-Level Convertible Grates
- Three 15,000 BTU Burners

Product Dimensions:

Height: 7 7/16

Width: 35 3/4

Depth: 27 7/8

Additional Information:

[Use And Care Guide](#)

[Dimension Guide](#)

[Installation Guide](#)

[Warranty Certificate](#)



Available in:

 Stainless Steel

INVESTED
IN
AMERICA

®Registered trademark/TM Trademark of Whirlpool, U.S.A. © 2016 Whirlpool Corporation. All Rights Reserved.
All other trademarks are owned by their respective companies.

Because Whirlpool Corporation policy includes a continuous commitment to improve our products, we reserve the right to change materials and specifications without notice. We also reserve the right to discontinue or transition products without notice.

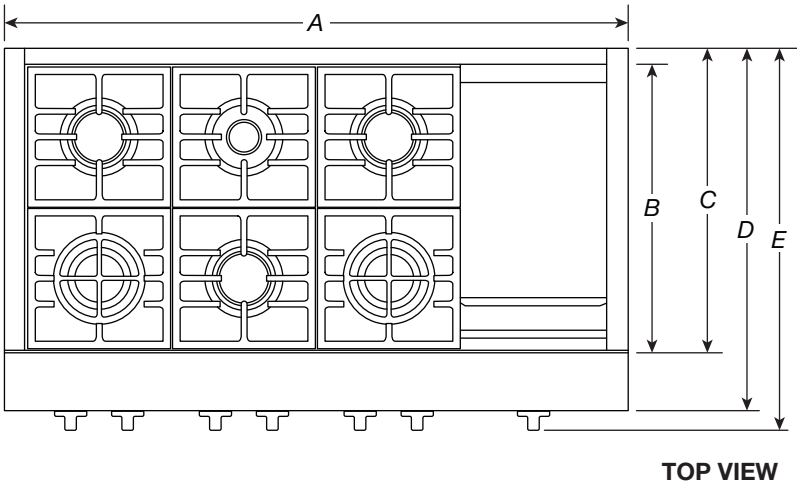
Manufacturer's Suggested Retail Price (MSRP) and Minimum Advertised Price (MAP) provided for reference purposes only. Dealer alone determines advertised and retail prices.

Created On: Sunday, October 20, 2019 08:14:22

COMMERCIAL-STYLE RANGETOPS

PRODUCT DIMENSIONS

MODEL #	30" (76.2 cm) Rangetop KCGC500J		36" (91.4 cm) Rangetop KCGC506J		48" (121.9 cm) Rangetop KCGC558J	
Unit of Measurement	in	cm	in	cm	in	cm
Overall Width (A)	29¾	75.6	35¾	90.8	47⅞	121.6
Grate Depth (B)	22	55.9	22	55.9	22	55.9
Depth without Control Panel (C)	23¼	59.1	23¼	59.1	23¼	59.1
Depth with Control Panel Overhang (D)	27⅞	70.8	27⅞	70.8	27⅞	70.8
Depth with Knobs (E)	29⅞	74.6	29⅞	74.6	29⅞	74.6



IMPORTANT: Dimensional specifications are provided for planning purposes only.
Do not make any cutouts based on this information. Refer to the Installation Guide before selecting cabinetry, verifying electrical/gas connections, making cutouts or beginning installation.
All KitchenAid® appliances are appropriately UL, CUL or CSA approved.

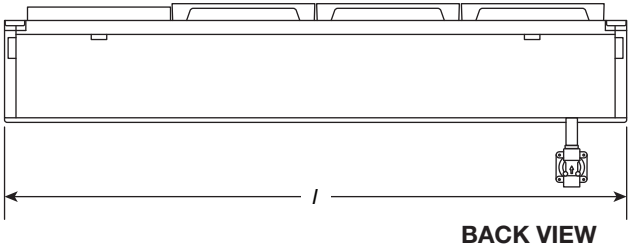
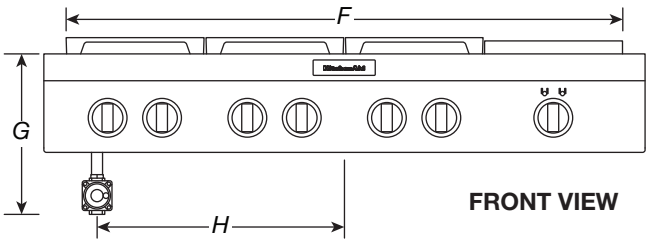
DIMENSIONS

COMMERCIAL-STYLE RANGETOPS

PRODUCT DIMENSIONS

MODEL #	30" (76.2 cm) Rangetop KCGC500J		36" (91.4 cm) Rangetop KCGC506J		48" (121.9 cm) Rangetop KCGC558J	
Unit of Measurement	in	cm	in	cm	in	cm
Grate Width (F)*	27 ⁷ / ₁₆	69.7	33	83.8	44 ³ / ₈	112.7
Gas Inlet to Surface (G)	10 ³ / ₄	27.3	10 ³ / ₄	27.3	10 ³ / ₄	27.3
Center to Gas Inlet (H)	11	27.9	14 ¹ / ₈	35.9	19 ⁵ / ₈	49.8
Recessed Rangetop Width (I)	29 ¹ / ₈	74	35	88.9	47 ¹ / ₄	120

*Includes width of grates and griddle.



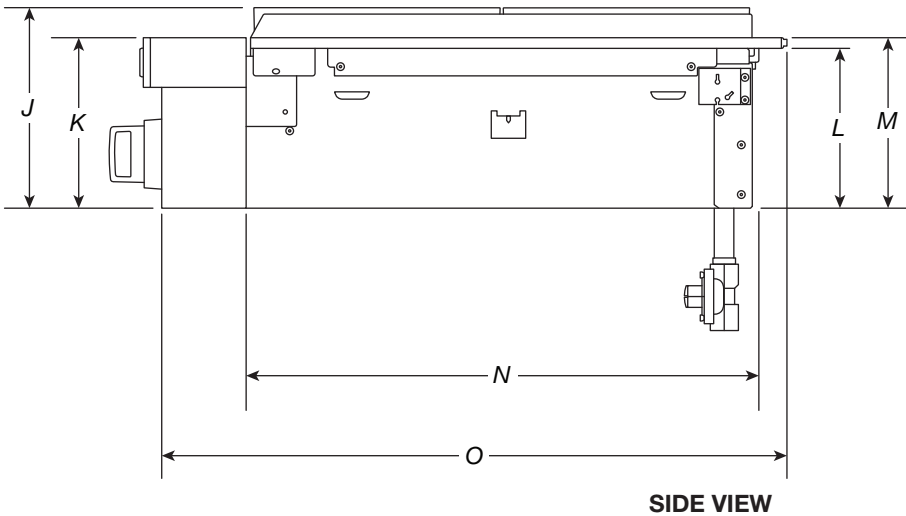
IMPORTANT: Dimensional specifications are provided for planning purposes only.
Do not make any cutouts based on this information. Refer to the Installation Guide before selecting cabinetry, verifying electrical/gas connections, making cutouts or beginning installation.
All KitchenAid® appliances are appropriately UL, CUL or CSA approved.

COMMERCIAL-STYLE RANGETOPS

PRODUCT DIMENSIONS

MODEL #	30" (76.2 cm) Rangetop KCGC500J		36" (91.4 cm) Rangetop KCGC506J		48" (121.9 cm) Rangetop KCGC558J	
Unit of Measurement	in	cm	in	cm	in	cm
Height with Grates (J)	9	22.9	9	22.9	9	22.9
Control Panel Height (K)	7 ¹³ / ₁₆	19.8	7 ¹³ / ₁₆	19.8	7 ¹³ / ₁₆	19.8
Recessed Rangetop Height (L)	7	17.8	7	17.8	7	17.8
Cooking Surface Height (M)	7 ⁷ / ₁₆	18.9	7 ⁷ / ₁₆	18.9	7 ⁷ / ₁₆	18.9
Recessed Rangetop Depth (N)	21 ⁷ / ₈	55.6	21 ⁷ / ₈	55.6	21 ⁷ / ₈	55.6
Depth with Control Panel (O)	25 ¹ / ₂	64.8	25 ¹ / ₂	64.8	25 ¹ / ₂	64.8

IMPORTANT: Supplied regulator does not come preattached and is pictured for reference purposes only.



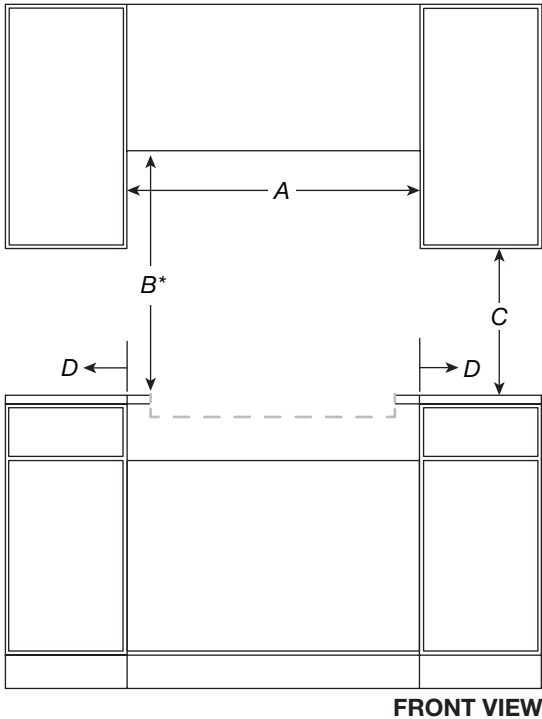
IMPORTANT: Dimensional specifications are provided for planning purposes only.
Do not make any cutouts based on this information. Refer to the Installation Guide before selecting cabinetry, verifying electrical/gas connections, making cutouts or beginning installation.
All KitchenAid® appliances are appropriately UL, CUL or CSA approved.

COMMERCIAL-STYLE RANGETOPS

OPENING/CLEARANCE DIMENSIONS

MODEL #	30" (76.2 cm) Rangetop KCGC500J		36" (91.4 cm) Rangetop KCGC506J		48" (121.9 cm) Rangetop KCGC558J	
Unit of Measurement	in	cm	in	cm	in	cm
Combustible Area above Cooking Surface Width (min.) (A)	30	76.2	36	91.4	48	121.9
Bottom of Cabinet Height above Cooking Surface (min.) (B)*	42	106.7	58	147.3	58	147.3
Bottom of Cabinet Height above Countertop (min.) (C)	18	45.7	18	45.7	18	45.7
Distance to Fixed Wall or Combustible Material (D)	12	30.5	12	30.5	12	30.5

*If installing a hood above the rangetop, follow the hood instructions for dimensional clearances above the cooking surface.



IMPORTANT: Dimensional specifications are provided for planning purposes only.
Do not make any cutouts based on this information. Refer to the Installation Guide before selecting cabinetry, verifying electrical/gas connections, making cutouts or beginning installation.
All KitchenAid® appliances are appropriately UL, CUL or CSA approved.

DIMENSIONS

5 of 24

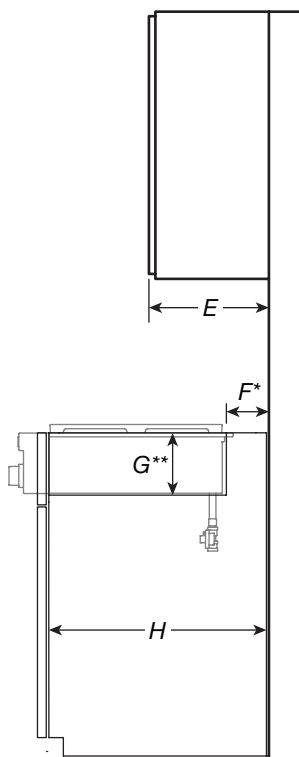
COMMERCIAL-STYLE RANGETOPS

OPENING/CLEARANCE DIMENSIONS

MODEL #	30" (76.2 cm) Rangetop KCGC500J		36" (91.4 cm) Rangetop KCGC506J		48" (121.9 cm) Rangetop KCGC558J	
Unit of Measurement	in	cm	in	cm	in	cm
Recommended Upper Cabinet Depth (E)	13	33	13	33	13	33
Cutout to Wall Depth (if backwall is constructed of non-combustible material) (F)*	1¾	4.4	1¾	4.4	1¾	4.4
Cutout to Wall Depth (if backwall is constructed of combustible material) (F)*	7¾	19.7	7¾	19.7	7¾	19.7
Cabinet to Countertop Height (G)**	7¼	18.4	7¼	18.4	7¼	18.4
Cabinet Depth (H)	24	61	24	61	24	61

*If the back wall is constructed of a combustible material and a backsplash is not installed, a 7¾" (19.7 cm) minimum clearance is required from the cutout or 6" (15.2 cm) minimum clearance from the back edge of the rangetop.

**The bottom of the cutout supports the product. Unlike many cooktops, these models do not hang from the side flanges, but rather sit on the floor of the cutout.



SIDE VIEW

IMPORTANT: Dimensional specifications are provided for planning purposes only.

Do not make any cutouts based on this information. Refer to the Installation Guide before selecting cabinetry, verifying electrical/gas connections, making cutouts or beginning installation.

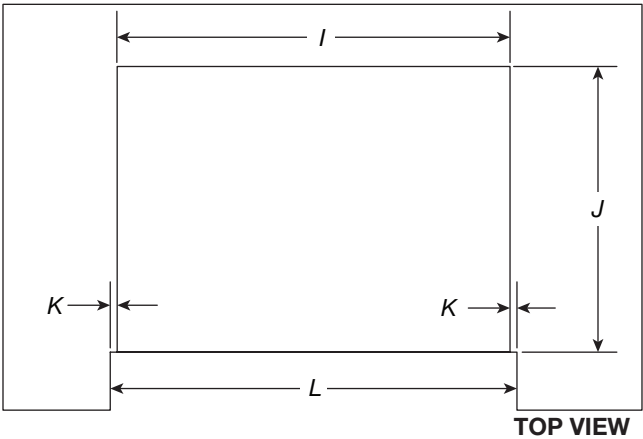
All KitchenAid® appliances are appropriately UL, CUL or CSA approved.

KitchenAid®

COMMERCIAL-STYLE RANGETOPS

OPENING/CLEARANCE DIMENSIONS

MODEL #	30" (76.2 cm) Rangetop KCGC500J		36" (91.4 cm) Rangetop KCGC506J		48" (121.9 cm) Rangetop KCGC558J	
Unit of Measurement	in	cm	in	cm	in	cm
Countertop and Cabinet Cutout Width (I)	29 ¹ / ₄	74.3	35 ¹ / ₄	89.5	47 ³ / ₈	120.3
Countertop and Cutout Depth (J)	22 ¹ / ₄	56.5	22 ¹ / ₄	56.5	22 ¹ / ₄	56.5
Notch Width (K)	¹ / ₄	0.6	¹ / ₄	0.6	¹ / ₄	0.6
Cutout Width (L)	29 ⁷ / ₈	75.9	35 ³ / ₄	90.8	47 ⁷ / ₈	121.6



IMPORTANT: Dimensional specifications are provided for planning purposes only.
Do not make any cutouts based on this information. Refer to the Installation Guide before selecting cabinetry, verifying electrical/gas connections, making cutouts or beginning installation.
All KitchenAid® appliances are appropriately UL, CUL or CSA approved.

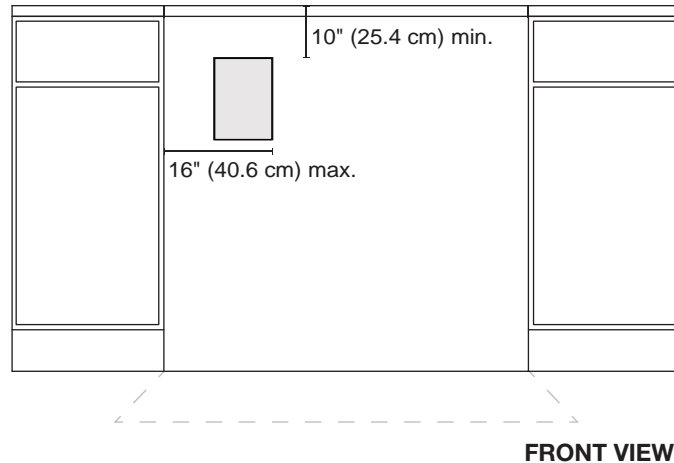
COMMERCIAL-STYLE RANGETOPS

ELECTRICAL REQUIREMENTS

ELECTRIC REQUIREMENTS CHECKLIST

- ☐ A 120 V, 60 Hz, AC only, 15 A fused, electrical circuit is required.
- ☐ A dedicated circuit is recommended.

RECOMMENDED ELECTRICAL OUTLET ZONE



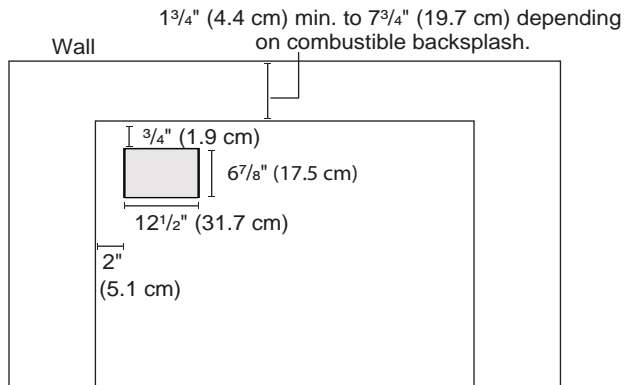
NOTE: If you have questions about your electrical supply, call a licensed, qualified electrician.

IMPORTANT: Dimensional specifications are provided for planning purposes only.
Do not make any cutouts based on this information. Refer to the Installation Guide before selecting cabinetry, verifying electrical/gas connections, making cutouts or beginning installation.
 All KitchenAid® appliances are appropriately UL, CUL or CSA approved.

COMMERCIAL-STYLE RANGETOPS

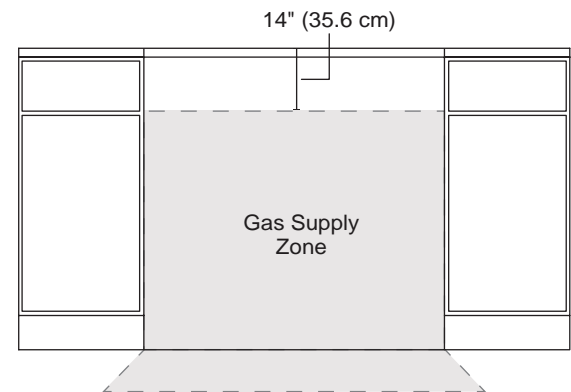
GAS REQUIREMENTS

RECOMMENDED GAS SUPPLY LOCATION



TOP VIEW

GAS SUPPLY ZONE



FRONT VIEW

*If the back wall is constructed of a combustible material and a backsplash is not installed, a 7 1/2" (19.1 cm) minimum clearance is required from the cutout or 6" (15.2 cm) minimum clearance from the back edge of the rangetop.

**Unlike many cooktops, these models do not hang from the side flanges, but rather sit on the floor of the cutout. The grey box pictured in the image above on the left is a hole in the cutout for the gas and electric lines to pass through.

NOTE: If you have questions about your gas supply, call a licensed, qualified service technician.

IMPORTANT: Dimensional specifications are provided for planning purposes only.

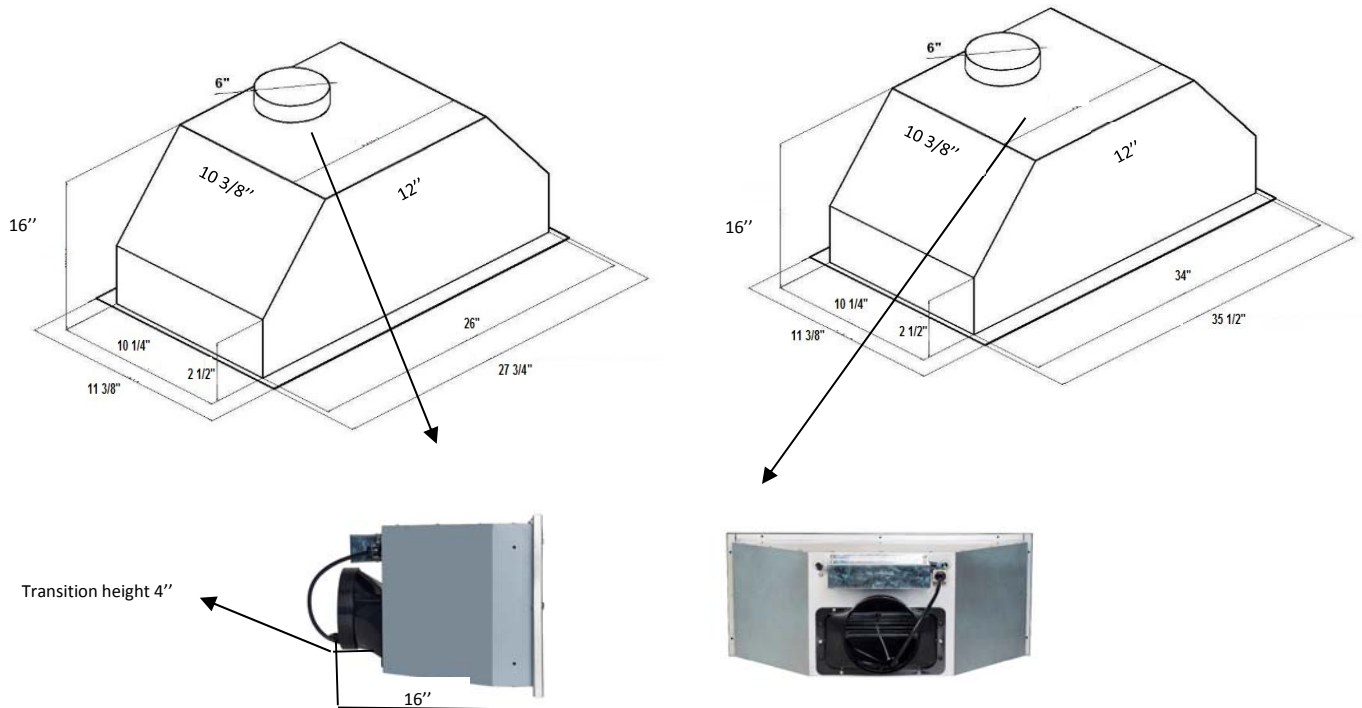
Do not make any cutouts based on this information. Refer to the Installation Guide before selecting cabinetry, verifying electrical/gas connections, making cutouts or beginning installation.

All KitchenAid® appliances are appropriately UL, CUL or CSA approved.

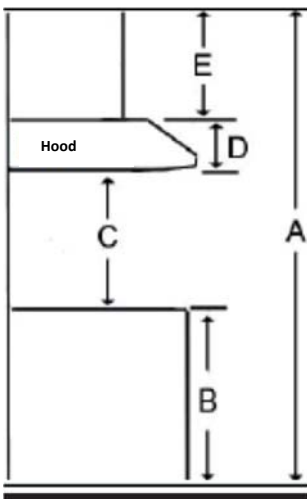


Selected Model	
Model number	AVM-368PS
Dimensions	
Dimensions	35 1/2" (W) x 11 3/4" (D) x 13 1/2"-16" (H)
	35 1/2" (W) x 11 3/8" (D) x 13 1/2" (H)
Exterior Appearance	
Stainless steel grade	201
Features	
Control	Mechanical push buttons
Lighting	2 bulbs, 3W LED (bulbs included)
Blower type	860 CFM, 3-Speed
Blower performance	Speed 1, 0.7 sones
	Speed 3, 4.0 sones
Filter type	2 aluminium superior micro hole filters and stainless steel baffle filters included
Duct transition	6" Round (Top)
Ducting	Ducted
Electrical Requirements	
Electrical requirements	120V / 60Hz / 2.7 Amps
Warranty	
1-year Warranty	Parts and labour, in-home service

Dimensions



Installation



A	Floor to ceiling height	variable
B	Floor to counter top height (standard)	36"
C	Recommended height between cooking surface and bottom of the hood	28" to 30"
D	Hood height (including transition height (4"))	16"
E	Cabinet height	N/A

Duct transition

Top 6" Round



The information contained herein is based on sources that we believe to be reliable, but is not guaranteed by us, may be incomplete and/or may change without notice.

LG LAUNDRY

WM4100HBA

5.2 cu. ft. Capacity Front Load Washer

TurboWash™ 360 Technology

AI DD™

Steam Technology

ENERGY STAR® Qualified

SmartDiagnosis™

Touch Control Panel

ThinQ™ Technology (Wi-Fi Enabled)

Enjoy new ways to control your home with LG smart appliances

LG ThinQ™

- Start the laundry while you're out shopping
- Get alerts when the cycle is finished
- Works with the LG ThinQ® app



CAPACITY	
Capacity (cu.ft.)	5.2
APPEARANCE	
Design Look	Front Control
Intelligent Electronic Controls with LED Display	•
Touch Buttons	•
Dial-A-Cycle™	•
ENERGY	
ENERGY STAR® Qualified	•
CEE Tier	2
DRYING PROGRAMS	
No. of Programs - 14	Normal, Perm. Press, Heavy Duty, Delicates, Towels, Speed Wash, Drain+Spin, Bedding, Tub Clean, Bright Whites™, Sanitary, Allergiene™ Sportswear, Downloaded
No. of Options - 14	TurboWash™, Steam, Fresh Care, Pre-wash, Remote Start, Delay Wash, Wi-Fi, Add Item, Cold Wash, Extra Rinse, Rinse+Spin, Control Lock, Spin Only, Signal
Temperature Settings	5 Extra Hot, Hot, Warm, Cold, Tap Cold
Spin Speeds	5 Extra High, High, Medium, Low, No Spin
Water Levels	Load Sensing
Soil Levels	5
FABRIC CARE FEATURES	
AI DD™	•
TurboWash™ 360 Technology	•
Steam Technology	•
Allergiene™ Cycle	•
Sanitary Cycle	•
ColdWash™ Option	•
CONVENIENCE FEATURES	
4 Tray Dispenser	Prewash, Main Wash (with liquid detergent cup), Bleach, Fabric Softener
TrueBalance™ Anti-Vibration System	•
Load Sense	•
Control Lock	•
Auto Suds Removal	•
Leveling Legs	4 Adjustable Legs
ThinQ® TECHNOLOGY	
SmartDiagnosis™ (v3.0)	•
Wi-Fi	•
Remote Start and Cycle Monitor	•
Energy Monitoring	•

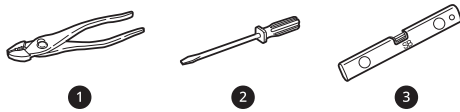


Tub Clean Coach	•
MOTOR	
Motor Type	Inverter Direct Drive Motor
Motor Speed	Variable
Max RPM	1,300
Axis	Horizontal
MATERIALS AND FINISHES	
NeveRust™ Stainless Steel Drum	•
Cabinet	PCM
Control Panel	Plastic
Top Plate	Painted
Door Cover	Tempered Glass Door
Door / Rim	Glass/Chrome
All Available Colours	Black Steel (B)
POWER SOURCE	
Ratings	UL Listed
Electrical Requirements	120V, 10 Amps
Type	Electric
OPTIONS	
Pedestal	WDP4B 27" x 14 1/8" x 30 3/4"
SideKick™ Pedestal Washer	WD100CB 27" x 14 1/8" x 30 3/4"
Stacking Kit	KSTK1
DIMENSIONS	
Product (WxHxD)	27" x 39" x 30 1/4" 55" (With door open)
Carton (WxHxD)	29 23/32" x 42 27/32" x 31 17/32"
Weight (Product/Carton)	198.4 lbs / 212.1 lbs
LIMITED WARRANTY	
1 Year Parts and Labour, 3 Years on Drum, 10 Years on Direct Drive Motor	
UPC CODES	
WM4100HBA	772454073250
DLEX4200B	772454073267
DLGX4201B	772454073366
WD100CB	772454071805
WDP4B	048231026451
KSTK1	772454059896

⚠ WARNING

- Certain internal parts are intentionally not grounded and may present a risk of electric shock only during servicing. Service personnel- Do not contact the following parts while the appliance is energized: pump, valve, motor, control board.

Tools Needed



- ❶ Pliers
- ❷ Flat-Blade Screwdriver
- ❸ Level

Choosing the Proper Location

Check the following requirements for the install location before installing the washer.

- Allow for sufficient space between the walls and the washer for installation.
- Make sure that the floor is clean, dry and free of dust, dirt, water and oil so the leveling feet cannot slide easily. Leveling feet that can move or slide on the floor can contribute to excess vibration and noise.
- If the floor has too much flex, reinforce it to make it more rigid. If the floor is not solid, it may cause severe vibration and noise.
- If a drain pan must be used, take extra care to follow the instructions provided with the drain pan and make sure the leveling feet are adjusted for firm and even contact with the pan. Use of drain pans and failure to properly level the washer may result in increased vibration and noise during operation.

Power Outlet

- The power outlet must be within **60 inches (1.5 m)** of either side of the washer.
- Position the washer so that the outlet and plug are easily accessible.
- Do not overload the outlet with more than one appliance.
- The outlet must be grounded in accordance with current electrical wiring codes and regulations.
- Use a time-delay fuse or circuit breaker.

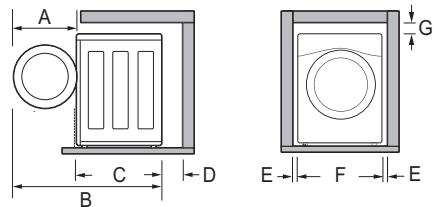
- It is the personal responsibility and obligation of the washer owner to have a proper outlet installed by a qualified electrician.

Flooring

- To minimize noise and vibration, install the washer on a level, solidly constructed floor capable of supporting the washer without flexing or bouncing.
- The washer must be installed on firm flooring to minimize vibration during the spin cycle. Concrete flooring is best, but a wood floor is sufficient, provided it is built to FHA standards.
- The floor under the washer must not slope more than 1 inch (2.5 cm) from front to back or side to side.
- Installing on carpeting and soft tile surfaces is not recommended.
- Never install the washer on a platform or weakly supported structure.

Floor Installation

To ensure sufficient clearance for water inlet hoses, drain hose and airflow, allow minimum clearances of at least **1 inch (2.5 cm)** at the sides and **4 inches (10 cm)** behind the washer. Be sure to allow for wall, door, or floor moldings that may increase the required clearances.

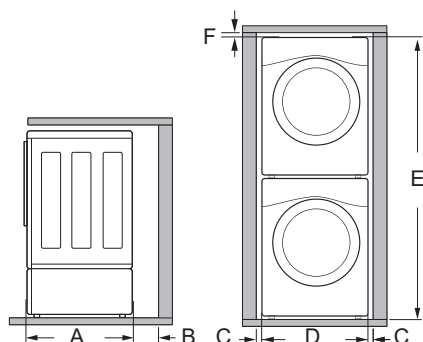


Dimensions and Clearances	
A	24 3/4" (62.6 cm)
B	55" (139.6 cm)
C	30 1/4" (77 cm)
D	4" (10 cm)
E	1" (2.5 cm)

Dimensions and Clearances	
F	27" (70 cm)
G	1/4" (0.5 cm)

Stacking or Pedestal Installation

The washer can be stacked under a dryer or on top of a pedestal or pedestal washer.



Dimensions and Clearances	
A	30 1/4" (77 cm)
B	4" (10 cm)
C	1" (0.5 cm)
D	27" (70 cm)
E	77 1/2" (196.8 cm)
F	1/4" (0.5 cm)

NOTE

- Refer to the instructions packaged with the optional pedestal kit before stacking appliance on pedestal.
- Do not use a drain pan with a pedestal or pedestal washer installation as it can block the drawer. Using a drain pan may result in increased vibration and noise during operation.

Unpacking and Removing Shipping Material

Remove all shipping materials from the washer for proper operation and inspect it for shipping damage.

CAUTION

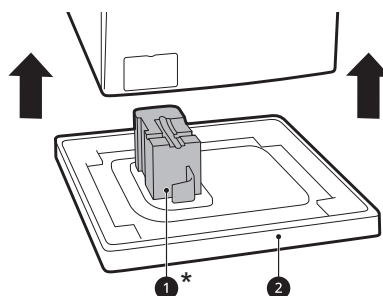
- Failure to remove shipping materials can cause excessive noise and vibration.

Unpacking Shipping Material

* This feature is only available on some models.

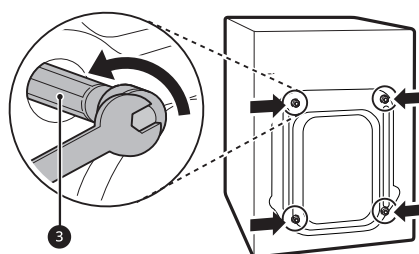
Lift the washer off the foam base.

- After removing the carton and shipping material, lift the washer off the foam base.
- Make sure the plastic drum support **1*** comes off with the base and is not stuck to the bottom of the washer.
- If you must lay the washer down to remove the carton base **2**, always protect the side of the washer and lay it carefully on its side. Do not lay the washer on its front or back.



Removing Shipping Material

- 1 Remove the bolt assemblies.
 - Starting with the bottom two shipping bolts **3**, use the included wrench to fully loosen all 4 shipping bolts by turning them counterclockwise.
 - Remove the bolt assemblies (bolts and retainers) by wiggling them slightly while pulling them out.



- 2 Install the hole caps.
 - Locate the hole caps **4** included in the accessory pack or attached to the back of

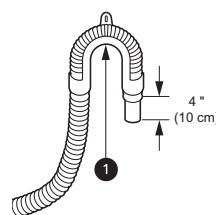
- Let the water drain into a bucket, and check the water temperature to make sure you've connected the hoses to the correct faucets.



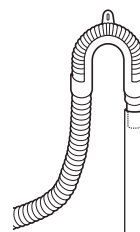
- Never create an airtight seal between the hose and the drain with tape or other means. If no air gap is present, water can be siphoned out of the drum resulting in poor wash/rinse performance or clothing damage.

Using a Standpipe to Drain

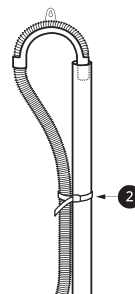
- 1 Clip the end of the hose into the elbow bracket.
 - Connect the elbow bracket ① within **4 inches (10 cm)** of the end of the drain hose. If the drain hose is extended more than **4 inches (10 cm)** beyond the end of the elbow bracket, mold or microorganisms could spread to the inside of the washer.



- 2 Insert the end of the drain hose into the standpipe.

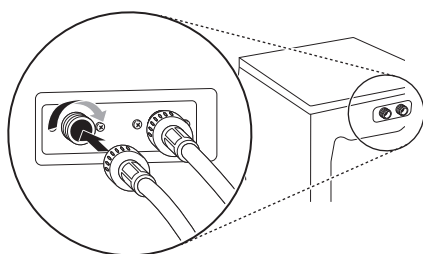


- 3 Use the provided tie strap ② to secure the drain hose in place.



- 4 If the water valves and drain are built into the wall, fasten the drain hose to one of the water hoses with the provided tie strap ③ (ribbed side on inside).

- 4 Attach the inlet hoses to the back of the washer.
 - Attach the hot water inlet hose to the hot water inlet on the back of the washer. Attach the cold water inlet hose to the cold water inlet on the back of the washer.
 - Tighten the fittings securely. Turn on both faucets all the way and check for leaks at both ends of the hoses.



Connecting the Drain Hose

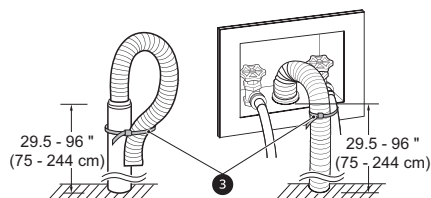
Connect the drain hose to either a standpipe or laundry tub.

⚠ WARNING

- The drain hose should always be properly secured. Failure to properly secure the drain hose can result in flooding and property damage.

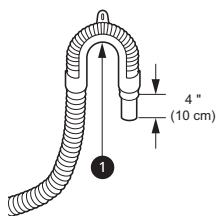
NOTE

- The drain must be installed in accordance with any applicable local codes and regulations.
- Make sure that the drain hose is not stretched, pinched, crushed, or kinked.
- Do not install the drain hose with the end lower than **29.5 inches (75 cm)** or higher than **96 inches (244 cm)** above the bottom of the washer or more than **60 inches (152 cm)** away from the washer.

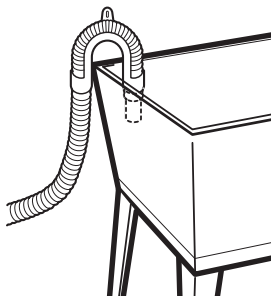


Using the Laundry Tub to Drain

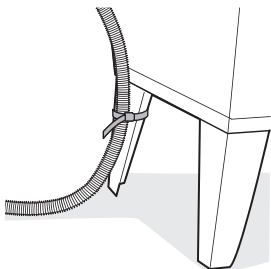
- 1 Clip the end of the hose into the elbow bracket.
 - Connect the elbow bracket ① within **4 inches (10 cm)** of the end of the drain hose. If the drain hose is extended more than **4 inches (10 cm)** beyond the end of the elbow bracket, mold or microorganisms could spread to the inside of the washer.



- 2 Hang the end of the drain hose over the side of the laundry tub.



- 3 Use the provided tie strap to secure the drain hose in place.



Leveling the Washer

The drum of the washer spins at very high speeds. To minimize vibration, noise, and unwanted movement, the floor must be a solid, level surface.

CAUTION

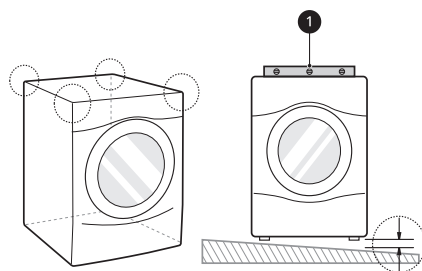
- Using the washer without leveling it may cause excess vibration and noise, leading to a washer malfunction.
- Adjust the leveling feet only as far as necessary to level the washer. Extending the leveling feet more than necessary can cause the washer to vibrate.

NOTE

- Before installing the washer, make sure that the floor is clean, dry and free of dust, dirt, water and oil so the washer feet cannot slide easily. Feet that move or slide on the floor can contribute to excessive vibration and noise.

How to Level the Washer

- 1 Position the washer in its final location.
 - Take special care not to pinch, strain, or crush the water and drain hoses. If you have a carpenter's level ①, you can use it to check that the washer is level. The slope beneath the washer should not exceed **1 inch**, and all 4 leveling feet must rest firmly on the floor.



LG LAUNDRY

DLEX4200_ / DLGX4201_

7.4 cu.ft. Front Load Dryer with TurboSteam™ and Built-In Intelligence

7.4 cu. ft. Ultra Large Capacity
 TurboSteam™ Technology
 AI Fabric Sensor/ Smart Pairing™
 LG ThinQ® Technology / Proactive Customer Care
 Tempered Glass Door
 FlowSense™ Duct Clogging and Lint Filter Indicators
 ENERGY STAR® Certified
 Closet Depth
 LoDecibel™ Quiet Operation
 Reversible Door
 Wrinkle Care Option

AVAILABLE COLORS


LG ThinQ®

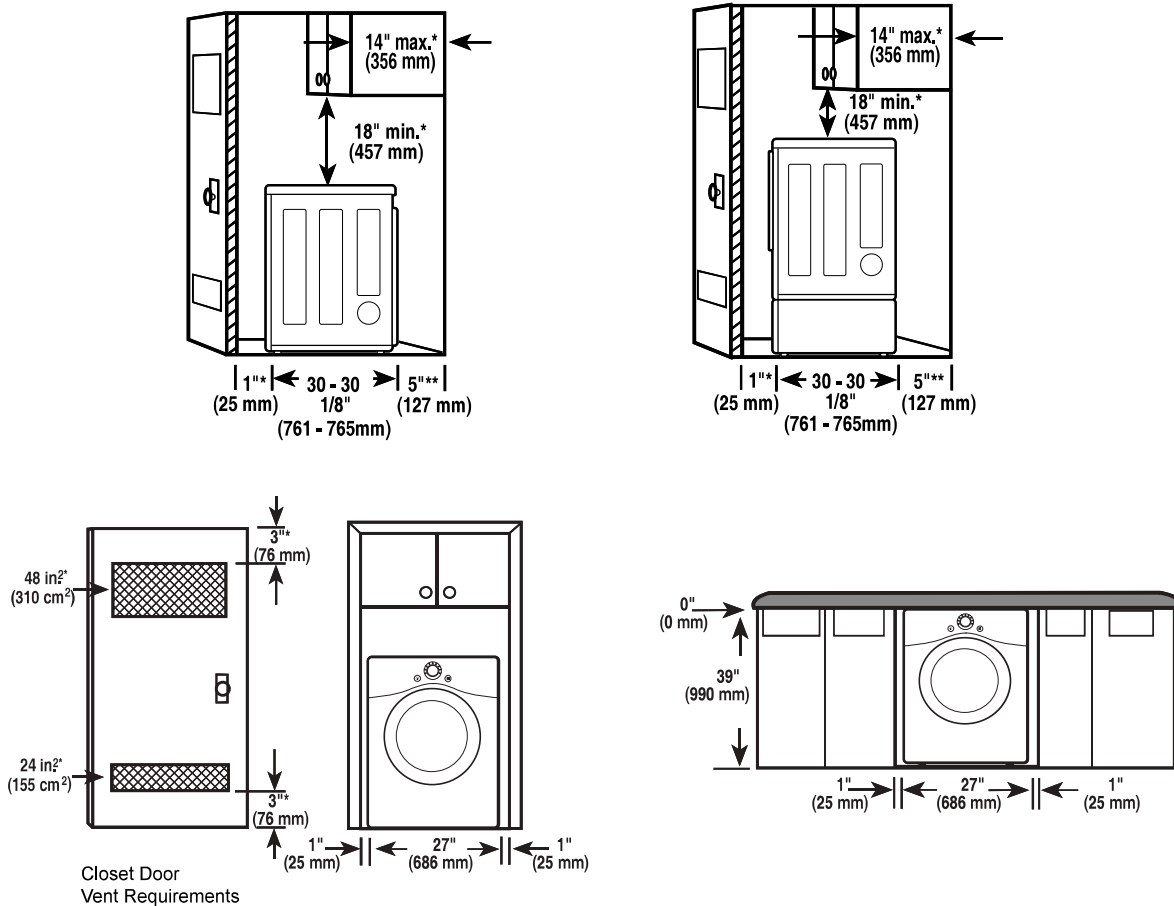

Enjoy new ways to control your home with LG smart appliances

- Use the ThinQ® app to start the laundry while you're out
- Get alerts when the cycle is finished
- With Smart Pairing™, the washer can tell the dryer to select a compatible drying cycle



SUMMARY		FABRIC CARE FEATURES		POWER SOURCE	
Type	Front Load Dryer	A.I Dry	Yes	Ratings	CSA Listed
Capacity	7.4 cu. ft.	Sensor Dry	Yes	Electrical Requirements	120V, 15 Amps (Gas) / 240V 30 Amps (Electric)
Matching Washer	WM4200HWA, WM4200HBA	Precise Temperature Control with Variable Heater	Yes	Type	Electric, Gas
Sensor Dry	Yes	Steam	TurboSteam™	BTU Rating	10,000 Feet
Steam	Yes	CONVENIENCE FEATURES		OPTIONS	
Color	White (W), Black Steel (B)	3 Minute Installation Check	Yes	LP Conversion Kit	383EEL3002D
APPEARANCE		LoDecibel™ Quiet Operation	Yes	Side Venting Kit	383EEL9001B
Intelligent Electronic Controls with LED Display	Yes	End of Cycle Signal	Yes	Pedestal	WDP4W, WDP4B
Dial-A-Cycle™	Yes	Drum Light	Yes	Pedestal (WxHxD)	27 x 14 1/8 x 30 3/4 (50 1/2 D with door open)
Touch Buttons	Yes	Reversible Door	Yes	DIMENSIONS (ELECTRIC)	
DRYER PROGRAMS		FlowSense™ Duct Clogging Indicator	Yes	Product (WxHxD)	27" x 39" x 30 1/8"
No. of Programs	14	Wrinkle Care Option	Yes	Depth with Door Open	51 3/8"
Programs (Sensor Dry)	Normal, Heavy Duty, Bedding, Small Load, Anti Bacterial, Steam-Sanitary™, SteamFresh™, Perm Press, Delicates, Sportswear, Towels, Speed Dry (Manual Dry), Air Dry (Manual Dry), Downloaded	Child Lock	Yes	Carton (WxHxD)	29 1/2" x 42 1/4" x 31 1/4"
No. of Options	12	Venting Option	Electric: 4 Way Venting / Gas: 3 Way Venting	Weight (Product)	125.3 lbs.
Options	More Time, Less Time, Damp Dry Signal, Wrinkle Care, Control Lock, Wi-Fi, Energy Saver, TurboSteam™, Reduce Static, Remote Start, Drum Light, Signal	4 Adjustable Legs	Yes	Weight (Carton)	142.6 lbs.
Temperature Settings	High, Med.High, Medium, Low, Ultra Low	Remaining Time Display/Status Indicator(s)	Yes	DIMENSIONS (GAS)	
Drying Levels	Very Dry, More Dry, Normal Dry, Less Dry, Damp Dry	ThinQ® TECHNOLOGY		Product (WxHxD)	27" x 39" x 30 1/8"
Manual Dry Times	60 min., 50 min., 40 min., 30 min., 20 min., More Time/Less Time	SmartDiagnosis™ (v3.0)	Yes	Depth with Door Open	51 3/8"
		Wi-Fi	Yes	Carton (WxHxD)	29 1/2" x 42 1/4" x 31 1/4"
		Remote Start and Cycle Monitor	Yes	Weight (Product)	139.34 lbs.
		Energy Monitoring	Yes (Wi-Fi)	Weight (Carton)	155.0 lbs.
		ENERGY		LIMITED WARRANTY	
		ENERGY STAR® Certified	Yes	Parts & Labor	1 Year
		CEF	Electric: 3.94 / Gas: 3.49	Drum	10 Years
		MATERIALS AND FINISHES		UPC CODES	
		Aluminized Alloy Steel Drum	Yes	DLEX4200W (White)	048231028417
		Tub Rear	Painted	DLGX4201W (White)	048231028424
		Cabinet	Painted Steel	WM4200HWA (White)	048231028301
		Door	Glass Door w/ Chrome trim	DLEX4200B (Black Steel)	048231028394
		All Available Colors	White (W), Black Steel (B)	DLGX4201B (Black Steel)	048231028400
				WM4200HBA (Black Steel)	048231028295

Clearances



Installation Spacing for Recessed Area or Closet Installation

The following clearances are recommended for this dryer. This dryer has been tested for clearances of 1 inch (2.5 cm) on the sides and rear. Recommended clearances should be considered for the following reasons:

- Additional clearances should be considered for ease of installation and servicing.
- Additional clearances should be considered on all sides of the dryer to reduce noise transfer. For closet installation, with a door, minimum ventilation openings in the top and bottom of the door are required. Louvered doors with equivalent ventilation openings are acceptable.

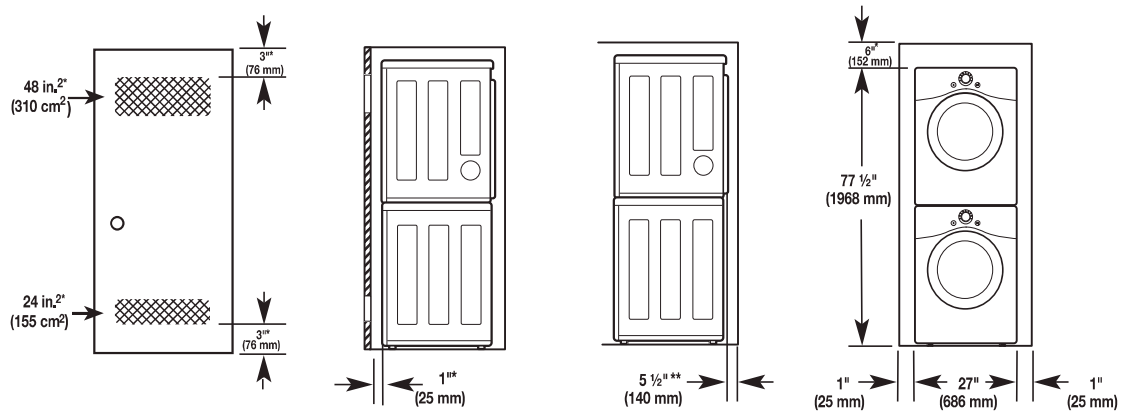
Closet Ventilation Requirements

Closets with doors must have both an upper and lower vent to prevent heat and moisture buildup in the closet. One upper vent opening with a minimum opening of 48 sq. in. (310 cm²) must be installed no lower than 6 feet above the floor. One lower vent opening with a minimum opening of 24 sq. in. (155 cm²) must be installed no more than one foot above the floor. Install vent grilles in the door or cut down the door at the top and bottom to form openings. Louvered doors with equivalent ventilation openings are also acceptable.

NOTE

- There should be at least a little space around the dryer (or any other appliance) to eliminate the transfer of vibration from one appliance to another. If there is enough vibration, it could cause appliances to make noise or come into contact, causing paint damage and further increasing noise.

Installation Spacing for Recessed Area or Closet, with Stacked Washer and Dryer



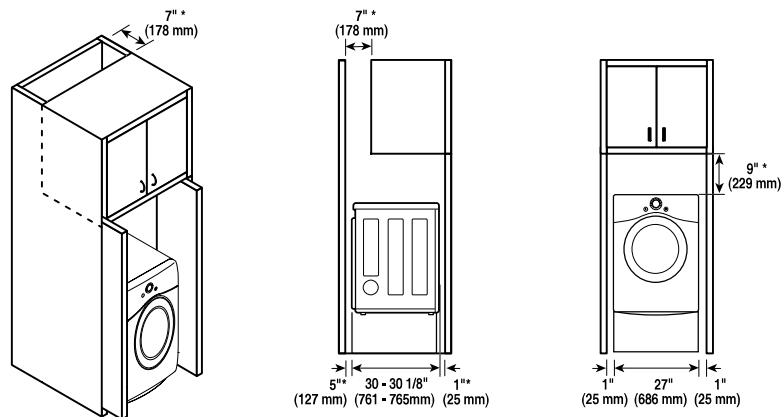
* Required spacing

** For side or bottom venting, 2-inch (5.1 cm) of spacing is allowed.

Installation Spacing for Cabinet

For cabinet installation with a door, minimum ventilation openings in the top of the cabinet are required.

* Required spacing



Venting the Dryer

WARNING

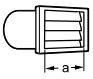
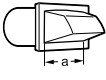
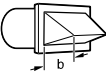
To reduce the risk of fire or explosion, electric shock, property damage, injury to persons or death when using this appliance, follow basic safety precautions, including the following:

- Do not crush or collapse ductwork.
- Do not allow ductwork to rest on or contact sharp objects.
- If connecting to existing ductwork, make sure it is suitable and clean before installing the dryer.
- Venting must conform to local building codes.
- Gas dryers **MUST** exhaust to the outdoors.
- Use only 4-inch (10.2 cm) rigid, semi-rigid or flexible metal ductwork inside the dryer cabinet and for venting outside.
- To reduce the risk of fire, combustion, or accumulation of combustible gases, DO NOT exhaust dryer air into an enclosed and unventilated area, such as an attic, wall, ceiling, crawl space, chimney, gas vent, or concealed space of a building.
- To reduce the risk of fire, DO NOT exhaust the dryer with plastic or thin foil ducting.
- The exhaust duct must be 4-inch (10.2 cm) in diameter with no obstructions. The exhaust duct should be kept as short as possible. Make sure to clean any old ducts before installing your new dryer.
- Rigid, semi-rigid or flexible metal ducting is recommended for use between the dryer and the wall. All non-rigid metal transition duct must be UL-listed. Use of other materials for transition duct could affect drying time.
- DO NOT use sheet metal screws or other fasteners which extend into the duct that could catch lint and reduce the efficiency of the exhaust system. Secure all joints with duct tape.
- Do not exceed the recommended duct length limitations noted in the chart. Failure to follow these instructions may result in extended drying times, fire or death.

WARNING

- Ductwork is not provided with the dryer. You should obtain the necessary ductwork locally. The vent hood should have hinged dampers to prevent backdraft when the dryer is not in use.
- The total length of flexible metal duct must not exceed 8 ft. (2.4 m).

Ductwork

Wall Cap Type	Number of 90° Elbows	Maximum length of 4-inch diameter rigid metal duct
  a: 4" (10.2 cm)	0	65 ft.(19.8 m)
	1	55 ft.(16.8 m)
	2	47 ft.(14.3 m)
	3	36 ft.(11.0 m)
	4	28 ft.(8.5 m)
 b: 2.5" (6.35 cm)	0	55 ft.(16.8 m)
	1	47 ft.(14.3 m)
	2	41 ft.(12.5 m)
	3	30 ft.(9.1 m)
	4	22 ft.(6.7 m)

NOTE

- Deduct 6 ft. (1.8 m) for each additional elbow. Do not use more than four 90° elbows.
- In Canada, only those foil-type flexible ducts, if any, specifically identified for use with the appliance by the manufacturer should be used. In the United States, only those foil-type flexible ducts, if any, specifically identified for use with the appliance by the manufacturer and that comply with the Outline for Clothes Dryer Transition Duct, Subject 2158A, should be used.

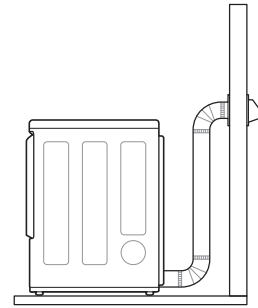
Routing and Connecting Ductwork

NOTE

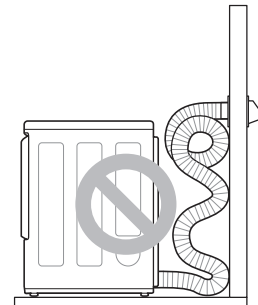
Follow the guidelines below to maximize drying performance and reduce lint buildup and condensation in the ductwork. Ductwork and fittings are **NOT** included and must be purchased separately.

- Use 4-inch (10.2 cm) diameter rigid, semi-rigid or flexible metal ductwork.
- The exhaust duct run should be as short as possible.
- Use as few elbow joints as possible.
- The male end of each section of exhaust duct must point away from the dryer.
- Use duct tape on all duct joints.
- Insulate ductwork that runs through unheated areas in order to reduce condensation and lint buildup on duct surfaces.
- Incorrect or inadequate exhaust systems are not covered by the dryer warranty. Dryer failures or service required because of such exhaust systems will not be covered by the dryer warranty.

Correct Venting



Incorrect Venting



Connecting Electric Dryers

WARNING

To reduce the risk of fire or explosion, electric shock, property damage, injury to persons, or death when using this appliance, follow requirements including the following:

Electrical Requirements for Electric Models Only

- The wiring and grounding must conform to the latest edition of the National Electrical Code, ANSI/NFPA 70 and all applicable local regulations. Please contact a qualified electrician to check your home's wiring and fuses to ensure that your home has adequate electrical power to operate the dryer.
- This dryer must be connected to a grounded metal, permanent wiring system, or an equipment-grounding conductor must be run with the circuit conductors and connected to the equipment-grounding terminal or lead on the dryer.
- The dryer has its own terminal block that must be connected to a separate 240 VAC, 60-Hertz, single-phase circuit, fused at 30 amperes (the circuit must be fused on both sides of the line). ELECTRICAL SERVICE FOR THE DRYER SHOULD BE OF THE MAXIMUM RATE VOLTAGE LISTED ON THE NAMEPLATE. DO NOT CONNECT THE DRYER TO 110-, 115-, OR 120-VOLT CIRCUIT.
- If the branch circuit to dryer is 15 ft. (4.5 m) or less in length, use UL (Underwriters Laboratories) listed No.-10 AWG wire (copper wire only), or as required by local codes. If over 15 ft. (4.5 m), use UL-listed No.-8 AWG wire (copper wire only), or as required by local codes. Allow sufficient slack in wiring so the dryer can be moved from its normal location when necessary.
- The power cord (pigtail) connection between the wall receptacle and the dryer terminal block IS NOT supplied with the dryer. Type of pigtail and gauge of wire must conform to local codes and with instructions on the following pages.

WARNING

- A 4-wire connection is required for all mobile and manufactured home installations, as well as all new construction after January 1, 1996. A 4-wire connection must be used where local codes do not permit grounding through the neutral wire.
- Do not modify the plug and internal wire provided with the dryer.
- The dryer should be connected to a 4-hole outlet.
- If the plug does not fit the outlet, a proper outlet will need to be installed by a qualified electrician.
- Connect the power cord to the terminal block. Each colored wire should be connected to the same color screw. Wire color indicated on manual is connected to the same color screw in the block.
- Grounding through the neutral conductor is prohibited for: (1) new branch-circuit installations, (2) mobile homes, (3) recreational vehicles, and (4) areas where local codes prohibit grounding through the neutral conductor.
- This dryer is supplied with the neutral wire grounded. This white ground wire **MUST BE MOVED** to the neutral terminal when a 4-wire cord is to be used, or where grounding through the neutral conductor is prohibited.

NOTE

- For electrical requirements for mobile or manufactured homes, see **Special Electrical Requirements**.