

Spec Lot Addendum(s)

Project: Pine Valley Forevergreen - Ph 2, Model: 5008(A) - BIRCHWOOD, Lot: 0051  
10, Nick Deluca Court, Vaughan, ONTARIO

Addendum 02/[02] | PRE-STRUCTURAL ORDER

STRUCTURAL EXTRA'S

Basement (Unfinished) Area		
Category	Attribute	Opt. Quantity
BASEMENT WINDOWS		6.00
Opt. Description		
S/I BASEMENT WINDOW SIZE 30" X 24" IN LIEU OF STANDARD - 10" WHITE. WINDOW WELLS MAY BE REQUIRED. 50'S & 60'S		
Notes		
CONCRETE AND DRAIN		1.00
Opt. Description		
S/I BACK -FLOW PREVENTER VALVE (BASEMENT)		
Notes		
Hall 2nd Level		
Category	Attribute	Opt. Quantity
EXT, WINDOWS AND DOORS		1.00
Opt. Description		
ADD SKYLIGHT - FIXED (AS PER PLAN)		
Notes		

Spec Lot Addendum(s)

Project: Pine Valley Forevergreen - Ph 2, Model: 5008(A) - BIRCHWOOD, Lot: 0051  
10, Nick Deluca Court, Vaughan, ONTARIO

Addendum 03/[03] | STRUCTURAL ORDER

STRUCTURAL EXTRA'S

General		
Category	Attribute	Opt. Quantity
Custom Changes		1.00
Opt. Description		
Custom Option		
Notes		
**CUSTOM LAYOUT** SWAP LOCATION OF SHOWER AND TUB AT ENSUITE 2 AND SHARED. INSTALL STANDARD TUB IN ENSUITE 2 // INSTALL GLASS SHOWER ENCLOSURE IN SHARED BATH		
Principal Bedroom		
Category	Attribute	Opt. Quantity
ELECTRICAL		6.00
Opt. Description		
S/I 4" E/S LED INTERIOR POT LIGHT - EACH. WHITE		
Notes		
IN ADDITION TO STANDARD CEILING LIGHT, SEE PLAN FOR LOCATION		
ELECTRICAL SWITCHES		1.00
Opt. Description		
S/I ADDITIONAL INTERIOR SWITCH. SINGLE POLE		
Notes		
FOR POTLIGHTS		
Breakfast Room		
Category	Attribute	Opt. Quantity
EXT, WINDOWS AND DOORS		1.00
Opt. Description		
INCREASE EXSITING REAR GARDEN DOOR OR FRENCH GARDEN DOOR HEIGHT TO APPROX. 96" - TRANSOM MAY BE REQUIRED		
Notes		
Dining Room		
Category	Attribute	Opt. Quantity
ELECTRICAL		4.00
Opt. Description		
S/I 4" E/S LED INTERIOR POT LIGHT - EACH. WHITE		
Notes		
IN ADDITION TO STANDARD CEILING LIGHT		
ELECTRICAL SWITCHES		1.00
Opt. Description		
S/I ADDITIONAL INTERIOR SWITCH. SINGLE POLE		
Notes		
FOR POTLIGHTS		
Principal Ensuite		
Category	Attribute	Opt. Quantity
ELECTRICAL OUTLETS		1.00

Spec Lot Addendum(s)

Project: Pine Valley Forevergreen - Ph 2, Model: 5008(A) - BIRCHWOOD, Lot: 0051  
10, Nick Deluca Court, Vaughan, ONTARIO

Category	Attribute	Opt. Quantity
Opt. Description		
Capped Ceiling Outlet		
Notes		
LOCATE APPROX CENTERED ABOVE TUB		
ELECTRICAL SWITCHES		1.00
Opt. Description		
S/I ADDITIONAL INTERIOR SWITCH. SINGLE POLE		
Notes		
FOR LIGHT ABOVE TUB		
FRAMING		1.00
Opt. Description		
S/I RECESSED SHOWER NICHE [SHAMPOO SHELF]. COMPLETE WITH QUARTZ ON 4 SIDES, APPROX. 12 X 18 INSTALLED VERTICALLY. BASED ON STANDARD FINISHES.		
Notes		
FIXTURES		2.00
Opt. Description		
Align 2-Handle Widespread Lav - BG		
Notes		
FIXTURES		1.00
Opt. Description		
Align 3-Function Rain Shwr/Hand Shwr/S.Bar - BG		
Notes		
FIXTURES		1.00
Opt. Description		
Align Free Standing Tub Filler - BG		
Notes		
Exterior		
Category	Attribute	Opt. Quantity
ELECTRICAL		1.00
Opt. Description		
Exterior Hanging Pendant Light		
Notes		
FRONT PORTICO IN LIEU OF STANDARD COACH LIGHT, USE STANDARD SWITCH		
Foyer		
Category	Attribute	Opt. Quantity
FRAMING		1.00
Opt. Description		
S/I COFFERED CEILING (OPTIONAL PER HALLWAY)		
Notes		
Great Room		
Category	Attribute	Opt. Quantity
ELECTRICAL OUTLETS		1.00
Opt. Description		
S/I 110V WALL RECEPTACLE (NOT ON SEPARATE CIRCUIT)		

Spec Lot Addendum(s)

Project: Pine Valley Forevergreen - Ph 2, Model: 5008(A) - BIRCHWOOD, Lot: 0051  
10, Nick Deluca Court, Vaughan, ONTARIO

Category	Attribute	Opt. Quantity
Notes		
LOCATE APPROX 66" A.F.F. ABOVE FIREPLACE FOR FUTURE TV		
ELECTRICAL		6.00
Opt. Description		
S/I 4" E/S LED INTERIOR POT LIGHT - EACH. WHITE		
Notes		
IN LIEU OF STANDARD CEILING LIGHT, USE STANDARD SWITCH		
NETWORK AND WIRING		1.00
Opt. Description		
S/I CONDUIT PIPE FOR WALL MOUNT TV   LOCATED APPROX. 66" A.F.F. ABOVE FIREPLACE THROUGH BASEMENT TO CABLE LOCATION. SEE PLAN FOR LOCATION.		
Notes		
FRAMING		1.00
Opt. Description		
S/I COFFERED CEILING (OPTIONAL PER ROOM)		
Notes		
WAFFLE CEILING		1.00
Opt. Description		
WAFFLE CEILING, BEAM DETAIL AS PER PLAN (6 BOXES) OPTION # 1 CTRB07		
Notes		
Hall Main Floor		
Category	Attribute	Opt. Quantity
ELECTRICAL		1.00
Opt. Description		
BASE STND - 8 INCLUDED 4" WHITE E/S LED POT LIGHTS with (1) SWITCH. TO BE LOCATED ON MAIN FLOOR IN (1) ROOM ONLY.		
Notes		
IN LIEU OF STANDARD CEILING LIGHTS, SEE PLAN FOR LOCATION		
ELECTRICAL SWITCHES		1.00
Opt. Description		
S/I HINGE SWITCH - EACH INCLUDES 1 LED POTLIGHT (DOOR ACTIVATED)		
Notes		
AT REACH-IN CLOSETS, SEE PLAN FOR LOCATION		
Hall 2nd Level		
Category	Attribute	Opt. Quantity
ELECTRICAL		4.00
Opt. Description		
S/I 4" E/S LED INTERIOR POT LIGHT - EACH. WHITE		
Notes		
IN LIEU OF STANDARD CEILING LIGHT, USE STANDARD SWITCH		
ELECTRICAL SWITCHES		1.00
Opt. Description		
S/I HINGE SWITCH - EACH INCLUDES 1 LED POTLIGHT (DOOR ACTIVATED)		
Notes		

Spec Lot Addendum(s)

Project: Pine Valley Forevergreen - Ph 2, Model: 5008(A) - BIRCHWOOD, Lot: 0051  
10, Nick Deluca Court, Vaughan, ONTARIO

Category	Attribute	Opt. Quantity
AT REACH-IN CLOSETS, SEE PLAN FOR LOCATION		
Kitchen		
Category	Attribute	Opt. Quantity
ELECTRICAL OUTLETS		1.00
Opt. Description		
S/I 240V (40 AMP) RECEPTACLE ON A SEPARATE CIRCUIT		
Notes		
FOR FUTURE WALL OVEN, SEE PLAN FOR LOCATION		
ELECTRICAL OUTLETS		1.00
Opt. Description		
Capped Ceiling Outlet		
Notes		
LOCATE APPROX CENTERED ABOVE ISLAND, SAME SWITCH AS STANDARD. SEE PLAN FOR LOCATION.		
ELECTRICAL OUTLETS		1.00
Opt. Description		
S/I 110V WALL RECEPTACLE (NOT ON SEPARATE CIRCUIT)		
Notes		
FOR GAS COOKTOP		
ELECTRICAL		6.00
Opt. Description		
S/I 4" E/S LED INTERIOR POT LIGHT - EACH. WHITE		
Notes		
ELECTRICAL		1.00
Opt. Description		
Kit/Serv Led Valance Fixture - 50/60" Series only		
Notes		
ELECTRICAL		1.00
Opt. Description		
RELOCATE STANDARD CEILING MOUNT FIXTURE		
Notes		
LOCATE APPROX CENTERED ABOVE ISLAND, SEE PLAN FOR LOCATION		
ELECTRICAL SWITCHES		1.00
Opt. Description		
S/I ADDITIONAL INTERIOR SWITCH. SINGLE POLE		
Notes		
FOR POTLIGHTS		
GASLINE		1.00
Opt. Description		
GAS LINE ROUGH-IN - MAIN FLOOR FOR APPLIANCE		
Notes		
FOR FUTURE GAS COOKTOP		
Custom Changes		1.00
Opt. Description		
Custom Option		

Spec Lot Addendum(s)

Project: Pine Valley Forevergreen - Ph 2, Model: 5008(A) - BIRCHWOOD, Lot: 0051  
10, Nick Deluca Court, Vaughan, ONTARIO

Category	Attribute	Opt. Quantity
Notes		
S/I POTFILLER		
Library		
Category	Attribute	Opt. Quantity
ELECTRICAL		4.00
Opt. Description		
S/I 4" E/S LED INTERIOR POT LIGHT - EACH. WHITE		
Notes		
IN LIEU OF STANDARD CEILING LIGHT, USE STANDARD SWITCH		
FRAMING		1.00
Opt. Description		
S/I COFFERED CEILING (OPTIONAL PER ROOM)		
Notes		
WAFFLE CEILING		1.00
Opt. Description		
WAFFLE CEILING , BEAM DETAIL AS PER PLAN ( 4 BOXES) OPTION # 1 CTRB07		
Notes		
INTERIOR DOORS AND TRIM		2.00
Opt. Description		
S/I APPROX. 8FT FRENCH DOOR 1 LITE CLEAR BEVELLED GLASS, IN LIEU OF STANDARD DOOR, COMPLETE WITH VENDORS STANDARD HARDWARE OFFERING. PRICE PER DOOR.		
Notes		
Mud Room		
Category	Attribute	Opt. Quantity
ELECTRICAL SWITCHES		1.00
Opt. Description		
S/I HINGE SWITCH - EACH INCLUDES 1 LED POTLIGHT (DOOR ACTIVATED)		
Notes		
AT REACH-IN CLOSETS, SEE PLAN FOR LOCATION		
Whole House		
Category	Attribute	Opt. Quantity
INTERIOR DOORS AND TRIM		16.00
Opt. Description		
S/I 8FT HIGH DOOR THROUGHOUT SECOND FLOOR IN LIEU OF STANDARD HEIGHT DOOR. PRICE IS PER DOOR		
Notes		

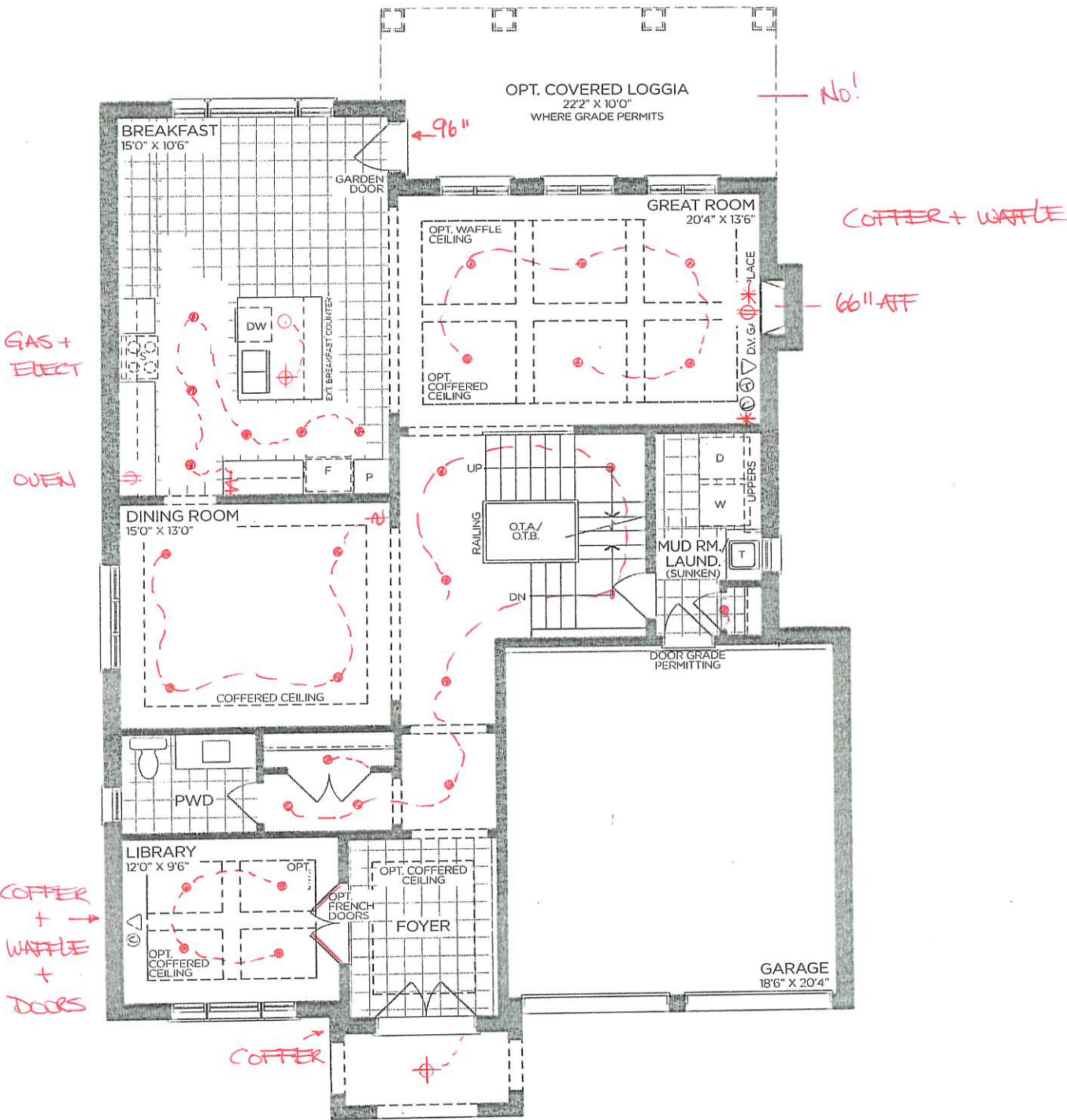
SCHEDULE 'F'



702-51  
SEPT 15 2022  
SEPT 30 2022

The  
Birchwood  
EAGLE'S RIDGE COLLECTION

- Elevation A - 3,568 sq.ft.  
3,568 sq.ft. Opt. 5 Bed  
Plus 107 sq.ft. Fin. Basement Foyer
- Elevation B - 3,559 sq.ft.  
3,603 sq.ft. Opt. 5 Bed  
Plus 107 sq.ft. Fin. Basement Foyer
- Elevation C - 3,577 sq.ft.  
3,610 sq.ft. Opt. 5 Bed  
Plus 107 sq.ft. Fin. Basement Foyer



GROUND FLOOR | ELEV. A

VENDOR

PURCHASER

PURCHASER

GOLDPARK  
WORTH MORE™

Prices, figures, illustrations, sizes, features and finishes are subject to change without notice. Areas and dimensions are approximate and actual usable floor space may vary from the stated area. Layout may be reverse of the unit purchased. E. & O.E. 5008

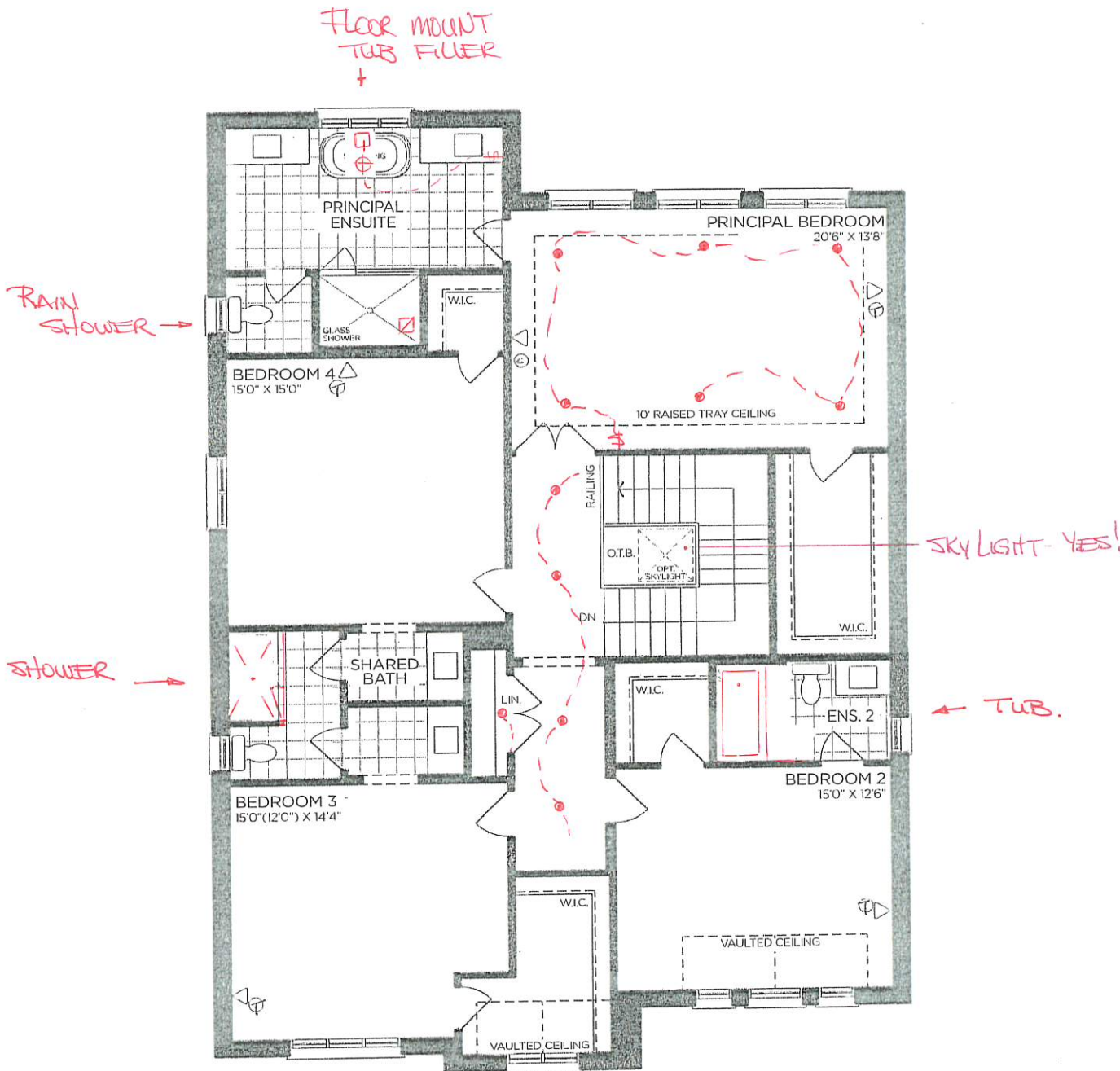
SCHEDULE 'F'



PV2-51  
SEPT 15 2022  
SEPT 30 2022

The  
Birchwood  
EAGLE'S RIDGE COLLECTION

- Elevation A - 3,568 sq.ft.  
3,568 sq.ft. Opt. 5 Bed  
Plus 107 sq.ft. Fin. Basement Foyer
- Elevation B - 3,559 sq.ft.  
3,603 sq.ft. Opt. 5 Bed  
Plus 107 sq.ft. Fin. Basement Foyer
- Elevation C - 3,577 sq.ft.  
3,610 sq.ft. Opt. 5 Bed  
Plus 107 sq.ft. Fin. Basement Foyer



SECOND FLOOR | ELEV. A

VENDOR

PURCHASER

PURCHASER



Prices, figures, illustrations, sizes, features and finishes are subject to change without notice. Areas and dimensions are approximate and actual usable floor space may vary from the stated area. Layout may be reverse of the unit purchased. E. & O.E. 5008

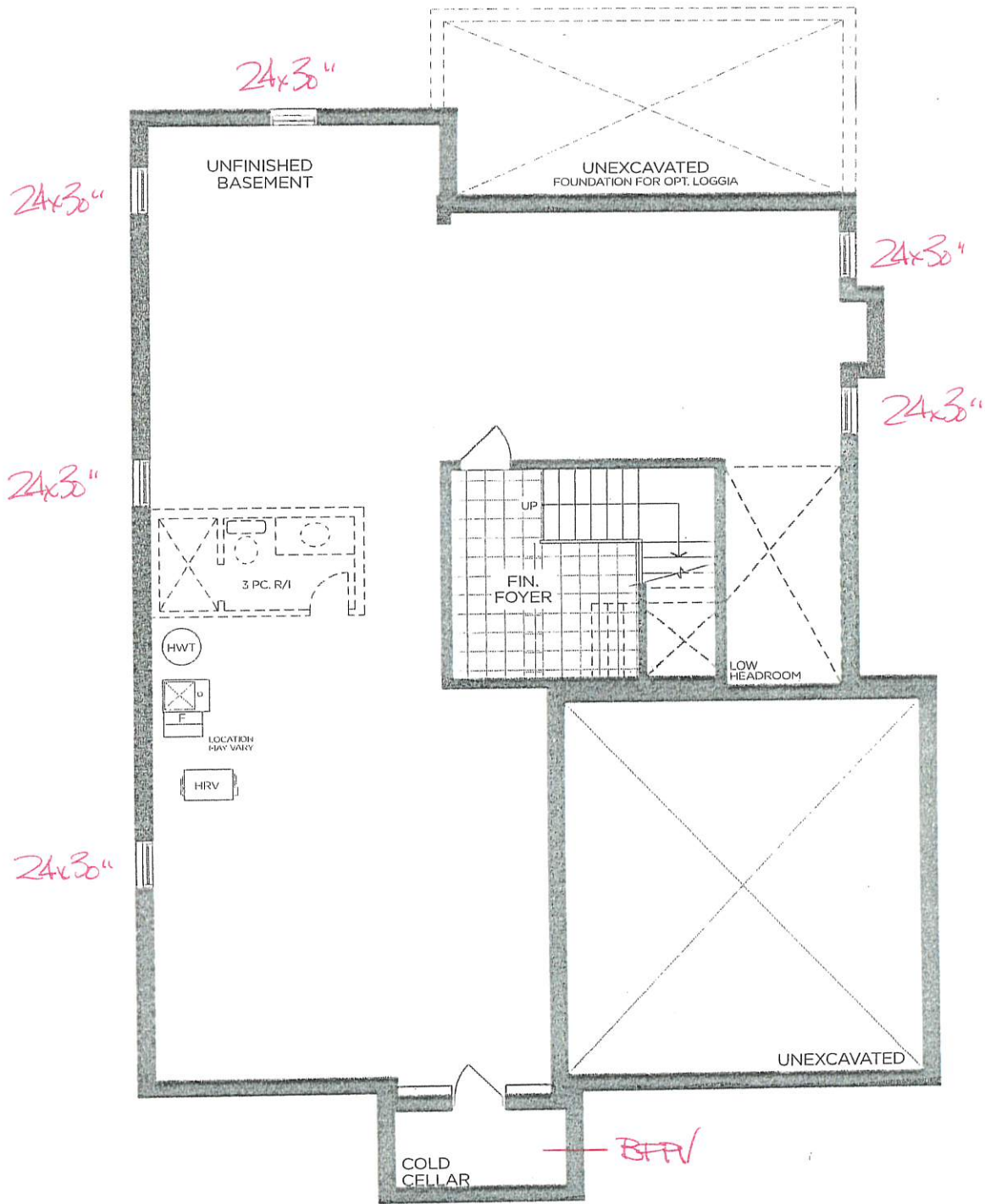
SCHEDULE 'F'



PJ2-51  
SEPT 15 2022  
SEPT 30 2022

The  
Birchwood  
EAGLE'S RIDGE COLLECTION

- Elevation A - 3,568 sq.ft.  
3,568 sq.ft. Opt. 5 Bed  
Plus 107 sq.ft. Fin. Basement Foyer
- Elevation B - 3,559 sq.ft.  
3,603 sq.ft. Opt. 5 Bed  
Plus 107 sq.ft. Fin. Basement Foyer
- Elevation C - 3,577 sq.ft.  
3,610 sq.ft. Opt. 5 Bed  
Plus 107 sq.ft. Fin. Basement Foyer



BASEMENT | ELEV. A

VENDOR

PURCHASER

PURCHASER

GOLD PARK  
WORTH MORE™

Prices, figures, illustrations, sizes, features and finishes are subject to change without notice. Areas and dimensions are approximate and actual usable floor space may vary from the stated area. Layout may be reverse of the unit purchased. E. & O.E. 5008



PINE VALLEY

FOREVERGREEN

UPGRADE KITCHEN EXTRA

## MOEN - MODERN

Pot Filler



Brushed Gold

Chrome

Matte Black

Spot Resistant Stainless

☒  
☐  
☐  
☐

Date:

SEPT 30 2022

Lot:

51

Location:

KITCHEN

Signature:

Signature:

Model S665 Chrome / S665BL Matte Black /  
S665SRS Spot Resist Stainless / S665BG Brushed Gold

**GOLD PARK**  
WORTH MORE™



PINE VALLEY  
FOREVERGREEN

## PLUMBING UPGRADES

### ALIGN

Ceiling Mount: 226651 (12" Arm)



Brushed Gold



Brushed Nickel



Chrome



Matte Black



Date: <u>SEPT 30 2022</u>	Lot: <u>51</u>
Location: <u>PRINCIPAL ENSUITE</u>	
Signature:	Signature:

**Shower with 3-Function Transfer Valve/Trim  
and Slide Bar with Hand Shower + 7" Rain  
Showerhead From Ceiling on 12" Arm**  
(includes plumbing provision for ceiling mount showerhead)  
Model T2192EP/UT4191/3887EP/226651/S176/U361CI/  
62320/A725

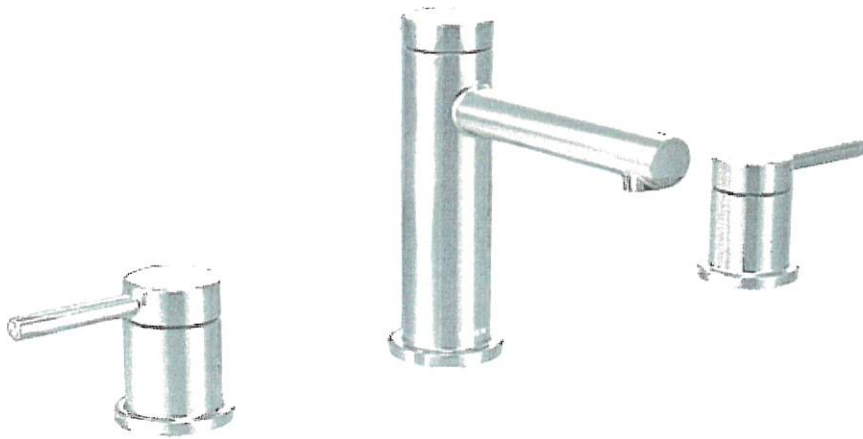
**GOLD PARK**  
WORTH MORE™



PINE VALLEY  
FOREVERGREEN

## PLUMBING UPGRADES

### ALIGN



Brushed Gold

☒ x2

Brushed Nickel

☐

Chrome

☐

Matte Black

☐

Date:

SEPT 30 2022

Lot:

51

Location:

PRINCIPAL ENSUITE

Signature:

Signature:

Two Handle 8" Widespread Lav  
Model T6193/69000

GOLDPARK  
WORTH MORE™



PINE VALLEY  
FOREVERGREEN

PLUMBING UPGRADES

ALIGN



- Brushed Gold ☒
- Brushed Nickel ☐
- Chrome ☐
- Matte Black ☐

Date: SEPT 30 2022	Lot: 51
Location: PRINCIPAL ENSUITE	
Signature:	Signature:

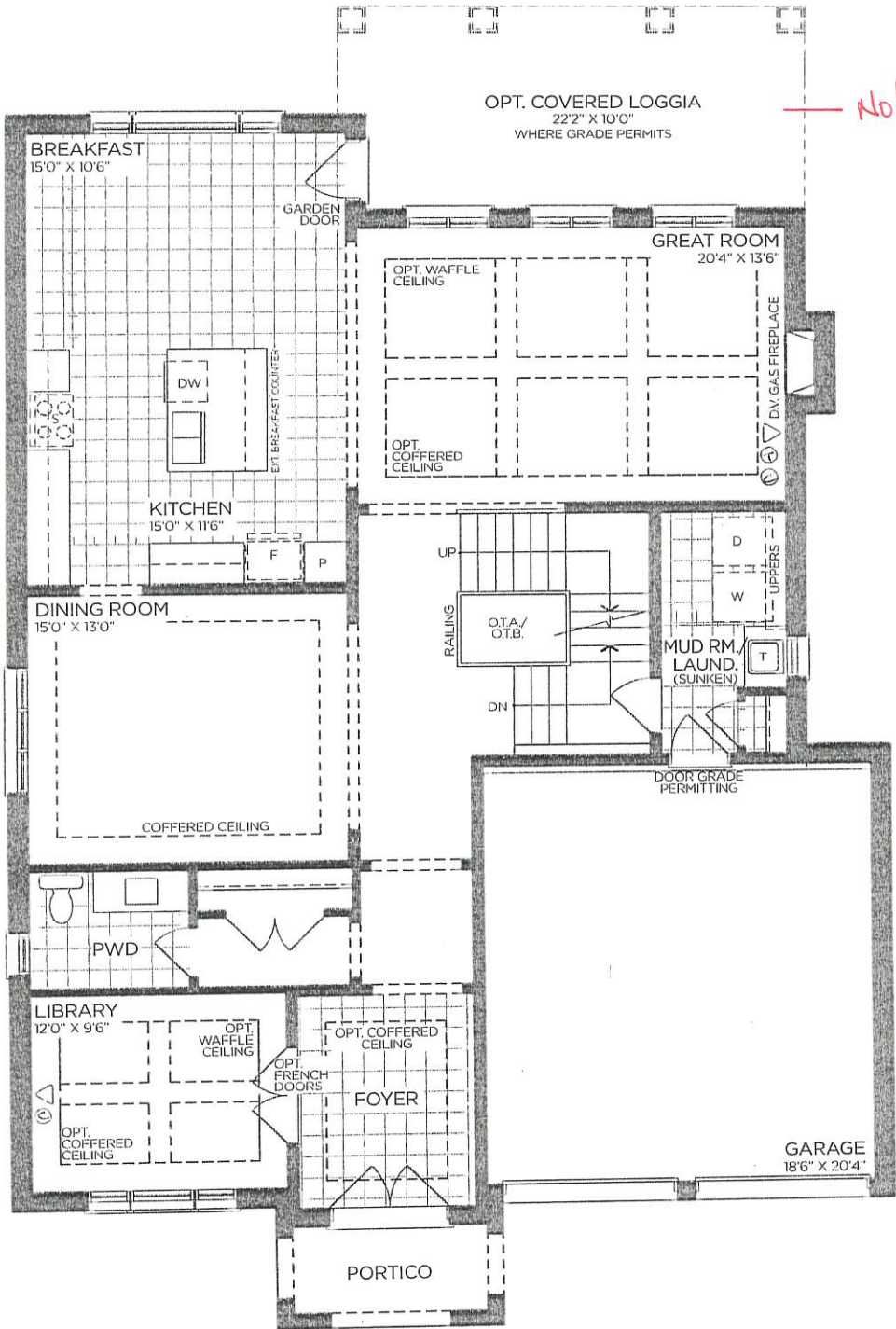
702-51  
SEPT 15 2022



# The Birchwood

## EAGLE'S RIDGE COLLECTION

- ➔ Elevation A - 3,568 sq.ft.  
3,568 sq.ft. Opt. 5 Bed  
Plus 107 sq.ft. Fin. Basement Foyer
- Elevation B - 3,559 sq.ft.  
3,603 sq.ft. Opt. 5 Bed  
Plus 107 sq.ft. Fin. Basement Foyer
- Elevation C - 3,577 sq.ft.  
3,610 sq.ft. Opt. 5 Bed  
Plus 107 sq.ft. Fin. Basement Foyer



GROUND FLOOR | ELEV. A

VENDOR

PURCHASER

PURCHASER

GOLDPARK  
WORTH MORE™

Prices, figures, illustrations, sizes, features and finishes are subject to change without notice. Areas and dimensions are approximate and actual usable floor space may vary from the stated area. Layout may be reverse of the unit purchased. E. & O.E. 5008

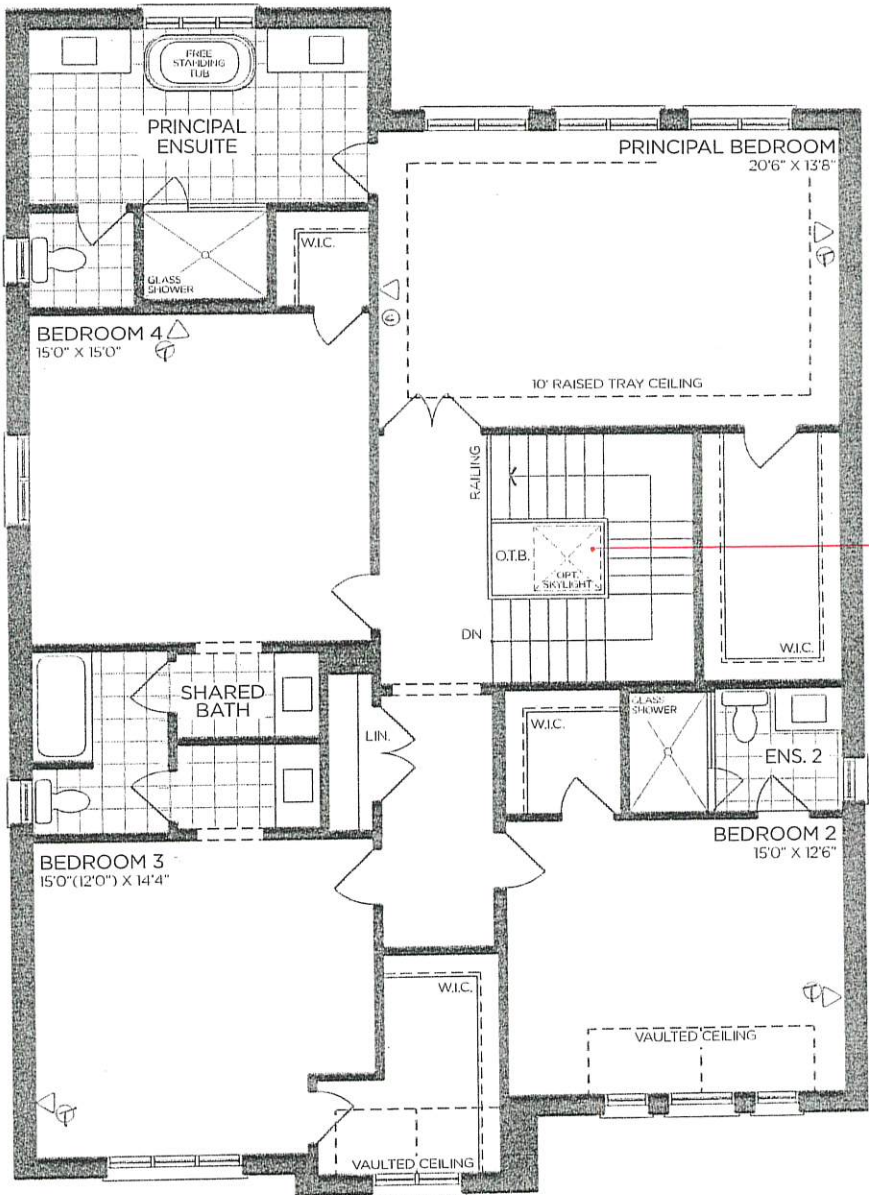


PV2-51  
SEPT 15 2022

# The Birchwood

## EAGLE'S RIDGE COLLECTION

- Elevation A - 3,568 sq.ft.  
3,568 sq.ft. Opt. 5 Bed  
Plus 107 sq.ft. Fin. Basement Foyer
- Elevation B - 3,559 sq.ft.  
3,603 sq.ft. Opt. 5 Bed  
Plus 107 sq.ft. Fin. Basement Foyer
- Elevation C - 3,577 sq.ft.  
3,610 sq.ft. Opt. 5 Bed  
Plus 107 sq.ft. Fin. Basement Foyer



SECOND FLOOR | ELEV. A

VENDOR

PURCHASER

PURCHASER

**GOLDPARK**  
WORTH MORE™

Prices, figures, illustrations, sizes, features and finishes are subject to change without notice. Areas and dimensions are approximate and actual usable floor space may vary from the stated area. Layout may be reverse of the unit purchased. E. & O.E. 5008

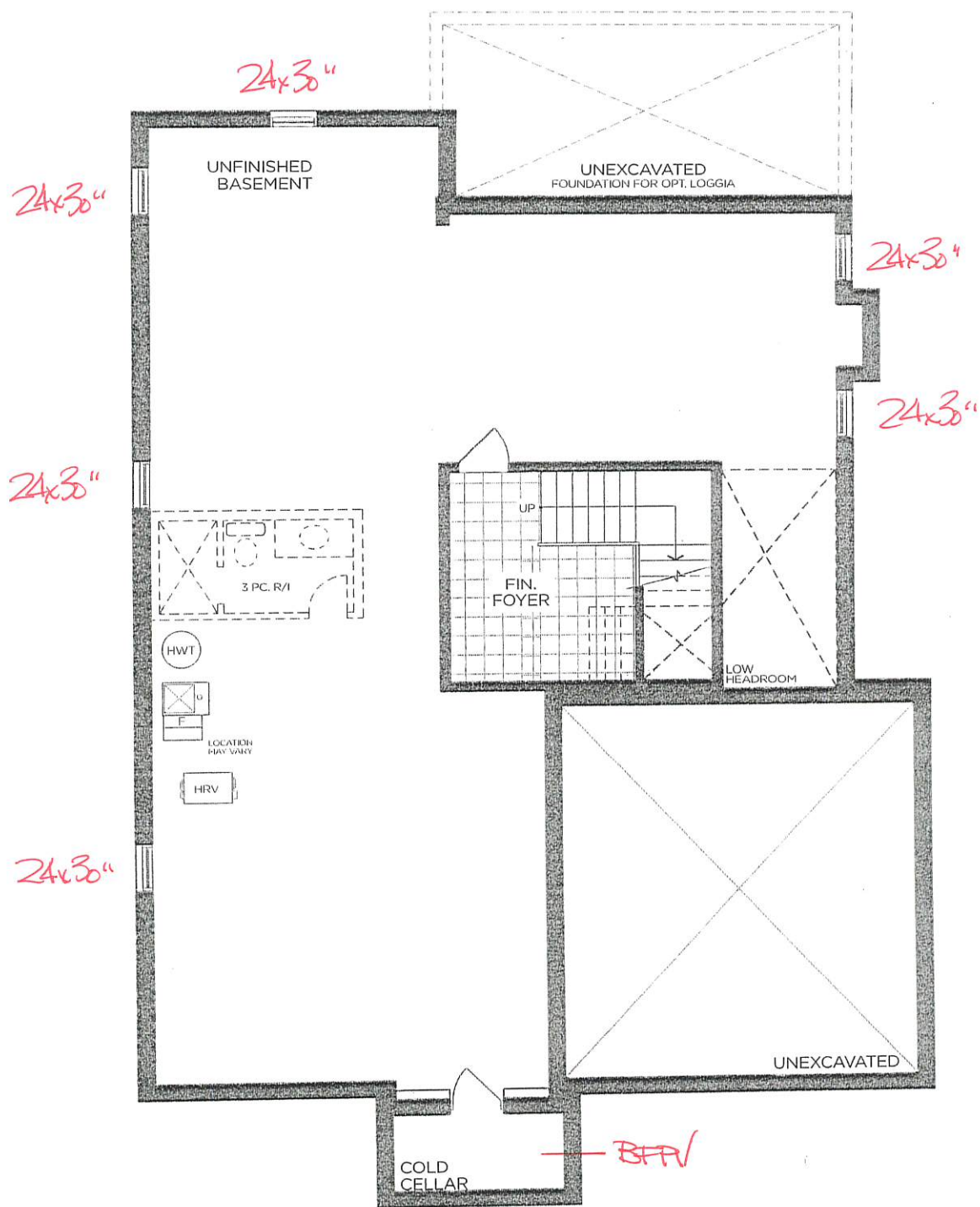
SCHEDULE 'F'



702-51  
SEPT 15 2022

The  
**Birchwood**  
EAGLE'S RIDGE COLLECTION

- Elevation A - 3,568 sq.ft.  
3,568 sq.ft. Opt. 5 Bed  
Plus 107 sq.ft. Fin. Basement Foyer
- Elevation B - 3,559 sq.ft.  
3,603 sq.ft. Opt. 5 Bed  
Plus 107 sq.ft. Fin. Basement Foyer
- Elevation C - 3,577 sq.ft.  
3,610 sq.ft. Opt. 5 Bed  
Plus 107 sq.ft. Fin. Basement Foyer



BASEMENT | ELEV. A

VENDOR

PURCHASER

PURCHASER

**GOLDPARK**  
WORTH MORE™

Prices, figures, illustrations, sizes, features and finishes are subject to change without notice. Areas and dimensions are approximate and actual usable floor space may vary from the stated area. Layout may be reverse of the unit purchased. E. & O.E. 5008