

ELECTRICAL

Invoice	Qty.	Description
3069 164,749 11Oct23	10	BASEMENT: S/1 4" E/S LED INTERIOR POT LIGHT - EACH. WHITE IN LIEU OF STANDARD CEILING LIGHTS, USE STANDARD SWITCHES. SEE PLAN FOR LOCATION.
3069 164,749 11Oct23	5	BASEMENT HALLWAY: S/1 4" E/S LED INTERIOR POT LIGHT - EACH. WHITE IN LIEU OF STANDARD CEILING LIGHTS, USE STANDARD SWITCHES. SEE PLAN FOR LOCATION.
3069 164,749 11Oct23	4	MAIN HALL: S/1 4" E/S LED INTERIOR POT LIGHT - EACH. WHITE IN LIEU OF STANDARD CEILING LIGHTS, USE STANDARD SWITCHES. SEE PLAN FOR LOCATION.
3069 164,749 11Oct23	6	KITCHEN: S/1 4" E/S LED INTERIOR POT LIGHT - EACH. WHITE IN ADDITION TO STANDARD CEILING LIGHTS. SEE PLAN FOR LOCATION.
3069 164,752 11Oct23	1	KITCHEN: S/I ADDITIONAL INTERIOR SWITCH. SINGLE POLE FOR POTLIGHTS
3069 164,741 11Oct23	1	KITCHEN: RELOCATE STANDARD CEILING MOUNT FIXTURE LOCATE APPROX CENTERED ABOVE ISLAND, SEE PLAN FOR LOCATION.
3069 164,753 11Oct23	1	KITCHEN: S/I ADDITIONAL REINFORCED CEILING OUTLET. SUPPORTS UP TO APPROX. 40 LBS. LOCATE APPROX CENTERED ABOVE ISLAND, AS SAME SWITCH AS STANDARD LIGHT. SEE PLAN FOR LOCATION.
3069 164,743 11Oct23	1	KITCHEN: S/I 110V WALL RECEPTACLE ON SEPARATE CIRCUIT FOR GAS APPLIANCE
3069 164,743 11Oct23	1	KITCHEN: S/I 110V WALL RECEPTACLE ON SEPARATE CIRCUIT LOCATE APPROX 66" A.F.F. ABOVE FIREPLACE. SEE PLAN FOR LOCATION.
3069 164,749 11Oct23	4	DINETTE: S/1 4" E/S LED INTERIOR POT LIGHT - EACH. WHITE IN ADDITION TO STANDARD CEILING LIGHTS. SEE PLAN FOR LOCATION.
3069 164,752 11Oct23	1	DINETTE: S/I ADDITIONAL INTERIOR SWITCH. SINGLE POLE FOR POTLIGHTS
3069 164,757 11Oct23	1	DINETTE: S/I HINGED SWITCH - EACH INCLUDES 1 LED POTLIGHT
3069 164,749 11Oct23	2	POWDER ROOM: S/1 4" E/S LED INTERIOR POT LIGHT - EACH. WHITE IN ADDITION TO STANDARD LIGHTS, SAME SWITCH AS STANDARD VANITY LIGHT. SEE PLAN FOR LOCATION.

ELECTRICAL

Invoice	Qty.	Description
3069 164,749 11Oct23	6	UPPER HALL: S/I 4" E/S LED INTERIOR POT LIGHT - EACH. WHITE IN LIEU OF STANDARD CEILING LIGHTS, USE STANDARD SWITCHES. SEE PLAN FOR LOCATION.
3069 164,749 11Oct23	4	PRINCIPAL BEDROOM: S/I 4" E/S LED INTERIOR POT LIGHT - EACH. WHITE INCLUDED IN APS. IN ADDITION TO STANDARD CEILING LIGHTS. SEE PLAN FOR LOCATION.
3069 164,752 11Oct23	1	PRINCIPAL BEDROOM: S/I ADDITIONAL INTERIOR SWITCH. SINGLE POLE FOR POTLIGHTS
3069 164,761 11Oct23	1	PRINCIPAL ENSUITE: S/I SHOWER POT LIGHT: 4 INCH RECESSED SHOWER POT LIGHT COMPLETE WITH SWITCH IN ADDITION TO STANDARD SHOWER POTLIGHT, ON SAME SWITCH.
3069 164,749 11Oct23	2	PRINCIPAL ENSUITE: S/I 4" E/S LED INTERIOR POT LIGHT - EACH. WHITE IN ADDITION TO STANDARD VANITY LIGHT. SEE PLAN FOR LOCATION.
3069 164,752 11Oct23	1	PRINCIPAL ENSUITE: S/I ADDITIONAL INTERIOR SWITCH. SINGLE POLE FOR POTLIGHTS
3069 164,747 11Oct23	1	GARAGE: S/I 240V (50 AMP) RECEPTACLE ON A SEPARATE CIRCUIT FOR FUTURE CAR CHARGER

FRAMING

Invoice	Qty.	Description
3069 164,770 11Oct23	1	KITCHEN: DELETE KITCHEN BULKHEAD, IF POSSIBLE, SITE APPROVAL REQUIRED AND IF MECHANICAL LAYOUTS ALLOW. GAP ABOVE UPPER KITCHEN CABINETS WILL BE PRESENT UNLESS ADDITIONAL CABINETRY IS PURCHASED.
3069 164,775 11Oct23	1	KITCHEN: S/I TALLER UPPER, FURRING PANEL WITH CROWN MOULDING TO CEILING. OPTION ONLY AVAILBLE WITH DELETED BULKHEAD.
3069 164,774 11Oct23	1	PRINCIPAL ENSUITE: S/I RECESSED SHOWER NICHE [SHAMPOO SHELF] - COMPLETE WITH MATCHING STONE ON 4 SIDES, STANDARD TILE, APPROX. 12 X 42 INSTALLED VERTICALLY WITH STONE SHELF DIVIDERS - MUST SPECIFY LOCATION. BASED ON STANDARD FINISHES.

HVAC

Invoice	Qty.	Description
3069 164,780 11Oct23	1	KITCHEN: GAS LINE ROUGH-IN - MAIN FLOOR FOR APPLIANCE

INTERIOR DOORS AND TRIM

Invoice	Qty.	Description
3069 164,784 11Oct23	8	2ND FLOOR: S/I 8FT HIGH DOOR THROUGHOUT SECOND FLOOR IN LIEU OF STANDARD HEIGHT DOOR. PRICE IS PER DOOR

NETWORK AND WIRING

Invoice	Qty.	Description
3069 164,787 11Oct23	1	GREAT ROOM: S/I ADDITIONAL CAT6 ETHERNET OUTLET SEE PLAN FOR LOCATION.
3069 164,789 11Oct23	1	GREAT ROOM: S/I CONDUIT PIPE FOR WALL MOUNT TV LOCATED APPROX. 66" A.F.F. ABOVE FIREPLACE THROUGH BASEMENT TO CABLE LOCATION. SEE PLAN FOR LOCATION.
3069 164,794 11Oct23	1	EXTERIOR: S/I SECURITY PACKAGE - ROUGH - IN WIRING FOR: 1 RING DOOR BELL + 2 CAMERAS - 1 AT FRONT AND 1 AT REAR. COMPONENTS NOT INCLUDED. (CAT6)

PLUMBING

Invoice	Qty.	Description
3069 164,798 11Oct23	1	KITCHEN: S/I ROUGH-IN 1/4" COLD WATER LINE TO FRIDGE
3069 11Oct23 NoCat	1	PRINCIPAL ENSUITE: UPGRADE TO MOEN 'ALIGN' SUITE INCLUDING RAIN SHOWER + TUB FILLER + LAV FAUCET x1 SEE ATTACHED SPEC

Hand-drawn floor plan of a house with various rooms and handwritten annotations. The plan includes the following rooms and features:

- 66" AIR** (Handwritten note at the top)
- PRIV DOOR** (Label near the top left)
- GREAT ROOM** 16'0" X 10'3"
- DINETTE** 16'0" X 9'0"
- EXC. BREAKFAST COUNTER** (Label near the dinette)
- LAUNDRY** (Room with a washing machine icon)
- RAIS** (Room with a ceiling height note: 8'10" CEILING HEIGHT)
- FOYER** (Room with a central staircase labeled "UP" and "DN")
- COVERED PORCH** (Front porch area)
- STEPS MAIN VARY** (Label near the front porch)
- WIC** (Walk-in closet near the primary bedroom)
- GLASS SHOWER** (Room with a shower icon)
- RAIN SHOWER** (Handwritten note with an arrow pointing to the glass shower)
- OVEN** (Handwritten note with an arrow pointing to the kitchen area)
- GARAGE** 9'10" X 19'10"
- DOOR GRADE PERMITTING** (Label near the garage entrance)
- 50 AMP** (Handwritten note with an arrow pointing to the garage area)
- lower level ELEV 4'** (Handwritten note near the garage)
- HALF WALL** (Label near the front porch)

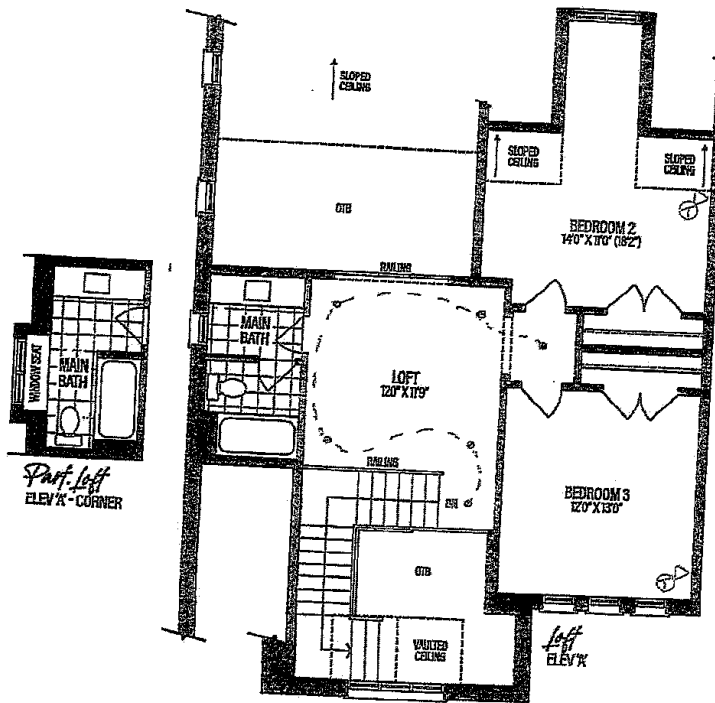
The plan also shows various fixtures like a stove, sink, and refrigerator in the kitchen area, and a toilet in the bathroom area. Hand-drawn dashed lines and circles indicate specific areas of interest or measurements.

M
THE MANORS
AT PINE HAVEN

The Rosecliffe Manor
3 BEDROOMS | 3.5 BATHROOMS

2856 SQ.FT. ELEV. A&B
INCLUDES 894 SQ.FT. OF FINISHED BASEMENT
—2862 SQ.FT. CORNER A
INCLUDES 894 SQ.FT. OF FINISHED BASEMENT

TM-12-1
SEPT 25 2023

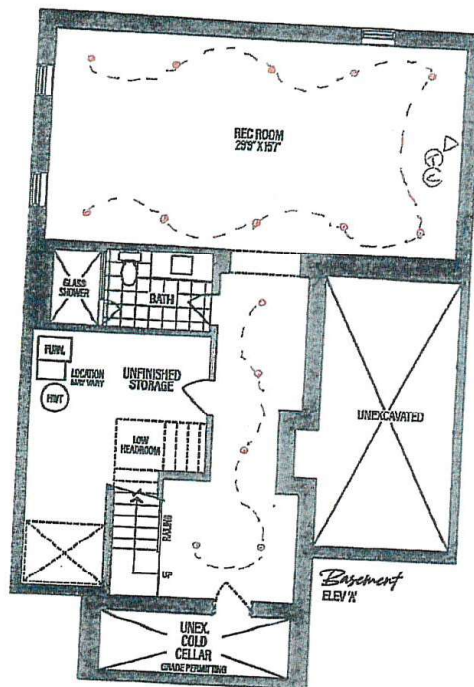


M
THE MANORS
OF PINE VALLEY

The Rosecliffe Manor
3 BEDROOMS | 3.5 BATHROOMS

TM-12-1
SEPT 25, 2023

2856 SQ.FT. ELEV. A&B
INCLUDES 894 SQ.FT. OF FINISHED BASEMENT
→ 2862 SQ.FT. CORNER A
INCLUDES 894 SQ.FT. OF FINISHED BASEMENT





THE MANORS
AT PINE VALLEY

PLUMBING UPGRADES

ALIGN

Ceiling Mount: 226651 (12" Arm) ☒



Brushed Gold ☐
Brushed Nickel ☐
Chrome ☐
Matte Black ☒

Date:	Lot:
-------	------

Location:

Signature:	Signature:
------------	------------

**Shower with 3-Function Transfer Valve/Trim
and Slide Bar with Hand Shower + 7" Rain
Showerhead From Ceiling on 12" Arm**
(includes plumbing provision for ceiling mount showerhead)
Model T2192EP/UT4191/3887EP/226651/S176/U361CI/
62320/A725

GOLDPARK
WORTH MORE™

ALIGN



- Brushed Gold ☐
- Brushed Nickel ☐
- Chrome ☐
- Matte Black ☒ x2

Date:	Lot:
Location:	
Signature:	Signature:

Two Handle 8" Widespread Lav
Model T6193/69000

GOLDPARK
WORTH MORE™

ALIGN



*includes Tub Drain Half Kit

- Brushed Gold ☐
- Brushed Nickel ☐
- Chrome ☐
- Matte Black ☒

Date:	Lot:
-------	------

Location:

Signature:	Signature:
------------	------------

Two Handle Roman Tub
Model T393/4796

GOLDPARK
WORTH MORE™