

ELECTRICAL

Invoice	Qty.	Description
3128 164,749 13Nov23	10	BASEMENT REC ROOM: S/I 4" E/S LED INTERIOR POT LIGHT - EACH. WHITE IN LIEU OF STANDARD CEILING LIGHTS, USE STANDARD SWITCHES. SEE PLAN FOR LOCATION
3128 164,749 13Nov23	6	BASEMENT (near mechanical) S/I 4" E/S LED INTERIOR POT LIGHT - EACH. WHITE IN LIEU OF STANDARD CEILING LIGHTS, USE STANDARD SWITCHES. SEE PLAN FOR LOCATION
3128 164,749 13Nov23	4	BASEMENT (near cold cellar): S/I 4" E/S LED INTERIOR POT LIGHT - EACH. WHITE IN LIEU OF STANDARD CEILING LIGHTS, USE STANDARD SWITCHES. SEE PLAN FOR LOCATION
3128 164,749 13Nov23	5	KITCHEN: S/I 4" E/S LED INTERIOR POT LIGHT - EACH. WHITE IN ADDITION TO STANDARD CEILING LIGHT, SEE PLAN FOR LOCATION
3128 164,741 13Nov23	1	KITCHEN: RELOCATE STANDARD CEILING MOUNT FIXTURE LOCATE APPROX CENTERED ABOVE ISLAND, SEE PLAN FOR LOCATION
3128 164,753 13Nov23	1	KITCHEN: S/I CAPPED CEILING OUTLET LOCATE APPROX CENTERED ABOVE ISLAND, SAME SWITCH AS STANDARD
3128 164,743 13Nov23	1	KITCHEN: S/I 110V WALL RECEPTACLE ON SEPARATE CIRCUIT FOR GAS APPLIANCE
3128 164,752 13Nov23	1	KITCHEN: S/I ADDITIONAL INTERIOR SWITCH. SINGLE POLE FOR POTLIGHTS
3128 164,749 13Nov23	8	BREAKFAST + MAIN HALL: S/I 4" E/S LED INTERIOR POT LIGHT - EACH. WHITE INCLUDED IN APS. BREAKFAST x4 IN ADDITION TO STANDARD CEILING LIGHT, INCLUDES SWITCH. MAIN HALL x4 IN LIEU OF STANDARD CEILING LIGHTS, USE STANDARD SWITCHES. SEE PLAN FOR LOCATION.
3128 164,759 13Nov23	6	GREAT ROOM: S/I LED POT LIGHT AT OPEN TO BELOW HIGH CEILING IN ADDITION TO STANDARD CEILING LIGHT, SEE PLAN FOR LOCATION
3128 164,752 13Nov23	1	GREAT ROOM: S/I ADDITIONAL INTERIOR SWITCH. SINGLE POLE FOR POTLIGHTS
3128 164,742 13Nov23	1	GREAT ROOM: S/I 110V WALL RECEPTACLE (NOT ON SEPARATE CIRCUIT) LOCATE APPROX 66" A .F.F. SEE PLAN FOR LOCATION
3128 164,757 13Nov23	1	MAIN HALL LAUNDRY: S/I HINGED SWITCH - EACH INCLUDES 1 LED POTLIGHT

ELECTRICAL

Invoice	Qty.	Description
3128 164,749 13Nov23	4	PRINCIPAL BEDROOM: S/I 4" E/S LED INTERIOR POT LIGHT - EACH. WHITE IN ADDITION TO STANDARD CEILING LIGHT, SEE PLAN FOR LOCATION
3128 164,752 13Nov23	1	PRINCIPAL BEDROOM: S/I ADDITIONAL INTERIOR SWITCH. SINGLE POLE FOR POTLIGHTS
3128 164,761 13Nov23	1	PRINCIPAL ENSUITE: S/I SHOWER POT LIGHT: LED SHOWER POT LIGHT COMPLETE WITH SWITCH IN ADDITION TO STANDARD, ON SAME SWITCH. SEE PLAN FOR LOCATION
3128 164,749 13Nov23	8	UPPER HALL/LOFT: S/I 4" E/S LED INTERIOR POT LIGHT - EACH. WHITE IN LIEU OF STANDARD CEILING LIGHTS, USE STANDARD SWITCHES. SEE PLAN FOR LOCATION
3128 164,747 13Nov23	1	GARAGE: S/I 240V (50 AMP) RECEPTACLE ON A SEPARATE CIRCUIT FOR FUTURE CAR CHARGER

FORMING

Invoice	Qty.	Description
3127 164,803 13Nov23	1	BASEMENT: S/I BACK -FLOW PREVENTER VALVE (BASEMENT)

FRAMING

Invoice	Qty.	Description
3128 164,770 13Nov23	1	KITCHEN: DELETE KITCHEN BULKHEAD, IF POSSIBLE, SITE APPROVAL REQUIRED AND IF MECHANICAL LAYOUTS ALLOW. GAP ABOVE UPPER KITCHEN CABINETS WILL BE PRESENT UNLESS ADDITIONAL CABINETRY IS PURCHASED.
3128 164,775 13Nov23	1	KITCHEN: S/I TALLER UPPER, FURRING PANEL WITH CROWN MOULDING TO CEILING. OPTION ONLY AVAILABLE WITH DELETED BULKHEAD.

HVAC

Invoice	Qty.	Description
3128 164,780 13Nov23	1	KITCHEN: GAS LINE ROUGH-IN - MAIN FLOOR FOR GAS APPLIANCE

INTERIOR DOORS AND TRIM

Invoice	Qty.	Description
3128 164,784 13Nov23	11	2ND FLOOR: S/I 8FT HIGH DOOR THROUGHOUT SECOND FLOOR IN LIEU OF STANDARD HEIGHT DOOR. PRICE IS PER DOOR. (Hollow core)

NETWORK AND WIRING

Invoice	Qty.	Description
3128 164,789 13Nov23	1	GREAT ROOM: S/I CONDUIT PIPE FOR WALL MOUNT TV LOCATED APPROX. 66" A.F.F. TERMINATING AT CABLE LOCATION. SEE PLAN FOR LOCATION.
3128 164,787 13Nov23	1	GREAT ROOM: S/I ADDITIONAL CAT6 ETHERNET OUTLET
3128 164,794 13Nov23	1	EXTERIOR: S/I SECURITY PACKAGE - ROUGH - IN WIRING FOR: 1 RING DOOR BELL + 2 CAMERAS - 1 AT FRONT AND 1 AT REAR. COMPONENTS NOT INCLUDED. (CAT6)

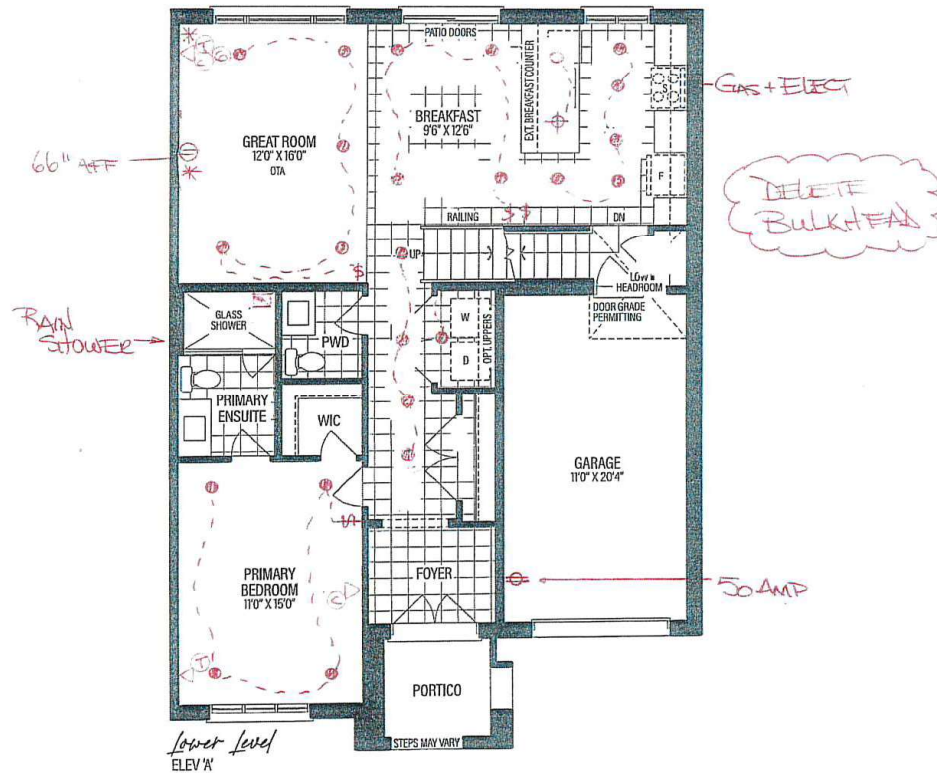
PLUMBING

Invoice	Qty.	Description
3128 13Nov23 NoCat	1	PRINCIPAL ENSUITE: UPGRADE TO MOEN 'ALIGN' SUITE INCLUDING RAIN SHOWER TUB FAUCET + LAV FAUCET
3128 164,798 13Nov23	1	KITCHEN: S/I ROUGH-IN 1/4" COLD WATER LINE TO FRIDGE

WINDOWS - BASEMENT

Invoice	Qty.	Description
3127 164,802 13Nov23	4	BASEMENT: UPGRADE BASEMENT WINDOW TO 24" X 30" IN LIEU OF STANDARD - WHITE. WINDOW WELLS MAY BE REQUIRED.

TM-4-1
NOV 9 2023



VENDOR

PURCHASER

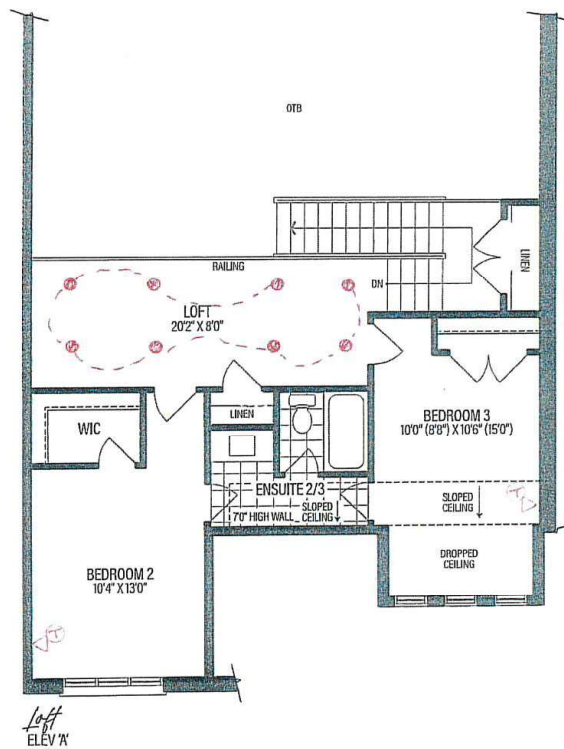
PURCHASER

SCHEDULE 'F'

GOLD PARK
WORTH MORE™

RENDERINGS ARE ARTIST'S CONCEPT. FIGURES, ILLUSTRATIONS, SIZES, FEATURES AND FINISHES ARE SUBJECT TO CHANGE WITHOUT NOTICE. AREAS AND DIMENSIONS ARE APPROXIMATE AND ACTUAL USABLE FLOOR SPACE MAY VARY FROM THE STATED AREA. LAYOUT MAY BE REVERSE OF THE UNIT PURCHASED. E. & O.E. 3105

TXN-4-1
Nov 9 2023



8' DOORS
on 2nd Floor

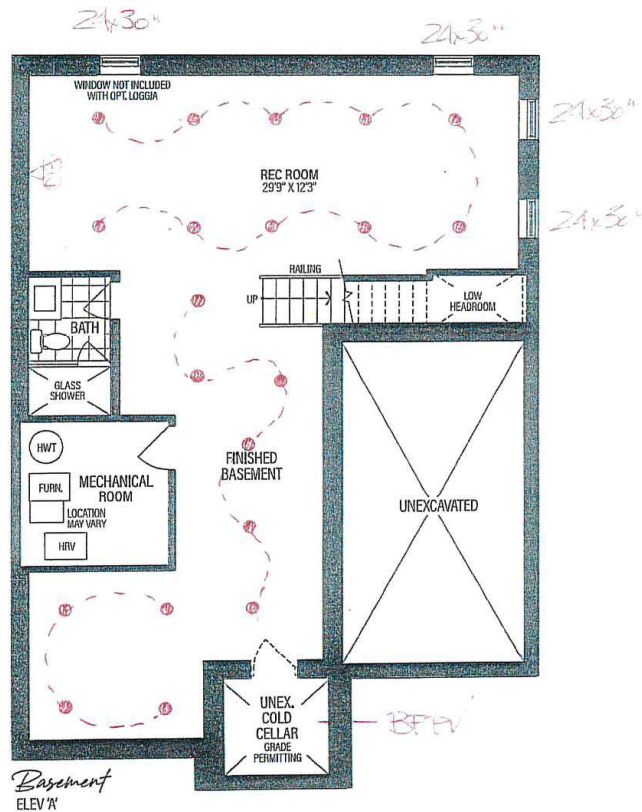
VENDOR
PURCHASER
PURCHASER

SCHEDULE 'F'

GOLD PARK
WORTH MORE™

RENDERINGS ARE ARTIST'S CONCEPT. FIGURES, ILLUSTRATIONS, SIZES, FEATURES AND FINISHES ARE SUBJECT TO CHANGE WITHOUT NOTICE. AREAS AND DIMENSIONS ARE APPROXIMATE AND ACTUAL USABLE FLOOR SPACE MAY VARY FROM THE STATED AREA. LAYOUT MAY BE REVERSE OF THE UNIT PURCHASED. E. & O.E. 3105

TNA-4-1
Nov 9 2023



VENDOR
PURCHASER
PURCHASER

SCHEDULE 'F'

GOLD PARK
WORTH MORE™

RENDERINGS ARE ARTIST'S CONCEPT. FIGURES, ILLUSTRATIONS, SIZES, FEATURES AND FINISHES ARE SUBJECT TO CHANGE WITHOUT NOTICE. AREAS AND DIMENSIONS ARE APPROXIMATE AND ACTUAL USABLE FLOOR SPACE MAY VARY FROM THE STATED AREA. LAYOUT MAY BE REVERSE OF THE UNIT PURCHASED. E. & O.E. 3105



THE MANORS
AT PINE VALLEY

PLUMBING UPGRADES

ALIGN

Ceiling Mount: 226651 (12" Arm)



Brushed Gold



Brushed Nickel



Chrome



Matte Black



Date: Nov 9, 2023	Lot: 4-1
Location: Principle Ensuite	
Signature:	Signature:

**Shower with 3-Function Transfer Valve/Trim
and Slide Bar with Hand Shower + 7" Rain
Showerhead From Ceiling on 12" Arm**
(includes plumbing provision for ceiling mount showerhead)
Model T2192EP/UT4191/3887EP/226651/S176/U361CI/
62320/A725

GOLDPARK
WORTH MORE™



THE MANORS
AT PINE VALLEY

PLUMBING UPGRADES

ALIGN



Brushed Gold

☐

Brushed Nickel

☐

Chrome

☐

Matte Black

☒

Date: Nov 9, 2023	Lot: 4-1
Location: Principle Ensuite	
Signature:	Signature:

Two Handle 8" Widespread Lav
Model T6193/69000

GOLDPARK
WORTH MORE™