

**CROWN MOULDING**

Invoice	Qty.	Description
3148 11Dec23 NoCat	1	LIBRARY: ADD 4-BOX WAFFLE CEILING - CTR-B59/B60
3148 11Dec23 NoCat	1	GREAT ROOM: ADD 5-BOX 'CHANNELED' WAFFLE CEILING - CTR-B59/B60  SEE PLAN FOR LOCATION

**ELECTRICAL**

Invoice	Qty.	Description
3148 164,498 11Dec23	4	LIBRARY: S/1 4" E/S LED INTERIOR POT LIGHT - EACH. WHITE  IN LIEU OF STANDARD CEILING LIGHT, USE STANDARD SWITCH. SEE PLAN FOR LOCATION
3148 164,498 11Dec23	4	MAIN HALL: S/1 4" E/S LED INTERIOR POT LIGHT - EACH. WHITE  IN LIEU OF STANDARD CEILING LIGHT, USE STANDARD SWITCH. SEE PLAN FOR LOCATION
3148 164,498 11Dec23	4	DINING ROOM: S/1 4" E/S LED INTERIOR POT LIGHT - EACH. WHITE  IN ADDITION TO STANDARD CEILING LIGHT, SEE PLAN FOR LOCATION
3148 164,508 11Dec23	1	DINING ROOM: S/I ADDITIONAL INTERIOR SWITCH. SINGLE POLE  FOR POTLIGHTS
3148 164,498 11Dec23	8	KITCHEN: S/1 4" E/S LED INTERIOR POT LIGHT - EACH. WHITE  INCLUDED IN APS, INCLUDES 1 SWITCH. SEE PLAN FOR LOCATION
3148 164,480 11Dec23	1	KITCHEN: RELOCATE STANDARD CEILING MOUNT FIXTURE  LOCATE APPROX CENTERED ABOVE ISLAND, SEE PLAN FOR LOCATION
3148 164,510 11Dec23	1	KITCHEN: S/I CAPPED CEILING OUTLET  LOCATE APPROX CENTERED ABOVE ISLAND, ON SAME SWITCH AS STANDARD CEILING LIGHT. SEE PLAN FOR LOCATION
3148 164,494 11Dec23	1	KITCHEN: S/I 240V (50 AMP) RECEPTACLE ON A SEPARATE CIRCUIT  FOR FUTURE WALL OVEN, SEE PLAN FOR LOCATION
3148 164,484 11Dec23	1	KITCHEN: S/I 110V WALL RECEPTACLE ON SEPARATE CIRCUIT  FOR GAS APPLIANCE
3148 164,498 11Dec23	9	GREAT ROOM: S/1 4" E/S LED INTERIOR POT LIGHT - EACH. WHITE  IN LIEU OF STANDARD CEILING LIGHT, USE STANDARD SWITCH. SEE PLAN FOR LOCATION

**ELECTRICAL**

Invoice	Qty.	Description
3148 164,482 11Dec23	1	GREAT ROOM: S/I 110V WALL RECEPTACLE (NOT ON SEPARATE CIRCUIT)  LOCATE APPROX 66" A.F.F. ABOVE FIREPLACE, SEE PLAN FOR LOCATION
3148 164,498 11Dec23	6	BREAKFAST: S/I 4" E/S LED INTERIOR POT LIGHT - EACH. WHITE  IN LIEU OF STANDARD CEILING LIGHT, USE STANDARD SWITCH. SEE PLAN FOR LOCATION
3148 164,494 11Dec23	1	GARAGE: S/I 240V (50 AMP) RECEPTACLE ON A SEPARATE CIRCUIT  FUTURE CAR CHARGER
3148 164,498 11Dec23	6	UPPER HALL: S/I 4" E/S LED INTERIOR POT LIGHT - EACH. WHITE  IN LIEU OF STANDARD CEILING LIGHT, USE STANDARD SWITCH. SEE PLAN FOR LOCATION
3148 164,498 11Dec23	7	PRINCIPAL BEDROOM: S/I 4" E/S LED INTERIOR POT LIGHT - EACH. WHITE  IN ADDITION TO STANDARD CEILING LIGHT, SEE PLAN FOR LOCATION
3148 164,508 11Dec23	1	PRINCIPAL BEDROOM: S/I ADDITIONAL INTERIOR SWITCH. SINGLE POLE  FOR POTLIGHTS
3148 164,498 11Dec23	2	PRINCIPAL BEDROOM - COSMETIC COUNTER: S/I 4" E/S LED INTERIOR POT LIGHT - EACH. WHITE  IN LIEU OF STANDARD CEILING LIGHT, USE STANDARD SWITCH. SEE PLAN FOR LOCATION
3148 164,510 11Dec23	1	PRINCIPAL ENSUITE: S/I CAPPED CEILING OUTLET  LOCATE APPROX CENTERED ABOVE TUB, SEE PLAN FOR LOCATION
3148 164,508 11Dec23	1	PRINCIPAL ENSUITE: S/I ADDITIONAL INTERIOR SWITCH. SINGLE POLE  FOR LIGHT ABOVE TUB
3148 164,540 11Dec23	2	PRINCIPAL ENSUITE: S/I SHOWER POT LIGHT: LED SHOWER POT LIGHT  IN ADDITION TO STANDARD SHOWER POT LIGHT. SEE PLAN FOR LOCATION

**FORMING**

Invoice	Qty.	Description
3147 164,628 11Dec23	1	BASEMENT: S/I BACK -FLOW PREVENTER VALVE (BASEMENT)

**FRAMING**

Invoice	Qty.	Description
3148 164,468 11Dec23	1	LIBRARY: S/I COFFERED CEILING (OPTIONAL PER ROOM)
3148 164,468 11Dec23	1	GREAT ROOM/BREAKFAST: S/I COFFERED CEILING (OPTIONAL PER ROOM)
3148 164,638 11Dec23	2	PRINCIPAL ENSUITE: S/I RECESSED SHOWER NICHE [SHAMPOO SHELF] - COMPLETE WITH MATCHING STONE ON 4 SIDES, STANDARD TILE, APPROX. 12 X 42 INSTALLED VERTICALLY WITH STONE SHELF DIVIDERS - BASED ON STANDARD FINISHES. SEE PLAN FOR LOCATION

**HVAC**

Invoice	Qty.	Description
3148 164,652 11Dec23	1	KITCHEN: GAS LINE ROUGH-IN - MAIN FLOOR FOR APPLIANCE
3148 164,660 11Dec23	1	KITCHEN: S/I KITCHEN - UPGRADE TO 8" DUCT IN LIEU OF STANDARD OFFERING

**INTERIOR DOORS AND TRIM**

Invoice	Qty.	Description
3148 164,672 11Dec23	21	2ND FLOOR: S/I 8FT HIGH DOOR THROUGHOUT SECOND FLOOR IN LIEU OF STANDARD HEIGHT DOOR. PRICE IS PER DOOR. (Hollow core)

**MISC.**

Invoice	Qty.	Description
3147  11Dec23 NoCat	1	***TRUSS*** PRINCIPAL BEDROOM: ADD OPTIONAL TRAY CEILING - APPROX 10' TRAY CEILING, AS PER PLAN

**NETWORK AND WIRING**

Invoice	Qty.	Description
3148 164,698 11Dec23	1	GREAT ROOM: S/I CONDUIT PIPE FOR WALL MOUNT TV   LOCATED APPROX. 66" A.F.F. ABOVE FIREPLACE THROUGH BASEMENT TO CABLE LOCATION. SEE PLAN FOR LOCATION.
3148 164,804 11Dec23	1	S/I SECURITY PACKAGE - ROUGH - IN WIRING FOR: 1 VIDEO DOOR BELL + 4 CAMERAS. COMPONENTS NOT INCLUDED. (Location Determined by Vendor)

**PLUMBING**

Invoice	Qty.	Description
3148 11Dec23 NoCat	1	PRINCIPAL ENSUITE: UPGRADE TO MOEN 'ALIGN' SUITE: INCLUDES RAIN SHOWER x2 + TUB FILLER + LAV FAUCET x2
3148 164,714 11Dec23	1	PRINCIPAL ENSUITE: S/I 3/4" WATER SUPPLY LINE TO ENSUITE SHOWER IN LIEU OF STANDARD. REQUIRED WITH 2 SHOWER HEADS.

**WINDOWS - BASEMENT**

Invoice	Qty.	Description
3147 164,734 11Dec23	3	BASEMENT: UPGRADE BASEMENT WINDOW TO 24" X 30" IN LIEU OF STANDARD - WHITE. WINDOW WELLS MAY BE REQUIRED.

**WINDOWS AND DOORS**

Invoice	Qty.	Description
3148 164,736 11Dec23	1	BREAKFAST ROOM: INCREASE EXISTING PATIO DOOR TO APPROX 96"- TRANSOM MAY BE REQUIRED

# SCHEDULE 'F'

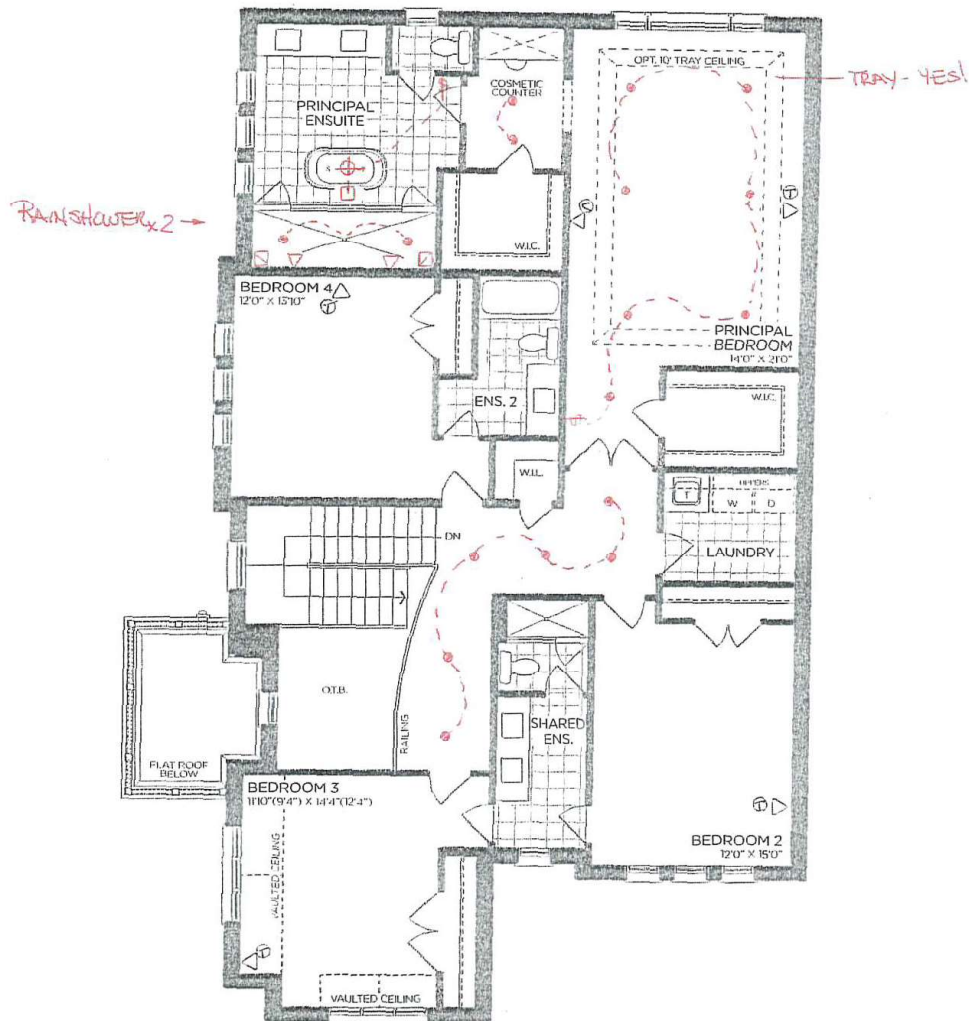


PV2-10  
Nov 30 2023

## The Brookvalley DEER RUN COLLECTION

- Elevation A - 3,702 sq.ft.  
Plus 40 sq.ft. Fin. Basement Foyer
- Elevation B - 3,740 sq.ft.  
Plus 40 sq.ft. Fin. Basement Foyer
- Elevation C - 3,733 sq.ft.  
Plus 40 sq.ft. Fin. Basement Foyer

81 DOORS  
2ND FLOOR



SECOND FLOOR | ELEV. A

VENDOR

PURCHASER

PURCHASER

**GOLD PARK**  
WORTH MORE™

Prices, figures, illustrations, sizes, features and finishes are subject to change without notice. Areas and dimensions are approximate and actual usable floor space may vary from the stated area. Layout may be reverse of the unit purchased. E. & O.E. 4204-C

SCHEDULE 'F'

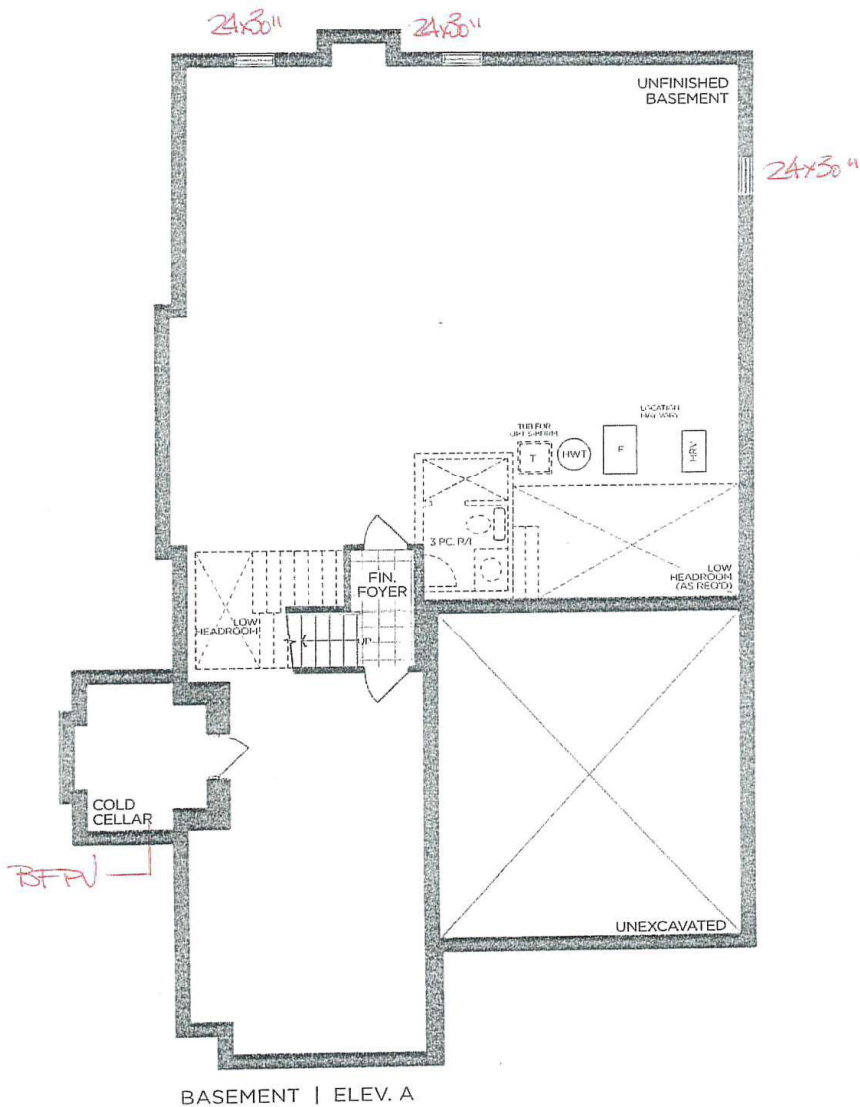


PJ2-10  
Nov 30 2023

# The Brookvalley

## DEER RUN COLLECTION

- Elevation A - 3,702 sq.ft.  
Plus 40 sq.ft. Fin. Basement Foyer
- Elevation B - 3,740 sq.ft.  
Plus 40 sq.ft. Fin. Basement Foyer
- Elevation C - 3,733 sq.ft.  
Plus 40 sq.ft. Fin. Basement Foyer



VENDOR

PURCHASER

PURCHASER



Prices, figures, illustrations, sizes, features and finishes are subject to change without notice. Areas and dimensions are approximate and actual usable floor space may vary from the stated area. Layout may be reverse of the unit purchased. E. & O.E. 4204-C

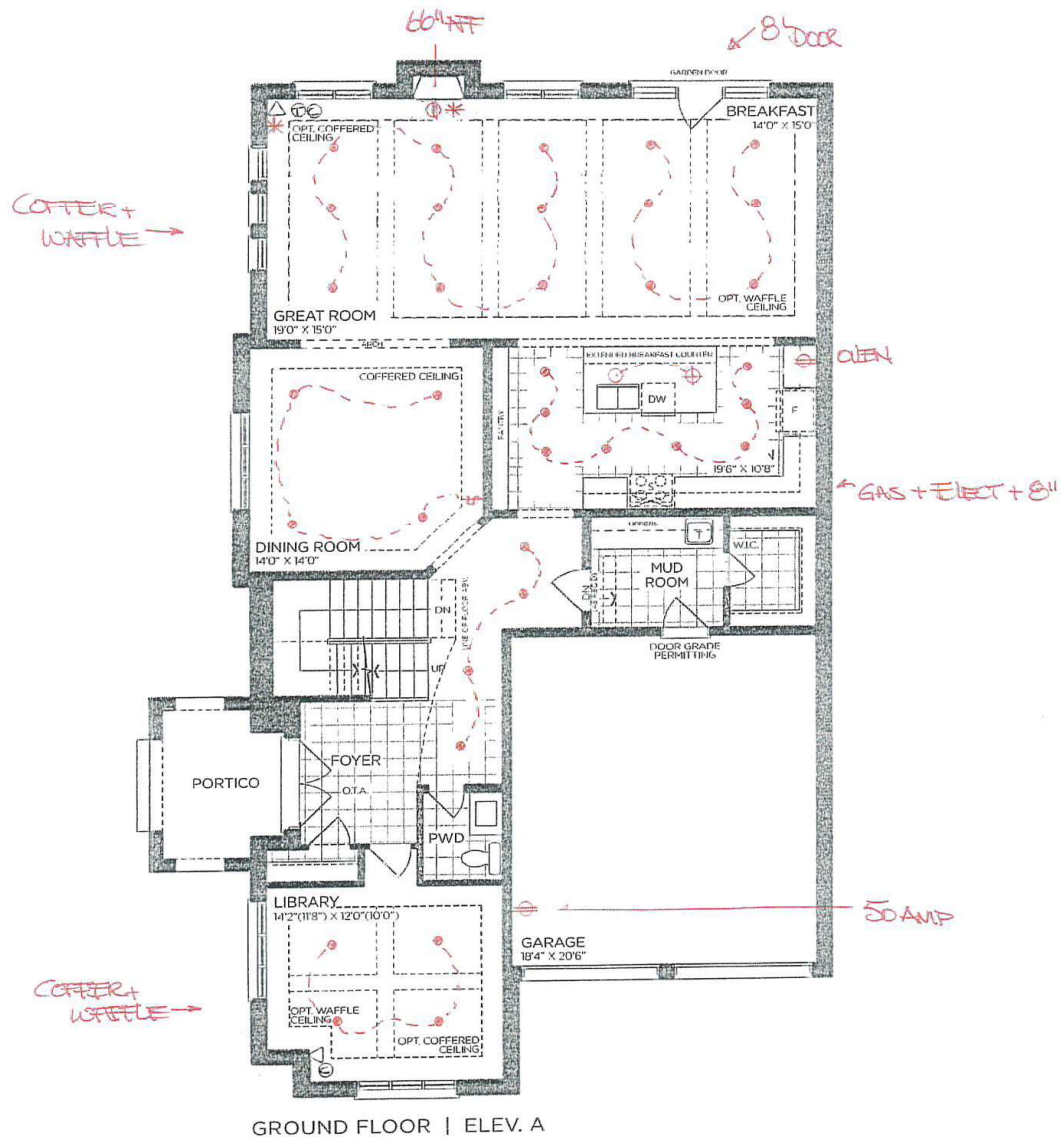
# SCHEDULE 'F'



PJ2-10  
NOV 30 2023

## The Brookvalley DEER RUN COLLECTION

- Elevation A - 3,702 sq.ft.  
Plus 40 sq.ft. Fin. Basement Foyer
- Elevation B - 3,740 sq.ft.  
Plus 40 sq.ft. Fin. Basement Foyer
- Elevation C - 3,733 sq.ft.  
Plus 40 sq.ft. Fin. Basement Foyer



GROUND FLOOR | ELEV. A

VENDOR

PURCHASER

PURCHASER

**GOLDPARK**  
WORTH MORE™

Prices, figures, illustrations, sizes, features and finishes are subject to change without notice. Areas and dimensions are approximate and actual usable floor space may vary from the stated area. Layout may be reverse of the unit purchased. E. & O.E. 4204-C





PINE VALLEY  
FOREVERGREEN

## PLUMBING UPGRADES

### ALIGN

Ceiling Mount: 226651 (12" Arm)



Brushed Gold

Brushed Nickel

Chrome

Matte Black



Date: Dec 4, 2023	Lot: PV2 -10
Location: Principal Ensuite	
Signature:	Signature:

**Shower with 3-Function Transfer Valve/Trim  
and Slide Bar with Hand Shower + 7" Rain  
Showerhead From Ceiling on 12" Arm**  
(includes plumbing provision for ceiling mount showerhead)  
Model T2192EP/UT4191/3887EP/226651/S176/U361CI/  
62320/A725

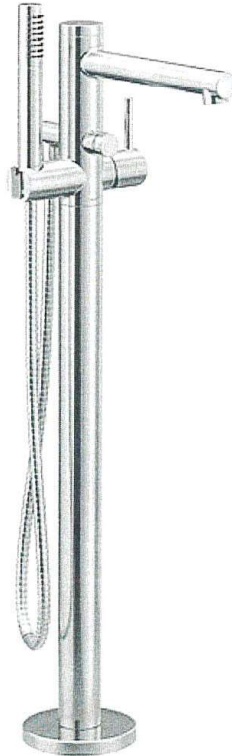
**GOLDPARK**  
WORTH MORE™



PLUMBING UPGRADES

---

## ALIGN



- Brushed Gold ☐
- Brushed Nickel ☐
- Chrome ☐
- Matte Black ☒

Date: Dec 4, 2023	Lot: PV2 - 10
Location: Principal Ensuite	
Signature:	Signature:

Freestanding Floor-Mounted Tub Filler  
 Model 395/TS50100



PINE VALLEY  
FOREVERGREEN

## PLUMBING UPGRADES

### ALIGN



Brushed Gold

☐

Brushed Nickel

☐

Chrome

☐

Matte Black

☒ x2

Date: Dec 4, 2023	Lot: PV 2 - 10
Location: Principal Ensuite	
Signature:	Signature:

Two Handle 8" Widespread Lav  
Model T6193/69000

GOLD PARK  
WORTH MORE™