

CROWN MOULDING

Invoice	Qty.	Description
3167 05Feb24 NoCat	1	GREAT ROOM: ADD 9-BOX WAFFLE CEILING CTR-B59+B60

ELECTRICAL

Invoice	Qty.	Description
3167 164,498 05Feb24	6	MAIN HALL: S/I 4" E/S LED INTERIOR POT LIGHT - EACH. WHITE IN LIEU OF STANDARD CEILING LIGHTS, USE STANDARD SWITCHES. SEE PLAN FOR LOCATION (includes 1 for great room)
3167 164,498 05Feb24	4	DINING ROOM: S/I 4" E/S LED INTERIOR POT LIGHT - EACH. WHITE IN ADDITION TO STANDARD CEILING LIGHT. SEE PLAN FOR LOCATION
3167 164,508 05Feb24	1	DINING ROOM: S/I ADDITIONAL INTERIOR SWITCH. SINGLE POLE FOR POTLIGHTS
3167 164,498 05Feb24	8	GREAT ROOM: S/I 4" E/S LED INTERIOR POT LIGHT - EACH. WHITE INCLUDED IN APS, SEE PLAN FOR LOCATION. INCLUDES 1 SWITCH
3167 164,482 05Feb24	1	GREAT ROOM: S/I 110V WALL RECEPTACLE (NOT ON SEPARATE CIRCUIT) LOCATE APPROX 66" A.F.F. ABOVE FIREPLACE. SEE PLAN FOR LOCATION
3167 164,498 05Feb24	6	KITCHEN: S/I 4" E/S LED INTERIOR POT LIGHT - EACH. WHITE IN ADDITION TO STANDARD CEILING LIGHT, SEE PLAN FOR LOCATION
3167 164,480 05Feb24	1	KITCHEN: RELOCATE STANDARD CEILING MOUNT FIXTURE LOCATE APPROX CENTERED ABOVE ISLAND, SEE PLAN FOR LOCATION
3167 164,510 05Feb24	1	KITCHEN: S/I CAPPED CEILING OUTLET LOCATE APPROX CENTRED ABOVE ISLAND, ON SAME SWITCH AS STANDARD CEILING LIGHT. SEE PLAN FOR LOCATION
3167 164,494 05Feb24	1	KITCHEN: S/I 240V (50 AMP) RECEPTACLE ON A SEPARATE CIRCUIT FOR WALL OVEN
3167 164,494 05Feb24	1	GARAGE: S/I 240V (50 AMP) RECEPTACLE ON A SEPARATE CIRCUIT FOR CAR CHARGER
3167 164,498 05Feb24	6	UPPER HALL: S/I 4" E/S LED INTERIOR POT LIGHT - EACH. WHITE IN LIEU OF STANDARD CEILING LIGHTS, USE STANDARD SWITCHES. SEE PLAN FOR LOCATION

ELECTRICAL

Invoice	Qty.	Description
3167 164,498 05Feb24	7	PRINCIPAL BEDROOM: S/I 4" E/S LED INTERIOR POT LIGHT - EACH. WHITE IN ADDITION TO STANDARD CEILING LIGHT. SEE PLAN FOR LOCATION
3167 164,508 05Feb24	1	PRINCIPAL BEDROOM: S/I ADDITIONAL INTERIOR SWITCH. SINGLE POLE FOR POTLIGHTS
3167 164,498 05Feb24	2	PRINCIPAL BEDROOM HERS WIC: S/I 4" E/S LED INTERIOR POT LIGHT - EACH. WHITE IN ADDITION TO STANDARD CEILING LIGHT, ON SAME SWITCH
3167 164,540 05Feb24	1	PRINCIPAL ENSUITE: S/I SHOWER POT LIGHT: LED SHOWER POT LIGHT IN ADDITION TO STANDARD, ON SAME SWITCH. SEE PLAN FOR LOCATION
3167 164,498 05Feb24	4	STUDY LOFT: S/I 4" E/S LED INTERIOR POT LIGHT - EACH. WHITE IN LIEU OF STANDARD CEILING LIGHTS, USE STANDARD SWITCHES. SEE PLAN FOR LOCATION
3167 164,484 05Feb24	1	KITCHEN: S/I 110V WALL RECEPTACLE ON SEPARATE CIRCUIT REQUIRED FOR GAS APPLIANCE
3188 26Apr24 NoCat	1	KITCHEN **REVISED LOCATION** RELOCATE FRIDGE TO BESIDE OVENS, SEE PLAN FOR LOCATION INCLUDED IN APS
3188 164,526 26Apr24	15	EXTERIOR: S/I EXTERIOR LED SOFFIT POT LIGHT - EACH FRONT UPPER SOFFIT X 2 GARAGE LOWER SOFFIT x3 LEFT SIDE x 3 RIGHT SIDE X 3 REAR X 4
3188 164,508 26Apr24	1	FOYER: S/I ADDITIONAL INTERIOR SWITCH. SINGLE POLE FOR SOFFIT LIGHTS (FRONT / LEFT SIDE / RIGHT SIDE) (rear soffit lights on different switch)
3188 164,508 26Apr24	1	BREAKFAST ROOM: S/I ADDITIONAL INTERIOR SWITCH. SINGLE POLE FOR SOFFIT LIGHTS AT REAR ONLY (other soffit lights on different switch)
3188 164,510 26Apr24	1	PRINCIPAL ENSUITE: S/I CAPPED CEILING OUTLET LOCATE APPROX CENTERED ABOVE TUB
3188 164,484 26Apr24	1	PRINCIPAL ENSUITE: S/I 110V WALL RECEPTACLE ON SEPARATE CIRCUIT LOCATE APPROX 30" A.F.F. - FOR FUTURE TOWEL WARMER. SEE PLAN FOR LOCATION

ELECTRICAL

Invoice	Qty.	Description
3188 164,484 26Apr24	1	ENSUITE 4: S/I 110V WALL RECEPTACLE ON SEPARATE CIRCUIT LOCATE APPROX 30" A.F.F. - FOR FUTURE TOWEL WARMER. SEE PLAN FOR LOCATION
3188 164,534 26Apr24	1	PRINCIPAL ENSUITE: S/I INTERIOR WALL OUTLET: ADDITIONAL INTERIOR GFI RECEPTACLE LOCATE BEHIND TOILET FOR FUTURE BIDET SEAT
3188 164,538 26Apr24	2	GREAT ROOM: S/I ROUGH-IN FOR WALL SCONCE - INCLUDED (1) CAPPED OUTLET- EACH FIXTURE NOT INCLUDED. SWITCH NOT INCLUDED. LOCATE APPROX 74" A.F.F. SEE PLAN FOR LOCATION
3188 164,508 26Apr24	1	GREAT ROOM: S/I ADDITIONAL INTERIOR SWITCH. SINGLE POLE FOR WALL SCONCES
3188 164,534 26Apr24	1	ENSUITE 4: S/I INTERIOR WALL OUTLET: ADDITIONAL INTERIOR GFI RECEPTACLE LOCATE BEHIND TOILET FOR FUTURE BIDET SEAT
3188 164,484 26Apr24	1	KITCHEN: S/I 110V WALL RECEPTACLE ON SEPARATE CIRCUIT FOR WINE FRIDGE
3188 164,492 26Apr24	1	KITCHEN: S/I 240V (40 AMP) RECEPTACLE ON A SEPARATE CIRCUIT FOR SPEED OVEN

FORMING

Invoice	Qty.	Description
3167 164,628 05Feb24	1	BASEMENT: S/I BACK -FLOW PREVENTER VALVE (BASEMENT)

FRAMING

Invoice	Qty.	Description
3167 164,468 05Feb24	1	GREAT ROOM: S/I COFFERED CEILING (OPTIONAL PER ROOM)
3167 164,638 05Feb24	1	PRINCIPAL ENSUITE: S/I RECESSED SHOWER NICHE [SHAMPOO SHELF] - COMPLETE WITH MATCHING STONE ON 4 SIDES, STANDARD TILE, APPROX. 12 X 42 INSTALLED VERTICALLY WITH STONE SHELF DIVIDERS - BASED ON STANDARD FINISHES.
3167 05Feb24 NoCat	1	PRINCIPAL BEDROOM: ADD 10' TRAY CEILING
3188 164,638 26Apr24	1	ENSUITE 4: S/I RECESSED SHOWER NICHE [SHAMPOO SHELF] - COMPLETE WITH MATCHING STONE ON 4 SIDES, STANDARD TILE, APPROX. 12 X 42 INSTALLED VERTICALLY WITH STONE SHELF DIVIDERS - BASED ON STANDARD FINISHES.

GLASS AND MIRROR

Invoice	Qty.	Description
3167 05Feb24 NoCat	1	PRINCIPAL ENSUITE: UPGRADE WC ENCLOSURE TO FROSTED GLASS

HVAC

Invoice	Qty.	Description
3167 164,494 05Feb24	1	KITCHEN: GAS LINE ROUGH-IN - MAIN FLOOR FOR GAS APPLIANCE
3167 164,660 05Feb24	1	KITCHEN: S/I KITCHEN - UPGRADE TO 8" DUCT IN LIEU OF STANDARD OFFERING

INTERIOR DOORS AND TRIM

Invoice	Qty.	Description
3167 164,672 05Feb24	20	2ND FLOOR: S/I 8FT HIGH DOOR THROUGHOUT SECOND FLOOR IN LIEU OF STANDARD HEIGHT DOOR. PRICE IS PER DOOR. (Hollow core)

NETWORK AND WIRING

Invoice	Qty.	Description
3167 164,694 05Feb24	1	GREAT ROOM: S/I ADDITIONAL CAT6 ETHERNET OUTLET SEE PLAN FOR LOCATION
3167 164,698 05Feb24	1	GREAT ROOM: S/I CONDUIT PIPE FOR WALL MOUNT TV LOCATED APPROX. 66" A.F.F. ABOVE FIREPLACE THROUGH BASEMENT TO CABLE LOCATION. SEE PLAN FOR LOCATION.
3167 164,804 05Feb24	1	EXTERIOR: S/I SECURITY PACKAGE - ROUGH - IN WIRING FOR: 1 VIDEO DOOR BELL + 4 CAMERAS. COMPONENTS NOT INCLUDED. (Location Determined by Vendor)
3188 164,694 26Apr24	1	STUDY LOFT: S/I ADDITIONAL CAT6 ETHERNET OUTLET SEE PLAN FOR LOCATION

PLUMBING

Invoice	Qty.	Description
3167 05Feb24 NoCat	1	PRINCIPAL ENSUITE: UPGRADE TO MOEN 'ALIGN' SUITE INCLUDING RAIN SHOWER + TUB FILLER + LAV FAUCETx2
3188 26Apr24 NoCat	1	PRINCIPAL ENSUITE & ENSUITE 4: PLEASE DO *not* INSTALL TOE TESTERS IN THE SHOWER
3188 26Apr24 NoCat	1	ENSUITE 2: UPGRADE TO MOEN RIZON SHOWER FAUCET + LAV FAUCET - BLACK
3188 26Apr24 NoCat	1	ENSUITE 4: UPGRADE TO MOEN ALIGN SUITE - INCLUDING SHOWER SYSTEM (rain shower + hand shower) AND LAV FAUCET no toe tester
3188 164,728 26Apr24	1	KITCHEN: S/I ROUGH-IN 1/4" COLD WATER LINE TO FRIDGE

STAIRS AND RAILINGS

Invoice	Qty.	Description
3188 164,807 26Apr24	1	THRU OUT MAIN STAIRS: UPGRADE STAIRS TO WHITE OAK (MAIN STAIRS BASEMENT TO 2ND FLOOR)

WINDOWS - BASEMENT

Invoice	Qty.	Description
3167 164,734 05Feb24	3	BASEMENT: UPGRADE BASEMENT WINDOW TO 24" X 30" IN LIEU OF STANDARD - WHITE. WINDOW WELLS MAY BE REQUIRED.



CONSTRUCTION SUMMARY

Lot: 14

Model: 42-02 A ROSEDALE

Project/Phase: Pine Valley Forevergreen (2) / 2

WINDOWS AND DOORS

Invoice	Qty.	Description
3167 164,736 05Feb24	1	BREAKFAST: INCREASE EXISTING PATIO DOOR TO APPROX 96"- TRANSOM MAY BE REQUIRED

SCHEDULE 'F'



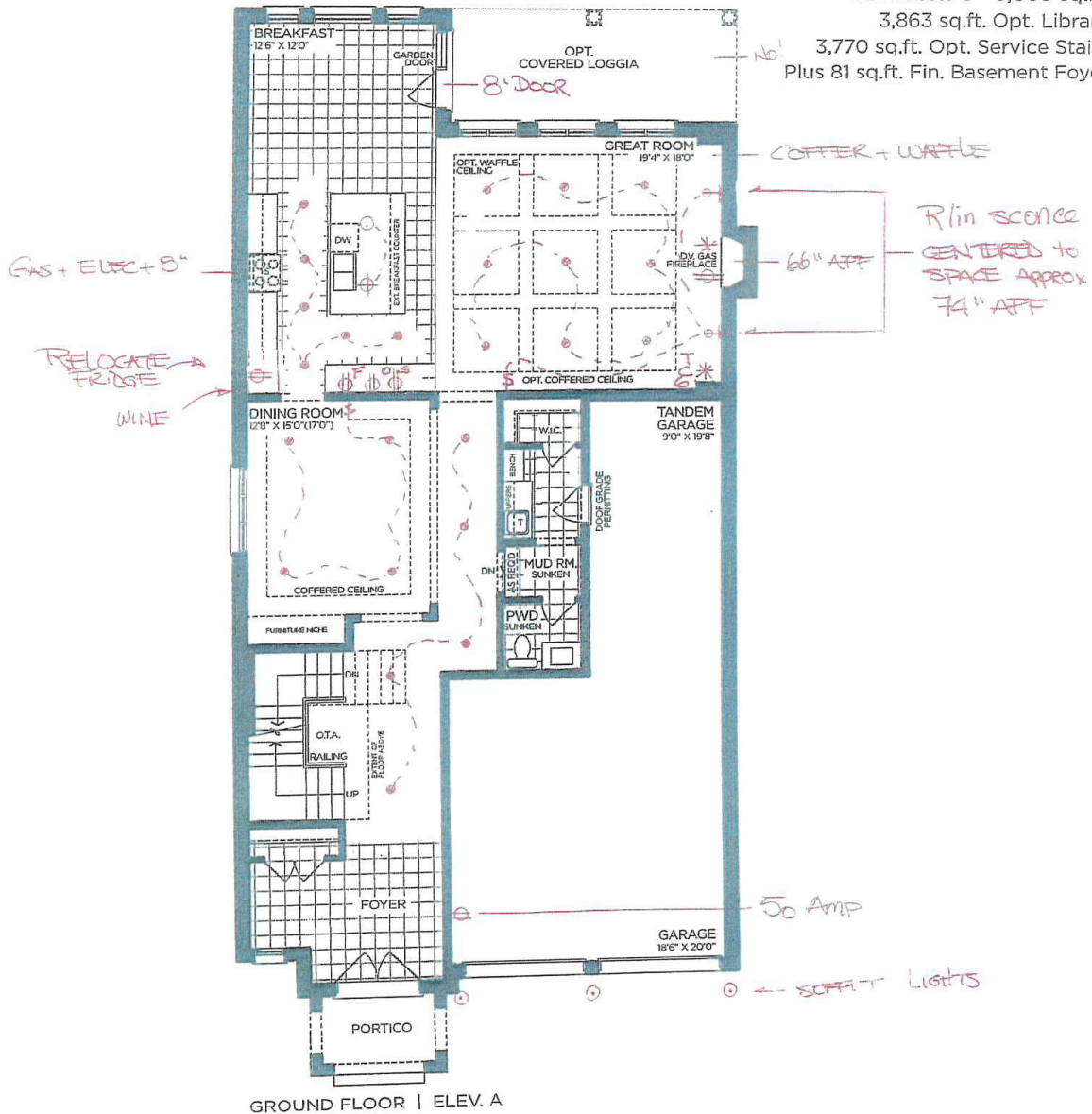
PV2-14
Jan 30 2024

APRIL 26 2024



DEER RUN COLLECTION

Elevation A - 3,733 sq.ft.
3,931 sq.ft. Opt. Library
3,837 sq.ft. Opt. Service Stairs
Plus 81 sq.ft. Fin. Basement Foyer
Elevation B - 3,682 sq.ft.
3,881 sq.ft. Opt. Library
3,787 sq.ft. Opt. Service Stairs
Plus 81 sq.ft. Fin. Basement Foyer
Elevation C - 3,665 sq.ft.
3,863 sq.ft. Opt. Library
3,770 sq.ft. Opt. Service Stairs
Plus 81 sq.ft. Fin. Basement Foyer



VENDOR

PURCHASER

PURCHASER

GOLDPARK
WORTH MORE™

Prices, figures, illustrations, sizes, features and finishes are subject to change without notice. Areas and dimensions are approximate and actual usable floor space may vary from the stated area. Layout may be reverse of the unit purchased. E. & O.E. 4202

SCHEDULE 'F'



RV-14
JAN 30 2024

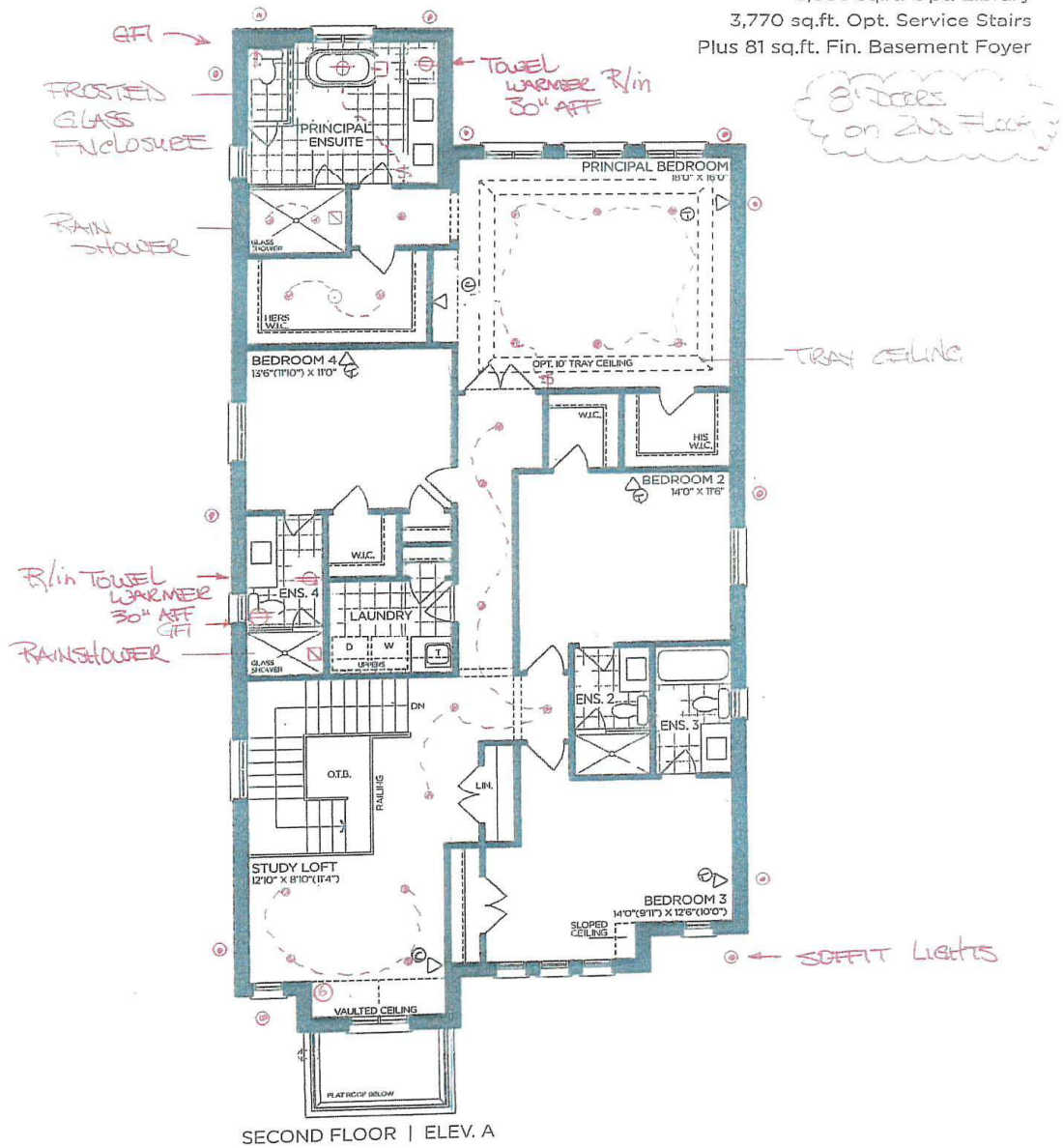
APRIL 26 2024

AB

RV

The Rosedale DEER RUN COLLECTION

Elevation A - 3,733 sq.ft.
3,931 sq.ft. Opt. Library
3,837 sq.ft. Opt. Service Stairs
Plus 81 sq.ft. Fin. Basement Foyer
Elevation B - 3,682 sq.ft.
3,881 sq.ft. Opt. Library
3,787 sq.ft. Opt. Service Stairs
Plus 81 sq.ft. Fin. Basement Foyer
Elevation C - 3,665 sq.ft.
3,863 sq.ft. Opt. Library
3,770 sq.ft. Opt. Service Stairs
Plus 81 sq.ft. Fin. Basement Foyer



SECOND FLOOR | ELEV. A

VENDOR

PURCHASER

PURCHASER

GOLD PARK
WORTH MORE™

Prices, figures, illustrations, sizes, features and finishes are subject to change without notice. Areas and dimensions are approximate and actual usable floor space may vary from the stated area. Layout may be reverse of the unit purchased. E. & O.F. 4702

SCHEDULE 'F'



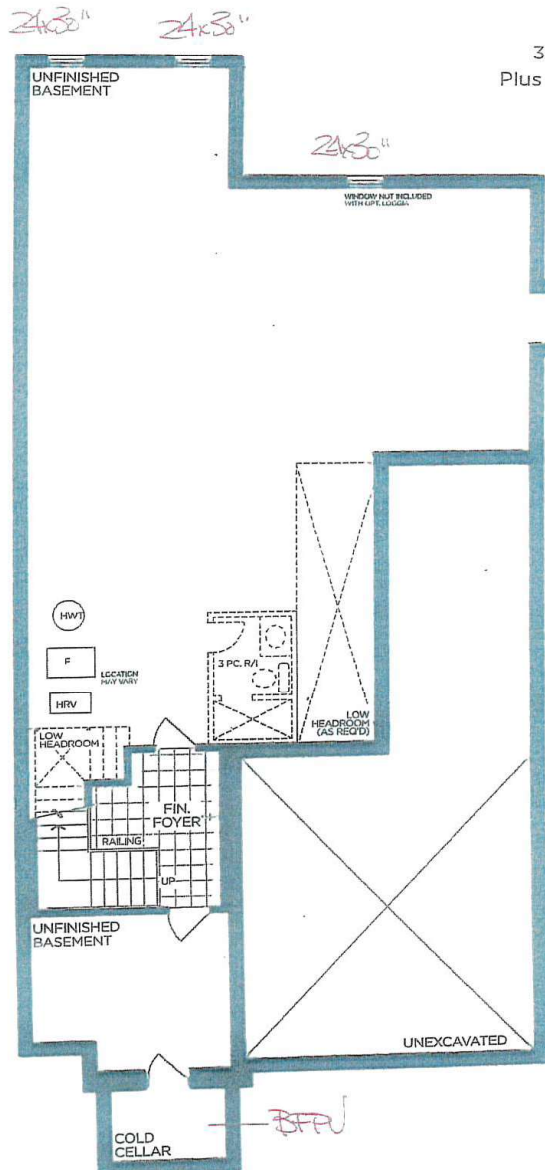
7/2-14
JAN 30 2024

APRIL 26 2024 AB RV

The Rosedale

DEER RUN COLLECTION

- Elevation A - 3,733 sq.ft.
3,931 sq.ft. Opt. Library
3,837 sq.ft. Opt. Service Stairs
Plus 81 sq.ft. Fin. Basement Foyer
- Elevation B - 3,682 sq.ft.
3,881 sq.ft. Opt. Library
3,787 sq.ft. Opt. Service Stairs
Plus 81 sq.ft. Fin. Basement Foyer
- Elevation C - 3,665 sq.ft.
3,863 sq.ft. Opt. Library
3,770 sq.ft. Opt. Service Stairs
Plus 81 sq.ft. Fin. Basement Foyer



BASEMENT | ELEV. A

VENDOR

PURCHASER

PURCHASER

GOLDPARK
WORTH MORE™

Prices, figures, illustrations, sizes, features and finishes are subject to change without notice. Areas and dimensions are approximate and actual usable floor space may vary from the stated area. Layout may be reverse of the unit purchased. E. & O.E. 4202



PLUMBING UPGRADE

RIZON

☒ Wall Mount (as per image)



☒ Chrome
☒ Matte Black

Date:	APR 26 2024	Lot:	PV2 - 14
Location:	ensuite 2		
Signature:		Signature:	

Tub/Shower (wall-mounted showerhead)
Model T2813EP/62320

PLUMBING UPGRADES

RIZON





Brushed Nickel

Chrome

Matte Black

☐
☐
☒

Date: APR 26 2024	Lot: PV2 - 14
Location: Ensuite 2	
Signature: 	Signature: 

Single Handle Lav
Model 6900

GOLDPARK
WORTH MORE™

PLUMBING UPGRADE



ALIGN



- ☒ Ceiling mount 226651 (12" arm)
- ☐ Brushed Gold
- ☐ Brushed Nickle
- ☐ Chrome
- ☒ Black

Date: APR 26 2024	Lot: PV2-14
Location: Ensuite 4	
Signature: AB	Signature: RV

Shower with 3-Function Transfer Valve/Trim and Slide Bar with Hand Shower + 7" Rain Showerhead From Ceiling on 12" Arm (includes plumbing provision for ceiling mount showerhead)

GOLD PARK

PLUMBING UPGRADE

ALIGN



- ☐ Brushed Gold
- ☐ Brushed Nickel
- ☒ Chrome
- ☐ Black

Date: APR 26 2024	Lot: PV2-14
-------------------	-------------

Location: Ensuite 4

Signature: AB	Signature: RV
---------------	---------------

Single Handle Lav
Model 6190

GOLD PARK

ELECTRIC BUILT-IN CONVECTION MICROWAVE OVEN OWNER'S MANUAL

FOUR À MICRO-ONDES ENCASTRÉ ÉLECTRIQUE À CONVECTION MANUEL DU PROPRIÉTAIRE

Table of Contents/Table des matières

BUILT-IN OVEN SAFETY	2	SÉCURITÉ DU FOUR ENCASTRÉ	10
Built-In Oven Safety	2	Sécurité du four encastré	10
MICROWAVE OVEN MAINTENANCE AND CARE	4	ENTRETIEN ET RÉPARATION DU FOUR	12
General Cleaning	4	Nettoyage général	12
INSTALLATION INSTRUCTIONS	5	INSTALLATION INSTRUCTIONS	13
REQUIREMENTS	5	EXIGENCE	13
Tools and Parts	5	Outils et pièces	13
Location Requirements	5	Exigences d'emplacement	13
Electrical Requirements	6	Spécifications électriques	14
INSTALLATIONS	7	INSTALLATIONS	15
Spacer Kit Installation (For Microwave Ovens)	7	Installation de la trousse d'entretoise (pour four à micro-ondes)	15
Prepare Built-In Oven	8	Préparer le four encastré	16
Make Electrical Connection	8	Raccordement électrique	16
Install Microwave Oven	8	Installation du four à micro-ondes	17
Complete Installation	9	Achever l'installation	18

IMPORTANT:

Save for local electrical inspector's use.

IMPORTANT :

À conserver pour consultation par l'inspecteur local des installations électriques.

W11340511B

APR 25 2024

PR2-14
AB Ry

INSTALLATION INSTRUCTIONS

REQUIREMENTS

Tools and Parts

Tools Needed

- Phillips screwdriver
- Measuring tape
- Hand or electric drill (for wall cabinet installations)
- 1" (2.5 cm) drill bit (for wall cabinet installations)
- 1/8" (3 mm) drill bit (for wall cabinet installations)
- Level
- Flat-blade screwdriver

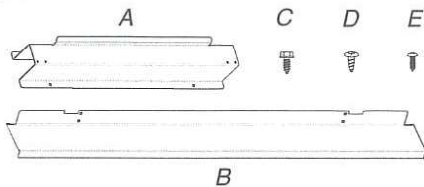
Parts Needed

- UL-listed or CSA-approved conduit connector
- UL-listed wire connectors

Parts Needed – Flush Installation

To order, see the "Online Ordering Information" section of the Quick Start Guide.

Parts Supplied



- A. Spacer bars (2)
- B. Bottom vent (1)
- C. 3/8" (9.5 mm) hex-head washer screws (4)
- D. 3/4" (1.9 cm) pan-head screws (4)
- E. 3/4" (1.9 cm) truss-head screws (2)

Check local codes. Check existing electrical supply. See "Electrical Requirements."

It is recommended that all electrical connections be made by a licensed, qualified electrical installer.

NOTE: Be sure to purchase only JennAir factory-certified parts and accessories for your appliance. Your installation may require additional parts. To order, refer to the contact information referenced in your Quick Start Guide.

Location Requirements

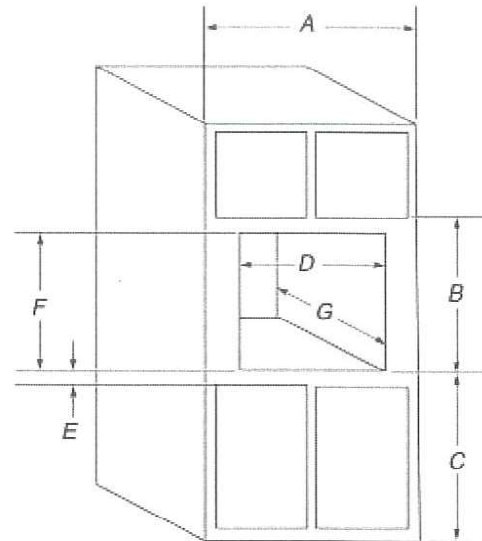
IMPORTANT: Observe all governing codes and ordinances.

- Cabinet opening dimensions that are shown must be used. Given dimensions provide minimum clearance with oven.
- Recessed installation area must provide complete enclosure around the recessed portion of the oven.
- Grounded electrical supply is required. See "Electrical Requirements" section.
- Electrical supply junction box should be located 3" (7.6 cm) maximum below the support surface when the microwave oven is installed in a wall cabinet. A 1" (2.5 cm) minimum diameter hole should have been drilled in the left rear corner of the support surface to pass the appliance cable through to the junction box.
- For installation above single built-in oven, the junction box must located inside upper cabinet.
- If you are installing the junction box on rear wall behind the microwave oven, the junction box must be recessed and located in the upper or lower right or left corner of the cabinet; otherwise, the microwave oven will not fit into the cabinet opening.

- Microwave oven support surface must be solid, level and flush with bottom of cabinet cutout. Floor must be able to support a weight of 90 lbs (41.0 kg).

IMPORTANT: To avoid damage to your cabinets, check with your builder or cabinet supplier to make sure that the materials used will not discolor, delaminate or sustain other damage. This oven has been designed in accordance with the requirements of UL and CSA International and complies with the maximum allowable wood cabinet temperatures of 194°F (90°C).

Cabinet Dimensions



27" (68.6 cm) models

- A. 27" (68.6 cm) minimum cabinet width
- B. 18⁵/₈" (47.3 cm) from bottom of cutout to bottom of upper cabinet door
- C. 40" (101.6 cm) bottom of cutout to floor (recommended)
- D. 25¹/₂" (64.8 cm) cutout width
- E. 1¹/₂" (3.8 cm) minimum bottom of cutout to top of cabinet door
- F. 17⁵/₈" (44.7 cm) recommended cutout height (will fit cutout height from 17³/₈" [44.1 cm] to 17³/₄" [45.1 cm])
- G. 21⁷/₈" (55.5 cm) min. cutout depth

30" (76.2 cm) models

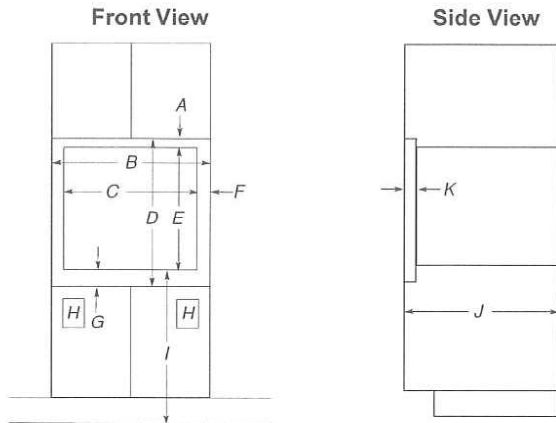
- A. 30" (76.2 cm) minimum cabinet width
- B. 18⁵/₈" (47.3 cm) from bottom of cutout to bottom of upper cabinet door
- C. 40" (101.6 cm) bottom of cutout to floor (recommended)
- D. 28¹/₂" (72.4 cm) cutout width
- E. 1¹/₂" (3.8 cm) minimum bottom of cutout to top of cabinet door
- F. 17⁵/₈" (44.7 cm) recommended cutout height (will fit cutout height from 17³/₈" [44.1 cm] to 17³/₄" [45.1 cm])
- G. 21⁷/₈" (55.5 cm) min. cutout depth

AB RY
PV2-14

APR 25 2024

Cabinet Dimensions - Flush Installation

A 23¹/₄" (59.0 cm) minimum cutout depth is required. These dimensions will result in a 1/4" (6 mm) reveal on the top, a 1/4" (6 mm) reveal on the sides, and a 1/8" (3 mm) reveal on the bottom of the microwave oven. The front face of the cleats and platform will be visible and should be treated as a finished surface.



27" (68.6 cm) Models

- A. 5/8" (16 mm) top cleat*
- B. 27¹/₄" (69.2 cm) minimum width of flush inset cutout
- C. 25⁷/₈" (65.7 cm) minimum width of opening
- D. 19" (48.3 cm) minimum height of flush inset cutout
- E. 17⁵/₈" (44.7 cm) recommended cutout height
- F. 1 1/16" (1.7 cm) side cleat*
- G. 3/4" (1.9 cm) bottom cleat*
- H. Recommended junction box location
- I. 40" (101.6 cm) bottom of cutout to floor (recommended)
- J. 23¹/₄" (59.0 cm) minimum depth of cutout
- K. 1³/₈" (3.5 cm) recess from front of cabinet

30" (76.2 cm) Models

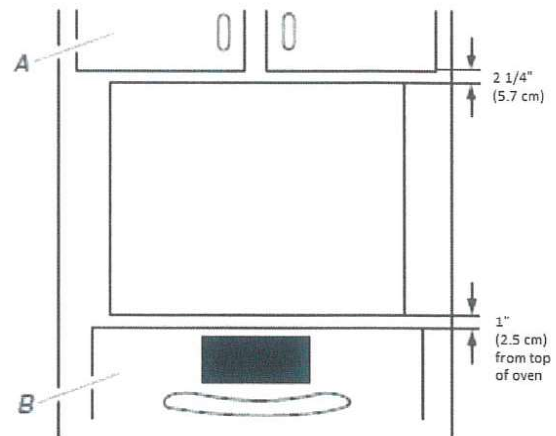
- A. 5/8" (16 mm) top cleat*
- B. 30¹/₄" (76.8 cm) minimum width of flush inset cutout
- C. 28⁷/₈" (73.3 cm) minimum width of opening
- D. 19" (48.3 cm) minimum height of flush inset cutout
- E. 17⁵/₈" (44.7 cm) recommended cutout height
- F. 1 1/16" (1.7 cm) side cleat*
- G. 3/4" (1.9 cm) bottom cleat*
- H. Recommended junction box location
- I. 40" (101.6 cm) bottom of cutout to floor (recommended)
- J. 23¹/₄" (59.0 cm) minimum depth of cutout
- K. 1³/₈" (3.5 cm) recess from front of cabinet

*Cleats must be recessed 1³/₈" (3.5 cm) from the front of the cabinet.

Minimum Installation Clearances

For proper installation, the following minimum clearances must exist above and below the cabinet opening.

Installation Above Single Built-In Oven



- A. Upper cabinet
- B. Lower single oven

Electrical Requirements

GROUNDING INSTRUCTIONS

For a grounded, cord-connected appliance:

This appliance must be grounded. In the event of a malfunction or breakdown, grounding will reduce the risk of electric shock by providing a path of least resistance for electric current. This appliance is equipped with a cord having an equipment-grounding conductor and a grounding plug. The plug must be plugged into an appropriate outlet that is properly installed and grounded in accordance with all local codes and ordinances.

WARNING: Improper connection of the equipment-grounding conductor can result in a risk of electric shock. Check with a qualified electrician or serviceman if you are in doubt as to whether the appliance is properly grounded. Do not modify the plug provided with the appliance: if it will not fit the outlet, have a proper outlet installed by a qualified electrician.

SAVE THESE INSTRUCTIONS

If codes permit and a separate ground wire is used, it is recommended that a qualified electrical installer determine that the ground path and the wire gauge are in accordance with local codes.

Check with a qualified electrical installer if you are not sure the oven is properly grounded.

This oven must be connected to a grounded metal, permanent wiring system.

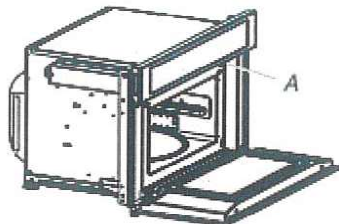
Be sure that the electrical connection and wire size are adequate and in conformance with the National Electrical Code, ANSI/NFPA 70-latest edition or CSA Standards C22.1-94, Canadian Electrical Code, Part 1 and C22.2 No. O-M91-latest edition, and all local codes and ordinances.

A copy of the above code standards can be obtained from:
 National Fire Protection Association
 1 Batterymarch Park
 Quincy, MA 02169-7471
 CSA International
 8501 East Pleasant Valley Road
 Cleveland, OH 44131-5575

Electrical Connection

To properly install your microwave oven, you must determine the type of electrical connection you will be using and follow the instructions provided for it here.

- Microwave oven must be connected to the proper electrical voltage and frequency as specified on the model/serial/rating plate. The model/serial/rating plate is located underneath the control panel along the oven vent.



A. Model/serial/rating plate

- The microwave oven rated 120/240 V, 20 A, has 4 wires (L1, L2, N, and G) in the flex conduit, and should be connected to a 20 A maximum-rated circuit, overcurrent protected on both the L1 and L2 circuits.
- A time-delay fuse or circuit breaker is recommended.
- Flexible cable from the microwave oven should be connected directly to the junction box.
- Do not cut the conduit. The length of conduit provided is for serviceability of the microwave oven.
- A UL listed or CSA approved conduit connector must be provided.
- If the house has aluminum wiring, follow the procedure below:

Connect the aluminum wiring using special connectors and/or tools designed and UL listed for joining copper to aluminum.

Follow the electrical connector manufacturer's recommended procedure. Aluminum/copper connection must conform with local codes and industry accepted wiring practices.

For power requirements, refer to the following table:

Voltage	Microwave With Convection Oven
240 VAC	19.9 A/3250 W
208 VAC	19.9 A/3250 W

INSTALLATIONS

Spacer Kit Installation (For Microwave Ovens)

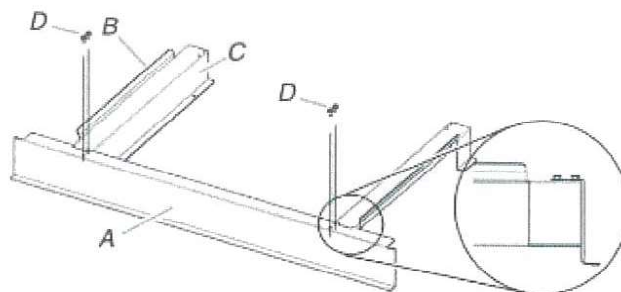
NOTES:

- The microwave oven spacer kit allows the microwave oven to be installed in an $17\frac{7}{16}$ " to $17\frac{7}{8}$ " (44.1 cm to 45.3 cm) maximum cutout height.
- If your cabinet cutout height is more than $17\frac{7}{16}$ " (44.1 cm), you must install the spacer kit. Proceed to "Assemble Spacer Kit."
- If your cabinet cutout height is less than $17\frac{7}{16}$ " (44.1 cm), you do not have to install the spacer kit. Proceed to "Prepare Built-In Microwave Oven."
- For a flush install, a taller bottom vent trim is needed. Please see your Quick Start Guide for a number to call and order this part.

Assemble Spacer Kit

1. Attach the bottom vent to spacer bars using four $\frac{3}{8}$ " (9.5 mm) hex-head washer screws.

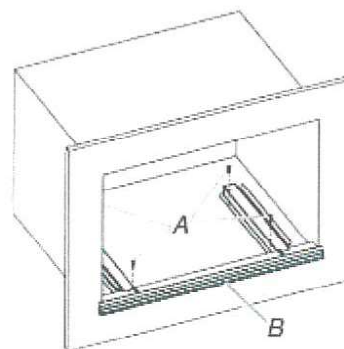
NOTE: Spacer bar flanges should be facing out.



- A. Bottom vent
- B. Spacer bar flange
- C. Spacer bars
- D. $\frac{3}{8}$ " (9.5 mm) hex-head washer screws

Install Spacer Kit

1. Center assembled microwave oven spacer kit against lower front edge of the cabinet cutout.
2. Using an $\frac{1}{8}$ " (3.2 mm) drill bit, drill through the mounting holes in the spacer bars to create pilot holes.
3. Attach the assembled spacer kit to the cabinet using four $\frac{3}{4}$ " (1.9 cm) (pan-head screws). Do not overtighten screws.



- A. $\frac{3}{4}$ " (1.9 cm) flat-head screws
- B. Spacer kit assembly

PR2-14 APR 25 2024

Prepare Built-In Oven

1. Decide on the final location for the oven. Locate existing wiring to avoid drilling into or severing wiring during installation.

⚠ WARNING

Excessive Weight Hazard

Use two or more people to move and install or uninstall appliance.

Failure to do so can result in back or other injury.

2. To avoid floor damage, set the Microwave Oven or Oven onto cardboard prior to installation. Do not use handle or any portion of the front frame for lifting.
3. Remember to remove bottom vent from the foam packing on top of the Oven.
4. Remove the shipping materials and tape from the Microwave Oven or Oven.
5. Remove the hardware package from inside the bag containing literature.
6. Remove and set aside racks and other parts from inside the Microwave Oven or Oven.
7. Move Microwave Oven or Oven and cardboard close to the oven's final location.

Make Electrical Connection

⚠ WARNING



Electrical Shock Hazard

Disconnect power before servicing.

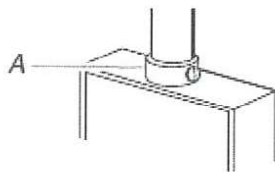
Use 12 gauge copper wire.

Electrically ground oven.

Failure to follow these instructions can result in death, fire, or electrical shock.

The microwave oven is manufactured with a neutral (white) power supply wire and a cabinet-connected green (or bare) ground wire.

1. Disconnect power.
2. Feed the flexible conduit from the oven through the opening in the cabinet.
3. Remove junction box cover, if it is present.
4. Install a UL listed or CSA approved conduit connector to the junction box.

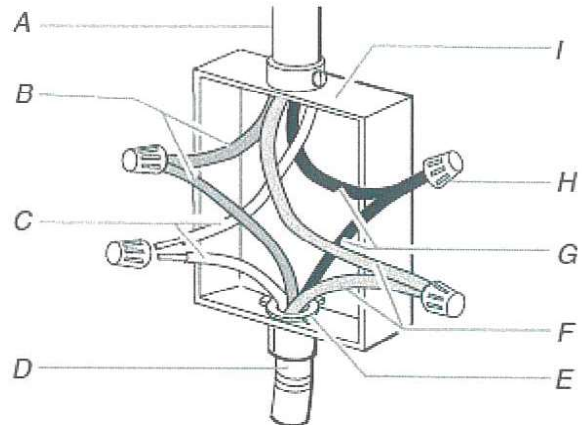


A. UL listed or CSA Approved conduit connector

5. Route the flexible conduit from the oven to the junction box through a UL listed or CSA approved conduit connector.

6. Tighten screws on conduit connector.
7. Complete electrical connection.

4-Wire Cable with Ground from Home Power Supply to Microwave Oven Cable with 4 Wires

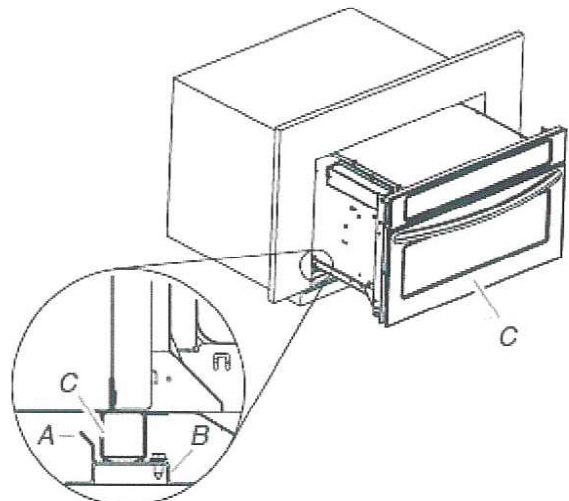


- | | |
|--|-----------------------------|
| A. Cable from home power supply | F. Red wires |
| B. Green (or bare) wires | G. Black wires |
| C. White wires | H. UL listed wire connector |
| D. 4-wire cable from microwave oven | I. Junction box |
| E. UL listed or CSA Approved conduit connector | |

1. Connect the 2 black wires (G) together using a UL listed wire connector.
2. Connect the 2 white wires (C) together using a UL listed wire connector.
3. Connect the 2 red wires (F) together using a UL listed wire connector.
4. Connect the 2 green (or bare) wires (B) together using a UL listed wire connector.
5. Install junction box cover.

Install Microwave Oven

1. Using 2 or more people, lift the microwave oven partially into the cabinet cutout. If a spacer kit has been installed, lift the microwave oven over it and position the microwave oven between the guide strips.



- | |
|----------------------|
| A. Spacer bar flange |
| B. Spacer bar |
| C. Microwave oven |

APR 25 2024

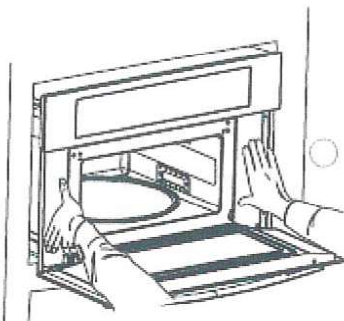
PR2-14

AB

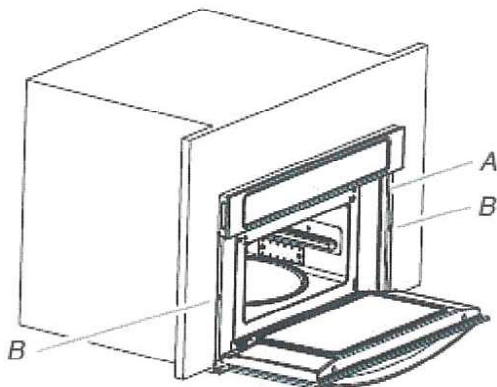
Ry

2. Push against the front frame of the microwave oven to insert oven into cabinet. Push microwave oven completely into cabinet and center in cabinet cutout.

NOTE: Open microwave oven door and push against seal area of microwave oven front frame when pushing microwave oven into cabinet. Do not push against outside edges.



3. Using an 1/8" (3.2 mm) drill bit, predrill pilot holes through the mounting rails on each side of the microwave oven.
4. Securely fasten microwave oven to cabinet using two 3/4" pan-head screws provided. Insert the screws through holes in mounting rails. Do not overtighten screws.



A. Mounting rail
B. Truss-head screws

5. Replace convection grid, turntable, and support hub.
6. Reconnect power.
7. Display panel will light briefly and the clock should appear in the display.
8. If display panel does not light, please reference the "Online Ordering Information" section of the Quick Start Guide or contact the dealer from whom you purchased your microwave oven.

Complete Installation

1. Check that all parts are now installed. If there is an extra part, go back through the steps to see which step was skipped.
2. Check that you have all of your tools.
3. Dispose of/recycle all packaging materials.

Check Operation of Microwave Oven

1. Fill a microwave-safe container with 1 cup (250 mL) of water and place container on the turntable inside the microwave oven. Close door firmly.
2. Touch COOK.
3. Set power level, temperature, and cook time to "2:00" minutes.
4. Press START.

If microwave oven does not operate, check the following:

- Household fuse is intact and tight or circuit breaker has not tripped.
- Electrical supply is connected.
- See the online "Troubleshooting".

When the display reads "1:00" minute, open the microwave oven door. The microwave oven should stop cooking. Close door firmly. The interior microwave oven light should turn off.

5. Touch START to resume a preset cycle. The microwave oven should begin cooking and the microwave oven interior light should be ON.

Let microwave oven complete cooking time. Tones will sound at the end of the cooking time and the microwave oven will shut off.

6. Open microwave oven door and slowly remove container. Water in container should be hot.
7. To set the clock and other microwave oven functions, refer to the Quick Start Guide.

If you need Assistance or Service:

Please reference the "Online Ordering Information" section of the Quick Start Guide or contact the dealer from whom you purchased your built-in microwave oven.

APR 25 2024

AB

RV

PV2-14

ELECTRIC SINGLE AND DOUBLE BUILT-IN OVEN

OWNER'S MANUAL

FOURS ENCASTRÉS SIMPLE ET DOUBLE MANUEL DU PROPRIÉTAIRE

Table of Contents/Table des matières

BUILT-IN OVEN SAFETY	2	SÉCURITÉ DU FOUR ENCASTRÉ	20
Built-In Oven Safety	2	Sécurité du four encastré.....	20
OVEN MAINTENANCE AND CARE	4	ENTRETIEN ET RÉPARATION DU FOUR	22
General Cleaning.....	4	Nettoyage général.....	22
Self-Cleaning Cycle.....	4	Programme d'autonettoyage	22
Steam Clean (on some models)	5	Steam Clean (nettoyage à la vapeur) (sur certains modèles).....	24
INSTALLATION INSTRUCTIONS	6	INSTRUCTIONS D'INSTALLATION	24
REQUIREMENTS	6	EXIGENCE	24
Tools and Parts	6	Outils et pièces.....	24
Location Requirements	6	Exigences d'emplacement	25
Electrical Requirements	11	Spécifications électriques	31
INSTALLATION	11	INSTALLATION	31
Prepare Built-In Oven	11	Préparer le four encastré	31
Remove Oven Door(s)	11	Enlever la/les porte(s) du four	32
Positioning Oven Feet for Multiple Cabinet Cutout Heights.....	12	Positionner les pieds du four pour des ouvertures de découpe dans l'armoire	32
Make Electrical Connection.....	16	Raccordement électrique.....	36
Install Oven	17	Installation du four.....	38
Replace Oven Door(s)	19	Réinstallation de la/des porte(s) du four	39
Complete Installation	19	Achever l'installation.....	40

IMPORTANT:

Save for local electrical inspector's use.

IMPORTANT :

À conserver pour consultation par l'inspecteur local des installations électriques.

W11340513B

APR 25 2024

AB RV
PV2-14

INSTALLATION INSTRUCTIONS

REQUIREMENTS

Tools and Parts

Gather the required tools and parts before starting installation. Read and follow the instructions provided with any tools listed here.

Gather the required tools and parts before starting installation. Read and follow the instructions provided with any tools listed here.

Tools Needed

- Phillips screwdriver
- Measuring tape
- Hand or electric drill (for wall cabinet installations)
- 1" (2.5 cm) drill bit (for wall cabinet installations)
- Level
- Flat-blade screwdriver

Parts Needed

- UL-listed or CSA-approved conduit connector
- UL-listed wire connectors

Parts Supplied

- #8-18 x 3/4" (1.9 cm) screws - single ovens (2), double ovens (4)
- #8-18 x 3/8" (9.5 mm) screws - bottom vent (2)
- #8-18 x 3/8" (9.5 mm) screws - bottom vent shield (2)
- #8-18 x 3/8" (9.5 mm) screws - plastic feet (4)
- Rear feet - double oven (2)
- Front feet - double oven (2)
- Bottom vent shield
- Bottom vent trim

Check local codes. Check existing electrical supply. See the "Electrical Requirements" section.

It is recommended that all electrical connections be made by a licensed, qualified electrical installer.

NOTE: Be sure to purchase only JennAir factory-certified parts and accessories for your appliance. Your installation may require additional parts. To order, refer to the contact information referenced in your Quick Start Guide.

Location Requirements

IMPORTANT: Observe all governing codes and ordinances.

- To eliminate the risk of burns or fire by reaching over heated surface units, cabinet storage space located above the surface units should be avoided. If cabinet storage is to be provided, the risk can be reduced by installing a range hood that projects horizontally a minimum of 5 inches beyond the bottom of the cabinets.
- Cabinet opening dimensions that are shown must be used. Given dimensions provide minimum clearance with oven.
- Recessed installation area must provide complete enclosure around the recessed portion of the oven.
- Grounded electrical supply is required. See "Electrical Requirements" section.

- Electrical supply junction box should be located 3" (7.6 cm) maximum below the support surface when the oven is installed in a wall cabinet. A 1" (2.5 cm) minimum diameter hole should have been drilled in the right rear or left rear corner of the support surface to pass the appliance cable through to the junction box.

NOTE: For undercounter installation, it is recommended that the junction box be located in the adjacent right or left cabinet. If you are installing the junction box on rear wall behind oven, it is recommended that the junction box be recessed and located in the upper center of the cabinet.

- Oven support surface must be solid, level and flush with bottom of cabinet cutout.
- Floor must be able to support a single oven weight of 200 lbs (91 kg) for 30" (76.2 cm) models.
- Floor must be able to support a double oven weight of 330 lbs (150 kg) for 30" (76.2 cm) models.

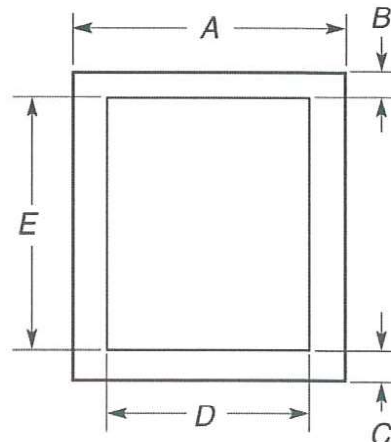
IMPORTANT: To avoid damage to your cabinets, check with your builder or cabinet supplier to make sure that the materials used will not discolor, delaminate or sustain other damage. This oven has been designed in accordance with the requirements of UL and CSA International and complies with the maximum allowable wood cabinet temperatures of 194°F (90°C).

Undercounter Installation (With Cooktop Installed Above):

Ovens approved for this type of installation have an approval label located on the top of the oven. Refer to Cutout Dimensions for Ovens Installed Under Cooktop.

Cabinet Dimensions - Single Ovens, Standard Installation

Single Oven Undercounter (Without Cooktop Installed Above)



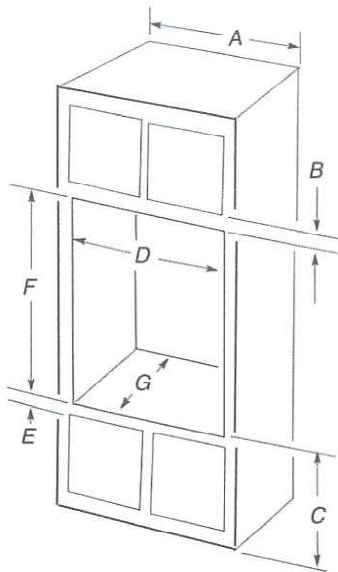
27" (68.6 cm) models

- A. 27" (68.6 cm) minimum cabinet width
- B. 1 1/2" (3.8 cm) minimum top of cutout to underside of countertop
- C. 5 1/4" (13.3 cm) bottom of cutout to floor
- D. 25 1/2" (64.8 cm) minimum cutout width
- E. 28" (71.2 cm) minimum cutout height

30" (76.2 cm) models

- A. 30" (76.2 cm) minimum cabinet width
- B. 1 1/2" (3.8 cm) minimum top of cutout to underside of countertop
- C. 5 1/4" (13.3 cm) bottom of cutout to floor
- D. 28 1/2" (72.4 cm) minimum cutout width
- E. 28" (71.2 cm) minimum cutout height

Single Ovens Installed in Cabinet



27" (68.6 cm) models

- A. 27" (68.6 cm) minimum cabinet width
- B. 2¹/₄" (5.7 cm) top of cutout to bottom of upper cabinet door
- C. 32" (81.3 cm) bottom of cutout to floor
- D. 25¹/₂" (64.8 cm) minimum cutout width
- E. 1¹/₂" (3.8 cm) minimum bottom of cutout to top of cabinet door
- F. 28" (71.2 cm)* recommended cutout height
- G. 24" (60.7 cm) cutout depth

30" (76.2 cm) models

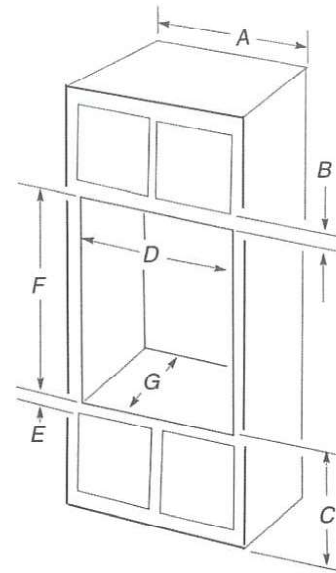
- A. 30" (76.2 cm) minimum cabinet width
- B. 2¹/₄" (5.7 cm) top of cutout to bottom of upper cabinet door
- C. 32" (81.3 cm) bottom of cutout to floor
- D. 28¹/₂" (72.4 cm) minimum cutout width
- E. 1¹/₂" (3.8 cm) minimum bottom of cutout to top of cabinet door
- F. 28" (71.2 cm)* recommended cutout height
- G. 24" (60.7 cm) cutout depth

***NOTE:** The cutout height can be between 26¹⁵/₁₆" and 29⁷/₁₆" (68.4 cm and 74.8 cm) for single ovens.

NOTE: Contact service to get tall bottom vent shield for cutouts taller than 28¹¹/₁₆" (72.9 cm) to enhance installation.

Cabinet Dimensions - Double Ovens, Standard Installation

Double Ovens Installed in Cabinet



27" (68.6 cm) models

- A. 27" (68.6 cm) minimum cabinet width
- B. 2¹/₄" (5.7 cm) top of cutout to bottom of upper cabinet door
- C. 14³/₄" (37.5 cm) bottom of cutout to floor is recommended.
4"-14³/₄" (10.2 cm - 37.5 cm) bottom of cutout to floor is acceptable.
- D. 25¹/₂" (64.8 cm) minimum cutout width
- E. 1¹/₂" (3.8 cm) minimum bottom of cutout to top of cabinet door
- F. 50¹/₄" (127.6 cm)* recommended cutout height
- G. 24" (60.7 cm) cutout depth

30" (76.2 cm) models

- A. 30" (76.2 cm) minimum cabinet width
- B. 2¹/₄" (5.7 cm) top of cutout to bottom of upper cabinet door
- C. 14³/₄" (37.5 cm) bottom of cutout to floor is recommended.
4"-14³/₄" (10.2 cm - 37.5 cm) bottom of cutout to floor is acceptable.
- D. 28¹/₂" (72.4 cm) minimum cutout width
- E. 1¹/₂" (3.8 cm) minimum bottom of cutout to top of cabinet door
- F. 50¹/₄" (127.6 cm)* recommended cutout height
- G. 24" (60.7 cm) cutout depth

***NOTE:** The cutout height can be between 48⁷/₈" and 52³/₁₆" (124.1 cm and 132.6 cm) for double ovens.

NOTE: Contact service to get tall bottom vent shield for cutouts taller than 50³/₈" (128 cm) to enhance installation.

Cabinet Dimensions - Single Ovens, Flush Installations

NOTE: This is an alternate option to install your product in the cabinet and obtain a flush look. For standard installation, refer section "Cabinet Dimensions - Single Ovens, Standard Installation".

A 25" (63.5 cm) minimum cutout depth is required.

These dimensions will result in a 1/4" (6 mm) reveal on the top, a 1/4" (6 mm) reveal on the sides, and a 1/8" (3 mm) reveal on the bottom of the wall oven.

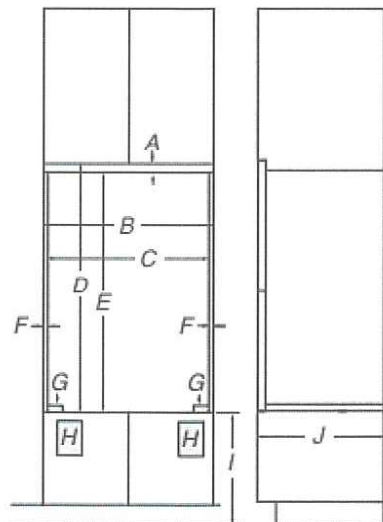
The front face of the cleats and platform will be visible and should be treated as a finished surface.

APR 25 2024

AB RY

PV2-14

Single Ovens Installed in Cabinet



Front View

Side View

27" (68.6 cm) Models

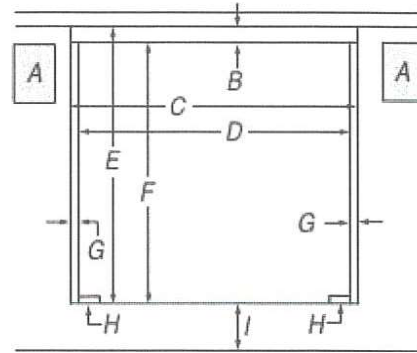
- A. 3/4" (1.9 cm) top cleat*
- B. 27 1/4" (69.2 cm) minimum width of flush inset cutout
- C. 25 7/8" (65.7 cm) minimum width of opening
- D. 29 7/16" (74.8 cm) minimum height of flush inset cutout
- E. 28 1/2" (72.4 cm) recommended cutout height
- F. 11/16" (1.7 cm) side cleat*
- G. 1/4" x 2" (6.4 mm x 5.1 cm) spacer the entire depth of the cutout*
- H. Recommended junction box location
- I. 4 5/8" - 32" (11.7 - 81.3 cm) bottom of cutout to floor
- J. 25" (63.5 cm) minimum depth of cutout

30" (76.2 cm) Models

- A. 3/4" (1.9 cm) top cleat*
- B. 30 1/4" (76.8 cm) minimum width of flush inset cutout
- C. 28 7/8" (73.3 cm) minimum width of opening
- D. 29 7/16" (74.8 cm) minimum height of flush inset cutout
- E. 28 1/2" (72.4 cm) recommended cutout height
- F. 11/16" (1.7 cm) side cleat*
- G. 1/4" x 2" (6.4 mm x 5.1 cm) spacer the entire depth of the cutout*
- H. Recommended junction box location
- I. 4 5/8" - 32" (11.7 - 81.3 cm) bottom of cutout to floor
- J. 25" (63.5 cm) minimum depth of cutout

* Cleats and spacers must be recessed 1 3/8" (3.5 cm) from the front of the cabinet.

Single Ovens Undercounter - without cooktop installed above



Front View

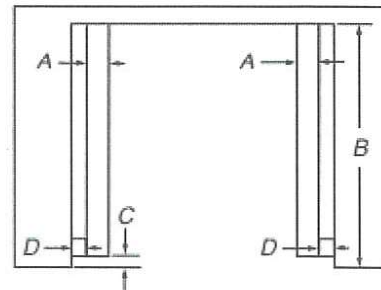
27" (68.6 cm) Models

- A. Recommended junction box location
- B. 3/4" (1.9 cm) top cleat*
- C. 27 1/4" (69.2 cm) minimum width of flush inset cutout
- D. 25 7/8" (65.7 cm) minimum width of opening
- E. 29 1/4" (74.3 cm) minimum height of flush inset cutout
- F. 28 1/2" (72.4 cm) recommended cutout height
- G. 11/16" (1.7 cm) side cleat*
- H. 1/4" x 2" (6.4 mm x 5.1 cm) spacer the entire depth of the cabinet*
- I. 4 5/8" (11.7 cm) bottom of cutout to floor

30" (76.2 cm) Models

- A. Recommended junction box location
- B. 3/4" (1.9 cm) top cleat*
- C. 30 1/4" (76.8 cm) minimum width of flush inset cutout
- D. 28 7/8" (73.3 cm) minimum width of opening
- E. 29 1/4" (74.3 cm) minimum height of flush inset cutout
- F. 28 1/2" (72.4 cm) recommended cutout height
- G. 11/16" (1.7 cm) side cleat*
- H. 1/4" x 2" (6.4 mm x 5.1 cm) spacer the entire depth of the cabinet*
- I. 4 5/8" (11.7 cm) bottom of cutout to floor

* Cleats and spacers must be recessed 1 3/8" (3.5 cm) from the front of the cabinet.



Top View

27" (68.6 cm) Models

- A. 1/4" x 2" (0.64 cm x 5.1 cm) spacer the entire depth of the cutout*
- B. 25" (63.5 cm) depth of cutout
- C. 1 3/8" (3.5 cm) recess from front of cabinet
- D. 11/16" (1.7 cm) side cleat*

30" (76.2 cm) Models

- A. 1/4" x 2" (0.64 cm x 5.1 cm) spacer the entire depth of the cutout*
- B. 25" (63.5 cm) depth of cutout
- C. 1 3/8" (3.5 cm) recess from front of cabinet
- D. 11/16" (1.7 cm) side cleat*

* Cleats and spacers must be recessed 1 3/8" (3.5 cm) from the front of the cabinet.

APR 25 2024

PV2-14

AB

Ry

Cabinet Dimensions - Double Ovens, Flush Installations

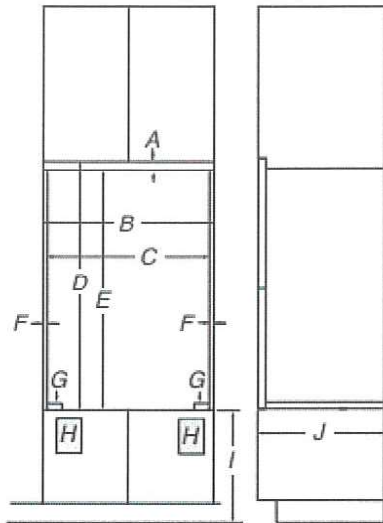
NOTE: This is an alternate option to install your product in the cabinet and obtain a flush look. For standard installation, refer section "Cabinet Dimensions - Double Ovens, Standard Installation".

A $25\frac{3}{8}$ " (64.4 cm) minimum cutout depth is required.

These dimensions will result in a $\frac{1}{4}$ " (6 mm) reveal on the top, a $\frac{1}{4}$ " (6 mm) reveal on the sides, and a $\frac{1}{8}$ " (3 mm) reveal on the bottom of the wall oven.

The front face of the cleats and platform will be visible and should be treated as a finished surface.

Double Ovens Installed in Cabinet



Front View

Side View

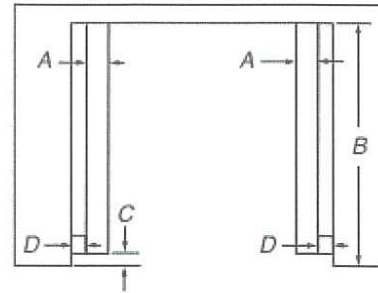
27" (76.2 cm) Models

- A. $9\frac{1}{16}$ " (1.4 cm) top cleat*
- B. $27\frac{1}{4}$ " (69.2 cm) minimum width of flush inset cutout
- C. $25\frac{7}{8}$ " (65.7 cm) minimum width of opening
- D. $52\frac{3}{16}$ " (132.6 cm) minimum height of flush inset cutout
- E. $51\frac{7}{16}$ " (130.6 cm) recommended cutout height
- F. $11\frac{1}{16}$ " (1.7 cm) side cleat*
- G. $\frac{1}{4}$ " x 2" (0.64 cm x 5.1 cm) spacer the entire depth of the cutout*
- H. Recommended junction box location
- I. $4\frac{5}{8}$ " - $14\frac{3}{4}$ " (11.7 - 37.5 cm) bottom of cutout to floor
- J. $25\frac{3}{8}$ " (64.4 cm) minimum depth of cutout

30" (76.2 cm) Models

- A. $9\frac{1}{16}$ " (1.4 cm) top cleat*
- B. $30\frac{1}{4}$ " (76.8 cm) minimum width of flush inset cutout
- C. $28\frac{7}{8}$ " (73.3 cm) minimum width of opening
- D. $52\frac{3}{16}$ " (132.6 cm) minimum height of flush inset cutout
- E. $51\frac{7}{16}$ " (130.6 cm) recommended cutout height
- F. $11\frac{1}{16}$ " (1.7 cm) side cleat*
- G. $\frac{1}{4}$ " x 2" (0.64 cm x 5.1 cm) spacer the entire depth of the cutout*
- H. Recommended junction box location
- I. $4\frac{5}{8}$ " - 32" (11.7 - 81.3 cm) bottom of cutout to floor
- J. $25\frac{3}{8}$ " (64.4 cm) minimum depth of cutout

* Cleats and spacers must be recessed $1\frac{3}{8}$ " (3.5 cm) from the front of the cabinet.



Top View

27" (68.6 cm) Models

- A. $\frac{1}{4}$ " x 2" (0.64 cm x 5.1 cm) spacer the entire depth of the cutout*
- B. $25\frac{3}{8}$ " (64.4 cm) depth of cutout
- C. $1\frac{3}{8}$ " (3.5 cm) recess from front of cabinet
- D. $11\frac{1}{16}$ " (1.7 cm) side cleat*

30" (76.2 cm) Models

- A. $\frac{1}{4}$ " x 2" (0.64 cm x 5.1 cm) spacer the entire depth of the cutout*
- B. $25\frac{3}{8}$ " (64.4 cm) depth of cutout
- C. $1\frac{3}{8}$ " (3.5 cm) recess from front of cabinet
- D. $11\frac{1}{16}$ " (1.7 cm) side cleat*

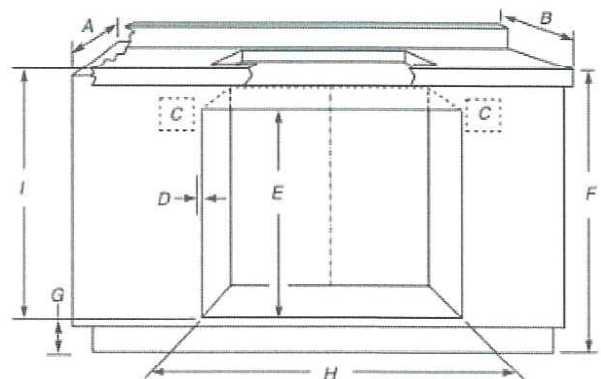
* Cleats and spacers must be recessed $1\frac{3}{8}$ " (3.5 cm) from the front of the cabinet.

Cutout Dimensions For Ovens Installed Under Cooktop

IMPORTANT: Observe all governing codes and ordinances. Cooktop must be approved for use over an oven. See cooktop Installation Instructions for cutout dimensions. Center the cooktop cutout over oven cutout.

To avoid damage to your cabinets, check with your builder or cabinet supplier to make sure that the materials used will not discolor, delaminate or sustain other damage. This oven has been designed in accordance with UL and CSA International and complies with the maximum allowable wood cabinet temperatures of 194°F (90°C).

Approved Built-In Oven and Electric Radiant/Coil Cooktop Combinations



- A. 24" (61 cm) cabinet depth
- B. 25" (63.5 cm) countertop depth
- C. Recommended oven and cooktop junction box locations
- D. Allow $5\frac{5}{8}$ " (1.6 cm) for oven trim to overlap on each side.
- E. $27\frac{3}{4}$ " (70.5 cm) minimum cutout height
- F. 36" (91.4 cm) from cabinet base to countertop
- G. $4\frac{5}{8}$ " (11.7 cm) maximum from cabinet base
- H. See Cutout Dimensions chart.
- I. $31\frac{3}{8}$ " (79.7 cm) from top of countertop to bottom of cutout

APR 25 2024

PR2-14

AB

Ry

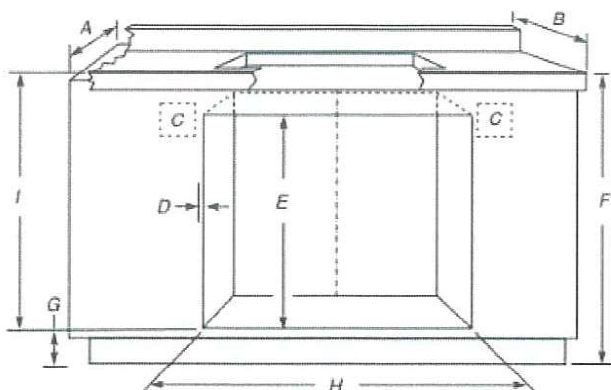
CUTOUT DIMENSIONS (H)

Oven Size	Oven Cutout Dimension
24" (61 cm)	22 ¹ / ₂ " (57.2 cm)
27" (68.6 cm)	25 ¹ / ₂ " (64.8 cm)
30" (76.2 cm)	28 ¹ / ₂ " (72.4 cm)
36" (91.4 cm)	34 ¹ / ₂ " (87.6 cm)

For the approved model number combinations, refer to the undercounter label located on top of the oven chassis and on the bottom of the cooktop burner box.

NOTE: For undercounter installation, it is recommended that the junction boxes for oven and cooktop be located in the adjacent right or left cabinet. A 1" (2.5 cm) minimum diameter hole should have been drilled in the upper rear right or left corner of the side wall surface to pass the appliance cable through to the junction box.

Approved Built-In Oven and Induction Cooktop Combinations



- A. 24" (61 cm) cabinet depth
- B. 25" (63.5 cm) countertop depth
- C. Recommended oven and cooktop junction box locations
- D. Allow 5/8" (1.6 cm) for oven trim to overlap on each side.
- E. 27³/₄" (70.5 cm) minimum cutout height
- F. 36" (91.4 cm) from cabinet base to countertop
- G. 4⁵/₈" (11.7 cm) maximum from cabinet base. If dimension "F" is greater than 36" (91.4 cm), dimension "G" can be increased the same difference for induction combinations.
- H. See Cutout Dimensions chart.
- I. 31³/₈" (82.2 cm) from top of countertop to bottom of cutout

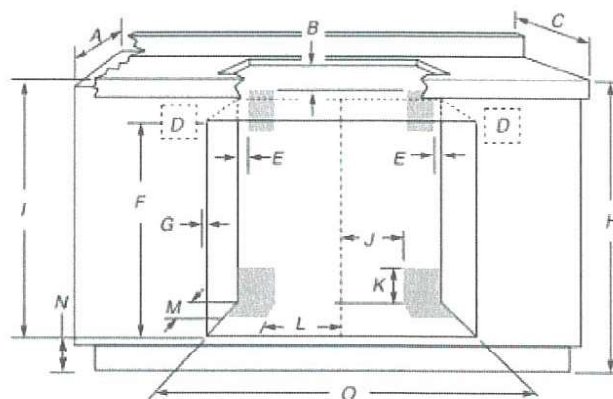
CUTOUT DIMENSIONS (H)

Oven Size	Minimum Oven Cutout Dimension
24" (61 cm)	22 ¹ / ₂ " (57.2 cm)
27" (68.6 cm)	25 ¹ / ₂ " (64.8 cm)
30" (76.2 cm)	28 ¹ / ₂ " (72.4 cm)

For the approved model number combinations, refer to the undercounter label located on top of the oven chassis and on the bottom of the cooktop burner box.

NOTE: For undercounter installation, it is recommended that the junction boxes for oven and cooktop be located in the adjacent right or left cabinet. A 1" (2.5 cm) minimum diameter hole should have been drilled in the upper rear right or left corner of the side wall surface to pass the appliance cable through to the junction box.

Approved Built-In Oven and Gas Cooktop Combinations



- A. 24" (61 cm) cabinet depth
- B. 1" (2.5 cm) clearance to bottom of countertop
- C. 25" (63.5 cm) countertop depth
- D. Recommended oven junction box locations.
- E. 1" (2.5 cm) clearance to cabinet
- F. 27³/₄" (70.5 cm) minimum cutout height
- G. Allow 5/8" (1.6 cm) for oven trim to overlap on each side.
- H. 36" (91.4 cm) from cabinet base to countertop
- I. 31³/₈" (79.7 cm) from top of countertop to bottom of cutout
- J. Gas line through wall 10¹/₂" (26.7 cm) to center of cutout
- K. 3¹/₄" (8.3 cm)
- L. Gas line through floor 10¹/₂" (26.7 cm) to center of cutout
- M. 3¹/₂" (8.9 cm)
- N. 4⁵/₈" (11.7 cm) maximum from cabinet base
- O. See Cutout Dimensions chart.

CUTOUT DIMENSIONS (O)

Oven Size	Minimum Oven Cutout Dimension
24" (61 cm)	22 ¹ / ₂ " (57.2 cm)
27" (68.6 cm)	25 ¹ / ₂ " (64.8 cm)
30" (76.2 cm)	28 ¹ / ₂ " (72.4 cm)
36" (91.4 cm)	34 ¹ / ₂ " (87.6 cm)

For the approved model number combinations, refer to the undercounter label located on top of the oven chassis.

NOTE: For undercounter installation, it is recommended that the junction box for oven be located in the adjacent right or left cabinet. A 1" (2.5 cm) minimum diameter hole should have been drilled in the upper rear right or left corner of the side wall surface to pass the appliance cable through to the junction box.

The upper shaded areas are recommended locations for recessed junction box for 120 V grounded outlet for cooktop.

Lower shaded areas are recommended locations for flexible or rigid gas pipe installation. The gas connection on the cooktop is on the right (same location as "J" in the above diagram). The gas pipe can be installed on either side of the cutout, and either through the floor or through the wall. Refer to local codes regarding the use of gas lines.

APR 25 2024

PV2-14

AB RY

Electrical Requirements

If codes permit and a separate ground wire is used, it is recommended that a qualified electrical installer determine that the ground path and the wire gauge are in accordance with local codes.

Check with a qualified electrical installer if you are not sure the oven is properly grounded.

This oven must be connected to a grounded metal, permanent wiring system.

Be sure that the electrical connection and wire size are adequate and in conformance with the National Electrical Code, ANSI/NFPA 70-latest edition or CSA Standards C22.1-94, Canadian Electrical Code, Part 1 and C22.2 No. O-M91-latest edition, and all local codes and ordinances.

A copy of the above code standards can be obtained from:

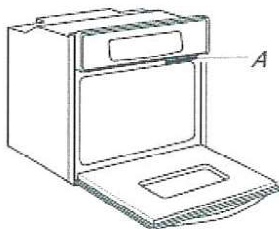
National Fire Protection Association
1 Batterymarch Park
Quincy, MA 02169-7471

CSA International
8501 East Pleasant Valley Road
Cleveland, OH 44131-5575

Electrical Connection

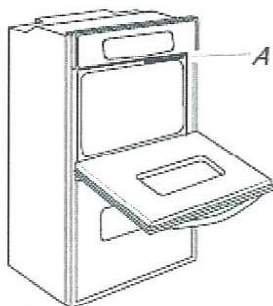
To properly install your oven, you must determine the type of electrical connection you will be using and follow the instructions provided for it here.

- Oven must be connected to the proper electrical voltage and frequency as specified on the model/serial/rating plate. The model/serial/rating plate is located under the control panel on single ovens and under the control panel on the upper oven cavity on double ovens. See the following illustrations.



Single oven

A. Model/serial/rating plate



Double oven

A. Model/serial/rating plate

- Models rated from 7.3 to 9.6 kW at 240 V (5.4 to 7.4 kW at 208 V) require a separate 40 A circuit. Models rated at 4.8 kW and below at 240 V (3.6 kW and below at 208 V) require a separate 20 A circuit.
- A circuit breaker is recommended.
- Connect directly to the fused disconnect (or circuit breaker box) through flexible, armored, or nonmetallic sheathed, copper cable (with grounding wire). See "Make Electrical Connection" section.
- Flexible conduit from the oven should be connected directly to the junction box.
- Fuse both sides of the line.
- Do not cut the conduit. The length of conduit provided is for serviceability of the oven.
- A UL-listed or CSA-approved conduit connector must be provided.

- If the house has aluminum wiring, follow the procedure below:
Connect the aluminum wiring using special connectors and/or tools designed and UL listed for joining copper to aluminum.
Follow the electrical connector manufacturer's recommended procedure. Aluminum/copper connection must conform with local codes and industry-accepted wiring practices.

INSTALLATION

Prepare Built-In Oven

1. Decide on the final location for the oven. Avoid drilling or cutting into house wiring during installation.

⚠ WARNING

Excessive Weight Hazard

Use two or more people to move and install or uninstall appliance.

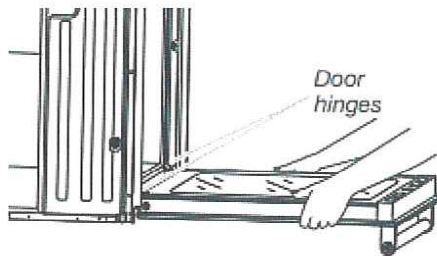
Failure to do so can result in back or other injury.

2. To avoid floor damage, set the oven onto cardboard prior to installation. Do not use handle or any portion of the front frame for lifting.
3. Remove the shipping materials and tape from the oven. Remember to keep the corner posts and other materials that may be needed for installation.
4. Remove the hardware package from inside the bag containing literature.
5. Remove and set aside racks, attachments, and other parts from inside the oven.
6. Move oven and cardboard close to the oven's final location.

Remove Oven Door(s)

IMPORTANT: Use 2 hands to remove oven door. For double ovens, repeat the process for each door.

1. Prior to removing the oven door, prepare a surface where you will place it. This surface should be flat and covered with a soft blanket, or use the corner posts from your packaging material.
2. Fully open the oven door.



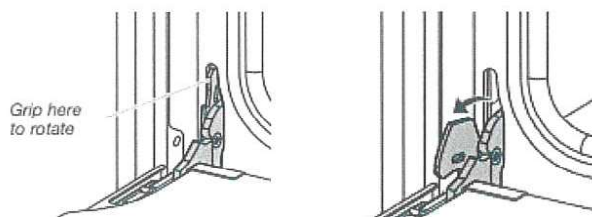
APR 25 2024

PV2-14

AB

RY

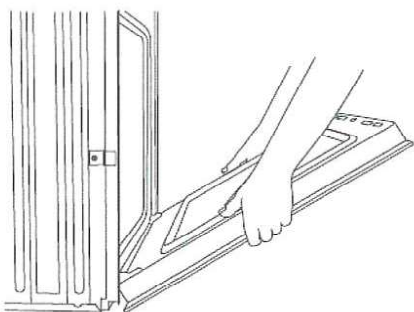
3. Locate the oven door hinge locks in both corners of the oven door, and rotate the hinge locks toward the oven door to the unlocked position. If the door hinge lock is not rotated fully (see illustration B), the door will not remove properly.



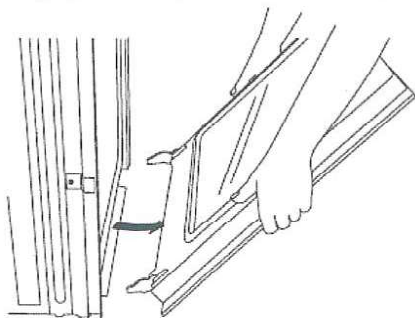
A. Oven door hinge lock in locked position

B. Oven door hinge lock in unlocked position

4. Gently start to close the door. The door will stop at a partially closed position.



5. Using 2 hands, grasp the edges of the oven door. Close the oven door slightly past the stop position to take the weight off of the door hinges, and then pull the oven door up.



6. Pull the oven door toward you, and then remove. You may need to gently shift door from side to side as you pull.
7. Set the oven door aside on the prepared covered work surface with the oven door resting on its handle.
8. To continue with the oven installation, go to the "Positioning Oven Feet for Multiple Cabinet Cutout Heights" section.

Positioning Oven Feet for Multiple Cabinet Cutout Heights

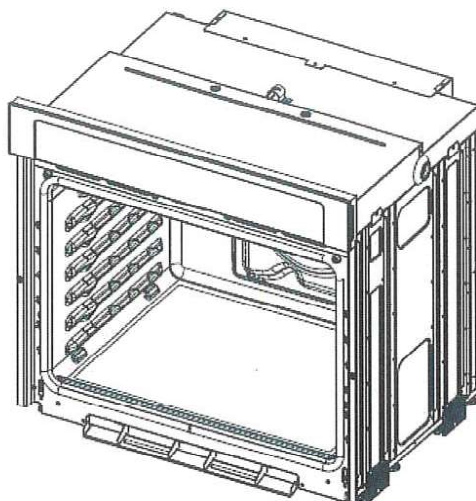
Single Ovens

The positioning of the oven feet allow a single oven to be installed in a cutout height between $26\frac{15}{16}$ " and $29\frac{7}{16}$ " (68.4 cm and 74.8 cm). Refer to the following instructions to position the feet for the size of your cabinet cutout.

Cutout Height is Between $27\frac{5}{8}$ " and $28\frac{5}{8}$ " (70.2 cm and 72.7 cm)

The oven feet do not need to be changed. They are positioned correctly as received.

Go to the "Make Electrical Connection" section.



APR 25 2024

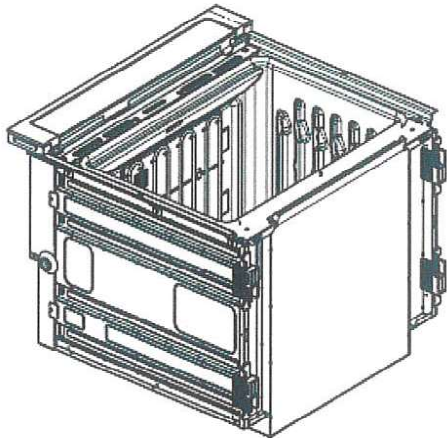
PR2-1A

AB

R4

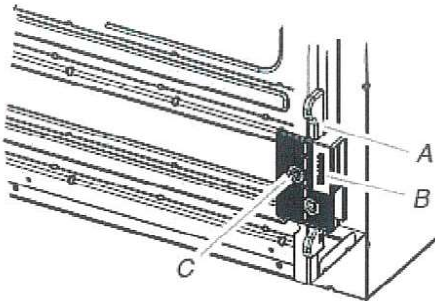
Cutout Height is Between $26\frac{15}{16}$ " and $27\frac{11}{16}$ " (68.4 cm and 70.3 cm)

- Using 2 or more people, place the oven on its back on a covered surface.



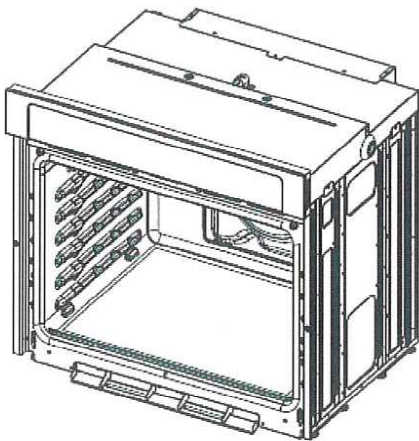
- Remove the foot from the right front spacer by removing the #8-18 x 3/8" screw.

NOTE: Do not remove the spacer.



- A. Spacer
- B. Foot
- C. #8-18 x 3/8" (9.5 mm) screw

- In the same manner, remove the feet on the right rear, left front, and left rear of the oven.
- Using 2 or more people, place the oven in its upright position.

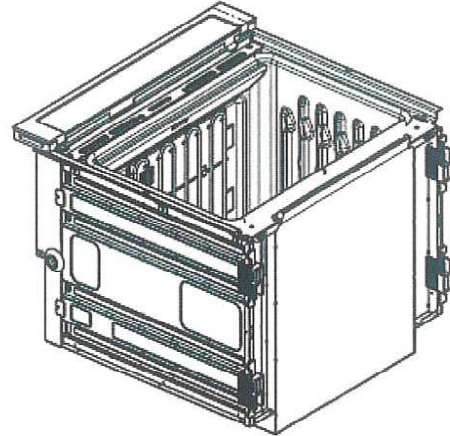


- Go to the "Make Electrical Connection" section.

Cutout Height is between $28\frac{11}{16}$ " and $29\frac{7}{16}$ " (72.8 cm and 74.8 cm)

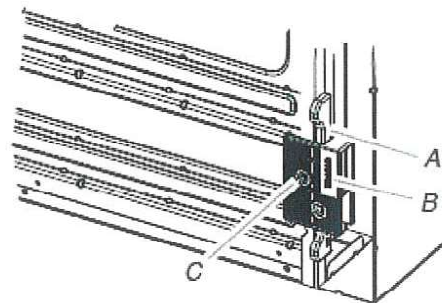
NOTE: A tall bottom vent shield can be ordered to replace the shield that came with the unit as an optional bottom aesthetic. The oven will function properly with either shield. Please refer to your Quick Start Guide for the service number to call and request at no charge.

- Using 2 or more people, place the oven on its back on a covered surface.



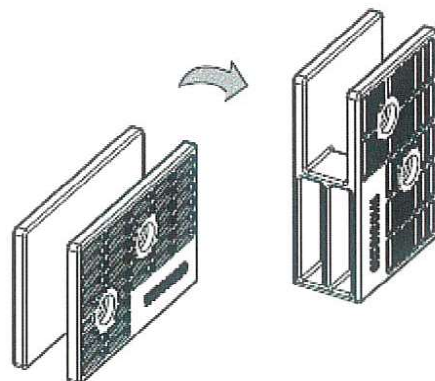
- Remove the foot from the right front spacer by removing the #8-18 x 3/8" (9.5 mm) screw.

NOTE: Do not remove the spacer.



- A. Spacer
- B. Foot
- C. #8-18 x 3/8" (9.5 mm) screw

- Rotate the foot 90° so the short side of the foot is positioned toward the top of the oven.



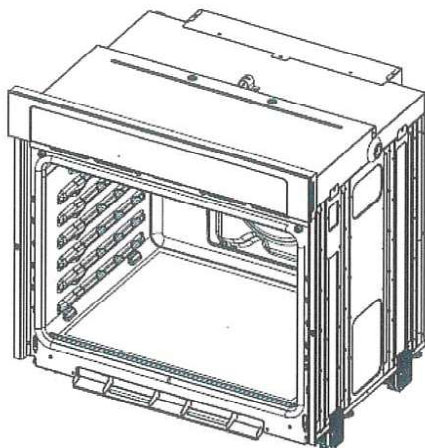
- Reinstall the foot to the spacer using the #8-18 x 3/8" (9.5 mm) screw previously removed.

APR 25 2024

AB

PR2-14
13
RY

5. In the same manner, remove, rotate and reinstall the feet on the right rear, left front, and left rear of the oven.
6. Using 2 or more people, place the oven in its upright position.



7. Go to the "Make Electrical Connection" section.

Double Ovens

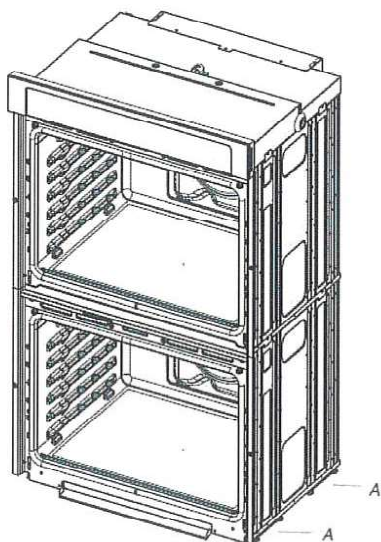
The positioning of the oven feet allow a double oven to be installed in a cutout height between $48\frac{7}{8}$ " and $52\frac{3}{16}$ " (124.1 cm and 132.6 cm). Refer to the following instructions to position the feet for the size of your cabinet cutout.

Cutout Height is Between $48\frac{7}{8}$ " and $50\frac{7}{16}$ " (124.1 cm and 128.1 cm)

The oven feet do not need to be installed. The oven is configured correctly as received.

NOTE: Do not remove the spacers.

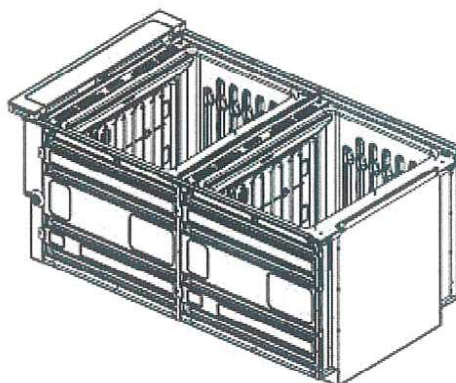
Go to the "Make Electrical Connection" section.



A. Spacers

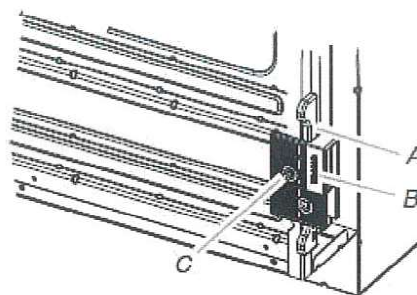
Cutout Height is Between $50\frac{1}{2}$ " and $51\frac{1}{8}$ " (128.2 cm and 129.9 cm) or For Flush Installation

1. Using 2 or more people, place the oven on its back on a covered surface.



2. Install a rear foot on the left rear spacer using a #8-18 x $\frac{3}{8}$ " (9.5 mm) screw.

NOTE: Position the foot so the long side of the foot is facing toward the top of the oven.



- A. Spacer
- B. Rear foot
- C. #8-18 x $\frac{3}{8}$ " (9.5 mm) screw

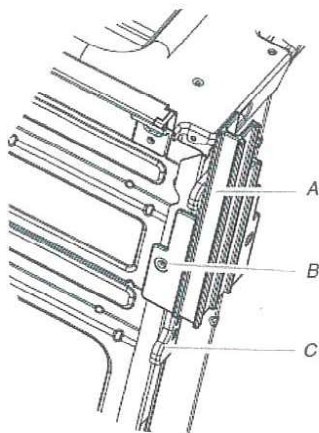
3. In the same manner, install a rear foot on the right rear of the oven.

APR 25 2024

AB Ry
PV2-14

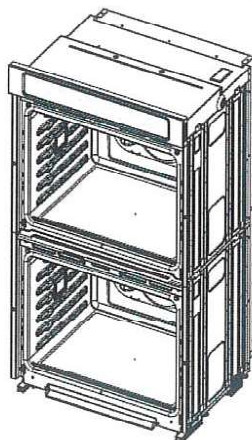
4. Install a front foot on the left front spacer using a #8-18 x 3/8" (9.5 mm) screw.

NOTE: Position the foot so the long side of the foot is facing toward the inside of the oven.



A. Front Foot
B. #8-18 x 3/8" (9.5 mm) screw
C. Spacer

5. In the same manner, install a front foot on the right front of the oven.
6. Using 2 or more people, place the oven in its upright position.

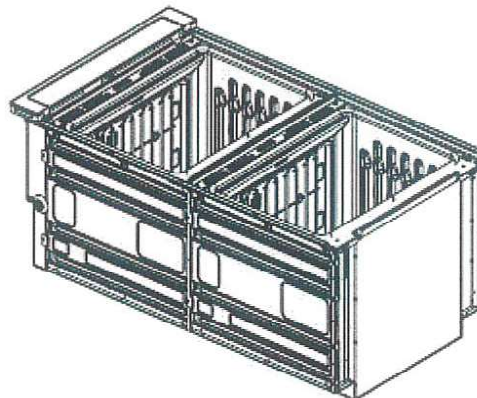


7. Go to the "Make Electrical Connection" section.

Cutout Height is Between 51³/₁₆" and 52³/₁₆" (130.0 cm and 132.6 cm)

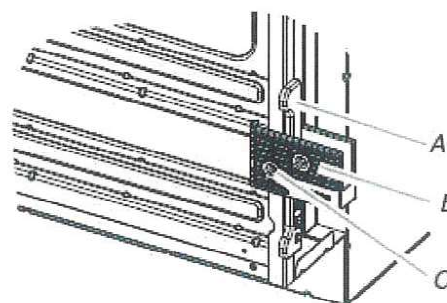
NOTE: A tall bottom vent shield can be ordered to replace the shield that came with the unit as an optional bottom aesthetic. The oven will function properly with either shield. Please refer to your Quick Start Guide for the service number to call and request at no charge.

1. Using 2 or more people, place the oven on its back on a covered surface.



2. Install a rear foot on the left rear spacer using a #8-18 x 3/8" (9.5 mm) screw.

NOTE: Position the rear foot so the short side of the foot is facing toward the top of the oven.



A. Spacer
B. Rear foot
C. #8-18 x 3/8" (9.5 mm) screw

3. In the same manner, install a rear foot on the right rear of the oven.

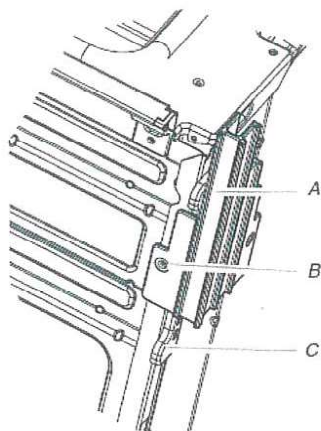
APR 25 2024

AB RY

PR2-14

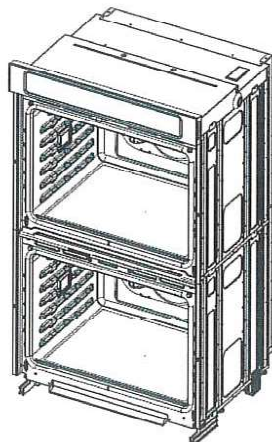
4. Install a front foot on the left front using a #8-18 x 3/8" (9.5 mm) screw.

NOTE: Position the foot so the short side of the foot is facing toward the top of the oven.



A. Front Foot
B. #8-18 x 3/8" (9.5 mm) screw
C. Spacer

5. In the same manner, install a front foot on the right front of the oven.
6. Using 2 or more people, place the oven in its upright position.



7. Go to the "Make Electrical Connection" section.

Make Electrical Connection For Single Ovens

⚠ WARNING



Electrical Shock Hazard

Disconnect power before servicing.

Use 12 gauge copper wire.

Electrically ground oven.

Failure to follow these instructions can result in death, fire, or electrical shock.

For Double Ovens

⚠ WARNING



Electrical Shock Hazard

Disconnect power before servicing.

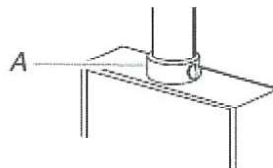
Use 8 gauge copper wire.

Electrically ground oven.

Failure to follow these instructions can result in death, fire, or electrical shock.

This oven is manufactured with a neutral (white) power supply wire and a cabinet-connected green (or bare) ground wire twisted together.

1. Disconnect power.
2. Feed the flexible conduit from the oven through the opening in the cabinet.
3. Remove junction box cover, if it is present.
4. Install a UL listed or CSA approved conduit connector to the junction box.



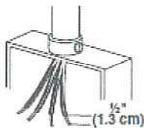

A. UL listed or CSA Approved conduit connector

5. Route the flexible conduit from the oven to the junction box through a UL listed or CSA approved conduit connector.
6. Tighten screws on conduit connector.
7. See "Electrical Connection Options Chart" to complete installation for your type of electrical connection.

APR 25 2024

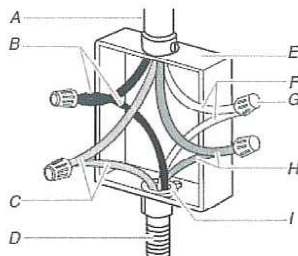
AB RV
PV2-14

Electrical Connection Options Chart

If your home has:	Go to section:
4-wire 	4-Wire Cable from Home Power Supply
3-wire 	3-Wire Cable from Home Power Supply

4-Wire Cable from Home Power Supply

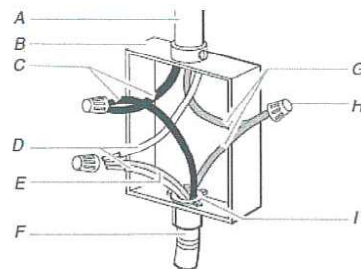
IMPORTANT: Use the 4-wire cable from home power supply in the U.S. where local codes do not allow grounding through neutral, New Branch circuit installations (1996 NEC), mobile homes and recreational vehicles, new construction and in Canada.



- | | |
|--------------------------------------|--|
| A. Cable from home power supply | F. White wires |
| B. Black wires | G. UL listed wire connectors |
| C. Red wires | H. Green (or bare) ground wires |
| D. 4-wire flexible conduit from oven | I. UL listed or CSA approved conduit connector |
| E. Junction box | |
1. Connect the 2 black wires (B) together using a UL listed wire connector.
 2. Connect the 2 red wires (C) together using a UL listed wire connector.
 3. Untwist white wire from green (or bare) ground wire coming from the oven.
 4. Connect the 2 white wires (F) together using a UL listed wire connector.
 5. Connect the green (or bare) ground wire (H) from the oven cable to the green (or bare) ground wire (in the junction box) using a UL listed wire connector.
 6. Install junction box cover.

3-Wire Cable from Home Power Supply – U.S. Only

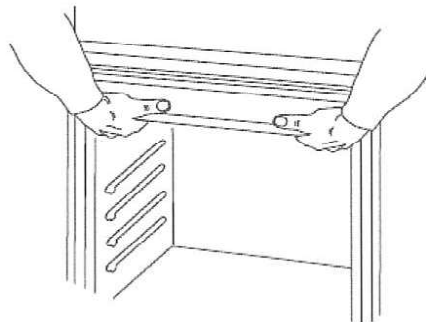
IMPORTANT: Use the 3-wire cable from home power supply where local codes permit a 3-wire connection.



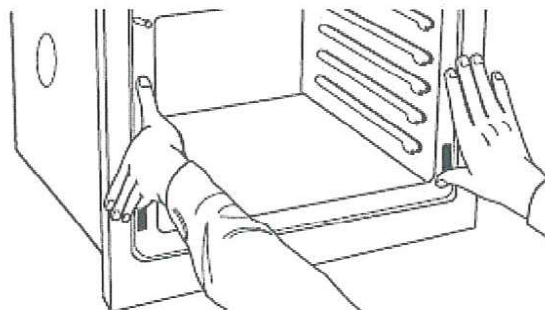
- | | |
|--|--|
| A. Cable from home power supply | F. 4-wire flexible conduit from oven |
| B. Junction box | G. Red wires |
| C. Black wires | H. UL listed wire connectors |
| D. White wires | I. UL listed or CSA approved conduit connector |
| E. Green (or bare) ground wire (from oven) | |
1. Connect the 2 black wires (C) together using a UL listed wire connector.
 2. Connect the 2 white wires (D) and the green (or bare) ground wire (of the oven cable) using a UL listed wire connector.
 3. Connect the 2 red wires (G) together using a UL listed wire connector.
 4. Install junction box cover.

Install Oven

1. Using 2 or more people, lift the oven partially into the cabinet cutout. Use the oven opening as an area to grip.
NOTE: Push against seal area of the oven front frame when pushing the oven into the cabinet. Do not push against the outside edges.



2. Push against the seal area of the front frame to push the oven into the cabinet until the back surface of the front frame touches the front wall of the cabinet.



3. Push oven completely into the cabinet and center the oven into the cabinet cutout.

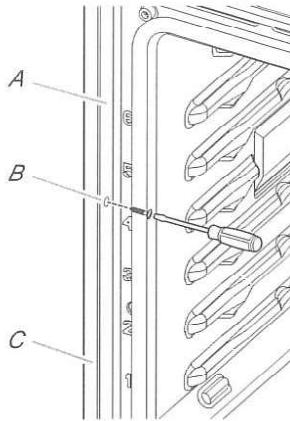
APR 25 2024

17

AB RY PV 2-14

4. Securely fasten the oven to the cabinet using the #8-14 x 3/4" (1.9 cm) screws provided.

Insert the screws through hole in black trim aligning with hole in oven frame. Do not overtighten screws.

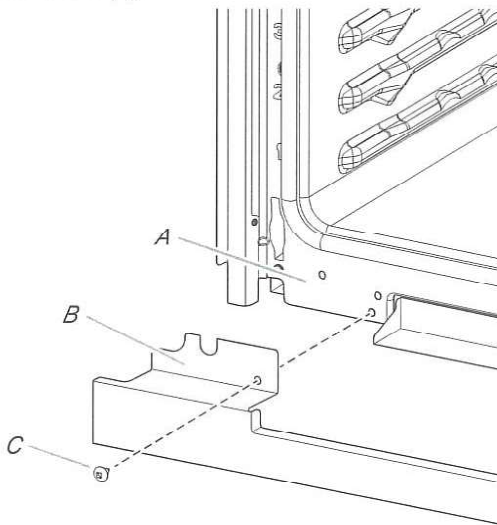


A. Oven frame
B. Side trim hole
C. Side trim piece

5. The bottom vent trim and bottom vent shield are shipped in the foam packing at the top of the oven.

Tall bottom vent shield are used when the oven is installed with the feet in the tall position. Please contact service for one to be shipped to you free of charge.

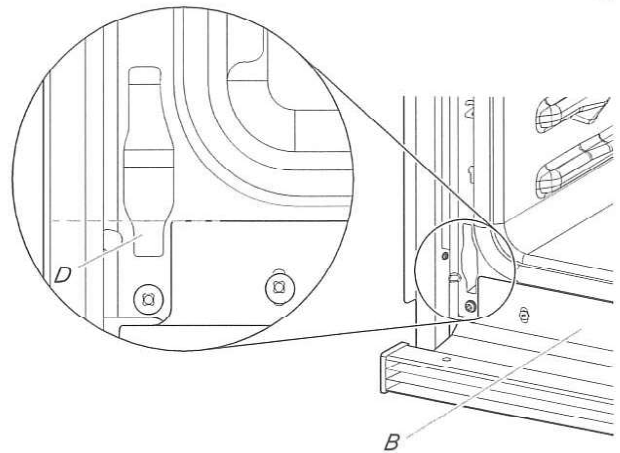
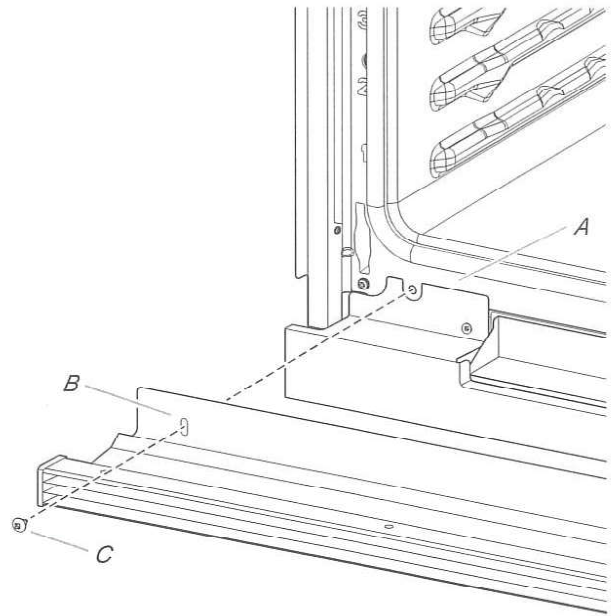
- Align bottom vent shield tab (B) with oven frame (A) as shown.
- Using one #8-18 x 3/8" (9.5 mm) screw (C) on each side of the bottom vent shield tab (B), fasten the vent securely to the oven frame (A).



A. Oven frame
B. Bottom vent shield tab
C. #8-18 x 3/8" (9.5 mm) screws

6. After the bottom vent shield is installed.

- Align the bottom vent trim tab (B) with the oven frame (A) as shown.
- Using one #8-18 x 3/8" (9.5 mm) screw (C) on each side of the bottom vent trim tab (B), align the top of the bottom vent trim tab (B) to the Hinge receiver (D) as shown.
- Fasten the bottom vent trim securely to the oven frame (A).

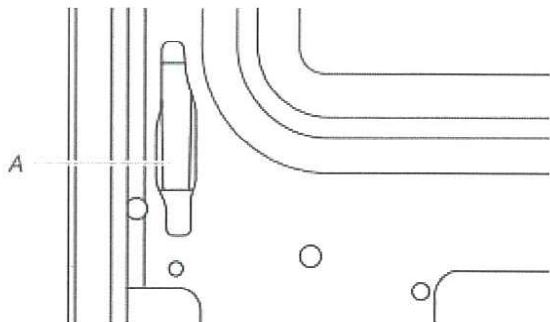


A. Oven frame
B. Bottom vent trim tab
C. #8-18 x 3/8" (9.5 mm) screw
D. Hinge receiver

7. Replace the oven racks.
8. Replace the oven door. See the "Replace Oven Door(s)" section.
9. Check that the door is free to open and close. If it is not, repeat the removal and installation procedures. See the "Prepare Built-In Oven" section.
10. Repeat for lower oven door.
IMPORTANT: For proper oven operation, check that the gap between bottom of the door and bottom vent trim is at least 1/4" (6.4 mm).
11. Reconnect power.
12. The display panel will light and boot up.
13. If the display panel does not light, reference the Warranty.

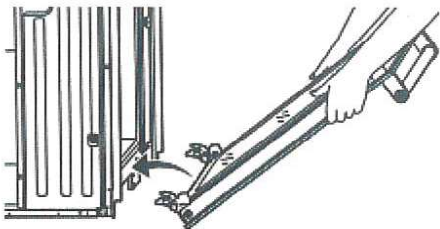
Replace Oven Door(s)

1. Using two hands, grasp side edges of door at the midpoint. Face the oven cavity.
2. Locate the slots on each side of the oven cavity for the door hinge locks.

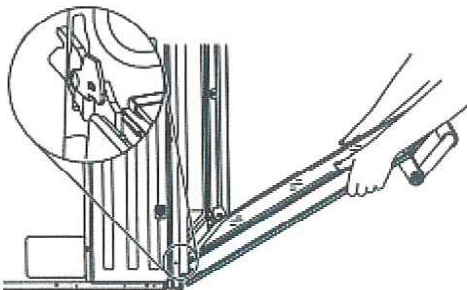


A. Slot in the oven cavity for door hinge lock

3. Using 2 hands, grasp the edges of the oven door. At a 45° angle, insert the hinges at the same time, and push the oven door into the oven cavity slot to replace. You may need to gently shift the door from side to side as you push.



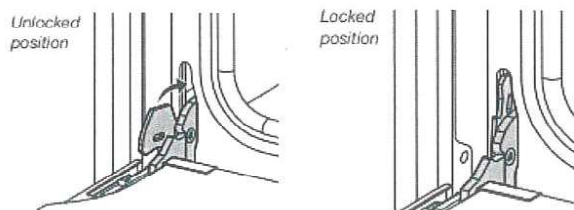
4. Make sure the door hinge notch is engaged on the bottom of the oven cavity slot.



IMPORTANT: Do not close the door at this step or damage may occur to the door hinge.

5. Lower the oven door to the fully open position. If the oven door does not open to a full 90°, repeat steps 1 through 3.

6. Locate the oven door hinge locks in the corners of the oven door, and rotate the hinge locks toward the oven cavity to the locked position.



7. After the door hinges have been locked, gently swing the door upward to close. The door should not be forced closed.
8. When the hinges are properly installed and the door is closed, there should be an even gap between the door and the control panel. If one side of the oven door is lower than the other, the hinge on that side is not properly installed.

Complete Installation

1. Check that all parts are now installed. If there is an extra part, go back through the steps to see which step was skipped.
2. Check that you have all of your tools.
3. Dispose of/recycle all packaging materials.
4. For oven cleaning, read the "Oven Maintenance and Care" section.

Check Operation of Single and Double Ovens

1. Turn on power.
2. At first use, set up the languages, clock, and any other preferences, if available. For more information, read the online "Control Guide".
3. Start a broil cycle.

NOTE: Odors and smoke are normal when the oven is used the first few times.

4. Wait 5 minutes, then check for heat.

If Oven(s) Does Not Operate, Check the Following:

- Household fuse is intact and tight; or circuit breaker has not tripped.
- Electrical supply is connected.
- See the online "Troubleshooting".

5. Place the SatinGlide™ Roll-Out Extension Rack for Smart Oven+ Attachments in the lowest rack position in the unit to make sure the correct accessory rack is on the bottom.
6. Press UPPER CANCEL/LOWER CANCEL on double ovens, or press CANCEL on single ovens.

If you need Assistance or Service:

Please refer to the Quick Start Guide for contact information.

APR 25 2024

AB

Ry

pr2-14



PRODUCT MODEL NUMBERS

JDAF3924RX

JDAF5924RL

JDAF5924RM

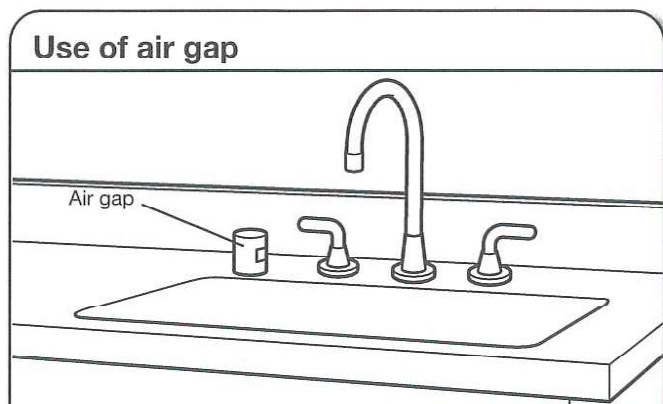
JDAF5924RX

DRAIN REQUIREMENTS

- A new drain hose is supplied with your dishwasher. If drain hose is not long enough, use a drain hose extension with a maximum length of 12 ft (3.7 m).
- Make sure to connect drain hose to waste tee or disposer inlet above drain trap in house plumbing and 20" (508 mm) minimum above the floor. It is recommended that the drain hose either be looped up and securely fastened to the underside of the counter or be connected to an air gap.

IMPORTANT: This product is not equipped with a high loop on the side of the dishwasher. The installer is responsible for adding a high loop in the adjacent cabinet. A high loop is required if the dishwasher will drain into a floor drain. This prevents water draw off from the dishwasher during operation. When the drain is connected to a sink drain, counter-top air-gap or disposer, the high loop is generally not required. An check valve internal to the drain prevents back-flow into the dishwasher.

- Make sure to use an air gap if the drain hose is connected to house plumbing lower than 20" (508 mm) above subfloor or floor.



- If required, the air gap should be installed in accordance with the air gap installation instructions. When you are connecting the air gap, a rubber hose (not provided) will be needed to connect to the waste tee or disposer inlet.
- Use 1/2" (13 mm) minimum I.D. drain line fittings.

WATER SUPPLY REQUIREMENTS

- This dishwasher maybe fitted with a smart inlet hose with a water cut off valve. Do not cut the water inlet hose for any reason, to install, adapt or shorten.
- This dishwasher has a water heating feature and also requires a connection to a hot water supply line.
- A hot water line with 20 psi to 120 psi (138 kPa to 862 kPa) water pressure can be verified by a licensed plumber.
- 120°F (49°C) water at dishwasher.
- 3/8" (95 mm) O.D. copper tubing with compression fitting or flexible braided water supply line.

Because Whirlpool Corporation policy includes a continuous commitment to improve our products, we reserve the right to change materials and specifications without notice.

W11589944B

Undercounter Dishwasher

- Included water inlet hose with Leak Detection System for some models.
- Included 3/8" (9.5 mm) Compression x 3/4" (19 mm) Water inlet adapter (only for models with Leak Detection System).
- If installed in new construction, make sure the house water supply lines have been flushed prior to connecting the dishwasher to remove any debris that may exist in the supply line.

ELECTRICAL REQUIREMENTS

Be sure that the electrical connection and wire size are adequate and in conformance with the National Electrical Code, ANSI/NFPA 70 - latest edition, and all local codes and ordinances.

For a fee, a copy of the above code standards can be obtained from:

National Fire Protection Association
1 Batterymarch Park
Quincy, MA 02169-7471

You Must Have:

- 120 V, 60 Hz, AC only, 15 A or 20 A, fused electrical supply.
- Copper wire only.
- A maximum of 2 field wiring supply conductors (12 AWG largest size) plus 1 grounding conductor are permitted in the terminal box.

We Recommend:

- Install the dishwasher on a circuit with appropriate interrupte per your local code. The dishwasher is compatible with tim delay fuses, standard circuit breakers, and GFCI and AFCI circuit breakers.

Circuit Requirement:

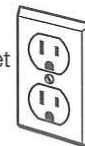
- The dishwasher may be installed on the same circuit as a garbage disposal providing that the branch circuit cannot exceed rated circuit load and must comply with all governing codes and regulations such as but not limited to National Electrical Code, ANSI/NFPA 70 - latest edition.
- No electrical connections other than the dishwasher power and ground connections can be made inside of the dishwasher junction box.

If Connecting Dishwasher with a Power Cord:

- Use UL Listed power cord kit marked for use with dishwasher. See the "Tools and Parts" section at the front of the Owner's manual for part details and orders.

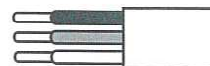


- Plug into a grounded 3 prong outlet. Outlet must meet all local codes and ordinances.



If Connecting Dishwasher with Direct Wiring:

- Use flexible, armored, or nonmetallic sheathed copper wire with grounding wire that meets the wiring requirements for your home and local codes and ordinances.
- Use only the supplied plastic cable fittings for flexible and non-metallic sheathed wiring (Romex, etc.). Do not use metallic strain reliefs for these wire constructions.
- Use a UL-listed/CSA-approved metallic strain relief for armored cable installations (21 mm diameter), Using the strain relief's manufacturer installations instructions.



Dimensions are for planning purposes only. For complete details, see Installation Instructions packed with product. Specifications subject to change without notice.

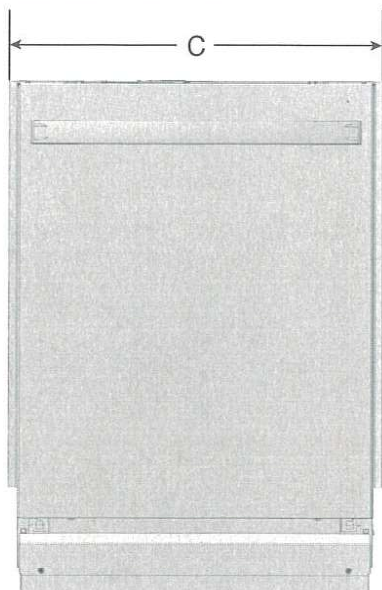
APR 25 2024

PR2-14

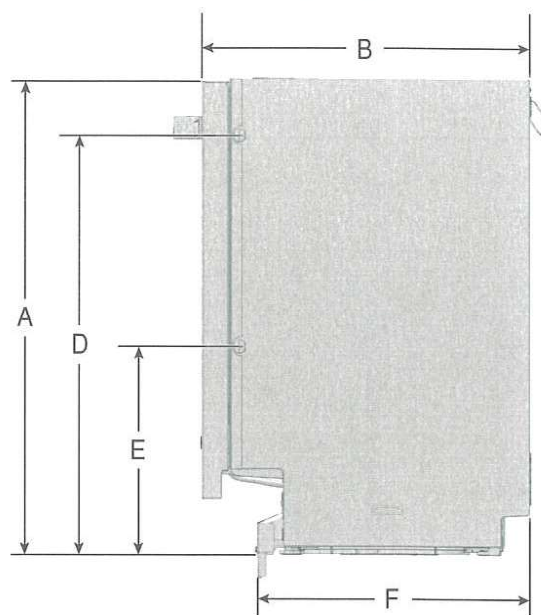
AB

Ry

PRODUCT DIMENSIONS

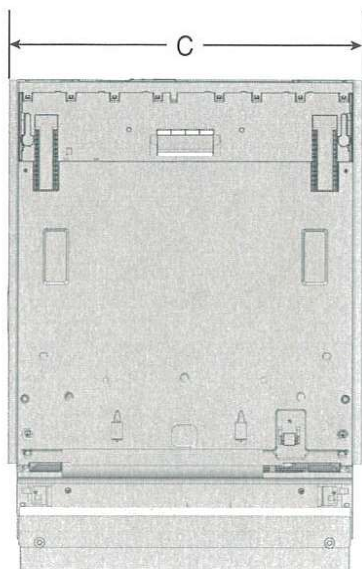


C. $23\frac{3}{16}$ " (599 mm)

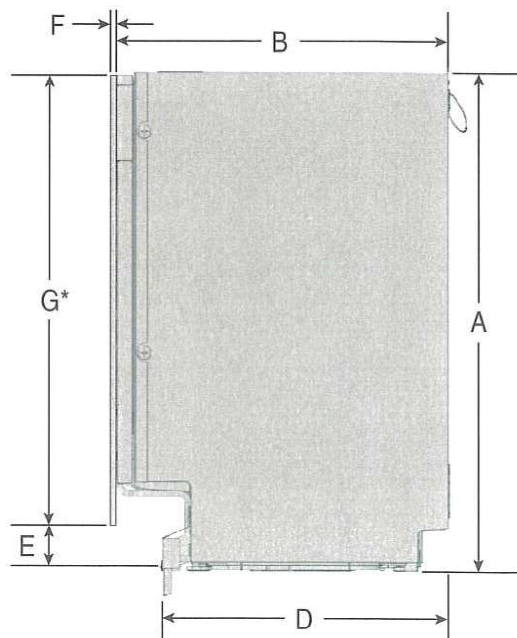


A. $32\frac{1}{4}$ "- $35\frac{7}{16}$ " (820-900 mm) E. $14\frac{1}{16}$ " (358 mm)
 B. $22\frac{5}{8}$ " (574 mm) F. $18\frac{3}{4}$ " (477 mm)
 D. $28\frac{3}{8}$ " (721 mm)

PRODUCT DIMENSIONS (FOR PANEL READY MODELS)



C. $23\frac{3}{16}$ " (599 mm)



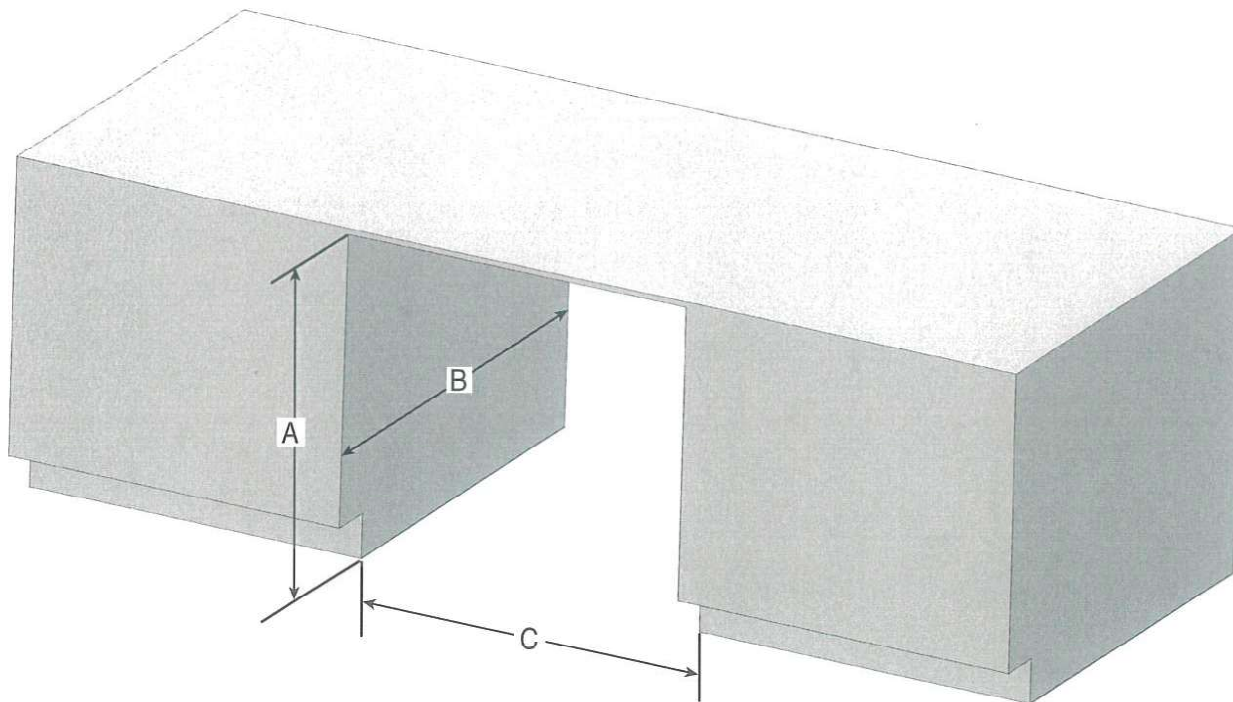
A. $32\frac{1}{4}$ "- $35\frac{7}{16}$ " (820-900 mm) E. $E = A - G$
 B. $21\frac{7}{8}$ " (555 mm) F. $11\frac{1}{16}$ "- $1\frac{3}{4}$ " (18-45 mm)
 D. $18\frac{3}{4}$ " (477 mm) G. $28\frac{3}{8}$ "- $29\frac{5}{16}$ " (720-760 mm)

***NOTE:** If a custom toe kick is desired to be installed, adjust the thickness of the custom panel to make it flush with the cabinet toe kick. Product's original metal toe kick must remain even if custom toe kick is installed.

Because Whirlpool Corporation policy includes a continuous commitment to improve our products, we reserve the right to change materials and specifications without notice.

Dimensions are for planning purposes only. For complete details, see Installation Instructions packed with product. Specifications subject to change without notice.

CABINET OPENING DIMENSIONS



- A. $32\frac{1}{4}"$ - $35\frac{7}{16}"$ (820-900 mm) measured from the lowest point on the underside of the countertop.
- B. 24" (609.6 mm) Minimum
- C. $23\frac{5}{8}"$ - $24\frac{1}{4}"$ (600-616 mm) Minimum, measured from narrowest point of opening.

Because Whirlpool Corporation policy includes a continuous commitment to improve our products, we reserve the right to change materials and specifications without notice.

Dimensions are for planning purposes only. For complete details, see Installation Instructions packed with product. Specifications subject to change without notice.

APR 25 2024

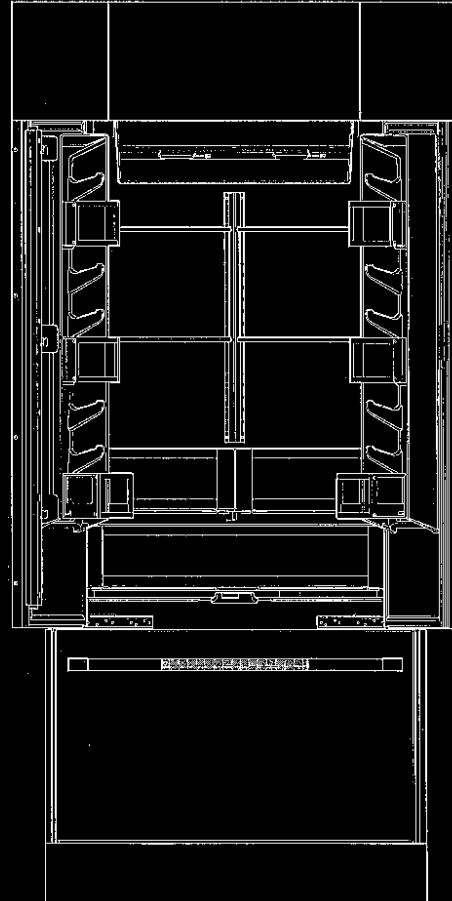
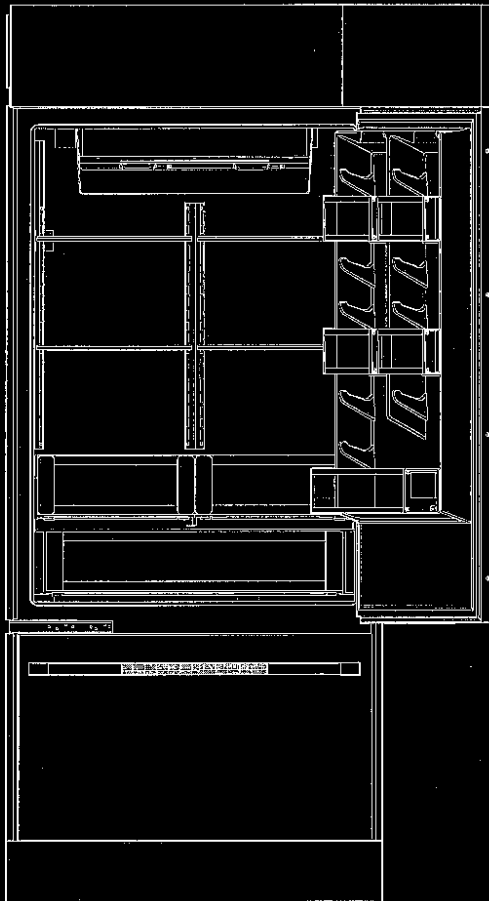
PV2-14

AB

Ry 3

INSTALL

BOTTOM MOUNT BUILT-IN REFRIGERATOR RÉFRIGÉRATEUR ENCASTRÉ AVEC CONGÉLATEUR EN BAS



For questions about features, operation/performance, parts, accessories, or service, call:
1-800-JENNAIR (1-800-536-6247) or visit our website at www.jennair.com.

In Canada, call: **1-800-JENNAIR (1-800-536-6247)**, or visit our website at www.jennair.ca.

Pour des questions à propos des caractéristiques, du fonctionnement/rendement, des pièces, accessoires ou service, composer le :
1 800 JENNAIR (1 800 536-6247) ou visiter notre site Web au www.jennair.com.

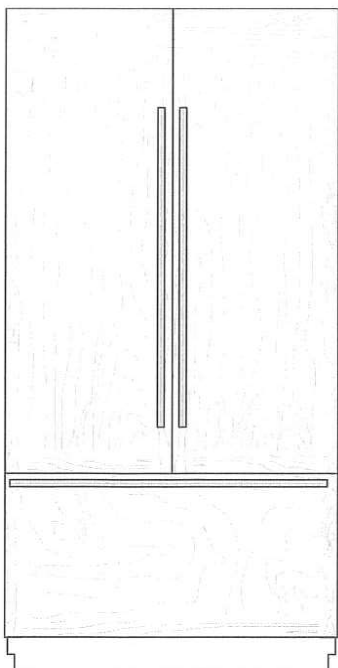
Au Canada, composer le : **1 800 JENNAIR (1 800 536-6247)** ou visiter notre site Web au www.jennair.ca.



JENNAIR®

WT1511880C

36" AND 42" FRENCH DOOR MODELS

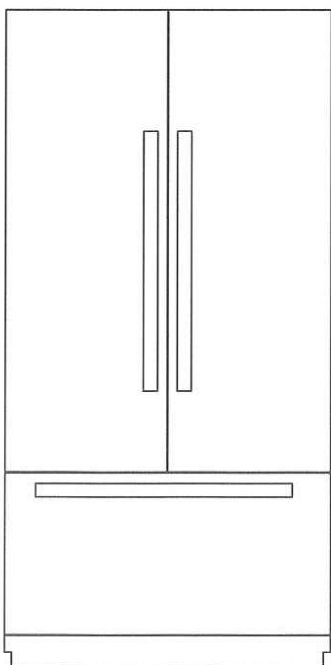


Custom-Made Panel Design

Features custom-made panels and custom hardware provided by the cabinetmaker for a seamless appearance designed to blend with existing kitchen cabinetry.

Base Model Numbers: JF42NXXFXDE, JF36NXXFXDE

ARMOIRE KIT NUMBER: W10663562, W10663564

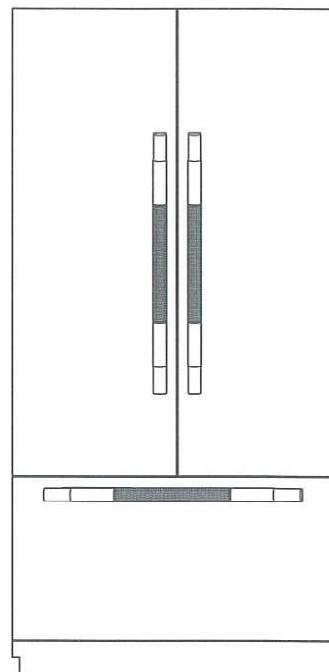


NOIR™ Stainless Design

Features stainless steel wrapped doors and new NOIR™ handles.

Base Model Numbers: JF42NXXFXDE, JF36NXXFXDE

Panel Kit Model Number: JBFFS42NHL, JBFFS36NHL



RISE™ Stainless Design

Features stainless steel wrapped doors and new RISE™ handles.

Base Model Numbers: JF42NXXFXDE, JF36NXXFXDE

Panel Kit Model Number: JBFFS42NHL, JBFFS36NHL

ACCESSORIES

All factory parts are available through JennAir dealer or by calling JennAir® at **1-800-JENNAIR (1-800-536-6247)**. In Canada, call **1-800-536-6247**.

DOOR HANDLE KITS

For custom wood overlay panels only, handle kits can be ordered. Follow the kit instructions for installation.

Handle Kits contain 3 handles per Kit.

IMPORTANT: These handle kits are not intended for use with stainless steel door panel kits.

RISE™ Stainless Steel—36" FDBM—W11231247

NOIR™ Stainless Steel—36" FDBM—W11194768

RISE™ Stainless Steel—42" FDBM—W11296021

NOIR™ Stainless Steel—42" FDBM—W11194769

ARMOIRE-STYLE DOOR PANEL KIT

Refer to the installation instructions that come with the Armoire kit, for custom wood overlay panel dimensions and installation details.

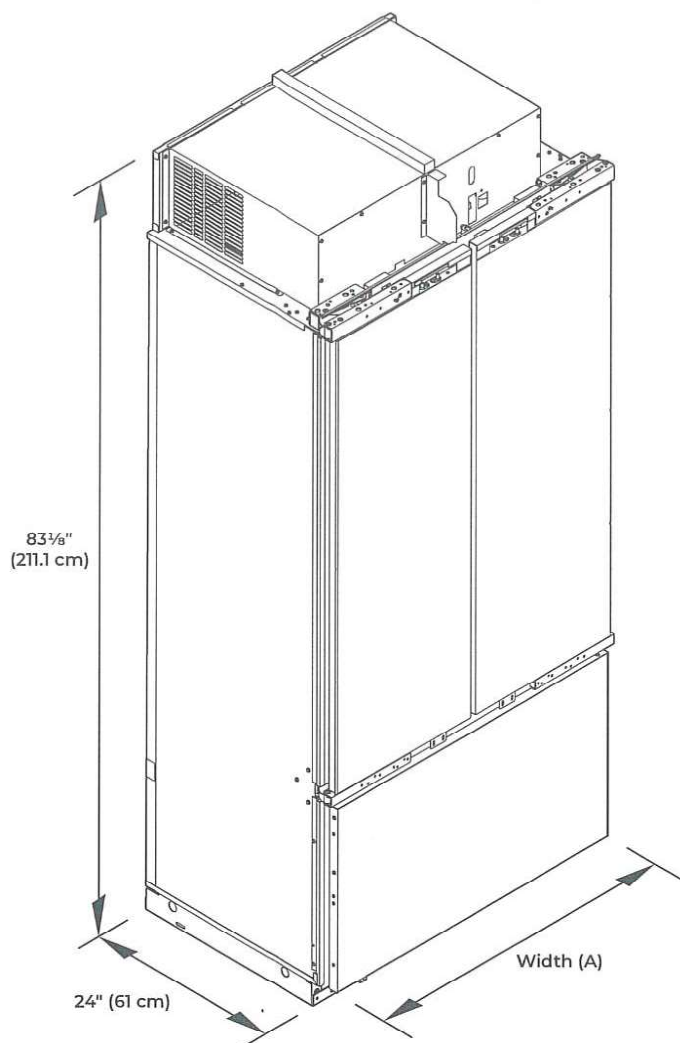
36" Model — W10663562

42" Model — W10663564

APR 25 2024

AB Ry
PV2-14

FRENCH DOOR BOTTOM MOUNT MODELS



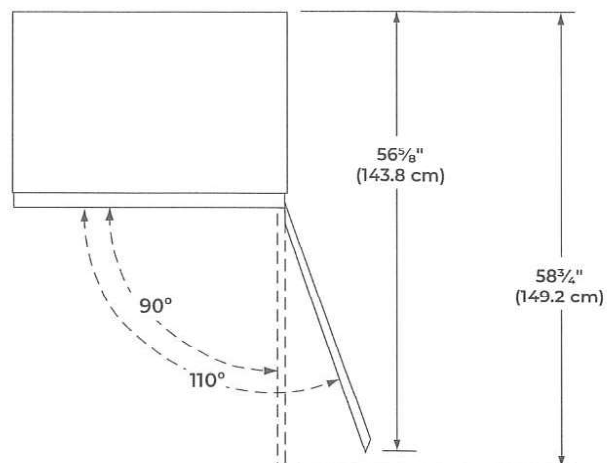
MODEL	WIDTH A (HINGE EDGE TO HINGE EDGE)
36	35 3/4" (90.8 cm)
42	41 3/4" (106 cm)

DOOR SWING DIMENSIONS

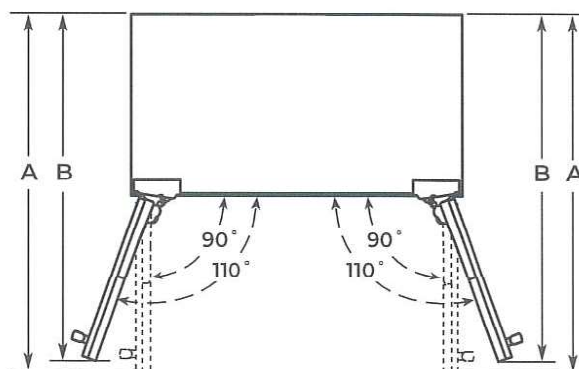
The location must permit both doors to open to a minimum of 90°. Allow 4 1/2" (11.4 cm) minimum space between the side of the refrigerator and a corner wall.

NOTE : More clearance may be required if you are using wood overlay panels, custom handles, or extended handles.

36" SINGLE DOOR MODEL



36" (91.4 CM) AND 42" (106.6 CM) FRENCH DOOR MODELS



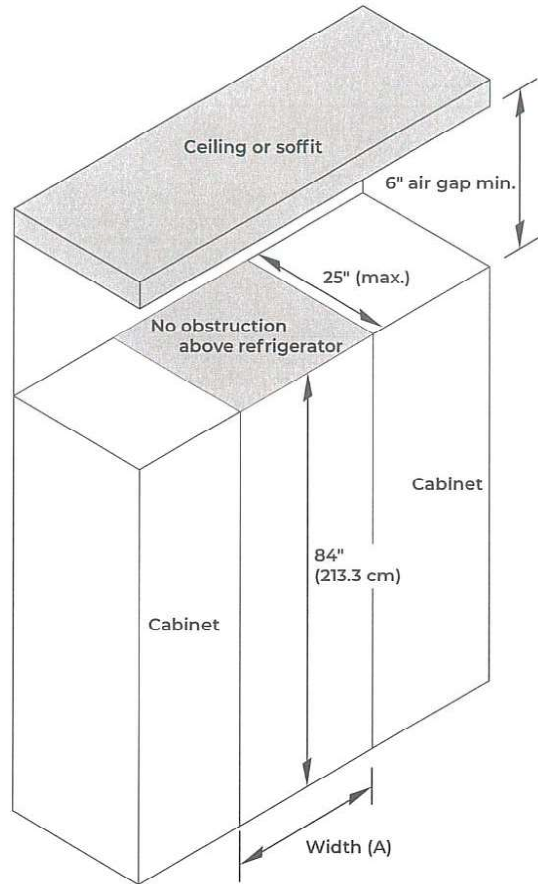
MODEL	A	B
36	41" (104 cm)	39 3/4" (101 cm)
42	44" (111.8 cm)	42 3/4" (108.6 cm)

APR 25 2024

AB
RV
PV2-14

SITE PREPARATION

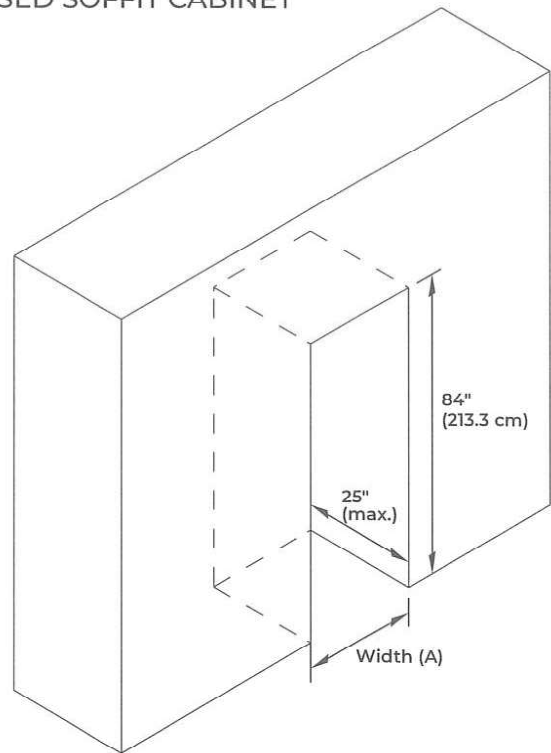
OPEN TO CEILING OR SOFFIT CABINET



MODEL	WIDTH A
36	36" (91.4 cm)
42	42" (106.7 cm)

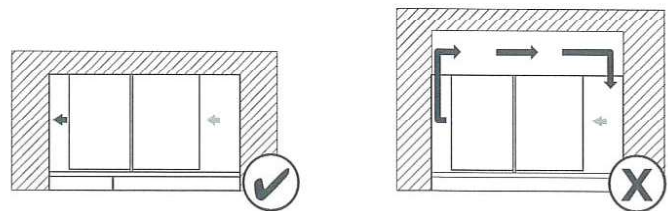
- These type of installations require a minimum of 6" (15.24 cm) of open space above the refrigerator. This space must not be blocked in any way, including soffits.
- Depth of cabinet must be less than 25" (63.5 cm).
- If your opening does not meet these requirements, you will need to make modifications.

CLOSED SOFFIT CABINET

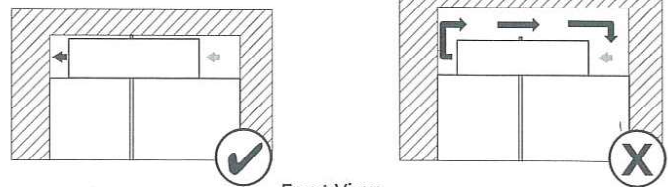


MODEL	WIDTH A
36	36" (91.4 cm)
42	42" (106.7 cm)

- Depth of cabinet must be less than 25" (63.5 cm).
- Height of soffit must not exceed 84" (213.3 cm).
- Following illustrations explain the cabinet construction (soffit and rear wall positions) required for optimum ventilation and airflow.



Top View



Front View

Grey arrow = ambient air;

Black arrow = warm air

Cabinet depth 25" and soffit located at 84", provides proper airflow/ventilation to the refrigerator. Efficient cooling is achieved.

Cabinet depth more than 25" and/or soffit located at more than 84", causes air gap at back and/or top of the refrigerator. Air gap allows warm air recirculation causing loss in cooling efficiency.

- If your opening does not meet these requirements, you will need to make modifications.

APR 25 2024

AB Ry
PV2-14

ANTI-TIP BOARDS

For open to ceiling or soffit cabinet constructions the refrigerator must be braced with the help of primary and secondary anti-tip boards.

PRIMARY ANTI-TIP BOARDS

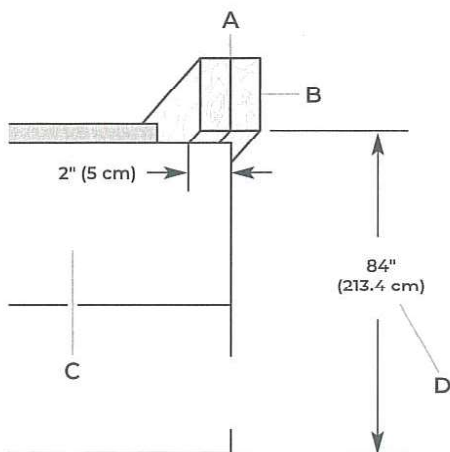
IMPORTANT:

- It is recommended that primary anti-tip boards be installed before the refrigerator is installed.
- Boards must be long enough to fully cover the width of the compressor cover.
- Place the boards so that the bottom surfaces of the boards are 84" (213 cm) from the floor.
- During installation, raise the refrigerator up until the top of the refrigerator is making contact with the bottom of the anti-tip boards. Do not crush the compressor cover when raising the rear leveling legs.

NOTE: The foam gasket, on top of the compressor cover, will compress to fit under the anti-tip board(s). There is no need to trim the gasket.

To install primary anti-tip boards-

1. Mark the stud locations on rear wall.
2. Securely attach two 2" x 4" x 32" (5 cm x 10 cm x 81 cm) boards to wall studs behind refrigerator. Use six #8 x 3" (7.6 cm) (or longer) wood screws. The wood screws must be screwed into the studs at least 1½" (3.8 cm). The boards must overlap the compressor cover.



A. Two 2" x 4" x 32" (5 cm x 10 cm x 81 cm) boards
B. Attach to studs with six #8 x 3" (7.6 cm) screws.
C. Compressor cover
D. Distance from bottom of anti-tip boards to floor

SECONDARY ANTI-TIP BOARDS

⚠ WARNING



Tip Over Hazard

Refrigerator is top heavy and tips easily when not completely installed.

Install secondary anti-tip board to ensure product stability.

Use two or more people to move and install refrigerator.

Failure to do so can result in death or serious injury.

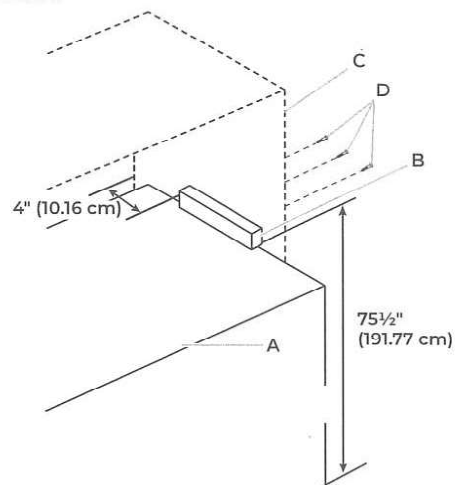
- For all full height door or armoire panel installations, the secondary anti-tip board is required to be installed prior to door panel installation.
- This anti-tip board is to be secured on the right side of the cabinet enclosure as per the dimensions shown in illustration.
- Secure the secondary anti-tip board so that the bottom surface of the secondary anti-tip board is 75½" (191.77 cm) from the floor (right hand side).

To install secondary anti-tip board-

1. Mark the stud locations on right hand side cabinet wall.
2. Securely attach one 2" x 4" x 12" (5 cm x 10 cm x 30.4 cm) board to the cabinet on right hand side cabinet using wood screws. Use three #8 x 2" (5.08 cm) (or longer) wood screws.

NOTE:


- It is recommended to drive the wood screws from cabinet wall into the secondary anti-tip board as shown in the illustration.
- The board must have overlap of 1" (2.54) with the refrigerator top.
- Leave 4" (10.16 cm) free space at rear as shown in the illustration.



A. Refrigerator
B. Secondary anti-tip board
C. Kitchen cabinet
D. Wood screws

LOCATION REQUIREMENTS

⚠ WARNING



Explosion Hazard
Keep flammable materials and vapors, such as gasoline, away from refrigerator.
Failure to do so can result in death, explosion, or fire.

IMPORTANT: This refrigerator is designed for indoor, household use only.

This appliance is intended to be used in household and similar applications such as:

- Staff kitchen areas in shops, offices and other working environments.
- Farm houses and by clients in hotels, motels and other residential type environments.
- Bed and breakfast type environments.
- Catering and similar non-retail applications.

NOTE: The refrigerator is intended for use in a location where the temperature ranges from a minimum of 55°F (13°C) to a maximum of 43°C (110°F). The preferred room temperature range for optimum performance, which reduces electricity usage and provides superior cooling, is between 15°C (60°F) and 32°C (90°F). It is recommended that you do not install the refrigerator near a heat source, such as an oven or radiator.

IMPORTANT:

- Observe all governing codes and ordinances.
- It is recommended that you do not install the refrigerator near an oven, radiator, or other heat source.
- Do not install in a location where the temperature will fall below 13°C (55°F).
- Floor must support the refrigerator weight, more than 600 lbs (272 kg), door panels and contents of the refrigerator. Flooring under refrigerator must be at same level as the room. Face of cabinetry must be plumb.
- Location should permit door to open fully. See "Door Swing Dimensions."
- Location must permit top grille removal. See "Site Preparation."

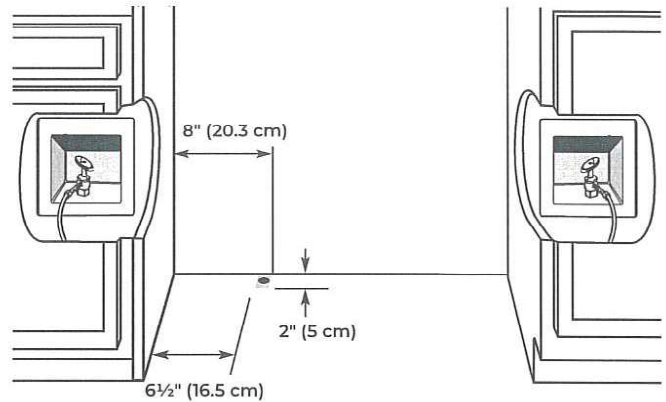
WATER SUPPLY REQUIREMENTS

IMPORTANT :

- All installations must meet local plumbing code requirements.
- Connect to potable water supply only.

Do not use with water that is microbiologically unsafe or of unknown quality without adequate disinfection before or after the system. Systems certified for cyst reduction may be used on disinfected waters that may contain filterable cysts.

- There is not enough clearance to achieve a flush installation if a water shutoff valve is located in the wall behind the refrigerator.
- The water shutoff should be located in the base cabinet on either side of the refrigerator or some other easily accessible area. The water supply line, however, must come up through the floor in the gray shaded area shown.



- A 1/2" (12.7 mm) hole for plumbing should be drilled on the floor at least 6 1/2" (16.5 cm) from the left-hand side cabinet and should be no more than 2" (5 cm) away from the back wall. Refer above illustration for more details.
- The water supply connection is made at the front of the refrigerator.
- If additional tubing is needed, use copper tubing and check for leaks. Install the copper tubing only in areas where the household temperatures will remain above freezing.
- Do not use a piercing-type or 3/16" (4.76 mm) saddle valve which reduces water flow and also clogs more easily.

NOTE : Your refrigerator dealer has a kit available with a 1/4" (6.35 mm) saddle-type shutoff valve, a union, and copper tubing. Before purchasing, make sure a saddle-type valve complies with your local plumbing codes.

APR 25 2024

AB Ry pr2-14

WATER PRESSURE

A cold water supply with water pressure between 30 psi and 120 psi (207 kPa and 827 kPa) is required to operate the water dispenser and ice maker. If you have questions about your water pressure, call a licensed, qualified plumber.

REVERSE OSMOSIS WATER SUPPLY

IMPORTANT : The pressure of the water supply coming out of a reverse osmosis system going to the water inlet valve of the refrigerator needs to be between 30 psi and 120 psi (207 kPa and 827 kPa).

If a reverse osmosis water filtration system is connected to your cold water supply, the water pressure to the reverse osmosis system needs to be a minimum of 40 psi to 60 psi (276 kPa to 414 kPa).


If the water pressure to the reverse osmosis system is less than 40 psi to 60 psi (276 kPa to 414 kPa):

- Check to see whether the sediment filter in the reverse osmosis system is blocked. Replace the filter if necessary.
- Allow the storage tank on the reverse osmosis system to refill after heavy usage.
- If your refrigerator has a water filter, it may further reduce the water pressure when used in conjunction with a reverse osmosis system. Remove the water filter cartridge.

If you have questions about your water pressure, call a licensed, qualified plumber.

ELECTRICAL REQUIREMENTS

⚠ WARNING



Electrical Shock Hazard

Plug into a grounded 3 prong outlet.

Do not remove ground prong.

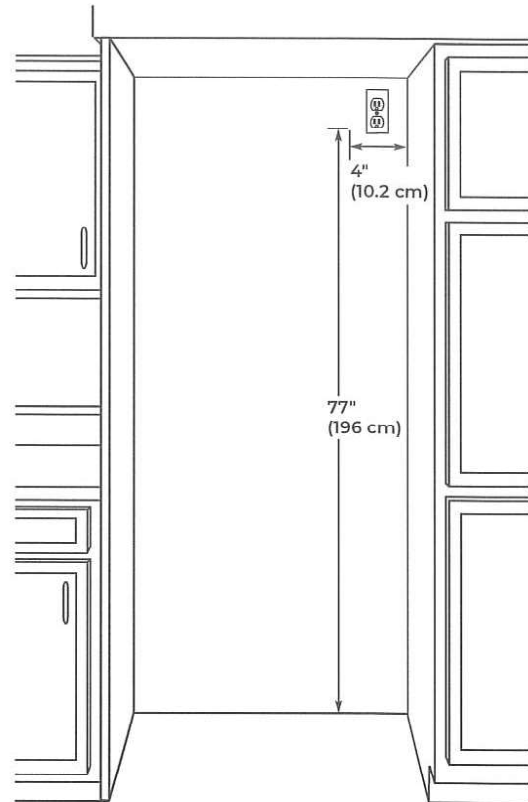
Do not use an adapter.

Do not use an extension cord.

Failure to follow these instructions can result in death, fire, or electrical shock.

Before you move your refrigerator into its final location, it is important to make sure you have the proper electrical connection.

A grounded 3 prong electrical outlet should be located within a specified number of inches from the right-hand side cabinets or end panel. See the chart following the illustration for the number of inches required for your model.



If the supply cord is damaged, it must be replaced by the manufacturer or its service agent or a similar qualified person. Do not use a cord that shows cracks or abrasion damage along its length or at either the plug or connection end.

RECOMMENDED GROUNDING METHOD

A 115 V, 60 Hz, AC only, 15 A or 20 A fused, grounded electrical supply is required. It is recommended that a separate circuit serving only your refrigerator be provided. Use an outlet that cannot be turned off by a switch. Do not use an extension cord.

IMPORTANT : If this product is connected to a GFCI (Ground Fault Circuit Interrupter) protected outlet, nuisance tripping of the power supply may occur, resulting in loss of cooling. Food quality and flavor may be affected. If nuisance tripping has occurred, and if the condition of the food appears poor, dispose of it.

NOTE : Before performing any type of installation or cleaning, remove the top grille and turn the master power switch to OFF or disconnect power at the circuit breaker box.

When you are finished, turn ON the master power switch or reconnect power at the circuit breaker box. Then reset the control to the desired setting.

STAINLESS STEEL PANEL KIT INSTALLATION REQUIREMENTS

Refer instructions received with full height door panel kit.

CUSTOM WOOD PANEL DIMENSIONS AND INSTALLATION REQUIREMENTS

Refer instructions received with Armoire kit.

INSTALLATION INSTRUCTIONS

UNPACK THE REFRIGERATOR

⚠ WARNING



Tip Over Hazard

Refrigerator is top heavy and tips easily when not completely installed.

Keep doors taped closed until refrigerator is completely installed.

Use two or more people to move and install refrigerator.

Failure to do so can result in death or serious injury.

IMPORTANT :

- Do not remove the film covering until the refrigerator is in its operating location.
 - All four leveling legs must contact the floor to support and stabilize the full weight of the refrigerator.
 - Keep the cardboard shipping piece or plywood under the refrigerator until it is installed in the operating location.
1. Remove and save the literature package and hardware kit located inside the refrigerator. Remove and save the literature, grille, and trim taped to the outside of the refrigerator.

NOTE : Do not remove tape and door bracing until the refrigerator is in its final location.

MOVE THE REFRIGERATOR INTO HOUSE

⚠ WARNING



Tip Over Hazard

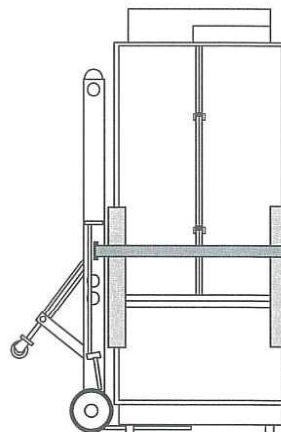
Refrigerator is top heavy and tips easily when not completely installed.

Keep doors taped closed until refrigerator is completely installed.

Use two or more people to move and install refrigerator.

Failure to do so can result in death or serious injury.

1. Place an appliance dolly under the left side of the refrigerator as shown. Place the corner posts from the packing materials over the trims as appropriate. Slowly tighten the strap.



2. Place pieces of the shipping carton on the floor when rolling the dolly and refrigerator into the house. Move the refrigerator close to the built-in opening.
3. Place top of cardboard carton or plywood under refrigerator. Stand the refrigerator up. First, place the left bottom edge of the refrigerator on the floor, stand the refrigerator upright and then lower the right-hand side of the refrigerator to the floor.
4. Reassemble the trim and top grille after the dolly has been removed from the refrigerator.

CONNECT THE WATER SUPPLY

Read all directions before you begin.

IMPORTANT :

- If you turn the refrigerator on before the water line is connected, turn the ice maker OFF.
- Connect to potable water supply only.

Do not use with water that is microbiologically unsafe or of unknown quality without adequate disinfection before or after the system. Systems certified for cyst reduction may be used on disinfected waters that may contain filterable cysts.

CONNECT TO WATER LINE

PARTS NEEDED

- Minimum 7 ft (2.13 m) flexible, codes-approved water supply line.

AB Ry PV2-14

APR 25 2024

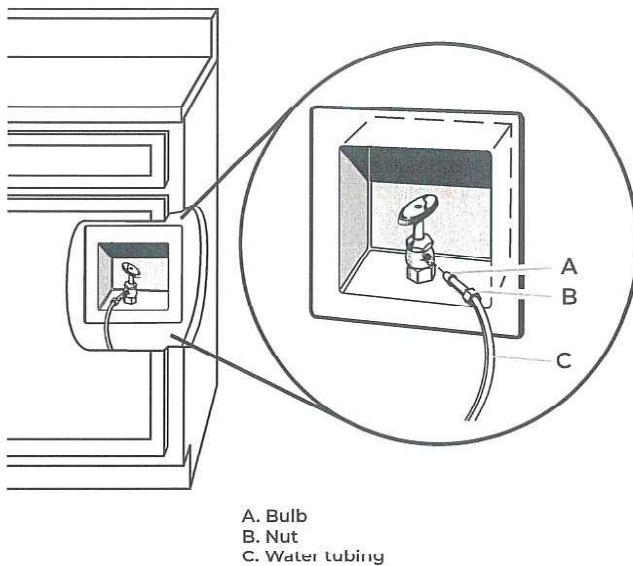
STYLE 1—SHUTOFF VALVE CONNECTION

NOTE : If your water line connection does not look like Style 1, see "Style 2—Copper Line Connection."

1. Unplug refrigerator or disconnect power supply.

IMPORTANT :

- There is not enough clearance to achieve a flush installation if a water shutoff valve is located in the wall behind the refrigerator. The water shutoff should be located in the base cabinet on either side of the refrigerator.
 - Before attaching the tubing to shutoff valve, flush the main water supply line to remove particles and air in the water line. Allow enough flow so that water becomes clear. Flushing the water line may help avoid filters and/or water valves from becoming clogged.
2. Connect the flexible, codes-approved water supply line to the water shutoff valve by threading the provided nut onto the shutoff valve as shown.



3. Place the end of the tubing into a bucket, and turn shutoff valve ON.
4. Check for leaks. Tighten any nuts or connections (including connections at the valve) that leak.

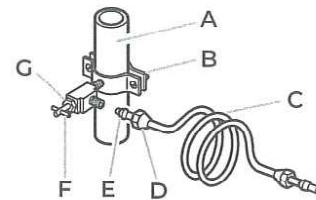
STYLE 2—COPPER LINE CONNECTION

NOTE : If there is a water supply line that meets the specifications in "Water Supply Requirements," proceed to "Connecting to Refrigerator." If not, use the following instructions to connect to the household cold water supply.

1. Unplug refrigerator or disconnect power.
2. Turn OFF main water supply. Turn ON nearest faucet long enough to clear line of water.
3. Locate a 1/2" to 1 1/4" (1.3 cm to 3.18 cm) vertical cold water pipe near the refrigerator.

IMPORTANT :

- Make sure it is a cold water pipe.
 - Horizontal pipe will work, but drill on the top side of the pipe, not the bottom. This will help keep water away from the drill and keep normal sediment from collecting in the valve.
4. Determine the length of copper tubing you need. Measure from the connection on the refrigerator to the water pipe. Add 7 ft (2.1 m) to allow for cleaning. Use 1/4" (6.35 mm) O.D. (outside diameter) copper tubing. Be sure both ends of copper tubing are cut square.
 5. Using a cordless drill, drill a 1/4" (6.35 mm) hole in the cold water pipe you have selected.



A. Cold water pipe
B. Pipe clamp
C. Copper tubing
D. Compression nut
E. Compression sleeve
F. Shutoff valve
G. Packing nut

6. Fasten the shutoff valve to the cold water pipe with the pipe clamp. Be sure the outlet end is solidly in the 1/4" (6.35 mm) drilled hole in the water pipe and that the washer is under the pipe clamp. Tighten the packing nut. Tighten the pipe clamp screws slowly and evenly so washer makes a watertight seal. Do not overtighten.

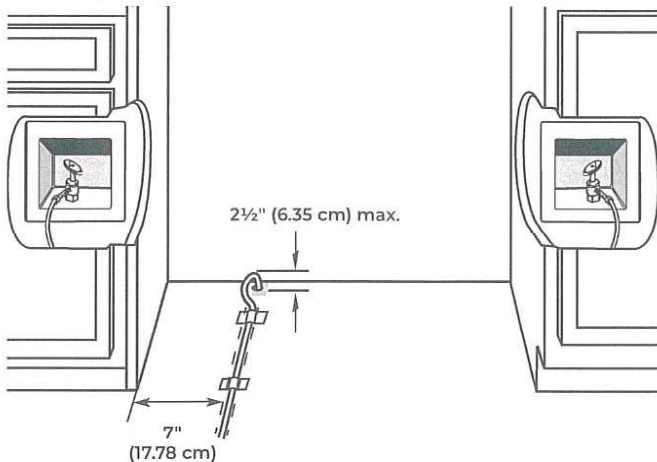
IMPORTANT : Before attaching the tubing to shutoff valve, flush the main water supply line to remove particles and air in the water line. Allow enough flow so that water becomes clear. Flushing the water line may help avoid filters and/or water valves from becoming clogged.

7. Slip the compression sleeve and compression nut on the copper tubing as shown. Insert the end of the tubing into the outlet end squarely as far as it will go. Screw compression nut onto outlet end with adjustable wrench. Do not overtighten the clamp or the sleeve. This will crush the copper tubing.
8. Turn off the shutoff valve on the water pipe. Coil the copper tubing.
9. Connect the flexible, codes-approved water supply line to the water shutoff valve by threading the provided nut onto the shutoff valve.
10. Place the end of the tubing into a bucket, and turn shutoff valve ON.
11. Check for leaks around the saddle valve. Tighten any nuts or connections (including connections at the valve) that leak.

CONNECT TO REFRIGERATOR

PARTS SUPPLIED

- 1/4" to 1/4" (6.35 mm to 6.35 mm) male-to-male coupling.



NOTE : The flexible, codes-approved water supply line should connect to the supply valve through the floor.

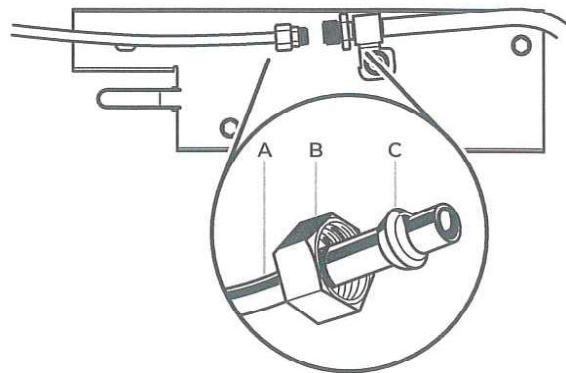
1. Unplug the refrigerator or disconnect power.
2. Connect the 7 ft (2.13 m) flexible codes-approved water tube to the water supply valve.
3. Flush the main water supply line to remove particles and air in the water line. Allow enough flow so that water becomes clear.
4. Tape the 7 ft (2.13 m) flexible codes-approved water supply line to the floor, 7" (17.78 cm) from the left side of the refrigerator. Tape along the length of the tubing, which will allow it to pass beneath the refrigerator without interference.

NOTE : Allow a minimum of 26" (66.04 cm) of flexible codes approved water supply line to be loose at the front of the refrigerator for connecting to the refrigerator.

5. Connect the 7 ft (2.13 m) flexible codes-approved water supply line to the refrigerator.

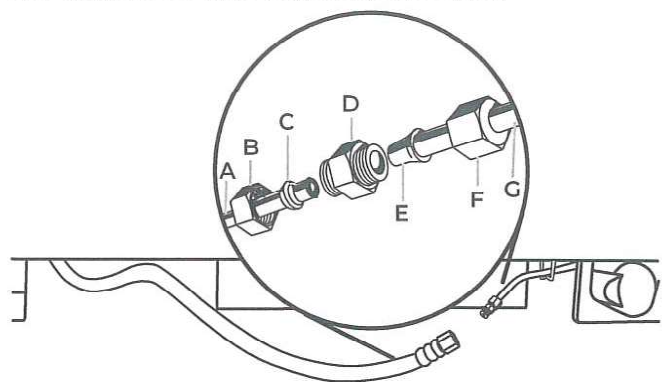
NOTE : If the main water shutoff valve is behind the refrigerator, a secondary water shutoff valve may be installed in line with the water supply line at the front of the product.

OVERMOLD COUPLING (ON SOME MODELS)



- A. Household water line
- B. Nut (purchased)
- C. Ferrule (purchased)

DISCRETE COUPLING (ON SOME MODELS)



- A. Household water line
- B. Nut (purchased)
- C. Ferrule (purchased)
- D. Coupling
- E. Bulb
- F. Nut
- G. Refrigerator water tubing

6. Turn on the water supply valve and check all connections for leaks.

APR 25 2024

AB Ry
PR2-14

PLUG IN REFRIGERATOR

⚠ WARNING



Electrical Shock Hazard

Plug into a grounded 3 prong outlet.

Do not remove ground prong.

Do not use an adapter.

Do not use an extension cord.

Failure to follow these instructions can result in death, fire, or electrical shock.

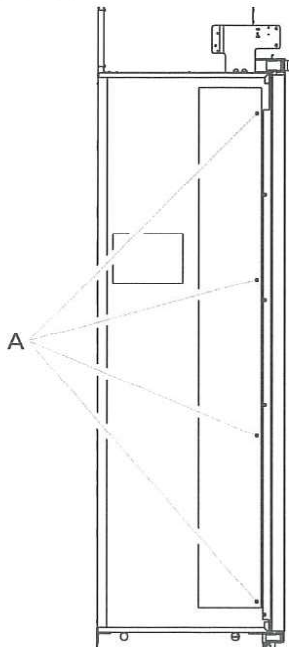
If the supply cord is damaged, it must be replaced by the manufacturer or its service agent or a similar qualified person. Do not use a cord that shows cracks or abrasion damage along its length or at either the plug or connection end.

1. Set control switch at top of cabinet to the OFF position.
2. Plug into a grounded 3 prong outlet.

INSTALL SIDE TRIMS

The side trims cover the space between the refrigerator and the adjacent cabinets. There is a trim piece taped to each side of the refrigerator. Install each trim piece to the side of the refrigerator to which it is taped.

1. Remove the tape attaching the trim pieces to the sides of the refrigerator. Set the trim pieces aside.
2. Remove the four screws from the side of the refrigerator cabinet.

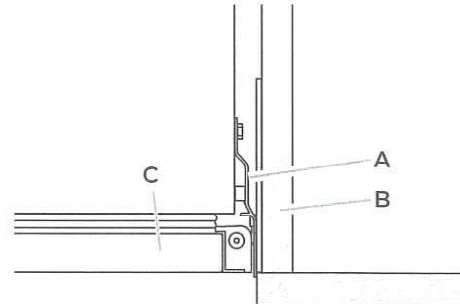


A. Side trim screws

3. Using the original holes and the screws removed in Step 2, fasten the side trim to the refrigerator cabinet.

NOTE : Make sure to fasten each trim piece to the side of the refrigerator cabinet from which it was removed. The tapered shaped edge should be forward with the notches aligning with the door hinges.

TOP VIEW



A. Side trim
B. Adjacent cabinet

C. Door

MOVE REFRIGERATOR TO FINAL LOCATION

⚠ WARNING



Tip Over Hazard

Refrigerator is top heavy and tips easily when not completely installed.

Keep doors taped closed until refrigerator is completely installed.

Use two or more people to move and install refrigerator.

Failure to do so can result in death or serious injury.

IMPORTANT :

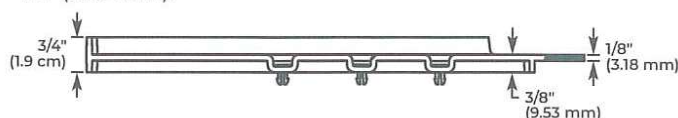
- A flush installation is NOT possible with a 24" (60.9 cm) deep opening.
- To avoid floor damage, make sure levelers are raised (not touching floor) and refrigerator is on rollers before moving.
- Use the installation block, attached to the door hinge, as a reference to make sure the refrigerator is pushed back far enough into the opening, so that when the panels are installed they will be flush with the adjacent cabinets.

APR 25 2024

AB RV
RV2-14

- After the refrigerator is leveled and aligned, remove the installation block from the door hinge and use it to check the spacing between the panels and adjacent cabinets.

NOTE : The installation block is designed to provide accurate spacing for 3/4" (1.9 cm), 3/8" (9.53 mm) and 1/8" (3.18 mm).

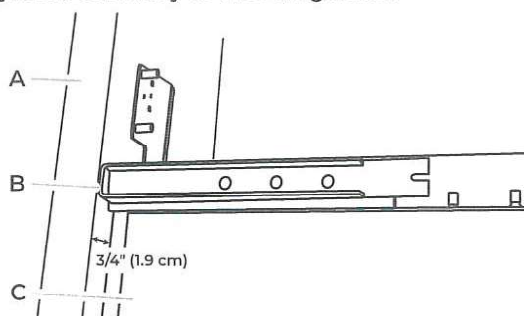


1. Place top of cardboard carton or plywood under refrigerator. Remove dolly.
2. Move the refrigerator straight back and evenly into the opening. Be sure that the water tubing is not kinked and the power supply cord is on top of the refrigerator.

NOTE : If the power supply cord is behind the refrigerator, it will not install properly.

3. Make sure the installation block is flush with the adjacent cabinets.

NOTE : To achieve a flush installation, it is critical to verify a 3/4" (1.9 cm) depth from the front face of the adjacent cabinetry to the refrigerator.



A. Adjacent cabinet or wall
B. Installation block
C. Face of refrigerator

LEVEL AND ALIGN REFRIGERATOR

⚠ WARNING



Tip Over Hazard

Refrigerator is top heavy and tips easily when not completely installed.

Keep doors taped closed until refrigerator is completely installed.

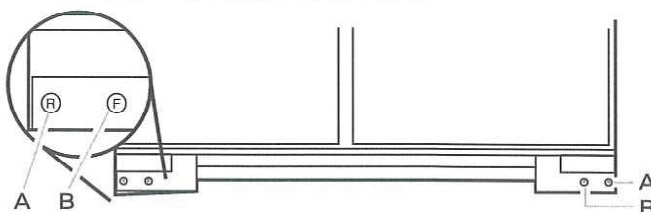
Use two or more people to move and install refrigerator.

Failure to do so can result in death or serious injury.

IMPORTANT : All four leveling legs must contact the floor to support and stabilize the full weight of refrigerator. Rollers are for moving the refrigerator, not for permanent support.

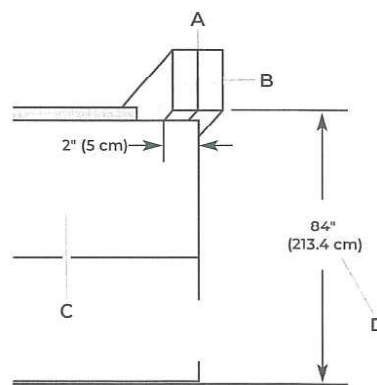
After moving the refrigerator to its final location:

1. Use a 5/16" socket driver to turn the leveling bolts clockwise to extend the legs to the floor as shown. The rollers should be off the floor.



A. Rear leveling bolt
B. Front leveling bolt

2. Adjust the leveling legs to level and align the refrigerator from left to right and front to back so that the refrigerator is level and aligned with the cabinets.
3. Continue adjusting the leveling legs until the top of the refrigerator is making contact with the bottom of the solid soffit, or the bottom of the anti-tip boards, if anti-tip boards were used. Do not crush the compressor cover.



A. Two 2" x 4" x 32" (5 cm x 10 cm x 81 cm) boards
B. Attach to studs with six #8 x 3" (7.6 cm) screws
C. Compressor cover
D. Distance from bottom of anti-tip board to floor

APR 25 2024

AB Ry
PV2-14

IMPORTANT : Adjust in small increments to keep from damaging the cabinet trim and causing problems with the door alignment or top grille fit. To avoid damage to the cabinet or leveling legs, do not apply more than 50 inch-pounds (5.65 Nm) of torque to the leveling bolts. The leveling legs can be extended to a maximum of 1½" (3.18 cm) below the rollers.

1. After leveling the refrigerator, again use a straight edge or 4-ft level across the front of the refrigerator installation blocks to check that the refrigerator is still flush.

INSTALL PANELS

Refer instructions received with full height door panel kit /Armoire kit to install stainless steel / Custom Wood Overlay Panels.

IMPORTANT : JennAir is not responsible for the removal or addition of molding or wood overlay panels that would not allow access to the refrigerator for service.

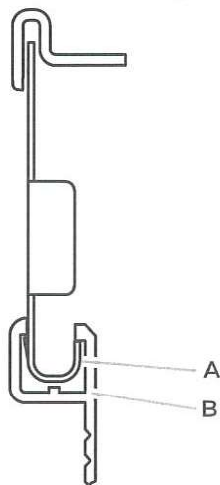
INSTALL BASE GRILLE

There are two pieces to the base grille to allow for a custom fit: the base grille itself and the skirt. The skirt can be added to the base grille in order to extend it all the way to the floor.

1. To see whether the skirt is needed, place the base grille into position. Do not attach the base grille to the refrigerator. Measure the distance between the bottom of the base grille and the floor. The gap must be a minimum of 1/2" (1.27 cm) in order to add the skirt.

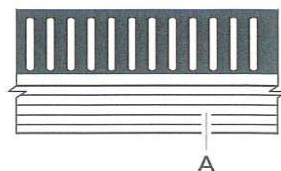
NOTE : If the gap measures less than 1/2" (1.27 cm), skip steps 3 and 4 of the instructions, and install the base grille only.

2. Remove the film from the base grille.
3. Snap the skirt onto the base grille.



A. Base grille
B. Skirt

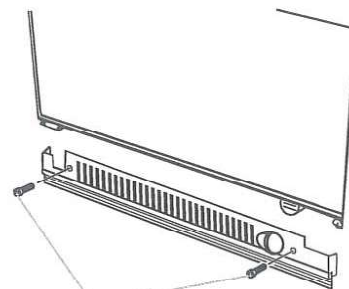
4. Trim the skirt by scoring the proper "V" groove with a utility knife. Break the skirt at the score line.



A. "V" groove

5. Using the 2 screws, attach the base grille assembly to the refrigerator as shown.

NOTE : Drive in the right side screw first.



A. Screws

COMPLETE INSTALLATION

1. Turn the water supply line valve to the "Open" position.
2. Turn the refrigerator switch to the ON position. See "Power On/ Off Switch" in the Use & Care Guide for instructions. Wait a few minutes. Check the water line connections for leaks.
3. Remove all boxes, parts packages and packing materials from the interior of the refrigerator. See the "Cleaning" section in the Use & Care Guide for instructions. Remove the film and cardboard from the grille and doors or door frame, depending on your model.
4. Install the shelves and bins in the refrigerator and freezer compartments.
5. The controls are preset at the factory to the midpoint setting. Check that the compressor is operating properly and that all the lights are working.
6. Flush the water system before use. See "Water System Preparation."

To get the most efficient use from your new built-in refrigerator, read the Use & Care Guide. Keep Installation Instructions and Use & Care Guide near the built-in refrigerator for easy reference.

AB RY

APR 25 2024

AV2-14



Reza

Prepared by
Ravneet Raghav
APPLIANCE CANADA LTD
ravneet_raghav@hotmail.com
(905) 660-2424 815

Whirlpool
CANADA
APR 23 2024 PV2-14 AB

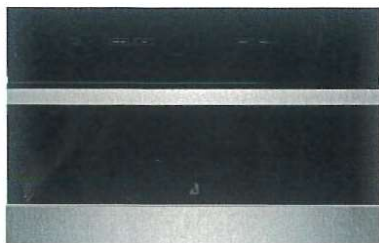




Jennair® NOIR™ 30 Built-In Microwave Oven with Speed-Cook

JMC2430LM

Let your appetite run wild with microwave and convection energy. With curated recipes and full-color doneness images, an intelligent culinary experience awaits your touch.



Available Finishes/Colours

JMC2430LM
Floating Glass Black

Manuals & Literature:

[Dimension Guide](#) [Installation Instructions](#)
[Use and Care](#) [Warranty](#)

Top Features

Speed-Cook

Renounce accepted limitations of the microwave. Three potent methods converge to deliver convection's steady heat, microwave speed and broiled caramelization in each oven-caliber bite.

4.3-Inch Full Color LCD Display

A highly interactive, full-color LCD touchscreen is packed with dynamic features that allow you to navigate effortlessly through settings and cooking options including temperature and cooking mode.

Stainless Steel Microwave Interior

Wrapped in luminous steel, intrinsic beauty is reflected in every corner.

Sensor Cooking

This intuitive sensor detects humidity released by food as it cooks, determining the precise cooking time and power level for optimal doneness of each dish.

Dimensions

Depth	24.75
Height	19.88
Width	29.75

Microwave Details

Cooking Power Watts	900
Cavity Finish	Stainless
Convection	Yes
Convection Power Watts	1,200
Grill	Yes
Grill Power Watts	1,600
Number Of Racks	1
Turntable	Stoppable
Turntable Diameter Size In	14.13

Compatibility

Works With

Controls

Control Location	Top
Control Type	Electronic Touch
Display Color	Colored

Specifications

Country Of Origin	USA
Extended Service Plan Parent	EW09IW2Y
Add 30 Seconds	Yes
Control Lock	Yes
Soften Melt	Yes
Convect	Yes
Grill	Yes
Popcorn	Yes
Defrost	Yes
Keep Warm	Yes
Steam Cook	Yes

Electrical

Amps	20
Volts	240/208
Hz	60

APPLIANCE CANADA LTD
Ravneet Raghav
ravneet_raghav@hotmail.com

91 Caldari Road
Concord, ON L4K 3Z9
(905) 660-2424 x 815

Page 4 of 8

Appliance Canada
For Your Home For Your Life

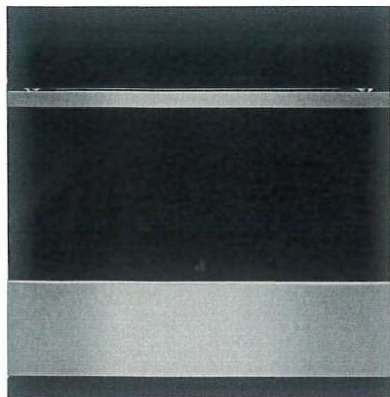
Because Whirlpool Corporation policy includes a continuous commitment to improve our products, we reserve the right to change materials and specifications without notice. Dimensions are for planning purposes only. For complete details, see Installation Instructions packed with product. Specifications subject to change without notice.

APR 23 2024

APR

APR

PV2-14



Available Finishes/Colours



JJW2430LM
Floating Glass Black

Manuals & Literature:

- [Dimension Guide](#)
- [Installation Instructions](#)
- [Use and Care](#)
- [Warranty](#)

Jennair® NOIR™ 30 Single Wall Oven

JJW2430LM

The oven's single-fan MultiMode® Convection system transforms prepped food and ingredients into delicious dinners. Use My Creations mode to curate your own recipe presets on the full-color display for an intuitive, guided culinary experience that's quieter than the leading luxury wall oven brand.* *Among 30, non-steam, single wall ovens.

Top Features

MultiMode® Convection System

Steady heat is circulated by whirling metal blades, weaving around every flat tine. Weld your cooking prowess from marbled meats to succulent roasts.

4.3-Inch Full colour LCD Display

A highly interactive, full-colour LCD touchscreen is packed with dynamic features that allow you to navigate effortlessly through settings and cooking options including temperature and cooking mode.

Quieter Than the Leading Luxury Wall Oven Brand

Quieter Than the Leading Luxury Wall Oven Brand

Glide Rack

Smooth moves. Glides in and out fluidly and quietly, even when fully loaded.

Dimensions

Depth	23.25
Height	29.88
Width	30.0

Electrical

Volts	240/208
Hz	60

Controls

Control Type	Manual
Display Color	Full Color

Exterior

Handle Color	Stainless Steel
Handle Material	Stainless Steel

Specifications

Country Of Origin	USA
Optional Accessories	W11256305
Extended Service Plan Parent	EW10IW1Y
Sabbath Mode	Yes

Features

Power On Indicator Light	Yes
Language Conversion	English/French

Configuration and Overview

Fuel Type	Electric
-----------	----------

Configuration

Oven Configuration	Single Oven
--------------------	-------------

Electrical

Amps	20
Power Cord Included	No

Details

Bake Element Power	2800W/2427W
Broiler Element Power	4000W
Convection Element Power Watts	3,200



Panel Ready Fully Integrated Dishwasher with 3rd Level Rack with Wash

JDAF5924RX

JennAir® Panel Ready Fully Integrated Dishwasher with 3rd Level Rack with Wash

Available Finishes/Colours

JDAF5924RX
Panel Ready

panel

Manuals & Literature:

[Dimension Guide](#)

[Energy Guide](#)

[Use and Care](#)

[Warranty](#)

Top Features

Dimensions

Depth	21.63
Height	32.31
Width	23.56

Compatibility

Connectivity

Works With

Controls

Automatic Temperature Controls	Yes
Control Location	Top
Control Type	Electronic
End Of Cycle Signal	Yes

Specifications

Country Of Origin	Poland
-------------------	--------

Cycles and Options

Dishwasher Cycle Selections	Cookware; Crystal; Normal; Refresh; Sensor
-----------------------------	--

Cycles

Number Of Wash Cycles	6
-----------------------	---

Details

Drying System Type	Open Door System
Hoses Included	Drain Hose
Interior Light	Yes
Number Of Racks	3
Number Of Washarms	3
Rack Material	Nylon
Tub Material	Stainless Steel
Tub Style	Built-in Tall Tub 24in.
Wash System	Filter
Wash System Type	Removable Filter
Water Filtration	Yes

APPLIANCE CANADA LTD
Ravneet Raghav
ravneet_raghav@hotmail.com

91 Caldari Road
Concord, ON L4K 3Z9
(905) 660-2424 x 815

Page 5 of 8

Appliance Canada
For Your Home, For Your Life

Because Whirlpool Corporation policy includes a continuous commitment to improve our products, we reserve the right to change materials and specifications without notice. Dimensions are for planning purposes only. For complete details, see Installation Instructions packed with product. Specifications subject to change without notice.

APR 23 2024

AS RV PV2-14



Jennair® NOIR™ 24 Built-In Undercounter Beverage Center, Right Swing

JUBFR242HM



Available Finishes/Colours

JUBFR242HM
Stainless Steel

Manuals & Literature:

[Dimension Guide](#)
[Use and Care](#)

[Energy Guide](#)
[Warranty](#)

no panel

All access. Thick glass shelves with daring Obsidian interiors bring cool where you need it, whether in the undercounter space of a butler's pantry, prep area, bar or entertainment room. Set independent temperature zones with presets curated to your lifestyle and your space.

Top Features

Daring Obsidian Interior

Inspired by volcanic glass, this dark finish erupts with reflective, high-contrast style. Let the object of your desire emerge like vibrant art, begging to be consumed.

Emotive Controls

Hold sway over every zone. Let your light-guided touch coax out the flavors of beverages, spirits and beyond.

Glass Shelves

Gaze through platforms of glass wrapped in unyielding shelf frames.

UV-Resistant Low-E Thermal Glass

Sustain what satiates. Double-paned glass helps filter out ultraviolet light and helps reject temperature swings to reserve the finest tastes for your discerning palate.

Dimensions

Depth	23.94
Height	34.13
Width	23.88

Controls

Control Location	Interior
Control Type	Electronic
Control Lockout	No
Door Ajar Open Alarm	Yes
Max Cool Fast Cool	Yes
Sabbath Mode	Yes
Auto Defrost	Yes
Cooling On Off	Yes
Number Of Temperature Controlled Zones	2

Details

Interior Light	Yes
Number Of Racks	2
Liner Finish	Plastic
Number Of Shelves	2
Rack Front Material	Wood
Zone 1 Temperature Range	33F to 40F
Zone 2 Capacity	13 Bottles
Zone 2 Temperature Range	42F to 64F

Electrical

Amps	20
Volts	115

Exterior

Handle Material	Metal
Handle Type	Reach Through Handle
Window	Yes
Cabinet Color	Black
Cabinet Finish	Textured

APPLIANCE CANADA LTD
Ravneet Raghav
ravneet_raghav@hotmail.com

91 Caldari Road
Concord, ON L4K 3Z9
(905) 660-2424 x 815

Page 6 of 8

Appliance Canada
For Your Home. For Your Life.

Because Whirlpool Corporation policy includes a continuous commitment to improve our products, we reserve the right to change materials and specifications without notice. Dimensions are for planning purposes only. For complete details, see Installation Instructions packed with product. Specifications subject to change without notice.

APR 23 2024

AB

Ry

PV2-14



Jennair® 42 Panel-Ready Built-In French Door Refrigerator

JF42NXFXDE

Featuring the exclusive Jenn-Air® Obsidian interior, this bottom-freezer refrigerator offers a fully flush, fully integrated design, distinct fresh- and frozen-food climates, and Produce Preserver to help keep fruits and vegetables at optimum freshness.



Available Finishes/Colours

JF42NXFXDE
Panel Ready

panels-

Manuals & Literature:

[CAD Image](#)

[Dimension Guide](#)

[Energy Guide](#)

[Installation Instructions](#)

[Use and Care](#)

[Google Sketch](#)

[Warranty](#)

Top Features

Daring Obsidian Interior

Inspired by volcanic glass, this industry-exclusive dark finish draws attention with high-contrast style. Fine foods and fresh produce emerge like vibrant art, with LED lighting showcasing your ingredients against the alluring interior.

Multi-Point Cinematic Lighting

Illuminate food items against the Daring Obsidian Interior. Breathtaking Multi-Point Cinematic Lighting ramps up in intensity as you open the door, acting as a lightbox to increase visibility and highlight your ingredients.

Fully Flush, Fully Integrated Design

This integrated built-in refrigerator fits beautifully into any decor, blending into custom cabinetry with a truly seamless appearance, reflecting your appreciation for the fine details of design. Must be installed in a 25" deep cabinet to achieve the fully flush look.

Dimensions

Depth	24.0
Height	84.0
Width	41.75

Controls

Control Location	Interior Up Front
Control Type	Electronic
Control Lockout	N/A
Door Ajar Open Alarm	Yes
Max Cool Fast Cool	Yes
Sabbath Mode	Yes
Water Filter Indicator Reset	Yes

Specifications

Country Of Origin	USA
-------------------	-----

Specifications

Optional Accessories	W11194769, W11296021, W10663564, EDR3RXD1B, W10311524, JBFFS42NHL, JBFFS42NHL
----------------------	---

Required Accessories	JBFFS42NHL, JBFFS42NHL, W11194769, W11296021
----------------------	---

Extended Service Plan Parent	EW13IW2Y
------------------------------	----------

Fingerprint Resistant	No
-----------------------	----

Electrical

Amps	20
Volts	115

AHAM Volumes And Shelf Area

Freezer Volume Cu Ft	6.42
Refrigerator Volume Cu Ft	17.75
Total Volume Cu Ft	24.2

Configuration

Installation Configuration	Built-in
----------------------------	----------

APPLIANCE CANADA LTD
Ravneet Raghav
ravneet_raghav@hotmail.com

91 Caldari Road
Concord, ON L4K 3Z9
(905) 660-2424 x 815

Page 2 of 8

Appliance Canada
For Your Home. For Your Life.

Because Whirlpool Corporation policy includes a continuous commitment to improve our products, we reserve the right to change materials and specifications without notice. Dimensions are for planning purposes only. For complete details, see Installation Instructions packed with product. Specifications subject to change without notice.

APR 23 2024

APR 23 2024
PV2-14

42 Refrigerator Armoire Style Door Panel Kit, Obsidian

W10663564

This Armoire-Style Refrigerator Door Panel is a 42 obsidian/black replacement part for your fully integrated built-in refrigerator. Easy to install, aesthetically pleasing, and built to last, this is an accessory that can be used across several Jenn-Air models; check to see if your model number is compatible. Installing this accessory will require basic hand tools and novice installation experience. Remember to unplug the appliance or shut off the house circuit breaker before installing this part..

Available Finishes/Colours



W10663564
Other

Manuals & Literature:



[Dimension Guide](#)



[Installation Instructions](#)



[Use and Care](#)

Top Features

This product is a Factory Certified Accessory. These three words represent quality parts and accessories designed specifically for your appliance. Time tested engineering that meets our strict quality specifications

These three words represent quality parts and accessories designed specifically for your appliance. Time tested engineering that meets our strict quality specifications

Package contains (1) 42" Refrigerator Door Panel Kit, Obsidian

Package contains (1) 42" Refrigerator Door Panel Kit, Obsidian

Tools Needed: Multi screwdriver

Tools Needed: Multi screwdriver

30-Day Return Policy

30-Day Return Policy

Specifications

Country Of Origin

USA

APPLIANCE CANADA LTD
Ravneet Raghav
ravneet_raghav@hotmail.com

91 Caldari Road
Concord, ON L4K 3Z9
(905) 660-2424 x 815

Page 7 of 8

Appliance Canada
For Your Home. For Your Life.

Because Whirlpool Corporation policy includes a continuous commitment to improve our products, we reserve the right to change materials and specifications without notice. Dimensions are for planning purposes only. For complete details, see Installation Instructions packed with product. Specifications subject to change without notice.

APR 23 2024

AB

Ry/PV2-14

Steam Dryer Hose Kit

W10044609A

This Steam Dryer Hose Kit includes the hoses and adapters needed to replace your existing steam hose assembly. This kit includes (1) brass adapter, (1) 3' hose, (1) 5' hose and (4) o-rings. This is a universal accessory that can be used across several brands; check to see if your model number is compatible. Replacing this accessory will require basic hand tools, some disassembly of the appliance and novice repair experience.




Available Finishes/Colours



W10044609A
Other

Manuals & Literature:

 [Warranty](#)

Top Features

This product is a Factory Certified Accessory. These three words represent quality parts and accessories designed specifically for your appliance. Time tested engineering that meets our strict quality specifications

These three words represent quality parts and accessories designed specifically for your appliance. Time tested engineering that meets our strict quality specifications

Whirlpool Genuine OEM Parts & Accessories are designed specifically for your appliance, meet tested engineering standards, and are crafted to ensure the quality of your appliance.

Whirlpool Genuine OEM Parts & Accessories are designed specifically for your appliance, meet tested engineering standards, and are crafted to ensure the quality of your appliance.

Package contains (1) Steam Dryer Hose Kit

Package contains (1) Steam Dryer Hose Kit

Accessory W10044609A replaces 211053, 3389955, 4319131, 4392905, 4392905R, 661592, 687104, 694044, 694045, PS407504 and W10830966

Accessory W10044609A replaces 211053, 3389955, 4319131, 4392905, 4392905R, 661592, 687104, 694044, 694045, PS407504 and W10830966

Specifications

Country Of Origin

USA

Part Replacement

This Part Is A Replacement For The Following Part Numbers

W10434773, W10362238,
W10206708, W10044609,
W10473735, W10676169

APPLIANCE CANADA LTD
Ravneet Raghav
ravneet_raghav@hotmail.com

91 Caldari Road
Concord, ON L4K 3Z9
(905) 660-2424 x 815

Page 8 of 8

Appliance Canada
For Your Home For Your Life

Because Whirlpool Corporation policy includes a continuous commitment to improve our products, we reserve the right to change materials and specifications without notice. Dimensions are for planning purposes only. For complete details, see Installation Instructions packed with product. Specifications subject to change without notice.

APR 23 2024

AB R1

PV2-14

SRT366



FEATURES

- Rigorously tested for decades of use
- Exceptional support from our Customer Care team in Madison
- Signature red infinite control knobs
- Dual-stacked burners go from 20,000 Btu down to a mere breath of flame
- Heavy-gauge stainless steel
- Spark ignition system re-ignites if flame goes out
- Continuous cast-iron grates for easy movement of pots and pans
- 6 dual-stacked, seamless burners

ACCESSORIES

- 2-Burner Wok Grate
- Filler Trim
- S-Grates
- Stainless steel, brass or chrome bezels
- High altitude conversion kit
- 5" and 10" stainless steel risers, and 20" riser with shelf
- Signature red, black or stainless steel control knobs

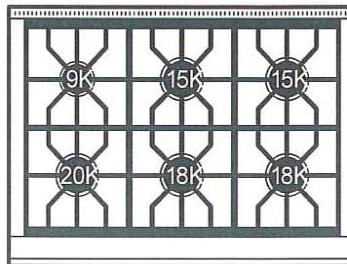
Accessories available through an authorized dealer.
For local dealer information, visit subzero-wolf.com/locator.



KNOB OPTIONS



TOP CONFIGURATION



RANGETOP SPECIFICATIONS

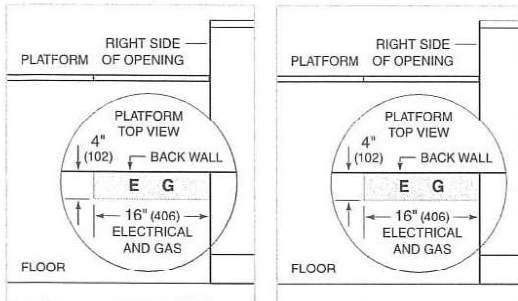
- 1 - 9,200 Btu Burner
- 2 - 15,000 Btu Burners
- 2 - 18,000 Btu Burners
- 1 - 20,000 Btu Burner

PRODUCT SPECIFICATIONS

Model	SRT366
Dimensions	35 7/8"W x 8 1/2"H x 28 1/2"D
Weight	220 lbs
Electrical Supply	110/120 VAC, 60 Hz
Electrical Service	15 amp dedicated circuit
Gas Supply	3/4" ID line
Gas Inlet	1/2" NPT female
Receptacle	3-prong grounding-type

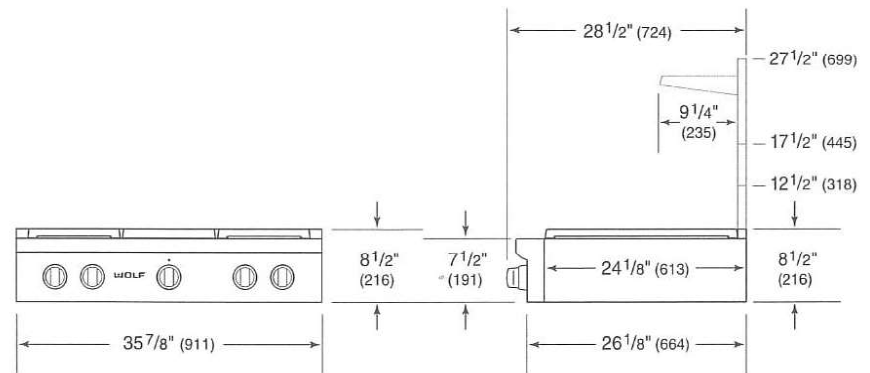
ELECTRICAL

GAS

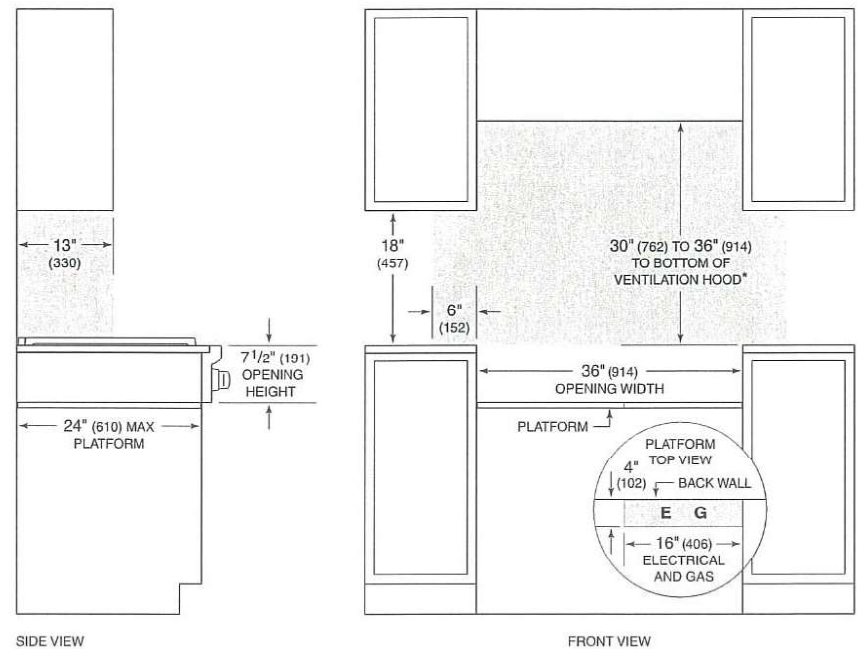


NOTE: Dimensions in parenthesis are in millimeters unless otherwise specified

DIMENSIONS



STANDARD INSTALLATION

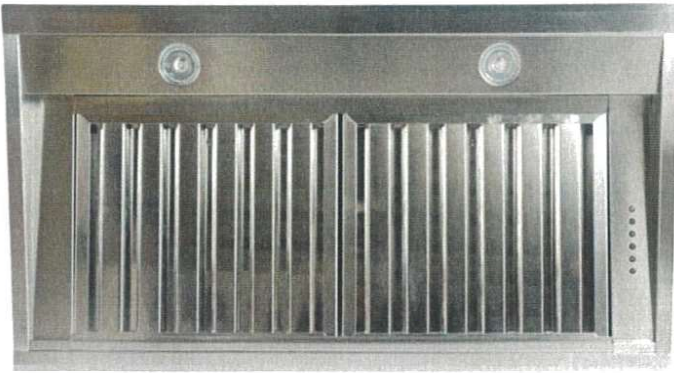


*Without ventilation hood, 36" (914) minimum clearance countertop to combustible materials, 44" (118) for charbroiler.

NOTE: Shaded area above countertop indicates minimum clearance to combustible surfaces, combustible materials cannot be located within this area.

Electrical and gas supply located through bottom of platform.

For island installation, 12" (305) minimum clearance back of range to combustible rear wall above countertop.



SU901

SU901

- Dual Motor (1100 CFM) - EBM
- Pressure: 800 Pa
- Noise level: 66 dBA/5.1 sones

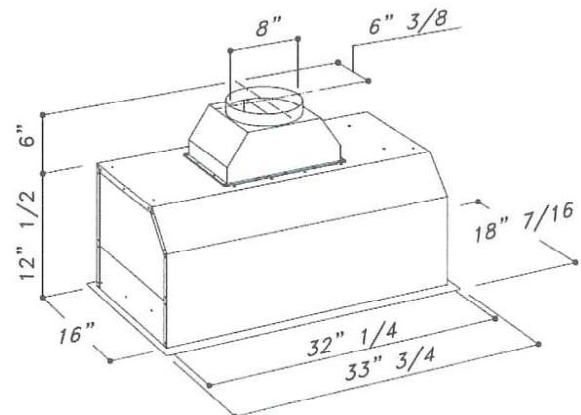


- Lighting: 2x20W Dichroic lamps



- Control panel: 4 speed push-button + timer delay off timer + light switch

- grease filter: commercial style baffle filters
- Cut Out: 32" 13/32 x 16" 3/16



Sirius

APR 23 2024

AR

Ry

PV2-14

LG LAUNDRY

WM6700HBA

5.8 cu.ft. Front Load Washer
with AI DD™ 2.0 and LCD Knob

LCD Knob with Sleek & Modern Design

AI DD™ 2.0 with fabric and soil level sensors

ezDispense™ Automatic Dispenser

TurboWash™ 360

Steam Technology (Asthma Canada Certified)

ThinQ® Technology

Energy Star® Certified

AVAILABLE COLOURS



BLACK STEEL



Enjoy new ways to control your
home with LG smart appliances

- LG ThinQ™**
- Start the laundry while you're out shopping
 - Get alerts when the cycle is finished
 - Works with the LG ThinQ® app



works with the
Google Assistant



works with
alexa

SUMMARY

Type	Front Load Washer
Capacity (cu. ft.)	5.8
Matching Electric Dryer	DLEX6700B
Color	Black Steel (B)

APPEARANCE

LCD Display	Yes
Touch Buttons	Yes
Dial-A-Cycle™	Yes

ENERGY

ENERGY STAR® Most Efficient	Yes
ENERGY STAR® Certified	Yes
CEE Tier	Advanced
IMEF	3.1
IWF	2.9

WASH PROGRAMS

No. of Programs	25
-----------------	----

Wash Programs	Normal, AI Wash, Bedding, Delicates, Towels, Quick Wash, Heavy Duty, Allergiene™, Perm. Press, Tub Clean, Bright Whites™, Sanitary, Rinse + Spin, Spin Only, Hand/Wool, Active Wear, Swimwear, Kids Wear, Jeans, Dresses, Color Care, Sweat Stains, Small Load, Large Load, X Large Load
---------------	--

WASH OPTIONS

No. of Options	19
----------------	----

Options	TurboWash™, Steam, Fresh Care, Pre-Wash, Remote Start, Delay Wash, Wi-Fi, Add Item, Extra Rinse, Control Lock, Drum Light, ColdWash, Spin Only, Detergent Level, Softener Level, Signal, Cycle List Edit, Cycle Optimization, Softener Tank Use
---------	---

WASH DETAILS

No. of Wash/Rinse Temps	5
Wash/Rinse Temps	Extra Hot, Hot, Warm, Cold, Tap Cold

No. of Spin Speeds	5
--------------------	---

Spin Speeds	Extra High, High, Medium, Low, No Spin
-------------	--

Max RPM	1300
---------	------

Water Levels	Load Sensing
--------------	--------------

No. of Soil Levels	5
--------------------	---

FABRIC CARE FEATURES

AI DD™	Yes
TurboWash™ 360 Technology	Yes
Steam Technology	Yes
Allergiene™ Cycle	Yes
Sanitary Cycle	Yes
ColdWash™ Option	Yes
Soil Level Sensor	Yes

CONVENIENCE FEATURES

Vibration sensing (Cabinet Vibration Sensor)	Yes
TrueBalance™ Anti-Vibration System	Yes

4 Tray Dispenser	ezDispense Cartridge (Detergent, Softener), Main Wash, Bleach (Cup)
------------------	---

End of Cycle Signal	Yes
---------------------	-----

LoadSense	Yes
-----------	-----

Control Lock	Yes
--------------	-----

Auto Suds Removal	Yes
-------------------	-----

Leveling Legs	4 Adjustable Legs
---------------	-------------------

Drumlight	Yes
-----------	-----

ThinQ® SMART FEATURES

SmartDiagnosis™ (v3.0)	Yes
Wi-Fi	Yes
Remote Start and Cycle Monitor	Yes
Energy Monitoring	Yes
Tub Clean Coach	Yes

MOTOR AND AGITATOR

Motor Type	Inverter Direct Drive Motor
------------	-----------------------------

Axis	Horizontal
------	------------

MATERIALS AND FINISHES

NeverRust™ Stainless Steel Drum	Yes
Cabinet	Painted Steel
Control Panel	Painted Steel
Top Plate	Painted Steel
Door / Rim	Glass / Chrome
Door Cover	Tempered Glass Door
All Available Colors	Black Steel (B)

CERTIFICATION

Asthma Canada	Yes
---------------	-----

POWER SOURCE

Ratings	UL Listed
Electrical Requirements	120V, 10 Amps
Type	Electric

OPTIONS/ACCESSORIES

Pedestal	WDP6B
----------	-------

Pedestal (WxHxD)	27" x 13 5/8" x 28" (43 7/8" D with door open)
------------------	--

LG Sidekick™ Pedestal Washer	WD300CB
------------------------------	---------

LG Sidekick™ Pedestal Washer (WxHxD)	27" x 14 1/8" x 30 3/4" (50 1/2" D with drawer open)
--------------------------------------	--

Stacking Kit	KSTK4
--------------	-------

DIMENSIONS

Product (WxHxD)	27" x 39" x 33 1/4"
Depth with Door Open	(55" D with door open)
Carton (WxHxD)	29 3/4" x 43 1/8" x 33 7/8"
Weight (Product/Carton)	209.5 / 222.7 lbs.

LIMITED WARRANTY

Parts and Labor	1 Year
Direct Drive Motor	10 Years
Drum	3 Years

UPC CODES

WM6700HBA (Black Steel)	195174037058
-------------------------	--------------

APR 23 2024

AB

Rv

PV2-14

LG LAUNDRY

DLEX6700B / DLGX6701B

7.4 cu. ft. Ultra Large Capacity Smart Front Load
 Dryer with TurboSteam™ and AI Sensor Dry™

7.4 cu. ft. Ultra Large Capacity
 LCD Display and Dial-A Cycle™ Knob with Touch Buttons
 TurboSteam™ Technology
 AI Fabric Sensor & Smart Pairing™
 LG ThinQ® Technology with ThinQ Care
 Wrinkle Care Option
 Reversible Door
 Sensor Dry System
 FlowSense™ Duct Clogging Indicator
 NeveRust™ Stainless Steel Drum
 Tempered Glass Door
 ENERGY STAR® Certified

AVAILABLE COLORS



Proactive Smart Alerts to Keep Your Appliances Running Smoothly

ThinQ Care

- Preventative Alerts help you stay a step ahead of potential issues to find proactive solutions before problems arise.
- Avoid preventable repairs and service calls with real-time diagnostics for a hassle-free experience.
- Integrated within LG's ThinQ app—a smart home hub for managing your smart devices and appliances.



SUMMARY

Type	Front Load Dryer
Vent Type	Vented
Dryer Type	Electric, DLEX6700B Gas: DLGX6701B
Capacity	7.4 cu. ft.
Matching Washer	WM6700HBA
Sensor Dry	Yes
Steam	Yes
Color	Black Steel (B)

APPEARANCE

LCD Display	Yes
Touch Buttons	Yes
Dial-A-Cycle™	Yes

DRYER PROGRAMS

No. of Programs	23
Programs (Sensor Dry)	Normal, AI Dry, Bedding, Delicates, Towels, Quick Dry, Timed Dry, Antibacterial, Perm. Press, SteamFresh™, Heavy Duty, Air Dry, Steam Sanitary™, Super Dry, Active Wear, Jeans, Blanket Refresh, Low Temp Dry, Overnight Dry, Easy Ironing, Small Load, Large Load Dry, X Large Load Dry
No. of Options	11
Options	Cycle Optimization, Damp Dry Signal, Wrinkle Care, Control Lock, Wi-Fi, Energy Saver, TurboSteam™, Reduce Static, Remote Start, Drum Light, Signal
Temperature Settings	High, Med. High, Medium, Low, Ultra Low
Drying Levels	Very Dry, More Dry, Normal Dry, Less Dry, Damp Dry
Manual Dry Times	10 min - 100 min (Every 10 min)

FABRIC CARE FEATURES

AI Sensor Dry™	Yes
Sensor Dry	Yes
Precise Temperature Control with Variable Heater	Yes
Steam	TurboSteam™

CONVENIENCE FEATURES

3 Minute Installation Check	Yes
End of Cycle Signal	Yes
Drum Light (Door Open)	Yes
Reversible Door	Yes
FlowSense™ Duct Clogging Indicator	Yes
Wrinkle Care Option	Yes
Control Lock	Yes
Venting Option	Electric: 4 Way Venting / Gas: 3 Way Venting
4 Adjustable Legs	Yes
Remaining Time Display / Status Indicator(s)	Yes

ThinQ® TECHNOLOGY

ThinQ Care	Yes
SmartDiagnosis™ (v3.0)	Yes
Wi-Fi	Yes
Remote Start and Cycle Monitor	Yes
Energy Monitoring	Yes
ENERGY	
ENERGY STAR® Certified	Yes
CEF	Electric: 3.94 / Gas: 3.49

MATERIALS AND FINISHES

NeveRust® Stainless Steel Drum	Yes
Cabinet	Painted Steel
Door	Tempered Glass Door
All Available Colors	Black Steel (B)

POWER SOURCE

Ratings	CSA Listed
Electrical Requirements	Electric: 240V, 30 Amps / Gas: 120V, 15 Amps
Type	Electric, Gas
BTU Rating	Gas: 20,000

OPTIONS

LP Conversion Kit	383EEL3002D
Side Venting Kit	3911EZ9131X
Drying Rack	3750EL1001A
Pedestal	WDP6B
Pedestal (WxHxD)	27" x 13 5/8" x 28" (43 7/8" D with door open)

DIMENSIONS

Product (WxHxD)	27" x 39" x 30 1/8"
Depth with Door Open	51 3/8"
Carton (WxHxD)	29 5/8" x 43 5/16" x 31 9/16"
Product Weight (lbs.)	Electric: 123.7 lbs. / Gas: 134 lbs.
Carton Weight (lbs.)	Electric: 135.1 lbs. / Gas: 145.7 lbs.

LIMITED WARRANTY

Parts & Labor	1 Year
Drum	3 Years

UPC CODES

DLEX6700B (Black Steel)	195174036976
DLGX6701B (Black Steel)	195174036983

APR 23 2024

APB

Riv

PV2-14