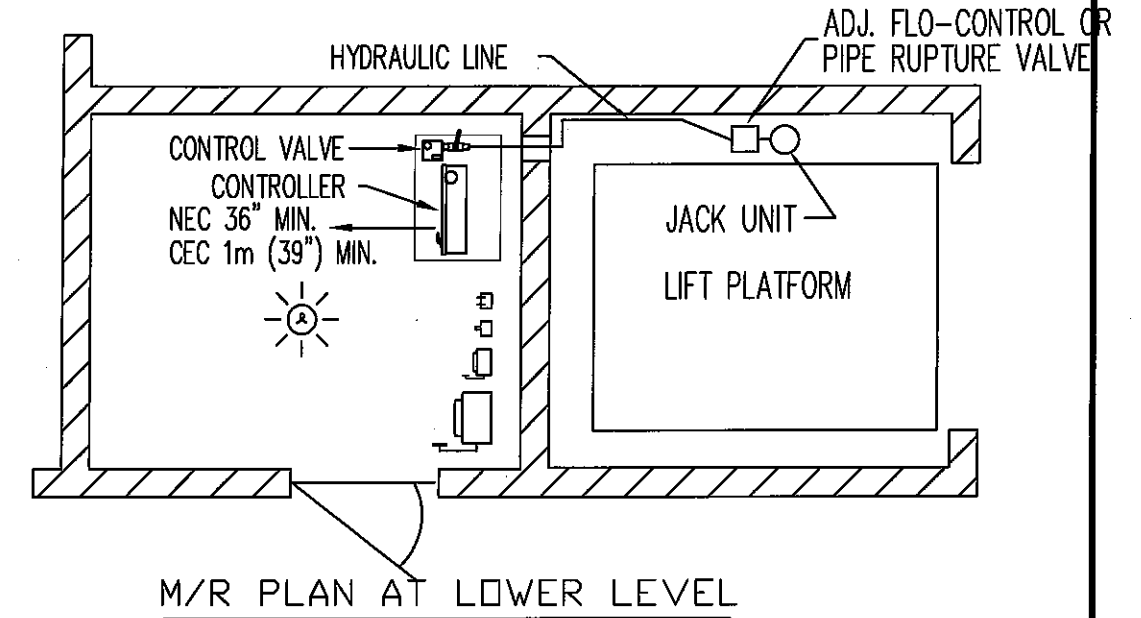
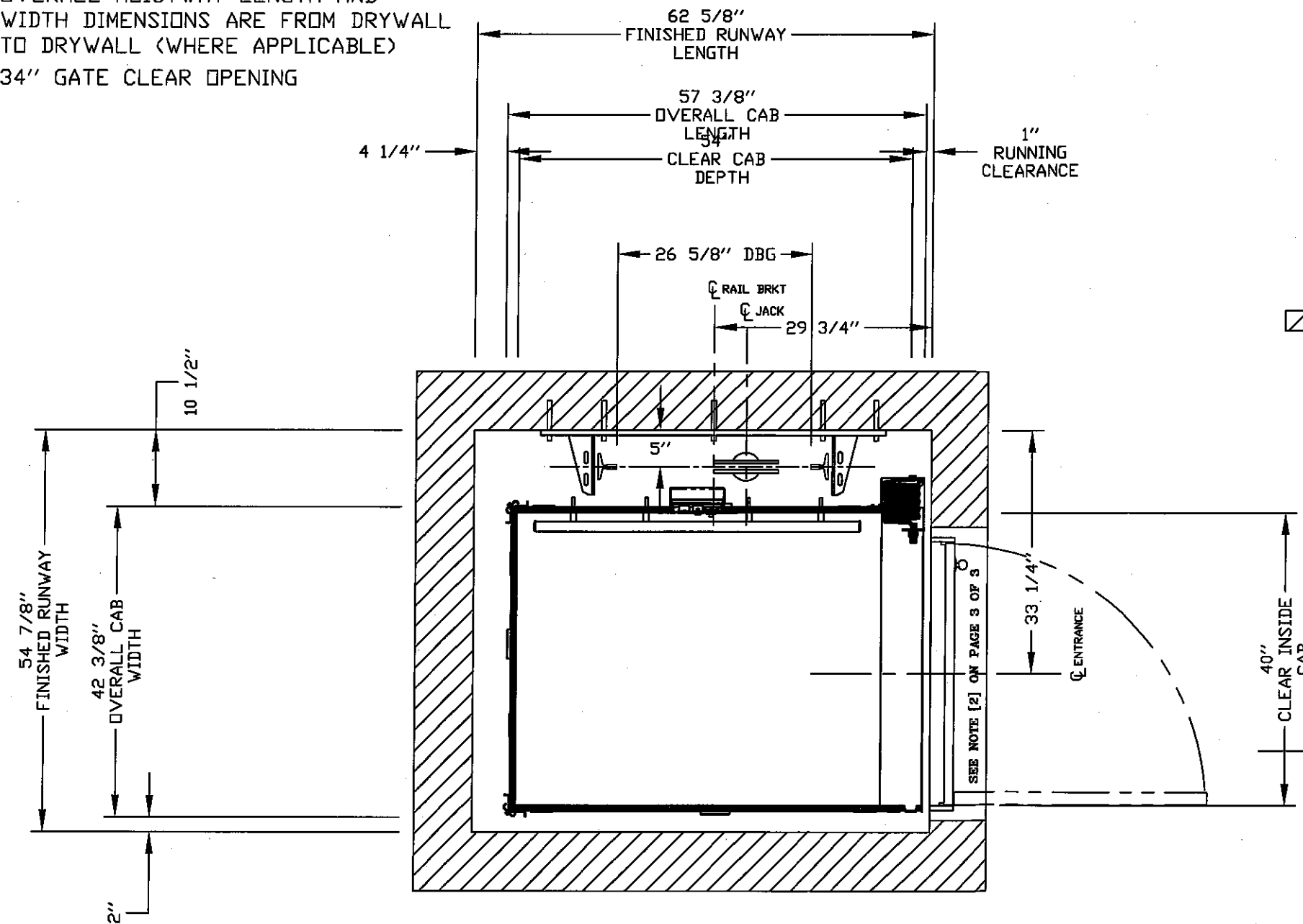


PLEASE NOTE:

- OVERALL HOISTWAY LENGTH AND WIDTH DIMENSIONS ARE FROM DRYWALL TO DRYWALL (WHERE APPLICABLE)
- 34" GATE CLEAR OPENING



**PRELIMINARY DRAWING ONLY
DRAWING APPROVAL:**

THIS DRAWING REFLECTS OUR INTERPRETATION OF THE INFORMATION PROVIDED BY THE DEALER ON THE ORDER FORM. THIS INFORMATION IS THE DEALER'S RESPONSIBILITY, AND IS THE BASIS FROM WHICH THIS LIFT IS DESIGNED AND MANUFACTURED. PLEASE INDICATE THE REQUESTED ACTION BY CHECKING ONE OF THE FOLLOWING BOXES AND SIGNING BELOW TO AUTHORIZE COMPLETION OF THIS ORDER.

- ☐ APPROVED WITH NO EXCEPTIONS
MANUFACTURE PRODUCT AS PER DRAWING
- ☐ APPROVED WITH EXCEPTIONS, NO REAPPROVAL
REQUIRED
MAKE CHANGES AS NOTED, NO REAPPROVAL DRAWING REQUIRED
- ☐ CHANGE AS NOTED, REAPPROVAL REQUIRED
MAKE CHANGES AS NOTED, SEND CORRECTED DRAWING FOR
REAPPROVAL BEFORE MANUFACTURE

SIGNATURE: _____ DATE: _____

CHANGES REQUEST:

1. _____
2. _____
3. _____
4. _____

CAUTION: ONCE THE DRAWING IS APPROVED, JOB CANCELLATION FEES WILL APPLY

PLAN VIEW

OFFICE USE ONLY:	
CONFIGURATION VERSION STAMP:	0.0
MODULE VERSION STAMP:	I-S-7185

CUSTOMER:	SAVARIA SIS
PROJECT:	GEORGIAN 4 - LOT 3
ADDRESS:	OAKVILLE, ONTARIO

DATE:	11/22/17
REVISION DATE:	04/18/19
COMPLETED BY:	RENEE BAWKIN

Part No.	INFINITY
Variant No.	109752
JOB No.	P-000000
SHEET No.	1 OF 3

PROVISIONS BY OTHERS

*GENERAL

HOISTWAY- THE HOISTWAY MUST BE IN ACCORDANCE WITH NATIONAL CAN/CSA (SEE APPLIED CODE), ALL PROVINCIAL AND LOCAL CODES.

PLUMB HOISTWAY- DUE TO CLOSE RUNNING CLEARANCES OWNER/AGENT MUST ENSURE THAT HOISTWAY AND PIT (WHERE PROVIDED) ARE LEVEL, PLUMB AND SQUARE AND ARE IN ACCORDANCE WITH THE DIMENSIONS ON THESE DRAWINGS.

MINIMUM OVERHEAD CLEARANCE- OWNER/AGENT MUST ENSURE MINIMUM OVERHEAD CLEARANCE IS IN COMPLIANCE WITH CODES.

CONSTRUCTION SITE- OWNER/AGENT TO PROVIDE ALL MASONRY, CARPENTRY AND DRYWALL WORK AS REQUIRED AND SHALL PATCH AND MAKE GOOD (INCLUDING FINISH PAINTING) ALL AREAS WHERE WALLS/FLOORS MAY REQUIRE TO BE CUT, DRILLED OR ALTERED IN ANY WAY TO PERMIT THE PROPER INSTALLATION OF THE LIFT.

DIMENSIONS

CONTRACTOR/CUSTOMER TO VERIFY ALL DIMENSIONS AND REPORT ANY DISCREPANCIES TO OUR OFFICE IMMEDIATELY.

*STRUCTURAL

FLOOR/SUPPORT WALL LOADS- CONTRACTOR TO ASSURE

THAT BUILDING AND SHAFT WILL SAFELY SUPPORT ALL LOADS IMPOSED BY THE LIFT EQUIPMENT. REFER TO THE TABLES ON THIS DRAWING FOR LOADS IMPOSED BY THE EQUIPMENT.

DOORS- SUITABLE LINTELS MUST BE PROVIDED BY OWNER/AGENT.

DOOR FRAMES ARE NOT DESIGNED TO SUPPORT OVERHEAD WALL LOADS.

ALL FULL HEIGHT DOORS MUST BE ALIGNED WITH THE DOOR CENTER LINE. DOOR WITH THE CORE IS BETTER THAN THE HOLLOW DOOR.

NOTE(2)- DISTANCE BETWEEN THE HOISTWAY SIDE OF THE LANDING DOOR AND THE CAR DOOR OR GATE SHALL NOT EXCEED 4"(102 MM) USING THE CODE MEASURING TOOL. FOR ACCORDION (PANEL FOLD) GATES, YOU MUST HAVE FLUSH DOORS (NOT THE 3/4" SETBACK). 3/4" SETBACK IS POSSIBLE ONLY WHEN THE CAR DOORS ARE BIFOLD OR SLIM DOORS. RECOMMEND SOLID CORE DOOR SLAB.

ENTRANCE ASSEMBLIES- ENTRANCE ASSEMBLIES MUST BE ADJUSTED TO ALIGN WITH PLATFORM AND INTERLOCK EQUIPMENT. OTHERS TO ALLOW AN ADEQUATE ROUGH OPENING.

RETURN WALLS- RETURN WALLS AT ENTRANCES MUST BE BUILT-IN BY OTHERS AFTER ENTRANCE ASSEMBLIES ARE IN PLACE. ENTRANCE ASSEMBLY MUST BE SECURELY FASTENED TO WALLS BY ELEVATOR CONTRACTOR.

*MACHINE ROOM

LOCATION / ACCESS- MACHINE ROOM LOCATED AT THE LOWEST LEVEL ADJACENT TO HOISTWAY, UNLESS SHOWN OTHERWISE ON THE LAYOUT DRAWINGS. FIELD ADJUSTMENT BY INSTALLER MAY BE NECESSARY TO MEET JOB SITE CONDITIONS OR REGULATIONS. MACHINE ROOM DOOR IS TO BE LOCKABLE AND IS TO MEET THE REQUIREMENTS OF THE AUTHORITY HAVING JURISDICTION.

SLEEVES FOR OIL & ELECTRIC LINES- FROM MACHINE ROOM TO RUNWAY AS REQUIRED. (POSITION PER INSTALLERS INSTRUCTIONS).

	DISCONNECT SIZE	TIME DELAY FUSE SIZE	VOLTS	PHASE	AMPERAGE
MOTOR & EQUIP.	30 AMPS	30 AMPS	230 volt	Single Phase	13.20 AMPS
CAB LIGHTS	15 AMPS	15 AMPS	115 V	1	

*ELECTRICAL

POWER SUPPLY- (SEE SPECIFICATIONS) LOCKABLE FUSED DISCONNECT WITH AUXILIARY CONTACT TO BRAKE THE BATTERY FEED, OR CIRCUIT BREAKERS WITH A 3-POLE BREAKER FOR BATTERY FEED REQUIRED, IN COMPLIANCE WITH ELECTRICAL CODE, AS FOLLOWS:

(LOCATED ON WALL ON LOCK JAMB SIDE OF MACHINE ROOM DOOR)

PERMANENT POWER- BEFORE INSTALLATION CAN BEGIN, PERMANENT

LIGHTING- THE ILLUMINATION SHALL BE NOT LESS THAN 200 LX (19 FC) AT THE FLOOR LEVEL IN ALL MACHINE ROOMS AND MACHINERY SPACES. ENSURE AT LEAST 100 LX (10 FC) AMBIENT LIGHTING OVER LIFT AREA. LIGHTING OF 100 LX MIN. AT PLATFORM AND LANDINGS. LIGHTING WITH SWITCH AND ELECTRICAL GFCI OUTLET IN HOISTWAY PIT.

PHONE- NEED A PHONE LAND LINE (NOT VoIP) FOR THE PHONE, WHERE APPLICABLE. FOR VoIP PLEASE CONTACT SAVARIA.

*ENTRANCES

FASCIA PANEL BELOW UPPER LEVEL ENTRANCE- WHERE REQUIRED, FASCIA PANEL MUST BE FASTENED TO A SOLID WALL AND BE PERPENDICULAR TO THE FLOOR AND WALLS. HOISTWAY FASCIA IS NOT SELF-SUPPORTING FOR LONG, CONTINUOUS RUNS VOID OF ENTRANCES. ADEQUATE SUPPORT FOR THE FASCIA MUST BE PROVIDED.

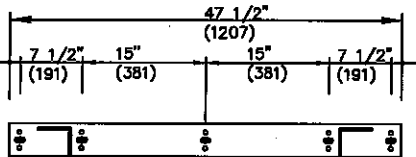
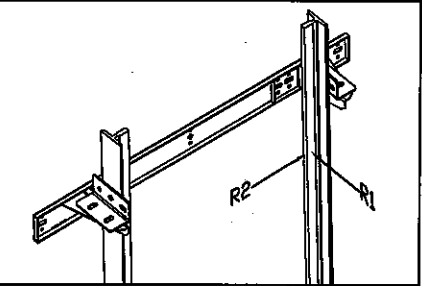
SPECIFICATIONS

GENERAL

CLASSIFICATION: Residential Building
APPLIED CODE: CAN/CSA B44-2007
MODEL: Infinity
CAPACITY: 1000lbs
NOMINAL SPEED: 36 fpm [0.18 m/s] UP AND DOWN
TRAVEL: 245 "
PIT DEPTH: 8 "
POWER SUPPLY: 60 Hz Single Phase 230 volt

HYDRAULIC

PUMP MFR: CONCORD
PUMP MODEL: VICKERS 3P
MOTOR: 3.0 hp FROM NIDEC
VALVE MODEL NO: EPV - 7
VALVE COIL VOLTS: 24 V DC
MAX WORKING PRESSURE: 1600 psi (11032 kPa)
RELIEF VALVE SETTING: MAX 25% ABOVE ACTUAL WORKING PRESSURE
RESERVOIR: 22 Gal.



FIRST DOOR BY LANDING CHART

	LANDING 1	LANDING 2	LANDING 3
DOOR TYPE	Doors By Others	Doors By Others	Doors By Others
ENTRANCE SIDE	Side C	Side C	Side C
DOOR SWING	Right Hand	Right Hand	Right Hand
LOCK TYPE	Porta Locks	Porta Locks	Porta Locks
AUTO DOOR OPENER			
HALL CALL KEY SWITCH			
FLOOR MARKING	B	M	2

RAIL BRACKET

RAIL FORCES	R3 NOTE:
	PIT FLOOR TO SUPPORT LOAD OF: 6.4 kips * (INCLUDES IMPACT)
*R1 304 lbf	FOR TOTAL PULL-OUT FORCE ON RAIL BRACKET, R1 MUST BE DOUBLED eg. 2 x 304 = 608 lbf
*R2 194 lbf	
RAIL WEIGHT: 8.0 lbs/ft	

CAR FINISH DETAILS

CAB PANEL SELECTION: Melamine Silken Maple WF122
CAB SPECIAL FINISH: Not applicable
CEILING SELECTION: standard (white)
BRASS CAB PKG REQ'D? LED Pot Light
POT LIGHT FINISH: Stainless Steel
TRIM COLOUR: Clear Anodized Aluminum
CAR STATION PLATE: Clear Anodized Alum. with PI
HAND RAIL TYPE: Clear Anodized Aluminum
CAB FLOORING: Plywood Floor 3/4"
FINISHED FLOOR THICKNESS: 3/4" finish
TELEPHONE CABINET: Telephone Box Required

CAR DIMENSIONS/PLATFORM GATES

CAB TYPE: Type 1 Right Hand
CAB OPERATION: auto
GATES REQUIRED: Manual Gate(s)
GATE TYPE: Panel Fold(Clear)WHT 3 Plexi
GATE FINISH: Gate Finish : Hard Hinges /locking mechanism
LANDING DOOR FINISH: N/A

JACK UNIT

EFFECTIVE STROKE: 124 1/2"
PLUNGER O/D: 2 1/2 "
CYLINDER O/D: 3 1/4 "
CYLINDER I/D: 2 3/4 "
SPLIT CYLINDER? no
COLLAPSED LENGTH: 146 3/4 "

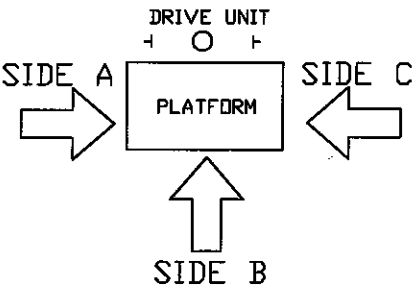
SUSPENSION

TYPE: AIRCRAFT CABLE 2 X 3/8" DIA. RATIO 1:2
CONSTRUCTION: IWRC 7 X 19
NOMINAL STRENGTH: 14,400 lbs Per Cable
SPECS: MIL-83420
SAFETIES: TYPE A

OPTIONS

PHONE: Standard Phone Provided
TRAVELING CABLE: Flat Traveling Cable
LED POT LIGHT: LED Pot Light
FLOOD SWITCH: Not Required
NY CAM KIT: NO

ENTRANCE SIDE LEGEND



OFFICE USE ONLY:

CONFIGURATION VERSION STAMP: 0.0
MODULE VERSION STAMP: I-S-7185

Part No. INFINITY
Variant No. 109752

savaria™

JOB No. P-000000 SHEET No. 3 OF 3

DATA SHEET

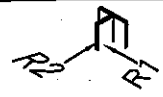
CUSTOMER: SAVARIA SIS
PROJECT: GEORGIAN 4 - LOT 3
ADDRESS: OAKVILLE, ONTARIO

DATE: 11/22/17
REVISION DATE: 04/18/19
COMPLETED BY: [Signature]

NOTE:

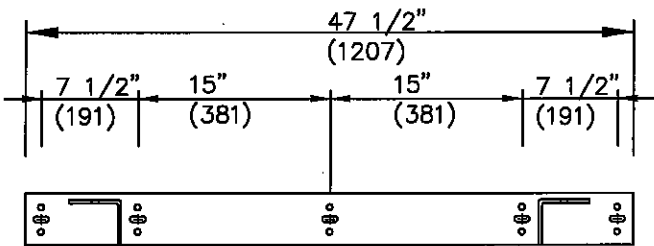
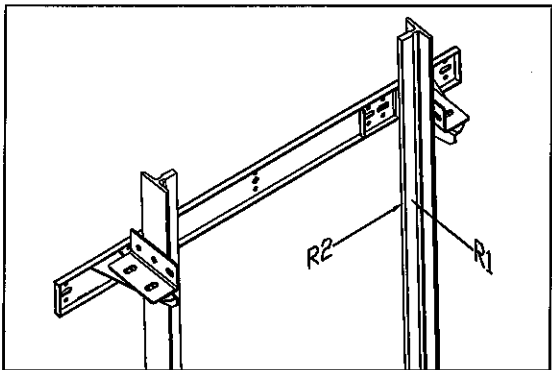
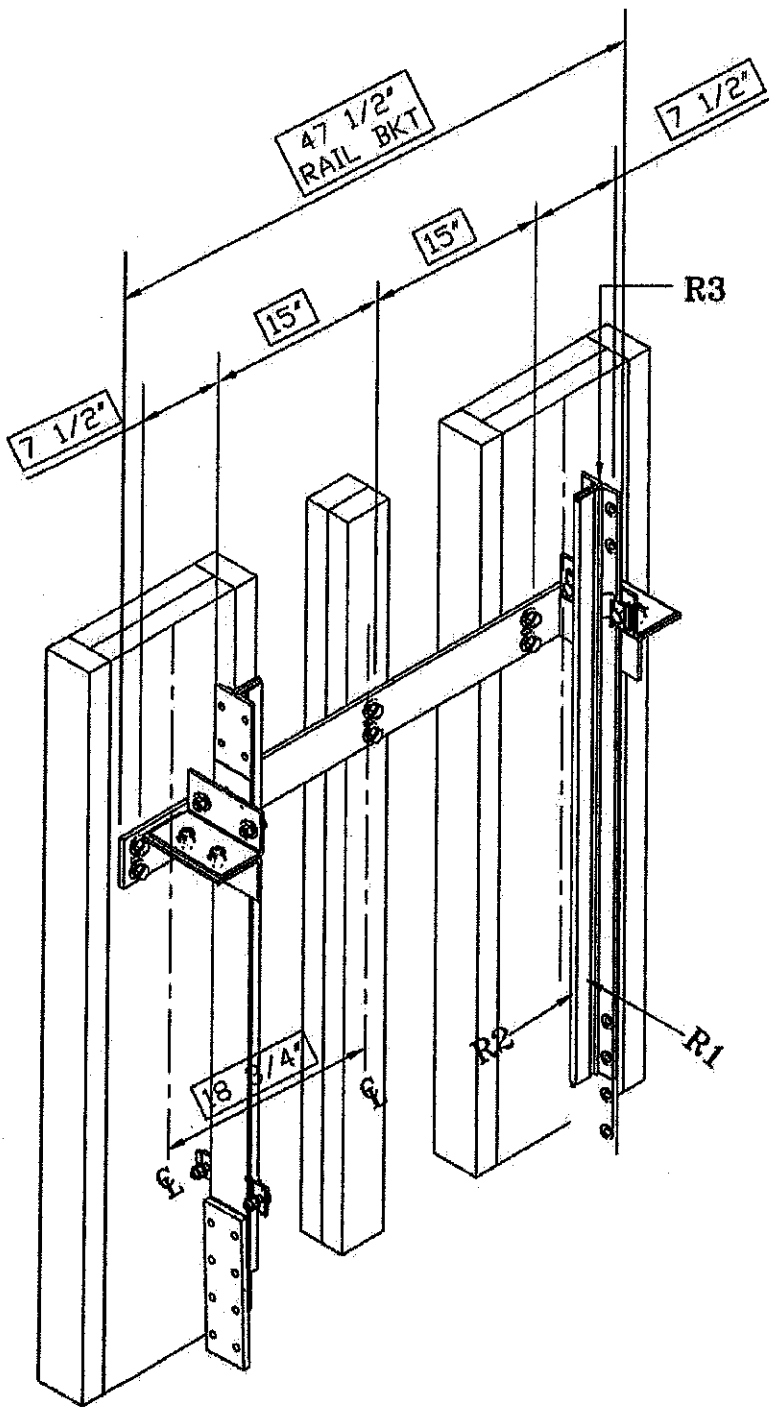
- 1. THIS DRAWING IS FOR REFERENCE ONLY. BUILDING STRUCTURAL ENGINEER TO ENSURE THAT THE BUILDING AND HOISTWAY WILL SAFELY SUPPORT ALL LOADS IMPOSED BY THE LIFT EQUIPMENT
- 2. FIRE RATING OF HOISTWAY IS SUBJECT TO LOCAL BUILDING CODES.

RAIL BRACKET

RAIL FORCES			R3 NOTE:	
	*R1	304 lbf	PIT FLOOR TO SUPPORT LOAD OF: 6.4 kips * (INCLUDES IMPACT)	
	*R2	194 lbf		
RAIL WEIGHT: 8.0 lbs/ft				

FOR TOTAL PULL-OUT FORCE ON RAIL BRACKET, R1 MUST BE DOUBLED eg. $2 \times 304 = 608$ lbf

FASTNERS PROVIDE WITH ELEVATOR ARE:
1/2" X 3" ZINC GRADE 5 CARBON STEEL
HEX HEAD LAG FOR WOOD BLOCKING OR
1/2" X 3" HEX NUT SLEEVE ANCHOR
STEEL ZINC FOR CONCRETE BLOCKING



RAIL BRACKET SUPPORTED ON (2) 2x12 LAMINATED MEMBERS SUPPORTED AND FASTENED BETWEEN (2) 2x4 STUDS ON TO WHICH GYPSUM BOARDS ARE ATTACHED

