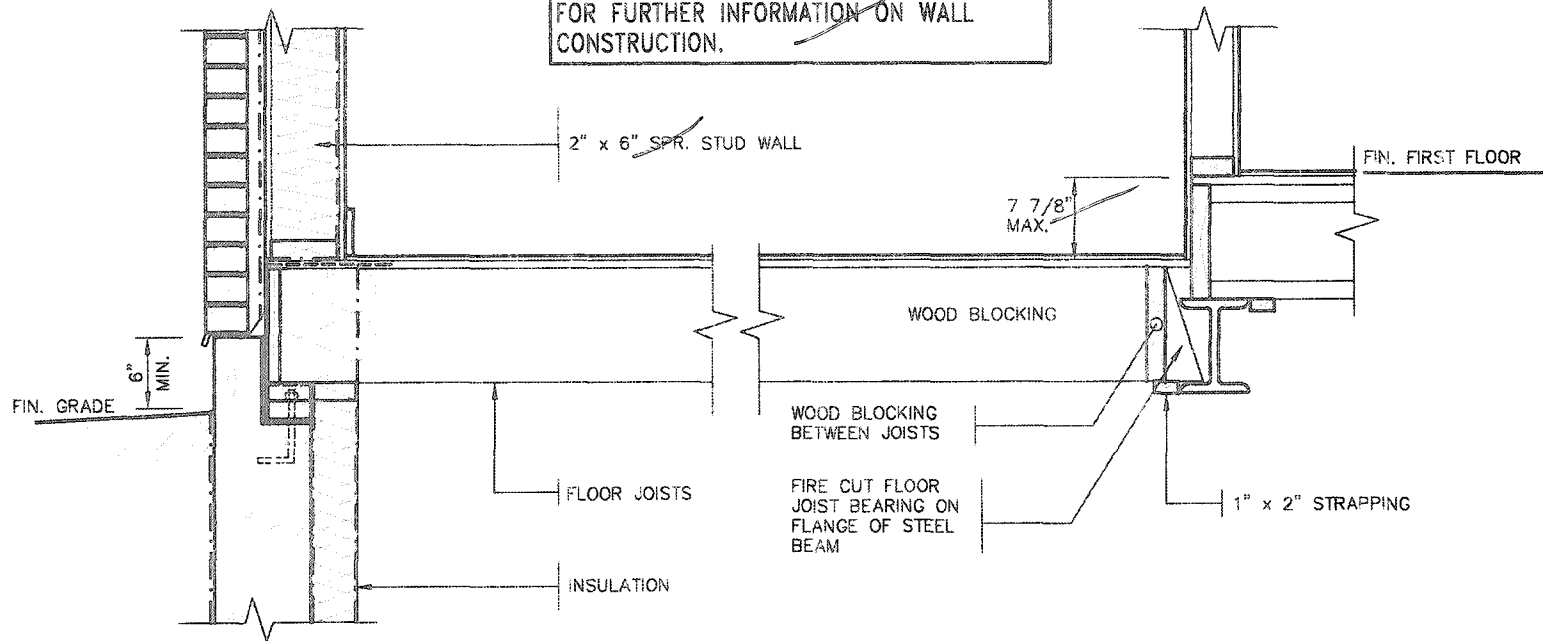
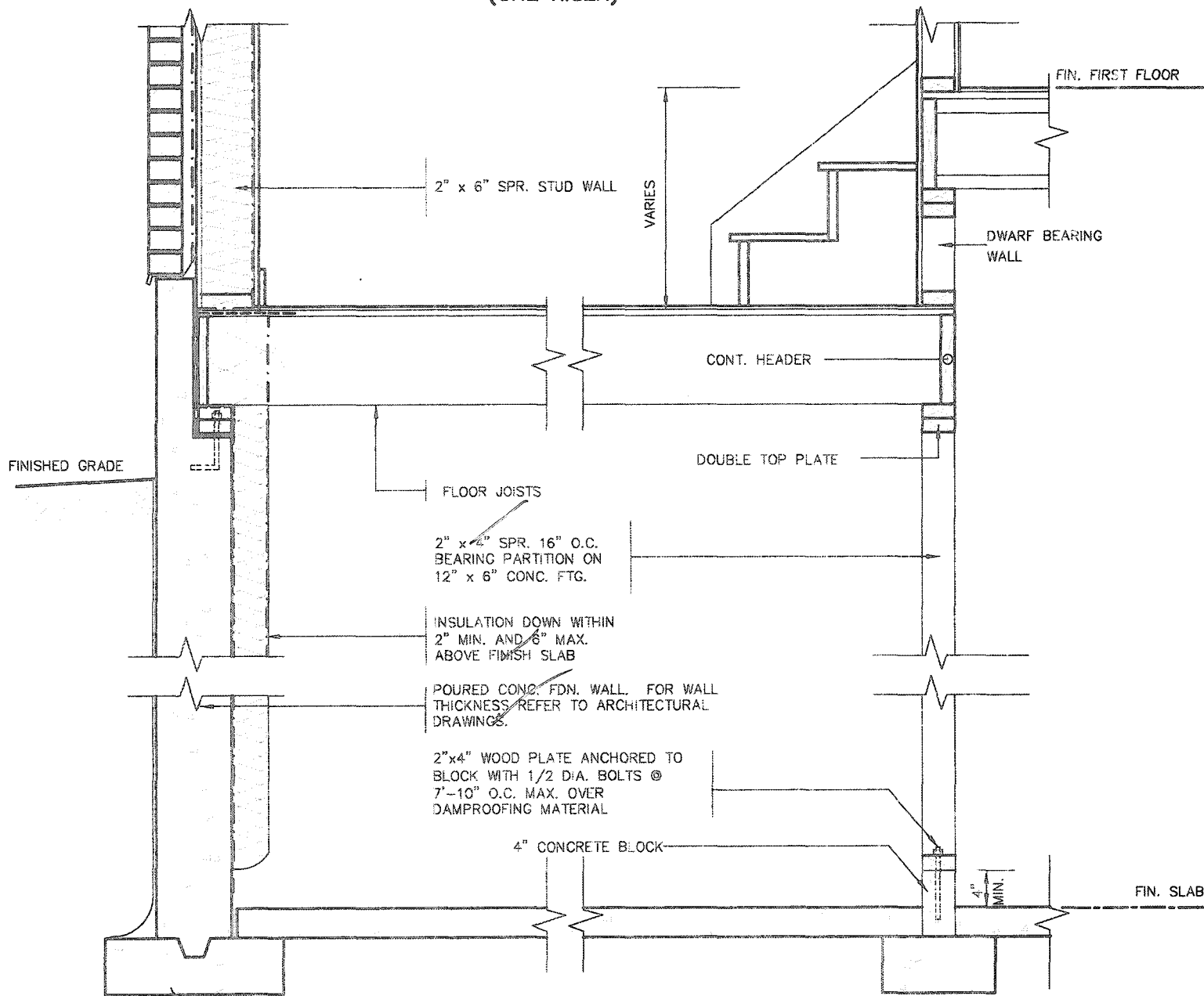
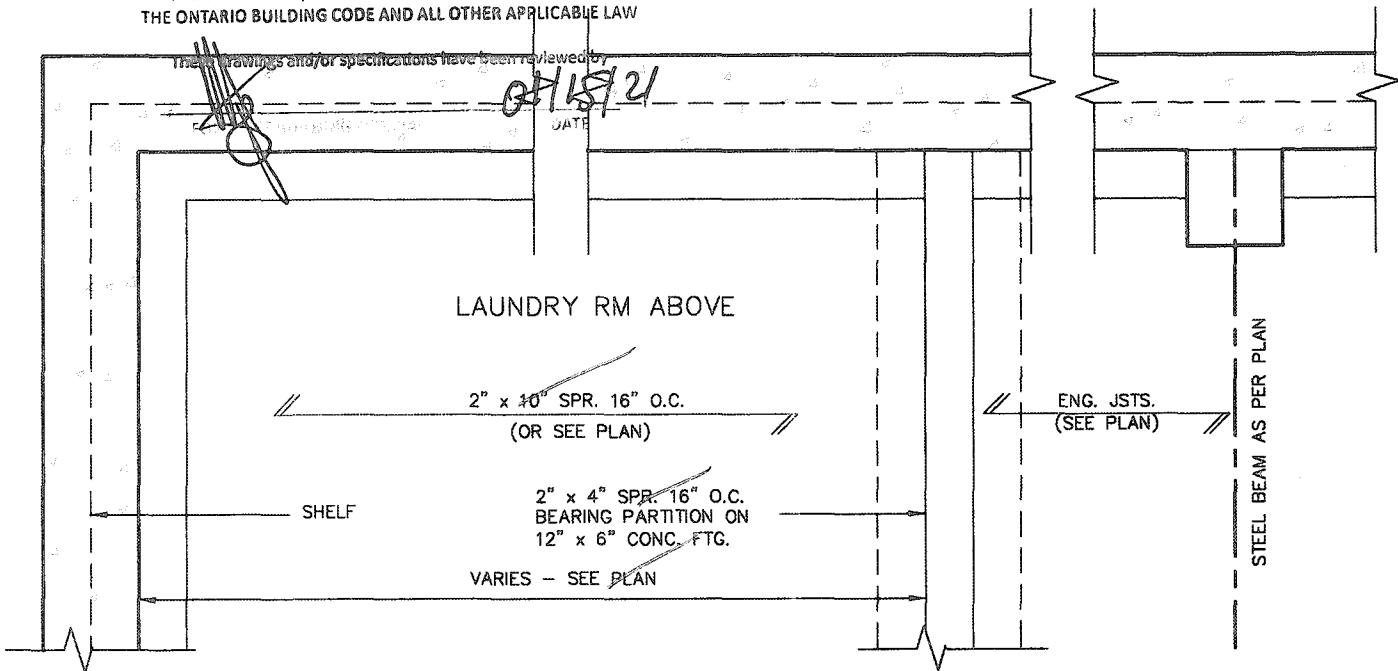




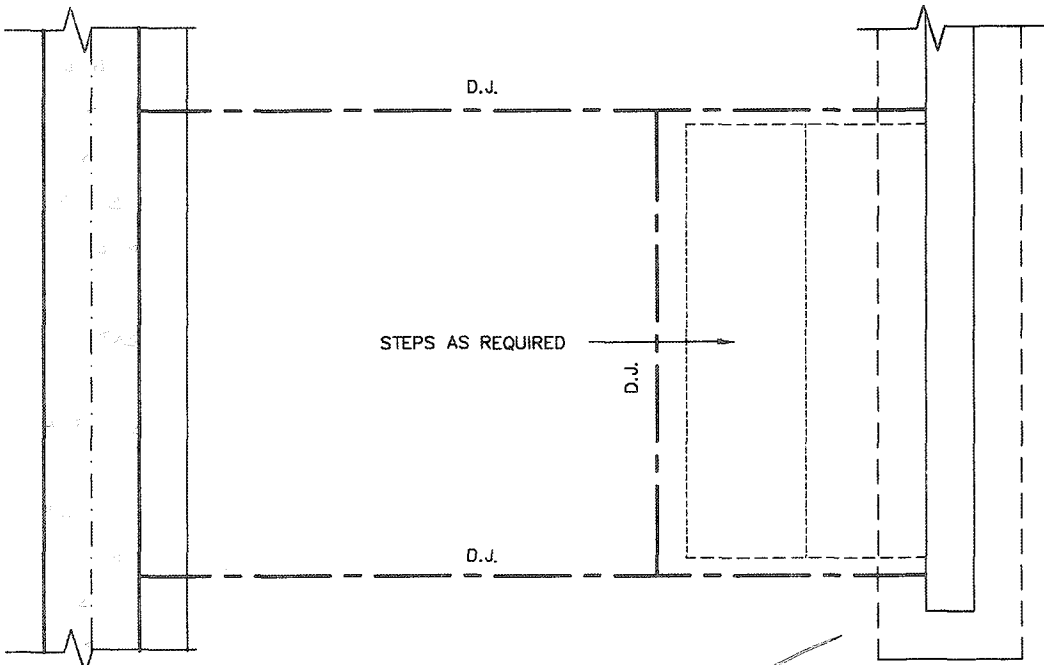
REFER TO STANDARD WALL SECTION SHEET FOR FURTHER INFORMATION ON WALL CONSTRUCTION.



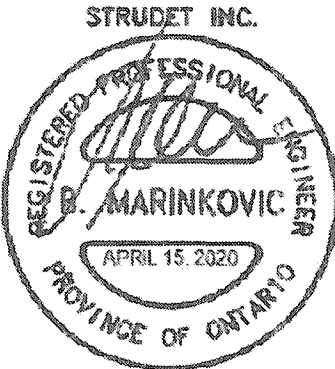
DETAIL OF SUNKEN LAUNDRY/ENTRY (ONE RISER)



DETAIL OF SUNKEN LAUNDRY/ENTRY (MORE THAN ONE RISER)



PARTIAL FOUNDATION PLAN



FOR STRUCTURE ONLY

2012 CODE COMPLIANCE PACKAGE A1

9					
8					
7					
6					
5					
4					
3					
2					
1	ISSUED FOR PERMIT.	APR 13/20	GW		
no.	description	date	by		

The undersigned has reviewed and takes responsibility for this design and has the qualifications and meets the requirements set out in the Ontario Building Code to be a Designer.

qualification information

Richard Vink 24488 BCN

name registration information

VA3 Design Inc. 42658

Contractor must verify all dimensions on the job and report any discrepancy to the Designer before proceeding with the work. All drawings and specifications are instruments of service and the property of the Designer which must be returned at the completion of the work. Drawings are not to be copied.

**VA3 DESIGN**

255 Consumers Rd Suite 120  
Toronto ON M2J 1R4  
t 416.630.2255 f 416.630.4782  
va3design.com

**Greenpark.**

project name	RUSSELL GARDENS PH. 3	municipality	WATERDOWN	project no.	19014
date	APRIL 2020	checked by		drawn by	GW
scale	Not to Scale	file name	19014-GP-STD_DETAILS_A1	drawing no.	2



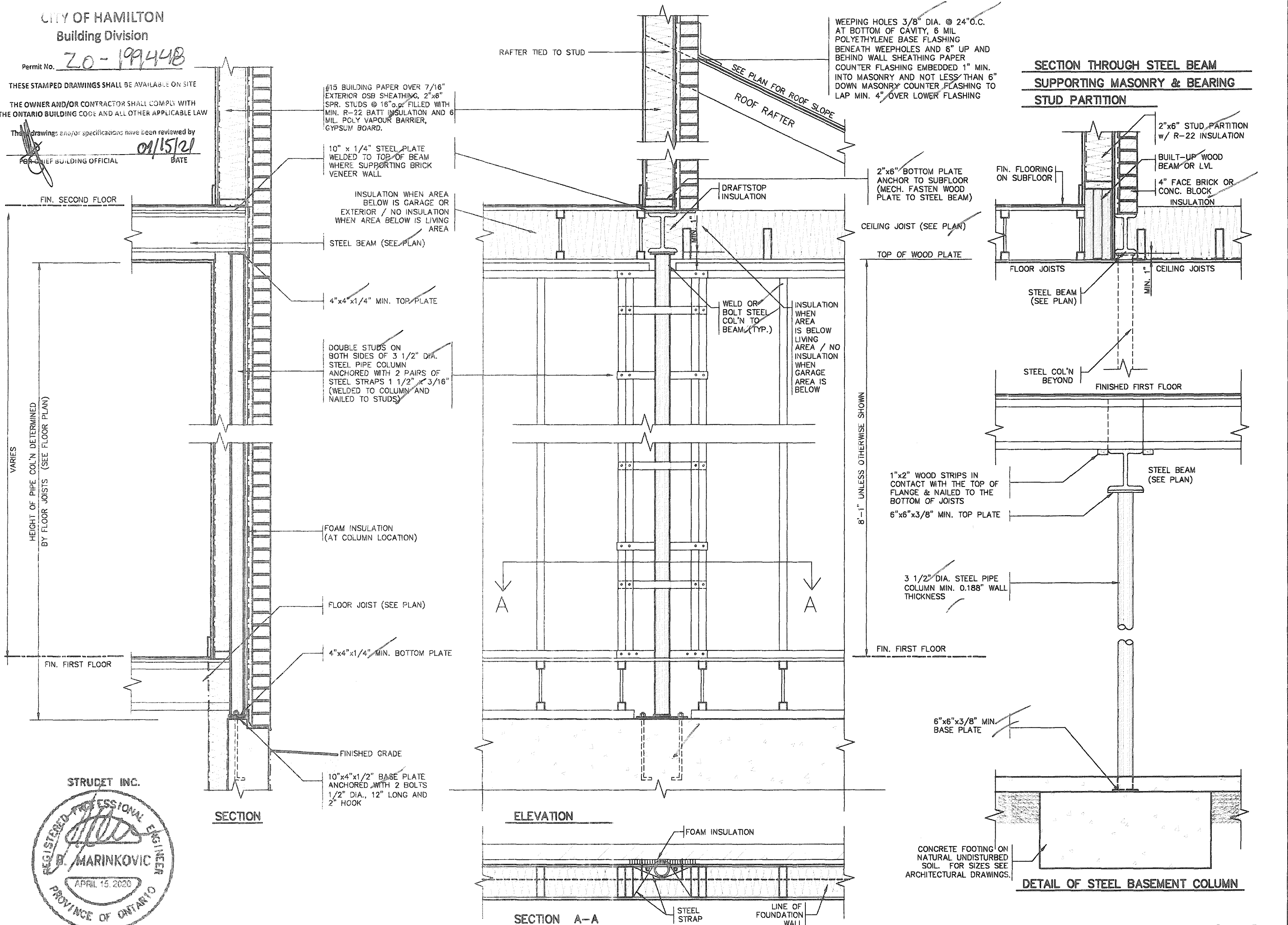
All drawings specifications, related documents and design are the copyright property of V&3 DESIGN. Reproduction of this property in whole or in part is strictly prohibited without V&3 DESIGN's written permission.

CITY OF HAMILTON  
Building Division

Permit No. **20-199448**

THESE STAMPED DRAWINGS SHALL BE AVAILABLE ON SITE  
THE OWNER AND/OR CONTRACTOR SHALL COMPLY WITH  
THE ONTARIO BUILDING CODE AND ALL OTHER APPLICABLE LAW

These drawings and/or specifications have been reviewed by  
FOR CHIEF BUILDING OFFICIAL DATE **01/15/21**



2012 CODE  
COMPLIANCE PACKAGE A1


<p>9. _____</p> <p>8. _____</p> <p>7. _____</p> <p>6. _____</p> <p>5. _____</p> <p>4. _____</p> <p>3. _____</p> <p>2. _____</p> <p>1. ISSUED FOR PERMIT. AFR 13/20 GW</p>	<p>The undersigned has reviewed and takes responsibility for this design and has the qualifications and meets the requirements set out in the Ontario Building Code to be a Designer.</p> <p>qualification information</p> <p>Richard Vink 24488</p> <p>name signature BCN</p> <p>registration information</p> <p>VAS Design Inc. 42658</p> <p>Contractor must verify all dimensions on the job and report any discrepancy to the Designer before proceeding with the work. All drawings and specifications are instruments of service and the property of the Designer which must be returned at the completion of the work. Drawings are not to be copied.</p>	<p><b>VAS DESIGN</b></p> <p>255 Consumers Rd Suite 120 Toronto ON M2J 1R4 t 416.630.2255 f 416.630.4782 vasdesign.com</p>	<p><b>Greenpark.</b></p> <p>project name <b>RUSSELL GARDENS PH. 3</b> municipality <b>WATERDOWN</b></p> <p>date <b>APRIL 2020</b> checked by _____ scale <b>As Shown</b></p> <p><b>STEEL COLUMN DETAILS</b> file name <b>19014-GP-STD_DETAILS_A1</b></p>	<p><b>SINGLES</b></p> <p>project no. <b>19014</b> drawing no. <b>4</b></p>
---	--	---	--	--

12<sup>th</sup> CONC. PIER

SCALE: 1/2"=1'-0"

A technical drawing of a vertical assembly. At the top, a horizontal line is dimensioned as 3" across. Below this, a vertical component is shown with a U-shaped bracket or clamp around its middle section. To the left of this bracket, there is a horizontal line with an arrow pointing towards the assembly. Below the bracketed section, there is a rectangular block with a small circle in the center. At the bottom, another horizontal line with an arrow points towards the assembly.

DETAIL 2 -  
BEAM-TO-POST  
SCALE: 1" = 1'-0"

These drawings and/or specifications have been reviewed by  
 09/15/21  
 \_\_\_\_\_  
 BUILDING OFFICIAL DATE

Connection to or through Brick  
vinner is not permitted.  
Brick must be removed  
and steel bracket.

FIN. FLOOR

5" MIN.

BOARD  
(ED)

TENED  
IND.  
TAIL  
PORTAR

This technical drawing shows a side elevation of a tailboard and tail support assembly. A horizontal line at the top is labeled "FIN. FLOOR". Below it, a vertical dimension line indicates a minimum clearance of "5" MIN." between the floor and the top of the tailboard. The tailboard is shown as a series of horizontal planks. A vertical support structure is attached to the right side of the tailboard. A horizontal line, likely a cable or rod, runs across the middle of the assembly. Labels with leader lines point to various parts: "BOARD (ED)" points to the tailboard planks, "TENED IND. TAIL PORTAR" points to the vertical support structure, and another line points to the horizontal cable/rod.

DETAIL 3  
STEEL ANGLE  
SCALE: 1" = 1'-0"

SCALE: 1" = 1'-0"

SCALE: 1" = 1'-0"

2- #8 x 63 mm  
(2 1/2") SCREWS

2" x 6" OR 2" x  
4" WOOD DECKING

3- #7 x 76 mm  
(3") SCREW

WOOD BLOCKING  
@ 400 mm (16")  
O.C.

2" x 6" FLOOR  
JOISTS @ 16" O.C.

6 1/2"

1"

3"

WR1 RM4 JOISTS

[illegible]

2" x 2" PICKET

2" x 12" STRINGER

2-5/4 x 6 FOR STAIR TREADS C/W 1/4" GAPS SCREWED TO 2" x 2" BLOCKING WITH 1-2 1/2" SCREW @ EACH MEMBER

1-3" SCREW @ EACH 2" x 4" SCREWED IN FROM OUTSIDE FACE OF STRINGER

2" x 2" WOOD BLOCKING SECURED WITH 2-2 1/2" SCREWS

3-3" SCREWS "TOE NAILED" ON OUTSIDE FACE OF STRINGER TO SECURE STRINGER TO RIM JOISTS

D5

DETAIL 5  
SECTION THROUGH  
STAIR STRINGER  
SCALE: 1" = 1'-0"

DETAIL 4  
SECTION @ TREAD AND  
STRINGER SECUREMENT  
SCALE: 1" = 1'-0"

1. BRICK TO HAVE COMPRESSIVE STRENGTH OG 15mPa (2200 p.s.i) MIN.UNITS TO BE LAID WITH FULL HEAD AND BED JOINTS.
2. MORTAR TO BE TYPE 'S' WITH JOINT THICKNESS OF 10mm (3/8") MIN. AND 20mm (3/4") MAX.
3. THE DECK HAS BEEN DESIGNED TO SAFELY SUPPORT A SUPERIMPOSED LOAD OF 1.9kPa. [40psf].
4. ALL NAILS AND SCREWS TO BE GALVANIZED.
5. WOOD FOR CANTILEVERED PICKETS SHALL BE DOUGLAS FIR-LARCH, SPRUCE-PINE-FIR, OR HEM-FIR SPECIES.
6. CONCRETE SHALL HAVE COMPRESSIVE STRENGTH OF 20MPa. AT 28 DAYS AND 5-8% AIR ENTRAINED.
7. FOOTING TO BE PLACED ON UNDISTURBED SOIL WITH MINIMUM BEARING PRESSURE OF 150kPa [3130psf].
8. WB1= 2- 2"x8" (PRESSURE TREATED)  
WB3= 2- 2"x10" (PRESSURE TREATED)

2012 CODE  
COMPLIANCE PACKAGE A1

1																																																																																																																																																																																																																																																																																																																																																																																																																																																																																																																																																																																																																																																																																																																																																																																																																																																																																																																																																																																																																																																																																																																																																																																																																																																																																																																																																																																																																				
---	--	--	--	--	--	--	--	--	--	--	--	--	--	--	--	--	--	--	--	--	--	--	--	--	--	--	--	--	--	--	--	--	--	--	--	--	--	--	--	--	--	--	--	--	--	--	--	--	--	--	--	--	--	--	--	--	--	--	--	--	--	--	--	--	--	--	--	--	--	--	--	--	--	--	--	--	--	--	--	--	--	--	--	--	--	--	--	--	--	--	--	--	--	--	--	--	--	--	--	--	--	--	--	--	--	--	--	--	--	--	--	--	--	--	--	--	--	--	--	--	--	--	--	--	--	--	--	--	--	--	--	--	--	--	--	--	--	--	--	--	--	--	--	--	--	--	--	--	--	--	--	--	--	--	--	--	--	--	--	--	--	--	--	--	--	--	--	--	--	--	--	--	--	--	--	--	--	--	--	--	--	--	--	--	--	--	--	--	--	--	--	--	--	--	--	--	--	--	--	--	--	--	--	--	--	--	--	--	--	--	--	--	--	--	--	--	--	--	--	--	--	--	--	--	--	--	--	--	--	--	--	--	--	--	--	--	--	--	--	--	--	--	--	--	--	--	--	--	--	--	--	--	--	--	--	--	--	--	--	--	--	--	--	--	--	--	--	--	--	--	--	--	--	--	--	--	--	--	--	--	--	--	--	--	--	--	--	--	--	--	--	--	--	--	--	--	--	--	--	--	--	--	--	--	--	--	--	--	--	--	--	--	--	--	--	--	--	--	--	--	--	--	--	--	--	--	--	--	--	--	--	--	--	--	--	--	--	--	--	--	--	--	--	--	--	--	--	--	--	--	--	--	--	--	--	--	--	--	--	--	--	--	--	--	--	--	--	--	--	--	--	--	--	--	--	--	--	--	--	--	--	--	--	--	--	--	--	--	--	--	--	--	--	--	--	--	--	--	--	--	--	--	--	--	--	--	--	--	--	--	--	--	--	--	--	--	--	--	--	--	--	--	--	--	--	--	--	--	--	--	--	--	--	--	--	--	--	--	--	--	--	--	--	--	--	--	--	--	--	--	--	--	--	--	--	--	--	--	--	--	--	--	--	--	--	--	--	--	--	--	--	--	--	--	--	--	--	--	--	--	--	--	--	--	--	--	--	--	--	--	--	--	--	--	--	--	--	--	--	--	--	--	--	--	--	--	--	--	--	--	--	--	--	--	--	--	--	--	--	--	--	--	--	--	--	--	--	--	--	--	--	--	--	--	--	--	--	--	--	--	--	--	--	--	--	--	--	--	--	--	--	--	--	--	--	--	--	--	--	--	--	--	--	--	--	--	--	--	--	--	--	--	--	--	--	--	--	--	--	--	--	--	--	--	--	--	--	--	--	--	--	--	--	--	--	--	--	--	--	--	--	--	--	--	--	--	--	--	--	--	--	--	--	--	--	--	--	--	--	--	--	--	--	--	--	--	--	--	--	--	--	--	--	--	--	--	--	--	--	--	--	--	--	--	--	--	--	--	--	--	--	--	--	--	--	--	--	--	--	--	--	--	--	--	--	--	--	--	--	--	--	--	--	--	--	--	--	--	--	--	--	--	--	--	--	--	--	--	--	--	--	--	--	--	--	--	--	--	--	--	--	--	--	--	--	--	--	--	--	--	--	--	--	--	--	--	--	--	--	--	--	--	--	--	--	--	--	--	--	--	--	--	--	--	--	--	--	--	--	--	--	--	--	--	--	--	--	--	--	--	--	--	--	--	--	--	--	--	--	--	--	--	--	--	--	--	--	--	--	--	--	--	--	--	--	--	--	--	--	--	--	--	--	--	--	--	--	--	--	--	--	--	--	--	--	--	--	--	--	--	--	--	--	--	--	--	--	--	--	--	--	--	--	--	--	--	--	--	--	--	--	--	--	--	--	--	--	--	--	--	--	--	--	--	--	--	--	--	--	--	--	--	--	--	--	--	--	--	--	--	--	--	--	--	--	--	--	--	--	--	--	--	--	--	--	--	--	--	--	--	--	--	--	--	--	--	--	--	--	--	--	--	--	--	--	--	--	--	--	--	--	--	--	--	--	--	--	--	--	--	--	--	--	--	--	--	--	--	--	--	--	--	--	--	--	--	--	--	--	--	--	--	--	--	--	--	--	--	--	--	--	--	--	--	--	--	--	--	--	--	--	--	--	--	--	--	--	--	--	--	--	--	--	--	--	--	--	--	--	--	--	--	--	--	--	--	--	--	--	--	--	--	--	--	--	--	--	--	--	--	--	--	--	--	--	--	--	--	--	--	--	--	--	--	--	--	--	--	--	--	--	--	--	--	--	--	--	--	--	--	--	--	--	--	--	--	--	--	--	--	--	--	--	--	--	--	--	--	--	--	--	--	--	--	--	--	--	--	--	--	--	--	--	--	--	--	--	--	--	--	--	--	--	--	--	--	--	--	--	--	--	--	--	--	--	--	--	--	--	--	--	--	--	--	--	--	--	--	--	--	--	--	--	--	--	--	--	--	--	--	--	--	--	--	--	--	--	--	--	--	--	--	--	--	--	--	--	--	--	--	--	--	--	--	--	--	--	--	--	--	--	--	--	--	--	--	--	--	--	--	--	--	--	--	--	--	--	--	--	--	--	--	--	--	--	--	--	--	--	--	--	--	--	--	--	--	--	--	--	--	--	--	--	--	--	--	--	--	--	--	--	--	--	--	--	--	--	--	--	--	--	--	--	--	--	--	--	--	--	--	--	--	--	--	--	--	--	--	--	--	--	--	--	--	--	--	--	--	--	--	--	--	--	--	--	--	--	--	--	--	--	--	--	--	--	--	--	--	--	--	--	--	--	--	--	--	--	--	--	--	--	--	--	--	--	--	--	--	--	--	--	--	--	--	--	--	--	--	--	--	--	--	--	--	--	--	--	--	--	--	--	--	--	--	--	--	--	--	--	--	--	--	--	--	--	--	--	--	--	--	--	--	--	--	--	--	--	--	--	--	--	--	--	--	--	--	--	--	--	--	--	--	--	--	--	--	--	--	--	--	--	--	--	--	--	--	--	--	--	--	--	--	--	--	--	--	--	--	--	--	--	--	--	--	--	--	--	--	--	--	--	--	--	--	--	--	--	--	--	--	--	--	--	--

All drawings, specifications, related documents and design are the copyright property of VA3 DESIGN. Reproduction of this property in whole or in part is strictly prohibited without VA3 DESIGN's written permission.



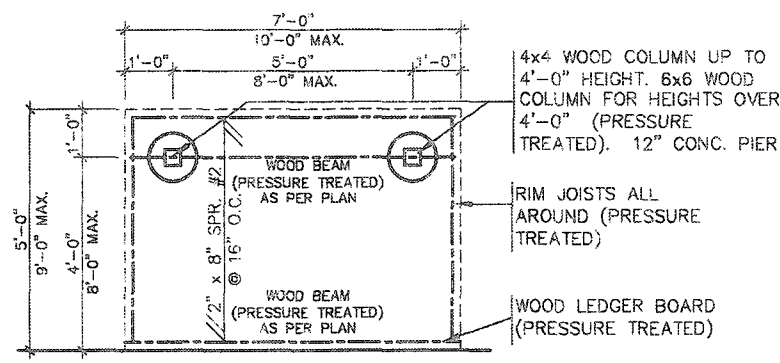
CITY OF HAMILTON  
Building Division

Permit No. 20-199498

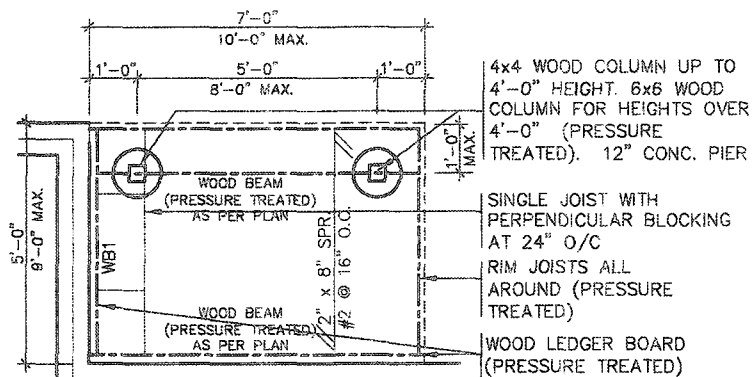
THESE STAMPED DRAWINGS SHALL BE AVAILABLE ON SITE

THE OWNER AND/OR CONTRACTOR SHALL COMPLY WITH  
THE ONTARIO BUILDING CODE AND ALL OTHER APPLICABLE LAW

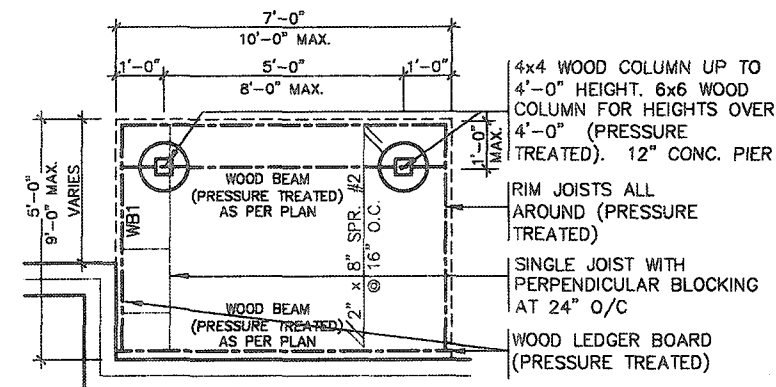
The drawings and/or specifications have been reviewed by  
FOR CHIEF BUILDING OFFICIAL 01/15/21 DATE



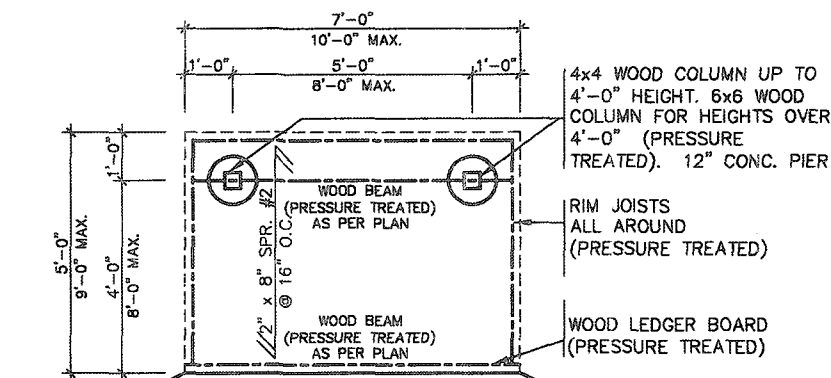
**TYPICAL DECK LAYOUT**  
SCALE: 1/4" = 1'-0"



**TYPICAL DECK LAYOUT**  
SCALE: 1/4" = 1'-0"



**TYPICAL DECK LAYOUT**  
SCALE: 1/4" = 1'-0"



**TYPICAL DECK LAYOUT**  
SCALE: 1/4" = 1'-0"

STRUDET INC.



FOR STRUCTURE ONLY

2012 CODE  
COMPLIANCE PACKAGE A1

9. The undersigned has reviewed and taken responsibility for this design and has the qualifications and meets the requirements set out in the Ontario Building Code to be a Designer. qualification information Richard Vink 24488 name signature BCIN registration information VA3 Design Inc. 42658 Contractor must verify all dimensions on the job and report any discrepancy to the Designer before proceeding with the work. All drawings and specifications are instruments of service and the property of the Designer which must be returned at the completion of the work. Drawings are not to be copied.		<b>VA3 DESIGN</b> 255 Consumers Rd Suite 120 Toronto ON M2J 1R4 t 416.630.2255 f 416.630.4782 va3design.com		<b>Greenpark</b> project name RUSSELL GARDENS PH. 3 municipality WATERDOWN project no. 19014		<b>SINGLES</b> drawing no. 5-1	
1. ISSUED FOR PERMIT. no. description AFR 13/20 GW date by		2. 255 Consumers Rd Suite 120 Toronto ON M2J 1R4 t 416.630.2255 f 416.630.4782 va3design.com		3. 255 Consumers Rd Suite 120 Toronto ON M2J 1R4 t 416.630.2255 f 416.630.4782 va3design.com		4. 255 Consumers Rd Suite 120 Toronto ON M2J 1R4 t 416.630.2255 f 416.630.4782 va3design.com	

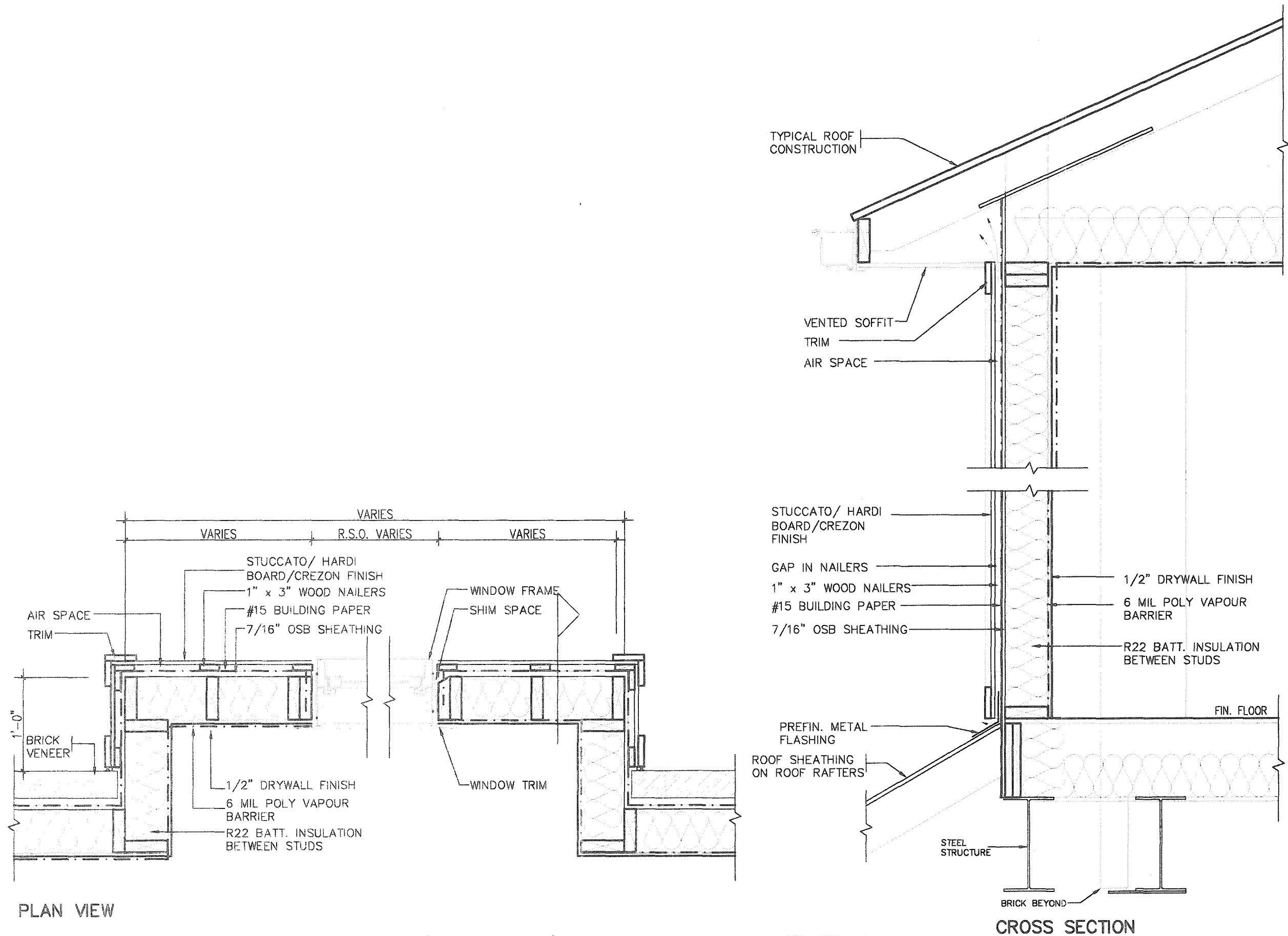
All drawings, specifications, related documents and design are the copyright property of VA3 DESIGN. Reproduction of this property in whole or in part is strictly prohibited without VA3 DESIGN's written permission.



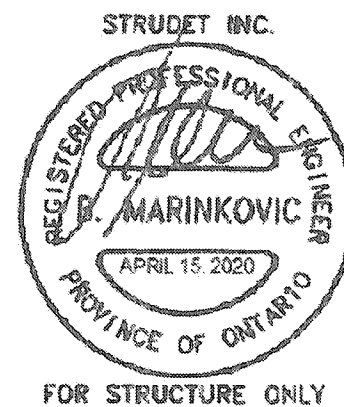








STUCCATO BOARD FINISH CLADDING OR EQUAL (OBC 9.27.)



2012 CODE COMPLIANCE PACKAGE A1

9	-	-	-	The undersigned has reviewed and takes responsibility for this design and has the qualifications and must the requirements set out in the Ontario Building Code to be a Designer.
8	-	-	-	qualification information
7	-	-	-	Richard Vink 24488
6	-	-	-	signature
5	-	-	-	name
4	-	-	-	registration information
3	-	-	-	VA3 Design Inc. 42658
2	-	-	-	Contractor must verify all dimensions on the job and report any discrepancy to the Designer before proceeding with the work. All drawings and specifications are instruments of service and the property of the Designer which must be returned at the completion of the work. Drawings are not to be copied.
1	ISSUED FOR PERMIT.	APR 13/20	GW	
no.	description	date	by	

<b>VA3 DESIGN</b>		255 Consumers Rd Suite 120 Toronto ON M2J 1R4 t 416.630.2255 f 416.630.4782 va3design.com	
-------------------	--	--	--

		<b>SINGLES</b>	
project name <b>RUSSELL GARDENS PH. 3</b>		city <b>WATERDOWN</b>	
date <b>APRIL 2020</b>		project no. <b>19014</b>	
drawn by <b>GW</b>		drawing no. <b>9</b>	
checked by <b>Not to Scale</b>		scale <b>19014-GP-STD_DETAILS_A1</b>	

TYPICAL RIGHT SIDE ELEVATION

TYPICAL BASEMENT PLAN

## SLAB ON GRADE CONDITION

NOTES:

1. LEVELS SHOWN ON THE PLANS ARE FOR ILLUSTRATION PURPOSE ONLY, SEE FINAL GRADING PLAN FOR ACTUAL LEVELS
2. ALL LEVELS ARE SHOWN IN METRIC

TYPICAL RIGHT SIDE ELEVATION

TYPICAL BASEMENT PLAN

## WALK OUT BASEMENT CONDITION

NOTES:

1. LEVELS SHOWN ON THE PLANS ARE FOR ILLUSTRATION PURPOSE ONLY, SEE FINAL GRADING PLAN FOR ACTUAL LEVELS
2. ALL LEVELS ARE SHOWN IN METRIC

SLAB ON GRADE

\* SLAB ON GRADE DEFINITION:  
IF 50% OR GREATER OF THE  
BASEMENT SLAB PERIMETER IN A  
HEATED SPACE, IS WITHIN 24"  
OF ADJACENT FINISHED GRADE

# WALK OUT BASEMENT 2012 CODE COMPLIANCE PACKAGE


\* SLAB ON GRADE DEFINITION:

INSULATE PERIMETER OF SLAB TO  
EXTENT THAT ADJACENT FINISHED  
GRADE IS WITHIN 24" OF SLAB

9	.	.	.	.
8	.	.	.	.
7	.	.	.	.
6	.	.	.	.
5	.	.	.	.
4	.	.	.	.
3	.	.	.	.
2	.	.	.	.
1	ISSUED FOR PERMIT.	A/R	13/20	G
re	description	date		h

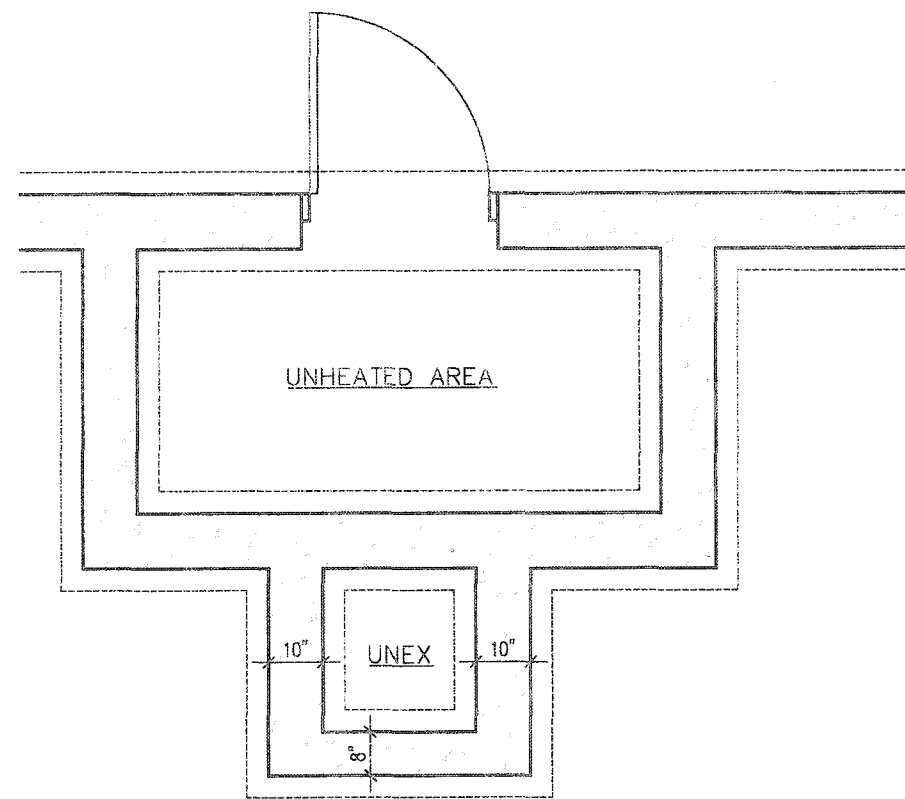
<p>The undersigned has reviewed and takes responsibility for this design and has the qualifications and meets the requirements set out in the Ontario Building Code to be a Designer.</p>	
<p>qualification information</p>	
<p>Richard Wink</p>	244
<p>name</p>	B
<p>registration information</p>	
<p>VA3 Design Inc.</p>	426
<p>Contractor must verify all dimensions on the job and report any discrepancy to the Designer before proceeding with the work. All drawings and specifications are instruments of service and the property of the Designer which must be returned at the completion of the work.</p>	
<p>Drawings to be returned to:</p>	

**VA3  
DESIGN**  
255 Consumers Rd Suite 120  
Toronto ON M2J 1R4  
t 416.630.2255 f 416.630.4782  
va3design.com

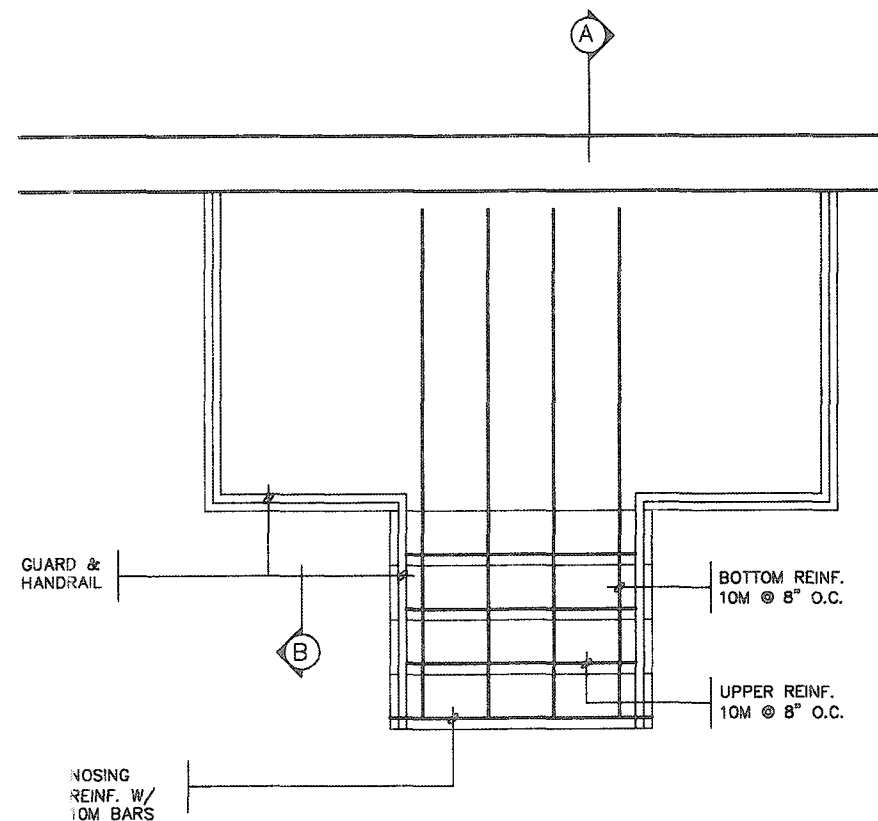
 <b>Greenpark</b>		<b>SINGLES</b> -	
project name <b>RUSSELL GARDENS PH. 3</b>		municipality <b>WATERDOWN</b>	
date <b>APRIL 2020</b>		project no. <b>19014</b>	
drawn by <b>GW</b>		checked by -	
made <b>Not to Scale</b>		drawing no. <b>10</b>	
title <b>SLAB ON GRADE INSULATION</b>		revision <b>19014-GP-STD_DETAILS_A1</b>	

All drawings, specifications, related documents and design are the copyright property of VA3 DESIGN. Reproduction of this property in whole or in part is strictly prohibited without VA3 DESIGN's written permission.

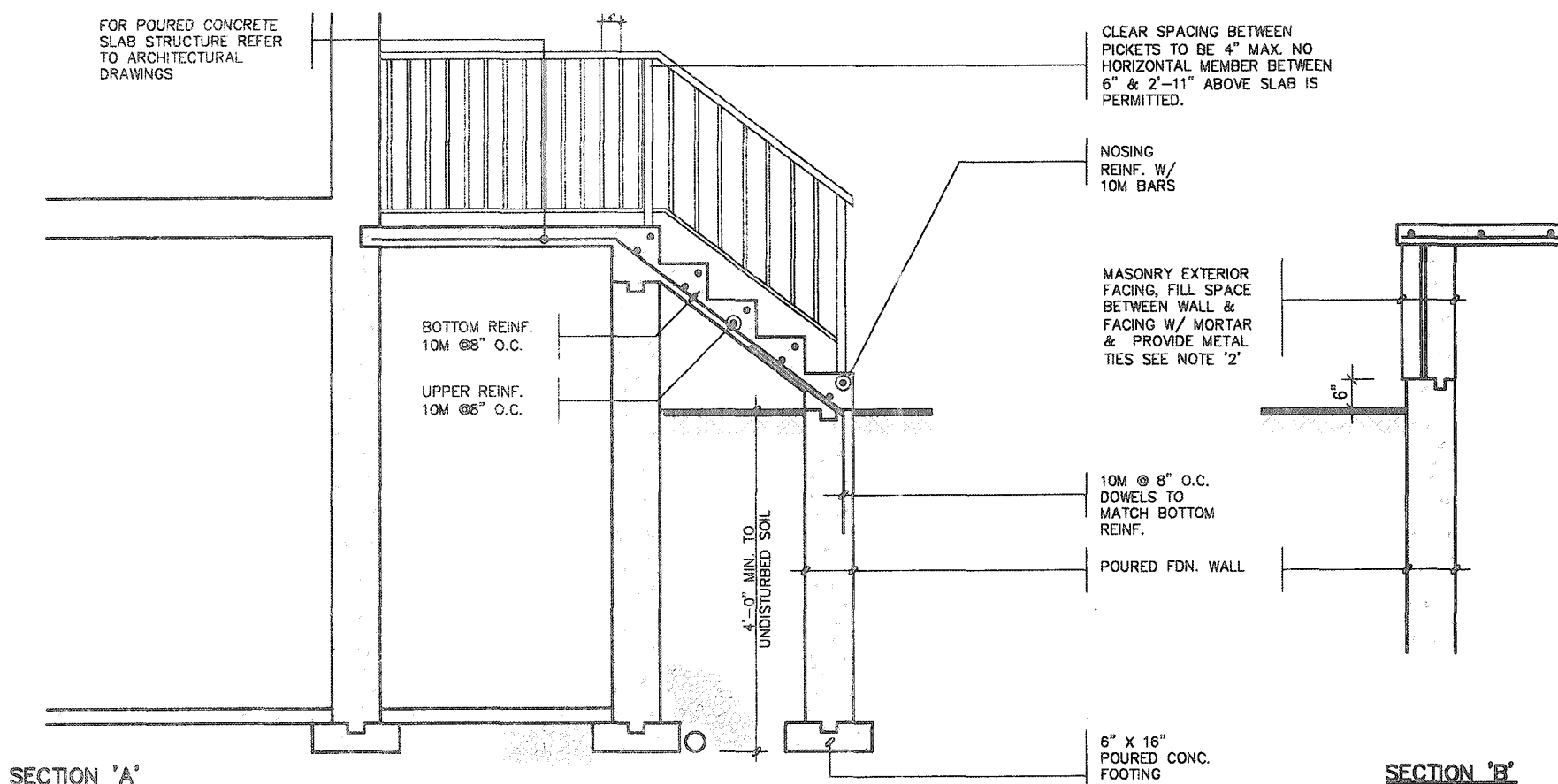




FOUNDATION PLAN



GROUND FLOOR PLAN



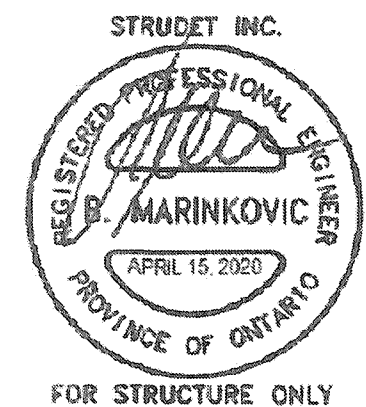
SECTION 'A'

SECTION 'B'

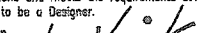
NOTE: FOR MORE THAN 8 RISERS


GENERAL NOTES


- EXTERIOR STAIRS**  
7 7/8" RISE MAXIMUM  
8 1/4" RUN MINIMUM  
9 1/4" TREAD MINIMUM
- MASONRY TIES**  
WHEN BRICK FACING IS USED ABOVE GROUND LEVEL, PROVIDE 3/16" DIA. CORROSION RESISTANT METAL TIES @ 36" HORIZONTAL & 8" VERTICAL
- GUARDS**  
ARE REQUIRED AROUND CONCRETE SLAB IF MORE THAN 2'-0" ABOVE GRADE & ON BOTH SIDES OF STAIRS CONTAINING MORE THAN 6 RISERS. MINIMUM 34" HIGH FOR STAIRS MINIMUM 36" HIGH FOR PORCHES UP TO 5'-11" ABOVE GRADE. MINIMUM 42" HIGH FOR GREATER HTS.
- HANDRAIL**  
ARE REQUIRED WHERE STEPS HAVE MORE THAN 3 RISERS. HANDRAIL HEIGHT 34" - 38".
- FOUNDATION WALLS**  
THICKNESS OF FOUNDATION WALLS IS DEPENDANT UPON VENEER CUT 8" FOR UP TO 26" VENEER CUT HEIGHT 10" FOR VENEER CUT OVER 26" HIGH
- CONCRETE**  
MINIMUM CONCRETE STRENGTH SHALL BE 4650 PSI [32MPa] W/ 5%-8% AIR ENTRAINMENT MINIMUM CONCRETE SLAB THICKNESS 5"
- CONCRETE COVER**  
PROVIDE MINIMUM 3/4" CLEAR CONCRETE COVER TO REINFORCING BARS

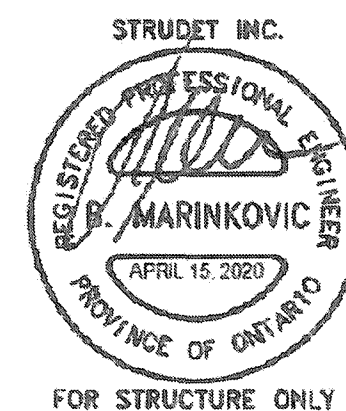


2012 CODE COMPLIANCE PACKAGE A1


				The undersigned has reviewed and takes responsibility for this design and has the qualifications and meets the requirements set out in the Ontario Building Code to be a Designer.				24488	
				qualification information		Richard Vink		42658	
				name registration information		VA3 Design Inc.		42658	
				Contractor must verify all dimensions on the job and report any discrepancy to the Designer before proceeding with the work. All drawings and specifications are instruments of service and the property of the Designer which must be returned at the completion of the work. Drawings are not to be scaled.					
1 ISSUED FOR PERMIT.				APR 13/20		GW			
no.		description		date		by			

		255 Consumers Rd Suite 120 Toronto ON M2J 1R4 t 416.630.2255 f 416.630.4782 va3design.com	
---	--	--	--

		SINGLES	
project name RUSSELL GARDENS PH. 3		project no. 19014	
date APRIL 2020		location WATERDOWN	
drawn by GW		description POURED CONC. PORCH STEPS	
checked by -		scale Not to Scale	
revision 1		drawing no. 11	
19014-CP-STD_0485_A1			



2012 CODE  
COMPLIANCE PACKAGE A1

9			The undersigned has reviewed and takes responsibility for this design and has the qualifications and meets the requirements set out in the Ontario Building Code to be a Designer.						SINGLES			
8												
7												
6												
5			Richard Vink		24488							
4			signature		BCIN							
3			registration information		42656							
2			VAS Design Inc.									
1												
ISSUED FOR PERMIT.			APR 13/20		GW		date by		DETAIL OF EXTENDED ROOF		drawing no.	
no. description									19014-GP-STD_DETAILS_A1		12	

All drawings, specifications, related documents and design are the copyright property of VA3 DESIGN. Reproduction of this property in whole or in part is strictly prohibited without VA3 DESIGN's written permission.

Permit No. 20-199448

THESE STAMPED DRAWINGS SHALL BE AVAILABLE ON SITE

THE OWNER AND/OR CONTRACTOR SHALL COMPLY WITH  
THE ONTARIO BUILDING CODE AND ALL OTHER APPLICABLE LAW

These drawings and/or specifications have been reviewed by  
 \_\_\_\_\_ 01/15/21  
 FOR CHIEF BUILDING OFFICIAL DATE

BRICK/  
STONE  
VENEER

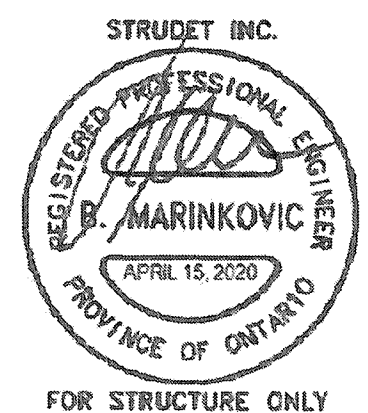
INVERTED  
- 3-1/2"x3-1/2"x1/4"  
(90x90x6.0)  
STEEL ANGLE

INVERTED  
3-1/2"x3-1/2"x1/4"  
(90x90x6.0)  
STEEL ANGLE

BRICK/  
STONE  
VENEER

SUPPORTED STEEL  
— ANGLE UP TO 11' ~~7"~~.  
OTHERWISE TO BE  
REVIEWED BY ENGINEER.

# INVERTED STEEL ANGLE DETAIL



2012 CODE  
COMPLIANCE PACKAGE A1

[illegible]

All drawings specifications, related documents and design are the copyright property of VA3 DESIGN. Reproduction of this property in whole or in part is strictly prohibited without VA3 DESIGN's written permission.

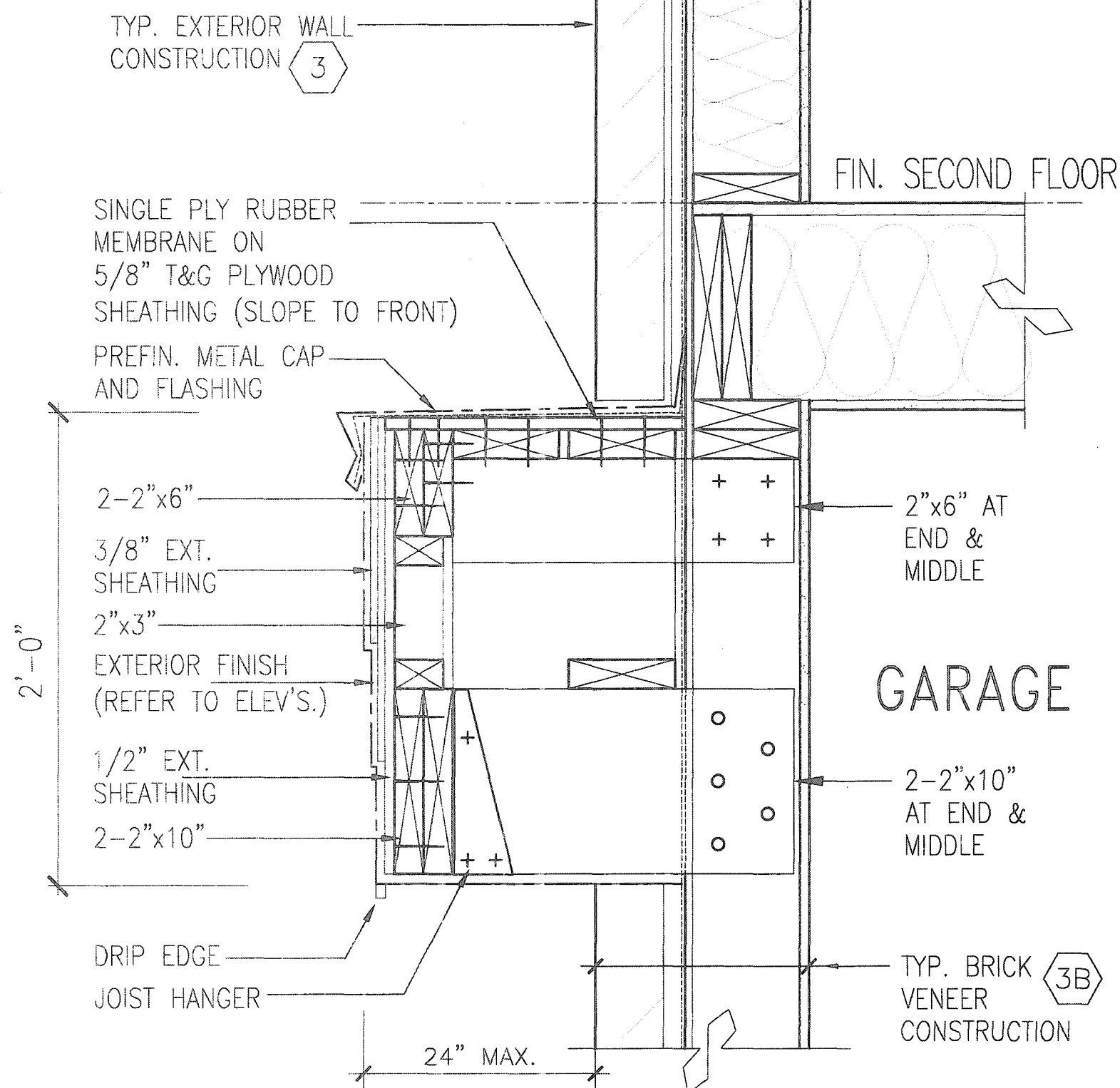


CITY OF HAMILTON  
Building Division

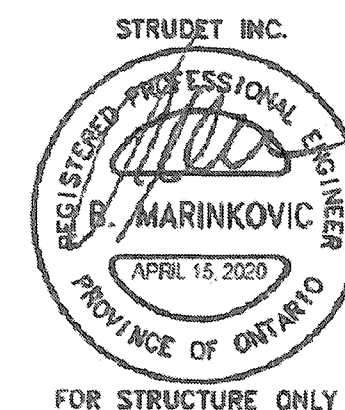
Permit No. 20-199414B

THESE STAMPED DRAWINGS SHALL BE AVAILABLE ON SITE  
THE OWNER AND/OR CONTRACTOR SHALL COMPLY WITH  
THE ONTARIO BUILDING CODE AND ALL OTHER APPLICABLE LAW

These drawings and/or specifications have been reviewed by  
FOR CHIEF BUILDING OFFICIAL 01/15/21 DATE



**C2** CANOPY DETAIL  
SCALE: N.T.S



2012 CODE  
COMPLIANCE PACKAGE A1

9 8 7 6 5 4 3 2 1 ISSUED FOR PERMIT.		APR 13/20 GW date by	The undersigned has reviewed and takes responsibility for this design and has the qualifications and meets the requirements set out in the Ontario Building Code to be a Designer. qualification information Richard Vink 24488 BCN name registration information VA3 Design Inc. 42658 Contractor must verify all dimensions on the job and report any discrepancy to the Designer before proceeding with the work. All drawings and specifications are instruments of service and the property of the Designer which must be returned at the completion of the work. Drawings are not to be scaled.	<b>VA3 DESIGN</b> 255 Consumers Rd Suite 120 Toronto, ON M2J 1R4 t 416.630.2255 f 416.630.4782 va3design.com	<b>Greenpark.</b> project name RUSSELL GARDENS PH. 3 date APRIL 2020 drawn by GW	municipality WATERDOWN checked by Not to Scale	project no. 19014 drawing no. 14
---	--	-------------------------	--	--	--	---	---