

CONSTRUCTION SUMMARY			
Mountainview Heights 3 (G) - Russell Gardens Building Ltd.			
PURCHASER: IMRAN HABIB SYED		TEL: RES.: 416-317-4838	
LOT / PHASE 156 / 3	REG. PLAN # 62M-1266	HOUSE TYPE Mountainash Twelve Elev 3	BBA Line Location

CABINETRY

1 - KITCHEN - DELETE CABINETS ABOVE STOVE - VENDOR WILL SUPPLY 6 INCH VENT AS PER CONSTRUCTION SPECIFICATIONS AND VENT MAY NOT BE IN THE APPROPRIATE LOCATION FOR INSTALLATION OF PURCHASER SUPPLIED VENT - PURCHASER TO SUPPLY OWN FAN AFTER CLOSING 14Jun21 Note: TEMPORARY HOOD FAN MAY BE PROVIDED	
1 - CABINETRY - KITCHEN - CM11 CROWN MOULDING 14Jun21 Note:	
1 - CABINETRY - KITCHEN - UPGRADE 2 14Jun21 Note:	

CABINETRY ACCESSORIES

1 - KITCHEN CABINETRY UPPER - COUNTER TOP HUTCH SINGLE DOOR WITH DRAWER - PRICE IS EACH - UPGRADE 2 14Jun21 Note:	
1 - KITCHEN CABINETRY BASE - COOKTOP CABINET WITH POT DRAWERS (2 DRAWERS) - UPGRADE 2 14Jun21 Note:	
1 - KITCHEN CABINETRY - BUILT-IN MICROWAVE/OVEN COMBO - UPGRADE 2 14Jun21 Note:	
2 - KITCHEN CABINETRY UPPER - GLASS DOOR - GLK340 CORD GLASS - FINISHED INTERIOR - FITS TALL UPPER CABINETS ONLY - PRICE IS PER DOOR - UPGRADE 2 14Jun21 Note:	
1 - KITCHEN CABINETRY UPPER - ANGLED CORNER CABINET - FITS TALL UPPER CABINETS - PER UNIT - UPGRADE 2 14Jun21 Note:	
1 - KITCHEN CABINETRY BASE - PIE CUT CORNER CABINET - BASE CABINETRY - UPGRADE 2 14Jun21 Note:	
1 - KITCHEN CABINETRY BASE - POT/PAN DRAWERS (CABINET) - UPGRADE 2 14Jun21 Note:	
1 - PANTRY UNIT UPGRADE - TO GO FROM 300MM TO 600MM DEEP - PRICE IS PER FOOT - UPGRADE 2 14Jun21 Note:	
1 - KITCHEN CABINETRY UPPER - FULL DEPTH ABOVE FRIDGE - WITH GABLES - 600MM - PRICE IS EACH - UPGRADE 2 14Jun21 Note:	

CERAMIC TILE

1 - TILE - UPGRADE 1 WALL TILE - - BATHROOM 4 - SHOWER 14Jun21 Note:	
1 - TILE - UPGRADE 1 FLOOR TILE - - BATHROOM 4 - FLOOR 14Jun21 Note:	
1 - TILE - UPGRADE 1 FLOOR TILE - - BATHROOM 2/3 - FLOOR 14Jun21 Note:	
1 - TILE - UPGRADE 1 WALL TILE - - ENSUITE WALL TILE - SHOWER 14Jun21 Note:	
1 - TILE - UPGRADE 1 FLOOR TILE - - ENSUITE BATHROOM - FLOOR 14Jun21 Note:	
1 - TILE - UPGRADE 1 FLOOR TILE - - KITCHEN 14Jun21 Note:	
1 - TILE - UPGRADE 1 FLOOR TILE - - FOYER 14Jun21 Note:	

CONSTRUCTION SUMMARY				
Mountainview Heights 3 (G) - Russell Gardens Building Ltd.				
PURCHASER: IMRAN HABIB SYED			TEL: RES.: 416-317-4838	
LOT / PHASE	REG. PLAN #	HOUSE TYPE		
156 / 3	62M-1266	Mountainash Twelve Elev 3		

CONSTRUCTION

1 - SMOOTH CEILINGS ON FIRST FLOOR ONLY - DET	
14Jun21    Note:	

COUNTER TOP

1 - COUNTER TOP - UPGRADE - POWER ROOM VANITY - 4" BACKSPLASH	
14Jun21    Note:	
1 - COUNTER TOP - UPGRADE - POWER ROOM VANITY COUNTER TOP	
14Jun21    Note:	
1 - COUNTER TOP - UPGRADE - KITCHEN - BACKSPLASH	
14Jun21    Note:	
1 - COUNTER TOP - UPGRADE - KITCHEN COUNTER TOP	
14Jun21    Note:	

DOORS AND TRIM

1 - TRIM - UPGRADE 2- 7-¼" ONE STEP BASEBOARD AND 3" CASING - B/B ONE STEP	
14Jun21    Note:	
1 - DOOR - EXTERIOR - FRENCH - CLEAR GLASS - BOTH DOORS ARE OPERABLE - IN LIEU OF SLIDING PATIO DOOR	
03Jun21    Note:	

ELECTRICAL

1 - PLUG - ELECTRICAL PLUG WITH GFI	
14Jun21    Note:	
1 - PLUG - ELECTRICAL PLUG - TO BE INSTALLED OVER FIREPLACE	
14Jun21    Note:	
1 - RELOCATE STANDARD KITCHEN LIGHT TO BE CENTERED OVER ISLAND	
14Jun21    Note:	
1 - STANDARD DINING ROOM LIGHT TO BE CENTERED BETWEEN LIVING AND DINING ROOM	
14Jun21    Note:	
1 - BUILT IN OVEN AND COOKTOP PROVISION - PROVISION ONLY - ELECTRICAL ONLY	
14Jun21    Note:	

FIREPLACE AND ACCESSORIES

1 - GAS LINE ROUGH-IN FOR BARBECUE - FIRST FLOOR	
14Jun21    Note:	
1 - GAS LINE ROUGH-IN FOR STOVE (INCLUDES ELECTRICAL OUTLET) - FIRST FLOOR	
14Jun21    Note:	
1 - MANTEL - CAST STONE - AEQUALITAS 1 STYLE MANTEL	
14Jun21    Note:	
1 - OVERMANTEL - CAST STONE - ADD FOR GREY COLOUR	
14Jun21    Note:	
1 - OVERMANTEL - CAST STONE - FOR 10 FOOT CEILING	
14Jun21    Note:	

HARDWOOD FLOORING

1 - HARDWOOD - GROUP B SERIES 5 INCH - IN LIEU OF 2 1/4 INCH NATURAL RED OAK - - LIVING AND DINING ROOM	
14Jun21    Note:	



CONSTRUCTION SUMMARY				
Mountainview Heights 3 (G) - Russell Gardens Building Ltd.				
PURCHASER: IMRAN HABIB SYED			TEL: RES.: 416-317-4838	
LOT / PHASE 156 / 3	REG. PLAN # 62M-1266	HOUSE TYPE Mountainash Twelve Elev 3		
1 - HARDWOOD - GROUP B SERIES 5 INCH - IN LIEU OF 2 1/4 INCH NATURAL RED OAK - - LIBRARY/DEN 14Jun21 Note:				
1 - HARDWOOD - GROUP B SERIES 5 INCH - IN LIEU OF 2 1/4 INCH NATURAL RED OAK - - FAMILY ROOM 14Jun21 Note:				

PLUMBING

1 - SINK - VESSEL SINK - ABBE 14Jun21 Note: POWDER X1	
1 - WATER LINE FOR FRIDGE - ROUGH-IN ONLY 14Jun21 Note:	
1 - SINK - UNDERMOUNT SINK - BLANCO QUATRUS R15 U SUPER SINGLE #401518 14Jun21 Note:	
2 - TOE TESTER - ADD TOE TESTER TO SHOWER 14Jun21 Note: MASTER ENSUITE - X1 BEDROOM 4 ENSUITE - X1	

PROMOTIONAL

1 - LESS BALANCE OF CREDIT FROM PURCHASER EXTRA SHEET IN OFFER 14Jun21 Note:	
1 - LESS CREDIT FROM PURCHASER EXTRA SHEET IN OFFER 03Jun21 Note: NEW PROMO BALANCE \$17,835.00	

STAIRS AND RAILINGS

1 - V GROOVE HANDRAIL 14Jun21 Note:	
1 - EUROLINE CONTEMPORARY PICKETS 14Jun21 Note: BLACK IRON PICKETS	
1 - STAINED STAIRS – STANDARD STAIRCASE - PRICE IS PER SET 14Jun21 Note:	

CONSTRUCTION SUMMARY				
Mountainview Heights 3 (G) - Russell Gardens Building Ltd.				
PURCHASER: IMRAN HABIB SYED			TEL: RES.: 416-317-4838	
LOT / PHASE 156 / 3	REG. PLAN # 62M-1266	HOUSE TYPE Mountainash Twelve Elev 3		

EXTRAS AS PER OFFER

LIVING/DINING ROOM AND FLEX ROOM REDUCED BY (4) FOUR INCH AS PER THE LOT CONIDITON. INSERT ENGINEERING SKETCH DATED SEPTEMBER 11, 2020, AS ATTACHED. <i>Upgrade</i> Note:	
Purchase Price includes a walk up from the basement to the rear of the dwelling unit, and the obligation to construct the house with the walk up is subject to the Vendor?s approval, in its sole and unfettered discretion. The Purchaser acknowledges and ag <i>Worksheet</i> Note:	
200 AMP SERVICE LABELLED WITH CIRCUIT BREAKER PANEL TO UTILITY AUTHORITY STANDARDS. <i>Worksheet</i> Note:	
PURCHASER(S) ACKNOWLEDGES THAT THE PURCHASE PRICE IS INCLUSIVE OF ALL CREDITS AND PROMOTIONAL PACKAGES AVAILABLE AT TIME OF PURCHASE. <i>Worksheet</i> Note:	
(1) The Vendor agrees that notwithstanding any other term or provision in this Agreement included in the Purchase Price and in addition to those items detailed in Schedule GP to the Agreement of Purchase and Sale, the Purchaser is entitled to a credit of <i>Worksheet</i> Note:	
Purchase Price includes 4 enlarged basement windows, and the obligation to construct the house with the enlarged basement windows is subject to the Vendor?s approval, in its sole and unfettered discretion The Purchaser acknowledges and agrees that the lo <i>Worksheet</i> Note:	
10 foot ceiling height on Main Floor. The Purchaser acknowledges that as a result of the increased ceiling height from the Vendor?s standard ceiling height, various modifications to the interior and exterior of the dwelling unit may be made, including bu <i>Worksheet</i> Note:	

This Document is Extremely Time Sensitive - Printed 5 Jul 21 at 12:24



STAINLESS STEEL 36" CUSTOM HOOD LINER

Signature Features

JXL6536HSS

OPTIONAL 600 CFM OR 1,200 CFM INTERNAL BLOWER

Three-speed blower – ordered separately – rapidly rids the air of smoke, steam and cooking odors so the air is fresh and clean.

DISHWASHER-SAFE STAINLESS STEEL BAFFLE FILTERS

These stainless steel baffle filters, which effectively capture smoke, grease and cooking odors as they're drawn through the hood, can be easily cleaned in the dishwasher.

TWO LIGHTING LEVELS

Two different settings give you the appropriate level of lighting as you cook.

OPTIONAL 1,200 CFM IN-LINE BLOWER

Quickly removes smoke, steam and cooking odors from the kitchen and mounts further down the duct run to help reduce the noise of the ventilation system in the kitchen.

CUSTOM HOOD LINER

This hidden ventilation system mounts to the inside of a custom-built vent covering that can blend into the kitchen's design or be highlighted as a visual feature of the kitchen.

THREE FAN SPEED SETTINGS

Provides a range of ventilation power to accommodate your precise cooking needs.

10-INCH ROUND EXTERIOR VENTING

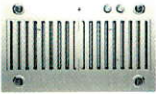
Large-diameter venting that enables quiet airflow and effective performance.

LUSTRE STAINLESS

Blur the lines of temptation with mind-bending curves and hairpin corners of stainless steel that will leave you reeling.

AUTO SENSE OPTION

Automatically turns the ventilation system on and adjusts power as needed.



Dimensions

Depth: 22.0 in

Height: 11-1/2 in

Net Weight: 32 lbs

Width: 35-7/8 in

Electrical

Power Cord Included: Yes

Design Type

Design Expression: Stainless Steel

Technical Specifications

Certifications

Energy Star® Qualified: No

Prop 65: Standard

Configuration and Overview

Size: 36 in

Hood Type: Custom Hood Liners

Details

Night Light Type: Halogen

Number of Night Light Settings: 1

Number of Task Light Settings: 1

Task Light Type: Halogen

Task Lighting: Yes

Night Light: Yes

Ventilation System

Duct Outlet Size: 10

Duct Type: Round

Number of Speeds: 3

GDS

isBaseUnit: true

GPC Code: 10005322

isConsumerUnit: true

IsInvoiceUnit: true

IsOrderableUnit: true

Product Type: EA

UDEX: 1100642102





# NOIR™ 30" BUILT-IN MICROWAVE OVEN WITH SPEED-COOK

## Signature Features

### 4.3-INCH FULL COLOR LCD DISPLAY

A highly interactive, full-color LCD touchscreen is packed with dynamic features that allow you to navigate effortlessly through settings and cooking options including temperature and cooking mode.

### 1.4 CU. FT. MICROWAVE CAPACITY

Explore your options. There's room for whatever you're craving.

### 900-WATT MICROWAVE ELEMENT

Harness 900 watts of microwave energy to rapidly cook and reheat a variety of foods.

### SEAMLESS TOUCHES

Seamlessly designed. Concealed details melt into their stainless steel surround, as shiny interiors and glass expanses pull you in.

### CONVECTION & MICROWAVE COMBINATION COOKING

Let your appetite run wild—broil, bake or warm with convection and microwave energy.

### SPEED-COOK

Renounce accepted limitations of the microwave. Three potent methods converge to deliver convection's steady heat, microwave speed and broiled caramelization in each oven-caliber bite.

### STAINLESS STEEL MICROWAVE INTERIOR

Wrapped in luminous steel, intrinsic beauty is reflected in every corner.

### 1,200-WATT CONVECTION ELEMENT

This 1,200-watt element surrounds your cravings with circulating, consistent heat until baked to your satisfaction.

### SENSOR COOKING

This intuitive sensor detects humidity released by food as it cooks, determining the precise cooking time and power level for optimal doneness of each dish.

JMC2430IM



## Technical Specifications

### Configuration and Overview

Size: 30 in

Microwave Type: Built-In

### Microwave Details

Sensor Cooking: Yes

Cooking Power: 900 w

Cavity Finish: Stainless

Convection: Yes

Convection Power: 1200 w

Grill: Yes

Grill Power: 1600.0 w

Interior Light: No

Number or Racks: 1

Turntable: Stoppable

Turntable Diameter Size: 14-1/8 in

Scrolling Electronic Display: No

### Details

Number of Power Levels: 10

Clock: Yes

Night Light: No

### Certifications

Prop 65: Standard

### Compatibility

Connectivity: No

### Configuration

Microwave Configuration: Built-In

### Microwave

### Microwave Selections:

- Add 30 Seconds
- Auto Cook

### Dimensions

Capacity: 1-2/5

Depth With Door Open 90 Degree: 35-5/8 in

Depth: 24-3/4 in

Height: 19-7/8 in

Net Weight: 90 lbs

Width: 29-3/4 in

### Controls

Number of Quick Touch/One-Touch Selections: 1

Convenience Cooking Controls: Yes

Location of Controls: Top

### Design Type

Design Expression: NOIR™

### Electrical

Watts: 3300

- Beverage
- Control Lock
- Convect
- Cook
- Cook Power
- Cook Time
- Crisp Pan
- Defrost
- Dinner Plate
- End of Cycle Signal
- Fresh Vegetable
- Frozen Vegetable
- Frozen Entree
- Grill
- Keep Warm
- Kids Menu
- Languages - English/French
- Off/Cancel
- Pizza
- Popcorn
- Potato
- Reheat
- Soften/Melt
- Sound On/Off
- Soup
- Speed Cook
- Steam
- Timer

®/™ © 2021 JennAir. All rights reserved. Specifications subject to change without notice.



# NOIR™ 30" SINGLE WALL OVEN WITH V2™ VERTICAL DUAL-FAN CONVECTION

## Signature Features

### IRRESISTIBLE INTERIOR

Captivation cloaked in black. Beyond a dark glass expanse, cinematic lighting illuminates smooth racks, flat tines, and an enticing jet black interior.

### SEAMLESS TOUCHES

Seamlessly designed. Concealed details melt into their stainless steel surround, as dark interiors and glass expanses pull you in.

### SMOOTH CLOSE DOOR

Quiet, soft, secure. Your oven gently pulls the door closed.

### 7-INCH FULL COLOR LCD DISPLAY

Visually vibrant. This highly-interactive, full-color display is packed with dynamic features that allow you to navigate effortlessly through settings and the JennAir® Culinary Center.

### GLIDE RACK

Smooth moves. Glides in and out fluidly and quietly, even when fully loaded.

### 5.0 CU. FT. CAPACITY

Big on entertaining. Generous capacity to cook multiple dishes at once.

### CINEMATIC LIGHTING

Lights, camera, cook. Halogen lighting increases to full intensity, minimizing shadows and dramatically showcasing food.

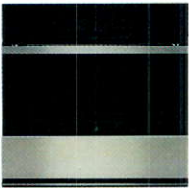
### CHEF'S LIGHT

Food shown in its best light. This third halogen lamp shines above the door, front and center, further reducing shadows for clear illumination.

### V2™ VERTICAL DUAL-FAN CONVECTION

Dual counter-rotating vertical fans work in tandem, helping you wield your cooking prowess with everything from mouthwatering fillets to irresistible roasts.

JJW3430IM



## Dimensions

- Capacity: 5.00
- Depth Closed Excluding Handles: 24-5/16 in
- Depth Closed Including Handles: 26-3/8 in
- Depth Excluding Doors: 23.0 in
- Depth With Door Open 90 Degree: 45-7/16 in

- Depth: 23-1/4 in
  - Height: 29-7/8 in
  - Net Weight: 158 lbs
  - Width: 30.0 in
- ## Electrical

- Power Cord Included: No
  - Watts: 4500
- ## Design Type
- Design Expression: NOIR™

## Technical Specifications

### Configuration and Overview

- Size: 30 in
  - Fuel Type: Electric
  - Installable Under Cooktop: Yes
  - LP Convertible: No
  - Oven Type: Single
- ## Oven Details
- Door Lock: Yes
- Oven Selections:
- Audible Signal
  - Bake
  - Broil
  - Cancel/Off
  - Clock
  - Control Lock
  - Cook and Hold
  - Cook Time Indicator
  - Delay Start
  - Favorites
  - Warm Hold
  - Language Conversion
  - Proofing
  - Rapid Preheat
  - Sabbath Mode
  - Slow Cook
  - Start Time
  - Stop Time
  - Temperature Probe
  - Temperature Conversion
  - Temperature-Sensor Baking
  - Timer
- Power On Indicator Light: Yes
- Language Conversion: English/French
- Automatic Shut-Off: Yes
- Door Broil Position: Closed
- Oven Cooking System: Convection
- Interior Color: Black

### Oven Details

- Interior Coating: Porcelain
  - Light Control: Oven Light Touch Pad
  - Light Type: Halogen
  - Broiler Location: Top of Oven
  - Self-Cleaning Oven Racks: No
  - Delay Clean: Yes
  - Oven Interior Width: 25.0 in
  - Oven Interior Depth: 19.0 in
  - Oven Interior Height: 18.0 in
  - Hidden Bake Element: Yes
  - Convection Functions: Bake Broil Roast Upper
  - Number of Bake Elements: 1
  - Number of Broil Elements: 1
- ## Appearance
- Handle Material: Stainless Steel
- Flush Installation Approved: Yes
- ## Certifications
- Prop 65: Standard
- ## Compatibility
- ## Connectivity:
- Amazon Alexa
  - Android
  - Google Assistant
  - iOS
  - Nest
  - Siri
- ## Works With:
- WiFi
  - App
  - Remote Access
  - Voice Controlled

### Details

- Bake Element Power: 2800W/2427W
- Number of Oven Racks: 3



Oven Cleaning Type: Self-Cleaning

Convection Element Type: Dual-Fan

Number of Rack Guides: 6

®/™ © 2021 JennAir. All rights reserved. Specifications subject to change without notice.



NOIR™ 36" GAS RANGETOP

Signature Features

JGCP436HM

14 RANGETOP CONFIGURATIONS

Bend fire to your will. Grills, griddles, brass burners. Three widths. With 14 unique configurations, it's up to you. Cast off porous, superficially plated options. Go deeper. Infused with chrome, our griddle cleans up well after heavy usage. Undereath, a serpentine element powers our best griddle preheat. Fire up the grill for indoor entertainment on your terms.

CAST IRON GRATES

Robust geometric grates form one graceful surface, crafted to withstand heavy woks and cookware.

9,000 BTU DUAL-STACKED POWERBURNER

A dual-stacked PowerBurner that reaches a maximum power level of 9,000 BTU and fulfills most everyday cooking functions with turndown of 1,000 BTU.

HALO-EFFECT KNOBS

A halo of luminary LEDs glows softly when the burner is lit or the oven is on.

20,000 BTU STACKED POWERBURNER

This luxury rangetop's powerful burner delivers exceptionally high heat for cooking methods such as flash frying and wok cooking.

ELECTRONIC IGNITION WITH FLAME-SENSING™ REIGNITION

Burnout banned. If a sudden draft blows out a flame, intelligent Flame-Sensing™ reignition automatically sparks it back to life.

DUAL-STACKED POWERBURNERS

Two stacked, symmetrical flames bloom and retreat at your inclination, offering total control over heat levels. High-heat searing and wok cooking. Low, slow simmer and melt. Infinite intermediate settings satisfy every appetite.

18,000 BTU DUAL-STACKED POWERBURNER

This 18,000 BTU dual-stacked PowerBurner can handle high-powered cooking while still being gentle enough for delicate simmering with turndown of 1,650 BTU.



Dimensions

Depth: 27-1/2 in  
Height: 7-7/16 in  
Maximum Height: 11-15/16 in  
Net Weight: 104 lbs

Width: 35-3/4 in

Controls

Knob Color: Stainless Steel  
Infinite Heat Controls: No  
Knob Type: Metal

Location of Controls: Front

Electrical

Power Cord Included: Yes  
208V Compatible: No

Design Type

Design Expression: NOIR™

Technical Specifications

Configuration and Overview

Size: 36 in  
Cooktop Type: Rangetop  
Fuel Type: Gas  
LP Convertible: Yes - Kit Included  
Installs Over Built-In Oven: No  
Power Boost: No

Cooktop Details

Automatic Pan Detection: No  
Downdraft Vent: No  
Heating Element On Indicator Light: No  
Hot Surface Indicator Light: No  
Left Front Element-Burner Power: 20,000 BTU  
Cooktop Element Style: Sealed Burner  
Cooktop Surface Color: Black  
Ignition Type: Flame-Sensing™ Re-ignition

Cooktop Details

Number of Cooking Element-Burners: 6  
Number of Grates: 3  
Grate Details:

- Dishwasher Safe
- Matte Finish
- Porcelain Coated Cast Grates
- Continuous

Right Front Element-Burner Type: Dual

Appearance

Digital Display: No

Certifications

Prop 65: Standard

Features

Power Outage Compatible: Yes (Gas Cooktop Burners Only)

Details

Cooktop Surface Material: Porcelain Coated Steel



# RISE™ 72” COUNTER-DEPTH FRENCH DOOR REFRIGERATOR WITH OBSIDIAN INTERIOR

## Signature Features

JFFCC72EHL

### OBSIDIAN INTERIOR

Showcases food items throughout the refrigerator, and provides a sharper contrast than white interiors. Includes coordinating crisper drawers and freezer.

### 72-INCH HEIGHT

Fills the 3-inch gap traditional 69-inch tall refrigerators leave under a standard cabinet.

### AUTOMATIC ICE MAKER

Provides a continuous supply of fresh ice made from filtered water.

### WIFI CONNECTIVITY

Allows monitoring and adjustment of basic refrigerator functions such as refrigerator and freezer temperatures through an app for iOS or Android devices. Requires WiFi and account creation. Subject to terms of service available at: jennair.com/connect. Data rates may apply.

### ADJUSTABLE DOOR BINS WITH METAL ACCENTS

Refrigerator door bins can be positioned to accommodate a variety of container sizes.

### COUNTER-DEPTH DESIGN

A freestanding refrigerator configuration in which only the doors and handles extend beyond the base cabinet, creating an integrated design ideal for maximizing kitchen space.

### TWIN FRESH™ CLIMATE CONTROL SYSTEM

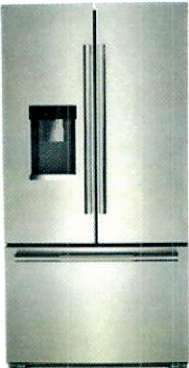
Features separate evaporators in the refrigerator and freezer compartments that maintain independent temperature control, and maintain humidity two times that of our refrigerators with shared cooling.

### ADJUSTABLE, CLEAR GLASS SHELVES

Glass shelves complement the LED lighting for exceptional clarity that allows more light to fill the interior. The front of the shelf has metal trim that accents the Obsidian interior.

### ELECTRONIC TEMPERATURE-CONTROLLED PANTRY DRAWER

A dedicated storage drawer with electronic control which provides precise, independent temperature control for sensitive foods.



## Dimensions

- Freezer Volume: 6.30 cu. ft.
- Refrigerator Volume: 17.50 cu. ft.
- Capacity: 23-4/5
- Total Volume: 23.8 cu. ft.
- Cabinet Width: 35-3/4 in
- Depth Closed Excluding Handles: 29-5/16 in
- Depth Closed Including Handles: 31-1/4 in
- Depth Excluding Doors: 24-5/8 in
- Depth With Door Open 90 Degree: 44.0 in
- Depth: 29-5/16 in
- Height To Top Of Cabinet: 70-15/16 in
- Height To Top Of Door Hinge: 71-15/16 in
- Height: 71-15/16 in
- Net Weight: 365 lbs
- Width: 35-3/4 in

## Controls

- Control Lockout: No
- Door Ajar/Open Alarm: Yes
- Location of Controls: Side Door
- Automatic Defrost: Yes
- Design Type

Design Expression: RISE™

## Technical Specifications

### Configuration and Overview

- Counter Depth: Yes
- Number of Doors: 3
- Installation Option: Freestanding
- Appearance

- Hidden Hinge: No
- Handle Material: Metal
- LCD Touch Screen: No
- Door Style: Contour
- Reversible Door: No
- Cabinet Finish: Textured

### Filter Details

- Water Filter Indicator/Reset: Yes
- Water Filter Location: Interior
- Produce Preserver: Yes
- Refrigerator Details

- Number of Interior Shelves: 3
- Supplementary Containers: Herb Tender™ Container
- Lighting: LED
- Dispenser Details

Dispenser Type: Exterior Water Only

### Dispenser Details

- Dispenser Options:
  - Control/Child Lock
  - Favorite Fill
  - Filtered Ice
  - Filtered Water
  - Night Light

Types of Ice: Cubed

### Icemaker Details

Icemaker Location: Refrigerator Door

### Certifications

- Prop 65: Standard
- Compatibility

- Connectivity:
  - Android
  - iOS

- Works With:
  - WiFi
  - App
  - Remote Access

### Exterior

- Handle Type: Reach-Through Handle
- Freezer Compartment

- Freezer Type: 1 Tier
- Light: LED

### Description

- Type of Refrigerator: French Door
- Configuration

- Installation Configuration: Freestanding
- Icemaker

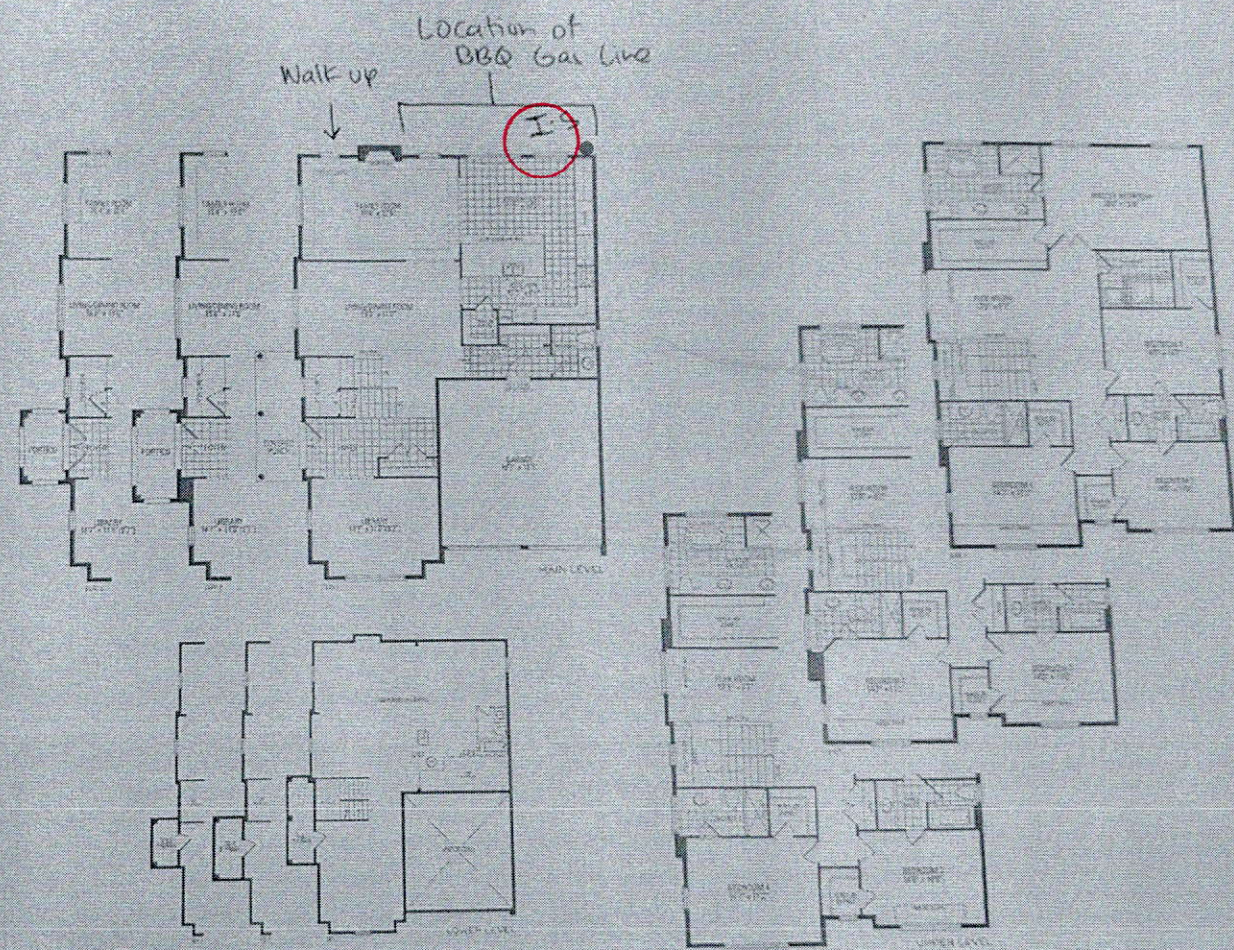


---

Icemaker: Factory Installed

®/™ © 2021 JennAir. All rights reserved. Specifications subject to change without notice.





**MOUNTAINASH TWELVE** ELEV. 1 - 3,125 sq. ft. | ELEV. 2 - 3,143 sq. ft. | ELEV. 3 - 3,125 sq. ft.

[illegible]



CONTEMPORARY  
STONE PATTERN

WOOD GRAIN  
STUCCO FINISH

MAIN BRICK

STUCCO W/  
REVEALS



18	.	.	9	.	.
17	.	.	8	.	.
16	.	.	7	.	.
15	.	.	6	.	.
14	.	.	5	.	.
13	.	.	4	.	.
12	.	.	3	ISSUED FOR PERMIT.	APR 08/20
11	.	.	2	UPDATED PER ENG & CLIENT COMMENTS.	APR 06/20
10	description	date by no.	1	PRELIMINARY ISSUED FOR CLIENT REVIEW.	JAN 28/20
9	.	.	.	.	date

The undersigned has reviewed and takes responsibility for this design and has the qualifications and meets the requirements set out in the Ontario Building Code to be a Designer.	
qualification information	
Richard Vink	244
name	B
signature	
registration information	
VAS Design Inc.	426
Contractor must verify all dimensions on the job and report any discrepancy to the Designer before proceeding with the work. All drawings and specifications are instruments of service and the property of the Designer which must be returned at the completion of the work. Drawings are not to be copied.	



# Greenpark

project name <b>RUSSELL GARDENS PH. 3</b>	municipality <b>HAMILTON</b>	project no. <b>19014</b>
date <b>JANUARY 2020</b>	REAR ELEVATION - ELEV. 3	
drawn by <b>DB</b>	checked by <b>-</b>	scale <b>3/16" = 1'-0"</b>
file name <b>19014-MOUNTAINASH-12-15E</b>		<b>A7b</b>
<small>DATE = 1/14/2020 10:00:00 AM 2020 19014-CUSTOMER-CHECKED-MOUNTAINASH-12-15E 19014-MOUNTAINASH-12-15E.dwg - Tue - Sep 8 2020 - 3:18 PM</small>		

All device specifications, related documents and design are the copyright property of VAS DESIGN. Reproduction of this property in whole or in part is strictly prohibited without VAS DESIGN's written permission.