

CONSTRUCTION SUMMARY

Mountainview Heights 3 (G) - Russell Gardens Building Ltd.

PURCHASERS: Rekha KONDURU and Vamsee Krishna SANGARAJU

TEL: RES.: 647-919-6625

LOT / PHASE	REG. PLAN #	HOUSE TYPE		
257 / 3	62M-1266	Mountainash Six (5 Bedroom) Elev 3		

CABINETRY

1 - KITCHEN - DELETE CABINETS ABOVE STOVE - VENDOR WILL SUPPLY 6 INCH VENT AS PER CONSTRUCTION SPECIFICATIONS AND VENT MAY NOT BE IN THE APPROPRIATE LOCATION FOR INSTALLATION OF PURCHASER SUPPLIED VENT - PURCHASER TO SUPPLY OWN FAN AFTER CLOSING 04May21 Note: TEMPORARY HOOD FAN MAY BE PROVIDED	
---	--

CABINETRY ACCESSORIES

1 - KITCHEN CABINETRY BASE - COOKTOP CABINET WITH POT DRAWERS (2 DRAWERS) - STANDARD 04May21 Note:	
1 - ***DELETE - KITCHEN CABINETRY BASE - COOKTOP CABINET WITH FULL HEIGHT DOORS - STANDARD *** 04May21 Note:	
1 - KITCHEN - SERVERY - CREATE OPENING FOR FUTURE WINE FRIDGE 04May21 Note:	
1 - KITCHEN CABINETRY UPPER - FULL DEPTH ABOVE FRIDGE - WITH GABLES - 600MM - PRICE IS EACH - STANDARD 04May21 Note:	
1 - PANTRY UNIT UPGRADE - TO GO FROM 300MM TO 600MM DEEP - PRICE IS PER FOOT - STANDARD 04May21 Note:	
1 - KITCHEN CABINETRY - BUILT-IN MICROWAVE/OVEN COMBO - STANDARD 04May21 Note:	
1 - KITCHEN CABINETRY BASE - COOKTOP CABINET WITH FULL HEIGHT DOORS - STANDARD 04May21 Note:	

CERAMIC TILE

1 - DELETE ALL CERAMIC BATHROOM ACCESSORIES - DELETE TOWEL BAR, PAPER HOLDER & SOAP DISH - MASTER ENSUITE BATHROOM ONLY 04May21 Note:	
--	--

CONSTRUCTION

1 - SMOOTH CEILINGS ON FIRST FLOOR ONLY - DET 27Jul21 Note:	
4 - ENLARGE BASEMENT WINDOWS (MAY REQUIRE WINDOW WELLS) - WINDOW IS 30 INCHES X 24 INCHES 04Aug20 Note: IF CONSTRUCTION PERMITS	

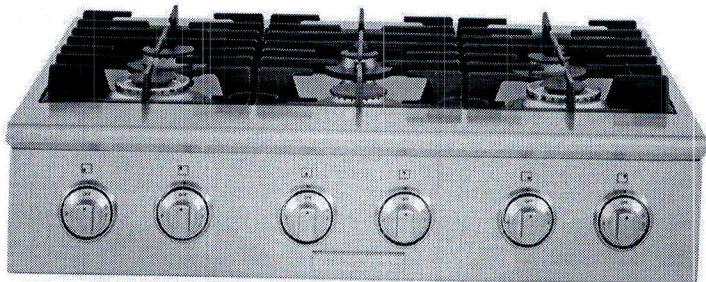
ELECTRICAL

1 - PLUG - ELECTRICAL PLUG WITH GFI AND SWITCH - FOR FESTIVE LIGHTING 27Jul21 Note:	
1 - LIGHT AND SWITCH - NO FIXTURE INCLUDED - LIVING ROOM 04May21 Note:	
1 - ***DELETE - STANDARD DINING ROOM LIGHT TO BE CENTERED BETWEEN LIVING AND DINING ROOM *** 04May21 Note:	
1 - PLUG - ELECTRICAL PLUG - FOR WINE FRIDGE 04May21 Note:	

Gas Slide-In Cooktop

professional series

E36GC76PRS



PRODUCT DIMENSIONS

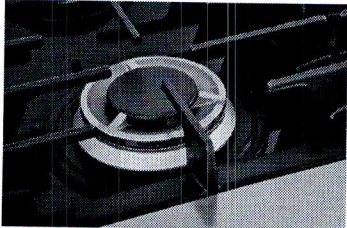
Width	35-7/8"
Depth	25"
Height	7-3/4"

MORE EASY-TO-USE FEATURES

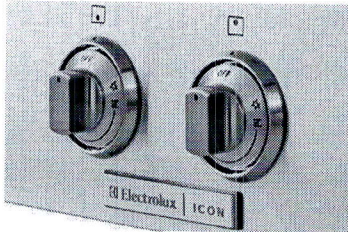
- Sealed Power Burners
- Black Ceramic Glass Cooking Surface
- Pilotless Ignition

A.D.A. Compliant
When properly installed, this model is A.D.A.-qualified based on the United States Access Board's A.D.A./A.B.A. Accessibility Guidelines and the Department of Justice's 2010 A.D.A. Standards for Accessible Design.

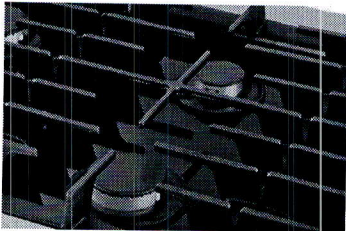
Signature Features



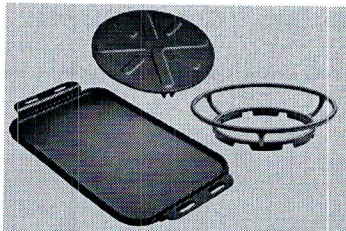
Min-2-Max Burners®
With the widest range of BTU performance in the industry, these best-in-class dual-flame sealed burners offer unrivaled versatility — from a roaring 20,000-BTU boil to a gentle 1,100-BTU simmer.



Professional-Style Controls
Large 270 degree knobs give you precise control while cooking, so you get the results you want.



Continuous Grates
Designed for cooking multiple dishes at varying temperatures on a single cooktop, continuous grates allow you to move even the heaviest pots and pans from burner to burner with the utmost ease.



Versatile Cooking Accessories
Interchangeable accessories include a griddle plate, a special wok ring and simmer plate — so you can customize the cooktop to fit your cooking needs.

BURNER	BTU
Right Front	20,000 – 1,100
Right Rear	9,500
Left Front	20,000
Left Rear	14,000
Center Front	14,000
Center Rear	9,000 – 1,500

Gas Slide-In Cooktop

E36GC76PRS professional series



Electrolux

ICON

36" GAS SLIDE-IN COOKTOP

Configuration	6 Sealed Burners
---------------	------------------

FEATURES

Formed Stainless Steel Platform	Yes
Professional-Style Controls	Yes
Min-2-Max Burners® (BTU)	2 (20,000 – 1,100)
Sealed Power Burner™ (BTU)	2 (14,000)
Sealed Burner (BTU)	1 (9,500)
Sealed Precision Burner™ (BTU)	1 (5,000 – 1,500)
Linear Flow Burner Valves	Yes
Electronic Pilotless Ignition	Yes
Continuous Grates	3
A.D.A. Compliant*	Yes

ACCESSORIES

Griddle	Included
Wok Ring	Included
Simmer Plate	Included
LP Gas Conversion Kit	Included
9" Stainless Steel Backguard – PN# 903048-9010	Included
Depth Adjustment Filler Kit** – PN# 903051-9010	Optional

SPECIFICATIONS

Gas Inlet/Power Supply Location	Right Rear
Voltage Rating	120V/60 Hz
Connected Load (kW Rating) @ 120 Volts†	0.12
Electrical Cable	Included
Approved for Single Oven Combination Installation***	No
Shipping Weight (Approx.)	120 Lbs.

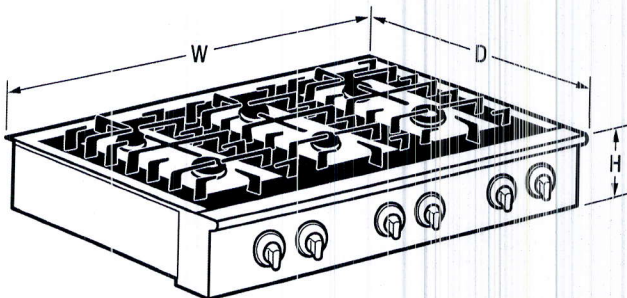
*When properly installed, this model is A.D.A.-qualified based on the United States Access Board's A.D.A./A.B.A. Accessibility Guidelines and the Department of Justice's 2010 A.D.A. Standards for Accessible Design.

**When replacing an existing cooktop with countertop cutout deeper than 7-1/4" and less than 8-1/2", order free Depth Adjustment Filler Kit.

***Not approved to be used over any Electrolux ICON® Single Wall Oven.

†For use on adequately wired 120V, dedicated circuit having 2-wire service with a separate ground wire. Appliance must be grounded for safe operation.

NOTE: Always consult local and national electric and gas codes. Refer to Product Installation Guide for detailed installation instructions on the web at electroluxicon.com. Specifications subject to change.



NOTE: Always consult local and national electric and gas codes. Refer to Product Installation Guide for detailed installation instructions on the web at electroluxicon.com.



PRODUCT DIMENSIONS

Width	36" 7/8"
Depth	25"
Height	7-3/4"

Electrolux Major Appliances, N.A.

USA • 10200 David Taylor Drive • Charlotte, NC 28262 • 1-877-4electrolux (1-877-435-3287) • electroluxicon.com
CANADA • 5855 Terry Fox Way • Mississauga, ON L5V 3E4 • 1-800-265-8352 • electroluxicon.ca

E36GC76PRS 03/16

© 2016 Electrolux Home Products, Inc.

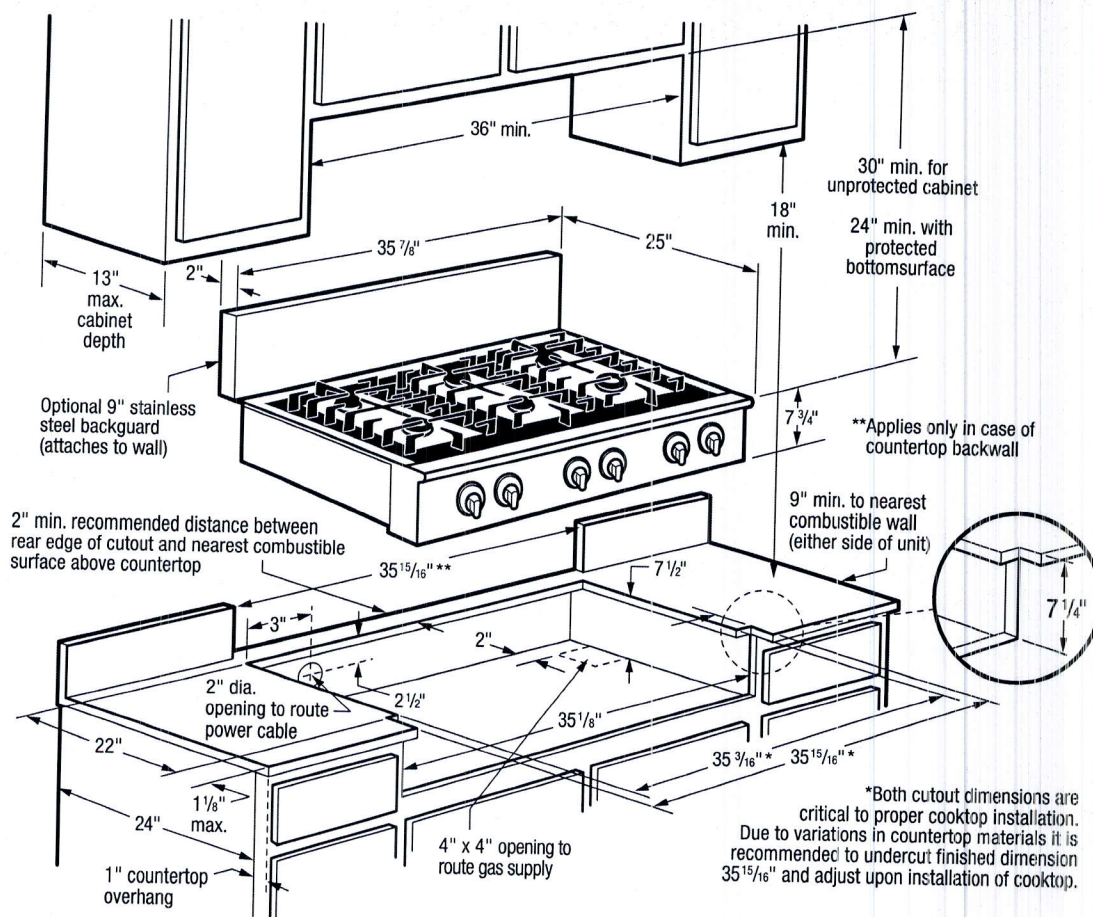
High standards of quality at Electrolux Home Products, Inc. mean we are constantly working to improve our products. We reserve the right to change specifications or discontinue models without notice.

Gas Slide-In Cooktop

E36GC76PRS professional series



Electrolux ICON



36" Gas Slide-In Cooktop Specifications

- Product Weight – 115 Lbs.
- Voltage Rating – 120V/60 Hz
- Connected Load (kW Rating) @ 120 Volts = 0.12kW
(For use on adequately wired 120V, dedicated circuit having 2-wire service with a separate ground wire. Appliance must be grounded for safe operation.)
- Amps @ 120 Volts = 0.008A
- Always consult local and national electric and gas codes.
- Cooktop ships with 3/4" factory regulator.
- LP Gas conversion kit supplied.
- Plan installation to have electrical connection, gas shutoff valve, and pressure regulator accessible from front of cabinet. Locate 120V grounded outlet in a 4"W x 5"H area on rear wall, 16" above floor, aligned center with cooktop.
- Cabinet and/or countertop must completely enclose recessed portion of cooktop. Respect cutout dimensions and clearances and ensure that all contact surfaces are solid and level.
- Overhead cabinetry should not exceed a 13" maximum depth.
- Allow 30" minimum clearance between top of cooktop and bottom of unprotected wood or metal overhead cabinetry.
- Absolute minimum horizontal distance between overhead cabinets installed to either side of appliance must be no less than maximum width of appliance.
- Allow 24" minimum clearance when bottom of wood or metal overhead cabinet is protected by not less than 1/8" flame-retardant millboard covered with not less than No.28 MSG sheet steel, 0.015" stainless steel, 0.024" aluminum or 0.020" copper.

- Allow 2" minimum clearance between rear edge of cooktop and nearest combustible surface above countertop. If required clearance can not be maintained, then optional stainless steel backguard or noncombustible backguard material must be used — otherwise installation will require custom cabinet and countertop dimensions.
- Allow 9" minimum clearance from edge of cooktop to nearest combustible wall on either side of unit.
- It is recommended that drawers not be used beneath cooktop.
- To reduce risk of fire when using overhead cabinetry, install vent hood that projects horizontally a recommended minimum of 7" beyond bottom of cabinets.
- Gas Slide-In Cooktop model E36GC76PPS is NOT approved to be used over any Electrolux ICON® Single Wall Oven.

Note: For planning purposes only. Refer to Product Installation Guide on the web at electroluxicon.com for detailed instructions.

Optional Accessories

- When replacing an existing cooktop with countertop cutout deeper than 7-1/4" and less than 8-1/2", order free Depth Adjustment Filler Kit -- (PN# 903051-9010).
- 9" Stainless Steel Backguard -- (PN# 903048-9010).



Electrolux Major Appliances, N.A.

USA • 10200 David Taylor Drive • Charlotte, NC 28262 • 1-877-4electrolux (1-877-435-3287) • electroluxicon.com
CANADA • 5855 Terry Fox Way • Mississauga, ON L5V 3E4 • 1-800-265-8352 • electroluxicon.ca

E36GC76PRS 03/16

© 2016 Electrolux Home Products, Inc.

High standards of quality at Electrolux Home Products, Inc. mean we are constantly working to improve our products. We reserve the right to change specifications or discontinue models without notice.

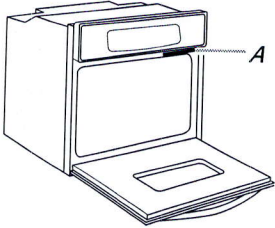
27" (68.6 CM) AND 30" (76.2 CM) ELECTRIC SINGLE AND DOUBLE BUILT-IN OVEN

PRODUCT MODEL NUMBERS

KODE300E	KODT100E	KOST100E
KODE307E	KODT107E	KOST107E
KODE500E	KOSE500E	KEBS109E
KODE507E	KOSE507E	KEBS209E

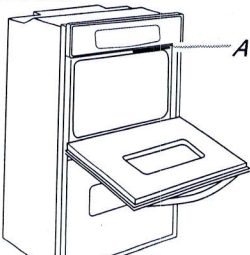
Electrical: To properly install your oven, you must determine the type of electrical connection you will be using and follow the instructions provided for it here.

- Oven must be connected to the proper electrical voltage and frequency as specified on the model/serial number rating plate. The model/serial number rating plate is located under the control panel on single ovens and under the control panel on the upper oven cavity on double ovens. See the following illustrations.



Single Oven

A. Model/serial number plate



Double Oven

A. Model/serial number plate

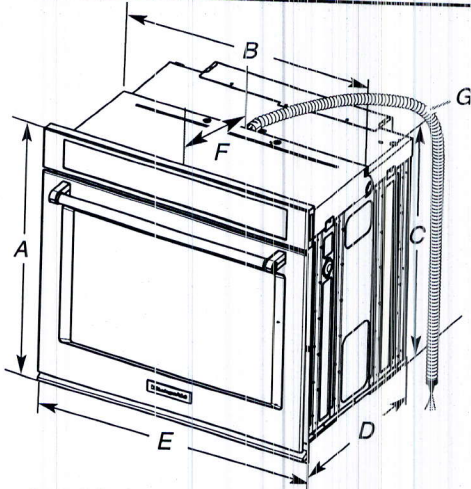
- Models rated from 7.3 to 9.6 kW at 240 volts (5.4 to 7.4 kW at 208 volts) require a separate 40-amp circuit. Models rated at 4.8 kW and below at 240 volts (3.6 kW and below at 208 volts) require a separate 20-amp circuit.
- A circuit breaker is recommended.
- Connect directly to the circuit breaker box (or fused disconnect) through flexible, armored or nonmetallic sheathed, copper cable (with grounding wire). See "Make Electrical Connection" section.
- Flexible conduit from the oven should be connected directly to the junction box.
- Fuse both sides of the line.
- Do not cut the conduit. The length of conduit provided is for serviceability of the oven.
- A UL listed or CSA approved conduit connector must be provided.
- If the house has aluminum wiring, follow the procedure below:
 - Connect a section of solid copper wire to the ends of the flexible conduit leads.
 - Connect the aluminum wiring to the added section of copper wire using special connectors and/or tools designed and UL listed for joining copper to aluminum.

Follow the electrical connector manufacturer's recommended procedure. Aluminum/copper connection must conform with local codes and industry accepted wiring practices.

For power requirements for models KOST107E, KOST100E, KOSE507E, KOSE500E, KODE307E, KODE300E, KODE507E, KODE500E, KODT100E and KODT107E, refer to the following table.

Voltage	Single Thermal	Single Convect	Double Thermal	Double Convect	Double Convect/Thermal
240 VAC	4100 W	4100 W	8163 W	8300 W	8300 W
208 VAC	3100 W	3100 W	6300 W	6300 W	6300 W
240 VAC	17.2 A	17.2 A	34.2 A	34.2 A	34.2 A
208 VAC	15.0 A	15.0 A	29.9 A	29.9 A	29.9 A

PRODUCT DIMENSIONS

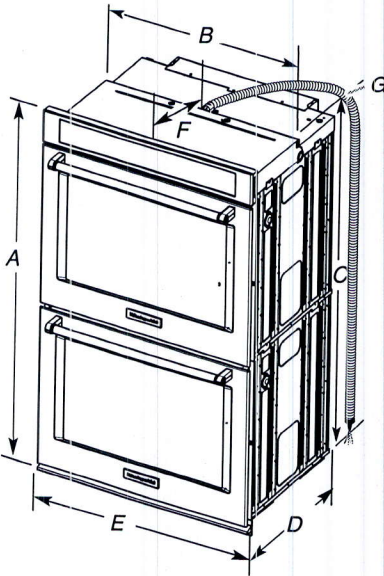


27" (68.6 cm) models

- A. 28³/₄" (72.8 cm) max. overall height
- B. 25⁷/₁₆" (64.6 cm) max. recessed width
- C. 26³/₄" (67.9 cm) recessed height
- D. 23¹/₄" (59.1 cm) max. recessed depth
- E. 27" (68.6 cm) overall width
- F. 12" (30.5 cm) from back of control panel to start of strain relief
- G. 48" (121.9 cm) flexible conduit length

30" (76.2 cm) models

- A. 28³/₄" (72.8 cm) max. overall height
- B. 28¹/₂" (72.4 cm) max. recessed width
- C. 26³/₄" (67.9 cm) recessed height
- D. 23¹/₄" (59.1 cm) max. recessed depth
- E. 30" (76.2 cm) overall width
- F. 12" (30.5 cm) from back of control panel to start of strain relief
- G. 48" (121.9 cm) flexible conduit length



27" (68.6 cm) models

- A. 51¹/₁₆" (130.0 cm) max. overall height
- B. 25⁷/₁₆" (64.6 cm) max. recessed width
- C. 48¹/₁₆" (124.0 cm) recessed height
- D. 23¹/₄" (59.1 cm) max. recessed depth
- E. 27" (68.6 cm) overall width
- F. 12" (30.5 cm) from back of control panel to start of strain relief
- G. 66" (167.6 cm) flexible conduit length

30" (76.2 cm) models

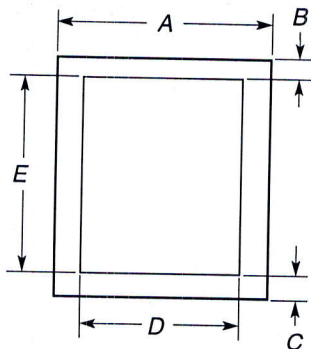
- A. 51¹/₁₆" (130.0 cm) max. overall height
- B. 28¹/₂" (72.4 cm) max. recessed width
- C. 48¹/₁₆" (124.0 cm) recessed height
- D. 23¹/₄" (59.1 cm) max. recessed depth
- E. 30" (76.2 cm) overall width
- F. 12" (30.5 cm) from back of control panel to start of strain relief
- G. 66" (167.6 cm) flexible conduit length

Because Whirlpool Corporation includes a continues commitment to improve our products, we reserve the right to change materials and specifications without notice.

Dimensions are for planning purposes only. For complete details, see Installation Instructions packed with product. Specifications subject to change without notice.

CABINET DIMENSIONS - SINGLE OVENS

Single Oven Undercounter (without cooktop installed above)

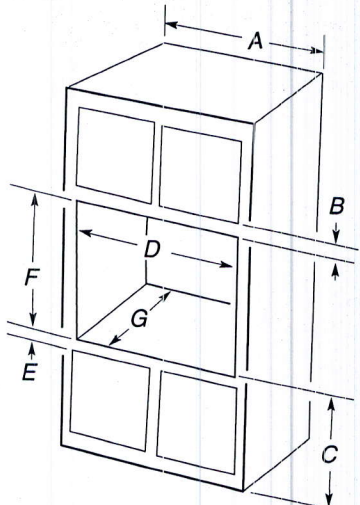


- 27" (68.6 cm) models**

 - A. 27" (68.6 cm) min. cabinet width
 - B. 1½" (3.8 cm) min. top of cutout to underside of countertop
 - C. 5¼" (13.3 cm) bottom of cutout to floor
 - D. 25½" (64.8 cm) cutout width
 - E. 28" (71.2 cm) min. cutout height
- 30" (76.2 cm) models**

 - A. 30" (76.2 cm) min. cabinet width
 - B. 1½" (3.8 cm) min. top of cutout to underside of countertop
 - C. 5¼" (13.3 cm) bottom of cutout to floor
 - D. 28½" (72.4 cm) cutout width
 - E. 28" (71.2 cm) min. cutout height

Single Ovens Installed in Cabinet



- 27" (68.6 cm) models**

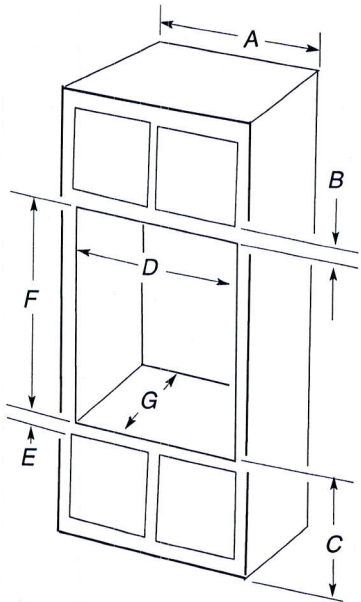
 - A. 27" (68.6 cm) min. cabinet width
 - B. 1" (2.5 cm) top of cutout to bottom of upper cabinet door
 - C. 32" (81.3 cm) bottom of cutout to floor
 - D. 25½" (64.8 cm) cutout width
 - E. 1½" (3.8 cm) min. bottom of cutout to top of cabinet door
 - F. 28" (71.2 cm)* recommended cutout height
 - G. 24" (60.7 cm) cutout depth
- 30" (76.2 cm) models**

 - A. 30" (76.2 cm) min. cabinet width
 - B. 1" (2.5 cm) top of cutout to bottom of upper cabinet door
 - C. 32" (81.3 cm) bottom of cutout to floor
 - D. 28½" (72.4 cm) cutout width
 - E. 1½" (3.8 cm) min. bottom of cutout to top of cabinet door
 - F. 28" (71.2 cm)* recommended cutout height
 - G. 24" (60.7 cm) cutout depth

***NOTE:** The cutout height can be between 26½" (68.4 cm) and 29⅞" (74.8 cm) for single ovens.

CABINET DIMENSIONS - SINGLE OVENS

Double Ovens Installed in Cabinet



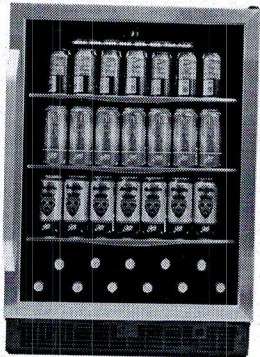
- 27" (68.6 cm) models**

 - A. 27" (68.6 cm) min. cabinet width
 - B. 1" (2.5 cm) top of cutout to bottom of upper cabinet door
 - C. 14¾" (37.5 cm) bottom of cutout to floor is recommended. 4"-14¾" (10.2-37.5 cm) bottom of cutout to floor is acceptable.
 - D. 25½" (64.8 cm) cutout width
 - E. 1½" (3.8 cm) min. bottom of cutout to top of cabinet door
 - F. 50¼" (127.6 cm)* recommended cutout height
 - G. 24" (60.7 cm) cutout depth
- 30" (76.2 cm) models**

 - A. 30" (76.2 cm) min. cabinet width
 - B. 1" (2.5 cm) top of cutout to bottom of upper cabinet door
 - C. 14¾" (37.5 cm) bottom of cutout to floor is recommended. 4"-14¾" (10.2-37.5 cm) bottom of cutout to floor is acceptable.
 - D. 28½" (72.4 cm) cutout width
 - E. 1½" (3.8 cm) min. bottom of cutout to top of cabinet door
 - F. 50¼" (127.6 cm)* recommended cutout height
 - G. 24" (60.7 cm) cutout depth

***NOTE:** The cutout height can be between 48⅞" (124.1 cm) and 52¾" (132.6 cm) for double ovens.

Silhouette



PRODUCT DESCRIPTION

Which type of beverage are you seeking a powerfully-cooled place for? Whatever your chilled choice of decadent drink may be, this beverage center is outfitted to accommodate. This cooler will undoubtedly make you the host with the most options of indulgence.

SPECIFICATIONS

Dimensions

Width	60cm	23.8"
Depth	60cm	23.75"
Height	881cm	347"

Capacity

Bottle Capacity 750ml	138
Can capacity 330ml	11

Temperature Range

Temperature	Low: 37 °F	High: 64 °F
-------------	------------	-------------

WARRANTY

The Silhouette SBC057D1BSS model comes with a 24-month warranty on parts and labour with convenient in-home service. The installation and yearly maintenance (cleaning) of the fridge are not covered under the warranty.

RICCOTTA

24" Single Zone Beverage Center - SBC057D1BSS

PRODUCT FEATURES

STAY COOL, STAY FROSTY

Big Game, Big BBQ or Big Holiday this model will keep all your Bevvies well chilled all year long. Ample storage of up to 138 cans and 11 bottles of wine will keep your guests happy and hydrated.

DISCREET AND ELEGANT

The minimalist control panel has a clean discreet look and is easy to use.

NEVER BE LEFT IN THE DARK

The true, blue LED track lighting that illuminates the interior of this unit exquisitely displays your wine without any damaging heat. It is 50% brighter than the previous model and now offers 3 lighting options.

Where some see room for an appliance;
We see room for an experience

www.silhouetteappliances.com

KitchenAid® 27" (68.6 cm) and 30" (76.2 cm) Electric Built-In Convection Microwave Oven

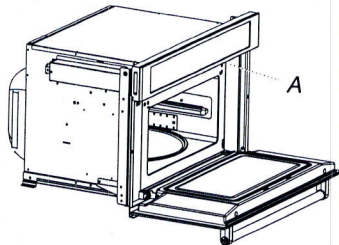
PRODUCT MODEL NUMBERS

KMBP100E

KMBP107E

ELECTRICAL CONNECTION

- Microwave oven must be connected to the proper electrical voltage and frequency as specified on the model/serial number rating plate. The model/serial/rating plate is located underneath the control panel, along the oven vent.

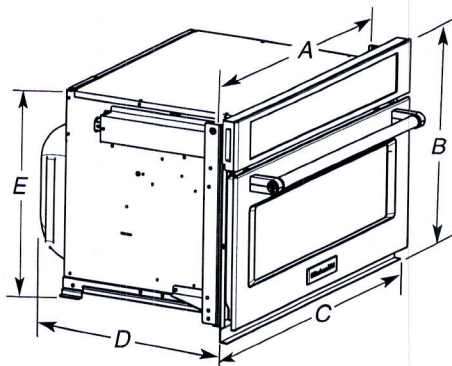


A. Model/serial/rating plate

- The microwave oven rated 120/240 volt, 20-amp, has 4 wires (L1, L2, N and G) in the flex conduit and should be connected to a 20-amp maximum rated circuit, overcurrent protected on both the L1 and L2 circuits.
- A time-delay fuse or circuit breaker is recommended.

PRODUCT DIMENSIONS

27" (68.6 cm) and 30" (76.2 cm) Microwave Ovens



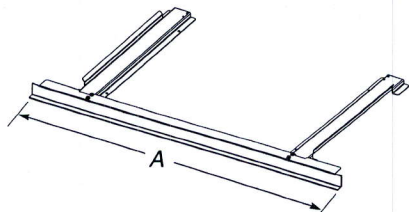
27" (68.6 cm) models

- A. 25 $\frac{3}{8}$ " (64.5 cm)
- B. 18 $\frac{5}{8}$ " (47.3 cm) overall height
- C. 26 $\frac{3}{4}$ " (67.9 cm) overall width
- D. 21 $\frac{1}{2}$ " (54.6 cm)
- E. 17 $\frac{5}{8}$ " (44.1 cm)

30" (76.2 cm) models

- A. 28 $\frac{3}{8}$ " (72.1 cm)
- B. 18 $\frac{5}{8}$ " (47.3 cm) overall height
- C. 29 $\frac{3}{4}$ " (75.6 cm) overall width
- D. 21 $\frac{1}{2}$ " (54.6 cm)
- E. 17 $\frac{5}{8}$ " (44.1 cm)

27" (68.6 cm) and 30" (76.2 cm) Microwave Oven Spacer Kit



27" (68.6 cm) models

- A. 26 $\frac{3}{4}$ " (67.9 cm) overall width

30" (76.2 cm) models

- A. 29 $\frac{3}{4}$ " (75.6 cm) overall width

NOTE: The microwave oven spacer kit will allow the microwave oven to be installed in a 17 $\frac{5}{8}$ "-17 $\frac{3}{4}$ " (44.1-45.1 cm) maximum cutout height.

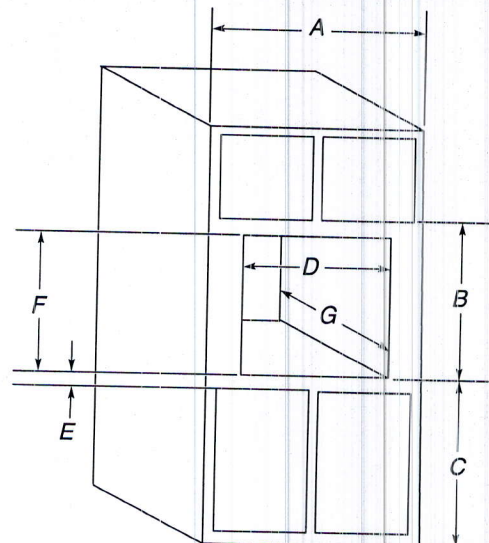
A microwave oven spacer kit is available from your dealer that will allow the microwave oven to be installed in a 19"-19 $\frac{13}{16}$ " (48.3-50.2 cm) maximum cutout height. Match the oven size to the following kits:

- 27" (68.6 cm) Stainless Steel - Model W10469901
- 30" (76.2 cm) Stainless Steel - Model W10469903

To order, see the "Assistance or Service" section of the Use and Care Guide.

CABINET DIMENSIONS

27" (68.6 cm) and 30" (76.2 cm) Microwave Ovens



27" (68.6 cm) models

- A. 27" (68.6 cm) min. cabinet width
- B. 18 $\frac{5}{8}$ " (47.3 cm) from bottom of cutout to bottom of upper cabinet door
- C. 40" (101.6 cm) bottom of cutout to floor (recommended)
- D. 25 $\frac{1}{2}$ " (64.8 cm) cutout width
- E. 1 $\frac{1}{2}$ " (3.8 cm) min. bottom of cutout to top of cabinet door
- F. 17 $\frac{5}{8}$ " (44.7 cm) recommended cutout height (will fit cutout height from 17 $\frac{5}{8}$ " [44.1 cm] to 17 $\frac{3}{4}$ " [45.1 cm])
- G. 21 $\frac{1}{8}$ " (55.5 cm) min. cutout depth

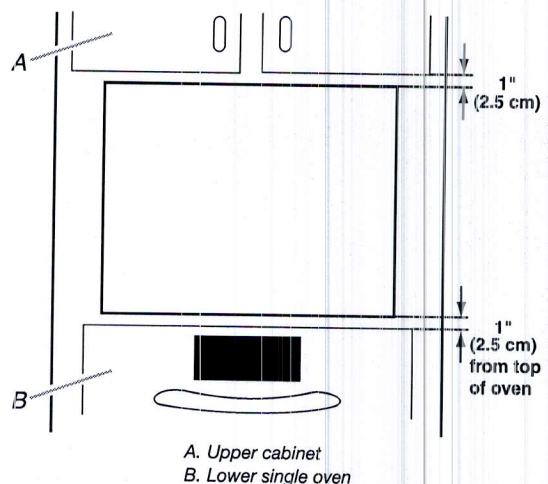
30" (76.2 cm) models

- A. 30" (76.2 cm) min. cabinet width
- B. 18 $\frac{5}{8}$ " (47.3 cm) from bottom of cutout to bottom of upper cabinet door
- C. 40" (101.6 cm) bottom of cutout to floor (recommended)
- D. 28 $\frac{1}{2}$ " (72.4 cm) cutout width
- E. 1 $\frac{1}{2}$ " (3.8 cm) min. bottom of cutout to top of cabinet door
- F. 17 $\frac{5}{8}$ " (44.7 cm) recommended cutout height (will fit cutout height from 17 $\frac{5}{8}$ " [44.1 cm] to 17 $\frac{3}{4}$ " [45.1 cm])
- G. 21 $\frac{1}{8}$ " (55.5 cm) min. cutout depth

MINIMUM INSTALLATION CLEARANCES

For proper installation, the following minimum clearances must exist above and below the cabinet opening.

Installation Above Single Built-In Oven



Approved models: KMBP100E and KMBP107E.

Because Whirlpool Corporation includes a continuous commitment to improve our products, we reserve the right to change materials and specifications without notice.

Dimensions are for planning purposes only. For complete details, see Installation Instructions packed with product. Specifications subject to change without notice.

Ref. W10725730E
2/10/15