

REFER TO THE **NORDIC INSTALLATION GUIDE**
FOR PROPER STORAGE AND INSTALLATION.
SQUASH BLOCKS OF 2x4, 2x6, 2x8 SPF #2 REQ'D
UNDER INTERIOR UNIFORM LOAD BEARING WALLS.
MULTIPLE SQUASH BLOCKS REQ'D UNDER
CONCENTRATED LOADS. SEE FIGURE 1.
CANTILEVERED JOISTS INCLUDING **CANT' OVER**
BRICK REQ. I-JOIST BLOCKING ALONG BEARING
AND RIMBOARD CLOSURE AT ENDS. SEE FIGURES
4/5 FOR REINFORCEMENT REQUIREMENTS.
FOR **HOLES** INCLUDING **DUCT CHASE** AND **FIELD**
CUT OPENINGS SEE FIGURE 6 AND TABLES 6.1/6.2.
CERAMIC TILE APPLICATION AS PER OBC 9.30.6.

LOADING:
LIVE LOAD: 40.0 lb/ft²
DEAD LOAD: 15.0 lb/ft²
TILE LOAD: +5.0 lb/ft²

SUBFLOOR: 3/4" GLUED AND NAILED

Connector Summary		
Qty	Manuf	Product
5	H1	IUS2.56/9.5
6	H1	IUS2.56/9.5
6	H1	IUS2.56/9.5
2	H3	HU310-2

8/03/22
C. M. HEYENS
100505065
PROVINCE OF ONTARIO

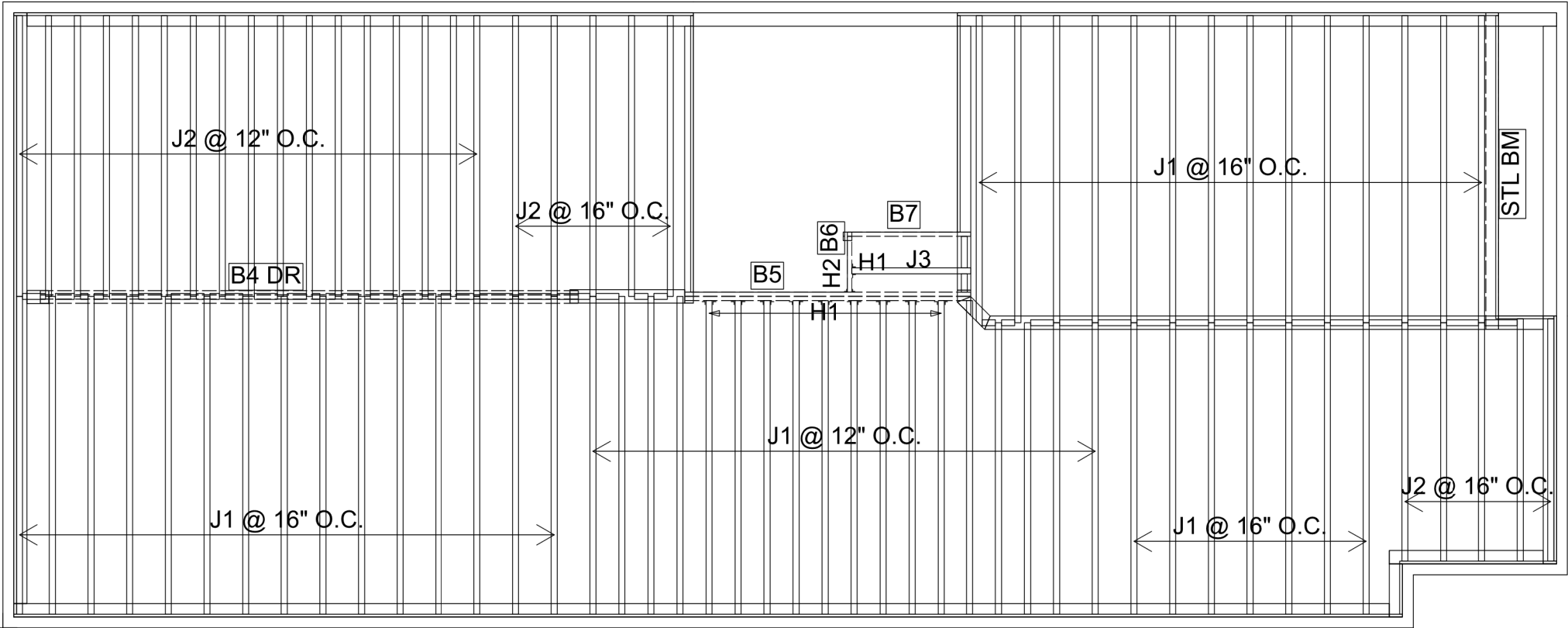
STRUCTURAL COMPONENTS ONLY
DWG# TF22080207

The wood beams and joists outlined on this plan are designed as individual building components to be incorporated into the design of the building at the specification of the building designer. Please see the individual beam reports, joist reports, and/or joist span tables for each component identified on this placement plan.

The supporting structure is to be specified by the building designer prior to the installation of joist(s) and/or beam(s). The building designer is responsible for the bracing of the floor system and its integration into the bracing of the overall structure. All components labelled "by others" or "as per plan", and all steel beams, are not within the scope of work of this seal.

The building designer must review and approve this plan to ascertain conformity to the overall structural plan of the building. All dimensions to be verified on site.

1st FLOOR FRAMING



Products				
PlotID	Length	Product	Plies	Net Qty
J1	12-00-00	9 1/2" NI-40x	1	54
J2	10-00-00	9 1/2" NI-40x	1	27
J3	6-00-00	9 1/2" NI-40x	1	1
B5	10-00-00	1 3/4" x 9 1/2" (2.0E 3100) WestFraser LVL	2	2
B7	6-00-00	1 3/4" x 9 1/2" (2.0E 3100) WestFraser LVL	1	1
B6	2-00-00	1 3/4" x 9 1/2" (2.0E 3100) WestFraser LVL	1	1
B4 DR	20-00-00	1 3/4" x 14" (2.0E 3100) WestFraser LVL	3	3

Connector Summary		
Qty	Manuf	Product
1	H1	IUS2.56/9.5
9	H1	IUS2.56/9.5
1	H2	HUS1.81/10

DWG# TF22080200 TO TF22080203



STRUCTURAL COMPONENTS ONLY
DWG# TF22080208

**THIS IS A FLOOR COMPONENT
PLACEMENT PLAN ONLY.**

The wood beams and joists outlined on this plan are designed as individual building components to be incorporated into the design of the building at the specification of the building designer. Please see the individual beam reports, joist reports, and/or joist span tables for each component identified on this placement plan.
The supporting structure is to be specified by the building designer prior to the installation of joist(s) and/or beam(s). The building designer is responsible for the bracing of the floor system and its integration into the bracing of the overall structure. All components labelled "by others" or "as per plan", and all steel beams, are not within the scope of work of this seal.
The building designer must review and approve this plan to ascertain conformity to the overall structural plan of the building. All dimensions to be verified on site.

DATE: 2022-07-18

2nd FLOOR FRAMING



FROM PLAN DATED: 2022/05
BUILDER: GREENPARK HOMES
SITE: BARLASSINA CONSTRUCTION
MODEL: GARDEN 11
ELEVATION: 1
LOT: 65
CITY: CAMBRIDGE
SALESMAN: RICK DICIANO
DESIGNER: AJ
REVISION:

REFER TO THE **NORDIC INSTALLATION** GUIDE FOR PROPER STORAGE AND INSTALLATION.
SQUASH BLOCKS OF 2x4, 2x6, 2x8 SPF #2 REQ'D UNDER INTERIOR UNIFORM LOAD BEARING WALLS. **MULTIPLE SQUASH BLOCKS** REQ'D UNDER CONCENTRATED LOADS. SEE FIGURE 1.
CANTILEVERED JOISTS INCLUDING **CANT' OVER BRICK** REQ. I-JOIST BLOCKING ALONG BEARING AND RIMBOARD CLOSURE AT ENDS. SEE FIGURES 4/5 FOR REINFORCEMENT REQUIREMENTS.
FOR **HOLES** INCLUDING **DUCT CHASE** AND **FIELD CUT OPENINGS** SEE FIGURE 6 AND TABLES 6.1/6.2. **CERAMIC TILE** APPLICATION AS PER OBC 9.30.6.

ALL **CONNECTORS** MUST BE INSTALLED AS PER THE **MANUFACTURER'S SPECIFICATIONS** USING THE MANUFACTURER **SPECIFIED FASTENERS**.
ALL **BEAM HANGER FASTENERS** INSTALLED INTO THE **SUPPORTING MEMBER MUST** BE A MINIMUM OF **3.5"** IN LENGTH UNLESS OTHERWISE SPECIFIED BY THE SUPPORTING MEMBER ENGINEER OF RECORD.

LOADING:
LIVE LOAD: 40.0 lb/ft²
DEAD LOAD: 15.0 lb/ft²
TILE LOAD: +5.0 lb/ft²

JOIST LL DEFLECTION LIMIT: L/480

SUBFLOOR: 5/8" GLUED AND NAILED

NORDIC

INSTALLATION GUIDE NORDIC JOIST

NS-G133 
ENGLISH
VERSION
2020-10-01

Engineered Wood Products

BASIC INSTALLATION GUIDE FOR RESIDENTIAL FLOORS



NORDIC
STRUCTURES

nordic.ca

INSTALLING NORDIC I-JOISTS

1. Installation of Nordic I-joists shall be as shown in details 1.
2. Except for cutting to length, I-joist flanges should never be cut, drilled or notched.
3. Install I-joists so that top and bottom flanges are within 1/2 inch of true vertical alignment.
4. Concentrated loads should only be applied to the top surface of the top flange. Concentrated loads should not be suspended from the bottom flange with the exception of light loads, such as ceiling fans or light fixtures.
5. I-joists must be protected from the weather prior to installation.
6. I-joists must not be used in applications where they will be permanently exposed to weather, or will reach a moisture content of 15 percent or greater, such as in swimming pool or hot tub areas. They must not be installed where they will remain in direct contact with concrete or masonry.
7. End bearing length must be at least 1-3/4 inch. For multiple-span joists, intermediate bearing length must be at least 3-1/2 inches.
8. Ends of floor joists shall be restrained to prevent rollover. Use rim board or I-joist blocking panels.
9. I-joists installed beneath bearing walls perpendicular to the joists shall have full-depth blocking panels, rim board, or squash blocks (cripple blocks) to transfer gravity loads from above the floor system to the wall or foundation below.
10. For I-joists installed directly beneath bearing walls parallel to the joists or used as rim board or blocking panels, the maximum vertical load using a single I-joist is 3,300 plf, and 6,000 plf if double I-joists are used.
11. Continuous lateral support of the I-joist's compression flange is required to prevent rotation and buckling. In simple span uses, lateral support of the top flange is normally supplied by the floor sheathing. In multiple-span or cantilever applications, bracing of the I-joist's bottom flange is also required at interior supports of multiple-span joists, and at the end support next to the cantilever extension. The ends of all cantilever extensions must be laterally braced as shown in details 3, 4, or 5.
12. Nails installed in flange face or edge shall be spaced in accordance with the applicable building code requirements or approved building plans, but should not be closer than those specified on page 3.3 of the Nordic Joist Technical Guide (NS-GT3).
13. Details 1 show only I-joist-specific fastener requirements. For other fastener requirements, see the applicable building code.
14. For proper temporary bracing of wood I-joists and placement of temporary construction loads, see [APA Technical Note: Temporary Construction Loads over I-Joist Roofs and Floors, Form J735](#).

All nails shown in the details are assumed to be common nails unless otherwise noted. Nails shall have a diameter not less than 0.128 inch for 2-1/2-inch nails, or 0.144 inch for 3-inch nails. Individual components not shown to scale for clarity.

SAFETY AND CONSTRUCTION PRECAUTIONS

I-joists are not stable until completely installed, and will not carry any load until fully braced and sheathed.

Avoid Accidents by Following these Important Guidelines:

1. Brace and nail each I-joist as it is installed, using hangers, blocking panels, rim board, and/or cross-bridging at joist ends. When I-joists are applied continuous over interior supports and a load-bearing wall is planned at that location, blocking will be required at the interior support.
 2. When the building is completed, the floor sheathing will provide lateral support for the top flanges of the I-joists. Until this sheathing is applied, temporary bracing, often called struts, or temporary sheathing must be applied to prevent I-joist rollover or buckling.
 - Temporary bracing or struts must be 1x4 inch minimum, at least 8 feet long and spaced no more than 8 feet on centre, and must be secured with a minimum of two 2-1/2-inch nails fastened to the top surface of each I-joist. Nail the bracing to a lateral restraint at the end of each bay. Lap ends of adjoining bracing over at least two I-joists.
 - Or, sheathing (temporary or permanent) can be nailed to the top flange of the first 4 feet of I-joists at the end of the bay.
 3. For cantilevered I-joists, brace top and bottom flanges, and brace ends with closure panels, rim board, or cross-bridging.
 4. Install and fully nail permanent sheathing to each I-joist before placing loads on the floor system. Then, stack building materials over beams or walls only.
 5. Never install a damaged I-joist.
- Improper storage or installation, failure to follow applicable building codes, failure to follow span ratings for Nordic I-joists, failure to follow allowable hole sizes and locations, or failure to use web stiffeners when required can result in serious accidents. Follow these installation guidelines carefully.



Do not walk on I-joists until fully fastened and braced, or serious injuries can result.



Never stack building materials over unsheathed I-joists. Once sheathed, do not overstress I-joist with concentrated loads from building materials.

NORDIC I-JOIST SERIES

RESIDENTIAL SERIES

NI-20 2x3 S-P-F No. 2 3/8 in. web
Depths 9-1/2 and 11-7/8 in.
33 pieces per unit

NI-40x 2x3 1950F MSR 3/8 in. web
Depths 9-1/2, 11-7/8 and 14 in.
33 pieces per unit

NI-60 2x3 2100F MSR 3/8 in. web
Depths 9-1/2, 11-7/8, 14 and 16 in.
33 pieces per unit

NI-80 2x4 2100F MSR 3/8 in. web
Depths 9-1/2, 11-7/8, 14 and 16 in.
23 pieces per unit

NI-90 2x4 2400F MSR 3/8 in. web
Depths 11-7/8, 14 and 16 in.
23 pieces per unit

RIM BOARDS
Width 1-1/8 in.
Length 16 ft
Depths 9-1/2 to 16 in.
APA Rim Board Plus

WEB STIFFENERS

2

Concentrated Load (Load Stiffener)

Tight joint, no gap

Gap

End Bearing (Bearing Stiffener)

Gap

Tight joint, no gap

Flange width 2-1/2" or 3-1/2"

Approx. 2"

1/8"-1/4" Gap

Four 2-1/2" nails, 3" nails required for I-joists with 3-1/2" flange width

No gap

Stiffener Size Requirements

Flange width (in.)	Web stiffener size each side of web (in.)
2-1/2	1 x 2-5/16 Minimum width
3-1/2	1-1/2 x 2-5/16 Minimum width

NAIL SPACING

Nailing into flange face

Nailing into flange edge

Nailed to Only One Flange Edge (Top View)

Closest nail spacing

Nailed to Both Flange Edges (Top View)

Closest nail spacing

1/2 offset spacing ^(a)

Recommended Closest Nail Spacing for Fastening Sheathing to I-joist Flanges to Minimize Splitting

Fastener size (diameter x length)	Flange face nailing ^(a)			Flange edge nailing ^(a)		
	End distance (in.)	Nail spacing (in.)	End distance (in.)	Nail spacing (in.)	Nail spacing (in.)	
0.128" or smaller in diameter, and 3-1/4" or shorter in length	2	2	2	2	4	
					4	
Greater than 0.128" up to 0.148" in diameter, and 3-1/4" or shorter in length	2	3	2	3	6	
					6	

^(a) If more than one row is required, offset rows a minimum of 1/2 inch and stagger.

^(b) Closest nail spacing measured from one flange edge. Nails on opposite flange edge must be offset one-half the minimum spacing.

1a

Nordic I-joist blocking panel

2-1/2" nails at 6" o.c. to top plate (when used for lateral shear transfer; nail to bearing plate with same nailing as required for floor sheathing)

Attach I-joist to top plate per detail 1b

1b

Rim board

One 2-1/2" nail at top and bottom flange

Attach rim board to top plate using 2-1/2" toe-nails at 6" o.c.

One 2-1/2" face nail at each side at bearing

Note:
1. To avoid splitting flange, start nails at least 1-1/2 inch from end of I-joist. Nails may be driven at an angle to avoid splitting of bearing plate.

1g

Load-bearing wall above shall align vertically with the wall below. Other conditions, such as offset bearing walls, are not covered by this detail.

Blocking panel required over all interior supports under load-bearing walls or when floor joists are not continuous over support. The NBC requires blocking at load-bearing and non-load-bearing walls constructed with required braced wall panels (shearwalls).

Joist attachment per detail 1b

2-1/2" nails at 6" o.c. to top plate

Nordic I-joist blocking panel per detail 1a

1h

Use backer block if hanger load exceeds 360 lbf. Before installing a backer block to a double I-joist, drive three additional 3" nails through the webs and filler block where the backer block will fit. Clinch. Install backer block tight to top flange. Use twelve 3" nails, clinched when possible. Maximum resistance for hanger for this detail = 1,620 lbf.

Double I-joist header

Filler block per detail 1p

Top- or face-mount hanger

Backer block required:
- Only on the loaded side for top-mount hangers
- On both sides for face-mount hangers

Flange width (in.)	Material thickness required (in.) ^(a)	Minimum depth (in.) ^(b)
2-1/2	1	5-1/2
3-1/2	1-1/2	7-1/4

^(a) Minimum grade for backer block material shall be S-P-F No. 2 or better for solid sawn lumber and wood structural panels conforming to CAN/CSA-Q325 Standard.

^(b) For face-mount hangers use net joist depth minus 3-1/4 inches for joists with 1-1/2-inch-thick flanges.

Notes:
1. Unless hanger sides laterally support the top flange, bearing stiffeners shall be used.
2. For hanger resistance, see manufacturer's recommendations.
3. Verify double I-joist resistance to support concentrated loads.
4. Backer blocks must be long enough to permit required nailing without splitting.

1j

Top- or face-mount hanger installed per manufacturer's recommendations

1k

2x plate flush with inside face of wall or beam. 1/8" overhang allowed past inside face of wall or beam.

Top-mount hanger installed per manufacturer's recommendations

1m

Install hanger per manufacturer's recommendations

Multiple I-joist header with full depth filler block shown. Nordic Lam or SCL headers may also be used. Verify header resistance to support concentrated loads.

Backer block per detail 1h

Filler block per detail 1p

Note:
1. See detail 1h for maximum support resistance.

1n

Do not bevel-cut I-joist beyond inside face of wall

Attach I-joist per detail 1b

Note:
1. Blocking required at bearing for lateral support, not shown for clarity.

1p

Filler block

Offset nails from opposite face by 6"

1/8" to 1/4" gap between top flange and filler block

1q

2x plate flush with inside face of wall or beam. 1/8" overhang allowed past inside face of wall or beam.

Top-mount hanger installed per manufacturer's recommendations

1r

Blocking panel

Two 2-1/2" nails from joist web to lumber piece

Two 2-1/2" nails from blocking panel web to lumber piece

Notes:
1. This detail may be used to reduce floor vibration.
2. Blocking panels may be of any I-joist series. Nails attaching lumber piece to I-joist web should be driven from the web side and clinched on the lumber side.
3. One occasional blocking panel may be left out for the passage of plumbing or ventilation ducts. Otherwise, a hole of not more than 2/3 of the lesser dimension of the blocking depth or length may be drilled in the blocking panel.

1s

See note 2

1/8" gap minimum

One 2-1/2" nail at top and bottom flange

Rim board

2-1/2" nails at 6" o.c.

One 2-1/2" nail, one side only

Two 2-1/2" nails from each web-to-lumber piece

2x4 minimum

Blocking panel (note 1)

Notes:
1. In some local codes, blocking panels are prescriptively required in the first joist space (or first and second joist spaces) next to the starter joist. Where required, see local code requirements for spacing of the blocking panels. As a minimum, it is recommended to use blocking panels spaced at 4 feet on centre.
2. Details shown are for minimum blocking attachment. Transfer of lateral loads may require additional fasteners. In such cases, nail size, spacing and specific design detailing shall be provided by the building designer.
3. Where blocking panels are required between adjacent joists, the blocking panels can be staggered by approximately 3 inches, and end-nails as shown.
4. Nails attaching lumber piece to I-joist web should be driven from the web side and clinched on the lumber side.

1t

Filler block requirements for double I-joist construction

Flange width (in.)	Net depth (in.)	Filler block size (in.)	Example
2-1/2	9-1/2	2-1/8 to 2-1/4 x 6	2x8 x 5/8" or 3/4" sheathing
	11-7/8	2-1/8 to 2-1/4 x 8	2x8 x 5/8" or 3/4" sheathing
	14	2-1/8 to 2-1/4 x 10	2x10 x 5/8" or 3/4" sheathing
3-1/2	9-1/2	3 x 6	2 x 2x6
	11-7/8	3 x 8	2 x 2x6
	14	3 x 10	2 x 2x10

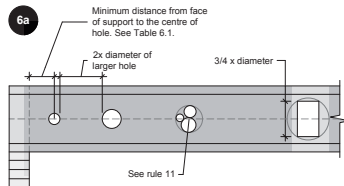
Note:
1. The height of the filler block may be different from that specified in the table, as long as it allows nailing and respects the required gap.

WEB HOLES AND OPENINGS

WEB HOLES IN I-JOISTS

Rules for Cutting Holes in I-joists

1. The distance between the inside edge of the support and the centreline of any hole shall be in compliance with the requirements of Table 6.1.
2. I-joist top and bottom flanges must never be cut, notched or otherwise modified.
3. Whenever possible, field-cut holes should be centred on the middle of the web.
4. The maximum size hole that can be cut into an I-joist web shall equal the clear distance between the flanges of the I-joist minus 1/4 inch. A minimum of 1/8 inch should always be maintained between the top or bottom of the opening and the adjacent I-joist flange.
5. The sides of square holes or longest sides of rectangular holes should not exceed 3/4 of the diameter of the maximum round hole permitted at that location.
6. Where more than one hole is necessary, the distance between adjacent hole edges shall exceed twice the diameter of the largest round hole or twice the size of the largest square hole - or twice the length of the longest side of the longest rectangular hole - and each hole must be sized and located in compliance with the requirements of Table 6.1.
7. Holes measuring 1-1/2 inch or smaller shall be permitted anywhere in a cantilevered section of a joist. Holes of greater size may be permitted subject to verification.
8. A 1-1/2 inch hole or smaller can be placed anywhere in the web provided that it meets the requirements of rule number 6 above.
9. All holes shall be cut in accordance with the restrictions listed above and as illustrated in detail 6a.
10. Limit three maximum-size holes per span.
11. A group of round holes at approximately the same location shall be permitted if it meets the requirements for a single round hole circumscribed around them.

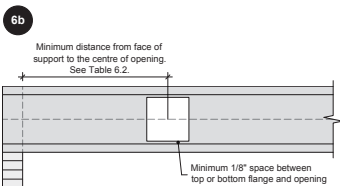


- Notes:**
1. Never drill, cut or notch the flange, or over-cut the web.
 2. Holes in web should be cut with a sharp saw.
 3. For rectangular holes, avoid over-cutting the corners, as this can cause unnecessary stress concentrations. Slightly rounding the corners is recommended. Starting the rectangular hole by drilling a 1-inch-diameter hole in each of the four corners and then making the cuts between the holes is another good method to minimize damage to the I-joist.

DUCT CHASE OPENINGS

Rules for Cutting Duct Chase Openings in I-joists

1. The distance between the inside edge of the support and the centreline of a duct chase opening shall be in compliance with the requirements of Table 6.2.
2. I-joist top and bottom flanges must never be cut, notched or otherwise modified.
3. The maximum depth of a duct chase opening that can be cut into an I-joist web shall equal the clear distance between the flanges of the I-joist minus 1/4 inch. A minimum of 1/8 inch should always be maintained between the top or bottom of the opening and the adjacent I-joist flange.
4. All openings shall be cut in accordance with the restrictions listed above and as illustrated in detail 6b.
5. Limit one maximum-size duct chase opening per span.

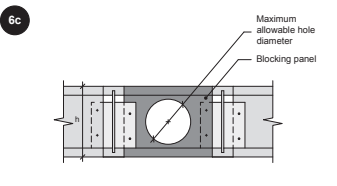


- Notes:**
1. Never drill, cut or notch the flange, or over-cut the web.
 2. Holes in web should be cut with a sharp saw.
 3. Avoid over-cutting the corners, as this can cause unnecessary stress concentrations. Slightly rounding the corners is recommended. Starting the rectangular hole by drilling a 1-inch-diameter hole in each of the four corners and then making the cuts between the holes is another good method to minimize damage to the I-joist.

HOLES IN BLOCKING PANELS

Maximum Allowable Hole Size in Lateral-restraint-only Blocking Panels

1. The maximum allowable hole size for a lateral-restraint-only blocking panel is 2/3 of the lesser dimension of the blocking's depth or length. Assuming the blocking panel is longer than its height (or depth), the table aside applies. For other applications, contact Nordic Structures.
2. Holes cut into the blocking panels are subject to the following limitations:
 - The top and bottom flanges of an I-joist blocking panel must never be cut, notched or otherwise modified.
 - Field-cut holes must be centred in the blocking horizontally.
 - While round holes are preferred, rectangle holes may be used provided the corners are not over cut. Slightly rounding corners or pre-drilling corners with a 1-inch-diameter bit is recommended.
- All holes must be cut in a workman-like manner in accordance with the limitations listed above.



I-joist or rim board blocking depth (in.)	Maximum allowable hole diameter or (in.) ^(a)
9-1/2	6-1/4
11-7/8	7-3/4
14	9-3/4
16	10-1/2

^(a) Maximum allowable hole diameter in blocking panel, where the blocking panel is longer than its height.

TABLE 6.1 - LOCATION OF WEB HOLES

Simple or multiple span		Minimum distance from inside face of any support to centre of hole (ft.-in.)															
Joist depth	Joist series	2	3	4	5	6	6-1/4	7	8	8-5/8	9	10	10-3/4	11	12	12-3/4	
9-1/2"	NI-20	0'-7"	1'-6"	2'-10"	4'-3"	5'-8"	6'-0"	-	-	-	-	-	-	-	-	-	-
	NI-40x	0'-7"	1'-6"	3'-0"	4'-4"	6'-0"	6'-4"	-	-	-	-	-	-	-	-	-	-
	NI-60	1'-3"	2'-6"	4'-0"	5'-4"	7'-0"	7'-5"	-	-	-	-	-	-	-	-	-	-
	NI-80	2'-3"	3'-6"	5'-0"	6'-6"	8'-2"	8'-8"	-	-	-	-	-	-	-	-	-	-
11-7/8"	NI-20	0'-7"	0'-8"	1'-0"	2'-4"	3'-8"	4'-0"	5'-0"	6'-8"	7'-9"	-	-	-	-	-	-	-
	NI-40x	0'-7"	0'-8"	1'-3"	2'-8"	4'-0"	4'-4"	5'-5"	7'-2"	8'-4"	-	-	-	-	-	-	-
	NI-60	0'-7"	1'-8"	3'-0"	4'-3"	5'-9"	6'-0"	7'-3"	6'-10"	10'-0"	-	-	-	-	-	-	-
	NI-80	1'-6"	2'-10"	4'-2"	5'-6"	7'-0"	7'-5"	8'-6"	10'-3"	11'-4"	-	-	-	-	-	-	-
14"	NI-20	0'-7"	0'-8"	1'-5"	3'-2"	4'-10"	5'-4"	6'-9"	8'-9"	10'-2"	-	-	-	-	-	-	-
	NI-40x	0'-7"	0'-8"	1'-0"	2'-4"	2'-9"	3'-9"	5'-2"	6'-0"	6'-6"	8'-3"	10'-2"	-	-	-	-	-
	NI-60	0'-7"	0'-8"	1'-8"	3'-0"	4'-3"	4'-8"	5'-8"	7'-2"	8'-0"	8'-8"	10'-4"	11'-9"	-	-	-	-
	NI-80	0'-10"	2'-0"	3'-4"	4'-9"	6'-2"	6'-5"	7'-6"	9'-0"	10'-0"	10'-8"	12'-4"	13'-9"	-	-	-	-
16"	NI-20	0'-7"	0'-8"	0'-10"	2'-5"	4'-0"	4'-5"	5'-9"	7'-5"	8'-8"	9'-4"	11'-4"	12'-11"	-	-	-	-
	NI-40x	0'-7"	0'-8"	0'-8"	1'-6"	2'-10"	3'-2"	4'-2"	5'-8"	6'-4"	7'-0"	8'-5"	9'-8"	10'-2"	12'-2"	13'-9"	-
	NI-60	0'-7"	1'-3"	2'-6"	3'-10"	5'-3"	5'-6"	6'-6"	8'-0"	9'-0"	9'-5"	11'-0"	12'-3"	12'-9"	14'-5"	16'-0"	-
	NI-80	0'-7"	0'-8"	0'-8"	1'-9"	3'-3"	3'-8"	4'-9"	6'-5"	7'-5"	8'-0"	9'-10"	11'-3"	11'-9"	13'-6"	15'-4"	-

- Notes:**
1. Tabulated values are applicable to residential floor construction meeting the above design criteria.
 2. The above table is based on the I-joists being used at their maximum spans. The minimum distance as given above may be reduced for shorter spans; contact your local distributor.

Design Criteria	
Joist spacing	Up to 24 inches
Loads	Live load = 40 psf and dead load = 15 psf
Deflection limits	L/480 under live load and L/240 under total load

TABLE 6.2 - LOCATION OF DUCT CHASE OPENINGS

Simple span		Minimum distance from inside face of any support to centre of opening (ft.-in.)															
Joist depth	Joist series	Duct chase length (in.)															
		8	10	12	14	16	18	20	22	24							
9-1/2"	NI-20	4'-1"	4'-5"	4'-10"	-	-	-	-	-	-	-	-	-	-	-	-	-
	NI-40x	5'-3"	5'-8"	6'-0"	6'-5"	6'-10"	7'-3"	7'-8"	-	-	-	-	-	-	-	-	-
	NI-60	5'-4"	5'-9"	6'-2"	6'-7"	7'-1"	7'-5"	8'-0"	-	-	-	-	-	-	-	-	-
	NI-80	5'-3"	5'-8"	6'-0"	6'-5"	6'-10"	7'-3"	7'-8"	8'-2"	8'-6"	-	-	-	-	-	-	-
11-7/8"	NI-20	5'-9"	6'-2"	6'-6"	-	-	-	-	-	-	-	-	-	-	-	-	-
	NI-40x	6'-8"	7'-2"	7'-6"	8'-1"	8'-6"	9'-1"	9'-6"	-	-	-	-	-	-	-	-	-
	NI-60	7'-3"	7'-8"	8'-0"	8'-6"	9'-0"	9'-3"	9'-9"	-	-	-	-	-	-	-	-	-
	NI-80	7'-2"	7'-7"	8'-0"	8'-5"	8'-10"	9'-3"	9'-8"	10'-2"	10'-8"	-	-	-	-	-	-	-
14"	NI-90	7'-6"	7'-11"	8'-4"	8'-9"	9'-2"	9'-7"	10'-1"	10'-7"	10'-11"	-	-	-	-	-	-	-
	NI-40x	8'-1"	8'-7"	9'-0"	9'-6"	10'-1"	10'-7"	11'-2"	-	-	-	-	-	-	-	-	-
	NI-60	8'-9"	9'-3"	9'-8"	10'-11"	10'-6"	11'-1"	11'-6"	-	-	-	-	-	-	-	-	-
	NI-80	9'-0"	9'-3"	9'-9"	10'-1"	10'-7"	11'-1"	11'-6"	12'-1"	12'-6"	-	-	-	-	-	-	-
16"	NI-90	9'-2"	9'-8"	10'-0"	10'-6"	11'-1"	11'-5"	11'-9"	12'-4"	12'-11"	-	-	-	-	-	-	-
	NI-60	10'-3"	10'-8"	11'-2"	11'-6"	12'-1"	12'-6"	13'-2"	-	-	-	-	-	-	-	-	-
	NI-80	10'-4"	10'-9"	11'-3"	11'-9"	12'-1"	12'-7"	13'-1"	13'-8"	14'-4"	-	-	-	-	-	-	-
	NI-90	10'-9"	11'-2"	11'-8"	12'-0"	12'-6"	13'-0"	13'-6"	14'-2"	14'-10"	-	-	-	-	-	-	-



BUILDER: **GREENPARK HOMES**
SITE: **BARLASSINA CONSTRUCTION**
MODEL: **GARDEN 11**
CITY: **CAMBRIDGE**

Job Name: **GARDEN 11 EL 1**
Level: **2ND FLR FRAMING**
Label: **B4 DR - i578**
Type: **Beam**

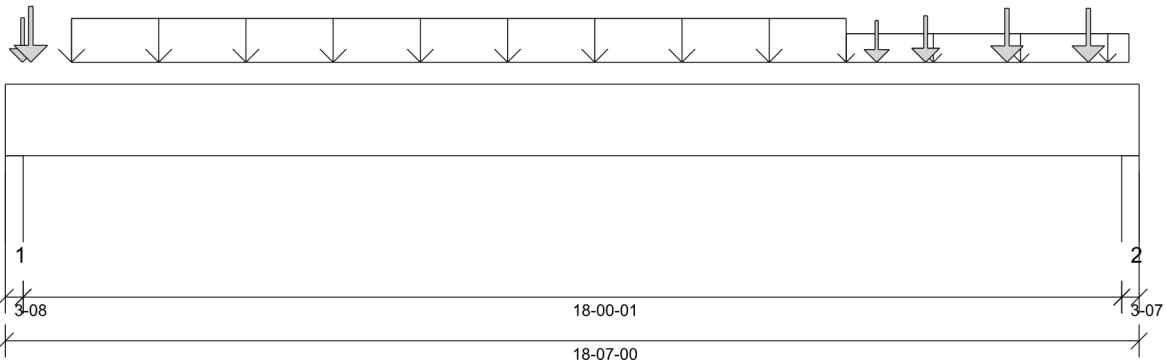
3 Ply Member
1 3/4" x 14" (2.0E 3100)
WestFraser LVL

Status:
**Design
Passed**

Illustration Not to Scale. Pitch: 0/12

Designed by Single Member Design Engine in MiTek® Structure Version
8.5.3.233.Update5.15

Report Version: 2021.03.26 06-24-2022 07:42



DESIGN INFORMATION

Building Code: NBCC 2015, Part9, BCBC 2018,
ABC 2019, OBC 2012 (2019
Amendment)
Design Methodology: LSD
Service Condition: Dry
LL Deflection Limit: L/360,
TL Deflection Limit: L/240,

Lateral Restraint Requirements:

Both ends of the member and the outer supports
must be laterally restrained. Top and bottom edges
of the member must be fully restrained or have the
following maximum unbraced length:
Top: 1'- 2 5/8" Bottom: 18'- 7"

Factored Resistance of Support Material:

- 812 psi Wall @ 0'- 2 1/2"
- 812 psi Wall @ 18'- 4 9/16"

ANALYSIS RESULTS

Design Criteria	Location	Load Combination	LDF	Design	Limit	Result
Factored Pos. Moment:	9'- 3 3/8"	1.25D + 1.5L	1.00	36779 lb ft	72216 lb ft	Passed - 51%
Factored Shear:	17'- 1 9/16"	1.25D + 1.5L	1.00	7470 lb	24431 lb	Passed - 31%
Live Load (LL) Pos. Defl.:	9'- 3 9/16"	L		0.429"	L/360	Passed - L/504
Total Load (TL) Pos. Defl.:	9'- 3 9/16"	D + L		0.665"	L/240	Passed - L/325
Permanent Deflection:	9'- 3 9/16"			-	L/360	Passed - L/943

SUPPORT AND REACTION INFORMATION

ID	Input Bearing Length	Controlling Load Combination	LDF	Factored Downward Reaction	Factored Uplift Reaction	Factored Resistance of Member	Factored Resistance of Support	Result
1	3-08	1.25D + 1.5L	1.00	8438 lb		19110 lb	14920 lb	Passed - 57%
2	3-07	1.25D + 1.5L	1.00	8119 lb		18655 lb	14565 lb	Passed - 56%

SPECIFIED LOADS

Type	Start Loc	End Loc	Source	Face	Dead (D)	Live (L)	Snow (S)	Wind (W)
Self Weight	0'	18'- 7"	Self Weight	Top	21 lb/ft	-	-	-
Uniform	1'- 1"	13'- 9 3/8"	Smoothed Load	Top	211 lb/ft	422 lb/ft	-	-
Uniform	13'- 9 3/8"	18'- 5"	Smoothed Load	Top	93 lb/ft	187 lb/ft	-	-
Point	0'- 3 3/8"	0'- 3 3/8"	J2(i679)	Top	95 lb	190 lb	-	-
Point	0'- 5"	0'- 5"	J1(i656)	Top	134 lb	267 lb	-	-
Point	14'- 3 3/8"	14'- 3 3/8"	J2(i999)	Top	86 lb	171 lb	-	-
Point	15'- 1"	15'- 1"	J2(i641)	Top	102 lb	203 lb	-	-
Point	16'- 5"	16'- 5"	J2(i621)	Top	127 lb	254 lb	-	-
Point	17'- 9"	17'- 9"	J2(i662)	Top	127 lb	254 lb	-	-

UNFACTORED REACTIONS

ID	Start Loc	End Loc	Source	Dead (D)	Live (L)	Snow (S)	Wind (W)
1	0'	0'- 3 1/2"	13(i393)	2117 lb	3850 lb	-	-
2	18'- 3 9/16"	18'- 7"	12(i391)	2049 lb	3716 lb	-	-

DESIGN NOTES

- The dead loads used in the design of this member were applied to the structure as sloped dead loads.
- Lateral stability factor (KL) was based on user preference to use the width of all plies. (Consult with manufacturer for guideline pertaining to this design option.)
- Analysis and Design has been performed using precision loading from actual modeled conditions. Some loads may have been modified to simplify reporting.
- Tributary Loads have been generated based on actual spacing between members in the model which may differ from the default system spacing. The actual loads applied to the member are shown in the Specified Loads table.
- Transfer reactions may differ from design results as allowed per building codes and standard load distribution practices.
- This report is based on modeled conditions input by the user. Source information for the loads and supports are provided for reference only. Verify that all loads and support conditions are correct.
- Review all loads and reactions to ensure that the member/bearing/connector/structure can resist adequately. Unless already specified on this report, anchorage for uplift reactions to be specified by others. Installation of member and accessories (if required) as per manufacturer's instruction.
- When the applied loads are coming from a member/post/wall above that does not sit directly on this beam, adequate load transfer elements, such as squash blocks, wall studs, or beveled plates are required to transfer the loads to this beam.

PLY TO PLY CONNECTION

- Member design assumed proper ply to ply connection by others. Fastener spacing along length of member must not exceed 4 times depth of member. Verify connection between plies according to code specification and follow the manufacturer's installation instruction. Loads assumed to be distributed equally to each ply.



STRUCTURAL COMPONENT ONLY
DWG # TF22080200



BUILDER: **GREENPARK HOMES**
SITE: **BARLASSINA CONSTRUCTION**
MODEL: **GARDEN 11**
CITY: **CAMBRIDGE**

Job Name: **GARDEN 11 EL 1**
Level: **2ND FLR FRAMING**
Label: **B5 - i1104**
Type: **Beam**

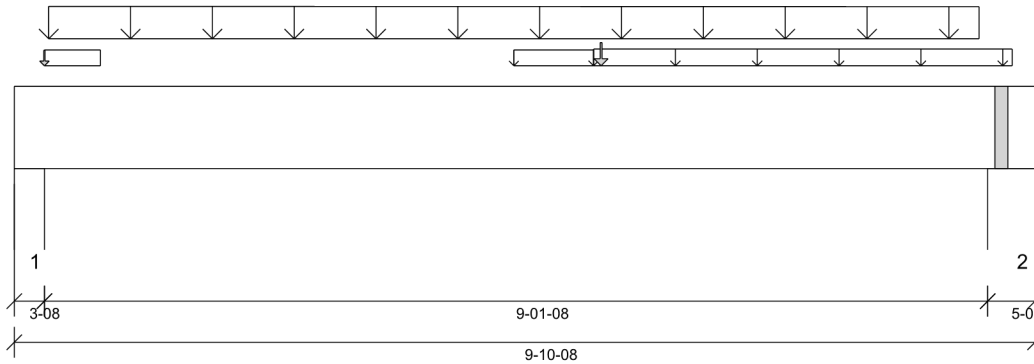
2 Ply Member
1 3/4" x 9 1/2" (2.0E 3100)
WestFraser LVL

Status:
Design Passed

Illustration Not to Scale. Pitch: 0/12

Designed by Single Member Design Engine in MiTek® Structure Version
8.5.3.233.Update5.15

Report Version: 2021.03.26 06-24-2022 07:42



DESIGN INFORMATION

Building Code: NBCC 2015, Part9, BCBC 2018,
ABC 2019, OBC 2012 (2019
Amendment)

Design Methodology: LSD

Service Condition: Dry

LL Deflection Limit: L/360,

TL Deflection Limit: L/240,

Lateral Restraint Requirements:

Both ends of the member and the outer supports
must be laterally restrained. Top and bottom edges
of the member must be fully restrained or have the
following maximum unbraced length:

Top: 0' Bottom: 0'- 9 1/2"

Factored Resistance of Support Material:

- 615 psi Wall @ 0'- 2 1/2"
- 615 psi Wall @ 9'- 6"

ANALYSIS RESULTS

Design Criteria	Location	Load Combination	LDF	Design	Limit	Result
Factored Pos. Moment:	4'- 10"	1.25D + 1.5L	1.00	5593 lb ft	23299 lb ft	Passed - 24%
Factored Shear:	8'- 7 1/2"	1.25D + 1.5L	1.00	2275 lb	11052 lb	Passed - 21%
Live Load (LL) Pos. Defl.:	4'- 10 1/2"	L		0.081"	L/360	Passed - L/999
Total Load (TL) Pos. Defl.:	4'- 10 1/2"	D + L		0.126"	L/240	Passed - L/870

SUPPORT AND REACTION INFORMATION

ID	Input Bearing Length	Controlling Load Combination	LDF	Factored Downward Reaction	Factored Uplift Reaction	Factored Resistance of Member	Factored Resistance of Support	Result
1	3-08	1.25D + 1.5L	1.00	2263 lb		12740 lb	7536 lb	Passed - 30%
2	5-08	1.25D + 1.5L	1.00	2328 lb		20020 lb	11842 lb	Passed - 20%

SPECIFIED LOADS

Type	Start Loc	End Loc	Source	Face	Dead (D)	Live (L)	Snow (S)	Wind (W)
Self Weight	0'	9'- 10 1/2"	Self Weight	Top	9 lb/ft	-	-	-
Uniform	0'- 3 1/2"	0'- 10"	FC2 Floor Decking (Plan View Fill)	Top	3 lb/ft	6 lb/ft	-	-
Uniform	4'- 10"	5'- 7 1/4"	FC2 Floor Decking (Plan View Fill)	Top	3 lb/ft	6 lb/ft	-	-
Uniform	5'- 7 1/4"	9'- 7 7/8"	FC2 Floor Decking (Plan View Fill)	Top	9 lb/ft	18 lb/ft	-	-
Tapered	0'- 4"	9'- 4"	Smoothed Load	Front	111 To 108 lb/ft	220 To 217 lb/ft	-	-
Point	5'- 8 1/8"	5'- 8 1/8"	B6(i1192)	Back	31 lb	54 lb	-	-
Point	0'- 3 1/2"	0'- 3 1/2"	FC2 Floor Decking (Plan View Fill)	Top	1 lb	1 lb	-	-

UNFACTORED REACTIONS

ID	Start Loc	End Loc	Source	Dead (D)	Live (L)	Snow (S)	Wind (W)
1	0'	0'- 3 1/2"	11(i392)	569 lb	1042 lb	-	-
2	9'- 5"	9'- 10 1/2"	10(i390)	580 lb	1060 lb	-	-

DESIGN NOTES

- The dead loads used in the design of this member were applied to the structure as sloped dead loads.
- Lateral stability factor (KL) was based on user preference to use the width of all plies. (Consult with manufacturer for guideline pertaining to this design option.)
- Analysis and Design has been performed using precision loading from actual modeled conditions. Some loads may have been modified to simplify reporting.
- Tributary Loads have been generated based on actual spacing between members in the model which may differ from the default system spacing. The actual loads applied to the member are shown in the Specified Loads table.
- Transfer reactions may differ from design results as allowed per building codes and standard load distribution practices.
- This report is based on modeled conditions input by the user. Source information for the loads and supports are provided for reference only. Verify that all loads and support conditions are correct.
- Review all loads and reactions to ensure that the member/bearing/connector/structure can resist adequately. Unless already specified on this report, anchorage for uplift reactions to be specified by others. Installation of member and accessories (if required) as per manufacturer's instruction.
- When the applied loads are coming from a member/post/wall above that does not sit directly on this beam, adequate load transfer elements, such as squash blocks, wall studs, or beveled plates are required to transfer the loads to this beam.

PLY TO PLY CONNECTION

- Member design assumed proper ply to ply connection by others. Fastener spacing along length of member must not exceed 4 times depth of member. Verify connection between plies according to code specification and follow the manufacturer's installation instruction. Loads assumed to be distributed equally to each ply.



STRUCTURAL COMPONENT ONLY
DWG # TF22080201



BUILDER: **GREENPARK HOMES**
SITE: **BARLASSINA CONSTRUCTION**
MODEL: **GARDEN 11**
CITY: **CAMBRIDGE**

Job Name: **GARDEN 11 EL 1**
Level: **2ND FLR FRAMING**
Label: **B6 - i1192**
Type: **Beam**

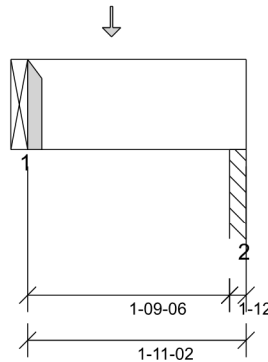
1 Ply Member
1 3/4" x 9 1/2" (2.0E 3100)
WestFraser LVL

Status:
Design Passed

Illustration Not to Scale. Pitch: 0/12

Designed by Single Member Design Engine in MiTek® Structure Version 8.5.3.233.Update5.15

Report Version: 2021.03.26 06-24-2022 07:42



DESIGN INFORMATION

Building Code: NBCC 2015, Part9, BCBC 2018, ABC 2019, OBC 2012 (2019 Amendment)

Design Methodology: LSD

Service Condition: Dry

LL Deflection Limit: L/360,

TL Deflection Limit: L/240,

Lateral Restraint Requirements:

Both ends of the member and the outer supports must be laterally restrained. Top and bottom edges of the member must be fully restrained or have the following maximum unbraced length:

Top: 0' Bottom: 1'- 1"

Factored Resistance of Support Material:

- 615 psi Beam @ 0'
- 615 psi Column @ 1'- 10 3/8"

ANALYSIS RESULTS

Design Criteria	Location	Load Combination	LDF	Design	Limit	Result
Factored Pos. Moment:	0'- 8 7/8"	1.25D + 1.5L	1.00	88 lb ft	11650 lb ft	Passed - 1%
Factored Shear:	0'- 9 1/2"	1.25D + 1.5L	1.00	116 lb	5526 lb	Passed - 2%

SUPPORT AND REACTION INFORMATION

ID	Input Bearing Length	Controlling Load Combination	LDF	Factored Downward Reaction	Factored Uplift Reaction	Factored Resistance of Member	Factored Resistance of Support	Result
1	1-08	1.25D + 1.5L	1.00	121 lb		2730 lb	-	Passed - 4%
2	1-12	1.25D + 1.5L	1.00	82 lb		3185 lb	1883 lb	Passed - 4%

CONNECTOR INFORMATION

ID	Part No.	Manufacturer	Nailing Requirements			Other Information or Requirement for Reinforcement Accessories
			Top	Face	Member	
1	HUS1.81/10		-	-	-	Connector manually specified by the user.
* Connectors: Refer to manufacturer's specifications, fasteners requirements and installation instruction. Where header fasteners are longer than the width of the supporting member, install backer block or clinch header nails.						

SPECIFIED LOADS

Type	Start Loc	End Loc	Source	Face	Dead (D)	Live (L)	Snow (S)	Wind (W)
Self Weight	0'	1'- 11 1/8"	Self Weight	Top	5 lb/ft	-	-	-
Point	0'- 8 7/8"	0'- 8 7/8"	J3(i1197)	Front	45 lb	90 lb	-	-

UNFACTORED REACTIONS

ID	Start Loc	End Loc	Source	Dead (D)	Live (L)	Snow (S)	Wind (W)
1	0'	0'	B5(i1104)	31 lb	54 lb	-	-
2	1'- 9 3/8"	1'- 11 1/8"	PBO1(i398)	23 lb	36 lb	-	-

DESIGN NOTES

- The dead loads used in the design of this member were applied to the structure as sloped dead loads.
- Analysis and Design has been performed using precision loading from actual modeled conditions. Some loads may have been modified to simplify reporting.
- Tributary Loads have been generated based on actual spacing between members in the model which may differ from the default system spacing. The actual loads applied to the member are shown in the Specified Loads table.
- Transfer reactions may differ from design results as allowed per building codes and standard load distribution practices.
- This report is based on modeled conditions input by the user. Source information for the loads and supports are provided for reference only. Verify that all loads and support conditions are correct.
- Review all loads and reactions to ensure that the member/bearing/connector/structure can resist adequately. Unless already specified on this report, anchorage for uplift reactions to be specified by others. Installation of member and accessories (if required) as per manufacturer's instruction.
- When the applied loads are coming from a member/post/wall above that does not sit directly on this beam, adequate load transfer elements, such as squash blocks, wall studs, or beveled plates are required to transfer the loads to this beam.



STRUCTURAL COMPONENT ONLY
DWG # TF22080202



BUILDER: **GREENPARK HOMES**
SITE: **BARLASSINA CONSTRUCTION**
MODEL: **GARDEN 11**
CITY: **CAMBRIDGE**

Job Name: **GARDEN 11 EL 1**
Level: **2ND FLR FRAMING**
Label: **B7 - i1196**
Type: **Beam**

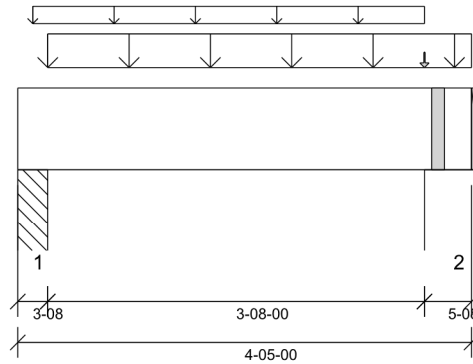
1 Ply Member
1 3/4" x 9 1/2" (2.0E 3100)
WestFraser LVL

Status:
**Design
Passed**

Illustration Not to Scale. Pitch: 0/12

Designed by Single Member Design Engine in MiTek® Structure Version
8.5.3.233.Update5.15

Report Version: 2021.03.26 06-24-2022 07:42



DESIGN INFORMATION

Building Code: NBCC 2015, Part9, BCBC 2018,
ABC 2019, OBC 2012 (2019
Amendment)

Design Methodology: LSD

Service Condition: Dry

LL Deflection Limit: L/360,

TL Deflection Limit: L/240,

Lateral Restraint Requirements:

Both ends of the member and the outer supports
must be laterally restrained. Top and bottom edges
of the member must be fully restrained or have the
following maximum unbraced length:

Top: 0'- 1 3/4" Bottom: 3'- 8"

Factored Resistance of Support Material:

- 615 psi Column @ 0'- 2 1/2"
- 615 psi Wall @ 4'- 1/2"

ANALYSIS RESULTS

Design Criteria	Location	Load Combination	LDF	Design	Limit	Result
Factored Pos. Moment:	2'- 1 5/16"	1.25D + 1.5L	1.00	1033 lb ft	11650 lb ft	Passed - 9%
Factored Shear:	3'- 2"	1.25D + 1.5L	1.00	605 lb	5526 lb	Passed - 11%

SUPPORT AND REACTION INFORMATION

ID	Input Bearing Length	Controlling Load Combination	LDF	Factored Downward Reaction	Factored Uplift Reaction	Factored Resistance of Member	Factored Resistance of Support	Result
1	3-08	1.25D + 1.5L	1.00	1051 lb		6370 lb	3767 lb	Passed - 28%
2	5-08	1.25D + 1.5L	1.00	1297 lb		10010 lb	5921 lb	Passed - 22%

SPECIFIED LOADS

Type	Start Loc	End Loc	Source	Face	Dead (D)	Live (L)	Snow (S)	Wind (W)
Self Weight	0'	4'- 5"	Self Weight	Top	5 lb/ft	-	-	-
Uniform	0'- 1 3/4"	3'- 11 1/2"	FC2 Floor Decking (Plan View Fill)	Top	13 lb/ft	27 lb/ft	-	-
Uniform	0'- 3 1/2"	4'- 5"	User Load	Top	120 lb/ft	240 lb/ft	-	-
Point	3'- 11 1/2"	3'- 11 1/2"	FC2 Floor Decking (Plan View Fill)	Top	0 lb	1 lb	-	-

UNFACTORED REACTIONS

ID	Start Loc	End Loc	Source	Dead (D)	Live (L)	Snow (S)	Wind (W)
1	0'	0'- 3 1/2"	PBO1(i398)	258 lb	496 lb	-	-
2	3'- 11 1/2"	4'- 5"	7(i354)	309 lb	596 lb	-	-

DESIGN NOTES

- The dead loads used in the design of this member were applied to the structure as sloped dead loads.
- Analysis and Design has been performed using precision loading from actual modeled conditions. Some loads may have been modified to simplify reporting.
- Tributary Loads have been generated based on actual spacing between members in the model which may differ from the default system spacing. The actual loads applied to the member are shown in the Specified Loads table.
- Transfer reactions may differ from design results as allowed per building codes and standard load distribution practices.
- This report is based on modeled conditions input by the user. Source information for the loads and supports are provided for reference only. Verify that all loads and support conditions are correct.
- Review all loads and reactions to ensure that the member/bearing/connector/structure can resist adequately. Unless already specified on this report, anchorage for uplift reactions to be specified by others. Installation of member and accessories (if required) as per manufacturer's instruction.
- When the applied loads are coming from a member/post/wall above that does not sit directly on this beam, adequate load transfer elements, such as squash blocks, wall studs, or beveled plates are required to transfer the loads to this beam.



STRUCTURAL COMPONENT ONLY
DWG # TF22080203



BUILDER: **GREENPARK HOMES**
SITE: **BARLASSINA CONSTRUCTION**
MODEL: **GARDEN 11**
CITY: **CAMBRIDGE**

Job Name: **GARDEN 11 EL 1**
Level: **1ST FLR FRAMING**
Label: **B1 - i1248**
Type: **Beam**

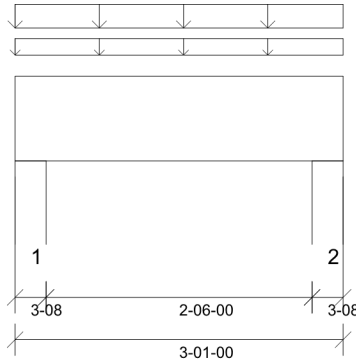
2 Ply Member
1 3/4" x 9 1/2" (2.0E 3100)
WestFraser LVL

Status:
Design Passed

Illustration Not to Scale. Pitch: 0/12

Designed by Single Member Design Engine in MiTek® Structure Version 8.5.3.233.Update5.15

Report Version: 2021.03.26 06-24-2022 07:42



DESIGN INFORMATION

Building Code: NBCC 2015, Part9, BCBC 2018, ABC 2019, OBC 2012 (2019 Amendment)

Design Methodology: LSD

Service Condition: Dry

LL Deflection Limit: L/360,

TL Deflection Limit: L/240,

Lateral Restraint Requirements:

Both ends of the member and the outer supports must be laterally restrained. Top and bottom edges of the member must be fully restrained or have the following maximum unbraced length:

Top: 0' Bottom: 3'- 1"

Factored Resistance of Support Material:

- 615 psi Wall @ 0'- 2 1/2"
- 615 psi Wall @ 2'- 10 1/2"

ANALYSIS RESULTS

Design Criteria	Location	Load Combination	LDF	Design	Limit	Result
Factored Pos. Moment:	1'- 6 1/2"	1.25D + 1.5L	0.72	192 lb ft	16807 lb ft	Passed - 1%
Factored Shear:	2'	1.25D + 1.5L	0.72	102 lb	7972 lb	Passed - 1%

SUPPORT AND REACTION INFORMATION

ID	Input Bearing Length	Controlling Load Combination	LDF	Factored Downward Reaction	Factored Uplift Reaction	Factored Resistance of Member	Factored Resistance of Support	Result
1	3-08	1.25D + 1.5L	0.72	342 lb		9190 lb	5436 lb	Passed - 6%
2	3-08	1.25D + 1.5L	0.72	342 lb		9190 lb	5436 lb	Passed - 6%

SPECIFIED LOADS

Type	Start Loc	End Loc	Source	Face	Dead (D)	Live (L)	Snow (S)	Wind (W)
Self Weight	0'	3'- 1"	Self Weight	Top	9 lb/ft	-	-	-
Uniform	0'	3'- 1"	E8(i353)	Top	120 lb/ft	29 lb/ft	-	-
Uniform	0'	3'- 1"	FC1 Floor Decking (Plan View Fill)	Top	4 lb/ft	8 lb/ft	-	-

UNFACTORED REACTIONS

ID	Start Loc	End Loc	Source	Dead (D)	Live (L)	Snow (S)	Wind (W)
1	0'	0'- 3 1/2"	W27(i27)	205 lb	57 lb	-	-
2	2'- 9 1/2"	3'- 1"	W14(i13)	205 lb	57 lb	-	-

DESIGN NOTES

- The dead loads used in the design of this member were applied to the structure as sloped dead loads.
- Lateral stability factor (KL) was based on user preference to use the width of all plies. (Consult with manufacturer for guideline pertaining to this design option.)
- Analysis and Design has been performed using precision loading from actual modeled conditions. Some loads may have been modified to simplify reporting.
- Tributary Loads have been generated based on actual spacing between members in the model which may differ from the default system spacing. The actual loads applied to the member are shown in the Specified Loads table.
- Transfer reactions may differ from design results as allowed per building codes and standard load distribution practices.
- This report is based on modeled conditions input by the user. Source information for the loads and supports are provided for reference only. Verify that all loads and support conditions are correct.
- Review all loads and reactions to ensure that the member/bearing/connector/structure can resist adequately. Unless already specified on this report, anchorage for uplift reactions to be specified by others. Installation of member and accessories (if required) as per manufacturer's instruction.
- When the applied loads are coming from a member/post/wall above that does not sit directly on this beam, adequate load transfer elements, such as squash blocks, wall studs, or beveled plates are required to transfer the loads to this beam.

PLY TO PLY CONNECTION

- Member design assumed proper ply to ply connection by others. Fastener spacing along length of member must not exceed 4 times depth of member. Verify connection between plies according to code specification and follow the manufacturer's installation instruction. Loads assumed to be distributed equally to each ply.

PLY TO PLY CONNECTION:
3 ROWS OF 3.25" PNEUMATIC GUN
NAILS (0.120"x3.25") @ 4" O/C

PLY TO PLY CONNECTION ASSUMES ANY
SUPPORTED BEAM HANGERS ARE FASTENED
TO THIS BEAM WITH MIN. 3.5" FASTENERS.



STRUCTURAL COMPONENT ONLY
DWG # TF22080204



BUILDER: **GREENPARK HOMES**
SITE: **BARLASSINA CONSTRUCTION**
MODEL: **GARDEN 11**
CITY: **CAMBRIDGE**

Job Name: **GARDEN 11 EL 1**
Level: **1ST FLR FRAMING**
Label: **B2 - i631**
Type: **Beam**

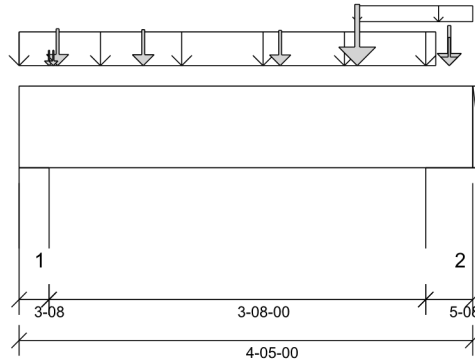
1 Ply Member
1 3/4" x 9 1/2" (2.0E 3100)
WestFraser LVL

Status:
Design Passed

Illustration Not to Scale. Pitch: 0/12

Designed by Single Member Design Engine in MiTek® Structure Version 8.5.3.233.Update5.15

Report Version: 2021.03.26 06-24-2022 07:42



DESIGN INFORMATION

Building Code: NBCC 2015, Part9, BCBC 2018, ABC 2019, OBC 2012 (2019 Amendment)
Design Methodology: LSD
Service Condition: Dry
LL Deflection Limit: L/360,
TL Deflection Limit: L/240,

Lateral Restraint Requirements:

Both ends of the member and the outer supports must be laterally restrained. Top and bottom edges of the member must be fully restrained or have the following maximum unbraced length:
Top: 0' Bottom: 1'- 1 1/2"

Factored Resistance of Support Material:

- 615 psi Wall @ 0'- 2 1/2"
- 615 psi Wall @ 4'- 1/2"

ANALYSIS RESULTS

Design Criteria	Location	Load Combination	LDF	Design	Limit	Result
Factored Pos. Moment:	2'- 6 1/4"	1.25D + 1.5L	1.00	1905 lb ft	11650 lb ft	Passed - 16%
Factored Neg. Moment:	4'- 1/2"	1.25D + 1.5L	1.00	123 lb ft	11650 lb ft	Passed - 1%
Factored Shear:	3'- 2"	1.25D + 1.5L	1.00	1791 lb	5526 lb	Passed - 32%
Live Load (LL) Pos. Defl.:	2'- 1 7/8"	L		0.010"	L/360	Passed - L/999
Total Load (TL) Pos. Defl.:	2'- 1 7/8"	D + L		0.015"	L/240	Passed - L/999

SUPPORT AND REACTION INFORMATION

ID	Input Bearing Length	Controlling Load Combination	LDF	Factored Downward Reaction	Factored Uplift Reaction	Factored Resistance of Member	Factored Resistance of Support	Result
1	3-08	1.25D + 1.5L	1.00	2238 lb		6370 lb	3768 lb	Passed - 59%
2	5-08	1.25D + 1.5L	1.00	3102 lb		10010 lb	5921 lb	Passed - 52%

SPECIFIED LOADS

Type	Start Loc	End Loc	Source	Face	Dead (D)	Live (L)	Snow (S)	Wind (W)
Self Weight	0'	4'- 5"	Self Weight	Top	5 lb/ft	-	-	-
Uniform	0'	4'- 11/16"	User Load	Top	120 lb/ft	240 lb/ft	-	-
Uniform	3'- 3 1/2"	4'- 5"	FC1 Floor Decking (Plan View Fill)	Top	4 lb/ft	9 lb/ft	-	-
Point	0'- 4 1/2"	0'- 4 1/2"	J1DJ(i575)	Front	112 lb	225 lb	-	-
Point	1'- 2 1/2"	1'- 2 1/2"	J2(i1057)	Front	108 lb	216 lb	-	-
Point	2'- 6 1/2"	2'- 6 1/2"	J2(i1108)	Front	104 lb	208 lb	-	-
Point	3'- 3 1/2"	3'- 3 1/2"	J1DJ(i603)	Front	257 lb	462 lb	-	-
Point	0'- 3 1/2"	0'- 3 1/2"	FC1 Floor Decking (Plan View Fill)	Top	0 lb	1 lb	-	-
Point	0'- 4"	0'- 4"	FC1 Floor Decking (Plan View Fill)	Top	0 lb	0 lb	-	-
Point	4'- 2 1/4"	4'- 2 1/4"	10(i390)	Top	145 lb	243 lb	-	-
Point	4'- 2 1/4"	4'- 2 1/4"	FC1 Floor Decking (Plan View Fill)	Top	75 lb	126 lb	-	-

UNFACTORED REACTIONS

ID	Start Loc	End Loc	Source	Dead (D)	Live (L)	Snow (S)	Wind (W)
1	0'	0'- 3 1/2"	4(i33)	549 lb	1070 lb	-	-
2	3'- 11 1/2"	4'- 5"	W24(i24)	765 lb	1395 lb	-	-

DESIGN NOTES

- The dead loads used in the design of this member were applied to the structure as sloped dead loads.
- Analysis and Design has been performed using precision loading from actual modeled conditions. Some loads may have been modified to simplify reporting.
- Tributary Loads have been generated based on actual spacing between members in the model which may differ from the default system spacing. The actual loads applied to the member are shown in the Specified Loads table.
- Transfer reactions may differ from design results as allowed per building codes and standard load distribution practices.
- This report is based on modeled conditions input by the user. Source information for the loads and supports are provided for reference only. Verify that all loads and support conditions are correct.
- Review all loads and reactions to ensure that the member/bearing/connector/structure can resist adequately. Unless already specified on this report, anchorage for uplift reactions to be specified by others. Installation of member and accessories (if required) as per manufacturer's instruction.
- When the applied loads are coming from a member/post/wall above that does not sit directly on this beam, adequate load transfer elements, such as squash blocks, wall studs, or beveled plates are required to transfer the loads to this beam.



STRUCTURAL COMPONENT ONLY
DWG # TF22080205



BUILDER: **GREENPARK HOMES**
SITE: **BARLASSINA CONSTRUCTION**
MODEL: **GARDEN 11**
CITY: **CAMBRIDGE**

Job Name: **GARDEN 11 EL 1**
Level: **1ST FLR FRAMING**
Label: **B3 - i635**
Type: **Beam**

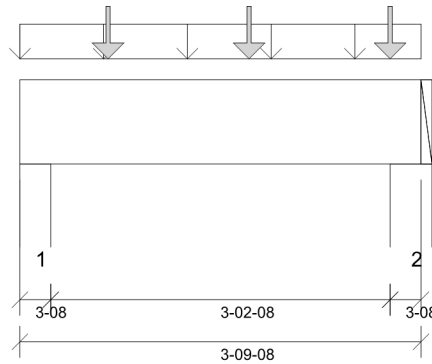
1 Ply Member
1 3/4" x 9 1/2" (2.0E 3100)
WestFraser LVL

Status:
Design Passed

Illustration Not to Scale. Pitch: 0/12

Designed by Single Member Design Engine in MiTek® Structure Version 8.5.3.233.Update5.15

Report Version: 2021.03.26 06-24-2022 07:42



DESIGN INFORMATION

Building Code: NBCC 2015, Part9, BCBC 2018, ABC 2019, OBC 2012 (2019 Amendment)

Design Methodology: LSD

Service Condition: Dry

LL Deflection Limit: L/360,

TL Deflection Limit: L/240,

Lateral Restraint Requirements:

Both ends of the member and the outer supports must be laterally restrained. Top and bottom edges of the member must be fully restrained or have the following maximum unbraced length:

Top: 0' Bottom: 1'- 1 1/2"

Factored Resistance of Support Material:

- 615 psi Wall @ 0'- 2 1/2"
- 615 psi Wall @ 3'- 7"

ANALYSIS RESULTS

Design Criteria	Location	Load Combination	LDF	Design	Limit	Result
Factored Pos. Moment:	2'- 2"	1.25D + 1.5L	1.00	1327 lb ft	11650 lb ft	Passed - 11%
Factored Shear:	1'- 1"	1.25D + 1.5L	1.00	1111 lb	5526 lb	Passed - 20%

SUPPORT AND REACTION INFORMATION

ID	Input Bearing Length	Controlling Load Combination	LDF	Factored Downward Reaction	Factored Uplift Reaction	Factored Resistance of Member	Factored Resistance of Support	Result
1	3-08	1.25D + 1.5L	1.00	1670 lb		6370 lb	3768 lb	Passed - 44%
2	3-08	1.25D + 1.5L	1.00	1935 lb		6370 lb	3768 lb	Passed - 51%

SPECIFIED LOADS

Type	Start Loc	End Loc	Source	Face	Dead (D)	Live (L)	Snow (S)	Wind (W)
Self Weight	0'	3'- 9 1/2"	Self Weight	Top	5 lb/ft	-	-	-
Uniform	0'	3'- 9 1/2"	User Load	Top	120 lb/ft	240 lb/ft	-	-
Point	0'- 10"	0'- 10"	J2(i660)	Front	129 lb	259 lb	-	-
Point	2'- 2"	2'- 2"	J2(i638)	Front	129 lb	259 lb	-	-
Point	3'- 6"	3'- 6"	J2(i606)	Front	129 lb	259 lb	-	-

UNFACTORED REACTIONS

ID	Start Loc	End Loc	Source	Dead (D)	Live (L)	Snow (S)	Wind (W)
1	0'	0'- 3 1/2"	1(i29)	396 lb	775 lb	-	-
2	3'- 6"	3'- 9 1/2"	2(i31)	464 lb	912 lb	-	-

DESIGN NOTES

- The dead loads used in the design of this member were applied to the structure as sloped dead loads.
- Analysis and Design has been performed using precision loading from actual modeled conditions. Some loads may have been modified to simplify reporting.
- Tributary Loads have been generated based on actual spacing between members in the model which may differ from the default system spacing. The actual loads applied to the member are shown in the Specified Loads table.
- Transfer reactions may differ from design results as allowed per building codes and standard load distribution practices.
- This report is based on modeled conditions input by the user. Source information for the loads and supports are provided for reference only. Verify that all loads and support conditions are correct.
- Review all loads and reactions to ensure that the member/bearing/connector/structure can resist adequately. Unless already specified on this report, anchorage for uplift reactions to be specified by others. Installation of member and accessories (if required) as per manufacturer's instruction.
- When the applied loads are coming from a member/post/wall above that does not sit directly on this beam, adequate load transfer elements, such as squash blocks, wall studs, or beveled plates are required to transfer the loads to this beam.



STRUCTURAL COMPONENT ONLY
DWG # TF22080206

Maximum Floor Spans – S2.1

Design Criteria

Spans:	Simple span
Loads:	Live load = 40 psf and dead load = 15 psf
Deflection limits:	L/480 under live load and L/240 under total load
Sheathing:	5/8 in. nailed-glued oriented strand board (OSB) sheathing

Maximum Floor Spans

Joist depth	Joist series	Bare On centre spacing				1/2 in. gypsum ceiling On centre spacing			
		12"	16"	19.2"	24"	12"	16"	19.2"	24"
9-1/2"	NI-20	15'-1"	14'-3"	13'-10"	-	15'-7"	14'-9"	14'-3"	-
	NI-40x	16'-2"	15'-3"	14'-8"	-	16'-7"	15'-8"	15'-1"	-
	NI-60	16'-4"	15'-4"	14'-10"	-	16'-9"	15'-9"	15'-3"	-
	NI-80	17'-3"	16'-3"	15'-8"	-	17'-8"	16'-7"	16'-0"	-
11-7/8"	NI-20	17'-0"	16'-0"	15'-6"	-	17'-6"	16'-7"	16'-0"	-
	NI-40x	18'-2"	17'-1"	16'-6"	-	18'-9"	17'-6"	16'-11"	-
	NI-60	18'-5"	17'-3"	16'-8"	-	19'-0"	17'-8"	17'-1"	-
	NI-80	19'-9"	18'-3"	17'-7"	-	20'-4"	18'-10"	18'-0"	-
	NI-90	20'-2"	18'-8"	17'-10"	-	20'-9"	19'-2"	18'-4"	-
14"	NI-40x	20'-1"	18'-8"	17'-10"	-	20'-10"	19'-4"	18'-6"	-
	NI-60	20'-6"	18'-11"	18'-2"	-	21'-2"	19'-8"	18'-9"	-
	NI-80	21'-11"	20'-3"	19'-4"	-	22'-7"	20'-11"	20'-0"	-
	NI-90	22'-5"	20'-8"	19'-9"	-	23'-0"	21'-4"	20'-4"	-
16"	NI-60	22'-4"	20'-8"	19'-9"	-	23'-1"	21'-5"	20'-6"	-
	NI-80	23'-11"	22'-1"	21'-1"	-	24'-8"	22'-10"	21'-9"	-
	NI-90	24'-5"	22'-6"	21'-6"	-	25'-1"	23'-2"	22'-2"	-

Joist depth	Joist series	Mid-span blocking with 1x4 inch strap On centre spacing				Mid-span blocking and 1/2 in. gypsum ceiling On centre spacing			
		12"	16"	19.2"	24"	12"	16"	19.2"	24"
9-1/2"	NI-20	16'-8"	15'-3"	14'-5"	-	16'-8"	15'-3"	14'-5"	-
	NI-40x	17'-11"	17'-0"	16'-1"	-	18'-5"	17'-1"	16'-1"	-
	NI-60	18'-2"	17'-1"	16'-4"	-	18'-8"	17'-4"	16'-4"	-
	NI-80	19'-5"	18'-0"	17'-5"	-	19'-10"	18'-5"	17'-8"	-
11-7/8"	NI-20	19'-7"	18'-2"	17'-3"	-	19'-11"	18'-3"	17'-3"	-
	NI-40x	21'-1"	19'-7"	18'-8"	-	21'-8"	20'-2"	19'-2"	-
	NI-60	21'-4"	19'-9"	18'-11"	-	21'-11"	20'-5"	19'-6"	-
	NI-80	22'-9"	21'-1"	20'-2"	-	23'-3"	21'-8"	20'-8"	-
	NI-90	23'-3"	21'-6"	20'-6"	-	23'-9"	22'-0"	21'-0"	-
14"	NI-40x	23'-8"	21'-11"	20'-11"	-	24'-4"	22'-8"	21'-8"	-
	NI-60	24'-0"	22'-3"	21'-3"	-	24'-8"	22'-11"	21'-11"	-
	NI-80	25'-7"	23'-9"	22'-7"	-	26'-2"	24'-4"	23'-3"	-
	NI-90	26'-1"	24'-2"	23'-0"	-	26'-8"	24'-9"	23'-7"	-
16"	NI-60	26'-5"	24'-6"	23'-5"	-	27'-2"	25'-3"	24'-2"	-
	NI-80	28'-2"	26'-1"	24'-10"	-	28'-10"	26'-9"	25'-6"	-
	NI-90	28'-8"	26'-6"	25'-3"	-	29'-3"	27'-2"	25'-11"	-

Notes:

1. The tabulated clear spans are based on CSA O86-14 and NBC 2015, and are applicable to residential floor construction meeting the above design criteria.
2. For multiple-span applications, the end spans shall be 40% or more of the adjacent span.
3. Minimum bearing length shall be 1-3/4 inch for end bearings, and 3-1/2 inches for intermediate bearings.
4. Bearing stiffeners are not required when I-joists are used in accordance with this table, except as required for hangers.
5. Nordic I-joists are listed in CCMC Evaluation Report 13032-R and APA Product Report PR-L274C.

Maximum Floor Spans – S4.1

Design Criteria

Spans:	Simple span
Loads:	Live load = 40 psf and dead load = 15 psf
Deflection limits:	L/480 under live load and L/240 under total load
Sheathing:	3/4 in. nailed-glued oriented strand board (OSB) sheathing

Maximum Floor Spans

Joist depth	Joist series	Bare On centre spacing				1/2 in. gypsum ceiling On centre spacing			
		12"	16"	19.2"	24"	12"	16"	19.2"	24"
9-1/2"	NI-20	15'-11"	15'-0"	14'-6"	13'-5"	16'-5"	15'-5"	14'-6"	13'-5"
	NI-40x	17'-0"	16'-0"	15'-5"	14'-10"	17'-5"	16'-5"	15'-10"	15'-2"
	NI-60	17'-2"	16'-2"	15'-7"	14'-11"	17'-7"	16'-7"	16'-0"	15'-4"
	NI-80	18'-3"	17'-1"	16'-5"	15'-9"	18'-8"	17'-5"	16'-9"	16'-1"
11-7/8"	NI-20	17'-11"	16'-11"	16'-3"	15'-8"	18'-7"	17'-5"	16'-10"	16'-2"
	NI-40x	19'-4"	17'-11"	17'-3"	16'-7"	19'-11"	18'-6"	17'-9"	17'-0"
	NI-60	19'-7"	18'-2"	17'-6"	16'-9"	20'-2"	18'-9"	17'-11"	17'-2"
	NI-80	21'-1"	19'-6"	18'-6"	17'-7"	21'-7"	20'-0"	19'-0"	18'-0"
	NI-90	21'-6"	19'-10"	18'-11"	17'-11"	22'-0"	20'-4"	19'-5"	18'-4"
14"	NI-40x	21'-5"	19'-11"	18'-11"	18'-0"	22'-1"	20'-7"	19'-7"	18'-7"
	NI-60	21'-10"	20'-2"	19'-3"	18'-3"	22'-6"	20'-10"	19'-11"	18'-10"
	NI-80	23'-5"	21'-7"	20'-7"	19'-5"	24'-0"	22'-3"	21'-2"	20'-0"
	NI-90	23'-10"	22'-1"	21'-0"	19'-10"	24'-5"	22'-7"	21'-6"	20'-4"
16"	NI-60	23'-9"	22'-0"	21'-0"	19'-10"	24'-6"	22'-9"	21'-8"	20'-7"
	NI-80	25'-6"	23'-7"	22'-5"	21'-2"	26'-2"	24'-3"	23'-1"	21'-10"
	NI-90	26'-0"	24'-0"	22'-10"	21'-6"	26'-7"	24'-8"	23'-5"	22'-2"

Joist depth	Joist series	Mid-span blocking with 1x4 inch strap On centre spacing				Mid-span blocking and 1/2 in. gypsum ceiling On centre spacing			
		12"	16"	19.2"	24"	12"	16"	19.2"	24"
9-1/2"	NI-20	16'-10"	15'-5"	14'-6"	13'-5"	16'-10"	15'-5"	14'-6"	13'-5"
	NI-40x	18'-8"	17'-2"	16'-3"	15'-2"	18'-10"	17'-2"	16'-3"	15'-2"
	NI-60	18'-11"	17'-6"	16'-6"	15'-5"	19'-2"	17'-6"	16'-6"	15'-5"
	NI-80	20'-3"	18'-10"	17'-11"	16'-10"	20'-8"	19'-3"	18'-2"	16'-10"
11-7/8"	NI-20	20'-1"	18'-5"	17'-5"	16'-2"	20'-1"	18'-5"	17'-5"	16'-2"
	NI-40x	21'-10"	20'-4"	19'-4"	17'-8"	22'-5"	20'-6"	19'-4"	17'-8"
	NI-60	22'-1"	20'-7"	19'-8"	18'-4"	22'-8"	20'-10"	19'-8"	18'-4"
	NI-80	23'-8"	22'-0"	20'-11"	19'-10"	24'-1"	22'-6"	21'-6"	20'-0"
	NI-90	24'-1"	22'-5"	21'-4"	20'-2"	24'-7"	22'-11"	21'-10"	20'-7"
14"	NI-40x	24'-5"	22'-9"	21'-9"	19'-5"	25'-1"	23'-2"	21'-9"	19'-5"
	NI-60	24'-10"	23'-2"	22'-1"	20'-10"	25'-6"	23'-8"	22'-4"	20'-10"
	NI-80	26'-6"	24'-8"	23'-6"	22'-2"	27'-1"	25'-3"	24'-1"	22'-9"
	NI-90	27'-0"	25'-1"	23'-11"	22'-7"	27'-6"	25'-8"	24'-6"	23'-2"
16"	NI-60	27'-3"	25'-5"	24'-3"	22'-11"	28'-0"	26'-2"	24'-9"	23'-1"
	NI-80	29'-1"	27'-1"	25'-9"	24'-4"	29'-8"	27'-9"	26'-5"	25'-0"
	NI-90	29'-7"	27'-6"	26'-2"	24'-9"	30'-2"	28'-2"	26'-10"	25'-5"

Notes:

1. The tabulated clear spans are based on CSA O86-14 and NBC 2015, and are applicable to residential floor construction meeting the above design criteria.
2. For multiple-span applications, the end spans shall be 40% or more of the adjacent span.
3. Minimum bearing length shall be 1-3/4 inch for end bearings, and 3-1/2 inches for intermediate bearings.
4. Bearing stiffeners are not required when I-joists are used in accordance with this table, except as required for hangers.
5. Nordic I-joists are listed in CCMC Evaluation Report 13032-R and APA Product Report PR-L274C.

Maximum Floor Spans – S6.1

Design Criteria

Spans:	Simple span
Loads:	Live load = 40 psf and dead load = 15 psf
Deflection limits:	L/480 under live load and L/240 under total load
Sheathing:	5/8 in. nailed-glued Canadian softwood plywood

Maximum Floor Spans

Joist depth	Joist series	Bare On centre spacing				1/2 in. gypsum ceiling On centre spacing			
		12"	16"	19.2"	24"	12"	16"	19.2"	24"
9-1/2"	NI-20	14'-11"	14'-1"	13'-7"	-	15'-4"	14'-6"	14'-1"	-
	NI-40x	15'-11"	15'-0"	14'-6"	-	16'-4"	15'-5"	14'-11"	-
	NI-60	16'-1"	15'-2"	14'-8"	-	16'-6"	15'-7"	15'-1"	-
	NI-80	17'-1"	16'-1"	15'-6"	-	17'-5"	16'-5"	15'-10"	-
11-7/8"	NI-20	16'-9"	15'-10"	15'-4"	-	17'-4"	16'-4"	15'-10"	-
	NI-40x	17'-10"	16'-10"	16'-3"	-	18'-6"	17'-4"	16'-9"	-
	NI-60	18'-1"	17'-0"	16'-5"	-	18'-9"	17'-6"	16'-11"	-
	NI-80	19'-6"	18'-0"	17'-4"	-	20'-1"	18'-7"	17'-9"	-
	NI-90	19'-11"	18'-4"	17'-8"	-	20'-5"	18'-11"	18'-1"	-
14"	NI-40x	19'-10"	18'-4"	17'-8"	-	20'-6"	19'-1"	18'-3"	-
	NI-60	20'-2"	18'-8"	17'-11"	-	20'-10"	19'-4"	18'-6"	-
	NI-80	21'-8"	20'-0"	19'-1"	-	22'-4"	20'-8"	19'-9"	-
	NI-90	22'-1"	20'-5"	19'-6"	-	22'-9"	21'-0"	20'-1"	-
16"	NI-60	22'-0"	20'-4"	19'-6"	-	22'-9"	21'-1"	20'-2"	-
	NI-80	23'-7"	21'-10"	20'-10"	-	24'-4"	22'-6"	21'-6"	-
	NI-90	24'-1"	22'-2"	21'-2"	-	24'-9"	22'-11"	21'-10"	-

Joist depth	Joist series	Mid-span blocking with 1x4 inch strap On centre spacing				Mid-span blocking and 1/2 in. gypsum ceiling On centre spacing			
		12"	16"	19.2"	24"	12"	16"	19.2"	24"
9-1/2"	NI-20	16'-6"	15'-1"	14'-3"	-	16'-6"	15'-1"	14'-3"	-
	NI-40x	17'-9"	16'-10"	15'-11"	-	18'-2"	16'-11"	15'-11"	-
	NI-60	17'-11"	16'-11"	16'-2"	-	18'-5"	17'-2"	16'-2"	-
	NI-80	19'-3"	17'-10"	17'-3"	-	19'-8"	18'-3"	17'-7"	-
11-7/8"	NI-20	19'-4"	18'-0"	17'-1"	-	19'-9"	18'-1"	17'-1"	-
	NI-40x	20'-10"	19'-4"	18'-6"	-	21'-5"	19'-11"	19'-0"	-
	NI-60	21'-1"	19'-7"	18'-8"	-	21'-8"	20'-2"	19'-3"	-
	NI-80	22'-6"	20'-10"	19'-11"	-	23'-1"	21'-5"	20'-5"	-
	NI-90	23'-0"	21'-3"	20'-4"	-	23'-6"	21'-10"	20'-10"	-
14"	NI-40x	23'-5"	21'-8"	20'-9"	-	24'-0"	22'-5"	21'-5"	-
	NI-60	23'-9"	22'-0"	21'-0"	-	24'-5"	22'-8"	21'-8"	-
	NI-80	25'-4"	23'-6"	22'-5"	-	25'-11"	24'-1"	23'-0"	-
	NI-90	25'-10"	23'-11"	22'-9"	-	26'-5"	24'-6"	23'-4"	-
16"	NI-60	26'-2"	24'-3"	23'-2"	-	26'-11"	25'-0"	23'-11"	-
	NI-80	27'-11"	25'-10"	24'-7"	-	28'-7"	26'-6"	25'-3"	-
	NI-90	28'-5"	26'-3"	25'-0"	-	29'-0"	26'-11"	25'-8"	-

Notes:

1. The tabulated clear spans are based on CSA O86-14 and NBC 2015, and are applicable to residential floor construction meeting the above design criteria.
2. For multiple-span applications, the end spans shall be 40% or more of the adjacent span.
3. Minimum bearing length shall be 1-3/4 inch for end bearings, and 3-1/2 inches for intermediate bearings.
4. Bearing stiffeners are not required when I-joists are used in accordance with this table, except as required for hangers.
5. Nordic I-joists are listed in CCMC Evaluation Report 13032-R and APA Product Report PR-L274C.

Maximum Floor Spans – S7.1

Design Criteria

Spans:	Simple span
Loads:	Live load = 40 psf and dead load = 15 psf
Deflection limits:	L/480 under live load and L/240 under total load
Sheathing:	3/4 in. nailed-glued Canadian softwood plywood

Maximum Floor Spans

Joist depth	Joist series	Bare On centre spacing				1/2 in. gypsum ceiling On centre spacing			
		12"	16"	19.2"	24"	12"	16"	19.2"	24"
9-1/2"	NI-20	15'-10"	15'-0"	14'-5"	13'-5"	16'-4"	15'-5"	14'-6"	13'-5"
	NI-40x	16'-11"	15'-11"	15'-4"	14'-9"	17'-4"	16'-4"	15'-9"	15'-1"
	NI-60	17'-1"	16'-1"	15'-6"	14'-10"	17'-6"	16'-6"	15'-11"	15'-3"
	NI-80	18'-1"	17'-0"	16'-4"	15'-8"	18'-7"	17'-4"	16'-8"	16'-0"
11-7/8"	NI-20	17'-10"	16'-10"	16'-2"	15'-7"	18'-5"	17'-4"	16'-9"	16'-1"
	NI-40x	19'-3"	17'-10"	17'-2"	16'-6"	19'-10"	18'-5"	17'-8"	16'-11"
	NI-60	19'-6"	18'-1"	17'-4"	16'-8"	20'-1"	18'-8"	17'-10"	17'-1"
	NI-80	20'-11"	19'-4"	18'-5"	17'-7"	21'-5"	19'-10"	18'-11"	17'-11"
	NI-90	21'-4"	19'-9"	18'-9"	17'-10"	21'-10"	20'-3"	19'-3"	18'-3"
14"	NI-40x	21'-4"	19'-9"	18'-10"	17'-11"	22'-0"	20'-5"	19'-6"	18'-6"
	NI-60	21'-8"	20'-1"	19'-2"	18'-2"	22'-4"	20'-9"	19'-9"	18'-9"
	NI-80	23'-3"	21'-6"	20'-5"	19'-4"	23'-10"	22'-1"	21'-0"	19'-11"
	NI-90	23'-9"	21'-11"	20'-10"	19'-8"	24'-3"	22'-6"	21'-5"	20'-3"
16"	NI-60	23'-7"	21'-10"	20'-10"	19'-9"	24'-4"	22'-7"	21'-7"	20'-5"
	NI-80	25'-4"	23'-5"	22'-3"	21'-1"	26'-0"	24'-1"	22'-11"	21'-8"
	NI-90	25'-10"	23'-10"	22'-8"	21'-5"	26'-5"	24'-6"	23'-4"	22'-0"

Joist depth	Joist series	Mid-span blocking with 1x4 inch strap On centre spacing				Mid-span blocking and 1/2 in. gypsum ceiling On centre spacing			
		12"	16"	19.2"	24"	12"	16"	19.2"	24"
9-1/2"	NI-20	16'-10"	15'-5"	14'-6"	13'-5"	16'-10"	15'-5"	14'-6"	13'-5"
	NI-40x	18'-7"	17'-2"	16'-3"	15'-2"	18'-10"	17'-2"	16'-3"	15'-2"
	NI-60	18'-10"	17'-6"	16'-6"	15'-5"	19'-1"	17'-6"	16'-6"	15'-5"
	NI-80	20'-2"	18'-9"	17'-11"	16'-10"	20'-7"	19'-2"	18'-2"	16'-10"
11-7/8"	NI-20	20'-1"	18'-5"	17'-5"	16'-2"	20'-1"	18'-5"	17'-5"	16'-2"
	NI-40x	21'-9"	20'-3"	19'-4"	17'-8"	22'-4"	20'-5"	19'-4"	17'-8"
	NI-60	22'-0"	20'-6"	19'-7"	18'-4"	22'-7"	20'-10"	19'-8"	18'-4"
	NI-80	23'-6"	21'-10"	20'-10"	19'-9"	24'-0"	22'-5"	21'-4"	20'-0"
	NI-90	24'-0"	22'-4"	21'-3"	20'-1"	24'-6"	22'-10"	21'-9"	20'-7"
14"	NI-40x	24'-4"	22'-8"	21'-8"	19'-5"	25'-0"	23'-2"	21'-9"	19'-5"
	NI-60	24'-9"	23'-0"	22'-0"	20'-9"	25'-5"	23'-8"	22'-4"	20'-10"
	NI-80	26'-5"	24'-6"	23'-4"	22'-1"	27'-0"	25'-2"	24'-0"	22'-8"
	NI-90	26'-11"	25'-0"	23'-10"	22'-6"	27'-5"	25'-7"	24'-5"	23'-1"
16"	NI-60	27'-2"	25'-4"	24'-2"	22'-10"	27'-11"	26'-1"	24'-9"	23'-1"
	NI-80	29'-0"	26'-11"	25'-8"	24'-3"	29'-7"	27'-7"	26'-4"	24'-11"
	NI-90	29'-6"	27'-5"	26'-1"	24'-8"	30'-1"	28'-1"	26'-9"	25'-4"

Notes:

1. The tabulated clear spans are based on CSA O86-14 and NBC 2015, and are applicable to residential floor construction meeting the above design criteria.
2. For multiple-span applications, the end spans shall be 40% or more of the adjacent span.
3. Minimum bearing length shall be 1-3/4 inch for end bearings, and 3-1/2 inches for intermediate bearings.
4. Bearing stiffeners are not required when I-joists are used in accordance with this table, except as required for hangers.
5. Nordic I-joists are listed in CCMC Evaluation Report 13032-R and APA Product Report PR-L274C.

Maximum Floor Spans – M2.1

Design Criteria

Spans:	Simple span
Loads:	Live load = 40 psf and dead load = 20 psf
Deflection limits:	L/480 under live load and L/240 under total load
Sheathing:	5/8 in. nailed-glued oriented strand board (OSB) sheathing

Maximum Floor Spans

Joist depth	Joist series	Bare On centre spacing				1/2 in. gypsum ceiling On centre spacing			
		12"	16"	19.2"	24"	12"	16"	19.2"	24"
9-1/2"	NI-20	15'-1"	14'-3"	13'-10"	-	15'-7"	14'-9"	14'-3"	-
	NI-40x	16'-2"	15'-3"	14'-8"	-	16'-7"	15'-8"	15'-1"	-
	NI-60	16'-4"	15'-4"	14'-10"	-	16'-9"	15'-9"	15'-3"	-
	NI-80	17'-3"	16'-3"	15'-8"	-	17'-8"	16'-7"	16'-0"	-
11-7/8"	NI-20	17'-0"	16'-0"	15'-6"	-	17'-6"	16'-7"	16'-0"	-
	NI-40x	18'-2"	17'-1"	16'-6"	-	18'-9"	17'-6"	16'-11"	-
	NI-60	18'-5"	17'-3"	16'-8"	-	19'-0"	17'-8"	17'-1"	-
	NI-80	19'-9"	18'-3"	17'-7"	-	20'-4"	18'-10"	18'-0"	-
	NI-90	20'-2"	18'-8"	17'-10"	-	20'-9"	19'-2"	18'-4"	-
14"	NI-40x	20'-1"	18'-8"	17'-10"	-	20'-10"	19'-4"	18'-6"	-
	NI-60	20'-6"	18'-11"	18'-2"	-	21'-2"	19'-8"	18'-9"	-
	NI-80	21'-11"	20'-3"	19'-4"	-	22'-7"	20'-11"	20'-0"	-
	NI-90	22'-5"	20'-8"	19'-9"	-	23'-0"	21'-4"	20'-4"	-
16"	NI-60	22'-4"	20'-8"	19'-9"	-	23'-1"	21'-5"	20'-6"	-
	NI-80	23'-11"	22'-1"	21'-1"	-	24'-8"	22'-10"	21'-9"	-
	NI-90	24'-5"	22'-6"	21'-6"	-	25'-1"	23'-2"	22'-2"	-

Joist depth	Joist series	Mid-span blocking with 1x4 inch strap On centre spacing				Mid-span blocking and 1/2 in. gypsum ceiling On centre spacing			
		12"	16"	19.2"	24"	12"	16"	19.2"	24"
9-1/2"	NI-20	16'-8"	15'-3"	14'-5"	-	16'-8"	15'-3"	14'-5"	-
	NI-40x	17'-11"	17'-0"	16'-1"	-	18'-5"	17'-1"	16'-1"	-
	NI-60	18'-2"	17'-1"	16'-4"	-	18'-8"	17'-4"	16'-4"	-
	NI-80	19'-5"	18'-0"	17'-5"	-	19'-10"	18'-5"	17'-8"	-
11-7/8"	NI-20	19'-7"	18'-2"	17'-3"	-	19'-11"	18'-3"	17'-3"	-
	NI-40x	21'-1"	19'-7"	18'-8"	-	21'-8"	20'-2"	19'-0"	-
	NI-60	21'-4"	19'-9"	18'-11"	-	21'-11"	20'-5"	19'-6"	-
	NI-80	22'-9"	21'-1"	20'-2"	-	23'-3"	21'-8"	20'-8"	-
	NI-90	23'-3"	21'-6"	20'-6"	-	23'-9"	22'-0"	21'-0"	-
14"	NI-40x	23'-8"	21'-11"	20'-11"	-	24'-4"	22'-8"	20'-11"	-
	NI-60	24'-0"	22'-3"	21'-3"	-	24'-8"	22'-11"	21'-11"	-
	NI-80	25'-7"	23'-9"	22'-7"	-	26'-2"	24'-4"	23'-3"	-
	NI-90	26'-1"	24'-2"	23'-0"	-	26'-8"	24'-9"	23'-7"	-
16"	NI-60	26'-5"	24'-6"	23'-5"	-	27'-2"	25'-3"	24'-2"	-
	NI-80	28'-2"	26'-1"	24'-10"	-	28'-10"	26'-9"	25'-6"	-
	NI-90	28'-8"	26'-6"	25'-3"	-	29'-3"	27'-2"	25'-11"	-

Notes:

1. The tabulated clear spans are based on CSA O86-14 and NBC 2015, and are applicable to residential floor construction meeting the above design criteria.
2. For multiple-span applications, the end spans shall be 40% or more of the adjacent span.
3. Minimum bearing length shall be 1-3/4 inch for end bearings, and 3-1/2 inches for intermediate bearings.
4. Bearing stiffeners are not required when I-joists are used in accordance with this table, except as required for hangers.
5. Nordic I-joists are listed in CCMC Evaluation Report 13032-R and APA Product Report PR-L274C.

Maximum Floor Spans – M4.1

Design Criteria

Spans:	Simple span
Loads:	Live load = 40 psf and dead load = 20 psf
Deflection limits:	L/480 under live load and L/240 under total load
Sheathing:	3/4 in. nailed-glued oriented strand board (OSB) sheathing

Maximum Floor Spans

Joist depth	Joist series	Bare On centre spacing				1/2 in. gypsum ceiling On centre spacing			
		12"	16"	19.2"	24"	12"	16"	19.2"	24"
9-1/2"	NI-20	15'-11"	15'-0"	14'-6"	13'-5"	16'-5"	15'-5"	14'-6"	13'-5"
	NI-40x	17'-0"	16'-0"	15'-5"	14'-10"	17'-5"	16'-5"	15'-10"	14'-11"
	NI-60	17'-2"	16'-2"	15'-7"	14'-11"	17'-7"	16'-7"	16'-0"	15'-4"
	NI-80	18'-3"	17'-1"	16'-5"	15'-9"	18'-8"	17'-5"	16'-9"	16'-1"
11-7/8"	NI-20	17'-11"	16'-11"	16'-3"	15'-8"	18'-7"	17'-5"	16'-10"	16'-1"
	NI-40x	19'-4"	17'-11"	17'-3"	16'-7"	19'-11"	18'-6"	17'-9"	17'-0"
	NI-60	19'-7"	18'-2"	17'-6"	16'-9"	20'-2"	18'-9"	17'-11"	17'-2"
	NI-80	21'-1"	19'-6"	18'-6"	17'-7"	21'-7"	20'-0"	19'-0"	18'-0"
	NI-90	21'-6"	19'-10"	18'-11"	17'-11"	22'-0"	20'-4"	19'-5"	18'-4"
14"	NI-40x	21'-5"	19'-11"	18'-11"	18'-0"	22'-1"	20'-7"	19'-7"	18'-7"
	NI-60	21'-10"	20'-2"	19'-3"	18'-3"	22'-6"	20'-10"	19'-11"	18'-10"
	NI-80	23'-5"	21'-7"	20'-7"	19'-5"	24'-0"	22'-3"	21'-2"	20'-0"
	NI-90	23'-10"	22'-1"	21'-0"	19'-10"	24'-5"	22'-7"	21'-6"	20'-4"
16"	NI-60	23'-9"	22'-0"	21'-0"	19'-10"	24'-6"	22'-9"	21'-8"	20'-7"
	NI-80	25'-6"	23'-7"	22'-5"	21'-2"	26'-2"	24'-3"	23'-1"	21'-10"
	NI-90	26'-0"	24'-0"	22'-10"	21'-6"	26'-7"	24'-8"	23'-5"	22'-2"

Joist depth	Joist series	Mid-span blocking with 1x4 inch strap On centre spacing				Mid-span blocking and 1/2 in. gypsum ceiling On centre spacing			
		12"	16"	19.2"	24"	12"	16"	19.2"	24"
9-1/2"	NI-20	16'-10"	15'-5"	14'-6"	13'-5"	16'-10"	15'-5"	14'-6"	13'-5"
	NI-40x	18'-8"	17'-2"	16'-3"	14'-11"	18'-10"	17'-2"	16'-3"	14'-11"
	NI-60	18'-11"	17'-6"	16'-6"	15'-5"	19'-2"	17'-6"	16'-6"	15'-5"
	NI-80	20'-3"	18'-10"	17'-11"	16'-10"	20'-8"	19'-3"	18'-2"	16'-10"
11-7/8"	NI-20	20'-1"	18'-5"	17'-5"	16'-1"	20'-1"	18'-5"	17'-5"	16'-1"
	NI-40x	21'-10"	20'-4"	19'-0"	17'-0"	22'-5"	20'-6"	19'-0"	17'-0"
	NI-60	22'-1"	20'-7"	19'-8"	18'-4"	22'-8"	20'-10"	19'-8"	18'-4"
	NI-80	23'-8"	22'-0"	20'-11"	19'-10"	24'-1"	22'-6"	21'-6"	20'-0"
	NI-90	24'-1"	22'-5"	21'-4"	20'-2"	24'-7"	22'-11"	21'-10"	20'-7"
14"	NI-40x	24'-5"	22'-9"	20'-11"	18'-8"	25'-1"	22'-11"	20'-11"	18'-8"
	NI-60	24'-10"	23'-2"	22'-1"	20'-10"	25'-6"	23'-8"	22'-4"	20'-10"
	NI-80	26'-6"	24'-8"	23'-6"	22'-2"	27'-1"	25'-3"	24'-1"	22'-9"
	NI-90	27'-0"	25'-1"	23'-11"	22'-7"	27'-6"	25'-8"	24'-6"	23'-2"
16"	NI-60	27'-3"	25'-5"	24'-3"	22'-11"	28'-0"	26'-2"	24'-9"	23'-1"
	NI-80	29'-1"	27'-1"	25'-9"	24'-4"	29'-8"	27'-9"	26'-5"	25'-0"
	NI-90	29'-7"	27'-6"	26'-2"	24'-9"	30'-2"	28'-2"	26'-10"	25'-5"

Notes:

1. The tabulated clear spans are based on CSA O86-14 and NBC 2015, and are applicable to residential floor construction meeting the above design criteria.
2. For multiple-span applications, the end spans shall be 40% or more of the adjacent span.
3. Minimum bearing length shall be 1-3/4 inch for end bearings, and 3-1/2 inches for intermediate bearings.
4. Bearing stiffeners are not required when I-joists are used in accordance with this table, except as required for hangers.
5. Nordic I-joists are listed in CCMC Evaluation Report 13032-R and APA Product Report PR-L274C.

Maximum Floor Spans – M6.1

Design Criteria

Spans:	Simple span
Loads:	Live load = 40 psf and dead load = 20 psf
Deflection limits:	L/480 under live load and L/240 under total load
Sheathing:	5/8 in. nailed-glued Canadian softwood plywood

Maximum Floor Spans

Joist depth	Joist series	Bare On centre spacing				1/2 in. gypsum ceiling On centre spacing			
		12"	16"	19.2"	24"	12"	16"	19.2"	24"
9-1/2"	NI-20	14'-11"	14'-1"	13'-7"	-	15'-4"	14'-6"	14'-1"	-
	NI-40x	15'-11"	15'-0"	14'-6"	-	16'-4"	15'-5"	14'-11"	-
	NI-60	16'-1"	15'-2"	14'-8"	-	16'-6"	15'-7"	15'-1"	-
	NI-80	17'-1"	16'-1"	15'-6"	-	17'-5"	16'-5"	15'-10"	-
11-7/8"	NI-20	16'-9"	15'-10"	15'-4"	-	17'-4"	16'-4"	15'-10"	-
	NI-40x	17'-10"	16'-10"	16'-3"	-	18'-6"	17'-4"	16'-9"	-
	NI-60	18'-1"	17'-0"	16'-5"	-	18'-9"	17'-6"	16'-11"	-
	NI-80	19'-6"	18'-0"	17'-4"	-	20'-1"	18'-7"	17'-9"	-
	NI-90	19'-11"	18'-4"	17'-8"	-	20'-5"	18'-11"	18'-1"	-
14"	NI-40x	19'-10"	18'-4"	17'-8"	-	20'-6"	19'-1"	18'-3"	-
	NI-60	20'-2"	18'-8"	17'-11"	-	20'-10"	19'-4"	18'-6"	-
	NI-80	21'-8"	20'-0"	19'-1"	-	22'-4"	20'-8"	19'-9"	-
	NI-90	22'-1"	20'-5"	19'-6"	-	22'-9"	21'-0"	20'-1"	-
16"	NI-60	22'-0"	20'-4"	19'-6"	-	22'-9"	21'-1"	20'-2"	-
	NI-80	23'-7"	21'-10"	20'-10"	-	24'-4"	22'-6"	21'-6"	-
	NI-90	24'-1"	22'-2"	21'-2"	-	24'-9"	22'-11"	21'-10"	-

Joist depth	Joist series	Mid-span blocking with 1x4 inch strap On centre spacing				Mid-span blocking and 1/2 in. gypsum ceiling On centre spacing			
		12"	16"	19.2"	24"	12"	16"	19.2"	24"
9-1/2"	NI-20	16'-6"	15'-1"	14'-3"	-	16'-6"	15'-1"	14'-3"	-
	NI-40x	17'-9"	16'-10"	15'-11"	-	18'-2"	16'-11"	15'-11"	-
	NI-60	17'-11"	16'-11"	16'-2"	-	18'-5"	17'-2"	16'-2"	-
	NI-80	19'-3"	17'-10"	17'-3"	-	19'-8"	18'-3"	17'-7"	-
11-7/8"	NI-20	19'-4"	18'-0"	17'-1"	-	19'-9"	18'-1"	17'-1"	-
	NI-40x	20'-10"	19'-4"	18'-6"	-	21'-5"	19'-11"	19'-0"	-
	NI-60	21'-1"	19'-7"	18'-8"	-	21'-8"	20'-2"	19'-3"	-
	NI-80	22'-6"	20'-10"	19'-11"	-	23'-1"	21'-5"	20'-5"	-
	NI-90	23'-0"	21'-3"	20'-4"	-	23'-6"	21'-10"	20'-10"	-
14"	NI-40x	23'-5"	21'-8"	20'-9"	-	24'-0"	22'-5"	20'-11"	-
	NI-60	23'-9"	22'-0"	21'-0"	-	24'-5"	22'-8"	21'-8"	-
	NI-80	25'-4"	23'-6"	22'-5"	-	25'-11"	24'-1"	23'-0"	-
	NI-90	25'-10"	23'-11"	22'-9"	-	26'-5"	24'-6"	23'-4"	-
16"	NI-60	26'-2"	24'-3"	23'-2"	-	26'-11"	25'-0"	23'-11"	-
	NI-80	27'-11"	25'-10"	24'-7"	-	28'-7"	26'-6"	25'-3"	-
	NI-90	28'-5"	26'-3"	25'-0"	-	29'-0"	26'-11"	25'-8"	-

Notes:

1. The tabulated clear spans are based on CSA O86-14 and NBC 2015, and are applicable to residential floor construction meeting the above design criteria.
2. For multiple-span applications, the end spans shall be 40% or more of the adjacent span.
3. Minimum bearing length shall be 1-3/4 inch for end bearings, and 3-1/2 inches for intermediate bearings.
4. Bearing stiffeners are not required when I-joists are used in accordance with this table, except as required for hangers.
5. Nordic I-joists are listed in CCMC Evaluation Report 13032-R and APA Product Report PR-L274C.

Maximum Floor Spans – M7.1

Design Criteria

Spans:	Simple span
Loads:	Live load = 40 psf and dead load = 20 psf
Deflection limits:	L/480 under live load and L/240 under total load
Sheathing:	3/4 in. nailed-glued Canadian softwood plywood

Maximum Floor Spans

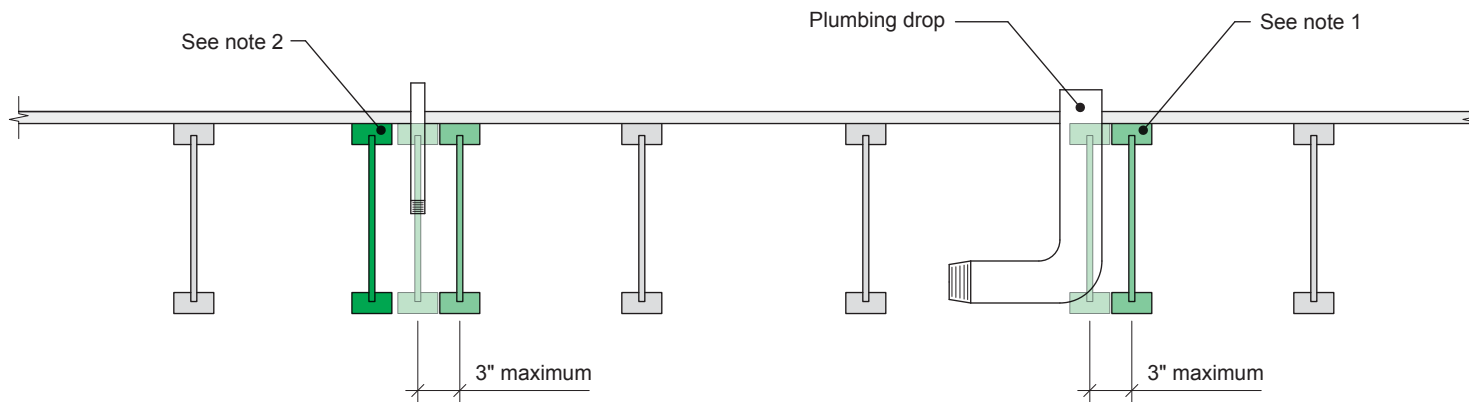
Joist depth	Joist series	Bare On centre spacing				1/2 in. gypsum ceiling On centre spacing			
		12"	16"	19.2"	24"	12"	16"	19.2"	24"
9-1/2"	NI-20	15'-10"	15'-0"	14'-5"	13'-5"	16'-4"	15'-5"	14'-6"	13'-5"
	NI-40x	16'-11"	15'-11"	15'-4"	14'-9"	17'-4"	16'-4"	15'-9"	14'-11"
	NI-60	17'-1"	16'-1"	15'-6"	14'-10"	17'-6"	16'-6"	15'-11"	15'-3"
	NI-80	18'-1"	17'-0"	16'-4"	15'-8"	18'-7"	17'-4"	16'-8"	16'-0"
11-7/8"	NI-20	17'-10"	16'-10"	16'-2"	15'-7"	18'-5"	17'-4"	16'-9"	16'-1"
	NI-40x	19'-3"	17'-10"	17'-2"	16'-6"	19'-10"	18'-5"	17'-8"	16'-11"
	NI-60	19'-6"	18'-1"	17'-4"	16'-8"	20'-1"	18'-8"	17'-10"	17'-1"
	NI-80	20'-11"	19'-4"	18'-5"	17'-7"	21'-5"	19'-10"	18'-11"	17'-11"
	NI-90	21'-4"	19'-9"	18'-9"	17'-10"	21'-10"	20'-3"	19'-3"	18'-3"
14"	NI-40x	21'-4"	19'-9"	18'-10"	17'-11"	22'-0"	20'-5"	19'-6"	18'-6"
	NI-60	21'-8"	20'-1"	19'-2"	18'-2"	22'-4"	20'-9"	19'-9"	18'-9"
	NI-80	23'-3"	21'-6"	20'-5"	19'-4"	23'-10"	22'-1"	21'-0"	19'-11"
	NI-90	23'-9"	21'-11"	20'-10"	19'-8"	24'-3"	22'-6"	21'-5"	20'-3"
16"	NI-60	23'-7"	21'-10"	20'-10"	19'-9"	24'-4"	22'-7"	21'-7"	20'-5"
	NI-80	25'-4"	23'-5"	22'-3"	21'-1"	26'-0"	24'-1"	22'-11"	21'-8"
	NI-90	25'-10"	23'-10"	22'-8"	21'-5"	26'-5"	24'-6"	23'-4"	22'-0"

Joist depth	Joist series	Mid-span blocking with 1x4 inch strap On centre spacing				Mid-span blocking and 1/2 in. gypsum ceiling On centre spacing			
		12"	16"	19.2"	24"	12"	16"	19.2"	24"
9-1/2"	NI-20	16'-10"	15'-5"	14'-6"	13'-5"	16'-10"	15'-5"	14'-6"	13'-5"
	NI-40x	18'-7"	17'-2"	16'-3"	14'-11"	18'-10"	17'-2"	16'-3"	14'-11"
	NI-60	18'-10"	17'-6"	16'-6"	15'-5"	19'-1"	17'-6"	16'-6"	15'-5"
	NI-80	20'-2"	18'-9"	17'-11"	16'-10"	20'-7"	19'-2"	18'-2"	16'-10"
11-7/8"	NI-20	20'-1"	18'-5"	17'-5"	16'-1"	20'-1"	18'-5"	17'-5"	16'-1"
	NI-40x	21'-9"	20'-3"	19'-0"	17'-0"	22'-4"	20'-5"	19'-0"	17'-0"
	NI-60	22'-0"	20'-6"	19'-7"	18'-4"	22'-7"	20'-10"	19'-8"	18'-4"
	NI-80	23'-6"	21'-10"	20'-10"	19'-9"	24'-0"	22'-5"	21'-4"	20'-0"
	NI-90	24'-0"	22'-4"	21'-3"	20'-1"	24'-6"	22'-10"	21'-9"	20'-7"
14"	NI-40x	24'-4"	22'-8"	20'-11"	18'-8"	25'-0"	22'-11"	20'-11"	18'-8"
	NI-60	24'-9"	23'-0"	22'-0"	20'-9"	25'-5"	23'-8"	22'-4"	20'-10"
	NI-80	26'-5"	24'-6"	23'-4"	22'-1"	27'-0"	25'-2"	24'-0"	22'-8"
	NI-90	26'-11"	25'-0"	23'-10"	22'-6"	27'-5"	25'-7"	24'-5"	23'-1"
16"	NI-60	27'-2"	25'-4"	24'-2"	22'-10"	27'-11"	26'-1"	24'-9"	23'-1"
	NI-80	29'-0"	26'-11"	25'-8"	24'-3"	29'-7"	27'-7"	26'-4"	24'-11"
	NI-90	29'-6"	27'-5"	26'-1"	24'-8"	30'-1"	28'-1"	26'-9"	25'-4"

Notes:

1. The tabulated clear spans are based on CSA O86-14 and NBC 2015, and are applicable to residential floor construction meeting the above design criteria.
2. For multiple-span applications, the end spans shall be 40% or more of the adjacent span.
3. Minimum bearing length shall be 1-3/4 inch for end bearings, and 3-1/2 inches for intermediate bearings.
4. Bearing stiffeners are not required when I-joists are used in accordance with this table, except as required for hangers.
5. Nordic I-joists are listed in CCMC Evaluation Report 13032-R and APA Product Report PR-L274C.

7c

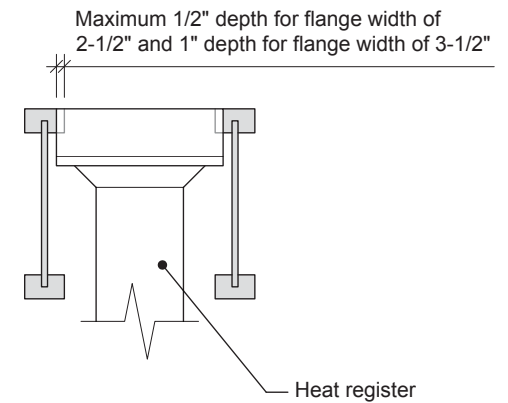
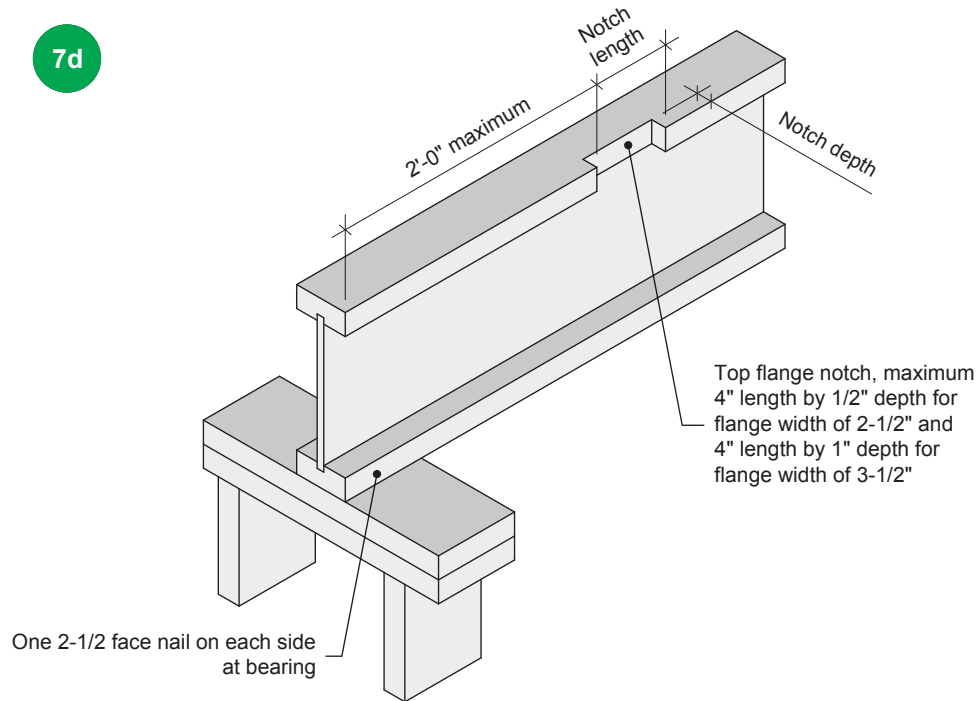


Notes:

1. To prevent interference with plumbing, a joist may be shifted up to 3 inches if the edge of the floor panel is supported and the span rating is not exceeded.
2. In all other cases, an additional joist is required.

All nails shown in the details are assumed to be common nails unless otherwise noted. Nails shall have a diameter not less than 0.128 inch for 2-1/2-inch nails, or 0.144 inch for 3-inch nails. Individual components not shown to scale for clarity.

7d



Notes:

1. Blocking required at bearing for lateral support, not shown for clarity.
2. The maximum dimensions for a notch on the side of the top flange are 4-inch length by 1/2-inch depth for flange width of 2-1/2 inches, and 4-inch length by 1-inch depth for flange width of 3-1/2 inches.
3. This detail applies to simple-span joists and multiple-span joists where the notch is located at the end half-span.
4. For other applications, contact Nordic Structures.

All nails shown in the details are assumed to be common nails unless otherwise noted. Nails shall have a diameter not less than 0.128 inch for 2-1/2-inch nails, or 0.144 inch for 3-inch nails. Individual components not shown to scale for clarity.