

Engineering Notes: EWP-Floors

CORPORATION OF THE CITY OF OSHAWA
TRUE COPY
OF PERMIT PLANS
Nov 16 2023

PLEASE READ ALL NOTES BEFORE INSTALLATION OF THE COMPONENT

RESPONSIBILITIES

THE RESPONSIBILITY OF THE UNDERSIGNED ENGINEER IS ONLY LIMITED TO THE CALCULATION OF THIS BUILDING COMPONENT FOR THE LOADS AND CONDITIONS SHOWN ON THIS DRAWING.

THE RESPONSIBILITY OF THE UNDERSIGNED IS LIMITED TO THE VERIFICATION OF THE STRUCTURAL CAPACITY OF THE FLOOR JOISTS AND LVL BEAMS BASED ON PLACEMENT AS SHOWN ON THE LAYOUT. THE LOADS APPLIED ARE LIMITED TO THE GRAVITY EFFECTS OF THE SPECIFIED LOADS. THE STRUCTURAL INTEGRITY OF THE BUILDING AND THE EFFECT OF WIND, UPLIFT, SEISMIC, LATERAL OR OTHER FORCES, CALCULATION OF ADEQUATE SUPPORT AND ANCHORAGE OF COMPONENTS, AS WELL AS THE DIMENSIONS AND DESIGN LOADS USED TO CALCULATE COMPONENTS ARE THE RESPONSIBILITY OF THE OVERALL BUILDING DESIGNER. FLOOR JOISTS AND OSB RIM BOARD ARE DESIGNED TO CARRY UNIFORMLY DISTRIBUTED LOADS ONLY. POINT LOADS SHOULD BE TRANSFERRED THROUGH THE FLOOR CAVITY WITH TRANSFER BLOCKS. STRUCTURAL ELEMENTS SUCH AS WALLS, POSTS, CONNECTORS, AND TRANSFER BLOCKS ARE THE RESPONSIBILITY OF THE OVERALL BUILDING DESIGNER.

THE UNDERSIGNED ENGINEER DISCLAIMS ANY RESPONSIBILITY FOR DAMAGES AS A RESULT OF BEING FURNISHED FAULTY OR INCORRECT INFORMATION, SPECIFICATIONS AND/OR DESIGNS.

COMPONENT DESIGN INFORMATION

1. THIS BUILDING COMPONENT IS CERTIFIED AS AN INDIVIDUAL COMPONENT FOR THE LOADS AND CONDITIONS SHOWN ON THE CALCULATION PAGE BASED ON INFORMATION PROVIDED BY KOTT DESIGN.
2. THE BUILDING COMPONENT USED IN CONSTRUCTION MUST BE THE SAME AS INDICATED ON THE DRAWINGS.
3. UNLESS NOTED OTHERWISE ON THE LAYOUT OR BEAM CALCULATION SHEET, MEMBERS CONSISTING OF MULTIPLE PLIES MUST BE CONNECTED AS PER THE DOCUMENT "MULTIPLE MEMBER CONNECTION DETAILS" SHOWN ON PAGE 2 OF THIS DOCUMENT.
4. PASS-THRU TRANSFER BLOCK FRAMING IS REQUIRED AT ALL POINT LOADS OVER BEARINGS.
5. IT IS ASSUMED THAT EACH LVL BEAM WHERE NOT SEATED IN A HANGER IS ATTACHED USING (4) FOUR 3-1/4" COMMON SPIRAL NAILS FOR UP TO 5.5" LONG BEARINGS AND USING (6) SIX 3-1/4" COMMON SPIRAL NAILS FOR BEARINGS EQUAL TO OR LONGER THAN 5.5", UNLESS INDICATED OTHERWISE.

CODE

THIS BUILDING COMPONENT IS DESIGNED IN ACCORDANCE WITH THE NATIONAL BUILDING CODE OF CANADA, THE ONTARIO BUILDING CODE, CCMC AND CANADIAN STANDARDS ASSOCIATION GUIDELINES.

HANDLING AND INSTALLATION

1. DO NOT DRILL ANY HOLE, CUT OR NOTCH A CERTIFIED BUILDING COMPONENT WITHOUT A WRITTEN PRE-AUTHORIZATION.
2. INSTALLATION AND ASSEMBLY OF FLOOR JOISTS AND LVL BEAMS IS TO BE CARRIED OUT IN ACCORDANCE WITH THE CURRENT EDITION OF THE MANUFACTURER'S LITERATURE.

Nov 16 2023

PER: 

CHIEF BUILDING OFFICIAL

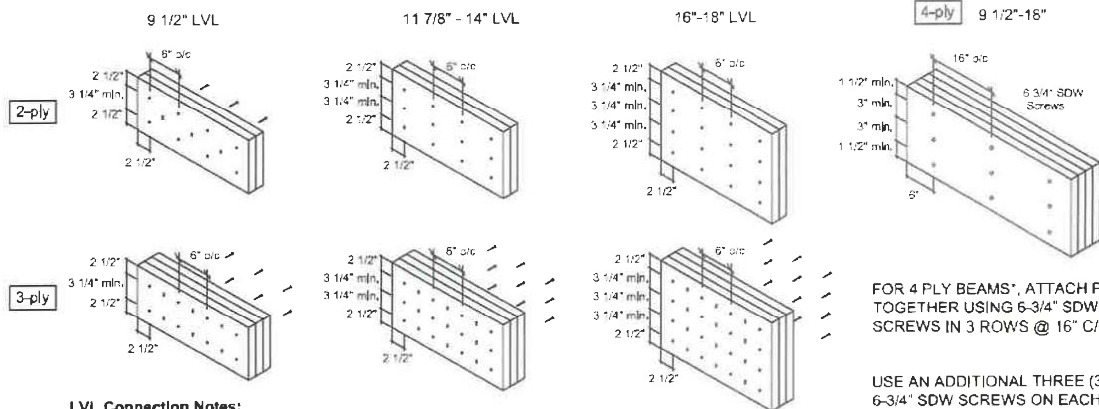
ENG-IM0723-161-KTF-GREENPARK-ZADORRA ESTATES-CAROL 12-3

Page 2 of 42

MULTIPLE MEMBER CONNECTIONS FOR BEAMS SHOWN ON KOTT LAYOUTS



MULTIPLE MEMBER CONNECTIONS FOR UNIFORMLY DISTRIBUTED TOP & SIDE LOADED LVL BEAMS SHOWN ON KOTT LAYOUTS

**LVL Connection Notes:**

- LVL ply width is 1-3/4"
- Nails to be 3 1/2" common wire nails.
- Nails to be located 2 1/2" min. from the top and bottom of the member. Start all nails 2 1/2" min. from ends.
- Minimum 3 1/4" spacing between rows.
- Number of rows and spacing as per details shown, unless noted otherwise.
- "X" represents nail driven from the opposite side.
- Head of all specified screws must be on the loaded side.

FOR 4 PLY BEAMS*, ATTACH PLIES TOGETHER USING 6-3/4" SDW SCREWS IN 3 ROWS @ 16" C/C.

USE AN ADDITIONAL THREE (3) 6-3/4" SDW SCREWS ON EACH SIDE (OF EACH FACE) AT POINT LOAD LOCATIONS @ 1/2 SPACING, WHERE APPLICABLE.

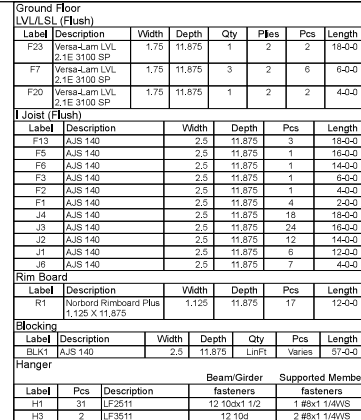
*UNLESS NOTED OTHERWISE ON LAYOUT OR CALCULATION SHEET OF BEAM IN THE FLOOR PACKAGE

FOR MULTIPLE MEMBER CONNECTION OF BOISE ALLJOISTS REFER TO THE BOISE CASCADE INSTALLATION GUIDE

Installation Guide

(Open your phone's camera and hover over this QR code to access it)

Last Revised January 13, 2023



JOB INFORMATION
Builder GREENPARK
Project
Shipping ZADORRA ESTATES OSHAWA, ON
Sales Rep RALPH MIRIGELLO
Designer W C
Plotted May 23, 2023
Layout Name CAROL, 12-3 STD
Job Path J:\CUSTOMERS\GREENPARK\ZADORRA ESTATE MODELS\CAROL, 12\CAROL, 12-3\IF-CAROL, 12-3 CAROL, 12-3 STD.mc

Blocking						
Label	Description	Width	Depth	Qty	Pcs	Length
BLK1	AJS 140	2.5	11.875	LinFit	Varies	57'-0"
Hanger						
			Beam/Girder	Supported Member		
Label	Pcs	Description	fasteners	fasteners		
H1	31	LF2511	12 10dx1 1/2	1 #8x1 1/4WS		
H3	2	LF3511	12 10d	2 #8x1 1/4WS		

DESIGN CRITERIA	
Ground Floor	
Design Method	LSD (Canada)
Building Code	NBCC 2015 CBC 2012(2020 Update)
Floor Loads	
Live	40
Dead	15
Deflection Joist	
LL Span /L	480
TL Span /L	240
Deflection Flush Girder	
LL Span /L	360
TL Span /L	240
Deflection Dropped Girder	
LL Span /L	360
TL Span /L	240
Deflection Header	
LL Span /L	360
TL Span /L	240
Decking	
Decking	OSB
Thickness	3/4"
Fasterener	Nailed & Glued

CCMC References
Boise - 12472-R, 12787-R
LP - 12412-R, Roseburg - 13310-R
Forex - 14056-R


Kott Inc.
3228 Moodie Dr, Ottawa
14 Anderson Blvd, Uxbridge
Ontario
613-838-2775 /
905-642-4400

1. All Hacking to be cut from 12" joints
2. 2 x 4's & Lengths to be cut from 6' Length, 6' lengths to be cut from 12' Length
3. 2 x 6's & Lengths to be laterally supported
4. Packing of Steel beams and attachment by others
5. Shores and water: drawing floor locations are approximate only; consult architectural drawing for exact locations
6. Beams specified as "18" are dropped and supplied by others
7. Install 2x4 blocking @ 24" on under parallel non-loadbearing walls
8. Load transfer blocks to be installed under all point loads
9. Refer to Multiple Member Connection Detail for ply to ply nailing or bolting requirements
10. Hangers and Fasteners to be installed as per manufacturer
11. Framing shown on this layout may deviate from architectural drawings. Arch Engr review and approve the deviation prior to construction.
12. Multi ply beams with side loading to have all fasteners installed with the head on the side of the applied load
13. Confirmation of adequate support & anchorage of components is the responsibility of the building designer; suggested uplift connectors are as shown
14. Where beam hangers on side of 3-ply member, it is recommended that the replacement of the hanger be made on the opposite side of the hanger attachment also installed on opposite side of the 3-ply member

Installation Guide



(Open your phone's camera and hover over this QR code to access it)

 Hatch Area represents where additional load has been applied. (e.g. 5 psf for ceramic tile)

Legend

WS Web Stiffener
 -WS In Hanger Label Denotes Web Stiffener
 PS Point Load Support
 Load from Above
 Wall
 Wall Opening
 Norbord Rimboard Plus 1.125 X 11.875
 AJS 140 11.875
 Hanger 140 11.875

Ground Floor LVL/SL (Flush)							JOB INFORMATION			
Label	Description	Width	Depth	Qty	Pcs	Length	Builder GREENPARK			
F29	Versa-Lam LVL 2.1E 3100 SP	1.75	11.875	1	2	19'-0"	Project			
F7	Versa-Lam LVL 2.1E 3100 SP	1.75	11.875	3	2	6'-0"	Shipping ZADORRA ESTATES COWANVA, ON			
F20	Versa-Lam LVL 2.1E 3100 SP	1.75	11.875	1	2	2'-0"	Sales Rep RALPH MIRGELLO			
Joist (Flush)							Designer W.C			
Label	Description	Width	Depth	Pcs	Length	Plotted May 23, 2023				
F13	AJS 140	2.5	11.875	3	18'-0"	Layout Name CAROL 12-3 WUC				
F5	AJS 140	2.5	11.875	1	16'-0"	Job Path S:\CUSTOMERS\GREENPARK\ZADORRA ESTATE MICHEL SICAROL - 10-CAROL - 12-3 WALKUP CONDITION\CAROL 12-3 WUC.dwg				
F3	AJS 140	2.5	11.875	1	14'-0"	Design Criteria				
F2	AJS 140	2.5	11.875	1	4'-0"	Ground Floor				
F1	AJS 140	2.5	11.875	4	2'-0"	Design Method LSD (Canada)				
J4	AJS 140	2.5	11.875	18	18'-0"	Building Code NEBC 2015 CBC 2012(2020 update)				
J3	AJS 140	2.5	11.875	24	16'-0"	Floor Loads				
J2	AJS 140	2.5	11.875	12	14'-0"	Live 40				
J1	AJS 140	2.5	11.875	6	12'-0"	Dead 15				
J6	AJS 140	2.5	11.875	7	4'-0"	Deflection Joist				
Rim Board							LL Span / L 480			
Label	Description	Width	Depth	Pcs	Length	Deflection Flush Girder				
R1	Norbord Rimboard Plus 1.125 X 11.875	1.125	11.875	17	12'-0"	LL Span / L 360				
Blocking							Deflection Dropped Girder			
Label	Description	Width	Depth	Qty	Pcs	Length	LL Span / L 240			
BLK1	AJS 140	2.5	11.875	LinFt	Varies	14W5	Deflection Header			
Hanger							LL Span / L 360			
Label	Pcs	Description	fasteners	fasteners	Decking					
H1	31	LF2511	12 10dX1 1/2	1 #6x1 1/4WS	Thickness 3/4"					
H3	2	LF3511	12 10d	2 #6x1 1/4WS	Fastener Nailed & Glued					

Diagram showing the layout of joists, blocking, and hangers. It includes labels for R1, F1, F2, F3, F5, F7, F13, J1, J2, J3, J4, J6, and BLK1. Dimensions are provided for various components.

All blocking to be cut from 12' joists

2' x 4' Lengths to be cut from 8' Length, 6' Lengths to be cut from 12' Length

Ends of joists to be laterally supported

Packing of Steel beams and attachment by others

Shower and water down (gutter) locations are approximate only, consult architectural drawing for exact locations

Beams identified as "B" are dropped and supplied by others

Install 2x4 blocking @ 24" o/c under parallel non-loadbearing walls

Load transfer blocks to be installed under all point loads

Refer to Multiple Member Connection Detail for joist to ply nailing or bolting requirements

Hangers and Fasteners to be installed as per manufacturer

Framing shown on this layout may deviate from architectural drawings, Arch / Eng to review and approve the deviation prior to construction.

Multi ply beams with side loading to have all fasteners installed with the head on the side of the applied load

Confirmation of adequate support & anchorage of components is the responsibility of the building designer; suggested uplift connectors are as shown

Where beam hangers on side of 3-ply member, it is recommended that the toe hanger (not quantity) size of nails required for the hanger attachment also be installed on opposite side of the 3-ply member

Legend

WS Web Stiffener

WS In-hanger Label Denotes Web Stiffener

PS Point Load Support

PS Load from Above

Wall


Wall Opening

Norbord Rimboard Plus 1.125 X 11.875

AJS 140 11.875

Versa-Lam LVL 2.1E 3100 SP 1.75

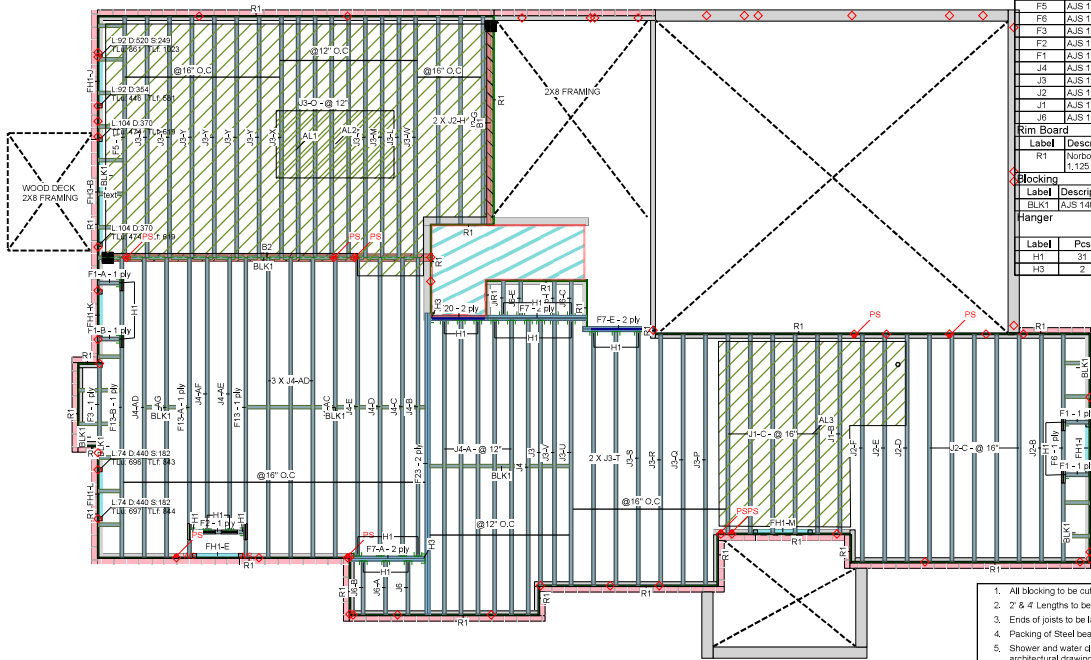


 Hatch Area represents where additional load has been applied. (e.g. 5 psf for ceramic tile)

Ground Floor

ENG-IM0723-181-KTF-GREENPARK-ZADORRA ESTATES-CAROL 12-3

Page 5 of 49



Ground Floor LVL/LSL (Flush)							
Label	Description	Width	Depth	Qty	Pieces	Pcs	Length
F23	Versa-Lam LVL 2.1E 3100 SP	1.75	11.875	1	2	2	18-0-0
F7	Versa-Lam LVL 2.1E 3100 SP	1.75	11.875	3	2	6	6-0-0
F20	Versa-Lam LVL 2.1E 3100 SP	1.75	11.875	1	2	2	4-0-0
Joist (Flush)							
Label	Description	Width	Depth	Qty	Pieces	Pcs	Length
F13	AJS 140	2.5	11.875	3	1	1	18-0-0
F5	AJS 140	2.5	11.875	1	1	1	18-0-0
F6	AJS 140	2.5	11.875	1	1	1	14-0-0
F3	AJS 140	2.5	11.875	1	1	1	6-0-0
F2	AJS 140	2.5	11.875	1	1	1	4-0-0
F1	AJS 140	2.5	11.875	4	1	4	2-0-0
J4	AJS 140	2.5	11.875	18	1	18	18-0-0
J3	AJS 140	2.5	11.875	24	1	24	16-0-0
J2	AJS 140	2.5	11.875	12	1	12	14-0-0
J1	AJS 140	2.5	11.875	6	1	6	12-0-0
J8	AJS 140	2.5	11.875	7	1	7	4-0-0
Rim Board							
Label	Description	Width	Depth	Qty	Pieces	Pcs	Length
R1	Norbord Rimboard Plus 1.125 X 11.875	1.125	11.875	17	1	17	12-0-0
Blocking							
Label	Description	Width	Depth	Qty	Pieces	Pcs	Length
BLK1	AJS 140	2.5	11.875	1	1	1	57-0-0
Hanger							
Label	Pcs	Description	fasteners	fasteners			
H1	31	LF2511	12 10x3 1/2	1 #8x1 1/4WS			
H3	2	LF3511	12 10d	2 #8x1 1/4WS			

JOB INFORMATION	
Builder	GREENPARK
Project	ZADORRA ESTATES OSHAWA, ON
Shipping	
Sales Rep	RALPH MIRIGELLO
Designer	
Plotted	May 23, 2023
Layout Name	CAROL 12-3 WOC
Job Path	8:\CUSTOMER\GREENPARK\ZADORRA ESTATES MODELS\CAROL 12-3\CAROL 12-3\CAROL 12-3 WALK-OUT CONDITION\CAROL 12-3 WOC.M

DESIGN CRITERIA	
Design Method	LSD (Canada)
Bulking Code	NBCC 2015 CBC (2012/2020 Update)
Floor	
Live	40
Dead	15
Deflection Joist	
LL Span /	480
TL Span /	240
Deflection Flush Girder	
LL Span /	360
TL Span /	240
Deflection Dropped Girder	
LL Span /	360
TL Span /	240
Deflection Header	
LL Span /	360
TL Span /	240
Decking	
Decking	OSB
Thickness	3/4"
Fastener	Nailed & Glued

CCMC References	
Boise - 12472-R	12787-R
LP - 12412-R	Roseburg - 13310-R
Forex - 14056-R	
Kott Inc.	
3228 Moode Dr, Ottawa	
14 Anderson Blvd, Uxbridge	
Ontario	
613-838-2775 /	
905-642-4400	



Installation Guide



(Open your phone's camera and
hover over this QR code to access it)

Hatched Area represents where
additional load has been applied.
(e.g. 5 psf for ceramic tile)

- All blocking to be cut from 12" joists
- 2' & 4' Lengths to be cut from 8' Length, 6' lengths to be cut from 12' Length
- Ends of joists to be laterally supported
- Packing of Steel beams and attachment by others
- Shower and water closet flange locations are approximate only; consult architectural drawing for exact locations
- Beams identified as "B" are dropped and supplied by others
- Install 2x4 blocking @ 24" o/c under parallel non-loadbearing walls
- Load transfer blocks to be installed under all point loads
- Refer to Multiple Member Connection Detail for ply to ply nailing or bolting requirements
- Hangers and Fasteners to be installed as per manufacturer
- Framing shown on this layout may deviate from architectural drawings. Arch / Eng to review and approve the deviation prior to construction.
- Multi ply beams with side loading to have all fasteners installed with the head on the side of the applied load.
- Confirmation of adequate support & anchorage of components is the responsibility of the building designer; suggested uplift connectors are as shown.
- Where beam hangs on side of 3-ply member, it is recommended that the member's joint quantity and size of nails required for the hanger attachment also be installed on opposite side of the 3-ply member

Legend

WS	Web Stiffener
WS	In Hanger Label Denotes Web Stiffener
PS	Point Load Support
PS	Load from Above
W	Wall
W	Wall Opening
Norbord Rimboard Plus 1.125 X 11.875	
AJS 140 11.875	
Versa-Lam LVL 2.1E 3100 SP 1.75 X	

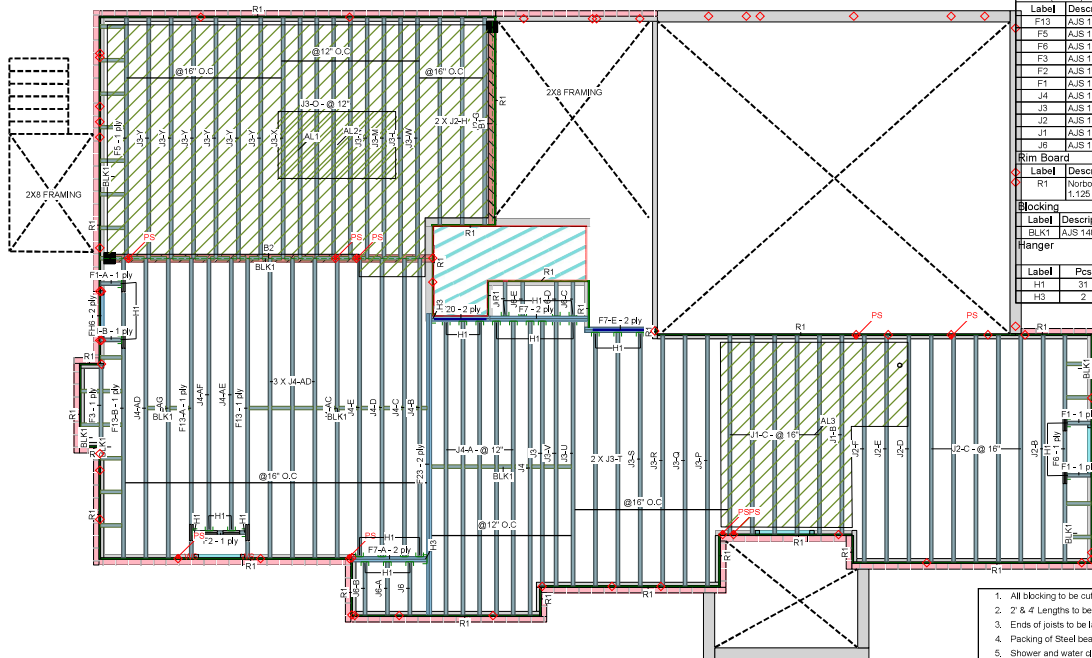
Nov 16 2023

PER: 
CHIEF BUILDING OFFICIAL

ENG-IM723-181-KTF-GREENPARK-ZADORRA ESTATES-CAROL 12-3

Page 25 of 49

Ground Floor

Ground Floor
LVL/LSL (Flush)

Label	Description	Width	Depth	Qty	Piles	Pcs	Length
F23	Versa-Lam LVL 2.1E 3100 SP	1.75	11.875	1	2	2	18-0-0
F7	Versa-Lam LVL 2.1E 3100 SP	1.75	11.875	3	2	6	6-0-0
F20	Versa-Lam LVL 2.1E 3100 SP	1.75	11.875	1	2	2	4-0-0
FH8	Versa-Lam LVL 2.1E 3100 SP	1.75	11.875	1	2	2	4-0-0

Joist (Flush)

Label	Description	Width	Depth	Pcs	Length
F13	AJS 140	2.5	11.875	3	18-0-0
F5	AJS 140	2.5	11.875	1	16-0-0
F8	AJS 140	2.5	11.875	1	14-0-0
F3	AJS 140	2.5	11.875	1	8-0-0
F2	AJS 140	2.5	11.875	1	4-0-0
F1	AJS 140	2.5	11.875	4	2-0-0
J4	AJS 140	2.5	11.875	16	18-0-0
J3	AJS 140	2.5	11.875	24	16-0-0
J2	AJS 140	2.5	11.875	12	14-0-0
J1	AJS 140	2.5	11.875	6	12-0-0
J8	AJS 140	2.5	11.875	7	4-0-0

Rim Board

Label	Description	Width	Depth	Pcs	Length
R1	Norbord Rimboard Plus 1.125 X 11.875	1.125	11.875	17	12-0-0

Blocking

Label	Description	Width	Depth	Qty	Pcs	Length
BLK1	AJS 140	2.5	11.875	1	Varies	57-0-0

Hanger

Label	Pcs	Description	Beam/Girder fasteners	Supported Member fasteners
H1	31	LF2511	12 10x1 1/2	1 #6x1 1/4WS
H3	2	LF3511	12 10d	2 #6x1 1/4WS

JOB INFORMATION

Builder
GREENPARK

Project
ZADORRA ESTATES
OSHAWA, ON

Shipping
ZADORRA ESTATES
OSHAWA, ON

Sales Rep
RALPH MIRIGELLO

Designer

Plotted
May 23, 2023

Layout Name
CAROL 12-3 DC

Job Path
S:\CUSTOMER\GREENPARK\ZADORRA ESTATES
MODELS\CAROL 12-3\CAROL 12-3-DC-CAROL 12-3
DECK CONDITION\CAROL 12-3 DC.dwg

DESIGN CRITERIA

Ground Floor

Design Method LSD (Canada)

Bulking Code NBCC 2015
CBC 2012(2020 Update)

Floor

Loads

Live 40

Dead 15

Deflection Joist

LL Span / 480

TL Span / 240

Deflection Flush Girder

LL Span / 360

TL Span / 240

Deflection Dropped Girder

LL Span / 360

TL Span / 240

Deflection Header

LL Span / 360

TL Span / 240

Decking

Decking OSB

Thickness 3/4"

Fastener Nailed & Glued

CCMC References

Boise - 12472-R, 12787-R

LP - 12412-R, Roseburg - 13310-R

Forex - 14056-R

Kott Inc.

3228 Moode Dr, Ottawa

14 Anderson Blvd, Uxbridge

Ontario

613-838-2775 / 905-642-4400



Installation Guide

(Open your phone's camera and
hover over this QR code to access it)

Hatched Area represents where
additional load has been applied.
(e.g. 5 psf for ceramic tile)

- All blocking to be cut from 12" joists
- 2' & 4' Lengths to be cut from 8' Length, 6' lengths to be cut from 12' Length
- Ends of joists to be laterally supported
- Packing of Steel beams and attachment by others
- Shower and water closet flange locations are approximate only; consult architectural drawing for exact locations
- Beams identified as "B" are dropped and supplied by others
- Install 2x4 blocking @ 24" o/c under parallel non-loadbearing walls
- Load transfer blocks to be installed under all point loads
- Refer to Multiple Member Connection Detail for ply to ply nailing or bolting requirements
- Hangers and Fasteners to be installed as per manufacturer
- Framing shown on this layout may deviate from architectural drawings. Arch / Eng to review and approve the deviation prior to construction.
- Multi ply beams with side loading to have all fasteners installed with the head on the side of the applied load
- Confirmation of adequate support & anchorage of components is the responsibility of the building designer; suggested uplift connectors are as shown
- Where beam hangs on side of 3-ply member, it is recommended that the beam's hanger quantity and size of nails required for the hanger attachment also be installed on opposite side of the 3-ply member

Legend

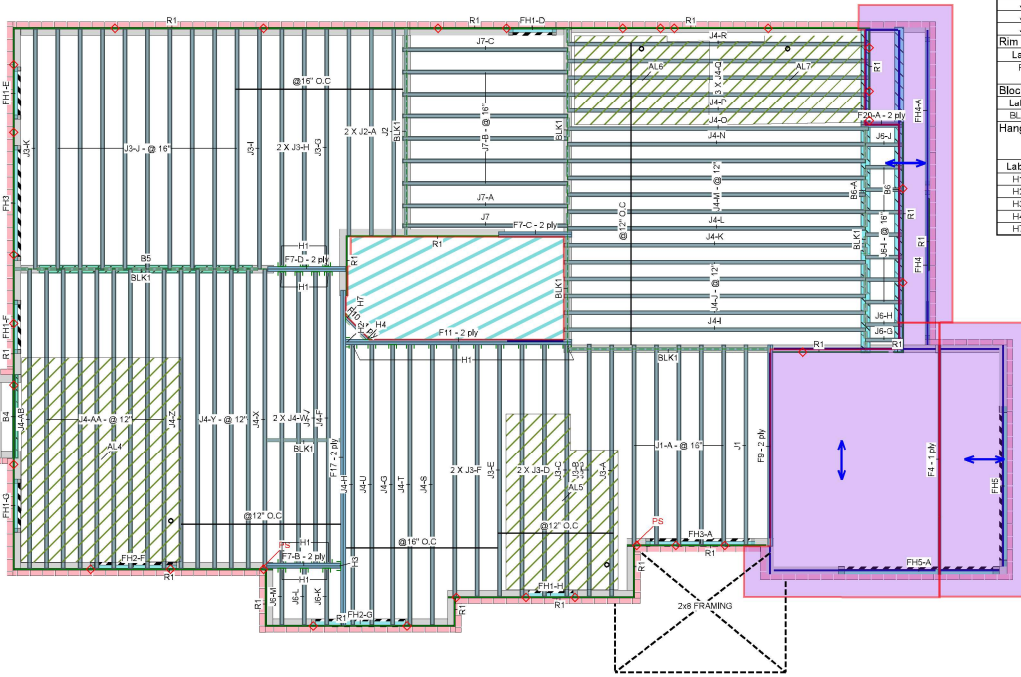
WS	Web Stiffener
WS	In Hanger Label Denotes Web Stiffener
PS	Point Load Support
PS	Load from Above
W	Wall
W	Wall Opening
Norbord Rimboard Plus 1.125 X 11.875	
AJS 140 11.875	
Versa-Lam LVL 2.1E 3100 SP 1.75 X	

Second Floor

1. All blocking to be cut from 12' joists.
2. 2' & 4' Lengths to be cut from 8' Length, 6' lengths to be cut from 12' Length
3. Ends of joists to be laterally supported
4. Packing of Steel beams and attachment by others
5. Shower and water closet flange locations are approximate only; consult architectural drawing for exact locations
6. Beams identified as 'B' are dropped and supplied by others
7. Install 2x4 blocking @ 24" o/c under parallel non-loadbearing walls
8. Load transfer blocks to be installed under all point loads
9. Refer to Multiple Member Connection Detail for ply to ply nailing or bolting requirements
10. Hangers and Fasteners to be installed as per manufacturer
11. Framing shown on this layout may deviate from architectural drawings. Arch / Eng to review and approve the deviation prior to construction.
12. Multi ply beams with side loading to have all fasteners installed with the head on the side of the applied load
13. Confirmation of adequate support & anchorage of components is the responsibility of the building designer; suggested uplift connectors are as shown
14. Where beam hangs on side of 3-ply member, it is recommended that the equivalent quantity and size of nails required for the hanger attachment also be installed on opposite side of the 3-ply member

Second Floor						
LVL/SL (Flush)						
Label	Description	Width	Depth	Qty	Plies	Pcs Length
F17	Versa-Lam LVL 2.1E 3100 SP	1.75	11.875	1	2	20'-0"
F11	Versa-Lam LVL 2.1E 3100 SP	1.75	11.875	1	2	14'-0"
F9	Versa-Lam LVL 2.1E 3100 SP	1.75	11.875	1	2	12'-0"
F7	Versa-Lam LVL 2.1E 3100 SP	1.75	11.875	3	2	6'-0"
F20	Versa-Lam LVL 2.1E 3100 SP	1.75	11.875	1	2	4'-0"
F10	Versa-Lam LVL 2.1E 3100 SP	1.75	11.875			1 4'-0"
Joist (Flush)						
Label	Description	Width	Depth	Pcs	Length	
J4	AJS 140	2.5	11.875	42	16'-0"	
J3	AJS 140	2.5	11.875	23	16'-0"	
J2	AJS 140	2.5	11.875	3	14'-0"	
J1	AJS 140	2.5	11.875	6	12'-0"	
J7	AJS 140	2.5	11.875	9	10'-0"	
J6	AJS 140	2.5	11.875	13	4'-0"	
Rim Board						
Label	Description	Width	Depth	Pcs	Length	
R1	Norbord Rimboard Plus 1.125 X 11.875	1.125	11.875	15	12'-0"	
Blocking						
Label	Description	Width	Depth	Qty	Pcs	Length
BLK1	AJS 140	2.5	11.875	Varies	Varies	54'-0"
Hanger						
Beam/Girder						
Label	Pcs	Description	Skew	fasteners	Supported Member	
H1	25	LF2511		12 10d	1 #8x1 1/4WS	
H2	1	H4US410		30 16d	10 16d	
H3	1	LF3511		12 10d	2 #8x1 1/4WS	
H4	1	SUL1.81/8 (Min)	Right	12 16d	2 10dx1 1/2	
H7	1	SUL1.81/8 (Min)	Left	12 16d	2 10dx1 1/2	

JOB INFORMATION	
Builder	GREENPARK
Project	
Shipping	ZADORRA ESTATES OSHAWA, ON
Sales Rep	RALPH MIRIGELLO
Designer	W.C.
Plotted	May 23, 2023
Layout Name	CAROL 12-3 ALL OPTIONS
Job Path	S:\CUSTOMER\GREENPARK\ZADORRA ESTATES MODEL\B\CAROL 12\CAROL 12-3P-CAROL 12-3 WALK-OUT CONDITION\CAROL 12-3 WOC.mtl
DESIGN CRITERIA	
Second Floor	LSD (Canada)
Design Method	NSCC 2015
Building Code	OSBC 2012(2020 Update)
Floor Loads	
Live	40
Dead	15
Deflection Joist	
LL Span /	480
TL Span /	240
Deflection Flush Girder	
LL Span /	360
TL Span /	240
Deflection Dropped Girder	
LL Span /	360
TL Span /	240
Deflection Header	
LL Span /	360
TL Span /	240
Decking	
Decking	OSB
Thickness	5/8"
Fastener	Nailed & Glued
CCMC References	
Base	12x12-R, 12x16-R
LP	12x12-R, Roseburg - 13310-R
Forex	1405S-R
Kott Inc.	3228 Moodie Dr, Ottawa 14 Anderson Blvd, Uxbridge Ontario
#13-838-2775 / 905-642-4400	



(Open your phone's camera and
hover over this QR code to access it)

Hatch Area represents where
additional load has been applied.
(e.g. 5 psf for ceramic tile)

Legend	
WS	Web Stiffener
WS	In Hanger Label Denotes Web Stiffener
PS	Point Load Support
Load from Above	
Wall	
Wall Opening	
Norbord Rimboard Plus 1.125 X 11.875	
AJS 140 11.875	
Versa-Lam LVL 2.1E 3100 SP 1.75 X	