



Engineering Notes: EWP-Floors

**MHP 23040**

PLEASE READ ALL NOTES PRIOR TO INSTALLATION OF THE COMPONENT

RESPONSIBILITIES

THE RESPONSIBILITY OF THE UNDERSIGNED ENGINEER IS ONLY LIMITED TO THE CALCULATION OF THIS BUILDING COMPONENT FOR THE LOADS AND CONDITIONS SHOWN ON THIS DRAWING.

THE RESPONSIBILITY OF THE UNDERSIGNED IS LIMITED TO THE VERIFICATION OF THE STRUCTURAL CAPACITY OF THE FLOOR JOISTS AND LVL BEAMS BASED ON PLACEMENT AS SHOWN ON THE LAYOUT. THE LOADS APPLIED ARE LIMITED TO THE GRAVITY EFFECTS OF THE SPECIFIED LOADS. THE STRUCTURAL INTEGRITY OF THE BUILDING AND THE EFFECT OF WIND, UPLIFT, SEISMIC, LATERAL OR OTHER FORCES, CALCULATION OF ADEQUATE SUPPORT AND ANCHORAGE OF COMPONENTS, AS WELL AS THE DIMENSIONS AND DESIGN LOADS USED TO CALCULATE COMPONENTS ARE THE RESPONSIBILITY OF THE OVERALL BUILDING DESIGNER. FLOOR JOISTS AND OSB RIM BOARD ARE DESIGNED TO CARRY UNIFORMLY DISTRIBUTED LOADS ONLY. POINT LOADS SHOULD BE TRANSFERRED THROUGH THE FLOOR CAVITY WITH TRANSFER BLOCKS. STRUCTURAL ELEMENTS SUCH AS WALLS, POSTS, CONNECTORS, AND TRANSFER BLOCKS ARE THE RESPONSIBILITY OF THE OVERALL BUILDING DESIGNER.

THE UNDERSIGNED ENGINEER DISCLAIMS ANY RESPONSIBILITY FOR DAMAGES AS A RESULT OF BEING FURNISHED FAULTY OR INCORRECT INFORMATION, SPECIFICATIONS AND/OR DESIGNS.

COMPONENT DESIGN INFORMATION

1. THIS BUILDING COMPONENT IS CERTIFIED AS AN INDIVIDUAL COMPONENT FOR THE LOADS AND CONDITIONS SHOWN ON THE CALCULATION PAGE BASED ON INFORMATION PROVIDED BY KOTT DESIGN.
2. THE BUILDING COMPONENT USED IN CONSTRUCTION MUST BE THE SAME AS INDICATED ON THE DRAWINGS.
3. UNLESS NOTED OTHERWISE ON THE LAYOUT OR BEAM CALCULATION SHEET, MEMBERS CONSISTING OF MULTIPLE PLIES MUST BE CONNECTED AS PER THE DOCUMENT "MULTIPLE MEMBER CONNECTION DETAILS" SHOWN ON PAGE 2 OF THIS DOCUMENT.
4. PASS-THRU TRANSFER BLOCK FRAMING IS REQUIRED AT ALL POINT LOADS OVER BEARINGS.
5. IT IS ASSUMED THAT EACH LVL BEAM WHERE NOT SEATED IN A HANGER IS ATTACHED USING (4) FOUR 3-1/4" COMMON SPIRAL NAILS FOR UP TO 5.5" LONG BEARINGS AND USING (6) SIX 3-1/4" COMMON SPIRAL NAILS FOR BEARINGS EQUAL TO OR LONGER THAN 5.5", UNLESS INDICATED OTHERWISE.

CODE

THIS BUILDING COMPONENT IS DESIGNED IN ACCORDANCE WITH THE NATIONAL BUILDING CODE OF CANADA, THE ONTARIO BUILDING CODE, CCMC AND CANADIAN STANDARDS ASSOCIATION GUIDELINES.

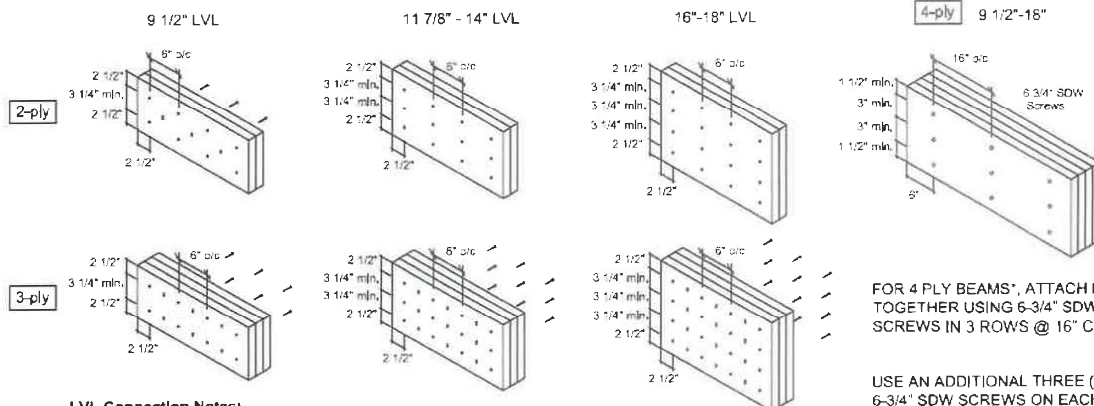
HANDLING AND INSTALLATION

1. DO NOT DRILL ANY HOLE, CUT OR NOTCH A CERTIFIED BUILDING COMPONENT WITHOUT A WRITTEN PRE-AUTHORIZATION.
2. INSTALLATION AND ASSEMBLY OF FLOOR JOISTS AND LVL BEAMS IS TO BE CARRIED OUT IN ACCORDANCE WITH THE CURRENT EDITION OF THE MANUFACTURER'S LITERATURE.

MULTIPLE MEMBER CONNECTIONS FOR BEAMS SHOWN ON KOTT LAYOUTS



MULTIPLE MEMBER CONNECTIONS FOR UNIFORMLY DISTRIBUTED TOP & SIDE LOADED LVL BEAMS SHOWN ON KOTT LAYOUTS



LVL Connection Notes:

- LVL ply width is 1-3/4"
- Nails to be 3 1/2" common wire nails.
- Nails to be located 2 1/2" min. from the top and bottom of the member. Start all nails 2 1/2" min. from ends.
- Minimum 3 1/4" spacing between rows.
- Number of rows and spacing as per details shown, unless noted otherwise.
- "X" represents nail driven from the opposite side.
- Head of all specified screws must be on the loaded side.

FOR 4 PLY BEAMS*, ATTACH PLYS TOGETHER USING 6-3/4" SDW SCREWS IN 3 ROWS @ 16" C/C.

USE AN ADDITIONAL THREE (3) 6-3/4" SDW SCREWS ON EACH SIDE (OF EACH FACE) AT POINT LOAD LOCATIONS @ 1/2 SPACING, WHERE APPLICABLE.

*UNLESS NOTED OTHERWISE ON LAYOUT OR CALCULATION SHEET OF BEAM IN THE FLOOR PACKAGE

FOR MULTIPLE MEMBER CONNECTION OF BOISE ALLJOISTS REFER TO THE BOISE CASCADE INSTALLATION GUIDE

Installation Guide



(Open your phone's camera and hover over this QR code to access it)

Architectural floor plan of the 1st floor of the 'Sudrem Mudroom (2x8 Framing)'. The plan shows a large rectangular room with a central corridor and several smaller rooms. The walls are labeled 'R1'. The floor is labeled 'F1'. The plan includes dimensions, room numbers, and a title block.

Room numbers and dimensions:

- Room 1: 12' x 12' (12' x 12')
- Room 2: 12' x 12' (12' x 12')
- Room 3: 12' x 12' (12' x 12')
- Room 4: 12' x 12' (12' x 12')
- Room 5: 12' x 12' (12' x 12')
- Room 6: 12' x 12' (12' x 12')
- Room 7: 12' x 12' (12' x 12')
- Room 8: 12' x 12' (12' x 12')
- Room 9: 12' x 12' (12' x 12')
- Room 10: 12' x 12' (12' x 12')
- Room 11: 12' x 12' (12' x 12')
- Room 12: 12' x 12' (12' x 12')
- Room 13: 12' x 12' (12' x 12')
- Room 14: 12' x 12' (12' x 12')
- Room 15: 12' x 12' (12' x 12')
- Room 16: 12' x 12' (12' x 12')
- Room 17: 12' x 12' (12' x 12')
- Room 18: 12' x 12' (12' x 12')
- Room 19: 12' x 12' (12' x 12')
- Room 20: 12' x 12' (12' x 12')
- Room 21: 12' x 12' (12' x 12')
- Room 22: 12' x 12' (12' x 12')
- Room 23: 12' x 12' (12' x 12')
- Room 24: 12' x 12' (12' x 12')
- Room 25: 12' x 12' (12' x 12')
- Room 26: 12' x 12' (12' x 12')
- Room 27: 12' x 12' (12' x 12')
- Room 28: 12' x 12' (12' x 12')
- Room 29: 12' x 12' (12' x 12')
- Room 30: 12' x 12' (12' x 12')
- Room 31: 12' x 12' (12' x 12')
- Room 32: 12' x 12' (12' x 12')
- Room 33: 12' x 12' (12' x 12')
- Room 34: 12' x 12' (12' x 12')
- Room 35: 12' x 12' (12' x 12')
- Room 36: 12' x 12' (12' x 12')
- Room 37: 12' x 12' (12' x 12')
- Room 38: 12' x 12' (12' x 12')
- Room 39: 12' x 12' (12' x 12')
- Room 40: 12' x 12' (12' x 12')
- Room 41: 12' x 12' (12' x 12')
- Room 42: 12' x 12' (12' x 12')
- Room 43: 12' x 12' (12' x 12')
- Room 44: 12' x 12' (12' x 12')
- Room 45: 12' x 12' (12' x 12')
- Room 46: 12' x 12' (12' x 12')
- Room 47: 12' x 12' (12' x 12')
- Room 48: 12' x 12' (12' x 12')
- Room 49: 12' x 12' (12' x 12')
- Room 50: 12' x 12' (12' x 12')
- Room 51: 12' x 12' (12' x 12')
- Room 52: 12' x 12' (12' x 12')
- Room 53: 12' x 12' (12' x 12')
- Room 54: 12' x 12' (12' x 12')
- Room 55: 12' x 12' (12' x 12')
- Room 56: 12' x 12' (12' x 12')
- Room 57: 12' x 12' (12' x 12')
- Room 58: 12' x 12' (12' x 12')
- Room 59: 12' x 12' (12' x 12')
- Room 60: 12' x 12' (12' x 12')
- Room 61: 12' x 12' (12' x 12')
- Room 62: 12' x 12' (12' x 12')
- Room 63: 12' x 12' (12' x 12')
- Room 64: 12' x 12' (12' x 12')
- Room 65: 12' x 12' (12' x 12')
- Room 66: 12' x 12' (12' x 12')
- Room 67: 12' x 12' (12' x 12')
- Room 68: 12' x 12' (12' x 12')
- Room 69: 12' x 12' (12' x 12')
- Room 70: 12' x 12' (12' x 12')
- Room 71: 12' x 12' (12' x 12')
- Room 72: 12' x 12' (12' x 12')
- Room 73: 12' x 12' (12' x 12')
- Room 74: 12' x 12' (12' x 12')
- Room 75: 12' x 12' (12' x 12')
- Room 76: 12' x 12' (12' x 12')
- Room 77: 12' x 12' (12' x 12')
- Room 78: 12' x 12' (12' x 12')
- Room 79: 12' x 12' (12' x 12')
- Room 80: 12' x 12' (12' x 12')
- Room 81: 12' x 12' (12' x 12')
- Room 82: 12' x 12' (12' x 12')
- Room 83: 12' x 12' (12' x 12')
- Room 84: 12' x 12' (12' x 12')
- Room 85: 12' x 12' (12' x 12')
- Room 86: 12' x 12' (12' x 12')
- Room 87: 12' x 12' (12' x 12')
- Room 88: 12' x 12' (12' x 12')
- Room 89: 12' x 12' (12' x 12')
- Room 90: 12' x 12' (12' x 12')
- Room 91: 12' x 12' (12' x 12')
- Room 92: 12' x 12' (12' x 12')
- Room 93: 12' x 12' (12' x 12')
- Room 94: 12' x 12' (12' x 12')
- Room 95: 12' x 12' (12' x 12')
- Room 96: 12' x 12' (12' x 12')
- Room 97: 12' x 12' (12' x 12')
- Room 98: 12' x 12' (12' x 12')
- Room 99: 12' x 12' (12' x 12')
- Room 100: 12' x 12' (12' x 12')
- Room 101: 12' x 12' (12' x 12')
- Room 102: 12' x 12' (12' x 12')
- Room 103: 12' x 12' (12' x 12')
- Room 104: 12' x 12' (12' x 12')
- Room 105: 12' x 12' (12' x 12')
- Room 106: 12' x 12' (12' x 12')
- Room 107: 12' x 12' (12' x 12')
- Room 108: 12' x 12' (12' x 12')
- Room 109: 12' x 12' (12' x 12')
- Room 110: 12' x 12' (12' x 12')
- Room 111: 12' x 12' (12' x 12')
- Room 112: 12' x 12' (12' x 12')
- Room 113: 12' x 12' (12' x 12')
- Room 114: 12' x 12' (12' x 12')
- Room 115: 12' x 12' (12' x 12')
- Room 116: 12' x 12' (12' x 12')
- Room 117: 12' x 12' (12' x 12')
- Room 118: 12' x 12' (12' x 12')
- Room 119: 12' x 12' (12' x 12')
- Room 120: 12' x 12' (12' x 12')
- Room 121: 12' x 12' (12' x 12')
- Room 122: 12' x 12' (12' x 12')
- Room 123: 12' x 12' (12' x 12')
- Room 124: 12' x 12' (12' x 12')
- Room 125: 12' x 12' (12' x 12')
- Room 126: 12' x 12' (12' x 12')
- Room 127: 12' x 12' (12' x 12')
- Room 128: 12' x 12' (12' x 12')
- Room 129: 12' x 12' (12' x 12')
- Room 130: 12' x 12' (12' x 12')
- Room 131: 12' x 12' (12' x 12')
- Room 132: 12' x 12' (12' x 12')
- Room 133: 12' x 12' (12' x 12')
- Room 134: 12' x 12' (12' x 12')
- Room 135: 12' x 12' (12' x 12')
- Room 136: 12' x 12' (12' x 12')
- Room 137: 12' x 12' (12' x 12')
- Room 138: 12' x 12' (12' x 12')
- Room 139: 12' x 12' (12' x 12')
- Room 14

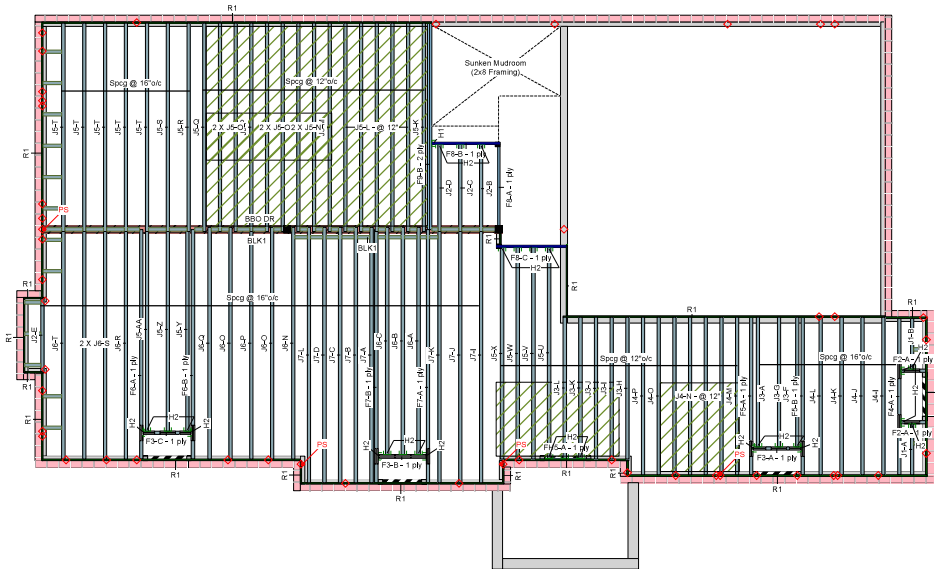


Open your phone's camera and

Hatch Area represents where additional load has been applied, (e.g. 5 psf for ceramic tile)

This placement plan is to be used as an installation guide only. It is meant to be used in conjunction with the manufacturers installation guide, the architectural and structural drawings, and not to replace them.

Ground Floor



Ground Floor

LVL/SJ (Flush)

Label	Description	Width	Depth	Qty	Piles	Pcs	Length
F9	Versa-Lam LVL 2.1E 3100 3P	1.75	11.875	1	2	2	16'-0"
F8	Versa-Lam LVL 2.1E 3100 3P	1.75	11.875			3	6'-0"
F16	Versa-Lam LVL 2.1E 3100 3P	1.75	11.875			1	4'-0"

Joist (Flush)

Label	Description	Width	Depth	Qty	Piles	Pcs	Length
F7	AJS 140	2.5	11.875			2	18'-0"
F6	AJS 140	2.5	11.875			2	16'-0"
F5	AJS 140	2.5	11.875			2	12'-0"
F4	AJS 140	2.5	11.875			1	10'-0"
F3	AJS 140	2.5	11.875			3	4'-0"
F2	AJS 140	2.5	11.875			2	2'-0"
J7	AJS 140	2.5	11.875			8	18'-0"
J9	AJS 140	2.5	11.875			12	16'-0"
J5	AJS 140	2.5	11.875			29	14'-0"
J4	AJS 140	2.5	11.875			11	12'-0"
J3	AJS 140	2.5	11.875			8	10'-0"
J2	AJS 140	2.5	11.875			4	6'-0"
J1	AJS 140	2.5	11.875			2	4'-0"

Rim Board

Label	Description	Width	Depth	Qty	Piles	Pcs	Length
R1	Norbord Rimboard Plus 1.125 X 11.875	1.125	11.875			13	12'-0"

Block

Label	Description	Width	Depth	Qty	Piles	Pcs	Length
BLK1	AJS 140	2.5	11.875	1mF1		Varies	43'-0"

Hanger

Label	Pcs	Description	Skew	Slope	fasteners	fasteners
H1	1	HUS1.6/10			30 16d	10 16d
H2	29	1/2" F2501			12 10dX1 1/2	1 8x1 1/4WS

Notes

1. All blocking to be cut from 12' joist

2. 2' & 4' Lengths to be cut from 8' Lengths to be cut from 12' Length

3. Ends of joists to be laterally supported

4. Packing of Steel beams and attachment by others

5. Shower and water closet flange locations are approximate only, consult architectural drawing for exact locations

6. Joist identified as "B" are dropped and supplied by others

7. Install 2x4 blocking @ 24" o/c under parallel nonloadbearing walls

8. Load transfer blocks to be installed under all point loads

9. Refer to Multiple Member Connection Detail for ply to ply nailing or bolting requirements

10. Hangers and Fasteners to be installed as per manufacturer

11. Framing shown in this layout may deviate from architectural drawings, Arch / Eng to review and approve the deviation prior to construction.

12. Multi Ply beams with lead loading to have all fasteners installed with the head on the side of the applied load.

13. Certification of adequate support & anchorage of components is the responsibility of the building designer; suggested uplift connectors are as shown

14. Where beam happens on side of 3-ply member, it is recommended that the equivalent quantity and size of nails required for the hanger attachment also be installed on opposite side of the 3-ply member.

Legend

1x6

Point Load Support

Load from Above

Wall

Wall Opening

Norbord Rimboard Plus 1.125 X 11.875

AJS 140 11.875

Versa-Lam LVL 2.1E 3100 3P 1.75 X 11.875

Form.

3228 Moore Dr. Ottawa
14 Anderson Blvd, Uxbridge
Ontario
613-638-2775 /
905-642-4400

CCMC References

B386 - 1247.2R, 1251.8R
LP - 1347.2R, Reobring - 13310-R
R9 - 14056-R

Kott



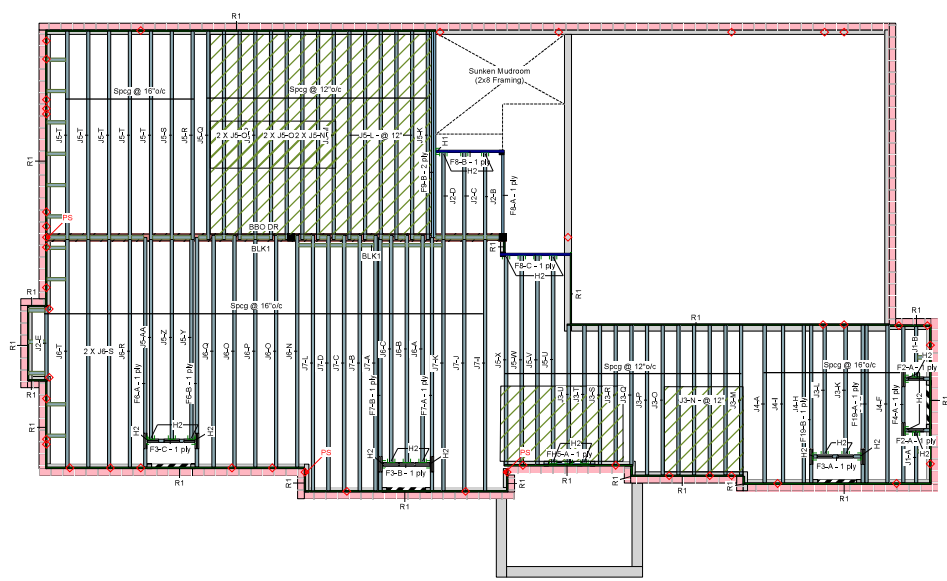
Open your phone's camera or
 scan over this QR code to access






Hatch Area represents where additional load has been applied, (e.g. 5 psf for ceramic tile)

ENG-380724-154-KTF-GREENPARK ZADORRA ESTATES VILLA 12A-1 2 3

Page 23 of 38

Ground Floor



Ground Floor LV/LSL (Flush)								JOB INFORMATION	
Label	Description	Width	Depth	Qty	Piles	Pcs	Length	Builder	
F9	Versa-Lam LVL 2.1E 3100 SP	1.75	11.875	1	2	2	14'-0"	GREENPARK	
F8	Versa-Lam LVL 2.1E 3100 SP	1.75	11.875			3	6'-0"	Project	
F18	Versa-Lam LVL 2.1E 3100 SP	1.75	11.875			1	4'-0"	Shipping	
F15	Versa-Lam LVL 2.1E 3100 SP	1.75	11.875					ZADORRA ESTATES OSHAWA, ON	
Joist (Flush)								Sales Rep	
Label	Description	Width	Depth	Qty	Piles	Pcs	Length	RM	
F7	AJS 140	2.5	11.875			2	18'-0"	Designer	
F8	AJS 140	2.5	11.875			2	16'-0"	RCO	
F19	AJS 140	2.5	11.875			2	12'-0"	Plotted	
F4	AJS 140	2.5	11.875			1	10'-0"	June 19, 2023	
F3	AJS 140	2.5	11.875			3	4'-0"	Layout Name	
F2	AJS 140	2.5	11.875			2	2'-0"	VILLA 12A-3	
J7	AJS 140	2.5	11.875			8	18'-0"	Job Path	
J6	AJS 140	2.5	11.875			12	16'-0"	C:\CUSTOMERS\GREENPARK\ZADORRA ESTATE VILLA 12A\VILLA 12A-3-VILLA 12A-3.dwg	
J5	AJS 140	2.5	11.875			29	14'-0"	DESIGN CRITERIA	
J4	AJS 140	2.5	11.875			5	12'-0"	Ground Floor	
J3	AJS 140	2.5	11.875			14	10'-0"	Design Method	
J2	AJS 140	2.5	11.875			4	6'-0"	Building Code	
J1	AJS 140	2.5	11.875			2	4'-0"	NBC 2015 / OBC 2012	
Rim Board								Floor Loads	
Label	Description	Width	Depth	Qty	Piles	Pcs	Length	Live	
R1	Norbord Rimboard Plus 1.125 X 11.875	1.125	11.875			13	12'-0"	Dead	
Blocking								Deflection Joist	
								40	
Label	Description	Width	Depth	Qty	Piles	Pcs	Length	15	
BLK1	AJS 140	2.5	11.875	LinFt		Varies	43'-0"	LL Span /	
Hanger								TL Span /	
								360	
Beam/Girder								TL Cant 2L	
								240	
Label	Pcs	Description	Skew	Slope	fasteners	fasteners	Length	TL Cant 2L	
H1	1	HUS1.61/10			30 16d	10 16d		360	
H2	28	LF2511			12 10d x 1 1/2	1 89 x 1 1/4 W8		240	
1. All blocking to be cut from 12" joists								Deflection Flush Girder	
2. 2' & 4' Lengths to be cut from 8' Length, 6' lengths to be cut from 12' Length								360	
3. Ends of joists to be laterally supported								TL Span /	
4. Packing of Steel beams and attachment by others								TL Cant 2L	
5. Shower and water closet flange locations are approximate only, consult architectural drawing for exact locations								360	
6. Beams identified as "B" are dropped and supplied by others								240	
7. Install 2x4 blocking @ 24" o/c under parallel non-loadbearing walls								Deflection Dropped Girder	
8. Load transfer blocks to be installed under all point loads								TL Span /	
9. Refer to Multiple Member Connection Detail for ply to ply nailing or bolting requirements								TL Span /	
10. Hangers and Fasteners to be installed as per manufacturer								360	
11. Framing shown on this layout may deviate from architectural drawings, Arch / Eng to review and approve the deviation prior to construction								TL Cant 2L	
12. Multi Ply beams with side loading to have all fasteners installed with the head on the side of the applied load								240	
13. Confirmation of adequate support & anchorage of components is the responsibility of the building designer; suggested uplift connectors are as shown								Deflection Header	
14. Where beam hangs on side of 3-ply member, it is recommended that the equivalent quantity and size of nails required for the hanger attachment also be installed on opposite side of the 3-ply member.								TL Span /	
Legend								TL Cant 2L	
								360	
								Decking	
								OSB	
								Thickness	
								3/4"	
								Fastener	
								Nailed & Glued	
								Vibration	
								CCMC References	
								Boise - 12472-R, 12787-R	
								LP - 12412-R, Roseburg - 13310-R	
								Formex - 14055-R	
								Kott Inc.	
								3228 Moodie Dr. Ottawa	
								14 Anderson Blvd. Uxbridge, Ontario	
								613-838-2775 /	
								905-542-4400	
								KOTT	
								KOTT	

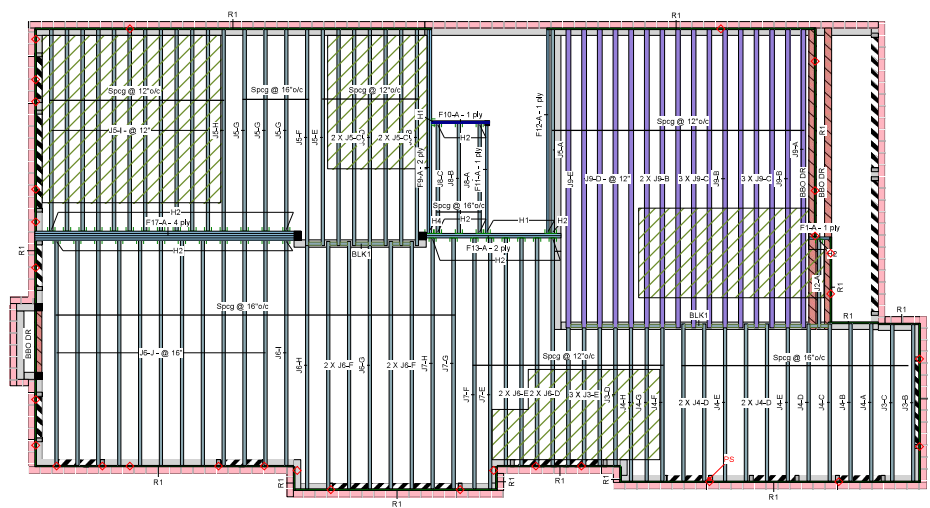
Installation Guide







Hatch Area represents where additional load has been applied, (e.g. 5 psf for ceramic tile)


ENG-880724-154-KTF-GREENPARK-ZADORRA ESTATES VILLA 12A-1 & 2

Page 28 of 38

Second Floor



Legend	
	Point Load Support
	Load from Above
	Wall Opening
	Norbord Rimboard Plus 1.125 X 11.875
	AJS 140 11.875
	Versa-Lam LVL 2.1E 3100 SP 1.75 X 11.875

Second Floor										JOB INFORMATION	
LV/L/SL (Flush)										Builder	
Label	Description	Width	Depth	Qty	Piles	Pcs	Length			GREENPARK	
F17	Versa-Lam LVL 2.1E 3100 SP	1.75	11.875	1	4	4	18-0			Project	
F9	Versa-Lam LVL 2.1E 3100 SP	1.75	11.875	1	2	2	14-0			Shipping	
F12	Versa-Lam LVL 2.1E 3100 SP	1.75	11.875			1	14-0			ZADORRA ESTATES OSHAWA, ON	
F13	Versa-Lam LVL 2.1E 3100 SP	1.75	11.875	1	2	2	10-0			Sales Rep	
F11	Versa-Lam LVL 2.1E 3100 SP	1.75	11.875			1	8-0			RM	
F10	Versa-Lam LVL 2.1E 3100 SP	1.75	11.875			1	4-0			Designer	
F1	Versa-Lam LVL 2.1E 3100 SP	1.75	11.875			1	24-0			Plotted	
										June 22, 2023	
Joist (Flush)										Layout Name	
Label	Description	Width	Depth	Qty	Piles	Pcs	Length			VILLA 12A-1	
J7	AJS 140	2.5	11.875			4	18-0			Job Path	
J8	AJS 140	2.5	11.875			22	16-0			C:\CUSTOMERS\GREENPARK\ZADORRA ESTATES VILLA 12A\VF-VILLA 12A-1\VF-VILLA 12A-1.dwg	
J5	AJS 140	2.5	11.875			24	14-0			DESIGN CRITERIA	
J4	AJS 140	2.5	11.875			13	13-0			Second Floor	
J3	AJS 140	2.5	11.875			6	10-0			Design Method	
J8	AJS 140	2.5	11.875			3	8-0			Building Code	
J2	AJS 140	2.5	11.875			1	6-0			LSD (Canada)	
J9	AJS 25	3.5	11.875			16	20-0			NBCC 2015 / OBC 2012	
Rim Board										Floor Loads	
Label	Description	Width	Depth	Qty	Piles	Pcs	Length			Live	
R1	Norbord Rimboard Plus 1.125 X 11.875	1.125	11.875			14	124-0			Dead	
										Deflection Joist	
Label	Description	Width	Depth	Qty	Piles	Pcs	Length			LL Span /	
BLK1	AJS 140	2.5	11.875			Varies	15-0			TL Span /	
Hanger										LL Cant 2/L	
										TL Cant 2/L	
										Deflection Flush Girder	
Label	Pcs	Description	Skew	Slope	fasteners	fasteners				LL Span /	
H1	3	AJS1.81710			30 16d	10 16d				TL Span /	
H2	43	125S11			42 16d	1 80x1 14WWS				LL Cant 2/L	
H4	1	125US410			45 16d	16 16d				TL Cant 2/L	
Custom										Deflection Dropped Girder	
Label	Description	Width	Depth	Qty	Piles	Pcs	Length			LL Span /	
	6-3/4" Simpson 65W Screw					28				TL Span /	
Multi-Ply Fastening										LL Cant 2/L	
Ground Floor, Second Floor										Deflection Header	
										LL Span /	
										LL Cant 2/L	
										TL Cant 2/L	
F17-A										Decking	
Fasten all plies using 2 rows of SDW22634 at 16" o.c. except for regions covered by concentrated load fastening.										Thickness	
Fasten at concentrated side load each side of concentrated load at 12-0-9 with 1 column 2 rows of SDW22634										Fastener	
										Vibration	
										Ceiling:	
										Gypsum 1/2"	
										CCMC References	
										Boise - 12472-R, 12787-R	
										LP - 12412-R, Roseburg - 13310-R	
										Form - 14055-64	
										Kott Inc.	
										3228 Moodie Dr, Ottawa	
										14 Anderson Blvd, Uxbridge	
										Ontario	
										613-838-2775 / 905-642-4400	
											
										1. All blocking to be cut from 12' joists	
										2. 2' & 4' Lengths to be cut from 8' Length, 6' lengths to be cut from 12' Length	
										3. Ends of joists to be laterally supported	
										4. Packing of Steel beams and attachment by others	
										5. Shower and water closet flange locations are approximate only, consult architectural drawing for exact locations	
										6. Beams identified as 'B' are dropped and supplied by others	
										7. Install 2x4 blocking @ 24" o/c under parallel non-loadbearing walls	
										8. Load transfer blocks to be installed under all point loads	
										9. Refer to Multiple Member Connection Detail for ply to ply nailing or bolting requirements	
										10. Hangers and Fasteners to be installed as per manufacturer	
										11. Framing shown on this layout may deviate from architectural drawings, Arch / Eng to review and approve the deviation prior to construction,	
										12. Multi Ply beams with side loading to have all fasteners installed with the head on the side of the applied load.	
										13. Confirmation of adequate support & anchorage of components is the responsibility of the building designer; suggested uplift connectors are as shown	
										14. Where beam hangs on side of 3-ply member, it is recommended that the equivalent quantity and size of nails required for the hanger attachment also be installed on opposite side of the 3-ply member.	

Installation Guide



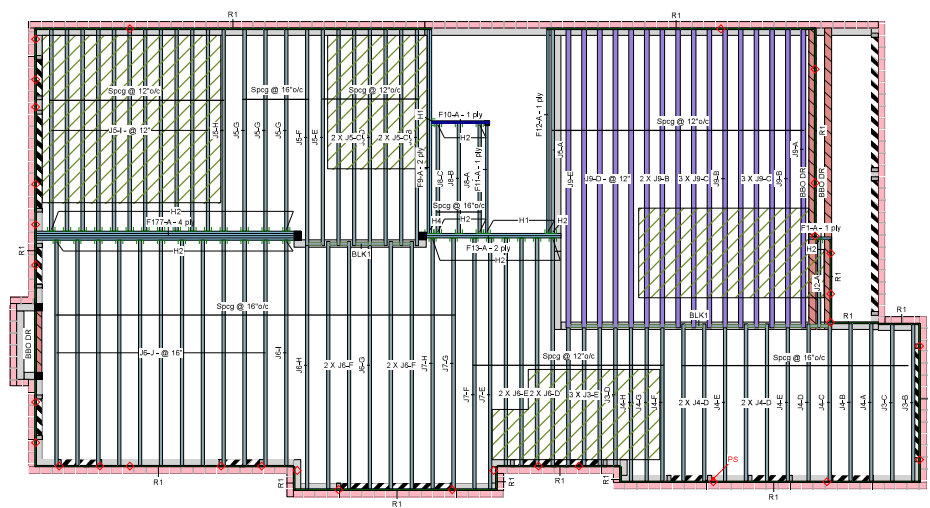
(Open your phone's camera and hover over this QR code to access it)

Hatch Area represents where additional load has been applied, (e.g. 5 pcf for ceramic tile)

ENG-380723-154-KTF-GREENPARK-ZADORRA ESTATES VILLA 12A-1 & 2

Page 22 of 38

Second Floor



- Legend**
- PS Point Load Support
 - Load from Above
 - Wall
 - Wall Opening
 - Norbord Rimboard Plus 1.125 X 11.875
 - AJS 140 11.875
 - AJS 25 11.875
 - Versa-Lam LVL 2.1E 3100 SP 1.75 X 11.875

Installation Guide



(Open your phone's camera and
hover over this QR code to access it)

Hatch Area represents where
additional load has been applied,
(e.g. 5 pcf for ceramic tile)

Second Floor										JOB INFORMATION	
LV/L/SL (Flush)										Builder	
F177	Versa-Lam LVL 2.1E 3100 SP	1.75	11.875	1	4	4	18-0			GREENPARK	
F9	Versa-Lam LVL 2.1E 3100 SP	1.75	11.875	1	2	2	14-0			Project	
F12	Versa-Lam LVL 2.1E 3100 SP	1.75	11.875			1	14-0			Shipping	
F13	Versa-Lam LVL 2.1E 3100 SP	1.75	11.875	1	2	2	10-0			ZADORRA ESTATES OSHAWA, ON	
F11	Versa-Lam LVL 2.1E 3100 SP	1.75	11.875			1	8-0			Sales Rep	
F10	Versa-Lam LVL 2.1E 3100 SP	1.75	11.875			1	4-0			RM	
F1	Versa-Lam LVL 2.1E 3100 SP	1.75	11.875			1	24-0			Designer	
										Plotted	
										June 22, 2023	
										Layout Name	
										VILLA 12A-2	
										Job Path	
										C:\CUSTOMERS\GREENPARK\ZADORRA ESTATES VILLA 12A\VF-VILLA 12A-2\VFLL 12A-2.dwg	
Joist (Flush)										DESIGN CRITERIA	
J7	AJS 140	2.5	11.875			4	18-0			Second Floor	
J8	AJS 140	2.5	11.875			22	16-0			LSD (Canada)	
J5	AJS 140	2.5	11.875			24	14-0			Building Code	
J4	AJS 140	2.5	11.875			13	13-0			NBCC 2015 / OBC 2012	
J3	AJS 140	2.5	11.875			6	10-0			Floor Loads	
J8	AJS 140	2.5	11.875			3	8-0			Live	
J2	AJS 140	2.5	11.875			1	6-0			Dead	
J9	AJS 25	3.5	11.875			16	20-0			Deflection Joist	
										LL Span /	
										TL Span /	
										LL Cant 2/L	
										TL Cant 2/L	
										Deflection Flush Girder	
										LL Span /	
										TL Span /	
										LL Cant 2/L	
										TL Cant 2/L	
										Deflection Dropped Girder	
										LL Span /	
										TL Span /	
										LL Cant 2/L	
										TL Cant 2/L	
										Deflection Header	
										LL Span /	
										TL Span /	
										LL Cant 2/L	
										TL Cant 2/L	
										Decking	
										OSB	
										Thickness	
										5/8"	
										Fastener	
										Nailed & Glued	
										Vibration	
										Ceiling:	
										Gypsum 1/2"	
Multi-Ply Fastening										CCMC References	
										Boise - 12472-R, 12787-R	
										LP - 12412-R, Roseburg - 13310-R	
										Fore - 14055-R	
										Kott Inc.	
										3228 Moodie Dr, Ottawa	
										14 Anderson Blvd, Uxbridge	
										Ontario	
										613-838-2775 /	
										905-642-4400	
										14. Where beam hangs on side of 3-ply member, it is recommended that the equivalent quantity and size of nails required for the hanger attachment also be installed on opposite side of the 3-ply member.	

ENG-380723-154-KTF-GREENPARK ZADORRA ESTATES VILLA 12A-1 & 2

Page 18 of 38

Second Floor



Legend

	Point Load Support
	Load from Above
	Wall
	Wall Opening
	Norbord Rimboard Plus 1,125 X 11,875
	AJS 140 11,875
	AJS 25 11,875
	Versa-Lam LVL 2.1E 3100 SP 1.75 X 11,875

Installation Guide



(Open your phone's camera and hover over this QR code to access it)

Hatch Area represents where additional load has been applied, (e.g. 5 pcf for ceramic tile)

Second Floor										JOB INFORMATION	
LV/L/SL (Flush)										Builder	
F177	Versa-Lam LVL 2.1E 3100 SP	1.75	11,875	1	4	4	184-0			GREENPARK	
F9	Versa-Lam LVL 2.1E 3100 SP	1.75	11,875	1	2	2	144-0			Project	
F12	Versa-Lam LVL 2.1E 3100 SP	1.75	11,875			1	144-0			Shipping	
F13	Versa-Lam LVL 2.1E 3100 SP	1.75	11,875	1	2	2	104-0			ZADORRA ESTATES OSHAWA, ON	
F11	Versa-Lam LVL 2.1E 3100 SP	1.75	11,875			1	84-0			Sales Rep	
F10	Versa-Lam LVL 2.1E 3100 SP	1.75	11,875			1	44-0			RM	
F1	Versa-Lam LVL 2.1E 3100 SP	1.75	11,875			1	24-0			Designer	
										RCO	
										Plotted	
										June 22, 2023	
										Layout Name	
										VILLA 12A-3	
										Job Path	
										C:\CUSTOMERS\GREENPARK\ZADORRA ESTATES VILLA 12A\VF-VILLA 12A-3\VF-VILLA 12A-3.dwg	
Joist (Flush)										DESIGN CRITERIA	
J7	AJS 140	2.5	11,875			4	184-0			Second Floor	
J8	AJS 140	2.5	11,875			22	164-0			LSD (Canada)	
J5	AJS 140	2.5	11,875			24	144-0			Building Code	
J4	AJS 140	2.5	11,875			4	134-0			NBCC 2015 / OBC 2012	
J3	AJS 140	2.5	11,875			15	104-0			Floor Loads	
J8	AJS 140	2.5	11,875			3	84-0			Live	
J2	AJS 140	2.5	11,875			1	64-0			Dead	
J9	AJS 25	3.5	11,875			16	204-0			Deflection Joist	
										LL Span /	
										TL Span /	
										LL Cant. 2U	
										TL Cant. 2U	
										Deflection Flush Girder	
										LL Span /	
										TL Span /	
										LL Cant. 2U	
										TL Cant. 2U	
										Deflection Dropped Girder	
										LL Span /	
										TL Span /	
										LL Cant. 2U	
										TL Cant. 2U	
										Deflection Header	
										LL Span /	
										TL Span /	
										LL Cant. 2U	
										TL Cant. 2U	
										Decking	
										OSB	
										Thickness	
										5/8"	
										Fastener	
										Nailed & Glued	
										Vibration	
										Ceiling:	
										Gypsum 1/2"	
Multi-Ply Fastening										CCMC References	
Ground Floor, Second Floor										Boise - 12472-R, 12787-R	
										LP - 12412-R, Roseburg - 13310-R	
										Fore - 14055-R	
										Kott Inc.	
										3228 Moodie Dr, Ottawa	
										14 Anderson Blvd, Uxbridge	
										Ontario	
										613-838-2775 / 905-642-4400	
										14. Where beam hangs on side of 3-ply member, it is recommended that the equivalent quantity and size of nails required for the hanger attachment also be installed on opposite side of the 3-ply member.	