

Products				
PlotID	Length	Product	Plies	Net Qty
J1	18-00-00	11 7/8" NI-40x	1	9
J2	16-00-00	11 7/8" NI-40x	1	10
J2DJ	16-00-00	11 7/8" NI-40x	2	4
J3	14-00-00	11 7/8" NI-40x	1	33
J3DJ	14-00-00	11 7/8" NI-40x	2	8
J4	12-00-00	11 7/8" NI-40x	1	10
J5	8-00-00	11 7/8" NI-40x	1	5
J6	6-00-00	11 7/8" NI-40x	1	14
J7	4-00-00	11 7/8" NI-40x	1	9
B4	10-00-00	1 3/4" x 11 7/8" (2.0E 3100) WestFraser LVL	2	2
B3	8-00-00	1 3/4" x 11 7/8" (2.0E 3100) WestFraser LVL	1	1
B1	8-00-00	1 3/4" x 11 7/8" (2.0E 3100) WestFraser LVL	2	2
B2	8-00-00	1 3/4" x 11 7/8" (2.0E 3100) WestFraser LVL	2	2
B6	6-00-00	1 3/4" x 11 7/8" (2.0E 3100) WestFraser LVL	1	1
B5	4-00-00	1 3/4" x 11 7/8" (2.0E 3100) WestFraser LVL	2	2
R1	168-00-00	1 1/8" x 11 7/8" APA Rim Board	1	1
Bk1	64-00-00	11 7/8" NI-40x	1	1

Connector Summary		
Qty	Manuf	Product
24	H1	IUS2.56/11.88
6	H1	IUS2.56/11.88
6	H1	IUS2.56/11.88
2	H2	HUS1.81/10
1	H3	HU312-2
1	H4C	HUC412



FROM PLAN DATED: 2023/03
BUILDER: GREEN PARK HOMES
SITE: TRINI GROUP DEVE.
MODEL: ROSE 9
ELEVATION: 1,2,3
LOT:
CITY: RICHMOND HILL
SALESMAN: RICK DICIANO
DESIGNER: AJ
REVISION:

REFER TO THE **NORDIC INSTALLATION GUIDE** FOR PROPER STORAGE AND INSTALLATION.
SQUASH BLOCKS OF 2x4, 2x6, 2x8 SPF #2 REQ'D UNDER INTERIOR UNIFORM LOAD BEARING WALLS.
MULTIPLE SQUASH BLOCKS REQ'D UNDER CONCENTRATED LOADS. SEE FIGURE 1.
CANTILEVERED JOISTS INCLUDING **CANT' OVER BRICK** REQ. I-JOIST BLOCKING ALONG BEARING AND RIMBOARD CLOSURE AT ENDS. SEE FIGURES 4/5 FOR REINFORCEMENT REQUIREMENTS.
FOR **HOLES** INCLUDING **DUCT CHASE** AND **FIELD CUT OPENINGS** SEE FIGURE 6 AND TABLES 6.1/6.2.
CERAMIC TILE APPLICATION AS PER OBC 9.30.6.

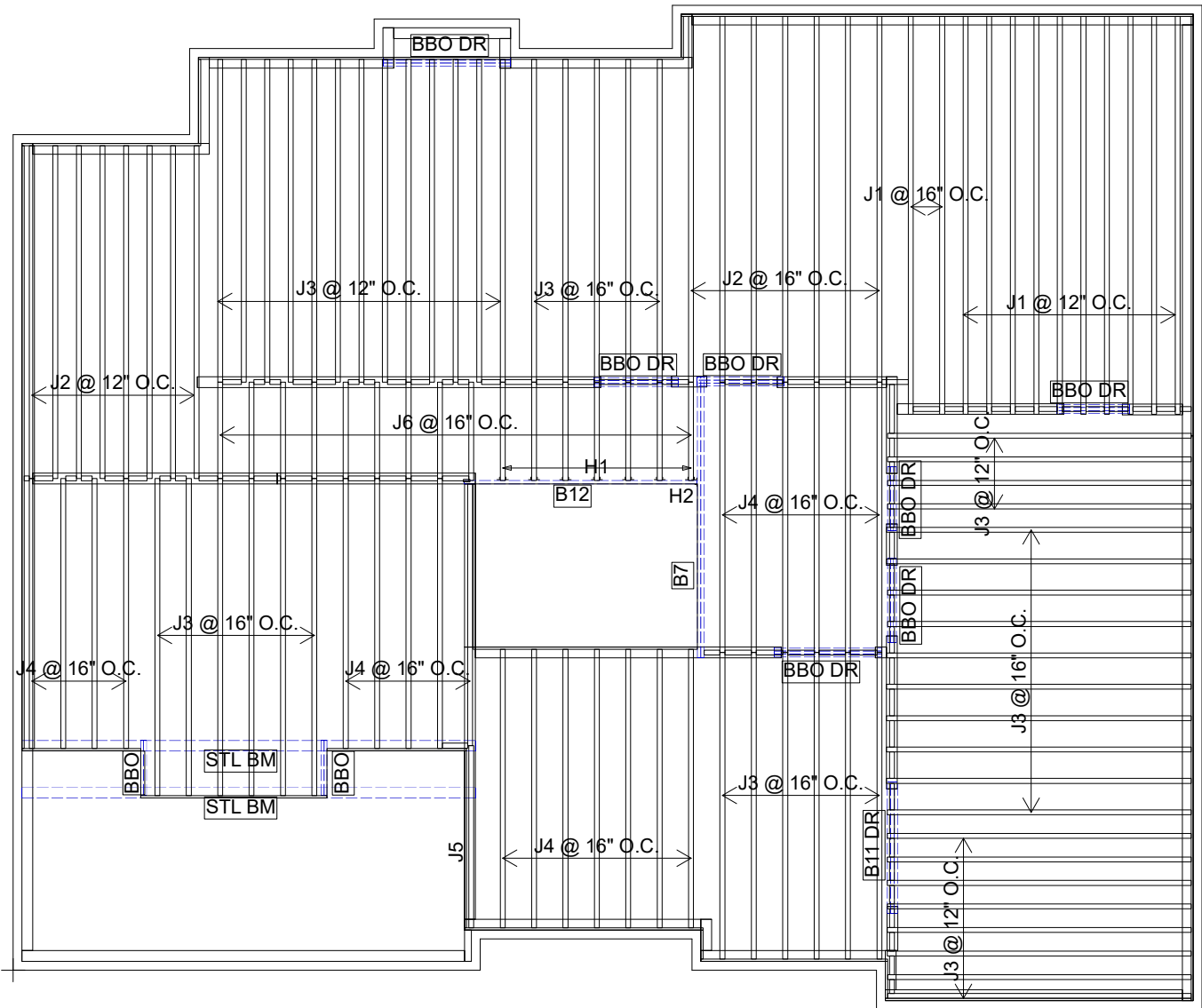
ALL **CONNECTORS** MUST BE INSTALLED AS PER THE **MANUFACTURER'S SPECIFICATIONS** USING THE MANUFACTURER **SPECIFIED FASTENERS**.
ALL **BEAM HANGER FASTENERS** INSTALLED INTO THE **SUPPORTING MEMBER** **MUST** BE A MINIMUM OF **3.5"** IN LENGTH UNLESS OTHERWISE SPECIFIED BY THE SUPPORTING MEMBER ENGINEER OF RECORD.

LOADING:
LIVE LOAD: 40.0 lb/ft²
DEAD LOAD: 15.0 lb/ft²
TILE LOAD: +5.0 lb/ft²
JOIST LL DEFLECTION LIMIT: L/480
SUBFLOOR: 3/4" GLUED AND NAILED

DATE: 2023-07-04

1st FLOOR FRAMING

CITY OF RICHMOND HILL
BUILDING DIVISION
05/01/2024
RECEIVED
AND NAILED



Products				
PlotID	Length	Product	Plies	Net Qty
J1	18-00-00	11 7/8" NI-40x	1	12
J2	16-00-00	11 7/8" NI-40x	1	15
J3	14-00-00	11 7/8" NI-40x	1	52
J4	12-00-00	11 7/8" NI-40x	1	22
J5	8-00-00	11 7/8" NI-40x	1	1
J6	6-00-00	11 7/8" NI-40x	1	16
B11 DR	6-00-00	1 3/4" x 9 1/2" (2.0E 3100) WestFraser LVL	3	3
B7	12-00-00	1 3/4" x 11 7/8" (2.0E 3100) WestFraser LVL	2	2
B12	10-00-00	1 3/4" x 11 7/8" (2.0E 3100) WestFraser LVL	1	1
R1	200-00-00	1 1/8" x 11 7/8" APA Rim Board	1	1
Bk1	74-00-00	11 7/8" NI-40x	1	1

Connector Summary		
Qty	Manuf	Product
7	H1	IUS2.56/11.88
1	H2	HUS1.81/10



FROM PLAN DATED: 2023/03
BUILDER: GREEN PARK HOMES
SITE: TRINI GROUP DEVE.
MODEL: ROSE 9
ELEVATION: 1
LOT:
CITY: RICHMOND HILL
SALESMAN: RICK DICIANO
DESIGNER: AJ
REVISION:

REFER TO THE **NORDIC INSTALLATION GUIDE** FOR PROPER STORAGE AND INSTALLATION.
SQUASH BLOCKS OF 2x4, 2x6, 2x8 SPF #2 REQ'D UNDER INTERIOR UNIFORM LOAD BEARING WALLS.
MULTIPLE SQUASH BLOCKS REQ'D UNDER CONCENTRATED LOADS. SEE FIGURE 1.
CANTILEVERED JOISTS INCLUDING **CANT' OVER BRICK** REQ. I-JOIST BLOCKING ALONG BEARING AND RIMBOARD CLOSURE AT ENDS. SEE FIGURES 4/5 FOR REINFORCEMENT REQUIREMENTS.
FOR **HOLES** INCLUDING **DUCT CHASE** AND **FIELD CUT OPENINGS** SEE FIGURE 6 AND TABLES 6.1/6.2.
CERAMIC TILE APPLICATION AS PER OBC 9.30.6.

ALL **CONNECTORS** MUST BE INSTALLED AS PER THE **MANUFACTURER'S SPECIFICATIONS** USING THE MANUFACTURER **SPECIFIED FASTENERS**.
ALL **BEAM HANGER FASTENERS** INSTALLED INTO THE **SUPPORTING MEMBER MUST** BE A MINIMUM OF **3.5"** IN LENGTH UNLESS OTHERWISE SPECIFIED BY THE SUPPORTING MEMBER ENGINEER OF RECORD.

LOADING:
LIVE LOAD: 40.0 lb/ft²
DEAD LOAD: 15.0 lb/ft²
TILE LOAD: +5.0 lb/ft²
JOIST LL DEFLECTION LIMIT: L/480
SUBFLOOR: 5/8" GLUED AND NAILED

DATE: 2023-07-04

2nd FLOOR FRAMING

CITY OF RICHMOND HILL
BUILDING DIVISION
05/01/2024
RECEIVED
AND NAILED

LOADING:
LIVE LOAD: 40.0 lb/ft²
DEAD LOAD: 15.0 lb/ft²
TILE LOAD: +5.0 lb/ft²
JOIST LL DEFLECTION LIMIT: L/480
SUBFLOOR: 5/8" GLUED AND NAILED

NORDIC

INSTALLATION GUIDE NORDIC JOIST

NS-G133 
ENGLISH
VERSION
2020-10-01

Engineered Wood Products

BASIC INSTALLATION GUIDE FOR RESIDENTIAL FLOORS



NORDIC
STRUCTURES

nordic.ca

INSTALLING NORDIC I-JOISTS

1. Installation of Nordic I-joists shall be as shown in details 1.
2. Except for cutting to length, I-joist flanges should never be cut, drilled or notched.
3. Install I-joists so that top and bottom flanges are within 1/2 inch of true vertical alignment.
4. Concentrated loads should only be applied to the top surface of the top flange. Concentrated loads should not be suspended from the bottom flange with the exception of light loads, such as ceiling fans or light fixtures.
5. I-joists must be protected from the weather prior to installation.
6. I-joists must not be used in applications where they will be permanently exposed to weather, or will reach a moisture content of 15 percent or greater, such as in swimming pool or hot tub areas. They must not be installed where they will remain in direct contact with concrete or masonry.
7. End bearing length must be at least 1-3/4 inch. For multiple-span joists, intermediate bearing length must be at least 3-1/2 inches.
8. Ends of floor joists shall be restrained to prevent rollover. Use rim board or I-joist blocking panels.
9. I-joists installed beneath bearing walls perpendicular to the joists shall have full-depth blocking panels, rim board, or squash blocks (cripple blocks) to transfer gravity loads from above the floor system to the wall or foundation below.
10. For I-joists installed directly beneath bearing walls parallel to the joists or used as rim board or blocking panels, the maximum vertical load using a single I-joist is 3,300 plf, and 6,000 plf if double I-joists are used.
11. Continuous lateral support of the I-joist's compression flange is required to prevent rotation and buckling. In simple span uses, lateral support of the top flange is normally supplied by the floor sheathing. In multiple-span or cantilever applications, bracing of the I-joist's bottom flange is also required at interior supports of multiple-span joists, and at the end support next to the cantilever extension. The ends of all cantilever extensions must be laterally braced as shown in details 3, 4, or 5.
12. Nails installed in flange face or edge shall be spaced in accordance with the applicable building code requirements or approved building plans, but should not be closer than those specified on page 3.3 of the Nordic Joist Technical Guide (NS-GT3).
13. Details 1 show only I-joist-specific fastener requirements. For other fastener requirements, see the applicable building code.
14. For proper temporary bracing of wood I-joists and placement of temporary construction loads, see [APA Technical Note: Temporary Construction Loads over I-Joist Roofs and Floors, Form J735](#).

All nails shown in the details are assumed to be common nails unless otherwise noted. Nails shall have a diameter not less than 0.128 inch for 2-1/2-inch nails, or 0.144 inch for 3-inch nails. Individual components not shown to scale for clarity.

SAFETY AND CONSTRUCTION PRECAUTIONS

I-joists are not stable until completely installed, and will not carry any load until fully braced and sheathed.

Avoid Accidents by Following these Important Guidelines:

1. Brace and nail each I-joist as it is installed, using hangers, blocking panels, rim board, and/or cross-bridging at joist ends. When I-joists are applied continuous over interior supports and a load-bearing wall is planned at that location, blocking will be required at the interior support.
 2. When the building is completed, the floor sheathing will provide lateral support for the top flanges of the I-joists. Until this sheathing is applied, temporary bracing, often called struts, or temporary sheathing must be applied to prevent I-joist rollover or buckling.
 - Temporary bracing or struts must be 1x4 inch minimum, at least 8 feet long and spaced no more than 8 feet on centre, and must be secured with a minimum of two 2-1/2-inch nails fastened to the top surface of each I-joist. Nail the bracing to a lateral restraint at the end of each bay. Lap ends of adjoining bracing over at least two I-joists.
 - Or, sheathing (temporary or permanent) can be nailed to the top flange of the first 4 feet of I-joists at the end of the bay.
 3. For cantilevered I-joists, brace top and bottom flanges, and brace ends with closure panels, rim board, or cross-bridging.
 4. Install and fully nail permanent sheathing to each I-joist before placing loads on the floor system. Then, stack building materials over beams or walls only.
 5. Never install a damaged I-joist.
- Improper storage or installation, failure to follow applicable building codes, failure to follow span ratings for Nordic I-joists, failure to follow allowable hole sizes and locations, or failure to use web stiffeners when required can result in serious accidents. Follow these installation guidelines carefully.



Do not walk on I-joists until fully fastened and braced, or serious injuries can result.



Never stack building materials over unsheathed I-joists. Once sheathed, do not overstress I-joist with concentrated loads from building materials.

NORDIC I-JOIST SERIES

RESIDENTIAL SERIES

NI-20 2x3 S-P-F No. 2 3/8 in. web
Depths 9-1/2 and 11-7/8 in.
33 pieces per unit

NI-40x 2x3 1950F MSR 3/8 in. web
Depths 9-1/2, 11-7/8 and 14 in.
33 pieces per unit

NI-60 2x3 2100F MSR 3/8 in. web
Depths 9-1/2, 11-7/8, 14 and 16 in.
33 pieces per unit

NI-80 2x4 2100F MSR 3/8 in. web
Depths 9-1/2, 11-7/8, 14 and 16 in.
23 pieces per unit

NI-90 2x4 2400F MSR 7/16 in. web
Depths 11-7/8, 14 and 16 in.
23 pieces per unit

RIM BOARDS
Width 1-1/8 in.
Length 16 ft
Depths 9-1/2 to 16 in.
APA Rim Board Plus

WEB STIFFENERS

2

Concentrated Load (Load Stiffener)

End Bearing (Bearing Stiffener)

Stiffener Size Requirements

Flange width (in.)	Web stiffener size each side of web (in.)
2-1/2	1 x 2-5/16 Minimum width
3-1/2	1-1/2 x 2-5/16 Minimum width

1a

Nordic I-joist blocking panel

2-1/2" nails at 6" o.c. to top plate (when used for lateral shear transfer, nail to bearing plate with same nailing as required for floor sheathing)

Attach I-joist to top plate per detail 1b

1b

Rim board

One 2-1/2" nail at top and bottom flange

Attach rim board to top plate using 2-1/2" toe-nails at 6" o.c.

Note: 1. To avoid splitting flange, start nails at least 1-1/2 inch from end of I-joist. Nails may be driven at an angle to avoid splitting of bearing plate.

1d

Nordic I-joist or rim board blocking panel per detail 1a

Squash block, 1/8"

Attach squash block to top and bottom flange with one 2-1/2" nail at each location

1e

Transfer load from above to bearing below. Install staggered nails to avoid splitting.

1g

Load-bearing wall above shall align vertically with the wall below. Other conditions, such as offset bearing walls, are not covered by this detail.

Blocking panel required over all interior supports under load-bearing walls or when floor joists are not continuous over support. The NBC requires blocking at load-bearing and non-load-bearing walls constructed with required braced wall panels (shearwalls).

Joist attachment per detail 1b

2-1/2" nails at 6" o.c. to top plate

Nordic I-joist blocking panel per detail 1a

1j

Top- or face-mount hanger installed per manufacturer's recommendations

1k

2x plate flush with inside face of wall or beam. 1/8" overhang allowed past inside face of wall or beam.

1r-1

Blocking panel

2x4 minimum, alternate on opposite side

Two 2-1/2" nails from blocking panel web to lumber piece

NAIL SPACING

1h

Nailing into flange face

Nailing into flange edge

Nailed to Only One Flange Edge (Top View)

Nailed to Both Flange Edges (Top View)

Recommended Closest Nail Spacing for Fastening Sheathing to I-joist Flanges to Minimize Splitting

Fastener size (diameter x length)	Flange face nailing ^(a)			Flange edge nailing ^(a)		
	End distance (in.)	Nail spacing (in.)	End distance (in.)	Nail spacing (in.)	Nail spacing (in.)	
0.128" or smaller in diameter, and 3-1/4" or shorter in length	2	2	2	2	4	
Greater than 0.128" up to 0.148" in diameter, and 3-1/4" or shorter in length	2	3	2	3	6	

^(a) If more than one row is required, offset rows a minimum of 1/2 inch and stagger.

^(b) Closest nail spacing measured from one flange edge. Nails on opposite flange edge must be offset one-half the minimum spacing.

1i

Double I-joist header with full depth filler block shown.

Multiple I-joist header with full depth filler block.

Backer block per detail 1h

1m

Install hanger per manufacturer's recommendations.

Multiple I-joist header with full depth filler block.

Backer block per detail 1h

1n

Do not bevel-out I-joist beyond inside face of wall.

Attach I-joist per detail 1b

Notes:

1. Unless hanger sides laterally support the top flange, bearing stiffeners shall be used.
2. For nailing schedules for Nordic NI-40x or SCL beams, see the manufacturer's recommendations.

Filler Block Requirements for Double I-joist Construction

Flange width (in.)	Net depth (in.)	Filler block size (in.)	Example
9-1/2	2-1/8 to 2-1/4 x 6	2x6 x 5/8" or 3/4" sheathing	
11-7/8	2-1/8 to 2-1/4 x 8	2x8 x 5/8" or 3/4" sheathing	
14	2-1/8 to 2-1/4 x 10	2x10 x 5/8" or 3/4" sheathing	
16	2-1/8 to 2-1/4 x 12	2x12 x 5/8" or 3/4" sheathing	
9-1/2	3 x 6	2 x 2x6	
11-7/8	3 x 8	2 x 2x8	
14	3 x 10	2 x 2x10	
16	3 x 12	2 x 2x12	

Notes:

1. The height of the filler block may be different from that specified in the table, as long as it allows nailing and respects the required gap.

1p

1/8" gap minimum

One 2-1/2" nail at top and bottom flange

2-1/2" nails at 6" o.c.

Rim board

2x4 minimum

Blocking panel (note 1)

One 2-1/2" nail, one side only

Notes:

1. Support back of I-joist web during nailing to prevent damage to web/flange connection.
2. Leave a 1/8-inch to 1/4-inch gap between top of filler block and bottom of top I-joist flange.
3. Filler block is required between joists for full length of span.
4. For flange width of 2-1/2 inches, nail joists together with two rows of 3-inch nails at 12 inches o.c. (clinched when possible) on each side of the double I-joist (total of four nails per foot). For flange width of 3-1/2 inches, use two rows of 3-inch nails at 6 inches o.c. on each side of the double I-joist (total of eight nails per foot).
5. The maximum factored load may be applied to one side of the double I-joist using this detail is 860 dBf.

Filler Block Requirements for Double I-joist Construction

Flange width (in.)	Net depth (in.)	Filler block size (in.)	Example
9-1/2	2-1/8 to 2-1/4 x 6	2x6 x 5/8" or 3/4" sheathing	
11-7/8	2-1/8 to 2-1/4 x 8	2x8 x 5/8" or 3/4" sheathing	
14	2-1/8 to 2-1/4 x 10	2x10 x 5/8" or 3/4" sheathing	
16	2-1/8 to 2-1/4 x 12	2x12 x 5/8" or 3/4" sheathing	
9-1/2	3 x 6	2 x 2x6	
11-7/8	3 x 8	2 x 2x8	
14	3 x 10	2 x 2x10	
16	3 x 12	2 x 2x12	

Notes:

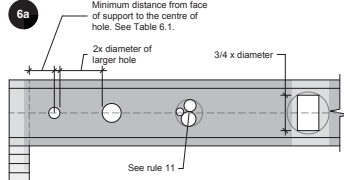
1. The height of the filler block may be different from that specified in the table, as long as it allows nailing and respects the required gap.

WEB HOLES AND OPENINGS

WEB HOLES IN I-JOISTS

Rules for Cutting Holes in I-Joists

1. The distance between the inside edge of the support and the centreline of any hole shall be in compliance with the requirements of Table 6.1.
2. I-joist top and bottom flanges must never be cut, notched or otherwise modified.
3. Whenever possible, field-cut holes should be centred on the middle of the web.
4. The maximum size hole that can be cut into an I-joist web shall equal the clear distance between the flanges of the I-joist minus 1/4 inch. A minimum of 1/8 inch should always be maintained between the top or bottom of the opening and the adjacent I-joist flange.
5. The sides of square holes or longest sides of rectangular holes should not exceed 3/4 of the diameter of the maximum round hole permitted at that location.
6. Where more than one hole is necessary, the distance between adjacent hole edges shall exceed twice the diameter of the largest round hole or twice the size of the largest square hole - or twice the length of the longest side of the longest rectangular hole - and each hole must be sized and located in compliance with the requirements of Table 6.1.
7. Holes measuring 1-1/2 inch or smaller shall be permitted anywhere in a cantilevered section of a joist. Holes of greater size may be permitted subject to verification.
8. A 1-1/2 inch hole or smaller can be placed anywhere in the web provided that it meets the requirements of rule number 6 above.
9. All holes shall be cut in accordance with the restrictions listed above and as illustrated in detail 6a.
10. Limit three maximum-size holes per span.
11. A group of round holes at approximately the same location shall be permitted if it meets the requirements for a single round hole circumscribed around them.



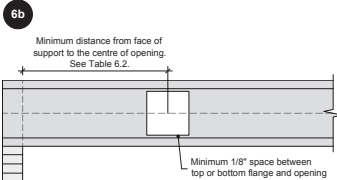
Notes:

1. Never drill, cut or notch the flange, or over-cut the web.
2. Holes in web should be cut with a sharp saw.
3. For rectangular holes, avoid over-cutting the corners, as this can cause unnecessary stress concentrations. Slightly rounding the corners is recommended. Starting the rectangular hole by drilling a 1-inch-diameter hole in each of the four corners and then making the cuts between the holes is another good method to minimize damage to the I-joist.

DUCT CHASE OPENINGS

Rules for Cutting Duct Chase Openings in I-joists

1. The distance between the inside edge of the support and the centreline of a duct chase opening shall be in compliance with the requirements of Table 6.2.
2. I-joist top and bottom flanges must never be cut, notched or otherwise modified.
3. The maximum depth of a duct chase opening that can be cut into an I-joist web shall equal the clear distance between the flanges of the I-joist minus 1/4 inch. A minimum of 1/8 inch should always be maintained between the top or bottom of the opening and the adjacent I-joist flange.
4. All openings shall be cut in accordance with the restrictions listed above and as illustrated in detail 6b.
5. Limit one maximum-size duct chase opening per span.



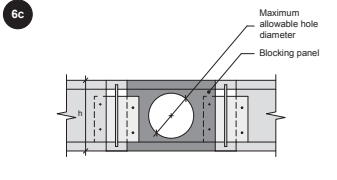
Notes:

1. Never drill, cut or notch the flange, or over-cut the web.
2. Holes in web should be cut with a sharp saw.
3. Avoid over-cutting the corners, as this can cause unnecessary stress concentrations. Slightly rounding the corners is recommended. Starting the rectangular hole by drilling a 1-inch-diameter hole in each of the four corners and then making the cuts between the holes is another good method to minimize damage to the I-joist.

HOLES IN BLOCKING PANELS

Maximum Allowable Hole Size in Lateral-restraint-only Blocking Panels

1. The maximum allowable hole size for a lateral-restraint-only blocking panel is 2/3 of the lesser dimension of the blocking's depth or length. Assuming the blocking panel is longer than its height (or depth), the table aside applies. For other applications, contact Nordic Structures.
2. Holes cut into the blocking panels are subject to the following limitations:
 - The top and bottom flanges of an I-joist blocking panel must never be cut, notched or otherwise modified.
 - Field-cut holes must be centred in the blocking horizontally.
 - While round holes are preferred, rectangle holes may be used provided the corners are not over cut. Slightly rounding corners or pre-drilling corners with a 1-inch-diameter bit is recommended.
- All holes must be cut in a workman-like manner in accordance with the limitations listed above.



I-joist or rim board blocking depth (in.)	Maximum allowable hole diameter (in.) ^(a)
9-1/2	6-1/4
11-7/8	7-3/4
14	10-3/4
16	10-1/2

^(a) Maximum allowable hole diameter in blocking panel, where the blocking panel is longer than its height.

TABLE 6.1 - LOCATION OF WEB HOLES

Simple or multiple span		Minimum distance from inside face of any support to centre of hole (ft.-in.)																
Joist depth	Joist series	2	3	4	5	6	6-1/4	7	8	8-5/8	9	10	10-3/4	11	12	12-3/4		
9-1/2"	NI-20	0'-7"	1'-6"	2'-10"	4'-3"	5'-8"	6'-0"	-	-	-	-	-	-	-	-	-		
	NI-40x	0'-7"	1'-6"	3'-0"	4'-4"	6'-0"	6'-4"	-	-	-	-	-	-	-	-	-		
	NI-60	1'-3"	2'-6"	4'-0"	5'-4"	7'-0"	7'-5"	-	-	-	-	-	-	-	-	-		
	NI-80	2'-3"	3'-6"	5'-0"	6'-6"	8'-2"	8'-8"	-	-	-	-	-	-	-	-	-		
11-7/8"	NI-20	0'-7"	0'-8"	1'-0"	2'-4"	3'-8"	4'-0"	5'-0"	6'-8"	7'-9"	-	-	-	-	-	-		
	NI-40x	0'-7"	0'-8"	1'-3"	2'-8"	4'-0"	4'-4"	5'-5"	7'-2"	8'-4"	-	-	-	-	-	-		
	NI-60	0'-7"	1'-8"	3'-0"	4'-3"	5'-9"	6'-0"	7'-3"	6'-10"	10'-0"	-	-	-	-	-	-		
	NI-80	1'-6"	2'-10"	4'-2"	5'-6"	7'-0"	7'-5"	8'-6"	10'-3"	11'-4"	-	-	-	-	-	-		
14"	NI-20	0'-7"	0'-8"	1'-5"	3'-2"	4'-10"	5'-4"	6'-9"	8'-9"	10'-2"	-	-	-	-	-	-		
	NI-40x	0'-7"	0'-8"	1'-0"	2'-4"	2'-9"	2'-9"	3'-9"	5'-2"	6'-0"	6'-6"	8'-3"	10'-2"	-	-	-		
	NI-60	0'-7"	0'-8"	1'-8"	3'-0"	4'-3"	4'-8"	5'-8"	7'-2"	8'-0"	8'-8"	10'-4"	11'-9"	-	-	-		
	NI-80	0'-10"	2'-0"	3'-4"	4'-9"	6'-2"	6'-5"	7'-6"	9'-0"	10'-0"	10'-8"	12'-4"	13'-9"	-	-	-		
16"	NI-20	0'-7"	0'-8"	0'-10"	2'-5"	4'-0"	4'-5"	5'-9"	7'-5"	8'-8"	9'-4"	11'-4"	12'-11"	-	-	-		
	NI-40x	0'-7"	0'-8"	0'-8"	1'-0"	2'-4"	2'-9"	3'-9"	5'-2"	6'-0"	6'-6"	8'-3"	10'-2"	-	-	-		
	NI-60	0'-7"	0'-8"	1'-8"	3'-0"	4'-3"	4'-8"	5'-8"	7'-2"	8'-0"	8'-8"	10'-4"	11'-9"	-	-	-		
	NI-80	0'-10"	2'-0"	3'-4"	4'-9"	6'-2"	6'-5"	7'-6"	9'-0"	10'-0"	10'-8"	12'-4"	13'-9"	-	-	-		
16"	NI-20	0'-7"	0'-8"	0'-8"	1'-6"	2'-10"	3'-2"	4'-2"	5'-8"	6'-4"	7'-0"	8'-5"	9'-8"	10'-2"	12'-2"	13'-9"		
	NI-40x	0'-7"	0'-8"	0'-8"	1'-6"	2'-10"	3'-2"	4'-2"	5'-8"	6'-4"	7'-0"	8'-5"	9'-8"	10'-2"	12'-2"	13'-9"		
	NI-60	0'-7"	1'-3"	2'-6"	3'-10"	5'-3"	5'-6"	6'-6"	8'-0"	9'-0"	9'-5"	11'-0"	12'-3"	12'-9"	14'-5"	16'-0"		
	NI-80	0'-7"	0'-8"	0'-8"	1'-8"	3'-3"	3'-8"	4'-9"	6'-5"	7'-5"	8'-0"	9'-10"	11'-3"	11'-9"	13'-5"	15'-4"		

Notes:

1. Tabulated values are applicable to residential floor construction meeting the above design criteria.
2. The above table is based on the I-joists being used at their maximum spans. The minimum distance as given above may be reduced for shorter spans; contact your local distributor.

Design Criteria

Joist spacing	Up to 24 inches
Loads	Live load = 40 psf and dead load = 15 psf
Deflection limits	L/480 under live load and L/240 under total load

TABLE



BUILDER: **GREEN PARK HOMES**
SITE: **TRINI GROUP DEVE.**
MODEL: **ROSE 9**
CITY: **RICHMOND HILL**

Job Name: **ROSE 9**
Level: **1ST FLR FRAMING**
Label: **B1 - i2356**
Type: **Beam**

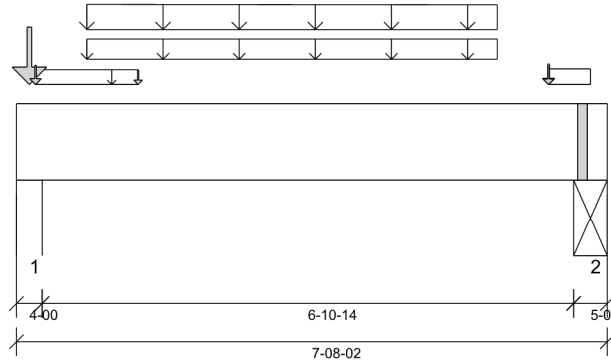
2 Ply Member
1 3/4" x 11 7/8" (2.0E 3100)
WestFraser LVL

Status:
Design Passed

Illustration Not to Scale. Pitch: 0/12

Designed by Single Member Design Engine in MiTek® Structure Version 8.5.3.233.Update5.15

Report Version: 2021.03.26 07/13/2023 15:12



DESIGN INFORMATION

Building Code: NBCC 2015, Part9, BCBC 2018, ABC 2019, OBC 2012 (2019 Amendment)

Design Methodology: LSD

Service Condition: Dry

LL Deflection Limit: L/372,

TL Deflection Limit: L/248,

Lateral Restraint Requirements:

Both ends of the member and the outer supports must be laterally restrained. Top and bottom edges of the member must be fully restrained or have the following maximum unbraced length:

Top: 0' Bottom: 1'- 1 1/2"

Factored Resistance of Support Material:

- 615 psi Wall @ 0'- 3"
- 615 psi Beam @ 7'- 3 7/8"

PLY TO PLY CONNECTION:
4 ROWS OF 3.25" PNEUMATIC GUN
NAILS (0.120"x3.25") @ 8" O/C

PLY TO PLY CONNECTION ASSUMES ANY
SUPPORTED BEAM HANGERS ARE FASTENED
TO THIS BEAM WITH MIN. 3.5" FASTENERS.

ANALYSIS RESULTS

Design Criteria	Location	Load Combination	LDF	Design	Limit	Result
Factored Pos. Moment:	4'- 2 15/16"	1.25D + 1.5L	1.00	3028 lb ft	35345 lb ft	Passed - 9%
Factored Shear:	6'- 3"	1.25D + 1.5L	1.00	1666 lb	13815 lb	Passed - 12%
Live Load (LL) Pos. Defl.:	3'- 9 5/8"	L		0.013"	L/372	Passed - L/999
Total Load (TL) Pos. Defl.:	3'- 9 5/8"	D + L		0.020"	L/248	Passed - L/999

SUPPORT AND REACTION INFORMATION

ID	Input Bearing Length	Controlling Load Combination	LDF	Factored Downward Reaction	Factored Uplift Reaction	Factored Resistance of Member	Factored Resistance of Support	Result
1	4'-00"	1.25D + 1.5L	1.00	3784 lb		14560 lb	8613 lb	Passed - 44%
2	5'-04"	1.25D + 1.5L	1.00	1708 lb		19110 lb	11301 lb	Passed - 15%

SPECIFIED LOADS

Type	Start Loc	End Loc	Source	Face	Dead (D)	Live (L)	Snow (S)	Wind (W)
Self Weight	0'	7'- 8 1/8"	Self Weight	Top	12 lb/ft	-	-	-
Uniform	0'- 2 15/16"	1'- 6 15/16"	FC1 Floor Decking (Plan View Fill)	Top	3 lb/ft	6 lb/ft	-	-
Uniform	0'- 10 15/16"	6'- 2 15/16"	Smoothed Load	Back	41 lb/ft	82 lb/ft	-	-
Uniform	6'- 10 15/16"	7'- 5 1/2"	FC1 Floor Decking (Plan View Fill)	Top	9 lb/ft	18 lb/ft	-	-
Tapered	0'- 10 15/16"	6'- 2 15/16"	Smoothed Load	Front	76 To 73 lb/ft	152 To 145 lb/ft	-	-
Point	0'- 2"	0'- 2"	B3(i2370)	Front	496 lb	950 lb	-	-
Point	6'- 10 15/16"	6'- 10 15/16"	J5(i2441)	Front	69 lb	138 lb	-	-
Point	0'- 2 15/16"	0'- 2 15/16"	J7(i2309)	Back	55 lb	109 lb	-	-
Point	6'- 10 15/16"	6'- 10 15/16"	J7(i2380)	Back	42 lb	72 lb	-	-
Point	1'- 6 15/16"	1'- 6 15/16"	FC1 Floor Decking (Plan View Fill)	Top	0 lb	0 lb	-	-

UNFACTORED REACTIONS

ID	Start Loc	End Loc	Source	Dead (D)	Live (L)	Snow (S)	Wind (W)
1	0'	0'- 4"	1(i47)	951 lb	1767 lb	-	-
2	7'- 2 7/8"	7'- 8 1/8"	STL BM(i57)	425 lb	747 lb	-	-

DESIGN NOTES

- The dead loads used in the design of this member were applied to the structure as sloped dead loads.
- Lateral stability factor (KL) was based on user preference to use the width of all plies. (Consult with manufacturer for guideline pertaining to this design option.)
- Analysis and Design has been performed using precision loading from actual modeled conditions. Some loads may have been modified to simplify reporting.
- Tributary Loads have been generated based on actual spacing between members in the model which may differ from the default system spacing. The actual loads applied to the member are shown in the Specified Loads table.
- Transfer reactions may differ from design results as allowed per building codes and standard load distribution practices.
- This report is based on modeled conditions input by the user. Source information for the loads and supports are provided for reference only. Verify that all loads and support conditions are correct.
- Review all loads and reactions to ensure that the member/bearing/connector/structure can resist adequately. Unless already specified on this report, anchorage for uplift reactions to be specified by others. Installation of member and accessories (if required) as per manufacturer's instruction.
- When the applied loads are coming from a member/post/wall above that does not sit directly on this beam, adequate load transfer elements, such as squash blocks, wall studs, or beveled plates are required to transfer the loads to this beam.

PLY TO PLY CONNECTION

- Member design assumed proper ply to ply connection by others. Fastener spacing along length of member must not exceed 4 times depth of member. Verify connection between plies according to code specification and follow the manufacturer's installation instruction. Loads assumed to be distributed equally to each ply.



STRUCTURAL COMPONENT ONLY
DWG # TF23070211

CITY OF RICHMOND HILL
BUILDING DIVISION
05/01/2024
RECEIVED
Per: joshua.nabua



BUILDER: **GREEN PARK HOMES**
SITE: **TRINI GROUP DEVE.**
MODEL: **ROSE 9**
CITY: **RICHMOND HILL**

Job Name: **ROSE 9**
Level: **1ST FLR FRAMING**
Label: **B2 - i2479**
Type: **Beam**

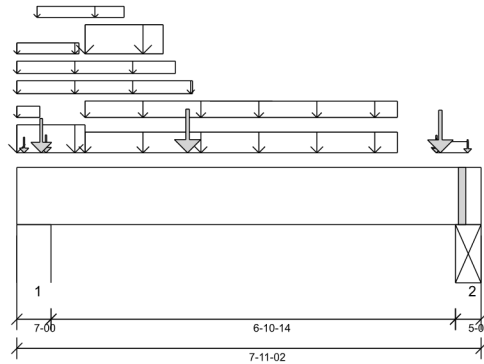
2 Ply Member
1 3/4" x 11 7/8" (2.0E 3100)
WestFraser LVL

Status:
Design Passed

Illustration Not to Scale. Pitch: 0/12

Designed by Single Member Design Engine in MiTek® Structure Version 8.5.3.233.Update5.15

Report Version: 2021.03.26 07/13/2023 15:12



DESIGN INFORMATION

Building Code: NBCC 2015, Part9, BCBC 2018, ABC 2019, OBC 2012 (2019 Amendment)
Design Methodology: LSD
Service Condition: Dry
LL Deflection Limit: L/372,
TL Deflection Limit: L/248,

Lateral Restraint Requirements:

Both ends of the member and the outer supports must be laterally restrained. Top and bottom edges of the member must be fully restrained or have the following maximum unbraced length:

Top: 0' Bottom: 1'- 1 1/2"

Factored Resistance of Support Material:

- 615 psi Wall @ 0'- 6"
- 615 psi Beam @ 7'- 6 7/8"

PLY TO PLY CONNECTION:

4 ROWS OF 3.25" PNEUMATIC GUN NAILS (0.120"x3.25") @ 8" O/C

PLY TO PLY CONNECTION ASSUMES ANY SUPPORTED BEAM HANGERS ARE FASTENED TO THIS BEAM WITH MIN. 3.5" FASTENERS.

ANALYSIS RESULTS

Design Criteria	Location	Load Combination	LDF	Design	Limit	Result
Factored Pos. Moment:	3'- 1 15/16"	1.25D + 1.5L	1.00	11145 lb ft	35345 lb ft	Passed - 32%
Factored Neg. Moment:	0'- 6"	1.25D + 1.5L	1.00	474 lb ft	35345 lb ft	Passed - 1%
Factored Shear:	1'- 6 7/8"	1.25D + 1.5L	1.00	5446 lb	13815 lb	Passed - 39%
Live Load (LL) Pos. Defl.:	3'- 11 1/16"	L		0.045"	L/372	Passed - L/999
Total Load (TL) Pos. Defl.:	3'- 10 15/16"	D + L		0.072"	L/248	Passed - L/999

SUPPORT AND REACTION INFORMATION

ID	Input Bearing Length	Controlling Load Combination	LDF	Factored Downward Reaction	Factored Uplift Reaction	Factored Resistance of Member	Factored Resistance of Support	Result
1	7-00	1.25D + 1.5L	1.00	10397 lb		25480 lb	15072 lb	Passed - 69%
2	5-04	1.25D + 1.5L	1.00	7139 lb		19110 lb	11301 lb	Passed - 63%

SPECIFIED LOADS

Type	Start Loc	End Loc	Source	Face	Dead (D)	Live (L)	Snow (S)	Wind (W)
Self Weight	0'	7'- 11 1/8"	Self Weight	Top	12 lb/ft	-	-	-
Uniform	0'	3'	15(i805)	Top	81 lb/ft	-	-	-
Uniform	0'	2'- 8 1/2"	15(i805)	Top	60 lb/ft	-	-	-
Uniform	0'	1'- 2"	15(i805)	Top	230 lb/ft	460 lb/ft	-	-
Uniform	0'	1'- 3/4"	15(i805)	Top	0 lb/ft	1 lb/ft	-	-
Uniform	0'	0'- 4 11/16"	15(i805)	Top	5 lb/ft	10 lb/ft	-	-
Uniform	0'- 4 1/8"	1'- 9 15/16"	FC1 Floor Decking (Plan View Fill)	Top	3 lb/ft	6 lb/ft	-	-
Uniform	1'- 1 15/16"	6'- 5 15/16"	Smoothed Load	Front	131 lb/ft	263 lb/ft	-	-
Uniform	1'- 2"	2'- 5 15/16"	15(i805)	Top	245 lb/ft	489 lb/ft	-	-
Uniform	7'- 1 15/16"	7'- 8 1/2"	FC1 Floor Decking (Plan View Fill)	Top	5 lb/ft	10 lb/ft	-	-
Tapered	1'- 1 15/16"	6'- 5 15/16"	Smoothed Load	Back	76 To 73 lb/ft	151 To 145 lb/ft	-	-
Point	0'- 5 15/16"	0'- 5 15/16"	J3(i2486)	Front	144 lb	288 lb	-	-
Point	7'- 1 15/16"	7'- 1 15/16"	J3(i2487)	Front	136 lb	272 lb	-	-
Point	0'- 5"	0'- 5"	B3(i2370)	Back	496 lb	950 lb	-	-
Point	7'- 1 15/16"	7'- 1 15/16"	J5(i2441)	Back	69 lb	138 lb	-	-
Point	0'- 1 1/2"	0'- 1 1/2"	15(i805)	Top	106 lb	182 lb	-	-
Point	2'- 11"	2'- 11"	15(i805)	Top	780 lb	1242 lb	-	-
Point	7'- 2 13/16"	7'- 2 13/16"	16(i806)	Top	801 lb	1153 lb	-	-
Point	7'- 8 3/8"	7'- 8 3/8"	8(i798)	Top	62 lb	77 lb	-	-

UNFACTORED REACTIONS

ID	Start Loc	End Loc	Source	Dead (D)	Live (L)	Snow (S)	Wind (W)
1	0'	0'- 7"	2(i48)	2813 lb	4529 lb	-	-
2	7'- 5 7/8"	7'- 11 1/8"	STL BM(i57)	1978 lb	3169 lb	-	-

DESIGN NOTES

- The dead loads used in the design of this member were applied to the structure as sloped dead loads.
- Lateral stability factor (KL) was based on user preference to use the width of all plies. (Consult with manufacturer for guideline pertaining to this design option.)
- Analysis and Design has been performed using precision loading from actual modeled conditions. Some loads may have been modified to simplify reporting.



STRUCTURAL COMPONENT ONLY
DWG # TF23070212

RECEIVED
Per: joshua.nabua
05/01/2024



BUILDER: **GREEN PARK HOMES**
SITE: **TRINI GROUP DEVE.**
MODEL: **ROSE 9**
CITY: **RICHMOND HILL**

Job Name: **ROSE 9**
Level: **1ST FLR FRAMING**
Label: **B2 - i2479**
Type: **Beam**

2 Ply Member
1 3/4" x 11 7/8" (2.0E 3100)
WestFraser LVL

Status:
**Design
Passed**

DESIGN NOTES

- Tributary Loads have been generated based on actual spacing between members in the model which may differ from the default system spacing. The actual loads applied to the member are shown in the Specified Loads table.
- Transfer reactions may differ from design results as allowed per building codes and standard load distribution practices.
- This report is based on modeled conditions input by the user. Source information for the loads and supports are provided for reference only. Verify that all loads and support conditions are correct.
- Review all loads and reactions to ensure that the member/bearing/connector/structure can resist adequately. Unless already specified on this report, anchorage for uplift reactions to be specified by others. Installation of member and accessories (if required) as per manufacturer's instruction.
- When the applied loads are coming from a member/post/wall above that does not sit directly on this beam, adequate load transfer elements, such as squash blocks, wall studs, or beveled plates are required to transfer the loads to this beam.
- Bearing capacity of member at support 1, 2 was verified for the effect of concentrated load applied near the support. At support 2. Required Load Area: L=1.500", W=3.500". LDF=1.00, Pf=2731 lb, Q'r=5460 lb, Result=50.01%.

PLY TO PLY CONNECTION

- Member design assumed proper ply to ply connection by others. Fastener spacing along length of member must not exceed 4 times depth of member. Verify connection between plies according to code specification and follow the manufacturer's installation instruction. Loads assumed to be distributed equally to each ply.



STRUCTURAL COMPONENT ONLY
DWG # TF23070213

CITY OF RICHMOND HILL
BUILDING DIVISION

05/01/2024

RECEIVED
Per: joshua.nabua



BUILDER: **GREEN PARK HOMES**
SITE: **TRINI GROUP DEVE.**
MODEL: **ROSE 9**
CITY: **RICHMOND HILL**

Job Name: **ROSE 9**
Level: **1ST FLR FRAMING**
Label: **B3 - i2370**
Type: **Beam**

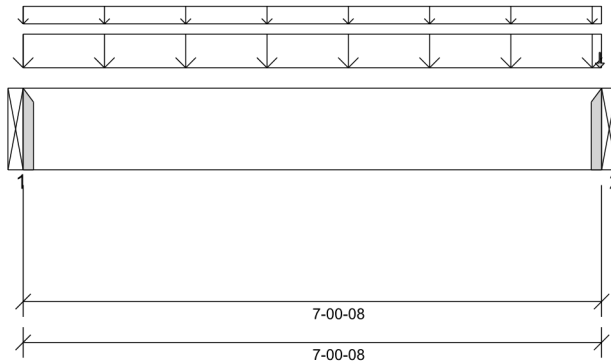
1 Ply Member
1 3/4" x 11 7/8" (2.0E 3100)
WestFraser LVL

Status:
Design Passed

Illustration Not to Scale. Pitch: 0/12

Designed by Single Member Design Engine in MiTek® Structure Version 8.5.3.233.Update5.15

Report Version: 2021.03.26 07/13/2023 15:12



DESIGN INFORMATION

Building Code: NBCC 2015, Part9, BCBC 2018, ABC 2019, OBC 2012 (2019 Amendment)

Design Methodology: LSD

Service Condition: Dry

LL Deflection Limit: L/372,

TL Deflection Limit: L/248,

Lateral Restraint Requirements:

Both ends of the member and the outer supports must be laterally restrained. Top and bottom edges of the member must be fully restrained or have the following maximum unbraced length:

Top: 0' Bottom: 7'- 1/2"

Factored Resistance of Support Material:

- 615 psi Beam @ 0'
- 615 psi Beam @ 7'- 1/2"

ANALYSIS RESULTS

Design Criteria	Location	Load Combination	LDF	Design	Limit	Result
Factored Pos. Moment:	3'- 6 1/4"	1.25D + 1.5L	1.00	3599 lb ft	17672 lb ft	Passed - 20%
Factored Shear:	6'- 5/8"	1.25D + 1.5L	1.00	1470 lb	6908 lb	Passed - 21%
Live Load (LL) Pos. Defl.:	3'- 6 1/4"	L		0.031"	L/372	Passed - L/999
Total Load (TL) Pos. Defl.:	3'- 6 1/4"	D + L		0.048"	L/248	Passed - L/999

SUPPORT AND REACTION INFORMATION

ID	Input Bearing Length	Controlling Load Combination	LDF	Factored Downward Reaction	Factored Uplift Reaction	Factored Resistance of Member	Factored Resistance of Support	Result
1	1-08	1.25D + 1.5L	1.00	2044 lb		2730 lb	-	Passed - 75%
2	1-08	1.25D + 1.5L	1.00	2044 lb		2730 lb	-	Passed - 75%

CONNECTOR INFORMATION

ID	Part No.	Manufacturer	Nailing Requirements			Other Information or Requirement for Reinforcement Accessories		
			Top	Face	Member			
1	HUS1.81/10		-	-	-	Connector manually specified by the user.		
2	HUS1.81/10		-	-	-	Connector manually specified by the user.		

* Connectors: Refer to manufacturer's specifications, fasteners requirements and installation instruction. Where header fasteners are longer than the width of the supporting member, install backer block or clinch header nails.

SPECIFIED LOADS

Type	Start Loc	End Loc	Source	Face	Dead (D)	Live (L)	Snow (S)	Wind (W)
Self Weight	0'	7'- 1/2"	Self Weight	Top	6 lb/ft	-	-	-
Uniform	0'	7'- 1/2"	User Load	Top	120 lb/ft	240 lb/ft	-	-
Uniform	0'	7'- 1/2"	FC1 Floor Decking (Plan View Fill)	Top	15 lb/ft	30 lb/ft	-	-
Point	7'- 1/4"	7'- 1/4"	FC1 Floor Decking (Plan View Fill)	Top	0 lb	0 lb	-	-

UNFACTORED REACTIONS

ID	Start Loc	End Loc	Source	Dead (D)	Live (L)	Snow (S)	Wind (W)
1	0'	0'	B2(i2479)	496 lb	950 lb	-	-
2	7'- 1/2"	7'- 1/2"	B1(i2356)	496 lb	950 lb	-	-

DESIGN NOTES

- The dead loads used in the design of this member were applied to the structure as sloped dead loads.
- Analysis and Design has been performed using precision loading from actual modeled conditions. Some loads may have been modified to simplify reporting.
- Tributary Loads have been generated based on actual spacing between members in the model which may differ from the default system spacing. The actual loads applied to the member are shown in the Specified Loads table.
- Transfer reactions may differ from design results as allowed per building codes and standard load distribution practices.
- This report is based on modeled conditions input by the user. Source information for the loads and supports are provided for reference only. Verify that all loads and support conditions are correct.
- Review all loads and reactions to ensure that the member/bearing/connector/structure can resist adequately. Unless already specified on this report, anchorage for uplift reactions to be specified by others. Installation of member and accessories (if required) as per manufacturer's instruction.
- When the applied loads are coming from a member/post/wall above that does not sit directly on this beam, adequate load transfer elements, such as squash blocks, wall studs, or beveled plates are required to transfer the loads to this beam.



STRUCTURAL COMPONENT ONLY
DWG # TF23070214

**CITY OF RICHMOND HILL
BUILDING DIVISION**

05/01/2024

RECEIVED
Per: joshua.nabua



BUILDER: **GREEN PARK HOMES**
SITE: **TRINI GROUP DEVE.**
MODEL: **ROSE 9**
CITY: **RICHMOND HILL**

Job Name: **ROSE 9**
Level: **1ST FLR FRAMING**
Label: **B4 - i2363**
Type: **Beam**

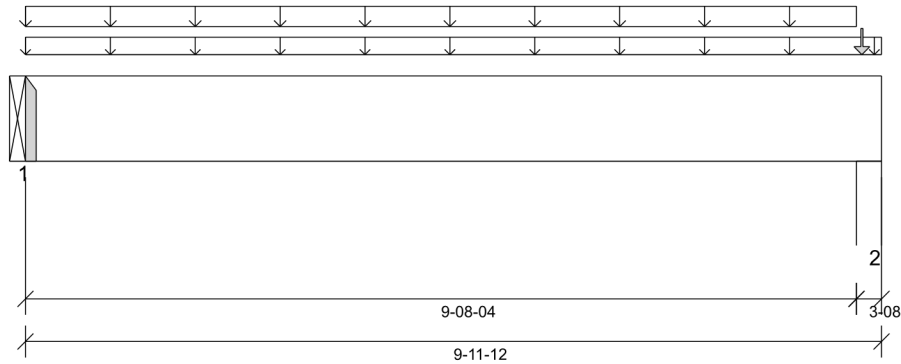
2 Ply Member
1 3/4" x 11 7/8" (2.0E 3100)
WestFraser LVL

Status:
Design Passed

Illustration Not to Scale. Pitch: 0/12

Designed by Single Member Design Engine in MiTek® Structure Version 8.5.3.233.Update5.15

Report Version: 2021.03.26 07/13/2023 15:12



DESIGN INFORMATION

Building Code: NBCC 2015, Part9, BCBC 2018, ABC 2019, OBC 2012 (2019 Amendment)

Design Methodology: LSD

Service Condition: Dry

LL Deflection Limit: L/372,

TL Deflection Limit: L/248,

Lateral Restraint Requirements:

Both ends of the member and the outer supports must be laterally restrained. Top and bottom edges of the member must be fully restrained or have the following maximum unbraced length:

Top: 0' Bottom: 9'- 8 1/4"

Factored Resistance of Support Material:

- 615 psi Beam @ 0'
- 615 psi Wall @ 9'- 9 1/4"

PLY TO PLY CONNECTION:
4 ROWS OF 3.25" PNEUMATIC GUN
NAILS (0.120"x3.25") @ 12" O/C

PLY TO PLY CONNECTION ASSUMES ANY
SUPPORTED BEAM HANGERS ARE FASTENED
TO THIS BEAM WITH MIN. 3.5" FASTENERS.

ANALYSIS RESULTS

Design Criteria	Location	Load Combination	LDF	Design	Limit	Result
Factored Pos. Moment:	4'- 10 5/8"	1.25D + 1.5L	0.65	1835 lb ft	23138 lb ft	Passed - 8%
Factored Shear:	0'- 11 7/8"	1.25D + 1.5L	0.65	599 lb	9044 lb	Passed - 7%
Total Load (TL) Pos. Defl.:	4'- 10 5/8"	D + L		0.026"	L/248	Passed - L/999

SUPPORT AND REACTION INFORMATION

ID	Input Bearing Length	Controlling Load Combination	LDF	Factored Downward Reaction	Factored Uplift Reaction	Factored Resistance of Member	Factored Resistance of Support	Result
1	1-08	1.25D + 1.5L	0.65	763 lb		3574 lb	-	Passed - 21%
2	3-08	1.25D + 1.5L	0.65	896 lb		8340 lb	4933 lb	Passed - 18%

CONNECTOR INFORMATION

ID	Part No.	Manufacturer	Nailing Requirements			Other Information or Requirement for Reinforcement Accessories		
			Top	Face	Member			
1	HUC412		-	-	-	Connector manually specified by the user.		

* Connectors: Refer to manufacturer's specifications, fasteners requirements and installation instruction. Where header fasteners are longer than the width of the supporting member, install backer block or clinch header nails.

SPECIFIED LOADS

Type	Start Loc	End Loc	Source	Face	Dead (D)	Live (L)	Snow (S)	Wind (W)
Self Weight	0'	9'- 11 3/4"	Self Weight	Top	12 lb/ft	-	-	-
Uniform	0'	9'- 11 3/4"	FC1 Floor Decking (Plan View Fill)	Top	9 lb/ft	18 lb/ft	-	-
Uniform	0'	9'- 8 1/4"	User Load	Top	80 lb/ft	-	-	-
Point	9'- 9"	9'- 9"	E3(i563)	Top	79 lb	29 lb	-	-

UNFACTORED REACTIONS

ID	Start Loc	End Loc	Source	Dead (D)	Live (L)	Snow (S)	Wind (W)
1	0'	0'	B5(i2454)	493 lb	95 lb	-	-
2	9'- 8 1/4"	9'- 11 3/4"	W2(i35)	573 lb	122 lb	-	-

DESIGN NOTES

- The dead loads used in the design of this member were applied to the structure as sloped dead loads.
- Lateral stability factor (KL) was based on user preference to use the width of all plies. (Consult with manufacturer for guideline pertaining to this design option.)
- Analysis and Design has been performed using precision loading from actual modeled conditions. Some loads may have been modified to simplify reporting.
- Tributary Loads have been generated based on actual spacing between members in the model which may differ from the default system spacing. The actual loads applied to the member are shown in the Specified Loads table.
- Transfer reactions may differ from design results as allowed per building codes and standard load distribution practices.
- This report is based on modeled conditions input by the user. Source information for the loads and supports are provided for reference only. Verify that all loads and support conditions are correct.
- Review all loads and reactions to ensure that the member/bearing/connector/structure can resist adequately. Unless already specified on this report, anchorage for uplift reactions to be specified by others. Installation of member and accessories (if required) as per manufacturer's instruction.
- When the applied loads are coming from a member/post/wall above that does not sit directly on this beam, adequate load transfer elements, such as squash blocks, wall studs, or beveled plates are required to transfer the loads to this beam.

PLY TO PLY CONNECTION

- Member design assumed proper ply to ply connection by others. Fastener spacing along length of member must not exceed 4 times depth of member. Verify connection between plies according to code specification and follow the manufacturer's installation instruction. Loads assumed to be distributed equally to each ply.



STRUCTURAL COMPONENT ONLY
DWG # TF23070215

05/01/2024

RECEIVED
Per: joshua.nabua



BUILDER: **GREEN PARK HOMES**
SITE: **TRINI GROUP DEVE.**
MODEL: **ROSE 9**
CITY: **RICHMOND HILL**

Job Name: **ROSE 9**
Level: **1ST FLR FRAMING**
Label: **B5 - i2454**
Type: **Beam**

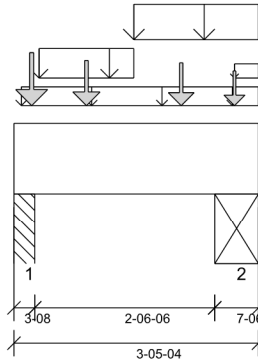
2 Ply Member
1 3/4" x 11 7/8" (2.0E 3100)
WestFraser LVL

Status:
Design Passed

Illustration Not to Scale. Pitch: 0/12

Designed by Single Member Design Engine in MiTek® Structure Version 8.5.3.233.Update5.15

Report Version: 2021.03.26 07/13/2023 15:12



DESIGN INFORMATION

Building Code: NBCC 2015, Part9, BCBC 2018, ABC 2019, OBC 2012 (2019 Amendment)

Design Methodology: LSD

Service Condition: Dry

LL Deflection Limit: L/372,

TL Deflection Limit: L/248,

Lateral Restraint Requirements:

Both ends of the member and the outer supports must be laterally restrained. Top and bottom edges of the member must be fully restrained or have the following maximum unbraced length:

Top: 0'- 1 1/4" Bottom: 1'- 1 1/2"

Factored Resistance of Support Material:

- 615 psi Column @ 0'- 2 1/2"
- 615 psi Beam @ 2'- 10 7/8"

PLY TO PLY CONNECTION:
4 ROWS OF 3.25" PNEUMATIC GUN
NAILS (0.120"x3.25") @ 4" O/C

PLY TO PLY CONNECTION ASSUMES ANY SUPPORTED BEAM HANGERS ARE FASTENED TO THIS BEAM WITH MIN. 3.5" FASTENERS.



STRUCTURAL COMPONENT ONLY
DWG # TF23070216

ANALYSIS RESULTS

Design Criteria	Location	Load Combination	LDF	Design	Limit	Result
Factored Pos. Moment:	1'- 5"	1.25D + 1.5L	1.00	1132 lb ft	35345 lb ft	Passed - 3%
Factored Neg. Moment:	2'- 10 7/8"	1.25D + 1.5L	1.00	231 lb ft	35345 lb ft	Passed - 1%
Factored Shear:	1'- 10"	1.25D + 1.5L	1.00	977 lb	13815 lb	Passed - 7%

SUPPORT AND REACTION INFORMATION

ID	Input Bearing Length	Controlling Load Combination	LDF	Factored Downward Reaction	Factored Uplift Reaction	Factored Resistance of Member	Factored Resistance of Support	Result
1	3'-08"	1.25D + 1.5L	1.00	2301 lb		12740 lb	7534 lb	Passed - 31%
2	7'-06"	1.25D + 1.5L	1.00	3018 lb		26857 lb	15882 lb	Passed - 19%

SPECIFIED LOADS

Type	Start Loc	End Loc	Source	Face	Dead (D)	Live (L)	Snow (S)	Wind (W)
Self Weight	0'	3'- 5 1/4"	Self Weight	Top	12 lb/ft	-	-	-
Uniform	0'- 1 1/4"	3'- 5 1/4"	13(i803)	Top	141 lb/ft	-	-	-
Uniform	0'- 4 1/4"	1'- 8 1/4"	13(i803)	Top	137 lb/ft	275 lb/ft	-	-
Uniform	3'- 1 1/4"	3'- 5 1/4"	FC1 Floor Decking (Plan View Fill)	Top	9 lb/ft	18 lb/ft	-	-
Tapered	1'- 8 1/4"	3'- 5 1/4"	13(i803)	Top	187 To 187 lb/ft	372 To 372 lb/ft	-	-
Point	0'- 3"	0'- 3"	B4(i2363)	Back	493 lb	95 lb	-	-
Point	1'- 1/4"	1'- 1/4"	J3(i2427)	Back	158 lb	315 lb	-	-
Point	2'- 4 1/4"	2'- 4 1/4"	J3(i2320)	Back	146 lb	292 lb	-	-
Point	3'- 1 1/4"	3'- 1 1/4"	J3DJ(i2393)	Back	106 lb	213 lb	-	-

UNFACTORED REACTIONS

ID	Start Loc	End Loc	Source	Dead (D)	Live (L)	Snow (S)	Wind (W)
1	0'	0'- 3 1/2"	PBO1(i65)	1059 lb	726 lb	-	-
2	2'- 9 7/8"	3'- 5 1/4"	STL BM(i58)	868 lb	1214 lb	-	-

DESIGN NOTES

- The dead loads used in the design of this member were applied to the structure as sloped dead loads.
- Lateral stability factor (KL) was based on user preference to use the width of all plies. (Consult with manufacturer for guideline pertaining to this design option.)
- Analysis and Design has been performed using precision loading from actual modeled conditions. Some loads may have been modified to simplify reporting.
- Tributary Loads have been generated based on actual spacing between members in the model which may differ from the default system spacing. The actual loads applied to the member are shown in the Specified Loads table.
- Transfer reactions may differ from design results as allowed per building codes and standard load distribution practices.
- This report is based on modeled conditions input by the user. Source information for the loads and supports are provided for reference only. Verify that all loads and support conditions are correct.
- Review all loads and reactions to ensure that the member/bearing/connector/structure can resist adequately. Unless already specified on this report, anchorage for uplift reactions to be specified by others. Installation of member and accessories (if required) as per manufacturer's instruction.
- When the applied loads are coming from a member/post/wall above that does not sit directly on this beam, adequate load transfer elements, such as squash blocks, wall studs, or beveled plates are required to transfer the loads to this beam.

PLY TO PLY CONNECTION

- Member design assumed proper ply to ply connection by others. Fastener spacing along length of member must not exceed 4 times depth of member. Verify connection between plies according to code specification and follow the manufacturer's installation instruction. Loads assumed to be distributed equally to each ply.

CITY OF RICHMOND HILL
BUILDING DIVISION
05/01/2024
RECEIVED
Per: joshua.nabua



BUILDER: **GREEN PARK HOMES**
SITE: **TRINI GROUP DEVE.**
MODEL: **ROSE 9**
CITY: **RICHMOND HILL**

Job Name: **ROSE 9**
Level: **1ST FLR FRAMING**
Label: **B6 - i2472**
Type: **Beam**

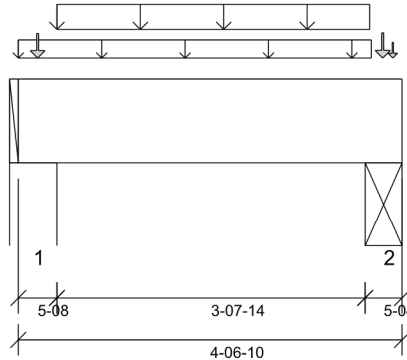
1 Ply Member
1 3/4" x 11 7/8" (2.0E 3100)
WestFraser LVL

Status:
Design Passed

Illustration Not to Scale. Pitch: 0/12

Designed by Single Member Design Engine in MiTek® Structure Version 8.5.3.233.Update5.15

Report Version: 2021.03.26 07/13/2023 15:12



DESIGN INFORMATION

Building Code: NBCC 2015, Part9, BCBC 2018, ABC 2019, OBC 2012 (2019 Amendment)

Design Methodology: LSD

Service Condition: Dry

LL Deflection Limit: L/372,

TL Deflection Limit: L/248,

Lateral Restraint Requirements:

Both ends of the member and the outer supports must be laterally restrained. Top and bottom edges of the member must be fully restrained or have the following maximum unbraced length:

Top: 0' Bottom: 3'- 7 7/8"

Factored Resistance of Support Material:

- 615 psi Wall @ 0'- 4 1/2"
- 615 psi Beam @ 4'- 2 3/8"

ANALYSIS RESULTS

Design Criteria	Location	Load Combination	LDF	Design	Limit	Result
Factored Pos. Moment:	2'- 3 1/2"	1.25D + 1.5L	1.00	580 lb ft	17672 lb ft	Passed - 3%
Factored Shear:	1'- 5 3/8"	1.25D + 1.5L	1.00	456 lb	6908 lb	Passed - 7%

SUPPORT AND REACTION INFORMATION

ID	Input Bearing Length	Controlling Load Combination	LDF	Factored Downward Reaction	Factored Uplift Reaction	Factored Resistance of Member	Factored Resistance of Support	Result
1	5-08	1.25D + 1.5L	1.00	773 lb		10010 lb	5921 lb	Passed - 13%
2	5-04	1.25D + 1.5L	1.00	765 lb		9555 lb	5650 lb	Passed - 14%

SPECIFIED LOADS

Type	Start Loc	End Loc	Source	Face	Dead (D)	Live (L)	Snow (S)	Wind (W)
Self Weight	0'	4'- 6 5/8"	Self Weight	Top	6 lb/ft	-	-	-
Uniform	-0'	4'- 2 1/4"	FC1 Floor Decking (Plan View Fill)	Top	16 lb/ft	32 lb/ft	-	-
Uniform	0'- 5 1/2"	4'- 2 1/16"	User Load	Back	60 lb/ft	120 lb/ft	-	-
Point	0'- 2 3/4"	0'- 2 3/4"	5(i793)	Top	40 lb	56 lb	-	-
Point	4'- 3 7/8"	4'- 3 7/8"	13(i803)	Top	48 lb	54 lb	-	-
Point	4'- 5 5/16"	4'- 5 5/16"	FC1 Floor Decking (Plan View Fill)	Top	0 lb	1 lb	-	-

UNFACTORED REACTIONS

ID	Start Loc	End Loc	Source	Dead (D)	Live (L)	Snow (S)	Wind (W)
1	0'	0'- 5 1/2"	W24(i45)	205 lb	357 lb	-	-
2	4'- 1 3/8"	4'- 6 5/8"	STL BM(i58)	199 lb	332 lb	-	-

DESIGN NOTES

- The dead loads used in the design of this member were applied to the structure as sloped dead loads.
- Analysis and Design has been performed using precision loading from actual modeled conditions. Some loads may have been modified to simplify reporting.
- Tributary Loads have been generated based on actual spacing between members in the model which may differ from the default system spacing. The actual loads applied to the member are shown in the Specified Loads table.
- Transfer reactions may differ from design results as allowed per building codes and standard load distribution practices.
- This report is based on modeled conditions input by the user. Source information for the loads and supports are provided for reference only. Verify that all loads and support conditions are correct.
- Review all loads and reactions to ensure that the member/bearing/connector/structure can resist adequately. Unless already specified on this report, anchorage for uplift reactions to be specified by others. Installation of member and accessories (if required) as per manufacturer's instruction.
- When the applied loads are coming from a member/post/wall above that does not sit directly on this beam, adequate load transfer elements, such as squash blocks, wall studs, or beveled plates are required to transfer the loads to this beam.



STRUCTURAL COMPONENT ONLY
DWG # TF23070217

CITY OF RICHMOND HILL
BUILDING DIVISION

05/01/2024

RECEIVED
Per: joshua.nabua



BUILDER: **GREEN PARK HOMES**
SITE: **TRINI GROUP DEVE.**
MODEL: **ROSE 9**
CITY: **RICHMOND HILL**

Job Name: **ROSE 9**
Level: **2ND FLR FRAMING**
Label: **B7 - i2201**
Type: **Beam**

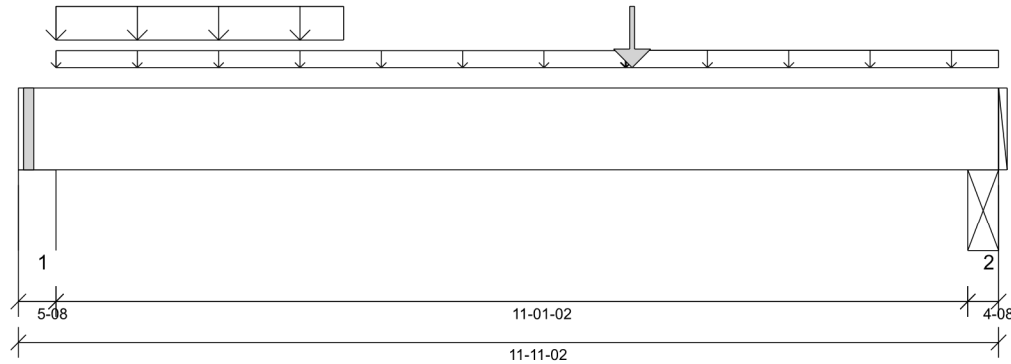
2 Ply Member
1 3/4" x 11 7/8" (2.0E 3100)
WestFraser LVL

Status:
Design Passed

Illustration Not to Scale. Pitch: 0/12

Designed by Single Member Design Engine in MiTek® Structure Version 8.5.3.233.Update5.15

Report Version: 2021.03.26 07/13/2023 15:12



DESIGN INFORMATION

Building Code: NBCC 2015, Part9, BCBC 2018, ABC 2019, OBC 2012 (2019 Amendment)

Design Methodology: LSD

Service Condition: Dry

LL Deflection Limit: L/372,

TL Deflection Limit: L/248,

Lateral Restraint Requirements:

Both ends of the member and the outer supports must be laterally restrained. Top and bottom edges of the member must be fully restrained or have the following maximum unbraced length:

Top: 0' Bottom: 6'- 11 1/4"

Factored Resistance of Support Material:

- 615 psi Wall @ 0'- 4 1/2"
- 615 psi Beam @ 11'- 7 5/8"

PLY TO PLY CONNECTION:
4 ROWS OF 3.25" PNEUMATIC GUN
NAILS (0.120"x3.25") @ 12" O/C

PLY TO PLY CONNECTION ASSUMES ANY
SUPPORTED BEAM HANGERS ARE FASTENED
TO THIS BEAM WITH MIN. 3.5" FASTENERS.



STRUCTURAL COMPONENT ONLY
DWG # TF23070218

ANALYSIS RESULTS

Design Criteria	Location	Load Combination	LDF	Design	Limit	Result
Factored Pos. Moment:	6'- 11 11/16"	1.25D + 1.5L	1.00	4576 lb ft	35345 lb ft	Passed - 13%
Factored Shear:	1'- 5 3/8"	1.25D + 1.5L	1.00	1968 lb	13815 lb	Passed - 14%
Live Load (LL) Pos. Defl.:	5'- 10 7/8"	L		0.050"	L/372	Passed - L/999
Total Load (TL) Pos. Defl.:	5'- 11 1/16"	D + L		0.081"	L/248	Passed - L/999

SUPPORT AND REACTION INFORMATION

ID	Input Bearing Length	Controlling Load Combination	LDF	Factored Downward Reaction	Factored Uplift Reaction	Factored Resistance of Member	Factored Resistance of Support	Result
1	5-08	1.25D + 1.5L	1.00	2182 lb		20020 lb	11843 lb	Passed - 18%
2	4-08	1.25D + 1.5L	1.00	1267 lb		16380 lb	9689 lb	Passed - 13%

SPECIFIED LOADS

Type	Start Loc	End Loc	Source	Face	Dead (D)	Live (L)	Snow (S)	Wind (W)
Self Weight	0'	11'- 11 1/8"	Self Weight	Top	12 lb/ft	-	-	-
Uniform	0'- 5 1/2"	7'- 4 3/4"	FC2 Floor Decking (Plan View Fill)	Top	11 lb/ft	21 lb/ft	-	-
Uniform	0'- 5 1/2"	3'- 11 1/2"	User Load	Back	120 lb/ft	240 lb/ft	-	-
Uniform	7'- 4 3/4"	11'- 11 1/8"	FC2 Floor Decking (Plan View Fill)	Top	13 lb/ft	27 lb/ft	-	-
Point	7'- 5 5/8"	7'- 5 5/8"	B12(i2047)	Back	236 lb	415 lb	-	-

UNFACTORED REACTIONS

ID	Start Loc	End Loc	Source	Dead (D)	Live (L)	Snow (S)	Wind (W)
1	0'	0'- 5 1/2"	15(i805)	575 lb	986 lb	-	-
2	11'- 6 5/8"	11'- 11 1/8"	BBO DR(i2186)	357 lb	538 lb	-	-

DESIGN NOTES

- The dead loads used in the design of this member were applied to the structure as sloped dead loads.
- Lateral stability factor (KL) was based on user preference to use the width of all plies. (Consult with manufacturer for guideline pertaining to this design option.)
- Analysis and Design has been performed using precision loading from actual modeled conditions. Some loads may have been modified to simplify reporting.
- Tributary Loads have been generated based on actual spacing between members in the model which may differ from the default system spacing. The actual loads applied to the member are shown in the Specified Loads table.
- Transfer reactions may differ from design results as allowed per building codes and standard load distribution practices.
- This report is based on modeled conditions input by the user. Source information for the loads and supports are provided for reference only. Verify that all loads and support conditions are correct.
- Review all loads and reactions to ensure that the member/bearing/connector/structure can resist adequately. Unless already specified on this report, anchorage for uplift reactions to be specified by others. Installation of member and accessories (if required) as per manufacturer's instruction.
- When the applied loads are coming from a member/post/wall above that does not sit directly on this beam, adequate load transfer elements, such as squash blocks, wall studs, or beveled plates are required to transfer the loads to this beam.

PLY TO PLY CONNECTION

- Member design assumed proper ply to ply connection by others. Fastener spacing along length of member must not exceed 4 times depth of member. Verify connection between plies according to code specification and follow the manufacturer's installation instruction. Loads assumed to be distributed equally to each ply.

CITY OF RICHMOND HILL
BUILDING DIVISION

05/01/2024

RECEIVED
Per: joshua.nabua



BUILDER: **GREEN PARK HOMES**
SITE: **TRINI GROUP DEVE.**
MODEL: **ROSE 9**
CITY: **RICHMOND HILL**

Job Name: **ROSE 9**
Level: **2ND FLR FRAMING**
Label: **B11 DR - i2173**
Type: **Beam**

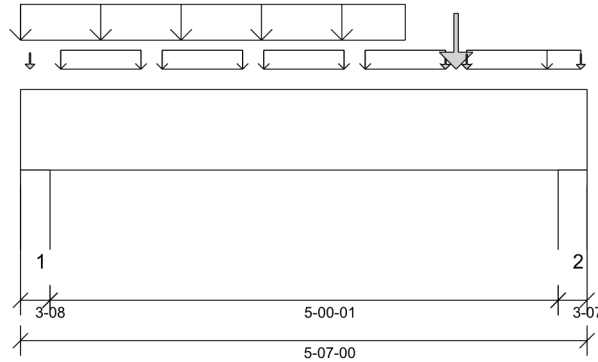
3 Ply Member
1 3/4" x 9 1/2" (2.0E 3100)
WestFraser LVL

Status:
Design Passed

Illustration Not to Scale. Pitch: 0/12

Designed by Single Member Design Engine in MiTek® Structure Version 8.5.3.233.Update5.15

Report Version: 2021.03.26 07/13/2023 15:12



DESIGN INFORMATION

Building Code: NBCC 2015, Part9, BCBC 2018, ABC 2019, OBC 2012 (2019 Amendment)

Design Methodology: LSD

Service Condition: Dry

LL Deflection Limit: L/372,

TL Deflection Limit: L/248,

Lateral Restraint Requirements:

Both ends of the member and the outer supports must be laterally restrained. Top and bottom edges of the member must be fully restrained or have the following maximum unbraced length:

Top: 1'- 1 1/2" Bottom: 5'- 7"

Factored Resistance of Support Material:

- 812 psi Wall @ 0'- 2 1/2"
- 812 psi Wall @ 5'- 4 9/16"

PLY TO PLY CONNECTION:

3 ROWS OF 3.25" PNEUMATIC GUN NAILS (0.120"x3.25") @ 6" O/C

NAIL FROM BOTH FACES (STAGGER 1/2 SPACE)

PLY TO PLY CONNECTION ASSUMES ANY SUPPORTED BEAM HANGERS ARE FASTENED TO THIS BEAM WITH MIN. 3.5" FASTENERS.

ANALYSIS RESULTS

Design Criteria	Location	Load Combination	LDF	Design	Limit	Result
Factored Pos. Moment:	2'- 10 3/4"	1.25D + 1.5L	1.00	2129 lb ft	34949 lb ft	Passed - 6%
Factored Shear:	4'- 6 1/16"	1.25D + 1.5L	1.00	1330 lb	16578 lb	Passed - 8%
Total Load (TL) Pos. Defl.:	2'- 9 9/16"	D + L		0.010"	L/248	Passed - L/999

SUPPORT AND REACTION INFORMATION

ID	Input Bearing Length	Controlling Load Combination	LDF	Factored Downward Reaction	Factored Uplift Reaction	Factored Resistance of Member	Factored Resistance of Support	Result
1	3-08	1.25D + 1.5L	1.00	1916 lb		19110 lb	14920 lb	Passed - 13%
2	3-07	1.25D + 1.5L	1.00	1451 lb		18655 lb	14565 lb	Passed - 10%

SPECIFIED LOADS

Type	Start Loc	End Loc	Source	Face	Dead (D)	Live (L)	Snow (S)	Wind (W)
Self Weight	0'	5'- 7"	Self Weight	Top	14 lb/ft	-	-	-
Uniform	0'	3'- 9 1/2"	Smoothed Load	Top	146 lb/ft	264 lb/ft	-	-
Uniform	0'- 4 3/4"	1'- 2 1/4"	Bk1(i2146)	Top	65 lb/ft	11 lb/ft	-	-
Uniform	1'- 4 3/4"	2'- 2 1/4"	Bk1(i2143)	Top	65 lb/ft	11 lb/ft	-	-
Uniform	2'- 4 3/4"	3'- 2 1/4"	Bk1(i2149)	Top	65 lb/ft	11 lb/ft	-	-
Uniform	3'- 4 3/4"	4'- 2 1/4"	Bk1(i2129)	Top	65 lb/ft	11 lb/ft	-	-
Uniform	4'- 4 3/4"	5'- 6 1/4"	Bk1(i2128)	Top	65 lb/ft	11 lb/ft	-	-
Point	0'- 1 1/8"	0'- 1 1/8"	Bk1(i2142)	Top	12 lb	2 lb	-	-
Point	4'- 2 1/4"	4'- 2 1/4"	Bk1(i2129)	Top	1 lb	1 lb	-	-
Point	4'- 3 1/2"	4'- 3 1/2"	J3(i1920)	Top	158 lb	290 lb	-	-
Point	4'- 4 3/4"	4'- 4 3/4"	Bk1(i2128)	Top	1 lb	1 lb	-	-
Point	5'- 6 1/4"	5'- 6 1/4"	Bk1(i2128)	Top	1 lb	1 lb	-	-

UNFACTORED REACTIONS

ID	Start Loc	End Loc	Source	Dead (D)	Live (L)	Snow (S)	Wind (W)
1	0'	0'- 3 1/2"	7(i797)	592 lb	771 lb	-	-
2	5'- 3 9/16"	5'- 7"	8(i798)	492 lb	570 lb	-	-

DESIGN NOTES

- The dead loads used in the design of this member were applied to the structure as sloped dead loads.
- Lateral stability factor (KL) was based on user preference to use the width of all plies. (Consult with manufacturer for guideline pertaining to this design option.)
- Analysis and Design has been performed using precision loading from actual modeled conditions. Some loads may have been modified to simplify reporting.
- Tributary Loads have been generated based on actual spacing between members in the model which may differ from the default system spacing. The actual loads applied to the member are shown in the Specified Loads table.
- Transfer reactions may differ from design results as allowed per building codes and standard load distribution practices.
- This report is based on modeled conditions input by the user. Source information for the loads and supports are provided for reference only. Verify that all loads and support conditions are correct.
- Review all loads and reactions to ensure that the member/bearing/connector/structure can resist adequately. Unless already specified on this report, anchorage for uplift reactions to be specified by others. Installation of member and accessories (if required) as per manufacturer's instruction.
- When the applied loads are coming from a member/post/wall above that does not sit directly on this beam, adequate load transfer elements, such as squash blocks, wall studs, or beveled plates are required to transfer the loads to this beam.

PLY TO PLY CONNECTION

- Member design assumed proper ply to ply connection by others. Fastener spacing along length of member must not exceed 4 times depth of member. Verify connection between plies according to code specification and follow the manufacturer's installation instruction. Loads assumed to be distributed equally to each ply.



STRUCTURAL COMPONENT ONLY
DWG # TF23070219

CITY OF RICHMOND HILL

Engineering Division

05/01/2024

RECEIVED
Per: joshua.nabua



BUILDER: **GREEN PARK HOMES**
SITE: **TRINI GROUP DEVE.**
MODEL: **ROSE 9**
CITY: **RICHMOND HILL**

Job Name: **ROSE 9**
Level: **2ND FLR FRAMING**
Label: **B12 - i2047**
Type: **Beam**

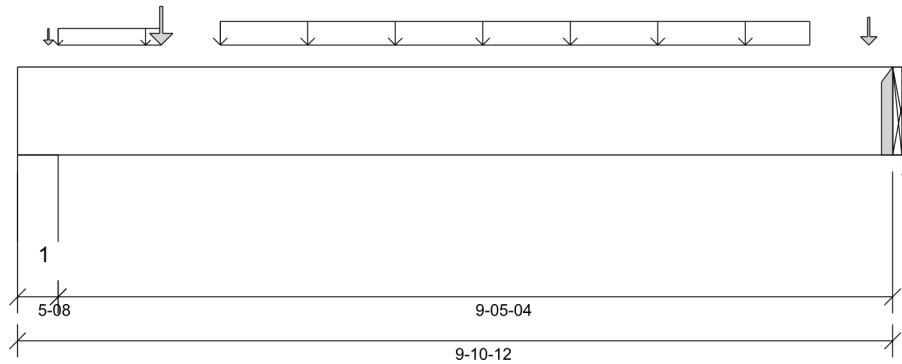
1 Ply Member
1 3/4" x 11 7/8" (2.0E 3100)
WestFraser LVL

Status:
**Design
Passed**

Illustration Not to Scale. Pitch: 0/12

Designed by Single Member Design Engine in MiTek® Structure Version
8.5.3.233.Update5.15

Report Version: 2021.03.26 07/13/2023 15:12



DESIGN INFORMATION

Building Code: NBCC 2015, Part9, BCBC 2018,
ABC 2019, OBC 2012 (2019
Amendment)

Design Methodology: LSD

Service Condition: Dry

LL Deflection Limit: L/372,

TL Deflection Limit: L/248,

Lateral Restraint Requirements:

Both ends of the member and the outer supports
must be laterally restrained. Top and bottom edges
of the member must be fully restrained or have the
following maximum unbraced length:

Top: 0' Bottom: 1'- 1 1/2"

Factored Resistance of Support Material:

- 615 psi Wall @ 0'- 4 1/2"
- 615 psi Beam @ 9'- 10 3/4"

ANALYSIS RESULTS

Design Criteria	Location	Load Combination	LDF	Design	Limit	Result
Factored Pos. Moment:	5'- 7 1/2"	1.25D + 1.5L	1.00	2199 lb ft	17672 lb ft	Passed - 12%
Factored Shear:	1'- 5 3/8"	1.25D + 1.5L	1.00	860 lb	6908 lb	Passed - 12%
Live Load (LL) Pos. Defl.:	5'- 1 7/16"	L		0.034"	L/372	Passed - L/999
Total Load (TL) Pos. Defl.:	5'- 1 7/16"	D + L		0.054"	L/248	Passed - L/999

SUPPORT AND REACTION INFORMATION

ID	Input Bearing Length	Controlling Load Combination	LDF	Factored Downward Reaction	Factored Uplift Reaction	Factored Resistance of Member	Factored Resistance of Support	Result
1	5-08	1.25D + 1.5L	1.00	879 lb		10010 lb	5921 lb	Passed - 15%
2	1-08	1.25D + 1.5L	1.00	913 lb		2730 lb	-	Passed - 33%

CONNECTOR INFORMATION

ID	Part No.	Manufacturer	Nailing Requirements			Other Information or Requirement for Reinforcement Accessories
			Top	Face	Member	
2	HUS1.81/10		-	-	-	Connector manually specified by the user.
* Connectors: Refer to manufacturer's specifications, fasteners requirements and installation instruction. Where header fasteners are longer than the width of the supporting member, install backer block or clinch header nails.						

SPECIFIED LOADS

Type	Start Loc	End Loc	Source	Face	Dead (D)	Live (L)	Snow (S)	Wind (W)
Self Weight	0'	9'- 10 3/4"	Self Weight	Top	6 lb/ft	-	-	-
Uniform	0'- 5 1/2"	1'- 7 1/2"	FC2 Floor Decking (Plan View Fill)	Top	2 lb/ft	3 lb/ft	-	-
Tapered	2'- 3 1/2"	8'- 11 1/2"	Smoothed Load	Back	44 lb/ft	86 To 87 lb/ft	-	-
Point	1'- 7 1/2"	1'- 7 1/2"	J6(i1955)	Back	75 lb	150 lb	-	-
Point	9'- 7 1/2"	9'- 7 1/2"	J6(i1954)	Back	38 lb	76 lb	-	-
Point	0'- 4 3/16"	0'- 4 3/16"	FC2 Floor Decking (Plan View Fill)	Top	0 lb	1 lb	-	-

UNFACTORED REACTIONS

ID	Start Loc	End Loc	Source	Dead (D)	Live (L)	Snow (S)	Wind (W)
1	0'	0'- 5 1/2"	5(i793)	228 lb	393 lb	-	-
2	9'- 10 3/4"	9'- 10 3/4"	B7(i2201)	236 lb	415 lb	-	-

DESIGN NOTES

- The dead loads used in the design of this member were applied to the structure as sloped dead loads.
- Analysis and Design has been performed using precision loading from actual modeled conditions. Some loads may have been modified to simplify reporting.
- Tributary Loads have been generated based on actual spacing between members in the model which may differ from the default system spacing. The actual loads applied to the member are shown in the Specified Loads table.
- Transfer reactions may differ from design results as allowed per building codes and standard load distribution practices.
- This report is based on modeled conditions input by the user. Source information for the loads and supports are provided for reference only. Verify that all loads and support conditions are correct.
- Review all loads and reactions to ensure that the member/bearing/connector/structure can resist adequately. Unless already specified on this report, anchorage for uplift reactions to be specified by others. Installation of member and accessories (if required) as per manufacturer's instruction.
- When the applied loads are coming from a member/post/wall above that does not sit directly on this beam, adequate load transfer elements, such as squash blocks, wall studs, or beveled plates are required to transfer the loads to this beam.



STRUCTURAL COMPONENT ONLY
DWG # TF23070220

CITY OF RICHMOND HILL
BUILDING DIVISION
05/01/2024
RECEIVED
Per: joshua.nabua

Maximum Floor Spans – S2.1

Design Criteria

Spans:	Simple span
Loads:	Live load = 40 psf and dead load = 15 psf
Deflection limits:	L/480 under live load and L/240 under total load
Sheathing:	5/8 in. nailed-glued oriented strand board (OSB) sheathing

Maximum Floor Spans

Joist depth	Joist series	Bare On centre spacing				1/2 in. gypsum ceiling On centre spacing			
		12"	16"	19.2"	24"	12"	16"	19.2"	24"
9-1/2"	NI-20	15'-1"	14'-3"	13'-10"	-	15'-7"	14'-9"	14'-3"	-
	NI-40x	16'-2"	15'-3"	14'-8"	-	16'-7"	15'-8"	15'-1"	-
	NI-60	16'-4"	15'-4"	14'-10"	-	16'-9"	15'-9"	15'-3"	-
	NI-80	17'-3"	16'-3"	15'-8"	-	17'-8"	16'-7"	16'-0"	-
11-7/8"	NI-20	17'-0"	16'-0"	15'-6"	-	17'-6"	16'-7"	16'-0"	-
	NI-40x	18'-2"	17'-1"	16'-6"	-	18'-9"	17'-6"	16'-11"	-
	NI-60	18'-5"	17'-3"	16'-8"	-	19'-0"	17'-8"	17'-1"	-
	NI-80	19'-9"	18'-3"	17'-7"	-	20'-4"	18'-10"	18'-0"	-
	NI-90	20'-2"	18'-8"	17'-10"	-	20'-9"	19'-2"	18'-4"	-
14"	NI-40x	20'-1"	18'-8"	17'-10"	-	20'-10"	19'-4"	18'-6"	-
	NI-60	20'-6"	18'-11"	18'-2"	-	21'-2"	19'-8"	18'-9"	-
	NI-80	21'-11"	20'-3"	19'-4"	-	22'-7"	20'-11"	20'-0"	-
	NI-90	22'-5"	20'-8"	19'-9"	-	23'-0"	21'-4"	20'-4"	-
16"	NI-60	22'-4"	20'-8"	19'-9"	-	23'-1"	21'-5"	20'-6"	-
	NI-80	23'-11"	22'-1"	21'-1"	-	24'-8"	22'-10"	21'-9"	-
	NI-90	24'-5"	22'-6"	21'-6"	-	25'-1"	23'-2"	22'-2"	-

Joist depth	Joist series	Mid-span blocking with 1x4 inch strap On centre spacing				Mid-span blocking and 1/2 in. gypsum ceiling On centre spacing			
		12"	16"	19.2"	24"	12"	16"	19.2"	24"
9-1/2"	NI-20	16'-8"	15'-3"	14'-5"	-	16'-8"	15'-3"	14'-5"	-
	NI-40x	17'-11"	17'-0"	16'-1"	-	18'-5"	17'-1"	16'-1"	-
	NI-60	18'-2"	17'-1"	16'-4"	-	18'-8"	17'-4"	16'-4"	-
	NI-80	19'-5"	18'-0"	17'-5"	-	19'-10"	18'-5"	17'-8"	-
11-7/8"	NI-20	19'-7"	18'-2"	17'-3"	-	19'-11"	18'-3"	17'-3"	-
	NI-40x	21'-1"	19'-7"	18'-8"	-	21'-8"	20'-2"	19'-2"	-
	NI-60	21'-4"	19'-9"	18'-11"	-	21'-11"	20'-5"	19'-6"	-
	NI-80	22'-9"	21'-1"	20'-2"	-	23'-3"	21'-8"	20'-8"	-
	NI-90	23'-3"	21'-6"	20'-6"	-	23'-9"	22'-0"	21'-0"	-
14"	NI-40x	23'-8"	21'-11"	20'-11"	-	24'-4"	22'-8"	21'-8"	-
	NI-60	24'-0"	22'-3"	21'-3"	-	24'-8"	22'-11"	21'-11"	-
	NI-80	25'-7"	23'-9"	22'-7"	-	26'-2"	24'-4"	23'-3"	-
	NI-90	26'-1"	24'-2"	23'-0"	-	26'-8"	24'-9"	23'-7"	-
16"	NI-60	26'-5"	24'-6"	23'-5"	-	27'-2"	25'-3"	24'-2"	-
	NI-80	28'-2"	26'-1"	24'-10"	-	28'-10"	26'-9"	25'-6"	-
	NI-90	28'-8"	26'-6"	25'-3"	-	29'-3"	27'-2"	25'-11"	-

Notes:

- The tabulated clear spans are based on CSA O86-14 and NBC 2015, and are applicable to residential floor construction meeting the above design criteria.
- For multiple-span applications, the end spans shall be 40% or more of the adjacent span.
- Minimum bearing length shall be 1-3/4 inch for end bearings, and 3-1/2 inches for intermediate bearings.
- Bearing stiffeners are not required when I-joists are used in accordance with this table, except as required for hangers.
- Nordic I-joists are listed in CCMC Evaluation Report 13032-R and APA Product Report PR-L274C.

Maximum Floor Spans – S4.1

Design Criteria

Spans:	Simple span
Loads:	Live load = 40 psf and dead load = 15 psf
Deflection limits:	L/480 under live load and L/240 under total load
Sheathing:	3/4 in. nailed-glued oriented strand board (OSB) sheathing

Maximum Floor Spans

Joist depth	Joist series	Bare On centre spacing				1/2 in. gypsum ceiling On centre spacing			
		12"	16"	19.2"	24"	12"	16"	19.2"	24"
9-1/2"	NI-20	15'-11"	15'-0"	14'-6"	13'-5"	16'-5"	15'-5"	14'-6"	13'-5"
	NI-40x	17'-0"	16'-0"	15'-5"	14'-10"	17'-5"	16'-5"	15'-10"	15'-2"
	NI-60	17'-2"	16'-2"	15'-7"	14'-11"	17'-7"	16'-7"	16'-0"	15'-4"
	NI-80	18'-3"	17'-1"	16'-5"	15'-9"	18'-8"	17'-5"	16'-9"	16'-1"
11-7/8"	NI-20	17'-11"	16'-11"	16'-3"	15'-8"	18'-7"	17'-5"	16'-10"	16'-2"
	NI-40x	19'-4"	17'-11"	17'-3"	16'-7"	19'-11"	18'-6"	17'-9"	17'-0"
	NI-60	19'-7"	18'-2"	17'-6"	16'-9"	20'-2"	18'-9"	17'-11"	17'-2"
	NI-80	21'-1"	19'-6"	18'-6"	17'-7"	21'-7"	20'-0"	19'-0"	18'-0"
	NI-90	21'-6"	19'-10"	18'-11"	17'-11"	22'-0"	20'-4"	19'-5"	18'-4"
14"	NI-40x	21'-5"	19'-11"	18'-11"	18'-0"	22'-1"	20'-7"	19'-7"	18'-7"
	NI-60	21'-10"	20'-2"	19'-3"	18'-3"	22'-6"	20'-10"	19'-11"	18'-10"
	NI-80	23'-5"	21'-7"	20'-7"	19'-5"	24'-0"	22'-3"	21'-2"	20'-0"
	NI-90	23'-10"	22'-1"	21'-0"	19'-10"	24'-5"	22'-7"	21'-6"	20'-4"
16"	NI-60	23'-9"	22'-0"	21'-0"	19'-10"	24'-6"	22'-9"	21'-8"	20'-7"
	NI-80	25'-6"	23'-7"	22'-5"	21'-2"	26'-2"	24'-3"	23'-1"	21'-10"
	NI-90	26'-0"	24'-0"	22'-10"	21'-6"	26'-7"	24'-8"	23'-5"	22'-2"

Joist depth	Joist series	Mid-span blocking with 1x4 inch strap On centre spacing				Mid-span blocking and 1/2 in. gypsum ceiling On centre spacing			
		12"	16"	19.2"	24"	12"	16"	19.2"	24"
9-1/2"	NI-20	16'-10"	15'-5"	14'-6"	13'-5"	16'-10"	15'-5"	14'-6"	13'-5"
	NI-40x	18'-8"	17'-2"	16'-3"	15'-2"	18'-10"	17'-2"	16'-3"	15'-2"
	NI-60	18'-11"	17'-6"	16'-6"	15'-5"	19'-2"	17'-6"	16'-6"	15'-5"
	NI-80	20'-3"	18'-10"	17'-11"	16'-10"	20'-8"	19'-3"	18'-2"	16'-10"
11-7/8"	NI-20	20'-1"	18'-5"	17'-5"	16'-2"	20'-1"	18'-5"	17'-5"	16'-2"
	NI-40x	21'-10"	20'-4"	19'-4"	17'-8"	22'-5"	20'-6"	19'-4"	17'-8"
	NI-60	22'-1"	20'-7"	19'-8"	18'-4"	22'-8"	20'-10"	19'-8"	18'-4"
	NI-80	23'-8"	22'-0"	20'-11"	19'-10"	24'-1"	22'-6"	21'-6"	20'-0"
	NI-90	24'-1"	22'-5"	21'-4"	20'-2"	24'-7"	22'-11"	21'-10"	20'-7"
14"	NI-40x	24'-5"	22'-9"	21'-9"	19'-5"	25'-1"	23'-2"	21'-9"	19'-5"
	NI-60	24'-10"	23'-2"	22'-1"	20'-10"	25'-6"	23'-8"	22'-4"	20'-10"
	NI-80	26'-6"	24'-8"	23'-6"	22'-2"	27'-1"	25'-3"	24'-1"	22'-9"
	NI-90	27'-0"	25'-1"	23'-11"	22'-7"	27'-6"	25'-8"	24'-6"	23'-2"
16"	NI-60	27'-3"	25'-5"	24'-3"	22'-11"	28'-0"	26'-2"	24'-9"	23'-1"
	NI-80	29'-1"	27'-1"	25'-9"	24'-4"	29'-8"	27'-9"	26'-5"	25'-0"
	NI-90	29'-7"	27'-6"	26'-2"	24'-9"	30'-2"	28'-2"	26'-10"	25'-5"

Notes:

- The tabulated clear spans are based on CSA O86-14 and NBC 2015, and are applicable to residential floor construction meeting the above design criteria.
- For multiple-span applications, the end spans shall be 40% or more of the adjacent span.
- Minimum bearing length shall be 1-3/4 inch for end bearings, and 3-1/2 inches for intermediate bearings.
- Bearing stiffeners are not required when I-joists are used in accordance with this table, except as required for hangers.
- Nordic I-joists are listed in CCMC Evaluation Report 13032-R and APA Product Report PR-L274C.

Maximum Floor Spans – S6.1

Design Criteria

Spans:	Simple span
Loads:	Live load = 40 psf and dead load = 15 psf
Deflection limits:	L/480 under live load and L/240 under total load
Sheathing:	5/8 in. nailed-glued Canadian softwood plywood

Maximum Floor Spans

Joist depth	Joist series	Bare On centre spacing				1/2 in. gypsum ceiling On centre spacing			
		12"	16"	19.2"	24"	12"	16"	19.2"	24"
9-1/2"	NI-20	14'-11"	14'-1"	13'-7"	-	15'-4"	14'-6"	14'-1"	-
	NI-40x	15'-11"	15'-0"	14'-6"	-	16'-4"	15'-5"	14'-11"	-
	NI-60	16'-1"	15'-2"	14'-8"	-	16'-6"	15'-7"	15'-1"	-
	NI-80	17'-1"	16'-1"	15'-6"	-	17'-5"	16'-5"	15'-10"	-
11-7/8"	NI-20	16'-9"	15'-10"	15'-4"	-	17'-4"	16'-4"	15'-10"	-
	NI-40x	17'-10"	16'-10"	16'-3"	-	18'-6"	17'-4"	16'-9"	-
	NI-60	18'-1"	17'-0"	16'-5"	-	18'-9"	17'-6"	16'-11"	-
	NI-80	19'-6"	18'-0"	17'-4"	-	20'-1"	18'-7"	17'-9"	-
	NI-90	19'-11"	18'-4"	17'-8"	-	20'-5"	18'-11"	18'-1"	-
14"	NI-40x	19'-10"	18'-4"	17'-8"	-	20'-6"	19'-1"	18'-3"	-
	NI-60	20'-2"	18'-8"	17'-11"	-	20'-10"	19'-4"	18'-6"	-
	NI-80	21'-8"	20'-0"	19'-1"	-	22'-4"	20'-8"	19'-9"	-
	NI-90	22'-1"	20'-5"	19'-6"	-	22'-9"	21'-0"	20'-1"	-
16"	NI-60	22'-0"	20'-4"	19'-6"	-	22'-9"	21'-1"	20'-2"	-
	NI-80	23'-7"	21'-10"	20'-10"	-	24'-4"	22'-6"	21'-6"	-
	NI-90	24'-1"	22'-2"	21'-2"	-	24'-9"	22'-11"	21'-10"	-

Joist depth	Joist series	Mid-span blocking with 1x4 inch strap On centre spacing				Mid-span blocking and 1/2 in. gypsum ceiling On centre spacing			
		12"	16"	19.2"	24"	12"	16"	19.2"	24"
9-1/2"	NI-20	16'-6"	15'-1"	14'-3"	-	16'-6"	15'-1"	14'-3"	-
	NI-40x	17'-9"	16'-10"	15'-11"	-	18'-2"	16'-11"	15'-11"	-
	NI-60	17'-11"	16'-11"	16'-2"	-	18'-5"	17'-2"	16'-2"	-
	NI-80	19'-3"	17'-10"	17'-3"	-	19'-8"	18'-3"	17'-7"	-
11-7/8"	NI-20	19'-4"	18'-0"	17'-1"	-	19'-9"	18'-1"	17'-1"	-
	NI-40x	20'-10"	19'-4"	18'-6"	-	21'-5"	19'-11"	19'-0"	-
	NI-60	21'-1"	19'-7"	18'-8"	-	21'-8"	20'-2"	19'-3"	-
	NI-80	22'-6"	20'-10"	19'-11"	-	23'-1"	21'-5"	20'-5"	-
	NI-90	23'-0"	21'-3"	20'-4"	-	23'-6"	21'-10"	20'-10"	-
14"	NI-40x	23'-5"	21'-8"	20'-9"	-	24'-0"	22'-5"	21'-5"	-
	NI-60	23'-9"	22'-0"	21'-0"	-	24'-5"	22'-8"	21'-8"	-
	NI-80	25'-4"	23'-6"	22'-5"	-	25'-11"	24'-1"	23'-0"	-
	NI-90	25'-10"	23'-11"	22'-9"	-	26'-5"	24'-6"	23'-4"	-
16"	NI-60	26'-2"	24'-3"	23'-2"	-	26'-11"	25'-0"	23'-11"	-
	NI-80	27'-11"	25'-10"	24'-7"	-	28'-7"	26'-6"	25'-3"	-
	NI-90	28'-5"	26'-3"	25'-0"	-	29'-0"	26'-11"	25'-8"	-

Notes:

- The tabulated clear spans are based on CSA O86-14 and NBC 2015, and are applicable to residential floor construction meeting the above design criteria.
- For multiple-span applications, the end spans shall be 40% or more of the adjacent span.
- Minimum bearing length shall be 1-3/4 inch for end bearings, and 3-1/2 inches for intermediate bearings.
- Bearing stiffeners are not required when I-joists are used in accordance with this table, except as required for hangers.
- Nordic I-joists are listed in CCMC Evaluation Report 13032-R and APA Product Report PR-L274C.

Maximum Floor Spans – S7.1

Design Criteria

Spans:	Simple span
Loads:	Live load = 40 psf and dead load = 15 psf
Deflection limits:	L/480 under live load and L/240 under total load
Sheathing:	3/4 in. nailed-glued Canadian softwood plywood

Maximum Floor Spans

Joist depth	Joist series	Bare On centre spacing				1/2 in. gypsum ceiling On centre spacing			
		12"	16"	19.2"	24"	12"	16"	19.2"	24"
9-1/2"	NI-20	15'-10"	15'-0"	14'-5"	13'-5"	16'-4"	15'-5"	14'-6"	13'-5"
	NI-40x	16'-11"	15'-11"	15'-4"	14'-9"	17'-4"	16'-4"	15'-9"	15'-1"
	NI-60	17'-1"	16'-1"	15'-6"	14'-10"	17'-6"	16'-6"	15'-11"	15'-3"
	NI-80	18'-1"	17'-0"	16'-4"	15'-8"	18'-7"	17'-4"	16'-8"	16'-0"
11-7/8"	NI-20	17'-10"	16'-10"	16'-2"	15'-7"	18'-5"	17'-4"	16'-9"	16'-1"
	NI-40x	19'-3"	17'-10"	17'-2"	16'-6"	19'-10"	18'-5"	17'-8"	16'-11"
	NI-60	19'-6"	18'-1"	17'-4"	16'-8"	20'-1"	18'-8"	17'-10"	17'-1"
	NI-80	20'-11"	19'-4"	18'-5"	17'-7"	21'-5"	19'-10"	18'-11"	17'-11"
	NI-90	21'-4"	19'-9"	18'-9"	17'-10"	21'-10"	20'-3"	19'-3"	18'-3"
14"	NI-40x	21'-4"	19'-9"	18'-10"	17'-11"	22'-0"	20'-5"	19'-6"	18'-6"
	NI-60	21'-8"	20'-1"	19'-2"	18'-2"	22'-4"	20'-9"	19'-9"	18'-9"
	NI-80	23'-3"	21'-6"	20'-5"	19'-4"	23'-10"	22'-1"	21'-0"	19'-11"
	NI-90	23'-9"	21'-11"	20'-10"	19'-8"	24'-3"	22'-6"	21'-5"	20'-3"
16"	NI-60	23'-7"	21'-10"	20'-10"	19'-9"	24'-4"	22'-7"	21'-7"	20'-5"
	NI-80	25'-4"	23'-5"	22'-3"	21'-1"	26'-0"	24'-1"	22'-11"	21'-8"
	NI-90	25'-10"	23'-10"	22'-8"	21'-5"	26'-5"	24'-6"	23'-4"	22'-0"

Joist depth	Joist series	Mid-span blocking with 1x4 inch strap On centre spacing				Mid-span blocking and 1/2 in. gypsum ceiling On centre spacing			
		12"	16"	19.2"	24"	12"	16"	19.2"	24"
9-1/2"	NI-20	16'-10"	15'-5"	14'-6"	13'-5"	16'-10"	15'-5"	14'-6"	13'-5"
	NI-40x	18'-7"	17'-2"	16'-3"	15'-2"	18'-10"	17'-2"	16'-3"	15'-2"
	NI-60	18'-10"	17'-6"	16'-6"	15'-5"	19'-1"	17'-6"	16'-6"	15'-5"
	NI-80	20'-2"	18'-9"	17'-11"	16'-10"	20'-7"	19'-2"	18'-2"	16'-10"
11-7/8"	NI-20	20'-1"	18'-5"	17'-5"	16'-2"	20'-1"	18'-5"	17'-5"	16'-2"
	NI-40x	21'-9"	20'-3"	19'-4"	17'-8"	22'-4"	20'-5"	19'-4"	17'-8"
	NI-60	22'-0"	20'-6"	19'-7"	18'-4"	22'-7"	20'-10"	19'-8"	18'-4"
	NI-80	23'-6"	21'-10"	20'-10"	19'-9"	24'-0"	22'-5"	21'-4"	20'-0"
	NI-90	24'-0"	22'-4"	21'-3"	20'-1"	24'-6"	22'-10"	21'-9"	20'-7"
14"	NI-40x	24'-4"	22'-8"	21'-8"	19'-5"	25'-0"	23'-2"	21'-9"	19'-5"
	NI-60	24'-9"	23'-0"	22'-0"	20'-9"	25'-5"	23'-8"	22'-4"	20'-10"
	NI-80	26'-5"	24'-6"	23'-4"	22'-1"	27'-0"	25'-2"	24'-0"	22'-8"
	NI-90	26'-11"	25'-0"	23'-10"	22'-6"	27'-5"	25'-7"	24'-5"	23'-1"
16"	NI-60	27'-2"	25'-4"	24'-2"	22'-10"	27'-11"	26'-1"	24'-9"	23'-1"
	NI-80	29'-0"	26'-11"	25'-8"	24'-3"	29'-7"	27'-7"	26'-4"	24'-11"
	NI-90	29'-6"	27'-5"	26'-1"	24'-8"	30'-1"	28'-1"	26'-9"	25'-4"

Notes:

1. The tabulated clear spans are based on CSA O86-14 and NBC 2015, and are applicable to residential floor construction meeting the above design criteria.
2. For multiple-span applications, the end spans shall be 40% or more of the adjacent span.
3. Minimum bearing length shall be 1-3/4 inch for end bearings, and 3-1/2 inches for intermediate bearings.
4. Bearing stiffeners are not required when I-joists are used in accordance with this table, except as required for hangers.
5. Nordic I-joists are listed in CCMC Evaluation Report 13032-R and APA Product Report PR-L274C.

Maximum Floor Spans – M2.1

Design Criteria

Spans:	Simple span
Loads:	Live load = 40 psf and dead load = 20 psf
Deflection limits:	L/480 under live load and L/240 under total load
Sheathing:	5/8 in. nailed-glued oriented strand board (OSB) sheathing

Maximum Floor Spans

Joist depth	Joist series	Bare On centre spacing				1/2 in. gypsum ceiling On centre spacing			
		12"	16"	19.2"	24"	12"	16"	19.2"	24"
9-1/2"	NI-20	15'-1"	14'-3"	13'-10"	-	15'-7"	14'-9"	14'-3"	-
	NI-40x	16'-2"	15'-3"	14'-8"	-	16'-7"	15'-8"	15'-1"	-
	NI-60	16'-4"	15'-4"	14'-10"	-	16'-9"	15'-9"	15'-3"	-
	NI-80	17'-3"	16'-3"	15'-8"	-	17'-8"	16'-7"	16'-0"	-
11-7/8"	NI-20	17'-0"	16'-0"	15'-6"	-	17'-6"	16'-7"	16'-0"	-
	NI-40x	18'-2"	17'-1"	16'-6"	-	18'-9"	17'-6"	16'-11"	-
	NI-60	18'-5"	17'-3"	16'-8"	-	19'-0"	17'-8"	17'-1"	-
	NI-80	19'-9"	18'-3"	17'-7"	-	20'-4"	18'-10"	18'-0"	-
	NI-90	20'-2"	18'-8"	17'-10"	-	20'-9"	19'-2"	18'-4"	-
14"	NI-40x	20'-1"	18'-8"	17'-10"	-	20'-10"	19'-4"	18'-6"	-
	NI-60	20'-6"	18'-11"	18'-2"	-	21'-2"	19'-8"	18'-9"	-
	NI-80	21'-11"	20'-3"	19'-4"	-	22'-7"	20'-11"	20'-0"	-
	NI-90	22'-5"	20'-8"	19'-9"	-	23'-0"	21'-4"	20'-4"	-
16"	NI-60	22'-4"	20'-8"	19'-9"	-	23'-1"	21'-5"	20'-6"	-
	NI-80	23'-11"	22'-1"	21'-1"	-	24'-8"	22'-10"	21'-9"	-
	NI-90	24'-5"	22'-6"	21'-6"	-	25'-1"	23'-2"	22'-2"	-

Joist depth	Joist series	Mid-span blocking with 1x4 inch strap On centre spacing				Mid-span blocking and 1/2 in. gypsum ceiling On centre spacing			
		12"	16"	19.2"	24"	12"	16"	19.2"	24"
9-1/2"	NI-20	16'-8"	15'-3"	14'-5"	-	16'-8"	15'-3"	14'-5"	-
	NI-40x	17'-11"	17'-0"	16'-1"	-	18'-5"	17'-1"	16'-1"	-
	NI-60	18'-2"	17'-1"	16'-4"	-	18'-8"	17'-4"	16'-4"	-
	NI-80	19'-5"	18'-0"	17'-5"	-	19'-10"	18'-5"	17'-8"	-
11-7/8"	NI-20	19'-7"	18'-2"	17'-3"	-	19'-11"	18'-3"	17'-3"	-
	NI-40x	21'-1"	19'-7"	18'-8"	-	21'-8"	20'-2"	19'-0"	-
	NI-60	21'-4"	19'-9"	18'-11"	-	21'-11"	20'-5"	19'-6"	-
	NI-80	22'-9"	21'-1"	20'-2"	-	23'-3"	21'-8"	20'-8"	-
	NI-90	23'-3"	21'-6"	20'-6"	-	23'-9"	22'-0"	21'-0"	-
14"	NI-40x	23'-8"	21'-11"	20'-11"	-	24'-4"	22'-8"	20'-11"	-
	NI-60	24'-0"	22'-3"	21'-3"	-	24'-8"	22'-11"	21'-11"	-
	NI-80	25'-7"	23'-9"	22'-7"	-	26'-2"	24'-4"	23'-3"	-
	NI-90	26'-1"	24'-2"	23'-0"	-	26'-8"	24'-9"	23'-7"	-
16"	NI-60	26'-5"	24'-6"	23'-5"	-	27'-2"	25'-3"	24'-2"	-
	NI-80	28'-2"	26'-1"	24'-10"	-	28'-10"	26'-9"	25'-6"	-
	NI-90	28'-8"	26'-6"	25'-3"	-	29'-3"	27'-2"	25'-11"	-

Notes:

- The tabulated clear spans are based on CSA O86-14 and NBC 2015, and are applicable to residential floor construction meeting the above design criteria.
- For multiple-span applications, the end spans shall be 40% or more of the adjacent span.
- Minimum bearing length shall be 1-3/4 inch for end bearings, and 3-1/2 inches for intermediate bearings.
- Bearing stiffeners are not required when I-joists are used in accordance with this table, except as required for hangers.
- Nordic I-joists are listed in CCMC Evaluation Report 13032-R and APA Product Report PR-L274C.

Maximum Floor Spans – M4.1

Design Criteria

Spans:	Simple span
Loads:	Live load = 40 psf and dead load = 20 psf
Deflection limits:	L/480 under live load and L/240 under total load
Sheathing:	3/4 in. nailed-glued oriented strand board (OSB) sheathing

Maximum Floor Spans

Joist depth	Joist series	Bare On centre spacing				1/2 in. gypsum ceiling On centre spacing			
		12"	16"	19.2"	24"	12"	16"	19.2"	24"
9-1/2"	NI-20	15'-11"	15'-0"	14'-6"	13'-5"	16'-5"	15'-5"	14'-6"	13'-5"
	NI-40x	17'-0"	16'-0"	15'-5"	14'-10"	17'-5"	16'-5"	15'-10"	14'-11"
	NI-60	17'-2"	16'-2"	15'-7"	14'-11"	17'-7"	16'-7"	16'-0"	15'-4"
	NI-80	18'-3"	17'-1"	16'-5"	15'-9"	18'-8"	17'-5"	16'-9"	16'-1"
11-7/8"	NI-20	17'-11"	16'-11"	16'-3"	15'-8"	18'-7"	17'-5"	16'-10"	16'-1"
	NI-40x	19'-4"	17'-11"	17'-3"	16'-7"	19'-11"	18'-6"	17'-9"	17'-0"
	NI-60	19'-7"	18'-2"	17'-6"	16'-9"	20'-2"	18'-9"	17'-11"	17'-2"
	NI-80	21'-1"	19'-6"	18'-6"	17'-7"	21'-7"	20'-0"	19'-0"	18'-0"
	NI-90	21'-6"	19'-10"	18'-11"	17'-11"	22'-0"	20'-4"	19'-5"	18'-4"
14"	NI-40x	21'-5"	19'-11"	18'-11"	18'-0"	22'-1"	20'-7"	19'-7"	18'-7"
	NI-60	21'-10"	20'-2"	19'-3"	18'-3"	22'-6"	20'-10"	19'-11"	18'-10"
	NI-80	23'-5"	21'-7"	20'-7"	19'-5"	24'-0"	22'-3"	21'-2"	20'-0"
	NI-90	23'-10"	22'-1"	21'-0"	19'-10"	24'-5"	22'-7"	21'-6"	20'-4"
16"	NI-60	23'-9"	22'-0"	21'-0"	19'-10"	24'-6"	22'-9"	21'-8"	20'-7"
	NI-80	25'-6"	23'-7"	22'-5"	21'-2"	26'-2"	24'-3"	23'-1"	21'-10"
	NI-90	26'-0"	24'-0"	22'-10"	21'-6"	26'-7"	24'-8"	23'-5"	22'-2"

Joist depth	Joist series	Mid-span blocking with 1x4 inch strap On centre spacing				Mid-span blocking and 1/2 in. gypsum ceiling On centre spacing			
		12"	16"	19.2"	24"	12"	16"	19.2"	24"
9-1/2"	NI-20	16'-10"	15'-5"	14'-6"	13'-5"	16'-10"	15'-5"	14'-6"	13'-5"
	NI-40x	18'-8"	17'-2"	16'-3"	14'-11"	18'-10"	17'-2"	16'-3"	14'-11"
	NI-60	18'-11"	17'-6"	16'-6"	15'-5"	19'-2"	17'-6"	16'-6"	15'-5"
	NI-80	20'-3"	18'-10"	17'-11"	16'-10"	20'-8"	19'-3"	18'-2"	16'-10"
11-7/8"	NI-20	20'-1"	18'-5"	17'-5"	16'-1"	20'-1"	18'-5"	17'-5"	16'-1"
	NI-40x	21'-10"	20'-4"	19'-0"	17'-0"	22'-5"	20'-6"	19'-0"	17'-0"
	NI-60	22'-1"	20'-7"	19'-8"	18'-4"	22'-8"	20'-10"	19'-8"	18'-4"
	NI-80	23'-8"	22'-0"	20'-11"	19'-10"	24'-1"	22'-6"	21'-6"	20'-0"
	NI-90	24'-1"	22'-5"	21'-4"	20'-2"	24'-7"	22'-11"	21'-10"	20'-7"
14"	NI-40x	24'-5"	22'-9"	20'-11"	18'-8"	25'-1"	22'-11"	20'-11"	18'-8"
	NI-60	24'-10"	23'-2"	22'-1"	20'-10"	25'-6"	23'-8"	22'-4"	20'-10"
	NI-80	26'-6"	24'-8"	23'-6"	22'-2"	27'-1"	25'-3"	24'-1"	22'-9"
	NI-90	27'-0"	25'-1"	23'-11"	22'-7"	27'-6"	25'-8"	24'-6"	23'-2"
16"	NI-60	27'-3"	25'-5"	24'-3"	22'-11"	28'-0"	26'-2"	24'-9"	23'-1"
	NI-80	29'-1"	27'-1"	25'-9"	24'-4"	29'-8"	27'-9"	26'-5"	25'-0"
	NI-90	29'-7"	27'-6"	26'-2"	24'-9"	30'-2"	28'-2"	26'-10"	25'-5"

Notes:

- The tabulated clear spans are based on CSA O86-14 and NBC 2015, and are applicable to residential floor construction meeting the above design criteria.
- For multiple-span applications, the end spans shall be 40% or more of the adjacent span.
- Minimum bearing length shall be 1-3/4 inch for end bearings, and 3-1/2 inches for intermediate bearings.
- Bearing stiffeners are not required when I-joists are used in accordance with this table, except as required for hangers.
- Nordic I-joists are listed in CCMC Evaluation Report 13032-R and APA Product Report PR-L274C.

Maximum Floor Spans – M6.1

Design Criteria

Spans:	Simple span
Loads:	Live load = 40 psf and dead load = 20 psf
Deflection limits:	L/480 under live load and L/240 under total load
Sheathing:	5/8 in. nailed-glued Canadian softwood plywood

Maximum Floor Spans

Joist depth	Joist series	Bare On centre spacing				1/2 in. gypsum ceiling On centre spacing			
		12"	16"	19.2"	24"	12"	16"	19.2"	24"
9-1/2"	NI-20	14'-11"	14'-1"	13'-7"	-	15'-4"	14'-6"	14'-1"	-
	NI-40x	15'-11"	15'-0"	14'-6"	-	16'-4"	15'-5"	14'-11"	-
	NI-60	16'-1"	15'-2"	14'-8"	-	16'-6"	15'-7"	15'-1"	-
	NI-80	17'-1"	16'-1"	15'-6"	-	17'-5"	16'-5"	15'-10"	-
11-7/8"	NI-20	16'-9"	15'-10"	15'-4"	-	17'-4"	16'-4"	15'-10"	-
	NI-40x	17'-10"	16'-10"	16'-3"	-	18'-6"	17'-4"	16'-9"	-
	NI-60	18'-1"	17'-0"	16'-5"	-	18'-9"	17'-6"	16'-11"	-
	NI-80	19'-6"	18'-0"	17'-4"	-	20'-1"	18'-7"	17'-9"	-
	NI-90	19'-11"	18'-4"	17'-8"	-	20'-5"	18'-11"	18'-1"	-
14"	NI-40x	19'-10"	18'-4"	17'-8"	-	20'-6"	19'-1"	18'-3"	-
	NI-60	20'-2"	18'-8"	17'-11"	-	20'-10"	19'-4"	18'-6"	-
	NI-80	21'-8"	20'-0"	19'-1"	-	22'-4"	20'-8"	19'-9"	-
	NI-90	22'-1"	20'-5"	19'-6"	-	22'-9"	21'-0"	20'-1"	-
16"	NI-60	22'-0"	20'-4"	19'-6"	-	22'-9"	21'-1"	20'-2"	-
	NI-80	23'-7"	21'-10"	20'-10"	-	24'-4"	22'-6"	21'-6"	-
	NI-90	24'-1"	22'-2"	21'-2"	-	24'-9"	22'-11"	21'-10"	-

Joist depth	Joist series	Mid-span blocking with 1x4 inch strap On centre spacing				Mid-span blocking and 1/2 in. gypsum ceiling On centre spacing			
		12"	16"	19.2"	24"	12"	16"	19.2"	24"
9-1/2"	NI-20	16'-6"	15'-1"	14'-3"	-	16'-6"	15'-1"	14'-3"	-
	NI-40x	17'-9"	16'-10"	15'-11"	-	18'-2"	16'-11"	15'-11"	-
	NI-60	17'-11"	16'-11"	16'-2"	-	18'-5"	17'-2"	16'-2"	-
	NI-80	19'-3"	17'-10"	17'-3"	-	19'-8"	18'-3"	17'-7"	-
11-7/8"	NI-20	19'-4"	18'-0"	17'-1"	-	19'-9"	18'-1"	17'-1"	-
	NI-40x	20'-10"	19'-4"	18'-6"	-	21'-5"	19'-11"	19'-0"	-
	NI-60	21'-1"	19'-7"	18'-8"	-	21'-8"	20'-2"	19'-3"	-
	NI-80	22'-6"	20'-10"	19'-11"	-	23'-1"	21'-5"	20'-5"	-
	NI-90	23'-0"	21'-3"	20'-4"	-	23'-6"	21'-10"	20'-10"	-
14"	NI-40x	23'-5"	21'-8"	20'-9"	-	24'-0"	22'-5"	20'-11"	-
	NI-60	23'-9"	22'-0"	21'-0"	-	24'-5"	22'-8"	21'-8"	-
	NI-80	25'-4"	23'-6"	22'-5"	-	25'-11"	24'-1"	23'-0"	-
	NI-90	25'-10"	23'-11"	22'-9"	-	26'-5"	24'-6"	23'-4"	-
16"	NI-60	26'-2"	24'-3"	23'-2"	-	26'-11"	25'-0"	23'-11"	-
	NI-80	27'-11"	25'-10"	24'-7"	-	28'-7"	26'-6"	25'-3"	-
	NI-90	28'-5"	26'-3"	25'-0"	-	29'-0"	26'-11"	25'-8"	-

Notes:

- The tabulated clear spans are based on CSA O86-14 and NBC 2015, and are applicable to residential floor construction meeting the above design criteria.
- For multiple-span applications, the end spans shall be 40% or more of the adjacent span.
- Minimum bearing length shall be 1-3/4 inch for end bearings, and 3-1/2 inches for intermediate bearings.
- Bearing stiffeners are not required when I-joists are used in accordance with this table, except as required for hangers.
- Nordic I-joists are listed in CCMC Evaluation Report 13032-R and APA Product Report PR-L274C.

Maximum Floor Spans – M7.1

Design Criteria

Spans:	Simple span
Loads:	Live load = 40 psf and dead load = 20 psf
Deflection limits:	L/480 under live load and L/240 under total load
Sheathing:	3/4 in. nailed-glued Canadian softwood plywood

Maximum Floor Spans

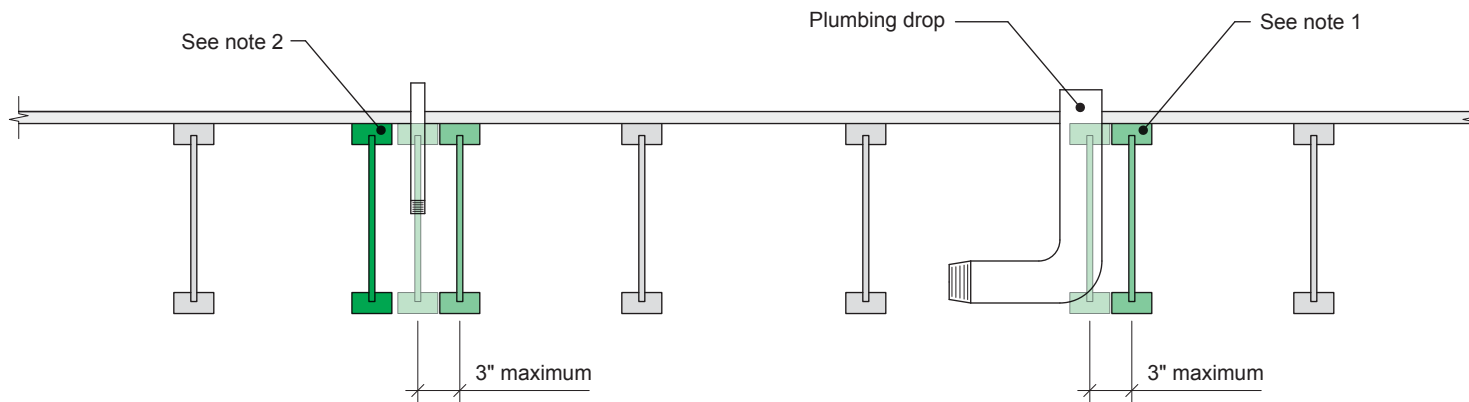
Joist depth	Joist series	Bare On centre spacing				1/2 in. gypsum ceiling On centre spacing			
		12"	16"	19.2"	24"	12"	16"	19.2"	24"
9-1/2"	NI-20	15'-10"	15'-0"	14'-5"	13'-5"	16'-4"	15'-5"	14'-6"	13'-5"
	NI-40x	16'-11"	15'-11"	15'-4"	14'-9"	17'-4"	16'-4"	15'-9"	14'-11"
	NI-60	17'-1"	16'-1"	15'-6"	14'-10"	17'-6"	16'-6"	15'-11"	15'-3"
	NI-80	18'-1"	17'-0"	16'-4"	15'-8"	18'-7"	17'-4"	16'-8"	16'-0"
11-7/8"	NI-20	17'-10"	16'-10"	16'-2"	15'-7"	18'-5"	17'-4"	16'-9"	16'-1"
	NI-40x	19'-3"	17'-10"	17'-2"	16'-6"	19'-10"	18'-5"	17'-8"	16'-11"
	NI-60	19'-6"	18'-1"	17'-4"	16'-8"	20'-1"	18'-8"	17'-10"	17'-1"
	NI-80	20'-11"	19'-4"	18'-5"	17'-7"	21'-5"	19'-10"	18'-11"	17'-11"
	NI-90	21'-4"	19'-9"	18'-9"	17'-10"	21'-10"	20'-3"	19'-3"	18'-3"
14"	NI-40x	21'-4"	19'-9"	18'-10"	17'-11"	22'-0"	20'-5"	19'-6"	18'-6"
	NI-60	21'-8"	20'-1"	19'-2"	18'-2"	22'-4"	20'-9"	19'-9"	18'-9"
	NI-80	23'-3"	21'-6"	20'-5"	19'-4"	23'-10"	22'-1"	21'-0"	19'-11"
	NI-90	23'-9"	21'-11"	20'-10"	19'-8"	24'-3"	22'-6"	21'-5"	20'-3"
16"	NI-60	23'-7"	21'-10"	20'-10"	19'-9"	24'-4"	22'-7"	21'-7"	20'-5"
	NI-80	25'-4"	23'-5"	22'-3"	21'-1"	26'-0"	24'-1"	22'-11"	21'-8"
	NI-90	25'-10"	23'-10"	22'-8"	21'-5"	26'-5"	24'-6"	23'-4"	22'-0"

Joist depth	Joist series	Mid-span blocking with 1x4 inch strap On centre spacing				Mid-span blocking and 1/2 in. gypsum ceiling On centre spacing			
		12"	16"	19.2"	24"	12"	16"	19.2"	24"
9-1/2"	NI-20	16'-10"	15'-5"	14'-6"	13'-5"	16'-10"	15'-5"	14'-6"	13'-5"
	NI-40x	18'-7"	17'-2"	16'-3"	14'-11"	18'-10"	17'-2"	16'-3"	14'-11"
	NI-60	18'-10"	17'-6"	16'-6"	15'-5"	19'-1"	17'-6"	16'-6"	15'-5"
	NI-80	20'-2"	18'-9"	17'-11"	16'-10"	20'-7"	19'-2"	18'-2"	16'-10"
11-7/8"	NI-20	20'-1"	18'-5"	17'-5"	16'-1"	20'-1"	18'-5"	17'-5"	16'-1"
	NI-40x	21'-9"	20'-3"	19'-0"	17'-0"	22'-4"	20'-5"	19'-0"	17'-0"
	NI-60	22'-0"	20'-6"	19'-7"	18'-4"	22'-7"	20'-10"	19'-8"	18'-4"
	NI-80	23'-6"	21'-10"	20'-10"	19'-9"	24'-0"	22'-5"	21'-4"	20'-0"
	NI-90	24'-0"	22'-4"	21'-3"	20'-1"	24'-6"	22'-10"	21'-9"	20'-7"
14"	NI-40x	24'-4"	22'-8"	20'-11"	18'-8"	25'-0"	22'-11"	20'-11"	18'-8"
	NI-60	24'-9"	23'-0"	22'-0"	20'-9"	25'-5"	23'-8"	22'-4"	20'-10"
	NI-80	26'-5"	24'-6"	23'-4"	22'-1"	27'-0"	25'-2"	24'-0"	22'-8"
	NI-90	26'-11"	25'-0"	23'-10"	22'-6"	27'-5"	25'-7"	24'-5"	23'-1"
16"	NI-60	27'-2"	25'-4"	24'-2"	22'-10"	27'-11"	26'-1"	24'-9"	23'-1"
	NI-80	29'-0"	26'-11"	25'-8"	24'-3"	29'-7"	27'-7"	26'-4"	24'-11"
	NI-90	29'-6"	27'-5"	26'-1"	24'-8"	30'-1"	28'-1"	26'-9"	25'-4"

Notes:

1. The tabulated clear spans are based on CSA O86-14 and NBC 2015, and are applicable to residential floor construction meeting the above design criteria.
2. For multiple-span applications, the end spans shall be 40% or more of the adjacent span.
3. Minimum bearing length shall be 1-3/4 inch for end bearings, and 3-1/2 inches for intermediate bearings.
4. Bearing stiffeners are not required when I-joists are used in accordance with this table, except as required for hangers.
5. Nordic I-joists are listed in CCMC Evaluation Report 13032-R and APA Product Report PR-L274C.

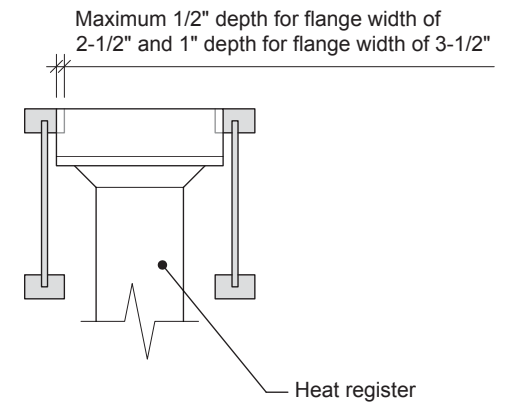
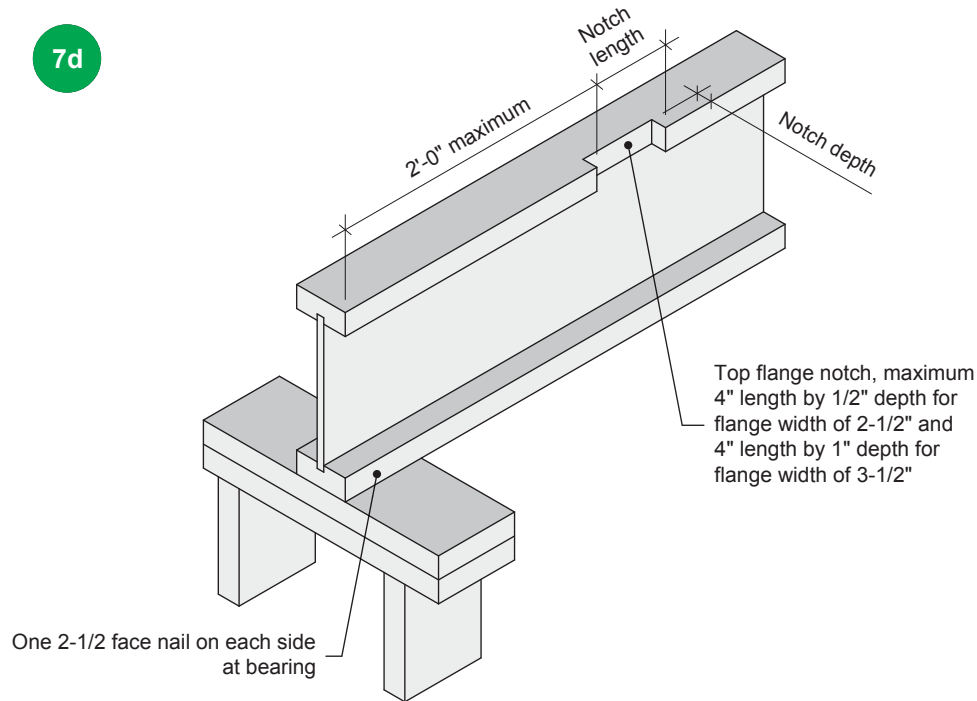
7c

**Notes:**

1. To prevent interference with plumbing, a joist may be shifted up to 3 inches if the edge of the floor panel is supported and the span rating is not exceeded.
2. In all other cases, an additional joist is required.

All nails shown in the details are assumed to be common nails unless otherwise noted. Nails shall have a diameter not less than 0.128 inch for 2-1/2-inch nails, or 0.144 inch for 3-inch nails. Individual components not shown to scale for clarity.

7d



Notes:

1. Blocking required at bearing for lateral support, not shown for clarity.
2. The maximum dimensions for a notch on the side of the top flange are 4-inch length by 1/2-inch depth for flange width of 2-1/2 inches, and 4-inch length by 1-inch depth for flange width of 3-1/2 inches.
3. This detail applies to simple-span joists and multiple-span joists where the notch is located at the end half-span.
4. For other applications, contact Nordic Structures.

All nails shown in the details are assumed to be common nails unless otherwise noted. Nails shall have a diameter not less than 0.128 inch for 2-1/2-inch nails, or 0.144 inch for 3-inch nails. Individual components not shown to scale for clarity.