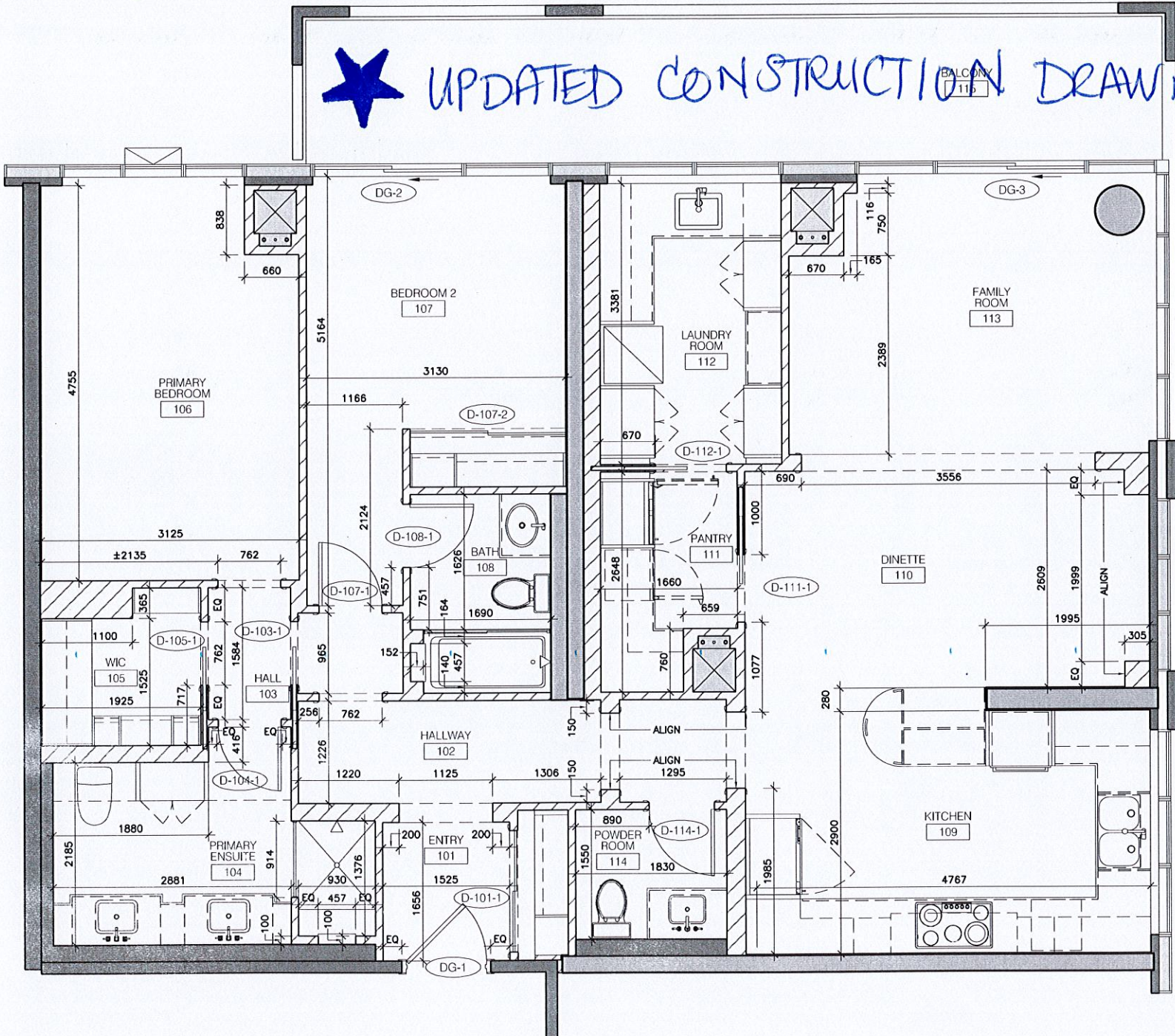


SUITE 1017 & 1018 WEST. AVERSA SUITE

★ UPDATED CONSTRUCTION DRAWINGS



06	230127	ISSUED FOR CONSTRUCTION
05	230126	ISSUED FOR CONSTRUCTION
04	221007	ISSUED FOR CONSTRUCTION
03	220525	ISSUED FOR CONSTRUCTION
02	211217	ISSUED FOR CONSULTANT REVIEW
01	211207	ISSUED FOR CLIENT REVIEW
00	DATE	ISSUED / REVISED

PAGE 1 OF 5

Interior Design Consultant:



10 Ray St South, Hamilton, ON L8P 3V2
T 905-524-2556 F 905-524-2312
info@galloconsultants.ca

Project:
AVERSA CONDO
JANE STREET & BASS PRO MILLS DR.
VAUGHAN, ON

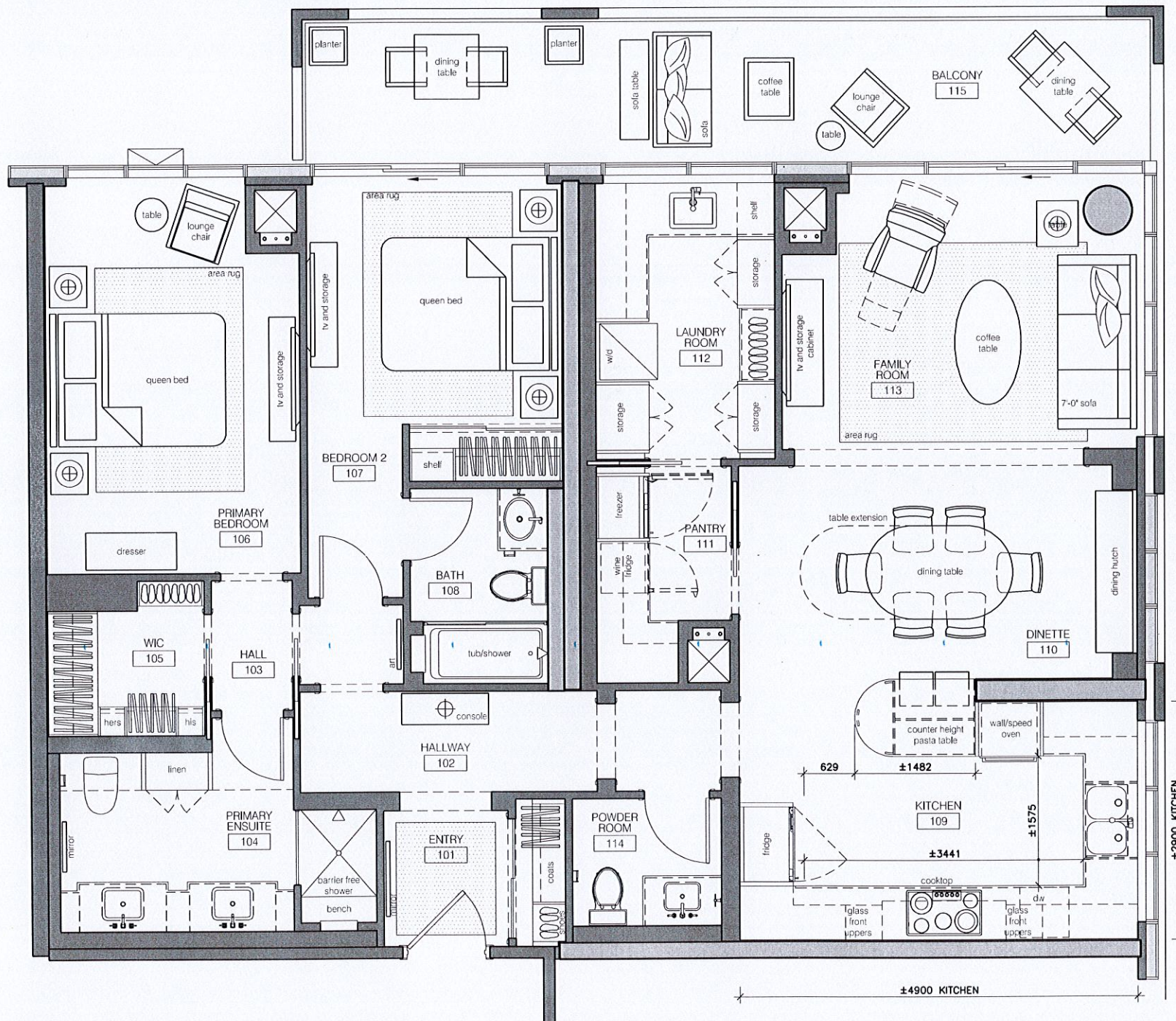
Title: PARTITION PLAN

Notes:
- Contractors to verify all site dimensions and report any discrepancies before commencing with work. - Dimensions shall take precedence over scale.
- No variation or modification to work shall be implemented without prior written approval.
- All plans, specifications and work is subject to Department of Labour, Fire Department and Building Department approval.
- All previous issues of this drawing are superseded.
- All prints of drawings and specifications are the property of Gallo Design Consultants and must be returned upon project completion.

© 2023 Gallo Design Consultants
DO NOT SCALE THE DRAWINGS

Date: JANUARY 27, 2023
Drawn by: RG
Check by: KD
Scale: 1:50
Project No.:
Dwg.No:

ID-101.1



06	230127	ISSUED FOR CONSTRUCTION
05	230126	ISSUED FOR CONSTRUCTION
04	221007	ISSUED FOR CONSTRUCTION
03	220525	ISSUED FOR CONSTRUCTION
02	211217	ISSUED FOR CONSULTANT REVIEW
01	211207	ISSUED FOR CLIENT REVIEW
00	DATE	ISSUED / REVISED

PAGE 2 of 5

Interior Design Consultant:



10 Ray St South, Hamilton, ON L8P 3V2
T 905-524-2556 F 905-524-2312
info@galloconsultants.ca

Project: **AVERSA CONDO**
JANE STREET & BASS PRO MILLS DR.
VAUGHAN, ON

Title: FURNITURE PLAN

Notes:

- Contractors to verify all site dimensions and report any discrepancies before commencing with work. - Dimensions shall take precedence over scale.
- No variation or modification to work shall be implemented without prior written approval.
- All plans, specifications and work is subject to Department of Labour, Fire Department and Building Department approval.
- All previous issues of this drawing are superseded.
- All prints of drawings and specifications are the property of Gallo Design Consultants and must be returned upon project completion.

© 2023 Gallo Design Consultants
DO NOT SCALE THE DRAWINGS

Date: JANUARY 27, 2023

Drawn by: RG

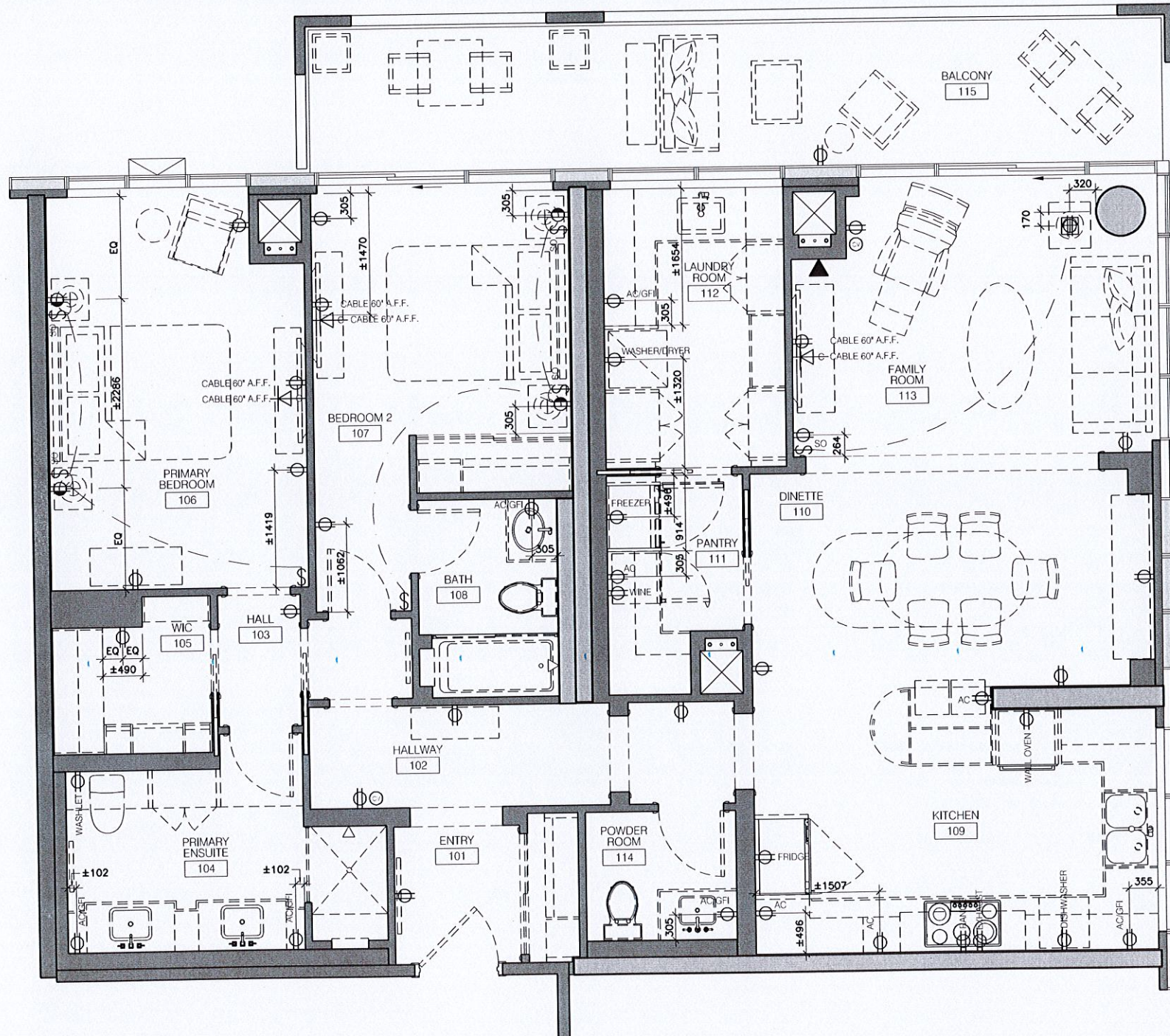
Check by: KD

Scale: 1:50

Project No.:

Dwg.No:

ID-101.2



08	230127	ISSUED FOR CONSTRUCTION
07	230126	ISSUED FOR CONSTRUCTION
06	221007	ISSUED FOR CONSTRUCTION
05	220921	ISSUED FOR CONSTRUCTION
04	220525	ISSUED FOR CONSTRUCTION
03	220525	ISSUED FOR CONSTRUCTION
00	DATE	ISSUED / REVISED

ELECTRICAL PLAN LEGEND	
●	1. LIGHT FIXTURES
○	2. OUTLETS
□	3. SWITCHES
△	4. DIMMER SWITCHES
◇	5. RECEPTACLES
×	6. TRANSFORMERS
+	7. GROUNDING
•	8. CABLE TRAYS
•	9. CABLE ROUTING
•	10. CABLE SCHEDULE
•	11. CABLE SCHEDULE
•	12. CABLE SCHEDULE
•	13. CABLE SCHEDULE
•	14. CABLE SCHEDULE
•	15. CABLE SCHEDULE
•	16. CABLE SCHEDULE
•	17. CABLE SCHEDULE
•	18. CABLE SCHEDULE
•	19. CABLE SCHEDULE
•	20. CABLE SCHEDULE
•	21. CABLE SCHEDULE
•	22. CABLE SCHEDULE
•	23. CABLE SCHEDULE
•	24. CABLE SCHEDULE
•	25. CABLE SCHEDULE
•	26. CABLE SCHEDULE
•	27. CABLE SCHEDULE
•	28. CABLE SCHEDULE
•	29. CABLE SCHEDULE
•	30. CABLE SCHEDULE
•	31. CABLE SCHEDULE
•	32. CABLE SCHEDULE
•	33. CABLE SCHEDULE
•	34. CABLE SCHEDULE
•	35. CABLE SCHEDULE
•	36. CABLE SCHEDULE
•	37. CABLE SCHEDULE
•	38. CABLE SCHEDULE
•	39. CABLE SCHEDULE
•	40. CABLE SCHEDULE
•	41. CABLE SCHEDULE
•	42. CABLE SCHEDULE
•	43. CABLE SCHEDULE
•	44. CABLE SCHEDULE
•	45. CABLE SCHEDULE
•	46. CABLE SCHEDULE
•	47. CABLE SCHEDULE
•	48. CABLE SCHEDULE
•	49. CABLE SCHEDULE
•	50. CABLE SCHEDULE
•	51. CABLE SCHEDULE
•	52. CABLE SCHEDULE
•	53. CABLE SCHEDULE
•	54. CABLE SCHEDULE
•	55. CABLE SCHEDULE
•	56. CABLE SCHEDULE
•	57. CABLE SCHEDULE
•	58. CABLE SCHEDULE
•	59. CABLE SCHEDULE
•	60. CABLE SCHEDULE
•	61. CABLE SCHEDULE
•	62. CABLE SCHEDULE
•	63. CABLE SCHEDULE
•	64. CABLE SCHEDULE
•	65. CABLE SCHEDULE
•	66. CABLE SCHEDULE
•	67. CABLE SCHEDULE
•	68. CABLE SCHEDULE
•	69. CABLE SCHEDULE
•	70. CABLE SCHEDULE
•	71. CABLE SCHEDULE
•	72. CABLE SCHEDULE
•	73. CABLE SCHEDULE
•	74. CABLE SCHEDULE
•	75. CABLE SCHEDULE
•	76. CABLE SCHEDULE
•	77. CABLE SCHEDULE
•	78. CABLE SCHEDULE
•	79. CABLE SCHEDULE
•	80. CABLE SCHEDULE
•	81. CABLE SCHEDULE
•	82. CABLE SCHEDULE
•	83. CABLE SCHEDULE
•	84. CABLE SCHEDULE
•	85. CABLE SCHEDULE
•	86. CABLE SCHEDULE
•	87. CABLE SCHEDULE
•	88. CABLE SCHEDULE
•	89. CABLE SCHEDULE
•	90. CABLE SCHEDULE
•	91. CABLE SCHEDULE
•	92. CABLE SCHEDULE
•	93. CABLE SCHEDULE
•	94. CABLE SCHEDULE
•	95. CABLE SCHEDULE
•	96. CABLE SCHEDULE
•	97. CABLE SCHEDULE
•	98. CABLE SCHEDULE
•	99. CABLE SCHEDULE
•	100. CABLE SCHEDULE

ELECTRICAL PLAN NOTES

1. CONTRACTOR TO VERIFY ALL SITE DIMENSIONS AND REPORT ANY DISCREPANCIES BEFORE COMMENCING WORK. DIMENSIONS SHALL TAKE PRECEDENCE OVER SCALE.

2. NO VARIATION OR MODIFICATION TO WORK SHALL BE IMPLEMENTED WITHOUT PRIOR WRITTEN APPROVAL.

3. ALL PLANS, SPECIFICATIONS AND WORK IS SUBJECT TO DEPARTMENT OF LABOUR, FIRE DEPARTMENT AND BUILDING DEPARTMENT APPROVAL.

4. ALL PREVIOUS ISSUES OF THIS DRAWING ARE SUPERSEDED.

5. ALL PRINTS OF DRAWINGS AND SPECIFICATIONS ARE THE PROPERTY OF GALLO DESIGN CONSULTANTS AND MUST BE RETURNED UPON PROJECT COMPLETION.

© 2023 Gallo Design Consultants
DO NOT SCALE THE DRAWINGS

PAGE 4 OF 5

Interior Design Consultant:

Gallo Design Consultants

10 Ray St South, Hamilton, ON L8P 3V2
T 905-524-2556 F 905-524-2312
info@galloconsultants.ca

Project:
AVERSA CONDO
JANE STREET & BASS PRO MILLS DR.
VAUGHAN, ON

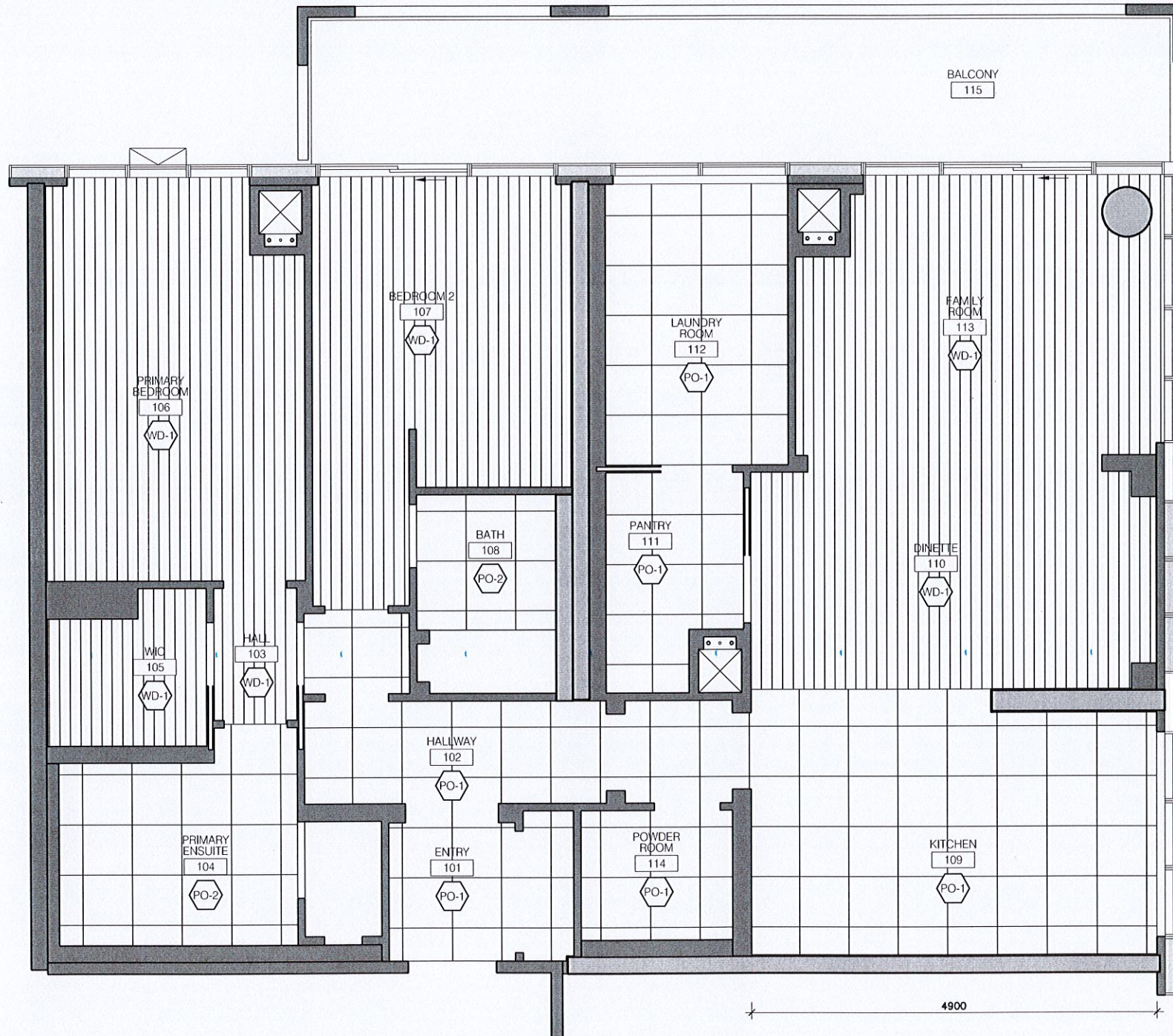
Title: ELECTRICAL PLAN

Notes:

- Contractors to verify all site dimensions and report any discrepancies before commencing work. Dimensions shall take precedence over scale.
- No variation or modification to work shall be implemented without prior written approval.
- All plans, specifications and work is subject to Department of Labour, Fire Department and Building Department approval.
- All previous issues of this drawing are superseded.
- All prints of drawings and specifications are the property of Gallo Design Consultants and must be returned upon project completion.

© 2023 Gallo Design Consultants
DO NOT SCALE THE DRAWINGS

Date:	JANUARY 27, 2023
Drawn by:	RG
Check by:	KD
Scale:	1:50
Project No.:	
Dwg.No:	ID-101.4



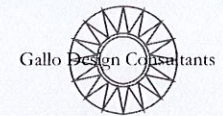
05	230127	ISSUED FOR CONSTRUCTION
04	221007	ISSUED FOR CONSTRUCTION
03	220525	ISSUED FOR CONSTRUCTION
02	211217	ISSUED FOR CONSULTANT REVIEW
01	211207	ISSUED FOR CLIENT REVIEW
00	DATE	ISSUED / REVISED

FINISHES PLAN LEGEND:	
SYMBOL	DESCRIPTION
	1. HARDWOOD - SPECIES TBD - FRESH TIES
	2. PORCELAIN TILE - PURETY CALACATTA POLISHED 600mm x 600mm
	3. PORCELAIN TILE - PURETY MARBLE MATTE 600mm x 600mm

FINISHES PLAN NOTES:

1. REFER TO INTERIOR DESIGN FINISHES SCHEDULE FOR ADDITIONAL FINISH INFORMATION.
2. GENERAL CONTRACTOR TO CONSULT WITH INTERIOR DESIGN CONSULTANT PRIOR TO INSTALLATION TO BUILD DRAWINGS OR ANY DISCREPANCIES. ANY ERROR TO INTERIOR DESIGN FINISH DRAWINGS OR FINISH SCHEDULE SHALL BE BROUGHT TO THE ATTENTION OF THE INTERIOR DESIGN CONSULTANT PRIOR TO CONSTRUCTION.
3. ALL STONE & TILE TO HAVE GROUT COLOUR CONFIRMED WITH INTERIOR DESIGN CONSULTANT PRIOR TO INSTALLATION. WORK SHALL BE REQUIRED TO CONFIRM SIZE & COLOUR OF GROUT LINES.
4. REFER TO INTERIOR DESIGN DETAIL DRAWINGS FOR STYLE OF THRESHOLD & APPLICATION.
5. REFER TO EXISTING INTERIOR DESIGN DRAWINGS FOR ENLARGED FLOOR FINISHES DRAWINGS.
6. ALL TILE SURFACES EXPOSED TO WATER AS SHOWER & POOL GROUT TO BE EPOXY AND SEALED AS REQUIRED.
7. ALL STAIR FINISHES TO BE SELECTED BY INTERIOR DESIGN CONSULTANT.
8. REFER TO FINISHES SCHEDULE FOR EXTERIOR PORCH FLOORING MATERIAL.

Interior Design Consultant:



10 Ray St South, Hamilton, ON L8P 3V2
T 905-524-2556 F 905-524-2312
info@galloconsultants.ca

Project: **AVERSA CONDO**
JANE STREET & BASS PRO MILLS DR.
VAUGHAN, ON

Title: FLOOR FINISHES PLAN

Notes:

- Contractors to verify all site dimensions and report any discrepancies before commencing with work.
- Dimensions shall take precedence over scale.
- No variation or modification to work shall be implemented without prior written approval.
- All plans, specifications and work is subject to Department of Labour, Fire Department and Building Department approval.
- All previous issues of this drawing are superseded.
- All prints of drawings and specifications are the property of Gallo Design Consultants and must be returned upon project completion.

© 2023 Gallo Design Consultants
DO NOT SCALE THE DRAWINGS

Date: JANUARY 27, 2023
Drawn by: RG
Check by: KD
Scale: 1:50
Project No.:
Dwg.No.:
ID-101.5

Julia Caivano

From: Rachel Gosselin <rachel@galloconsultants.ca>
Sent: Friday, January 27, 2023 2:32 PM
To: Doug Landon
Cc: Cristina Gallo; Anne Federico; Julia Caivano
Subject: Aversa Condo Construction Drawings
Attachments: 230127-Aversa Condo Construction Drawings.pdf

Hi everyone,

I hope you are all doing well. I was on site yesterday and took a few measurements. I have revised the construction drawings to better reflect what is on site. Please find them attached for your records.

Thank you,

Rachel Gosselin BID, Intern, ARIDO
Design Consultant

Gallo Design Consultants

10 Ray Street South, Unit 1A
Hamilton, ON, L8P 3V2
t. 905.524.2556
f. 905.524.2312

rachel@galloconsultants.ca

The information in this email is confidential, and is intended solely for the addressee(s). If the reader of this message is not the intended recipient, then copying, distributing, or modifying the contents of the email is strictly prohibited. If you have received this email in error, please notify us immediately by replying to the message, or by telephoning (905) 524-2556 and deleting it from your computer.