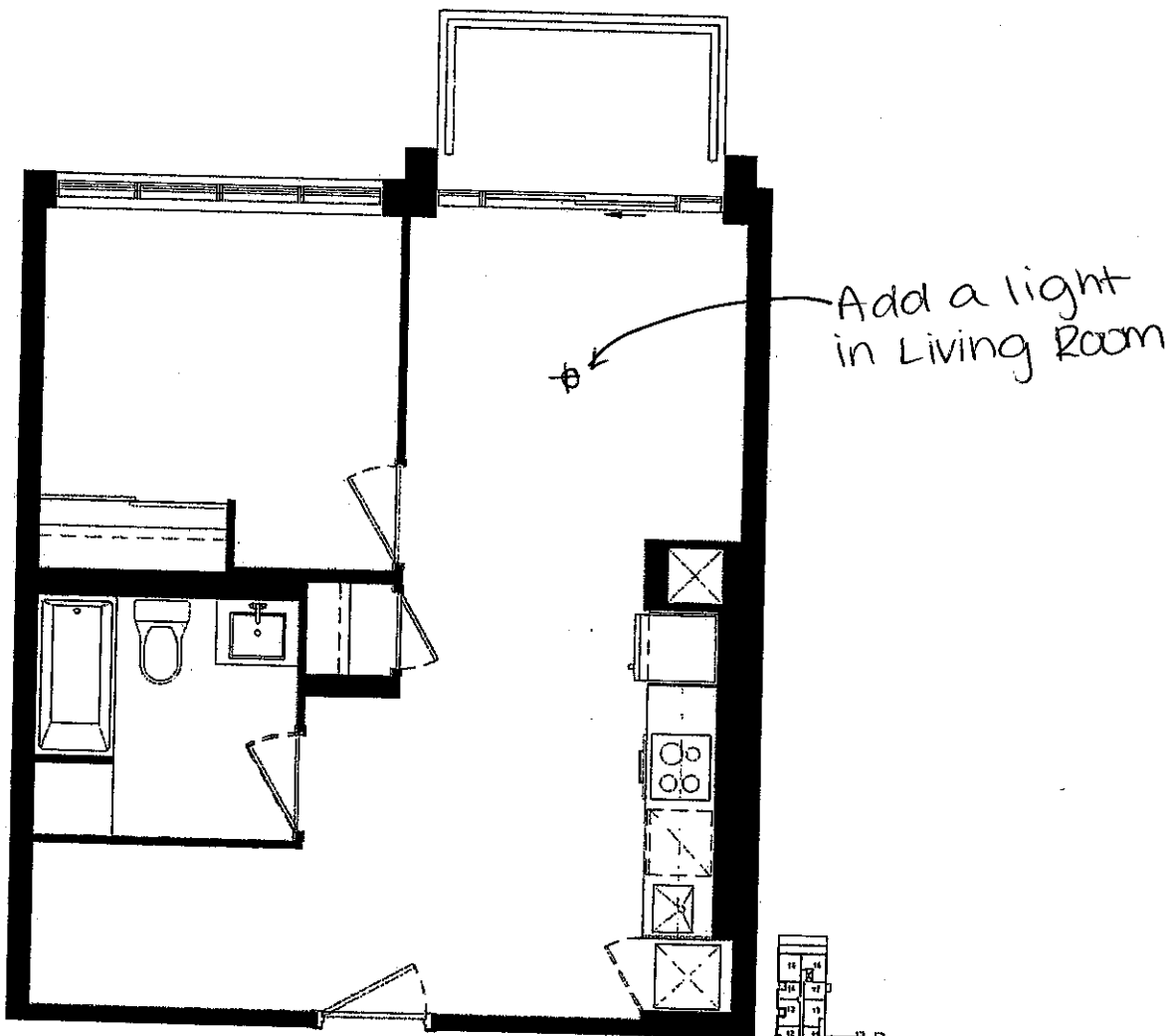


CONSTRUCTION SUMMARY		RECEIVED	
The Post - Silk Westerns Corporation		FEB 28 2023	
PURCHASERS: Vani Shree Reji GEORGE and Aaron Reji GEORGE		TEL:	
Unit 2, Level 6 (602-1)	Floor Plan B591 BF		

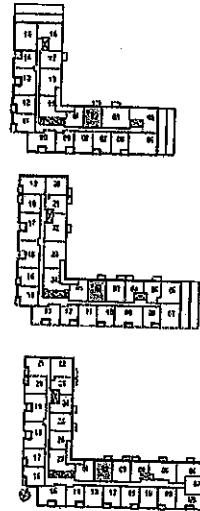
ELECTRICAL

1 - LIGHT - ADD CEILING LIGHT COMPLETE WITH FIXTURE AND SWITCH	
14Feb23 Note:	
LIVING ROOM	

This Document is Extremely Time Sensitive - Printed 24 Feb 23 at 16:19



B591 BF



### Unit 2, Level 6 Suite 602

Dimensions, specifications, layouts, location of materials and fixtures, tile floor patterns and architectural detailing (including window size and location and door size, location and swing) are approximate only and are subject to change or modifications, without notice. Actual usable floor space varies from stated floor area. Ceiling height measured from top of floor slab to underside of floor slab above and excludes finishes, bulkheads and drop ceilings. Orientation of suite may be reverse and Purchaser agrees to accept same. Balconies, terraces and patios are exclusive use common elements show for display purposes only and location and size are approximate.