

CONSTRUCTION SUMMARY

Charisma Condominiums - Dulcina Investments Inc.

RECEIVED

MAY 26 2023

TEL:

PURCHASER: 12986230 CANADA INC.

Unit 14, Level 2 (215-5)

Floor Plan
B750

CABINETRY

1 - CABINETRY PROVISION - PROVISION FOR PLUG ON ISLAND (PLUG EXTRA ORDERED SEPARATELY)

19May23 Note:

ELECTRICAL

1 - PLUG - ADD PLUG AT ISLAND

19May23 Note: SEE SKETCH

1 - LIGHT - ADD CEILING LIGHT COMPLETE WITH FIXTURE AND SWITCH

19May23 Note: LIVING ROOM

EXTRAS AS PER OFFER

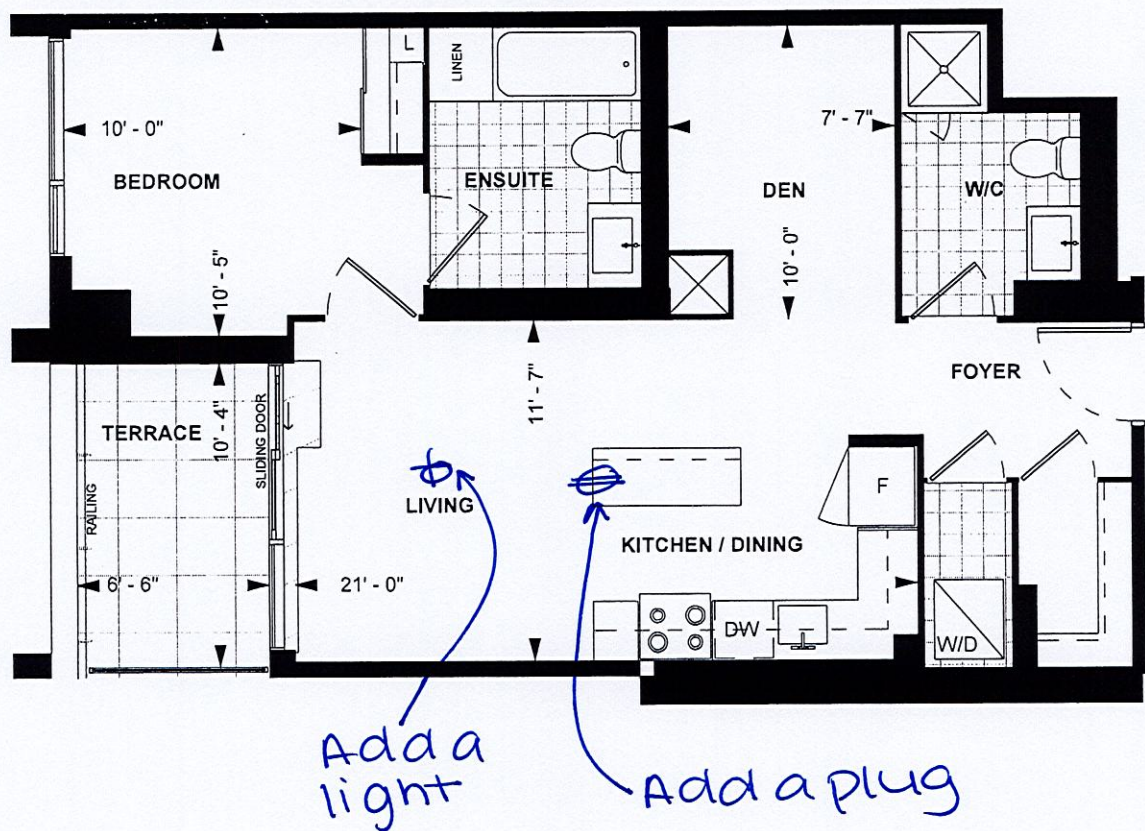
1 Parking Unit - location to be selected by the Vendor at their sole discretion.

Worksheet Note:

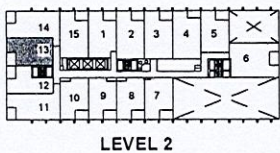
This Document is Extremely Time Sensitive - Printed 26 May 23 at 9:44

NOVEMBER 15, 2022

SCHEDULE 'A'



B750
PODIUM SUITE
8'9" CEILING
750 sq. ft.
1-BEDROOM+DEN
(BARRIER FREE)



Purchaser initials	Purchaser Initials	Date
Unit No. <u>14</u>	Level No. <u>2</u>	Suite No. <u>215</u>

Dimensions, specifications, layouts, location of materials and fixtures, tile floor patterns and architectural detailing (including window size and location and door size, location and swing) are approximate only and are subject to change or modifications, without notice. Actual usable floor space varies from slated floor area. Ceiling height measured from top of floor slab to underside of floor slab above and excludes finishes, bulkheads and drop ceilings. Orientation of suite may be reversed and Purchaser agrees to accept same. Balconies decks and terraces are exclusive use common elements shown for display purposes only and location and size are subject to change without notice. All illustrations are artist concept only. The provisions of the Agreement of purchase and sale apply to this Schedule. E. & O.E.