

★ Appliance specs attached + water line added

CONSTRUCTION SUMMARY - PARTIAL ONLY

Charisma Condominiums - Granerola Residences Ltd

PURCHASER: Andrew Alan FELDSTEIN

RECEIVED

APR 24 2024

TEL:

LOT NUMBER PH203	PHASE North	HOUSE TYPE E1948	REG. PLAN #		
---------------------	----------------	---------------------	-------------	--	--

INV#	QTY	EXTRA / CHANGE
------	-----	----------------

CABINETRY

29,699 19Apr24	2 - KITCHEN CABINETRY - PLUG PROVISION AT ISLAND Note:
29,703 19Apr24	1 - KITCHEN COOKTOP- 36" COOKTOP CABINET WITH POT DRAWERS (2 DRAWERS) - STANDARD LEVEL CABINETRY Note: See specs
29,703 19Apr24	1 - KITCHEN CABINETRY - BUILT- IN COFFEE, BUILT-IN STEAM OVEN AND BUILT-IN SINGLE WALL OVEN TOWER WITH FLUSH PROVISION - STANDARD LEVEL CABINETRY Note: See specs
29,703 19Apr24	1 - KITCHEN CABINETRY- PROVISIONS FOR 36" FRIDGE Note: See specs

ELECTRICAL

29,699 19Apr24	1 - PERIMETER LIGHTING - AS PER SKETCH NoteINCLUDES 8 DIMMER SWITCHES FOR CONFIRMATION - 1 DIMMER FOR KITCHEN/LIVING/DINING AND FOYER
29,699 19Apr24	1 - 52 POT LIGHTS - EACH ROOM ON DIMMER SWITCHES NoteMASTER WIC - 3 - DELETE STD. LIGHT SEE SKETCH FOR APPROXIMATE LOCATION OF LIGHTS CONSTRUCTION PERMITS MASTER BEDROOM - 8- STD. LIGHT ON SEPERATE SWITCH MAIN HALL - 3 - DELETE STD. LIGHT FOYER - STD. LIGHT ON SEPERATE SWITCH LIVING ROOM - 6 - STD. LIGHT ON SEPERATE SWITCH KITCHEN - 7 DINING ROOM - 6 LAUNDRY ROOM - 3 - DELETE STD. LIGHT POWDER ROOM - 2 SECOND BEDROOM - 4 -STD. LIGHT ON SEPERATE SWITCH SECOND BEDROOM ENSUITE -3
29,699 19Apr24	8 - ADD CAPPED WALL LIGHT FOR FUTURE WALL SCONCES MASTER ENSUITE - 4 POWDER ROOM - 2 SECOND BEDROOM ENSUITE - 2 Note** DELETE ALL STANDARD BATHROOM WALL LIGHTS ABOVE VANITY MIRROR SEE SKETCH
29,699 19Apr24	1 - PLUG - ELECTRICAL PLUG -DEDICATED 15 AMP - TO BE INSTALLED FOR FUTURE FIREPLACE Note**SEE SKETCH FOR LOCATION
29,699 19Apr24	1 - PLUG - ELECTRICAL PLUG -TO BE INSTALLED OVER FIREPLACE FOR FUTURE TV **SEE SKETCH FOR LOCATION NoteCABLE TO BE RELOCATED TO SAME WALL NEXT TO PLUG- SEE SKETCH
29,699 19Apr24	2 - KITCHEN ISLAND - ADD 2 ELECTRICAL PLUGS Note**SEE SKETCH
29,699 19Apr24	2 - KITCHEN ISLAND - ADD 2 CAPPED LIGHTS ABOVE ISLAND (ADDED TO EXISTING SWITCH + LIGHT) Note** 3 LIGHTS IN TOTAL - APPROX. 2 FEET APART - IF CONSTRUCTION PERMITS SEE SKETCH FOR LOCATION & 2 ADDITIONAL LIGHTS
29,699 19Apr24	1 - KITCHEN - ADD VALANCE LIGHTING UNDER UPPER CABINETS Note:

CONSTRUCTION SUMMARY - PARTIAL ONLY

Charisma Condominiums - Granerola Residences Ltd.

PURCHASER: Andrew Alan FELDSTEIN

TEL:

LOT NUMBER	PHASE	HOUSE TYPE	REG. PLAN #		
PH203	North	E1948			

INV#	QTY	EXTRA / CHANGE	
------	-----	----------------	--

ELECTRICAL

29,699 19Apr24	4 - ADD RECESSED ELECTRICAL PLUGS ABOVE ALL BATHROOM SINKS FOR FUTURE MIRRORS - APPROX 28" ABOVE VANITY -CONNECTED TO SWITCH- IF CONSTRUCTION PERMITS NoteMASTER ENSUITE X2 SEE SKETCH FOR LOCATION BEDROOM X1 SECOND BEDROOM ENSUITE X1
29,699 19Apr24	1 - VANITY IN MASTER WIC- ADD ELECTRICAL PLUG FOR FUTURE BAR FRIDGE Note: SEE SKETCH FOR LOCATION
29,699 19Apr24	1 - MASTER ENSUITE - ADD ELECTRICAL PLUG FOR FUTURE TOWEL WARMER NoteSEE SKETCH
29,699 19Apr24	1 - PLUG - ELECTRICAL PLUG -TO BE INSTALLED IN MASTER BEDROOM 5 FEET FROM FINISHED FLOOR FOR FUTURE TV RELOCATE CABLE NEXT TO PLUG **SEE SKETCH FOR LOCATION Note:
29,699 19Apr24	1 - ELECTRICAL CONNECTIONS FOR COOKTOP, BUILT IN COFFEE, BUILT -IN STEAM OVEN & BUILT-IN SPEED OVEN Note: <div>See specs</div>
29,699 19Apr24	1 - PLUG - ELECTRICAL PLUG -DEDICATED 20AMP NoteSEE SKETCH FOR LOCATION BEDROOM 2

PLUMBING

29,725 25Apr24	1 - KITCHEN STEAM OVEN ROUGH-IN PROVISION FOR WATERLINE AND DRAIN LINE Note: <div>New ★ See specs attached</div>
29,703 19Apr24	1 - MOEN- 90 DEGREE - EXACT TEMP 3/4 THERMOSTATIC VERTICAL SPA WITH 4 BODY SPRAYS TS3100/S3600(X3)/S3371/TS3300(X3)/S3879EP/A721/S13000(X4)/TS1320(X4) MOEN- 12" RAINSHOWER WITH IMMERSION (X2) - CEILING MOUNT RAINSHOWER S1004/116651/147572 -CHROME NoteMASTER ENSUITE
29,703 19Apr24	1 - MOEN- 90 DEGREE - EXACT TEMP 3/4 THERMOSTATIC VERTICAL SPA WITH 4 BODY SPRAYS TS3100/S3600(X3)/S3371/TS3300(X3)/S3879EP/A721/S13000(X4)/TS1320(X4) MOEN- 12" RAINSHOWER WITH IMMERSION (X1)- CEILING MOUNT RAINSHOWER S1004/116651/147572 -CHROME NoteSECOND BEDROOM ENSUITE
29,703 19Apr24	1 - MOEN- ARRIS - SINGLE HANDLE FREE STANDING TUB FILLER FAUCET TS50100/S93005 - CHROME 72" METAL HOSE KIT - #210007 Note:
29,703 19Apr24	2 - CURBLESS SHOWER & INFINITY DRAIN LINEAR - SLOT - SHOWER DRAIN - MATTE BLACK MASTER ENSUITE SECOND BEDROOM ENSUITE Note:

CONSTRUCTION SUMMARY - PARTIAL ONLY

Charisma Condominiums - Granerola Residences Ltd.

PURCHASER: Andrew Alan FELDSTEIN TEL:

LOT NUMBER	PHASE	HOUSE TYPE	REG. PLAN #		
PH203	North	E1948			
INV#	QTY	EXTRA / CHANGE			

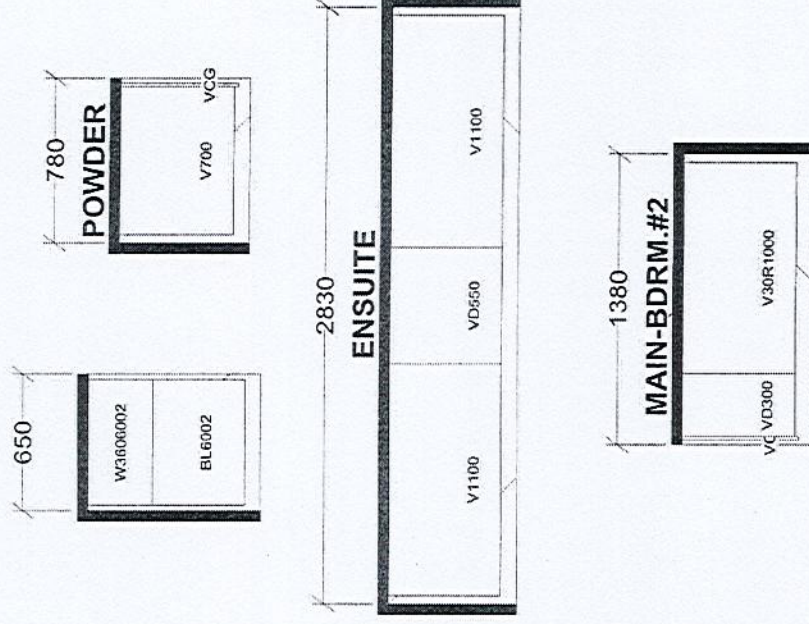
PLUMBING

29,703	1 - MASTER ENSUITE - FREESTANDING TUB - KNIEF - SIT - WHITE GLOSSY
19Apr24	Note:*** SEAT/ BACK REST (HIGHEST POINT OF TUB) TOWARDS THE DOOR
29,703	3 - AVENUE - EGLINTON - WALL HUNG TOILET - CTL-3130A-WL-FB-110 CHROME PUSH BUTTON
19Apr24	MASTER ENSUITE POWDER ROOM SECOND BEDROOM ENSUITE Note:
29,703	1 - KITCHEN - WATERLINE ROUGH-IN FOR FRIDGE
19Apr24	Note:

This Document is Extremely Time Sensitive - Printed 25 Apr 24 at 13:50

THIS LAYOUT CONTAINS EXTRAS
THAT ARE NOT PART OF CONTRACT

PROTOTYPE FOR EXTRAS

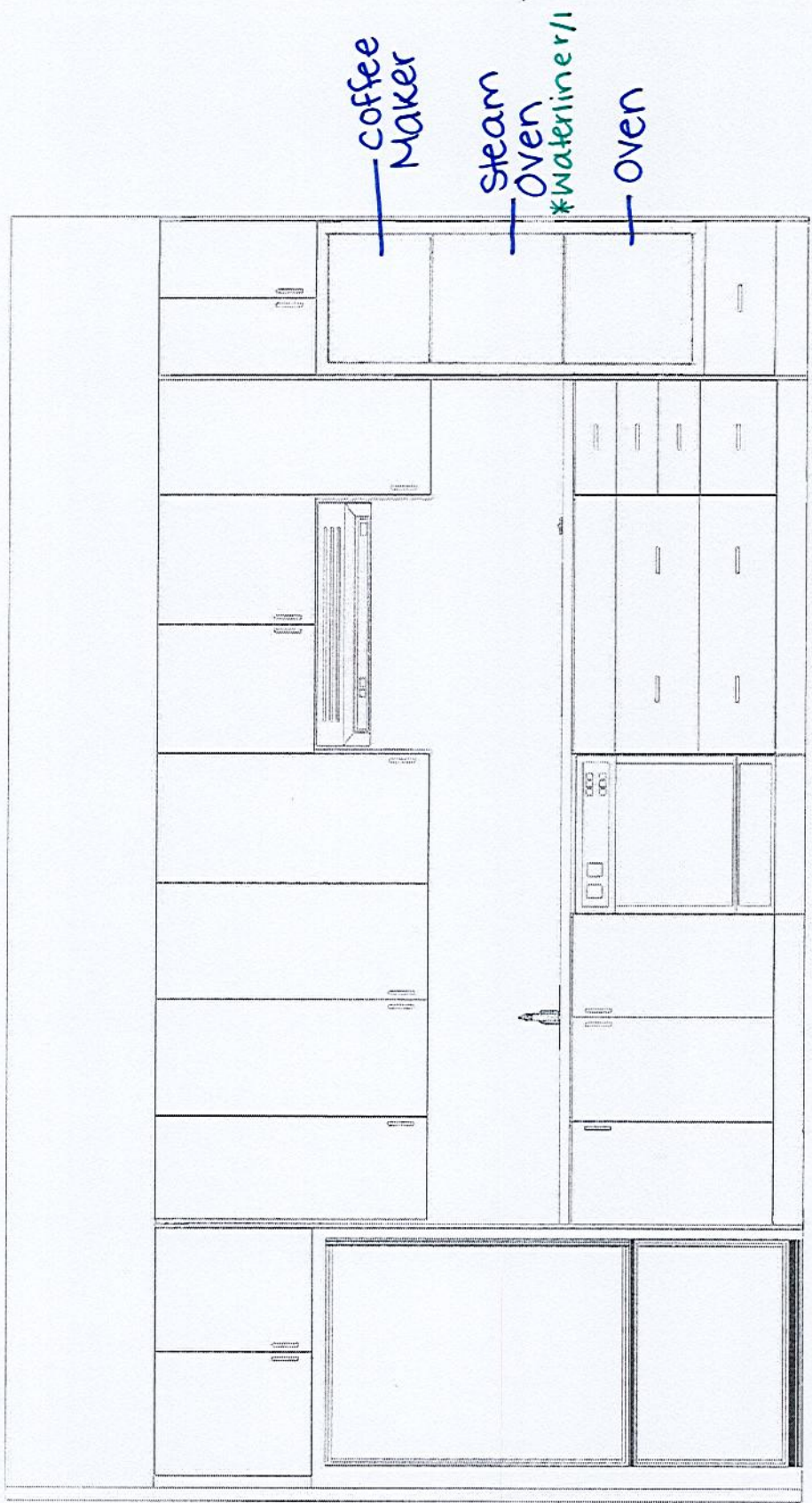


KITCHEN

BASE & VANITY CABINETS ON ADJUSTABLE LEGS

PENTHOUSE SUITES
NORTH TOWER X1
SOUTH TOWER X1


S e l b a I n d u s t r i e s J #	
W WIDTH	W HGT
FLOOR HGT	DOOR HGT
ST CENT	2X4
VENT BOX COVER	
This drawing is the intellectual property of SELBA INDUSTRIES INC. and is an original design which must not be released or copied unless applicable fee has been paid to Selba Industries Inc. DESIGNER: KS DATE: JAN 6 22/ rev'd Sept 6 22 arch review	
JOB NUMBER: BUILDER: GREENPARK SITE: GRANEROLA NORTH & SOUTH MODEL: PENTHOUSE E1948 X LOT #: PH 203 NORTH	



30" Fridge.
*Waterline r/l

36" Cooktop

— coffee
Maker
— steam
Oven
*Waterline r/l
— oven

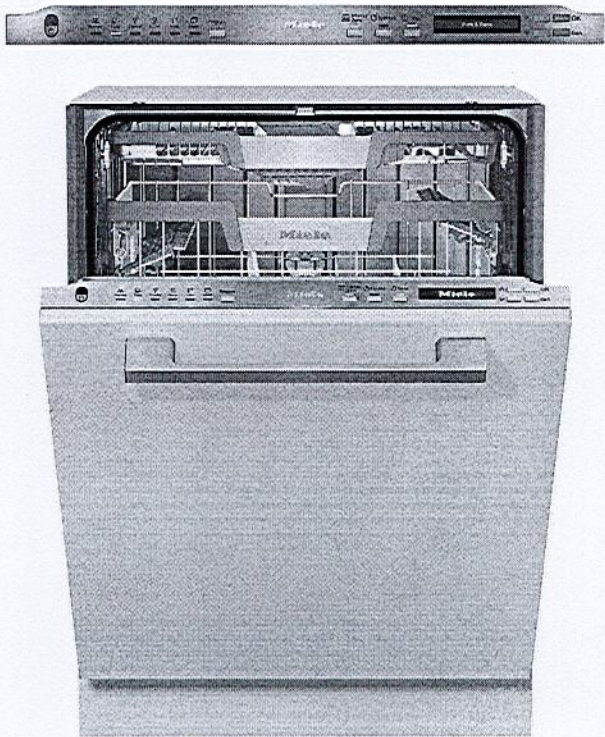
This drawing is the intellectual property of SELBA INDUSTRIES INC. and is an artistic interpretation of the general appearance of the design. It is not meant to be an exact rendition.	 Selba Kitchen + Bath Designs	Designed: 4/25/2024 Printed: 4/26/2024	
		LAYOUT	Drawing #: 1



G 7156 SCVi
24" Fully Integrated Dishwasher

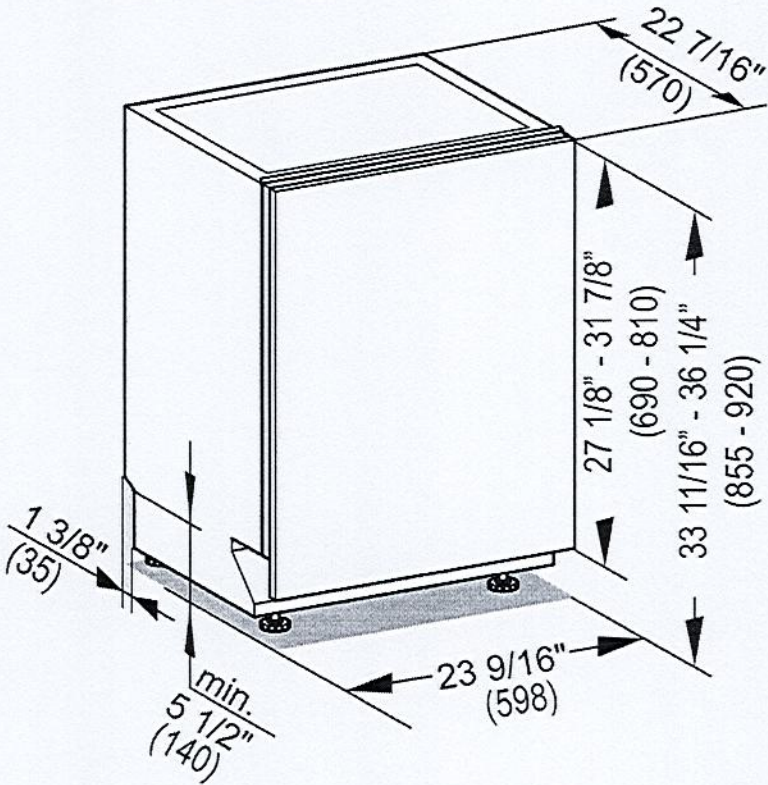
- Features:
- DirectSelect Controls
 - QuickIntenseWash - a full wash and dry cycle in 58 minutes
 - 40 dBa (38 dBa when using ExtraQuiet)
 - 3D MultiFlex Cutlery Tray
 - Panel-Ready
 - Water Softener
 - EnergyStar

MATERIAL #
11387590



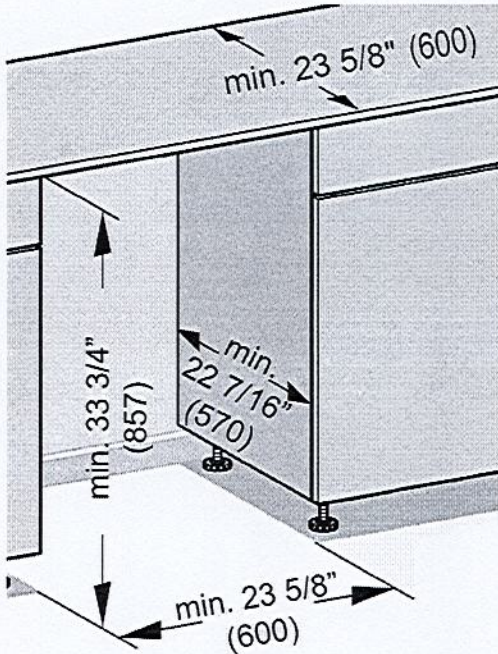
SPECIFICATIONS	
Overall Unit Dimensions	23 ⁹ / ₁₆ " (598 mm) W x 33 ¹¹ / ₁₆ " - 36 ¹ / ₄ " (855 - 920 mm) H x 22 ⁷ / ₁₆ " (570 mm) D [Depth does not include door panel]
Niche	
Minimum Cabinet Niche Opening	23 ⁵ / ₈ " (600 mm) W x 33 ³ / ₄ " (857 mm) H x 22 ⁷ / ₁₆ " (570 mm) D
Plumbing	
Water Supply Requirements	<ul style="list-style-type: none">• Cold or Hot (max 150°F/65°C) water connection• Male 3/8" compression fitting• Water pressure range 7.25 psi (0.5 bar) and 145 psi (10 bar)
Water Connection Line (Supplied)	Length: 5 ft (1.5 m) Female 3/8" compression.
Drain Hose (Supplied)	Length: 5 ft (1.5 m) 7/8" (22 mm) internal diameter
Electrical	
Electrical Requirements	110V / 120V, 60Hz, 15 Amps
Power Cord (Convertible to hardwire)	NEMA 5-15 plug, 5 ft (1.52 m)
Shipping	
Shipping Weight	121 lbs (55 kg)
Shipping Dimensions	27 ¹ / ₈ " W x 38 ¹ / ₈ " H x 26 ³ / ₈ " D

PRODUCT DIMENSIONS

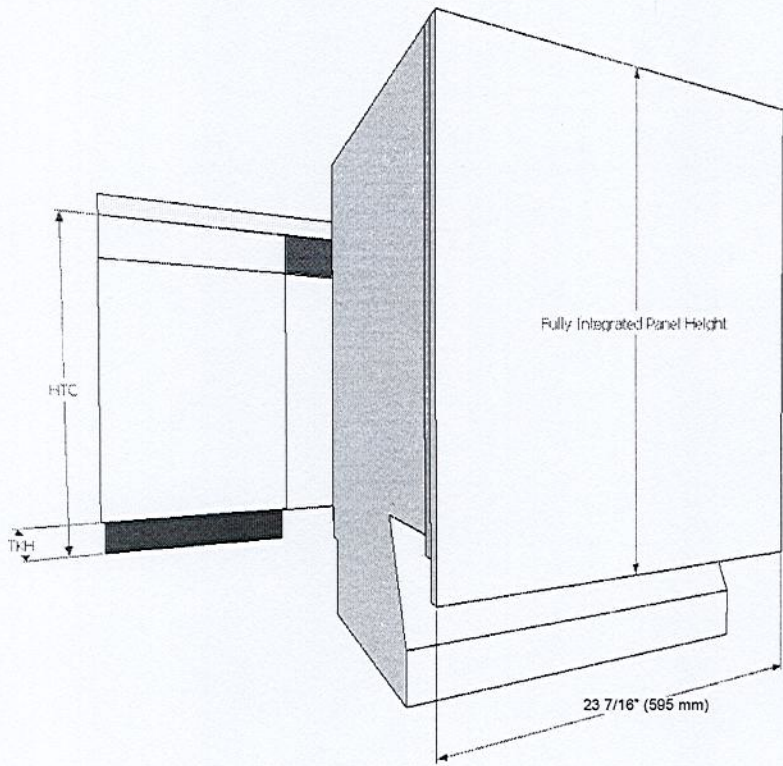




CUTOUT DIMENSIONS



CUSTOM PANEL



Width: 23 7/16" (595 mm) in all Cases
Thickness: 3/4" (19 mm) in all Cases
Height: Determined using the following calculation:

Panel Height = HTC – TKH

HTC = Height to the underside of countertop
TKH = Toe kick height

Note: Control panel is along the top edge of the unit. It is not visible when the unit is closed. A handle **MUST** be located on front of panel in order to open unit. (Except K2o models).

- Maximum panel height: 31 7/8" (810 mm)
- Minimum panel height: 27 1/8" (690 mm)
- Maximum panel weight: 22 lbs (10 kg)

36" DESIGNER OVER-AND-UNDER REFRIGERATOR/FREEZER WITH ICE MAKER AND INTERNAL DISPENSER - PANEL READY

SUB-ZERO

DET3650CIID



FEATURES

- Split Climate™ intelligent cooling system revolutionizes Sub-Zero's already-superior preservation capabilities, keeping food even fresher for longer
- ClearSight™ LED lighting system fully illuminates the interior and reduces shadows
- Sleek stainless accents trim the interior, matching the sophistication of the exterior
- Easily customize settings—from lighting to humidity—with the tap of a finger via the conveniently accessible touch control panel
- Night Mode optimizes the interior lighting based on the detected ambient light, reducing the brightness by 90% in dim environments
- Lift the base of the flip-up dairy compartment to store taller items on the shelf below
- Delivers fresh-tasting, filtered water through an internal dispenser located discreetly within the refrigerator
- Fresh-tasting, filtered ice ready on-demand and activate Max Ice Mode to temporarily increase ice production
- Position adjustable door shelves at various heights to accommodate assorted items
- Nano coating lines the perimeter of each glass shelf to create a hydrophobic barrier that helps contain spills
- The easily accessible NASA-inspired air purification system scrubs the air of ethylene and odor every 20 minutes
- Wi-Fi enabled for convenient remote access using the Sub-Zero Group Owner's App
- Sub-Zero offers an industry-leading full two-year warranty on appliances, along with a full five-year sealed system warranty
- Accepts custom panels for an integrated look within cabinetry or stainless-steel accessory panels and handles to match other Sub-Zero, Wolf, and Cove products*

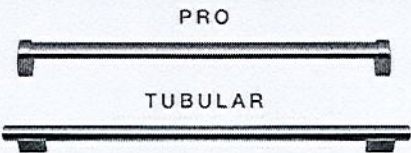
ACCESSORIES

- Egg Container
- Reduced Toekick Divider
- Stainless Steel Side Panel
- Water Filter
- Dual Installation Kits
- Stainless Steel Dual Installation Kickplates
- Stainless Steel Door and Drawer Panels with Pro Handle
- Stainless Steel Door and Drawer Panels with Tubular Handle
- Stainless Steel Pro and Tubular Handles

Accessories are available through an authorized dealer.
For local dealer information, visit subzero-wolf.com/locator.



HANDLE ACCESSORIES



PRODUCT DETAILS

REFRIGERATOR

- LED refrigerator and freezer lights
- 4 glass refrigerator shelves (3 adjustable; 1 stationary)
- Crisper drawer with adjustable dividers
- 3 door bins (2 adjustable; 1 stationary)
- 1 flip-up dairy compartment
- Internal water dispenser

FREEZER

- 2 full-extension roll-out freezer drawers; one with adjustable dividers
- Automatic ice maker with removable ice container

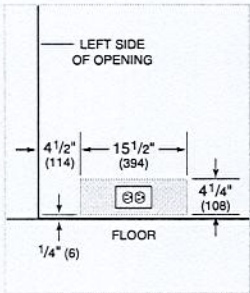
36" DESIGNER OVER-AND-UNDER REFRIGERATOR/FREEZER WITH ICE MAKER AND
INTERNAL DISPENSER - PANEL READY



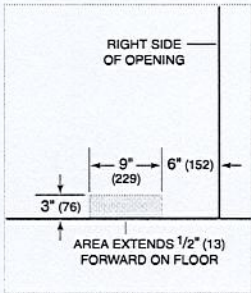
PRODUCT SPECIFICATIONS

Model	DET3650CIID
Dimensions	36"W x 84"H x 24"D
Refrigerator Capacity	13.3 cu. ft.
Freezer Capacity	6.3 cu. ft.
Weight	460 lbs
Electrical Supply	115 VAC, 60 Hz
Electrical Service	15 amp dedicated circuit
Plumbing Supply	1/4" OD copper, braided stainless steel or PEX tubing
Plumbing Pressure	35–120 psi

ELECTRICAL



PLUMBING

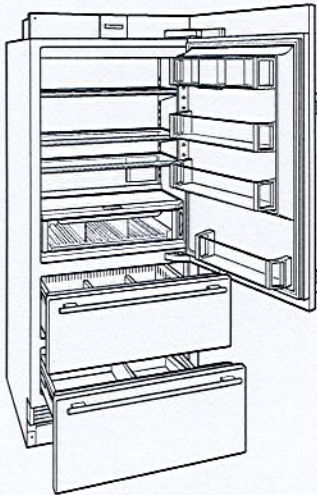


NOTE: The electrical outlet must be positioned with the grounding prong to the right of the thinner blades.

PANEL SPECIFICATIONS For complete panels specifications including width/height, weight requirements and thickness requirements visit subzero-wolf.com/reveal.

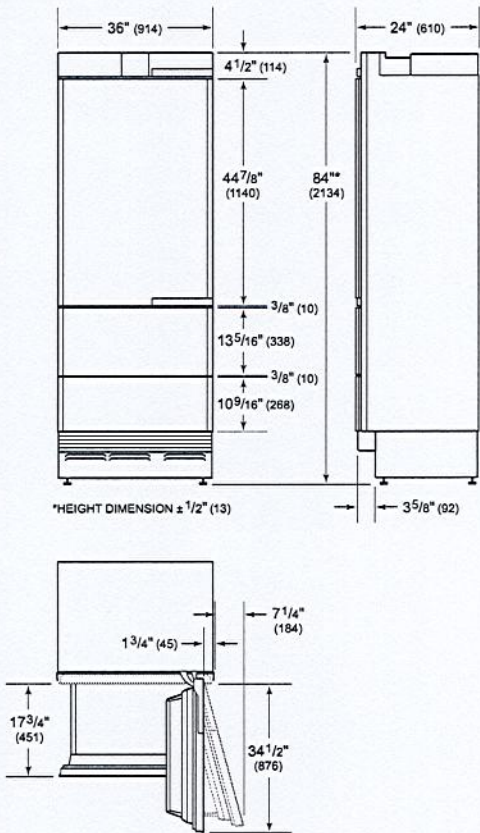
NOTE: Dimensions in parenthesis are in millimeters unless otherwise specified

INTERIOR VIEW

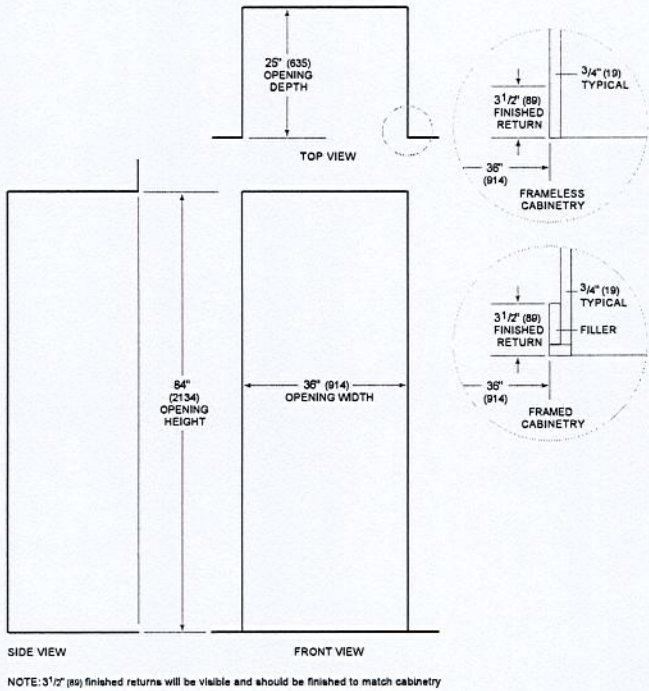


This illustration is intended for interior reference only and may not represent the exterior of the model being specified.

DIMENSIONS



STANDARD INSTALLATION



36" TRANSITIONAL INDUCTION COOKTOP



C136560T/S

FEATURES

Consistent, precise control and nearly instantaneous temperature response

More efficient heat transfer—energy is supplied directly to the cookware

Intuitive, full-color LCD touchscreen controls are sleek and easy to use

17 power settings enhance precision with half increment adjustments

Sensors regulate consistent low heat for simmering, melting, and warming without scorching

Independent cooking zone timers make it easy to prepare a variety of dishes at once

Boost Mode delivers rapid heat for 40% faster boil times, surpassing the speed of gas or electric

Bridge two cooking zones into one larger surface for induction-capable griddles, open roasters, and fish poachers

Sleek, subtle surface graphics make it easy to properly center cookware

The pause feature suspends the cooktop and all timers for up to 10 minutes

Turn off an individual cooking zone with two quick taps or power off the entire cooktop surface with one tap

Cooktop controls automatically lock when not in use for increased safety

Sleek black glass surface resists scratching, staining, impact, and heat

Because spills don't stick to the surface, cleanup is quick and easy



COOKTOP SPECIFICATIONS

- Brushed stainless trim
- Black ceramic glass surface
- Sensor based simmer, melt, and keep warm modes
- Boost Mode for rapid heat
- 4 - 8" 2,100 Watt element with 3,700 W boost
- 1 - 11" 2,600 W Zone with 3,700 W Boost

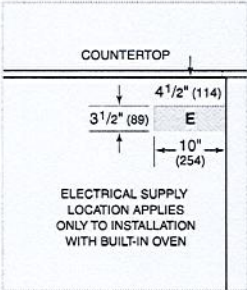
36" TRANSITIONAL INDUCTION COOKTOP



PRODUCT SPECIFICATIONS

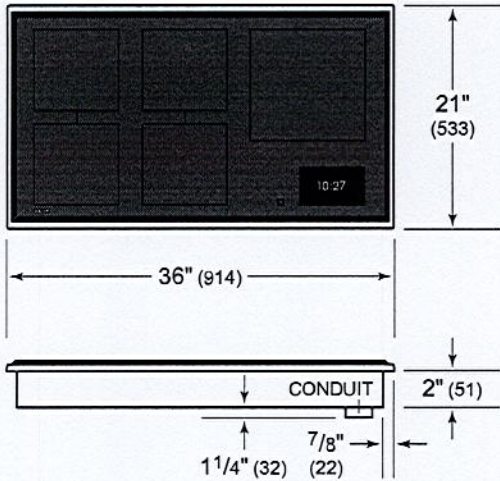
Model	CI36560T/S
Dimensions	36"W x 2"H x 21"D
Weight	61 lbs
Electrical Supply	3-wire, 240/208 VAC, 60 Hz
Electrical Service	50 amp dedicated circuit
Conduit Length	4 Feet

ELECTRICAL

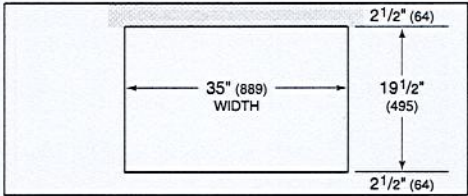


NOTE: Dimensions in parenthesis are in millimeters unless otherwise specified

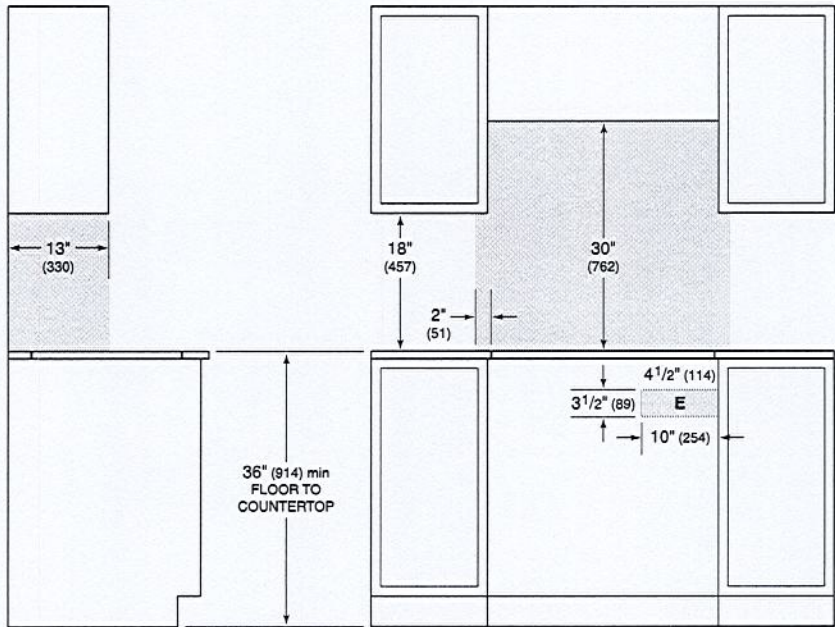
DIMENSIONS



STANDARD INSTALLATION



COUNTERTOP CUT-OUT



SIDE VIEW

FRONT VIEW

NOTE: Shaded area above countertop indicates minimum clearance to combustible surfaces, combustible materials cannot be located within this area.
Electrical supply location only applies to installations with built-in oven.

30" M SERIES CONTEMPORARY STAINLESS STEEL COFFEE SYSTEM

WOLF

EC3050CM/S

FEATURES

Full-color touchscreen simplifies use and adds refinement to the design

Save favorites within six independent user profiles for a perfect cup that's just a touch or two away

Easily customize every aspect of your beverage, including type, strength, temperature, quantity, and milk preference

Beverage options include Americano, Cappuccino, Coffee, Doppio, Espresso, Flat White, Hot Milk, Hot Water, Latte, Latte Macchiato, Long Coffee, Macchiato, Milk Froth, Steam

Insulated milk container with light-to-thick froth regulator

Accepts whole bean or ground coffee

The large 84.5-ounce water tank yields 6 cups of 9 oz coffee before needing to be refilled

Dual-dispensing spout easily adjusts to the height of your cup

Self-cleaning system ensures your perfect cup is only moments away—no cumbersome cleanup

Discreet in-unit storage

Installs nearly anywhere—without special water lines

The elegant, modern aesthetic perfectly pairs with a full suite of similarly styled Sub-Zero, Wolf, and Cove appliances

Built with premium-grade materials, Wolf products are designed to last a minimum of 20 years

ACCESSORIES

Care Kit

Charcoal Filter

Descaling Solution

Insulated Milk Container

Accessories available through an authorized dealer.

For local dealer information, visit subzero-wolf.com/locator.

Specifications are subject to change without notice. This information was generated on April 23, 2024. Verify specifications prior to finalizing your cabinetry/enclosures.

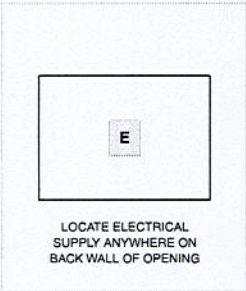
30" M SERIES CONTEMPORARY STAINLESS STEEL COFFEE SYSTEM



PRODUCT SPECIFICATIONS

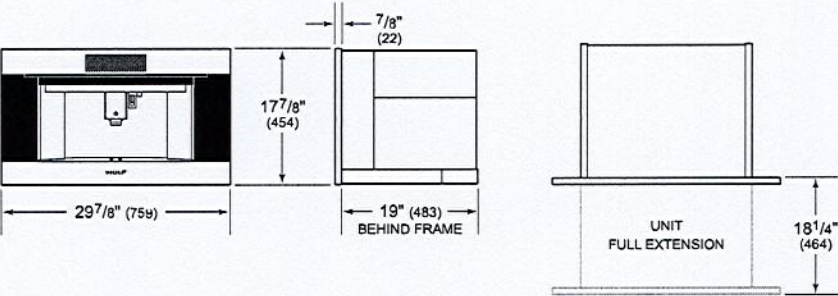
Model	EC3050CM/S
Dimensions	29 7/8"W x 17 7/8"H x 19"D
Weight	76 lbs
Electrical Supply	120 VAC, 60 Hz
Electrical Service	15 amp dedicated circuit
Power Cord Length	6 Feet
Receptacle	3-prong grounding-type

ELECTRICAL

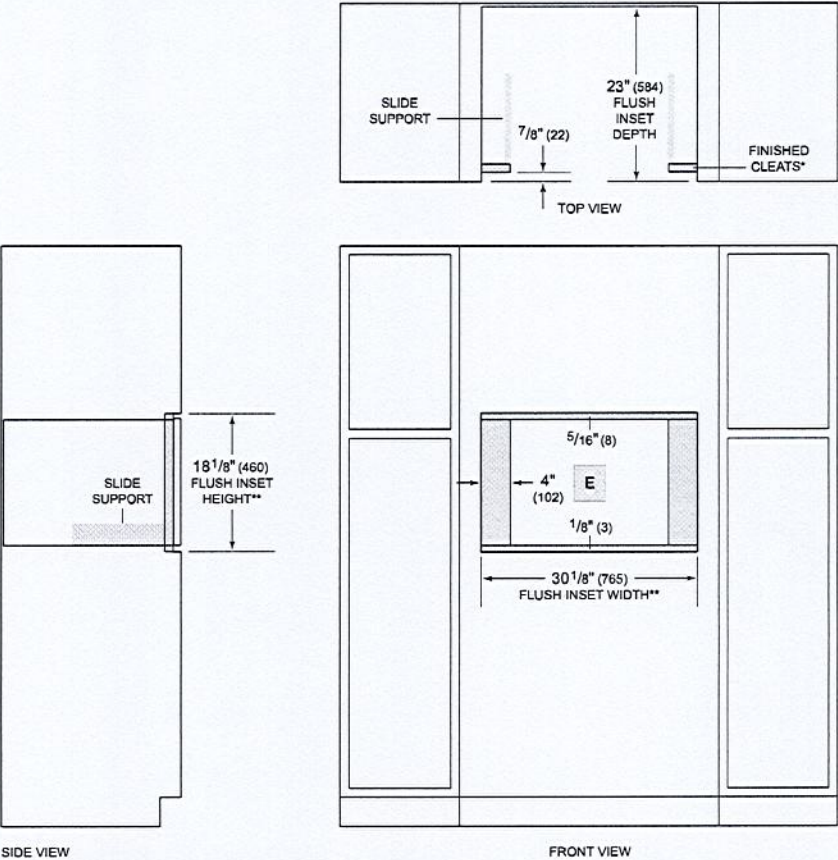


NOTE: Dimensions in parenthesis are in millimeters unless otherwise specified

DIMENSIONS



FLUSH INSTALLATION



*Will be visible and should be finished to match cabinetry.
**Dimension provides minimum reveals.

30" M SERIES CONTEMPORARY STAINLESS STEEL BUILT-IN SINGLE OVEN



SO3050CM/S



FEATURES

Preheats faster and cooks more consistently across all racks due to its advanced Dual VertiFlow™ convection system

Assures predictably delicious results with a variety of modes, including Convection Roast, Proof, and Dehydrate

Prepares 50 popular dishes with the Gourmet feature that automatically adjusts cook times and temperatures

Handles multiple dishes simultaneously with our largest capacity oven (13 percent larger)

Insert a temperature probe to tell you exactly when it is done—and in Gourmet Mode, it will alert you the moment the dish is ready.

Uncomplicate cooking with innovative, interactive color touchscreen controls

Blends in with a sleek black glass, handleless design

Integrates beautifully into surrounding cabinetry with flush installation

Ensures excellent visibility via three bright halogen lights and large, triple-panel-glass door windows

Master your technique with tips and recipes from the Mastering the M Series Oven guide

ACCESSORIES

30" Broiler Pan

30" Full-Extension Ball-Bearing Oven Rack

30" Premier Baking Sheet

30" Standard Oven Rack

Bake Stone Kit

Dehydration Kit

Dual Installation Kit

Multi-Function Pan

Temperature Probe

Accessories available through an authorized dealer.
For local dealer information, visit subzero-wolf.com/locator.



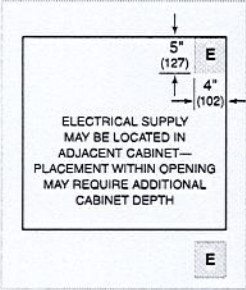
30" M SERIES CONTEMPORARY STAINLESS STEEL BUILT-IN SINGLE OVEN



PRODUCT SPECIFICATIONS

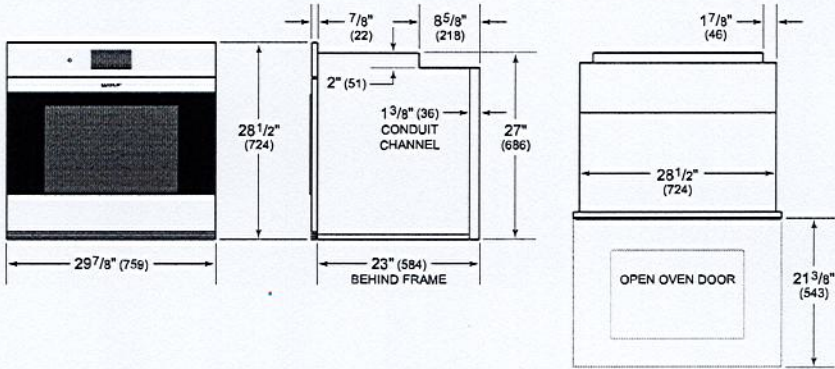
Model	SO3050CM/S
Dimensions	29 7/8"W x 28 1/2"H x 23"D
Oven 1 Interior Dimensions	25 1/4"W x 17 1/2"H x 19 7/8"D
Overall Capacity	5.1 cu. ft.
Usable Capacity	3.3 cu. ft.
Door Clearance	21 3/8"
Electrical Supply	240/208 VAC, 60 Hz
Electrical Service	30 amp dedicated circuit
Conduit Length	4 Feet

ELECTRICAL

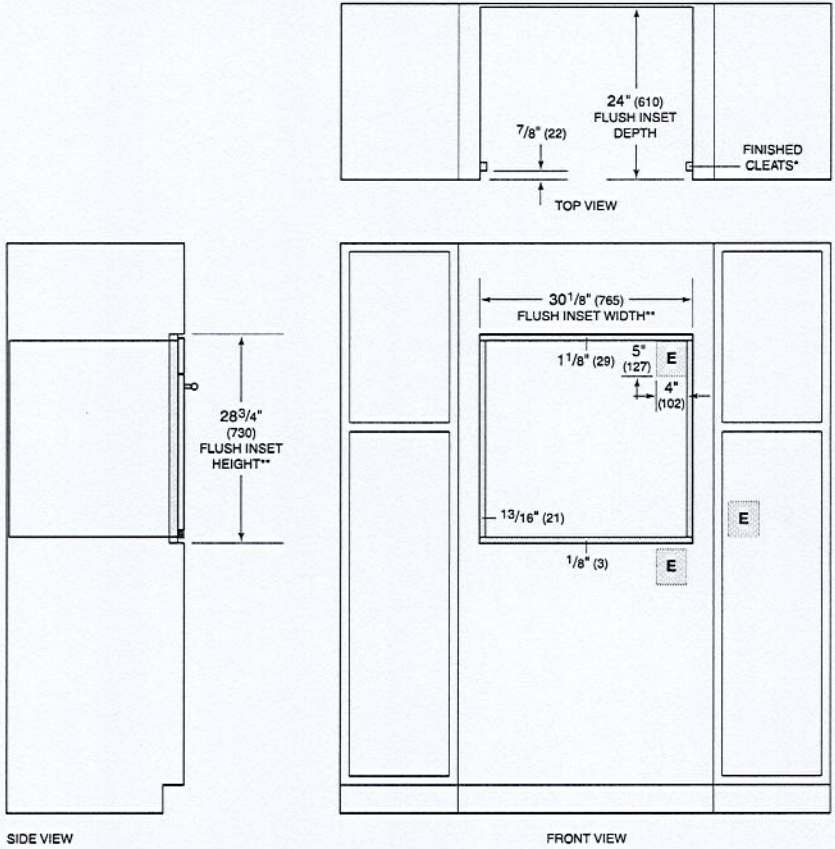


NOTE: Dimensions in parenthesis are in millimeters unless otherwise specified

DIMENSIONS



FLUSH INSTALLATION



*1" (25) minimum depth. Shaded areas will be visible and should be finished to match cabinetry.
**Dimension provides minimum reveals.
NOTE: Location of electrical supply within opening may require additional cabinet depth.

30" M SERIES CONTEMPORARY STAINLESS STEEL HANDLELESS
CONVECTION STEAM OVEN - PLUMBED



CSOP3050CM/S

FEATURES

The elegant, modern aesthetics pair perfectly with a full suite of similarly styled Sub-Zero, Wolf, and Cove appliances

Contemporary styling features a completely handleless look that incorporates a motorized door system

Plumbed and non-plumbed options for maximum installation flexibility

Full-color touchscreen simplifies use

The door opens and closes quietly for an elevated experience

Save up to 50 personalized favorite recipe presets

Cooking modes include Steam, Convection, Broil, Slow Roast

Oven features a 1750-watt recessed broil element with multiple settings

2.4 cubic-foot oven cavity allows multiple dishes to be placed side by side at once

1889-watt dual convection system ensures even, multi-rack baking and consistent results

Three full-extension rack positions and one standard position allow easy access and increased cooking flexibility

The temperature probe alerts you when your dish has reached the desired temperature

ACCESSORIES

Broiler Rack

Descaling Solution

Enameled Broil Pan

Perforated Pan - 12 3/4" x 1 1/2" x 7"

Perforated Pan - 24 3/4" x 1 3/8" x 14 1/2"

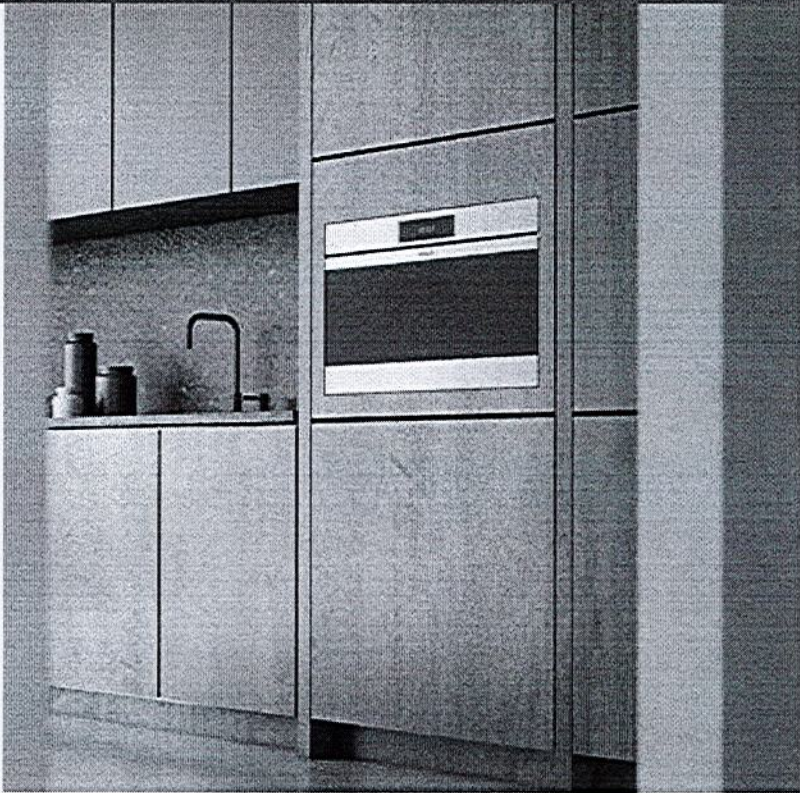
Solid Pan - 12 3/4" x 1 1/2" x 7"

Solid Pan - 24 3/4" x 1 3/8" x 14 1/2"

Standard Oven Rack

Temperature Probe

Accessories available through an authorized dealer.
For local dealer information, visit subzero-wolf.com/locator.



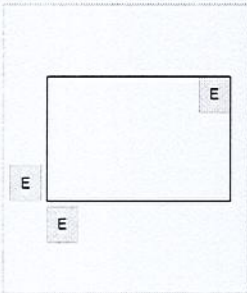
30" M SERIES CONTEMPORARY STAINLESS STEEL HANDLELESS CONVECTION STEAM OVEN - PLUMBED



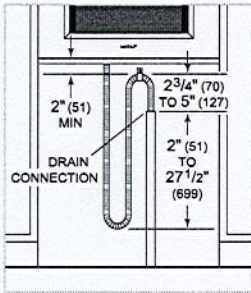
PRODUCT SPECIFICATIONS

Model	CSOP3050CM/S
Dimensions	29 7/8"W x 17 7/8"H x 22 1/2"D
Oven Interior Dimensions	25 1/4"W x 10 3/4"H x 15 1/8"D
Overall Capacity	2.4 cu. ft.
Usable Capacity	1.8 cu. ft.
Door Clearance	14 3/16"
Weight	91 lbs
Electrical Supply	240/208 VAC, 60 Hz
Electrical Service	20 amp dedicated circuit
Drain Line TestSpec	10' (3 m) corrugated drain tubing
Plumbing Supply	6.5' (2 m) braided tubing with 3/8" female compression fitting
Plumbing Pressure	15–145 psi
Conduit Length	4 Feet

ELECTRICAL

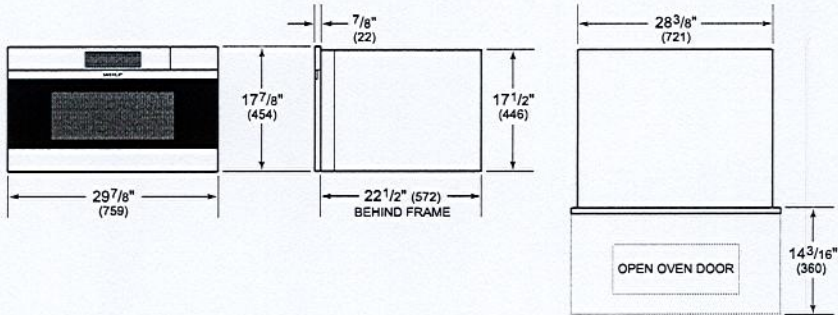


PLUMBING

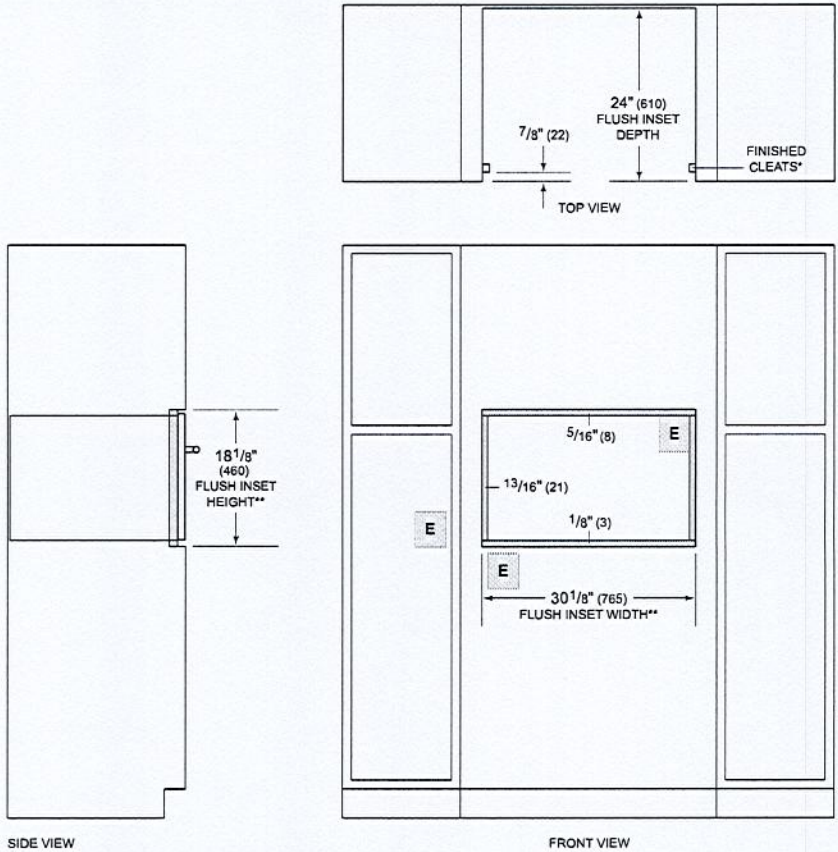


NOTE: Dimensions in parenthesis are in millimeters unless otherwise specified

DIMENSIONS



FLUSH INSTALLATION



***Will be visible and should be finished to match cabinetry.*
***Dimension provides minimum reveals.*
NOTE: Location of electrical supply within opening may require additional cabinet depth.