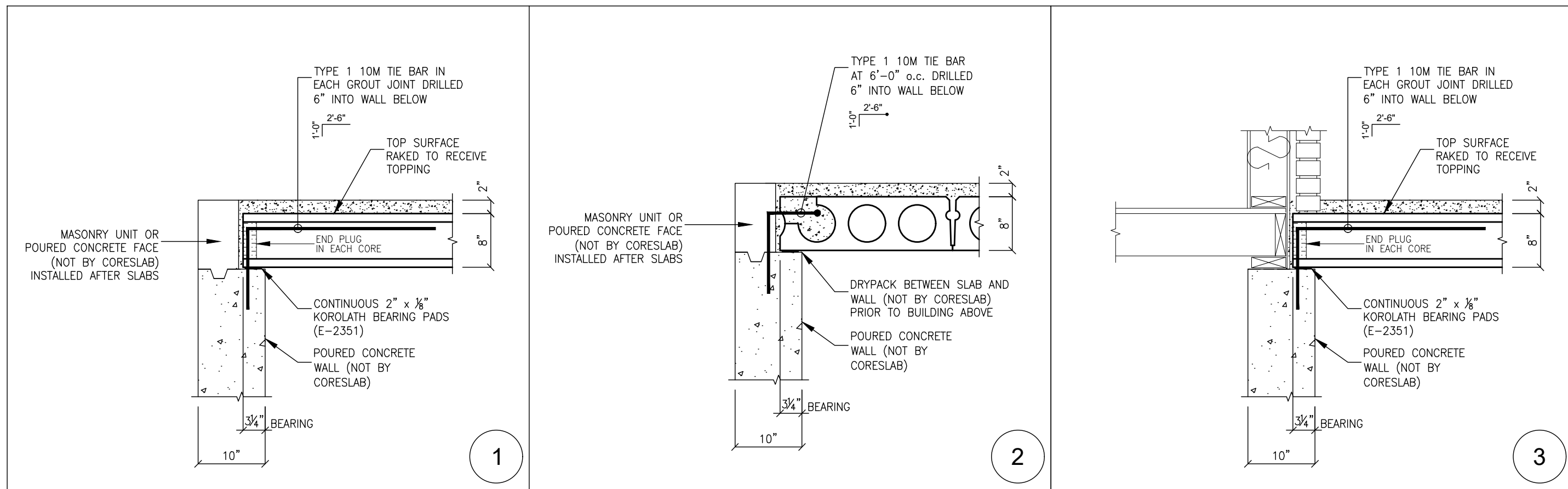


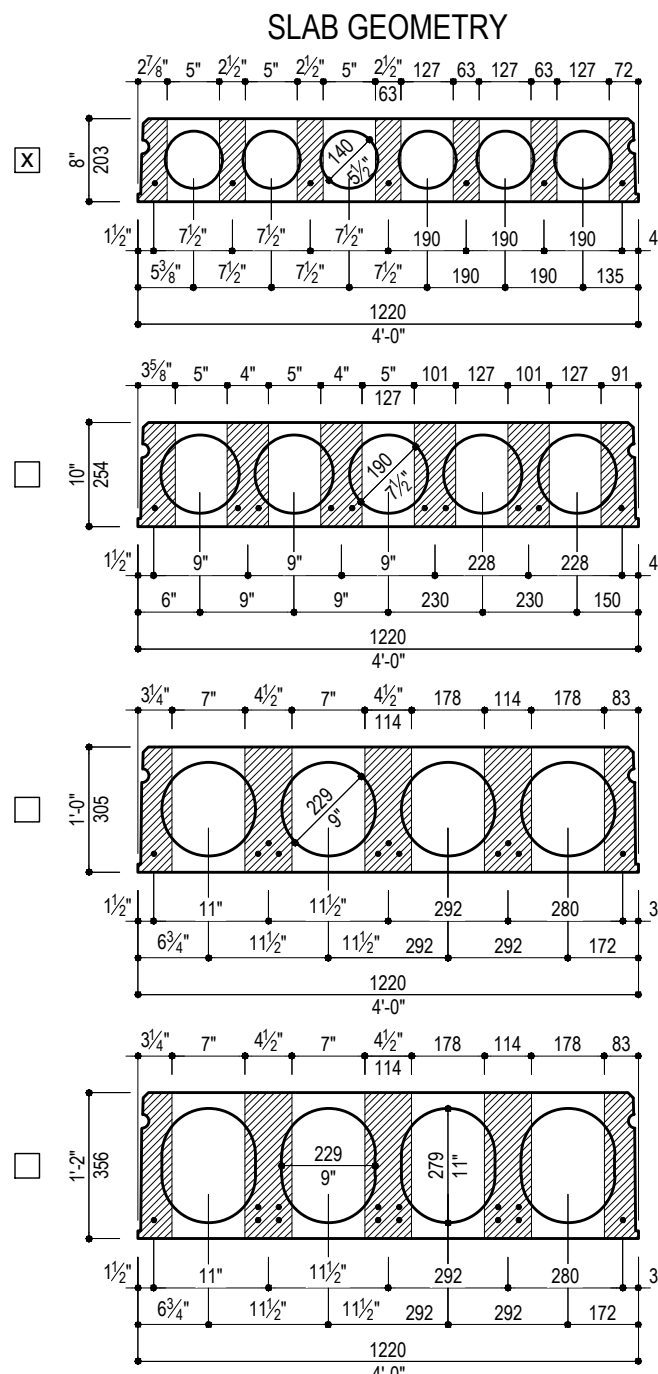
MAIN FLOOR PLAN

LEVEL 1



SECTIONS

ITEM	SUPPLIED		INSTALLED	
	OTHERS	CORES LAB	OTHERS	CORES LAB
HOLLOWCORE		✓		✓
SOLID SLABS		N/A		
BALCONIES		N/A		
LANDINGS		N/A		
STAIRS		N/A		
TIE STEEL		✓		✓
POINTING AND CAULKING		N/A		
BEARING PADS		KOROLATH		✓
GROUTING		✓		✓
PLUMBMECH OPENINGS		6" DIA MAX		
FLOOR FINISHING		N/A		
HANGERS & MISC. STEEL		N/A		



PENETRATIONS:
OPENINGS 6" (152mm) AND LARGER MUST BE SHOWN ON PLAN
OPENINGS SHOWN ON PLAN ARE ROUGH OPENING SIZES
OPENINGS 5" (127mm) AND SMALLER NEED NOT BE SHOWN ON PLAN PROVIDED THEY DO NOT OCCUR WITHIN THE SHADED PORTIONS (SEE ABOVE).
SLAB GEOMETRY (ABOVE) MUST BE REFERENCED TO CO-ORDINATE LOCATIONS AND SPACING OF OPENINGS TO AVOID SEVERING STRAND. APPROVAL MUST BE OBTAINED FROM CORESLAB ENGINEER WHEN:
• MORE THAN TWO (2) OPENINGS OCCUR ACROSS SLAB AT ONE LOCATION
• OPENINGS ARE LARGER THAN 5" (127mm)
• WEBS/STRAND MUST BE CUT TO ACCOMMODATE OPENINGS
• OPENINGS AND ADDITIONAL FORCES FROM ABOVE (E.G. MASONRY PARTITION) OCCUR WITHIN THE FIRST 1/5 OF SLAB LENGTH MEASURED FROM BEARING ENDS

- GENERAL NOTES**
1. CONCRETE STRENGTH = 4000 PSI (28 MPa) MIN. @ TRANSFER
 2. CONCRETE STRENGTH = 6000 PSI (41 MPa) MIN. @ 28 DAYS
 3. FIRE RATING = 2 HOUR, (IBC 2012 - SB-2 CLAUSE 2.2.1) (UNO)
 4. WEIGHT = (8" @ 62 PSF) (10" @ 74 PSF) (12" @ 86 PSF) (14" @ 95 PSF)
 5. DO NOT SCALE SHOP DRAWINGS.
 6. CONTRACTOR TO VERIFY ALL DIMENSIONS AND DETAILS.
 7. SUPPLEMENTAL SUPPORT MUST BE PROVIDED (NOT BY CORESLAB) AT LOCATIONS WHERE SLABS MUST BE TRIMMED AROUND COLUMNS, MOMENT CONNECTIONS, BRACING CONNECTIONS AND OTHER SUCH INTERFERENCES THAT COMPROMISE SLAB BEARING (TYPICAL)
 8. GROUTING OF PRECAST SLAB GROUT KEYS ONLY. (U.N.)
 9. POINTING OF EXPOSED SLABS ONLY.
 10. CAULKING OF EXPOSED LONGITUDINAL JOINTS ONLY. (U.N.)
 11. PRECAST BALCONY SLAB JOINTS ARE NOT FEATHERED.
 12. PRECAST BALCONIES WILL RECEIVE STANDARD BROOM FINISH FOR TOP (U.N.)
 13. ALL DRYPACKING AND SOLID TOP COURSES BY OTHERS.
 14. DIMENSION TOLERANCES AS PER CLAUSE 12 OF A23.4
 15. FORMATION OF ICE INSIDE CORES DUE TO WATER INFILTRATION MAY CAUSE DAMAGE TO SLABS. THE GENERAL CONTRACTOR IS RESPONSIBLE FOR KEEPING THE CORES OF SLABS FREE OF WATER & ICE AT ALL TIMES.
 16. MANUFACTURED FINISH: ☐ STANDARD ☒ RAKED ☐ ROOF

SLAB IDENTIFICATION & REINFORCEMENT
THE FIRST NUMERAL OF A SLAB MARK NUMBER REPRESENTS THE QUANTITY OF 1/2"Ø STRAND IN THE BOTTOM OF THE SLAB (E.G. -601 = SIX STRAND & -1003 = TEN STRAND). THE REMAINING DIGITS ARE FOR IDENTIFICATION AND ARE NUMBERED SEQUENTIALLY. WHEN THE FIRST NUMERAL IS PRECEDED WITH AN "H", THAT INDICATES THE SLAB WILL HAVE ONE 1/4"Ø TOP STRAND FOR HANDLING PURPOSES (UNO). WHEN THE FIRST NUMERAL IS PRECEDED WITH A "T" THAT INDICATES THE SLAB WILL HAVE TWO 1/4"Ø TOP STRAND FOR CANTILEVER PURPOSES (UNO).

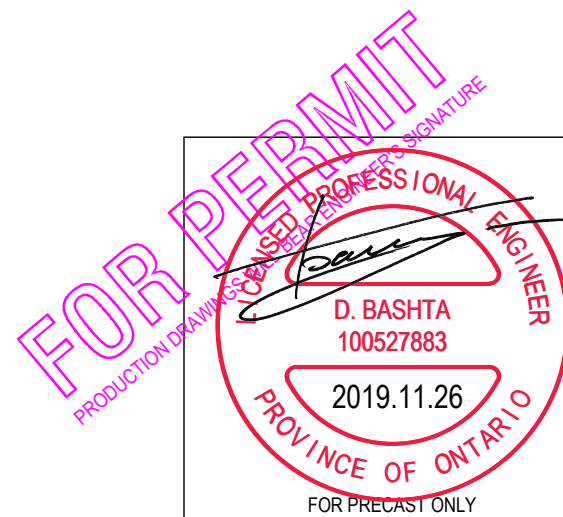
THE USE OF FORKLIFTS ON THE PRECAST DECK(S) DURING CONSTRUCTION IS PROHIBITED BY CORESLAB STRUCTURES

REVIEW FOR FABRICATION
The General Contractor is required to ensure that all information requested on the shop drawings (dimensions, details, openings, etc.) has been verified / provided.

Coreslab will only manufacture precast once all information requested on the drawings has been obtained and the General Contractor has indicated that the shop drawings have been "Reviewed" or "Reviewed as Noted".

Reviewed	Proceed with Fabrication. (Send final production drawings)
Reviewed as Noted	Incorporate Comments and Proceed with Fabrication. (Send final production drawings)
Revise & Resubmit	Incorporate Comments and Resubmit for Review. (DO NOT proceed with fabrication)

Signature: _____ Date: _____



SUPERIMPOSED LOADS		PROJECT: AVIGNON 3	
FLOOR: L.L.: = 50 PSF	D.L.: = 100 PSF	ADDRESS: 18 DENHAM DRIVE, RICHMOND HILL, ON	
CORRIDOR: L.L.: = _____	D.L.: = _____	TITLE: MAIN FLOOR PLAN	
ROOF: L.L.: = _____	D.L.: = _____	CONTRACTOR: GREENPARK GROUP	
L.L.: = _____	D.L.: = _____	DRAWN: GBM	CHECKED: _____
L.L.: = _____	D.L.: = _____	SCALE: NDTs	PROJECT No.: E1.1
PLUS ANY ADDITIONAL LOADS SHOWN ON THIS DRAWING		DATE: OCT. 22, 2019	19-895