

Sales Selection Sheet
Checklist

1 of 12

LOT 7121 Model: 39-3611 D The Beechfield
PURCHASERS: INVENTORY HOME_7121/
VENDOR: Heathwood Homes (Whitby) Limited

ENERGY STAR

- ☐ WOB
- ☒ DECK

UPGRADED / MODIFIED ELEVATION

- ☐ CORNER UPGRADE
- ☐ REAR UPGRADE

CEILING UPGRADE - SMOOTH

- ☒ MAIN FLOOR (STD)
- ☐ SECOND FLOOR WITH RESILIENCE CHANEL
- ☒ LOWER LEVEL

ADDITIONAL ROUGH-INS

- ☒ 200 AMP SERVICE (STD)
- ☒ WET BAR ROUGH-IN
- ☒ HUMIDIFIER (STD)
- ☒ AIR CONDITIONING (STD)

GAS ROUGH-IN

- ☒ STOVE
- ☐ DRYER
- ☒ BBQ
- ☐ ADDITIONAL GAS FIREPLACE

KITCHEN HOODFAN VENTING SIZE

- ☒ 6 IN ROUND DUCT (STD WITH APPLIANCE PACKAGE)
- ☐ 7 IN ROUND DUCT

FULL LOWER LEVEL STAIRS	All Oak
UPPER LOWER LEVEL STAIRS	N/A
LOWER LOWER LEVEL STAIRS	N/A
MAIN STAIRS	All Oak

FEB 10/25

Purchaser:

FEB 10/25

Decor Consultant:

FEB 10/25

Purchaser:

-02- 10 2025

Heathwood Homes (Whitby) Limited

Locked Date:



CONSTRUCTION SUMMARY

Lot: 7121
Model: 39-3611 D The Beechfield
Project/Phase: Country Lane / 7

Offer Worksheet	This is an Energy Star home Note:
--------------------	--------------------------------------

Offer Worksheet	This is Possibly a Deck Grading Condition that includes a deck with steps to grade. (Standard Finished Lower Level Plan) Note:
--------------------	---



CONSTRUCTION SUMMARY

Lot: 7121
Model: 39-3611 D The Beechfield
Project/Phase: Country Lane / 7

CABINETRY

Invoice	Qty.	Description
1814 389,832 02Apr25 **	1.0	- PLUMBING - BAR SINK - COMPLETE BAR SINK FOR SERVERY INCLUDES PLUMBING ROUGH-IN AND MOEN ALIGN BAR PREP FAUCET (MODEL: 5965) AND BOSCO BAR SINK 207029 UNDERMOUNT SINK (INCLUDING GRANITE SINK CUTOUT/POLISH) - CABINETRY-Accommodate Servery Sink; CONCRETE AND DRAIN-Additional Stack; GRANITE-Additional Cu

CONCRETE AND DRAIN

Invoice	Qty.	Description
1814 389,832 02Apr25 **	1.0	- PLUMBING - BAR SINK - COMPLETE BAR SINK FOR SERVERY INCLUDES PLUMBING ROUGH-IN AND MOEN ALIGN BAR PREP FAUCET (MODEL: 5965) AND BOSCO BAR SINK 207029 UNDERMOUNT SINK (INCLUDING GRANITE SINK CUTOUT/POLISH) - CABINETRY-Accommodate Servery Sink; CONCRETE AND DRAIN-Additional Stack; GRANITE-Additional Cu
1814 389,561 02Apr25 **	1.0	FINISHED BASEMENT FAMILY (REC) ROOM - PLUMBING - OPTIONAL EXTRA - ROUGH- IN FOR FUTURE WET BAR - SKETCH # 1 CONCRETE AND DRAIN-Additional Stack

DRYWALL

Invoice	Qty.	Description
1814 711,329 02Apr25	1.0	- DRYWALL - SMOOTH CEILINGS-BASEMENT-UPG PAINTING-Paint smooth ceiling
1814 714,607 02Apr25 **	1.0	- CLASSIC COLLECTION SCHEDULE A - Choice of 20 LED (4000K) pot lights in finished areas (Second Floor Potlight(s) Require Smooth Ceiling) DRYWALL-Drywall Ceiling cutouts for potlights FRAMING-Frame to accommodate potlights 4 X LIVING ROOM ON SEPARATE SWITCH 4 X DINING ROOM ON SEPAEATE SWITCH 6 X MAIN HALL ON EXISTING 3 WAY SWITCH (RELOCATE 2 STANDARD LIGHTS TO KITCHEN ISLAND) 6 X GREAT ROOM ON EXISTING SWITCH FOR PLUG SKETCH # 2
1814 714,613 02Apr25 **	2.0	- ELECTRICAL-POTLIGHT (4000K) BUNDLE-8 X 4 INCH SLIM RECESSED LED DOWNLIGHT WHITE TRIM INCLUDES 2 SWITCHES NOTE: LOCATION MAY VARY FROM REQUEST DEPENDS ON JOIST PLACEMENT DRYWALL-Drywall/Ceiling cutouts for potlights; FRAMING-Frame to accommodate potlights 8 X KITCHEN ON SEPARATE SWITCH (RELOCATE STD LIGHT TO BE CAPPED ABOVE ISLAND) 4 X STUDY ON SEPARATE SWITCH 4 X REC ROOM ON SEPARATE SWITCH SKETCH # 1 AND 2



CONSTRUCTION SUMMARY

Lot: 7121
Model: 39-3611 D The Beechfield
Project/Phase: Country Lane / 7

ELECTRICAL

Invoice	Qty.	Description
1814 714,607 02Apr25	1.0	- CLASSIC COLLECTION SCHEDULE A - Choice of 20 LED (4000K) pot lights in finished areas (Second Floor Potlight(s) Require Smooth Ceiling) DRYWALL-Drywall Ceiling cutouts for potlights FRAMING-Frame to accommodate potlights 4 X LIVING ROOM ON SEPARATE SWITCH 4 X DINING ROOM ON SEPAEATE SWITCH 6 X MAIN HALL ON EXISTING 3 WAY SWITCH (RELOCATE 2 STANDARD LIGHTS TO KITCHEN ISLAND) 6 X GREAT ROOM ON EXISTING SWITCH FOR PLUG SKETCH # 2
1814 390,494 02Apr25	1.0	- ELECTRICAL-CAR CHARGER-2 INCH CONDUIT WITH 8X8 BOX FOR FUTURE CAR CHARGER SKETCH # 2
1814 714,613 02Apr25	2.0	- ELECTRICAL-POTLIGHT (4000K) BUNDLE-8 X 4 INCH SLIM RECESSED LED DOWNLIGHT WHITE TRIM INCLUDES 2 SWITCHES NOTE: LOCATION MAY VARY FROM REQUEST DEPENDS ON JOIST PLACEMENT DRYWALL-Drywall/Ceiling cutouts for potlights; FRAMING-Frame to accommodate potlights 8 X KITCHEN ON SEPARATE SWITCH (RELOCATE STD LIGHT TO BE CAPPED ABOVE ISLAND) 4 X STUDY ON SEPARATE SWITCH 4 X REC ROOM ON SEPARATE SWITCH SKETCH # 1 AND 2
1814 390,527 02Apr25	1.0	- ELECTRICAL-REINFORCE CELING BOX TO HOLD A LIGHT FIXTURE UP TO 75LBS FOR (CAPPED) CEILING IN OPEN TO BELOW AREA ON SECOND FLOOR SKETCH # 3
1814 389,800 02Apr25 **	1.0	KITCHEN - HEATING/AIR - ROUGH-IN GAS LINE FOR GAS STOVE AT MAIN FLOOR (SEE SPECS) (HOOK-UP NOT INCLUDED) LEAVE STANDARD 120 VOLT ELECTRICAL OUTLET ON A SEPARATE CIRCUIT. * SPECIFY IF STANDARD 220V WILL STAY OR BE RELOCATED STANDARD 240 TO REMAIN SKETCH # 2 ELECTRICAL-Notify
1814 390,496 02Apr25	1.0	- ELECTRICAL-CEILING ROUGH-IN (CAPPED) INSTALL IN SECOND FLOOR OPEN TO BELOW AREA SKETCH # 3
1814 390,528 02Apr25	3.0	- ELECTRICAL-RELOCATION OF SWITCHES/LIGHTS (MUST SPECIFY LOCATION)-NOTE: PLUGS CANNOT BE RELOCATED- MUST PURCHASE ADDITIONAL OUTLET. RELOCATE 1 X KITCHEN LIGHTS AND 2 X MAIN HALL LIGHTS TO BE CAPPED ABOVE KITCHEN ISLAND SKETCH # 2
1814 390,529 02Apr25	1.0	- ELECTRICAL-SUPPLY AND INSTALL RECESSED PLUG ON EXISTING CIRCUIT 1 X GREAT AND 1 X REC ROOM INSTALL AT 70" +/- FROM FLOOR ABOVE FIREPLACE



CONSTRUCTION SUMMARY

Lot: 7121
Model: 39-3611 D The Beechfield
Project/Phase: Country Lane / 7

FRAMING

Invoice	Qty.	Description
1814 714,607 02Apr25 **	1.0	- CLASSIC COLLECTION SCHEDULE A - Choice of 20 LED (4000K) pot lights in finished areas (Second Floor Potlight(s) Require Smooth Ceiling) DRYWALL-Drywall Ceiling cutouts for potlights FRAMING-Frame to accommodate potlights 4 X LIVING ROOM ON SEPARATE SWITCH 4 X DINING ROOM ON SEPAAEATE SWITCH 6 X MAIN HALL ON EXISTING 3 WAY SWITCH (RELOCATE 2 STANDARD LIGHTS TO KITCHEN ISLAND) 6 X GREAT ROOM ON EXISTING SWITCH FOR PLUG SKETCH # 2
1814 714,613 02Apr25 **	2.0	- ELECTRICAL-POTLIGHT (4000K) BUNDLE-8 X 4 INCH SLIM RECESSED LED DOWNLIGHT WHITE TRIM INCLUDES 2 SWITCHES NOTE: LOCATION MAY VARY FROM REQUEST DEPENDS ON JOIST PLACEMENT DRYWALL-Drywall/Ceiling cutouts for potlights; FRAMING-Frame to accommodate potlights 8 X KITCHEN ON SEPARATE SWITCH (RELOCATE STD LIGHT TO BE CAPPED ABOVE ISLAND) 4 X STUDY ON SEPARATE SWITCH 4 X REC ROOM ON SEPARATE SWITCH SKETCH # 1 AND 2

GRANITE

Invoice	Qty.	Description
1814 389,832 02Apr25 **	1.0	- PLUMBING - BAR SINK - COMPLETE BAR SINK FOR SERVERY INCLUDES PLUMBING ROUGH-IN AND MOEN ALIGN BAR PREP FAUCET (MODEL: 5965) AND BOSCO BAR SINK 207029 UNDERMOUNT SINK (INCLUDING GRANITE SINK CUTOUT/POLISH) - CABINETRY-Accommodate Servery Sink; CONCRETE AND DRAIN-Additional Stack; GRANITE-Additional Cu

HEATING / AIR CONDITIONING

Invoice	Qty.	Description
1814 389,796 02Apr25	1.0	- HEATING/AIR - ROUGH-IN GAS LINE FOR BBQ AT MAIN FLOOR UP TO 40 FT (QUICK CONNECT NOT INCLUDED); ELECTR ICAL OUTLET PRICED SEPARATELY IF REQUIRED SKETCH # 2
1814 389,800 02Apr25	1.0	KITCHEN - HEATING/AIR - ROUGH-IN GAS LINE FOR GAS STOVE AT MAIN FLOOR (SEE SPECS) (HOOK-UP NOT INCLUDED) LEAVE STANDARD 120 VOLT ELECTRICAL OUTLET ON A SEPARATE CIRCUIT. * SPECIFY IF STANDARD 220V WILL STAY OR BE RELOCATED STANDARD 240 TO REMAIN SKETCH # 2 ELECTRICAL-Notify

PAINTING

Invoice	Qty.	Description
1814 711,329 02Apr25 **	1.0	- DRYWALL - SMOOTH CEILINGS-BASEMENT-UPG PAINTING-Paint smooth ceiling



CONSTRUCTION SUMMARY

Lot: 7121
Model: 39-3611 D The Beechfield
Project/Phase: Country Lane / 7

PLUMBING

Invoice	Qty.	Description
1814 389,832 02Apr25	1.0	- PLUMBING - BAR SINK - COMPLETE BAR SINK FOR SERVERY INCLUDES PLUMBING ROUGH-IN AND MOEN ALIGN BAR PREP FAUCET (MODEL: 5965) AND BOSCO BAR SINK 207029 UNDERMOUNT SINK (INCLUDING GRANITE SINK CUTOUT/POLISH) - CABINETRY-Accommodate Servery Sink; CONCRETE AND DRAIN-Additional Stack; GRANITE-Additional Cu
1814 390,178 02Apr25	1.0	MASTER ENSUITE - PLUMBING - MOEN -CHATEAU - POSI-TEMP TUB/SHOWER WITH 3 FUNCTION DIVERTER VALVE, SLIDE BAR WITH HANDH ELD AND SHOWERHEAD CHROME (MODEL: 62320/U361CI/UT2721/TL183EP/3669EP/A725) FOR PRINCIPAL ENSUITE SHOWER SKETCH # 3 SEE SPEC
1814 389,561 02Apr25	1.0	FINISHED BASEMENT FAMILY (REC) ROOM - PLUMBING - OPTIONAL EXTRA - ROUGH- IN FOR FUTURE WET BAR - SKETCH # 1 CONCRETE AND DRAIN-Additional Stack

SECURITY

Invoice	Qty.	Description
1814 389,567 02Apr25	1.0	- SECURITY - SECURITY CAMERA ROUGH-IN SKETCH # 2

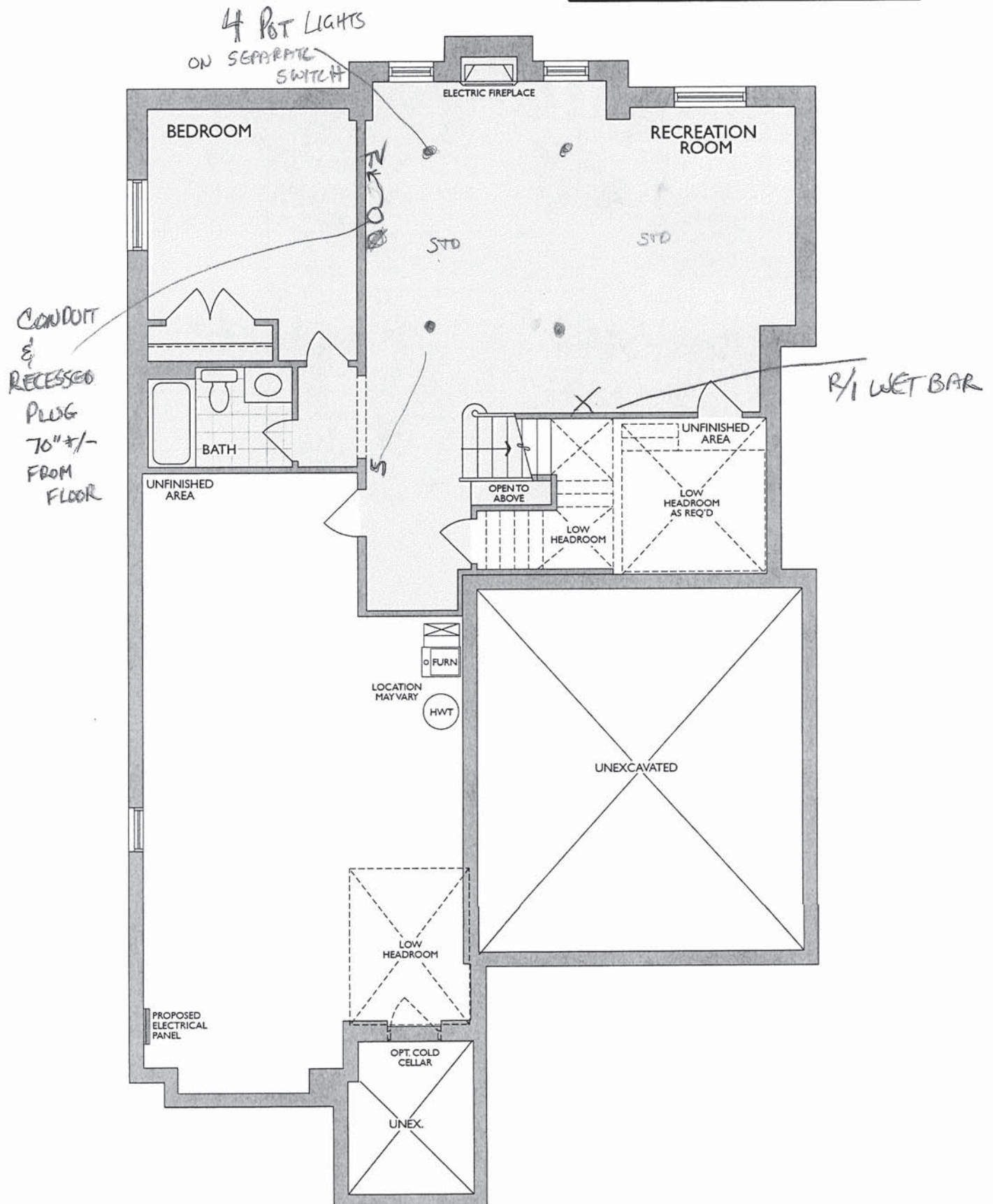
STRUCTURED WIRING

Invoice	Qty.	Description
1814 389,571 02Apr25	2.0	- STRUCTURED WIRING - CONDUIT PIPE TO ABOVE FIREPLACE ROUGH-IN 1 X REC ROOM BESIDE RECESSED PLUG 70" +/- FROM FLOOR 1 X GREAT ROOM ABOVE FIREPLACE 70" +/- FROM FLOOR SKETCH # 1 AND 2
1814 389,577 02Apr25	1.0	GREAT ROOM - STRUCTURED WIRING - RELOCATION OF TV/PHONE SKETCH # 2

39-3611 ELEV. D

The Beechfield

SKETCH #1

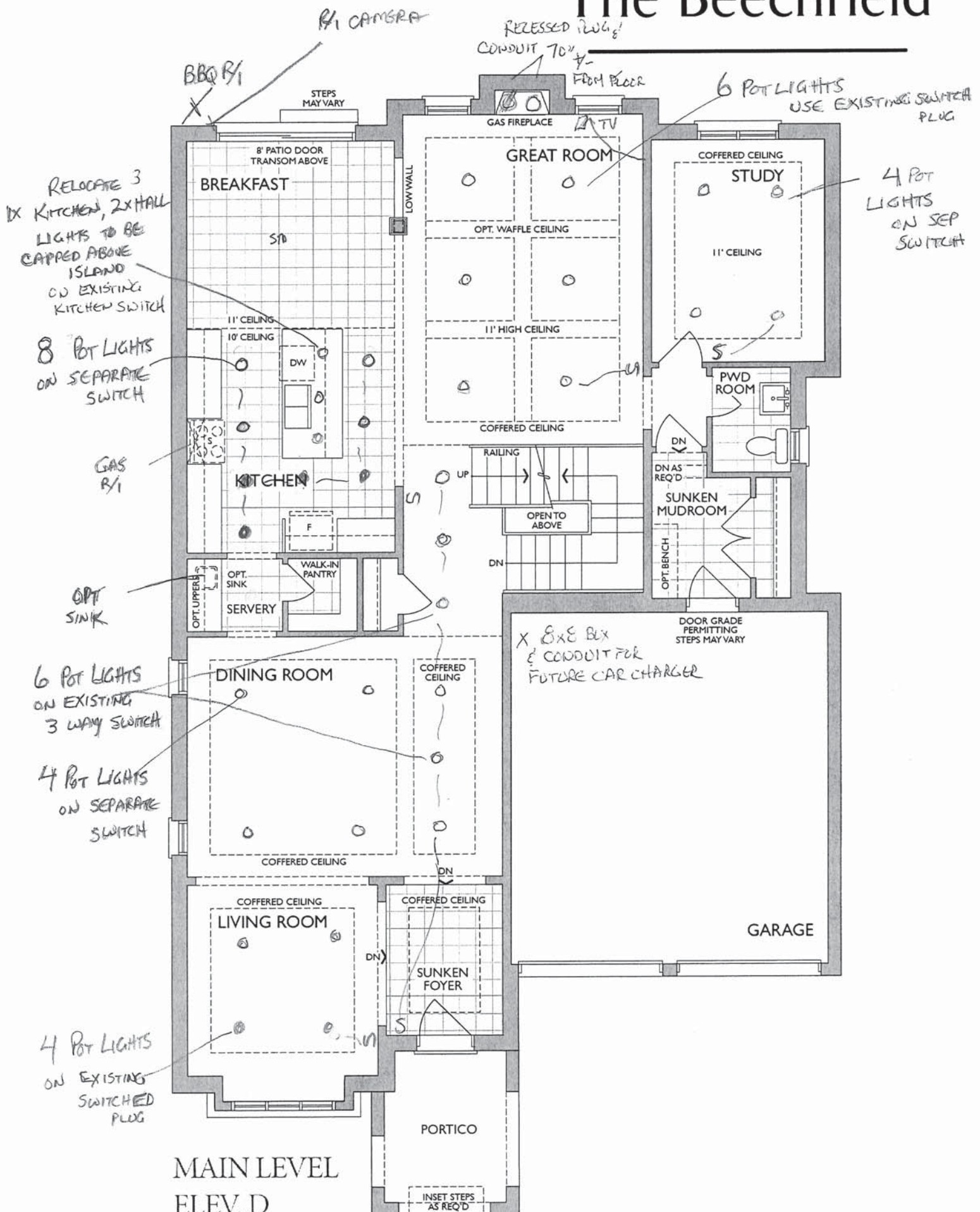


FINISHED LOWER LEVEL
ELEV. D

39-3611 ELEV. D

TRADITIONS
OF COUNTRY LANE

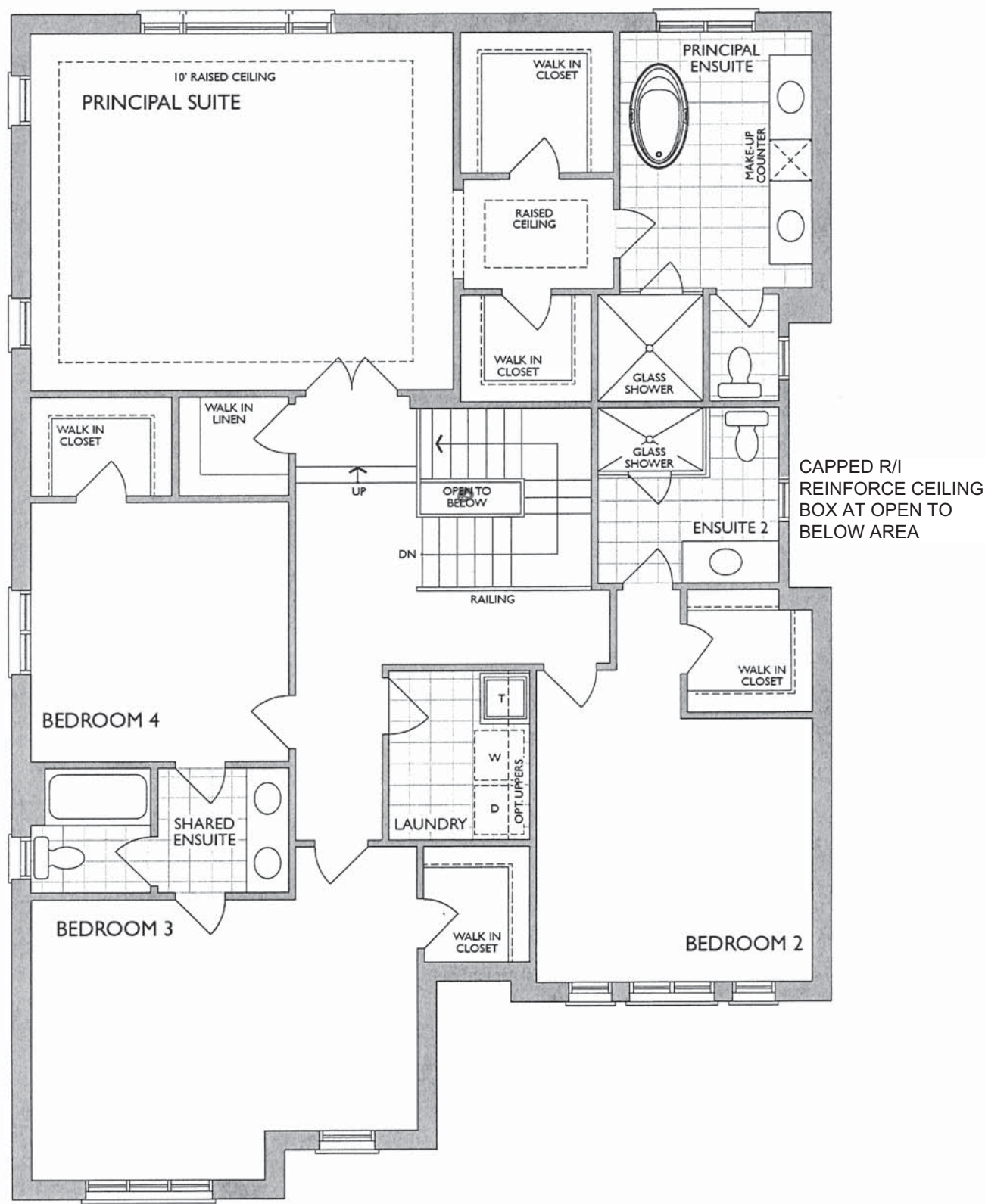
The Beechfield



39-3611 ELEV. D



The Beechfield



SECOND LEVEL
ELEV. D

* Floor plan may vary due to grading conditions.



SERVERY SINK

Phone: 416-742-1888 | Fax: 416-742-6888
www.boscocanada.com | info@boscocanada.com
5171 Steeles Avenue West | Toronto, Ontario M9L 1R5

Builder Series - Model:207029
Undermount

Rear positioned drain holes to maximize usable bowl and cabinet storage space below

Specifications:

- 304 Stainless Steel
- 18 Gauge
- Strainer
- Undermount Clips
- 7" Deep

Outside:
12 5/8" x 18" x 7"
Inside:
10 5/8" x 16" x 7"

Minimum cabinet size 15"

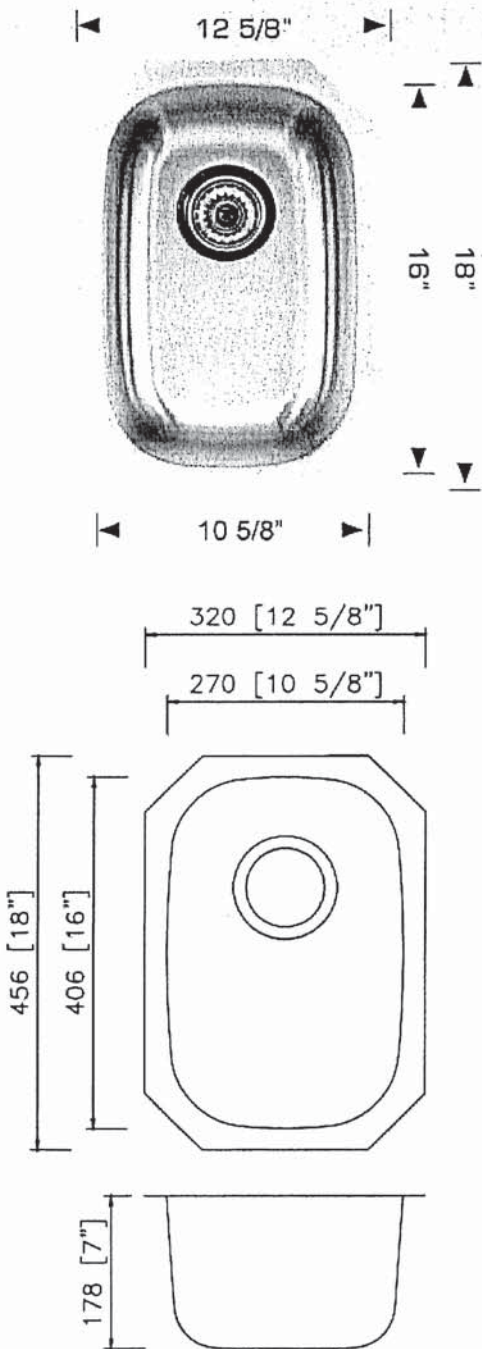
Certification/Warranty

- ASME A 112.19.3
- CSA B45.4
- Limited Lifetime Warranty

Optional Accessories



Model: G207029
Grid



Bosco Canada Inc. is known around the world for producing high quality kitchen sinks that incorporate modern design and functional superiority in every piece they manufacture.

MOEN®

SERUERY FAUCET

Specifications

FAUCET DESCRIPTION

- Reflex™ pulldown system offers smooth operation, easy movement and secure docking
- Power Clean™ spray technology
- Metal construction with various finishes identified by suffix
- Quick connect installation
- Pulldown spray with 68" braided hose
- Flexible supply lines with 3/8" compression fittings
- High arc spout provides the perfect height and reach for prep sinks while the pulldown feature provides maneuverability for food preparation tasks
- 360° rotating spout provides ability to install handle on either side
- Faucet designed for handle to be mounted on right side

OPERATION

- Lever style handle
- Temperature controlled by 100° arc of handle travel
- Operates with less than 5 lbs. of force
- Operates in stream or spray mode in the pullout or retracted position

FLOW

- Flow is limited to 1.5 gpm (5.7 L/min) max at 60 psi

CARTRIDGE

- 1255™ Duralast™ cartridge for Single-Handle Faucets

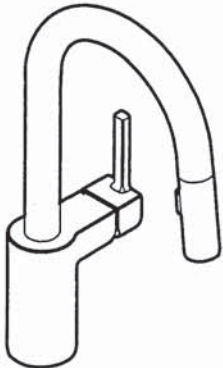
STANDARDS

- Third party certified to IAPMO Green, ASME A112.18.1/CSA B125.1 and all applicable requirements referenced therein including NSF 61/9G & 372
- Meets CalGreen and Georgia SB370 requirements
- Complies with California Proposition 65 and with the Federal Safe Drinking Water Act
- The backflow protection system in the device consists of two independently operating check valves, a primary and a secondary which prevent backflow

- ADA  for lever handle

WARRANTY

- Lifetime limited warranty against leaks, drips and finish defects to the original homeowner
 - 10 year limited warranty when used in a multifamily installation
 - 5 year limited warranty when used in a commercial installation
- Visit www.moen.com/support for complete details and limitations

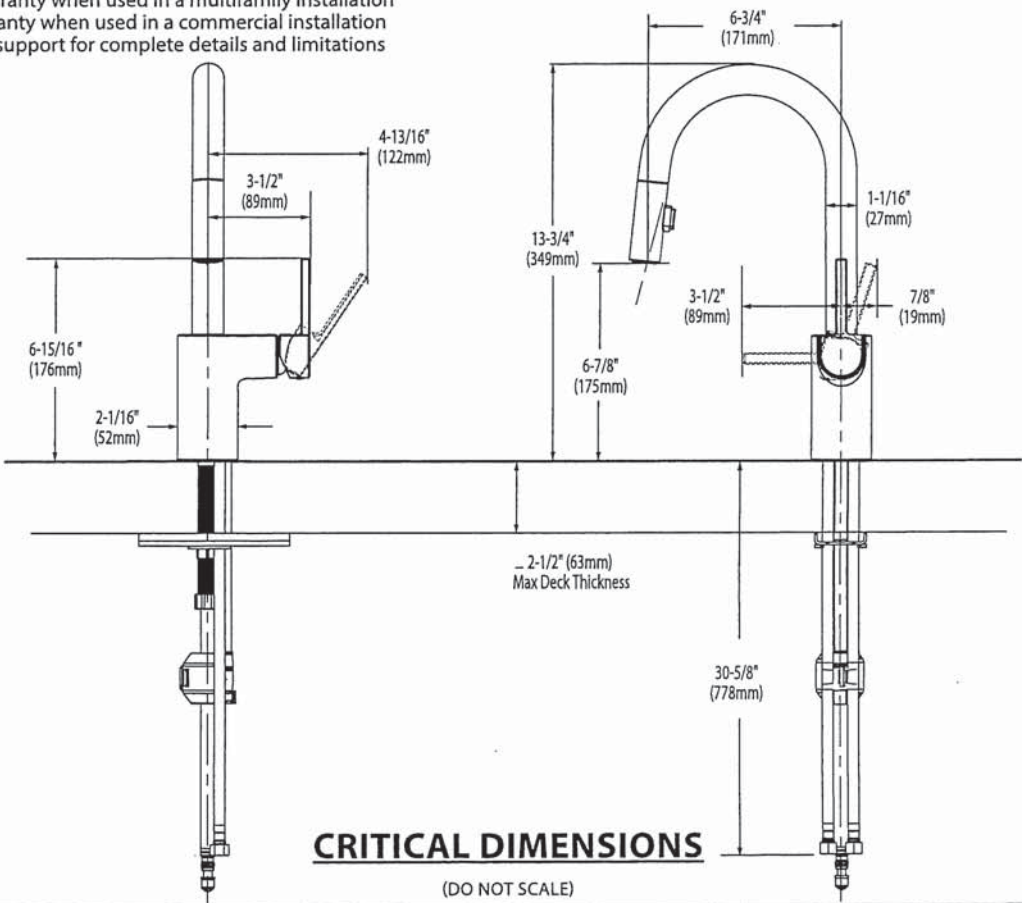


ALIGN™

Single Handle High Arc
Pulldown Prep/Bar Faucet

Models: 5965 series

NOTE: THIS FAUCET IS DESIGNED TO BE INSTALLED
THROUGH 1 HOLE, 1-1/2" (38mm) MIN. DIA.
(OPTIONAL 3-HOLE ESCUTCHEON 141002 AVAILABLE)



PRINCIPAL ENSUITE SHOWER

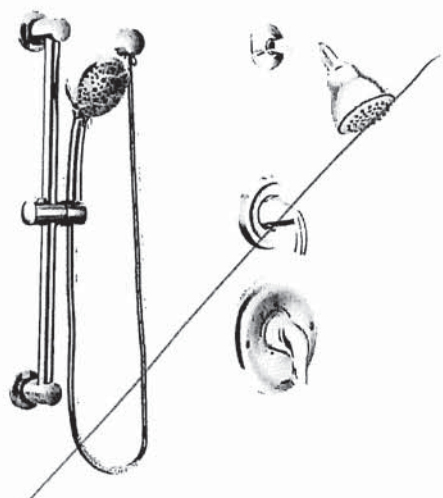
Chateau®

POSI-TEMP®



Posi-Temp® Tub/Shower Faucet with 3 Function Transfer Valve/Trim and Slide Bar with Hand Shower*

TL183EP / U361CI / UT2721 / 3669EP / A725 / 62320



Posi-Temp® Shower Only with 3 Function Transfer Valve/Trim and Slide Bar with Hand Shower*

TL182EP / U361CI / UT2721 / 3669EP / A725 / 62320



Posi-Temp® Tub/Shower Faucet with 4 Function Hand Shower*

TL2359EP / 62320



Eco-Performance Posi-Temp® Tub/Shower Faucet*

TL183EP / 62320



Eco-Performance Posi-Temp® Shower Only*

TL182EP / 62320

CHATEAU
FINISH OPTION



Chrome

To order Chrome (C) model, use model number only.
* Refer to the Shower Design Guide for Installation Instructions