

Sales Selection Sheet  
Checklist

1 of 12

LOT 7101    Model: 30-2794 B The Willowglen  
PURCHASERS: INVENTORY HOME\_7101/  
VENDOR:        Heathwood Homes (Whitby) Limited

- ☐ WOB
- ☐ DECK

UPGRADED / MODIFIED ELEVATION

- ☐ CORNER UPGRADE
- ☐ REAR UPGRADE

CEILING UPGRADE - SMOOTH

- ☒ MAIN FLOOR (STD)
- ☐ SECOND FLOOR WITH RESILIENCE CHANEL
- ☒ LOWER LEVEL

ADDITIONAL ROUGH-INS

- ☒ 200 AMP SERVICE (STD)
- ☒ WET BAR ROUGH-IN
- ☒ HUMIDIFIER (STD)
- ☒ AIR CONDITIONING (STD)

GAS ROUGH-IN

- ☒ STOVE
- ☐ DRYER
- ☒ BBQ
- ☐ ADDITIONAL GAS FIREPLACE

KITCHEN HOODFAN VENTING SIZE

- ☒ 6 IN ROUND DUCT (STD WITH APPLIANCE PACKAGE)
- ☐ 7 IN ROUND DUCT

FULL LOWER LEVEL STAIRS	All Oak
UPPER LOWER LEVEL STAIRS	N/A
LOWER LOWER LEVEL STAIRS	N/A
MAIN STAIRS	All Oak

FEB 10/25    *mRosen*  
Date    Purchaser:

FEB 10/25    MARILYN ROSEN  
Date    Decor Consultant:

FEB 10/25    *mRosen*  
Date    Purchaser:

*mRosen*  
-02- 10 2025  
Date    Heathwood Homes (Whitby) Limited  
Approved

Locked Date:



CONSTRUCTION SUMMARY

Lot: 7101  
Model: 30-2794 B The Willowglen  
Project/Phase: Country Lane / 7

Offer	This is an energy star home
Worksheet	Note:



CONSTRUCTION SUMMARY

Lot: 7101  
Model: 30-2794 B The Willowglen  
Project/Phase: Country Lane / 7

CABINETRY

Invoice	Qty.	Description
1813 389,832 29May25 **	1.0	- PLUMBING - BAR SINK - COMPLETE BAR SINK FOR SERVERY INCLUDES PLUMBING ROUGH-IN AND MOEN ALIGN BAR PREP FAUCET (MODEL: 5965) AND BOSCO BAR SINK 207029 UNDERMOUNT SINK (INCLUDING GRANITE SINK CUTOUT/POLISH) - SKETCH # 2 SEE SPECS <b>CABINETRY-Accommodate Servery Sink; CONCRETE AND DRAIN-Additional Stack where needed; GRANITE-Additional Cutout</b>

CONCRETE AND DRAIN

Invoice	Qty.	Description
1813 389,561 29May25 **	1.0	FINISHED BASEMENT FAMILY (REC) ROOM - PLUMBING - OPTIONAL EXTRA - ROUGH- IN FOR FUTURE WET BAR -  SKETCH # 1 <b>CONCRETE AND DRAIN-Additional Stack where needed</b>
1813 389,832 29May25 **	1.0	- PLUMBING - BAR SINK - COMPLETE BAR SINK FOR SERVERY INCLUDES PLUMBING ROUGH-IN AND MOEN ALIGN BAR PREP FAUCET (MODEL: 5965) AND BOSCO BAR SINK 207029 UNDERMOUNT SINK (INCLUDING GRANITE SINK CUTOUT/POLISH) - SKETCH # 2 SEE SPECS <b>CABINETRY-Accommodate Servery Sink; CONCRETE AND DRAIN-Additional Stack where needed; GRANITE-Additional Cutout</b>

DRYWALL

Invoice	Qty.	Description
1813 711,310 29May25	1.0	- DRYWALL - SMOOTH CEILINGS-BASEMENT-UPG  <b>PAINTING-Paint smooth ceiling</b>
1813 714,607 29May25 **	1.0	- CLASSIC COLLECTION SCHEDULE A - Choice of 20 LED (4000K) pot lights in finished areas (Second Floor Potlight(s) Require Smooth Ceiling) DRYWALL-Drywall Ceiling cutouts for potlights FRAMING-Frame to accommodate potlights  5 X POT LIGHTS IN MAIN HALL ON EXISTING 3 WAY SWITCH ( RELOCATE STANDARD LIGHTS)** SEE ADDITONAL POT LIGHT UPGRADE 4 X POT LIGHT IN DINING ROOM ON SEPARATE SWITCH 4 X POT LIGHTS IN GREAT ROOM ON SEPARATE SWITCH 4 X POT LIGHTS IN KITCHEN ON SEPARATE SWITCH (RELOCATE STANDARD ABOVE ISLAND) 4 X POT LIGHTS IN BREAKFAST ON SEPARATE SWITCH (RELOCATE STANDARD ABOVE ISLAND) SKETCH # 2



CONSTRUCTION SUMMARY

4 of 12

Lot: 7101  
Model: 30-2794 B The Willowglen  
Project/Phase: Country Lane / 7

ELECTRICAL

Invoice	Qty.	Description
1813 714,607 29May25	1.0	- CLASSIC COLLECTION SCHEDULE A - Choice of 20 LED (4000K) pot lights in finished areas (Second Floor Potlight(s) Require Smooth Ceiling) DRYWALL-Drywall Ceiling cutouts for potlights FRAMING-Frame to accommodate potlights  5 X POT LIGHTS IN MAIN HALL ON EXISTING 3 WAY SWITCH ( RELOCATE STANDARD LIGHTS)** SEE ADDITONAL POT LIGHT UPGRADE 4 X POT LIGHT IN DINING ROOM ON SEPARATE SWITCH 4 X POT LIGHTS IN GREAT ROOM ON SEPARATE SWITCH 4 X POT LIGHTS IN KITCHEN ON SEPARATE SWITCH (RELOCATE STANDARD ABOVE ISLAND) 4 X POT LIGHTS IN BREAKFAST ON SEPARATE SWITCH (RELOCATE STANDARD ABOVE ISLAND) SKETCH # 2
1813 390,528 29May25	4.0	- ELECTRICAL-RELOCATION OF SWITCHES/LIGHTS (MUST SPECIFY LOCATION)-NOTE: PLUGS CANNOT BE RELOCATED- MUST PURCHASE ADDITIONAL OUTLET.  RELOCATE KITCHEN, BREAKFAST ROOM AND 1 X MAIN HALL LIGHTS TO ABOVE KITCHEN ISLAND RELOCATE 1 X MAIN HALL LIGHT TO OPEN TO BELOW AREA ON SECOND FLOOR -USE STANDARD 4 WAY SWITCH FOR SECOND FLOOR HALL LIGHTS SKETCH # 2 AND 3
1813 389,800 29May25 **	1.0	- HEATING/AIR - ROUGH-IN GAS LINE FOR GAS STOVE AT MAIN FLOOR (SEE SPECS) (HOOK-UP NOT INCLUDED) LEAVE STANDARD 120 VOLT ELECTRICAL OUTLET ON A SEPARATE CIRCUIT. * SPECIFY IF STANDARD 220V WILL STAY OR BE RELOCATED STANDARD 240 V TO REMAIN SKETCH # 2 <b>ELECTRICAL-Notify</b>
1813 714,613 29May25	1.0	- ELECTRICAL-POTLIGHT (4000K) BUNDLE-8 X 4 INCH SLIM RECESSED LED DOWNLIGHT WHITE TRIM INCLUDES 2 SWITCHES NOTE: LOCATION MAY VARY FROM REQUEST DEPENDS ON JOIST PLACEMENT DRYWALL-Drywall Ceiling cutouts for potlights FRAMING-Frame to accommodate potlights 1 x POT LIIGHT IN MAIN HALL ( INCLUDED IN 20 POT LIGHT PACKAGE DESCRIPTION) 1 X POT LIGHT IN POWDER ROOM -USE EXISTING SWITCH FOR VANITY LIGHT 2 X POT LIGHTS IN SERVERY ON SEPARATE SWITCH - DELETE STD LIGHT) 4 X POT LIGHTS IN GREAT ROOM ON SEPARATE SWITCH KEEP STANDARD LIGHTS SKETCH # 1 AND 2
1813 390,494 29May25	1.0	- ELECTRICAL-CAR CHARGER-2 INCH CONDUIT WITH 8X8 BOX FOR FUTURE CAR CHARGER  SKETCH # 2
1813 390,529 29May25	2.0	- ELECTRICAL-SUPPLY AND INSTALL RECESSED PLUG ON EXISTING CIRCUIT  1 X ABOVE REC ROOM FIREPLACE AND 1 X ABOVE GREAT ROOM FIREPLACE BESIDE CONDUITS 70"+/- FROM FLOOR SKETCH # 1 AND 2
1813 390,527 29May25	1.0	- ELECTRICAL-REINFORCE CELING BOX TO HOLD A LIGHT FIXTURE UP TO 75LBS  FOR RELOCATED HALL LIGHT LOCATED ON SECOND FLOOR OPEN TO BELOW AREA OF STAIRCASE. SKETCH # 3

FRAMING

Invoice	Qty.	Description
1813 714,607 29May25 **	1.0	- CLASSIC COLLECTION SCHEDULE A - Choice of 20 LED (4000K) pot lights in finished areas (Second Floor Potlight(s) Require Smooth Ceiling) DRYWALL-Drywall Ceiling cutouts for potlights FRAMING-Frame to accommodate potlights  5 X POT LIGHTS IN MAIN HALL ON EXISTING 3 WAY SWITCH ( RELOCATE STANDARD LIGHTS)** SEE ADDITONAL POT LIGHT UPGRADE 4 X POT LIGHT IN DINING ROOM ON SEPARATE SWITCH 4 X POT LIGHTS IN GREAT ROOM ON SEPARATE SWITCH 4 X POT LIGHTS IN KITCHEN ON SEPARATE SWITCH (RELOCATE STANDARD ABOVE ISLAND) 4 X POT LIGHTS IN BREAKFAST ON SEPARATE SWITCH (RELOCATE STANDARD ABOVE ISLAND) SKETCH # 2



CONSTRUCTION SUMMARY

Lot: 7101  
Model: 30-2794 B The Willowglen  
Project/Phase: Country Lane / 7

GRANITE

Invoice	Qty.	Description
1813 389,832 29May25 **	1.0	- PLUMBING - BAR SINK - COMPLETE BAR SINK FOR SERVERY INCLUDES PLUMBING ROUGH-IN AND MOEN ALIGN BAR PREP FAUCET (MODEL: 5965) AND BOSCO BAR SINK 207029 UNDERMOUNT SINK (INCLUDING GRANITE SINK CUTOUT/POLISH) - SKETCH # 2 SEE SPECS <b>CABINETRY-Accommodate Servery Sink; CONCRETE AND DRAIN-Additional Stack where needed; GRANITE-Additional Cutout</b>

HEATING / AIR CONDITIONING

Invoice	Qty.	Description
1813 389,800 29May25	1.0	- HEATING/AIR - ROUGH-IN GAS LINE FOR GAS STOVE AT MAIN FLOOR (SEE SPECS) (HOOK-UP NOT INCLUDED) LEAVE STANDARD 120 VOLT ELECTRICAL OUTLET ON A SEPARATE CIRCUIT. * SPECIFY IF STANDARD 220V WILL STAY OR BE RELOCATED STANDARD 240 V TO REMAIN SKETCH # 2 <b>ELECTRICAL-Notify</b>
1813 389,796 29May25	1.0	- HEATING/AIR - ROUGH-IN GAS LINE FOR BBQ AT MAIN FLOOR UP TO 40 FT (QUICK CONNECT NOT INCLUDED); ELECTR ICAL OUTLET PRICED SEPARATELY IF REQUIRED SKETCH # 2

PAINTING

Invoice	Qty.	Description
1813 711,310 29May25 **	1.0	- DRYWALL - SMOOTH CEILINGS-BASEMENT-UPG  <b>PAINTING-Paint smooth ceiling</b>

PLUMBING

Invoice	Qty.	Description
1813 390,178 29May25	1.0	- PLUMBING - MOEN -CHATEAU - POSI-TEMP TUB/SHOWER WITH 3 FUNCTION DIVERTER VALVE, SLIDE BAR WITH HANDH ELD AND SHOWERHEAD CHROME (MODEL: 62320/U361CI/UT2721/TL183EP/3669EP/A725)  SEE SPEC
1813 389,561 29May25	1.0	FINISHED BASEMENT FAMILY (REC) ROOM - PLUMBING - OPTIONAL EXTRA - ROUGH- IN FOR FUTURE WET BAR -  SKETCH # 1 <b>CONCRETE AND DRAIN-Additional Stack where needed</b>
1813 389,832 29May25	1.0	- PLUMBING - BAR SINK - COMPLETE BAR SINK FOR SERVERY INCLUDES PLUMBING ROUGH-IN AND MOEN ALIGN BAR PREP FAUCET (MODEL: 5965) AND BOSCO BAR SINK 207029 UNDERMOUNT SINK (INCLUDING GRANITE SINK CUTOUT/POLISH) - SKETCH # 2 SEE SPECS <b>CABINETRY-Accommodate Servery Sink; CONCRETE AND DRAIN-Additional Stack where needed; GRANITE-Additional Cutout</b>

SECURITY

Invoice	Qty.	Description
1813 389,567 29May25	1.0	- SECURITY - SECURITY CAMERA ROUGH-IN  AT REAR OF HOUSE SKETCH # 2



CONSTRUCTION SUMMARY

Lot: 7101  
Model: 30-2794 B The Willowglen  
Project/Phase: Country Lane / 7

STRUCTURED WIRING

Invoice	Qty.	Description
1813 389,571 29May25	2.0	- STRUCTURED WIRING - CONDUIT PIPE TO ABOVE FIREPLACE ROUGH-IN  1 X REC ROOM ABOVE FIREPLACE TO RELOCATED TV R/I BESIDE RECESSED PLUG 70" +/- FROM FLOOR 1 X GREAT ROOM ABOVE FIREPLACE TO TV R/I BESIDE RECESSED PLUG 70"+/- FROM FLOOR SKETCH # 1 AND 2
1813 389,577 29May25	1.0	FINISHED BASEMENT FAMILY (REC) ROOM - STRUCTURED WIRING - RELOCATION OF TV/PHONE  RELOCATE TV R/I TO BESIDE ELECTRIC FIREPLACE SKETCH # 1

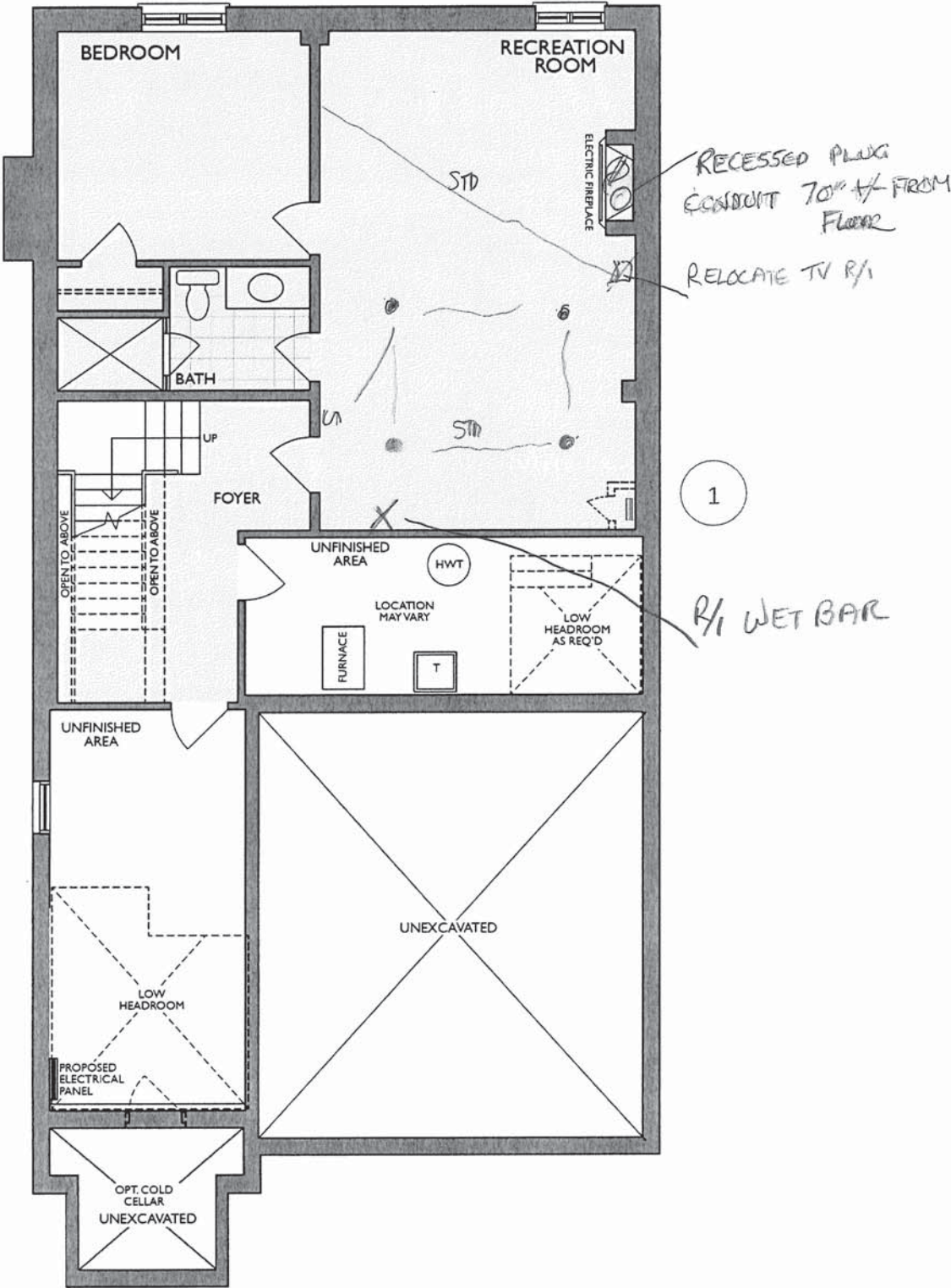


SKETCH # 1



30-2794 ELEV. B

The Willowglen



FINISHED LOWER LEVEL  
ELEV. A & B

- Changes made to match the Architectural plan:**
- 1. Hydro closet when required

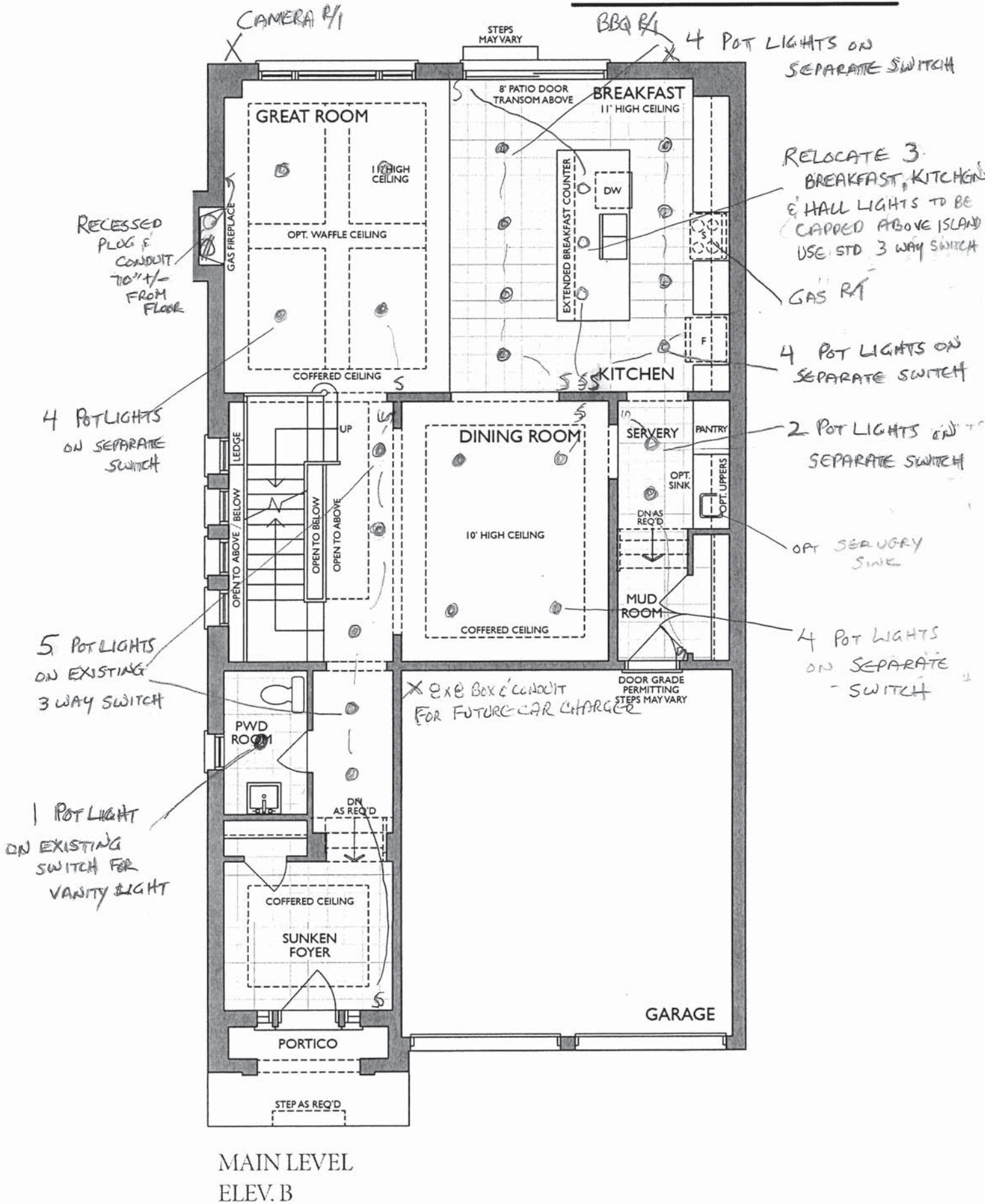
\* Floor plan may vary due to grading conditions.

SKETCH #2



30-2794 ELEV. B

The Willowglen



\* Floor plan may vary due to grading conditions.

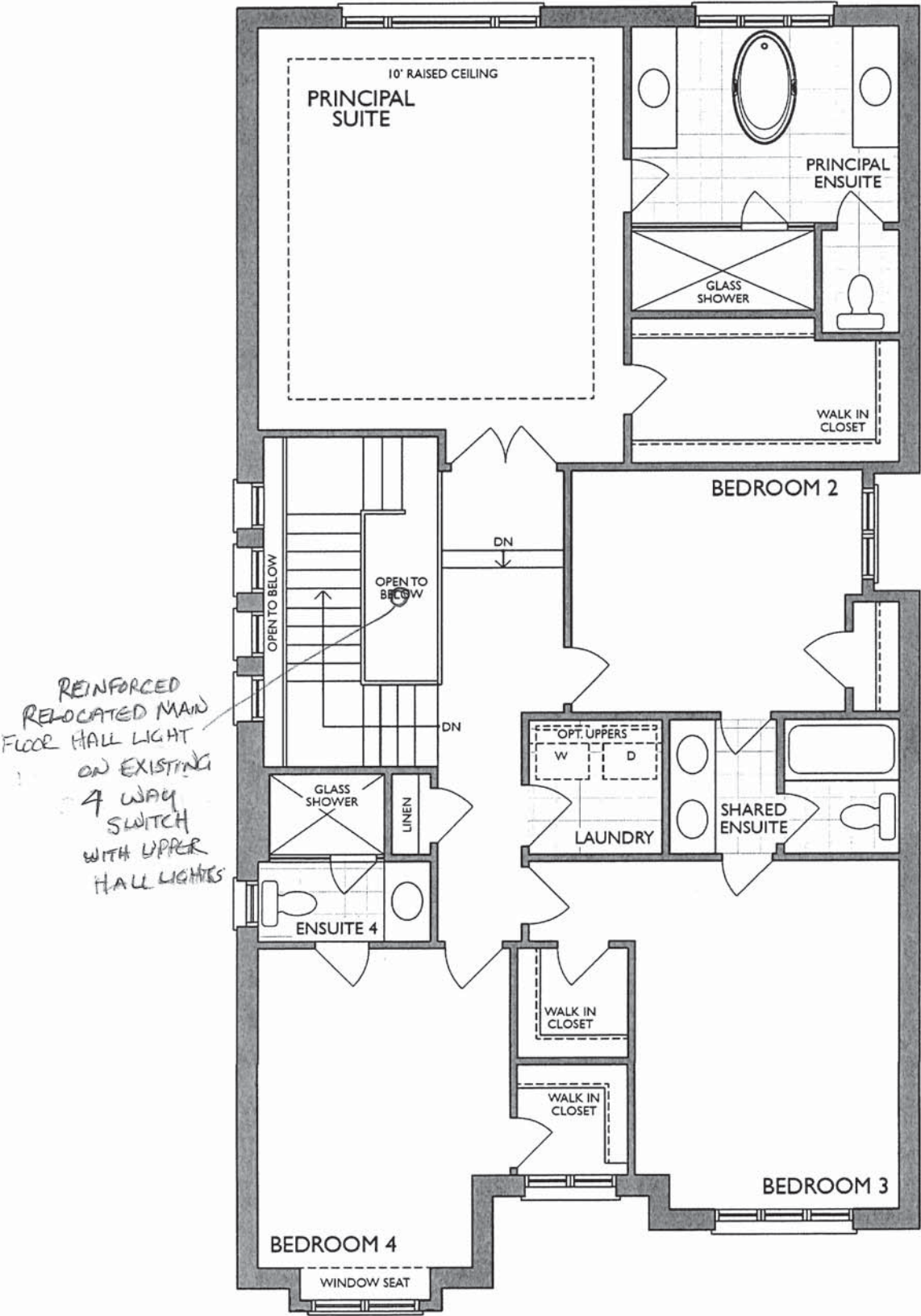


SKETCH # 3



30-2794 ELEV. B

The Willowglen



SECOND LEVEL  
ELEV. B

\* Floor plan may vary due to grading conditions.



SERVERY SINK

Phone: 416-742-1888 | Fax: 416-742-6888  
www.boscocanada.com | info@boscocanada.com  
5171 Steeles Avenue West | Toronto, Ontario M9L 1R5

Builder Series - Model:207029  
Undermount

Rear positioned drain holes to maximize  
usable bowl and cabinet storage space below

Specifications:

- 304 Stainless Steel
- 18 Gauge
- Strainer
- Undermount Clips
- 7" Deep

Outside:  
12 5/8" x 18" x 7"  
Inside:  
10 5/8" x 16" x 7"

Minimum cabinet size 15"

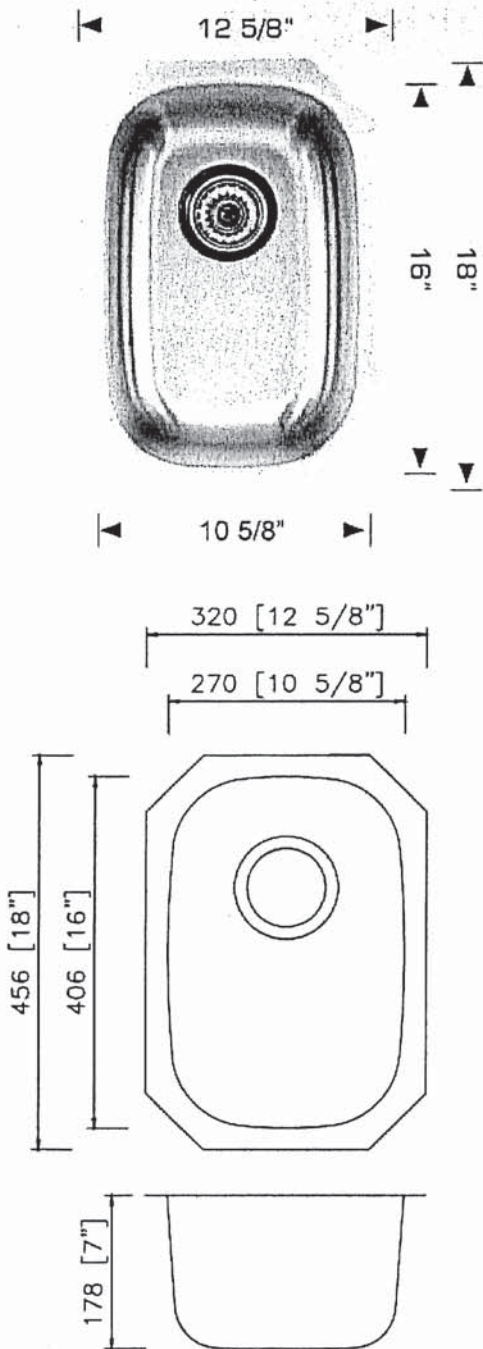
Certification/Warranty

- ASME A 112.19.3
- CSA B45.4
- Limited Lifetime Warranty

Optional Accessories



Model: G207029  
Grid



Bosco Canada Inc. is known around the world for producing high quality kitchen sinks that incorporate modern design and functional superiority in every piece they manufacture.

MOEN®

SERUERY FAUCET

Specifications

FAUCET DESCRIPTION

- Reflex™ pulldown system offers smooth operation, easy movement and secure docking
- Power Clean™ spray technology
- Metal construction with various finishes identified by suffix
- Quick connect installation
- Pulldown spray with 68" braided hose
- Flexible supply lines with 3/8" compression fittings
- High arc spout provides the perfect height and reach for prep sinks while the pulldown feature provides maneuverability for food preparation tasks
- 360° rotating spout provides ability to install handle on either side
- Faucet designed for handle to be mounted on right side

OPERATION

- Lever style handle
- Temperature controlled by 100° arc of handle travel
- Operates with less than 5 lbs. of force
- Operates in stream or spray mode in the pullout or retracted position

FLOW

- Flow is limited to 1.5 gpm (5.7 L/min) max at 60 psi

CARTRIDGE

- 1255™ Duralast™ cartridge for Single-Handle Faucets

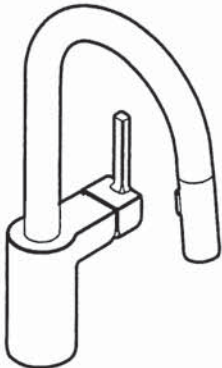
STANDARDS

- Third party certified to IAPMO Green, ASME A112.18.1/CSA B125.1 and all applicable requirements referenced therein including NSF 61/9G & 372
- Meets CalGreen and Georgia SB370 requirements
- Complies with California Proposition 65 and with the Federal Safe Drinking Water Act
- The backflow protection system in the device consists of two independently operating check valves, a primary and a secondary which prevent backflow

- ADA  for lever handle

WARRANTY

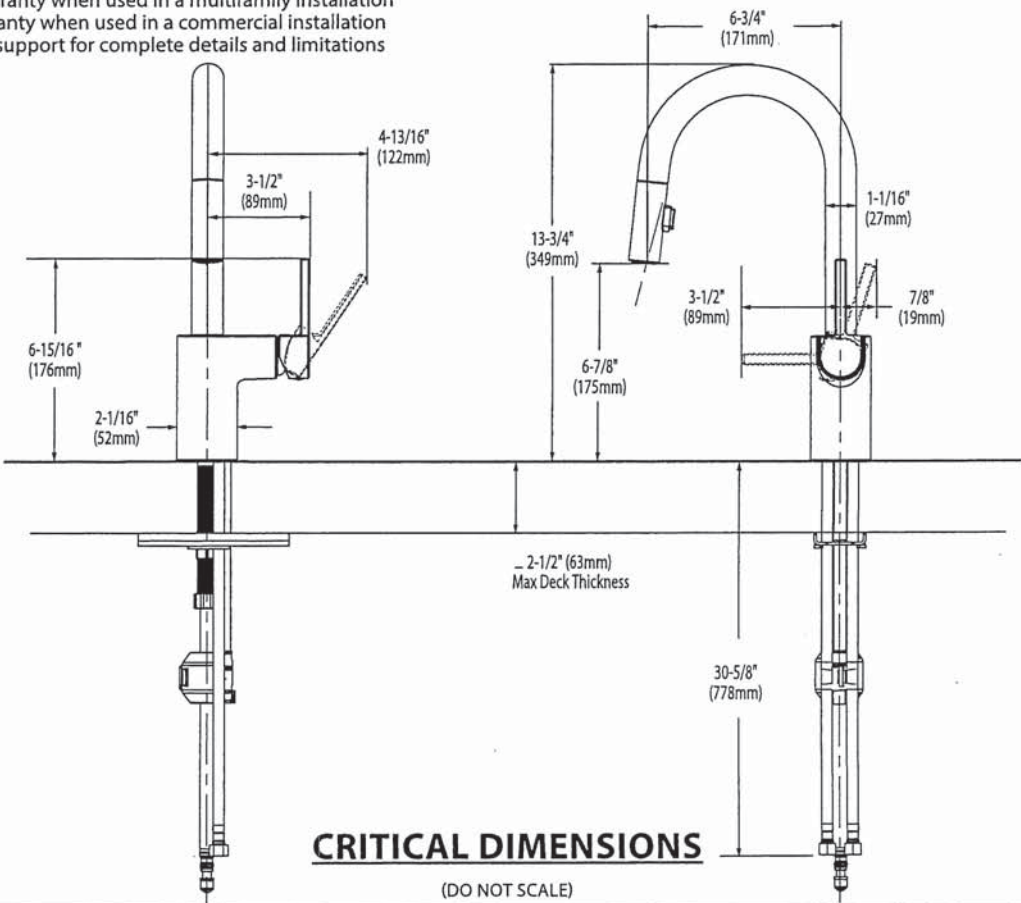
- Lifetime limited warranty against leaks, drips and finish defects to the original homeowner
  - 10 year limited warranty when used in a multifamily installation
  - 5 year limited warranty when used in a commercial installation
- Visit [www.moen.com/support](http://www.moen.com/support) for complete details and limitations



ALIGN™  
Single Handle High Arc  
Pulldown Prep/Bar Faucet

Models: 5965 series

NOTE: THIS FAUCET IS DESIGNED TO BE INSTALLED  
THROUGH 1 HOLE, 1-1/2" (38mm) MIN. DIA.  
(OPTIONAL 3-HOLE ESCUTCHEON 141002 AVAILABLE)

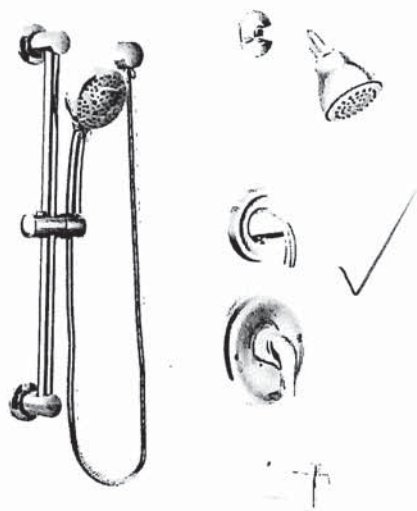




Chateau®

PRINCIPAL ENSUITE SHOWER

POSI-TEMP®



Posi-Temp® Tub/Shower Faucet with  
3 Function Transfer Valve/Trim and  
Slide Bar with Hand Shower\*

TL183EP / U361CI / UT2721 / 3669EP /  
A725 / 62320



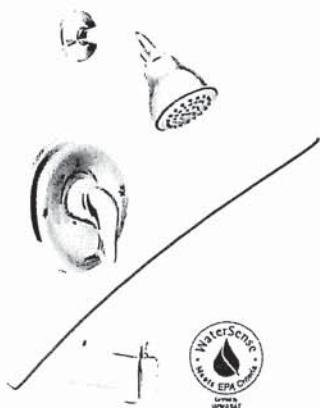
Posi-Temp® Shower Only with 3  
Function Transfer Valve/Trim and  
Slide Bar with Hand Shower\*

TL182EP / U361CI / UT2721 /  
3669EP / A725 / 62320



Posi-Temp® Tub/Shower Faucet  
with 4 Function Hand Shower\*

TL2359EP / 62320



Eco-Performance Posi-Temp®  
Tub/Shower Faucet\*

TL183EP / 62320



Eco-Performance Posi-Temp®  
Shower Only\*

TL182EP / 62320

CHATEAU  
FINISH OPTION



Chrome

To order Chrome (C) model, use  
model number only.  
\* Refer to the Shower Design Guide  
for Installation Instructions