



CONSTRUCTION SUMMARY

Teefy Developments Limited / 9130 Bathurst

Lot/Unit: 96 Phase/Building: 1 Model/Floor Plan: Riverdale(22-3)

AUDIO AND SECURITY

Inv.3421	1 - TO LOCATE TWO (2) STANDARD ROUGH IN TELEPHONE OUTLETS INCLUDED IN OFFER ONE (1) IN MASTER BEDROOM ONE (1) RECREATION ROOM	
Line 43874	Note: LOCATION AS PER SKETCH ATTACHED	
2Dec15 / 2Dec15		
Inv.3421	1 - TO LOCATE THREE (3) STANDARD ROUGH IN CABLE OUTLES INCLUDED IN OFFER ONE (1) IN RECREATION ROOM ONE (1) IN MASTER BEDROOM ONE (1) IN FAMILY ROOM	
Line 43875	Note: LOCATION AS PER SKETCH ATTACHED	
2Dec15 / 2Dec15		

CABINETRY ACCESSORIES

Inv.3421	3 - LOCATION: KITCHEN LIGHT VALANCE - NOT APPLICABLE FOR THERMOVISION - PRICE PER 8 FOOT LENGTH	
Line 43904	Note:	
2Dec15 / 2Dec15		

CABINETRY APPLIANCE - FRIDGE

Inv.3421	1 - LOCATION: KITCHEN 59 CM FRIDGE CABINET - 2 GABLES & CABINET 59 CM DEEP - DEEP - UPGRADE 1	
Line 43872	Note:	
2Dec15 / 2Dec15		

CABINETRY HOOD FANS

Inv.3421	1 - LOCATION: KITCHEN ACCOMMODATE FOR MICROWAVE HOOD FAN COMBO - PURCHASER MUST SUPPLY SPECS	
Line 43914	Note:	
2Dec15 / 2Dec15		

CABINETRY VANITY

Inv.3421	1 - LOCATION: MASTER ENSUITE VANITY BANK OF DRAWERS - 55 CM MAXIMUM - UPGRADE 1	
Line 43912	Note: TO BE CENTRED BETWEEN VANITIES	
2Dec15 / 2Dec15		

COUNTER TOP - KITCHEN

Inv.3421	5 - LOCATION: ALL BATHROOMS SUPPLY AND INSTALL GRANITE CUTOUT AND POLISHED EDGE FOR UNDERMOUNT SINK	
Line 43923	Note: UNDERMOUNT SINK PURCHASED SEPARATELY.	
2Dec15 / 2Dec15		



CONSTRUCTION SUMMARY

Teefy Developments Limited / 9130 Bathurst

Lot/Unit: 96 Phase/Building: 1 Model/Floor Plan: Riverdale(22-3)

COUNTER TOP - VANITY

Inv.3421	1 - LOCATION: MASTER ENSUITE	
	SUPPLY AND INSTALL 2CM STONE COUNTER TOP WITH STANDARD SQUARE EDGE – GROUP 5 IN THE ENSUITE - BATHROOM	
Line 43892	Note: CAESARSTONE - 5212 TAJ ROYALE (WITH STD SQUARE EDGE)	
2Dec15 / 2Dec15		

ELECTRICAL

Inv.3421	1 - LOCATION: KITCHEN	
	SUPPLY AND INSTALL ADDITIONAL INTERIOR RECEPTACLE ON SEPARATE CIRCUIT (IE: MICROWAVE, FREEZER) TO ACCOMMODATE A FUTURE OVER THE RANGE MICROWAVE.	
Line 43915	Note: APPLIANCE TO BE SUPPLIED AND INSTALLED BY PURCHASER AFTER CLOSING	
2Dec15 / 2Dec15		
Inv.3421	1 - SUPPLY AND INSTALL LIGHT VALANCE ROUGH IN (INCLUDES 1 SWITCH)	
Line 43905	Note: LOCATION AS PER SKETCH ATTACHED.	
2Dec15 / 2Dec15		

HARDWOOD

Inv.3421	1 - LOCATION: UPPER HALLWAY	
	SUPPLY AND INSTALL HARDWOOD - UPGRADE 1 - SATIN FINISH GEN. - HOME OAK 3 5/8 INCH X 3/4 INCH - STAIN - - UPPER HALL	
Line 43883	Note: COLOUR: COBALT	
2Dec15 / 2Dec15		

HEATING AND AIR CONDITIONING

Inv.3427	1 - LOCATION: KITCHEN	
	GAS LINE - ROUGH-IN ONLY - FOR STOVE TO INCLUDE 110V CODE REQUIREMENT	
Line 44064	Note:	
5Dec15 / 5Dec15		

MISCELLANEOUS

Inv.3421	1 - DECOR BONUS - NO CASH VALUE - INCLUDED IN OFFER	
Line 43871	Note:	
2Dec15 / 2Dec15		
Inv.3421	1 - LOCATION: FAMILY ROOM	
	SUPPLY AND INSTALL FURRED OUT WALL TO RECESS ELECTRIC FIREPLACE. WALL TO BE APPROXIMATELY 6 FEET +/- WIDE AND APPROXIMATELY 10 INCHES +/- DEEP FROM FLOOR TO CEILING.	
Line 43876	Note: PRICE INCLUDES RELOCATION OF STANDARD CABLE TV ROUGH-IN CABLE AND ELECTRICAL OUTLET.	
2Dec15 / 2Dec15		



CONSTRUCTION SUMMARY

Teefy Developments Limited / 9130 Bathurst

Lot/Unit: 96 Phase/Building: 1 Model/Floor Plan: Riverdale(22-3)

Inv.3421	1 - LOCATION: ALL BATHROOMS SUPPLY AND INSTALL GRANITE FROM VENDOR'S STANDARD SAMPLES (WITH STANDARD SQUARE EDGE) TO ALL BATHROOMS INCLUDED IN SCHEDULE PE ITEM #8	
Line 43879	Note:	
2Dec15 / 2Dec15		
Inv.3421	1 - LOCATION: ALL BEDROOMS SUPPLY AND INSTALL STANDARD LINE HARDWOOD (FROM VENDOR'S STANDARD SAMPLES) TO ALL BEDROOMS - EXCLUDING UPPER HALLWAY INCLUDED IN SCHEDULE PE ITEM #7	
Line 43880	Note: 3/4" X 3-5/8" GENERATIONS SATIN FINISH RED OAK - COBALT COLOUR	
2Dec15 / 2Dec15		
Inv.3421	1 - LOCATION: MASTER ENSUITE SHOWER FLOOR SUPPLY AND INSTALL UPGRADE 1 FLOOR TILE TO SHOWER STALL IN LIEU OF STANDARD	
Line 43888	Note: 2 X 2 ONTARIO MOSAIC BISCUIT MATTE (OD.ON.BIS.0202.MT)	
2Dec15 / 2Dec15		
Inv.3421	1 - LOCATION: KITCHEN SUPPLY AND INSTALL FASCIA PANEL AND CROWN MOULDING TO UPPER CABINETS IN KITCHEN TO CLOSE OFF SPACE BETWEEN CEILING AND UPPER CABINETS	
Line 43906	Note:	
2Dec15 / 2Dec15		

PLUMBING

Inv.3421	5 - LOCATION: ALL BATHROOMS SUPPLY AND INSTALL UNDERMOUNT SINKS TO ALL BATHROOMS CALVIN MODEL #4220CFY - WHITE	
Line 43925	Note:	
2Dec15 / 2Dec15		
Inv.3421	1 - LOCATION: MASTER ENSUITE SHOWER FRAMELESS GLASS SHOWER ENCLOSURE WITH CHROME TOP FRAME ONLY	
Line 43899	Note:	
2Dec15 / 2Dec15		

STAIRS AND RAILING

Inv.3421	1 - RAILING - UPGRADE 2A - 3 INCH OVAL OAK, PICKETS -1 3/4 INCH SQUARE, CHAMFERED OAK, POSTS - 3 1/2 INCH SQUARE, CHAMFERED, WITH CAP OAK - SUPPLY AND INSTALL	
Line 43901	Note:	
2Dec15 / 2Dec15		

TILE - FLOOR



CONSTRUCTION SUMMARY

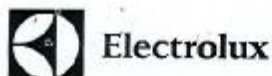
Teefy Developments Limited / 9130 Bathurst

Lot/Unit: 96 Phase/Building: 1 Model/Floor Plan: Riverdale(22-3)

Inv.3421	1 - LOCATION: MASTER ENSUITE	
Line 43891	SUPPLY AND INSTALL FLOOR TILE - UPGRADE 2 - - ENSUITE BATHROOM FLOOR Note: 13 X 13 VENUS BROWN (GE.VN.BWN.1313.MT)	
2Dec15 / 2Dec15		
Inv.3421	1 - LOCATION: FOYER	
Line 43908	SUPPLY AND INSTALL FLOOR TILE - UPGRADE 5 - - VESTIBULE FLOOR Note: 12 X 24 MUST POLISHED BROWN (OV.MU.BWN.1224.PL) STANDARD STACKED INSTALL	
2Dec15 / 2Dec15		
Inv.3421	1 - LOCATION: POWDER ROOM	
Line 43910	SUPPLY AND INSTALL FLOOR TILE - UPGRADE 5 - - POWDER ROOM FLOOR Note: 12 X 24 MUST POLISHED BROWN (OV.MU.BWN.1224.PL) STANDARD STACKED INSTALL	
2Dec15 / 2Dec15		

EXTRAS AS PER OFFER

Stainless Steel Fridge, Stove and Dishwasher and front loading washer and dryer in white from Vendors standard samples, no cash value, not transferable. (Supplied only not installed) ** to - arrange delivery call: The Brick commercial sales division at Worksheet Note:	
Rogers Free Services Package includes 6 months of: home phone, TV and Internet Service. Worksheet Note:	
The Vendor agrees to supply and install optional lower level bedroom at no charge, from Vendors standard samples. Worksheet Note:	
The Vendor agrees to supply and install hardwood flooring in all bedrooms and recreation room, with a choice of stain, from Vendors standard samples. Worksheet Note:	
The Vendor agrees to supply and install granite countertops in all bathrooms, including powder room, from Vendors standard samples. Worksheet Note:	



French Door Refrigerators

EI23BC30K S, EI23BC30K W, EI23BC30K B

Featuring IQ-Touch™ Electronic Controls



Most Usable Capacity¹

Most usable space inside, same space on the outside, so you'll have space for everything from party platters and beverages to kids' snacks and juice boxes.



IQ-Touch™ Controls Located on the Side of the Door

This IQ-Touch™ control panel displays your options at all times.



Luxury-Glide® Cool Zone™ Drawer

This drawer keeps contents chilled, so it's perfect for wine and beer or even snacks and juice boxes.



SpillSafe® Sliding Glass Shelves

SpillSafe® glass shelves slide out for easy access and are designed to keep spills contained, making cleanup a breeze.

23 CU. FT. COUNTER-DEPTH FRENCH DOOR REFRIGERATORS

Capacities	
Total Capacity	22.6 Cu. Ft.
Fresh Food Volume	15.62 Cu. Ft.
Freezer Volume	6.93 Cu. Ft.
Total Shelf Area	24.88 Sq. Ft.
Fresh Food Shelf Area	19.53 Sq. Ft.
Freezer Shelf Area	5.35 Sq. Ft.

Exterior	
Signature Soft-Arc Door and Handle Design	Yes
Electronic Controls	IQ-Touch™
Hidden Hinge Door Design	Yes

Fresh Food Conveniences	
Perfect Set™ Temperature Control System and Display	Yes
PureAdvantage® Water & Ice	Yes
PureAdvantage® Air Filtration	Yes
Water Filter Location	Bottom Left
Temp Alarm System	Yes
Door Ajar Alarm	Yes
Power Failure Alarm	Yes
Glass Shelves	4 SpillSafe® Sliding Half Width

Humidity-Controlled Left Crisper	Luxury-Glide®
Humidity-Controlled Right Crisper	Luxury-Glide®
Perfect Temp® Drawer	
Cool Zone™ Drawer	Luxury-Glide®
Wine and Beverage Mat	
Clear Gallon Door Bins (Adjustable)	2
Clear 2-Liter Door Bins (Adjustable/Removable)	2/0
1/2-Gallon Door Bins	
Clear Condiment Bin	2
Clear Dairy Door	
Tilt-Out Can Racks	2
Luxury-Design® LED Ramp-Up Multilevel Lighting	Yes

Freezer Conveniences	
Automatic Ice Maker	Yes
Ice Maker On/Off	Yes
Fast Ice™	Yes
Fast Freeze™	Yes
Self-Closing Drawer	Yes
Sliding Freezer Baskets	2 Luxury-Glide® (1 Deep Plastic w/Divider)

Soft Freeze™ Bin	
Pizza Bin	
Tilt-Out Door Racks	
Plastic Basket Tray	
Luxury-Design® LED Ramp-Up Multilevel Lighting	Yes

Additional Features	
ENERGY STAR®	Yes
Sebbast Mode (Star-K® Certified)	Yes

Specifications	
Color -	
Stainless Steel	S
White	W
Black	B

Product Dimensions -	
Height (with Hinges and 3/8" Rollers)	69-1/2"
Cabinet Width/Door Width	35-5/8"/36"
Depth to Center of Arc	38-3/16"
with 90° Door Open	42-9/16"
with Drawer Fully Extended (Including Handle)	45-7/8"

Power Supply Connection Location	Right Bottom Rear
Water Inlet Location	Left Bottom Rear
Voltage Rating	120V/60 Hz/15 or 20A
Connected Load (kW Rating) @ 120 Volts†	1.02
Minimum Circuit Required (Amps)	15
Shipping Weight (Approx.)	347 lbs.

†An electrical supply with grounded three-prong receptacle is required. The power supply circuit must be installed in accordance with current edition of National Electrical Code (NFPA 70) and local codes & ordinances.

NOTE: Always consult local and national electric & plumbing codes. Refer to Product Installation Guide for detailed installation instructions on the web at electroluxappliances.com.

Specifications subject to change.

¹As compared to other French Door Counter-Depth models.

electroluxappliances.com

9130-Lot 96

SENATOR HOMES
DECOR CENTRE

DATE: DEC 5/15

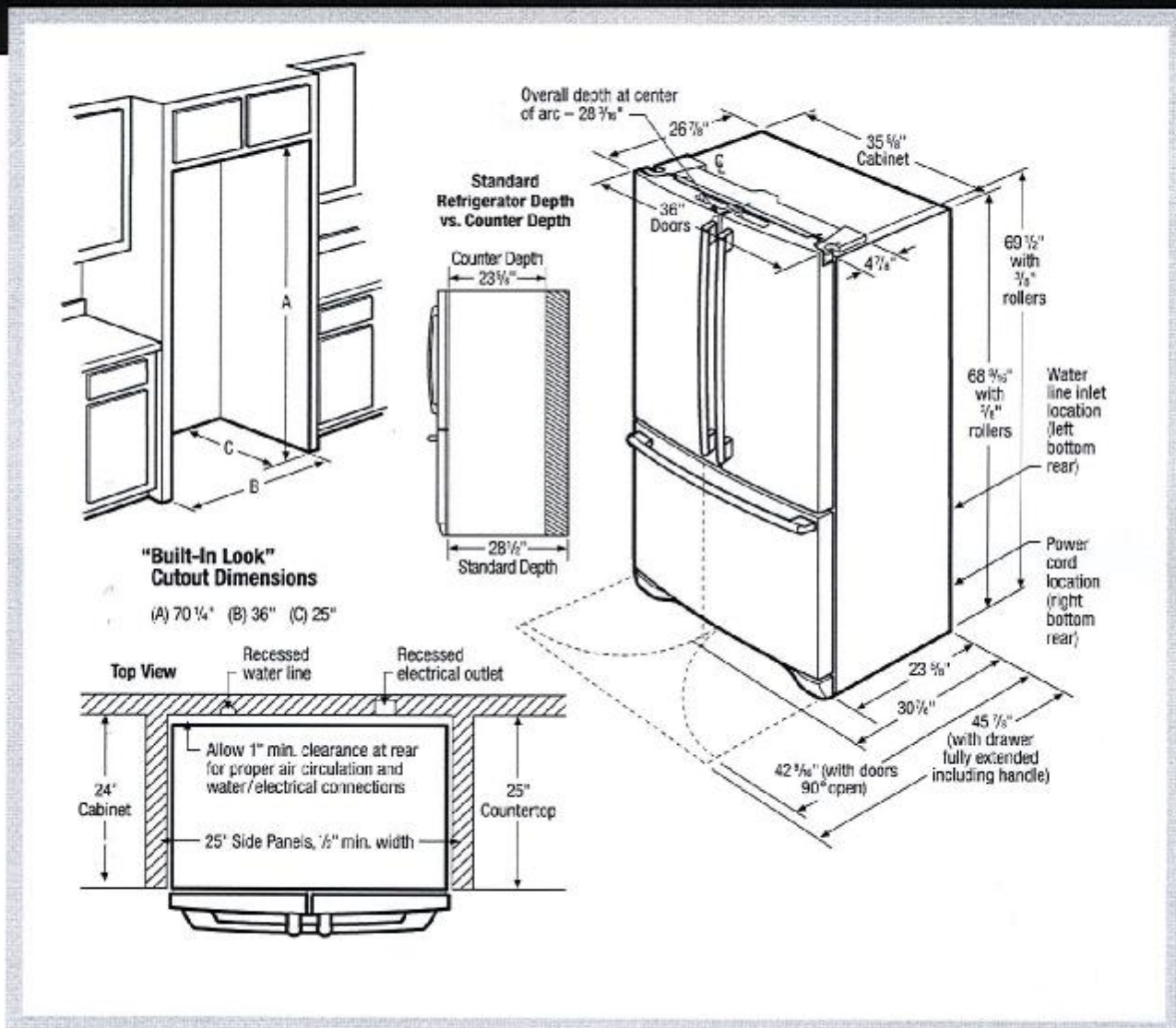
INITIALS: A.H.

French Door Refrigerators

EI23BC30K S, EI23BC30K W, EI23BC30K B



Electrolux



Counter-Depth French Door Refrigerator Specifications

- Product Weight - 342 Lbs.
- An electrical supply with grounded three-prong receptacle is required. The power supply circuit must be installed in accordance with current edition of National Electrical Code (NFPA 70) and local codes & ordinances.
- Voltage Rating - 120V/60 Hz/15 or 20 Amps
- Connected Load (kW Rating) @ 120 Volts = 1.02 kW
- Amps @ 120 Volts = 8.5 Amps
- Always consult local and national electric & plumbing codes.
- Floor should be level surface of hard material, capable of supporting fully loaded refrigerator.
- When installing refrigerator adjacent to wall, cabinet or other appliance that extends beyond front edge of unit, 20" minimum clearance recommended to allow for optimum 120° to 180° door swing, providing complete drawer/crisper access and removal. (Absolute 4-1/2" minimum clearance will ONLY allow for 90° door swing which will provide drawer/crisper access with restricted removal.)
- To ensure optimum performance, avoid installing in direct sunlight or close proximity to range, dishwasher or other heat source.

- For proper ventilation, front grille MUST remain unobstructed.
- Recess electrical outlet when possible.
- Water recess on rear wall recommended to prevent water line damage.
- Water Pressure - Cold water line must provide between 30 and 100 pounds per square inch (psi).
- Copper tubing with 1/4" O.D. recommended for water supply line with length equal to distance from rear of unit to household water supply line plus 7 additional feet. Optional Water Supply Installation Kits available.
- Adjustable front rollers to assist with door alignment.

"Built-In Look" Specifications

- Minimum opening of 70-1/4" H x 36" W x 25" D required to allow for ease of installation, proper air circulation, and plumbing/electrical connections.
- Remove all wall/floor molding prior to installation.

Note: For planning purposes only. Refer to Product Installation Guide on the web at electroluxappliances.com for detailed instructions.

Electrolux Major Appliances, N.A.

USA • 10200 David Taylor Drive • Charlotte, NC 28262 • 1-877-4electrolux (1-877-435-3287) • electroluxappliances.com
 CANADA • 5855 Terry Fox Way • Mississauga, ON L5V 3E4 • 1-800-265-8352 • electroluxappliances.ca



High standards of quality at Electrolux Home Products, Inc. mean we are constantly working to improve our products. We reserve the right to change specifications or discontinue models without notice.

9130-Lot 96

SENATOR HOMES
DECOR CENTRE

DATE: Dec 5/15
 INITIALS: Ad

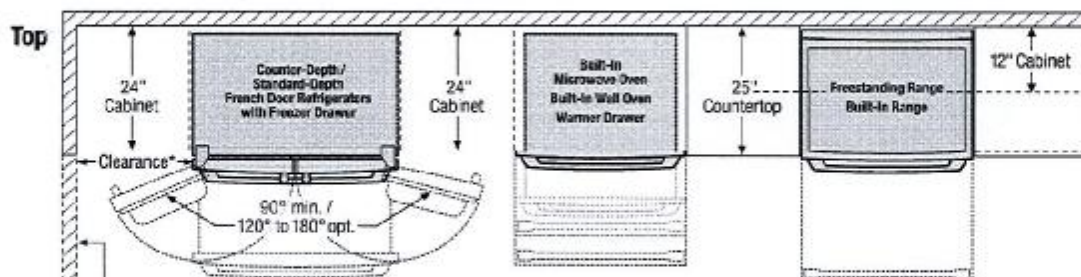
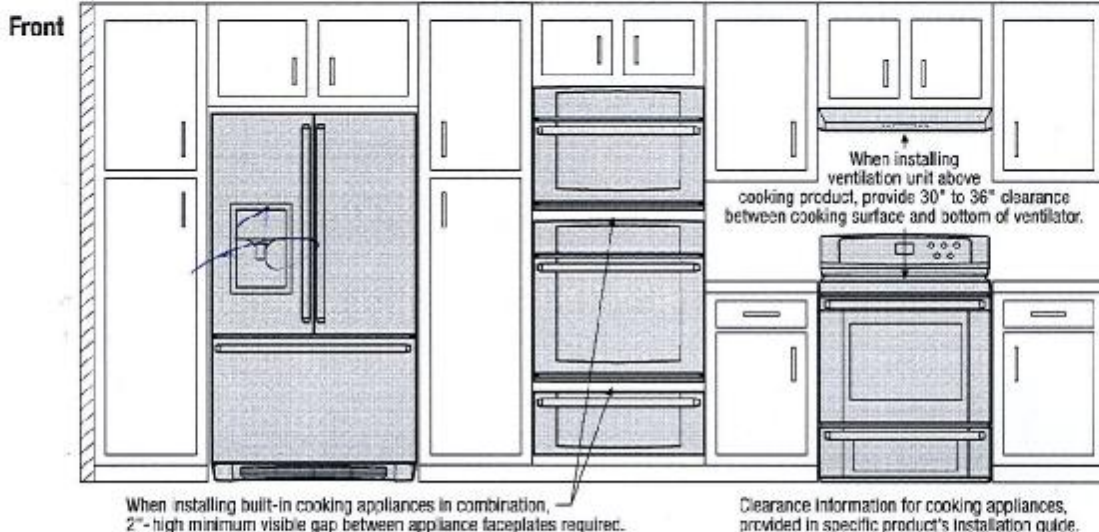
General Installation Guidelines

For Installation with French Door Refrigerator



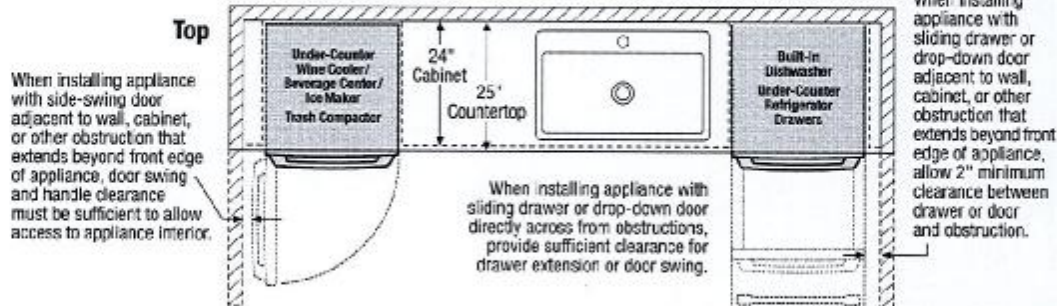
Electrolux

Use these dimensions and clearance instructions for planning purposes only. For detailed installation instructions, refer to installation guide, packed with product, or on the web at electroluxappliances.com.



*When installing a French door refrigerator adjacent to wall, cabinet or another appliance that extends beyond front edge of unit, 20" minimum clearance recommended to allow for optimum 120° to 180° door swing, providing complete drawer/crisper access and removal. (Absolute 4-1/2" minimum clearance will ONLY allow for 90° door swing which will provide limited drawer/crisper access with restricted removal.)

When installing appliance with sliding drawer or drop-down door directly across from obstructions, provide sufficient clearance for drawer extension or door swing.



Electrolux Major Appliances, N.A.

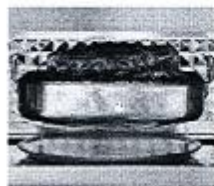
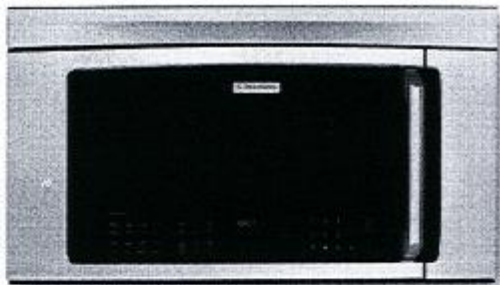
USA • 10200 David Taylor Drive • Charlotte, NC 28262 • 1-877-4electrolux (1-877-435-3297) • electroluxappliances.com
CANADA • 5855 Terry Fox Way • Mississauga, ON L5V 3E4 • 1-800-265-8352 • electroluxappliances.ca

High standards of quality at Electrolux Home Products, Inc. mean we are constantly working to improve our products. We reserve the right to change specifications or discontinue models without notice.

9130-Lot 96
SENATOR HOMES
DECOR CENTRE
DATE: Apr 5/16
INITIALS: [Signature]

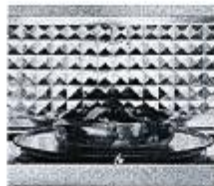
Over-the-Range Microwave

EI30BM6CPS



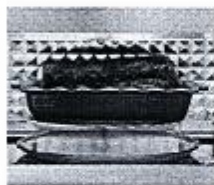
Convection Cooking

Gives you oven results at microwave speed — perfect for roasting, cooking and baking everything from steaks to cupcakes.



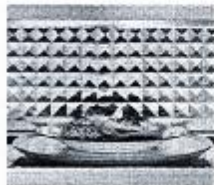
Cook-2-Perfection® Technology

Uses a diamond-design rear wall, plus stirring fan and turntable to heat your food evenly every time.



Quartz Grill Element

Provides a true oven bake finish.



Auto-Cook Options

Cook display prompts you through Quick Meal options and Dinner Recipes.

30" OVER-THE-RANGE CONVECTION MICROWAVE

Oven Cavity	1.8 Cu. Ft.
Watts	1000
Oven Interior	Stainless Steel
Interior Light	Yes
14-1/4" Glass Turntable	Yes

Control Panel Features

IG-Touch™ Electronic Controls	Yes
Convection	Yes
Front Display with Blue LED	Yes
Electronic Clock & Timer	Yes
Humidity Sensor	Yes
Power Levels	10
Touch Pad Controls	31
Fast Cook Options	Yes
Cook-2-Perfection® Technology	Yes
Auto-Start	Yes
Auto-Defrost Options	5
Auto-Cook Options – Quick Meal (4), Dinner Recipes (5)	9
Auto-Melt/Soften Options – Ice Cream (1), Cream Cheese (1), Butter (1), Chocolate (1)	4
Auto-Reheat Options – Breads (2), Pasta (1)	3
Beverage (0.5 – 2.0 Cups)	Yes
Sensor-Cook Options – Cook (5), Reheat (1), Popcorn (1), Baked Potato (1), Frozen Vegetables (1), Fresh Vegetables (1)	10
Multi-Stage Cooking Options	4
Shortcut Options	5
Add 30 Seconds	Yes
Custom Help Options	5
Panel Lock	Yes
Demo Mode	Yes
Adjustable Sound Level For Timers/Reminders	Yes
More/Less Function	Yes

Additional Features

Signature Soft-Arc Oven Door and Handle Design	Yes
Glass Window	Yes

Ventilation System

Hood Fan	Yes
Exhaust Duct	Convertible*
Exhaust Fan (400 CFM)	4-Speed
Charcoal Filters (Recirculated Installation)	1
Grease Filters	2

Accessories

Metal Rack	Included
36" Filter Kit Stainless Steel – PN A MW/PLXTSS	Optional

Specifications

Colour –	Stainless Steel
Oven Cavity Dimensions –	
Height	9-15/16"
Width	29-1/4"
Depth	14-23/32"
Product Dimensions –	
Height (Including Lower Extrusion)	17-9/16"
Width	29-7/8"
Depth (to Centre of Arc – including Rear Extrusion)	17-3/8"
Power Supply Connection Location	Right Top Rear
Voltage Rating	120V/60Hz/15A
Connected Load (kW Rating) @ 120 Volts†	1.71
Amps @ 120 Volts	14.3
Frequency (MHz)	2450
Microwave – Watts @ 120 Volt input	1000
Convection – Watts @ 120 Volt input	1500
40" Electrical Cable	Included
Shipping Weight (Approx.)	65 lbs

*Ventilation system is preset to recirculate air inside with no ducting. Converting to exterior exhaust is optional.

† For use on adequately wired 120V, dedicated circuit having 2-wire service with a separate ground wire. Appliance must be grounded for safe operation.

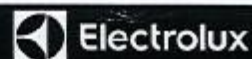
NOTES: Always consult local and national electric codes. Refer to Product Installation Guide for detailed installation instructions on the web at electroluxappliances.ca. Specifications subject to change.

electroluxappliances.ca

9130-Lot 96
SENATOR HOMES
 DECOR CENTRE
 DATE: Dec 5/15
 INITIALS: Ad

Over-the-Range Microwave

EI30BM6CPS

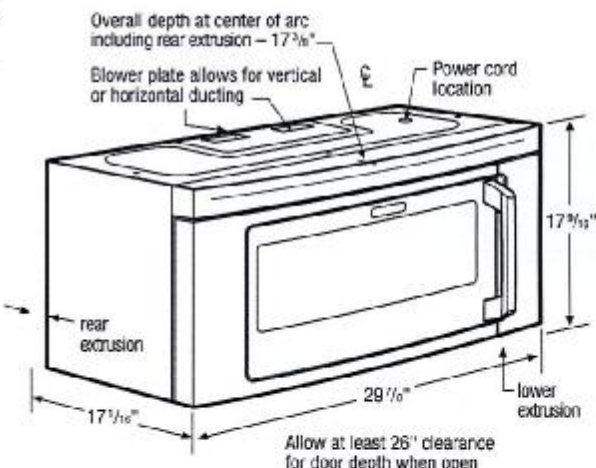
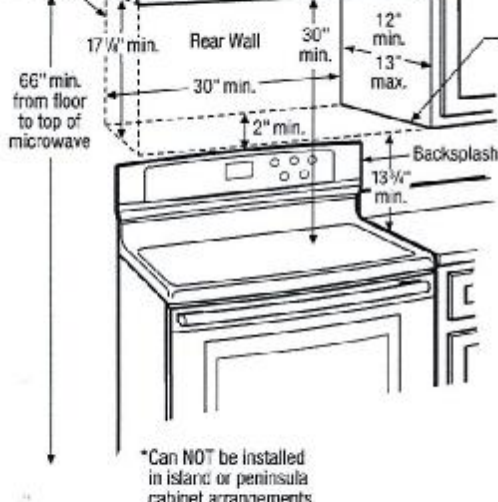


Locate 120V/60Hz grounded outlet inside upper cabinet

Microwave MUST be mounted to BOTH a top cabinet AND a wall*

Bottom edge of cabinet MUST be 30" min. from cooking surface

Cabinet MUST be capable of supporting a total load of 135 lbs.



30" Over-the-Range Microwave Specifications

- Product Weight - 70 Lbs.
- Voltage Rating - 120V/60 Hz/15 Amps
- Connected Load (kW Rating) @ 120 Volts = 1.71 kW (For use on adequately wired 120V, dedicated circuit having 2-wire service with a separate ground wire. Appliance must be grounded for safe operation.)
- Amps @ 120 Volts = 14.3 Amps
- Always consult local and national electric codes.
- Grounded outlet should be located in cabinet above, with hole in base to route power cord. Carefully follow top template instructions for power cord clearance when installing beneath smooth, flat cabinets.
- Microwave's ventilation system is preset to recirculate air inside with no ducting system required. Exhausting air outside is optional, using either vertical or horizontal ducting system. (Refer to Ducted Option Specifications for outside ventilation.)
- For safe and proper installation, microwave MUST be mounted to BOTH a top cabinet AND a wall, and connected to at least one wall stud. Can NOT be installed in island or peninsula cabinet arrangements.
- Cabinet bottom MUST be level to insure proper installation.
- Cabinet MUST be capable of supporting a total load of 135 lbs.
- Filler blocks recommended for installation when cabinet front hangs below recessed bottom shelf.
- Minimum distance of 30" required from cooking surface to bottom edge of top cabinet.
- Minimum distance of 66" required from floor to top of microwave.
- Opening between cabinets MUST be 30" wide and free of obstructions. For openings up to 36" wide, order optional 36" Filler Kit to fill in gap between unit and cabinets.
- Allow 26" minimum clearance for 90° door swing.

Ducted Option Specifications

- For outside ventilation.
- Exhaust duct adapter will be needed for outside ventilation, to mate with standard 3-1/4" x 10" rectangular duct. If round duct required, rectangular-to-round transition adapter will be needed with no more than 6" diameter.
- For most efficient airflow exhaust, use a straight run or as few elbows as possible with a maximum duct length of 3-1/4" x 10" rectangular or 6" diameter round duct, not to exceed 120 equivalent feet.
- For horizontal installation, be sure to allow enough space between wall studs to accommodate exhaust.
- Refer to installation instructions on web for detailed duct preparation and converting exhaust vent blower system for exterior exhaust ventilation.

Note: For planning purposes only. Refer to Product Installation Guide on the web at electroluxappliances.ca for detailed instructions.

Optional Accessories

- 36" Filler Kit: S - (PN # MWFIKTSS).

Electrolux Major Appliances, N.A.

CANADA - 5855 Terry Fox Way • Mississauga, ON L5V 3E4 • 1-800-265-8352 • electroluxappliances.ca



High standards of quality at Electrolux Home Products, Inc. mean we are constantly working to improve our products. We reserve the right to change specifications or discontinue models without notice.

9/30-Lot 96

SENATOR HOMES
DECOR CENTRE

DATE: Dec 5/15
INITIALS: A.H.



INTERIOR COLOUR SCHEME

Purchaser: Anna Litvinova
Telephone Res. / Bus: (416) 897-2744 /
Decor Advisor: Steffanee Appio

Property: 96 of Plan -
Project: Teefy Developments Limited
Model and Elevation: Riverdale(22-3)

Layout Changes: ☐ Yes ☒ No Sketch Attached: ☒ Yes ☐ No Exterior Colour Scheme:

1. Cabinetry

	Style and Colour	Counter Top	Hardware
Kitchen / Breakfast	CLASS - OTTAWA PAINT MACADEMIA	9141 ICE SNOW STD SQ EDGE	HANDLE 9677
Kitchen Island	CLASS - OTTAWA PAINT MACADEMIA	9141 ICE SNOW STD SQ EDGE	HANDLE 9677
Laundry Room	CLASS - CAMDEN PAINT WINTER WHITE	N/A	KNOB 196
Powder Room	CLASS - CAMDEN PAINT CANNOLI	GRIGIO SARDO STD SQ EDGE	KNOB 171
Main Bathroom	CLASS - MUSKOKA ONTARIO WHITE	GRIGIO SARDO STD SQ EDGE	KNOB 151
Master Ensuite Bathroom	CLASS - MANCHESTER CANNOLI	5212 TAJ ROYALE STD SQ EDG	KNOB 171
Second Ensuite Bathroom (If Applicable)	CLASS - CAMDEN PAINT WINTER WHITE	NEW CALEDONIA STD SQ EDG	KNOB 196
	LOWER LEVEL BATHROOM	LOWER LEVEL BATHROOM	LOWER LEV BAT

Appliances

Custom Size Fridge

☐ Yes ☒ No

Valance Lighting

☒ Yes ☐ No

Microwave / Range Hood

☐ Yes ☒ No

Cooktop / Rangetop

☐ Yes ☒ No

Built in Wall Oven

☐ Yes ☒ No

Slide-in Range

☒ Yes ☐ No

Comment

STANDARD GRANITE IN ALL BATHROOMS (WITH STANDARD EDGE) INCLUDED IN SCHEDULE PE ITEM #8
UPGRADE 5 CAESARSTONE - MASTER ENSUITE ***TAJ ROYALE 5212 WITH STANDARD SQUARE EDGE

2. Flooring

Selection

FOYER	12 X 24 MUST POLISHED BROWN (OV.MU.BWN.1224.PL) UPGRADE 5 STD STACKED INSTALL
Main Hall	3/4" X 3-5/8" GENERATIONS SATIN FINISH RED OAK - COBALT
Back Hall	N/A
Breakfast	3/4" X 3-5/8" GENERATIONS SATIN FINISH RED OAK - COBALT
Laundry Room	13 X 13 COSTA GREY MATTE (GE.CA.GRY.1313.MT)
Kitchen	3/4" X 3-5/8" GENERATIONS SATIN FINISH RED OAK - COBALT
Powder Room	12 X 24 MUST POLISHED BROWN (OV.MU.BWN.1224.PL) UPGRADE 5 STD STACKED INSTALL
Main Bathroom	13 X 13 REFLEX OLIVE (GE.RF.OLV.1313)
Master Ensuite	13 X 13 VENUS BROWN (GE.VN.BWN.1313.MT) UPGRADE 2
Bathroom (If Applicable)	13 X 13 COSTA GREY MATTE (GE.CA.GRY.1313.MT) LOWER LEVEL BATHROOM
Mud Room	13 X 13 COSTA GREY MATTE (GE.CA.GRY.1313.MT)
Living Room	N/A
Dining Room	3/4" X 3-5/8" GENERATIONS SATIN FINISH RED OAK - COBALT
Family / Great Room	3/4" X 3-5/8" GENERATIONS SATIN FINISH RED OAK - COBALT
Den / Library / Study	3/4" X 3-5/8" GENERATIONS SATIN FINISH RED OAK - COBALT (RECREATION ROOM)
Basement Landing (If Applies)	N/A
Lower Landing (If Applicable)	3/4" X 3-5/8" GENERATIONS SATIN FINISH RED OAK - COBALT POWDER ROOM LANDING
Upper Landing	3/4" X 3-5/8" GENERATIONS SATIN FINISH RED OAK - COBALT
Upper Hall	3/4" X 3-5/8" GENERATIONS SATIN FINISH RED OAK - COBALT
Master Bedroom	3/4" X 3-5/8" GENERATIONS SATIN FINISH RED OAK - COBALT
Bedroom #2	3/4" X 3-5/8" GENERATIONS SATIN FINISH RED OAK - COBALT
Bedroom #3	3/4" X 3-5/8" GENERATIONS SATIN FINISH RED OAK - COBALT
Bedroom #4	3/4" X 3-5/8" GENERATIONS SATIN FINISH RED OAK - COBALT
Bedroom #5	N/A

Flooring Continued on Page 2

Initial: A.L.

Page 1 of 3



INTERIOR COLOUR SCHEME

Purchaser: Anna Litvinova
Telephone Res. / Bus: (416) 897-2744 /
Decor Advisor: Steffannee Appio

Property: 96 of Plan -
Project: Teefy Developments Limited
Model and Elevation: Riverdale(22-3)

2. Flooring - Continued -

Upgrade Underpad	Type	Area
	N/A	N/A
Carpet on Stairs	Capped	Runner - *Upgrade
Comment	N/A	N/A
HARDWOOD IN ALL BEDROOMS AS PER SCHEDULE PE ITEM #7 UPGRADE UPPER HALLWAY TO HARDWOOD IN LIEU OF CARPET		

3. Plumbing Fixtures / Faucets

Kitchen	STD	Second Ensuite		Powder Room	STD
Master Ensuite	STD			Other Room	STD
Main Bathroom	STD				

Comment

4. Wall Tile

	Tile Selection	Listello	Insert	Insert Selection
Main Bathroom	8 X 10 WEAVE WHITE (QT.WV.WHT.0810)	<input type="checkbox"/>	<input type="checkbox"/>	
Master Ensuite				
Tub Deck	N/A	<input type="checkbox"/>	<input type="checkbox"/>	
Tub Apron	N/A	<input type="checkbox"/>	<input type="checkbox"/>	
Tub Surround	N/A	<input type="checkbox"/>	<input type="checkbox"/>	2 X 2 MOSAIC BISCUIT (UPG)
Shower Stall	8 X 10 VENUS BROWN (GE.VN.BWN.0810)	<input type="checkbox"/>	<input type="checkbox"/>	SHOWER FLOOR
Second Ensuite	8 X 10 VENUS GREY (GE.VN.GRY.0810)	<input type="checkbox"/>	<input type="checkbox"/>	
	LOWER LEVEL BATHROOM TUB ENCLOSURE	<input type="checkbox"/>	<input type="checkbox"/>	
		<input type="checkbox"/>	<input type="checkbox"/>	
Kitchen Backsplash	N/A	<input type="checkbox"/>	<input type="checkbox"/>	
Complete Backsplash	N/A	<input type="checkbox"/>	<input type="checkbox"/>	

Comment

UPGRADE 1 - SHOWER FLOOR TILE 2 X 2 ONTARIO MOSAIC BISCUIT (OD.ON.BIS.0202.MT.N)

5. Fireplace

	Living Room			Family Room			Other Room - Specify		
	Purchased	As Per Plan	N/A	Purchased	As Per Plan	N/A	Purchased	As Per Plan	N/A
Fireplace Type	<input type="radio"/>	<input type="radio"/>	<input type="radio"/>	<input type="radio"/>	<input checked="" type="radio"/>	<input type="radio"/>	<input type="radio"/>	<input type="radio"/>	<input type="radio"/>
Mantle Type				BLF-50 STANDARD					
Over Mantle									
Colour / Stain									
Surround									
Hearth									

Comment

*****FURR OUT WALL TO ACCOMMODATE RECESSED FIREPLACE *****UPGRADE

Initial:

AL

Page 2 of 3



INTERIOR COLOUR SCHEME

Purchaser: Anna Litvinova
Telephone Res. / Bus: (416) 897-2744 /
Decor Advisor: Steffannee Appio

Property: 96 of Plan -
Project: Teefy Developments Limited
Model and Elevation: Riverdale(22-3)

6. Trim Carpentry

Door Hardware

Interior Trim

Comment

Interior Doors

☐ 2 Panel Arch Top

☒ 2 Panel Square Top

☐ 6 Panel



Initial for Door Style A.L.

7. Railings and Pickets

Railing Package

Railing Colour Picket Colour

Wood Stairs ☐ No ☒ Oak Tread Colour

Comment

STAIN OAK STAIRS TO COMPLIMENT HARDWOOD STAIN - COBALT
UPGRADE 2A PICKETS

8. Plaster Mouldings and Medallions

Foyer	<input type="text"/>	<input type="text"/>	Kitchen/Breakfast	<input type="text"/>	<input type="text"/>
Main Hall	<input type="text"/>	<input type="text"/>	Den/Library	<input type="text"/>	<input type="text"/>
Living Room	<input type="text"/>	<input type="text"/>	Lower Landing	<input type="text"/>	<input type="text"/>
Dining Room	<input type="text"/>	<input type="text"/>		<input type="text"/>	<input type="text"/>
Family Room	<input type="text"/>	<input type="text"/>		<input type="text"/>	<input type="text"/>

Comment

9. Wall Paint

Smooth Ceilings ☐ First Floor
☐ First Floor incl. Second Floor Hall
☐ First and Second Floor
☒ Throughout
☐ Not Applicable

Trim Paint

10. Additional Comments

11. Disclaimers and Notes

- Colours of all materials are as close as possible to builder's selection, but not necessarily identical due to variances in manufacturing.
- Any extras listed above are null and void unless accompanied by a separate invoice/amendment. Said invoice must be paid in full.
- The Purchaser acknowledges that after Interior Colour Selection form is signed and dated, no further changes will be permitted other than re-selection due to unavailability. A.L. Purchaser's Initials
- The Purchaser acknowledges reading and accepting the "Senator Homes Décor Centre Disclaimers" form. This document contains other miscellaneous disclaimers.

This Interior Colour Selection is final and approved by:

Purchaser:

Signature: [Signature] Date: 1/02/15

Vendor: [Signature]
Teefy Developments Limited

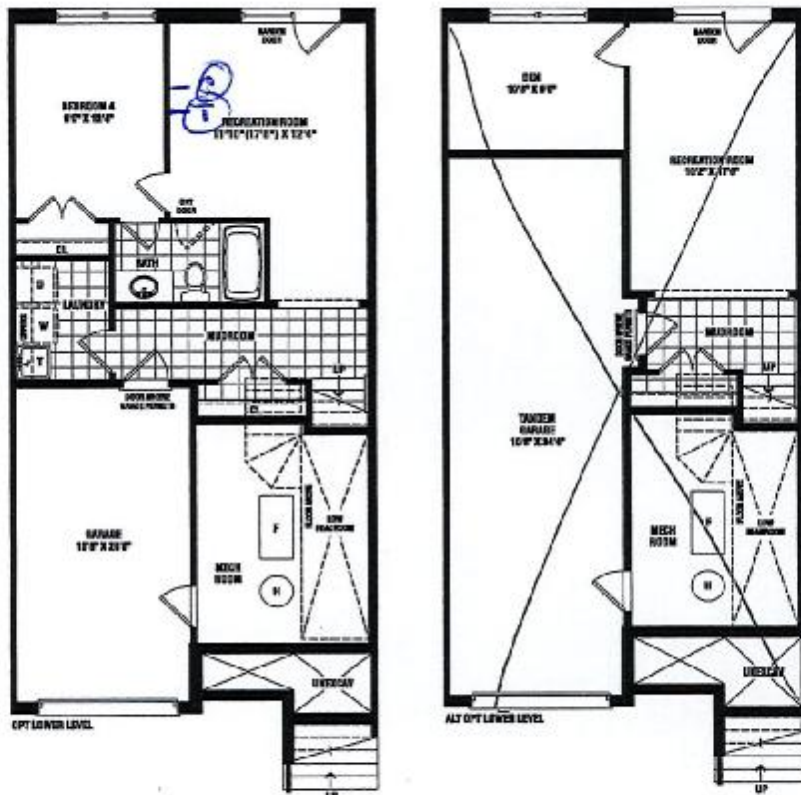
RIVERDALE

9130-hot 96
SENATOR HOMES
 DECOR CENTRE
 DATE: Nov 2/15
 INITIALS: A.d.r.

2454 SQ.FT. / 2288 SQ.FT. WITH OPTIONAL TANDEM GARAGE



① cable
 ① telephone
 ① electrical plug outlet



SENATOR
 HOMES

Renderings are artist's concept. Some elevations may vary from that shown. Actual useable square footage may vary from that stated herein. Some floorplans and elevations are mirror image to that shown. E&O.E. 22-3

A.d.r.

Teeby 96

FRIGIDAIRE



Front Load Washer

FFFW5000QW

7 Wash Cycles
4.5 Cu.Ft. I.E.C.



Optional SpaceWise® Pedestal Drawer Shown

Product Dimensions

Height	36"
Width	27"
Depth	30-9/16"

More Easy To Use Features

ENERGY STAR®-Qualified

Stain Clean Option

Delay Start

Begin your washing cycle at the time that works best with your schedule.

End-Of-Cycle Signal

Ready-Select® Controls

It's easy to get laundry started with just the touch of a button.

TimeWise® Technology

Wash time equals dry time — so you don't wait for clothes to dry.

SilentDesign™

Designed for quiet operation.

Stay-Fresh™ Antimicrobial Seal

Auto Options

Automatic Water Level Control

Optional Pedestal Drawer

Vibration Control System

Advanced vibration control keeps even oversized loads balanced for smooth, quiet operation. Ideal for second floor installation.

Add-a-Garment

With just the touch of a button, easily add an extra piece to the washer once a cycle has started.



ENERGY STAR®

Available in:



Classic
White
(W)

Signature Features

Advance Rinse Technology

Final rinse uses fresh water to ensure whiter whites and reduce allergens.

Stainless Steel Drum

Smooth, durable interior is rust-proof and won't snag clothes.

Large Capacity

Finish more in less time with our 4.5 cu.ft. I.E.C. capacity — the washer can fit two baskets of laundry in a single load.

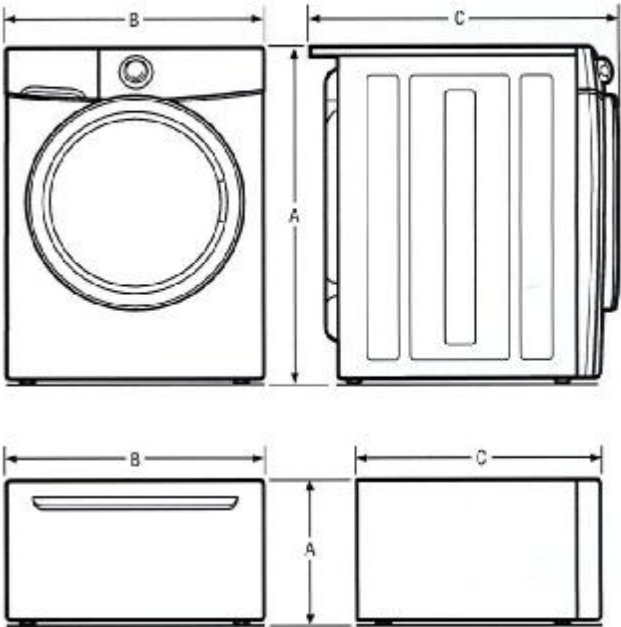
Tumble Action Cleaning System

By removing the agitator, you can count on the tumble action to wash gently and rinse completely, ensuring your clothes feel fresher and last longer.

frigidaire.ca

Features	
Total Capacity I.F.C. (Cu. Ft.)	4.5
Controls	Ready Select™
Washer Drum Interior	Stainless Steel
Lifetime Warranty Tub	Yes
Interior Light/Door Trim	No/White
Vibration Control System	Yes
Advanced Rinse Technology	Yes
TimeWise® Technology	Yes
Ready Clean™/Ready Steam™	
Fresh Water Rinse Option	Yes
Stay-Fresh™ Door Seal	Yes
Automatic Temperature Control	Yes
Automatic Water Level Adjustments	Yes
Auto Prewash Detergent Dispenser	
Auto Bleach Dispenser	Yes
Auto Detergent Dispenser	Yes
Auto Fabric Softener Dispenser	Yes
Time Remaining Indicator	Yes
Cycle Status Lights	Yes
Cycle Signal/Cycle Signal "On/Off"	Chime/Yes
Cycle Signal Volume Control	
Door Lock Indicator Light	Yes
Control Lock/Stay Put Door	Yes/Yes
Start/Pause/Cancel Buttons	Yes
Energy Saver Option	Yes
Delay Start	Up to 10 Hours
Integra® Water Heater	
Tumble Speed (RPM)	Variable
Spin Speed (Maximum RPM)	1200
Sound Package	SilentDesign™
Adjustable Leveling Legs	Yes
Cycles	
Wash Cycles/Specialty Cycles	7/0
Options	
Water Temperature Selections	5
Water Levels	Automatic/Max Fill
Spin Speed/Soil Level Selections	5/5
Allergen	
Optional Accessories	
Dryer Stacking Kit	PN# STACKIT4X
15" Frigidaire® Pedestal Drawers	
Classic White (W)	PN# CFPWD15W
Mobile Home Installation Kit	PN# 137067200
Drain Hose Extension Kit	PN# 137098000
Certifications	
ENERGY STAR®	Yes
NSF® Certified Sanitize/Allergen	
Specifications	
Power Supply Connection Location	Right Top Rear
Water Inlet Connection Location	Left Top Rear
Voltage Rating	120V/60Hz/15A
Connected Load (kW Rating) @ 120 Volts¹	11
Watts @ 120 Volts/Amps @ 120 Volts	1100/10
Minimum Circuit Required (Amps)	15
Shipping Weight (Approx.)	222 Lbs.

¹For use on adequately wired 120V, dedicated circuit having 2-wire service with a separate ground wire. Appliance must be grounded for safe operation.



NOTE: For planning purposes only. Always consult local and national electric and plumbing codes. Refer to Product Installation Guide for detailed installation instructions on the web at frigidaire.ca.



Product Dimensions	
A - Height (Single)	36"
Height (Stacked)	71-1/2"
B - Width	27"
C - Depth	30-9/16"
Depth with Door Open 90°	50-13/16"
Pedestal Dimensions	
A - Height	15-1/4"
B - Width	27"
C - Depth	26-1/2"
Depth with Drawer Fully Extended	42-1/2"

Accessories information available on the web at frigidaire.ca

FRIGIDAIRE

CANADA • 5855 Terry Fox Way • Mississauga, ON L5V 3E4 • 1-800-265-8352 • frigidaire.ca
FFFW5000Q 07/14

© 2014 Electrolux Major Appliances, NA

Specifications subject to change.
Printed in Canada

Telby 96

FRIGIDAIRE



Front Load Dryer

CFQE5000QW

6 Dry Cycles
7.0 Cu.Ft. I.E.C. Electric



Optional SpaceWise® Pedestal Drawer Shown

Product Dimensions

Height	36"
Width	27"
Depth	30-9/16"

More Easy To Use Features

Precision Dry™ Moisture Sensor
Dries even extra-large loads quickly and efficiently.

Timed Dry Cycles

Multiple Dryness Levels

Ready-Select® Controls
Easily select options with the touch of a button.

Auto Dry Cycles

Control Lock

Dryness Selections
Allow for better control over fabric care and the drying process. More Dry, Normal, Less Dry or Damp can be selected. More Dry is ideal for towels while Damp is perfect for items that will be ironed.

Available in:



Classic White (W)

Signature Features

Quick Dry

Dries even extra-large loads quickly and efficiently.

One-Touch™ Wrinkle Release

Prevents wrinkles, so your clothes look great every time. The Wrinkle Release System finishes by tumbling without heat.

Large Dryer Capacity

Finish more laundry in less time with our 7.0 cu.ft. I.E.C. dryer capacity.

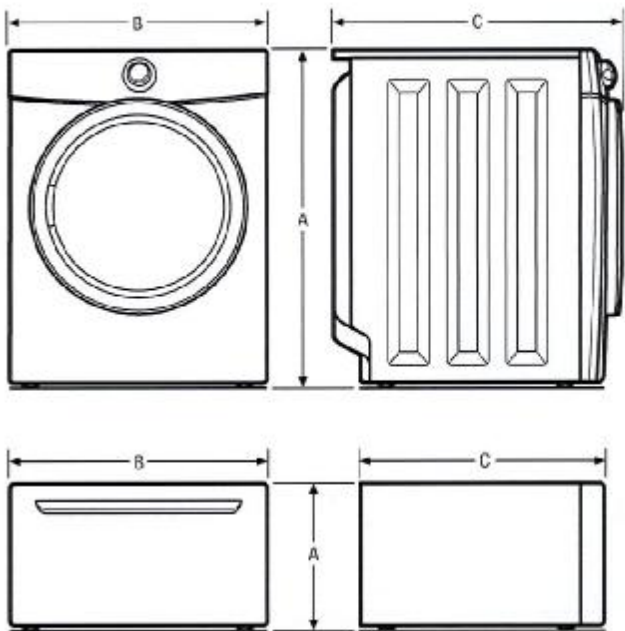
Reversible Door

Dries clothes more evenly for better results.

frigidaire.ca

Features	
Total Capacity I.E.C. (Cu. Ft.)	7.0
Controls	Ready-Select*
Dryer Drum Interior	Painted Steel
Interior Light	Yes
Door Trim	White
Ready Steam™	
DrySense™ Technology	Yes
Wrinkle Release Technology	Yes
TimeWise® Technology	Yes
Precision Moisture Sensor	Yes
Time Remaining Indicator	Yes
Cycle Status Lights	Yes
Cycle Signal	Chime
Cycle Signal "On/Off"	Yes
Cycle Signal Volume Control	
Control Lock	Yes
Start/Pause/Cancel Buttons	Yes
Energy Saver Option	
Delay Start	
Tumble Speed (RPM)	50
Reversible Door	Yes
Lint Screen	Yes
Sound Package	SilentDesign™
Adjustable Leveling Legs	Yes
Cycles	
Dry Cycles	6
Specialty Cycles	0
Options	
Temperature Selections	5
Dryness Level Selections	4
Timed Dry	30, 60, 90
Optional Accessories	
Dryer Stacking Kit	PN# STACK14X
15" Frigidaire® Pedestal Drawers	
Classic White (W)	PN# CFPWD15W
Mobile Home Installation Kit	PN# 137067200
Drying Rack	PN# 137067300
Certifications	
NSF® Certified Sanitize	
Specifications	
Maximum Exhaust Duct Length¹ (ft.)	64
Power Supply Connection Location	Right Bottom Rear
Voltage Rating	240V / 60Hz / 30A
Connected Load (kW Rating) @ 240 Volts	5.4
Amps @ 240 Volts	24
Heating Element @ 240 Volts (Watts)	4,700
Shipping Weight (Approx.)	160 Lbs

¹Rigid metal duct preferred, semi-rigid optional and allow deductions for elbows and vents. Refer to Installation Guide on web for additional information



NOTE: For planning purposes only. Always consult local and national electric and plumbing codes. Refer to Product Installation Guide for detailed installation instructions on the web at frigidaire.ca.



Product Dimensions	
A - Height (Single)	36"
Height (Stacked)	71-1/2"
B - Width	27"
C - Depth	30-9/16"
Depth with Door Open 90°	51-7/16"
Pedestal Dimensions	
A - Height	15-1/4"
B - Width	27"
C - Depth	26-1/2"
Depth with Drawer Fully Extended	42-1/2"

Accessories information available on the web at frigidaire.ca

Treeby 96
Dec 9/15

The **BRICK**
CUSTOMER
LOT#96 ANNA LITVINOVA

4250 DUFFERIN ROAD, TORONTO, ON, M3H 5W4, 877-353-2850

SALES ORDER INFORMATION

DOCUMENT NUMBER

TYPE: SALES ORDER/INVOICE
DEL/PU: D
ZONE: 42A
DAY: TBA
DATE: TBA
SERV.

120354ZJSEG
ZZSEN-BATH
SALESPERSON(S)
ALVIN H



B

DELIVERY/PICKUP DATE WILL BE CONFIRMED AND SCHEDULED UPON ARRIVAL OF PRODUCT FROM SUPPLIERS..

SPECIAL ORDER AGREEMENT	QTY	ITEM CODE		DESCRIPTION	EXT'D PRICE
The items indicated with an * beside QTY on your order have been purchased with the understanding that these items will be specifically ordered for you. Special order items will be ordered only when full payment of the invoice has been received. You will be contacted when your purchase arrives and items must be delivered or picked up within 7 days of arrival.	* 1	EI23BC30K	0948	D-23 CF F/D FRIDGE - SS	\$ 2699.00
	* 1	EI24CD35	0622	INTERGRATED DISHWASHER	\$ 800.00
	* 1	EI30BM6CP	0948	D-OTR MICRO - SS	\$ 658.00
	1	FFFW5000W	0822	FRONT LOAD WASHER	\$ 688.00
	1	CFQE5000W	0822	FRONT LOAD ELECTRIC DRYER	\$ 688.00
	1	DRYVENT	0295	VENT KIT	\$.00
	1	2MC4E	0295	4" CLAMP/2PK	\$ 1.95
	1	TD48	0295	DRYER VENT KIT	\$ 23.02
	1	82124787	0132	DLX FILL HOSES	\$ 20.00
	1	STACKIT4X	0822	STACK KIT	\$ 15.00
	* 1	EI30GF45	0948	D-F/S RANGE - SS	\$ 2499.00

Please initial below indicating that you have read and acknowledged the terms and conditions as stated.

Buyers Initial _____

DELIVERY INSTRUCTIONS

total upgrade \$2257+tax (\$2550.41)
revised upgrade \$2632.91 Dec 5 2015

SEE	MERCH SUBT. \$	8291.97
REVERSE FOR	DELIVERY \$	69.99
MORE	TAXABLE TOTAL \$	8361.96
INFORMATION	GST/HST \$	1087.05 *
YOU SHOULD	PST \$.00 *
KNOW!	TOTAL \$	9449.01
	DEPOSIT \$	2832.91
	BALANCE DUE \$	6616.10

TRAN TYPE	AMOUNT	ACCT.	ACCOUNT NUMBER	MERCHANT #	FIN CODE	APPROVAL	DATE/TIME
PURCHASE/ACHA	2550.41	CDN VISA	*****9099	714305	C	007562	03-DEC-2015 14:01:20
ACHA/ACHA		Card Type CREDIT	A.D. 4000000000000000	SEC005	BATCH: 001	00/001 APPROVED - THANK YOU	CA1 Verified by Pin
TFI+MAILTEL+PO	282.50	CDN VISA	*****9099	714305	M	075651	05-DEC-2015 11:33:43
		Card Type CREDIT		SEC004	BATCH: 001	00/001 APPROVED - THANK YOU	Pin

Thank You For Shopping At The **BRICK**
www.thebrick.com

* Taxes and Surcharges are subject to change.

CUSTOMER SERVICE INQUIRIES
For Customer Service call:
7 days per week
877-353-2850
For Appliance and Electronic Repairs call:
(800)360-2742
MONDAY TO SATURDAY

IMPORTANT
Retain this copy for your records

Please Note recent changes to our price guarantee is not reflected on this document. Please see in store or online at thebrick.com for full details.

Please Visit www.thebrick.com or call us at 1(866) 508-7766 to obtain our Privacy Policy.

CREDIT CARD TRANSACTION: Cardholder will pay card issuer above amount pursuant to Cardholder Agreement.

PAYMENT OPTIONS
☐ STANDARD REVOLVING
☐ EQUAL MONTHLY PAYMENTS PROMOTIONAL OFFER
☐ MONTHS NO INTEREST NO PAYMENT PROMOTIONAL OFFER

DATE: 03-DEC-2015 14:01:30

BUYER SIGNATURE(S) _____

TRANS GLOBAL WARRANTY CORPORATION'S FULL CIRCLE PROTECTION PLAN EXPLAINED AND ☐ ACCEPTED ☐ DECLINED Customer Initial _____
GST/HST Registration Number: 3N85412304RT PST Registration Number: ACCOUNTING / CUSTOMER COPY