

Teefy 109

## Product overview

### Electrolux ICON® French Door Refrigerator

E23BC78IPS

Stainless Steel



- Custom Temp Drawer™
- Custom-Design™ Organization System
- Theatre Lighting
- PureAdvantage® Filtration Systems



## Features

### Custom Temp Drawer™

Enjoy the ultimate in versatility with 9 preset selections including White/Sparkling Wine, Fish/Shellfish, Cheese plus three customizable settings that ensure foods stay at the ideal temperature for serving and maintaining freshness.

### Theatre Lighting

Transition LED lighting gradually illuminates the interior with soft but ample light as you open the door.

### Custom-Design™ Organization System

With our flexible Tri-Level freezer organization system you can keep your freezer well organized. The three Smooth-Glide® baskets with removable dividers and top removable baskets allow you to configure the space to neatly fit large and small items.

### PureAdvantage® Filtration Systems

Our filtration system keeps clean, filtered air circulated throughout to prevent odour transfer and keeps fresh, clean water and ice at your fingertips.

## Product Specifications

### Capacities

**Freezer Capacity (Cu. Ft.):** 6.86 cubic feet

**Freezer Shelf Area (Sq. Ft.):** 7.72 square foot

**Fresh-food Capacity (Cu. Ft.):** 15.68 cubic feet

**Fresh Food Shelf Area (Sq. Ft.):** 18.71 square foot

**Capacity (Cu. Ft.):** 22.5 cubic feet

**Total Shelf Area (Sq. Ft.):** 26.43 square foot

### Certifications & Approvals

CSA Certified: Yes  
ENERGY STAR® Certified: No  
Sabbath Mode (Star-K® Certified): Yes

Teefy 09

## Fresh Food

Air Filter Location: Left Fresh Food Door  
Air Filter: PureAdvantage®  
Door Ajar Alert: Yes  
Temperature Alert: Yes  
Power Failure Alert: Yes  
Crispers: 2 Smooth-Glide®  
Dairy Compartment: Clear Locking  
Half-Gallon Door Bins: 1 Clear (Adjustable)  
Tilt-Out Door Bins: 2 Clear (1 per door)  
Meat / Deli Drawer: Custom Temp Drawer™  
Drawer Trims: Yes  
Drawer Trim Color: White & Silver  
Energy Saver Plus: Yes  
Humidity Controls: 2  
Lighting Levels: Dual-Level  
Luxury-Design® Ramp-Up Multilevel Lighting: Theatre Ramp-Up LED  
Cantilever Shelves: Yes  
Custom-Design™ Shelves: 3 Half-Width 1 Quarter-Width  
Water Filter Location: Bottom/Left Fresh Food Section  
Water Filter: PureAdvantage®

## Controls

Control Location: Dispenser  
Controls: Wave-Touch®  
Air Filter Indicator / Reset: Yes  
Supplemental Freeze: Fast Freeze™  
System On/Off Control: Yes  
Water Filter Indicator / Reset: Yes

## General Specifications

Condenser Type: Dynamic  
Water Inlet Location: Left Rear Bottom  
Sound Package: Luxury-Quiet™  
Shipping Weight (lbs): 341 pound

## Freezer Specifications

Lower Adjustable Basket Dividers: Yes  
Middle Adjustable Basket Dividers: Yes  
Upper Adjustable Basket Dividers: Yes  
Lower Basket Construction: Wire grey powder-coated  
Middle Basket Construction: Wire grey powder-coated  
Upper Basket Construction: Wire grey powder-coated  
Lower Basket Design: Smooth-Glide® Full-Width  
Middle Basket Design: Full-Width Smooth-Glide®  
Upper Basket Design: Full-Width Smooth-Glide®



# GAS FREESTANDING RANGE

EI30GF45QS

Featuring IQ-Touch™ Electronic Controls

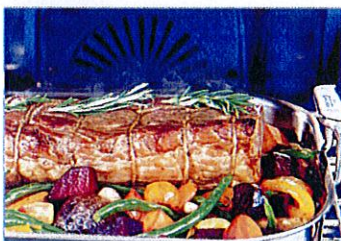


## SIGNATURE FEATURES



### FRONT CONTROL DESIGN

Effortlessly upgrade your back-control range to built-in style. This range will easily replace traditional 30" freestanding ranges.



### PERFECT TASTE™ CONVECTION

For consistently delicious taste and texture, home chefs rely on our convection heat, which circulates air evenly for better baking.



### OVAL BURNER + INCLUDED GRIDDLE

Allows you to cook with larger pots and pans or use the complementary griddle to achieve a variety of perfect flavors!



### PERFECT TASTE™ TEMP PROBE

The Perfect Taste™ Temp Probe lets you cook each dish to perfection. It does more than measure temperature — it alerts you when food has reached the desired temperature and automatically adjusts to the Keep Warm setting, so you never overcook your food and deliver perfect results every time.

## PRODUCT DIMENSIONS

Height	36-1/8" - 36-5/8"
Width	29-7/8"
Depth (including handle)	28-5/16"

## MORE EASY-TO-USE FEATURES

### MIN-2-MAX® GAS BURNER

Designed with a dual-flame sealed burner, this cooktop provides exceptional power and precision to unlock new flavors.

### A LUXURY-GLIDE® OVEN RACK

With a ball bearing system, the oven rack is so smooth it extends effortlessly so you can more easily manage the transfer of all dishes, even heavy ones.

### CONTINUOUS GAS GRATES

Designed for cooking multiple dishes at a time, these grates allow easy movement of even the heaviest pots and pans from burner to burner — without lifting. Plus, they create a streamlined look.

### DEEP-WELL DESIGN

Keeps spills contained for easy cleanup.

### WARMER DRAWER

Maintain the perfect temperature of your food until serving time.

### PLATINUM STAR® LIMITED WARRANTY

Our exclusive limited warranty that includes 3-year coverage on parts and one year on labor\*.

### CONVECTION CONVERSION

Automatically adjusts standard baking temperatures to convection temperatures, for perfect, consistent results.

### 6 COOKING MODES

Bake, Broil, Convection Bake, Convection Roast, Keep Warm and Slow Cook.

### KEEP WARM SETTING

Maintain food at the perfect serving temperature with this setting — it's a great feature when you're entertaining.

Available in:



Stainless  
(S)

BURNER	BTU
Min-2-Max® Dual Flame Sealed Burner	750 - 18,000
Sealed Power Burner	14,200
Sealed Precision Burner	9,500
Sealed Precision Burner	5,000
Centra Burner	10,000

\*For best results, use large cookware on your power burner.

†Eligibility based on product registration with Electrolux North America within 60 days of purchase. Products must have been purchased on or after July 1, 2013. Coverage includes material parts for 3 years and labor for 1 year.



# GAS FREESTANDING RANGE

EI30GF45QS



Trefy 109

## 30" GAS FREESTANDING RANGE

### CONTROL PANEL FEATURES

IQ-Touch™ Electronic Oven Control	Yes
Professional-Grade Burner Controls	Yes
Glass Front Display	Yes
Electronic Clock & Timer	Yes
Temperature Display	Yes
Automatic Oven (Delay, Cook & Off)	Yes

### COOKTOP FEATURES

Sealed Power Burner – 18,000 BTU	1
Sealed Power Burner – 14,200 BTU	1
Sealed Precision Burner – 9,500 BTU	1
Sealed Precision Burner – 5,000 BTU	1
Centre Oval Burner – 10,000 BTU	1
Continuous Grates with Deep-Well Top	Yes
Seamless Cooktop	Yes
Electric Pilotless Ignition	Yes

### OVEN FEATURES

Capacity	4.5 Cu. Ft.
Hidden Bake Burner	
Bake Burner – 18,000 BTU	Yes
Broil Burner – 13,500 BTU	Yes
Convection Burner – 350 Watts	Yes
Cobalt Blue Interior	Yes
Self-Clean Options with Door Lock	Yes
Perfect Taste™ Convection	Yes
Cooking Modes – Bake, Broil, Convection Bake, Convection Roast, Keep Warm, Slow Cook	6
Baking Options – Temperature Probe, Delay Bake, Convection Convert	3
Oven Light	Yes
Luxury-Glide® Racks	1
Conventional Racks	1
Convection Roasting Rack	1

### ADDITIONAL FEATURES

Luxury-Hold™ Oven Door	
Extra-Large Glass Window	Yes
Warmer Drawer	Yes
Adjustable Leveling Legs	Yes
Sabbath Mode (Star-K® Certified)	Yes

### ACCESSORIES

Griddle – PN # 318251608	Included
LP Gas Conversion Kit	Included
Meat Probe	Included
Stainless Steel Backguard – PN # A02535501	Optional

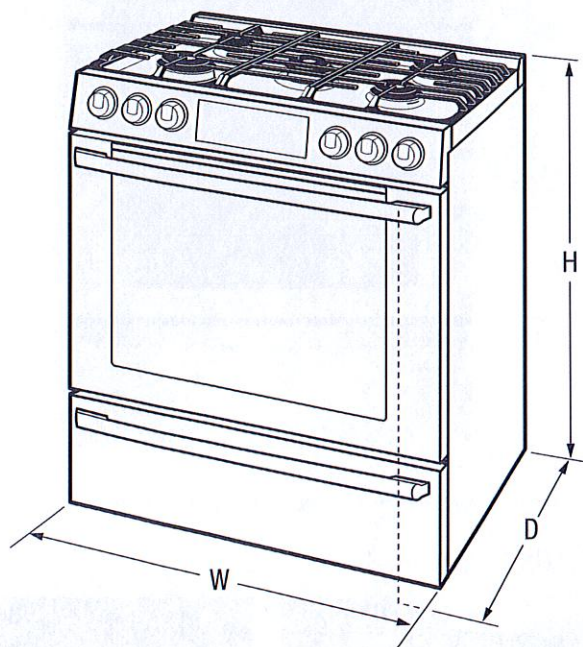
### SPECIFICATIONS

Colour –	
Stainless Steel	S
Gas Inlet/Power Cord Location	Right Bottom Rear
Voltage Rating	120V 60Hz 15A
Connected Load (kW Rating) @ 120 Volts <sup>1</sup>	1.80
Amps @ 120 Volts	15
Shipping Weight (Approx.)	285 Lbs.

<sup>1</sup>For use on adequately wired 120V, dedicated circuit having 2-wire service with a separate ground wire. Appliance must be grounded for safe operation.

NOTE: Always consult local and national electric and gas codes. Refer to Product Installation Guide for detailed installation instructions on the web at [electroluxappliances.ca](http://electroluxappliances.ca).

Specifications subject to change.



### PRODUCT DIMENSIONS

Height (Adjustable)	36-1/8" - 36-5/8"
Width	29-7/8"
Depth (including handle) (with 90° Door Open)	28-5/16" 46"

### OVEN CAVITY DIMENSIONS

Height	17-1/2"
Width	24-1/8"
Depth	18-3/4"

Electrolux Major Appliances, N.A.

CANADA • 5855 Terry Fox Way • Mississauga, ON L5V 3E4 • 1-800-265-8352 • [electroluxappliances.ca](http://electroluxappliances.ca)

EI30GF45Q 10/15

© 2015 Electrolux Major Appliances, NA



High standards of quality at Electrolux Home Products, Inc. mean we are constantly working to improve our products. We reserve the right to change specifications or discontinue models without notice.

Printed in Canada