



CONSTRUCTION SUMMARY

North 88 Developments Inc. / North 88

Lot/Unit: 39 Block 5    Phase/Building: 1    Model/Floor Plan: Orchid-Elev B

CABINETRY

Inv.3397	1 - KITCHEN - CABINETRY - DENOVA ANNEX DHGL	
Line 43602	Note:	
27Nov15 / 7Mar16		

CABINETRY ACCESSORIES

Inv.3397	1 - DIFFERENT COLOUR ISLAND AND BASE CABINETS	
	-FRIDGE AND BUILT-IN TO BE SAME COLOUR AS UPPERS	
Line 46229	Note:	
27Nov15 / 7Mar16		

CABINETRY APPLIANCE - FRIDGE

Inv.3397	1 - KITCHEN - 59 CM FRIDGE CABINET - 1 GABLE & CABINET	
Line 44177	Note:	
27Nov15 / 7Mar16		

CABINETRY BASE CABINETS

Inv.3397	1 - RELOCATE STANDARD BANK OF DRAWERS AS INDICATED ON SKETCH	
Line 46225	Note:	
27Nov15 / 7Mar16		
Inv.3397	1 - BASE PIE CUT CORNER - UPGRADE 2	
Line 44186	Note:	
27Nov15 / 7Mar16		
Inv.3397	2 - LONG TOP DRAWER PRICE PER DRAWER AND DUMMY DRAWER FRONTS - UPGRADE 2	
Line 46230	Note:	
27Nov15 / 7Mar16		

CABINETRY HARDWARE

Inv.3397	1 - BASE WASTE / RECYCLE CENTER PULL OUT DOOR - ONLY AVAILABLE IN 45 CM CABINET (2) 35L BINS - PRICE IS PER UNIT	
Line 44178	Note:	
27Nov15 / 7Mar16		

CABINETRY HOOD FANS

Inv.3397	1 - ACCOMMODATE FOR CHIMNEY STYLE HOOD FAN	
	- PURCHASER HAS OPT'D TO NOT ADD A DEDICATED OUTLET	
Line 44180	Note:	
27Nov15 / 7Mar16		

CABINETRY MICROWAVE OVEN STOVE COOKTOP

Inv.3397	1 - BUILT IN 30' MICRO SPEED OVER WITH BUILT-IN 30' OVEN CABINET BELOW WITH BASE POT DRAWER - TRIM KIT REQUIRED - PURCHASER HAS SUPPLIED SPECS - UPGRADE 2	
Line 44181	Note:	
27Nov15 / 7Mar16		



CONSTRUCTION SUMMARY

North 88 Developments Inc. / North 88

Lot/Unit: 39 Block 5    Phase/Building: 1    Model/Floor Plan: Orchid-Elev B

Inv.3397	1 - COOKTOP CABINET (FULL HEIGHT) WITH FALSE TOP DRAWER AND POT & PANS DRAWERS BELOW - PURCHASER MUST SUPPLY SPECS - UPGRADE 2	
Line 44182	Note:	
27Nov15 / 7Mar16		

CABINETRY VANITY

Inv.3397	1 - MASTER ENSUITE - VANITY BANK OF DRAWERS	
Line 44173	Note:	
27Nov15 / 7Mar16		

CABINETRY WALL AND HUTCH

Inv.3397	1 - UPPER ANGLE CORNER - PRICE IS PER UNIT - UPGRADE 2	
Line 44185	Note:	
27Nov15 / 7Mar16		

COUNTER TOP - EXTRAS

Inv.3397	1 - SUPPLY AND INSTALL GRANITE CUTOUT PROVISION FOR COOKTOP CONDITION	
Line 45846	Note:	
27Nov15 / 7Mar16		

COUNTER TOP - KITCHEN

Inv.3397	1 - SUPPLY AND INSTALL 3CM STONE COUNTER TOP WITH STANDARD SQUARE EDGE – GROUP 3 IN THE KITCHEN WITH ISLAND & FLUSH BREAKFAST BAR	
Line 43614	Note:	
27Nov15 / 7Mar16		

ELECTRICAL

Inv.3397	1 - SUPPLY AND INSTALL ADDITIONAL INTERIOR SINGLE POLE SWITCH	
	- IN KITCHEN FOR POTLIGHTS	
Line 46234	Note:	
27Nov15 / 7Mar16		
Inv.3397	1 - RELOCATE STANDARD CEILING LIGHT FROM KITCHEN AND BREAKFAST ABOVE ISLAND	
	- BOTH ON EXISTING KITCHEN SWITCH	
	- LIVING ROOM SWITCH TO REMAIN FOR POTLIGHTS	
Line 46235	Note:	
27Nov15 / 7Mar16		
Inv.3397	1 - ELECTRICAL - CONNECTION FOR BUILT-IN OVEN	
	- RELOCATED FOR BUILT-IN OVEN	
Line 44187	Note:	
27Nov15 / 7Mar16		
Inv.3397	1 - ELECTRICAL - CONNECTION OF COOK TOP UNIT	
Line 44183	Note:	
27Nov15 / 7Mar16		
Inv.3397	1 - ELECTRICAL - CONNECTION FOR BUILT-IN SPEED OVEN - 120V	
Line 45847	Note:	
27Nov15 / 7Mar16		



CONSTRUCTION SUMMARY

North 88 Developments Inc. / North 88

Lot/Unit: 39 Block 5    Phase/Building: 1    Model/Floor Plan: Orchid-Elev B

Inv.3397	1 - SUPPLY AND INSTALL ADDITIONAL INTERIOR RECEPTACLE (NOT SEPARATE CIRCUIT)	
Line 46560	- ON WALL APPROX 5' 6" FROM THE FLOOR FOR FUTURE WALL MOUNT T.V	
	Note:	
27Nov15 / 7Mar16		

Inv.3397	1 - SUPPLY AND INSTALL RECESSED INTERIOR RECEPTACLE IN LIEU OF THE STANDARD AT FRIDGE LOCATION AS REQUIRED BY APPLIANCE SPECS.	
Line 46561		
	Note:	
27Nov15 / 7Mar16		

HARDWOOD

Inv.3397	1 - SUPPLY AND INSTALL HARDWOOD - UPGRADE 4 - VINTAGE - SOLID SAWN - WHITE OAK 5 INCH X 3/4 INCH - HAND - - KITCHEN	
Line 43627		
	Note:	
27Nov15 / 7Mar16		

Inv.3397	1 - SUPPLY AND INSTALL HARDWOOD - UPGRADE 4 - VINTAGE - SOLID SAWN - WHITE OAK 5 INCH X 3/4 INCH - HAND - - LIVING ROOM / DINING ROOM	
Line 43617		
	Note:	
27Nov15 / 7Mar16		

Inv.3397	2 - SUPPLY AND INSTALL HARDWOOD - UPGRADE 4 - VINTAGE - SOLID SAWN - WHITE OAK 5 INCH X 3/4 INCH - HAND - - LANDINGS	
Line 43618		
	Note:	
27Nov15 / 7Mar16		

Inv.3397	1 - SUPPLY AND INSTALL HARDWOOD - UPGRADE 4 - VINTAGE - SOLID SAWN - WHITE OAK 5 INCH X 3/4 INCH - HAND - - HALL - 2ND FLOOR HALL	
Line 43619		
	Note:	
27Nov15 / 7Mar16		

Inv.3397	1 - SUPPLY AND INSTALL HARDWOOD - UPGRADE 4 - VINTAGE - SOLID SAWN - WHITE OAK 5 INCH X 3/4 INCH - HAND - - BREAKFAST	
Line 43621		
	Note:	
27Nov15 / 7Mar16		

HEATING AND AIR CONDITIONING

Inv.3397	1 - GAS LINE - ROUGH-IN ONLY - FIRST CONNECTION- FOR BBQ	
Line 43647		
	Note:	
27Nov15 / 7Mar16		

MISCELLANEOUS

Inv.3593	1 - ALT bedroom LOWER LEVEL/ ALT bedroom 2ND FLOOR	
Line 47256		
	Note:	
6Apr16 / 6Apr16		

PAINT AND DRYWALL

Inv.3397	2 - SUPPLY AND INSTALL SMOOTH CEILING - PRICE PER FLOOR	
Line 46228		
	Note:	
27Nov15 / 7Mar16		

PLUMBING



CONSTRUCTION SUMMARY

North 88 Developments Inc. / North 88

Lot/Unit: 39 Block 5    Phase/Building: 1    Model/Floor Plan: Orchid-Elev B

Inv.3397	1 - SUPPLY AND INSTALL WATERLINE ROUGH-IN TO THE FRIDGE LOCATION (NO HOOK UP)	
Line 44174	Note: LOCATION AS PER SKETCH ATTACHED.	
27Nov15 / 7Mar16		

TILE - FLOOR

Inv.3397	1 - SUPPLY AND INSTALL FLOOR TILE - UPGRADE 3 - - VESTIBULE FLOOR - ON CONC.	
Line 43636	Note:	
27Nov15 / 7Mar16		
Inv.3397	1 - SUPPLY AND INSTALL FLOOR TILE - UPGRADE 1 - - POWDER ROOM - FLOOR	
Line 43631	Note:	
27Nov15 / 7Mar16		
Inv.3397	1 - SUPPLY AND INSTALL FLOOR TILE - UPGRADE 1 - - MAIN BATHROOM - FLOOR	
Line 46226	Note:	
27Nov15 / 7Mar16		
Inv.3397	1 - SUPPLY AND INSTALL FLOOR TILE - UPGRADE 5 - - ENSUITE BATHROOM - FLOOR	
Line 46232	Note:	
27Nov15 / 7Mar16		

TILE - WALL

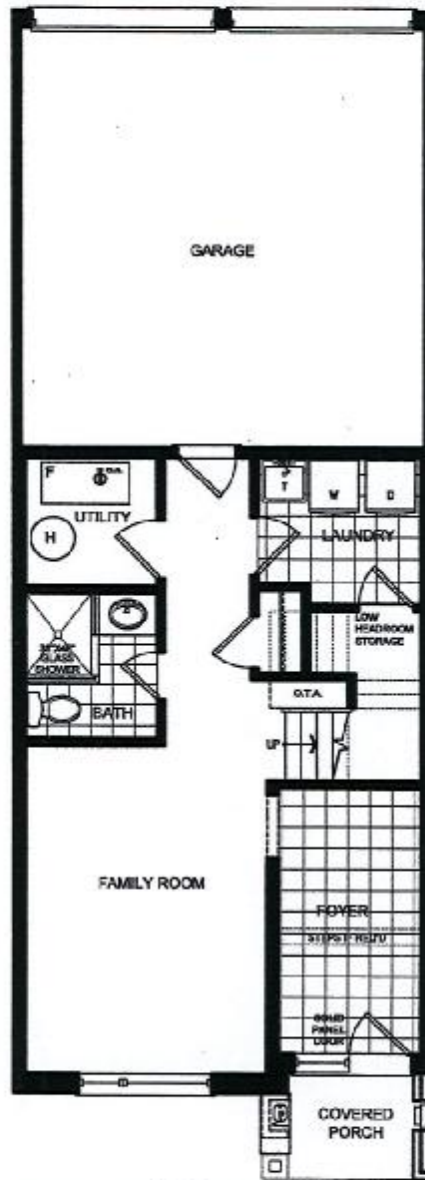
Inv.3397	1 - DELETE BATHROOM ACCESSORIES THROUGHOUT -PURCHASER IS AWARE NONE WILL BE SUPPLIED AND NO CREDIT WILL BE GIVEN	
Line 44077	Note:	
27Nov15 / 7Mar16		

EXTRAS AS PER OFFER

Note:	1) 5 builder appliances - supply only 2) Bell Fibe free service package - 6 months	
-------	---	--

n88-39

ORCHID  
TH2003



SMOOTH  
CEILING

~~LOWER FLOOR ELEV 'B'~~



© CABLE  
① TELEPHONE  
● POTUSKTS.

PURCHASER HAS  
OPT'D TO  
VISIT G. ALARMS

SENATOR HOMES  
DECOR CENTRE

DATE: FEB 16 2016

INITIALS: K.C.

PARTIAL ALT. BEDROOM  
LOWER FLOOR ELEV 'B'

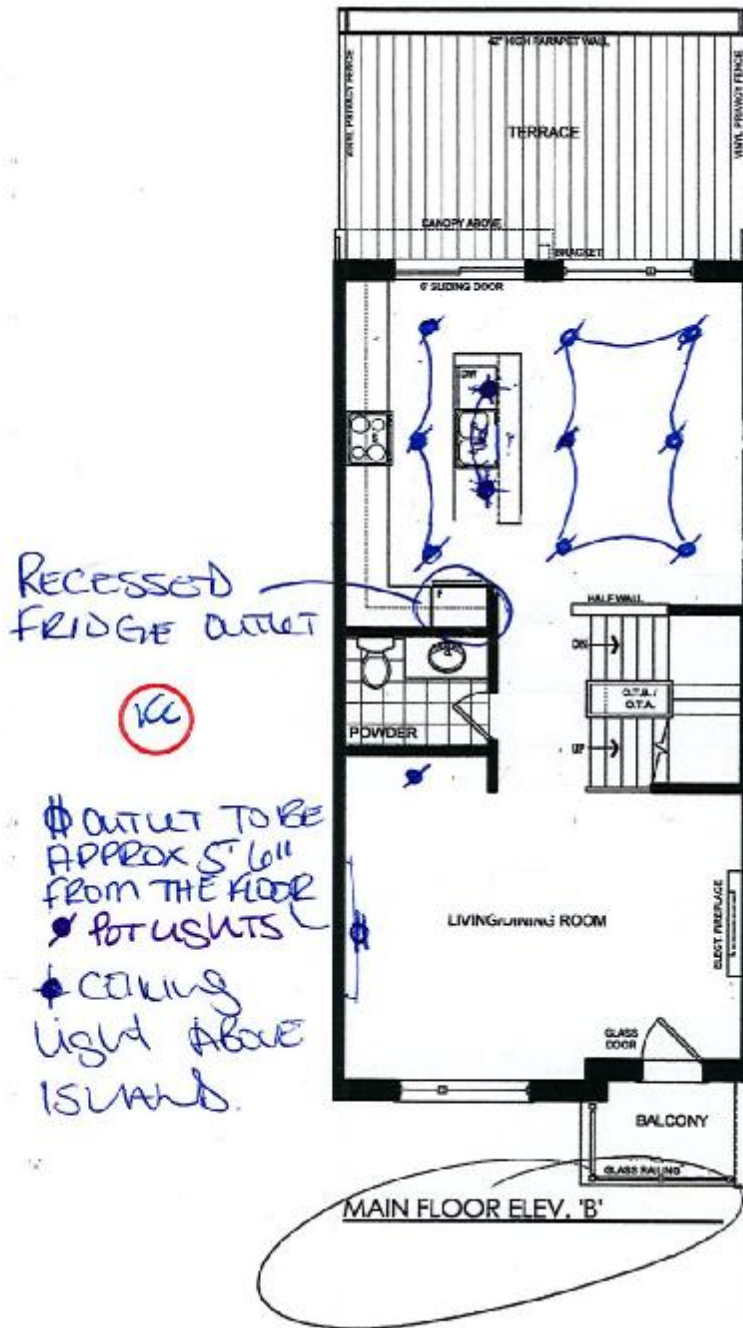
K.C.

Lot 39  
Feb 25/2015

This plan is not to scale and subject to architectural review and revision, including without limitation, the Unit being constructed with a layout that is the reverse of that set out above. All drawings, floorplans, materials, specifications, details and dimensions, if any, are approximate and subject to change without notice. Bulkheads are not shown on this plan and may be located in areas of the Unit. Terraces, balconies and patios, if any, are exclusive use common elements, shown for display purposes only and location and size are subject to change without notice. Number of steps, window location, size and type may vary without notice. - March 13, 2014.

188-39

# ORCHID TH2003



SENATOR HOMES  
DECOR CENTRE

DATE: FEB 16 2016  
INITIALS: KC

Lot 39

Feb 25, 2015

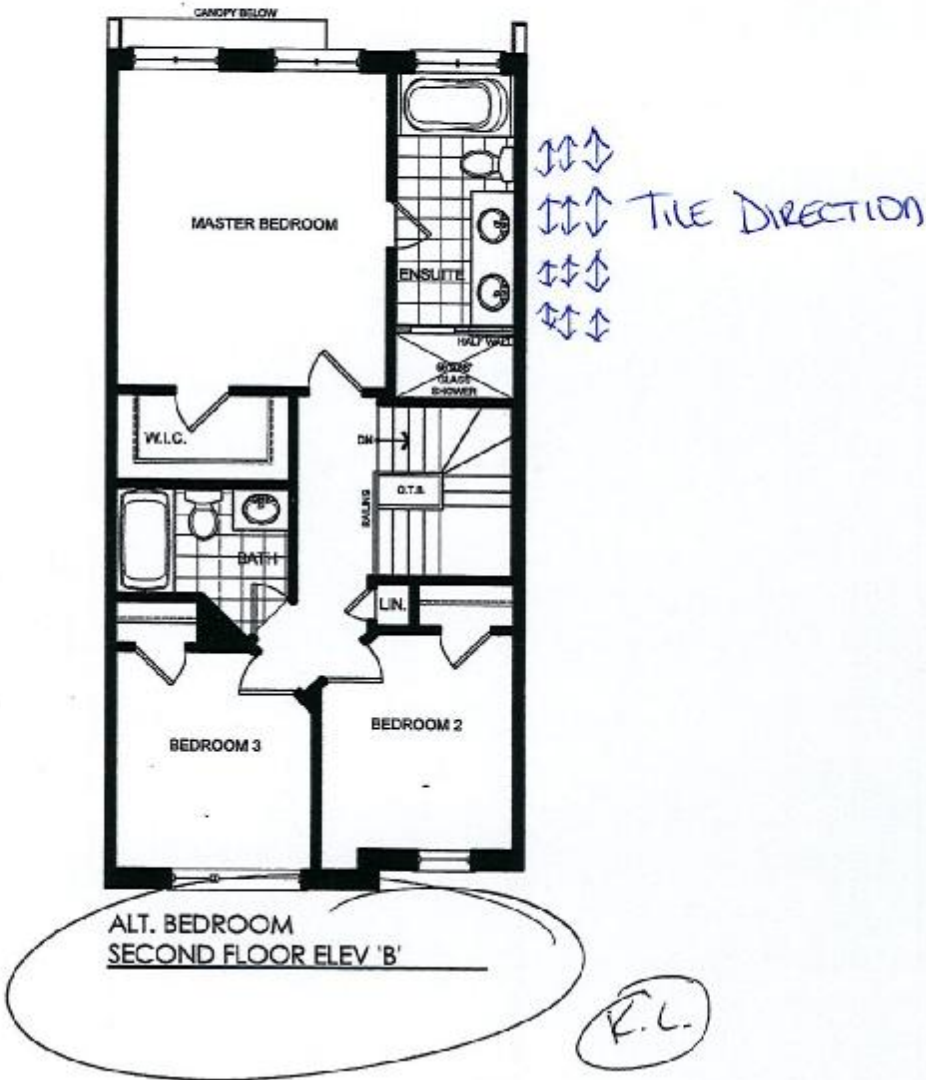
This plan is not to scale and subject to architectural review and revision, including without limitation, the Unit being constructed with a layout that is the reverse of that set out above. All drawings, floorplans, materials, specifications, details and dimensions, if any, are approximate and subject to change without notice. Bulkheads are not shown on this plan and may be located in areas of the Unit. Terraces, balconies and patios, if any, are exclusive use common elements, shown for display purposes only and location and size are subject to change without notice. Number of steps, window location, size and type may vary without notice. - March 13, 2014.



188-39

ORCHID  
TH2003

SMOOTH  
CEILING.



SENATOR HOMES  
DECOR CENTRE

DATE: FEB 16 2016  
INITIALS: KC.

Lot 39

Feb 25/ 2015

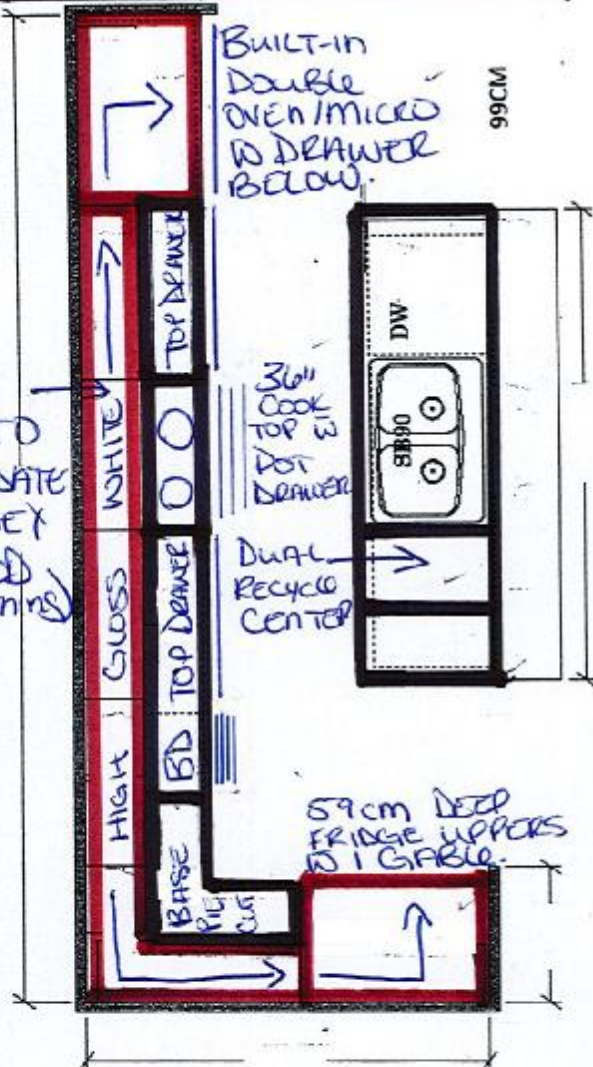
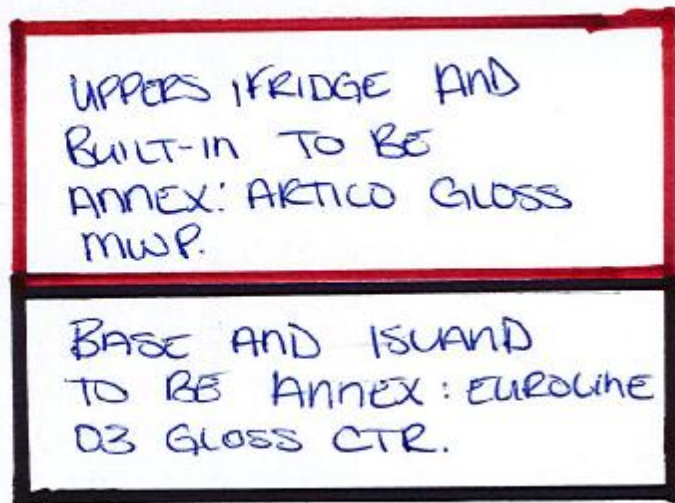
This plan is not to scale and subject to architectural review and revision, including without limitation, the Unit being constructed with a layout that is the reverse of that set out above. All drawings, floorplans, materials, specifications, details and dimensions, if any, are approximate and subject to change without notice. Bulkheads are not shown on this plan and may be located in areas of the Unit. Terraces, balconies and patios, if any, are exclusive use common elements, shown for display purposes only and location and size are subject to change without notice. Number of steps, window location, size and type may vary without notice. - March 13, 2014.

# ORCHID - TH2003

## STD LAYOUT

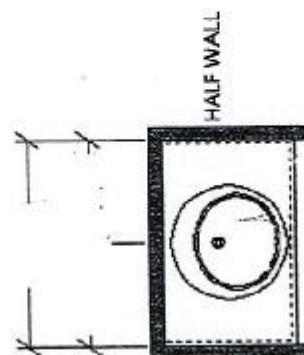
DELETE  
UPPERS TO  
ACCOMMODATE  
FOR CHIMNEY  
STYLE HOOD  
(36" OPENING)

STANDARD FIRST/SECOND/THIRD FLOOR - ELEV B

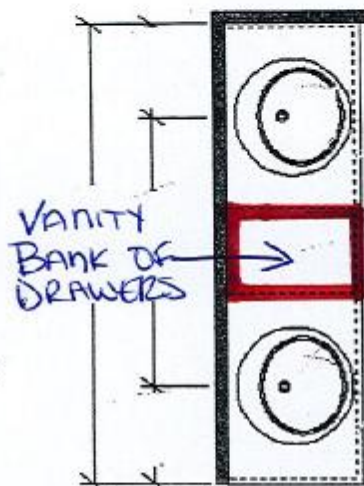


OPT. CROWN (X3)  
OPT. LIGHT VALANCE (X3)

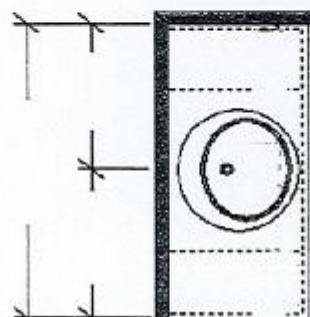
KITCHEN (FIRST FL) - EL: B



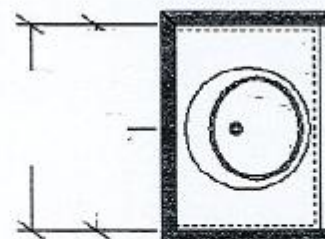
BATH (SECOND FL) - EL: A (INT. END), B, C, D



MASTER ENS (SECOND FL) - EL: A (INT. END), B  
ALT. BDRM MASTER ENS (SECOND FL) - EL: A (INT. END) B



POWDER (FL) - EL: B, C, D



BATH (LOWER FL) - EL: B, C, D

SENATOR HOMES  
DECOR CENTRE

DATE: FEB 16 2016

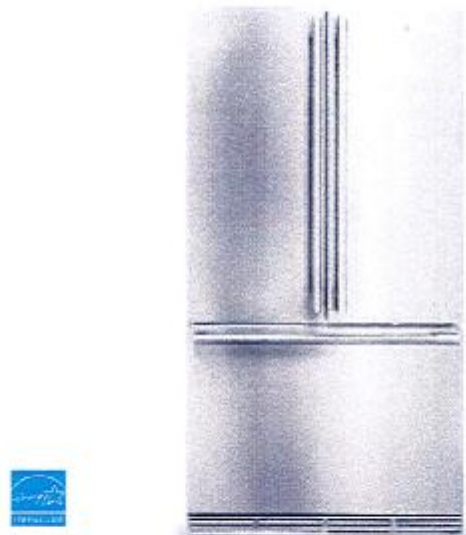
INITIALS: V.L.

188-39



## French Door Refrigerator

E23BC68JPS professional series

**Custom Temp Drawer™**

Enjoy the ultimate in versatility with 9 preset selections including White/Sparkling Wine, Fish/Shellfish, Cheese plus three customizable settings that ensure foods stay at the ideal temperature for serving and maintaining freshness.

**Custom-Design™ Organization System**

With our flexible Tri-Level freezer organization system you can keep your freezer well organized. The three Smooth-Glide® baskets with removable dividers and top removable baskets allow you to configure the space to neatly fit large and small items.

**Theatre Lighting**

Transition LED lighting gradually illuminates the interior with soft but ample light as you open the door.

**PureAdvantage® Filtration Systems**

Our filtration system keeps clean, filtered air circulated throughout to prevent odor transfer and keeps fresh, clean water and ice at your fingertips.

**25 CU. FT. COUNTER-DEPTH FRENCH DOOR REFRIGERATOR****CAPACITIES**

Total Capacity	22.8 Cu. Ft.
Fresh Food Volume	15.7 Cu. Ft.
Freezer Volume	5.9 Cu. Ft.
Total Shelf Area	26.45 Sq. Ft.
Fresh Food Shelf Area	18.72 Sq. Ft.
Freezer Shelf Area	7.7 Sq. Ft.

**EXTERIOR**

Professional Doors and Handle Design	Yes
Custom-Set™ Electronic Controls	Yes
Door Hinge Covers	Yes

**FRESH FOOD CONVENIENCES**

PureAdvantage® Water & Ice / Air Filtration	Yes
Water Filter Location	Bottom Left
Temp Alarm System / Door Ajar Alarm / Power Failure Alarm	Yes
Custom-Design™ Glass Shelves	4 Half Width
Smooth-Glide® Humidity-Controlled Left Crisper	Yes
Smooth-Glide® Humidity-Controlled Right Crisper	Yes
Custom Temp Drawer™	Yes
Wine Rack	Yes
Clear Gallon Adjustable Door Bins	2
Clear 1/2-Gallon Adjustable Door Bins	0
Locking Clear Utility Bin	Yes
Tilt-Out Can Racks	2
Theatre Ramp-Up Multilevel Lighting – LED	Yes

**FREEZER CONVENIENCES**

Automatic Ice Maker	Yes
Ice Maker On/Off	Yes
Fast Ice™	Yes
Self-Closing Drawer	Yes
Sliding Freezer Baskets	2 Full-Width Smooth-Glide® (with Dividers) 1 Half-Width
Plastic Basket Tray	1
Tilt-Out Wire Door Racks	1
Theatre Ramp-Up Multilevel Lighting – LED	Yes

**ADDITIONAL FEATURES**

ENERGY STAR®	Yes
Sabbath Mode (Star-K® Certified)	Yes

**ACCESSORIES**

Collar Kit – PN# ECK230035*	Optional
Louvered Trim Kit – PN# 241723001*	Optional
Water Filter Replacement Cartridge – PN# EWF01	Optional
Air Filter Replacement Cartridge – PN# EAF0BF	Optional

**SPECIFICATIONS**

<b>Product Dimensions –</b>	
Height (with Hinges and 3/8" Rollers)	69-1/2"
Cabinet Width/Door Width	35-5/8"/36"
Depth (Including Handle)	29-1/2"
Depth (with 90° Doors Open)	43-9/16"
Depth (with Drawer Fully Extended)	44-1/2"
Power Supply Connection Location	Right Bottom Rear
Water Inlet Location	Left Bottom Rear
Voltage Rating	120V/60Hz/15 or 20A
Connected Load (kW Rating) @ 120 Volts <sup>1</sup>	1.02
Minimum Circuit Required (Amps)	15
Shipping Weight (Approx.)	348 Lbs.

\*For detailed Louvered Trim Kit and Collar Kit installation instructions, refer to Product Installation Guides on the web at electroluxicon.ca.

<sup>1</sup>An electrical supply with grounded three-prong receptacle is required. The power supply circuit must be installed in accordance with current edition of National Electrical Code (NEC) and local codes & ordinances.

NOTE: Always consult local and national electric and plumbing codes. Refer to Product Installation Guide for detailed installation instructions on the web at electroluxicon.ca.

Specifications subject to change.

electroluxicon.ca

SENATOR HOMES  
DECOR CENTRE

DATE: FEB 16 2016

INITIALS: ICC

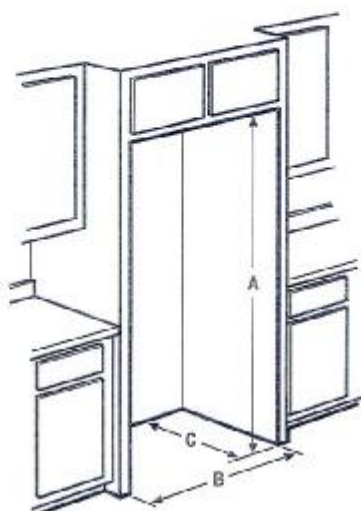


# French Door Refrigerator

E23BC68JPS professional series

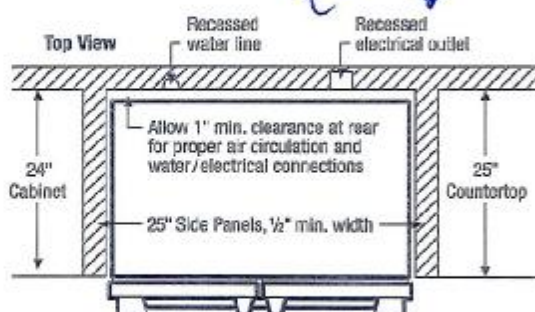
Electrolux | ICON®

1888-39

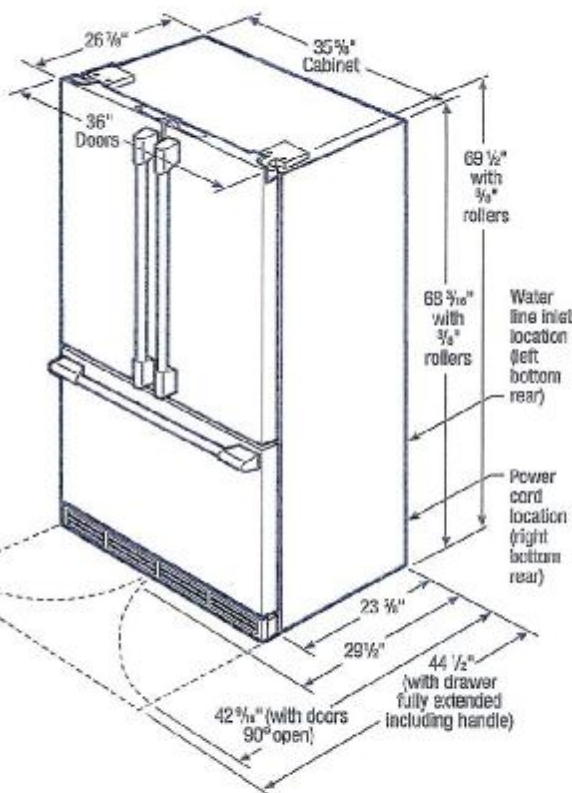
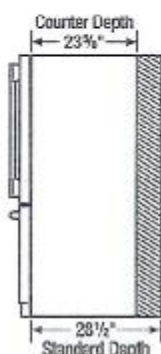


"Built-In Look" Cutout Dimensions

(A) 70 1/4" (B) 36" (C) 25"



Standard Refrigerator Depth vs. Counter Depth



**Note:** Optional Louvered Trim Kit and Collar Kit available for French Door Counter-Depth Refrigerator. For specifications, refer to Louvered Trim Kit (241723001) Installation page or Collar Kit (ECK23CDS) Installation page on web.

## Counter-Depth French Door Refrigerator Specifications

- Product Weight - 336 Lbs.
- An electrical supply with grounded three-prong receptacle is required. The power supply circuit must be installed in accordance with current edition of National Electrical Code (NECA 70) and local codes & ordinances.
- Voltage Rating - 120V/60Hz/15 or 20 Amps
- Connected Load (kW Rating) @ 120 Volts = 1.02kW
- Amps @ 120 Volts = 8.5 Amps
- Always consult local and national electric & plumbing codes.
- Floor should be level surface of hard material, capable of supporting fully loaded refrigerator.
- When installing refrigerator adjacent to wall, cabinet or other appliance that extends beyond front edge of unit, 20" minimum clearance recommended to allow for optimum 120° to 180° door swing, providing complete drawer/crisper access and removal. (Absolute 4-1/2" minimum clearance will ONLY allow for 90° door swing which will provide drawer/crisper access with restricted removal.)
- To ensure optimum performance, avoid installing in direct sunlight or close proximity to range, dishwasher or other heat source.
- For proper ventilation, front grille MUST remain unobstructed.
- Recess electrical outlet when possible.
- Water recess on rear wall recommended to prevent water line damage.
- Water Pressure - Cold water line must provide between 30 and 100 pounds per square inch (psi).

- Copper tubing with 1/4" O.D. recommended for water supply line with length equal to distance from rear of unit to household water supply line plus 7 additional feet. Optional Water Supply Installation Kits available.
- Adjustable front rollers to assist with door alignment.
- If optional Collar Kit (PN# ECK23CDS) is to be used, different cutout dimensions are required. (Refer to Collar Kit ECK23CDS Installation Specifications page on web.)
- If optional Louvered Trim Kit (PN# 241723001) is to be used, different cutout dimensions are required. (Refer to Louvered Trim Kit 241723001 Installation Specifications page on web.)

## "Built-In Look" Specifications

- Minimum opening of 70-1/4"H x 36"W x 25"D required to allow for ease of installation, proper air circulation, and plumbing/electrical connections.
- Remove all wall/door molding prior to installation.

**Note:** For planning purposes only. Refer to Product Installation Guide on the web at [electroluxicon.ca](http://electroluxicon.ca) for detailed instructions.

## Optional Accessories

- Collar Kit - (PN# ECK23CDS).
- Louvered Trim Kit - (PN# 241723001).
- PureAdvantage® Water Filter Replacement Cartridge - (PN# EWF01).
- PureAdvantage® Air Filter Replacement Cartridge - (PN# EAF001).



## Electrolux Major Appliances, N.A.

CANADA • 5855 Terry Fox Way • Mississauga, ON L5V 3E4 • 1-800-265-8352 • [electroluxicon.ca](http://electroluxicon.ca)

© 2015 Electrolux Major Appliances, N.A.

Electrolux Major Appliances, N.A.

High standards of quality at Electrolux Major Appliances, N.A. mean we are constantly working to improve our products. We reserve the right to change specifications or discontinue models without notice.

Printed in Canada

SENATOR HOMES  
DECOR CENTRE

DATE: FEB 16 2016

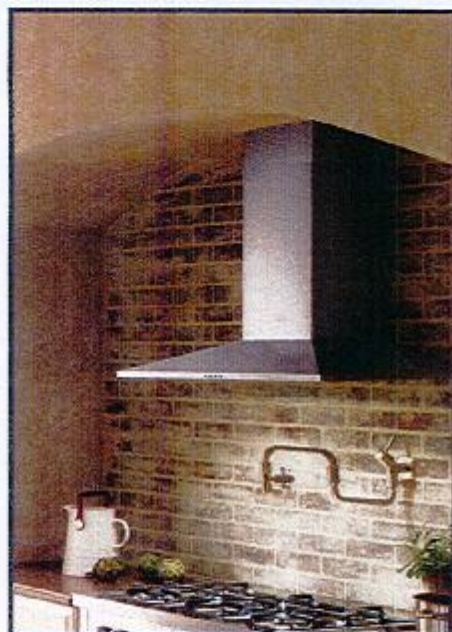
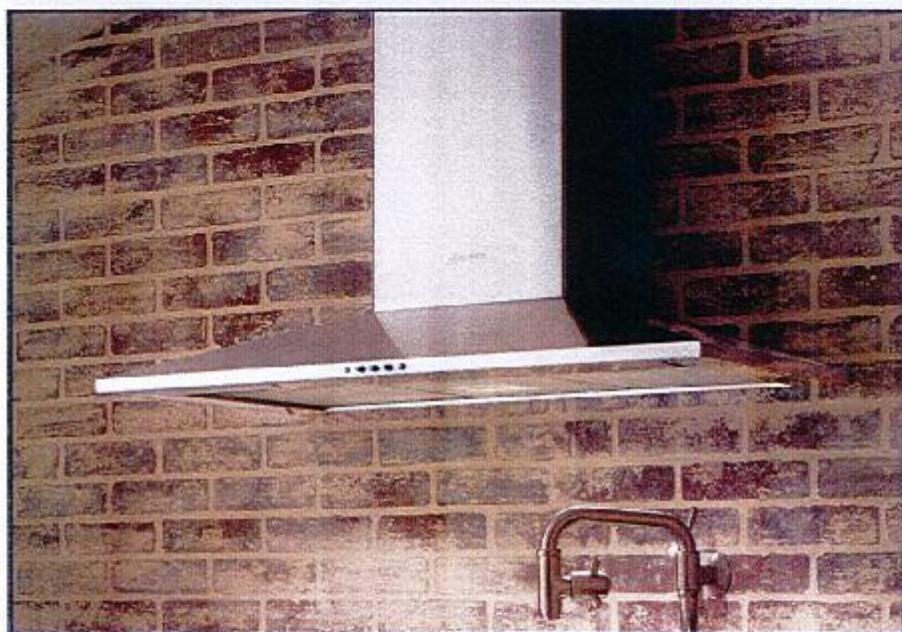
INITIALS: K.C.



# Dama Wall Hood

A value alternative in wall mounted range hoods

188-39  
**FABER**  
ON AIR. SINCE 1955



Designed to offer a high-end decorative look while taking into consideration great value. Traditional styling, great features, and solid performance make the Dama wall hood a great choice in canopy range hoods.

Model #	Size   Color	Performance Range	Sound Levels
DAMA30SS	30 Stainless	160 - 600 CFM	3.5 - 6.5 sones
DAMA36SS	36 Stainless	160 - 600 CFM	3.5 - 6.5 sones
DAMA30SS300	30 Stainless	80 - 300 CFM	2.0 - 4.0 sones
DAMA36SS300	36 Stainless	80 - 300 CFM	2.0 - 4.0 sones



## Feature Chart

Min. / Max. Ceiling Height	7' 7 1/8" - 9' 1/8"
Canopy Depth / Height	19 9/32" D / 4 3/4" H
High Ceiling Kit	Yes - up to 11'
Convertible to Ductless / Recirculating	Yes - ductless kit needed
Controls	3 Speed Push
Lighting	2 X 20 (W) Halogen
Ducting Top	6" Round
Grease Filters	dishwasher safe mesh
Easy Cube Mounting	Yes
Pro Motor with Metal Impellers	Yes
AC Input	120 V - 60 hz
AC Power 600 / 300 cfm	Max 490 W at 4.1 A / 320 W at 2.7 A
<b>Annual Electricity Costs (600 / 300 cfm)</b>	<b>\$5.29 / \$3.62 / Year *</b>

\* Note - ran 30 minutes a day on low speed with the lights on, 365 days, using the North American average of 12.2 cents per kWh.  
p.o. box 435 • Wayland, MA 01778 • tel: (508) 358-5353 • fax: (508) 358-5730 • e-mail: info@faberonline.com • www.faberonline.com

**SENATOR HOMES**  
DECOR CENTRE

DATE: FEB 16 2016  
INITIALS: K.C.

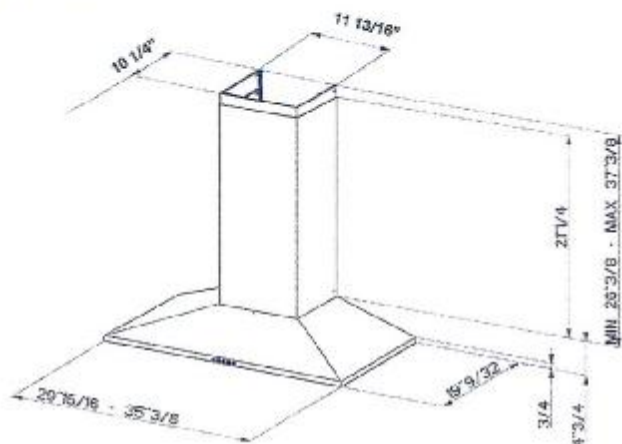


## Dimensional Diagrams

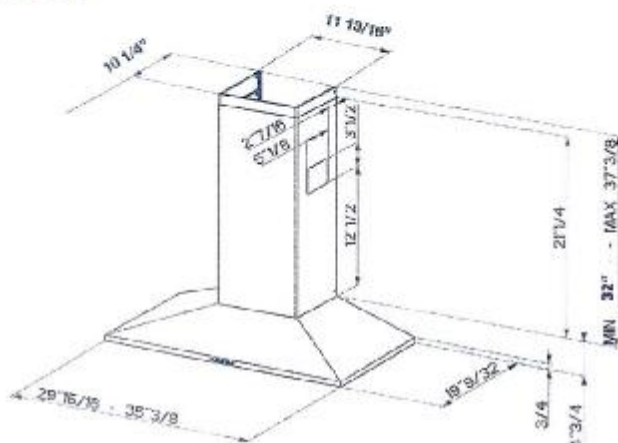
(see installation instructions for more information)

1088-39

### Ducted



### Ductless



min & max ceiling height examples x = range hood height above cook top			
ductless		ducted	
x = 24"	x = 30"	x = 24"	x = 30"
min	min	min	min
8' 3/4"	8' 6 3/4"	7' 7 1/8"	8' 1 1/8"
max	max	max	max
8' 6 1/8"	9' 1/8"	8' 6 1/8"	9' 1/8"

For shorter ceilings, have the chimney cover(s) cut at a sheet metal shop. For higher ceiling installations, the High Ceiling Chimney Kit includes a new 39" upper chimney which would replace the 16 1/8" upper chimney that came with the hood.

## ACCESSORIES

<b>High Ceiling Chimney Kit # HIGH1</b> One 39" upper chimney to replace 16 1/8" upper chimney that came with hood		<b>Replacement Charcoal Filter # FILTER2</b> For ductless installations, high quality, heavy duty filters ensure the removal of smoke and odors from the kitchen.	
<b>Ductless Conversion Kit # DUCT1</b> Includes: • Lower Chimney with holes for ducting • Ductless Diverter Assembly • Vent Grates • Charcoal Filter			



Rev. 11/12

**WARNING!** Product specifications are subject to change without notification. Consult the installation instructions before you begin installing this rangehood.

**SENATOR HOMES  
DECOR CENTRE**

DATE: FEB 16 2016

INITIALS: K.C. X

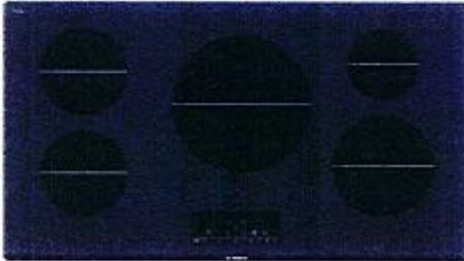


1088-39



## Cooktops

**36" Induction Cooktop**  
**500 Series - Black**  
**NIT5666UC**



**The 500 Series Induction Cooktop is Sleek in Design and Offers Quick and Even Cooking Results.**

- A 11" Heating Element Offers 3,500W of Power for Quick Results.
- Each Element has an Independent Countdown™ Timer
- Only 36" Induction Cooktop in the Class that Requires a 40amp Breaker
- Induction Cooktops - Faster than Gas & Electric. Easier to Clean & More Efficient
- SpeedBoost™ - Boils Water 2x as Fast as Conventional Electric Cooktops

### Technical Data

Sealed Burners :	No
Burners with booster :	All
Dimension of 1st heating element (in) :	7"
Power of 1st heating element (W) :	1.8
Dimension of 2nd heating element (in) :	7"
Power of 2nd heating element (W) :	1.8
Dimension of 3rd heating element (in) :	11"
Power of 3rd heating element (W) :	2.8
Dimension of 4th heating element (in) :	6"
Power of 4th heating element (W) :	1.4
UPC code :	025225603703
Variant color :	Black
Energy source :	Electric
Watts (W) :	9600
Current (A) :	40
Volts (V) :	208-240
Frequency (Hz) :	60
Approval certificates :	CSA
Power cord length (in) :	37"
Power cord length (cm) :	96
Plug type :	no plug
Required cutout size (HxWxD) (in) :	4 1/8" x 34 3/4" x 20"
Required cutout size (HxWxD) (mm) :	105 x 883-886 x 505-508
Minimum distance from counter front (in) :	2 1/4"
Minimum distance from rear wall (in) :	2"
Overall appliance dimensions (HxWxD) (in) :	5/16"+4 1/8" x 37" x 21 1/4"
Overall appliance dimensions (HxWxD) (mm) :	105 x 940 x 540
Product packaging dimensions (HxWxD) (in) :	7 1/16" x 42 1/8" x 26 5/8"
Net weight (lbs) :	44
Net weight (kg) :	20.0
Gross weight (lbs) :	60
Gross weight (kg) :	27.0
Total number of cooktop burners :	5

### Optional accessories

- HEZ390210 : System pan Ø 15cm
- HEZ390220 : System pan Ø 19cm
- HEZ390230 : System pan diameter 21cm

**SENATOR HOMES**  
**DECOR CENTRE**

DATE: FEB 15 2016

INITIALS: K.C. [Signature]

## Cooktops

### 36" Induction Cooktop 500 Series - Black NIT566UC

**The 500 Series Induction Cooktop is Sleek in Design and Offers Quick and Even Cooking Results.**

#### Efficiency

- PotSense™ - Automatically Adjusts Cooking Element to the Size of the Pan Bottom

#### Convenience

- Improved Installation Flexibility: Only 36" Induction Cooktop in Class that Requires a 40amp Breaker
- Overflow Detection - Sounds Alarm and Shuts off Cooktop in Case of an Overflow
- ChildLock - Prevents the Cooktop from Being Accidentally Switched on. Locks Temperature Settings if in Use.
- SafeStart - Ensures that Element is Only Activated, if Suitable Cookware is in Position; no Activation When Other Metal Objects are Placed on Element

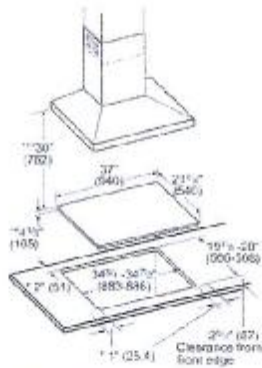
**SENATOR HOMES**  
 DECOR CENTRE

DATE: FEB 16 2016

INITIALS: F.C.

## Cooktops

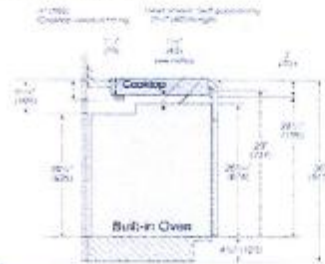
### 36" Induction Cooktop 500 Series - Black NIT5666UC



- \* Minimum clearance from the cooktop (cutout) to the wall
- \*\* Installed depth includes gap of 1" (25.4 mm) to the ventilation
- \*\*\* Minimum clearance between surface of the cooktop and lower edge of the exhaust hood.

measurements in inches (mm)

36" Built-in type induction cooktop



Notes:

(Dimensions based on standard countertop height (36" with 1 1/2" top edge including 1/2" overhang)

The built-in unit can be installed below the induction cooktop as long as there is a minimum 1" (25.4 mm) clearance between the bottom of the cooktop and the top of the unit.

measurements in inches (mm)



# 30" Speed Oven

800 Series - Stainless Steel HMC80151UC

188-39



**BOSCH**  
Invented for life



**HMC80151UC**  
Stainless Steel

The speed oven pairs the cooking qualities of a conventional oven with the speed of microwave technology.

## Features & Benefits

AutoChef® cooking cycles offer faster cooking times for your convenience.

Flush install matches Bosch wall oven, steam oven, or warming drawer.

2-in-1 microwave and convection oven for a variety of cooking options.

30" width can be installed in horizontal and vertical configuration.

Electrical connection - 120 Volt NEMA 5-20 three prong plug.

## General Properties

Cavity material	Stainless steel
Max. microwave power (W)	1,000 W

## Capacity

Cavity capacity (cu. ft.)	1.6
Turntable diameter (in.)	14 1/8"

## Technical Details

Watts (W)	1,920 W
Circuit breaker (A)	20 A
Volts (V)	120 V
Frequency (Hz)	60 Hz
Power cord length (in)	43"
Plug type	NEMA 5-20 - 3 prong plug



*elec \**

## Dimensions & Weight

Overall appliance dimensions (HxWxD) (in)	19 5/8" x 29 3/4" x 22 3/8"
Required cutout size (HxWxD) (in)	19 1/4" x 28 1/2" x 22"
Oven overall interior dimensions (HxWxD) (in.)	9 7/8" x 16 1/2" x 16 1/2"
Turntable - Metal Max. Cookware	12 3/4" dia.
Turntable - Ceramic Max. Cookware	12 1/2" dia.
Rack - Rectangular Cookware Max.	15" x 12"
Net weight (lbs)	92 lbs

## Accessories-Included

Included	Metal turntable, cooking rack, ceramic cooking tray
----------	---



For help and assistance with Bosch accessories please call 1-800-944-2964 Mon-Fri 8am to 8pm

Notes: All height, width and depth dimensions are shown in inches. BSH reserves the absolute and unrestricted right to change product materials and specifications, at any time, without notice. Consult the product's installation instructions for final dimensional data and other details prior to making cutout. Applicable product warranty can be found in accompanying product literature or you may contact your account manager for further details.

Warranties: Bosch warrants that the Product is free from defects in materials and workmanship for a period of three hundred and sixty-five (365) days from the date of purchase. The foregoing timeline begins to run upon the date of purchase, and shall not be stalled, tolled, extended, or suspended, for any reason whatsoever. This Product is also warranted to be free from cosmetic defects in material and workmanship (such as scratches of stainless steel, paint/porcelain blemishes, chip, dents, or other damage) to the finish of the Product, for a period of thirty (30) days from the date of purchase or closing date for new construction. This cosmetic warranty excludes slight color variations due to inherent differences in painted and porcelain parts, as well as differences caused by kitchen lighting, product location, or other similar factors. This cosmetic warranty specifically excludes any display, floor, "As Is", or "B" stock appliances.

For more information on our entire line of products, go to [www.bosch-home.ca](http://www.bosch-home.ca) or call 1-800-944-2964

© BSH Home Appliances Limited. All rights reserved. Bosch is a registered trademark of Robert Bosch GmbH.

09/15

**SENATOR HOMES**  
**DECOR CENTRE**

DATE: FEB 16 2016

INITIALS: K.C. [Signature]



# 30" Speed Oven

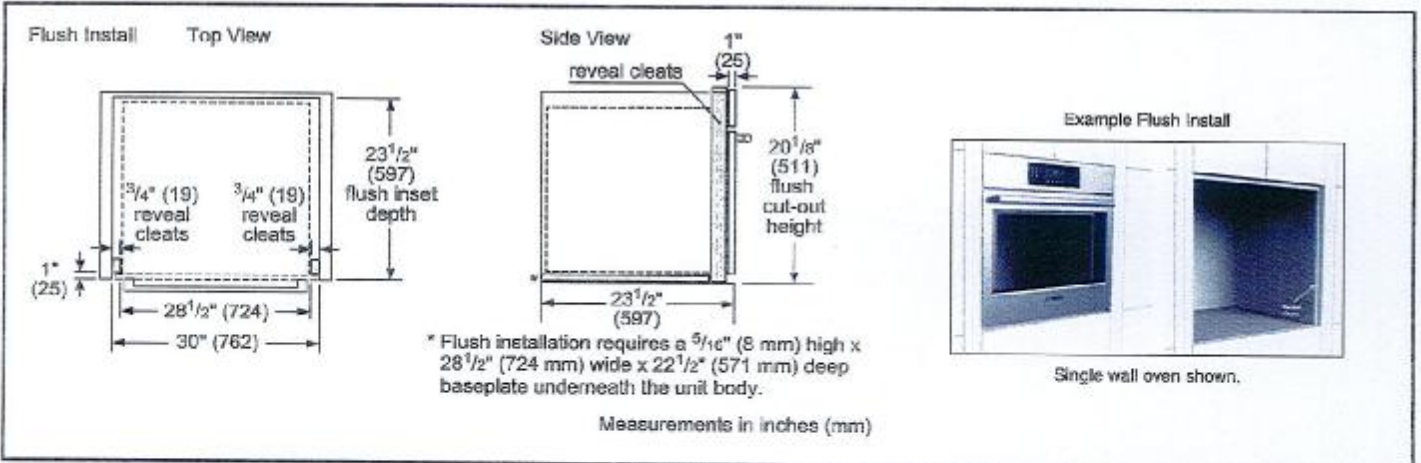
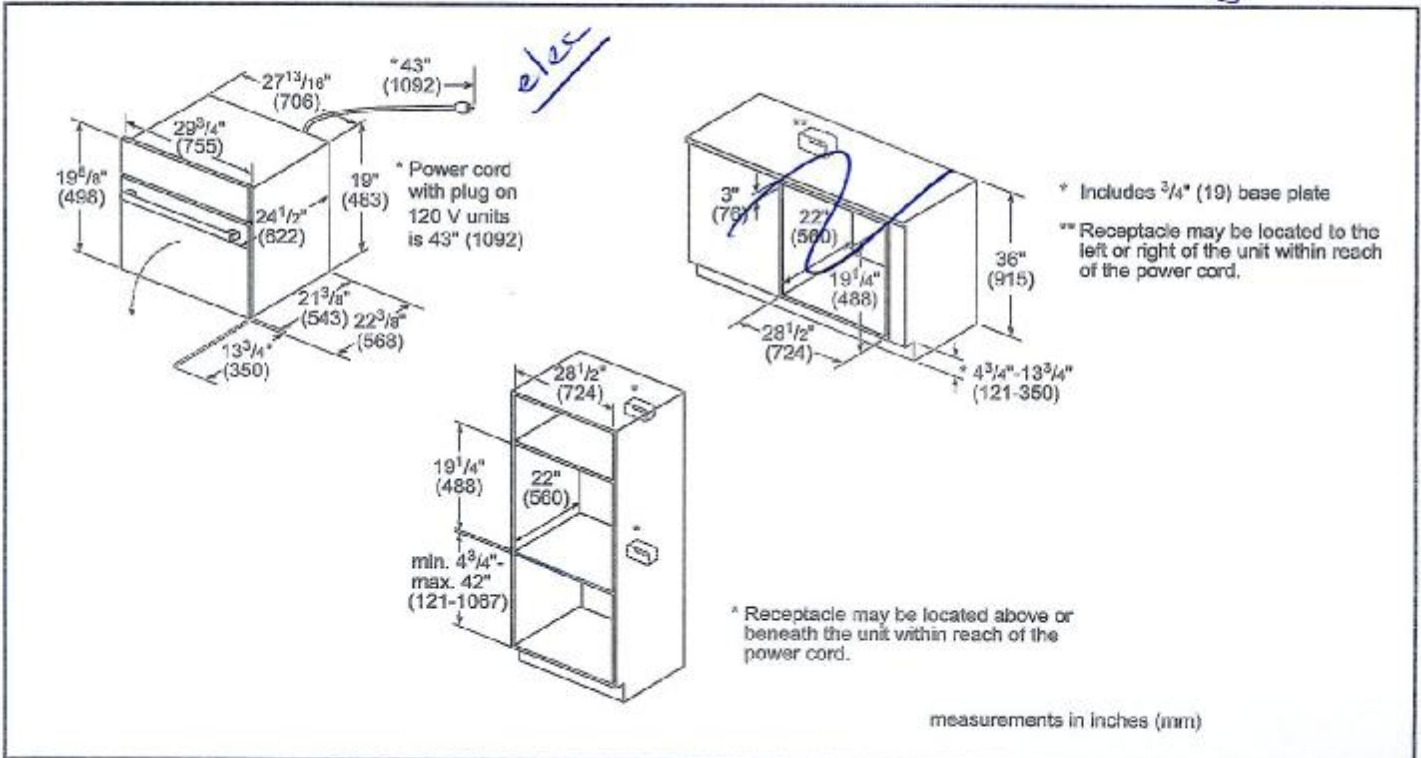
800 Series - Stainless Steel HMC80151UC

1088-39



## Installation Details

*\*\* See Next Pg for Details.*



For help and assistance with Bosch accessories please call 1-800-944-2904 Mon-Fri 8am to 5pm

Notes: All height, width and depth dimensions are shown in inches. BSH reserves the absolute and unrestricted right to change product materials and specifications, at any time, without notice. Consult the product's installation instructions for final dimensional data and other details prior to making cutout. Applicable product warranty can be found in accompanying product literature or you may contact your account manager for further details.

Warranties: Bosch warrants that the Product is free from defects in materials and workmanship for a period of three hundred and sixty-five (365) days from the date of purchase. The foregoing timeline begins to run upon the date of purchase, and shall not be stalled, tolled, extended, or suspended, for any reason whatsoever. This Product is also warranted to be free from cosmetic defects in material and workmanship (such as scratches of stainless steel, paint/porcelain blemishes, chip, dents, or other damage) to the finish of the Product, for a period of thirty (30) days from the date of purchase or closing date for new construction. This cosmetic warranty excludes slight color variations due to inherent differences in painted and porcelain parts, as well as differences caused by kitchen lighting, product location, or other similar factors. This cosmetic warranty specifically excludes any display, floor, "As is", or "B" stock appliances.

For more information on our entire line of products, go to [www.bosch-home.ca](http://www.bosch-home.ca) or call 1-800-944-2904

© BSH Home Appliances Limited. All rights reserved. Bosch is a registered trademark of Robert Bosch GmbH.

09/15

SENATOR HOMES  
DECOR CENTRE  
DATE: FEB 16 2016  
INITIALS: K.C.

# 30" Speed Oven

800 Series - Stainless Steel HMC80151UC

1788-39



**BOSCH**  
Invented for life

## Installation Details

**Standard**

1 3/4" (44mm)

The ovens will overlap the cutout resulting in a 1/2" (13mm) spacing between the products.

**IMPORTANT:** The spacing between cutouts applies when installing any Bosch 30" or 27" single, double, combination and 27"/30" compact oven in a side-by-side installation.

**Side-by-Side Installation**

1 1/2" (38mm)

**Standard Installation**  
30" Speed Oven over Storage or Warming Drawer

28 1/2" (724)  
28 5/8" (727)  
min. 4 3/4" (121)  
max. 38" (964)

\* For installation into a wall cabinet, the receptacle may be installed above, below, or to the left or right of the unit within range of the power cord.

**Flush Installation**  
Speed Oven over Storage or Warming Drawer

Side View

1" (25)  
29 1/8" (740) flush cut out height  
24 1/2" (622)

Measurements in inches (mm)

**Standard Installation**  
30" Speed Oven over Single Oven\*\*\*

28 1/2" (724)  
19 1/4" (488)  
27-28 5/8" (686-727)  
min. 4 3/4" (121)  
max. 18" (456)

\* Junction box may be located above or next to the unit within the reach of the power cord.  
\*\* Junction box may be located below (depending on space) or next to the unit within the reach of the power cord.  
\*\*\* Most combinations available as combo oven (one cut out, one electrical hook up).

Minimum dimension between cut outs:  
• 1" (25mm) for wall oven cut out of 28 5/8"  
• 2 5/8" (67mm) for wall oven cut out of 27"

measurements in inches (mm)

**NOTE:** This configuration is available as a combo oven (one cut out, one electrical hook up) - HBL5751UC & HBL8751UC

**Flush Installation**  
Speed Oven over 30" Single Oven\*\*

Side View

1" (25)  
20 1/8" (511) flush cut out height  
29 1/8" (740) flush cut out height  
24 1/2" (622)

**Speed Oven**  
\*\*\* Flush installation requires a base plate underneath the body: 30" Products - Dimensions: H 9 1/8" (8) x W 28 1/2" (724) x D 22 1/2" (571)

**Wall Oven**  
\*\*\* Flush installation requires a base plate underneath the body: 30" Products - Dimensions: H 9 1/8" (8) x W 28 1/2" (724) x D 22 1/2" (571)

minimum 1/2" (13) required between cutouts\*

**IMPORTANT:** base has to be able to support oven weight. Please check oven manual for minimum weight requirements.

\*\* Most combinations available as combo oven (one cut out, one electrical hook up).

measurements in inches (mm)

**NOTE:** This configuration is available as a combo oven. See Note at left for details.

For help and assistance with Bosch accessories please call 1-800-944-2904 Mon-Fri 8am to 6pm

Notes: All height, width and depth dimensions are shown in inches. BSH reserves the absolute and unrestricted right to change product materials and specifications, at any time, without notice. Consult the product's installation instructions for final dimensional data and other details prior to making cutout. Applicable product warranty can be found in accompanying product literature or you may contact your account manager for further details.

Warranties: Bosch warrants that the Product is free from defects in materials and workmanship for a period of three hundred and sixty-five (365) days from the date of purchase. The foregoing timeline begins to run upon the date of purchase, and shall not be stalled, tolled, extended, or suspended, for any reason whatsoever. This Product is also warranted to be free from cosmetic defects in material and workmanship (such as scratches of stainless steel, paint/porcelain blemishes, chip, dents, or other damage) to the finish of the Product, for a period of thirty (30) days from the date of purchase or closing date for new construction. This cosmetic warranty excludes slight color variations due to inherent differences in painted and porcelain parts, as well as differences caused by kitchen lighting, product location, or other similar factors. This cosmetic warranty specifically excludes any display, floor, "As Is", or "B" stock appliances.

For more information on our entire line of products, go to [www.bosch-home.ca](http://www.bosch-home.ca) or call 1-800-944-2904

© BSH Home Appliances Limited. All rights reserved. Bosch is a registered trademark of Robert Bosch GmbH.

09/15

**SENATOR HOMES**  
**DECOR CENTRE**

DATE: FEB 16 2016

INITIALS: K.C. - J



# 30" Single Wall Oven

800 Series - Stainless Steel HBL8451UC

1088-39



**HBL8451UC**  
Stainless Steel

Also available in:  
Black HBL8461UC

The Bosch wall oven  
installs flush and features  
a QuietClose™ door.

### Features & Benefits

- Dampened hinges softly and quietly guide the QuietClose™ door shut.
- A full-extension telescopic rack offers safe access to the oven cavity.
- Touch control with SteelTouch™ buttons makes operating the oven easier.
- The wall oven is designed to be installed flush with cabinetry.
- Bosch wall ovens are compatible with most competitors' cutouts.
- Genuine European Convection for even baking results on multiple racks.

### General Properties

Cooking modes	Bake, Variable Broil (hi & low), Roast, Warm, Sabbath, Proof Dough, Convection Bake, Convection Broil, Convection Roast, Pizza, Multi Rack, Genuine European Convection, Convection Conversion, Temperature Probe, Fast Preheat
---------------	---

Cleaning type	Self Clean
Telescopic rack	1
Illumination type	Incandescent
Interior lights	2

### Oven Performance

Bake / broil element wattages	2,400 / 3,800 W
Convection element wattages	2,000 W

### Technical Details

Watts (W)	6,325 W
Circuit breaker (A)	30 A *
Volts (V)	240 / 208 V
Frequency (Hz)	60 Hz
Power cord length (in)	50"
Plug type	Fixed Connection, No Plug *
Energy source	Electric *



elec \*

### Dimensions & Weight

Overall appliance dimensions (HxWxD) (in)	29" x 29 3/4" x 24 1/2"
Required cutout size (HxWxD) (in)	27" - 28 5/8" x 28 1/2" x 23 1/2"
Oven cavity size (cu. ft.)	4.6
Overall oven interior dimensions (HxWxD) (in)	17 13/16" x 24 1/8" x 18"
Usable oven interior dimensions (HxWxD) (in)	12 5/16" x 23 1/4" x 15 1/4"
Net weight (lbs)	149 lbs

### Accessories-Included

Included	1 Telescopic and 2 Standard Oven Racks, Temperature Probe
----------	---

### Accessories-Optional



**HEZTR301**  
30" Telescopic Rack



For help and assistance with Bosch accessories please call 1-800-944-2904 Mon-Fri 9am to 6pm EST

Notes: All height, width and depth dimensions are shown in inches. BSH reserves the absolute and unrestricted right to change product materials and specifications, at any time, without notice. Consult the product's installation instructions for final dimensional data and other details prior to making cutout. Applicable product warranty can be found in accompanying product literature or you may contact your account manager for further details.

Warranties: Bosch warrants that the Product is free from defects in materials and workmanship for a period of three hundred and sixty-five (365) days from the date of purchase. The foregoing timeline begins to run upon the date of purchase, and shall not be stalled, tolled, extended, or suspended, for any reason whatsoever. This Product is also warranted to be free from cosmetic defects in material and workmanship (such as scratches of stainless steel, paint/porcelain blemishes, chip, dents, or other damage) to the finish of the Product, for a period of thirty (30) days from the date of purchase or closing date for new construction. This cosmetic warranty excludes slight color variations due to inherent differences in painted and porcelain parts, as well as differences caused by kitchen lighting, product location, or other similar factors. This cosmetic warranty specifically excludes any display, floor, "As Is", or "B" stock appliances.

For more information on our entire line of products, go to [www.bosch-home.ca](http://www.bosch-home.ca) or call 1-800-944-2904

© BSH Home Appliances Limited. All rights reserved. Bosch is a registered trademark of Robert Bosch GmbH.

SENATOR HOMES  
DECOR CENTRE  
DATE: FEB 16 2016  
INITIALS: K.C.



# 30" Single Wall Oven

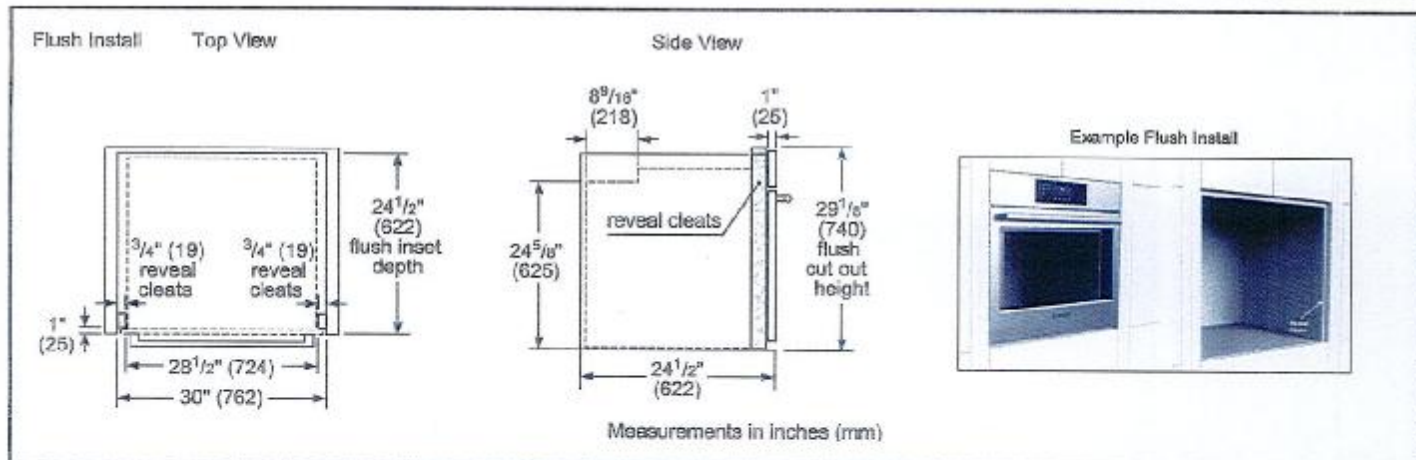
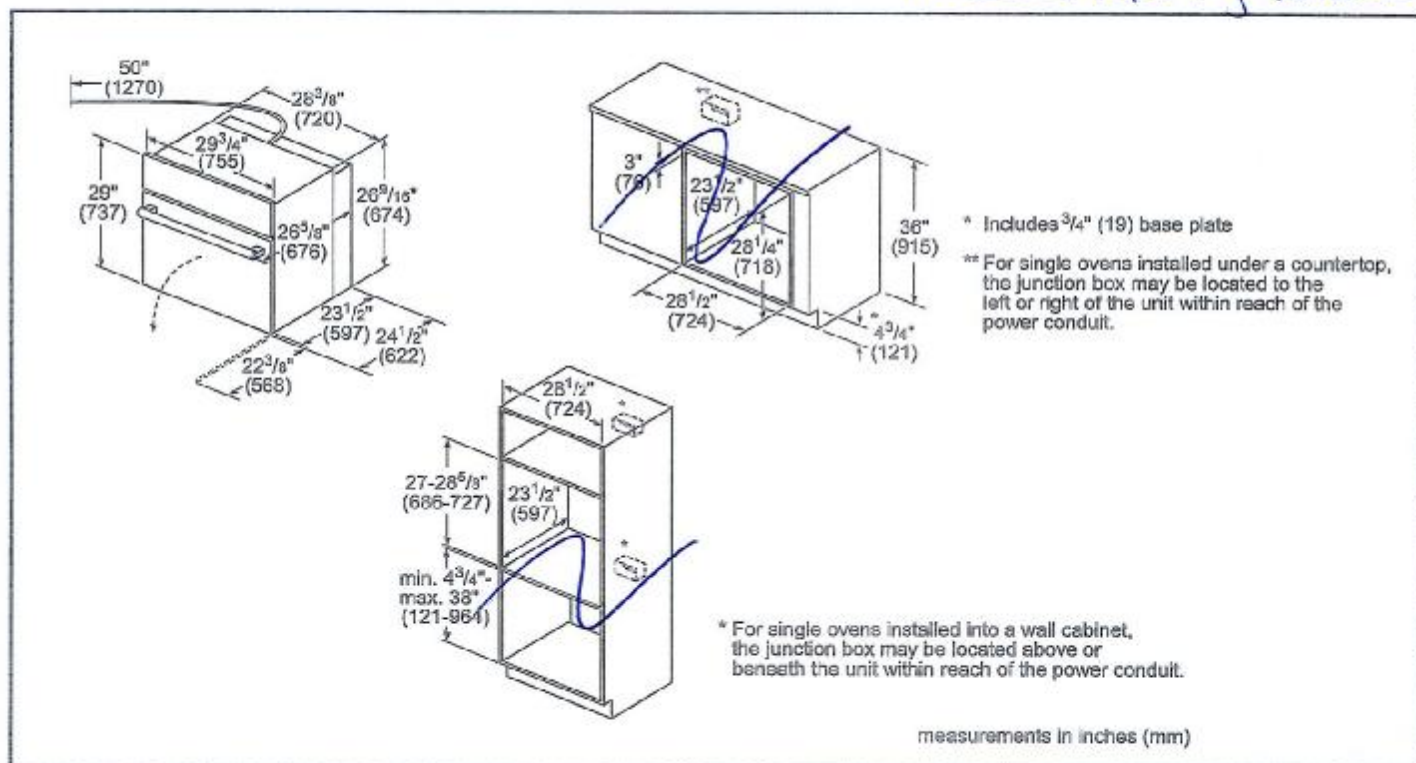
800 Series - Stainless Steel HBL0451UC

1088-30



## Installation Details

*\*\* See Next Pg for Details*



For help and assistance with Bosch accessories please call 1-800-944-2904 Mon-Fri 9am to 6pm EST

Notes: All height, width and depth dimensions are shown in inches. BSH reserves the absolute and unrestricted right to change product materials and specifications, at any time, without notice. Consult the product's installation instructions for final dimensional data and other details prior to making cutout. Applicable product warranty can be found in accompanying product literature or you may contact your account manager for further details.

Warranties: Bosch warrants that the Product is free from defects in materials and workmanship for a period of three hundred and sixty-five (365) days from the date of purchase. The foregoing timeline begins to run upon the date of purchase, and shall not be stalled, tolled, extended, or suspended, for any reason whatsoever. This Product is also warranted to be free from cosmetic defects in material and workmanship (such as scratches of stainless steel, paint/porcelain blemishes, chip, dents, or other damage) to the finish of the Product, for a period of thirty (30) days from the date of purchase or closing date for new construction. This cosmetic warranty excludes slight color variations due to inherent differences in painted and porcelain parts, as well as differences caused by kitchen lighting, product location, or other similar factors. This cosmetic warranty specifically excludes any display, floor, "As Is", or "B" stock appliances.

For more information on our entire line of products, go to [www.bosch-home.ca](http://www.bosch-home.ca) or call 1-800-944-2904

© BSH Home Appliances Limited. All rights reserved. Bosch is a registered trademark of Robert Bosch GmbH.

C8/15

SENATOR HOMES  
DECOR CENTRE

FEB 16 2016

DATE:

INITIALS:

K.C.



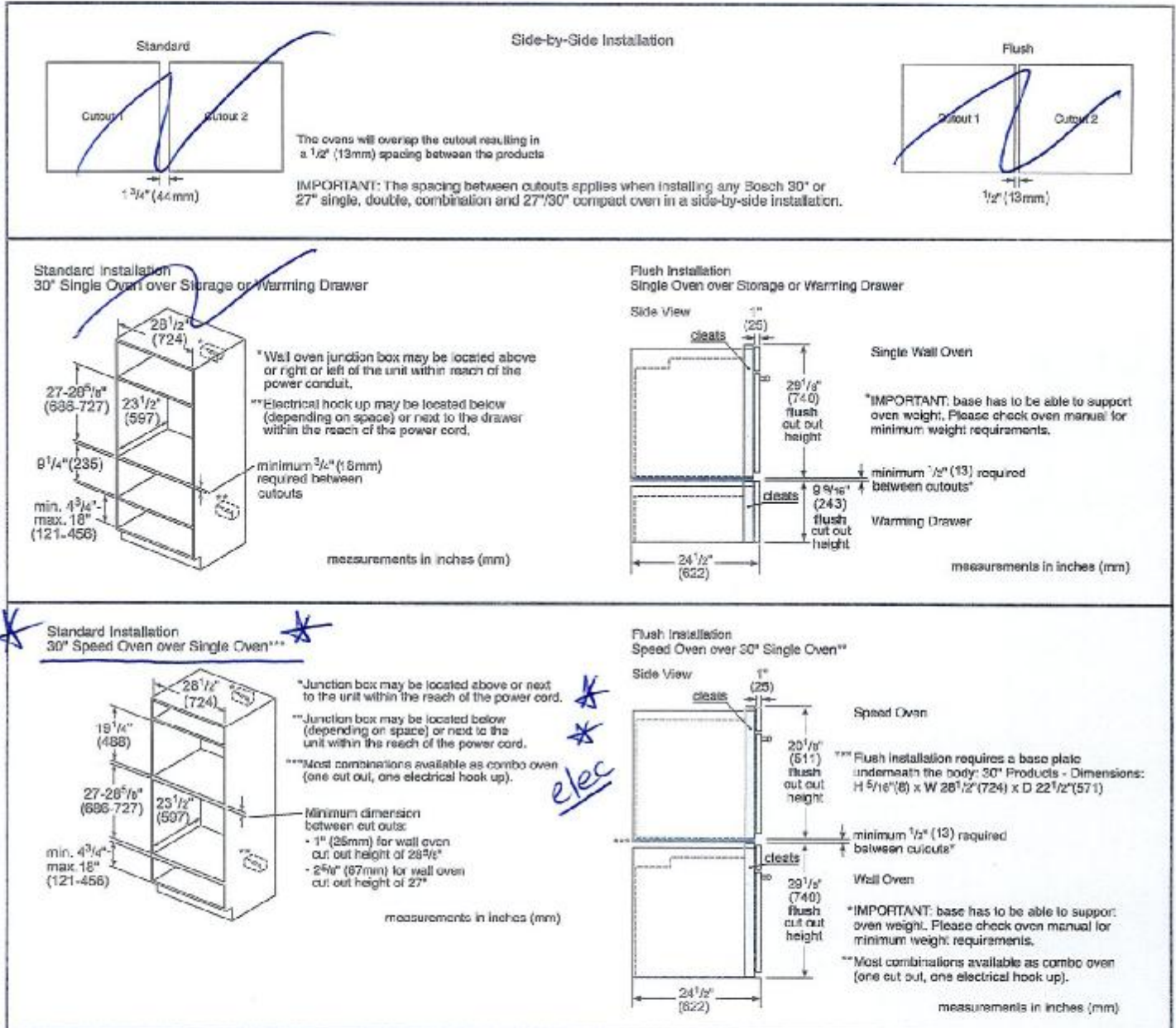
# 30" Single Wall Oven

800 Series - Stainless Steel HBL8451UC

1988-39



## Installation Details



For help and assistance with Bosch accessories please call 1-800-844-2904 Mon-Fri 8am to 6pm EST

Notes: All height, width and depth dimensions are shown in inches. BSH reserves the absolute and unrestricted right to change product materials and specifications, at any time, without notice. Consult the product's installation instructions for final dimensional data and other details prior to making cutout. Applicable product warranty can be found in accompanying product literature or you may contact your account manager for further details.

Warranties: Bosch warrants that the Product is free from defects in materials and workmanship for a period of three hundred and sixty-five (365) days from the date of purchase. The foregoing timeline begins to run upon the date of purchase, and shall not be stalled, tolled, extended, or suspended, for any reason whatsoever. This Product is also warranted to be free from cosmetic defects in material and workmanship (such as scratches of stainless steel, paint/porcelain blemishes, chip, dents, or other damage) to the finish of the Product, for a period of thirty (30) days from the date of purchase or closing date for new construction. This cosmetic warranty excludes slight color variations due to inherent differences in painted and porcelain parts, as well as differences caused by kitchen lighting, product location, or other similar factors. This cosmetic warranty specifically excludes any display, floor, "As Is", or "B" stock appliances.

For more information on our entire line of products, go to [www.bosch-home.ca](http://www.bosch-home.ca) or call 1-800-844-2904

© BSH Home Appliances Limited. All rights reserved. Bosch is a registered trademark of Robert Bosch GmbH.

09/15

SENATOR HOMES  
DECOR CENTRE

DATE: FEB 16 2016

INITIALS: K.C.

## Dishwashers

**24" Bar Handle Dishwasher**  
**500 Series- Stainless steel**  
**SHX65T55UC**



**The new 3rd rack now offers 30% more loading area. Perfect for ramekins, cooking utensils and extra-long silverware.**

### Technical Data

Adjustable upper rack :	Rackmatic 3-stage
Upper rack cup shelf :	2
3rd Rack :	3rd Rack 1.0
Silverware Basket :	Standard
Optional accessories :	SGZ1010UC, SMZ4000UC, SMZ5000, SMZ5002UC, SMZPC002UC
UPC code :	825225904892
Variant color :	Stainless steel
Panel ready :	No
Silence level (dBA) :	44
Watts (W) :	1300
Current (A) :	12
Volts (V) :	120
Frequency (Hz) :	60
Energy Consumption (kWh/yr) :	259
Energy Star® qualified :	Yes
Plug type :	fixed connection
Required cutout size (HxWxD) (in) :	33 7/8 " x 23 5/8 " x 24 "
Required cutout size (HxWxD) (mm) :	860-890 x 600 x 610
Overall appliance dimensions (HxWxD) (in) :	33 7/8 " x 23 9/16 " x 23 3/4 "
Power cord length (in) :	43 1/2"
Power cord length (cm) :	110
Length outlet hose (in) :	67 "
Length outlet hose (cm) :	175.0
Length inlet hose (in) :	53"
Length inlet hose (cm) :	135
Product packaging dimensions (HxWxD) (in) :	35 3/4" x 26" x 29 5/16"
Tub material :	Stainless steel
Tub type :	TallTub
ADA Compliant :	No
Number of place settings :	15

### Optional accessories

SGZ1010UC : Drain hose extension kit  
SMZ4000UC : silverware basket US Duo  
SMZ5000 : Dishwashing aid set  
SMZ5002UC : Silverware box  
SMZPC002UC : Powercord with cold plug

SENATOR HOMES  
DECOR CENTRE

DATE: FEB 16 2016  
INITIALS: K.C.



188-39



## Amana® 4.8 cu. ft. I.E.C. ENERGY STAR® Qualified Front Load Washer

MSRP \$1,099.99

This 4.8 cu. ft., ENERGY STAR® qualified front load washer features 7 versatile wash cycles, auto load size sensing and a helpful Efficiency Monitor.

**Model #:** NFW5800DW

**Available Colours:** white

**SKU:** NFW5800DW **Category:** Washers



---

### Key Features

No features available.

---

### Additional Features

#### Automatic Detergent Dispenser

The detergent dispenser automatically delivers the perfect amount of detergent at the right time during the washer cycle.

#### 4 Wash Temperatures

Save energy with cold water or get the extra cleaning power of warm water. With four wash settings to choose from, you'll always have the ideal temperature for the job.

#### Delay Wash

Save energy and time and avoid having to rewash clothes by setting your washer to start cleaning up to 8 hours later, when utility rates may be lower or unloading the washer is more convenient. Only available in the few areas that offer reduced energy rates during off-peak hours.

#### 1,200 RPM Spin Speed

At 1,200 RPM, Amana brand's highest spin speeds save energy by removing more water in the washer so clothes spend less time in the dryer.

#### 7 Wash Cycles

Heavy Duty, Drain and Spin, Clean Washer, Quick, Cold, Delicates, Normal Clean with high efficiency. This front load washer offers 7 cycles to handle a wide variety of laundry loads ranging from delicate to bulky items like blankets and jackets. Plus, there's a clean washer cycle as well.

---

### Full Description

This 4.8 cu. ft., ENERGY STAR® qualified front load washer features 7 versatile wash cycles, auto load size sensing and a helpful Efficiency Monitor.

---

### Specifications

**SENATOR HOMES**  
**DECOR CENTRE**  
MAR 07 2016  
DATE: \_\_\_\_\_  
INITIALS: CONFIRMED BY EMAIL

<b>Colour</b>	White	n88-39
<b>Engery Star Qualified</b>	Yes	
<b>Washer Type</b>	Front-Load	
<b>Capacity (cu.ft.)</b>	4.8	
<b>Stackable</b>	Yes	
<b>Electrical Requirement</b>	120V	
<b>Energide Rating (KWH)</b>	145 kWh/ per year	
<b>Steam Washer</b>	No	
<b>No. of Cycles</b>	7	
<b>Cycle Descriptions</b>	Clean Washer with affresh, Cold Wash, Delicates, Drain & Spin, Heavy Duty, Normal, Quick Wash	
<b>No. of Options</b>	n/a	
<b>Option Descriptions</b>	Control Lock, End of Cycle Signal, Extra Rinse	
<b>Internal Water Heater</b>	No	
<b>Drive Type</b>	Direct Drive	
<b>Stainless Steel Drum</b>	Yes	
<b>Reversible Door Swing</b>	No	
<b>Height (inches)</b>	38 3/4	
<b>Width (inches)</b>	27 ✓	
<b>Depth (inches)</b>	33 1/8 ✓	
<b>Matching Dryer Model No.</b>	YNED5800DW	
<b>Warranty Parts (Years)</b>	1	
<b>Warranty Labour (Years)</b>	1	

## Manuals & Literature

[Dimension Guide \(527.82 KB\)](#)

[Energy Guide \(313.04 KB\)](#)

[Installation & Instructions \(4.12 MB\)](#)

[Use and Care Guide \(5.18 MB\)](#)

## Warranty Information

### Limited One Year Warranty

Parts and Labour. For one (1) year from the original retail purchase date, any part which fails in normal home use will be repaired or replaced free of charge. Refer to the Use and Care for warranty details.

[Warranty \(224.53 KB\)](#)

**SENATOR HOMES  
DECOR CENTRE**

DATE: MAR 07 2016

INITIALS: \_\_\_\_\_

**CONFIRMED BY EMAIL**



188-39



## Amana® 7.3 cu. ft. Electric Dryer with Efficiency Monitor

MSRP \$899.99

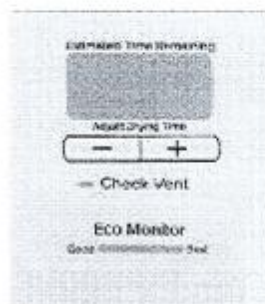
This 7.3 cu. ft. capacity electric dryer features Sensor Drying, 5 useful dryer cycles, temperature controls and drying levels to ensure you get the fabric care you want, while also saving energy.

**Model #:** YNED5800DW

**Available Colours:** white

**SKU:** YNED5800DW **Category:** Dryers

### Key Features



#### Efficiency Monitor

The Efficiency Monitor gives real time feedback about how the dryer cycles and options you choose affect your overall energy consumption. Now you can take the mystery out of efficiency.



#### Sensor Drying



#### 3 Drying Levels

Get the custom fabric care you need. Three drying levels allow you to select the right level for the job, so you save money and energy and help prevent overdrying.

### Additional Features

#### Stackable Washer and Dryer

With the available stacking kit, this high efficiency washer and dryer pair fits in small spaces, so you have more space to get around in your laundry room.

#### Status Indicator

For when you just have to know, this dryer features a status indicator to tell you exactly where your clothes are in the drying process.

**SENATOR HOMES  
DECOR CENTRE**  
DATE: MAR 07 2016  
INITIALS: CONFIRMED BY EMAIL

188-39

#### 4 Temperature Settings

Four temperature settings provide you with more precision and greater ability to match your needs. Settings are High, Medium, Low and Air Dry.

#### 7.3 cu. ft. Dyer Capacity

Our largest capacity front load dryer ever. This 7.3 cu. ft. capacity dryer will easily handle large loads from the washer. That means you can do more laundry in fewer loads, save money on utility bills and save time, too.

### Full Description

This 7.3 cu. ft. capacity electric dryer features Sensor Drying, 5 useful dryer cycles, temperature controls and drying levels to ensure you get the fabric care you want, while also saving energy. A helpful Efficiency Monitor also comes with this dryer, which allows you to see how the different temperature controls and dryer cycles affect your energy usage. And because this is Amana brand's largest dryer, you get excellent efficiency and you can dry more clothes in fewer loads.

### Specifications

Colour	White
Engery Star Qualified	No
Energide Rating (KWH)	n/a
Height (inches)	38 1/8
Width (inches)	27 ✓
Depth (inches)	31 ✓
Matching Washer Model No.	NFW5800DW
Dryer Type	Vented
Power Source	Electric
Capacity (cu.ft.)	7.3
Stackable	Yes
Electrical Requirement	240V
No. of Cycles	5
Cycle Descriptions	Delicates, Heavy Dry, Normal, Quick Dry, Timed Dry
No. of Options	1
Option Descriptions	Control Lock
Moisture Sensor	Yes
Drying Rack	No
Timed Dry Option	Yes
Warranty Parts (Years)	1
Warranty Labour (Years)	1
Steam Dryer	No
Reversible Door Swing	Yes

### Manuals & Literature

[Installation & Instructions \(8.6 MB\)](#)  
[Use and Care Guide \(5.08 MB\)](#)

### Warranty Information

#### Limited One Year Warranty

Parts and Labour. For one (1) year from the original retail purchase date, any part which fails in normal home use will be repaired or replaced free of charge. Refer to the Use and Care for warranty details.

SENATOR HOMES  
DECOR CENTRE

DATE: MAR 07 2016

INITIALS: CONFIRMED BY EMAIL



Purchaser: Kenneth Chi-Heng Lo

Property: 39 Block 5 of Plan -

Telephone Res. / Bus: (647) 888-0238

Project: North 88 Developments Inc.

Decor Advisor: Nicole Soares

Model and Elevation: Orchid-Elev B

Layout Changes: ☒ Yes ☐ No

Sketch Attached: ☒ Yes ☐ No

Exterior Colour Scheme:

### 1. Cabinetry

	Style and Colour	Counter Top	Hardware
Kitchen / Breakfast	ANNEX DHGL: ARTICO GLOSS MWP	*ORGANIC WHITE 4600	9677
Kitchen Island	ANNEX DHGL: EUROLINE 03 GLOSS CTR	*ORGANIC WHITE 4600	9677
Laundry Room			
Powder Room	MANCHESTER MAPLE: SOAPSTONE	CALCUTTA MARBLE 4925K-07	9677
Main Bathroom	MANCHESTER SOAPSTONE	CALCUTTA MARBLE 4925K-07	9677
Master Ensuite Bathroom	MANCHESTER PAINT: CAVIAR	CALCUTTA MARBLE 4925K-07	9677
Second Ensuite Bathroom (If Applicable)			
Lower Level Ensuite	MANCHESTER PAINT: CANNOLI	INUKSHUK CARBON P-346-LM	9677

Appliances

Custom Size Fridge

☐ Yes ☒ No

Valance Lighting

☐ Yes ☒ No

Microwave / Range Hood

☒ Yes ☐ No

Cooktop / Rangetop

☒ Yes ☐ No

Built in Wall Oven

☒ Yes ☐ No

Slide-in Range

☐ Yes ☒ No

Comment

KITCHEN UPPERS, FRIDGE & BUILT-IN ACCOMMODATION TO BE ANNEX DHGL: ARTICO GLOSS MWP \*\*\*\* BASE AND ISLAND TO BE ANNEX DHGL: EUROLINE 03 GLOSS CTR \*\*\*\* ~~KITCHEN BASE CABINETS AND ISLAND TO HAVE GRAINING INSTALLED VERTICALLY~~



### 2. Flooring

#### Selection

Foyer & Lower Hallway	*PALMA 12x24 MATTE: WHITE
Main Hall	*VINTAGE HANDSCRAPPED ENG. HARDWOOD 5" WHITE OAK: OTHELLO
Back Hall	
Breakfast	*VINTAGE HANDSCRAPPED ENG. HARDWOOD 5" WHITE OAK: OTHELLO
Laundry Room	REFLEX 13x13: WHITE
Kitchen	*VINTAGE HANDSCRAPPED ENG. HARDWOOD 5" WHITE OAK: OTHELLO
Powder Room	*ALPES 13x13: GREY
Main Bathroom	*COSTA MATTE 13x13: WHITE
Master Ensuite	*VOLKAS MATTE 12x24: WHITE - TO BE INSTALLED HORIZONTAL TO THE DOOR AND STACKED
Bathroom (If Applicable)	
Mud Room	
Lower Level Ensuite	REFLEX 13x13: OLIVE <span style="border: 1px solid red; border-radius: 50%; padding: 2px;">KL</span>
Living Room	*VINTAGE HANDSCRAPPED ENG. HARDWOOD 5" WHITE OAK: OTHELLO
Dining Room	*VINTAGE HANDSCRAPPED ENG. HARDWOOD 5" WHITE OAK: OTHELLO
Family / Great Room	
Den / Library / Study	
Basement Landing (If Applies)	
Lower Landing (If Applicable)	*VINTAGE HANDSCRAPPED ENG. HARDWOOD 5" WHITE OAK: OTHELLO
Upper Landing	*VINTAGE HANDSCRAPPED ENG. HARDWOOD 5" WHITE OAK: OTHELLO
Upper Hall	*VINTAGE HANDSCRAPPED ENG. HARDWOOD 5" WHITE OAK: OTHELLO
Master Bedroom	PAPILIO: SOFT CAMEO 17185
Bedroom #2	PAPILIO: SOFT CAMEO 17185
Bedroom #3	PAPILIO: SOFT CAMEO 17185
Bedroom #4	
Bedroom #5	
Lower Level Bedroom #3	PAPILIO: SOFT CAMEO 17185

Flooring Continued on Page 2

Initial: 

Page 1 of 3





## INTERIOR COLOUR SCHEME

Purchaser: Kenneth Chi-Heng Lo

Property: 39 Block 5 of Plan -

Telephone Res. / Bus: (647) 888-0238

Project: North 88 Developments Inc.

Decor Advisor: Nicole Soares

Model and Elevation: Orchid-Elev B


### 2. Flooring - Continued -

Upgrade Underpad	Type STANDARD	Area BEDROOMS
Carpet on Stairs	Capped	Runner - *Upgrade
Comment		

### 3. Plumbing Fixtures / Faucets

Kitchen	STD	Second Ensuite	STD	Powder Room	STD
Master Ensuite	STD			Other Room	
Main Bathroom	STD				
Comment					

### 4. Wall Tile

	Tile Selection	Listello	Insert	Insert Selection
Main Bathroom	ALPES 8x10: GREY	<input type="checkbox"/>	<input type="checkbox"/>	
Master Ensuite				
Tub Deck		<input type="checkbox"/>	<input type="checkbox"/>	
Tub Apron		<input type="checkbox"/>	<input type="checkbox"/>	
Tub Surround	REFLECTION 	<input type="checkbox"/>	<input type="checkbox"/>	
Shower Stall	ALPES 8x10: WHITE - ONT 2x2 MATTE: TENDER GREY	<input type="checkbox"/>	<input type="checkbox"/>	
Second Ensuite		<input type="checkbox"/>	<input type="checkbox"/>	
Lower Level Ensuite	NEW REEDS 8x10: SILVER - ONT 2x2: TENDER GREY	<input type="checkbox"/>	<input type="checkbox"/>	
Kitchen Backsplash		<input type="checkbox"/>	<input type="checkbox"/>	
Complete Backsplash		<input type="checkbox"/>	<input type="checkbox"/>	
Comment				

### 5. Fireplace

	Living Room			Family Room			Other Room - Specify		
	Purchased	As Per Plan	N/A	Purchased	As Per Plan	N/A	Purchased	As Per Plan	N/A
Fireplace Type	<input type="radio"/>	<input checked="" type="radio"/>	<input type="radio"/>	<input type="radio"/>	<input type="radio"/>	<input type="radio"/>	<input type="radio"/>	<input type="radio"/>	<input type="radio"/>
Mantle Type	STANDARD BLF50 ELECTRIC								
Over Mantle									
Colour / Stain									
Surround	STANDARD								
Hearth									
Comment									

Initial: KL

Page 2 of 3



Purchaser: Kenneth Chi-Heng Lo

Telephone Res. / Bus: (647) 888-0238

Decor Advisor: Nicole Soares

Property: 39 Block 5 of Plan -

Project: North 88 Developments Inc.

Model and Elevation: Orchid-Elev B

### 6. Trim Carpentry

Door Hardware STANDARD

Interior Trim STANDARD BASEBOARD & CASING

Comment

#### Interior Doors

☐ 2 Panel Arch Top

☒ 2 Panel Square Top

☐ 6 Panel



Initial for Door Style KC

### 7. Railings and Pickets

Railing Package STANDARD BASEBOARD & CASING

Railing Colour STAINED

Picket Colour FLAT BLACK METAL

Wood Stairs ☐ No ☒ Oak

Tread Colour STAINED

Comment

STAIRS TO BE STAINED TO MATCH \*VINTAGE HANDSCRAPPED ENG. HARDWOOD 5" WHITE OAK: OTHELLO AS MUCH AS POSSIBLE \*\*\* PURCHASER IS AWARE THAT THE STAIN WILL NOT BE A 100% TRUE MATCH AS STAIRS ARE STAINED ON SITE

### 8. Plaster Mouldings and Medallions

Foyer		
Main Hall		
Living Room		
Dining Room		
Family Room		

Kitchen/Breakfast		
Den/Library		
Lower Landing		

Comment

### 9. Wall Paint

SENATOR WHITE

Smooth Ceilings ☐ First Floor  
☐ First Floor incl. Second Floor Hall  
☐ First and Second Floor  
☒ Throughout  
☐ Not Applicable

Trim Paint SENATOR WHITE

### 10. Additional Comments

PURCHASER HAS UPGRADED TO SMOOTH CEILINGS THROUGHOUT

### 11. Disclaimers and Notes

- Colours of all materials are as close as possible to builder's selection, but not necessarily identical due to variances in manufacturing.
- Any extras listed above are null and void unless accompanied by a separate invoice/amendment. Said invoice must be paid in full.
- The Purchaser acknowledges that after Interior Colour Selection form is signed and dated, no further changes will be permitted other than re-selection due to unavailability. KC Purchaser's Initials
- The Purchaser acknowledges reading and accepting the "Senator Homes Décor Centre Disclaimers" form. This document contains other miscellaneous disclaimers.

This Interior Colour Selection is final and approved by:

Purchaser: [Signature]

Signature: [Signature] Date: FEB 16 2016

Vendor: [Signature]  
 North 88 Developments Inc.