

Kingsmen (Thames) Inc. / Havelock Corners (Kingsmen)

Lot/Unit: 65 Phase/Building: 4A Model/Floor Plan: Edward (3602) Elev B 4 Bed - 2+1 Bath

.Base Cabinets

Inv.4584	1 - To supply & install a base pie cut corner using the standard level of cabinetry for this model type in the kitchen.... see sketch # 1	
Line 58528	Note:	
lApr20 / 15Apr20		

.Miscellaneous

Inv.4584	1 - To supply & install the gas rough in and the 110 V electrical outlet for a future gas stove at stove area.	
Line 58518	Note:	
lApr20 / 15Apr20		

.Vanity Cabinets

Inv.4584	1 - To supply & install a bank of drawers in the master ensuite bathroom using the standard level of cabinetry for this model type.... see sketch # 2	
Line 58534	Note:	
lApr20 / 15Apr20		
Inv.4584	1 - To supply & install a bank of drawers in the main bathroom using the standard level of cabinetry for this model type.... see sketch # 2	
Line 58535	Note:	
lApr20 / 15Apr20		

Cabinetry

Inv.4584	1 - To supply & install deep fridge uppers with double doors with gable using the standard level of cabinetry for this model type...see sketch # 1	
Line 58526	Note: Fridge opening has been relocated, see sketch # 1 (this is a sep. upgrade)	
lApr20 / 15Apr20		
Inv.4584	1 - To supply & install an upper angled corner cabinet using the standard level of cabinetry for this model type... see sketch # 1	
Line 58527	Note:	
lApr20 / 15Apr20		

CABINETRY PANTRY

Inv.4584	2 - To supply & intal a PANTRY 66 CM DEEP by 24" + - wide (total of two door wide) IN LIEU OF UPPER - BASE - COUNTER DEPTH - PRICE IS PER FOOT - VIKING SERIES.. see ksetch # 1	
Line 58668	Note:	
lApr20 / 15Apr20		

Countertop

Inv.4584	1 - As per schedule "PE" : Vendor to include level 1, 2 cm granite or quartz in thekitchen, as per plan, in lieu of the included laminate counter tops. Selections to be made from builders standard samples.	
Line 58512	Note:	
lApr20 / 15Apr20		

Electrical

Kingsmen (Thames) Inc. / Havelock Corners (Kingsmen)

Lot/Unit: 65 Phase/Building: 4A Model/Floor Plan: Edward (3602) Elev B 4 Bed - 2+1 Bath

<div>Inv.4584</div> <div>Line 58519</div> <div>1Apr20 / 15Apr20</div>	<div>1 - Install the standard T.V. rough in in at approx. 66" + - up from the floor next to+ - the upgraded elec. outlet, centered + - to the F/P mantle in the great room.Install the other std T.V. rough in in the Master bedroom at approx. 66" + - up from floor</div> <div>Note: This is for Wall mount T.V. 's</div>	
<div>Inv.4584</div> <div>Line 58520</div> <div>1Apr20 / 15Apr20</div>	<div>1 - To supply & install the standard Phone rough in in the Great room, master bedroom and bedroom # 3... see sketch # 1 & # 2</div> <div>Note: Install the standard phone rough in at 66" + - up from the floor next to + - the upgraded elec. outlet and next to + - the T.V. rough in above the F/P in the great room</div>	
<div>Inv.4584</div> <div>Line 58521</div> <div>1Apr20 / 15Apr20</div>	<div>1 - To supply & install a receptacle at approx. 66 " + - up from the floor centered + - to the F/P mantle in the great room.... see sketch # 1</div> <div>Note: This is for a wall mount T.V.</div>	
<div>Inv.4584</div> <div>Line 58523</div> <div>1Apr20 / 15Apr20</div>	<div>1 - To supply & install an additional exterior light at the Portico, connected to the other standard exterior light, all on the same switch... see sketch # 1</div> <div>Note:</div>	
<div>Inv.4584</div> <div>Line 58524</div> <div>1Apr20 / 15Apr20</div>	<div>1 - Relcoate the std. ceiling light from the upper stair landing to the O.T.B. area on the second floor.... see sketch # 2</div> <div>Note:</div>	
<div>Inv.4584</div> <div>Line 58525</div> <div>1Apr20 / 15Apr20</div>	<div>1 - Reinforce the relocated light at the O.T.B. area on the second floor.... see sketch # 2</div> <div>Note:</div>	
<div>Inv.4584</div> <div>Line 58556</div> <div>1Apr20 / 15Apr20</div>	<div>1 - TO SUPPLY AND INSTALL AN ADDITIONAL BASIC RECEPTACLE (NOT DEDICATED)at approx.66" + - up from the floor in the master bed.next to the std.t.v.rough in</div> <div>Note: This is for a future wall mount T.V.</div>	
<div>Inv.4584</div> <div>Line 58557</div> <div>1Apr20 / 15Apr20</div>	<div>1 - TO SUPPLY AND INSTALL AN ADDITIONAL BASIC RECEPTACLE (NOT DEDICATED) at approx. 66" + - up from the floor in Bedroom # 4...see sketch # 2</div> <div>Note:</div>	
<div>Inv.4584</div> <div>Line 58548</div> <div>1Apr20 / 15Apr20</div>	<div>1 - To supply & install a T.V. rough in in in bedroom # 3... see sektch # 2</div> <div>Note:</div>	
<div>Inv.4584</div> <div>Line 58549</div> <div>1Apr20 / 15Apr20</div>	<div>1 - To supply & install a receptacle in the bedroom # 3 next to the upgrade T.V. rough in.... see sketch # 2</div> <div>Note:</div>	
<div>Inv.4584</div> <div>Line 58670</div> <div>1Apr20 / 15Apr20</div>	<div>1 - Relocate the std. exterior light at the garage... see sketch # 1</div> <div>Note: This exterior light will be connected to an additional upgraded exterior light at the garage, both on the standard switch.</div>	
<div>Inv.4584</div> <div>Line 58671</div> <div>1Apr20 / 15Apr20</div>	<div>1 - To supply & install an additional exterior light at the garage... see sketch # 1</div> <div>Note: This upgraded exterior light will be connected to the standard relocated exterior light at the garage, both will be connected to the standard switch</div>	

Kingsmen (Thames) Inc. / Havelock Corners (Kingsmen)

Lot/Unit: 65 Phase/Building: 4A Model/Floor Plan: Edward (3602) Elev B 4 Bed - 2+1 Bath

Inv.4584	1 - To SUPPLY AND INSTALL EXTRA CEILING BOX ROUGH IN CAPPED (DOES NOT INCLUDE SWITCH) over the breakfast bar in the kitchen... see sketch # 1	
Line 58760	Note: This cap will be connected to a sep. switch, switch sold sep.	
lApr20 / 15Apr20		
Inv.4584	1 - To supply & install an ADDITIONAL SINGLE POLE SWITCH connected to the upgraded capped ceiling electrical above breakfast bar in kitchen.	
Line 58762	Note:	
lApr20 / 15Apr20		

Hardwood

Inv.4584	1 - As per schedule "PE" : Vendor to allow purchaser to select any stain from vendors standard samples for main floor hardwood and staircase and rail as per plan and a included per schedule A.	
Line 58513	Note:	
lApr20 / 15Apr20		

Heating And Air Conditioning

Inv.4584	1 - As per schedule "PE" : Vendor to install capped gas line (rough in only) at rear of home for future BBQ location. Location to be finalized at vendors sole discretion.	
Line 58510	Note:	
lApr20 / 15Apr20		
Inv.4584	1 - As per schedule "PE" : Vendor to supply & install air conditioning unit, sized accordingly, from vendors standard samples.	
Line 58511	Note:	
lApr20 / 15Apr20		

MISCELLANEOUS

Inv.4584	1 - To supply & install the OPTIONAL WAFFLE ceiling in the great room.... see sketch # 1	
Line 58555	Note: NO CORNICE MOULDING WILL BE SUPPLIED OR INSTALLED.	
lApr20 / 15Apr20		

EXTRAS AS PER OFFER

Note:	
-------	--

SCHEDULE "B-1"

Floor Plan

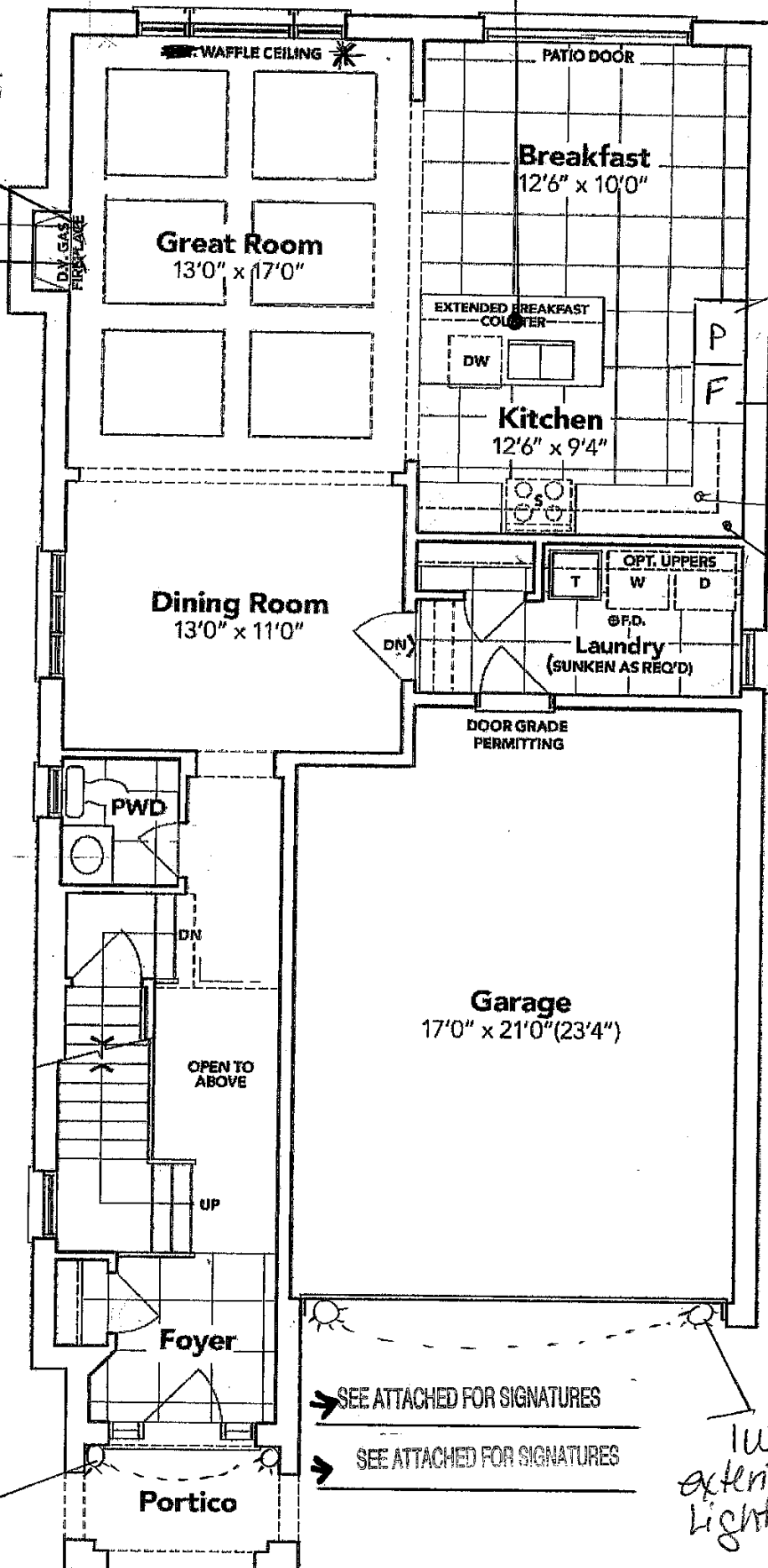
Lot 65
Phase 4A
Model: Edward (3602) Elev B 4 Bed - 2+1 Bath
Standard

Capped elec.
sup. Switch

Sketch #1

All 3 items @
66" t up from
floor

TV Phone.



2 door wide
approx. 24"

deep Fridge
uppers w/ gable

Base Pie Lot
corner

Upper Angled
corner

Two exterior lights

Two exterior lights

GROUND FLOOR EL. B

The floor plans and elevations shown are pre-construction plans and may be revised or improved as necessitated by architectural controls and the construction process. The measurements adhere to the rules and regulations of the TARION Warranty Corporation's official method for the calculation of floor area. Materials, specifications and floor plans are subject to change without notice. All house renderings are artist's concept only. Actual usable floor space may vary from the stated floor area. All options shown are upgrades. E. & O. E.

sketch
#2



Initials:

SS

22