

Kingsmen (Thames) Inc. / Havelock Corners (Kingsmen)

Lot/Unit: 10 Phase/Building: 4A Model/Floor Plan: John (4201) Elev B 4 Bed - 2+1 Bath

CABINETRY

Inv.4621	1 - Purchaser has uppgaded the hood fan in the kitchen... see spec's...	
Line 59038	Note:	
28Apr20 / 1Jun20		

CABINETRY APPLIANCE - FRIDGE

Inv.4621	1 - To supply & install te 66CM DEEP FRIDGE ENCLOSURE - COUNTER DEPTH WITH - 1 WALL - 1 66CM DEEP GABLE AND 1 66CM DEEP CABINET - THIS IS NOT A ZERO CLEARANCE ENCLOSURE. STANDARD HEIGHTS AND WIDTHS WILL BE USED. - CLASSIC SERIES	
Line 59042	Note: in the kitchen see sketch # 1	
28Apr20 / 1Jun20		

CABINETRY BASE CABINETS

Inv.4621	1 - To supply & install the BASE PIE CUT CORNER - CLASSIC SERIES in the kitchen... see sketch # 1	
Line 59043	Note:	
28Apr20 / 1Jun20		
Inv.4621	1 - To supply & intall the POTS & PANS DRAWER - MINIMUM 60 CM - MAXIMUM 90 CM - SIZE SUBJECT TO FLOOR PLAN - CLASSIC SERIES in the kitchen... see sketch # 1	
Line 59044	Note:	
28Apr20 / 1Jun20		

CABINETRY HOOD FANS

Inv.4621	1 - HOOD FAN - PRO COLLECTION (SCB72230) WALL MOUNT RANGE HOOD WITH 650 CFM FAN - 30 INCH	
Line 59036	Note:	
28Apr20 / 1Jun20		

CABINETRY VANITY

Inv.4621	1 - To supply & install the VANITY BANK OF DRAWERS - MAX. WIDTH 55CM - CLASSIC SERIES in the master ensuite... see sketch # 2	
Line 59039	Note:	
28Apr20 / 1Jun20		
Inv.4621	1 - To supply & install the VANITY BANK OF DRAWERS - MAX. WIDTH 55CM - CLASSIC SERIES in the main bathroom... see sketch # 2	
Line 59040	Note:	
28Apr20 / 1Jun20		

CABINETRY WALL AND HUTCH

Inv.4621	1 - To supply & install the UPPER ANGLE CORNER PER UNIT - CLASSIC SERIES in the kitchen... see sketch # 1	
Line 59041	Note:	
28Apr20 / 1Jun20		

ELECTRICAL



CONSTRUCTION SUMMARY

Kingsmen (Thames) Inc. / Havelock Corners (Kingsmen)

Lot/Unit: 10 Phase/Building: 4A Model/Floor Plan: John (4201) Elev B 4 Bed - 2+1 Bath

Inv.4621	1 - To supply & install the standard T.V. rough in in the master bedroom and great room... see sketch # 1 & # 2	
Line 59028	Note:	
28Apr20 / 1Jun20		
Inv.4621	1 - To supply & install the standard Phone rough in in the kitchen, master bedroom and bedroom #4...see sketch # 1 & # 2	
Line 59029	Note:	
28Apr20 / 1Jun20		
Inv.4621	1 - To SUPPLY AND INSTALL AN ADDITIONAL BASIC RECEPTACLE (NOT DEDICATED) at approx. 66 " + - up from the floor and centered + - to the F/P mantle	
Line 59030	Note: in the great room... see sketch # 1	
28Apr20 / 1Jun20		
Inv.4621	1 - To SUPPLY AND INSTALL CONDUIT FOR TV OVER THE FIREPLACE – TERMINATED IN SAME ROOM at approx. 66 " +- up from the floor and terminated next to the standard T.V. rough in in the great room... see sketch # 1	
Line 59031	Note:	
28Apr20 / 1Jun20		

HEATING AND AIR CONDITIONING

MISCELLANEOUS

Inv.4621	1 - To supply & install a capped gas rough in and a 110V elec. outlet for a future gas stove.	
Line 59027	Note:	
28Apr20 / 1Jun20		

PLUMBING

Inv.4621	1 - To supply & install the MIROLIN " BROOKE" free standing tub in lieu of the std. free standing tub in the master ensuite... see spec's	
Line 59033	Note:	
28Apr20 / 1Jun20		

EXTRAS AS PER OFFER

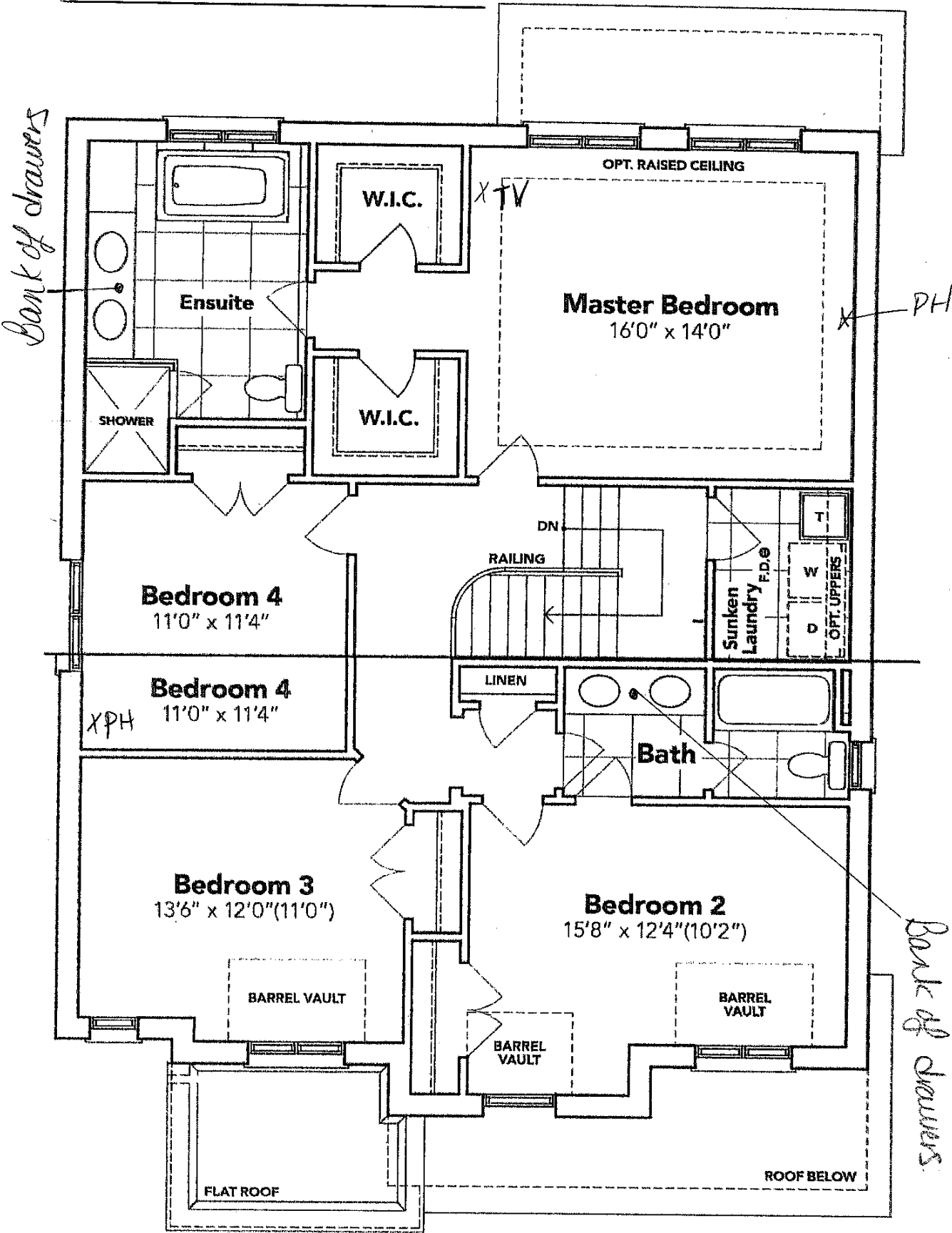
VENDOR TO INSTALL CAPPED GAS LINE (ROUGH-IN ONLY) AT REAR OF HOME FOR FUTURE BBQ LOCATION. LOCATION TO BE FINALIZED AT VENDORS SOLE DISCRETION. Worksheet Note:	
VENDOR TO SUPPLY & INSTALL AIR CONDITIONING UNIT, SIZED ACCORDINGLY, FROM VENDORS STANDARD SAMPLES. Worksheet Note:	

SCHEDULE "B-1"
Floor Plan

Lot 10
Phase 4A
Model: John (4201) Elev B 4 Bed - 2+1 Bath
Corner Lot, Standard

SEE ATTACHED FOR SIGNATURES

Sketch #2



PART. SECOND FLOOR EL. B

The floor plans and elevations shown are pre-construction plans and may be revised or improved as necessitated by architectural controls and the construction process. The measurements adhere to the rules and regulations of the TARION Warranty Corporation's official method for the calculation of floor area. Materials, specifications and floor plans are subject to change without notice. All house renderings are artist's concept only. Actual usable floor space may vary from the stated floor area. All options shown are upgrades. E. & O. E.

LOT: 10 Havelock Corners PH: 4A

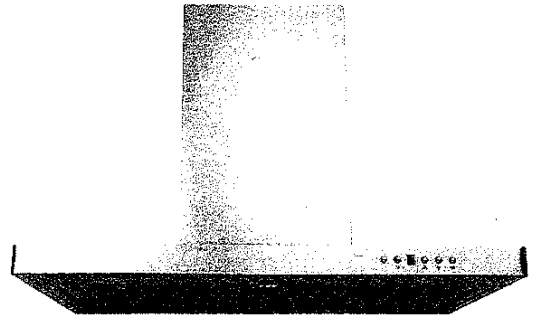
RE: UPG. KITCHEN HOOD FAN

Specifications



SEE ATTACHED FOR SIGNATURES

Air Flow Volume: 650 CFM
Electrical Connection: 120V/60Hz
Power Consumption: 240 Watts
Current: 2.0 Amps
Fan Speed: 1599 RPM
Finishes: Stainless Steel
Duct: 6" Round
Knock-out: 6" Round - Top Only
Dimensions: Width: 30"/36"
Height: 44 1/2"
Depth: 19 3/4"
Noise Level: Min. 2 Sones
Max. 7 Sones



SCB722 - Baffle Filter



Ordering Model Chart

Model	Colour	Knock-out	Duct	Size	Filter	CFM
SCB72230	Stainless Steel	6"	6" Round	30"	Baffle	650
SCB72236	Stainless Steel	6"	6" Round	36"	Baffle	650

Notes

Cyclone[®]

LOT: 10 HAVELOCK CORNERS PH: 4A

RE: UPG. FREESTANDING TUB IN MASTER ENS.



SEE ATTACHED FOR SIGNATURES



Brooke™ | 1

Brooke™

Categories: Acrylic Freestanding

DESCRIPTION

68" Freestanding Bath
SKU #: CF2002

FEATURES

- Installation friendly two piece design
- Accepts deck mounted faucet
- Includes a chrome integral pop up drain and rectangular overflow
- ~~Includes a chrome integral pop up drain and rectangular overflow~~
- Centre drain
- Includes levelling feet
- Available in White Only



DIMENSIONS

68" x 36" x 23"

OPTIONS & ACCESSORIES

SOAKER

CF2002