



CONSTRUCTION SUMMARY

Kingsmen (Thames) Inc. / Havelock Corners (Kingsmen)

Lot/Unit: 215 Phase/Building: 4A Model/Floor Plan: Spencer (4204) Elev C 4 Bed - 4+1 Bath

CABINETRY

Inv.5078	1 - To accomodate for the 36" chimney hoodfan	
Line 66368	Note:	
11Aug21 / 11Aug21		
Inv.5078	1 - To increase stove opening from 30" to 36"	
Line 66384	Note:	
11Aug21 / 11Aug21		

CABINETRY APPLIANCE - FRIDGE

Inv.5078	1 - To supply and install a 66CM DEEP FRIDGE ENCLOSURE - COUNTER DEPTH WITH - 1 WALL - 1 66CM DEEP GABLE AND 1 66CM DEEP CABINET WITH FLIP UP DOOR -THIS IS NOT A ZERO CLEARANCE ENCLOSURE. STANDARD HEIGHTS AND WIDTHS WILL BE USED. CLASSIC SERIES.see sketch #1	
Line 66385	Note: See fridge spec's attached.	
11Aug21 / 11Aug21		

CABINETRY BASE CABINETS

Inv.5078	1 - To supply and install an additional BANK OF DRAWERS CABINET - CLASSIC SERIES.. see sketch #1	
Line 66388	Note:	
11Aug21 / 11Aug21		

CABINETRY HOOD FANS

Inv.5078	1 - To supply and install HOOD FAN - PRO COLLECTION (SCB72236) WALL MOUNT RANGE HOOD WITH 650 CFM FAN - 36 INCH - in the kitchen, in lieu of the standard.. see spec's	
Line 66367	Note:	
11Aug21 / 11Aug21		

CABINETRY MICROWAVE OVEN STOVE COOKTOP

Inv.5078	1 - To supply and install a BUILT-IN TALL APPLIANCE CABINET WITH DRAWER - S BELOW FOR PANEL-MOUNT - PROUD - OR TRIM KIT INSTALLATIONS - TRIM KIT REQUIRED - SUPPLY ALL SPECS AND INSTALLATION GUIDES - COUNTER DEPTH - CLASSIC SERIES.. see sketch #1	
Line 66386	Note:	
11Aug21 / 11Aug21		
Inv.5078	1 - To supply and install accomodations for the future 36" wide COOKTOP CABINET WITH FALSE TOP DRAWER AND POTS AND PANS DRAWERS BELOW - SUPPLY SPECS - LAMINATE COUNTER SHOULD BE CLEAN CUT - SEE 01F - CLASSIC SERIES.. see sketch #1	
Line 66387	Note:	
11Aug21 / 11Aug21		

CABINETRY PANTRY

Inv.5078	1 - To supply & install a PANTRY 66 CM DEEP IN LIEU OF UPPER - BASE - COUNTER DEPTH - CLASSIC SERIES in the kitchen... see sketch # 1	
Line 66389	Note:	
11Aug21 / 11Aug21		

Kingsmen (Thames) Inc. / Havelock Corners (Kingsmen)

Lot/Unit: 215 Phase/Building: 4A Model/Floor Plan: Spencer (4204) Elev C 4 Bed - 4+1 Bath

CABINETRY VANITY

Inv.5078	2 - To supply & install a VANITY LOWER DRAWER - CLASSIC SERIES in Ensuite #2's bathroom... see sketch #2	
Line 66390	Note:	
11Aug21 / 11Aug21		
Inv.5078	1 - To supply & install a VANITY BANK OF DRAWERS - CLASSIC SERIES in the master ensuite... see sketch # 2	
Line 66392	Note:	
11Aug21 / 11Aug21		
Inv.5078	1 - To INCREASE VANITY TO KITCHEN HEIGH 90CM HIGH - MAINTAINS VANITY DEPTH - CLASSIC SERIES in the powder room.	
Line 66393	Note:	
11Aug21 / 11Aug21		
Inv.5078	1 - To INCREASE VANITY TO KITCHEN HEIGH 90CM HIGH - MAINTAINS VANITY DEPTH - CLASSIC SERIES in ensuite #2....see sketch # 2	
Line 66394	Note:	
11Aug21 / 11Aug21		
Inv.5078	1 - To INCREASE VANITY TO KITCHEN HEIGH 90CM HIGH - MAINTAINS VANITY DEPTH - CLASSIC SERIES in the master ensuite....see sketch # 2	
Line 66395	Note:	
11Aug21 / 11Aug21		

COUNTER TOP

Inv.5078	1 - To accomodate the kitchen countertop for the 36" cooktop.. see spec's	
Line 66398	Note:	
11Aug21 / 11Aug21		

ELECTRICAL

Inv.5078	2 - To supply & install a CAT 5 rough in in bedroom #2 & #4... see sketch # 2	
Line 66397	Note:	
11Aug21 / 11Aug21		
Inv.5078	1 - To supply and install the standard T.V Rough-in, in the Great Room and Master Bedroom.. see sketch #1 and #2	
Line 66363	Note: Install t.v. rough in in the great room at approx 66" + - up from the floor, centered + - to the F/P mantle	
11Aug21 / 11Aug21		
Inv.5078	1 - To supply and install the standard Phone (CAT 5) rough-in, in the Great Room, Master Bedroom and Media Niche.. see sketch #1 and #2	
Line 66364	Note: Install Phone (CAT 5) rough in in the great room at approx 66" + - up from the floor, centered + - to the F/P mantle	
11Aug21 / 11Aug21		
Inv.5078	1 - To SUPPLY AND INSTALL AN ADDITIONAL BASIC RECEPTACLE (NOT DEDICATED) centered +- over the F/P Mantle at approx. 66"+- up from the floor in the Great Room...see sketch #1	
Line 66365	Note:	
11Aug21 / 11Aug21		

Kingsmen (Thames) Inc. / Havelock Corners (Kingsmen)

Lot/Unit: 215 Phase/Building: 4A Model/Floor Plan: Spencer (4204) Elev C 4 Bed - 4+1 Bath

Inv.5078	1 - To supply and install a RG6 CABLE Rough-in, in the Media Niche area on the second floor.. see sketch #2	
Line 66370	Note:	
11Aug21 / 11Aug21		
Inv.5078	1 - To SUPPLY AND INSTALL EXTRA CEILING BOX ROUGH IN CAPPED (ON A SEPARATE SWITCH) over the breakfast bar in the kitchen.. see sketch #1	
Line 66371	Note:	
11Aug21 / 11Aug21		
Inv.5078	1 - To relocate the standard light from the 2nd floor landing to the open to below area.. see sketch #2	
Line 66372	Note:	
11Aug21 / 11Aug21		
Inv.5078	1 - To SUPPLY AND INSTALL EXTRA 240 STOVE PLUG for future Microwave/wall oven.. see spec's	
Line 66379	Note:	
11Aug21 / 11Aug21		
Inv.5078	1 - to SUPPLY AND INSTALL REINFORCING FOR A CEILING light at O.T.B. on the second floor... see sketch # 2	
Line 66380	Note:	
11Aug21 / 11Aug21		

HEATING AND AIR CONDITIONING

Inv.5078	1 - As per Schedule "PE": Vendor to supply and install air conditioning unit, sized accordingly, from Vendors Standard Samples	
Line 66359	Note:	
11Aug21 / 11Aug21		

HVAC

Inv.5078	1 - As Per Schedule "PE": Vendor to install capped gas line (Rough-in ONLY) at rear of home for future BBQ location. Location to be finalized at vendors sole discretion.	
Line 66357	Note:	
11Aug21 / 11Aug21		
Inv.5078	1 - As per Schedule "PE": Vendor to install gas line (Rough-in ONLY) to kitchen in at stove location (As per Plan) to include 110V Code requirement.	
Line 66358	Note:	
11Aug21 / 11Aug21		
Inv.5078	1 - To supply and install a humidifer	
Line 66362	Note:	
11Aug21 / 11Aug21		

PLUMBING

Inv.5078	1 - To supply and install the mirolin brooke free standing tub, in the master ensuite in lieu of the standard.. see spec's	
Line 66360	Note:	
11Aug21 / 11Aug21		

Kingsmen (Thames) Inc. / Havelock Corners (Kingsmen)

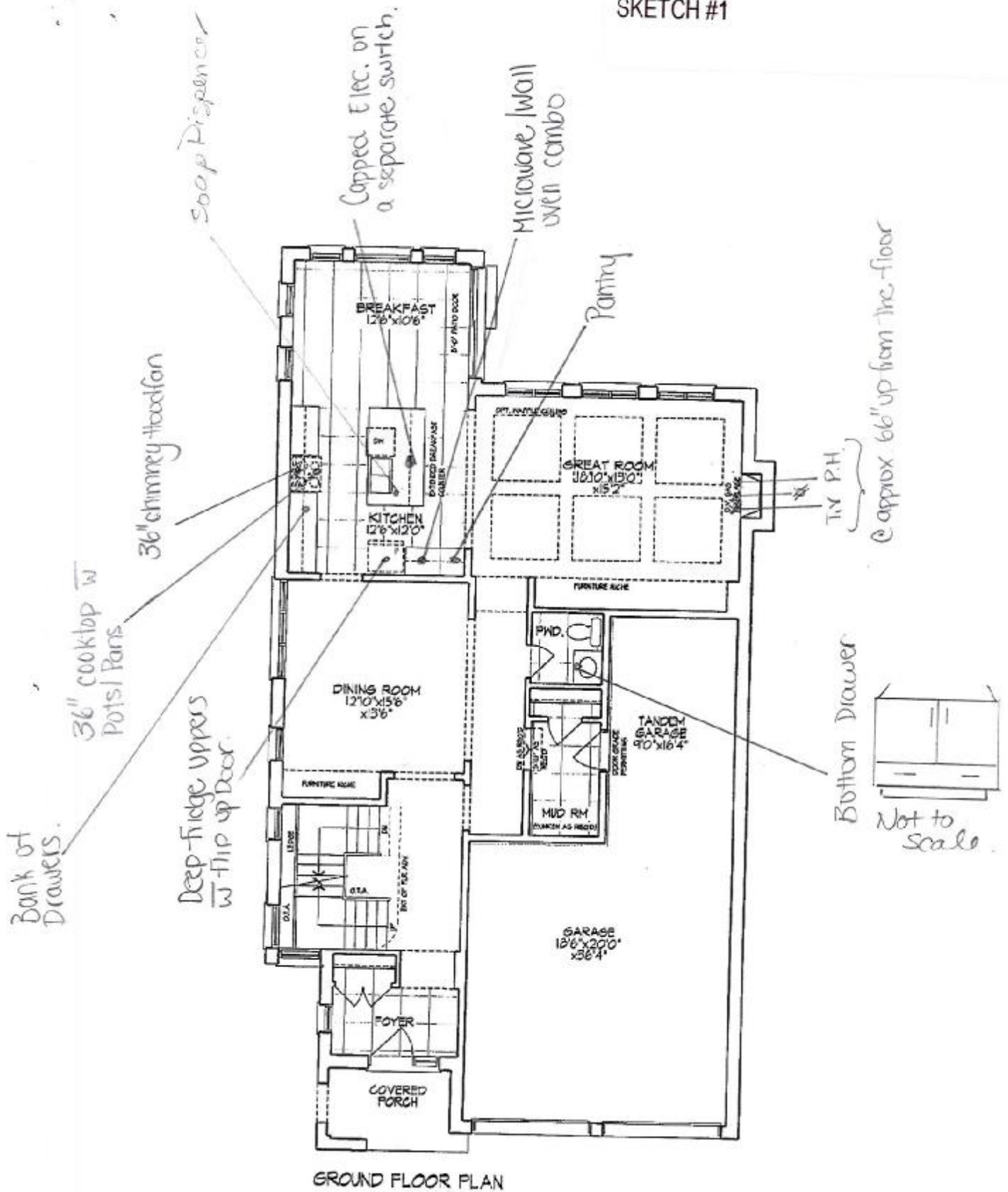
Lot/Unit: 215 Phase/Building: 4A Model/Floor Plan: Spencer (4204) Elev C 4 Bed - 4+1 Bath

Inv.5078 Line 66361 11Aug21 / 11Aug21	1 - To raise the toe tester in bedroom #2 shower to approx. 28" +- from unfinished floor Note:	
Inv.5078 Line 66381 11Aug21 / 11Aug21	1 - To supply a WATERLINE ROUGH-IN TO THE FRIDGE LOCATION (NO HOOK UP) Note:	
Inv.5078 Line 66382 11Aug21 / 11Aug21	1 - To supply and install a KITCHEN SINK - BLANCO QUATRUS U2 - MODEL 401247 in lieu of the standard kitchen sink.. see spec's Note:	
Inv.5078 Line 66383 11Aug21 / 11Aug21	1 - To supply and install a KITCHEN SOAP DISPENSER - MOEN CHROME - MODEL 3942.. see spec's Note:	

EXTRAS AS PER OFFER

PURCHASER ACKNOWLEDGES THIS HOME WILL RECIEVE A CORNER LOT UPGRADE TO THE ELEVATION. SUCH UPGRADE WILL BE DESIGNED AND APPROVED BY THE BUILDER AND/OR THEIR ARCHITECTS AND IS NOT SUBJECT TO CHANGE OR MODIFICATION BY THE PURCHASER. Worksheet Note:	
5 FREE APPLIANCES ? STAINLESS STEEL FRONT - FRIDGE: STOVE AND DISHWASHER. WHITE WASHER AND DRYER (SUPPLIED ONLY, NOT INSTALLED, FROM BUILDERS STANDARD LINE). A BAD BOY APPLIANCES VOUCHER WILL BE GIVEN BY OUR DECOR CONSULTANT AT THE TIME OF BOOKING YOUR C Worksheet Note:	
VENDOR TO INSTALL CAPPED GAS LINE (ROUGH-IN ONLY) AT REAR OF HOME FOR FUTURE BBQ LOCATION. LOCATION TO BE FINALIZED AT VENDORS SOLE DISCRETION. Worksheet Note:	
VENDOR TO INSTALL GAS LINE (ROUGH-IN ONLY) TO KITCHEN IN AT STOVE LOCATION (AS PER PLAN) TO INCLUDE 110V CODE REQUIREMENT. Worksheet Note:	
VENDOR TO SUPPLY & INSTALL AIR CONDITIONING UNIT, SIZED ACCORDINGLY, FROM VENDORS STANDARD SAMPLES. Worksheet Note:	

THAMES 4A: LOT 215
SKETCH #1



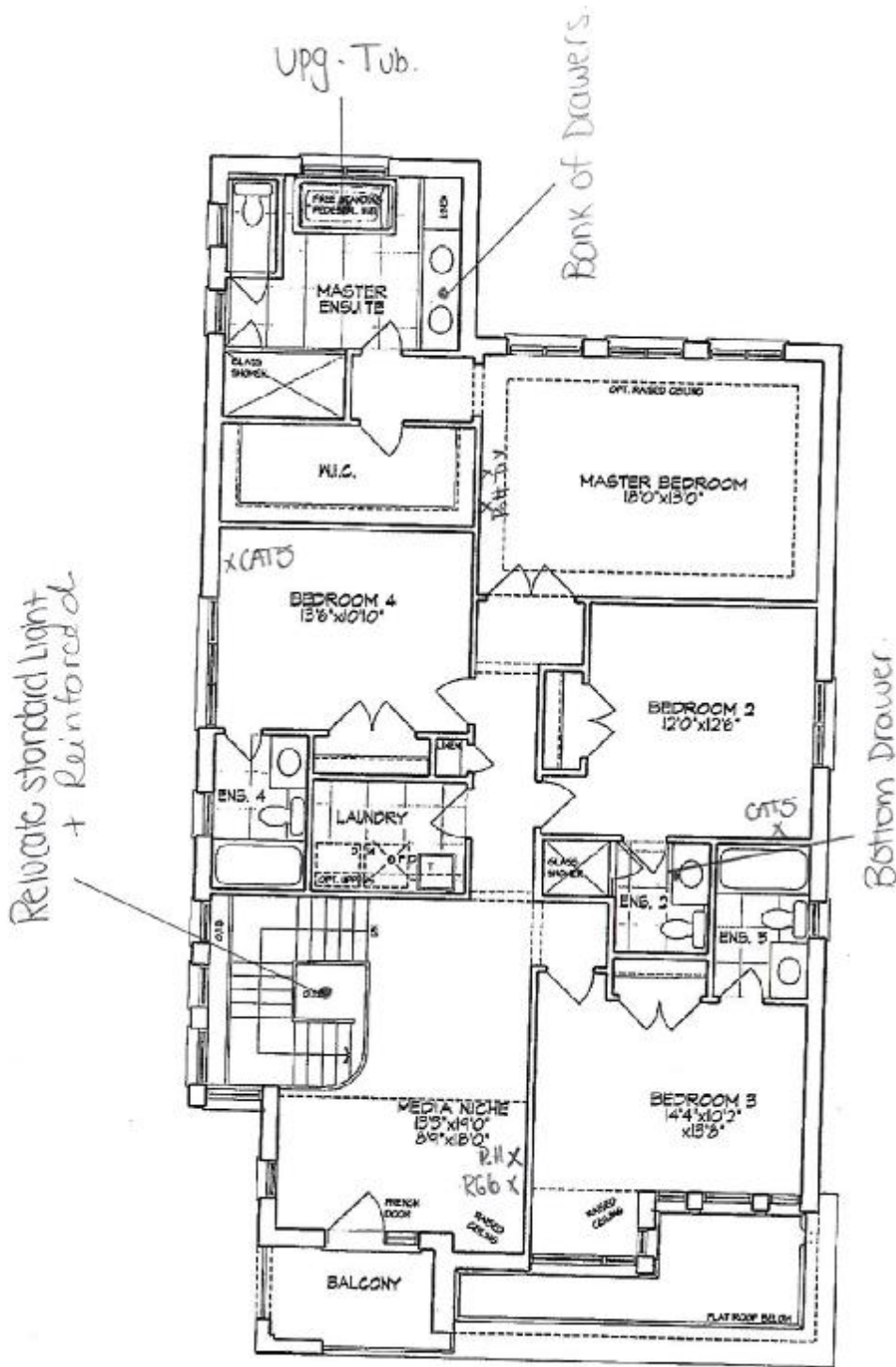
Unit 4204 - El. C3
SPENCER - CORNER
Lot 215 Phase 4A

Materials, specifications, and floor plans are subject to change without notice.
All renderings are artist conceptions. All floor plans are approximate dimensions.
Actual usable floor space may vary from the stated floor area, E. & E.O.

Schedule. B' 1/3

Handwritten signature/initials

THAMES 4A: LOT 215
SKETCH #2



SECOND FLOOR PLAN

Unit 4204 - El. C3
SPENCER - CORNER

LOT 215 Phase 4A

Materials, specifications, and floor plans are subject to change without notice. All renderings are artist conceptions. All floor plans are approximate dimensions. Actual usable floor space may vary from the stated floor area. E. & E.O.

+ Paul Dwyer

+ Janet L.

Schedule B1 7/3
(12) (TP)

SKETCH #3



Unit 4204 - El. C3
SPENCER - CORNER

LOT 215 Phase 4A

Materials, specifications, and floor plans are subject to change without notice.
All renderings are artist conceptions. All floor plans are approximate dimensions.
Actual usable floor space may vary from the stated floor area, \pm E.O.

Schedule B1 3/3

1. Paul Dohy

* Group 1

THAMES 4A: LOT 215
RE: UPG. 36" CHIMNEY HOODFAN

Specifications

Air Flow Volume: 650 CFM
Electrical Connection: 120V/60Hz
Power Consumption: 240 Watts
Current: 2.0 Amps
Fan Speed: 1599 RPM
Finishes: Stainless Steel
Duct: 6" Round
Knock-out: 6" Round - Top Only
Dimensions: Width: 30"/36"
Height: 44 1/2"
Depth: 19 3/4"
Noise Level: Min. 2 Sones
Max. 7 Sones



SCB722 - Baffle Filter



Ordering Model Chart

Model	Colour	Knock-out	Duct	Size	Filter	CFM
SCB72230	Stainless Steel	6"	6" Round	30"	Baffle	650
SCB72236	Stainless Steel	6"	6" Round	36"	Baffle	650

Notes + Panel + install



THAMES 4A: LOT 215
RE: UPG. KITCHEN SINK & SOAP
DISPENSER



QUATRUS U2

MODEL: 401247

German engineered with 304 series, 18-gauge stainless steel

Zero-radius corners; X-pattern drain groove

Double bowl configuration for easy multi-tasking

18/10 chrome-ni-plated exterior for exceptional looks, durability and strength

Undermount installation

Minimum cabinet size: 36"



Transitional Soap or Lotion Dispenser

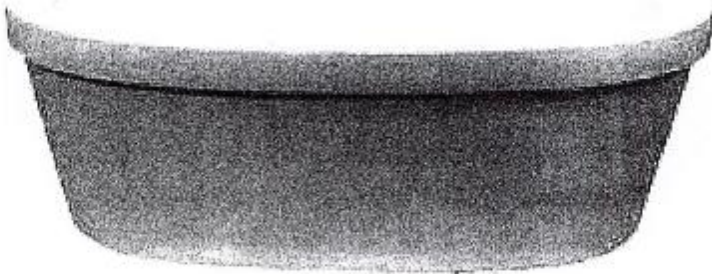
Model 3942

Chrome

+ Perry + James

THAMES 4A: LOT 215
RE: UPG. MASTER ENSUITE TUB

Free Standing Tub



Mirolin Brooke CF2002
68x36x23

- Acrylic Bath
- 2PC Construction
- End Drain Application
- F2 Drain Assembly



+ Paddy + James

NQ70M7770DS

30" Microwave Combination Wall Oven

THAMES 4A: LOT 215

RE: 30" MICROWAVE COMBO WALL OVEN
SPEC'S



Signature Features

Steam Cook (Oven)

- Delivers moisture at precise times for a crisp, browned outside and tender inside.

Speed Cook (Microwave)

- Cook food faster and more evenly by using power convection.

Flex Duo™ (Oven)

- Cook two dishes at different temperatures simultaneously with the Smart Divider.

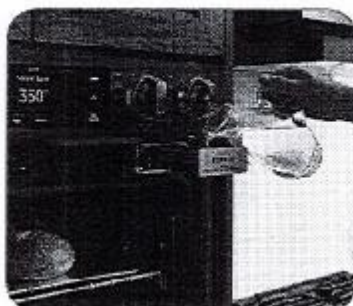
Available Colors



Stainless Steel (shown)



Black Stainless Steel



Steam Cook



Flex Duo™

Features

- Digital-Analog Controls
- 1.9/5.1 cu. ft. Capacity
- Hybrid Clean and Self-Clean (Oven)
- Gourmet Cook (Oven)
- Dual Convection (Oven)
- Wi-Fi Connectivity
- Wi-Fi Enabled Temperature Probe (Oven)
- LED Spotlights (Oven)
- Easy View Window
- 3 Heavy-Duty Racks Including a Gliding Rack (Oven)
- Soft-Close Door (Oven)
- Ceramic Plate (Microwave)
- Rapid Preheat (Oven)
- Auto Latch Microwave Door
- 6 Oven Modes including Steam Bake and Steam Roast
- Blue LED Illuminated Knobs
- Broil Element
- Smart Control Key (Oven)
- 6 Rack Positions (Oven)
- Drop-Down Door Design
- LCD Display

Convenience

- Hidden Heating Element (Oven)
- Sabbath Mode (Oven)
- Delay Start (Oven)
- Proofing (Oven)
- Warming Mode (Oven)
- Kitchen Timer
- Child Safety Lock
- Convection Conversion

+ Paul Dy + [Signature]

NQ70M7770DS

30" Microwave Combination Wall Oven

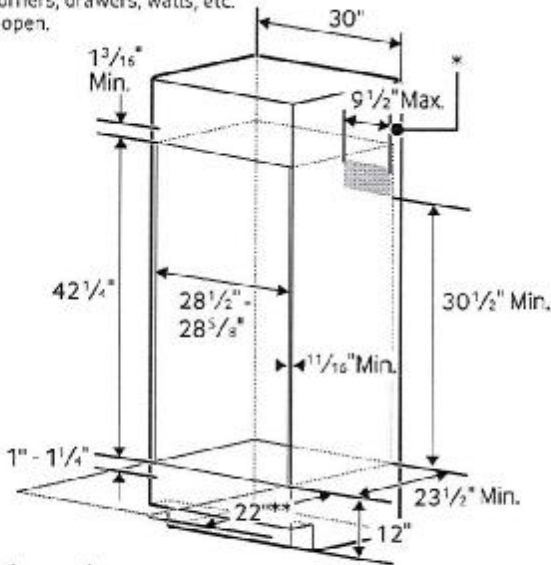
THAMES 4A: LOT 215
RE: 30" MICROWAVE COMBO WALL OVEN
SPEC'S

Cabinet Dimensions

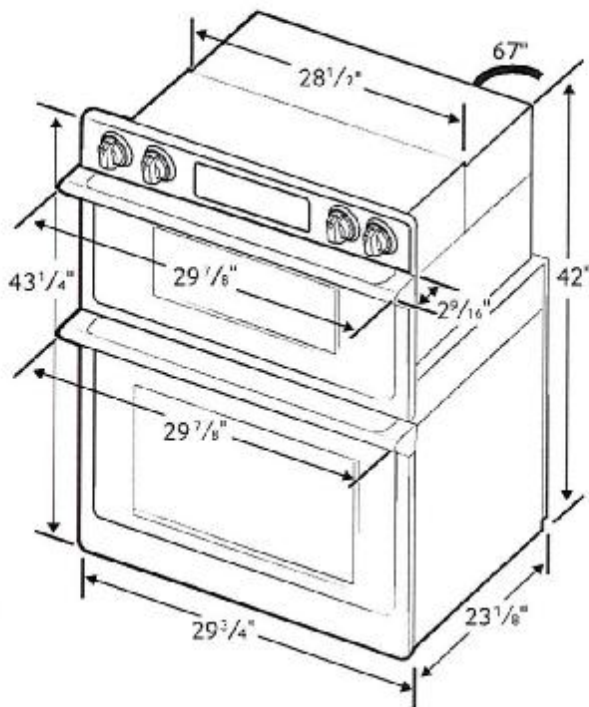
Combination Oven Installed in Cabinet

* Junction Box

** Allow a minimum of 22" for clearance to adjacent corners, drawers, walls, etc. when door is open.



Product Dimensions



Total Capacity: 1.9/5.1 cu. ft.

- Microwave: 1.9 cu. ft.
- Wall Oven: 5.1 cu. ft. total, 2.8/2.2 cu. ft.
- Hidden Bake Element
- Bake: 175°F–550°F
- Convection Bake: 175°F–550°F
- Convection Roast: 175°F–550°F
- Broil: Low-High
- Steam Bake: 230°F–550°F
- Steam Roast: 230°F–550°F
- Proofing
- Sabbath Mode

Warranty

One (1) Year All Parts and Labor
Ten (10) Years Parts Warranty for Magnetron

Product Dimensions & Weight (WxHxD)

Outside (Max) Combination Oven Dimensions:
29 7/8" x 43 1/4" x 25 11/16"

Combination Oven Cut-Out Dimensions:
28 1/2" x 42 1/4" x 23 1/2"

Weight: 119 lbs.

Shipping Dimensions & Weight (WxHxD)



Dimensions:
33 5/8" x 48 5/16" x 29 51/64"

Weight: 132.5 lbs.

Color	Model #	UPC Code
Stainless Steel	NQ70M7770DS	887276195186
Black Stainless Steel	NQ70M7770DG	887276195162

RATING	
240V	9.5 kW
208V	7.2 kW
BREAKER SIZE	
240V	40 Amps
208V	40 Amps

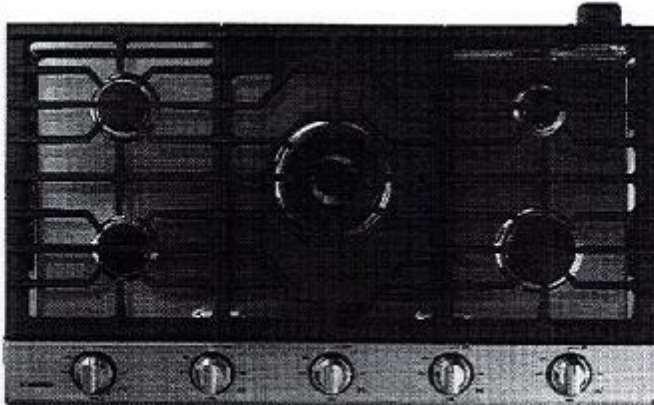
Actual color may vary. Design, specifications, and color availability are subject to change without notice. Non-metric weights and measurements are approximate.
©2017 Samsung Electronics America, Inc. 85 Challenger Road, Ridgefield Park, NJ 07660. Tel: 800-SAMSUNG. samsung.com. Samsung is a registered trademark of Samsung Electronics Co. Ltd.

+  + 

NA36N7755TS

36" Gas Cooktop

THAMES 4A: LOT 215
RE: 36" GAS COOKTOP SPEC'S



Signature Features

22K True Dual-Power Burner

- Two independent heating burners offer intense heat and precise control to quickly boil water or temper chocolate.

Analog Controls with Digital Wi-Fi and Bluetooth® Technology

- The ultimate combination of analog comfort and digital technology delivers exceptional cooking performance.

Cast Iron Griddle

- Cook breakfast, grill sandwiches, or sauté vegetables on the removable griddle.

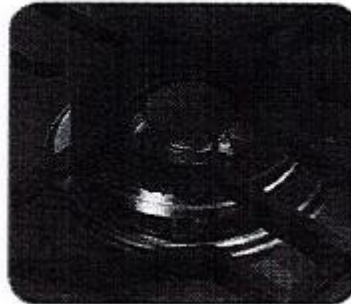
Available Colors



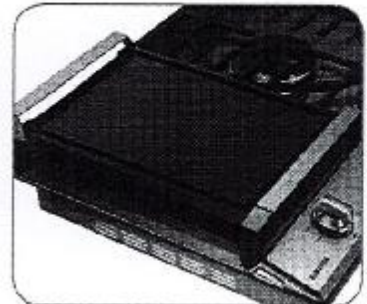
Stainless Steel (shown)



Fingerprint Resistant
Black Stainless Steel



22K True Dual-Power Burner



Cast Iron Griddle

Features

- Bluetooth® Connected to Hood
- Blue LED Lights
- Wi-Fi Connectivity
- Powerful Cooktop
 - Right Front: 13K BTU
 - Left Front: 9.5K BTU
 - Right Rear: 5K BTU
 - Left Rear: 9.5K BTU
 - Center: True Dual, 22K BTU (Brass)

- Cast Iron 3-Piece Grates
- Sealed Burners
- Burner On/Off Monitoring
- ADA Compliant

Convenience

- Wok Grate
- LP Conversion Kit



ADA Compliant

Paul Ray + *James*

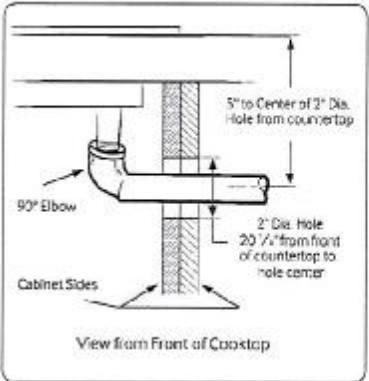
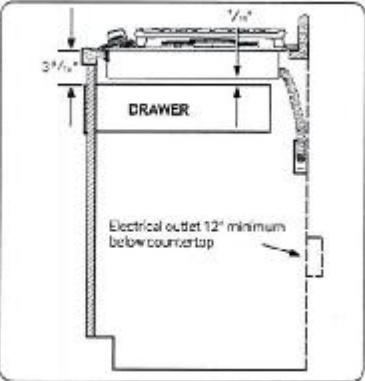
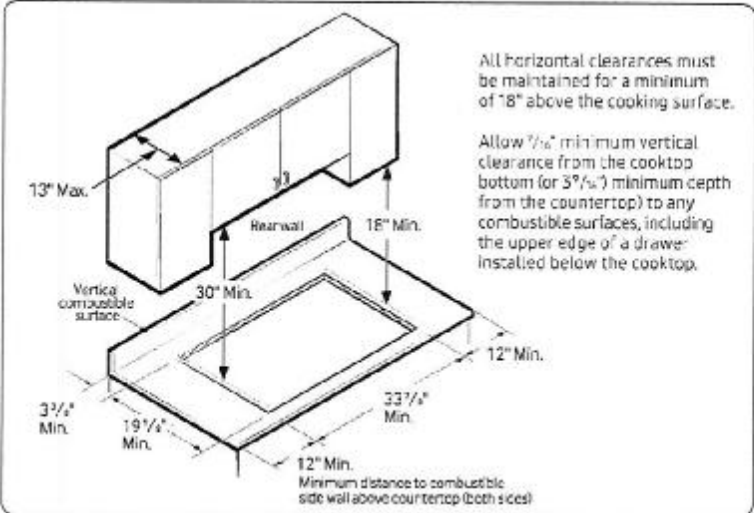
NA36N7755TS

36" Gas Cooktop

THAMES 4A: LOT 215
RE: 36" GAS COOKTOP SPEC'S

Installation Requirements

Countertop cut-out and minimum clearance dimensions:



Total Power (BTU)

59K

Power Source

120V / 60 Hz / 1A

Gas Cooktop (BTU)

- Right Front: 13K
- Left Front: 9.5K
- Right Rear: 5K Simmer
- Left Rear: 9.5K
- Center: 22K (True Dual)

Warranty

One (1) Year All Parts and Labor

Product Dimensions & Weight (WxHxD)

Outside (Max) Cooktop Dimensions:

36" x 5 41/72" x 22 1/3"

Cooktop Cut-Out Dimensions:

33 7/8" x 3 1/8" x 19 1/8"

Weight: 87.7 lbs. (88.4 lbs. Fingerprint Resistant Black Stainless Steel)

Shipping Dimensions & Weight (WxHxD)

Dimensions: 40 9/16" x 10 5/8" x 25 7/8"

Weight: 95.9 lbs. (97.2 lbs. Fingerprint Resistant Black Stainless Steel)

Color

Stainless Steel

Model

NA36N7755TS

UPC Code

887276281766

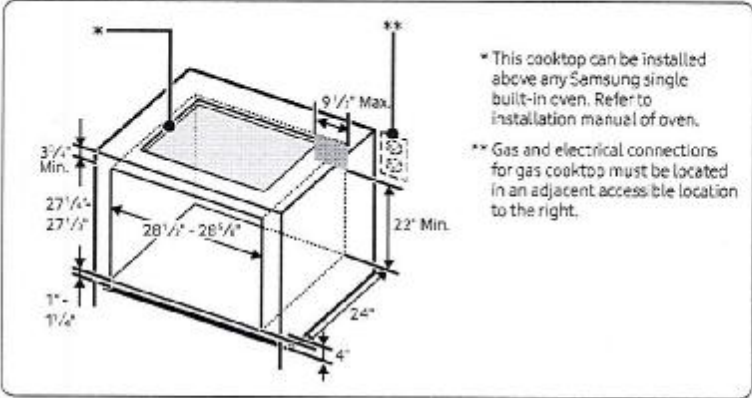
Fingerprint Resistant

Black Stainless Steel

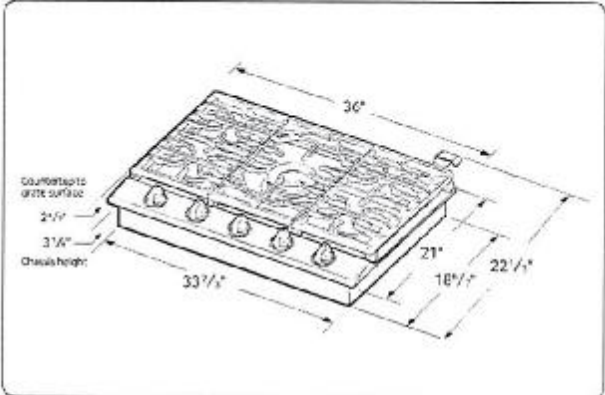
NA36N7755TG

887276281759

Installing Over a Single Oven



Cooktop Dimensions



+ Deady + Chen

THAMES 4A: LOT 215
RE: FRIDGE SPEC'S

Samsung
RF27T5501SR

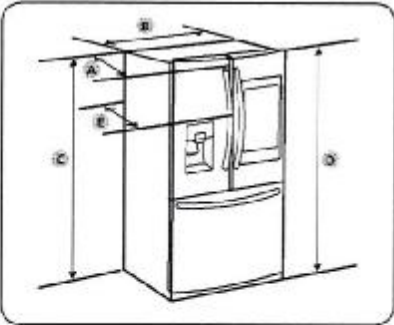


CAS

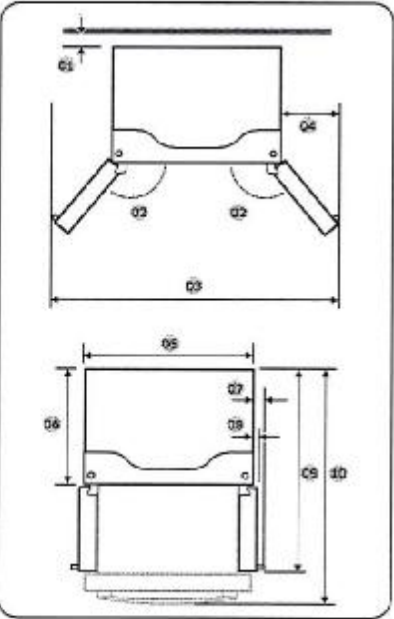
+ Perry + Lument

Installation

Clearance
See the following figures and tables for space requirements for installation.



Model	RF27"
Depth "A"	32 7/8" (836 mm)
Width "B"	35 1/4" (908 mm)
Height "C"	68 7/8" (1749 mm)
Overall Height "D"	70" (1777 mm)
Depth "E"	35 3/8" (898 mm)



Model	RF27"
01	2" (50 mm)
02	130°
03	62 3/8" (1581 mm)
04	13 3/8" (337 mm)
05	35 3/8" (908 mm)
06	28 7/8" (735 mm)
07	3 5/8" (93 mm)
08	1 7/8" (47 mm)
09	47 3/8" (1201 mm)
10	51 7/8" (1318 mm)

NOTE
The measurements in the table above may differ slightly from the actual measurements, depending on the measuring and rounding method.



2-Park Day Amend