



CONSTRUCTION SUMMARY

Kingsmen (Thames) Inc. / Havelock Corners (Kingsmen)

Lot/Unit: 216 Phase/Building: 4A Model/Floor Plan: John (4201) Elev A 4 Bed - 2+1 Bath

CABINETRY

Inv.5084	1 - See attached for fridge spec's	
Line 66474	Note:	
12Aug21 / 13Aug21		
Inv.5084	1 - To accomdoate the cabinetry for the 30" chimney hoodfan	
Line 66483	Note:	
12Aug21 / 13Aug21		

CABINETRY HOOD FANS

Inv.5084	1 - To supply and install a HOOD FAN - PRO COLLECTION (SCB72230) WALL MOUNT RANGE HOOD WITH 650 CFM FAN - 30 INCH - in the kitchen.. in lieu of the standard hoodfan	
Line 66482	Note:	
12Aug21 / 13Aug21		

COUNTER TOP

Inv.5084	1 - As per schedule "PE": Vendor to include level 1, 2cm. granite or quartz in all bathrooms, as per plan, in lieu of the included laminate countertops. Selections to be made from builders standard samples.	
Line 66472	Note:	
12Aug21 / 13Aug21		

ELECTRICAL

Inv.5084	1 - To supply and install the standard T.V rough-in, in the Great Room and Master Ensuite... see sketch #1 and #2	
Line 66475	Note:	
12Aug21 / 13Aug21		
Inv.5084	1 - To supply and install the standard Phone (CAT 5) rough-in, in the Great Room, Master Bedroom and Bedroom #3... see sketch #1 and #2	
Line 66476	Note:	
12Aug21 / 13Aug21		
Inv.5084	1 - To SUPPLY AND INSTALL AN ADDITIONAL BASIC RECEPTACLE (NOT DEDICATED) centered +- above the F/P Mantle in the Great Room, at approx. 66" +- up from the floor.. see sketch #1	
Line 66477	Note: THIS IS FOR FUTURE WALL MOUNT T.V	
12Aug21 / 13Aug21		
Inv.5084	1 - To SUPPLY AND INSTALL CONDUIT FOR TV OVER THE FIREPLACE in the GREAT ROOM next to +- the upg. elec. outlet- TERMINATED IN SAME ROOM next to the standard T.V and Phone rough-in.. see sketch #1	
Line 66478	Note: THIS IS FOR FUTURE WALL MOUNT T.V	
12Aug21 / 13Aug21		
Inv.5084	1 - To SUPPLY AND INSTALL EXTRA CEILING BOX ROUGH IN CAPPED (ON A SEPARATE SWITCH) over the breakfast bar in the kitchen... see sketch #1	
Line 66479	Note:	
12Aug21 / 13Aug21		

HEATING AND AIR CONDITIONING

Kingsmen (Thames) Inc. / Havelock Corners (Kingsmen)

Lot/Unit: 216 Phase/Building: 4A Model/Floor Plan: John (4201) Elev A 4 Bed - 2+1 Bath

Inv.5084	1 - As per schedule "PE": Vendor to install capped gas line (rough in only) at rear of home for future BBQ location. Location to be finalized at vendors sole discretion.	
Line 66469	Note:	
12Aug21 / 13Aug21		
Inv.5084	1 - As per schedule "PE": Vendor to install gas line (rough in only) to kitchen in at stove location (as per plan) to include 110V code requirement.	
Line 66470	Note:	
12Aug21 / 13Aug21		
Inv.5084	1 - As per schedule "PE": Vendor to supply & install air conditioning unit, sized accordingly, from vendors standard samples.	
Line 66471	Note:	
12Aug21 / 13Aug21		

PLUMBING

Inv.5084	5 - To supply and install VANITY SINK - CONTRAC CATENA UNDERMOUNT - MODEL 4210CIY in all bathrooms (PWD, Master Ensuite and Main Bathroom), in lieu of the standard sink.. see spec's	
Line 66485	Note:	
12Aug21 / 13Aug21		

RAILING

Inv.5084	1 - As per schedule "PE": Vendor to include wrought iron pickets throughout in lieu of included wood pickets as per plan. This has no cash value. To be selected from builders standards.	
Line 66473	Note:	
12Aug21 / 13Aug21		



CONSTRUCTION SUMMARY

Kingsmen (Thames) Inc. / Havelock Corners (Kingsmen)

Lot/Unit: 216 Phase/Building: 4A Model/Floor Plan: John (4201) Elev A 4 Bed - 2+1 Bath

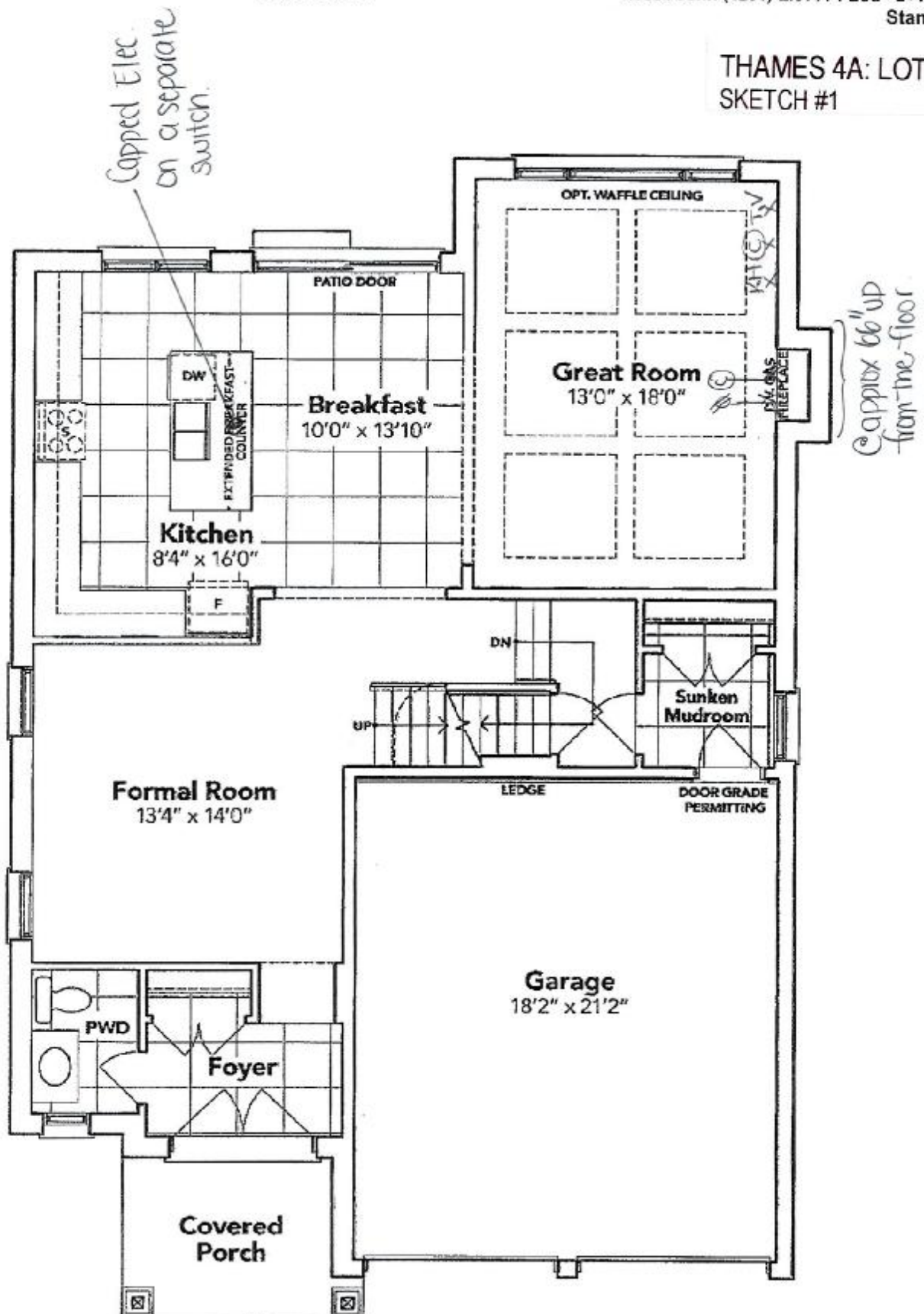
EXTRAS AS PER OFFER

<div>PURCHASER ACKNOWLEDGES THAT GRADING PLANS HAVE NOT BEEN FINALIZED AND AS SUCH INFORMATION ON DECK AND WALK OUT CONDITIONS ARE NOT YET AVAILABLE. GRADING IS SUBJECT TO THE TERMS AND CONDITIONS CAPTIONED IN THE AGREEMENT OF PURCHASE AND SALE HEREIN.</div> <div>Worksheet Note:</div>	
<div>5 FREE APPLIANCES ? STAINLESS STEEL FRONT - FRIDGE: STOVE AND DISHWASHER. WHITE WASHER AND DRYER (SUPPLIED ONLY, NOT INSTALLED, FROM BUILDERS STANDARD LINE). A BAD BOY APPLIANCES VOUCHER WILL BE GIVEN BY OUR DECOR CONSULTANT AT THE TIME OF BOOKING YOUR C</div> <div>Worksheet Note:</div>	
<div>VENDOR TO INSTALL CAPPED GAS LINE (ROUGH-IN ONLY) AT REAR OF HOME FOR FUTURE BBQ LOCATION. LOCATION TO BE FINALIZED AT VENDORS SOLE DISCRETION.</div> <div>Worksheet Note:</div>	
<div>VENDOR TO INSTALL GAS LINE (ROUGH-IN ONLY) TO KITCHEN IN AT STOVE LOCATION (AS PER PLAN) TO INCLUDE 110V CODE REQUIREMENT.</div> <div>Worksheet Note:</div>	
<div>VENDOR TO SUPPLY & INSTALL AIR CONDITIONING UNIT, SIZED ACCORDINGLY, FROM VENDORS STANDARD SAMPLES.</div> <div>Worksheet Note:</div>	
<div>VENDOR TO INCLUDE LEVEL 1, 2CM GRANITE OR QUARTZ IN ALL BATHROOMS, AS PER PLAN, IN LIEU OF THE INCLUDED LAMINATE COUNTER TOPS. SELECTIONS TO BE MADE FROM BUILDERS STANDARD SAMPLES.</div> <div>Worksheet Note:</div>	
<div>VENDOR TO INCLUDE WROUGHT IRON PICKETS THROUGHOUT IN LIEU OF INCLUDED WOOD PICKETS AS PER PLAN. THIS HAS NO CASH VALUE. TO BE SELECTED FROM BUILDERS STANDARDS.</div> <div>Worksheet Note:</div>	

SCHEDULE "B-1"
Floor Plan

Lot 216
Phase 4A
Model: John (4201) Elev A 4 Bed - 2+1 Bath
Standard

THAMES 4A: LOT 216
SKETCH #1



GROUND FLOOR EL. A

Kawel

John

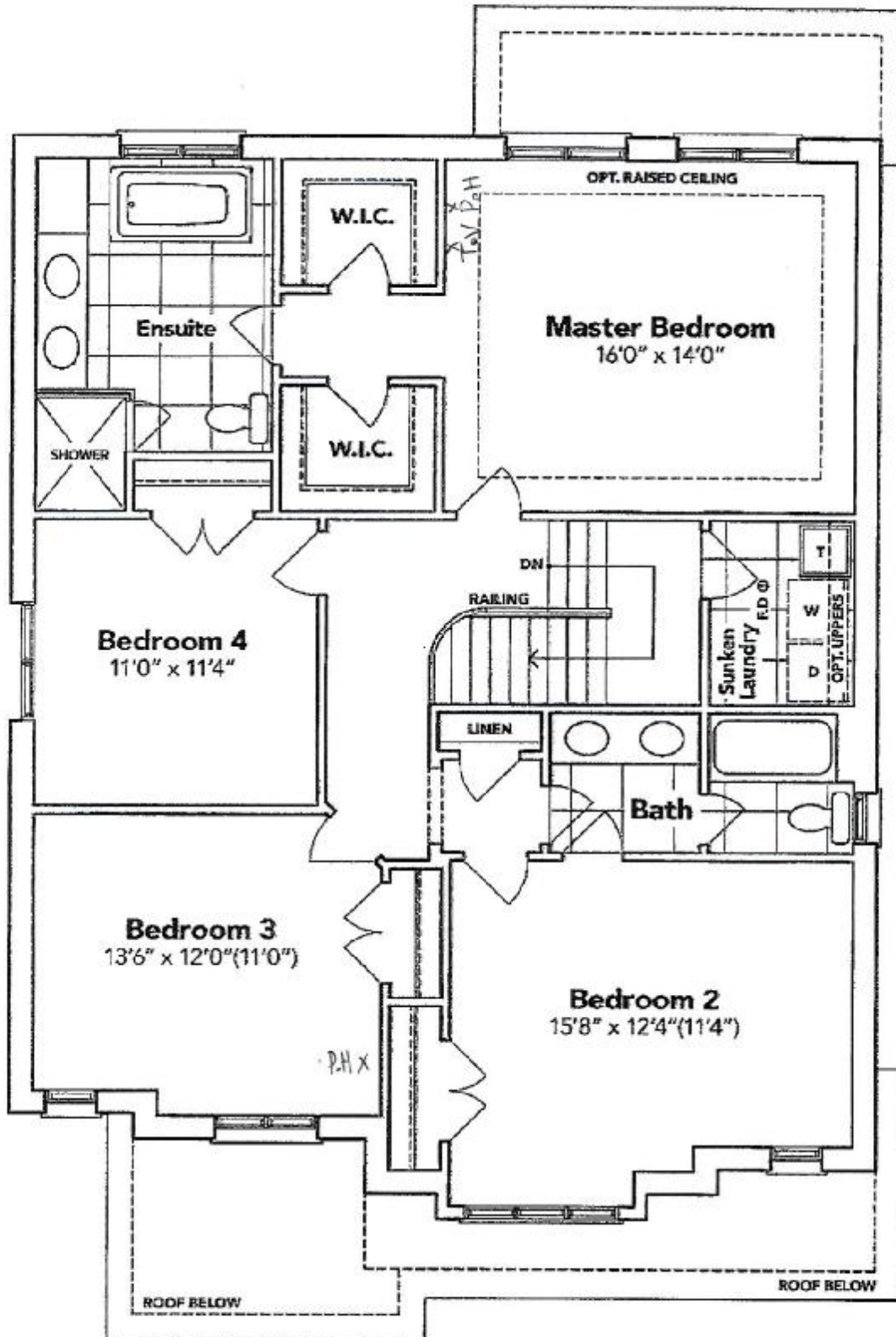
The floor plans and elevations shown are pre-construction plans and may be revised or improved as necessitated by architectural controls and the construction process. The measurements adhere to the rules and regulations of the TARION Warranty Corporation's official method for the calculation of floor area. Materials, specifications and floor plans are subject to change without notice. All house renderings are artist's concept only. Actual usable floor space may vary from the stated floor area. All options shown are upgrades. E. & O. E.

SCHEDULE "B-1" - Page 3 of 3

SCHEDULE "B-1"
Floor Plan

LOT 216
Phase 4A
Model: John (4201) Elev A 4 Bed - 2+1 Bath
Standard

THAMES 4A: LOT 216
SKETCH #2



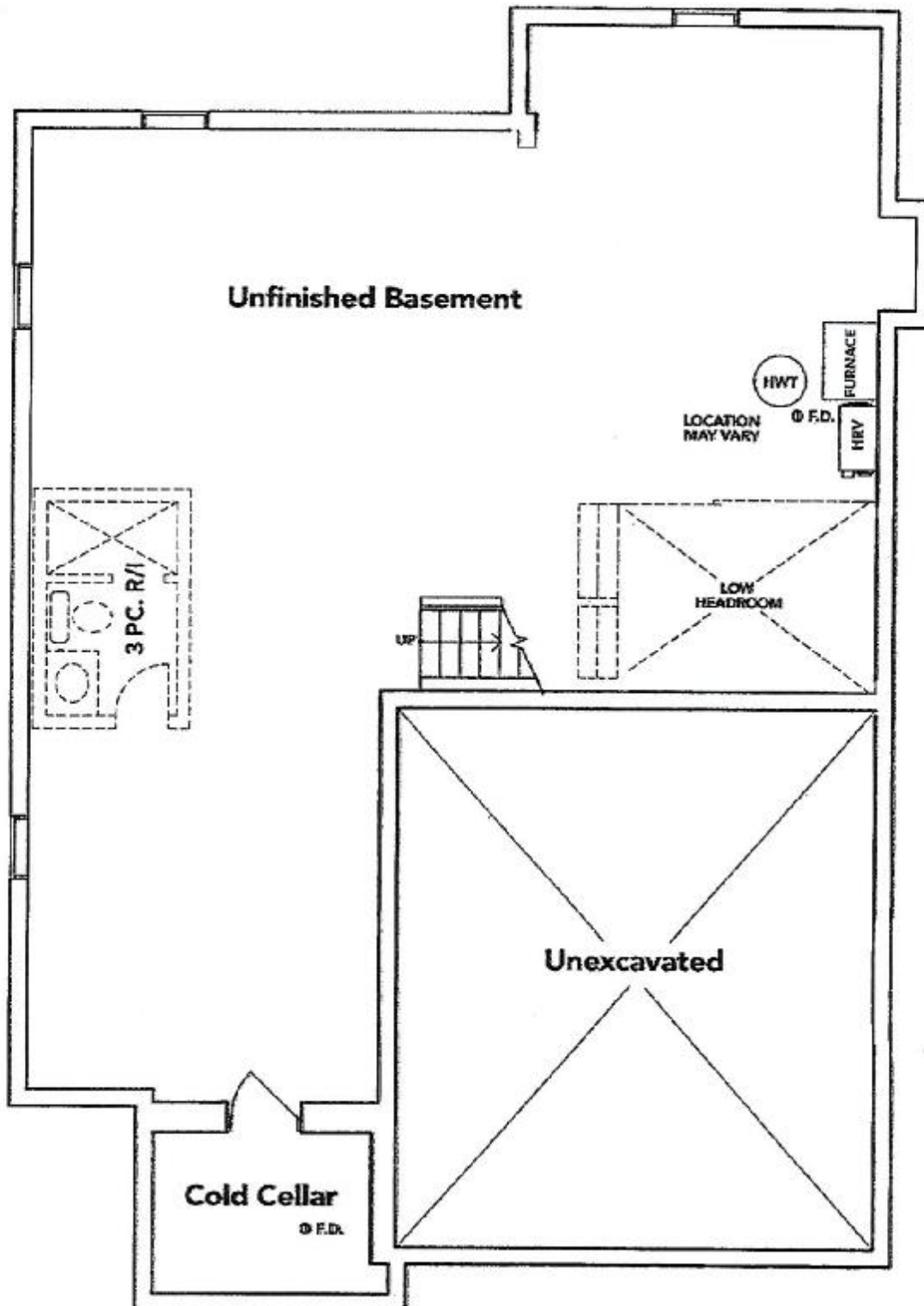
SECOND FLOOR EL. A

The floor plans and elevations shown are pre-construction plans and may be revised or improved as necessitated by architectural controls and the construction process. The measurements adhere to the rules and regulations of the TARIION Warranty Corporation's official method for the calculation of floor area. Materials, specifications and floor plans are subject to change without notice. All house renderings are artist's concept only. Actual usable floor space may vary from the stated floor area. All options shown are upgrades. E. & O. E.

SCHEDULE "B-1"
Floor Plan

Lot 216
Phase 4A
Model: John (4201) Elev A 4 Bed - 2+1 Bath
Standard

THAMES 4A: LOT 216
SKETCH #3



BASEMENT EL. A

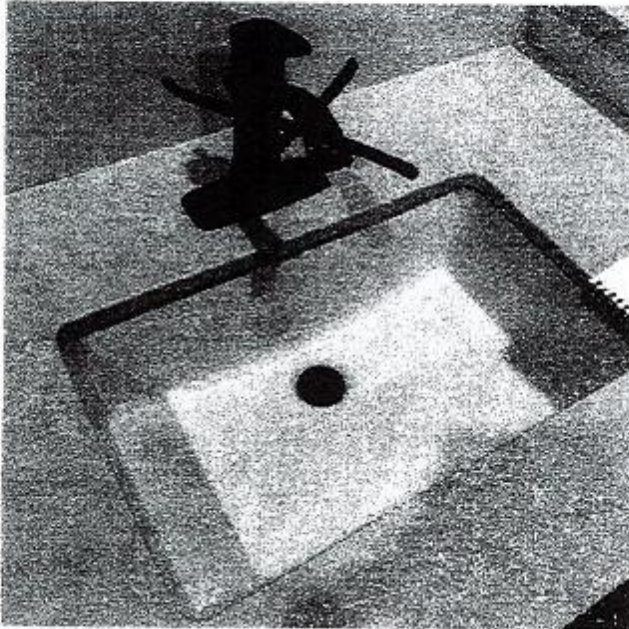
x 

x 

The floor plans and elevations shown are pre-construction plans and may be revised or improved as necessitated by architectural controls and the construction process. The measurements adhere to the rules and regulations of the TARION Warranty Corporation's official method for the calculation of floor area. Materials, specifications and floor plans are subject to change without notice. All house renderings are artist's concept only. Actual usable floor space may vary from the stated floor area. All options shown are upgrades. E. & O. E.

SCHEDULE "B-1" - Page 1 of 3

THAMES 4A: LOT 216
RE: UPG. SINKS (PWD, MASTER ENSUITE
& MAIN BATHROOM)



DISPLAY ITEMS

Sink (Item 9)

Contrac Catena Undermount
Model 4210CIY

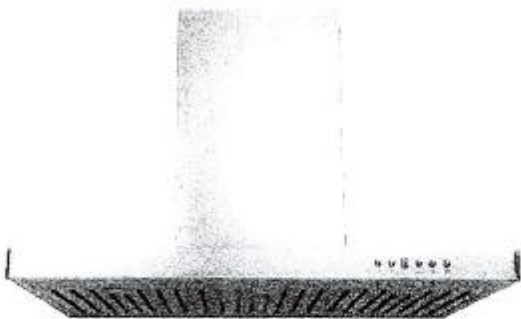
[Signature]

[Signature]

Specifications

THAMES 4A: LOT 216
RE: 30" CHIMNEY HOODFAN

Air Flow Volume: 650 CFM
Electrical Connection: 120V/60Hz
Power Consumption: 240 Watts
Current: 2.0 Amps
Fan Speed: 1599 RPM
Finishes: Stainless Steel
Duct: 6" Round
Knock-out: 6" Round - Top Only
Dimensions: Width: 30"/36"
Height: 44 1/2"
Depth: 19 3/4"
Noise Level: Min. 2 Sones
Max. 7 Sones



SCB722 - Baffle Filter



Ordering Model Chart

Model	Colour	Knock-out	Duct	Size	Filter	CFM
SCB72230	Stainless Steel	6"	6" Round	30"	Baffle	650
SCB72236	Stainless Steel	6"	6" Round	36"	Baffle	650

Notes L *[Signature]* + *[Signature]*



RF28R7201SR

28 cu. ft. 4-Door French Door Refrigerator

THAMES 4A: LOT 216
RE: FRIDGE SPEC'S

NO waterline has been purchased



Signature Features

FlexZone™ Drawer

A flexible storage drawer with four different temperature settings and an adjustable Smart Divider to stay organized.

Fingerprint Resistant

A special finish to reduce smudges and minimize cleaning.

Wi-Fi and Bixby Enabled

Use your smartphone to control the temperature and monitor your refrigerator remotely.

Available Colors



Fingerprint Resistant
Stainless Steel (shown)



Fingerprint Resistant
Black Stainless Steel



Fingerprint Resistant
Tuscan Stainless Steel



French Door Design



FlexZone™ Drawer

Convenience

- FlexZone™ Drawer with 4 Temperature Settings and Smart Divider
- Adjustable Shelves for Tall Oversized Items
- Auto Pull-Out Upper Freezer Drawer
- Water Filter Indicator

Design

- Modern External Filtered Water and Ice Dispenser
- High Efficiency LED Lighting
- Accessibility (ADA Compliant)
- EZ-Open Handle™ on Freezer Door and FlexZone™ Drawer
- Tempered Glass Spill-Proof Shelves
- Gallon Door Bins
- Dispenser Light

Performance

- Twin Cooling Plus®
- Ice Max - Stores up to 10 lbs of ice
- Energy Star® Compliant
- Power Freeze and Power Cool Options
- Two Humidity-Controlled Crispers
- CoolTight Door
- Door Alarm

Rating



ENERGY STAR® rated:
755 kWh/yr

[Handwritten signature] *[Handwritten signature]*

RF28R7201SR

28 cu. ft. 4-Door French Door Refrigerator

THAMES 4A: LOT 216
RE* FRIDGE SPEC'S

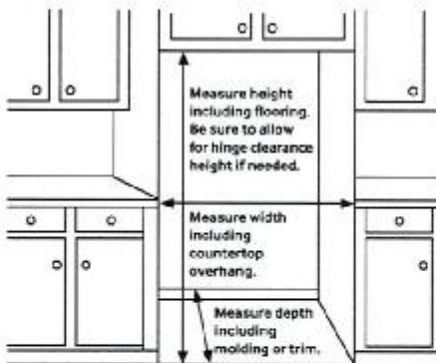
**NO Waterline has been purchased.*

Installation Specifications

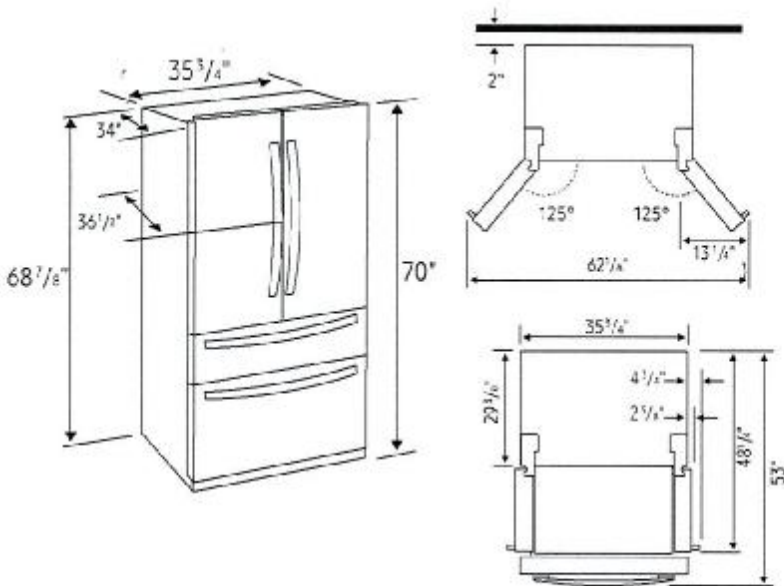
1. Measure the height, width and depth of the opening, making sure to include baseboards, molding tile, countertop overhang, etc. Check to be sure there is enough room to open the door (consider walls, islands or other obstacles when measuring).
2. Refer to illustration below to determine dimensions.
3. Allow 2.5" of clearance on hinge side of refrigerator when installing next to a wall where handle may make contact.
4. Allow 1" minimum clearance at rear for proper air circulation and water/electrical connections. Allow a 3/8" minimum clearance at sides and top for ease of installation.
5. Ensure each door and entryway in the home is wide enough for the refrigerator to be moved through easily.

For optimal usage and to be able to open refrigerator doors completely, do not install next to a wall.

Please note: The following dimension and cutout information is for planning purposes only. For complete installation details, consult manual packed with product, or download manual online at samsung.com.



Dimensions



Total Capacity: 28 cu. ft.

Refrigerator: 15.9 cu. ft.

- Modern External Filtered Water and Ice Dispenser
 - Crushed or Cubed Ice
- Ice Max
- 2 Humidity-Controlled Crispers
- 5 Tempered Glass Spill-Proof Shelves
- Adjustable Shelf for Tall Oversized Items
- 6 Door Bins
 - Right Door: 3 Gallon Bins
 - Left Door: 3 Regular Bins
- High Efficiency LED Lighting

FlexZone™ Drawer: 3.8 cu. ft.

- EZ-Open Handle™
- 4 Temperature Zones with Smart Divider:
 - Meat/Fish (29°F)
 - Cold Drinks (33°F)
 - Deli/Snacks (37°F)
 - Wine/Party Dishes (42°F)
- High Efficiency LED Lighting

Freezer: 8.3 cu. ft.

- EZ-Open Handle™
- 1 Drawer Divider
- High Efficiency LED Lighting

Warranty

One (1) Year Parts and Labor on Refrigerator
Five (5) Years Parts and Labor on Sealed Refrigeration System Only*
Ten (10) Years Parts and Five (5) Years Labor on Digital Inverter Compressor

*Compressor, evaporator, condenser, orner and connecting tubing.

Product Dimensions & Weight

Dimensions (WxHxD with hinges, handles and doors):

35 3/4" x 70" x 36 1/2"

Dimensions (WxHxD without hinges and door):

35 3/4" x 68 7/8" x 29 3/8"

Dimensions (WxHxD with hinge and door, no handle):

35 3/4" x 70" x 34"

Weight: 322 lbs.

Shipping Dimensions & Weight (WxHxD)

Dimensions: 38 1/4" x 75 3/4" x 36 1/4"

Weight: 344 lbs.

Color	Model #	UPC Code
Fingerprint Resistant Stainless Steel	RF28R7201SR	887276304922
Fingerprint Resistant Black Stainless Steel	RF28R7201SG	887276304915
Fingerprint Resistant Tuscan Stainless Steel	RF28R7201DT	887276304908

Actual color may vary. Design, specifications, and color availability are subject to change without notice. Non-metric weights and measurements are approximate.
©2015 Samsung Electronics America, Inc., 65 Challenger Road, Ridgefield Park, NJ 07660. Tel: 800-SAMSUNG. samsung.com. Samsung is a registered trademark of Samsung Electronics Co., Ltd.

[Handwritten signature]

[Handwritten signature]