

Kingsmen (Thames) Inc. / Havelock Corners (Kingsmen)

Lot/Unit: 97 Phase/Building: 4B Model/Floor Plan: Philip (4202) Elev B 4 Bed - 2+1 Bath

CABINETRY APPLIANCE - FRIDGE

Inv.5090	1 - To supply & install the 66CM DEEP FRIDGE ENCLOSURE - COUNTER DEPTH WITH - 1 WALL - 1 66CM DEEP GABLE AND 1 66CM DEEP CABINET - THIS IS NOT A ZERO CLEARANCE ENCLOSURE. STANDARD HEIGHTS AND WIDTHS WILL BE USED. - CLASSIC SERIES in the kitchen..	
Line 66718	Note: See sketch # 1	
23Aug21 / 24Aug21		

CABINETRY PANTRY

Inv.5090	2 - To supply & install PANTRY 66 CM DEEP IN LIEU OF UPPER - BASE - COUNTER DEPTH - CLASSIC SERIES in the kitchen next to the fridge... see sketch # 1	
Line 66717	Note:	
23Aug21 / 24Aug21		

CABINETRY VANITY

Inv.5090	1 - To supply & install a VANITY BANK OF DRAWERS -CLASSIC SERIES in the master ensuite... see sketch # 2	
Line 66721	Note:	
23Aug21 / 24Aug21		
Inv.5090	1 - To supply & install a VANITY BANK OF DRAWERS -CLASSIC SERIES in the main bathroom... see sketch # 2	
Line 66722	Note:	
23Aug21 / 24Aug21		
Inv.5090	1 - To supply & install the INCREASE VANITY TO KITCHEN HEIGHTT - 90CM HIGH - MAINTAINS VANITY DEPTH - CLASSIC SERIES in the master ensuite..	
Line 66723	Note:	
23Aug21 / 24Aug21		
Inv.5090	1 - To supply & install the INCREASE VANITY TO KITCHEN HEIGHTT - 90CM HIGH - MAINTAINS VANITY DEPTH - CLASSIC SERIES in the main bathroom.	
Line 66724	Note:	
23Aug21 / 24Aug21		

COUNTER TOP

Inv.5090	1 - As per schedule "PE" Vendor to include Level 1, 2cm. granite or quartz in all bathrooms, as per plan, in lieu of the included laminate counter tops. Selections to be make from builders standard samples.	
Line 66687	Note:	
23Aug21 / 24Aug21		

ELECTRICAL

Inv.5090	1 - To supply and install the standard Phone (CAT 5) rough-in, in th Great Room, Master Ensuite and Bedroom # 3.. see sketch #1 and #2	
Line 66700	Note:	
23Aug21 / 24Aug21		
Inv.5090	1 - To supply and install the standard T.V Rough-in, in the Great Room and Master Bedroom...see sketch #1 and #2	
Line 66701	Note:	
23Aug21 / 24Aug21		

Kingsmen (Thames) Inc. / Havelock Corners (Kingsmen)

Lot/Unit: 97 Phase/Building: 4B Model/Floor Plan: Philip (4202) Elev B 4 Bed - 2+1 Bath

Inv.5090	1 - To SUPPLY AND INSTALL AN ADDITIONAL BASIC RECEPTACLE (NOT DEDICATED) centered +- over the F/P Mantle in the Great Room, at approx. 66"+- up from the floor.. see sketch #1	
Line 66702	Note: TO SUPPLY THE STANDARD PHONE AND T.V ROUGH-IN, NEXT TO +- THE UPG. ELEC. OUTLET	
23Aug21 / 24Aug21	THIS IS FOR A FUTURE WALL MOUNT T.V.	
Inv.5090	1 - To supply and install an additional exterior light fixture connected to the standard switch & standard exterior light in the portico area.. see sketch #1	
Line 66704	Note:	
23Aug21 / 24Aug21		
Inv.5090	1 - To SUPPLY AND INSTALL EXTRA CEILING BOX ROUGH IN CAPPED (CONNECTED TO A SEPARATE SWITCH) over the breakfast bar in the kitchen.. see sketch #1	
Line 66705	Note:	
23Aug21 / 24Aug21		
Inv.5090	1 - To relocate the standard light from the 2nd floor landing to the open to below area.. see sketch #2	
Line 66706	Note:	
23Aug21 / 24Aug21		

HARDWOOD

Inv.5090	1 - As per schedule "PE" Vendor to include engineered hardwood throughout the 2nd, floor, in lieu of included carpet, as per plan, selections to be made from builders included standards as outlined in schedule A. This has no cash value.	
Line 66689	Note:	
23Aug21 / 24Aug21		

HEATING AND AIR CONDITIONING

Inv.5090	1 - As per schedule "PE" Vendor to install gas line (rough in only) to kitchen in at stove location (as per plan) to include 110V code requirement.	
Line 66688	Note:	
23Aug21 / 24Aug21		
Inv.5090	1 - As per schedule "PE" Vendor to install capped gas line (rough in only) at rear of home for future BBQ locaion. Location to be finalized at vendors sole discretion.	
Line 66685	Note:	
23Aug21 / 24Aug21		
Inv.5090	1 - As per schedule "PE" Vendor to supply & install air conditioning unit, sized accordingly, from vendors standard samples.	
Line 66686	Note:	
23Aug21 / 24Aug21		

MISCELLANEOUS

Inv.5090	1 - As per schedule "PE" Vendor to include seamless glass shower door as per plan in the master ensuite.	
Line 66690	Note:	
23Aug21 / 24Aug21		

PAINT AND DRYWALL

Kingsmen (Thames) Inc. / Havelock Corners (Kingsmen)

Lot/Unit: 97 Phase/Building: 4B Model/Floor Plan: Philip (4202) Elev B 4 Bed - 2+1 Bath

Inv.5090	1 - To supply and install the standard coffered ceiling in the living room, as per plan.. see sketch #1	
Line 66696	Note:	
23Aug21 / 24Aug21		

PLUMBING

Inv.5090	1 - To supply and install the Blanco Quatrus U bar sink model 401245 in the servery area... see spec's	
Line 66697	Note: Still to install the standard faucet.	
23Aug21 / 24Aug21		

Inv.5090	5 - To supply and install VANITY SINK - CONTRAC CATENA UNDERMOUNT - MODEL 4210CIY in the Powder Room, Master Ensuite and Main Bathroom in lieu of the standard topmount sink... see spec's	
Line 66710	Note: Still to install the standard Lav. faucets.	
23Aug21 / 24Aug21		

Inv.5090	1 - To supply and install KITCHEN SINK - BLANCO QUATRUS UNDERMOUNT- MODEL 401247 in lieu of the standard undermount kitchen sink.. see spec's	
Line 66711	Note: Still to install the standard single hole kitchen faucet.	
23Aug21 / 24Aug21		



CONSTRUCTION SUMMARY

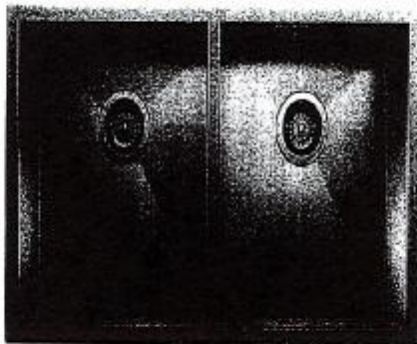
Kingsmen (Thames) Inc. / Havelock Corners (Kingsmen)

Lot/Unit: 97 Phase/Building: 4B Model/Floor Plan: Philip (4202) Elev B 4 Bed - 2+1 Bath

EXTRAS AS PER OFFER

PURCHASER ACKNOWLEDGES THAT GRADING PLANS HAVE NOT BEEN FINALIZED AND AS SUCH INFORMATION ON DECK AND WALK OUT CONDITIONS ARE NOT YET AVAILABLE. GRADING IS SUBJECT TO THE TERMS AND CONDITIONS CAPTIONED IN THE AGREEMENT OF PURCHASE AND SALE HEREIN. <i>Worksheet</i> Note:	
VENDOR TO INSTALL CAPPED GAS LINE (ROUGH-IN ONLY) AT REAR OF HOME FOR FUTURE BBQ LOCATION. LOCATION TO BE FINALIZED AT VENDORS SOLE DISCRETION. <i>Worksheet</i> Note:	
VENDOR TO SUPPLY & INSTALL AIR CONDITIONING UNIT, SIZED ACCORDINGLY, FROM VENDORS STANDARD SAMPLES. <i>Worksheet</i> Note:	
VENDOR TO INCLUDE LEVEL 1, 20CM GRANITE OR QUARTZ IN ALL BATHROOMS, AS PER PLAN, IN LIEU OF THE INCLUDED LAMINATE COUNTER TOPS. SELECTIONS TO BE MADE FROM BUILDERS STANDARD SAMPLES. <i>Worksheet</i> Note:	
VENDOR TO INSTALL GAS LINE (ROUGH-IN ONLY) TO KITCHEN IN AT STOVE LOCATION (AS PER PLAN) TO INCLUDE 110V CODE REQUIREMENT. <i>Worksheet</i> Note:	
VENDOR TO INCLUDE ENGINEERED HARDWOOD THROUGHOUT THE 2ND FLOOR, IN LIEU OF INCLUDED CARPET, AS PER PLAN, SELECTIONS TO BE MADE FROM BUILDERS INCLUDED STANDARDS AS OUTLINED IN SCHEDULE A. THIS HAS NO CASH VALUE. <i>Worksheet</i> Note:	
VENDOR TO INCLUDE SEEMLESS GLASS SHOWER DOOR AS PER PLAN IN THE MASTER ENSUITE. <i>Worksheet</i> Note:	
5 FREE APPLIANCES – STAINLESS STEEL FRONT - FRIDGE: STOVE AND DISHWASHER. WHITE WASHER AND DRYER (SUPPLIED ONLY, NOT INSTALLED, FROM BUILDERS STANDARD LINE) TO ARRANGE DELIVERY – CALL THE BRICK COMMERCIAL SALES DIVISION AT 1-877-353-2850. <i>Worksheet</i> Note:	

THAMES 4B: LOT 97
RE: UPG. KITCHEN SINK + Service Sink



QUATRUS U2

MODEL: 401247

German engineered with 304 series, 10-gauge stainless steel

Zero-reflex corners; X-pattern drain grooves

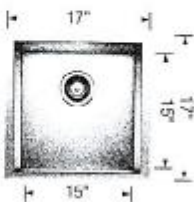
Double bowl configuration for easy multi-tasking

*B10 chrome-nickel coating for exceptional luster, durability and strength

Undermount installation

Minimum cabinet size: 36"

QUATRUS U2



Technical Specifications

Undermount	401245
Minimum Cabinet Size*	21" (535 mm)
Bowl Depth	8" (203 mm)
Cubed Weight	31 lb. (14 kg)

[Signature]

[Signature]

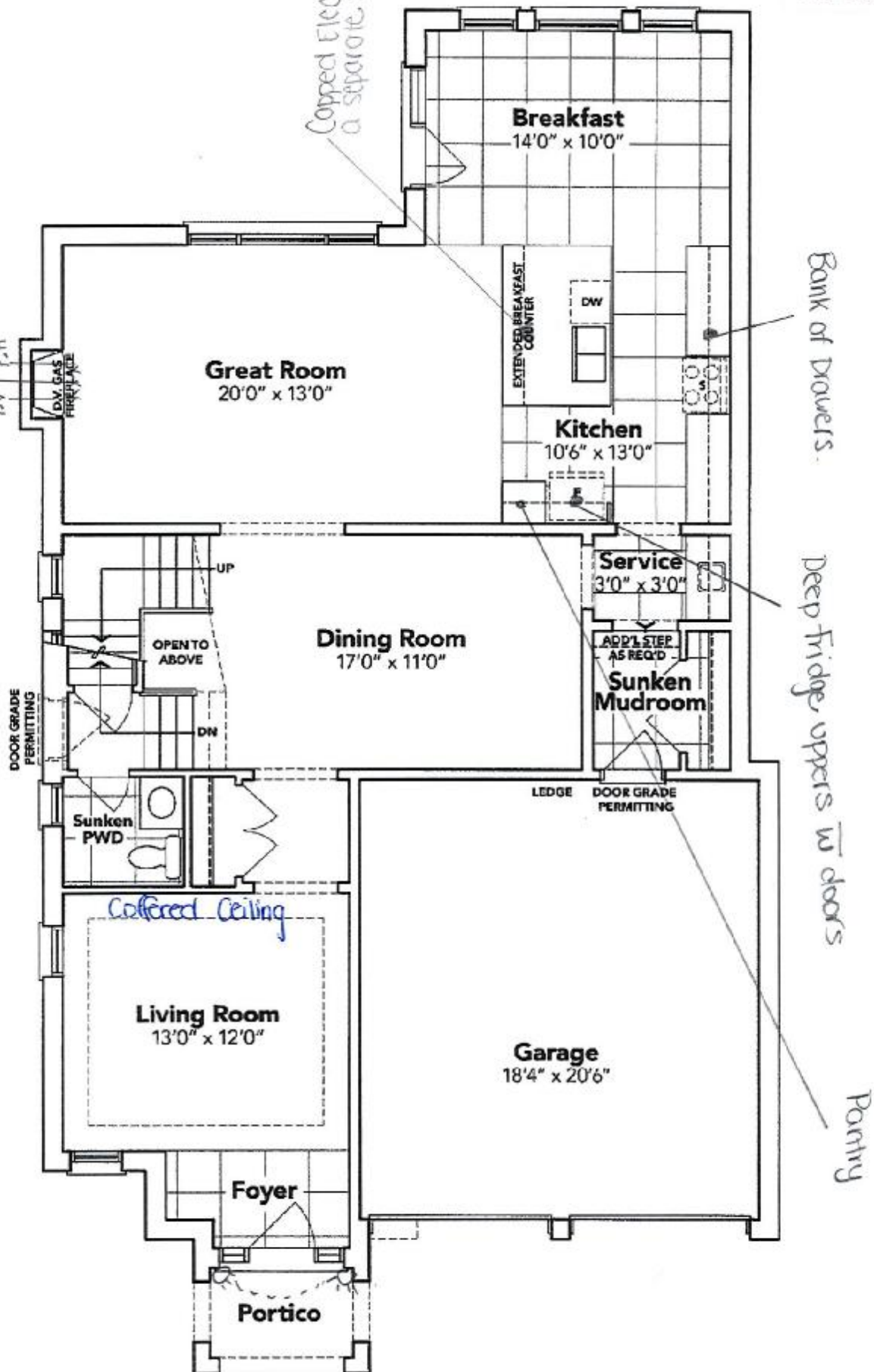
SCHEDULE "B-1"

Floor Plan

Lot 97
Phase 4B
Model: Philip (4202) Elev B 4 Bed - 2+1 Bath
Standard

SKETCH #1

@ approx. 66" up from the floor



GROUND FLOOR EL. B

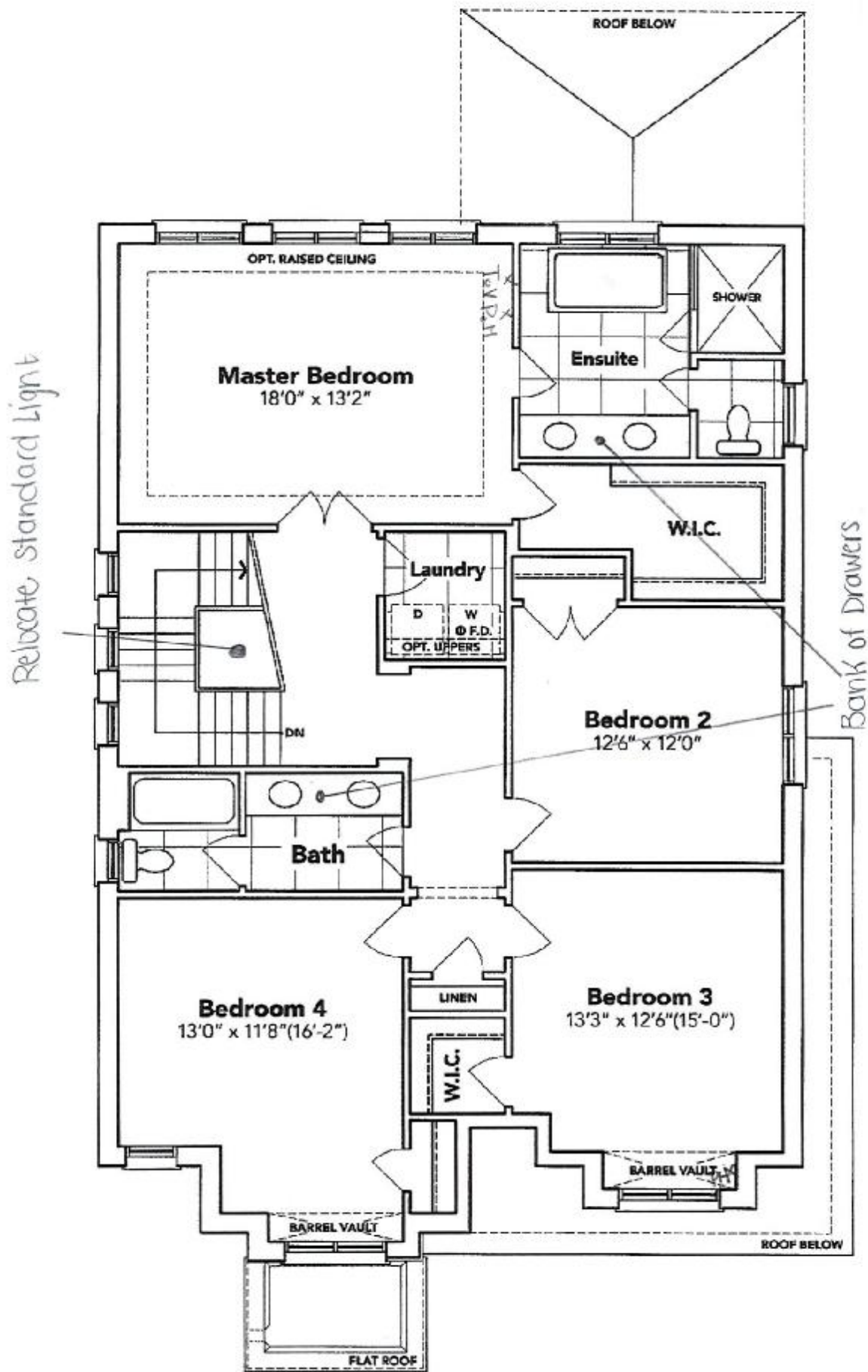
The floor plans and elevations shown are pre-construction plans and may be revised or improved as necessitated by architectural controls and the construction process. The measurements adhere to the rules and regulations of the TARION Warranty Corporation's official method for the calculation of floor area. Materials, specifications and floor plans are subject to change without notice. All house renderings are artist's concept only. Actual usable floor space may vary from the stated floor area. All options shown are upgrades. E. & O. E.

SCHEDULE "B-1" - Page 3 of 3

SCHEDULE "B-1"
Floor Plan

Lot 97
Phase 4B
Model: Phillip (4202) Elev B 4 Bed - 2+1 Bath
Standard

SKETCH #2



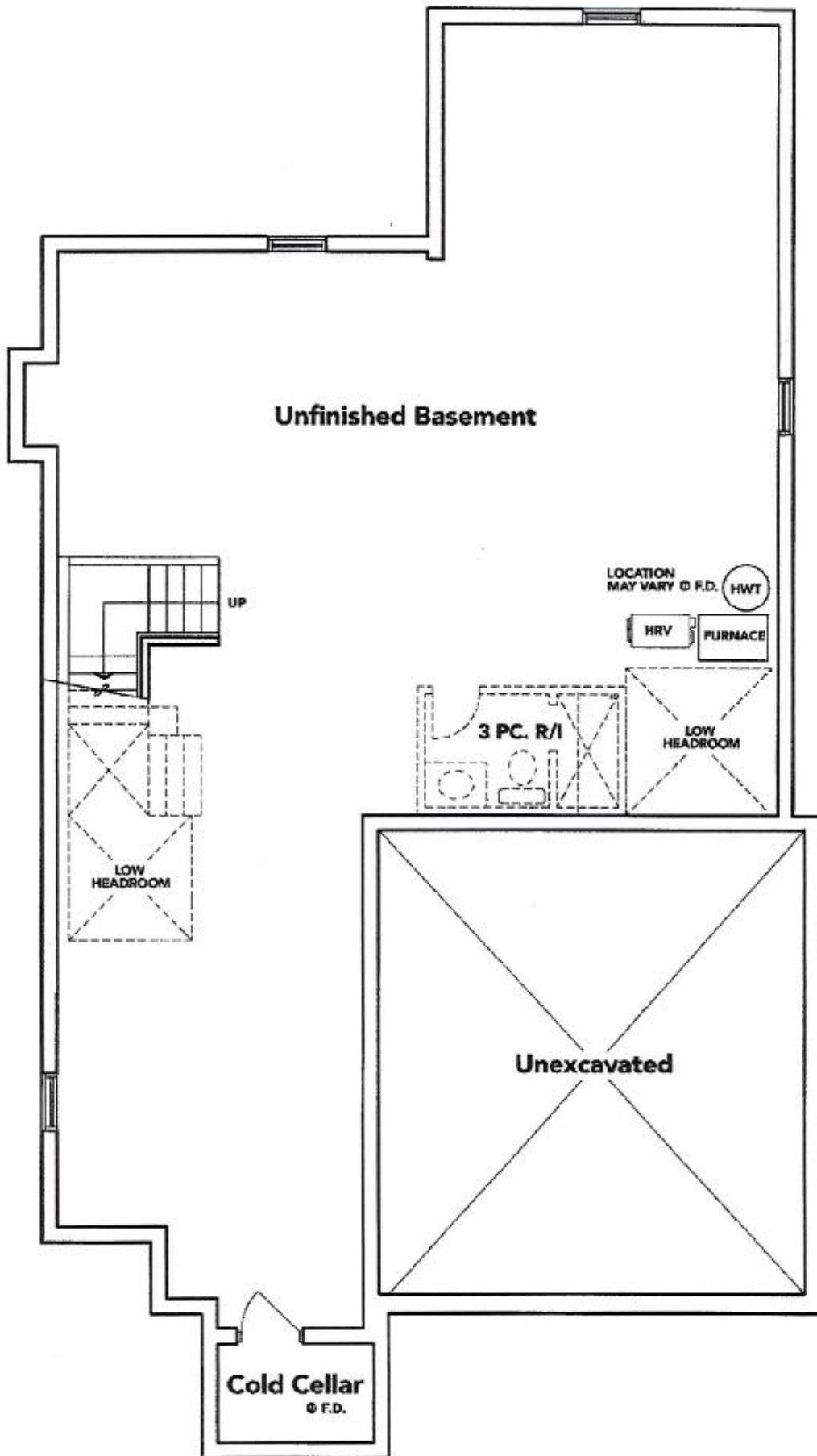
SECOND FLOOR EL. B

The floor plans and elevations shown are pre-construction plans and may be revised or improved as necessitated by architectural controls and the construction process. The measurements adhere to the rules and regulations of the TARION Warranty Corporation's official method for the calculation of floor area. Materials, specifications and floor plans are subject to change without notice. All house renderings are artist's concept only. Actual usable floor space may vary from the stated floor area. All options shown are upgrades. E. & O. E.

SCHEDULE "B-1"
Floor Plan

Lot 97
Phase 4B
Model: Philip (4202) Elev B 4 Bed - 2+1 Bath
Standard

SKETCH #3



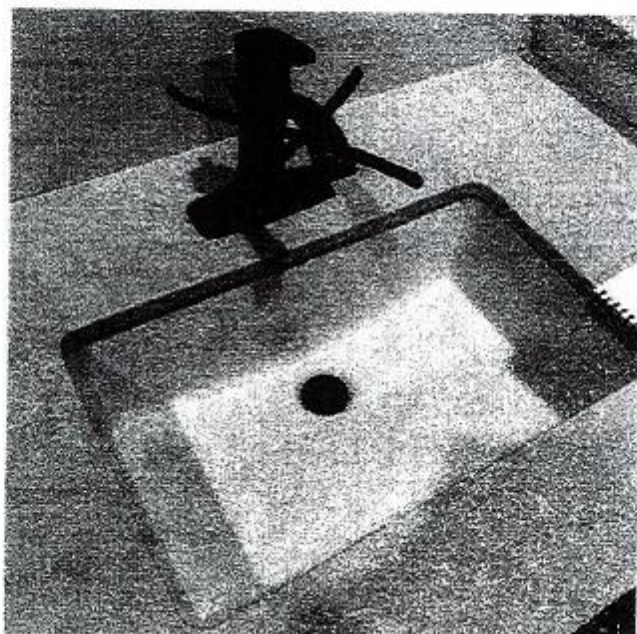
BASEMENT EL. B

The floor plans and elevations shown are pre-construction plans and may be revised or improved as necessitated by architectural controls and the construction process. The measurements adhere to the rules and regulations of the TARION Warranty Corporation's official method for the calculation of floor area. Materials, specifications and floor plans are subject to change without notice. All house renderings are artist's concept only. Actual usable floor space may vary from the stated floor area. All options shown are upgrades. E. & O. E.

SCHEDULE "B-1" - Page 1 of 3

THAMES 4B: LOT 97

RE: UPG. UNDERMOUNT SINKS (PWD,
MASTER ENSUITE & MAIN)



DISPLAY ITEMS

Sink (Item 9)

Contrac Catena Undermount
Model 4210CIY

[Signature]

x

[Signature]