



CONSTRUCTION SUMMARY

Kingsmen (Thames) Inc. / Havelock Corners (Kingsmen)

Lot/Unit: 217 Phase/Building: 4A Model/Floor Plan: John (4201) Elev B 4 Bed - 2+1 Bath

CABINETRY

Inv.5091	1 - See attached for fridge spec's	
Line 66739	Note:	
23Aug21 / 24Aug21		

COUNTER TOP

Inv.5091	1 - As per schedule "PE" Vendor to include Level 1, 2cm. granite or quartz in all bathrooms, as per plan, in lieu of the included laminate counter tops. Selections to be make from builders standard samples.	
Line 66694	Note:	
23Aug21 / 24Aug21		

ELECTRICAL

Inv.5091	1 - To supply and install the standard T.V Rough-in, in the Great Room and Master Bedroom.. see sketch #1 and #2	
Line 66727	Note: iNSTALL THE T.V. ROUGH IN AT APPROX. 66" + - UP FROM THE FLOOR CENTERED + - TO THE F/P MANTLE	
23Aug21 / 24Aug21		
Inv.5091	1 - To supply and install the standard Phone (CAT 5) rough-in, in the Great Room, Master Bedroom and Bedroom #2.. see sketch #1 and #2	
Line 66728	Note: iNSTALL THE PHONE ROUGH IN AT APPROX. 66" + - UP FROM THE FLOOR CENTERED + - TO THE F/P MANTLE	
23Aug21 / 24Aug21		
Inv.5091	1 - To SUPPLY AND INSTALL AN ADDITIONAL BASIC RECEPTACLE (NOT DEDICATED) centered +- above the F/P Mantle in the Great room, at approx. 66"+- up from the floor.. see sketch #1	
Line 66729	Note: THIS IS FOR A FUTURE WALL MOUNT T.V.	
23Aug21 / 24Aug21		

HARDWOOD

Inv.5091	1 - As per schedule "PE" Vendor to include engineered hardwood throughout the 2nd, floor hallway, in lieu of included carpet, as per plan, selections to be made from builders included standards as outlined in schedule A. This has no cash value.	
Line 66695	Note:	
23Aug21 / 24Aug21		

HEATING AND AIR CONDITIONING

Inv.5091	1 - As per schedule "PE" Vendor to install capped gas line (rough in only) at rearof home for future BBQ locaion. Location to be finalized at vendors sole discretion.	
Line 66691	Note:	
23Aug21 / 24Aug21		
Inv.5091	1 - As per schedule "PE" Vendor to install gas line (rough in only) to kitchen in at stove location (as per plan) to include 110V code requirement.	
Line 66692	Note:	
23Aug21 / 24Aug21		
Inv.5091	1 - As per schedule "PE" Vendor to supply & install air conditioning unit, sized accordingly, from vendors standard samples.	
Line 66693	Note:	
23Aug21 / 24Aug21		

Kingsmen (Thames) Inc. / Havelock Corners (Kingsmen)

Lot/Unit: 217 Phase/Building: 4A Model/Floor Plan: John (4201) Elev B 4 Bed - 2+1 Bath

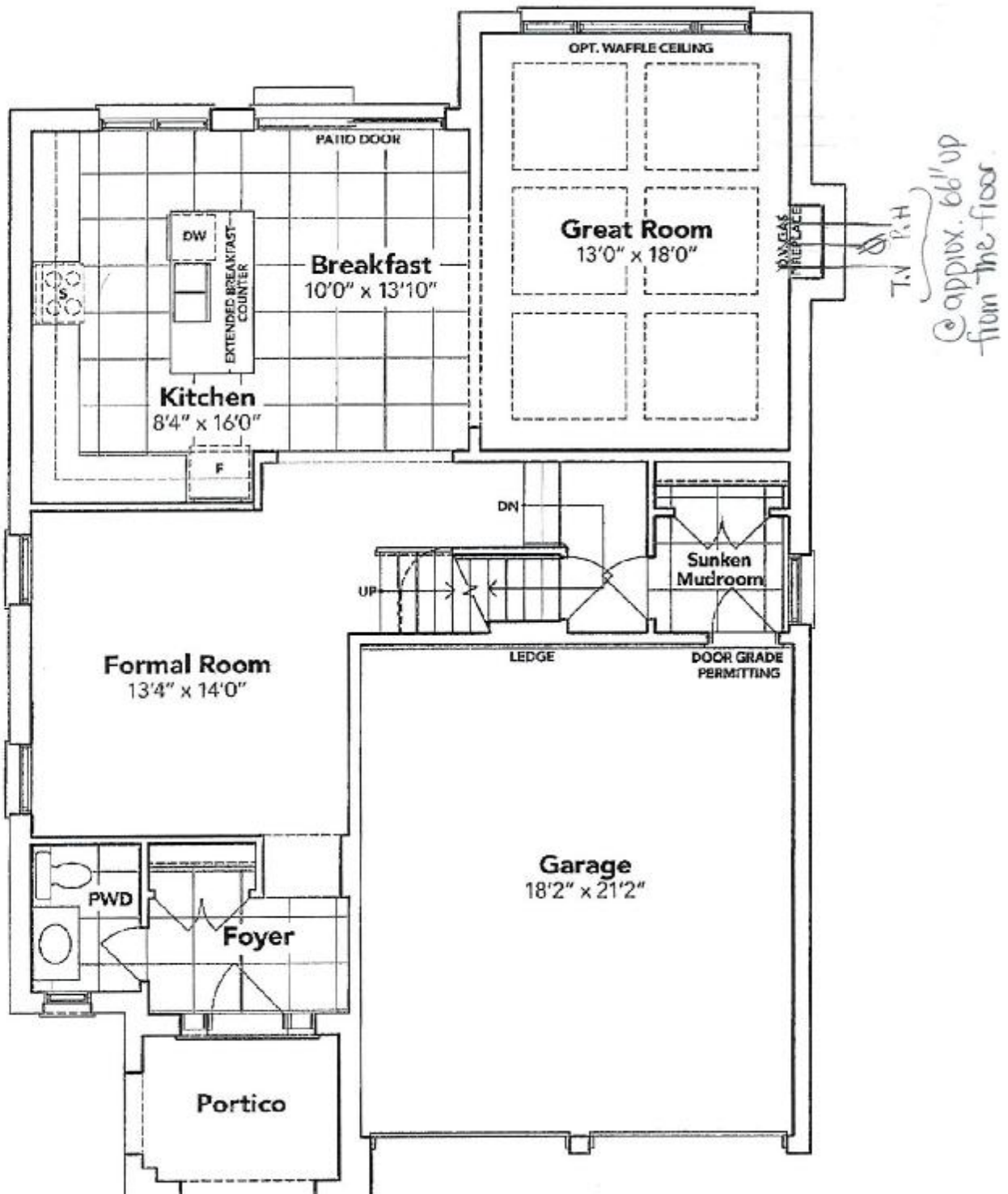
EXTRAS AS PER OFFER

5 FREE APPLIANCES – STAINLESS STEEL FRONT - FRIDGE: STOVE AND DISHWASHER. WHITE WASHER AND DRYER (SUPPLIED ONLY, NOT INSTALLED, FROM BUILDERS STANDARD LINE). A BAD BOY APPLIANCES VOUCHER WILL BE GIVEN BY OUR DECOR CONSULTANT AT THE TIME OF BOOKING YOUR C <i>Worksheet</i> Note:	
VENDOR TO INSTALL CAPPED GAS LINE (ROUGH-IN ONLY) AT REAR OF HOME FOR FUTURE BBQ LOCATION. LOCATION TO BE FINALIZED AT VENDORS SOLE DISCRETION. <i>Worksheet</i> Note:	
VENDOR TO INSTALL GAS LINE (ROUGH-IN ONLY) TO KITCHEN IN AT STOVE LOCATION (AS PER PLAN) TO INCLUDE 110V CODE REQUIREMENT. <i>Worksheet</i> Note:	
VENDOR TO SUPPLY & INSTALL AIR CONDITIONING UNIT, SIZED ACCORDINGLY, FROM VENDORS STANDARD SAMPLES. <i>Worksheet</i> Note:	
VENDOR TO INCLUDE LEVEL 1, 2CM GRANITE OR QUARTZ IN ALL BATHROOMS, AS PER PLAN, IN LIEU OF THE INCLUDED LAMINATE COUNTER TOPS. SELECTIONS TO BE MADE FROM BUILDERS STANDARD SAMPLES. <i>Worksheet</i> Note:	
VENDOR TO INCLUDE ENGINEERED HARDWOOD FLOORING THROUGHOUT THE SECOND FLOOR HALLWAY IN LIEU OF INCLUDED CARPET, AS PER PLAN, AND SELECTIONS AS OUTLINED IN SCHEDULE A FOR INCLUDED ENGINEERED HARDWOOD ON THE MAIN FLOOR. THIS HAS NO CASH VALUE. <i>Worksheet</i> Note:	

SCHEDULE "B-1"
Floor Plan

Lot 217
Phase 4A
Model: John (4201) Elev B 4 Bed - 2+1 Bath
Standard

SKETCH #1



GROUND FLOOR EL. B

SEE ATTACHED FOR SIGNATURES

+ *Just Soel.*

The floor plans and elevations shown are pre-construction plans and may be revised or improved as necessitated by architectural controls and the construction process. The measurements adhere to the rules and regulations of the TARION Warranty Corporation's official method for the calculation of floor area. Materials, specifications and floor plans are subject to change without notice. All house renderings are artist's concept only. Actual usable floor space may vary from the stated floor area. All options shown are upgrades. E. & O. E.

SCHEDULE "B-1" - Page 3 of 3

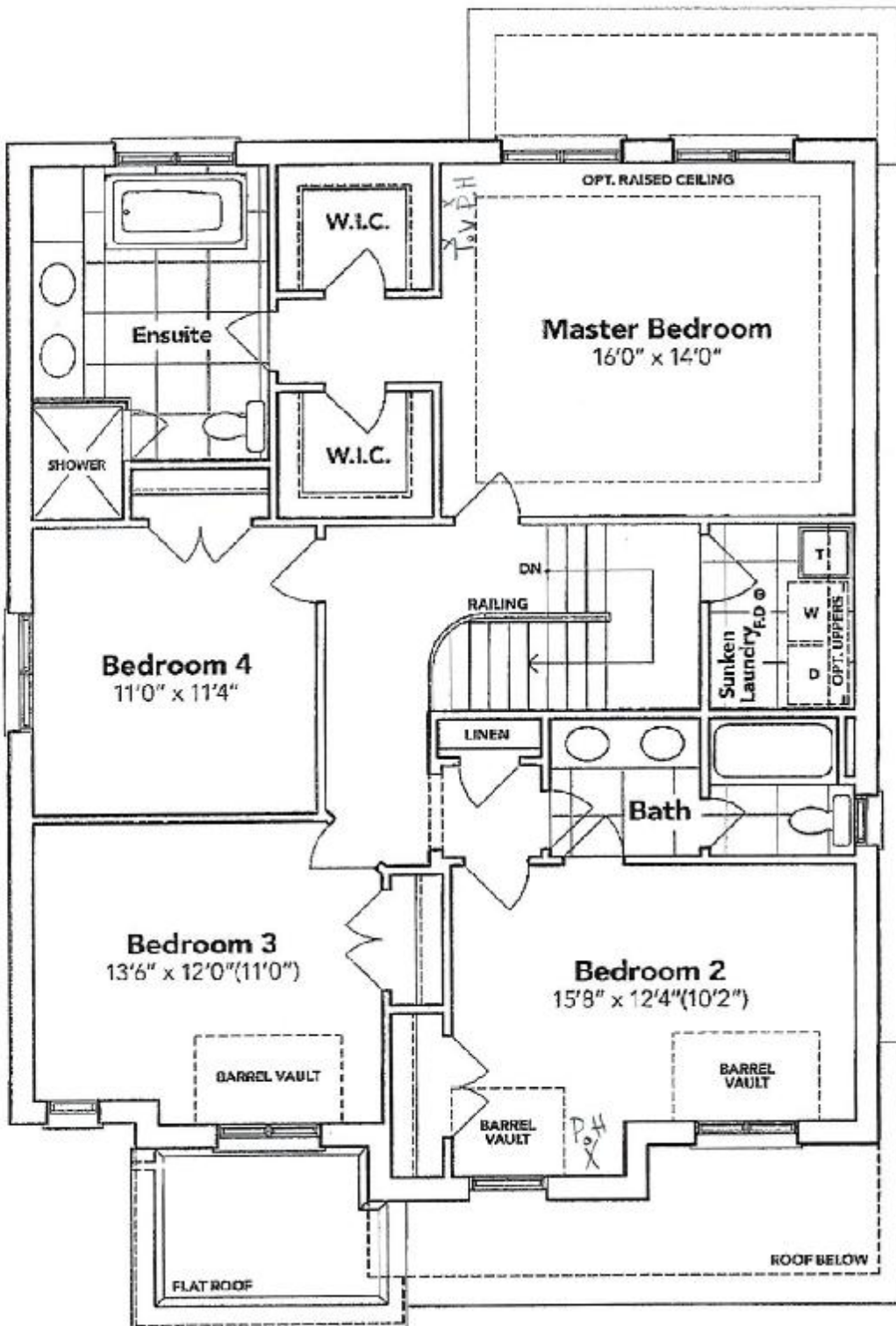
(R.S.)

Initials: _____

SCHEDULE "B-1"
Floor Plan

Lot 217
 Phase 4A
 Model: John (4201) Elev B 4 Bed - 2+1 Bath
 Standard

SKETCH #2



SECOND FLOOR EL. B

SEE ATTACHED FOR SIGNATURES *See Sketch*

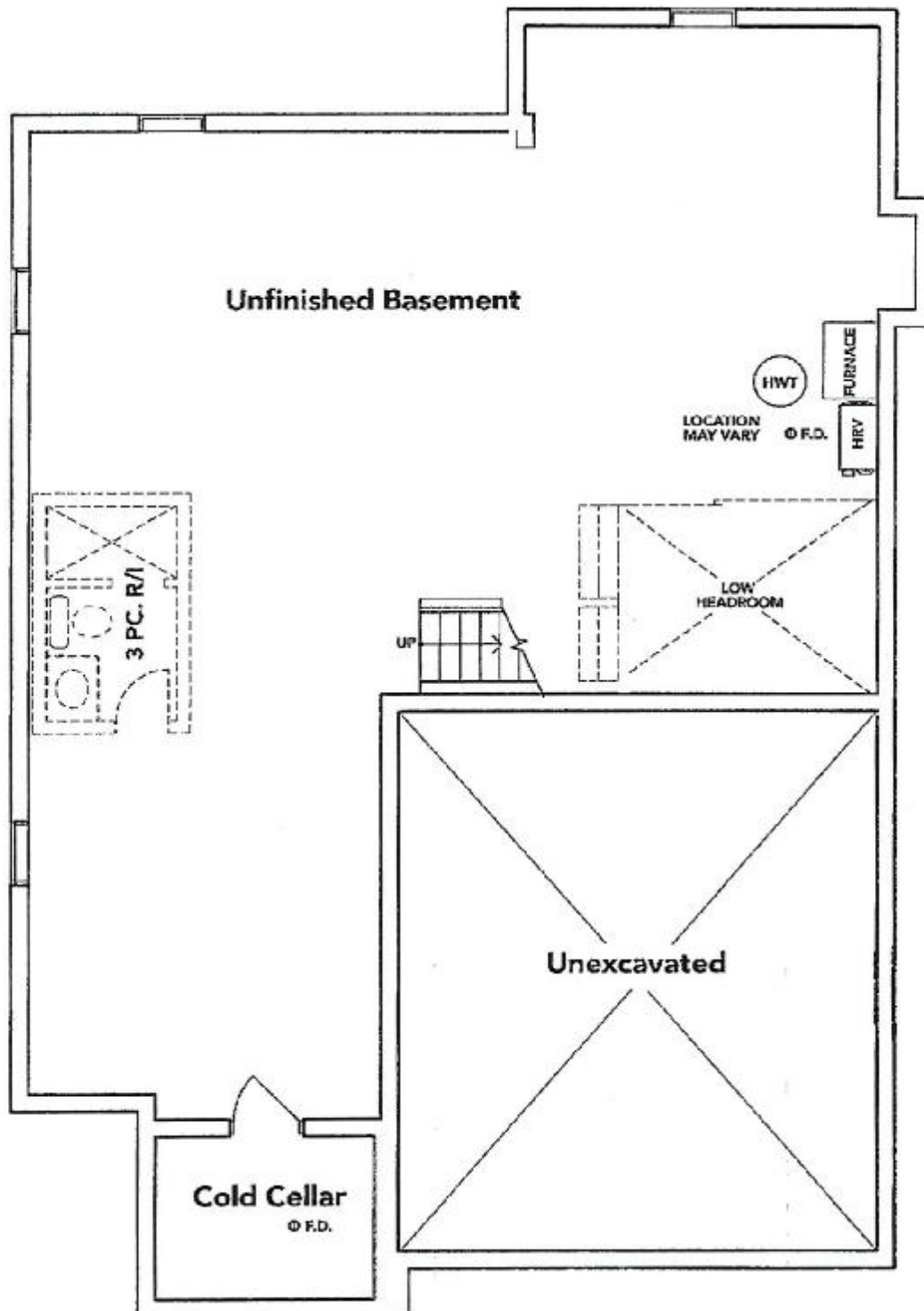
The floor plans and elevations shown are pre-construction plans and may be revised or improved as necessitated by architectural controls and the construction process. The measurements adhere to the rules and regulations of the TARION Warranty Corporation's official method for the calculation of floor area. Materials, specifications and floor plans are subject to change without notice. All house renderings are artist's concept only. Actual usable floor space may vary from the stated floor area. All options shown are upgrades. E. & O. E.

SCHEDULE "B-1" - Page 2 of 3

SCHEDULE "B-1"
Floor Plan

Lot 217
Phase 4A
Model: John (4201) Elev B 4 Bed - 2+1 Bath
Standard

SKETCH #3



BASEMENT EL. B

SEE ATTACHED FOR SIGNATURES

The floor plans and elevations shown are pre-construction plans and may be revised or improved as necessitated by architectural controls and the construction process. The measurements adhere to the rules and regulations of the TARION Warranty Corporation's official method for the calculation of floor area. Materials, specifications and floor plans are subject to change without notice. All house renderings are artist's concept only. Actual usable floor space may vary from the stated floor area. All options shown are upgrades. E. & O. E.

SCHEDULE "B-1" - Page 1 of 3



No RII waterline purchased

PRODUCT MODEL NUMBERS

WRF555SDF

Electrical: A 115-volt, 60 Hz, AC-only 15- or 20-amp fused, grounded electrical supply is required. It is recommended that a separate circuit serving only your refrigerator and approved accessories be provided. Use an outlet that cannot be turned off by a switch. Do not use an extension cord.

Water: A cold water supply with water pressure between 35 and 120 psi (241 and 827 kPa) is required to operate the water dispenser and ice maker. If you have questions about your water pressure, call a licensed, qualified plumber.

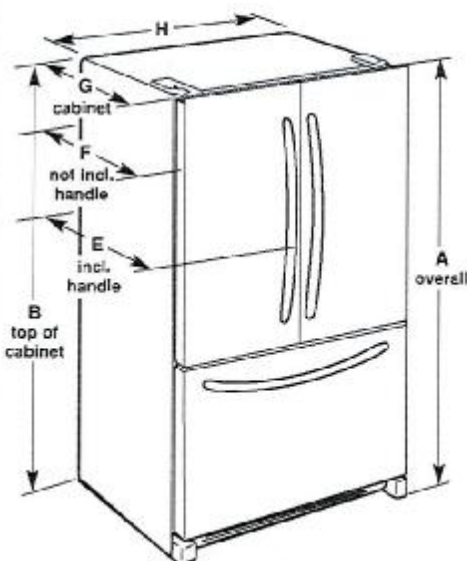
NOTE: If the water pressure is less than what is required, the flow of water from the water dispenser could decrease or ice cubes could be hollow or irregular shaped.

Reverse Osmosis Water Supply:

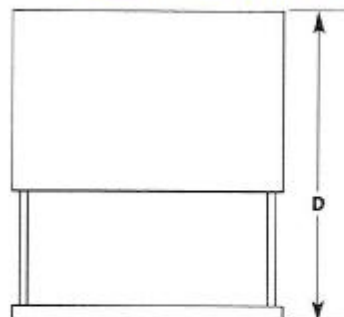
IMPORTANT: The pressure of the water supply coming out of a reverse osmosis system going to the water inlet valve of the refrigerator needs to be between 35 and 120 psi (241 and 827 kPa).

If a reverse osmosis water filtration system is connected to your cold water supply, the water pressure to the reverse osmosis system needs to be a minimum of 40 to 60 psi (276 to 414 kPa).

PRODUCT DIMENSIONS

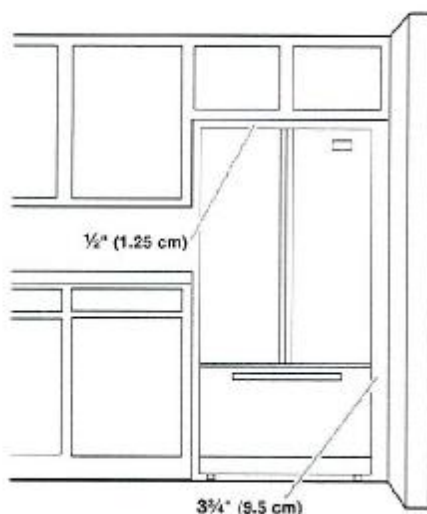


SEE ATTACHED FOR SIGNATURES



Model Size	Height - Overall "A"	Height - Top of Cabinet "B"	Depth - Door Open 90° "C"	Depth - Drawer Open "D"	Depth - With Handles "E"	Depth - Without Handles "F"	Depth - Cabinet Only "G"	Width - Cabinet "H"
24.7 cu. ft.	70 1/4" (178.1 cm)	69 1/4" (174.3 cm)	48" (121.9 cm)	54" (137.2 cm)	35 1/4" (89.5 cm)	32 1/4" (83.5 cm)	29" (73.7 cm)	35 1/4" (89.5 cm)

LOCATION REQUIREMENTS



IMPORTANT: This refrigerator is designed for indoor, household use only.

To ensure proper ventilation for your refrigerator, allow for a 1/2" (1.25 cm) of space on each side and at the top. Allow for a 1" (2.54 cm) space behind the refrigerator. If your refrigerator has an ice maker, allow extra space at the back for the water line connections. When installing your refrigerator next to a fixed wall, leave a 3 3/4" (9.5 cm) minimum space between the refrigerator and wall to allow the door to swing open.

NOTE: This refrigerator is intended for use in a location where the temperature ranges from a minimum of 55°F (13°C) to a maximum of 110°F (43°C). The preferred room temperature range for optimum performance, which reduces electricity usage and provides superior cooling, is between 60°F (15°C) and 90°F (32°C). It is recommended that you do not install the refrigerator near a heat source, such as an oven or radiator.

SEE ATTACHED FOR SIGNATURES

✓ _____ x _____