

Kingsmen (Thames) Inc. / Havelock Corners (Kingsmen)

Lot/Unit: 12 Phase/Building: 4B Model/Floor Plan: Kensington(6001)Elev A OPT GRND 4
BED-4+1 BATH

AUDIO AND SECURITY

Inv.5099	1 - As per Schedule "PE": Vendor to include level 1,2cm granite or quartz in all bathrooms, as per plan, in lieu of the included laminate counter tops. Selections to be made from builders standard samples.	
Line 66875	Note:	
1Sep21 / 1Sep21		

CABINETRY

Inv.5099	1 - As per Schedule "PE": Vendor agrees to switch the pantry for the fridge location as per plan. See sketch. This is at no charge to the purchaser.	
Line 66878	Note:	
1Sep21 / 1Sep21		
Inv.5099	1 - To accomodate the kitchen cabinetry for the 30: chimeny hoodfan...	
Line 66891	Note:	
1Sep21 / 1Sep21		
Inv.5099	1 - See attached for fridge spec's	
Line 66904	Note:	
1Sep21 / 1Sep21		

CABINETRY HOOD FANS

Inv.5099	1 - To supply and install HOOD FAN - PRO COLLECTION (SCB72230) WALL MOUNT RANGE HOOD WITH 650 CFM FAN - 30 INCH - in lieu of the standard hoodfan.. see spec's	
Line 66890	Note:	
1Sep21 / 1Sep21		

CABINETRY VANITY

Inv.5099	1 - To supply an INCREASE VANITY TO KITCHEN HEIGHT - 90CM HIGH - MAINTAINS VANITY DEPTH - CLASSIC SERIES in bedroom #5 Bathroom	
Line 66900	Note:	
1Sep21 / 1Sep21		

ELECTRICAL

Inv.5099	1 - To supply and install the standard T.V Rough-in, in the Great Room and Master Bedroom.. see sketch #1 and #2	
Line 66883	Note:	
1Sep21 / 1Sep21		
Inv.5099	1 - To supply and install the standard Phone (CAT 5) rough-in, in the Great Room, Master Bedroom and Library.. see sketch #1 and #2	
Line 66884	Note:	
1Sep21 / 1Sep21		
Inv.5099	1 - To SUPPLY AND INSTALL AN ADDITIONAL BASIC RECEPTACLE (NOT DEDICATED) centered +- over the F/P Mantle in the Great Room at approx. 66"+- up from the floor.. see sketch #1	
Line 66885	Note: THIS IS FOR A FUTURE WALL MOUNT T.V.	
1Sep21 / 1Sep21		

Kingsmen (Thames) Inc. / Havelock Corners (Kingsmen)

Lot/Unit: 12 Phase/Building: 4B Model/Floor Plan: Kensington(6001)Elev A OPT GRND 4
BED-4+1 BATH

Inv.5099	1 - To SUPPLY AND INSTALL CONDUIT FOR TV OVER THE FIREPLACE next to +- the upg. elec outlet in the Great Room --TERMINATED IN SAME ROOM next to the standard phone and T.V rough-in..see sketch #1	
Line 66886	Note: THIS IS FOR A FUTURE WALL MOUNT T.V.	
1Sep21 / 1Sep21		
Inv.5099	1 - To supply and install one exterior potlight at the front of the house on a separate switch.. see sketch #4	
Line 66887	Note:	
1Sep21 / 1Sep21		
Inv.5099	1 - To SUPPLY AND INSTALL REINFORCING FOR A CEILING to the standard light in the Foyer area.. see sketch #2	
Line 66888	Note:	
1Sep21 / 1Sep21		
Inv.5099	1 - To SUPPLY AND INSTALL REINFORCING FOR A CEILING to the standard light in the open to below area.. see sketch #2	
Line 66889	Note:	
1Sep21 / 1Sep21		

FIREPLACE

Inv.5099	1 - To supply & install a F/P fan to the F/P in the great room...	
Line 66905	Note:	
1Sep21 / 1Sep21		

HARDWOOD

Inv.5099	1 - As per Schedule "PE": Vendor to install engineered hardwood in lieu of tile in front hallway and the hallway leading to the main floor bedroom, as per plan. See sketch	
Line 66876	Note:	
1Sep21 / 1Sep21		

HEATING AND AIR CONDITIONING

Inv.5099	1 - As per Schedule "PE": Vendor to supply and install air conditioning unit sized accordingly from vendors standard samples.	
Line 66874	Note:	
1Sep21 / 1Sep21		

HVAC

Inv.5099	1 - As per Schedule "PE": Vendor to install capped gas line (Rough-in ONLY) at rear of home for future BBQ Location. Location to be finalized at Vendors sole discretion.	
Line 66872	Note:	
1Sep21 / 1Sep21		
Inv.5099	1 - As per Schedule "PE": Vendor to install gas line (Rough-in ONLY) to kitchen in at stove location (As per Plan) to include 110V code requirement.	
Line 66873	Note:	
1Sep21 / 1Sep21		

MISCELLANEOUS

PAINT AND DRYWALL

Kingsmen (Thames) Inc. / Havelock Corners (Kingsmen)

Lot/Unit: 12 Phase/Building: 4B Model/Floor Plan: Kensington(6001)Elev A OPT GRND 4
BED-4+1 BATH

Inv.5099	1 - To increase length of wall by approx. 24" + - in between the back hallway and great room on the main floor level.. see sketch #1	
Line 66882	Note:	
lSep21 / lSep21		
Inv.5099	1 - To supply & install the standard COFFERED CEILING in the dining room area... see sketch # 1	
Line 66901	Note:	
lSep21 / lSep21		
Inv.5099	1 - As per Schedule "PE": Vendor agrees to amend the main floor plan to include a walk in pantry, as per plan. See sketch. This change is at no charge and included in the purchase price.	
Line 66877	Note:	
lSep21 / lSep21		
Inv.5099	1 - To supply and install the option waffle ceiling in the Great Room, as per plan.. see sketch #1	
Line 66879	Note:	
lSep21 / lSep21		

PLUMBING

Inv.5099	1 - To supply and install the mirolin brooke free standing tub in the master ensuite, in lieu of the standard.. see spec's	
Line 66880	Note:	
lSep21 / lSep21		
Inv.5099	1 - To raise toe tester in the bedroom #5 shower to approx. 28" +- up from unfinished floor..	
Line 66881	Note:	
lSep21 / lSep21		
Inv.5099	1 - To supply a WATERLINE ROUGH-IN TO THE FRIDGE LOCATION (NO HOOK UP)	
Line 66895	Note:	
lSep21 / lSep21		
Inv.5099	1 - To supply a WATERLINE ROUGH-IN TO THE DRYER LOCATION (NO HOOK UP)	
Line 66896	Note:	
lSep21 / lSep21		
Inv.5099	1 - To supply and install LAVATORY SINK - SPECIALTY - CONTRAC CALVIN UNDERMOUNT - MODEL 4220CFY in Bedroom #5 Bathroom ONLY in lieu of the standard sink.. see spec's	
Line 66898	Note:	
lSep21 / lSep21		
Inv.5099	1 - To MOEN soap dispencer model: 3942 in Chrome in the kitchen... see spec's ... see sketch #1	
Line 66903	Note:	
lSep21 / lSep21		



CONSTRUCTION SUMMARY

Kingsmen (Thames) Inc. / Havelock Corners (Kingsmen)

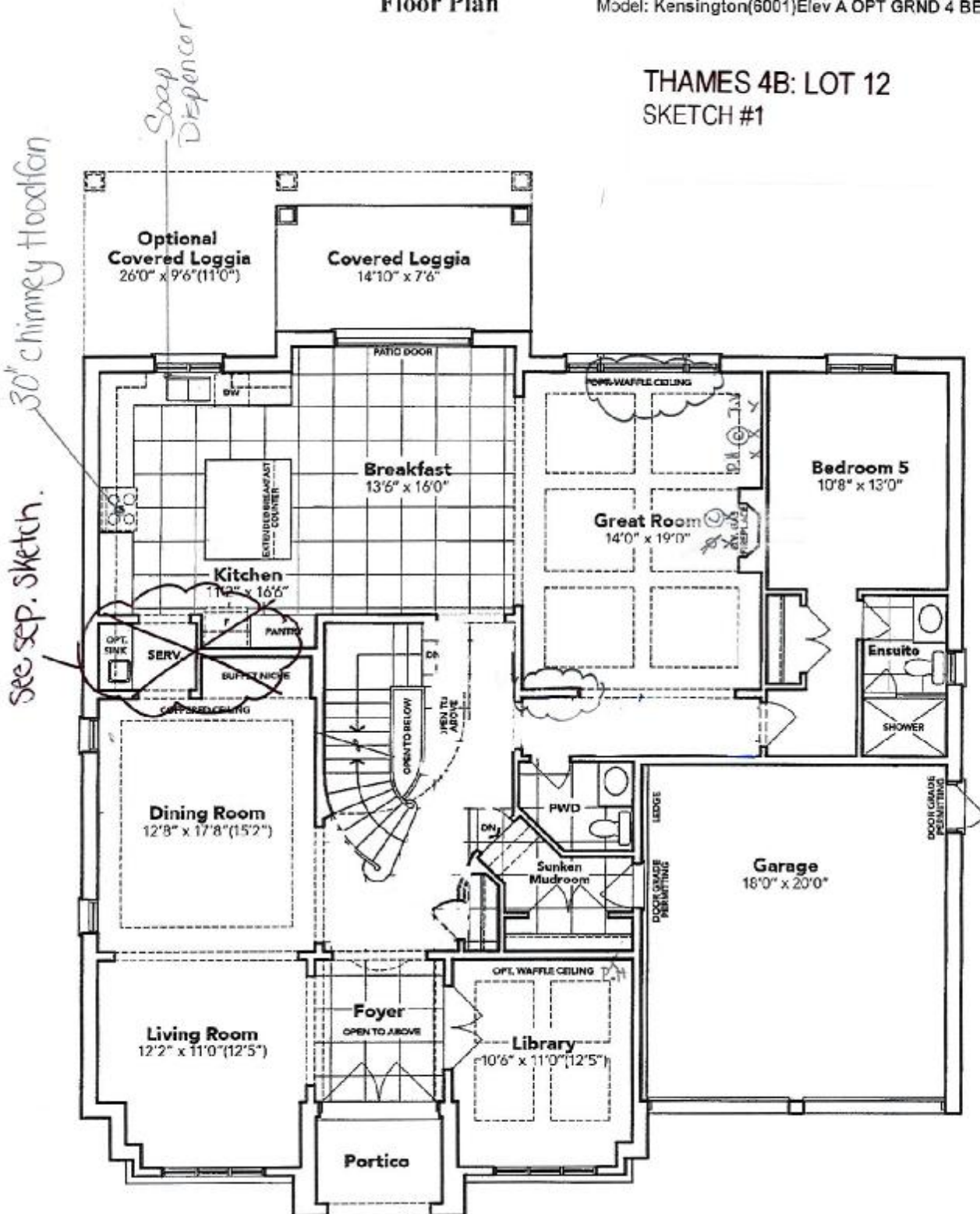
Lot/Unit: 12 Phase/Building: 4B Model/Floor Plan: Kensington(6001)Elev A OPT GRND 4
BED-4+1 BATH
EXTRAS AS PER OFFER

5 FREE APPLIANCES – STAINLESS STEEL FRONT - FRIDGE: STOVE AND DISHWASHER. WHITE WASHER AND DRYER (SUPPLIED ONLY, NOT INSTALLED, FROM BUILDERS STANDARD LINE). A BAD BOY APPLIANCES VOUCHER WILL BE GIVEN BY OUR DECOR CONSULTANT AT THE TIME OF BOOKING YOUR C <i>Worksheet</i> Note:	
VENDOR TO INSTALL CAPPED GAS LINE (ROUGH-IN ONLY) AT REAR OF HOME FOR FUTURE BBQ LOCATION. LOCATION TO BE FINALIZED AT VENDORS SOLE DISCRETION. <i>Worksheet</i> Note:	
VENDOR TO INSTALL GAS LINE (ROUGH-IN ONLY) TO KITCHEN IN AT STOVE LOCATION (AS PER PLAN) TO INCLUDE 110V CODE REQUIREMENT. <i>Worksheet</i> Note:	
VENDOR TO SUPPLY & INSTALL AIR CONDITIONING UNIT, SIZED ACCORDINGLY, FROM VENDORS STANDARD SAMPLES. <i>Worksheet</i> Note:	
VENDOR TO INCLUDE LEVEL 1, 2CM GRANITE OR QUARTZ IN ALL BATHROOMS, AS PER PLAN, IN LIEU OF THE INCLUDED LAMINATE COUNTER TOPS. SELECTIONS TO BE MADE FROM BUILDERS STANDARD SAMPLES. <i>Worksheet</i> Note:	
Vendor to install engineered hardwood in lieu of tile in front hallway and the hallway leading to the main floor bedroom, as per plan. See Sketch <i>Worksheet</i> Note:	
Vendor agrees to amend the main floor plan to include a walk in pantry, as per plan. See Sketch. This modification is at no charge and included in the purchase price. <i>Worksheet</i> Note:	
Vendor agrees to switch the Pantry for the fridge location as per plan. See sketch This is at no charge to the purchaser. <i>Worksheet</i> Note:	

SCHEDULE "B-1"
Floor Plan

Lot 12
Phase 4B
Model: Kensington(6001)Elev A OPT GRND 4 BED-4+1 BATH

THAMES 4B: LOT 12
SKETCH #1



+ Mary A. Siddons *x [Signature]*
OPT. 5 BEDROOM GROUND FLOOR EL. A

The floor plans and elevations shown are pre-construction plans and may be revised or improved as necessitated by architectural controls and the construction process. The measurements adhere to the rules and regulations of the TARION Warranty Corporation's official method for the calculation of floor area. Materials, specifications and floor plans are subject to change without notice. All house renderings are artist's concept only. Actual usable floor space may vary from the stated floor area. All options shown are upgrades. E. & O. E.

SCHEDULE "B-1" - Page 1 of 3

SKETCH

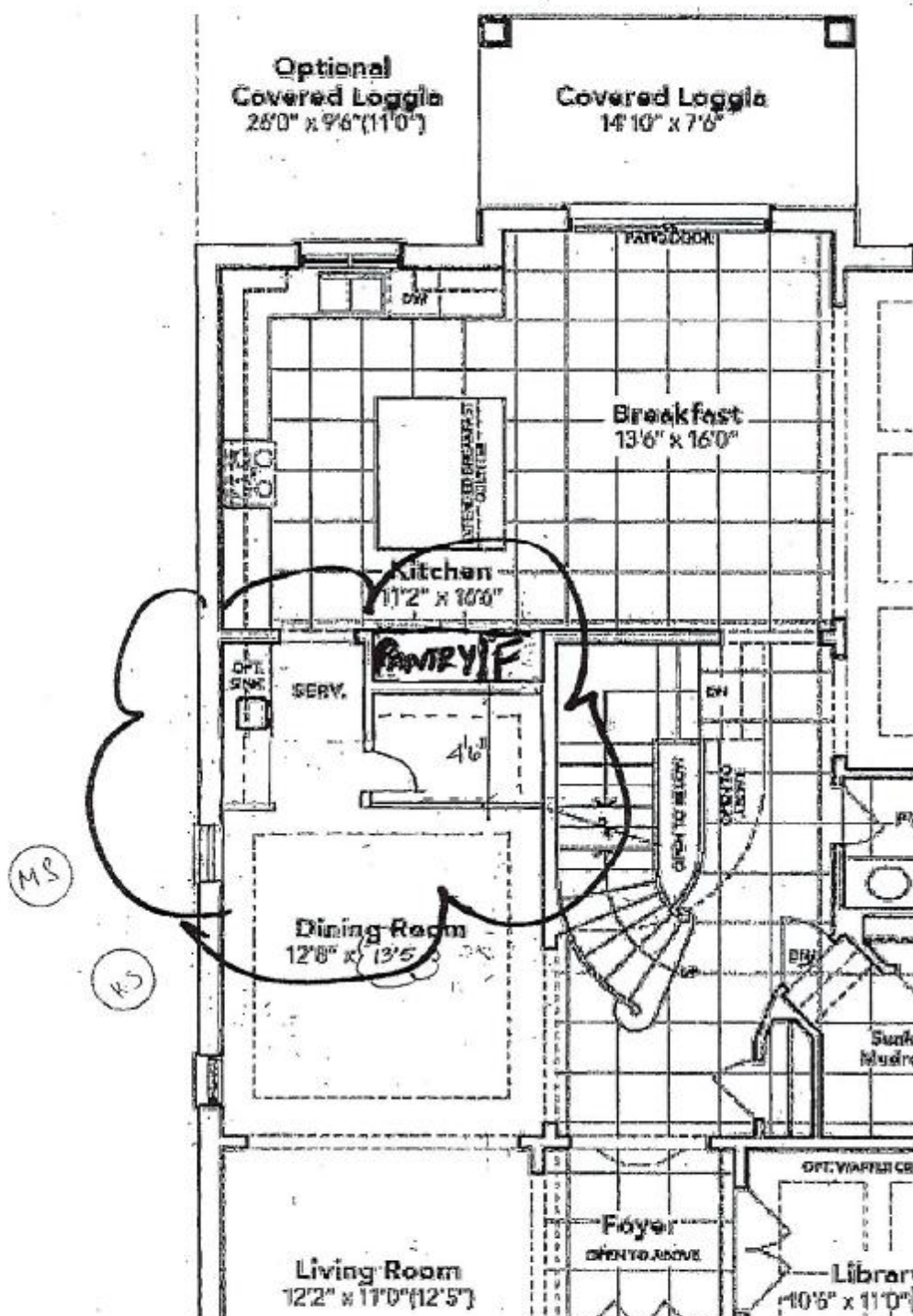
LOT 12

Phase 4B

Sketch 1A

MS

KS



Modified Serverry to include
walk in Pantry

Marjorie Salk

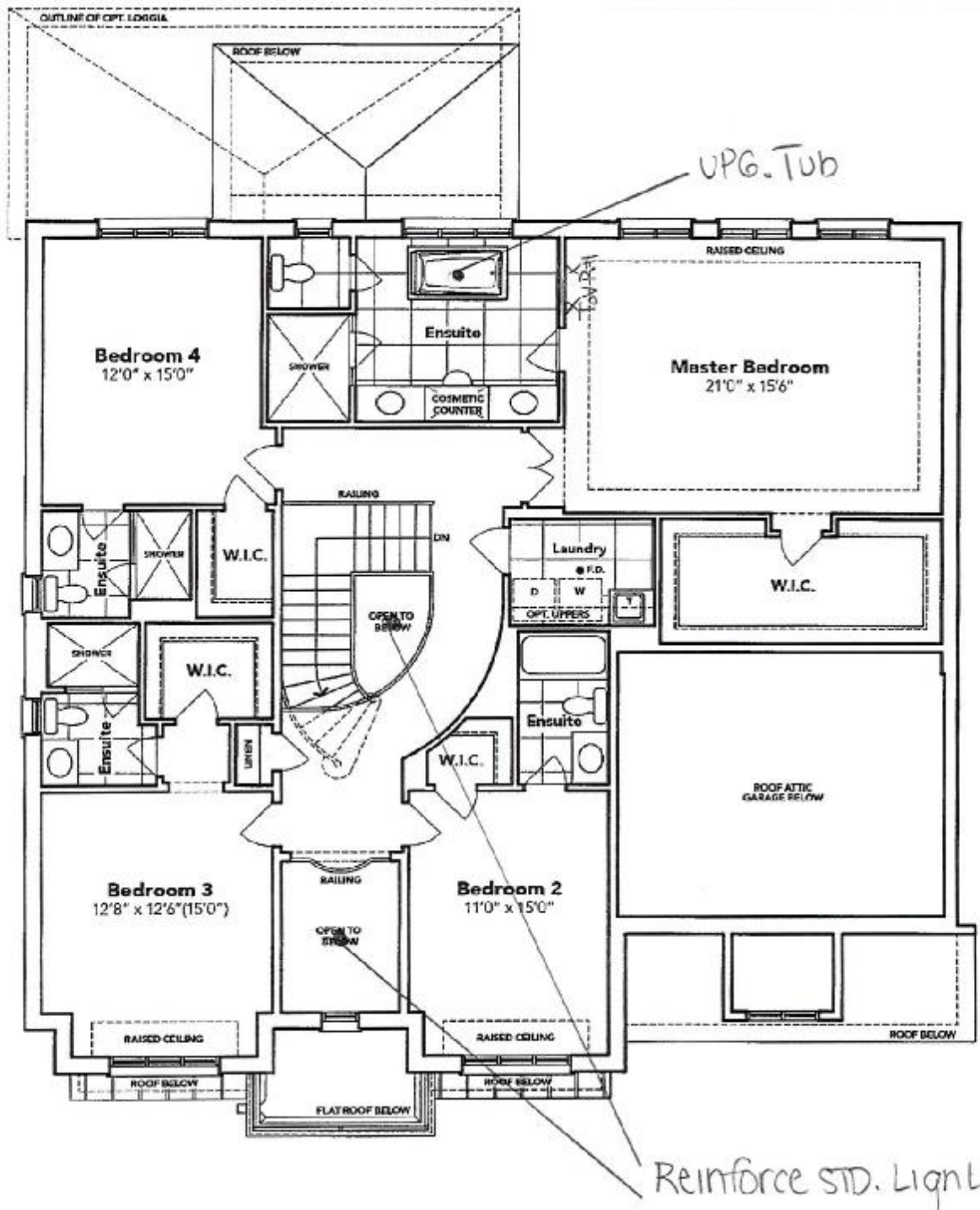
x

Paul

SCHEDULE "B-1"
Floor Plan

Lot 12
Phase 4B
Model: Kensington(6001)Elev A OPT GRND 4 BED-4+1 BATH

THAMES 4B: LOT 12
SKETCH #2



SECOND FLOOR EL. A

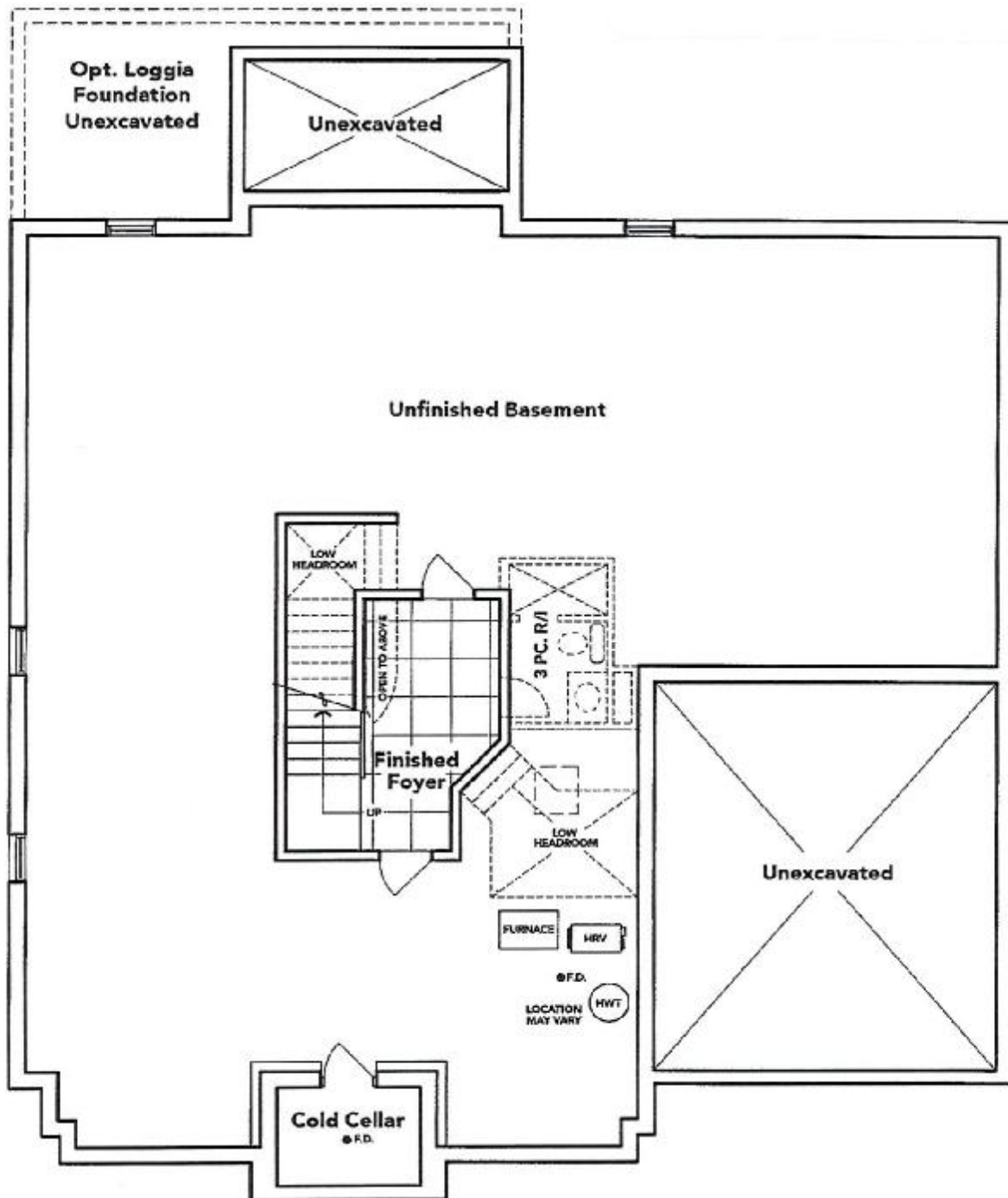
The floor plans and elevations shown are pre-construction plans and may be revised or improved as necessitated by architectural controls and the construction process. The measurements adhere to the rules and regulations of the TARIION Warranty Corporation's official method for the calculation of floor area. Materials, specifications and floor plans are subject to change without notice. All house renderings are artist's concept only. Actual usable floor space may vary from the stated floor area. All options shown are upgrades. E. & O. E.

SCHEDULE "B-1" - Page 2 of 3

SCHEDULE "B-1"
Floor Plan

Lot 12
Phase 4B
Model: Kensington(6001)Elev A OPT GRND 4 BED-4+1 BATH

THAMES 4B: LOT 12
SKETCH #3



OPT. BASEMENT EL. A

Manjit Singh

The floor plans and elevations shown are pre-construction plans and may be revised or improved as necessitated by architectural controls and the construction process. The measurements adhere to the rules and regulations of the TARION Warranty Corporation's official method for the calculation of floor area. Materials, specifications and floor plans are subject to change without notice. All house renderings are artist's concept only. Actual usable floor space may vary from the stated floor area. All options shown are upgrades. E. & O. E.

SCHEDULE "B-1" - Page 3 of 3

THAMES 4B: LOT 12
SKETCH #4

exterior pot light.



+ Mary [Signature] + [Signature]

THAMES 4B: LOT 12
RE: UPG. KITCHEN SOAP DISPENSER



Transitional Soap or Lotion Dispenser

Model 3942

Chrome

+ Mary of Sion x Q ✓

THAMES 4B: LOT 12
RE:UPG SINK
**BEDROOM #5 ONLY

CALVIN

19 1/4" OVAL UNDERMOUNT SINK

□ 4220CFY

Undermount Sink

PRODUCT SPECS:

- Vitreous china
- Front overflow hole
- Template and mounting hardware supplied

DIMENSIONS:

Outer:

490mm W x 410mm D x 195mm H

19 1/4" W x 16 1/8" D x 7 3/8" H

Inner:

430mm W x 350mm D x 145mm H

17" W x 13 3/4" D x 5 3/4" H

COMPLIANCE CERTIFICATIONS

Meets or exceeds the following:

- IAPMO cUPC
- ASME A112.19.2 / CSA B45.1

SHIPPING

Cube 1.53

GW 19 lbs



TO BE SPECIFIED

Colour:

■ Soft White

NOTES: Dimensions of fixtures are nominal and may vary within the range of tolerances established by ASME standard A112.19.2. These measurements are subject to change or cancellation. No responsibility is assumed for use of superseded or voided pages.

+ Mary H. S. K.

x

Q

Specifications

Air Flow Volume: 650 CFM
Electrical Connection: 120V/60Hz
Power Consumption: 240 Watts
Current: 2.0 Amps
Fan Speed: 1599 RPM
Finishes: Stainless Steel
Duct: 6" Round
Knock-out: 6" Round - Top Only
Dimensions: Width: 30"/36"
Height: 44 1/2"
Depth: 19 3/4"
Noise Level: Min. 2 Sones
Max. 7 Sones



SCB722 - Baffle Filter



Ordering Model Chart

Model	Colour	Knock-out	Duct	Size	Filter	CFM
SCB72230	Stainless Steel	6"	6" Round	30"	Baffle	650
SCB72236	Stainless Steel	6"	6" Round	36"	Baffle	650

Notes

+ Mary J. [Signature] + [Signature]



Free Standing Tub



Mirolin Brooke CF2002
68x36x23

- Acrylic Bath
- 2PC Construction
- End Drain Application
- F2 Drain Assembly



Margit Ball

L

Qn

PRODUCT MODEL NUMBERS

WRF532SMB WRF540CWB
WRF535SMB WRF535SWH
WRF535SWB WRF535SWH
WRF532SMH

Electrical: A 115 Volt, 60 Hz, AC only 15 or 20 A fused, grounded electrical supply is required. It is recommended that a separate circuit serving only your refrigerator be provided. Use an outlet that cannot be turned off by a switch. Do not use an extension cord.

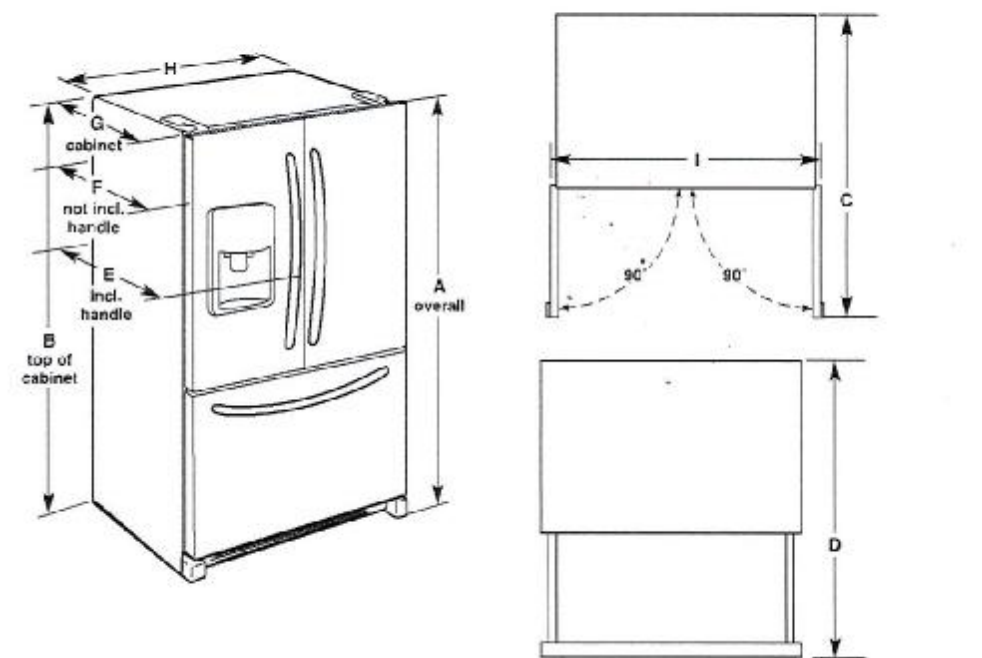
NOTE: Before performing any type of installation, cleaning, or removing a light bulb, turn the control (Thermostat, Refrigerator or Freezer Control depending on the model) to OFF and then disconnect the refrigerator from the electrical source. When you are finished, reconnect the refrigerator to the electrical source and reset the control (Thermostat, Refrigerator or Freezer Control depending on the model) to the desired setting. See "Using the Controls."

Water: A cold water supply with water pressure between 35 and 120 psi (241 and 827 kPa) is required to operate the water dispenser and ice maker. If you have questions about your water pressure, call a licensed, qualified plumber.

IMPORTANT: The pressure of the water coming out of a reverse osmosis system going to the water inlet valve of the refrigerator needs to be between 35 and 120 psi (241 and 827 kPa).

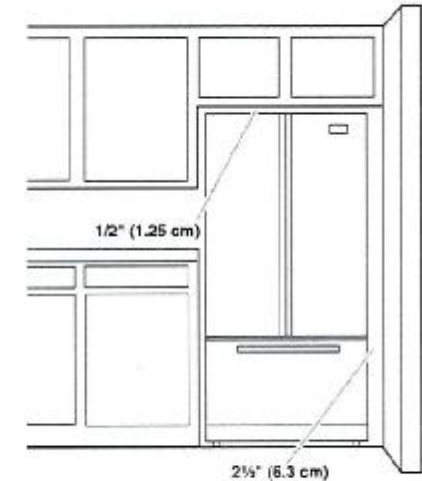
Reverse Osmosis Water Supply:
If a reverse osmosis water filtration system is connected to your cold water supply, the water pressure to the reverse osmosis system needs to be a minimum of 40 to 60 psi (276 to 414 kPa).

PRODUCT DIMENSIONS



Model Number/Size	Height - Overall "A"	Height - Top of Cabinet "B"	Depth - Doors Open 90° "C"	Depth - Drawer Open "D"	Depth - With Handles "E"	Depth - Without Handles "F"	Depth - Cabinet Only "G"	Width - Cabinet "H"	Width - Door Open 90° "I"
WRF535SMB 25.2 cu. ft.	70 1/2" (178.1 cm)	68 1/2" (174.3 cm)	48 1/2" (122.1 cm)	53 1/4" (135 cm)	35 1/2" (90 cm)	32 1/2" (83.7 cm)	29 1/2" (74 cm)	35 1/2" (90.5 cm)	43 1/2" (110.2 cm)
WRF535SWB 25.2 cu. ft.	70 1/2" (178.1 cm)	68 1/2" (174.3 cm)	48 1/2" (122.1 cm)	53 1/4" (135 cm)	35 1/2" (90 cm)	32 1/2" (83.7 cm)	29 1/2" (74 cm)	35 1/2" (90.5 cm)	43 1/2" (110.2 cm)
WRF535SWH 22.1 cu. ft.	70 1/2" (178.1 cm)	68 1/2" (174.3 cm)	42 1/2" (107.6 cm)	52 1/4" (132.4 cm)	34 1/2" (87.5 cm)	31 1/2" (81.1 cm)	28 1/2" (71.4 cm)	32 1/2" (82.9 cm)	40 1/2" (102.6 cm)
WRF540CWB 20 cu. ft.	70 1/2" (178.1 cm)	68 1/2" (174.3 cm)	43 1/2" (109.4 cm)	44 1/4" (113.0 cm)	29 1/2" (74.6 cm)	28" (71.1 cm)	24 1/2" (61.3 cm)	35 1/2" (90.5 cm)	43 1/2" (110.2 cm)
WRF535SWH 20 cu. ft.	70 1/2" (178.1 cm)	68 1/2" (174.3 cm)	43 1/2" (109.4 cm)	52 1/4" (132.4 cm)	35 1/2" (90.2 cm)	33" (83.8 cm)	29 1/2" (74 cm)	35 1/2" (90.5 cm)	41" (104.1 cm)
WRF535SWH 25.2 cu. ft.	70 1/2" (178.1 cm)	68 1/2" (174.3 cm)	48 1/2" (122.2 cm)	53 1/4" (135 cm)	35 1/2" (90.2 cm)	33" (83.8 cm)	29 1/2" (74 cm)	35 1/2" (90.5 cm)	43" (109.2 cm)
WRF532SMH 22.1 cu. ft.	70 1/2" (178.1 cm)	68 1/2" (174.3 cm)	47 1/2" (119.7 cm)	52 1/4" (132.4 cm)	34 1/2" (87.6 cm)	32" (81.3 cm)	28 1/2" (71.4 cm)	32 1/2" (82.9 cm)	40" (101.6 cm)

LOCATION REQUIREMENTS



To ensure proper ventilation for your refrigerator, allow for a 1/2" (1.25 cm) space on each side and at the top. Allow for 1" (2.54 cm) of space behind the refrigerator. If your refrigerator has an ice maker, make sure you leave some extra space at the back for the water line connections. If you are installing your refrigerator next to a fixed wall, leave 2 1/4" (6.3 cm) minimum on the hinge side (some models require more) to allow for the door to swing open.

NOTE: This refrigerator is intended for use in a location where the temperature ranges from a minimum of 55°F (13°C) to a maximum of 110°F (43°C). The preferred room temperature range for optimum performance, which reduces electricity usage and provides superior cooling, is between 60°F (15°C) and 90°F (32°C). It is recommended that you do not install the refrigerator near a heat source, such as an oven or radiator.

Maryjane x *Q*