



CONSTRUCTION SUMMARY

Lindsay 2017 Developments Inc. / Sugarwood

Lot/Unit: 29 Phase/Building: 1 Model/Floor Plan: Talbot Lake (3703) Elev A 3Bed 2.5Bath

DOORS AND WINDOWS

Inv.5762	1 - To supply and install the optional side door (GRADE PERMITTING).. see sketch #1	
Line 73579	Note:	
25Aug22 / 25Aug22		

MISCELLANEOUS

PLUMBING

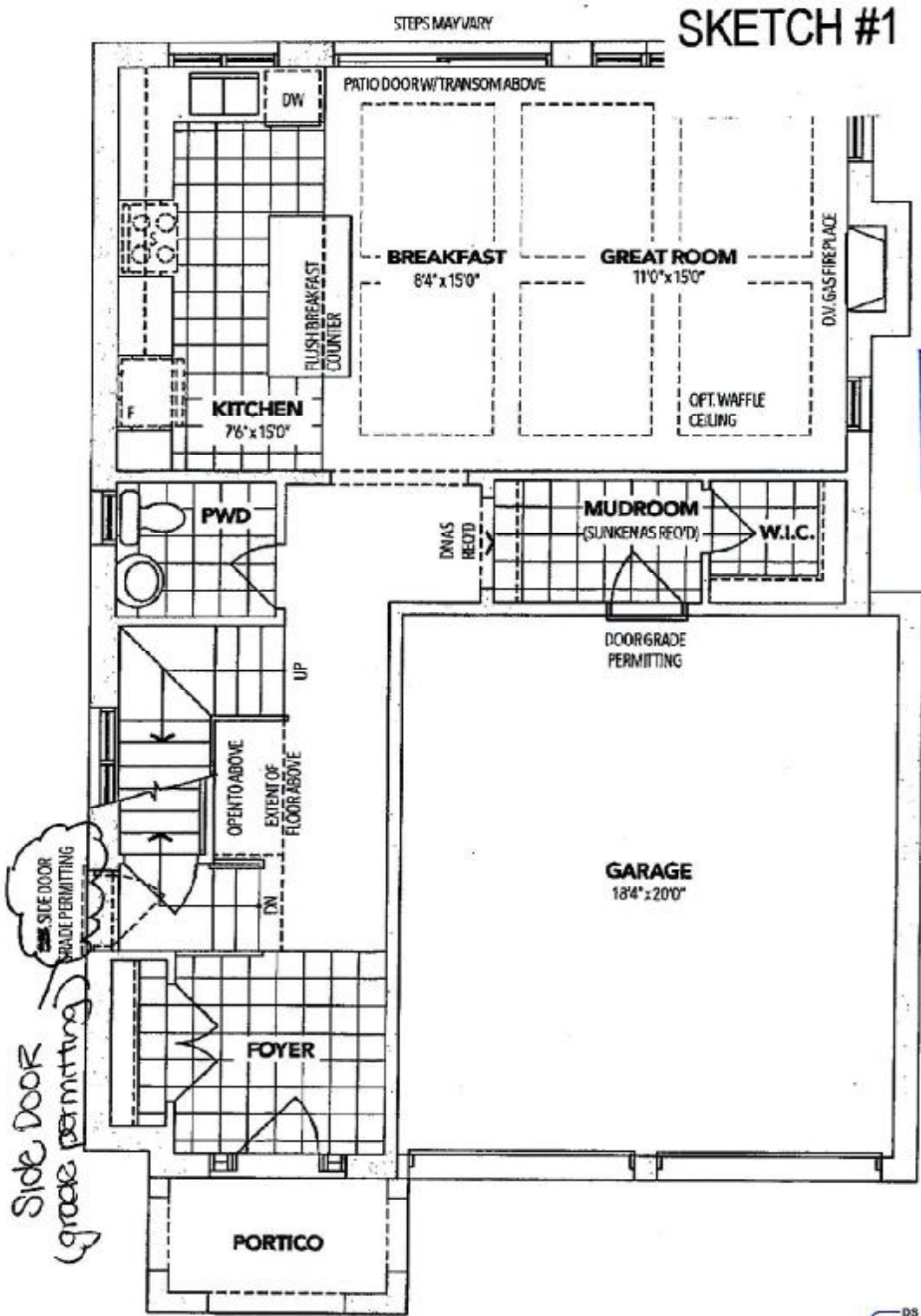
Inv.5762	1 - To supply and install the optional three piece rough-in in the basement.. see sketch #2	
Line 73580	Note:	
25Aug22 / 25Aug22		

EXTRAS AS PER OFFER

Lindsay PH.1 Lot 29

SCHEDULE "B-1"
Floor Plan

Lot 29
Phase 1
Model: Talbot Lake (3703) Elev A 3Bed 2.5Bath
Standard



SKETCH #1

REC'D / RECEIVED
25-08-2022

A MAIN FLOOR

DS
LZ

DS
NE

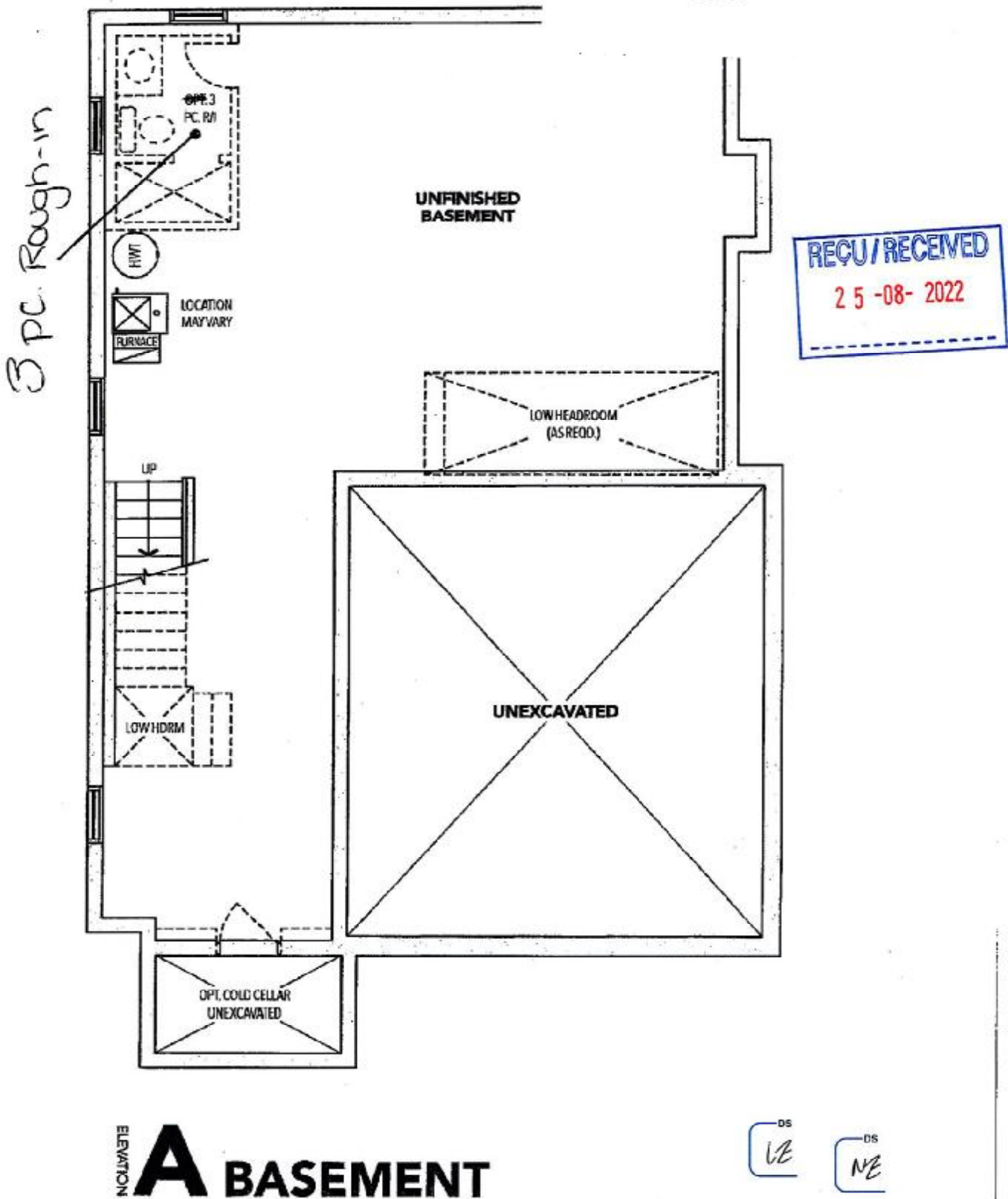
The floor plans and elevations shown are pre-construction plans and may be revised or improved as necessitated by architectural controls and the construction process. The measurements adhere to the rules and regulations of the TARION Warranty Corporation's official method for the calculation of floor area. Materials, specifications and floor plans are subject to change without notice. All house renderings are artist's concept only. Actual usable floor space may vary from the stated floor area. All options shown are upgrades. E. & O. E.

Initials: KS LZ

SCHEDULE "B-1"
Floor Plan

Lot 29
Phase 1
Model: Talbot Lake (3703) Elev A 3Bed 2.5Bath
Standard

SKETCH #2



The floor plans and elevations shown are pre-construction plans and may be revised or improved as necessitated by architectural controls and the construction process. The measurements adhere to the rules and regulations of the TARION Warranty Corporation's official method for the calculation of floor area. Materials, specifications and floor plans are subject to change without notice. All house renderings are artist's concept only. Actual usable floor space may vary from the stated floor area. All options shown are upgrades. E. & O. E.