



CONSTRUCTION SUMMARY

Lindsay 2017 Developments Inc. / Sugarwood

Lot/Unit: 29 Phase/Building: 2 Model/Floor Plan: Cavendish Lake (4210) Elev B 4Bed
4.5Bath

DOORS AND WINDOWS

Inv.6294	1 - TO SUPPLY AND INSTALL THE OPTIONAL SIDE DOOR.. SEE SKETCH #1	
Line 79281	Note:	
12Jun23 / 12Jun23		

PLUMBING

Inv.6294	1 - TO SUPPLY AND INSTALL THE OPTIONAL 3-PC ROUGH-IN.. SEE SKETCH #2	
Line 79282	Note:	
12Jun23 / 12Jun23		

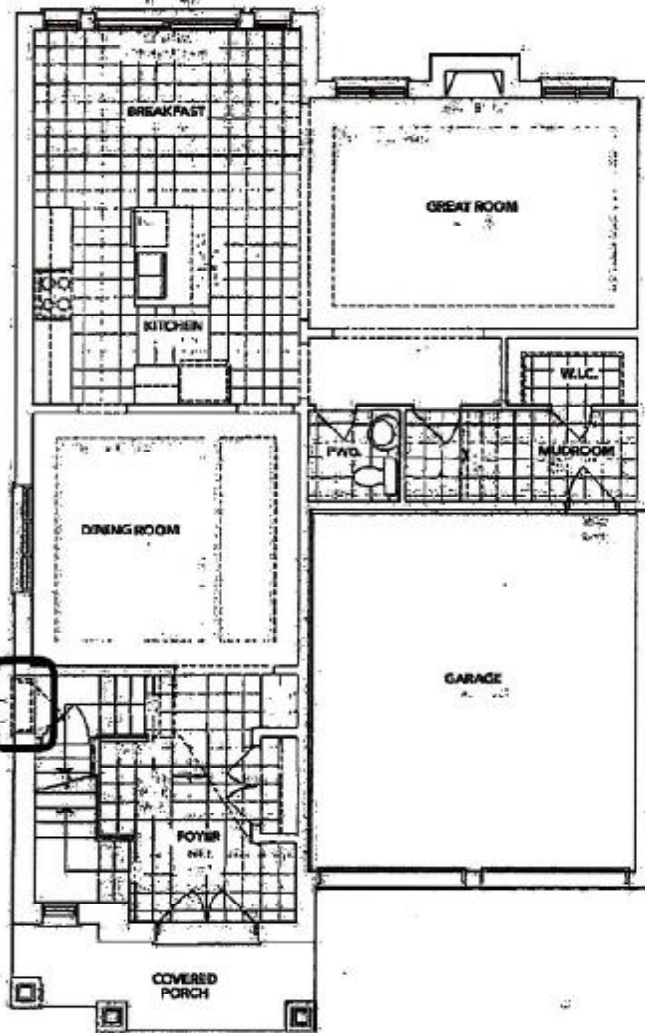
EXTRAS AS PER OFFER

SCHEDULE "B-1"
Floor Plan

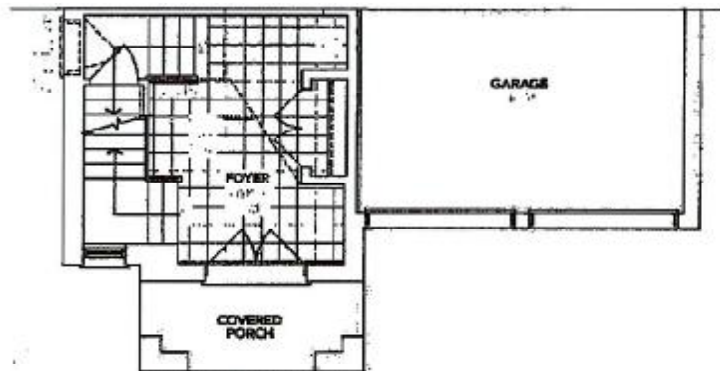
Lot 29
Phase 2
Model: Cavendish Lake (4210) Elev B 4Bed 4.5Bath
Standard

SKETCH #1

OPTIONAL 3-PC ROUGH-IN



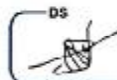
A MAIN FLOOR



B PARTIAL MAIN FLOOR

The floor plans and elevations shown are pre-construction plans and may be revised or improved as necessitated by architectural controls and the construction process. The measurements adhere to the rules and regulations of the TARIION Warranty Corporation's official method for the calculation of floor area. Materials, specifications and floor plans are subject to change without notice. All house renderings are artist's concept only. Actual usable floor space may vary from the stated floor area. All options shown are upgrades. E. & O. E.

SCHEDULE "B-1" - Page 1 of 3



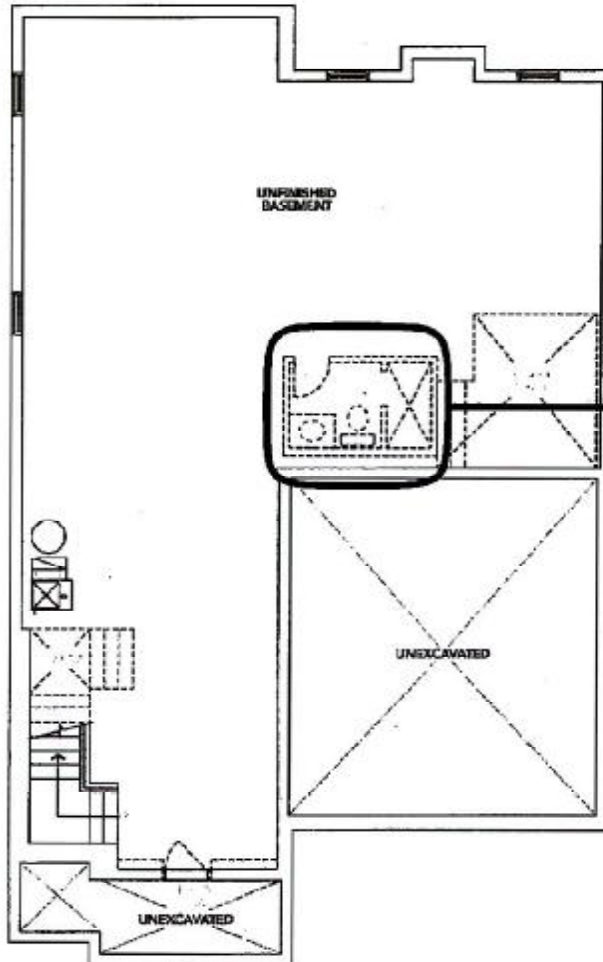
Initials: [Signature]

Lindsay PH. 2 Lot 29

SCHEDULE "B-1"
Floor Plan

Lot 29
Phase 2
Model: Cavendish Lake (4210) Elev B 4Bed 4.5Bath
Standard

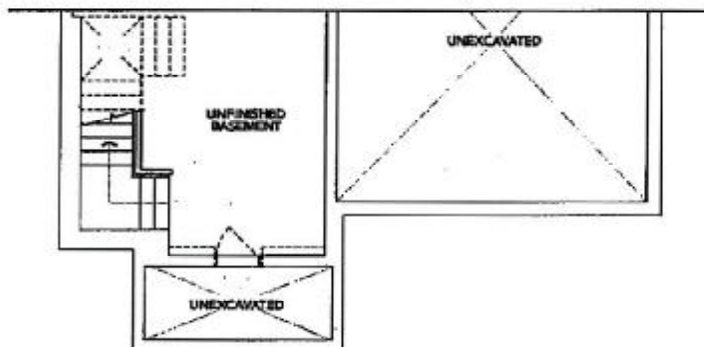
SKETCH #2



OPTIONAL 3-PC ROUGH-IN



A BASEMENT



B BASEMENT

The floor plans and elevations shown are pre-construction plans and may be revised or improved as necessitated by architectural controls and the construction process. The measurements adhere to the rules and regulations of the TARIION Warranty Corporation's official method for the calculation of floor area. Materials, specifications and floor plans are subject to change without notice. All house renderings are artist's concept only. Actual usable floor space may vary from the stated floor area. All options shown are upgrades. E. & O. E.