

Lindsay 2017 Developments Inc. / Sugarwood

Lot/Unit: 61 Phase/Building: 1 Model/Floor Plan: Lovesick Lake (3705) Elev B 4Bed
2.5Bath

CABINETRY

Inv.6601	1 - TO SUPPLY AND INSTALL OPTIONAL LAUNDRY ROOM UPPERS	
Line 82388	Note:	
4Jun25 / 13Jun25		

CABINETRY APPLIANCE - FRIDGE

Inv.6601	1 - 66CM DEEP FRIDGE ENCLOSURE - COUNTER DEPTH WITH NO WALLS - 2 66CM DEEP GABLES AND 1 66CM DEEP CABINET - THIS IS NOT A ZERO CLEARANCE ENCLOSURE. STANDARD HEIGHTS AND WIDTHS WILL BE USED. - CLASSIC SERIES	
Line 82249	Note:	
4Jun25 / 13Jun25		

CABINETRY BASE CABINETS

Inv.6601	1 - POTS & PANS DRAWER - MINIMUM 60 CM - MAXIMUM 90 CM - SIZE SUBJECT TO FLOOR PLAN - CLASSIC SERIES	
Line 82250	Note:	
4Jun25 / 13Jun25		
Inv.6601	1 - 45CM WIDE PULL-OUT DOOR BASE CABINET WASTE - RECYCLE CENTRE WITH SOFT-CLOSE - 2 35L BINS - AVAILABLE ONLY WITH 45CM WIDE CABINET - CLASSIC SERIES	
Line 82251	Note:	
4Jun25 / 13Jun25		
Inv.6601	1 - BASE PIE CUT CORNER - CLASSIC SERIES	
Line 82252	Note:	
4Jun25 / 13Jun25		

CABINETRY HOOD FANS

Inv.6601	1 - HOOD FAN - PRO COLLECTION (PTB5630SS) UNDERMOUNT RANGE HOOD WITH 680 CFM FAN - 30 INCH	
Line 82395	Note:	
4Jun25 / 13Jun25		

CABINETRY VANITY

Inv.6601	2 - INCREASE VANITY TO KITCHEN HEIGHT - 90CM HIGH - MAINTAINS VANITY DEPTH - CLASSIC SERIES IN THE MASTER AND MAIN BATHROOM	
Line 82256	Note:	
4Jun25 / 13Jun25		
Inv.6601	1 - VANITY BANK OF DRAWERS - 60CM TO 90CM WIDE - CLASSIC SERIES IN MASTER ENSUITE	
Line 82257	Note:	
4Jun25 / 13Jun25		

CABINETRY WALL AND HUTCH

Inv.6601	1 - UPPER ANGLE CORNER PER UNIT - CLASSIC SERIES	
Line 82253	Note:	
4Jun25 / 13Jun25		

Lindsay 2017 Developments Inc. / Sugarwood

Lot/Unit: 61 Phase/Building: 1 Model/Floor Plan: Lovesick Lake (3705) Elev B 4Bed
2.5Bath

DOORS AND WINDOWS

Inv.6601	1 - TO SUPPLY AND INSTALL OPTIONAL SIDE DOOR	
Line 82387	Note:	
4Jun25 / 13Jun25		
Inv.6601	3 - To upgrade basement windows (36x24"). See sketch #1	
Line 82234	Note:	
4Jun25 / 13Jun25		

ELECTRICAL

Inv.6601	1 - SUPPLY AND INSTALL AN ADDITIONAL BASIC RECEPTACLE (NOT DEDICATED) at 66" up from the floor, over the F/P Mantle, see sketch #2	
Line 82414	Note:	
4Jun25 / 13Jun25		
Inv.6601	4 - TO SUPPLY & INSTALL FOUR IC 4 in POT LIGHT C/W PAR 20 BULB AND WHTIE TRIM CONNECTED TO A SEP. SWITCH IN THE GREAT ROOM, SEE SKETCH #2	
Line 82389	Note:	
4Jun25 / 13Jun25		
Inv.6601	3 - DO NOT SUPPLY STD LIGHT IN THE LOWER HALLWAY, SUPPLY & INSTALL THREE IC 4 in POT LIGHT C/W PAR 20 BULB AND WHTIE TRIM CONNECTED TO THE STD SWITCH, SEE SKETCH #2	
Line 82390	Note:	
4Jun25 / 13Jun25		
Inv.6601	4 - TO SUPPLY & INSTALL FOUR IC 4 in POT LIGHT C/W PAR 20 BULB AND WHTIE TRIM CONNECTED TO A SEP SWITCH IN THE KITCHEN, SEE SKETCH #2	
Line 82391	Note:	
4Jun25 / 13Jun25		
Inv.6601	1 - TO RELOCATE THE STANDARD LIGHT IN THE KITCHEN, SEE SKETCH #2	
Line 82392	Note:	
4Jun25 / 13Jun25		
Inv.6601	1 - TO SUPPLY A CAPPED ELEC CONNECTED TO A 3-WAY SWITCH IN THE OPEN TO BELOW AREA, SEE SKETCH #2	
Line 82393	Note:	
4Jun25 / 13Jun25		
Inv.6601	1 - SEE SKETCH #2 FOR STD TV & PH LOCATIONS	
Line 82394	Note:	
4Jun25 / 13Jun25		

PLUMBING

Inv.6601	1 - To supply and install the optional 3-piece rough-in, see sketch #1	
Line 82235	Note:	
4Jun25 / 13Jun25		



CONSTRUCTION SUMMARY

Lindsay 2017 Developments Inc. / Sugarwood

Lot/Unit: 61 Phase/Building: 1 Model/Floor Plan: Lovesick Lake (3705) Elev B 4Bed
2.5Bath

EXTRAS AS PER OFFER

Note:	
-------	--

bag pullout

Pots and pans

Ugg, Hoodfan

Ueq. Hoodfan

Base Pie Cut Corner

A SECOND FLOOR

Comfort Height

B PARTIAL BASEMENT

B PARTIAL
SECOND FLOOR

SUGARWOOD

platforms, scaffolds, and floor plans are subjected to design without review. Many of these drawings are approved after actual usable floor space, living area and square footings are taken from stated floor area. Builders are smart crooks. E. B. O'NEILL, JR.

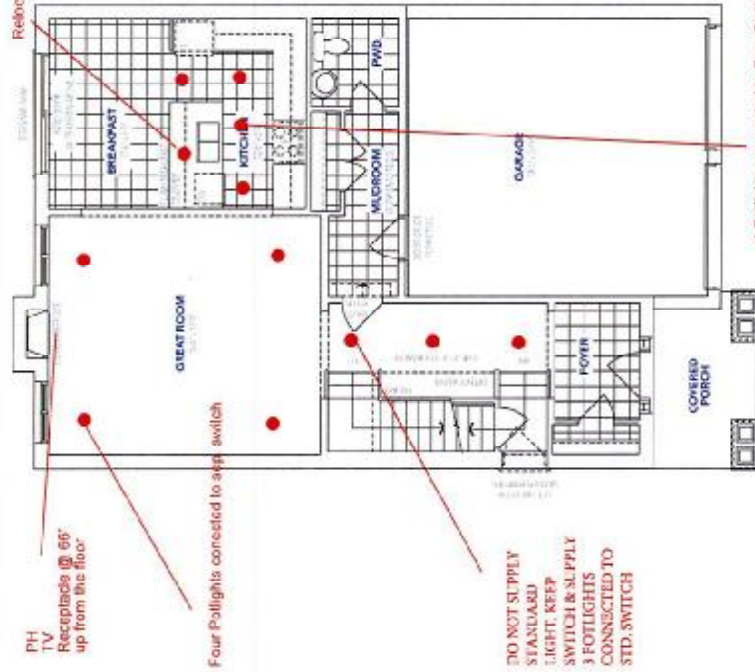
Lovesick Lake

3705

A: 2160 sq. ft. / B: 2190 sq. ft. / 4 Bedrooms / 2 1/2 Bathrooms

KINGSIJEN GROUP INC.

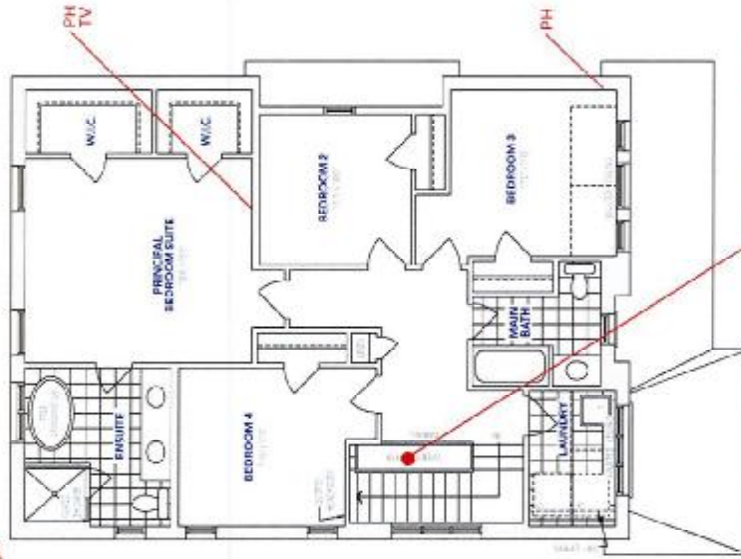
LOT 61-PH1
SKETCH #2



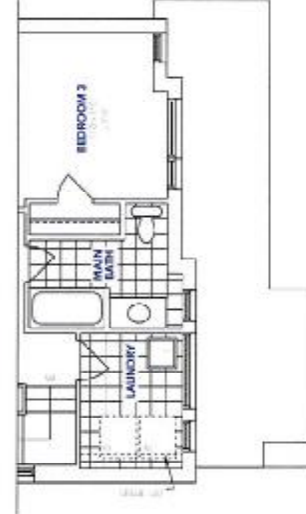
A MAIN FLOOR



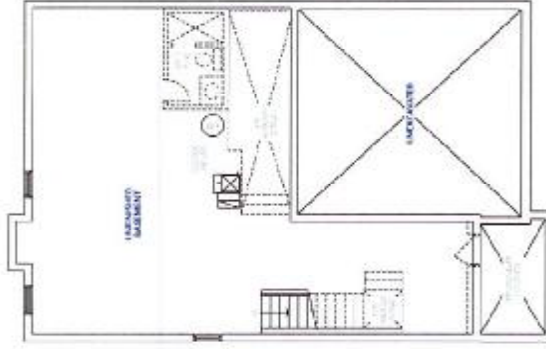
B PARTIAL MAIN FLOOR



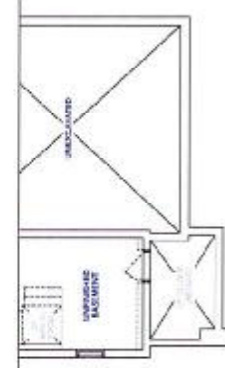
A SECOND FLOOR



B PARTIAL SECOND FLOOR



A BASEMENT



B PARTIAL BASEMENT