

Lindsay 2017 Developments Inc. / Sugarwood

Lot/Unit: 63 Phase/Building: 1 Model/Floor Plan: Gull Lake (4211) Elev A Corner 4Bed
2.5Bath

CABINETRY APPLIANCE - FRIDGE

Inv.6603	1 - 66CM DEEP FRIDGE ENCLOSURE - COUNTER DEPTH WITH - 1 WALL - 1 66CM DEEP GABLE AND 1 66CM DEEP CABINET - THIS IS NOT A ZERO CLEARANCE ENCLOSURE. STANDARD HEIGHTS AND WIDTHS WILL BE USED. - CLASSIC SERIES	
Line 82303	Note:	
9Jun25 / 13Jun25		

CABINETRY BASE CABINETS

Inv.6603	1 - BANK OF DRAWERS CABINET - 55 CM MAXIMUM - SIZE SUBJECT TO FLOOR PLAN - CLASSIC SERIES	
Line 82304	Note:	
9Jun25 / 13Jun25		
Inv.6603	2 - POTS & PANS DRAWER - MINIMUM 60 CM - MAXIMUM 90 CM - SIZE SUBJECT TO FLOOR PLAN - CLASSIC SERIES	
Line 82305	Note:	
9Jun25 / 13Jun25		
Inv.6603	1 - BASE PIE CUT CORNER - CLASSIC SERIES	
Line 82404	Note:	
9Jun25 / 13Jun25		

CABINETRY HOOD FANS

Inv.6603	1 - DECOR HOOD CABINET FOR 30INCHES STOVE WITH 600 CFM FANAVAILABLE ONLY IN OAK - MAPLE - AND PAINT - AVAILABLE ONLY 30INCHES AND 36INCHES - REQUIRES ADDITIONAL LEAD TIME IN CONSTRUCTION SCHEDULE - VIKING SERIES	
Line 82405	Note:	
9Jun25 / 13Jun25		

CABINETRY VANITY

Inv.6603	2 - INCREASE VANITY TO KITCHEN HEIGHT - 90CM HIGH - MAINTAINS VANITY DEPTH - CLASSIC SERIES IN THE MAIN AND MASTER ENSUITE	
Line 82410	Note:	
9Jun25 / 13Jun25		
Inv.6603	2 - VANITY BANK OF DRAWERS - 60CM TO 90CM WIDE - CLASSIC SERIES IN THE MAIN AND MASTER ENSUITE	
Line 82411	Note:	
9Jun25 / 13Jun25		

CABINETRY WALL AND HUTCH

Inv.6603	1 - UPPER ANGLE CORNER PER UNIT - CLASSIC SERIES	
Line 82403	Note:	
9Jun25 / 13Jun25		

DOORS AND WINDOWS



CONSTRUCTION SUMMARY

Lindsay 2017 Developments Inc. / Sugarwood

Lot/Unit: 63 Phase/Building: 1 Model/Floor Plan: Gull Lake (4211) Elev A Corner 4Bed
2.5Bath

Inv.6603	5 - To upgrade basement windows (36x24"), see sketch #1	
Line 82289	Note:	
9Jun25 / 13Jun25		

ELECTRICAL

Inv.6603	1 - SEE SKETCH #2 FOR STD TV & PH LOCATIONS	
Line 82412	Note:	
9Jun25 / 13Jun25		
Inv.6603	1 - SUPPLY AND INSTALL AN ADDITIONAL BASIC RECEPTACLE (NOT DEDICATED) OVER THE F/P MANTLE AT 66" UP FROM THE FLOOR, NEXT TO THE STANDARD TV AND PH ROUGH-IN SEE SKETCH #2	
Line 82413	Note:	
9Jun25 / 13Jun25		
Inv.6603	1 - To relocate the standard light in the kitchen, see sketch #2	
Line 82406	Note:	
9Jun25 / 13Jun25		
Inv.6603	6 - TO SUPPLY & INSTALL IC SIX 4 in POT LIGHT C/W PAR 20 BULB AND WHITIE TRIM CONNECTED TO A SEP SWITCH IN THE DINING/GREAT ROOM, SEE SKETCH #2	
Line 82407	Note:	
9Jun25 / 13Jun25		
Inv.6603	4 - TO SUPPLY & INSTALL FOUR IC 4 in POT LIGHT C/W PAR 20 BULB AND WHITIE TRIM CONNECTED TO A SEPARATE SWITCH IN THE BREAKFAST AREA, SEE SKETCH #2	
Line 82408	Note:	
9Jun25 / 13Jun25		
Inv.6603	3 - TO SUPPLY & INSTALL THREE IC 4 in POT LIGHT C/W PAR 20 BULB AND WHITIE TRIM CONNECTED TO A SEP. SWITCH IN THE KITCHEN, SEE SKETCH #2	
Line 82409	Note:	
9Jun25 / 13Jun25		

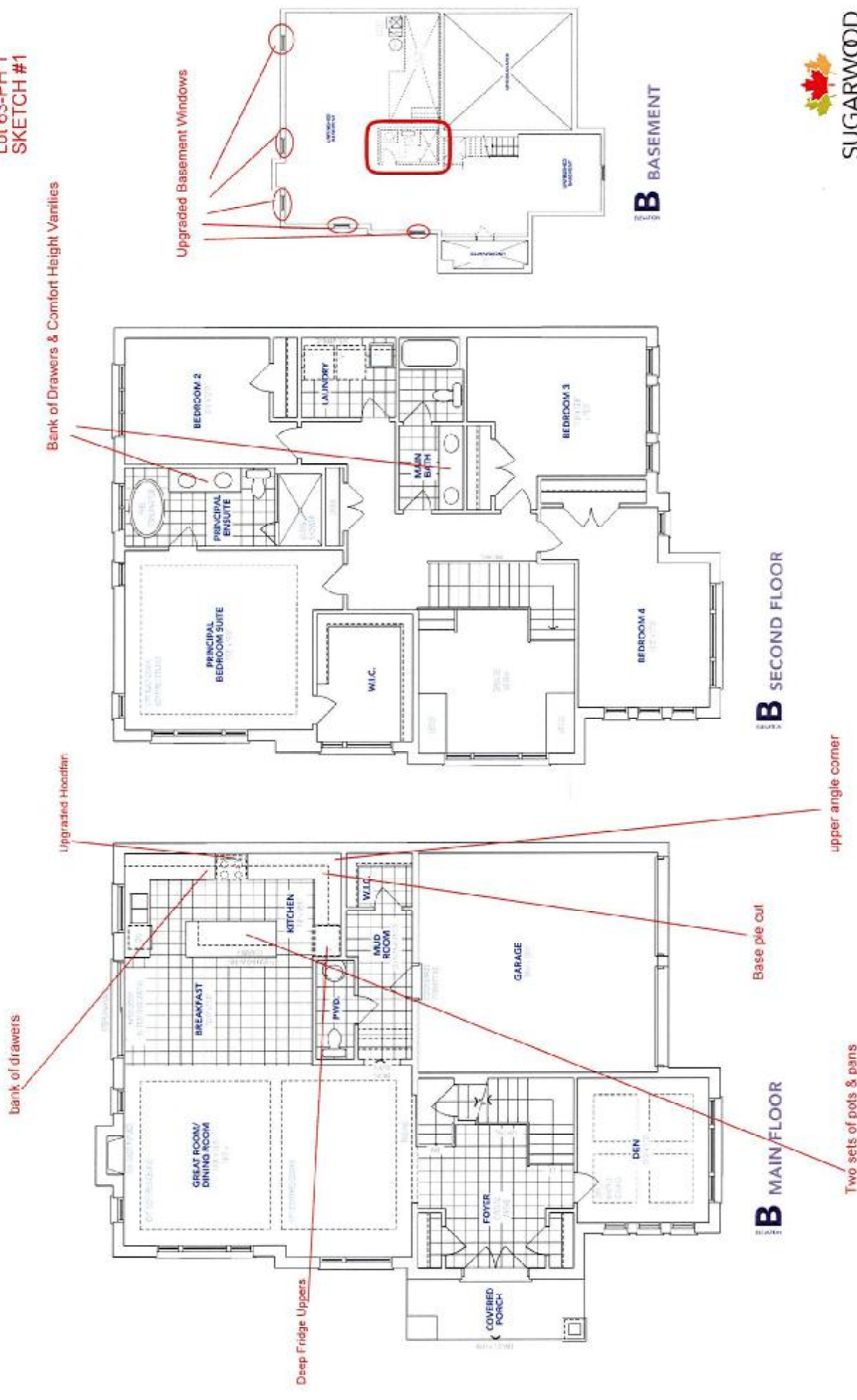
PLUMBING

Inv.6603	1 - TO supply and install optional 3-piece rough-in, see sketch #1	
Line 82290	Note:	
9Jun25 / 13Jun25		

EXTRAS AS PER OFFER

Note:	
-------	--

Lot 63-PH 1
SKETCH #1



Gull Lake B

KINGSIIEN

PH
TV
Rec

PH
TV
Receptacle @56"

“locate std kitchen light

PHN

relocate std kitchen light

3 pollights connected to sld kitchen light switch

五

B MAIN FLOOR

B SECOND FLOOR

B BASEMENT
122-4004



SUGARWOOD

Manuscript received 10 June 2004; revised manuscript received 10 June 2004; accepted manuscript received 10 June 2004. This article is part of the special issue "The Role of the Environment in the Evolution of the Human Brain".