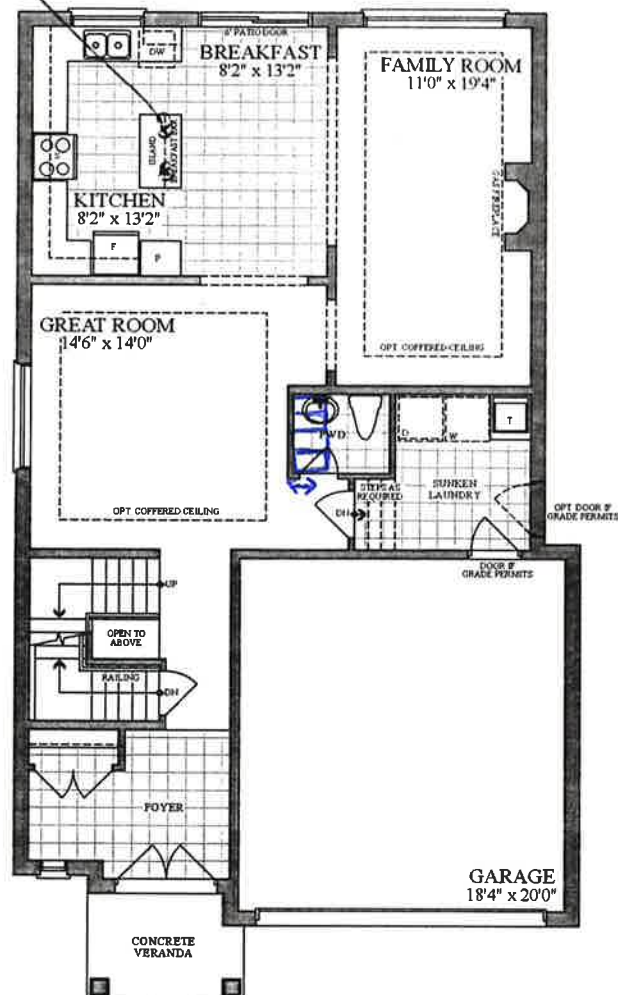


The Manitou / Elev. A & B
2480 sq.ft.

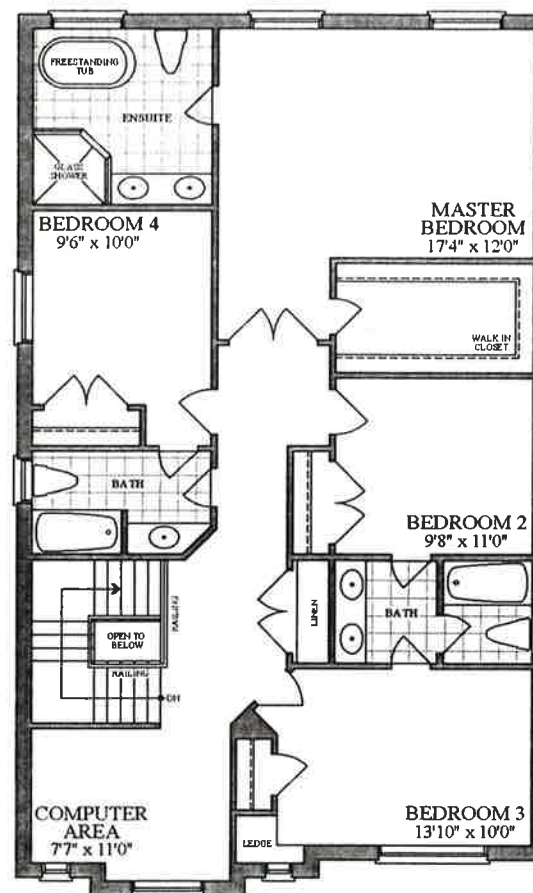
Stove &
Hoodfan
opening to
be
36" inches
wide from
P003,
Dated
Aug.13,
2021

2 capped Lights |
for future Pendants

LOT 2-21, INNISFIL, PE005



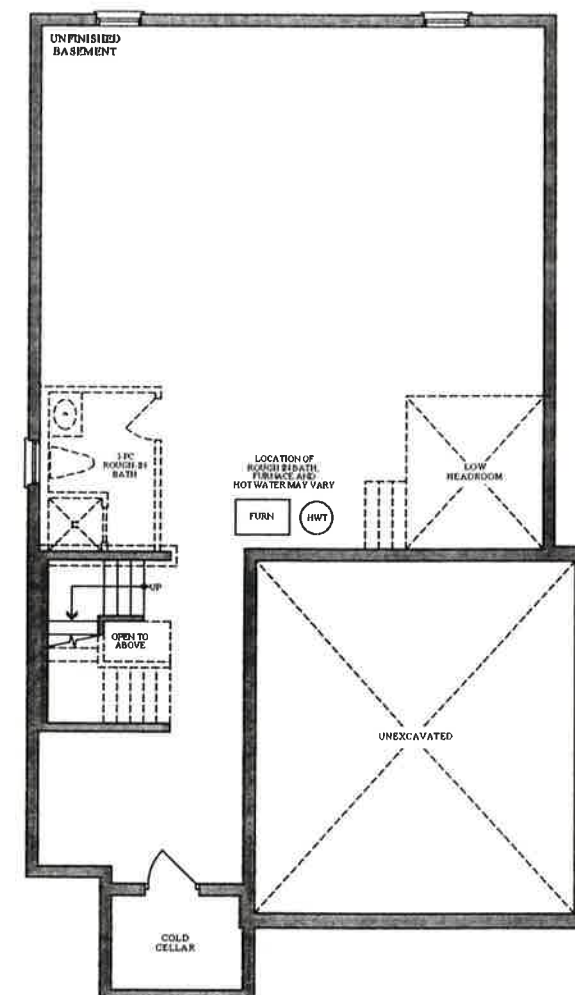
FIRST FLOOR
ELEVATION A & B



SECOND FLOOR
ELEVATION A



SECOND FLOOR
ELEVATION B



**BASEMENT
ELEVATION A & B**



Plans and specifications are subject to change without notice. E. & O. E. Actual usable floor space may vary from the stated floor area. All renderings are artist's concept.